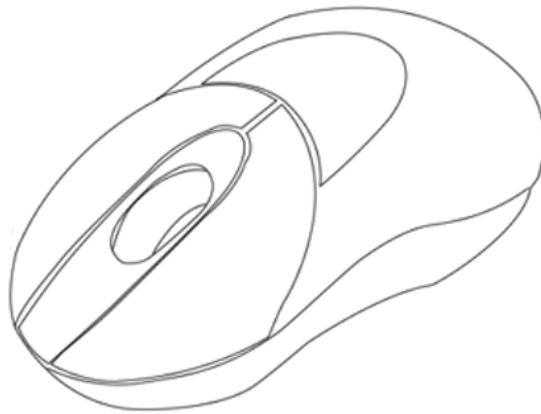


# **Optical Wireless Travel Mouse**



## **User's Manual**

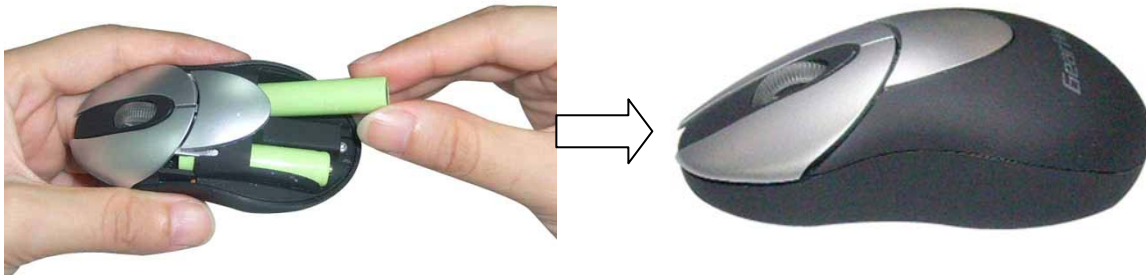
## INSTALLING BATTERIES:

To properly install batteries into your Mouse, please follow the instructions below:

1. Remove the Battery Compartment Cover of your Mouse by pressing the silver release button in the middle of the mouse and slide the Battery Compartment Cover open.



2. Install two AAA Batteries into your Mouse following the battery orientation guide in the battery bay and then replace the Battery Compartment Cover back onto your Mouse until it securely locks.



3. After the AAA Batteries have been installed into your Mouse properly, the sensor LED inside your Mouse will light up.

## ESTABLISHING A CONNECTION:

1. Place the mouse in the effective area.
2. Press and hold the button at the bottom of your mouse for about 2 seconds, the LED indicator will flash rapidly and then turn off.



3. Your wireless optical mouse is now ready to be used.

## CHANGING THE SPEED OF YOUR MOUSE:

To adjust the speed of the cursor or the scroll button features on your computer, please follow the instructions below:

**NOTE:** The screenshots show in this section are for demonstration only and your screen may look slightly different but with similar options.

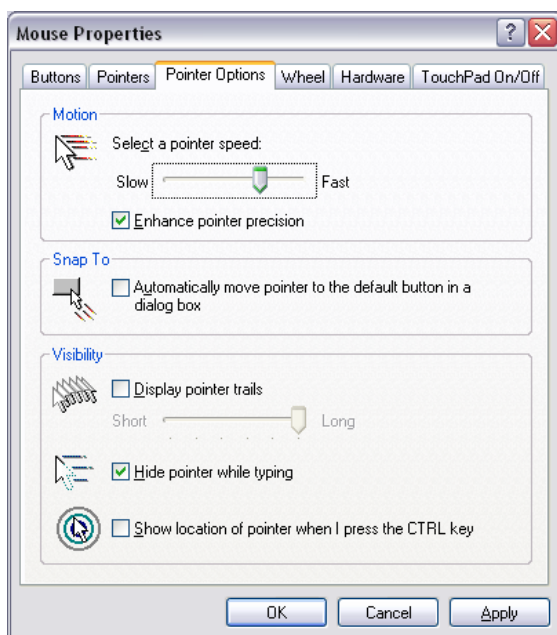
### For Windows®

Open the “**Control Panel**”, and double-click the “**Mouse**” icon to open the mouse properties screen, and then select the “**Pointer Options**”. After you have made your changes; select “**Apply**”, and then “**OK**”.

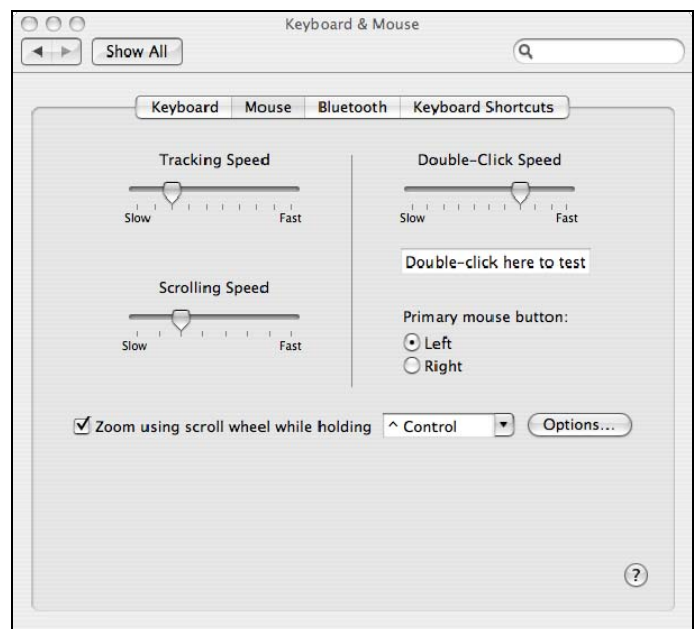
### For Mac®

Open the “**System Preferences**”. At the **System Preferences** screen, click the “**Keyboard & Mouse**” icon to open the **Keyboard & Mouse** screen, and then select the “**Mouse**” tab and make your changes.

**Windows®**



**Mac®**



## FCC WARNING

This device complies with Part 15 of the FCC Rules. Operation is subject to the following two conditions:  
(1) this device may not cause harmful interference, and  
(2) this device must accept any interference received, including interference that may cause undesired operation.

**NOTE 1:** Any changes or modifications not expressly approved by the manufacturer could void the user's authority to operate the equipment.

**NOTE 2:** The manufacturer is not responsible for any radio or TV interference caused by unauthorized modifications to this equipment. Such modifications could void the user's authority to operate the equipment.