

# RC100

## IntelliFire Plus™ Wireless Wall Switch

### Installation & Operating Instructions

Hearth & Home Technologies disclaims any responsibility for, and the warranty will be voided by, the following actions:

- Installation and use of any damaged system component.
- Modification of the system component.
- Installation other than as instructed by Hearth & Home Technologies.
- Installation and/or use of any component part not approved by Hearth & Home Technologies.

**Any such action may cause a fire hazard.**

- Read, understand and follow these instructions for safe installation and operation.

## Introduction

The RC100 wireless wall switch is designed to turn your gas fireplace on and off. The RC100 wireless wall switch is only for use with the Hearth & Home Technologies IntelliFire Plus™ system (IPI).

## FCC Requirements

**WARNING! Risk of Fire!** Changes or modifications to this unit not expressly approved by the party responsible for compliance could void the user's authority to operate the equipment.

**Note:** This equipment has been tested and found to comply with the limits for a Class B digital device, pursuant to Part 15 of the FCC Rules. These limits are designed to provide reasonable protection against harmful interference in a residential installation. This equipment generates, uses, and can radiate radio frequency energy and, if not installed and used in accordance with the instructions, may cause harmful interference to radio communications. However, there is no guarantee that interference will not occur in a particular installation. If this equipment does cause harmful interference to radio or television reception, which can be determined by turning the equipment off and on, the user is encouraged to try to correct the interference by one or more of the following measures:

- Reorient or relocate the receiving antenna.
- Increase the separation between the equipment and receiver.
- Connect the equipment into an outlet on a circuit different from that to which the receiver is connected.
- Contact the dealer or an experienced radio TV technician for help.

## Installation Precautions

This wall switch is tested and safe when installed in accordance with this installation manual. Do not install any components that may be damaged.

Do not modify, disassemble, or substitute any of the components included with this kit. Installation of this unit must be done by a qualified service technician.

Placement of this wall switch may affect performance. An assessment of the space should be done prior to installation for optimum performance.

## Determine Location

Determine the location for the wireless wall switch. The selected location should be in the same space as the gas fireplace with visual sight of fireplace. The wireless wall switch must be placed within 30 feet of the fireplace but should not be exposed to extreme heat.

The RC100 is approved for interior installation and should always be placed under weather resistant cover when used in exterior applications.

## Installation of Wireless Wall Switch

**CAUTION! Risk of Fire! DO NOT** install damaged or modified components. Warranty will be voided if damaged or modified components are installed.

**Kit components:** One wireless wall switch, two #6 screws, two wall anchors, two CR2032 batteries.

1. Remove wall switch components from packaging.
2. Insert small flat screwdriver in the tab located in the bottom of the wall switch and twist the screwdriver to disassemble the wall switch. See Figure 1.

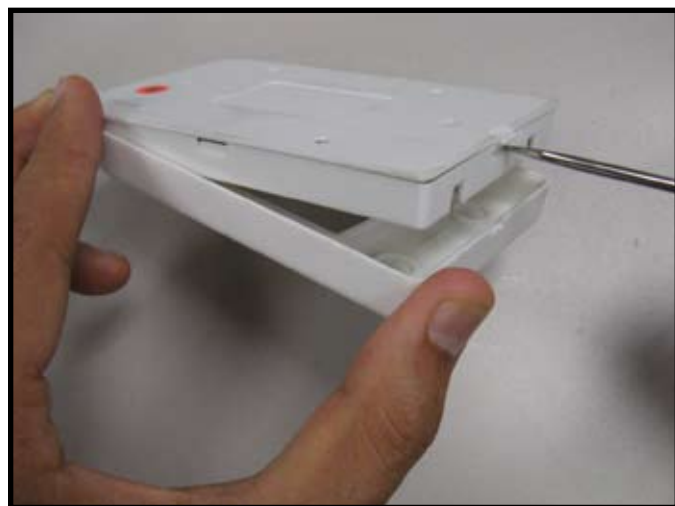


Figure 1. Wall Switch Disassembly

3. Secure the wall switch on a flat wall surface using the two screws and wall anchors provided. See Figure 2. This device will fit into a standard size junction box.

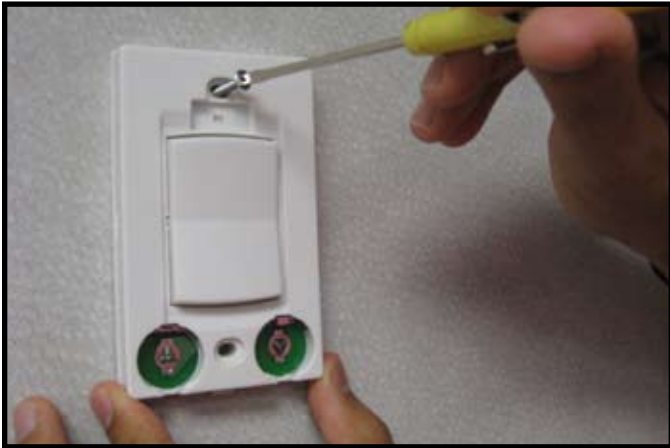


Figure 2. Mounting Wireless Wall Switch

4. Insert the two CR2032 batteries (supplied) into the circular slots with the positive side of batteries facing up. See Figure 2.



Figure 3. Battery Installation

5. Place the cover back on the wall switch and press the top button. The red light illuminates if the batteries were properly installed. See Figure 4.

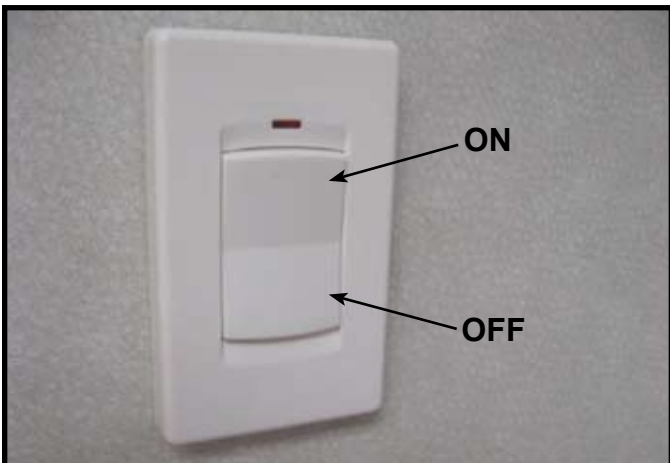


Figure 4. RC100 Function

## Programming the RC100 to the Control Module

**CAUTION! Risk of burns! DO NOT program the wireless wall switch to the control module when fireplace is hot.**

- Verify the ON/OFF/REMOTE switch is in the REMOTE position. Green LED light will blink twice and wall switch will beep twice. See Figure 5.
- Using a small item (such as a paper clip) press and release the learn button located near the ON/OFF/REMOTE switch. See Figure 5.
- Control module will beep once and LED will blink green for 10 seconds.
- While the LED is blinking, press the top button on the RC100 wall switch. A double beep will come out of the control module to indicate that it has been programmed successfully.

**NOTICE:** Up to three remote controls can be programmed into the control module. Simply press a button on the other remote controls during the 10 second programming process to add another remote into the system.

To clear memory in the control module, use a small item (such as a paper clip) to press and release the LEARN button. Control module will beep once and LED will blink green for 10 seconds **DO NOT** press any buttons on the remote during the ten seconds that the green LED blinks. The memory will be cleared.

## Turning On the Fireplace

- Press the top button to turn the fireplace ON. The fireplace will first ignite the pilot. Once the pilot flame is established the main burner will be lit.

## Adjusting Flame Height

The flame height can be adjusted by sliding the HI/LOW switch to the desired setting. See Figure 5. If the HI/LOW switch is in the LOW position the burner flame will adjust to LOW ten seconds after ignition.

**CAUTION! Risk of burns! Only adjust flame height when fireplace is cool.**

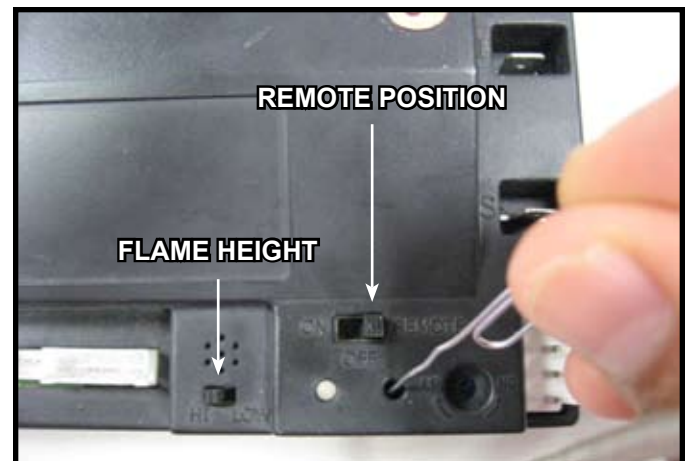


Figure 5. Programming RC100

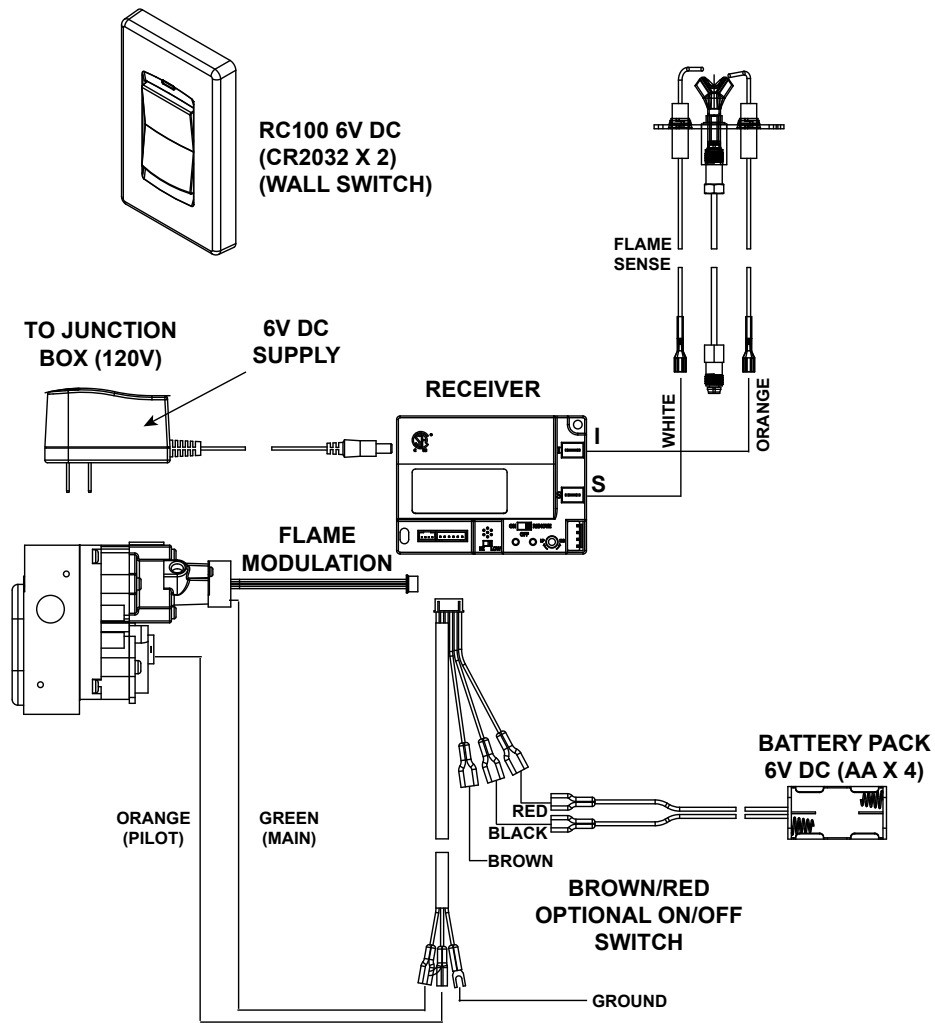


Figure 6. RC100 Wiring Diagram

## Power Outage

- If fireplace battery backup system IS installed at time of power outage, fireplace operation will not be interrupted.
- If fireplace battery backup system IS NOT installed at time of power outage, fireplace will shut off. To resume fireplace operation, install battery backup.

**WARNING! Risk of burns!** In the event of a wall switch malfunction, **DO NOT** attempt to turn off the fireplace manually using the control module. The decorative front will be hot and severe burns may occur. Call you dealer for assistance.

## Frequently Asked Questions/Troubleshooting

Symptom	Possible Cause	Corrective Action
Wall switch will not transmit	Batteries	Verify batteries are installed with positive side facing up. Verify batteries work properly.
Control module will not take commands from wall switch	Control module is not in "REMOTE" mode	Ensure module switch is set to REMOTE.
	Control module and wall switch are not programmed to each other	The control module will beep when it successfully receives a command. If it does not beep, clear module memory and reprogram wall switch.
	Control module is unplugged. In case of power outage, backup batteries are depleted or missing	If red LED light comes on when top button is pressed, verify that the control module is plugged in the fireplace junction box located in the controls area. Also verify that the batteries are installed in the battery pack.
Fireplace shuts down after extended periods	Built-in timer	The fireplace will automatically shut down after nine hours of continuous operation in REMOTE mode.
Fireplace is on but will not shut off with the remote control	External wired wall switch	The fireplace cannot be turned off by remote if an external wired wall switch is installed and in the ON position. Turn external wall switch to OFF.
	Control module failure	At control module, turn off fireplace by sliding the ON/OFF/REMOTE switch to OFF. Warning! Risk of Burns! Fireplace is hot. Use caution when accessing module.

Operation is subject to the following two conditions:

- (1) this device may not cause interference, and
- (2) this device must accept any interference, including interference that may cause undesired operation of the device.

You are cautioned that changes or modifications not expressly approved by the party responsible for compliance could void your authority to operate the equipment.

Please contact your Hearth & Home Technologies dealer with any questions or concerns.  
For the location of your nearest  
Hearth & Home Technologies dealer,  
please visit [www.fireside.com](http://www.fireside.com).