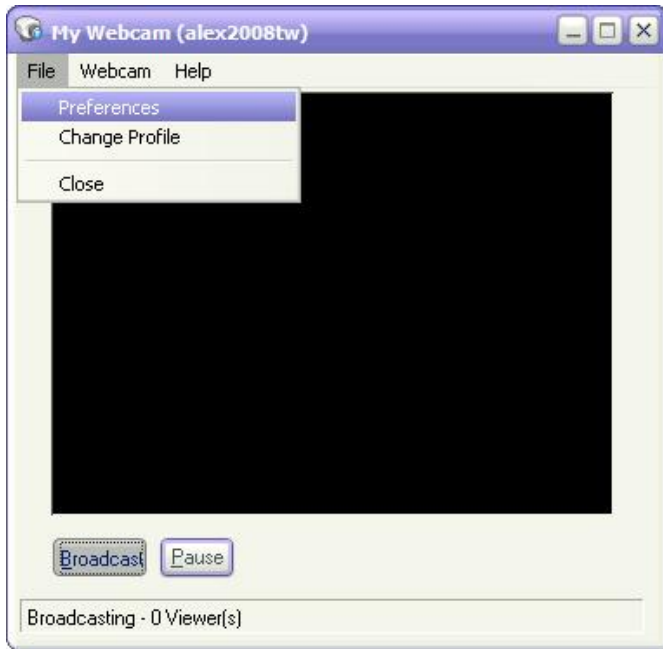
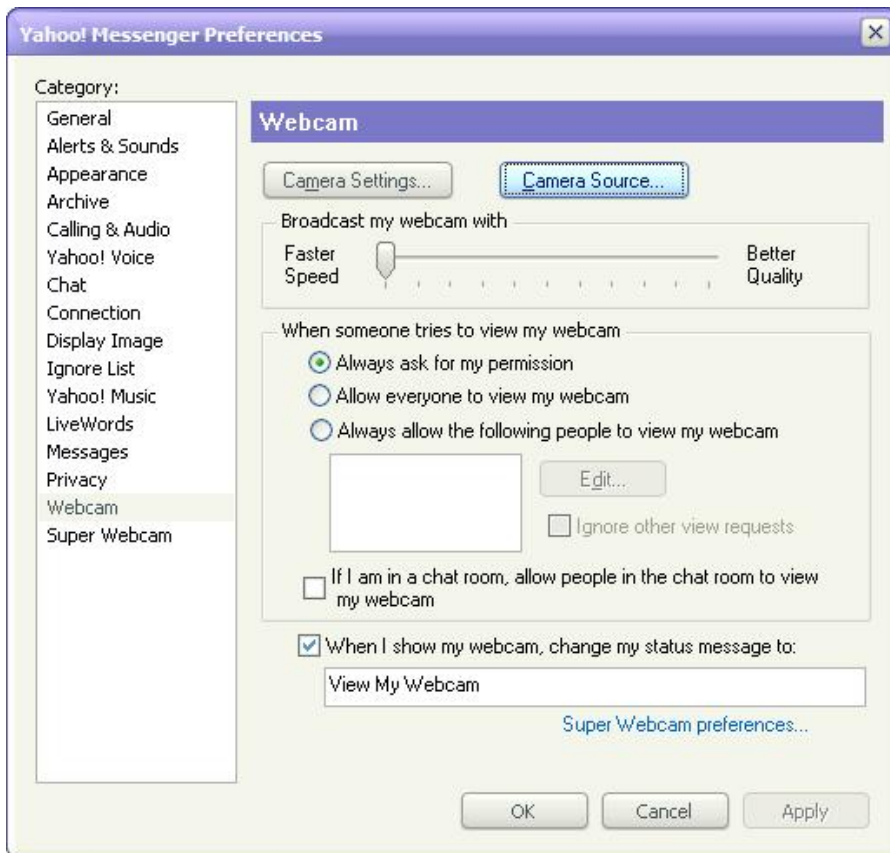


Select "File" and click "Preferences".



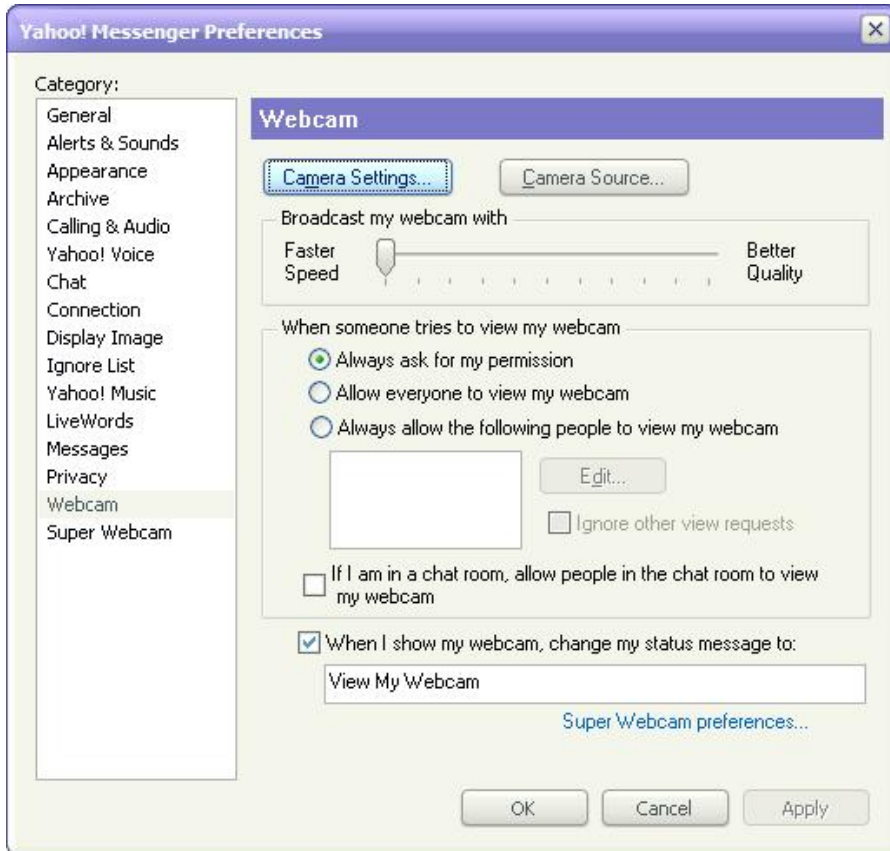
Select "Webcam" tab and click "Camera Source...".



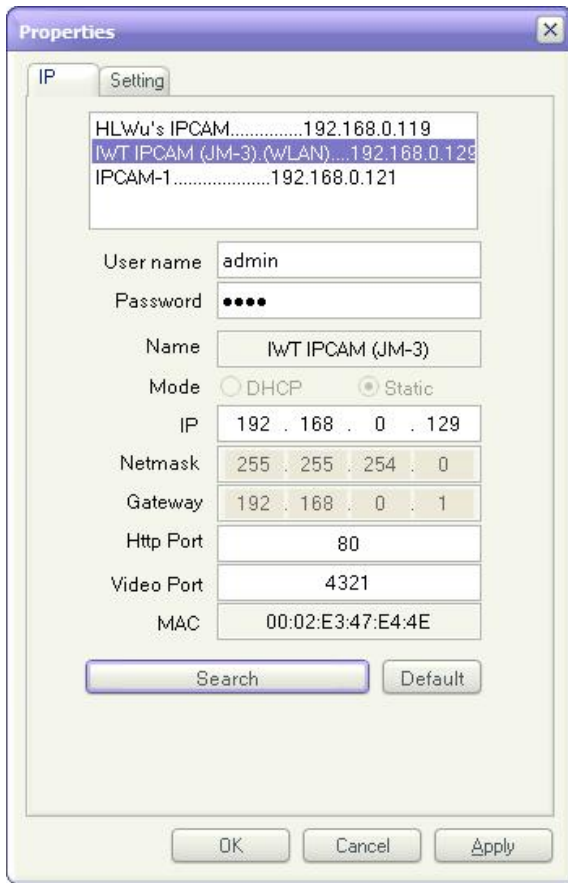
Pull down and select “Network Camera” and click OK.



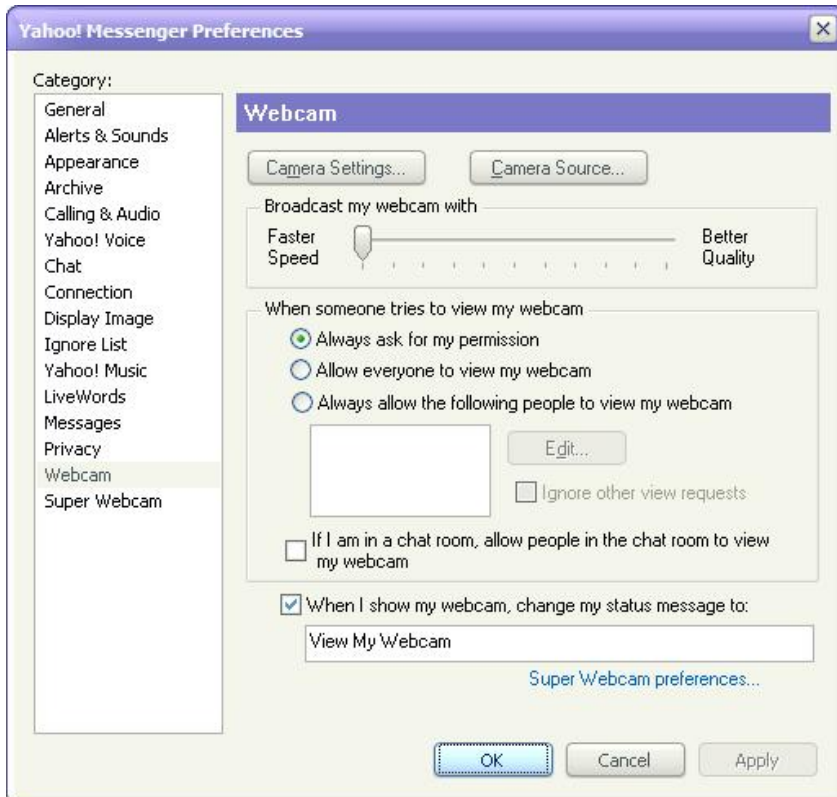
Click “Camera Settings...”.



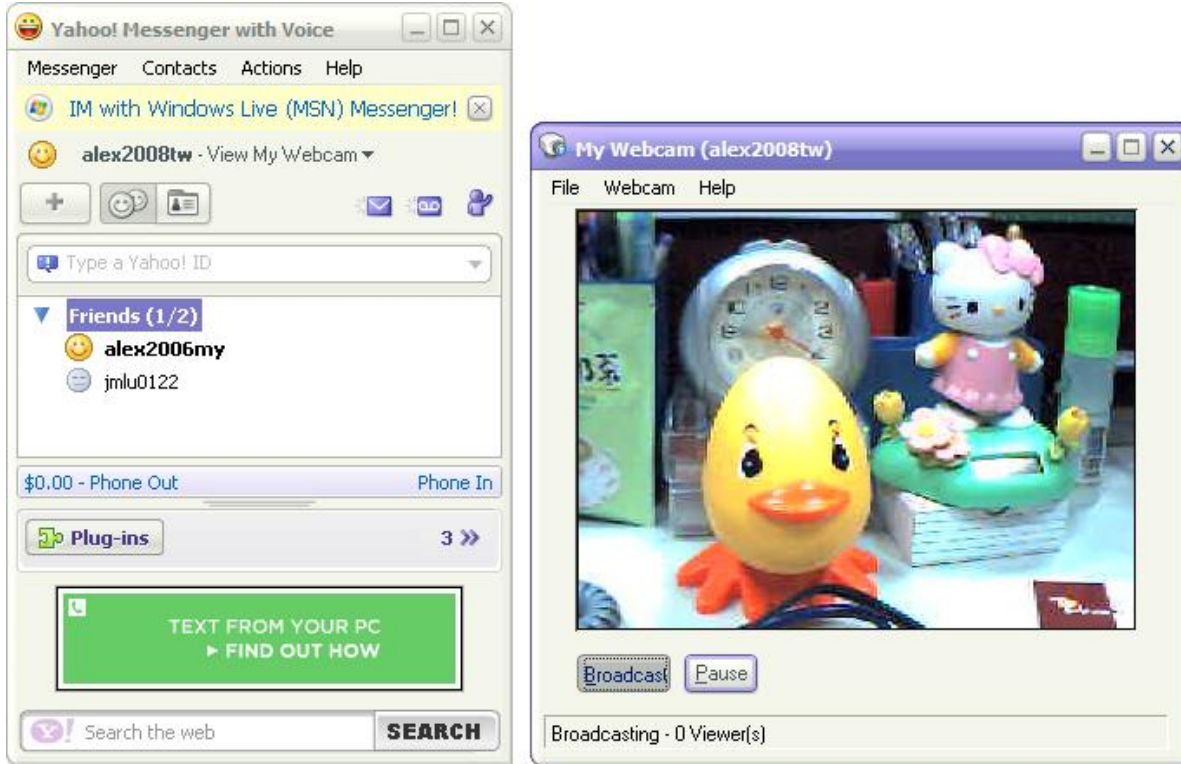
Select the IP Camera and click “OK”.



Click “OK” to finish.

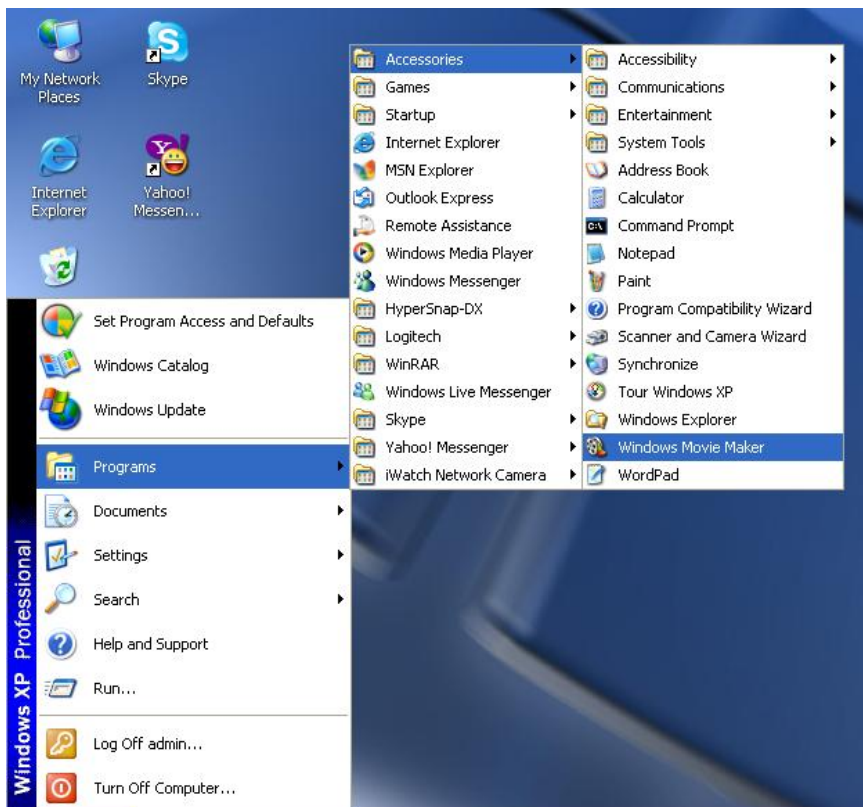


My Webcam shows video from IP Camera.

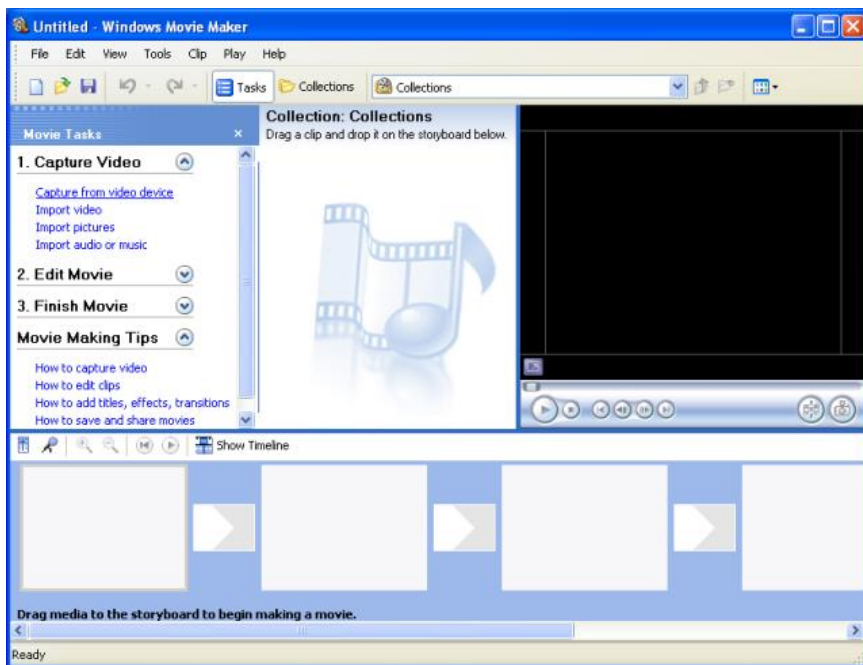


Using IP Camera with Windows Movie Maker

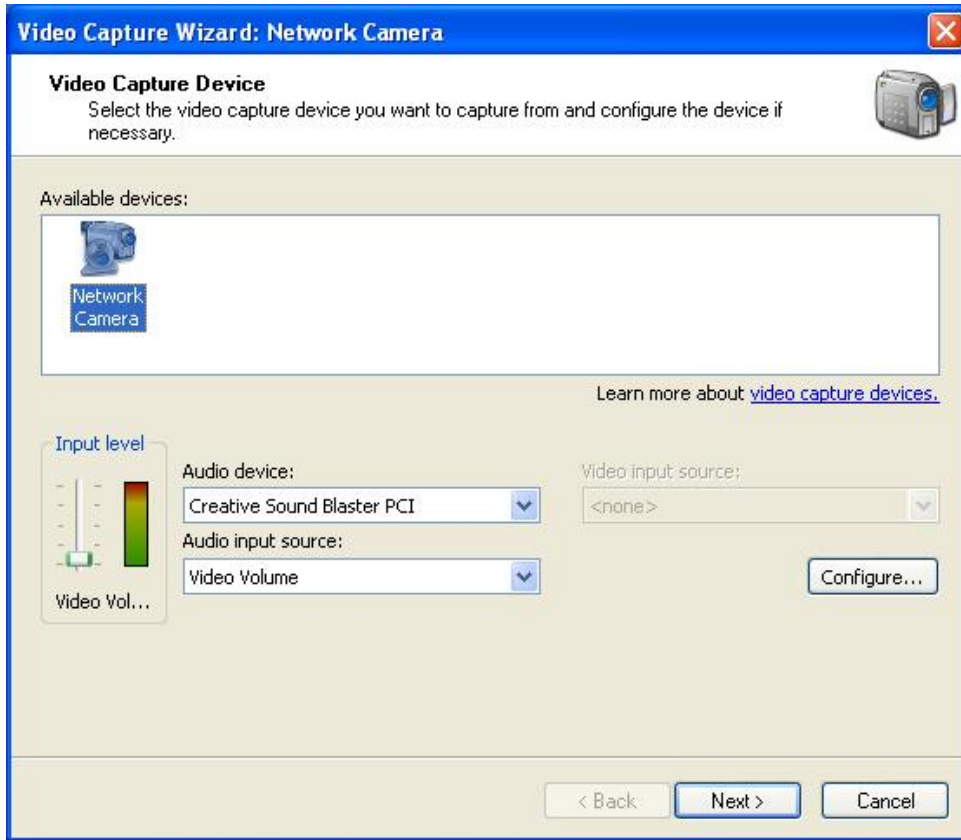
Launch Windows Movie Maker from “Start” -> “Programs” -> Accessories”. (Note: windows movie maker is available for Windows XP SP2 or later)



Select “capture from video device”.



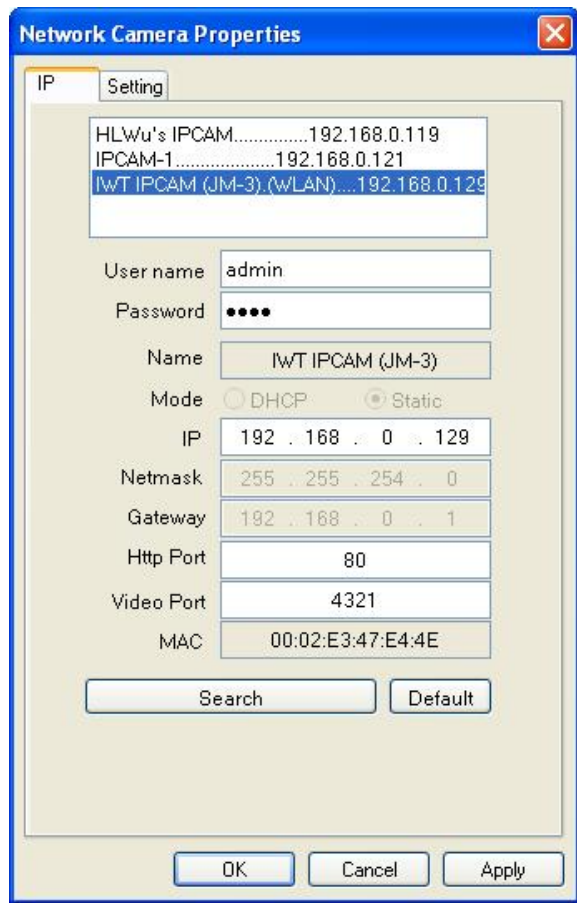
Select "Network Camera" and click "Configure..."



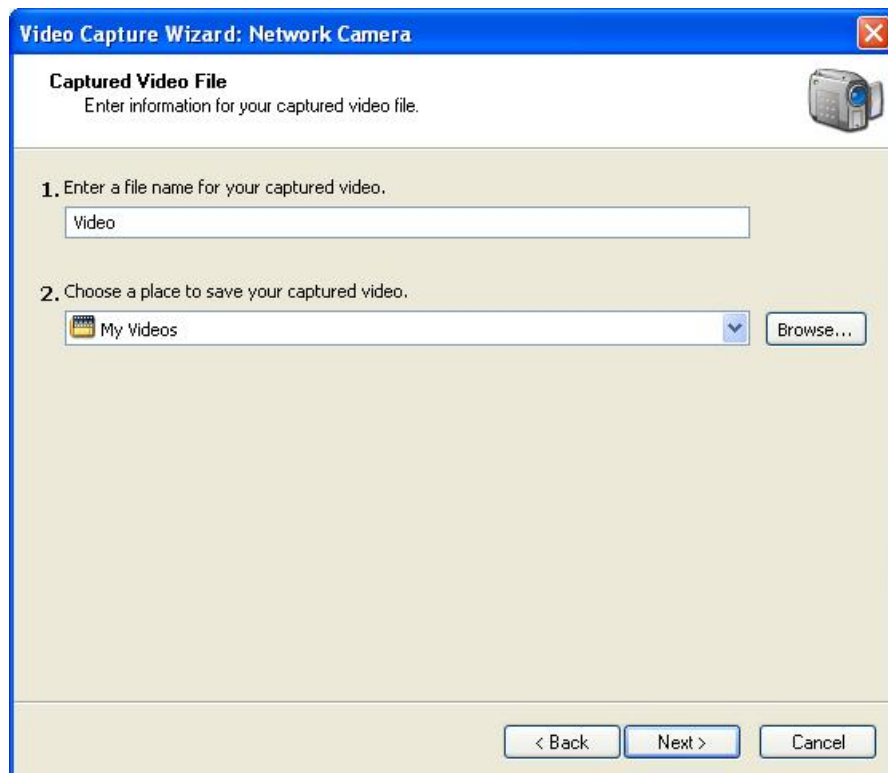
Click Camera Settings.



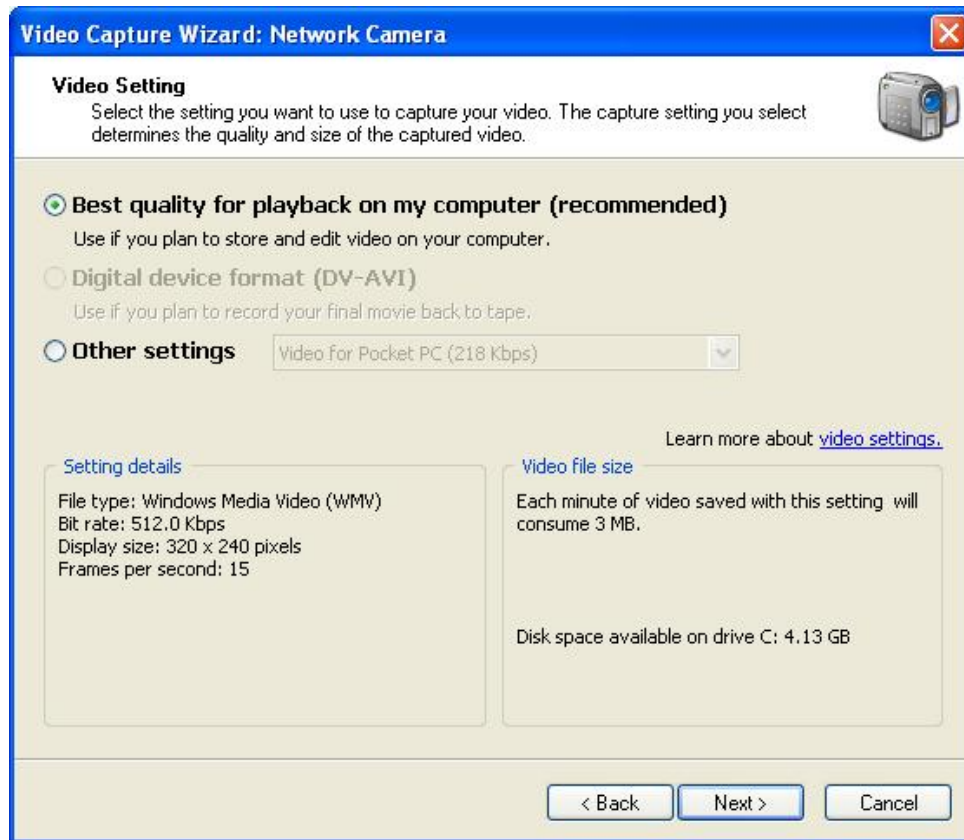
Select the IP Camera and click “OK”.



Click “Next”.



Click "Next".

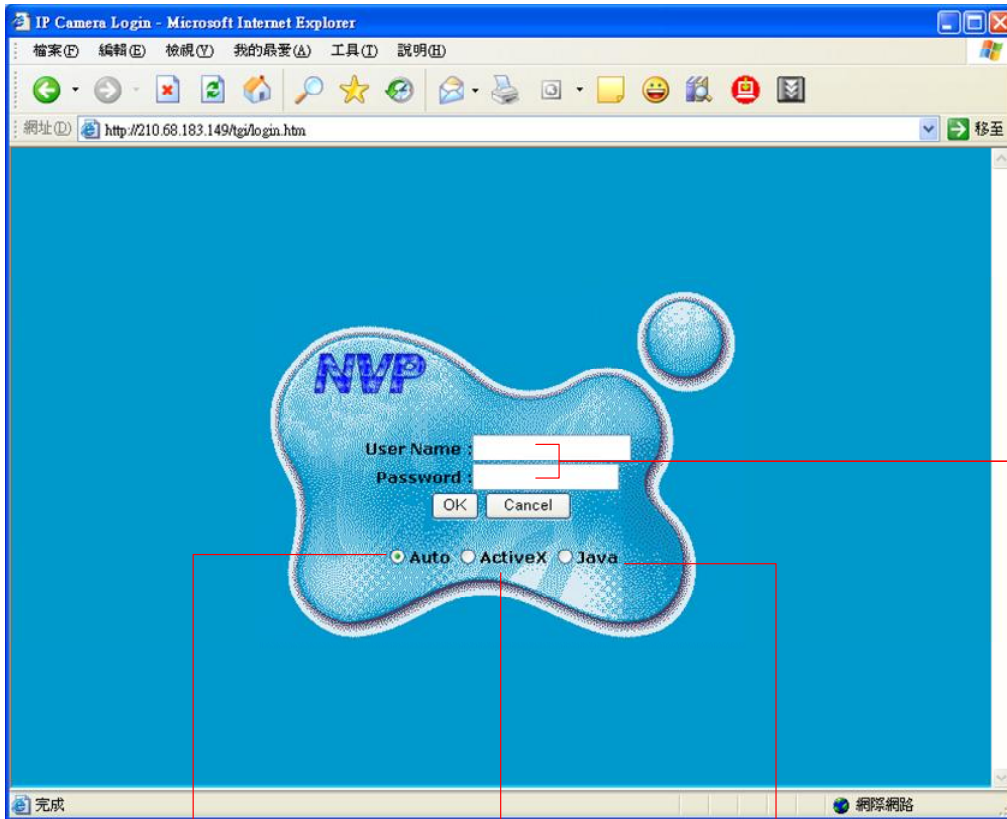


Click "Start Capture" to start recording, "Stop Capture" to stop, and "Finish" when finished.



System Definitions

Login Window



Default user/password is admin/1234

Auto: detected automatically

ActiveX: used for IE browser

Jave: used for Netscape (and FireFox) browser

View Window

Labels on the right side of the screenshot:

- Digital Pan/Tilt
- Snapshots (to c:\webcam)
- Logout
- IP Cam Settings
- Digital Zoom-in/ Zoom-out
- Image Setting
- On-screen display (OSD) (time stamp)
- CMOS sensor Refresh rate
- Recording (left click and then right click) in viewing area

Labels at the bottom of the screenshot:

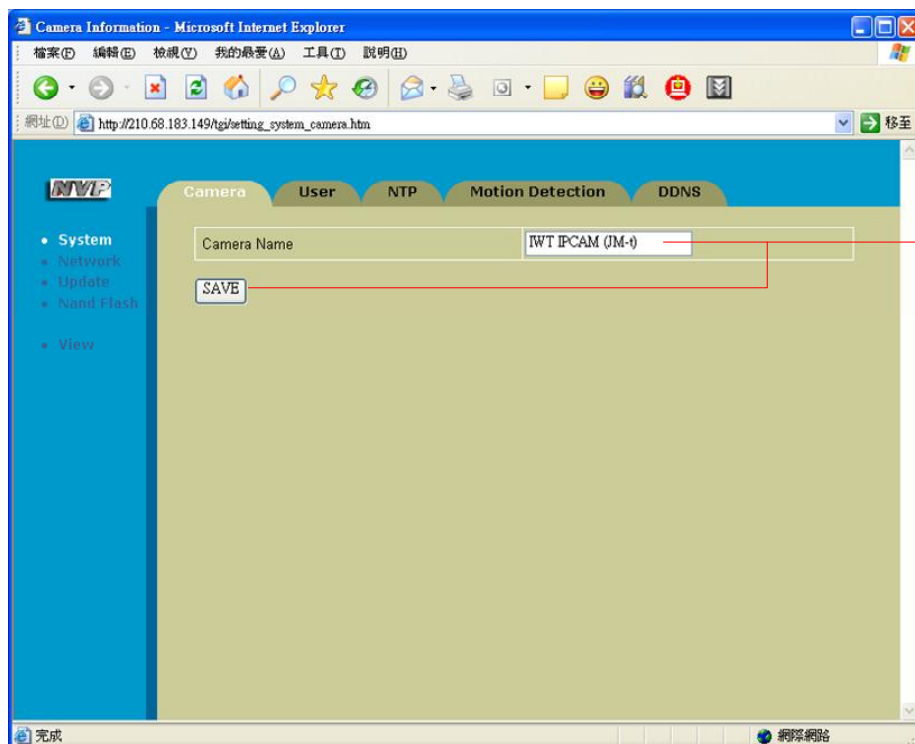
- Status: resolution/number of user/frame rate
Note: if displayed in red, it means motion detection occurs
- Status: IP Camera boot time

Labels on the right side of the screenshot:

- File format
- File length
- File path
- Pre-file name

System

Camera



Camera Name Setting

User

Existing user listing

Input old password to confirm

Input new user name

Input new password

Confirm new password

Login user listing

NTP

Synchronize to local PC or time server

Time zone setting

Motion Detection

Enable/disable motion detection

Enable e-mail when motion detected

Intervals between two successive mail

E-mail address and SMTP server settings

Enable ftp when motion detected

Intervals between two successive ftp

FTP server related settings

DDNS

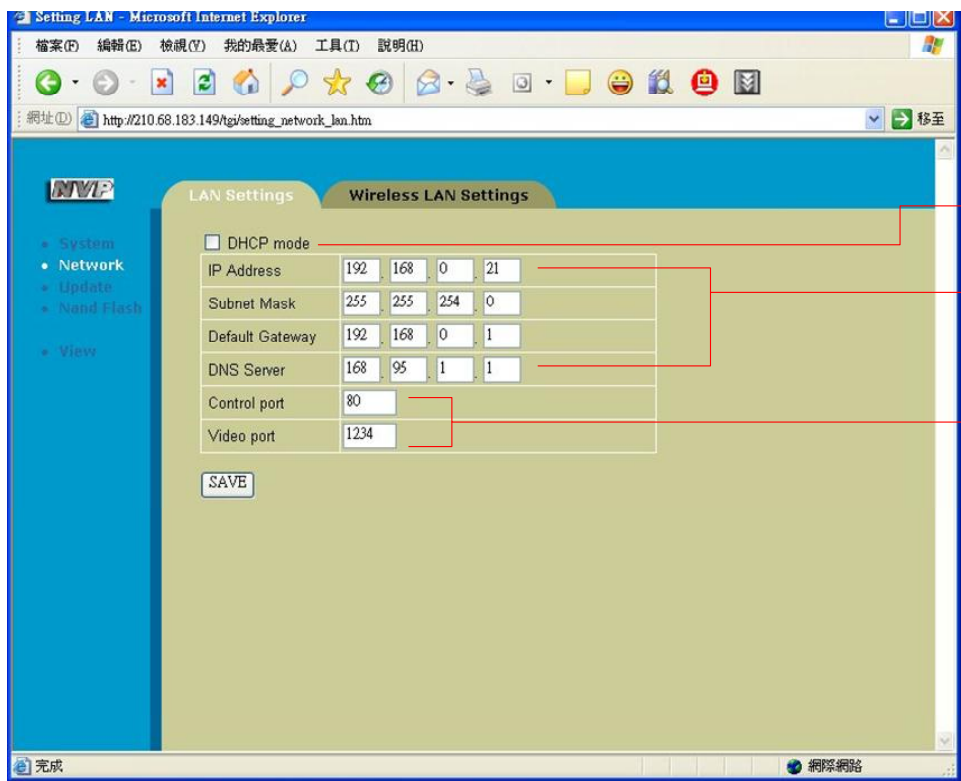
Enable/disable DDNS function

Currently DynDNS server is supported

Enter domain name, account, and password from DynDNS server

Network

LAN Settings



Checked: DHCP
Unchecked: Fixed IP

Network settings

IP Camera control and video port. Allow these two ports in port forwarding settings (of router) to enable remote surveillance

Wireless LAN Settings

Setting WLAN - Microsoft Internet Explorer
 網址 http://210.68.183.149/cgi/setting_network_wlan.htm

LAN Settings **Wireless LAN Settings**

SSID: IWT-2

Network Type: infrastructure

Authentication Mode: Open System

Channel: Auto

Wireless Mode: 802.11G

Enable WEP Key

WEP Encryption Type: 128Bit

Default Transmit Key: 1 2 3 4

Key 1: [Masked]

Key 2: [Empty]

Key 3: [Empty]

Key 4: [Empty]

SAVE

完成

- Enter the SSID of the wireless AP
- Select infrastructure or adhoc type
- Select open system or share key
- Select 802.11B or 11G mode
- Enable WEP Key data encryption
- Select 64 or 128 bit WEP type
- Set consistent key sequence as AP does
- Enter WEP key as wireless AP defines

Update

Update - Microsoft Internet Explorer
 網址 http://210.68.183.149/cgi/setting_upgrade.htm

Maintenance

Reboot Camera: REBOOT

Reload Default: RELOAD

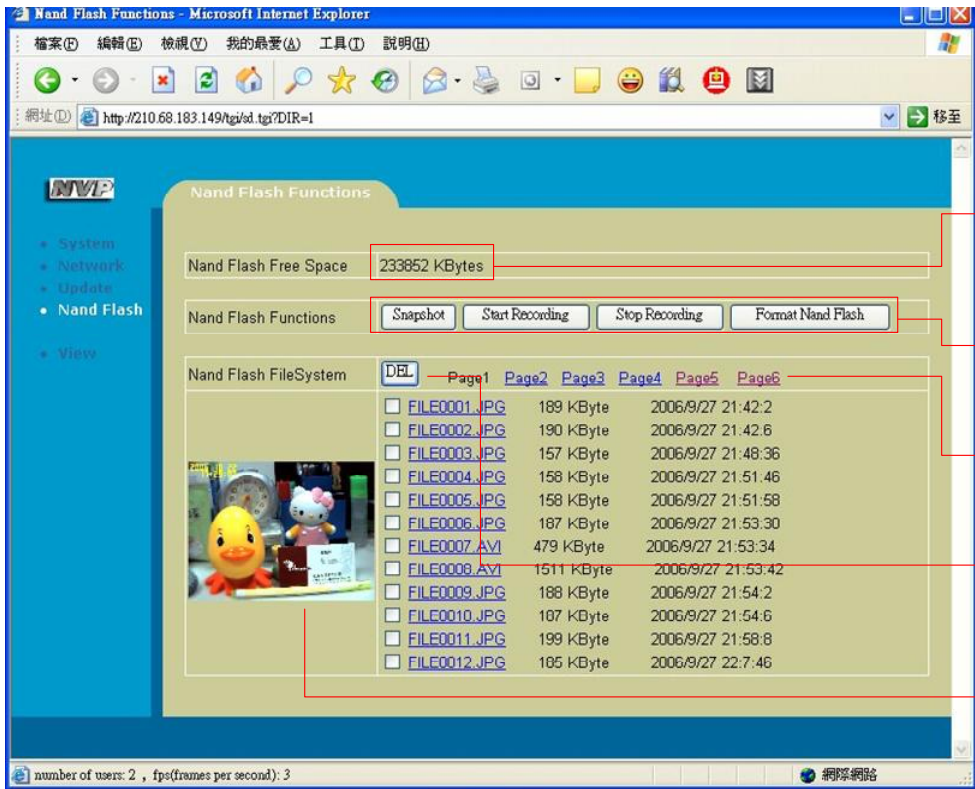
Update Firmware: UPDATE

Firmware Version: 0.656p

完成

- Click to reboot IP camera
- Click to reload factory default
- Online firmware update

Nand Flash



Free space of flash storage.
If your model doesn't support the feature, it shows "Nand Flash not available"

Nand flash operations:
snapshot/recording/format

Each page contains 12 pictures/movies (Currently 12 pages at most)

Select file and click "DEL" to remove

Preview window

Technical Specification

Specifications			
Models	i-Watch 130L i-Watch 130W: With additional wireless interface	Supported protocols	TCP/IP, SMTP client, HTTP server, FTP client, DHCP client, NTP client, DDNS
Image Sensor	1/4" Progressive Scan CMOS sensor 1.3M pixels. Minimum illumination: 2.0 lux @ F2.0	Reset button	Use stick to touch reset button to restore factory default settings
Lens	Fixed focal (6.0 mm, F2.0) with fine tuning Viewing angle 60°	Motion Detection	15 level sensitivity Snapshots transmitted via e-mail/ftp
Video Compression	Motion JPEG 5 level quality selection	OSD function	Image can be overlaid with timestamp
Resolutions	Up to 20 frames at 160x120 Up to 20 frames at 320x240 Up to 15 frames at 640x480	Built-in NAND flash (Optional)	512MB ~ 2GB
Image setting	Configurable contrast and brightness Configurable sharpness and saturation 3 level digital zoom	LED indicator	Dual color network connection indicator Green: ethernet Red: wireless LAN
Wireless interface (i-Watch 130W)	IEEE 802.11g 6 - 54 Mbps IEEE 802.11b 1 - 11 Mbps 1 - 11 channels Antenna gain: 2.0 dBi	Supported instant messenger	MSN messenger 7.5 or later Skype 2.5 or later Yahoo! Messenger 7.5 or later
Security	User access with password protection WEP 64/128 bit data encryption	Application	Home security Video communication Video sharing Baby / pet monitoring
Users	5 simultaneous users	Viewing system requirements	Pentium III CPU 500 MHz or higher, or equivalent AMD 256 MB RAM Windows XP, 2000, ME, or 98 Internet Explorer 6.0 or later
Connectors	Ethernet RJ45 DC in connector	Dimensions (HxWxD)	85 x 75 x 44 mm (antenna and stand excluded)
Power	5V DC, 2.0 A 4.5 watts consumption	Approvals	FCC / CE / RoHS
Operating conditions	5 - 50 °C (41 - 122 °F) Humidity 20 - 80% RH	Package includes	130L/130W network camera Documentation and software CD Ethernet cable (Cat/5e) AC adapter Quick installation guide Warranty card Camera stand bracket