

i-Watch IP Camera

Model: IWT-IPCAM-130WL



User's Manual

Federal Communication Commission

Interference Statement

This equipment has been tested and found to comply with the limits for a Class B digital device, pursuant to Part 15 of the FCC Rules. These limits are designed to provide reasonable protection against harmful interference in a residential installation. This equipment generates, uses and can radiate radio frequency energy and, if not installed and used in accordance with the instructions, may cause harmful interference to radio communications. However, there is no guarantee that interference will not occur in a particular installation. If this equipment does cause harmful interference to radio or television reception, which can be determined by turning the equipment off and on, the user is encouraged to try to correct the interference by one of the following measures:

- Reorient or relocate the receiving antenna.
- Increase the separation between the equipment and receiver.
- Connect the equipment into an outlet on a circuit different from that to which the receiver is connected.
- Consult the dealer or an experienced radio/TV technician for help.

This device complies with Part 15 of the FCC Rules. Operation is subject to the following two conditions: (1) This device may not cause harmful interference, and (2) this device must accept any interference received, including interference that may cause undesired operation.

FCC Caution: Any changes or modifications not expressly approved by the party responsible for compliance could void the user's authority to operate this equipment.

IMPORTANT NOTE:

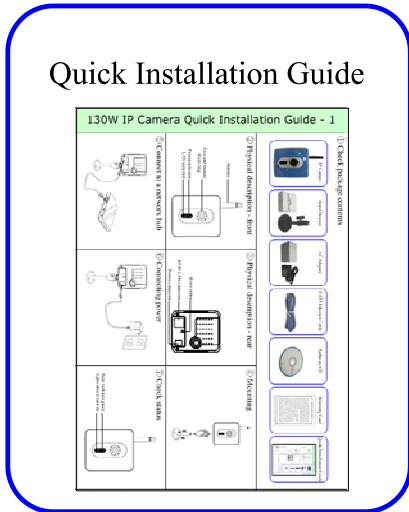
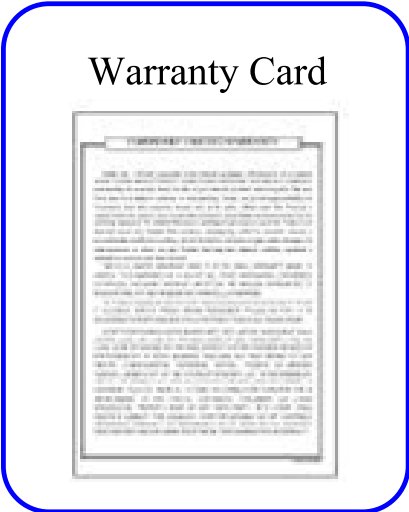
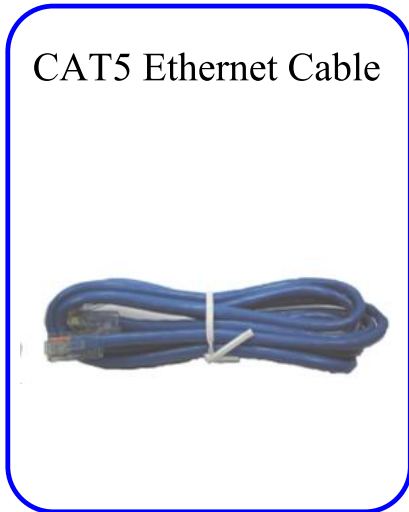
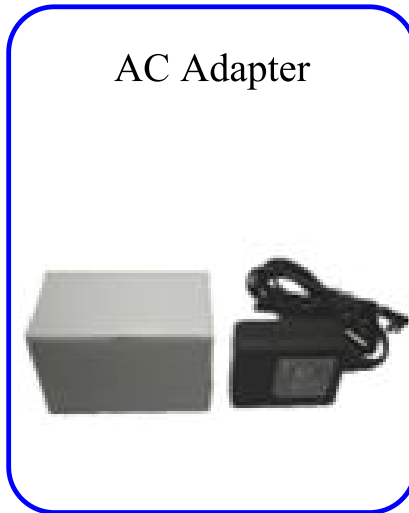
FCC Radiation Exposure Statement:

This equipment complies with FCC radiation exposure limits set forth for an uncontrolled environment. This equipment should be installed and operated with minimum distance 20cm between the radiator & your body. This transmitter must not be co-located or operating in conjunction with any other antenna or transmitter.

Table of Contents

Federal Communication Commission Interference Statement	2
Package Contents	4
Overview	5
Key Features	5
Physical Description	6
LED Indicators	6
System Requirements	6
Installation	7
Hardware Installation	7
Software Installation	9
Enabling Active X	9
PC Cam Driver and Java Environment Installation	11
Using IP Camera with MSN messenger	14
Using IP Camera with Skype	17
Using IP Camera with Yahoo! Messenger	20
Using IP Camera with Windows Movie Maker	25
System Definitions	29
Login Window	29
View Window	30
System	31
Camera	31
User	32
NTP	32
Motion Detection	33
DDNS	33
Network	34
LAN Settings	34
Wireless LAN Settings	35
Update	35
Nand Flash	36
Technical Specification	37

Package Contents



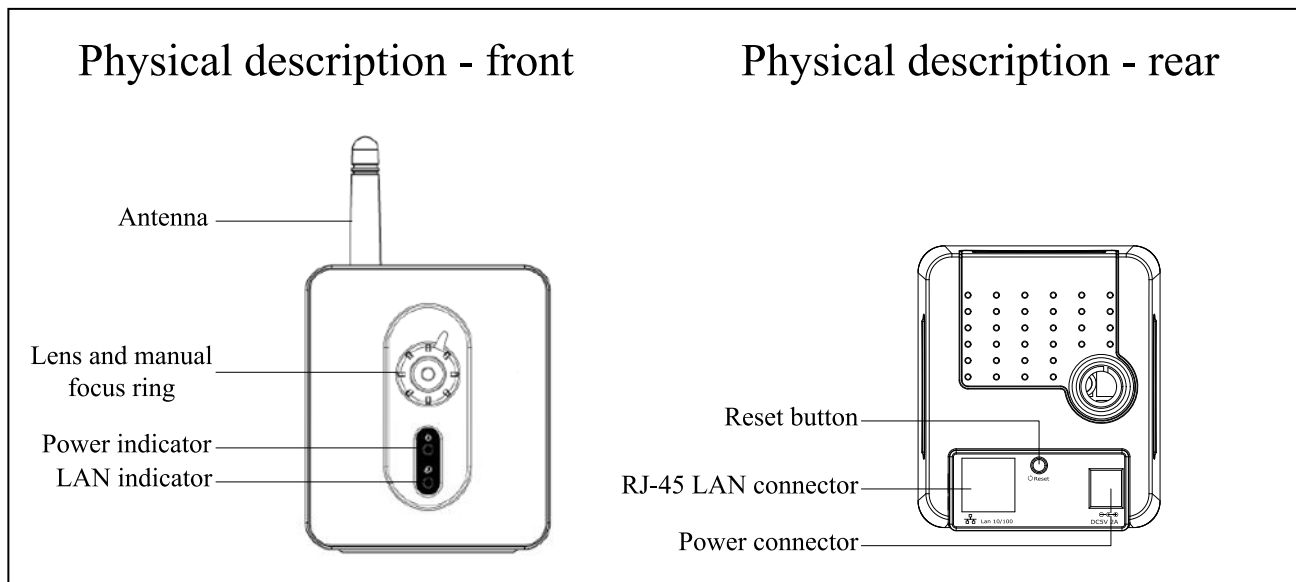
Overview

The 130W wireless/wired network camera is a compact-size, easy-to-use and cost-effective solution ideal for home security and entertainment. With 1.3M pixel CMOS sensor technology, 130W provides excellent image quality with digital pan/tilt/zoom monitoring capability. 130W comes with a built-in web server that can be viewed via a standard browser such like Internet Explorer or Netscape browser. Snapshots and recording can be taken directly from the web interface, stored within or without PC (via optional built-in 512MB~2GB NAND flash storage). Wired and wireless connection are both supported, which enables easy and clear camera installation. Providing a better way for baby or pet monitoring and video sharing, 130W IP Camera uniquely features instant messenger interface, turning network camera into a convenient PC camera. 130W is breaking the rule that conventional network camera follows.

Key Features

- Stand-alone network camera, no need to attach to PC
- Motion JPEG compression engine
- Built-in web server for monitoring via standard browser
- Local access through Ethernet and 802.11 b/g wireless LAN (130W) , remote access through Internet
- 15 levels motion detection
- Digital pan/tilt/zoom
- Optional 512MB~2GB built-in NAND flash. Snapshot of 1280 x 1024 resolution, record, and download through integrated web interface
- Support instant messenger video communication (MSN, Skype, Yahoo! Messenger)
- Support Windows Movie Maker, recording as .wmv file (VC-1 encoding, better compression rate than MPEG-4)

Physical Description



LED Indicators

LED	Color	Description
Power	Green	System ready
LAN	Green	LAN ready
LAN	Red	WLAN ready

System Requirements

The system requires an Ethernet port and an IP address. To view the IP camera images, each computer requires:

- Microsoft Windows 98, ME, NT4.0, 2000, or XP. Mac or Linux based machine.
- Microsoft Internet Explorer 5.x, or later.
- Mozilla FireFox 1.5.0.7 or later

To use instant messenger with IP camera, each computer requires:

- MSN messenger 7.5 or later
- Skype 2.5.1.137 or later
- Yahoo! Messenger 7.5 or later

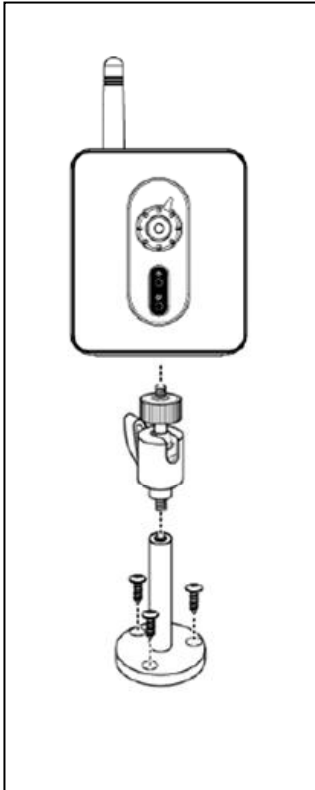
To use Windows Movie Maker, each computer requires:

- Microsoft Windows XP SP2

Installation

Hardware Installation

1. Assembling the stand



Assemble the stand and fix it to the camera as shown.

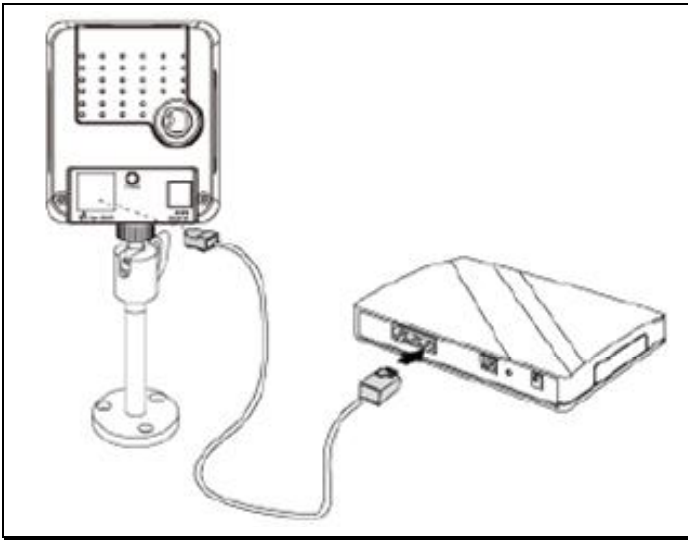
Use the three screws and plugs provided to fix the stand bracket to a wall, or other convenient fixing point.

The stand can be adjusted to allow the camera a full 360° of rotation and a pan and tilt action.

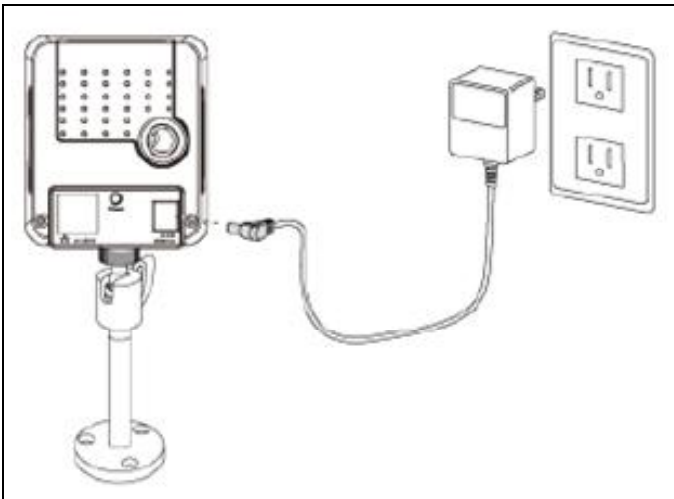
Warning

The camera is not waterproof and should not be mounted outside or in a position where it could become wet.

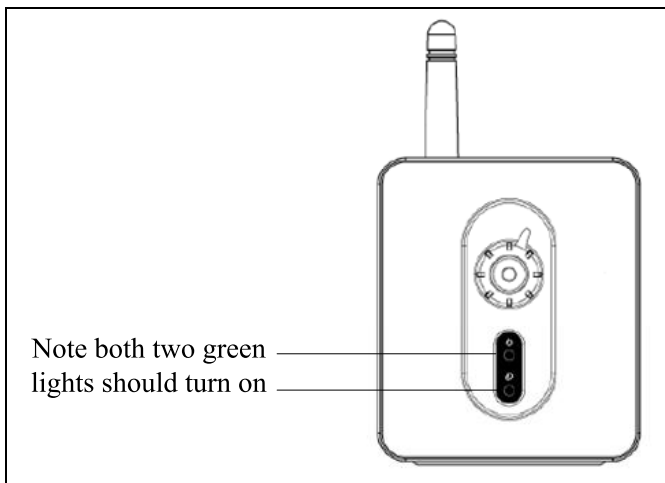
2. Connect to a network hub



3. Connecting power



4. Check status.

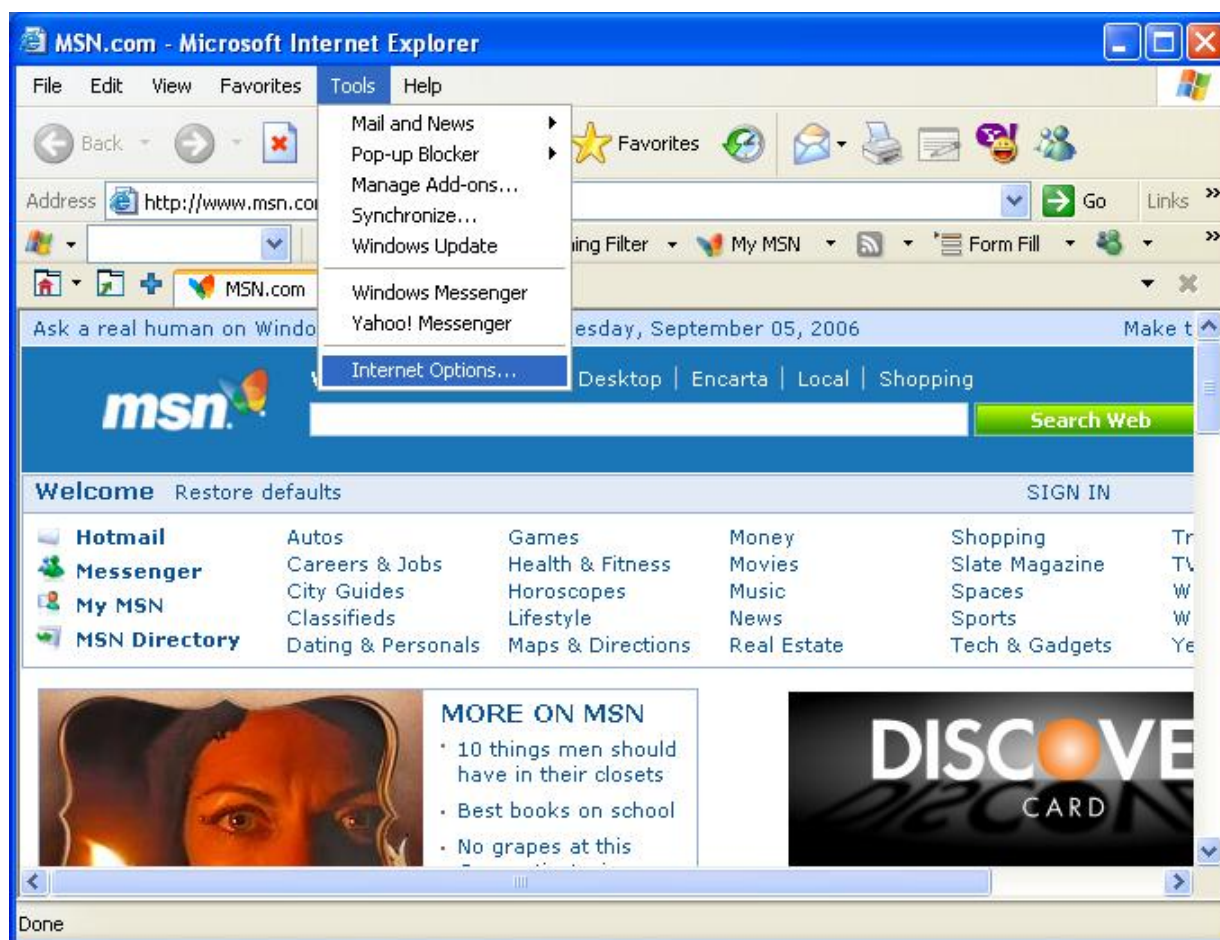


Software Installation

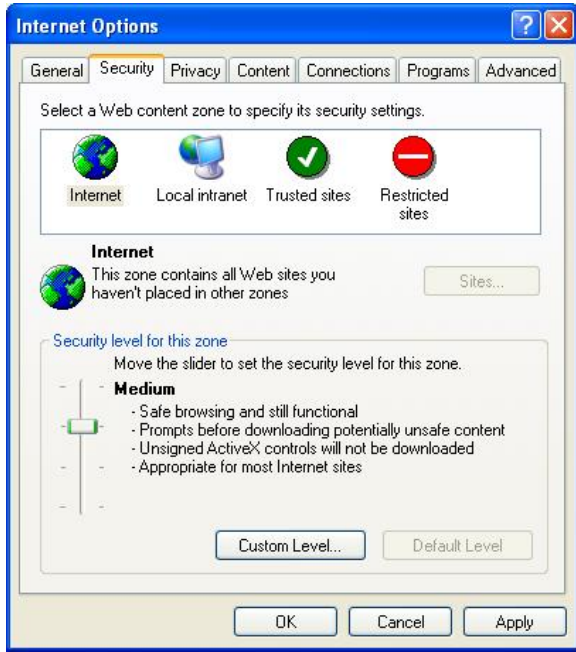
Enabling Active X

Your browser must have Active X enabled to connect to the IP camera. To enable Active X in your browser:

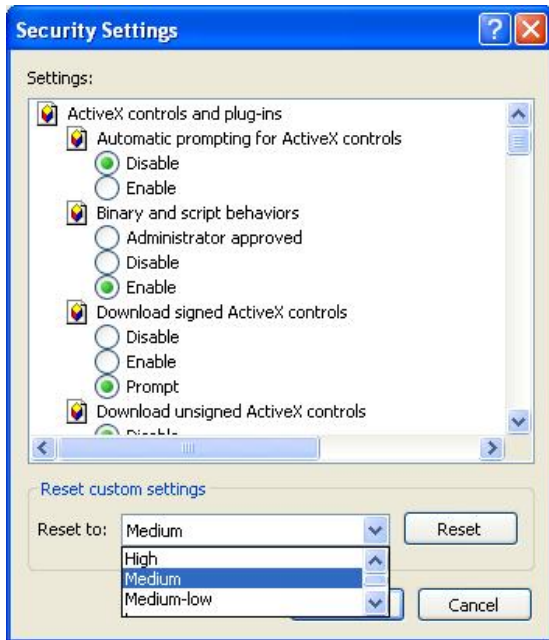
1. Open your internet browser.
2. Click on the tools menu at the top of the screen and select Internet Options...



3. Select the security tab from the internet options menu.



4. Click Custom Level button and enable all the Active X features in the list using the radio buttons or reset custom settings to Medium level.



PC Cam Driver and Java Environment Installation

1. Run setup program from software CD



Press OK to continue setup. If your system has not been installed of Java Run-time Environment, the setup program will install it first and then back to following steps.

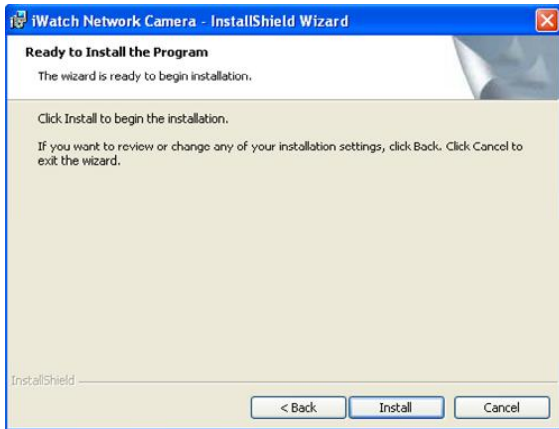
2. Click next



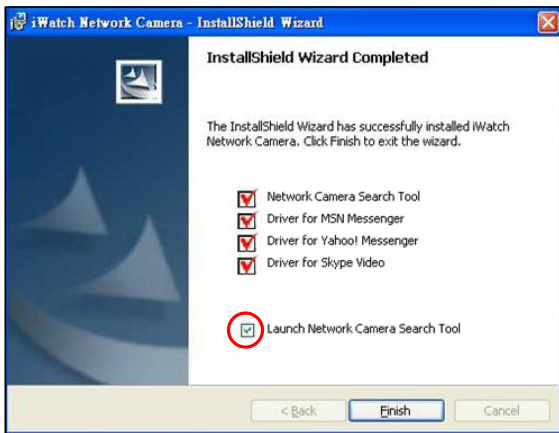
3. Click next



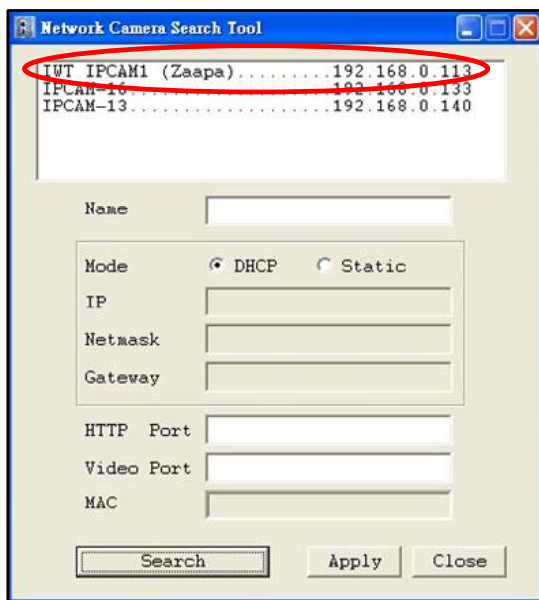
4. Click Install



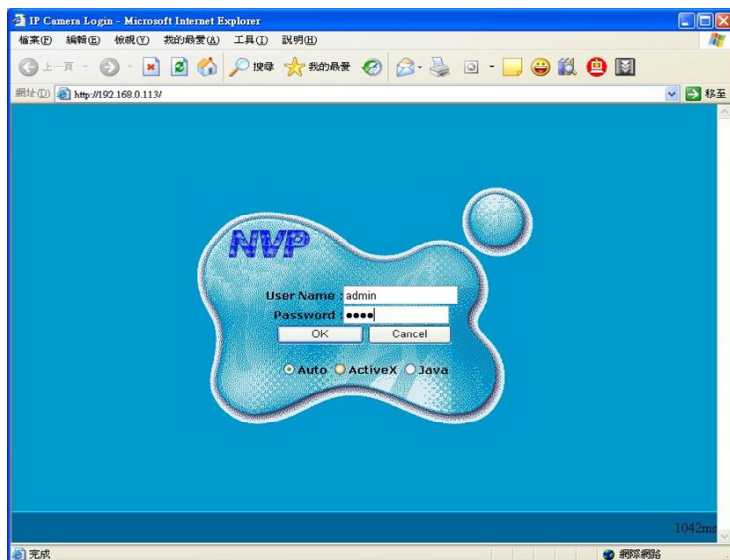
5. Click Finish and launch the network search tool



6. Double click the listed item in the tool to open browser window



7. Login in as “admin”. The default password is “1234”.



8. Use manual focus ring to adjust to intended focus range



Using IP Camera with MSN messenger

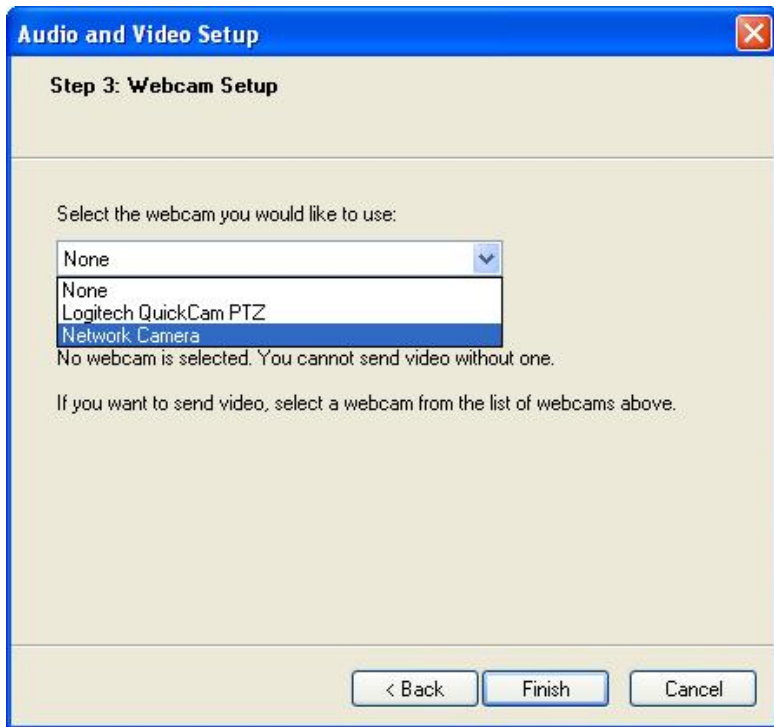
In MSN, select “Tools” and then “Audio and Video setup...”



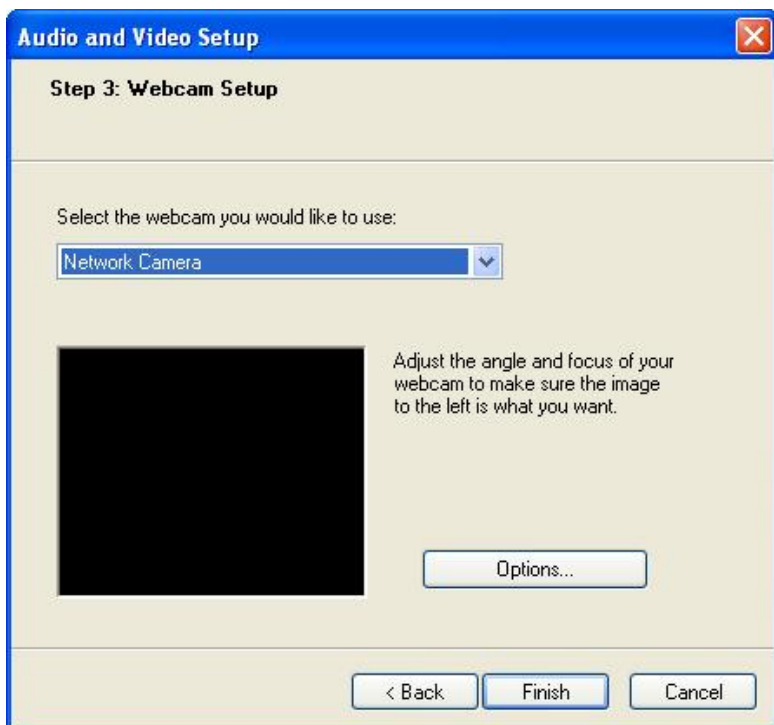
Click next.



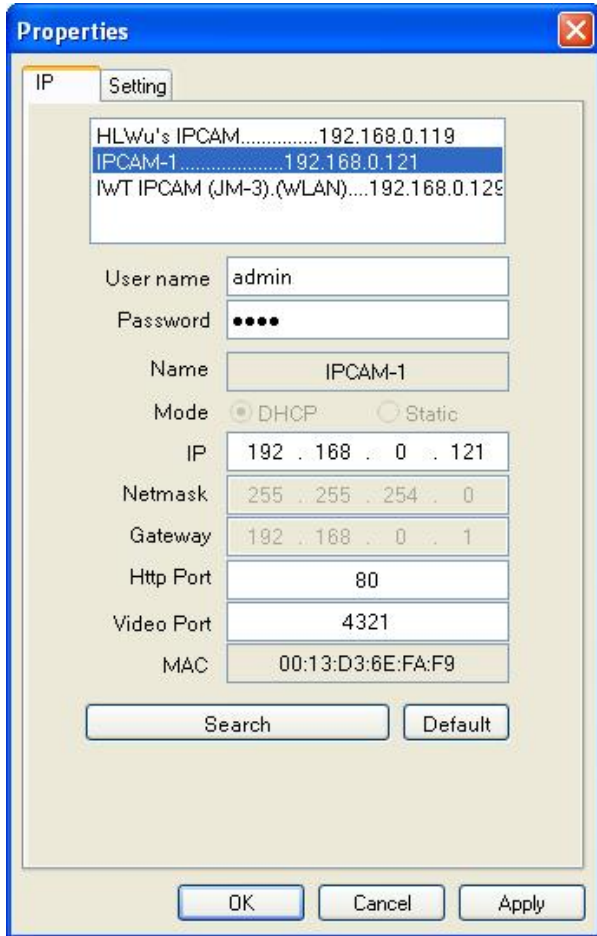
Click next to Step 3: Webcam setup. Pull down the menu and select "Network Camera".



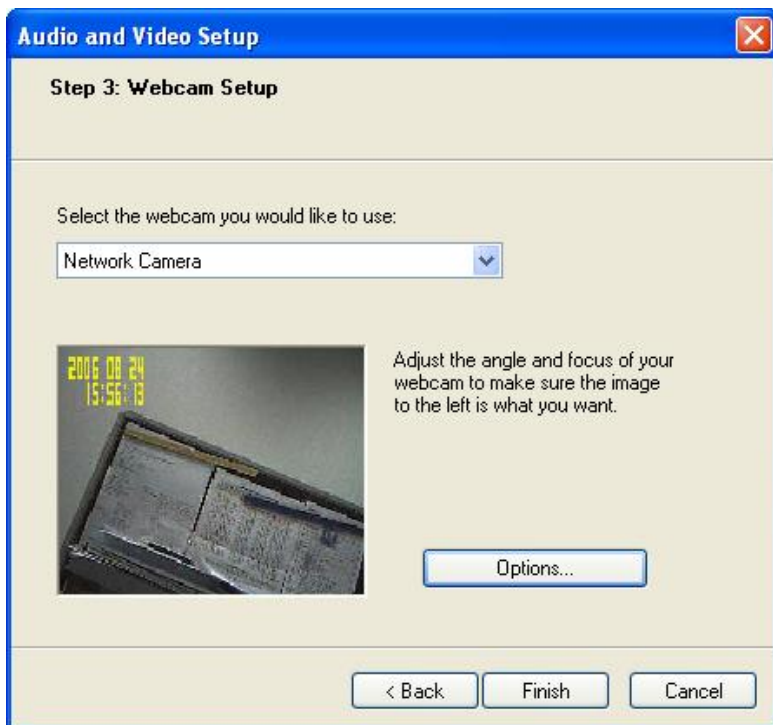
The default screen is blank. Click "Options..." to search the IP Camera.



Select the IP Camera you like and click OK.

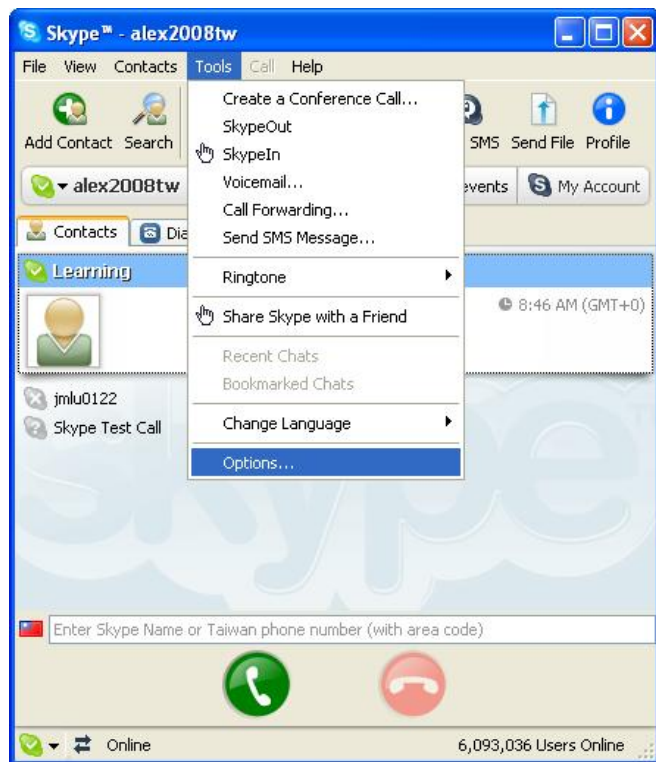


The screen reflects the viewing image of the IP camera. Click finish.

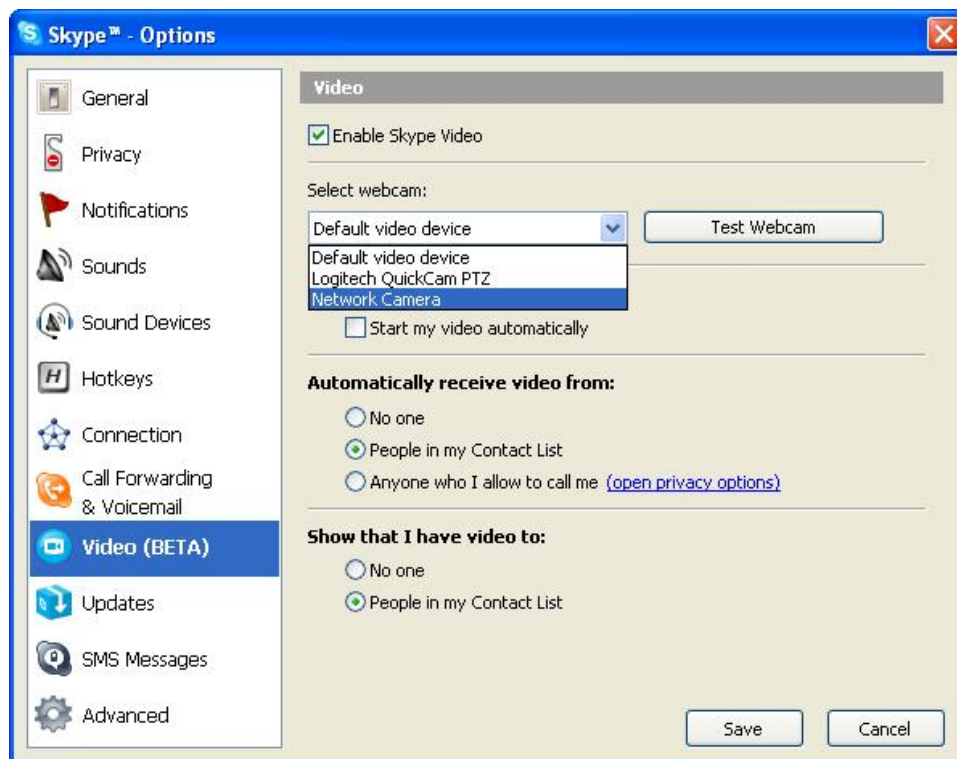


Using IP Camera with Skype

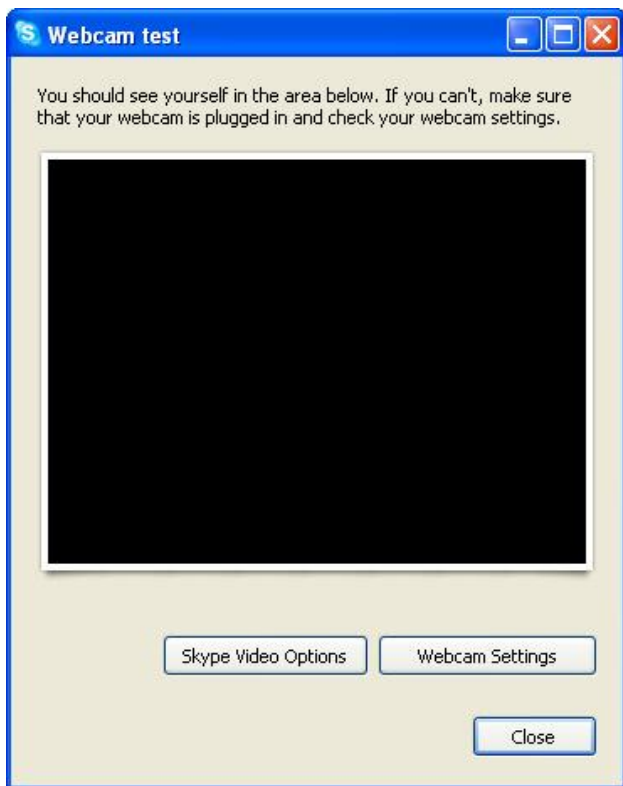
In Skype, select “Tools” and click “Options...”.



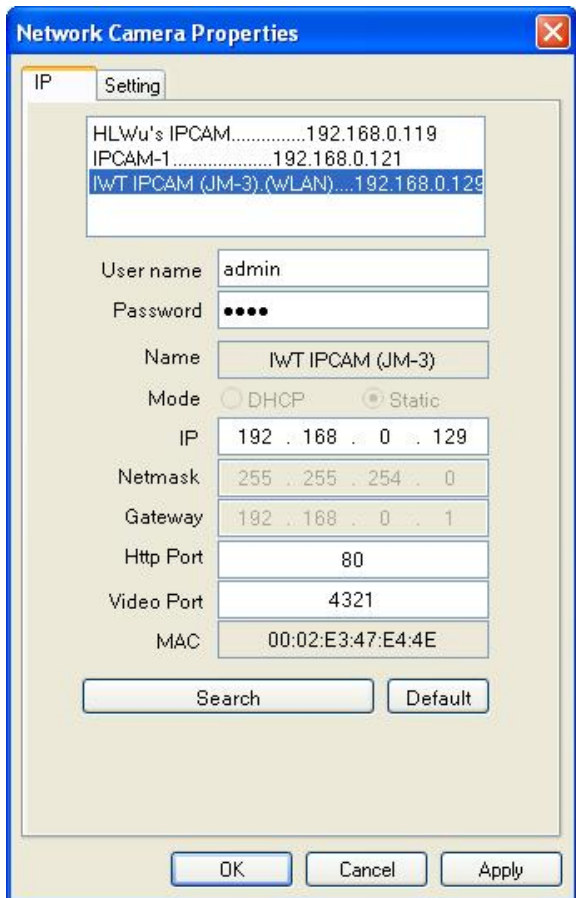
Select “Video (Beta)” tab and pull down to select “Network Camera”. Click “Test Webcam”.



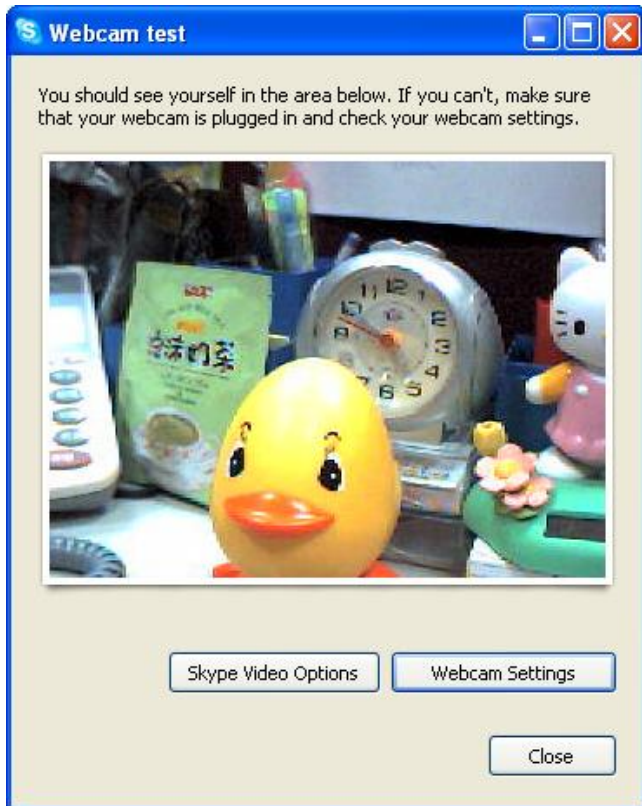
Click "Webcam Settings".



Select the IP Camera and click "OK".



Click "Close".



Using IP Camera with Yahoo! Messenger

In Yahoo! Messenger, select “Messenger” and click “My Webcam”.



Click OK.

