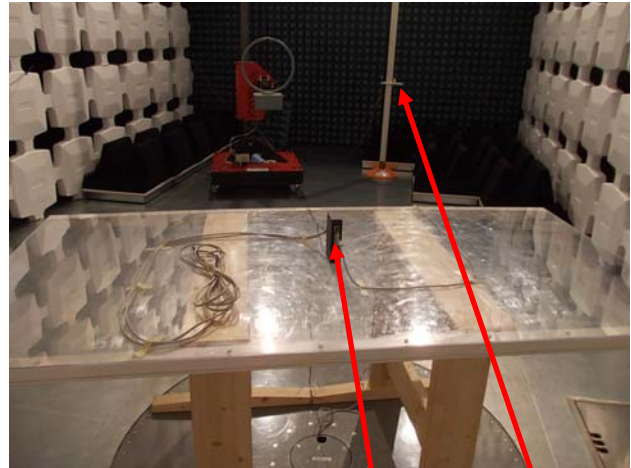


Foto dei Setup di Prova / Pictures of the tests setup

Spurious Radiated Emissions and Restricted Bands of Operation, Section 15.209 and 15.205

DUT with integral antennas: Radiated emissions test setup

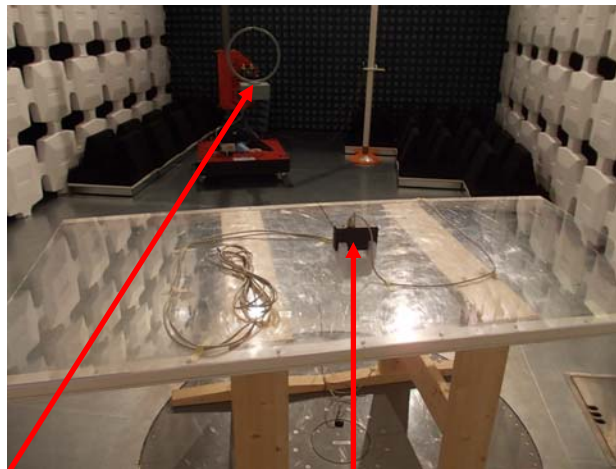
Measurements from 9KHz to 30MHz



DUT in X Axis pos.

DUT in Y Axis

WLAN access
point and
downlink GSM
antennas

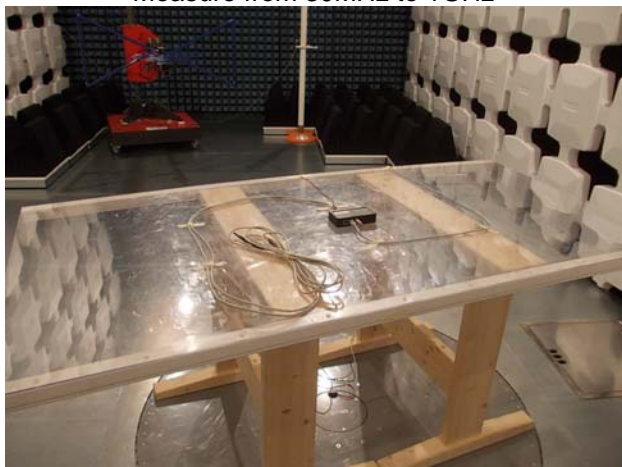


Loop Antenna

DUT in Z Axis

Note: measures were repeated with EUT oriented in the three coordinate directions X,Y,Z. Only measures with EUT oriented along X axis are depicted in the following page. PC is connected to DUT, but placed outside the semi-anechoic chamber.

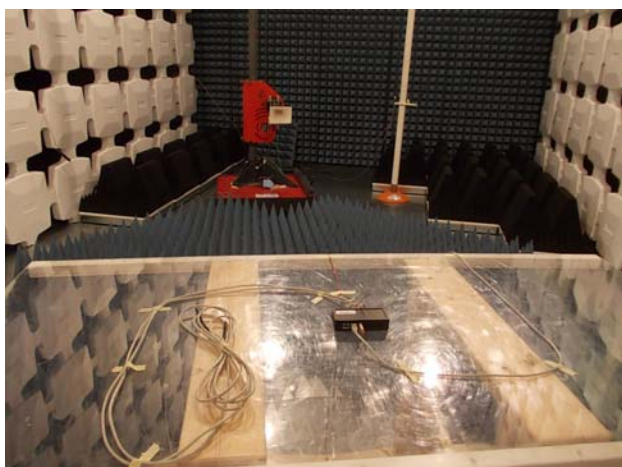
Measure from 30MHz to 1GHz



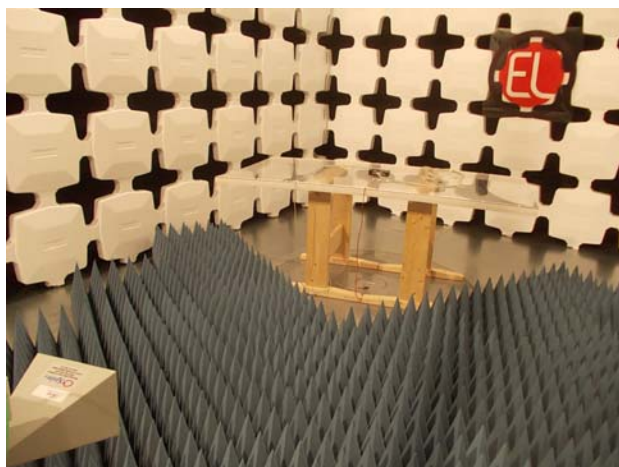
Measure from 1GHz to 6GHz



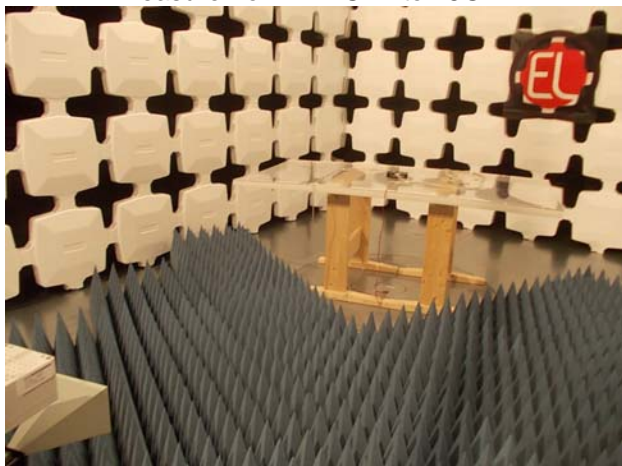
Measure from 6GHz to 8.2GHz



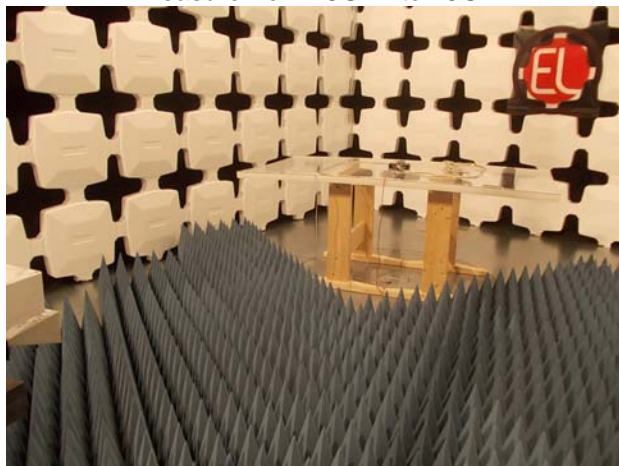
Measure from 8.2GHz to 12.4GHz



Measure from 12.4GHz to 18GHz

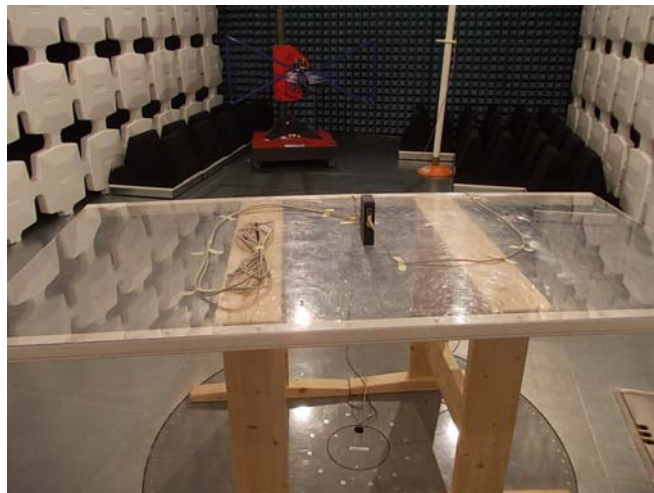


Measure from 18GHz to 25GHz



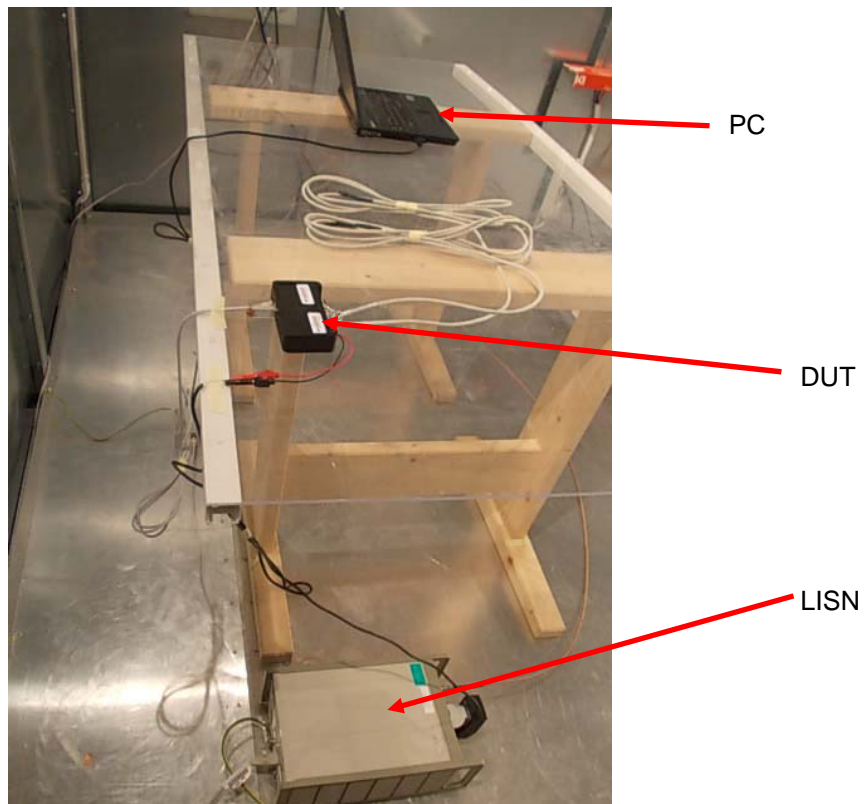
EUT N° 13LA00163/03

Measure from 30MHz to 1GHz



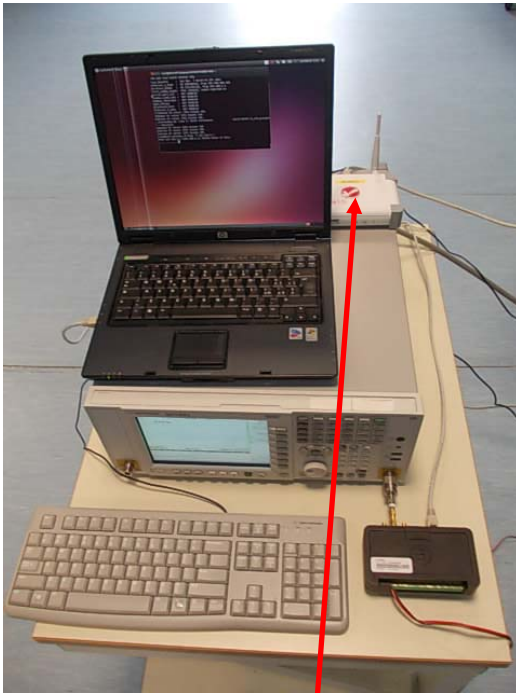
AC port conducted emissions test setup

AC Power Line Conducted Emissions, Section 15.207



WLAN temporary antenna port conducted test set-up:

DUT with antenna temporary output connected to the Spectrum Analyser



Access Point
WLAN



10dB Attenuator

DUT with temporary
antenna port