

# Panel XS Reader, Mullion XS Reader and Glass XS Reader

## P1825 and P1826 WRDP0M, WRDM0M

Product marking

Version	Date	Changes	Author
1.0	24/10/2022	First edition	M.U.

# Table of contents

<b>1</b>	<b>WRDP0M</b> .....	<b>3</b>
	Trademark.....	3
	CE type.....	3
	Label.....	4
<b>2</b>	<b>WRDM0M</b> .....	<b>6</b>
	Trademark.....	6
	CE type.....	7
	Label.....	8

This equipment contains several markings to ensure traceability and fulfilment of the marking requirements established by international regulations.

In this product, the marking information is divided into three categories: trademark, CE type and label. The information contained slightly varies for each electronic model.

## 1 WRDP0M

### Trademark

The manufacturer's name, SALTO, is marked on a sticker placed on the front enclosure of the product after installation. The trademark is visible to the final user.



### CE type

The CE type reference of this equipment is P1825 and it is marked on the sticker placed on the front enclosure of the product after installation.

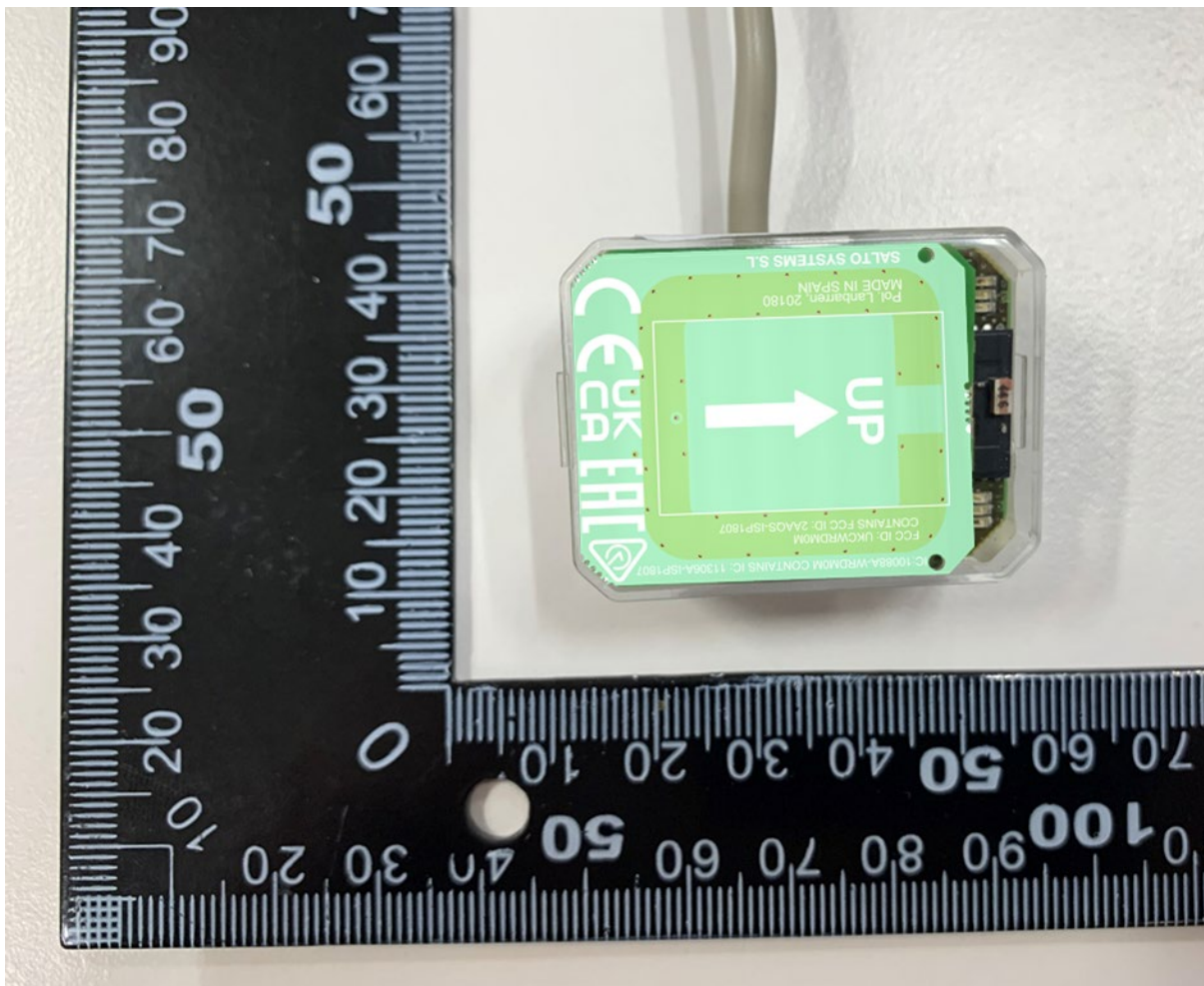
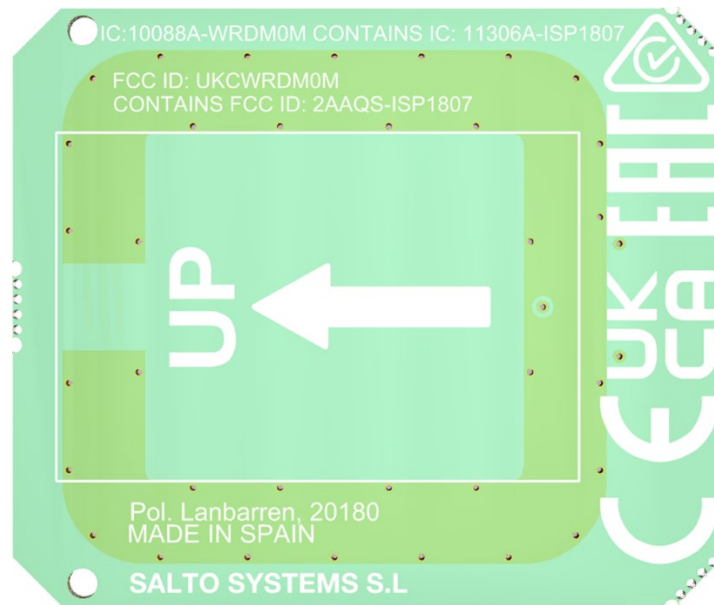
The CE type is visible even after installation allowing the identification of the product when it is installed as intended. This item number is also used as an identifier on the EU Declaration of Conformity. Together with the electronic model (marked on the label) is used for the traceability of the equipment.



## Label

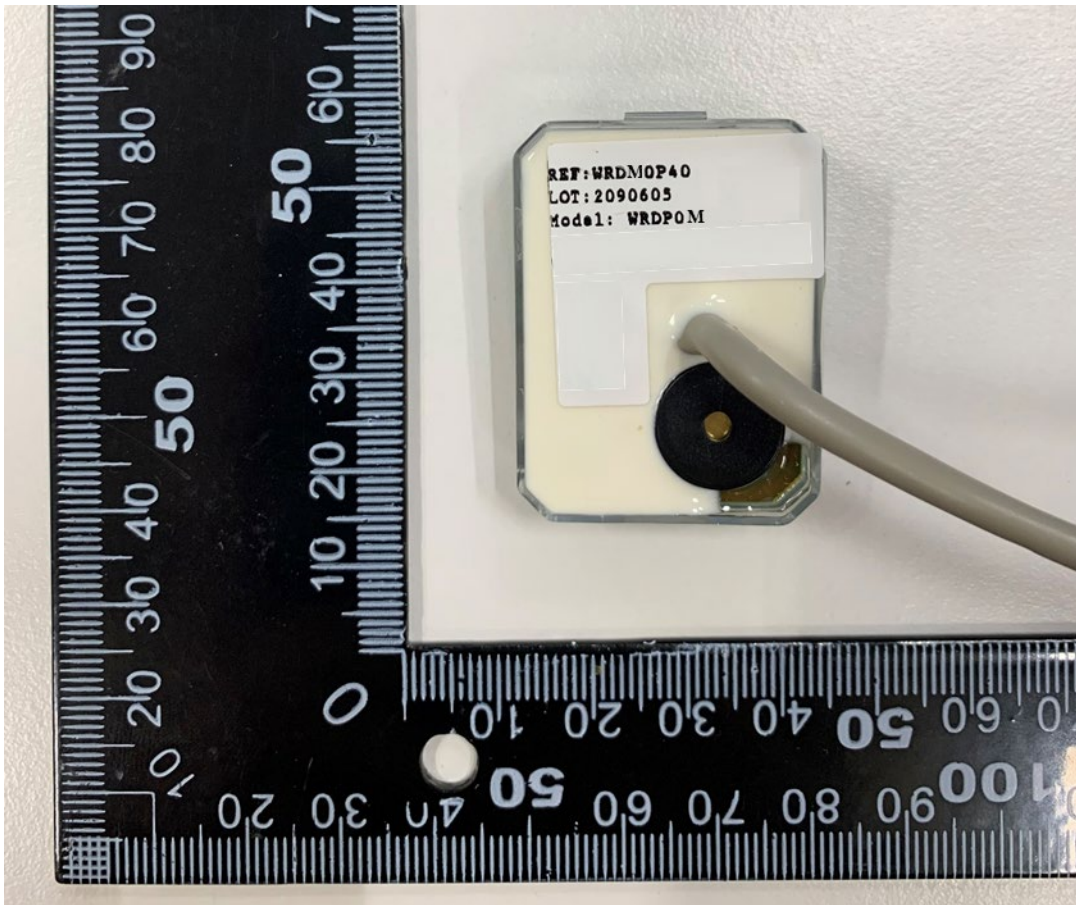
The required information is printed on the antenna circuit and on the label placed on the rear side of the equipment.

The antenna circuit contains the following information:



The label contains the following information:





## 2 WRDM0M

Mullion XS Reader and Glass XS Reader

### Trademark

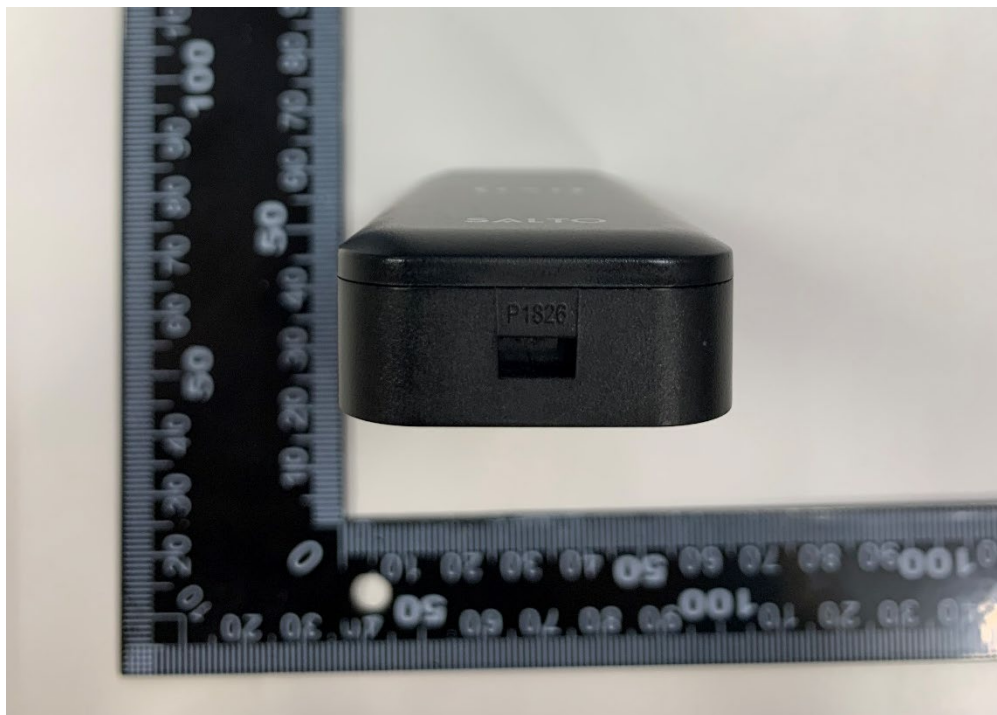
The manufacturer's name, SALTO, is marked on the front enclosure of the product. The trademark is visible to the final user.

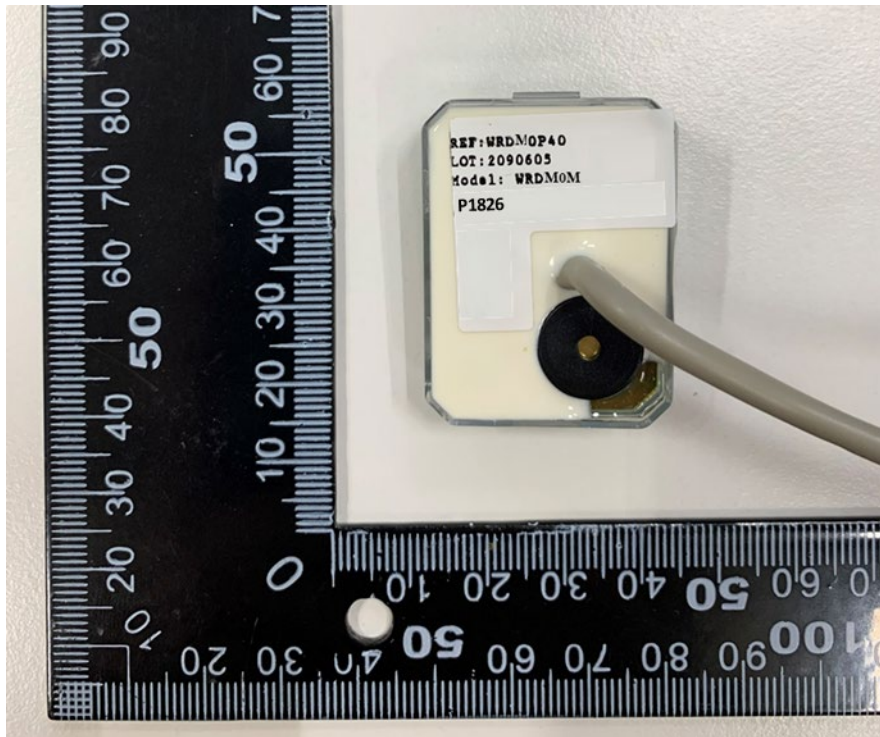


## CE type

The CE type reference of this equipment is P1826 and it is marked at the bottom of the rear plastic enclosure on the Mullion XS Reader. Glass XS Reader has the CE type marked on the label placed at the rear side of the equipment.

The CE type is visible even after installation allowing the identification of the product when it is installed as intended. This item number is also used as an identifier on the EU Declaration of Conformity. Together with the electronic model (marked on the label) is used for the traceability of the equipment.





## Label

The required information is printed on the antenna circuit and on the label placed on the rear side of the equipment.

The antenna circuit contains the following information:

