

# Installation guide

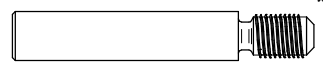
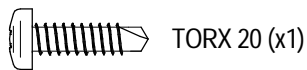
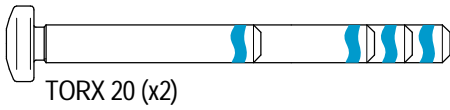
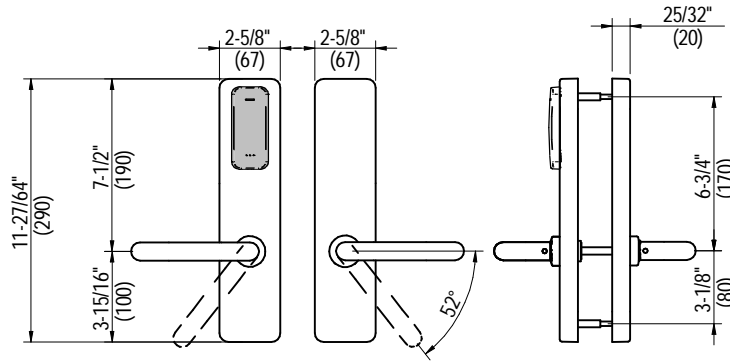
XS4 One S for USA mortise locks, cylindrical & tubular latches

**SALTO**  
inspired access

- (Eng) Installation guide
- (E) Guía de instalación
- (D) Montageanleitung
- (F) Guide d'installation
- (I) Guida all'installazione
- (P) Guia de instalação

Ai 950 xx series

Model: W61M



Mortise Lock not included  
Cerradura de embutir no incluida

(Eng) \* Required only for doors that exceed 60mm [2-3/8"] thickness

(E) \* Sólo para puertas de espesor mayor de 60mm [2-3/8"]

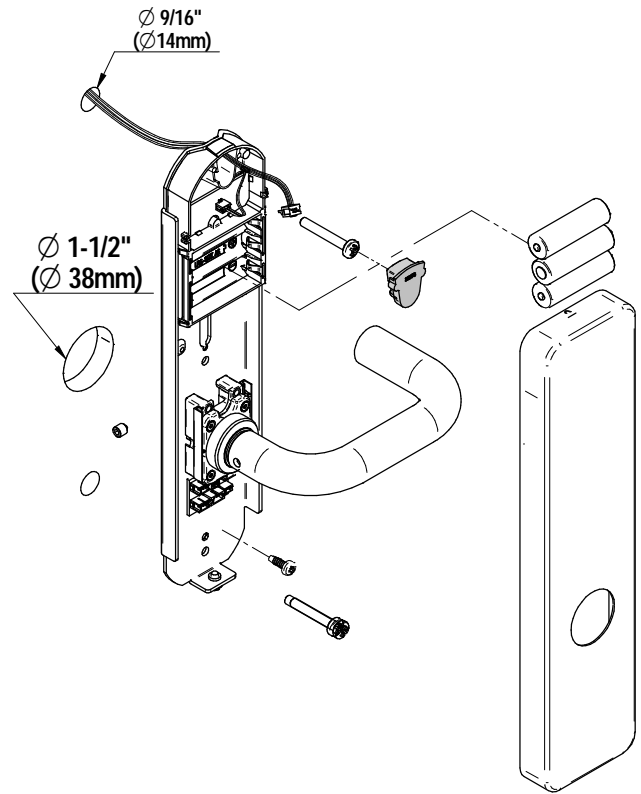
"A2" version has to be installed always with the SALTO LT2L tubular latch.  
La versión "A2" solo se puede instalar con el picaporte tubular SALTO LT2L.

SALTO LT2Lxx  
Tubular Latch

Outside  
Exterior

Inside  
Interior

SALTO recommends the use of a mortise lock, with a maximum 4° pre-turn.  
SALTO recommande d'utiliser des serrures à mortaiser avec un angle au repos de 4° maximum.  
SALTO recomienda utilizar cerraduras con un pregiro máximo de 4°.



**SALTO LT2Lxx Tubular latch**  
With Ai6xxA2.. Only!

To be used only with SALTO compatible escutcheons!  
A utiliser uniquement avec les ensembles plaques-béquilles SALTO compatibles!  
¡Utilizar solamente con escudos SALTO compatibles!

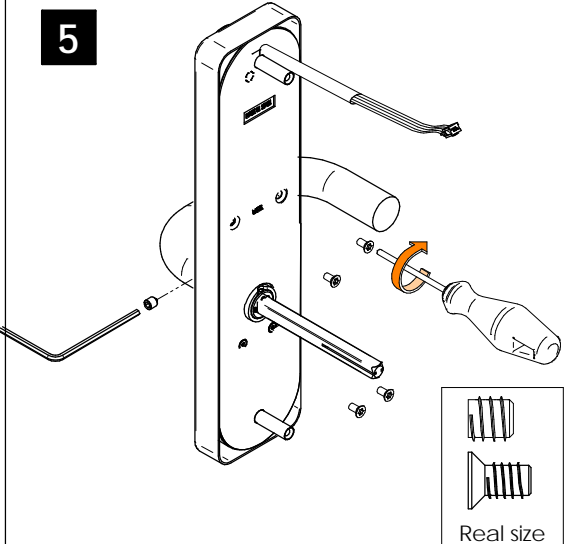
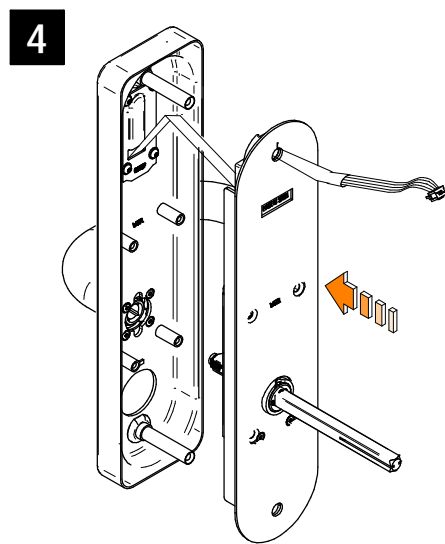
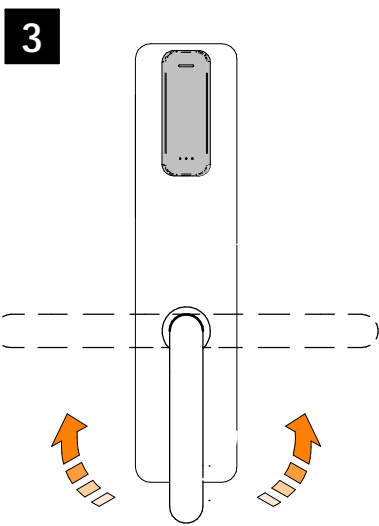
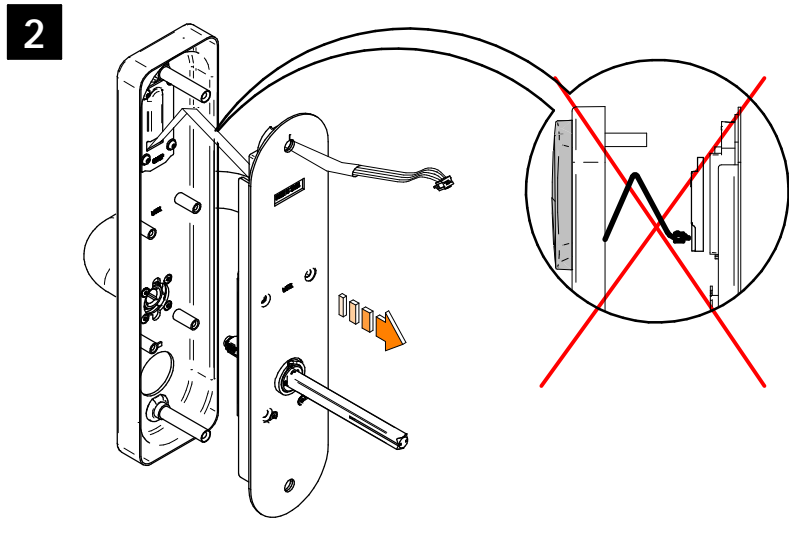
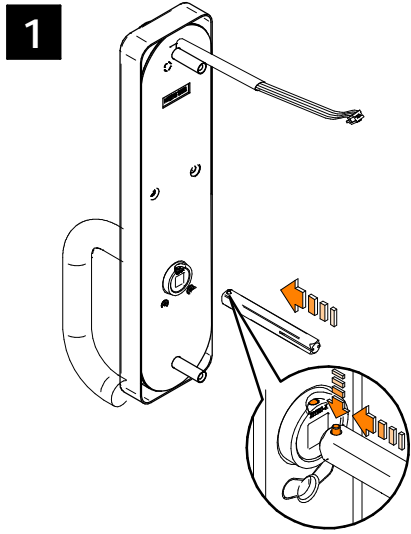
Ø25  
Ø1"

# Installation guide

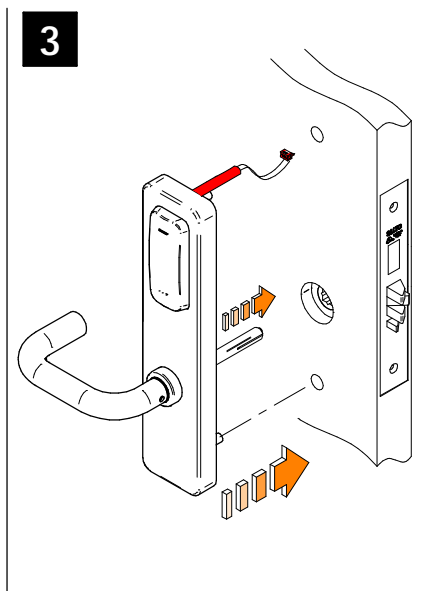
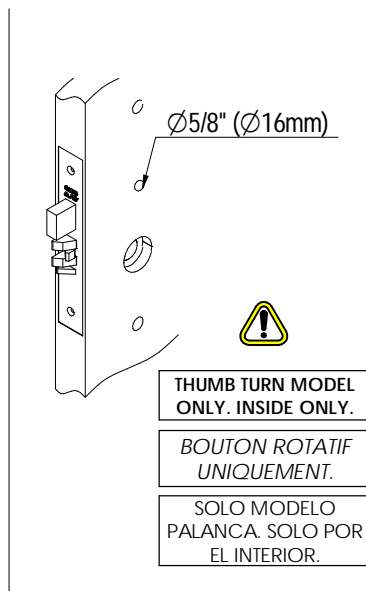
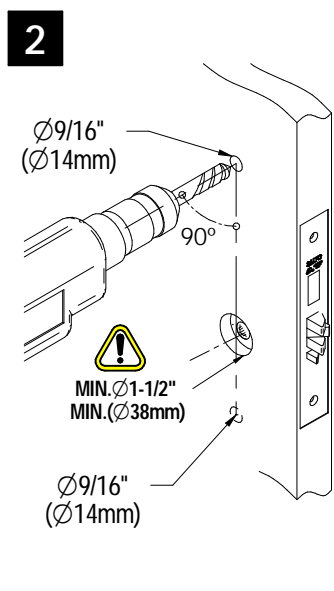
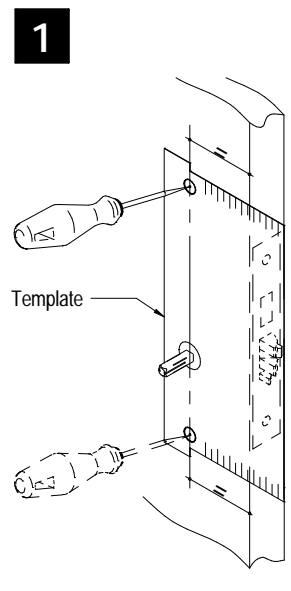
XS4 One S for USA mortise locks, cylindrical & tubular latches

**SALTO**  
inspired access

(Eng) Select handing (E) Selección mano (D) Drückerrichtung wählen (F) Choisir le sens de la bêche  
(I) Scegliere il verso (P) Seleccione mão



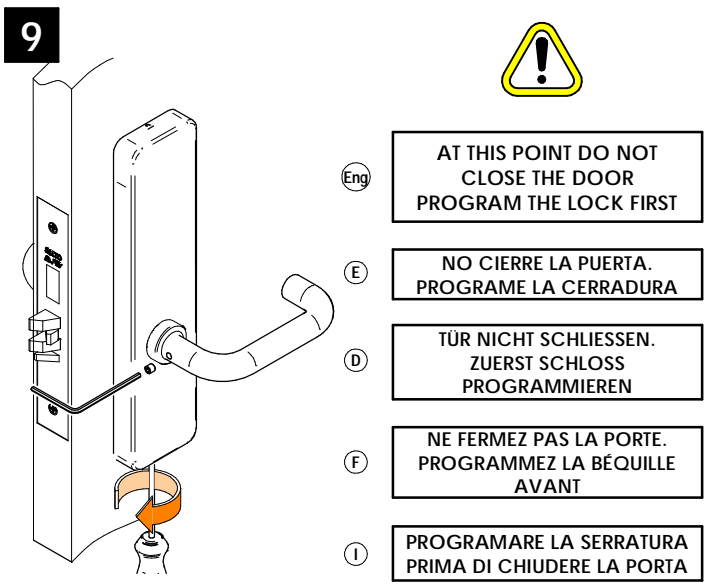
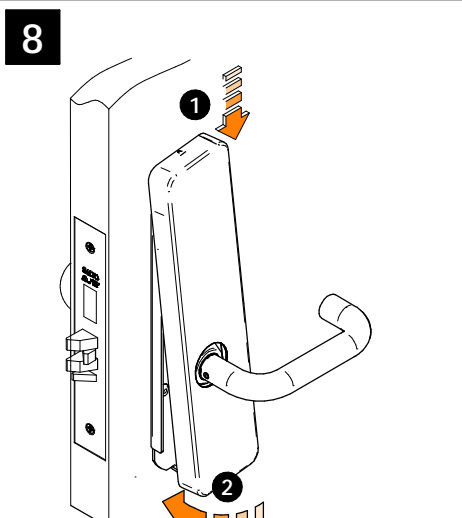
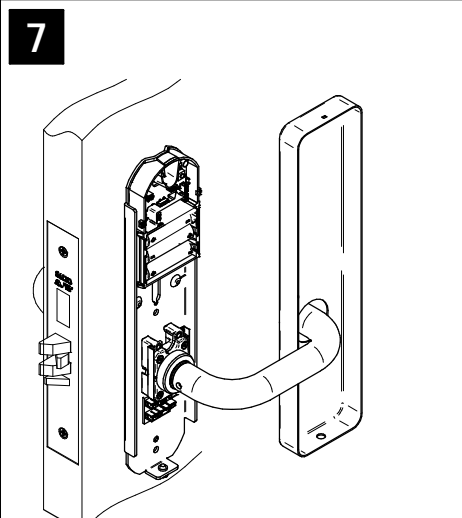
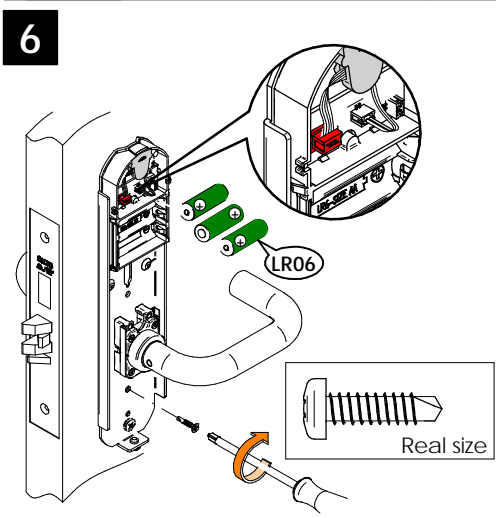
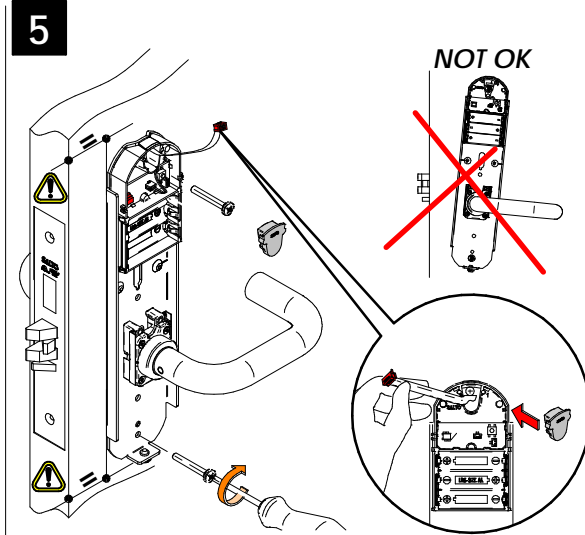
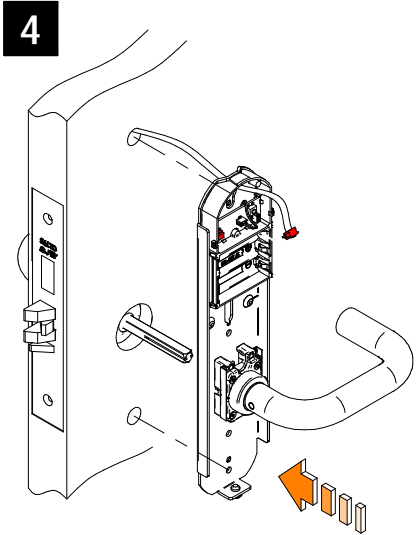
(Eng) Installation (E) Instalación (D) Installation (F) Installation (I) Installazione (P) Instalação



# Installation guide

XS4 One S for USA mortise locks, cylindrical & tubular latches

**SALTO**  
inspiredaccess



**Battery change**

(Eng) Battery change  
(F) Remplacer les piles  
(E) Cambio de pilas

**LR06**

MAX. 40"

Change/Remplacer/Cambio

# Installation guide

XS4 One S for USA mortise locks, cylindrical & tubular latches

**SALTO**  
inspiredaccess

