

XS4 Original+ and XS4 One S

E2131

W60M

Antennas

Version	Date	Changes	Author
1.0	15/09/2021	First edition	M.U.
2.0	30/05/2023	Inclusion of the XS4 One S Keypad model. Electronic model W61MK. Update of control and motor circuit of W40M, W60M and W80M.	M.U.
3.0	19/03/2024	Update of control and motor circuit W40M, W60M and W80M	M.U.
4.0	22/04/2024	Update docs as per FCC ID	A.U.

Table of contents

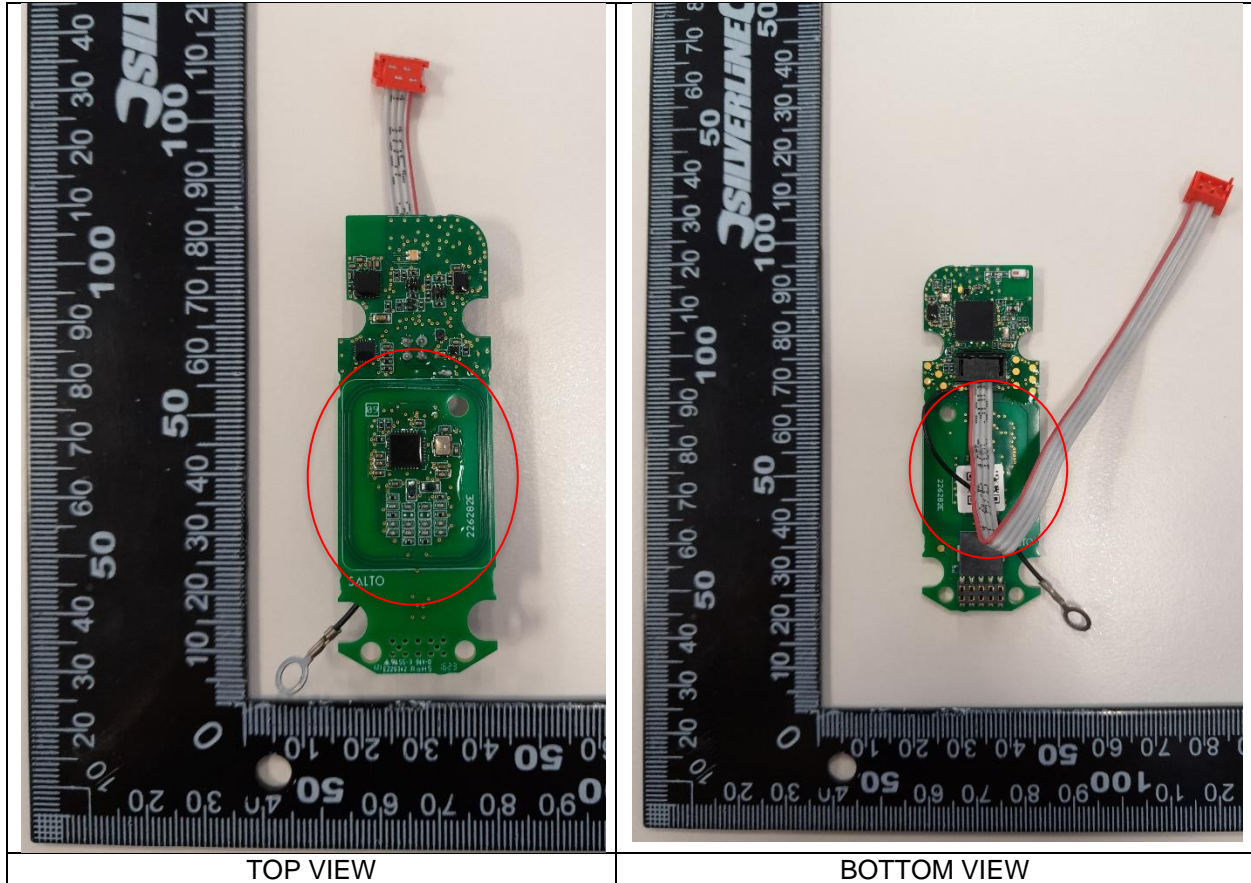
1	W60M	3
	RFID Antenna	3
	Bluetooth LE Antenna	4
Annex I	6

1 W60M

XS4 Original+ and XS4 One S E2131		W60M
		MIFARE (1) + Bluetooth LE SoC (2)
Antennas	Number of antennas	2
	Manufacturer	1- SALTO Systems, S.L. 2- N\A
	Model number	1- W40M 2- N\A
	Type	1- Integral, PCB 2- Integral, Chip
	Gain	1- N\A 2- 0.5 dBi
	Frequency of Operation	1- 13.553 - 13.567 MHz 2- 2400 - 2483.5 MHz
Channels	Number of channels	1- N\A 2- 40
	Spacing	1- N\A 2- 2 MHz
	Bandwith	1- N\A 2- 1 MHz at 1Mbps
Type of Modulation		1- <u>ISO 14443A</u> : reader to card ASK 100%, card to reader OOK (subcarrier $f_c/16$) & <u>ISO 15693</u> : reader to card ASK 100%, card to reader OOK (subcarrier $f_c/32$) 2- GFSK
Declared Nominal Output Power (Max.)		1- 25 dBm 2- 6 dBm
ITU Emission Designator		1- K1D 2- F1D
Equipment Configuration for frequency Stability: Data Rate		1- <u>ISO 14443A</u> : 106 Kbit/s & <u>ISO 15693</u> : 26.48 Kbit/s 2- 1 Mbit/s
Equipment Configuration for Field Strenght Measurement: Data Rate		1- <u>ISO 14443A</u> : 106 Kbit/s & <u>ISO 15693</u> : 26.48 Kbit/s 2- 1 Mbit/s

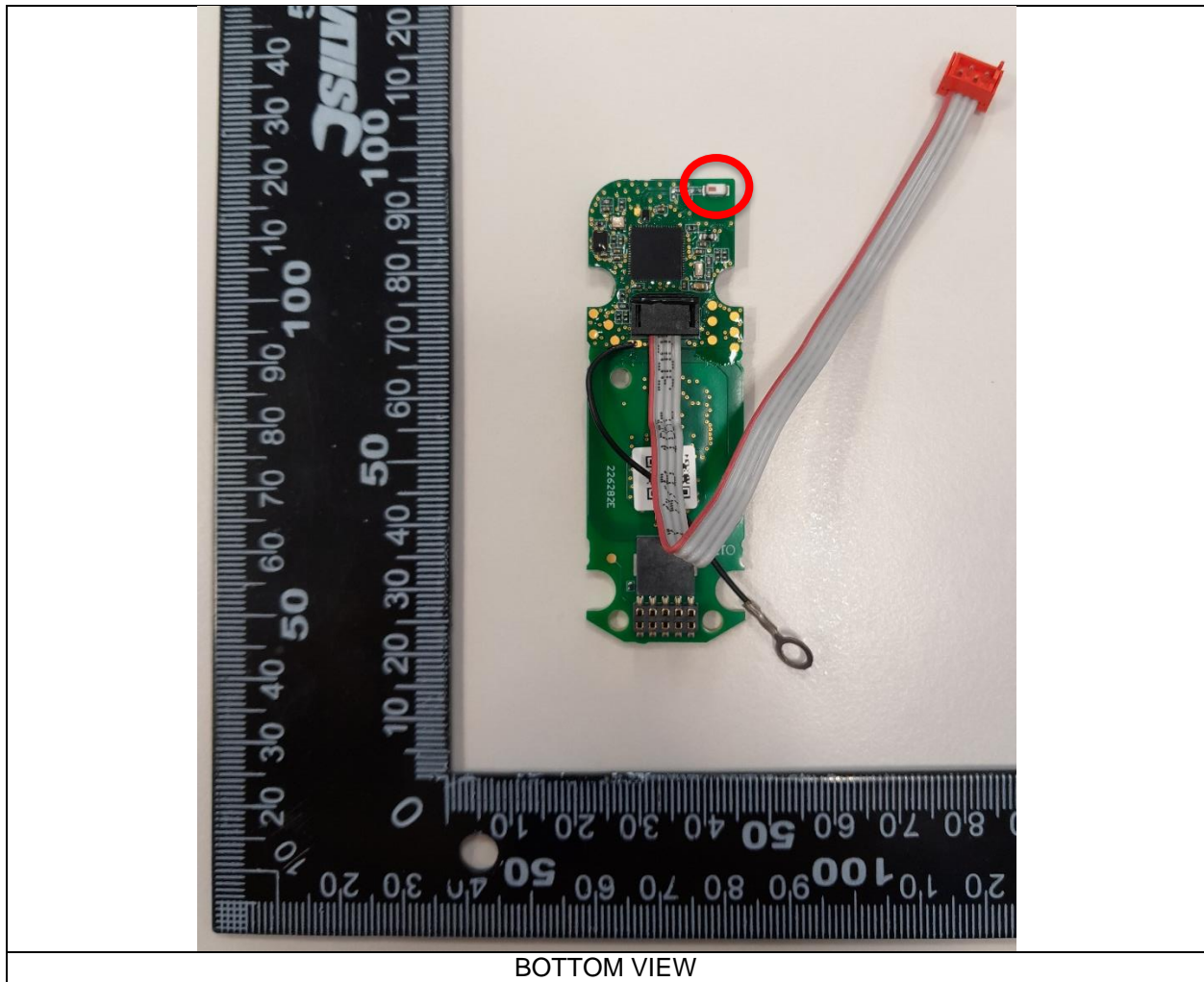
RFID Antenna

The RFID antenna was designed by Salto Systems, S.L. at Arkotz 9, Pol. Lanbarren 20180 Oiartzun (Gipuzkoa), Spain. The antenna model is W40M and it is located on the control circuit, 226282. The dimensions of the circuit and the antenna are shown in the following pictures.



Bluetooth LE Antenna

The Bluetooth LE antenna is the 2450AT18B100 model form Johanson Technology. The antenna is located on the bottom side of the control circuit, 226282. The following image shows the location of the antenna on the control circuit.



The remaining technical information of the antenna is described in the data sheet attached in Annex I.

Annex I

"High Frequency Ceramic Solutions"

2450 MHz Antenna **P/N 2450AT18B100**
 Detail Specification: 08/10/09 Page 1 of 3

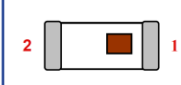
General Specifications

Part Number	2450AT18B100	Input Power	3W max.
Frequency Range	2400 - 2500 Mhz	Impedance	50 Ω
Peak Gain	0.5 dBi typ. (XZ-V)	Operating Temperature	-40 to +85°C
Average Gain	-0.5 dBi typ. (XZ-V)	Reel Quantity	3,000
Return Loss	9.5 dB min.		

P/N	Packaging Style	Bulk	Suffix = S	Eg. 2450AT18B100S
		T & R	Suffix = E	Eg. 2450AT18B100E
Suffix	Termination Style	100% Tin	Suffix = None	Eg. 2450AT18B100(E or S)
		Tin / Lead	Please consult Factory	

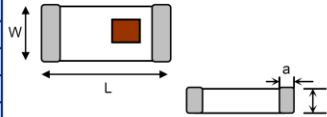
Terminal Configuration

No.	Function
1	Feeding Point
2	NC



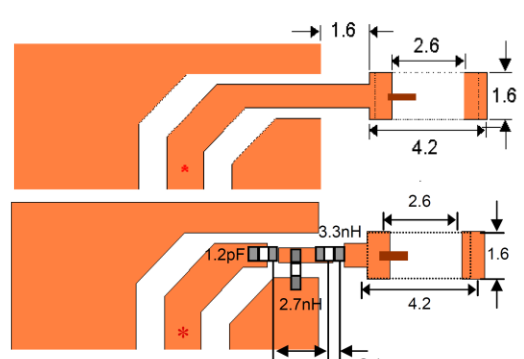
Mechanical Dimensions

	In	mm
L	0.126 ± 0.008	3.20 ± 0.20
W	0.063 ± 0.008	1.60 ± 0.20
T	0.051 +0.004/-0.008	1.30 +0.1/-0.2
a	0.020 ± 0.012	0.50 ± 0.30



Mounting Considerations

Mount these devices with brown mark facing up. Units: mm
 Line width should be designed to provide 50 Ω impedance matching characteristics.



JTI P/N for Matching Circuit:
 Cap (1.2pF): 500R07S1R2BV4T
 Inductor (2.7nH): L-07C2N7SV6T
 Inductor (3.3nH): L-07C3N3SV6T

Johanson Technology, Inc. reserves the right to make design changes without notice.
 All sales are subject to Johanson Technology, Inc. terms and conditions.



www.johansontechnology.com
 4001 Calle Tecate • Camarillo, CA 93012 • TEL 805.389.1166 FAX 805.389.1821
 2009 Johanson Technology, Inc. All Rights Reserved

"High Frequency Ceramic Solutions"

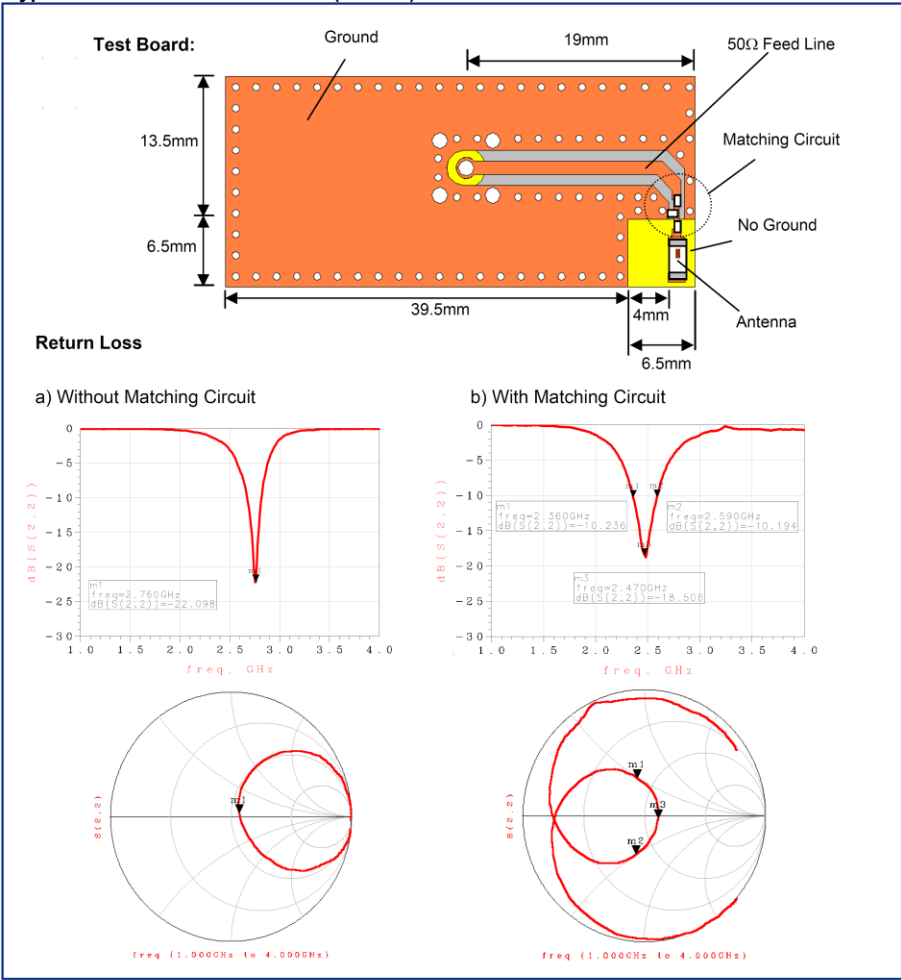
2450 MHz Antenna

P/N 2450AT18B100

Detail Specification: 08/10/09

Page 2 of 3

Typical Electrical Characteristics (T=25°C)



Johanson Technology, Inc. reserves the right to make design changes without notice.
All sales are subject to Johanson Technology, Inc. terms and conditions.



www.johansontechnology.com
4001 Calle Tecate • Camarillo, CA 93012 • TEL 805.389.1166 FAX 805.389.1821
2009 Johanson Technology, Inc. All Rights Reserved

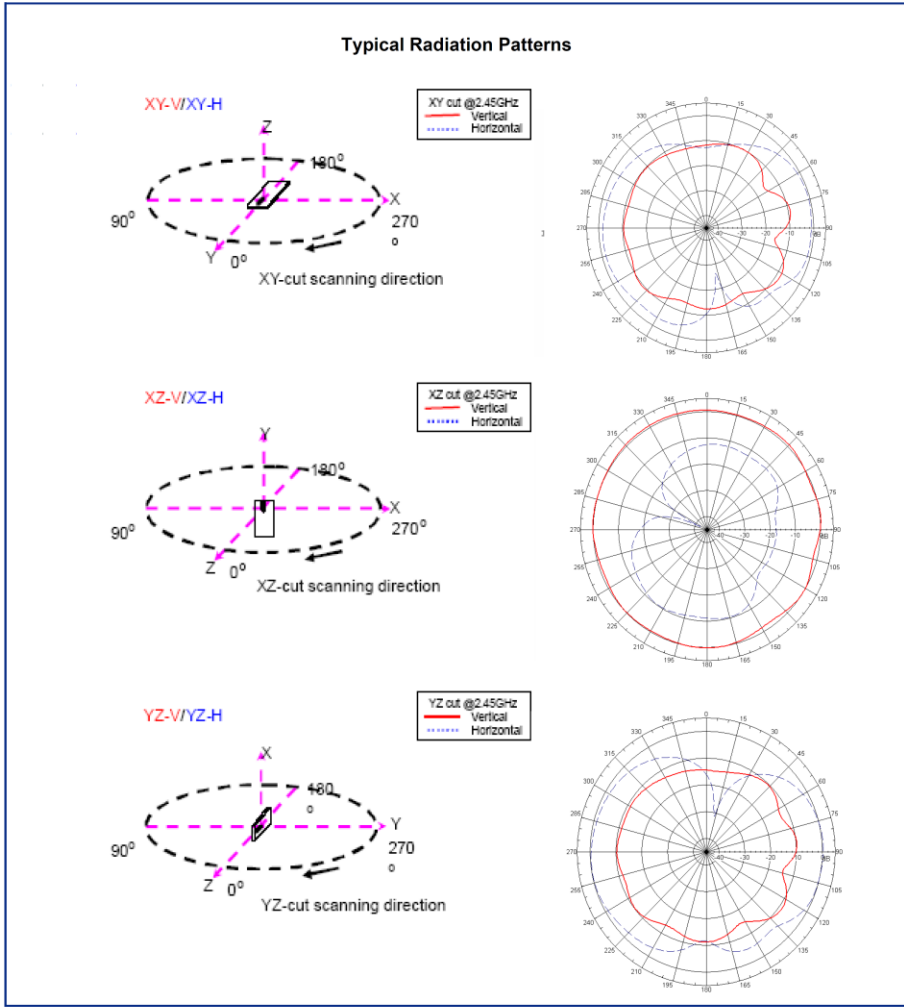
"High Frequency Ceramic Solutions"

2450 MHz Antenna

P/N 2450AT18B100

Detail Specification: 08/10/09

Page 3 of 3



Johanson Technology, Inc. reserves the right to make design changes without notice.
All sales are subject to Johanson Technology, Inc. terms and conditions.



www.johansontechnology.com
4001 Calle Tecate • Camarillo, CA 93012 • TEL 805.389.1166 FAX 805.389.1821
2009 Johanson Technology, Inc. All Rights Reserved