

XS4 Original+ and XS4 One S KPP and Hilton extensions

E2131 W40MH and W40T

Product marking

Version	Date	Changes	Author
1.0	17/10/2023	First edition	U.T.

Table of contents

1	W40MH	3
	Trademark	3
	CE type	4
	Label	4
2	W40T	5
	Trademark	5
	CE type	6
	Label	6

This equipment contains several markings to ensure traceability and fulfilment of the marking requirements established by international regulations.

In this product, the marking information is divided into three categories: trademark, CE type and label. The information contained slightly varies for each electronic model.

1 W40MH

Trademark

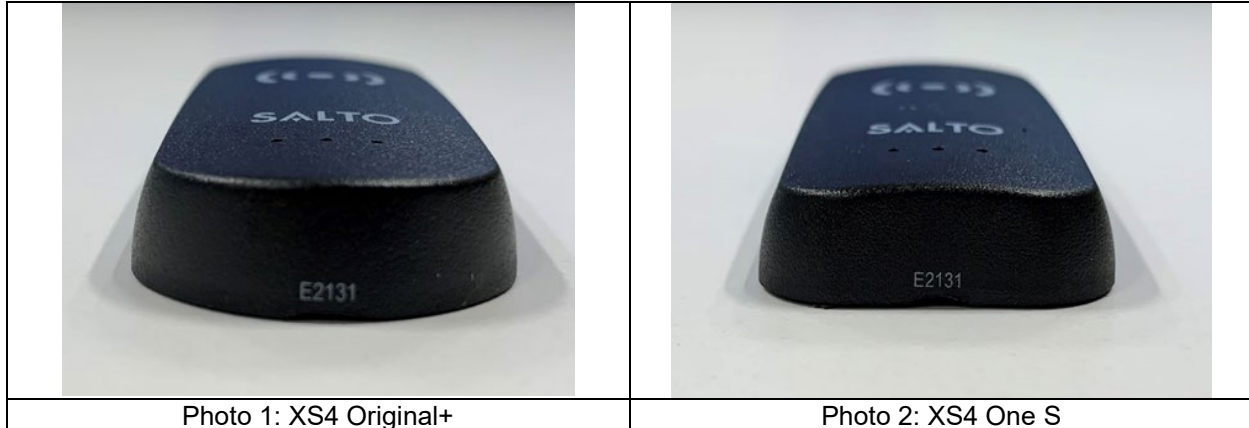
The manufacturer name, SALTO, is marked on the reader case. The trademark is visible to the final user.



CE type

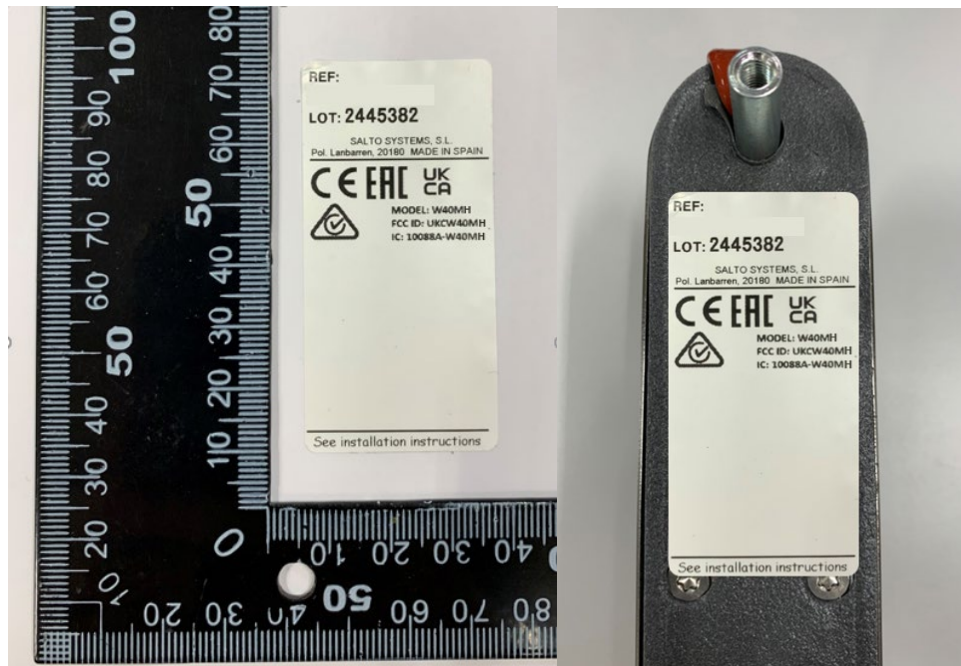
The CE type reference of this equipment is E2131 and it is marked on the bottom of the reader enclosure.

The CE type is common for all electronic models of this product family. It is visible even after installation allowing the identification of the product when it is installed as intended. This item number is also used as an identifier on the EU Declaration of Conformity. Together with the electronic model (marked on the label) is used for the traceability of the equipment.



Label

The label is located on the rear side of the external part of the lock. The label contains the following information:



2 W40T

Trademark

The manufacturer name, SALTO, is marked on the reader case. The trademark is visible to the final user.



CE type

The CE type reference of this equipment is E2131 and it is marked on the bottom of the reader enclosure.

The CE type is common for all electronic models of this product family. It is visible even after installation allowing the identification of the product when it is installed as intended. This item number is also used as an identifier on the EU Declaration of Conformity. Together with the electronic model (marked on the label) is used for the traceability of the equipment.

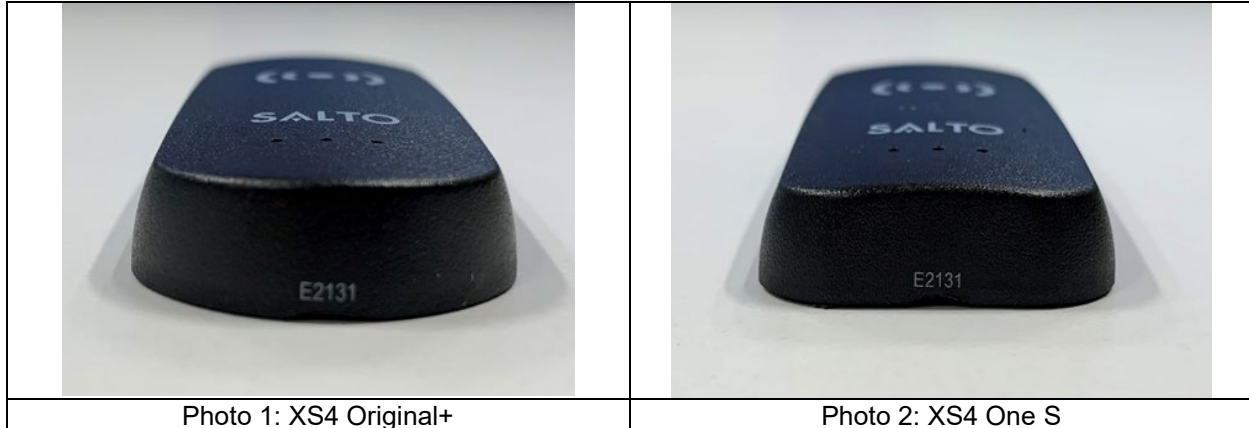


Photo 1: XS4 Original+

Photo 2: XS4 One S

Label

The label is located on the rear side of the external part of the lock. The label contains the following information:

