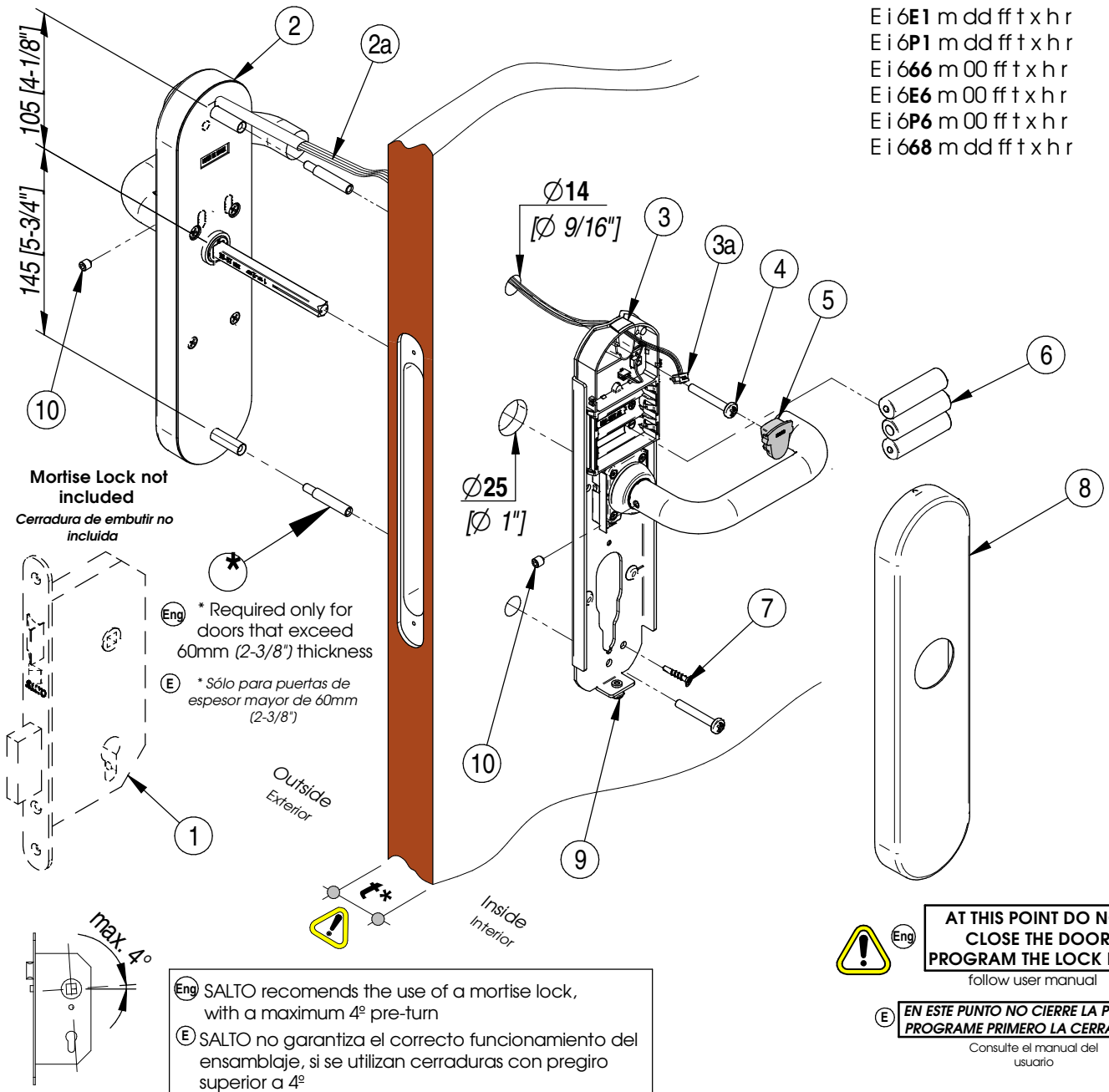
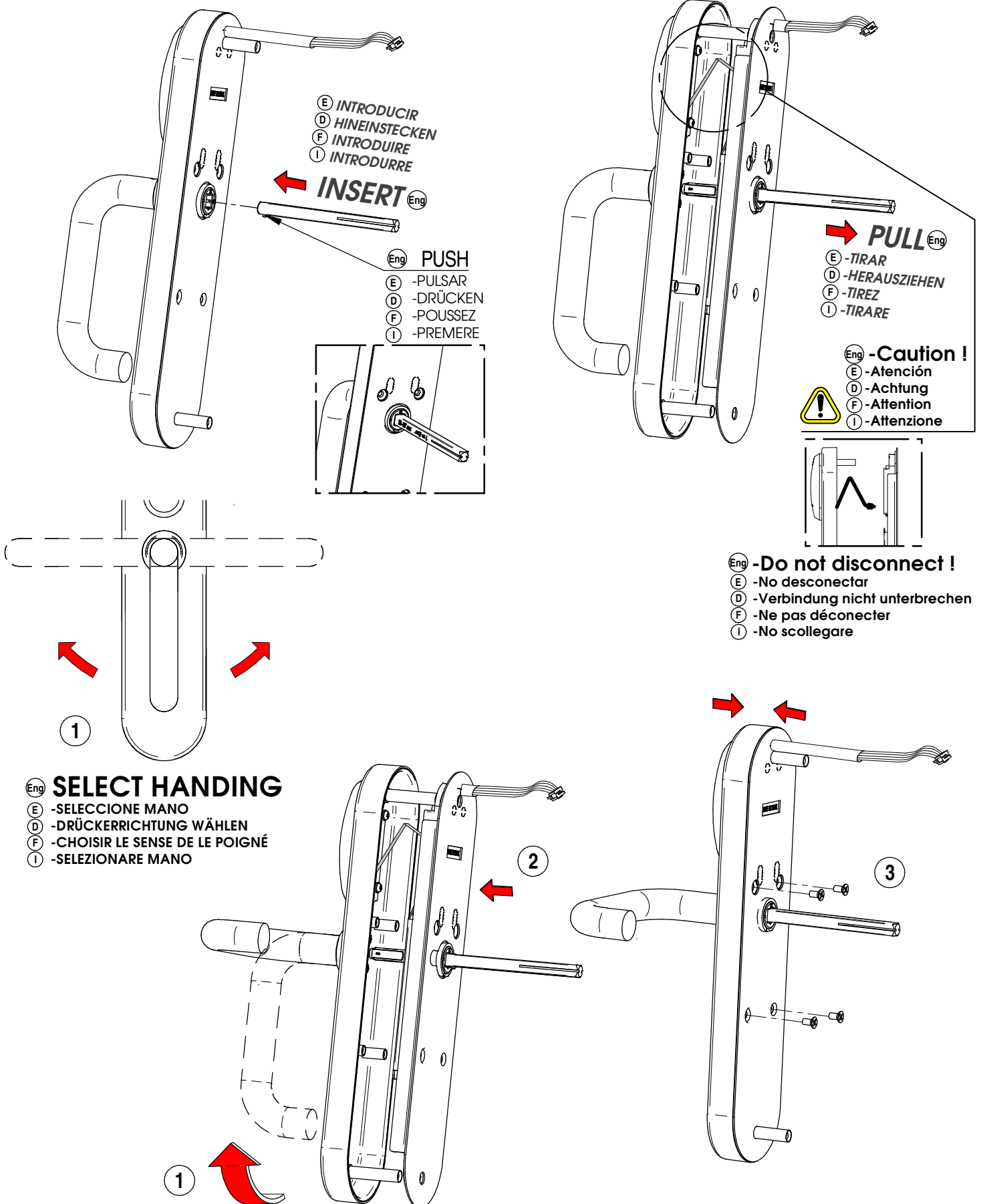


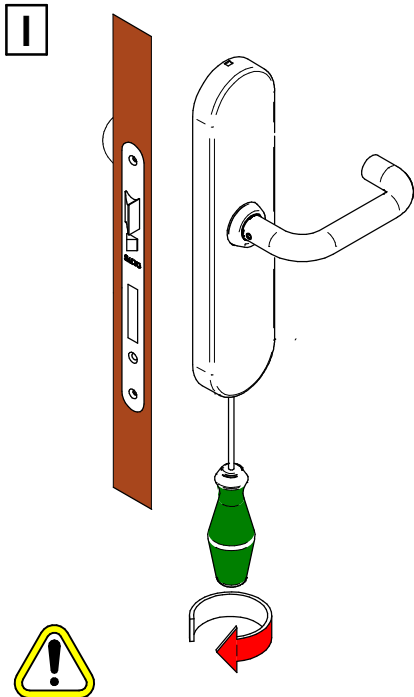
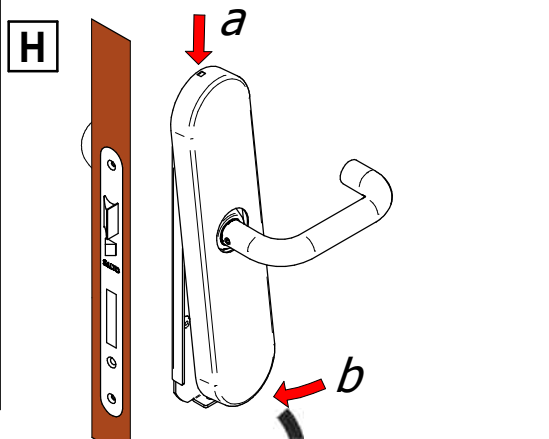
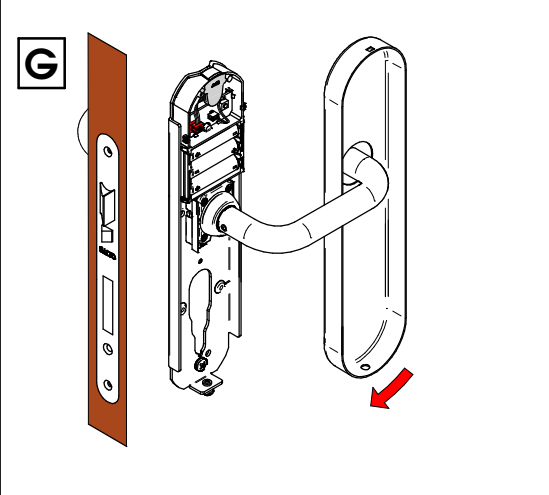
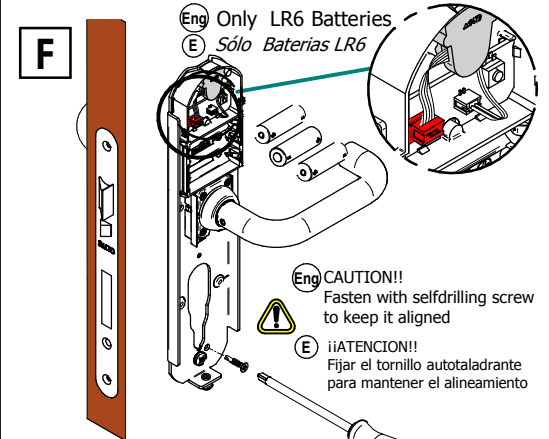
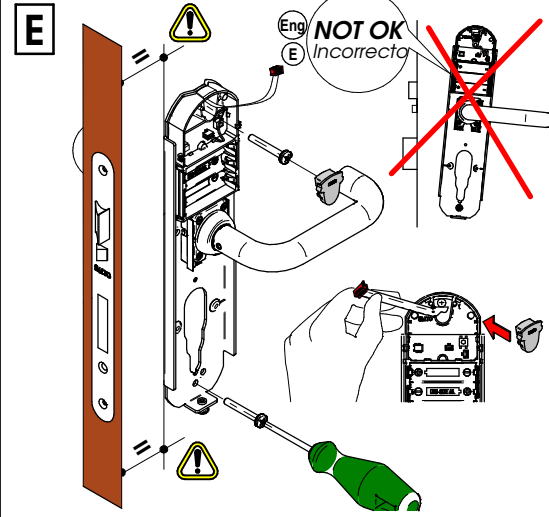
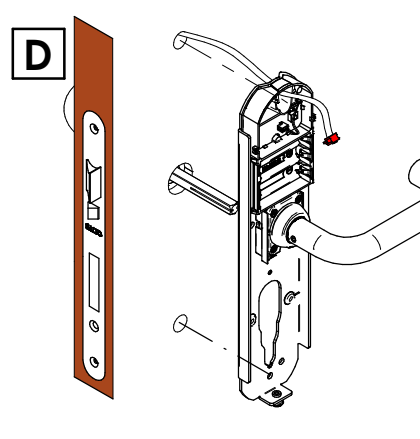
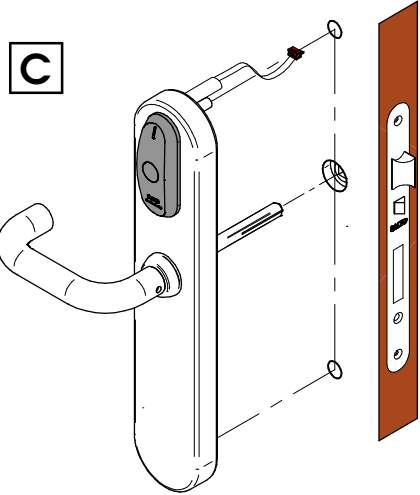
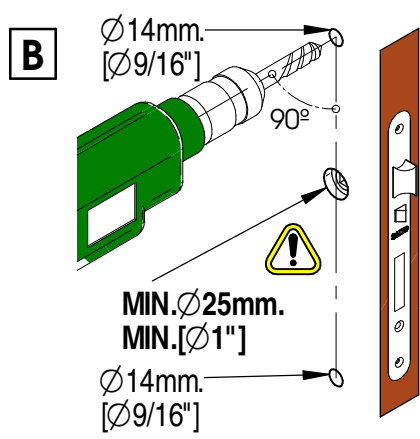
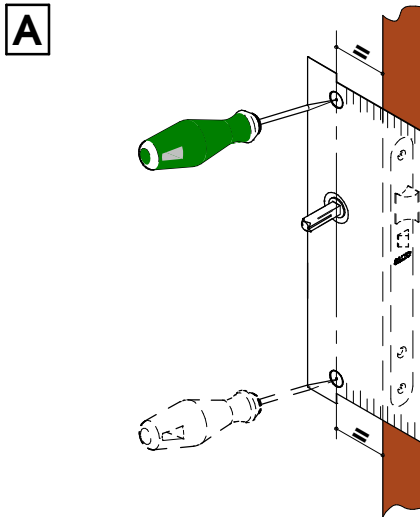
# Installation guide Ei6xx...

- Ⓔ Installation guide
- Ⓔ Guía de instalación
- Ⓔ Montageanleitung
- Ⓔ Guide d'installation
- Ⓔ Guida all'installazione

- Ei 650 m 00 ff t x h r series
- Ei 651 m dd ff t x h r
- Ei 652 m dd ff t x h r
- Ei 653 m dd ff t x h r
- Ei 654 m dd ff t x h r
- Ei 656 m 00 ff t x h r
- Ei 657 m dd ff t x h r
- Ei 658 m 00 ff t x h r
- Ei 660 m 00 ff t x h r
- Ei 6E0 m dd ff t x h r
- Ei 6P0 m 00 ff t x h r
- Ei 661 m dd ff t x h r
- Ei 6E1 m dd ff t x h r
- Ei 6P1 m dd ff t x h r
- Ei 666 m 00 ff t x h r
- Ei 6E6 m 00 ff t x h r
- Ei 6P6 m 00 ff t x h r
- Ei 668 m dd ff t x h r







**Reverse !**

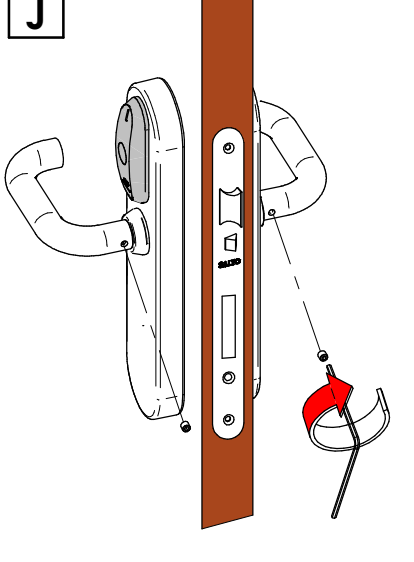
Eng -TO FIX COUNTER-CLOCKWISE

E -FIJACION: GIRAR SENTIDO ANTIHORARIO

D -GEGEN UHRZEIGERSINN FESTSCHRAUBEN

F -POUR FIXER, TOURNEZ EN SENS INVERSE DES AIGUILLES D'UNE MONTRE

I -FISSAGGIO: GIRARE SENSO ANTIORARIO



Eng **AT THIS POINT DO NOT CLOSE THE DOOR PROGRAM THE LOCK FIRST**

E NO CIERRE LA PUERTA. programe la cerradura

D TÜRE NICHT SCHLIESSEN. ZUERST SCHLOSS PROGRAMMIEREN

F NE FERMEZ PAS LA PORTE. PROGRAMMEZ LA BÉQUILLE AVANT

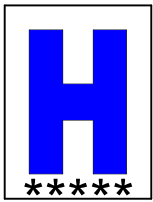
I PRIMA DI CHIUDERE LA PORTA, PROGRAMARE LA SERRATURA

Eng follow user manual

E Consulte el manual del usuario

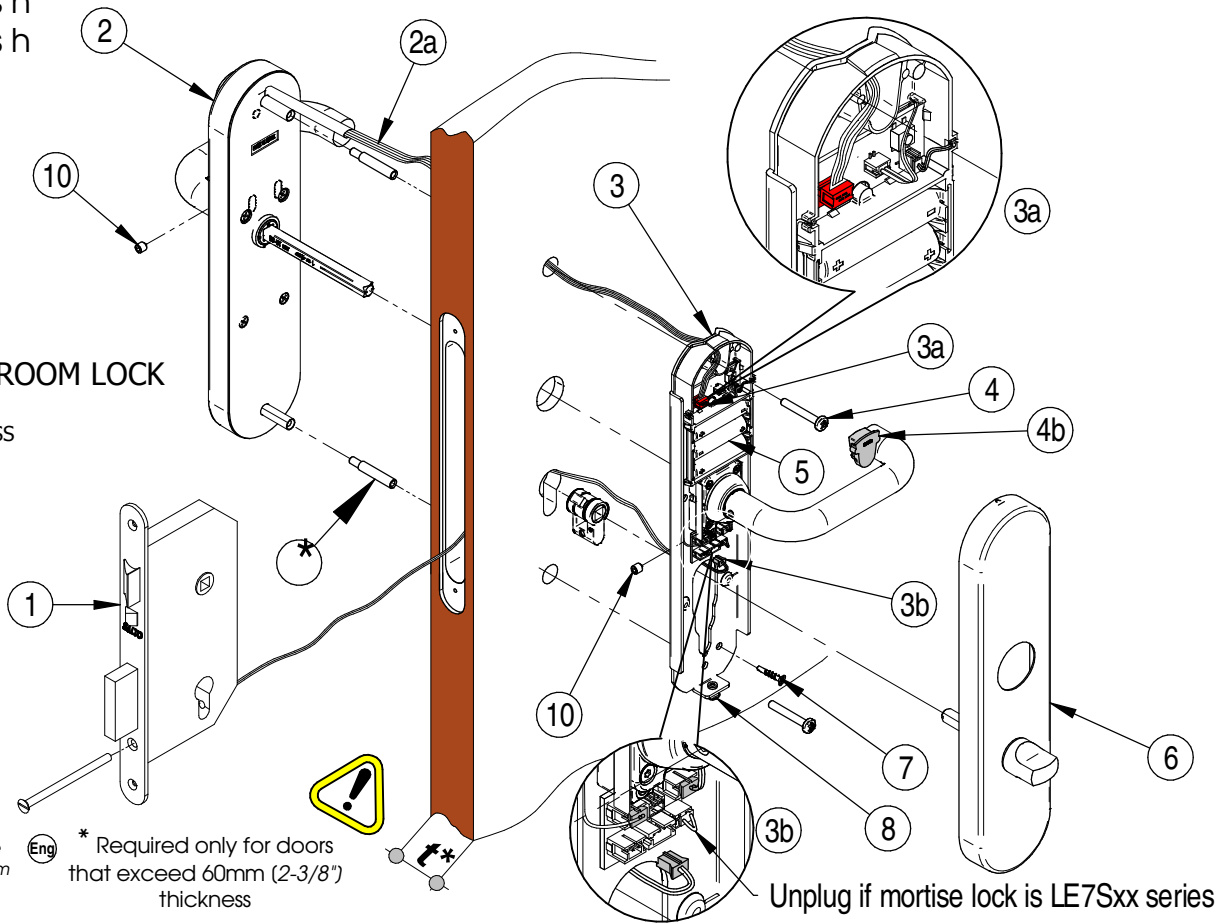
# Installation guide Ei6xx...

Ei651 m dd ff t s h  
Ei661 m dd ff t s h



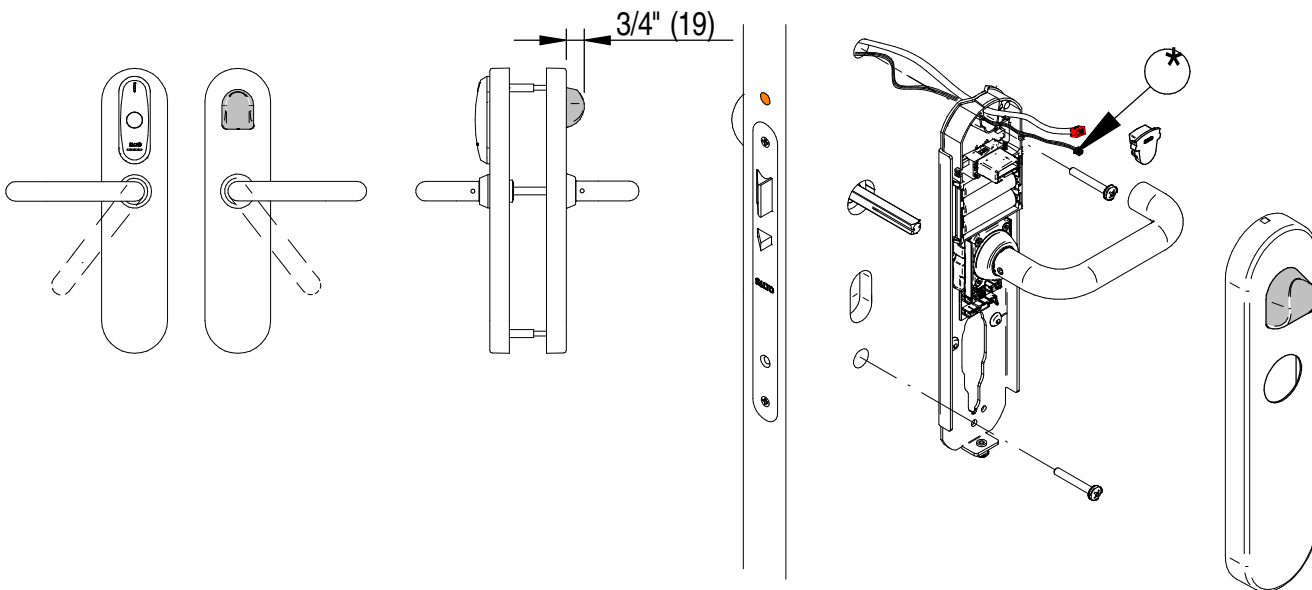
**Eng** HOTEL GUEST ROOM LOCK

- E** HABITACION HOTEL
- D** HOTELZIMMERSCHLOSS
- F** PIÈCE D'HÔTEL
- I** CAMERE HOTEL



## WIRELESS with external door detector

Ei6xx m 00 ff t x h W series



**Eng** \* Door detector for Ai6xx...  
Wooden doors **RFDICTW18W01**  
Steel doors **RFDICTS18W01**  
See installation instruction 220446 or 220449

**E** \* Detector de puerta para Ai6xx...  
Puertas de madera **RFDICTW18W01**  
Puertas metálicas **RFDICTS18W01**  
Ver hoja de instalación 220446 ó 220449

## PRODUCTS DESCRIPTION

PRODUCT		TECHNOLOGY			SOFTWARE			
COMMERCIAL NAME	MODEL	RFID	BLUETOOTH SMART	IEEE802.15.4	CONTROL	READER	BLUETOOTH MODULE(S)	RF2 MODULE
XS4 Original E0102	W09	x			0037	0132		
	W0B	x	x		0037	0132	0136	
	W0J	x	x		0037	0133	0136	
	W0S	x	x		0126	0132	-	
	W09W	x		x	0016	0132		0038
	W0BW	x	x	x	0016	0132	0136	0038
	W0JW	x	x	x	0016	0133	0136	0038
XS4 Original with Keypad E1215	W0BK	x	x		0016	0132	0136	
	W0JK	x	x		0016	0133	0136	
	W0SK	x	x		0126	0132	-	
	W0BWK	x	x	x	0016	0132	0136	0038
	W0JWK	x	x	x	0016	0133	0136	0038

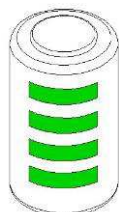
## EU COMPLIANCE STATEMENT

- EN Hereby, SALTO Systems S.L. (Arkotz Kalea (Pol. Lanbarren), 9 – 20180 Oiartzun– Spain), declares that this access control equipment is in compliance with the essential requirements and other relevant provisions of Directive 2014/53/EU (RED) and 2011/65/EU (RoHS). You will be able to find a copy of the original declaration of conformity at the following Internet address: <http://www.saltosystems.com/certificate>
- ES Por medio de la presente SALTO Systems S.L. (Arkotz Kalea (Pol. Lanbarren), 9 – 20180 Oiartzun– Spain) declara que este equipo de control de accesos cumple con los requisitos esenciales y cualesquiera otras disposiciones aplicables o exigibles de la Directiva 2014/53/UE (RED) y 2011/65/UE (RoHS). Podrá encontrar una copia de la declaración de conformidad original en la siguiente dirección de internet: <http://www.saltosystems.com/certificate>
- FR Par la présente SALTO Systems S.L. (Arkotz Kalea (Pol. Lanbarren), 9 – 20180 Oiartzun– Spain) déclare que l'appareil équipement pour le contrôle d'accès est conforme aux exigences essentielles et aux autres dispositions pertinentes de la directive 2014/53/UE (RED) et 2011/65/UE (RoHS). Vous pouvez télécharger une copie de la déclaration de conformité originale à travers l'adresse suivante: <http://www.saltosystems.com/certificate>
- DE Hiermit erklärt SALTO Systems S.L. (Arkotz Kalea (Pol. Lanbarren), 9-20180 Oiartzun-Spain) dass sich das Gerät Zutrittskontrollgeräte im Übereinstimmung mit den grundlegenden Anforderungen und den übrigen einschlägigen Bestimmungen der Richtlinie 2014/53/EU (RED) befindet und 2011/65/EU (RoHS). Eine Kopie der originalen Konformitätserklärung finden Sie auf der folgenden Internetseite: <http://www.saltosystems.com/certificate>
- NL Hierbij verklaart SALTO Systems S.L. (Arkotz Kalea (Pol. Lanbarren), 9 – 20180 Oiartzun– Spain) dat het toestel toegangscontroleapparatuur in overeenstemming is met de essentiële eisen en de andere relevante bepalingen van richtlijn 2014/53/EU (RED) en 2011/65/EU (RoHS). U kunt een kopie van de originele verklaring van overeenstemming vinden op het volgende internetadres: <http://www.saltosystems.com/certificate>
- PT A SALTO Systems S.L. declara que este equipamento de controlo de accesos está conforme os requisitos essenciais e outras disposições da Diretiva 2014/53/UE (RED) e 2011/65/EU (RoHS). Poderá encontrar uma cópia da declaração de conformidade original na seguinte direção de internet: <http://www.saltosystems.com/certificate>

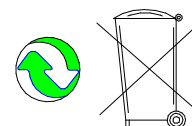
## ELECTRICAL WARNINGS

**Caution:** Risk of explosion if battery is replaced by an incorrect type. Dispose of used batteries according to the instructions.

**Recommended batteries:**



- Duracell Plus Power **AAA** (MN2400)
- Duracell Ultra Power **AAA** (MX2400)
- Varta Industrial **AAA** (04003)
- Varta High Energy **AAA** (04903)
- Varta Max Tech **AAA** (MN2400)
- Duracell Plus Power **AA** (MN1500)
- Duracell Ultra Power **AAA** (MX1500)
- Varta Industrial **AA** (04006)
- Varta High Energy **AA** (04906)
- Varta Max Tech **AA** (MN1500)
- Duracell Ultra **CR2** Lithium (DLCR2)
- Panasonic **CR2** Lithium
- Panasonic **CR2** Lithium Industrial



## FREQUENCY / OUTPUT MAXIMUM POWER

TECHNOLOGY	OPERATING FREQUENCY	OUTPUT MAX. POWER
RFID	13.56 MHz	+25 dBm
Bluetooth Smart	2400 – 2483.5 MHz	+8 dBm / + 2.8 dBm
IEEE802.15.4	2400 – 2483.5 MHz	+5 dBm

## MECHANICAL WARNINGS

In order to confirm the correct operation of this electronic device, SALTO recommends using it in combination with a lock destined for that use (door mass, frequency of use, fire door, etc) and that is in good operational conditions. The SALTO product should be treated with care during the installation process to avoid any aggressive contact that may damage the unit. It may be necessary to loosen the trims mounting during installation. Do not bring the device into contact with oil, paints or acids. Do not paint the door with the mortise lock or electronic device already mounted on the door. CLEANING THE ELECTRONIC DEVICE: a damp cloth with mild soapy water can be used. Never use abrasive soaps or sprays. For best performance, stainless steel should be cleaned regularly. Note that when the door is closed without the lock having been already programmed, the lock will automatically lock and can only be opened with a Portable Programming Device (PPD). If you have questions or doubts on this, please contact your authorized SALTO supplier.

## LEGAL WARNINGS

The user shall be responsible for the correct use and maintenance of the access control equipment according to the instructions herein. SALTO shall not be responsible for any defect, malfunction, loss or damage, whether direct or indirect, caused by or arisen from any improper installation or utilization of the equipment or which contravenes, transgresses or infringes in any manner the abovementioned instructions.

SALTO's liability concerning the equipment is limited to the warranty provided. The warranty does not cover product failures due to repairs, modifications or product manipulations performed in the access control equipment or in the inner electromechanical structure by anyone other than authorized SALTO dealers or personnel.



## FCC COMPLIANCE STATEMENT

This device complies with Part 15 of the FCC Rules. Operation is subject to the following two conditions: (1) this device may not cause harmful interference, and (2) this device must accept any interference received, including interference that may cause undesired operation. Changes or modifications not expressly approved by the party responsible for compliance could void the user's authority to operate the equipment.

Note: This equipment has been tested and found to comply with the limits for a Class B digital device, pursuant to part 15 of the FCC Rules. These limits are designed to provide reasonable protection against harmful interference in a residential installation. This equipment generates, uses, and can radiate radio frequency energy and, if not installed and used in accordance with the instructions may cause harmful interference to radio communications. However, there is no guarantee that interference will not occur in a particular installation. If this equipment does cause harmful interference to radio or television reception, which can be determined by turning the equipment off and on, the user is encouraged to try to correct the interference by one or more of the following measures:

- Reorient or relocate the receiving antenna.
- Increase the separation between the equipment and receiver.
- Connect the equipment into an outlet on a circuit different from that to which the receiver is connected.
- Consult the dealer or an experienced radio/TV technician for help.

This product is designed not to exceed the emission limits for exposure to radio frequency (RF) energy set by the Federal Communications Commission. It must not be co-located or operating in conjunction with any other antenna or transmitter and it must be installed and operated with minimum distance of 20 cm between the radiator and your body.

## CANADIAN COMPLIANCE STATEMENT

This device complies with Industry Canada license-exempt RSS standard(s). Operation is subject to the following two conditions: (1) this device may not cause harmful interference, and (2) this device must accept any interference received, including interference that may cause undesired operation. Changes or modifications not expressly approved by the party responsible for compliance could void the user's authority to operate the equipment.

Le présent appareil est conforme aux CNR d'Industrie Canada applicables aux appareils radio exempts de licence. L'exploitation est autorisée aux deux conditions suivantes: (1) l'appareil ne doit pas produire de brouillage, et (2) l'utilisateur de l'appareil doit accepter tout brouillage radioélectrique subi, même si le brouillage est susceptible d'en compromettre le fonctionnement.

This product is designed not to exceed the emission limits for exposure to radio frequency (RF) energy set by the ISED. It must not be co-located or operating in conjunction with any other antenna or transmitter and it must be installed and operated with minimum distance of 20 cm between the radiator and your body.

Ce produit est conçu pour ne pas dépasser les limites d'émission pour l'exposition à l'énergie radiofréquence (RF) établie par l'ISDE.

Il ne doit pas être colocalisé ni fonctionner conjointement avec à autre antenne ou autre émetteur et il doit être installé de façon à garder une distance minimale de 20 cm entre la source de rayonnements et votre corps.

## JAPANESE COMPLIANCE STATEMENT

注意) 本装置は、FCC規則パート15 クラスA、日本のZigbee規格及びEMC規格VCCI クラスA1に準拠しています。本装置の動作は、次の二つの条件を満たす必要があります: (1) 本装置は、有害な電波干渉を発生させない。(2) 本装置は、望ましくない動作を引き起こす可能性のある電波干渉も含め、受信したいかなる電波干渉にも耐えうるものでなければならない。注意) 本装置は、日本のVCCIクラスA1に相当するFCC規則パート15に準拠したクラスAデジタル装置の許容値に準拠しています。これらの制限は、本装置を商業地域で運用する場合に限り、電波障害に対する適切な保護措置が行われるように設計されています。本装置は電波エネルギーを発生、使用、放射し、ユーザーズマニュアルに従って設置、使用しない場合は無線装置に干渉する可能性もあります。本装置を住宅地域で使用する場合、有害な干渉を起こす可能性があり、その場合ユーザーは自身の費用負担で干渉防止対策を講じることを求められます。

RF2MODULEのユーザーマニュアルは、次のインターネットアドレスでご覧いただけます。<http://www.saltosystems.com/certificate>