

SALTO Neo

G1824

N0M, N0J

Product marking

Version	Date	Changes	Author
1.0	05/11/2021	First edition	M.U.
2.0	18/05/2022	Second edition. Modification of control circuit for N0M.	M.U.

Table of contents

1	N0M	3
	Trademark.....	3
	CE type.....	3
	Label.....	4
2	N0J	6
	Trademark.....	6
	CE type.....	6
	Label.....	7

This equipment contains several markings to ensure traceability and fulfilment of the marking requirements established by international regulations.

In this product, the marking information is divided into three categories: trademark, CE type and label. The information contained slightly varies for each electronic model.

1 NOM

Trademark

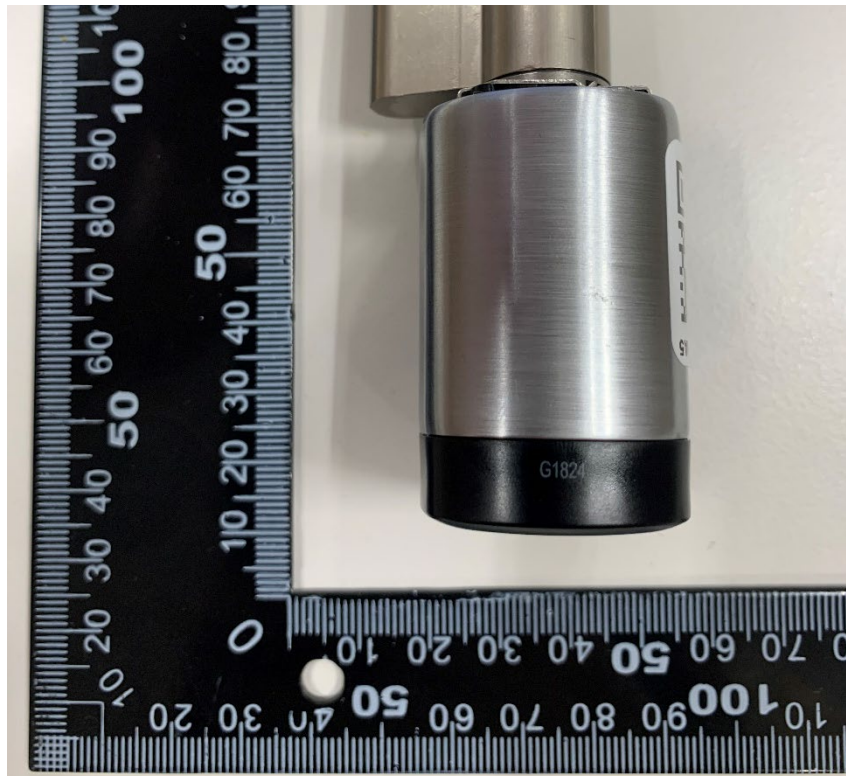
The manufacturer's name, SALTO, is marked on the front side of the cylinder. The trademark is visible to the final user.



CE type

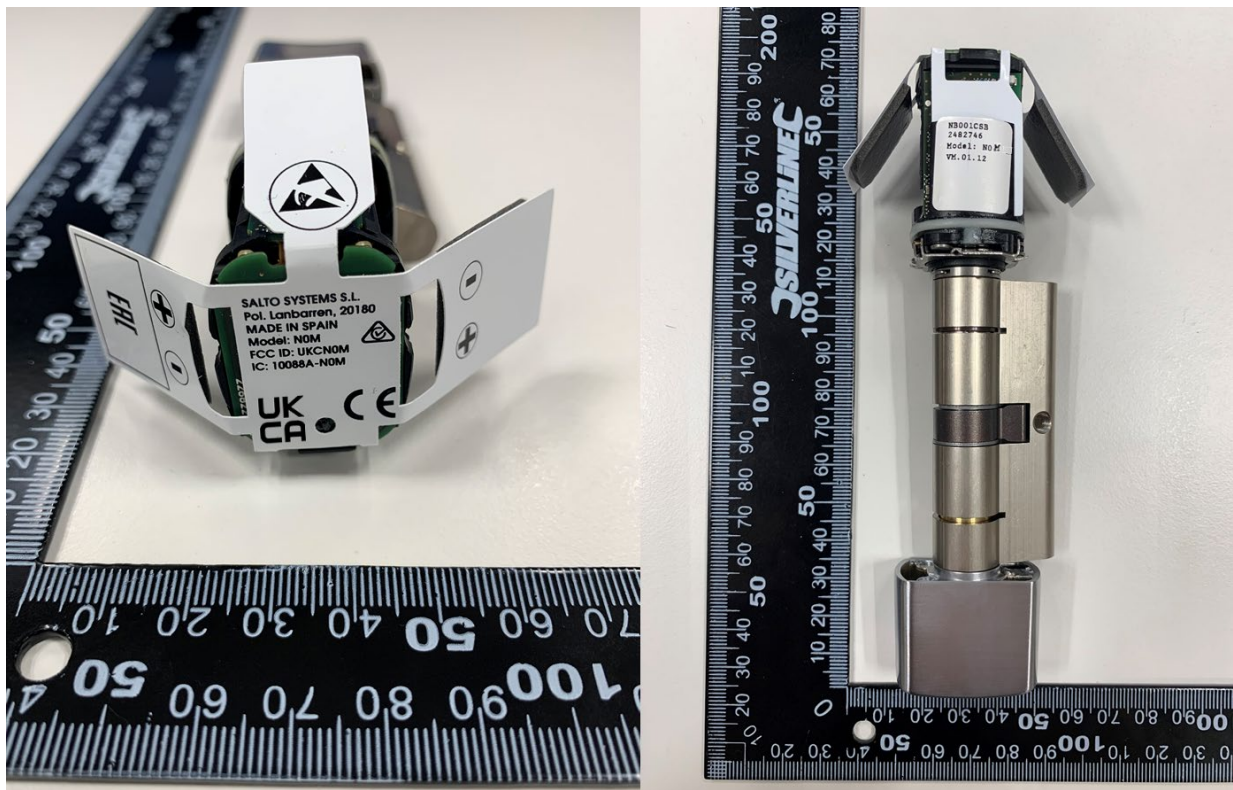
The CE type reference of this equipment is G1824 and it is marked on the bottom of the front side of the cylinder.

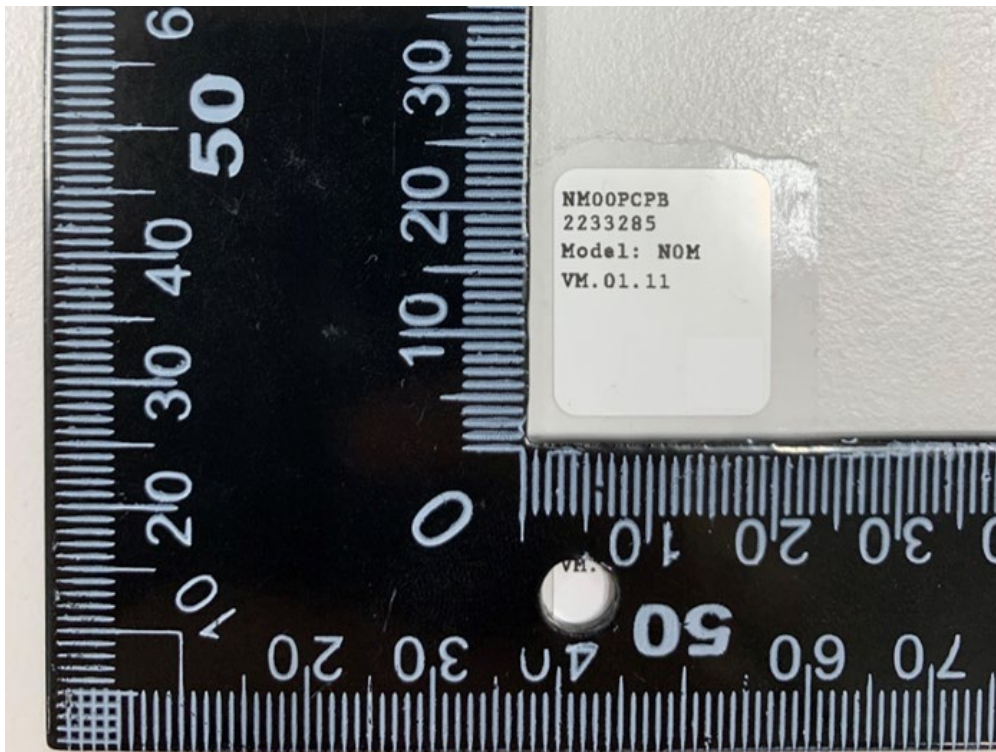
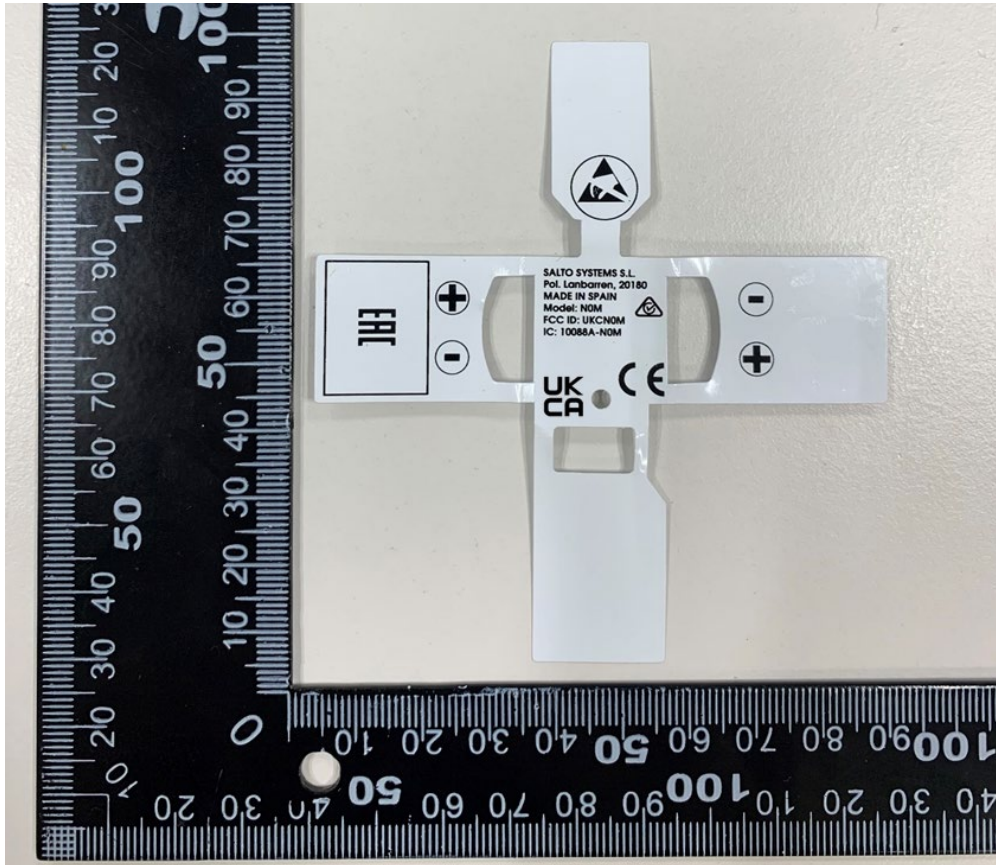
The CE type is common for all electronic models of this product family. It is visible even after installation allowing the identification of the product when it is installed as intended. This item number is also used as an identifier on the EU Declaration of Conformity. Together with the electronic model (marked on the label) is used for the traceability of the equipment.



Label

The label is located on the battery holder gasket. The label contains the following information:





2 N0J

Trademark

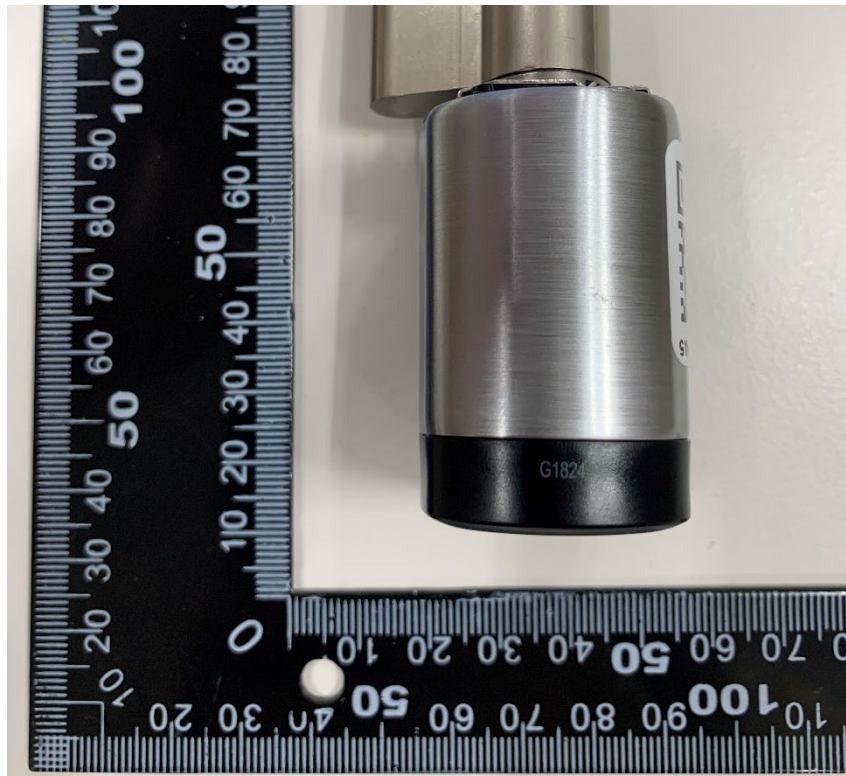
The manufacturers name, SALTO, is marked on the front side of the cylinder. The trademark is visible to the final user.



CE type

The CE type reference of this equipment is G1824 and it is marked on the bottom of the front side of the cylinder.

The CE type is common for all electronic models of this product family. It is visible even after installation allowing the identification of the product when it is installed as intended. This item number is also used as an identifier on the EU Declaration of Conformity. Together with the electronic model (marked on the label) is used for the traceability of the equipment.



Label

The label is located on the battery holder gasket. The label contains the following information:



