

XS4 Locker

E1011

LOM

Product marking

Version	Date	Changes	Author
1.0	20/09/2022	First edition	M.U.

Table of contents

1 LOM	3
Trademark.....	3
CE type.....	5
Label.....	6

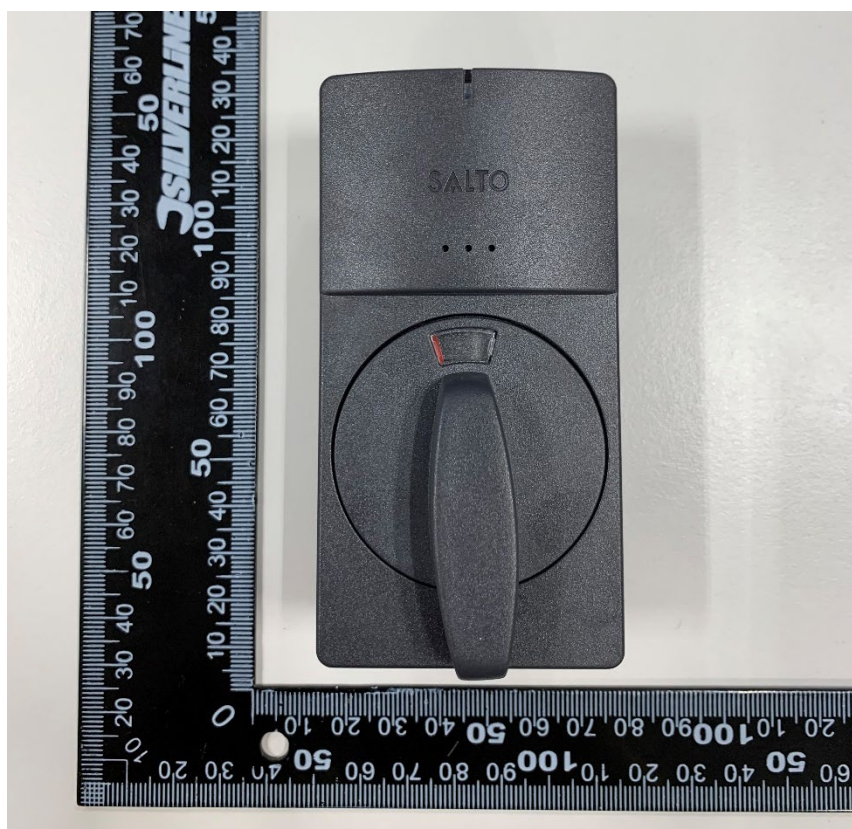
This equipment contains several markings to ensure traceability and fulfilment of the marking requirements established by international regulations.

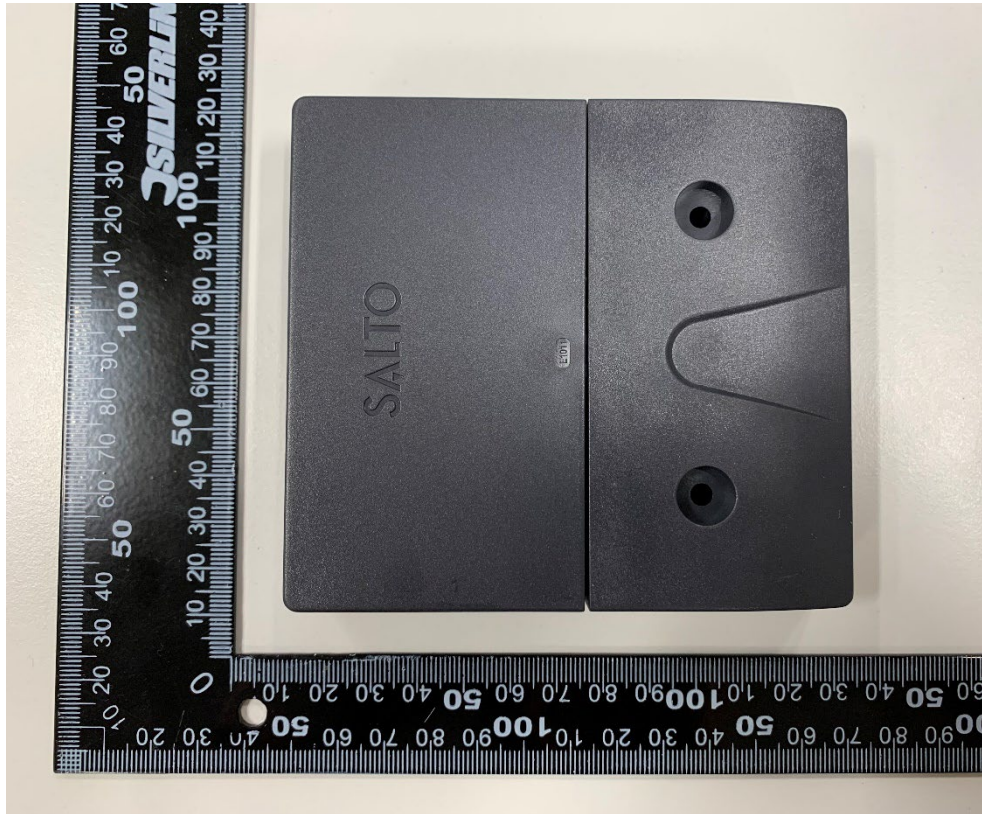
In this product, the marking information is divided into three categories: trademark, CE type and label.

1 LOM

Trademark

The manufacturers name, SALTO, is marked both on the internal and on the external part of the locker lock. The trademark is visible to the final user.

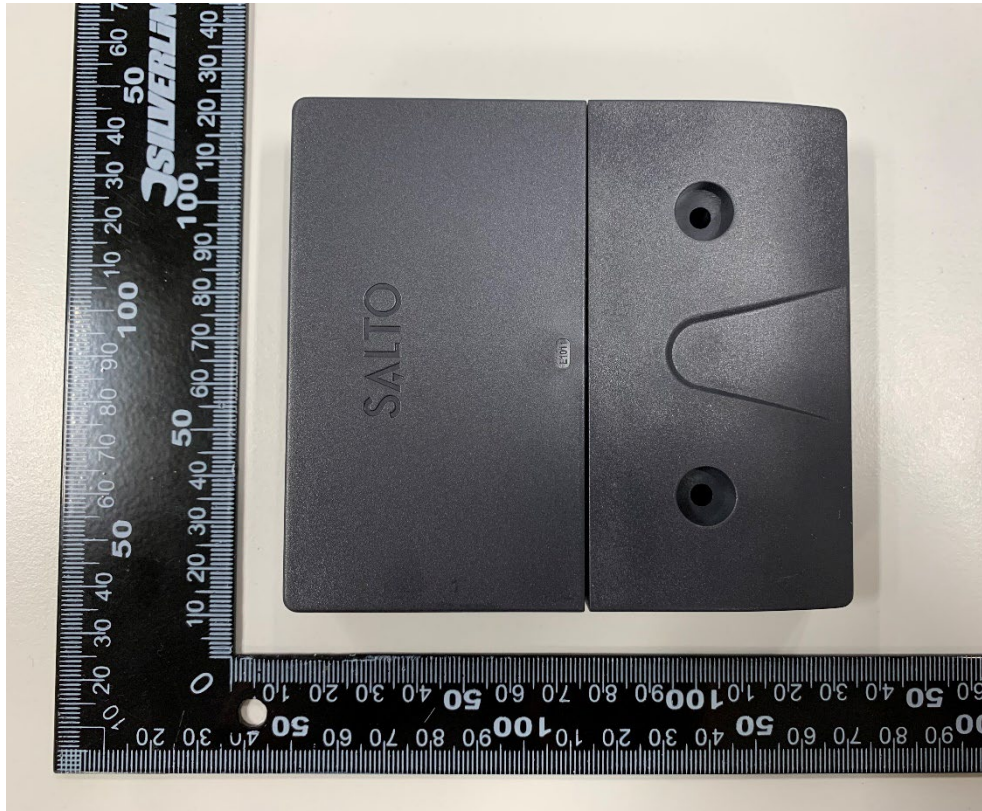




CE type

The CE type reference of this equipment is E1011 and it is marked on the internal part of the locker lock.

The CE type is common for all electronic models of this product family. It is visible even after installation allowing the identification of the product when it is installed as intended. This item number is also used as identifier on the EU Declaration of Conformity. Together with the electronic model (marked on the label) is used for the traceability of the equipment.



Label

The label is located at the rear of the internal part of the locker lock. The label contains the following information:

