

16U23612



240
230
220
210
200
190
180
170
160
150
140
130
120
110
100
90
80
70
60
50
40
30
20
10

mm
10 20 30 40 50 60 70 80 90 100 110 120 130 140 150
0.5mm

16U23612



16U23612

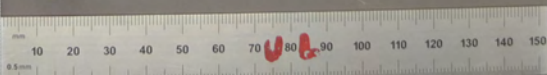


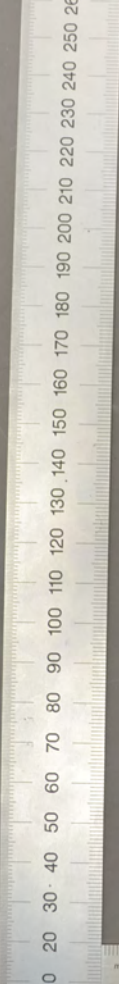
16U23612





18U23612

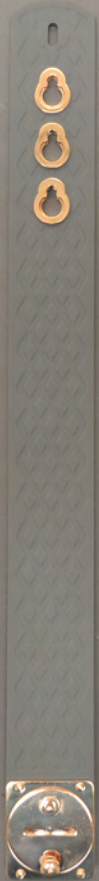




16U23612



10 20 30 40 50 60 70 80 90 100 110 120 130 140 150 160 170 180 190 200 210 220 230 240 250 260 270

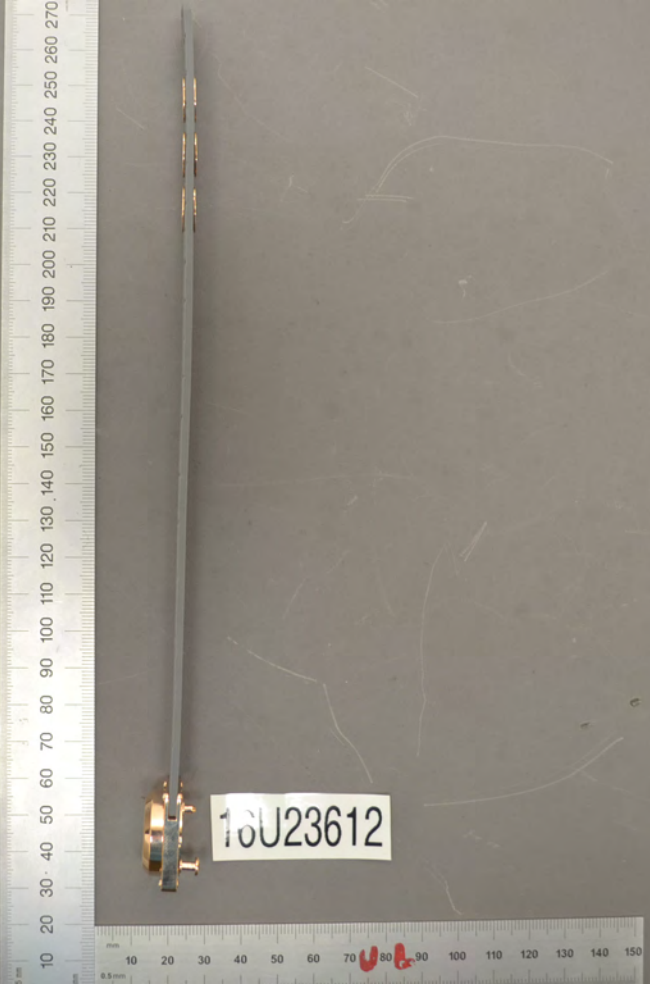


16U23612

10 20 30 40 50 60 70 80 90 100 110 120 130 140 150



16U23612



16U23612

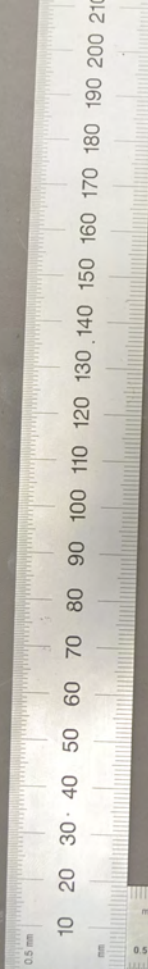


16U23612



10 20 30 40 50 60 70 80 90 100 110 120 130 140 150 160 170 180 190 200 210 220 230

10 20 30 40 50 60 70 80 90 100 110 120 130 140 150



16U23612



16U23612



16U23612




0.5 mm
mm
10 20 30 40 50 60 70 80 90 100 110 120 130 140 150 160 170 180 190 200 210 220



16U23612

mm
0.5 mm
10 20 30 40 50 60 70 80 90 100 110 120 130 140 150

16U23612

A black, curved, flexible device, possibly a sensor or actuator, is shown next to a ruler for scale. The device has a small black strap or tab on its upper curve and two gold-colored contacts on its lower curve. A white label with the number '16U23612' is placed over the device. The ruler shows measurements in millimeters, with a 0.5 mm scale on the left and a 0.5 mm scale on the bottom.



16U23612