










2. Tap **Menu**, and then select **Open File** to open files not in the library; Select **Update Library** to update library list.
3. Select and hold the file or folder for playing, and then select **Play** or **Queue Up**.
4. By tapping **Back** icon, you can return to the Windows Media Player control panel.

Playing Audio or Video Files

1. Tap  to view in full screen.
2. Tap  to connect to Windows Media Mobile website, from which you can find the music and image you want to play.
3. Tap  to return to the beginning of current file or previous file.
4. Tap  or  to play or pause
5. Tap  to skip to next file
6. Tap  or  to adjust volume
7. Tap the  icon to active or disable sound.

You may use synchronization to copy sound and image files from your computer to this device. The Windows Media Player in this device can play Windows Media and MP3 files.

9.6 Games

You may access **Games** to select games you like in your O2 Xda Stealth for entertainment.

1. Tap **Start > Programs > Games**.
2. Tap **Bubble Breaker** or **Solitary** to launch a game.

9.7 Download Agent

Download Agent allows you to manage downloaded files, including installation or deletion. Select the desired downloaded file and tap **Install** or **Cancel** to install the file or cancel installation.

Installing applications

O2 Xda Stealth is powered by Windows Mobile 5.0. It allows installation and removal of external applications downloaded from the web, purchased from stores or send to you from friends over Bluetooth, e-mail or other means.

Please note: Always try to install applications to your Storage Card instead of the phone in order to leave more main storage space for your PIM, E-mail and other system applications.

9.8 STK (SIM Tool Kit) service

The service's availability depends on your operator.

Tap Start > Programs > STK, and then select the STK services provided by your operator.

9.9 Calculator

Calculator allows you to run simple operations in your O2 Xda Stealth.

Tap **Start > Programs > Calculator** to use your calculator.

9.10 Backup

You can create backup of your personal settings and data, and restore the data later.

1. Tap **Start > Programs > Backup**.
2. Check **Create backup image** to create system backup. Check **Restore** to restore the settings and data. When you select to create a backup or restore an image, your O2 Xda Stealth will need to reboot.

Please note: If you install a new version firmware on your O2 Xda Stealth, the backup file of previous version can't be used to restore on the new one.

9.11 Torch

By tapping this icon, you can switch on/of the LED light on beside the camera lens to get significant glow to let you see in the dark. At standby mode, you can also hold **End** key to turn the light on, and press **5 Way Navigation key Center** or **OK** key to turn the light off.

9.12 ZIP

You can save storage space and increase efficiency of your O2 Xda Stealth by compressing some of your files with this ZIP tool.

Zippping files

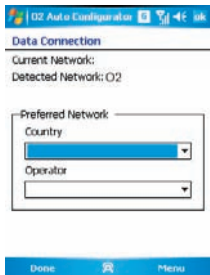
1. To zip a file, tap **Start > File Explorer**.
2. Tap and hold on a file you would like to zip. A pop-up menu will appear.
3. Select **Add to Zip File** in the pop-up menu. In the newly appeared window, you may:
 - Select a zip method according to your need.
 - Set a password, which will be asked for when you unzip the file.
4. Tap **Start** to start compressing the file.

Unzipping Files

1. To unzip a file, tap **Start > Programs > ZIP**.
2. Tap **Unzip** button on the pop-up window. A list of zipped files will appear.
3. You may select a different folder for more zip files. In the file list, tap on the file you would like to unzip.
4. Tap **OK** and enter the password (if required) to decompress the zip file.

9.13 Auto Configurator

When you first switch on your O2 Xda Stealth, you can use **Auto Configurator** to setup your GPRS for using MMS and surfing the Internet. This application provides a user-friendly way to set up operator specific settings, including GPRS, WAP, and MMS. The auto-configuration process can be performed as soon as the SIM card is accessible.



The ways in which this function operates are:

1. During every cold/warm boot, your O2 Xda Stealth will compare the operator ID with the current setting. If these two don't match, a dialog box will ask if you want to perform network configuration now. Once confirmed, the auto-configurator will be launched to configure your O2 Xda Stealth to the current preferred network.
2. By your tapping **Start > Programs > Auto Configurator**, the same detection process will be carried out and possible selections will be listed in the preferred network. Confirm your choice and tap Done to apply the setting or tap **List All Settings** to choose other operator settings. If you cannot find your operator network in the list, you can always setup data connection manually.

Launch **Auto Configurator** by tapping **Start > Program > Auto Configurator**. The application will search from its internal database for appropriate network setting profiles and display the names of these profiles in the **Preferred Network** list.

Please note: Please ensure your SIM card is inserted and flight mode is turned off, for The auto-configuration process is started only when your O2 Xda Stealth is in **HOME** network (not international roaming).



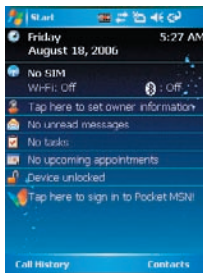
9.14 ClearVue PDF

ClearVue PDF allows you to read Portable Document Format files. These files usually have a .pdf extension.

Opening a PDF file

- 1 Tap **Start** > **Programs** > **ClearVue PDF**
2. Tap **File** > **Open** to view a list of PDF files stored on your O2 Xda Stealth, and choose the file you would like to view.

Reading a PDF file



You can move around using scroll bars in the page when a document is larger than one screen:

- Tap the up/down and right/left arrows to move one line in the desired direction.

You can also use the navigation pad to move around the screen.

- Click and hold the space between the arrow and the scroll bar to move one screen to the desired position.
- Use the left, right, up and down arrow keys on the soft keyboard to move to the desired position.
- You can also tap and hold and then drag the screen to move around the document to the desired position.

Zooming in/out

The Zoom feature allows you to enlarge or reduce the document content on display. Zoom is available from **View** menu.

To get a different view of a document, select from the preset **Zoom** settings, or choose a **Custom Zoom**.

9.15 Excel Mobile

You may use **Excel Mobile** in your O2 Xda Stealth with Microsoft Excel in your computer to easily copy or move files between your O2 Xda Stealth and your computer. Through computer synchronization, you can keep updated content in both your O2 Xda Stealth and your computer.

Creating a new Excel document

Tap **Start > Programs > Excel Mobile > New**, and the screen will open a new Excel file.

Please note: Your **Excel Mobile** can only open one file at a time. When you open a second file at the same time, your O2 Xda Stealth will ask you to save first file. The saved Excel Mobile file in your O2 Xda Stealth could be opened by selecting from **Excel Mobile** list screen.

Deleting / copying or sending a document

To delete, copy or send a file, tap and hold the desired file name to open pop-up menu. Your **Excel Mobile** provides basic worksheet tools, for example, formula, function, sorting and filtering. To show toolbar, tap **View > Tool Bar**.

Synchronizing with Excel files on your PC

Excel Mobile workbooks can be synchronized with Excel workbooks on your PC. To synchronize files, select the Files type for synchronization in ActiveSync Options settings on your PC. When you select **Files**, a **\My Documents** folder is created on your PC's desktop. Place all the files you want to synchronize with your O2 Xda Stealth in this folder. Password-protected files cannot be synchronized. All Excel Mobile files that are stored in **\My Documents** and its subfolders are synchronized with the PC. **ActiveSync** converts documents during synchronization. When you delete a file on your PC or your O2 Xda Stealth, the file will be deleted in the other location the next time you synchronize. For more information on synchronization or file conversion, see **ActiveSync Help** on the PC.

Workbook conversion

Excel files (.xls) and templates (.xlt), created in Excel version 5.0/95 or later on the PC, will be converted to Excel Mobile workbook (.pxl) or template (.pxt) files. The conversion takes place during the following actions:

- During file synchronization.
- When you copy an device from the PC.
- When you open an e-mail message with an Excel file as an attachment.

Excel Mobile workbooks are converted to **Excel** workbooks when they are synchronized or copied back to the PC.

Tips:

When working with **Excel Mobile**, the following tips will help simplify your tasks:

1. Tap **View > Full Screen** to view in full screen. To exit full screen view, tap **View > Full Screen** to return to general view.
2. You can freeze panes: select a cell, then tap **View > Freeze Panes**. You may freeze the top and



- most left window cell on worksheet. Once you freeze the panes, you can see the frozen window cell no matter where the screen is scrolled.
3. You can split the worksheet to view different areas of this worksheet on the same screen. Tap **View > Split**, and then drag the split line to the desired location. To remove the split, select **View > Remove Split**.
 4. Display or hide full horizontal and vertical lines. To hide a row or a column, select any cell on the row or column you wish to hide, then tap **Menu > Format > Row** or **Column > Hide**. To unhide a column or row, **Menu > Format > Row** or **Column >** and select **Unhide**.

Please note: When you are synchronizing or copying files from your O₂ Xda Stealth to PC, Excel Mobile files will be transformed into Excel files. While most of the settings will be kept during this transformation, some of the format and properties may be lost.

9.16 Notes

You may use text notes or voice notes to record information. You may also record voice in **Notes**. If a note file contains voice notes in addition to text, a small icon representing voice notes will appear in the content area of the note. If notes recording is done under the notes file list, then the recording content will be saved as a single file. You can also share your notes with others through e-mail and PC synchronization.

Creating a new note

Tap **Menu > View Recording Toolbar** to show or hide recording tool bar. To add a new note:

1. On **Notes** screen, tap **New**.
2. You may generate notes by writing, drawing, text entry and recording.
 - Tap the keypad icon to hide or display screen input panel.
 - Tap **▲** next to the keypad icon to select input method.
 - Tap **Menu** for **Options**.
 - Tap **OK** to save the note and return to **Notes** screen.
3. To insert the date in a note, deselect and make sure that no drawings are selected. Next, tap and hold anywhere on the note and tap **Insert Date**.

Sending a note by e-mail

In **Notes**, **Word Mobile**, **Excel Mobile**, **PowerPoint Mobile**, and **Pictures & Videos**, you can send files and information to other devices via e-mail.

1. First you must set up **Messaging** to send and receive messages.
2. From the program, select the item you want to send.
3. Tap **Menu > Send**. A new message is created with the item attached.
4. Enter the recipient name and subject and tap **Send**. The message will be sent the next time you synchronize your O₂ Xda Stealth.

Beaming a note

To beam a note, on the note list, tap and hold the note. On the pop-up menu, tap **Beam File**.

9.17 PowerPoint Mobile

You may use **PowerPoint Mobile** in your O2 Xda Stealth with Microsoft PowerPoint in your computer to easily copy or move document between your O2 Xda Stealth and your computer. Through computer synchronization, you may keep the files in both your O2 Xda Stealth and your computer updated. You may use **PowerPoint Mobile** to browse or play PowerPoint file.

Opening a PowerPoint file

Tap **Start > Programs > PowerPoint Mobile**, the screen will show your PowerPoint files list, from which select the file you want to open.




1. Select the folder type displayed in the list.
2. Select **Name** (or **Date, Size, Type**) to change the arrangement of list.
3. Select the document to open.
4. Select and hold a document to activate pop-up menu.
5. Tap **Open** to open a file.
6. Select the keypad icon to hide or reveal screen input panel and select input method.
7. Tap **Menu** for options.

Overriding the playback options in a PowerPoint presentation

1. Tap **Start > Programs > PowerPoint Mobile**.
2. Open the presentation file you want to view, tap **> Show Options**.
3. Tap Playback tab, select the Override playback options for all files, and do any of the following:
 - To turn off builds and other animations, select **Show without animation**.
 - To prevent slide transitions from playing, select **Show without slide transition**.
 - To use the timings recorded with each slide in a presentation, select **Use timings, if present**.
 - To automatically advance to the first slide after the last slide in a presentation, select **Loop continuously**.
4. Tap **OK**.

Zooming in / out

Zoom in to see a portion of a slide in more detail and zoom out to see the entire slide again.

1. In a PowerPoint Mobile presentation, tap **▲ arrow > Zoom In**.
2. Do one of the following:
 - To zoom in another level, tap .
 - To zoom out, tap .
 - To return to the slide show, tap .

9.18 Search

This feature allows you to search a file easily.

Finding a file

1. Tap **Start > Programs > Search**.



2. Enter the file name on **Search for** field and select a file type in **Type** field.
3. Tap Search to start searching and the result will be displayed in **Results** field.

9.19 Voice Speed Dial

You can press down volume key to launch voice commanding procedure, or tap here to start speaking voice commands to your O2 Xda Stealth. Please create your own voice tag before using this function.

9.20 Word Mobile

You may use **Word Mobile** in your O2 Xda Stealth with **Microsoft Word** in your computer to easily copy and move document between the phone and your computer. Through computer synchronization, you may keep updated contents in both your O2 Xda Stealth and your computer.

You may use **Word Mobile** to generate documents like letters, meeting minutes and reports.

Generating a new word document

Tap **Start > Programs > Word Mobile > New**, a new blank document will appear on screen. You may also select default examples from **Menu > Options**.

Please note: Your **Word Mobile** can only open one document at a time. When you open a second document at the same time, your O2 Xda Stealth will ask you to save the first document first. When creating a new document or editing an old document, you may choose to save in the following format: Word file, RTF file and text-only file.

The saved **Word Mobile** file in your O2 Xda Stealth could be opened by selecting from Word Mobile list screen. To delete, copy, or send a file, select and hold desired file names to open pop-up menu.

After opening a Word Mobile file, you may tap **View** to set **Toolbar**, Wrap to Window, and **Zoom**.

1. Select a folder category shown on list display field.
2. Tap **Name** (or **Date**, **Size**, **Type**) to change the arrangement of list.
3. Tap on a file to open it.
4. Tap and hold a file to open pop-up menu
5. Tap **New** to create a new document.
6. Tap the keypad icon to show or hide screen input panel and select input method.
7. Tap **Menu** to open menu for more options.

Synchronizing with Word files on you PC

Word Mobile documents can be synchronized with Word documents on your PC. To synchronize files, select the Files type for synchronization in ActiveSync Options settings on your PC. When you select Files, a **My Documents** folder is

created on your PC's desktop. Place all the files you want to synchronize with your O2 Xda Stealth in this folder. Please note that password protected files cannot be synchronized. All **Word Mobile** files that are stored in **My Documents** and its subfolders are synchronized with the PC. ActiveSync will convert the documents during synchronization. When you delete a file on your PC or your O2 Xda Stealth, the file will be deleted in the other location the next time you synchronize. For more

information on synchronization, or file conversion, see **ActiveSync Help** on the PC.

The Word documents (.doc) and templates (.dot), created in Word 6.0 or later on the PC, are converted to Word Mobile documents (.psw) and templates (.psw). The conversion takes place during the following actions:

- During file synchronization.
- When you copy a Word file from the PC to your O2 Xda Stealth.
- When you open an e-mail message with an attached Word file on your O2 Xda Stealth.

Please note: When you are synchronizing or copying files from your O2 Xda Stealth to PC, Word Mobile files will be transformed into Word files. While most of the text and paragraphing will be kept during this transformation, some of the format and properties may be lost.

9.21 Answering Machine

This function is different from voice mail, you may use answering machine in your O2 Xda Stealth to directly save caller's message to it, which allows you to listen to message more easily and also save call expenses.

Tap **Start > Program > Answering Machine**.

1. Check **Enable Answering Machine** to activate answering machine function.
2. Tap **Save In** to select a storage location for messages.
3. Select **Recording Time** to set the time length for a caller message.
4. Select **Active Time** to set how many seconds that your answer machine will wait before answering an incoming call.
5. Select **Greeting Setup** to set greeting screen.
6. Tap **OK** to save setup and return to **System** tab screen.

You will find callers' messages in **My Answer Machine** folder.

Greeting Setup

Tap **Greeting Setup** to set default answer machine greeting or record your own greeting. Press on the file name to listen to the current greeting. To record a new greeting

1. Tap **User Define** under **Greeting Setup** column.
2. User can type in the file name preferred or use the default one.
3. Tap the record button to record your own greeting.
4. Tap the play button to listen to greeting recorded.
5. Tap **OK** to validate the settings and exit.

Please note:

1. Your answer machine will stop recording when caller ends the call. After activating answer machine, you may press **Stop** to stop recording without interrupting the conversation.
2. When Caller 1 is leaving a message, the incoming call from Caller 2 will become call waiting. You may select to answer or reject call waiting. If you select to answer call waiting, the message of Caller 1 will stop; if you select to reject call waiting, the call waiting from Caller 2 will continue to ring until Caller 2 enters voice mail.
3. If you have checked **Auto Answer** in Phone, Answering Machine will automatically be deactivated.

Chapter 10

Managing Your O2 Xda Stealth

10.1 O2 AutoInstaller

10.2 O2 Connect

10.3 Memory

10.4 Memory management

10.5 Adding or removing programs

Chapter 10 Managing Your O2 Xda Stealth

10.1 O2 AutoInstaller

O2 Auto Install provides you with a list of ready-to-install applications for your O2 Xda Stealth. These optional applications can help you do more with your phone. When you need them, you can choose to install them anytime by tapping **Start > Programs > O2 AutoInstaller > checking Option** next to the application and tap **Next** to start.

10.2 O2 Connect

O2 Connect gives you a direct access to the latest software upgrades, downloads, repair center locations, helpdesk numbers, products and promotions.

Accessing O2 Connect

You can access **O2 Connect** via ActiveSync, GPRS or Wireless LAN.

Once connected, you can synchronize information to your O2 Xda Stealth and read it offline. If you find an item in **O2 Connect** that you would like to download, you can do so and install it instantly, or choose to install later.

Options

Some content items require a user name and password. You can save this user name and password on your O2 Xda Stealth so you don't have to enter them again; simply tap **Tools > Options** and then enter your user name and password when prompted. You can program your O2 Xda Stealth to receive O2 Connect updates at 1, 2, 4, 8 and 12-hour intervals through an ActiveSync connection, or choose between 6 and 12-hour intervals through an active Internet connection.

Enabling/disabling O2 Connect

To disable **O2 Connect**, tap **Tools > Options** and then select **Stop O2 Connect Service**. To enable **O2 Connect**, tap **Tools > Options** and then select **Start O2 Connect service**. By default, if your O2 Xda Stealth is connected to the Internet via ActiveSync, **O2 Connect** will make a connection to the O2 Server every 4 hours to refresh contents. You will always have access to the latest information.

10.3 Memory

When the memory is insufficient, this device cannot automatically allocate memory, you may follow the steps below to free up more memory:

Moving some files to mini SD card

1. Tap **Start > File Explorer**.
2. Tap and hold selected items.
3. Tap **Cut** on the pop-up menu.
4. Switch to **Storage Card** category
5. Tap and hold and then tap **Paste**.

Deleting the unwanted files

1. Tap **Start** > **File Explorer**.
2. Tap and hold selected items.
3. Select **Delete**.

Saving attachment to mini SD card

1. Tap **Start** > **Messaging** > **Menu** > **Tool** > **Options** > **Storage** tab.
2. If you have inserted a memory card, check **Save Attachment to Memory Card**.
3. E-mail attachments will automatically be saved to memory card.

Clearing histories and deleting files from Internet Explorer

1. Tap **Start** > **Internet Explorer** > **Menu** > **Tool** > **Options** > **Memory** tab.
2. Tap **Clear History** and **Delete File** to delete browsed web page related record.

10.4 Memory management

1. Tap **Start** > **Settings** > **System** tab > **Memory** > **Main** tab:
Display current memory status of this device.
2. Tap **Start** > **Settings** > **System** tab > **Memory** > **Storage Card** tab:
Display the memory status of storage card in this device.
3. Tap **Start** > **Settings** > **System** tab > **Memory** > **Running Program** tab:
Display all current running programs in this device. Select any program from **Running Programs List**, you may select to **Activate** or **Stop**.
Activate: run the highlighted programs
Stop: stop running highlighted programs
Stop All: stop running all programs on **Running Programs List**

10.5 Adding or removing programs

All programs pre-installed in the device will be saved in ROM (Read Only Memory) and are not removable. Data saved in ROM will not be lost by accident. All programs that you installed will be saved in RAM (Random Access Memory). As long as there is sufficient space in this device, you may install suitable programs by preference.

Adding programs through ActiveSync

1. Before installing the program, please make sure that your O2 Xda Stealth processor is suitable for the software. Tap **Start** > **Settings** > **System** tab > **About** > **Version** tab to check for information of this phone.
2. Download the desired software to your computer (Please select software that is designed for Pocket PC and this phone).
3. Read installation instructions, readme file, or accompanied programs provided to you.
4. Connect your computer with this phone.



5. Install executive file to your computer.

If this file contains installation program, the installation wizard will automatically activate. Please follow the instructions on screen. Once the installation on your computer is complete, the program will automatically be installed to this device. If this file does not contain any installation program, an error message will show on the screen and tell you this program is invalid, which is not suitable for your computer. You must move this program to this device manually. If you cannot find any installation instructions for this program, please use “Browse” function of **ActiveSync** to copy program file to **Program Files** folder in this device. After completing installation, tap **Start > Programs**, and then select the program icon to launch that program.

Adding programs through Internet

You may download software suitable for this phone from Internet.

1. Before installing the program, please make sure that your O2 Xda Stealth processor is suitable for the software.
2. Tap **Start > Settings > System tab > About > Version** tab to check information in this phone.
2. Directly download programs to this device by using **Internet Explorer** in this phone. (Please select programs designed for Pocket PC and this phone)
3. Read installation instructions, readme file, or accompanied programs provided to you.
4. Run installation executive file in your computer.

Adding programs to Start menu

Tap **Start > Settings > Personal tab > Menu**.

1. Check the programs to be displayed on **Start** menu.
2. Tap **OK** to save settings and return to Personal tab screen.

Removing programs

Tap **Start > Settings > System tab > Remove Program**.

Select the programs you would like to delete from **Programs in storage memory** list, and then select **Remove** to delete highlighted programs. If the installed programs list does not contain the program you intend to remove, you may use **File Explorer** in this phone to find the program and delete it by selecting and holding the program's name and then select **Delete** from the pop-up menu.

Chapter 11 Specifications



Chapter 11 Specifications

Item	Specifications
System Information	
Operating System	Windows Mobile 5.0
Processor	Intel PXA 272 416MHz
Memory	192 MB ROM, 64MB SDRAM
Size	
Dimensions (mm)	110 x 53 x 22.5
Weight (in grams)	150g (with battery)
Battery	
Battery capacity	Li-Polyma pack1300 mAh or higher
Standby time	150Hr
Talk time	4.5Hr
Charging time	
Charger	1.5Hr
Display Characteristics	
Type	2.4-inch, 65k-color TFT LCD touch panel
Resolution	240 x 320
Band	
Band	GSM 900/1800/1900
Connectivity	
Bluetooth	1.2
WLAN	IEEE 802.11b/g
GPRS	GPRS Class A/B GPRS Uplink/Downlink Class 10
WAP	Yes
CSD	Yes
USB	1.0
Image	
Format	JPG/GIF/PNG
Max size (per)	
Audio	
Format	MP3/WAV/WMA/MIDI/AMR/AAC/AAC+
Max size	Depends on available RAM

Item	Specifications
Video	
Format	PEG4/3GPP/WMV
Max size	Depends on available RAM
Phonebook	
Size	Depends on available RAM
Ring tone	
Type	MP3, WAV, SMF
Polyphone	192 Polyphonics
Digital camera	
Type	JPEG
Pixels	2.0 mega-pixel
Auto focus	Yes
Video recording	Yes
Messaging	
Push E-mail	Windows Direct Push
SMS	Yes
MMS	Yes
E-mail	Yes
MSN	Yes
External memory	
Type	Mini SD Card
Max size	Support up to 1 GB

Chapter 12 FAQs

Chapter 12 FAQs

Why can't I turn on my phone as I press the power key?

Either you didn't press the key long enough, or the phone has shut down because the battery power level is too low to make calls. Please recharge the battery.

How do I suspend the screen display or wake up the phone?

Press and hold the power key to turn off the phone. If the screen display is off, press the power key to wake up your phone.

Why does the screen freezes and does not respond to my commands or input?

Reboot the system to free up memory. The system shall operate more efficiently. If the system still lags after rebooting, you will need to clean boot your O2 Xda Stealth. To clean boot, power off your O2 Xda Stealth and then press Flag key, OK key and the Power key at the same time, for about 5 seconds. Your O2 Xda Stealth will reset to factory defaults and reboot.

Please note: When you perform a clean boot on your O2 Xda Stealth, all your personalized settings, information, and programs installed will be removed. The system will reset to factory defaults.

Why does my phone display "INSUFFICIENT MEMORY" When I open a file or a program?

The device memory is shared by both storage and programs. You can free up some memory by removing some of the rarely used programs you installed or removing rarely used files.

Why doesn't the screen respond accurately to my stylus taps?

Tap **Start** > **Settings** > **System** tab > **Screen** > **General** tab. Select **Align Screen** to align the screen.

Why does my O2 Xda Stealth launch wrong programs or ignore my command when I press a device key?

Tap **Start** > **Settings** > **Personal** tab > **Buttons** and check whether the programs assigned to each key is correct. You can change these key assignments by preference.

My O2 Xda Stealth can't form a successful connection with ActiveSync.

Please make sure you have installed ActiveSync 4.2 or later on your computer. You can find ActiveSync in the installation CD, or you can download the latest version from Microsoft's website. Please make sure you have connected your O2 Xda Stealth to the computer by plugging in the USB cable to both your O2 Xda Stealth and the computer. Make sure that you are not running another program that uses the same serial port. If the connection still fails, remove ActiveSync on your computer and reinstall.

Why does my phone display 'Insert SIM', what does this mean?

Please insert the SIM card before you can use the phone. If it is already installed, remove and clean the metal contacts area with a dry cloth, and then insert again.

Why does my phone display 'EMERGENCY ONLY', what does this mean?

You may not have your SIM card properly installed, or you are out of network range.

Why does my phone display 'NO NETWORK', what does this mean?

You're outside network range. If you're inside a building or a basement, try moving towards a window.

Why are there double entries in my Contacts list?

You may have selected **Show SIM Contacts** in **Contacts** menu. If you have already copied your SIM contacts to your O2 Xda Stealth, then you do not need to select this option.


Why are some calls not processed?

Certain call barring function may have been set to restrict phone usage. Check the call barring status and cancel as necessary.

Can I send and receive e-mails and surf the Mobile Internet on my phone?

O2 Xda Stealth allows you to access the Internet from your phone. For instructions on how to send and receive e-mails, please refer to the user manual or contact O2 Customer Service.

Why can't my O2 Xda Stealth make any sound alerts?

Tap on the speaker icon  on the top right corner of the screen, and then adjust the alert or ring volume. You could also use the volume key on the left side of your O2 Xda Stealth to adjust volume.

Where can I check why my phone has gone wrong?

Please have your warranty card and phone ready and contact your local dealer.



Chapter 13 Safety Bit

13.1 Safety information

13.2 Phone care

13.3 Driving safety

13.4 Electronic devices

13.5 Other safety guidelines

13.6 Cautions

13.7 About this guide

Chapter 13 Safety Bit

This chapter contains important information on safe and efficient operation. Please read this information before using your O₂ Xda Stealth.

13.1 Safety information

Your O₂ Xda Stealth Pocket PC Phone has been designed, manufactured and tested so as not to exceed the limits for exposure to electromagnetic fields recommended by the Council of the European Union. These limits are part of comprehensive guidelines developed by independent scientific organizations.

European standards provide for the amount of radio frequency electromagnetic energy absorbed by the body when using a phone to be measured by reference to the Specific Absorption Rate (SAR). The highest SAR value for your O₂ Xda Stealth when tested for use at the ear is as below.

The maximum SAR values for the O₂ Xda Stealth are:

- **0.436** W/kg @10g (CE)
- **0.23** W/kg @1g (FCC) head (rounded from 0.22863)
- **0.80** W/kg @1g (FCC) body (rounded from 0.799)

13.2 Phone care

You should never attempt to open the phone casing. There are no user-serviceable parts inside, and you might damage sensitive electronic circuits and components.

Un-authorized disassembly will void the warranty. You should never leave your phone in the window of your car or otherwise expose it to strong sunlight or excessive heat for a prolonged period of time as this may damage it. You should never handle your phone with wet hands or expose it to moisture or liquids of any kind. Continuous changes from a cold to a warm environment may lead to condensation inside the phone, resulting in corrosion and possible damage. If you pack your phone in your suitcase during travel, beware not to damage it. Cramming a suitcase may crack the LCD display. While in flight, switch your O₂ Xda Stealth to flight mode. (Turn off phone or wireless functions). When instructed to do so, turn off your phone when on board an aircraft. As with all other radio devices, touching the built-in antenna area during telephone conversation may impair the quality and lead to shorter standby time due to increased power consumption.

The battery

Your phone is equipped with a high performance Li-Ion battery. Optional battery types may be available, check with your local retailer. Observe the maintenance guidelines and your battery should

give you a long service life.

- At the beginning of the battery's life, fully charge and discharge (let it go flat) three times.
- Do not over charge the Li-Ion battery, as this can result in a reduction in battery performance and life span. The recommended maximum charge time is 2.5 hours.
- Avoid repeated short charging. It is preferable to let the battery go flat and then recharge it completely.
- Avoid charging in strong heat or extreme cold. Ambient room temperature is preferable. The battery has its optimum performance in an ambient temperature of +5 °C to +50 °C.
- Don't store a battery near a fire or heat source.
- Use only the battery approved by the manufacturer.
- Never replace the battery with a non-approved battery.
- Never soak the battery in water or any other fluid.
- Never try to open the battery as it contains substances that might be harmful if swallowed or allowed to come into contact with unprotected skin.
- Never short-circuit the battery, as it may overheat and cause a fire. Keep away from jewellery and other metal objects.
- Never dispose of the battery in a fire. It could explode and release harmful substances into the environment.
- Never dispose of the battery with your regular household waste. Take it to a hazardous material collection point.
- Do not touch the battery terminals.

Caution: Risk of explosion if battery is replaced by an incorrect type.

The charger

- Use only the charger supplied with your phone.
- Never pull the charger cord to release it from the mains – pull the charger itself.

Memory card

- Do not remove or insert a memory card or turn off the handset whilst data on the card is being edited.
- Do not touch the metal terminals with your hands or metal objects.
- Do not bend the memory card or subject it to violent impacts. Keep away from water and high temperatures.
- Keep all memory cards out of the reach of small children.
- Do not short circuit the contact points or expose it to liquids or moisture. When not in use, keep it in the antistatic container it came in.
- Do not use force when inserting or handling the card, and do not expose to excessive heat or strong magnetic fields.

Cleaning and storing

- Your phone should always be handled with care and protected from dirt, dust and damp. To avoid scratches, never place your phone face down.



- If cleaning is necessary, switch the phone off and wipe carefully with a soft, slightly damp (not wet) cloth. Use a cotton swab to clean the camera lens. Allow the phone to dry completely before switching it on. Never use solvents for cleaning.
- If you are not going to use your phone for some time, fully charge the battery and store the phone in a dry place away from direct sunlight. Your phone should be switched off during storage. Recharge every 6 to 12 months.
- Never expose your phone to heat or strong sunlight.
- Never expose your phone to moisture or liquids of any kind.
- Do not paint your phone or otherwise block the keypad, microphone or earpiece function, i.e. with stickers.

13.3 Driving safety

Never use the mobile phones whilst driving. It is an offence whilst driving to hold a phone or cradle it in your neck, at any point during the setup, making or taking of a phone call, text message or any other data related mobile communication. Use of fully installed car kits is still permitted, as are the use of alternate hands-free accessories.

In the interest of safety, we would recommend use of a cradle whilst using any form of hands-free accessory. When driving.

We recommend that you use voicemail wherever possible, and that you listen to your messages when you are not in the car. If you must make a hands-free call when driving keep it brief.

An airbag inflates with great force. **Do not** place objects, including both installed and portable wireless equipment, in the area over the airbag or in the air bag deployment area. If in-vehicle wireless equipment is improperly installed and the air bag inflates, serious injury could result.

Warning: Failure to follow these instructions may lead to serious personal injury and possible property damage.

13.4 Electronic devices

Most modern electronic equipment is shielded from RF energy. However, certain electronic equipment may not be shielded against the RF signals from your pocket PC phone.

Pacemakers

The Health Industry Manufacturers' Association recommends that a minimum separation of six (6") inches be maintained between a phone and a pacemaker to avoid potential interference with the pacemaker. These recommendations are consistent with the independent research by and recommendations of Wireless Technology Research.

If you have a pacemaker

- Always keep your phone more than six inches from your pacemaker when it is turned on.

- Do not carry your phone in a breast pocket.
- Use the ear opposite the pacemaker to minimize the potential for interference
- If you have any reason to suspect that interference is taking place, turn your phone off immediately.

Hearing aids

Some digital phones may interfere with some hearing aids. In the event of such interference, call O2 Customer Service to discuss alternatives.

Other medical devices

If you use any other personal medical device, consult the manufacturer of your device to determine if they are adequately shielded from external RF energy. Your physician may be able to assist you in obtaining this information.

Turn your phone **off** in healthcare facilities when any regulations posted in these areas instruct you to do so.

Hospitals or healthcare facilities may be using equipment that could be sensitive to external RF energy.

Vehicles

RF signals may affect improperly installed or inadequately shielded electronic systems in motor vehicles. Check with the manufacturer or its representative regarding your vehicle. You should also consult the manufacturer of any equipment that has been added to your vehicle.

Posted facilities

Turn your phone **off** where posted notices so require.

Magnetic media

Magnetic fields generated by Pocket PC Phone phones may damage data on magnetic storage media such as credit cards, computer discs or tapes. Do not place your phone next to such media. You should never expose your phone to strong magnetic fields as this may cause temporary malfunction.

13.5 Other safety guidelines

Aircraft

Regulations prohibit using your phone while in the air. Switch **off** your phone before boarding an



aircraft or change to flight mode.

Blasting areas & Potentially explosive atmospheres

The user needs to switch off the device when exposed to areas with potentially explosive atmospheres such as petrol stations, chemical storage depots and blasting operations.

Sparks in such areas could cause an explosion or fire resulting in bodily injury or even death.

Areas with a potentially explosive atmosphere are often, but not always, clearly marked. They include fuelling areas such as petrol stations; below deck on boats; fuel or chemical transfer or storage facilities; vehicles using liquefied petroleum gas (such as propane or butane); areas where the air contains chemicals or articles, such as grain, dust, or metal powders; and any other area where you would normally be advised to turn off your vehicle's engine.

FCC Regulations

This mobile phone complies with part 15 of the FCC Rules. Operation is subject to the following two conditions: (1) This device may not cause harmful interference, and (2) this device must accept any interference received, including interference that may cause undesired operation.

This mobile phone has been tested and found to comply with the limits for a Class B digital device, pursuant to Part 15 of the FCC Rules. These limits are designed to provide reasonable protection against harmful interference in a residential installation. This equipment generates, uses and can radiate radio frequency energy and, if not installed and used in accordance with the instructions, may cause harmful interference to radio communications. However, there is no guarantee that interference will not occur in a particular installation. If this equipment does cause harmful interference to radio or television reception, which can be determined by turning the equipment off and on, the user is encouraged to try to correct the interference by one or more of the following measures:

- Reorient or relocate the receiving antenna.
- Increase the separation between the equipment and receiver.
- Connect the equipment into an outlet on a circuit different from that to which the receiver is connected.
- Consult the dealer or an experienced radio/TV technician for help.

Changes or modifications not expressly approved by the party responsible for compliance could void the user's authority to operate the equipment.

Choking

Keep your phone away from children as the SIM card or other small parts present a choking hazard.

13.6 Cautions

Your Pocket PC Phone is a high quality piece of equipment. Before operating the equipment, read all instructions and cautionary markings. Use only original or manufacturer approved accessories, batteries and chargers.

- **Do not** use this equipment in an extreme environment where high temperature or high humidity exists.
- **Do not** abuse the equipment. Avoid striking, shaking or giving it a shock. When not using the unit, lay it down to avoid possible damage due to instability.
- **Do not** expose this equipment to rain or spilled beverages.
- **Do not** use unauthorized accessories.
- **Do not** disassemble the phone or its accessories. If service or repair is required, return the unit to an authorized service centre. If the unit is disassembled, the risk of electric shock or fire may result.
- **Do not** short-circuit the battery terminals with metal items etc.

13.7 About this guide

This document is provided as a user guide to the O₂ Xda Stealth Pocket PC Phone and to this system only. O₂ Xda Stealth is a trademark of the O₂ group of companies.

Latest version of user guide can be found on our website <http://SeeO2.com>.

Mandatory statements

We hereby declare that the O₂ Xda Stealth is in conformity to all the essential requirements of Directive 1999/5/EC.



Index

A

About
ActiveSync Synchronization
Answer Machine
Applications
Attachments

B

Background
Backlight
Backup
Battery
Beam
Block Recognizer
Bluetooth
Bluetooth Connections
Bluetooth Headset
Bonds
Brightness
Browsing the Internet
Buttons

C

Calculator
Calendar
Call Barring
Caller ID
Call Forwarding
Call Waiting
Call History
Camera
Charging the Battery
Cell Broadcast Setting
Certificates
ClearVue PDF
Connections
Connection Settings
Contacts

D

Device Lock
DNS
Download Agent
Drawing on the Screen
Driving Safety

E

E-mail
E-mail Account
Emergency Calls
Excel Mobile

F

Favorites
File Explorer
Flash light
Flight Mode
Frame

G

Games
GPRS
GPRS Monitor
GPS

H

Headset Volume Limiter
Headset Plug
Icons
Input
Input Method
Insert the battery & SIM card
Installing ActiveSync
International Calls
Internet Explorer
Internet Sharing
ISP

J

JAVA

K

Keyboard

Keypad Tone

L

Landscape

LED Indicator

Letter Recognizer

Lock

M

Making a call

Menus

Memory

Memory Expansion

Messaging

Microsoft® Exchange Server

MMS

MSN Account

MSN Hotmail

MSN Messenger

MSN Options

Multimedia messages (MMS)

N

Navigation Key

Network

Notes

Notifications

O

O2 Auto Configurator

O2 Auto Install

O2 Connect

Outlook E-mail

Owner Information

P

Password

Personal settings

Phone

Photo Editor

Pictures & Videos

PIN

Playlist

Pocket MSN

POP3

Power

Power Management

Power on/off

PowerPoint Mobile

Portrait

Programs

PUK

Push E-mail

R

Receiving/Ignoring a call

Recorder

Recording a Message

Recording a Clip

Recording Time

Regional Settings

Reminder

Remove Programs

Reset

Restore To Factory Settings

Ring Tone

Ring Type

S

SAR
Safety Bit
Scheduler
Screen
Screen Orientation
Screen Alignment
Search
Settings
Show SIM Contacts
Shutter Sound
Signing in MSN Messenger
SIM
SIM Contacts
SMS
Smart Input
Sounds & Notifications
Speed Dial
Spell check
Start Menu
STK
System Settings
System Info

T

Taking a Photo
Tasks
Terminal Services Client
Text Message
Today
Torch
Transcriber

U

USB Cable
USB Card Reader

V

Vibrate
Voicemail
Voice Speed Dial
VPN

W

Wi-Fi
Wi-Fi Utility
Windows Media
Wireless LAN
Wireless Manager
Word Mobile

Z

Zoom In/Out
ZIP

