

ALSAS-10U VER 2.3.6 APREL Laboratories

SAR Test Report

Report Date : 30-Apr-2008
Measurement Date : 30-Apr-2008

Product Data

Device Name : GIGA
Type : Std Form Cell Phone
Model : Atom V
Frequency : 2450.00 MHz
Drift Time : 0 min(s)
Length : 116.1 mm
Width : 59.5 mm
Depth : 15.5 mm
Antenna Type : Internal

Phantom Data

Type : SAM-Right
Size (mm) : 280 x 280 x 280
Location : Right

Tissue Data

Type : HEAD
Serial No. : 325-H
Frequency : 2450.00 MHz
Last Calib. Date : 30-Apr-2008
Temperature : 21.10 °C
Ambient Temp. : 22.90 °C
Humidity : 48.00 RH%
Epsilon : 40.55 F/m
Sigma : 1.84 S/m
Density : 1000.00 kg/cu. m

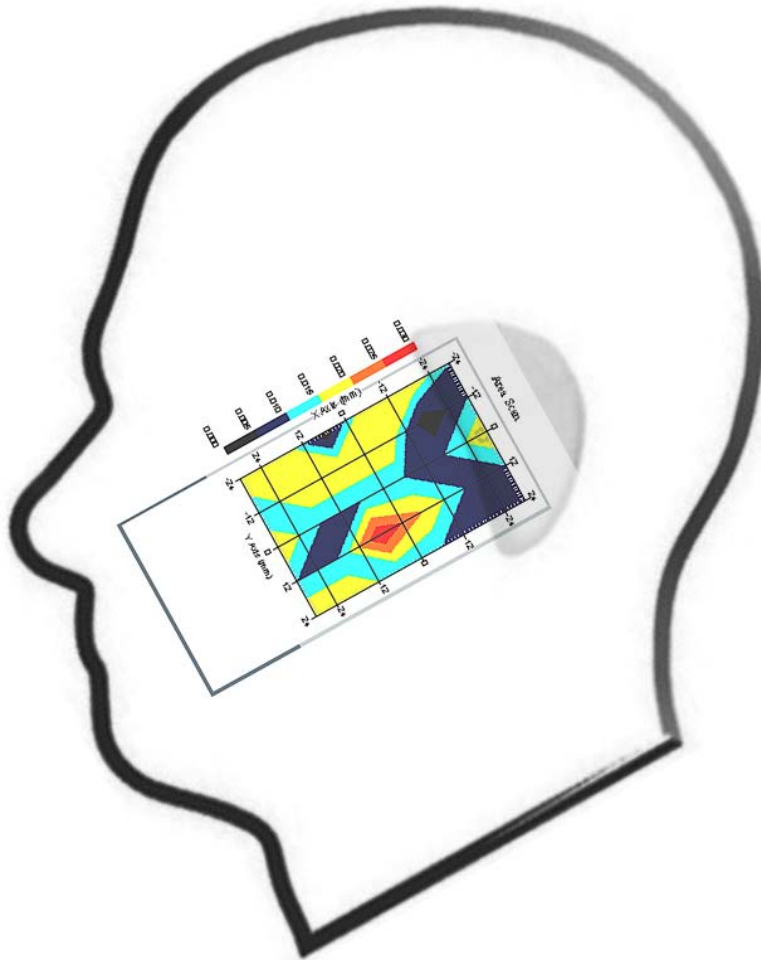
Probe Data

Name : Probe 264
Model : E020
Type : E-Field Triangle
Serial No. : 264
Last Calib. Date : 22-Aug-2007
Frequency : 2450.00 MHz
Duty Cycle Factor: 1
Conversion Factor: 5
Probe Sensitivity: 1.20 1.20 1.20 $\mu\text{V}/(\text{V}/\text{m})^2$
Compression Point: 95.00 mV
Offset : 1.56 mm

Measurement Data

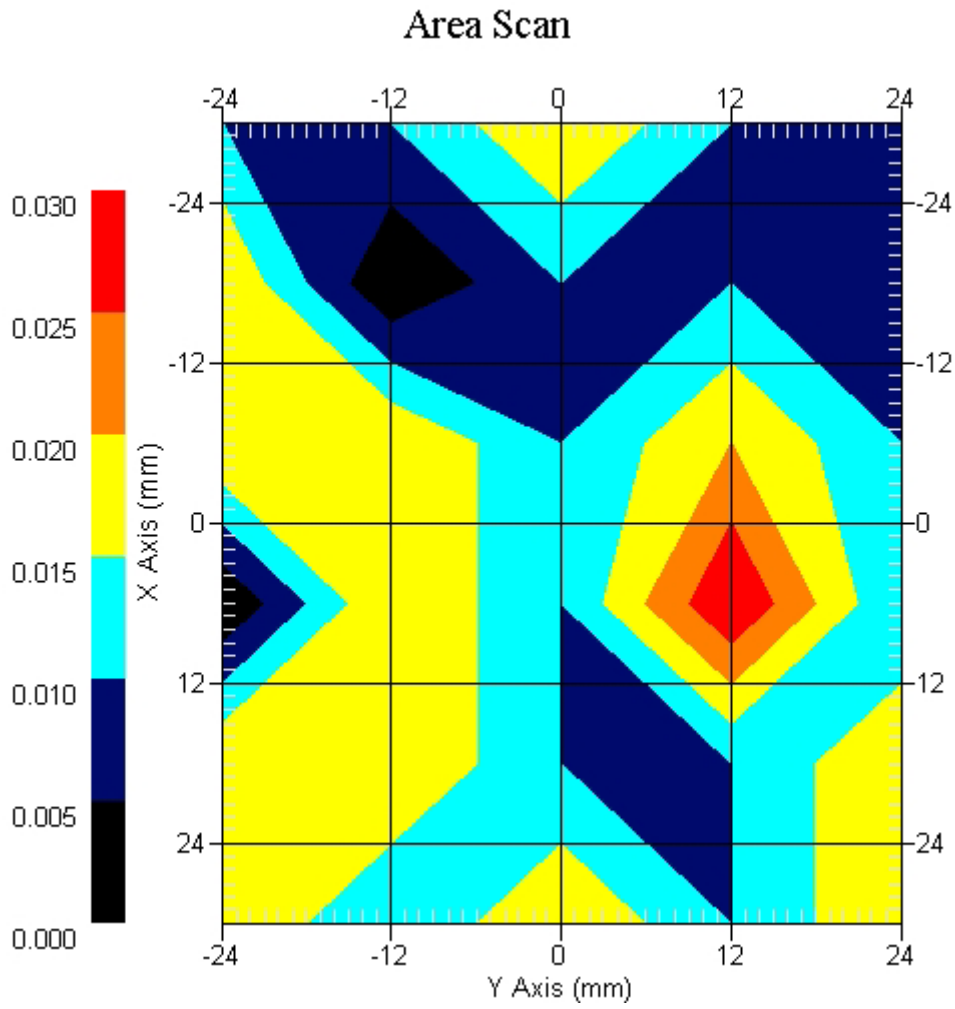
Crest Factor : 1
Tissue Temp. : 21.10 °C
Ambient Temp. : 22.90 °C
Area Scan : 6x5x1 : Measurement x=12mm, y=12mm, z=4mm
Zoom Scan : 7x7x7 : Measurement x=5mm, y=5mm, z=5mm
Power Drift-Start : 0.033 W/kg
Power Drift-Finish: 0.032 W/kg
Power Drift (%) : -3.030

DUT Position : Touch
Channel : 1



1 gram SAR value : 0.055 W/kg
10 gram SAR value : 0.031 W/kg
Area Scan Peak SAR : 0.059 W/kg
Zoom Scan Peak SAR : 0.098 W/kg

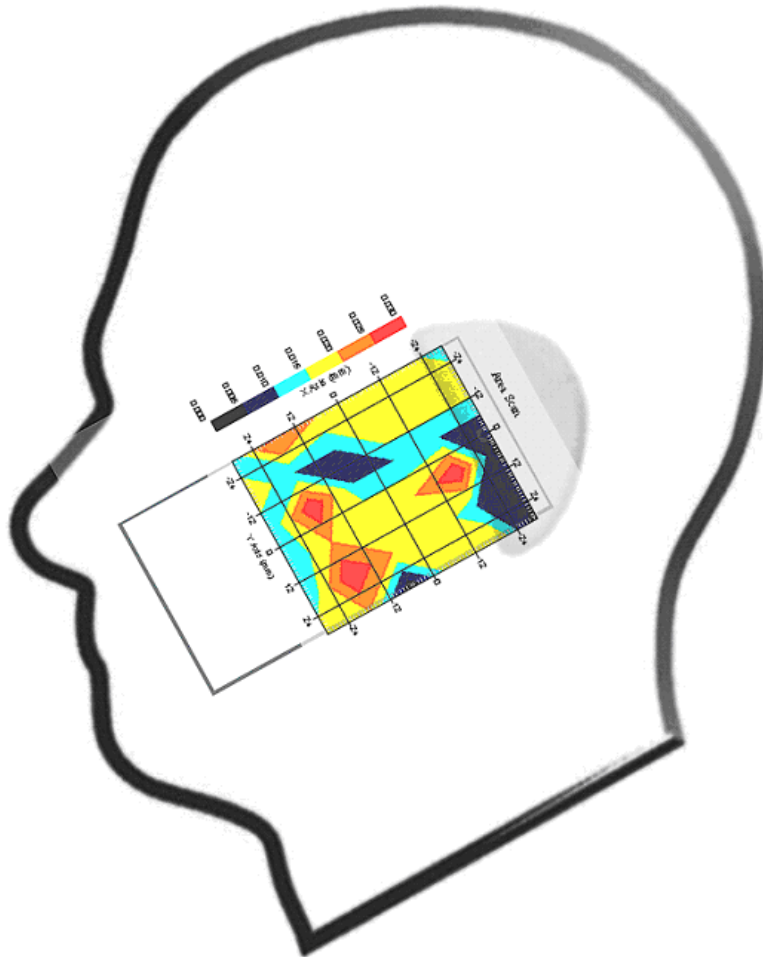
This is previous page plot (zoom in)



Measurement Data

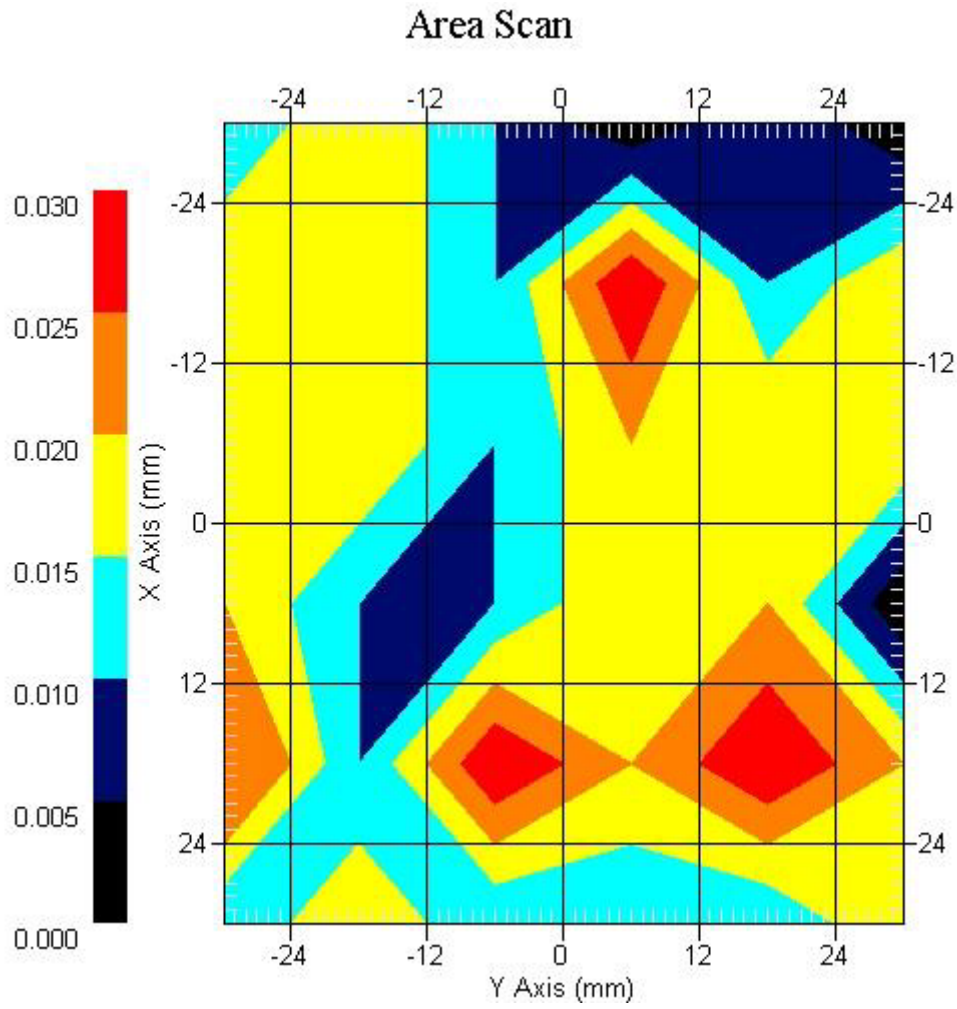
Crest Factor : 1
Tissue Temp. : 21.10 °C
Ambient Temp. : 22.90 °C
Area Scan : 6x6x1 : Measurement x=12mm, y=12mm, z=4mm
Zoom Scan : 7x7x7 : Measurement x=5mm, y=5mm, z=5mm
Power Drift-Start : 0.026 W/kg
Power Drift-Finish: 0.026 W/kg
Power Drift (%) : -0.514

DUT Position : Touch
Channel : 6



1 gram SAR value : 0.033 W/kg
10 gram SAR value : 0.018 W/kg
Area Scan Peak SAR : 0.037 W/kg
Zoom Scan Peak SAR : 0.065 W/kg

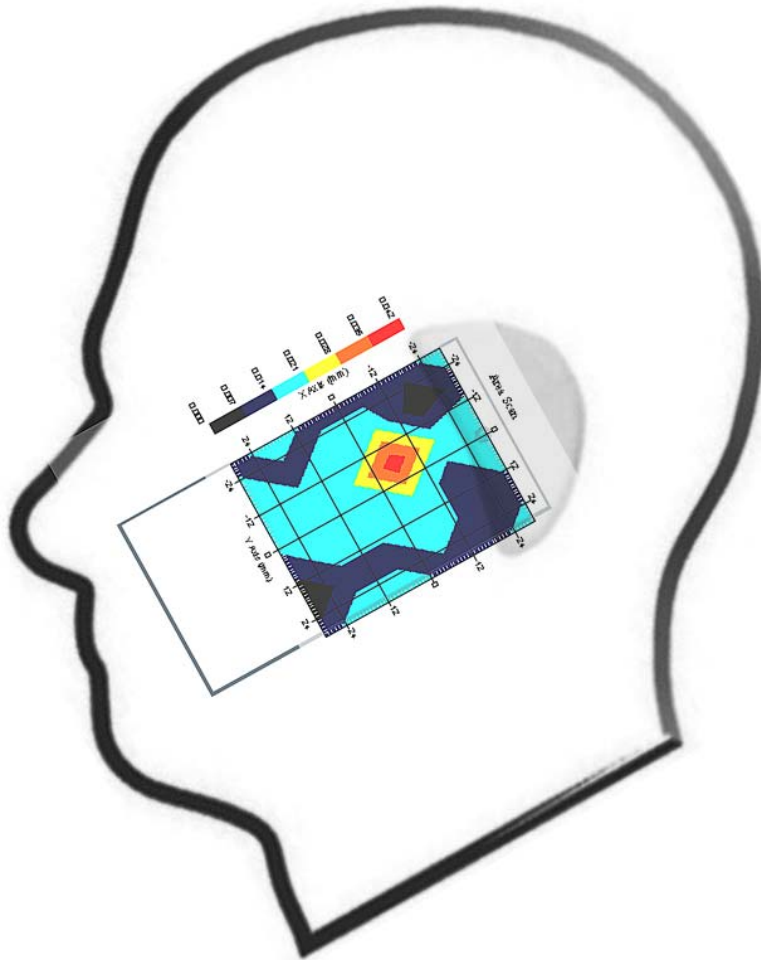
This is previous page plot (zoom in)



Measurement Data

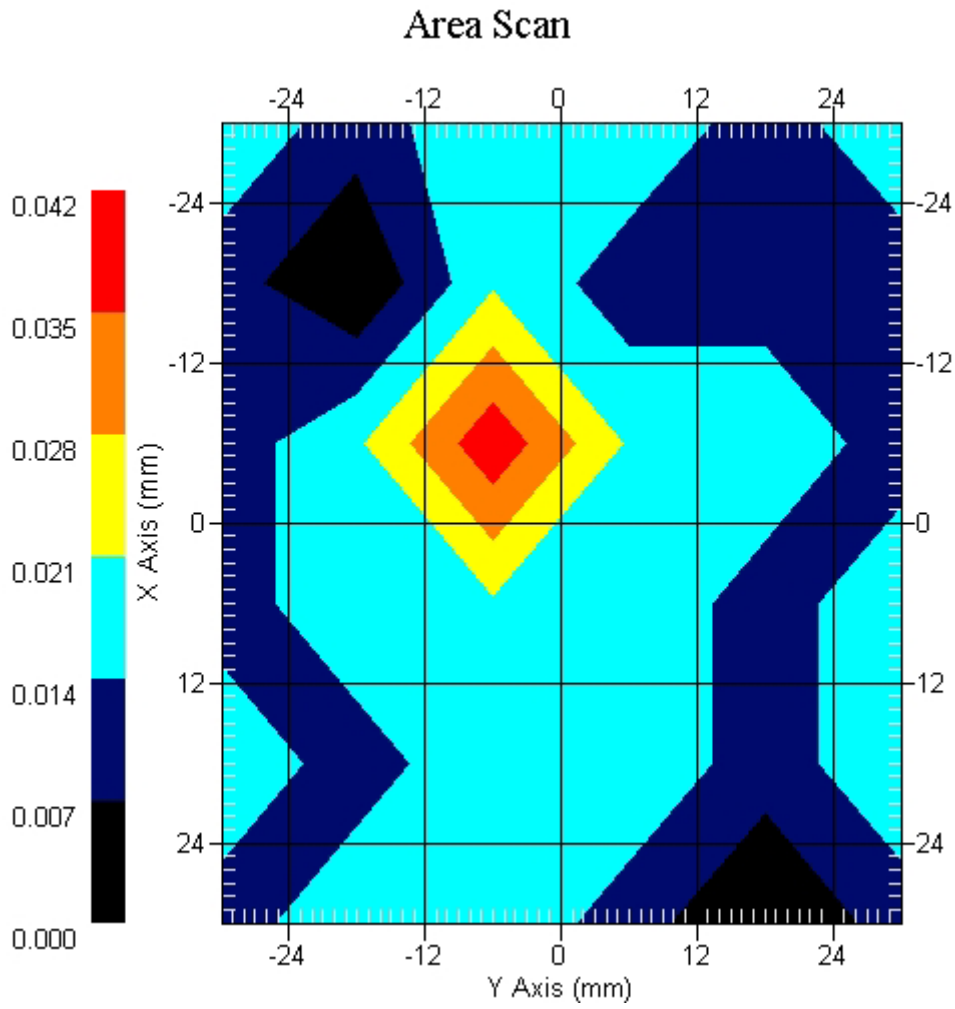
Crest Factor : 1
Tissue Temp. : 21.10 °C
Ambient Temp. : 22.90 °C
Area Scan : 6x6x1 : Measurement x=12mm, y=12mm, z=4mm
Zoom Scan : 7x7x7 : Measurement x=5mm, y=5mm, z=5mm
Power Drift-Start : 0.016 W/kg
Power Drift-Finish: 0.016 W/kg
Power Drift (%) : 0.773

DUT Position : Touch
Channel : 11



1 gram SAR value : 0.050 W/kg
10 gram SAR value : 0.028 W/kg
Area Scan Peak SAR : 0.054 W/kg
Zoom Scan Peak SAR : 0.095 W/kg

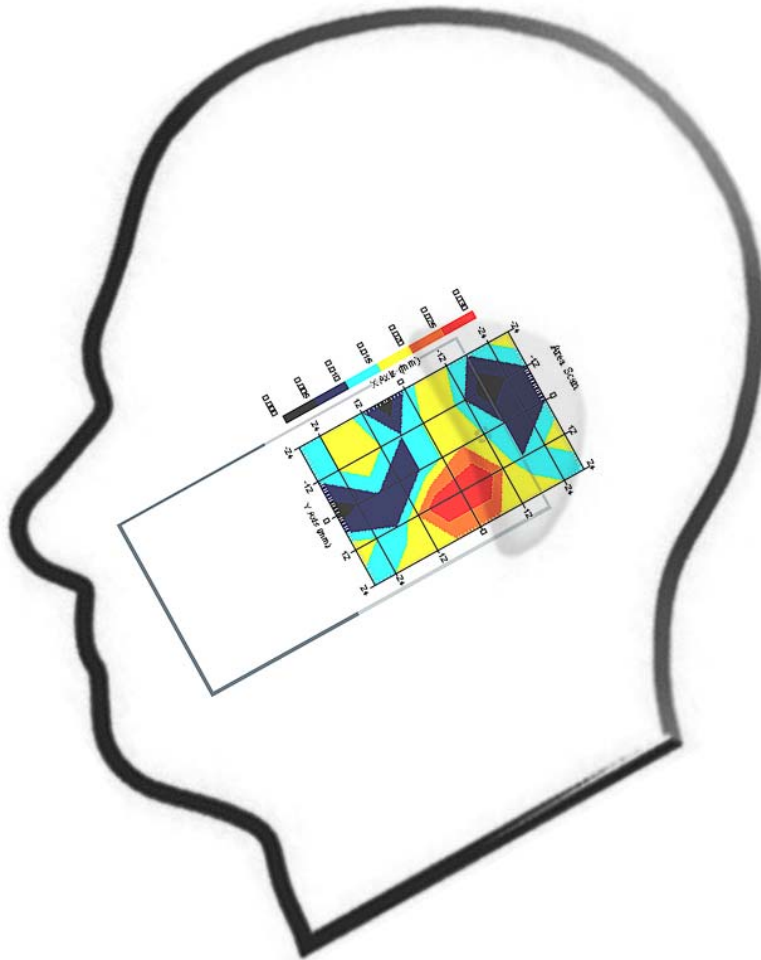
This is previous page plot (zoom in)



Measurement Data

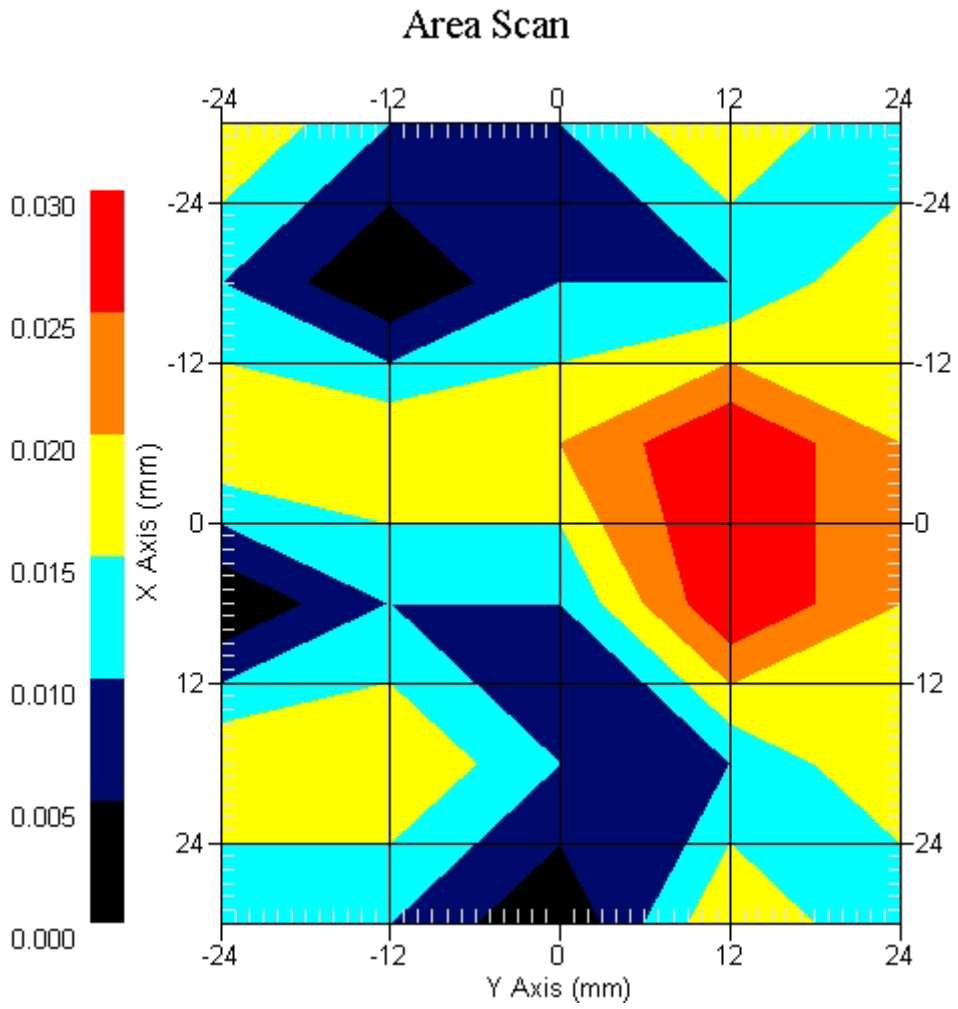
Crest Factor : 1
Tissue Temp. : 21.10 °C
Ambient Temp. : 22.90 °C
Area Scan : 6x5x1 : Measurement x=12mm, y=12mm, z=4mm
Zoom Scan : 7x7x7 : Measurement x=5mm, y=5mm, z=5mm
Power Drift-Start : 0.022 W/kg
Power Drift-Finish: 0.021 W/kg
Power Drift (%) : -3.175

DUT Position : 15° Tilt
Channel : 1



1 gram SAR value : 0.029 W/kg
10 gram SAR value : 0.018 W/kg
Area Scan Peak SAR : 0.030 W/kg
Zoom Scan Peak SAR : 0.058 W/kg

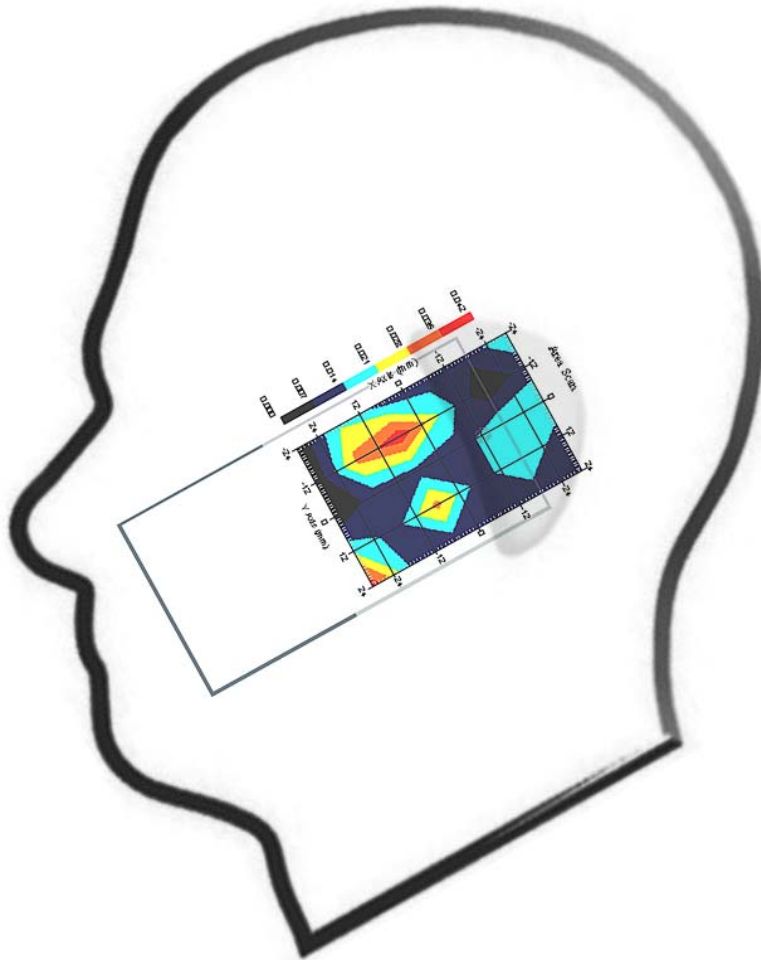
This is previous page plot (zoom in)



Measurement Data

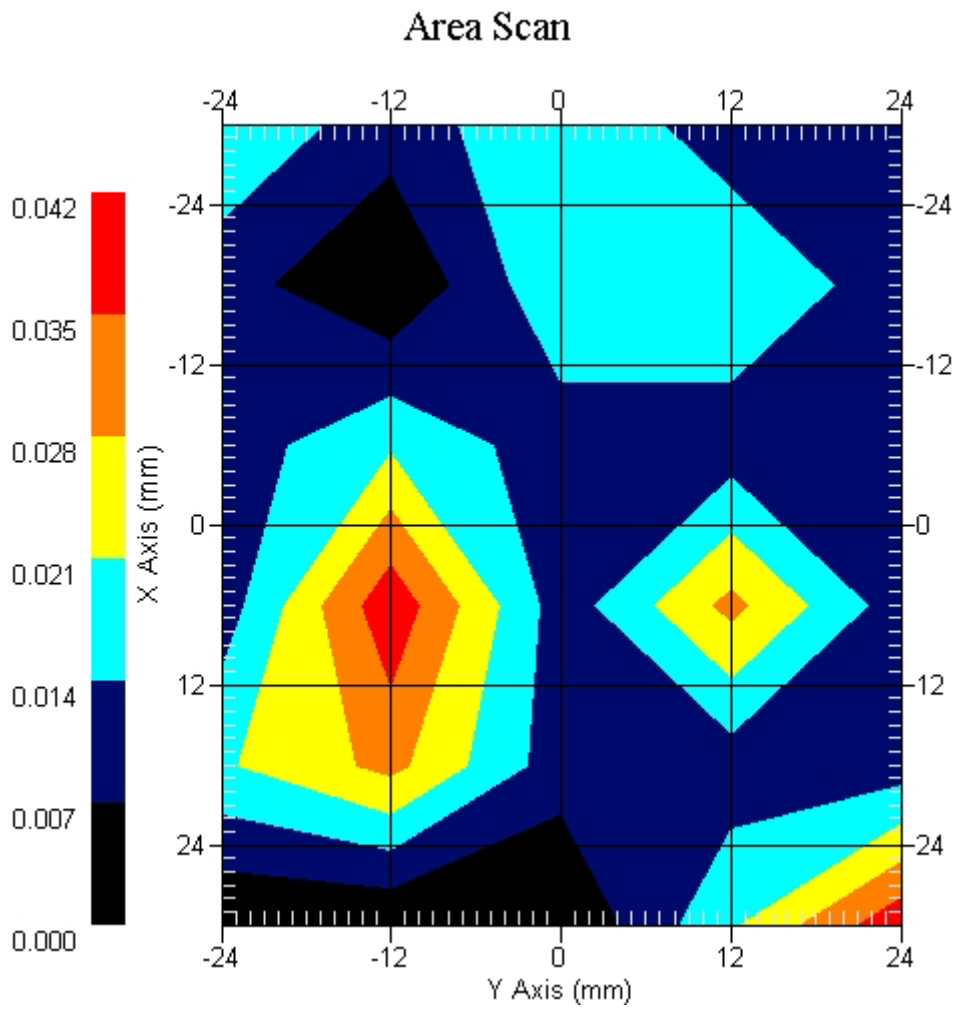
Crest Factor : 1
Tissue Temp. : 21.10 °C
Ambient Temp. : 22.90 °C
Area Scan : 6x5x1 : Measurement x=12mm, y=12mm, z=4mm
Zoom Scan : 7x7x7 : Measurement x=5mm, y=5mm, z=5mm
Power Drift-Start : 0.014 W/kg
Power Drift-Finish: 0.014 W/kg
Power Drift (%) : -0.201

DUT Position : 15° Tilt
Channel : 6



1 gram SAR value : 0.038 W/kg
10 gram SAR value : 0.028 W/kg
Area Scan Peak SAR : 0.040 W/kg
Zoom Scan Peak SAR : 0.061 W/kg

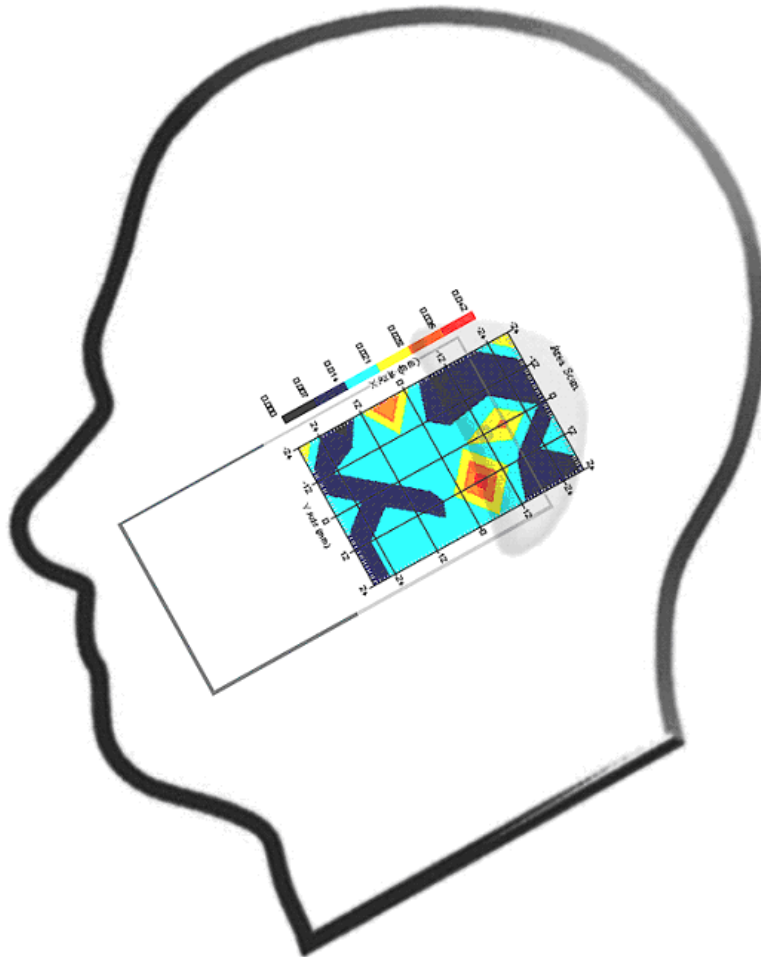
This is previous page plot (zoom in)



Measurement Data

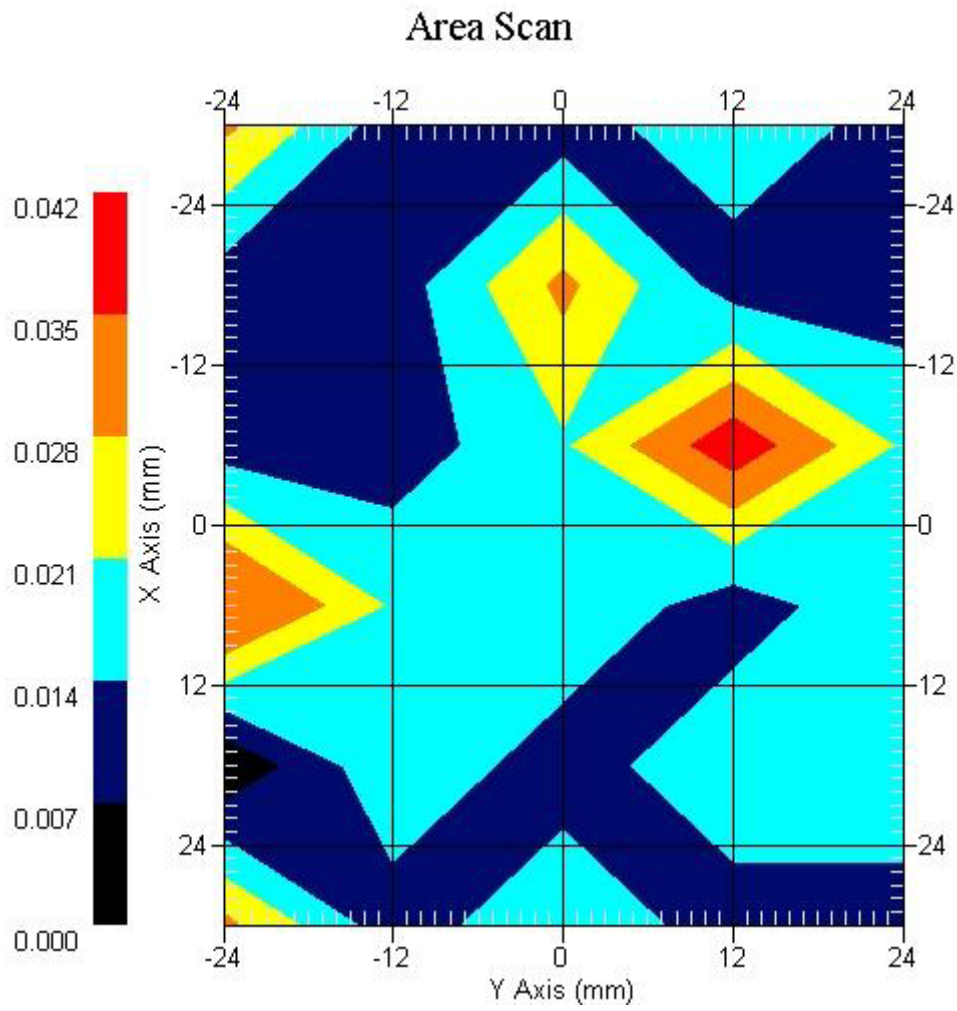
Crest Factor : 1
Tissue Temp. : 21.10 °C
Ambient Temp. : 22.90 °C
Area Scan : 6x5x1 : Measurement x=12mm, y=12mm, z=4mm
Zoom Scan : 7x7x7 : Measurement x=5mm, y=5mm, z=5mm
Power Drift-Start : 0.025 W/kg
Power Drift-Finish: 0.025 W/kg
Power Drift (%) : -0.581

DUT Position : 15° Tilt
Channel : 11



1 gram SAR value : 0.037 W/kg
10 gram SAR value : 0.026 W/kg
Area Scan Peak SAR : 0.040 W/kg
Zoom Scan Peak SAR : 0.063 W/kg

This is previous page plot (zoom in)



ALSAS-10U VER 2.3.6 APREL Laboratories
SAR Test ReportReport Date : 29-Apr-2008
Measurement Date : 29-Apr-2008

Product Data

Device Name : GIGA
Type : Std Form Cell Phone
Model : Atom V
Frequency : 2450.00 MHz
Drift Time : 0 min(s)
Length : 116.1 mm
Width : 59.5 mm
Depth : 15.5 mm
Antenna Type : Internal

Phantom Data

Type : Uni-Phantom
Size (mm) : 280 x 280 x 200
Location : Center

Tissue Data

Type : BODY
Serial No. : 325-B
Frequency : 2450.00 MHz
Last Calib. Date : 29-Apr-2008
Temperature : 21.10 °C
Ambient Temp. : 22.90 °C
Humidity : 48.00 RH%
Epsilon : 53.16 F/m
Sigma : 1.79 S/m
Density : 1000.00 kg/cu. m

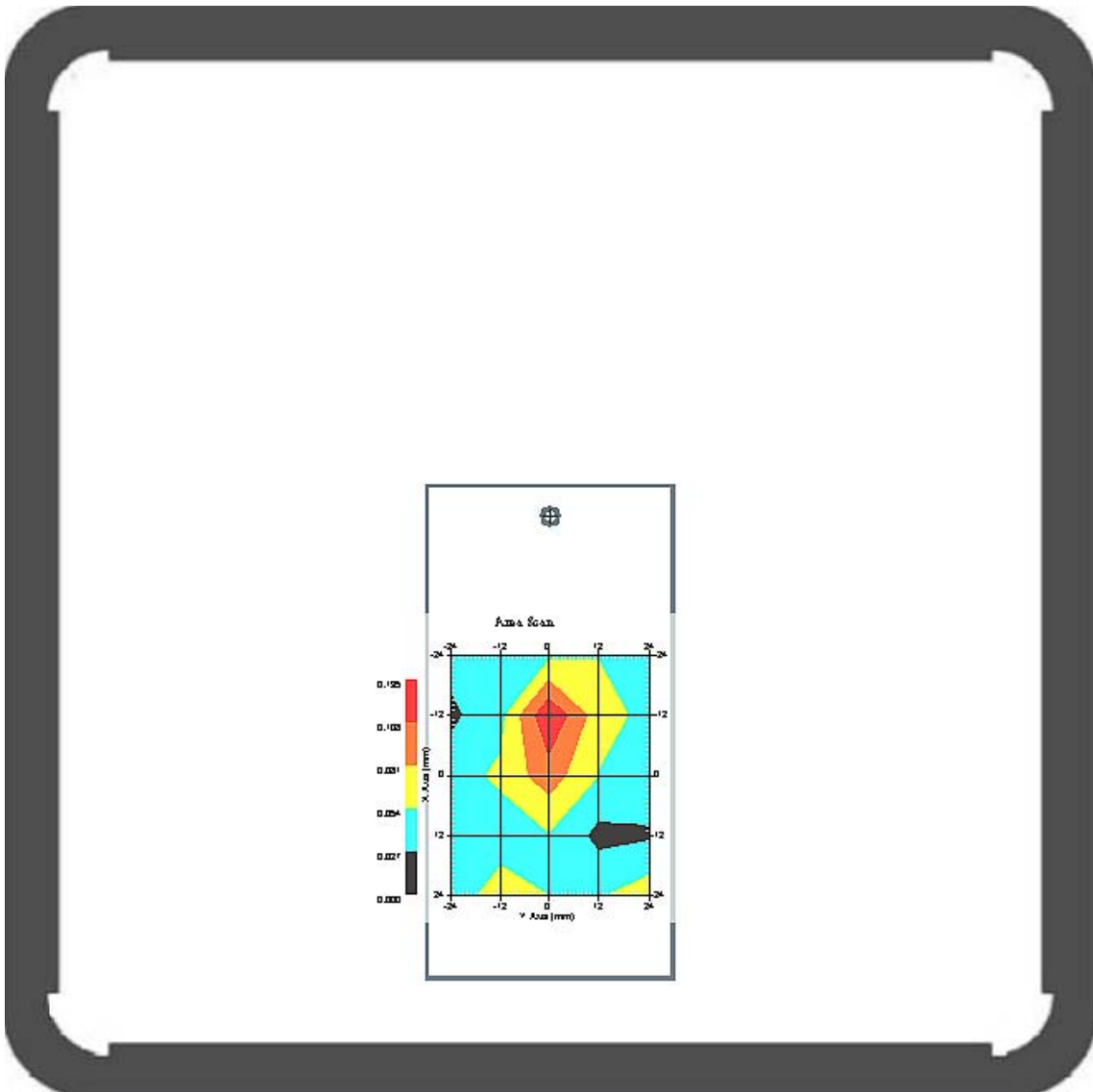
Probe Data

Name : Probe 264
Model : E020
Type : E-Field Triangle
Serial No. : 264
Last Calib. Date : 21-Aug-2007
Frequency : 2450.00 MHz
Duty Cycle Factor: 1
Conversion Factor: 5.2
Probe Sensitivity: 1.20 1.20 1.20 $\mu\text{V}/(\text{V}/\text{m})^2$
Compression Point: 95.00 mV
Offset : 1.56 mm

Measurement Data

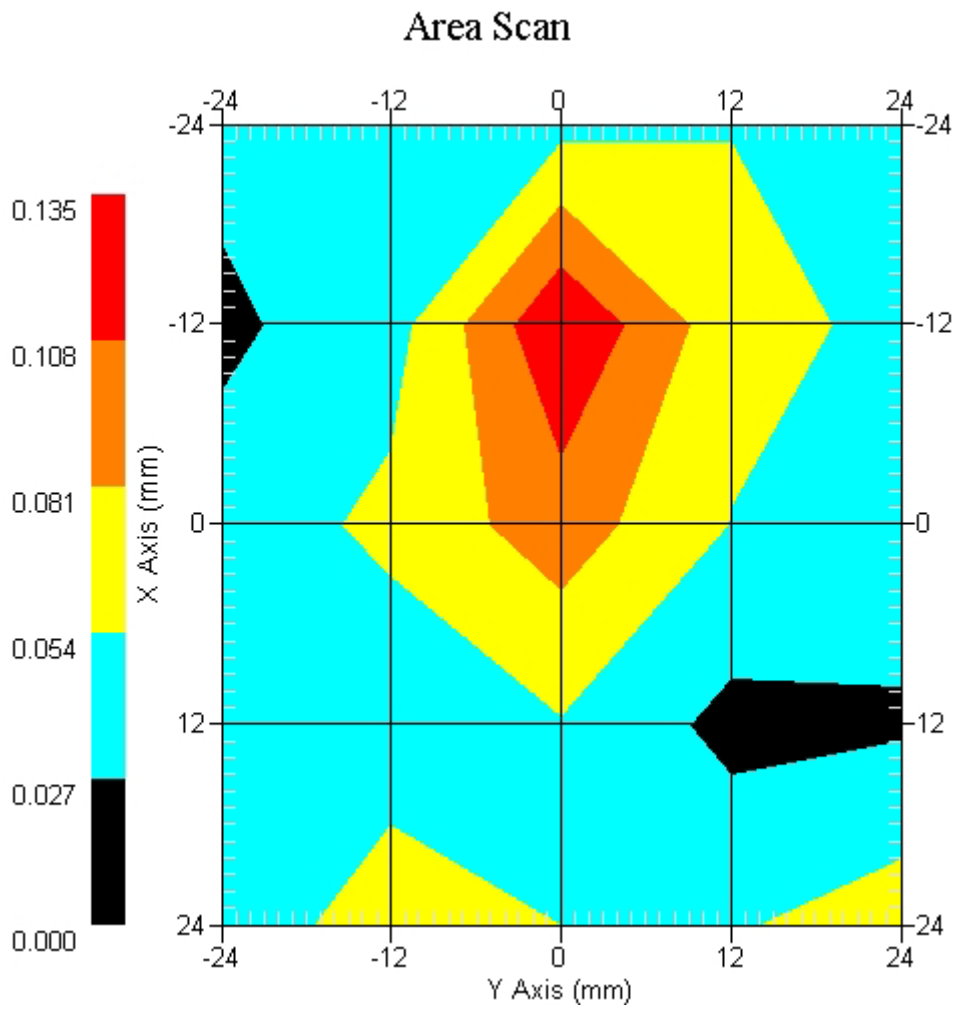
Crest Factor : 1
Tissue Temp. : 21.10 °C
Ambient Temp. : 22.90 °C
Area Scan : 5x5x1 : Measurement x=12mm, y=12mm, z=4mm
Zoom Scan : 7x7x7 : Measurement x=5mm, y=5mm, z=5mm
Power Drift-Start : 0.144 W/kg
Power Drift-Finish: 0.142 W/kg
Power Drift (%) : -0.694

DUT Position : Touch
Channel : 1



1 gram SAR value : 0.122 W/kg
10 gram SAR value : 0.086 W/kg
Area Scan Peak SAR : 0.133 W/kg
Zoom Scan Peak SAR : 0.167 W/kg

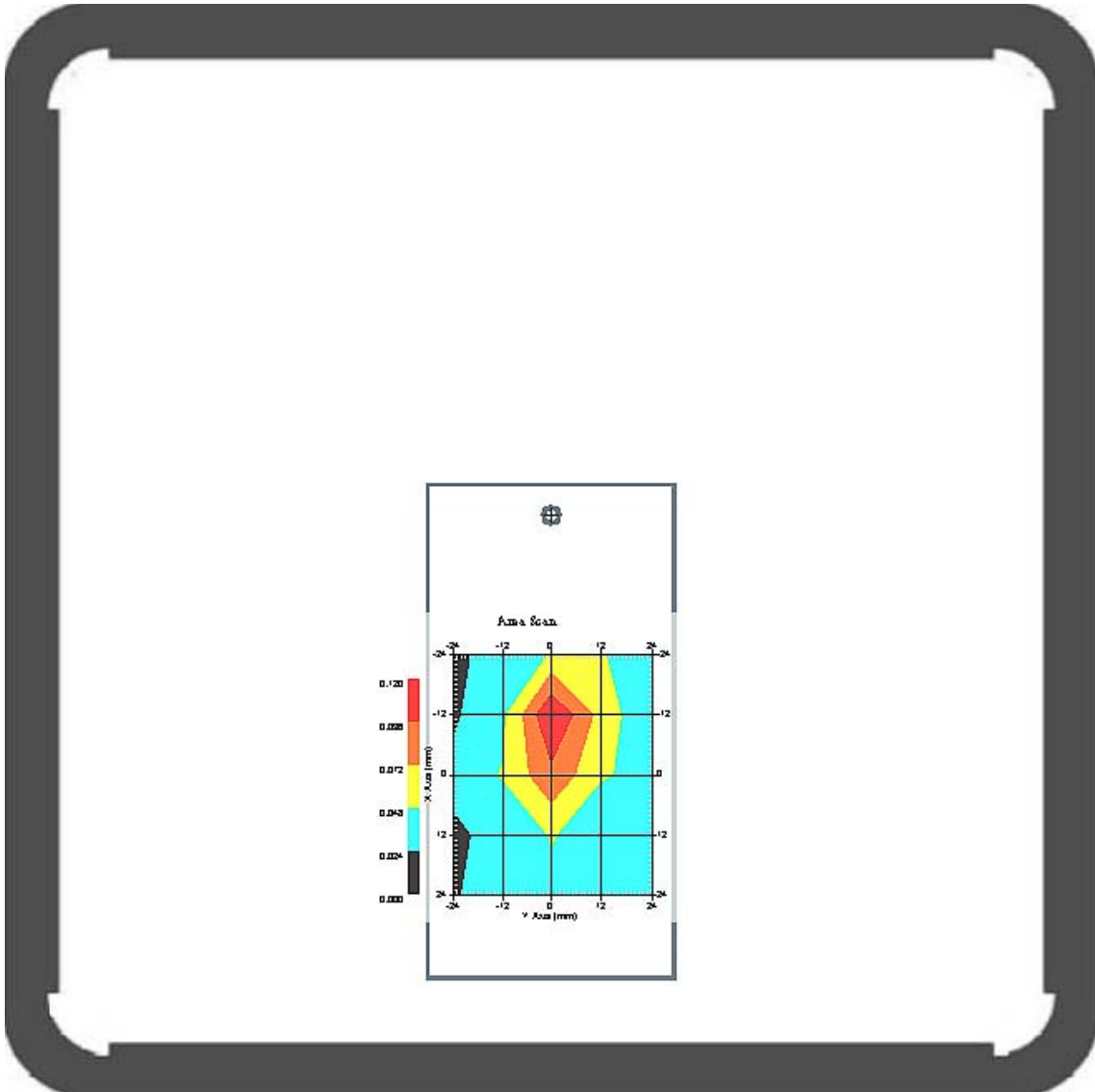
This is previous page plot (zoom in)



Measurement Data

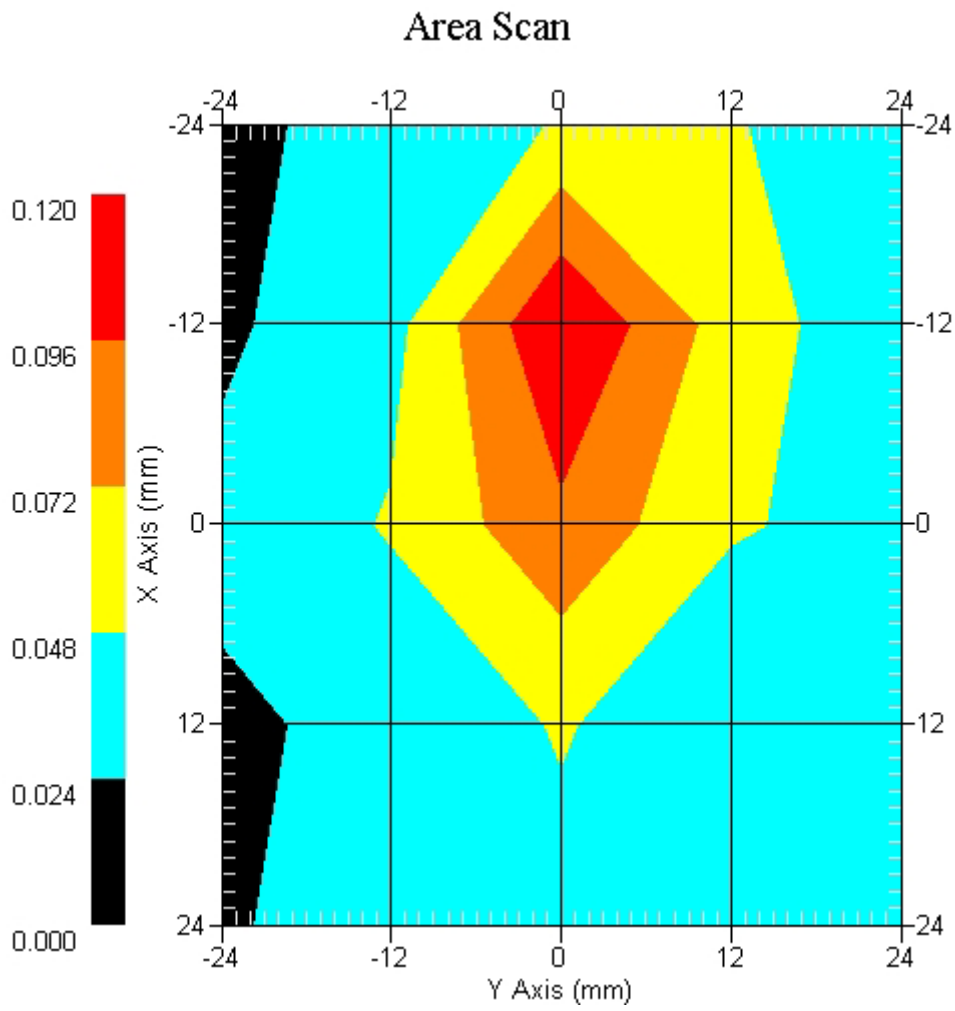
Crest Factor : 1
Tissue Temp. : 21.10 °C
Ambient Temp. : 22.90 °C
Area Scan : 5x5x1 : Measurement x=12mm, y=12mm, z=4mm
Zoom Scan : 7x7x7 : Measurement x=5mm, y=5mm, z=5mm
Power Drift-Start : 0.125 W/kg
Power Drift-Finish: 0.129 W/kg
Power Drift (%) : 3.200

DUT Position : Touch
Channel : 6



1 gram SAR value : 0.113 W/kg
10 gram SAR value : 0.081 W/kg
Area Scan Peak SAR : 0.120 W/kg
Zoom Scan Peak SAR : 0.192 W/kg

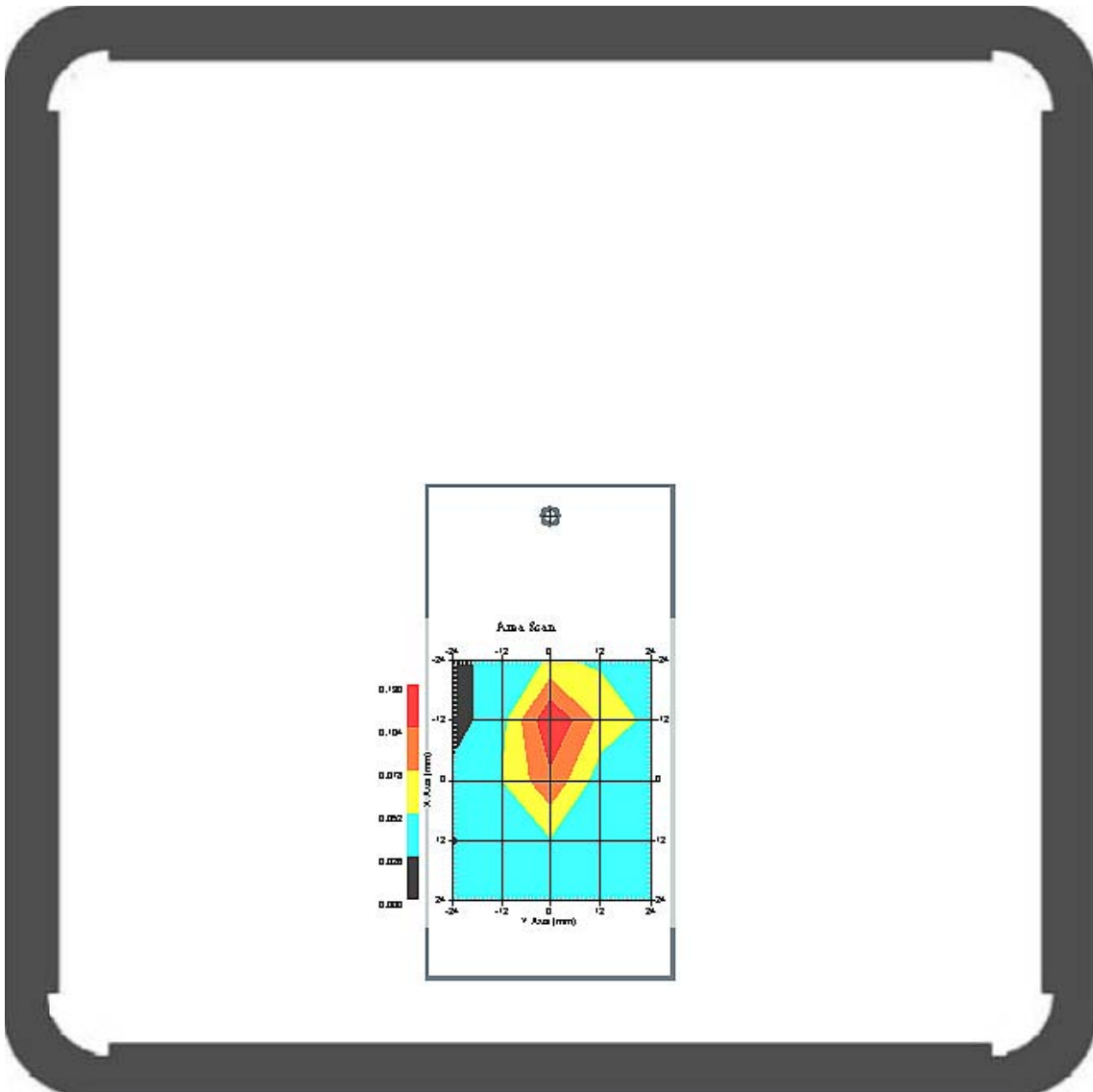
This is previous page plot (zoom in)



Measurement Data

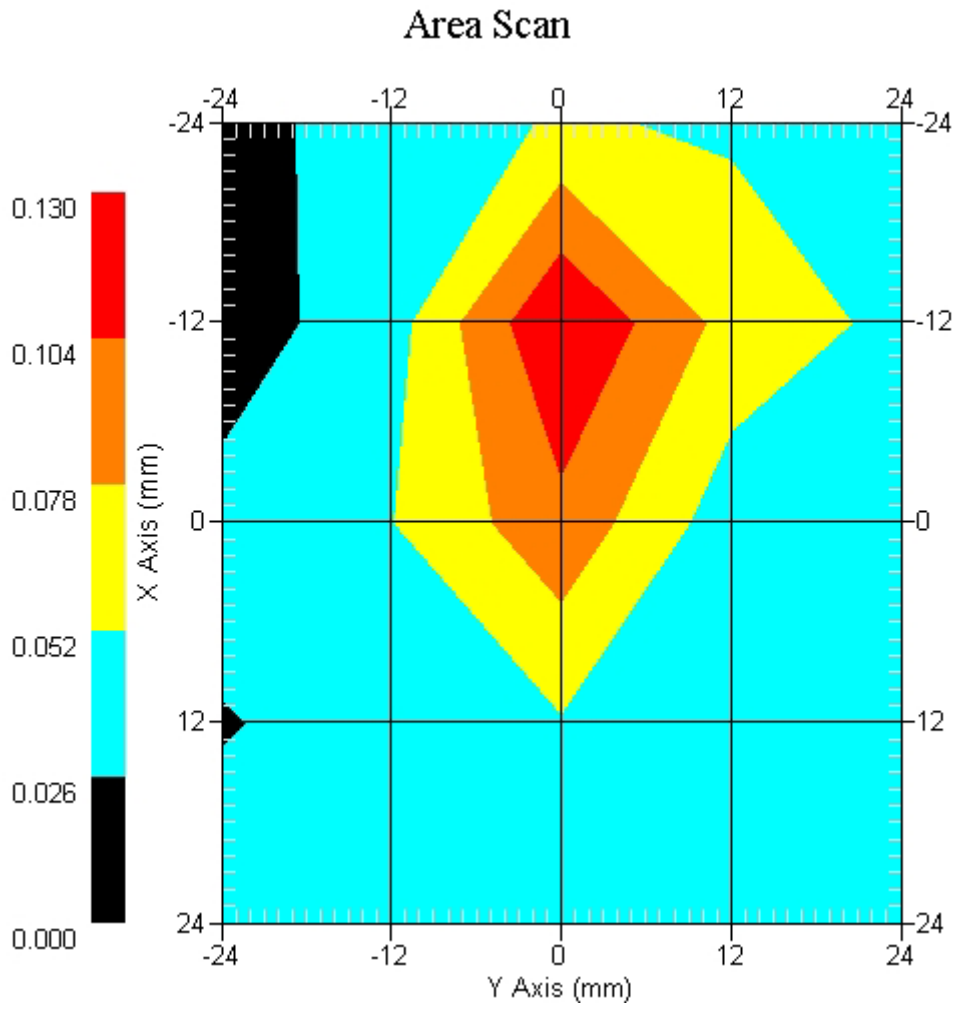
Crest Factor : 1
Tissue Temp. : 21.10 °C
Ambient Temp. : 22.90 °C
Area Scan : 5x5x1 : Measurement x=12mm, y=12mm, z=4mm
Zoom Scan : 7x7x7 : Measurement x=5mm, y=5mm, z=5mm
Power Drift-Start : 0.044 W/kg
Power Drift-Finish: 0.044 W/kg
Power Drift (%) : -0.014

DUT Position : Touch
Channel : 11

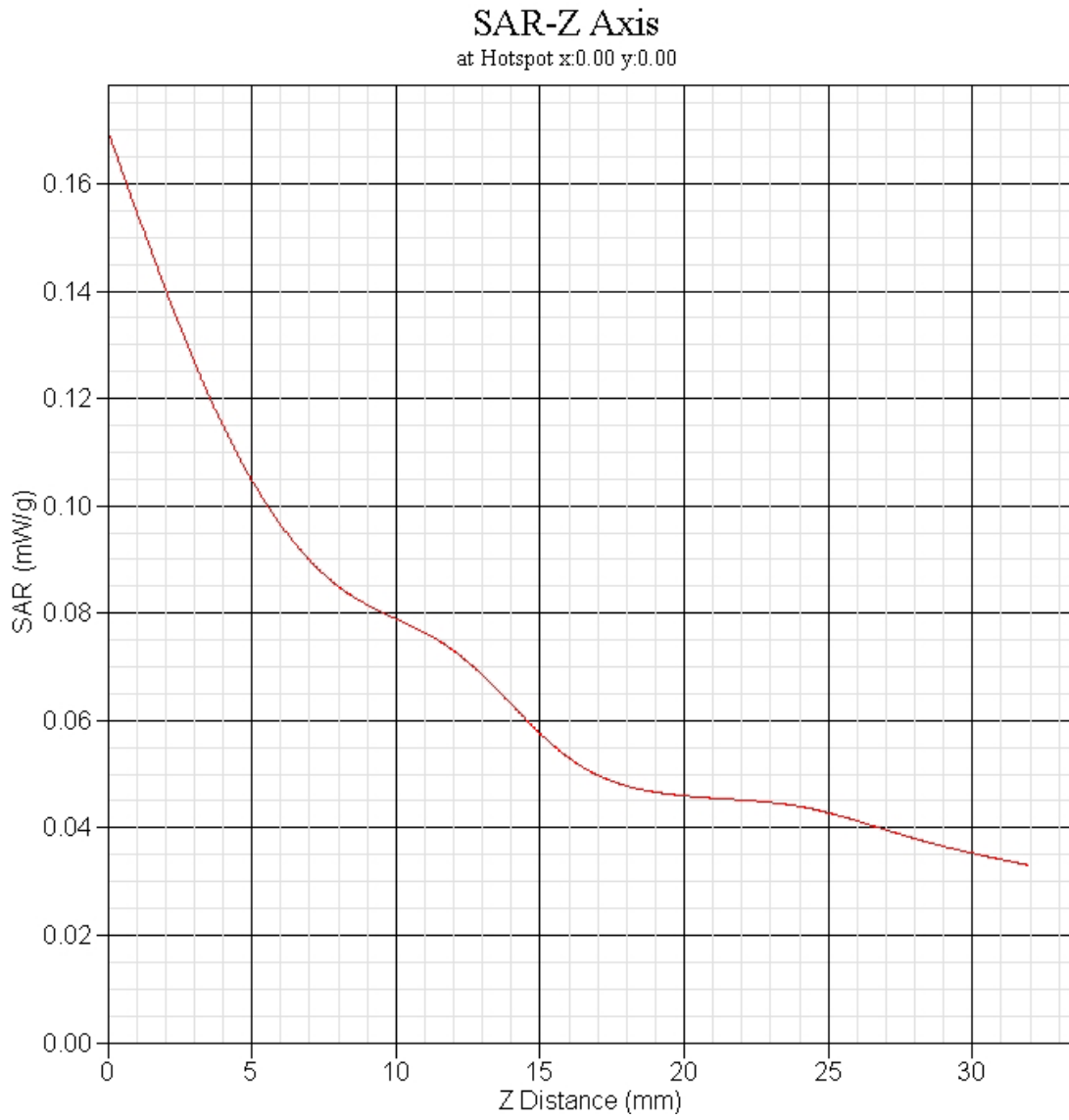


1 gram SAR value : 0.095 W/kg
10 gram SAR value : 0.056 W/kg
Area Scan Peak SAR : 0.130 W/kg
Zoom Scan Peak SAR : 0.180 W/kg

This is previous page plot (zoom in)



802.11b EUT Body-worn Z-Axis plot
Channel: 1



SAR measurement Data

ALSAS-10U VER 2.3.6 APREL Laboratories

SAR Test Report-802.11g

Report Date : 29-Apr-2008
Measurement Date : 29-Apr-2008

Product Data

Device Name : GIGA
Type : Std Form Cell Phone
Model : Atom V
Frequency : 2450.00 MHz
Drift Time : 0 min(s)
Length : 116.1 mm
Width : 59.5 mm
Depth : 15.5 mm
Antenna Type : Internal

Phantom Data

Type : SAM-Left
Size (mm) : 280 x 280 x 280
Location : Left

Tissue Data

Type : HEAD
Serial No. : 325-H
Frequency : 2450.00 MHz
Last Calib. Date : 29-Apr-2008
Temperature : 21.10 °C
Ambient Temp. : 22.90 °C
Humidity : 48.00 RH%
Epsilon : 40.55 F/m
Sigma : 1.84 S/m
Density : 1000.00 kg/cu. m

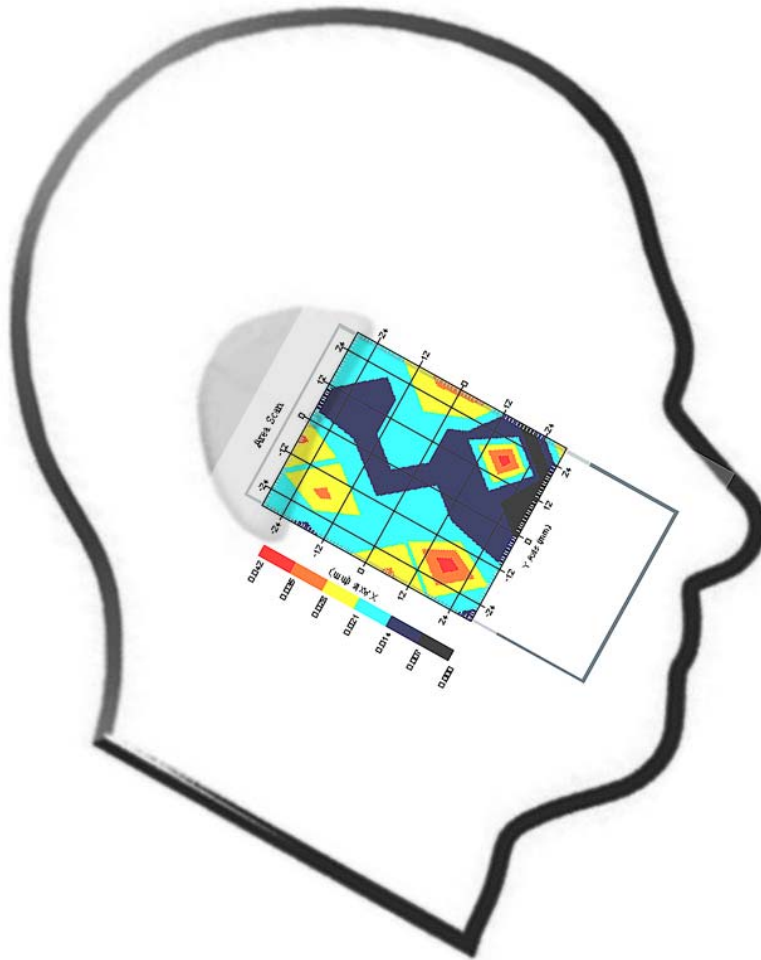
Probe Data

Name : Probe 264
Model : E020
Type : E-Field Triangle
Serial No. : 264
Last Calib. Date : 20-Aug-2007
Frequency : 2450.00 MHz
Duty Cycle Factor: 1
Conversion Factor: 5
Probe Sensitivity: 1.20 1.20 1.20 $\mu\text{V}/(\text{V}/\text{m})^2$
Compression Point: 95.00 mV
Offset : 1.56 mm

Measurement Data

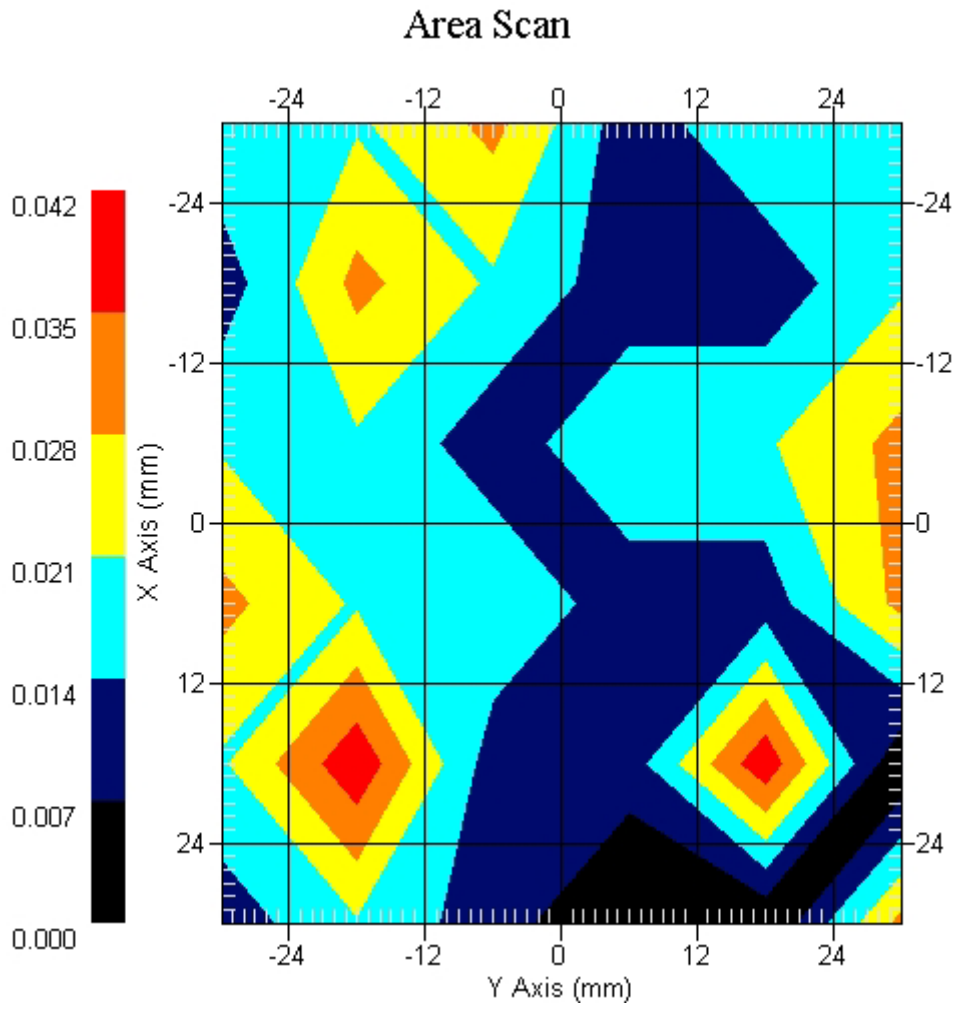
Crest Factor : 1
Tissue Temp. : 21.10 °C
Ambient Temp. : 22.90 °C
Area Scan : 6x6x1 : Measurement x=12mm, y=12mm, z=4mm
Zoom Scan : 7x7x7 : Measurement x=5mm, y=5mm, z=5mm
Power Drift-Start : 0.047 W/kg
Power Drift-Finish: 0.048 W/kg
Power Drift (%) : 2.127

DUT Position : Touch
Channel : 1



1 gram SAR value : 0.035 W/kg
10 gram SAR value : 0.029 W/kg
Area Scan Peak SAR : 0.039 W/kg
Zoom Scan Peak SAR : 0.062 W/kg

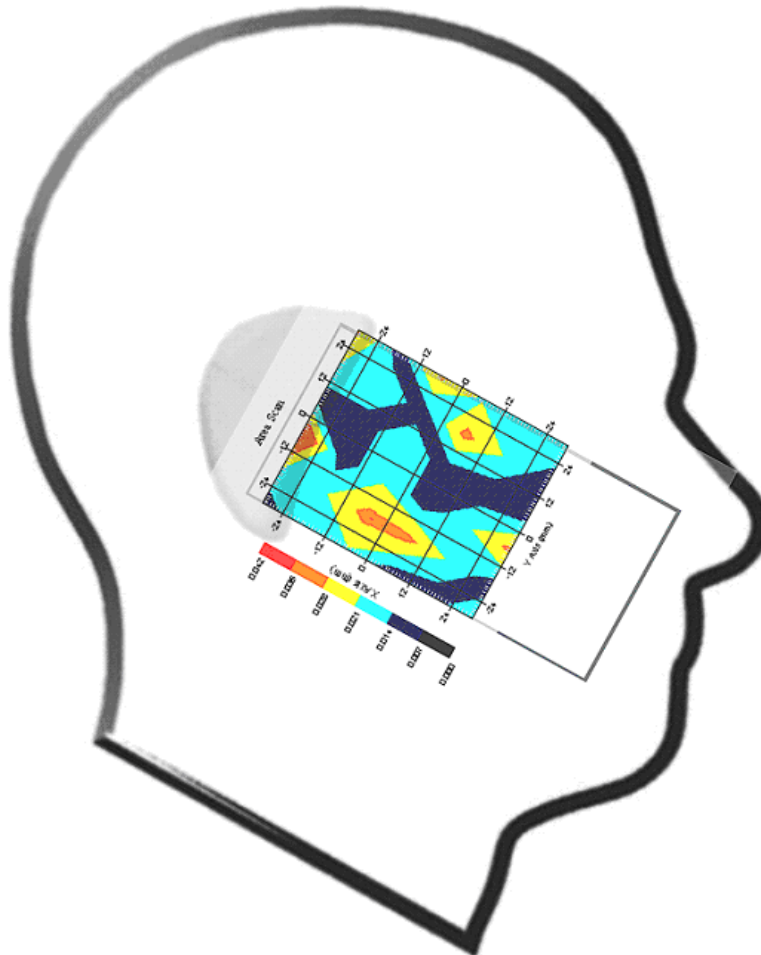
This is previous page plot (zoom in)



Measurement Data

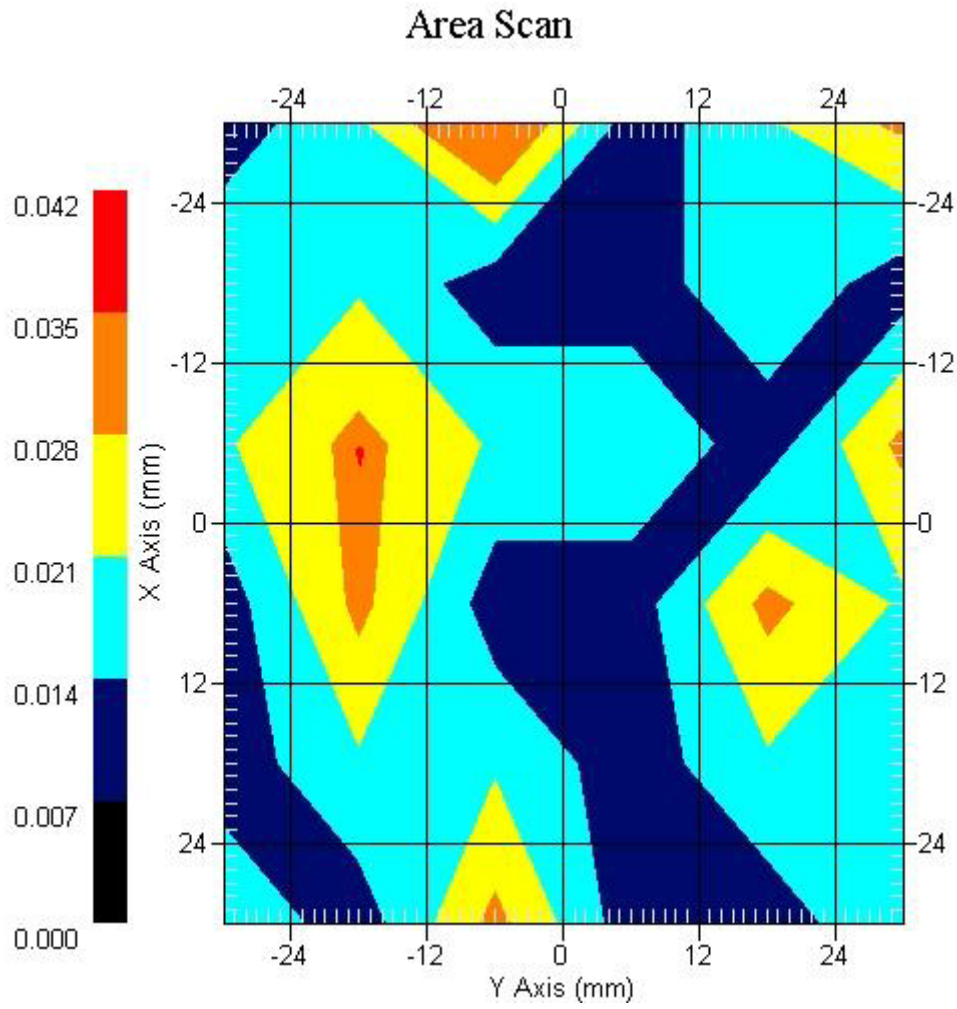
Crest Factor : 1
Tissue Temp. : 21.10 °C
Ambient Temp. : 22.90 °C
Area Scan : 6x6x1 : Measurement x=12mm, y=12mm, z=4mm
Zoom Scan : 7x7x7 : Measurement x=5mm, y=5mm, z=5mm
Power Drift-Start : 0.034 W/kg
Power Drift-Finish: 0.035 W/kg
Power Drift (%) : 2.941

DUT Position : Touch
Channel : 6



1 gram SAR value : 0.038 W/kg
10 gram SAR value : 0.032 W/kg
Area Scan Peak SAR : 0.040 W/kg
Zoom Scan Peak SAR : 0.058 W/kg

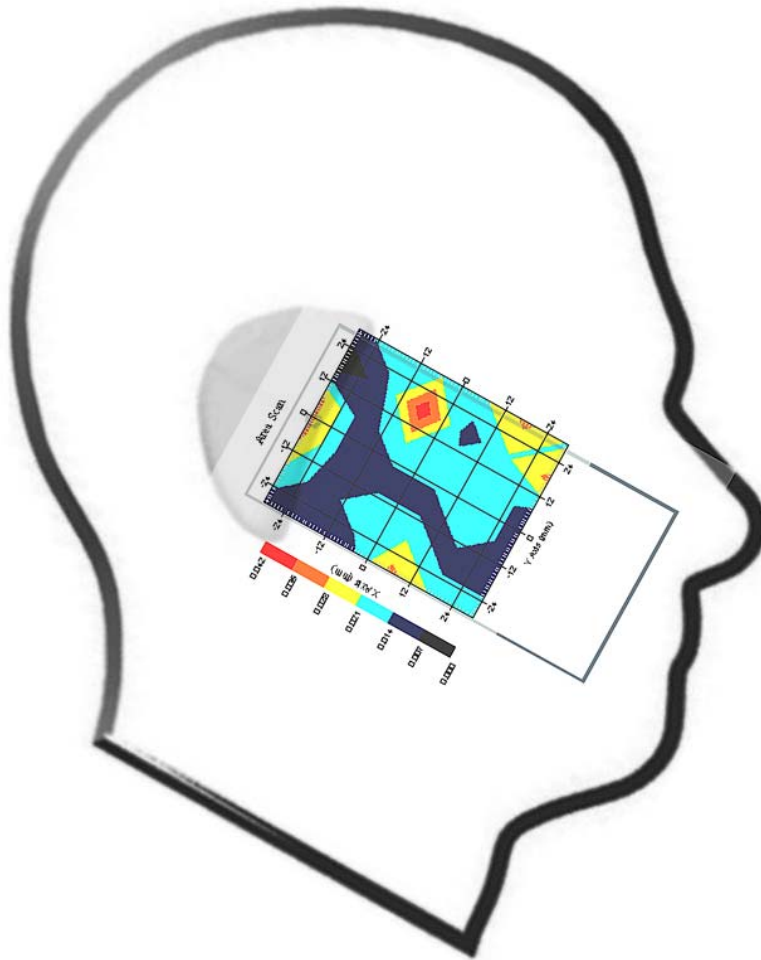
This is previous page plot (zoom in)



Measurement Data

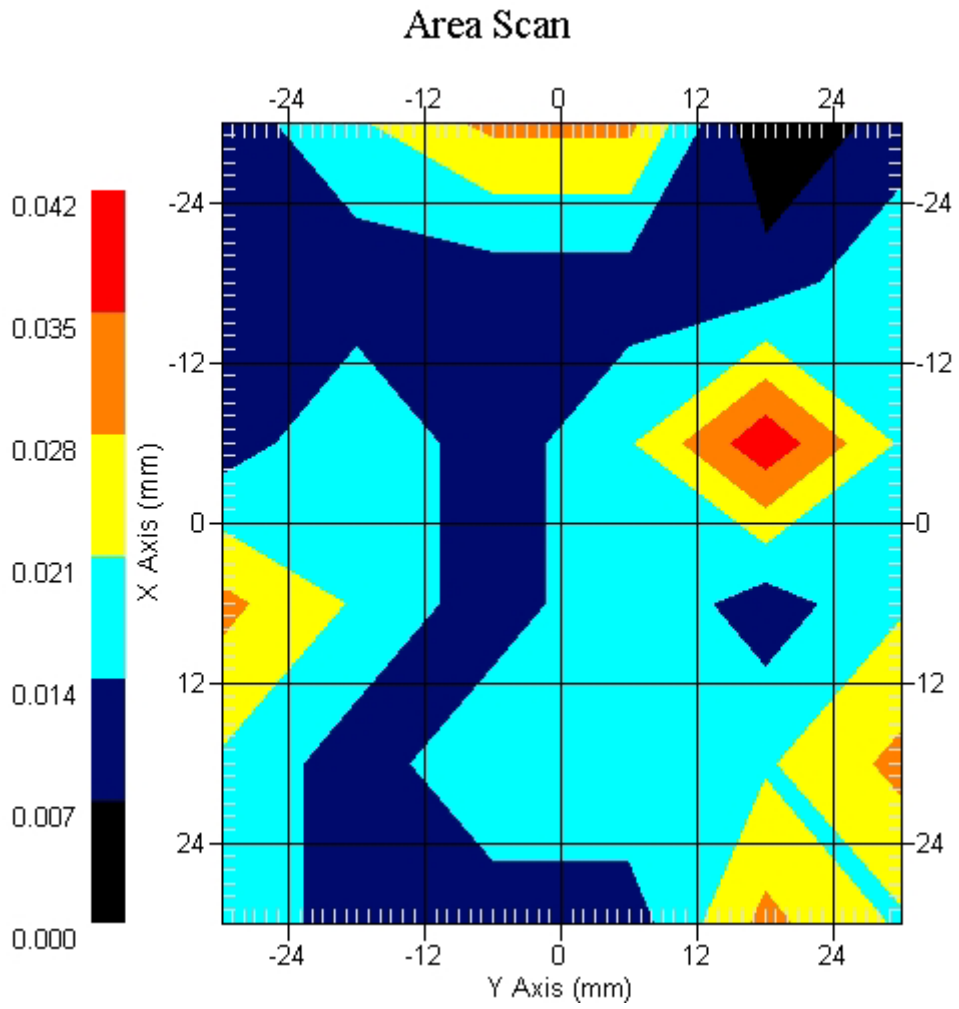
Crest Factor : 1
Tissue Temp. : 21.10 °C
Ambient Temp. : 22.90 °C
Area Scan : 6x6x1 : Measurement x=12mm, y=12mm, z=4mm
Zoom Scan : 7x7x7 : Measurement x=5mm, y=5mm, z=5mm
Power Drift-Start : 0.037 W/kg
Power Drift-Finish: 0.036 W/kg
Power Drift (%) : -2.702

DUT Position : Touch
Channel : 11



1 gram SAR value : 0.035 W/kg
10 gram SAR value : 0.027 W/kg
Area Scan Peak SAR : 0.040 W/kg
Zoom Scan Peak SAR : 0.063 W/kg

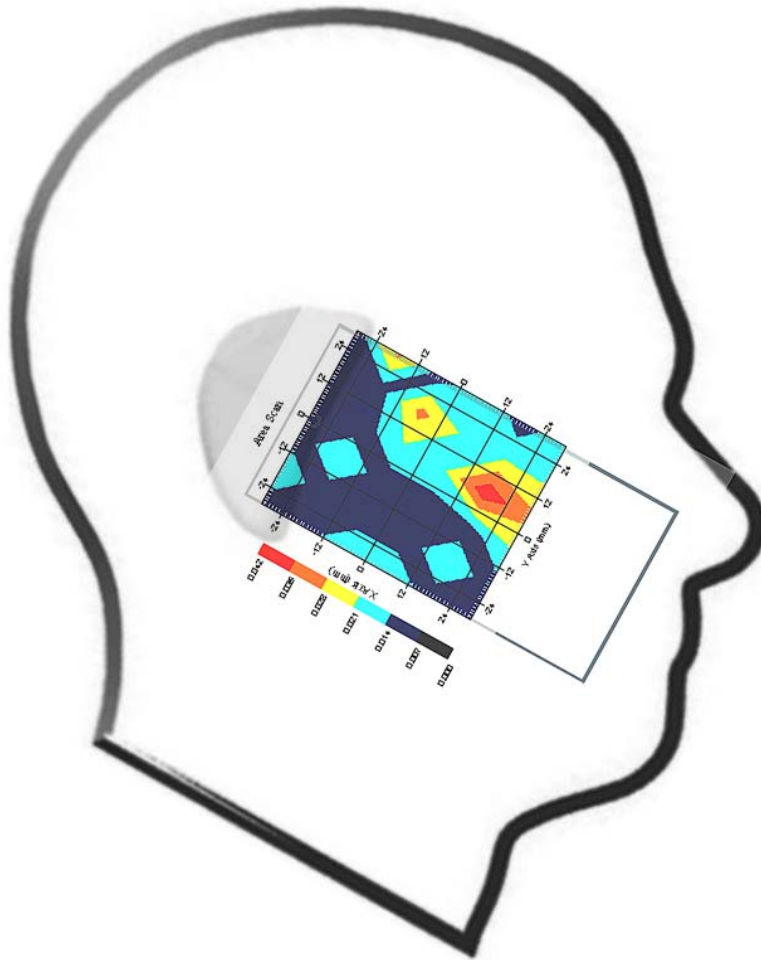
This is previous page plot (zoom in)



Measurement Data

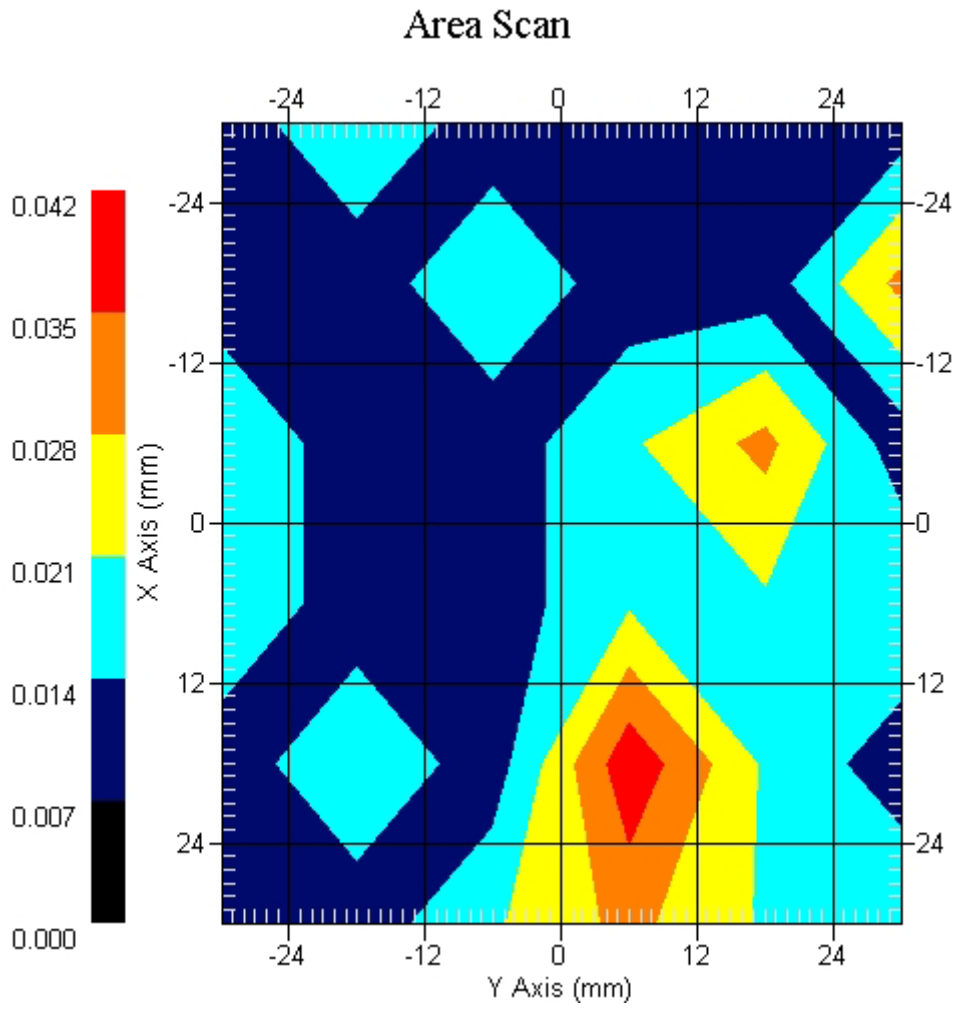
Crest Factor : 1
Tissue Temp. : 21.10 °C
Ambient Temp. : 22.90 °C
Area Scan : 6x6x1 : Measurement x=12mm, y=12mm, z=4mm
Zoom Scan : 7x7x7 : Measurement x=5mm, y=5mm, z=5mm
Power Drift-Start : 0.019 W/kg
Power Drift-Finish: 0.019 W/kg
Power Drift (%) : -0.988

DUT Position : 15° Tilt
Channel : 1



1 gram SAR value : 0.032 W/kg
10 gram SAR value : 0.024 W/kg
Area Scan Peak SAR : 0.038 W/kg
Zoom Scan Peak SAR : 0.057 W/kg

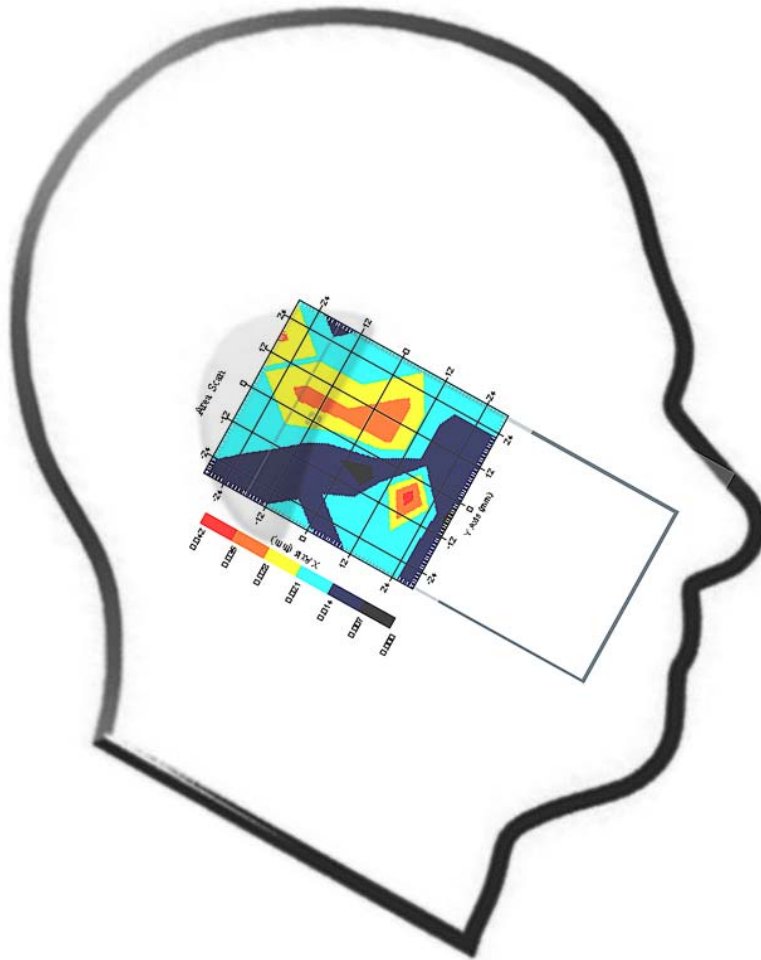
This is previous page plot (zoom in)



Measurement Data

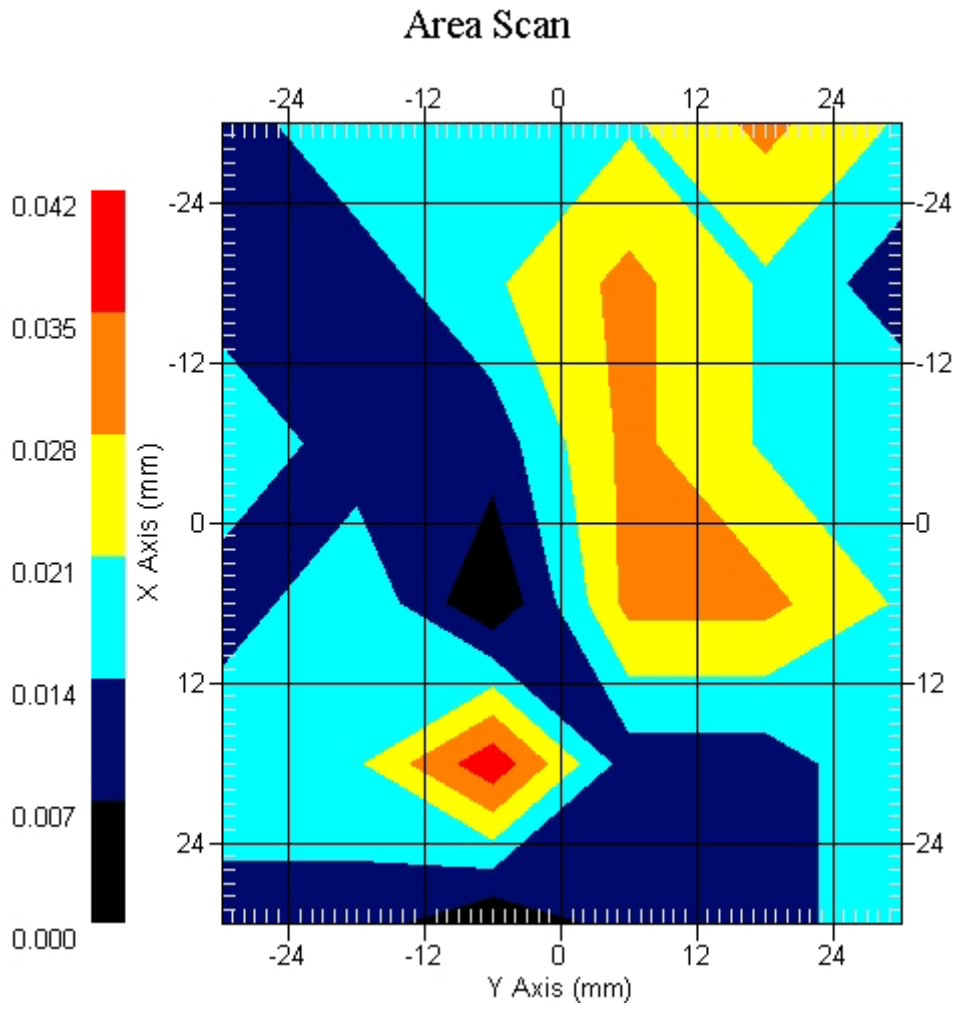
Crest Factor : 1
Tissue Temp. : 21.10 °C
Ambient Temp. : 22.90 °C
Area Scan : 6x6x1 : Measurement x=12mm, y=12mm, z=4mm
Zoom Scan : 7x7x7 : Measurement x=5mm, y=5mm, z=5mm .
Power Drift-Start : 0.019 W/kg
Power Drift-Finish: 0.019 W/kg
Power Drift (%) : 0.203

DUT Position : 15° Tilt
Channel : 6



1 gram SAR value : 0.036 W/kg
10 gram SAR value : 0.027 W/kg
Area Scan Peak SAR : 0.041 W/kg
Zoom Scan Peak SAR : 0.062 W/kg

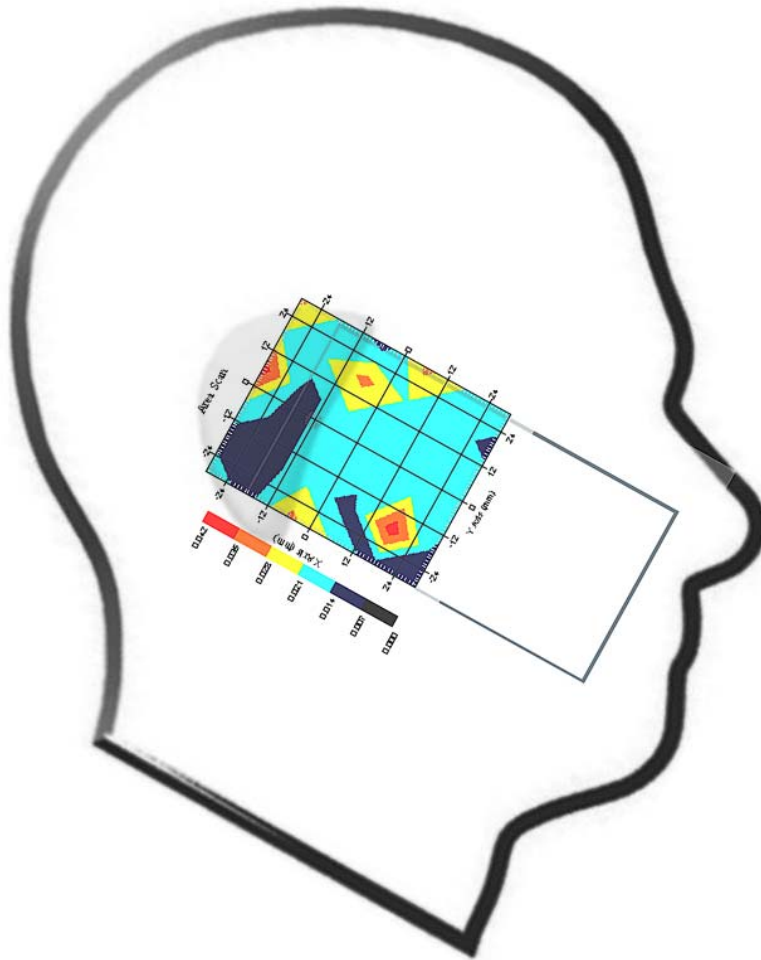
This is previous page plot (zoom in)



Measurement Data

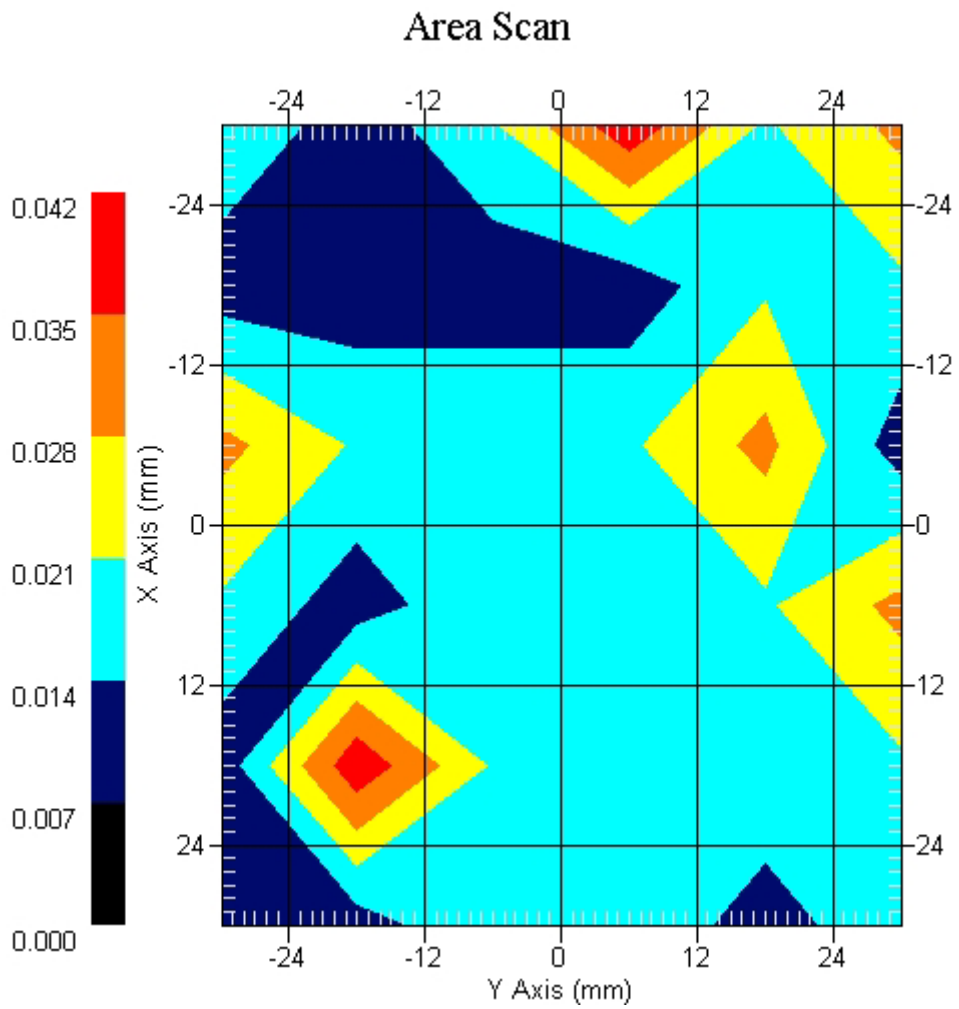
Crest Factor : 1
Tissue Temp. : 21.10 °C
Ambient Temp. : 22.90 °C
Area Scan : 6x6x1 : Measurement x=12mm, y=12mm, z=4mm
Zoom Scan : 7x7x7 : Measurement x=5mm, y=5mm, z=5mm
Power Drift-Start : 0.026 W/kg
Power Drift-Finish: 0.026 W/kg
Power Drift (%) : -0.158

DUT Position : 15° Tilt
Channel : 11



1 gram SAR value : 0.036 W/kg
10 gram SAR value : 0.031 W/kg
Area Scan Peak SAR : 0.036 W/kg
Zoom Scan Peak SAR : 0.073 W/kg

This is previous page plot (zoom in)



ALSAS-10U VER 2.3.6 APREL Laboratories

SAR Test Report

Report Date : 30-Apr-2008
Measurement Date : 30-Apr-2008

Product Data

Device Name : GIGA
Type : Std Form Cell Phone
Model : Atom V
Frequency : 2450.00 MHz
Drift Time : 0 min(s)
Length : 116.1 mm
Width : 59.5 mm
Depth : 15.5 mm
Antenna Type : Internal

Phantom Data

Type : SAM-Right
Size (mm) : 280 x 280 x 280
Location : Right

Tissue Data

Type : HEAD
Serial No. : 325-H
Frequency : 2450.00 MHz
Last Calib. Date : 30-Apr-2008
Temperature : 21.10 °C
Ambient Temp. : 22.90 °C
Humidity : 48.00 RH%
Epsilon : 40.55 F/m
Sigma : 1.84 S/m
Density : 1000.00 kg/cu. m

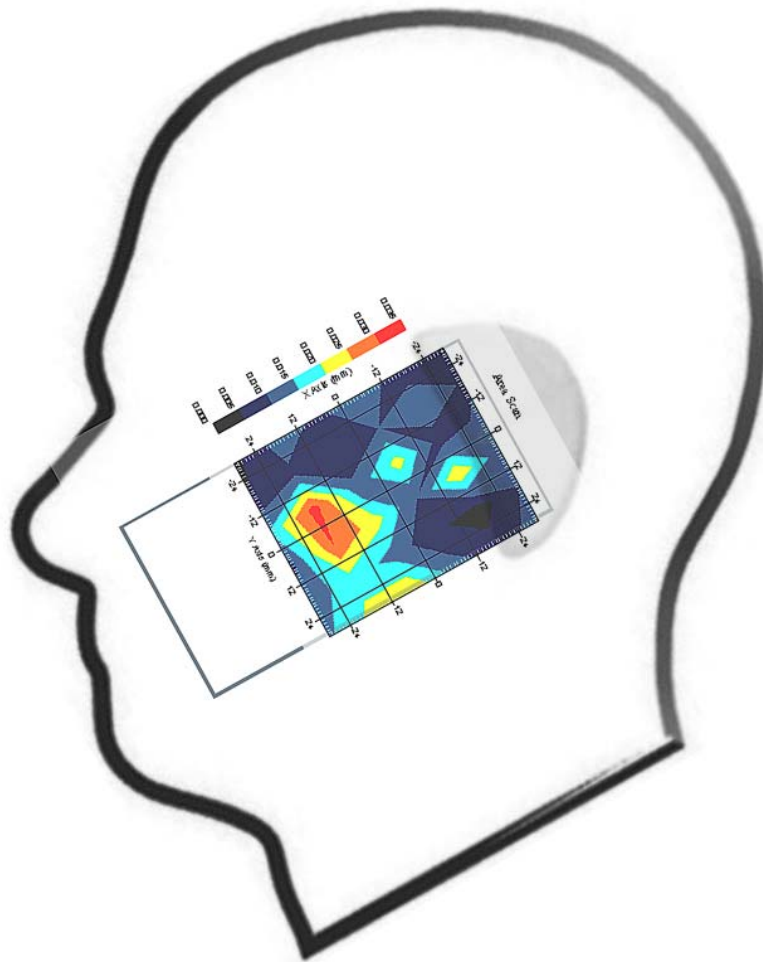
Probe Data

Name : Probe 264
Model : E020
Type : E-Field Triangle
Serial No. : 264
Last Calib. Date : 22-Aug-2007
Frequency : 2450.00 MHz
Duty Cycle Factor: 1
Conversion Factor: 5
Probe Sensitivity: 1.20 1.20 1.20 $\mu\text{V}/(\text{V}/\text{m})^2$
Compression Point: 95.00 mV
Offset : 1.56 mm

Measurement Data

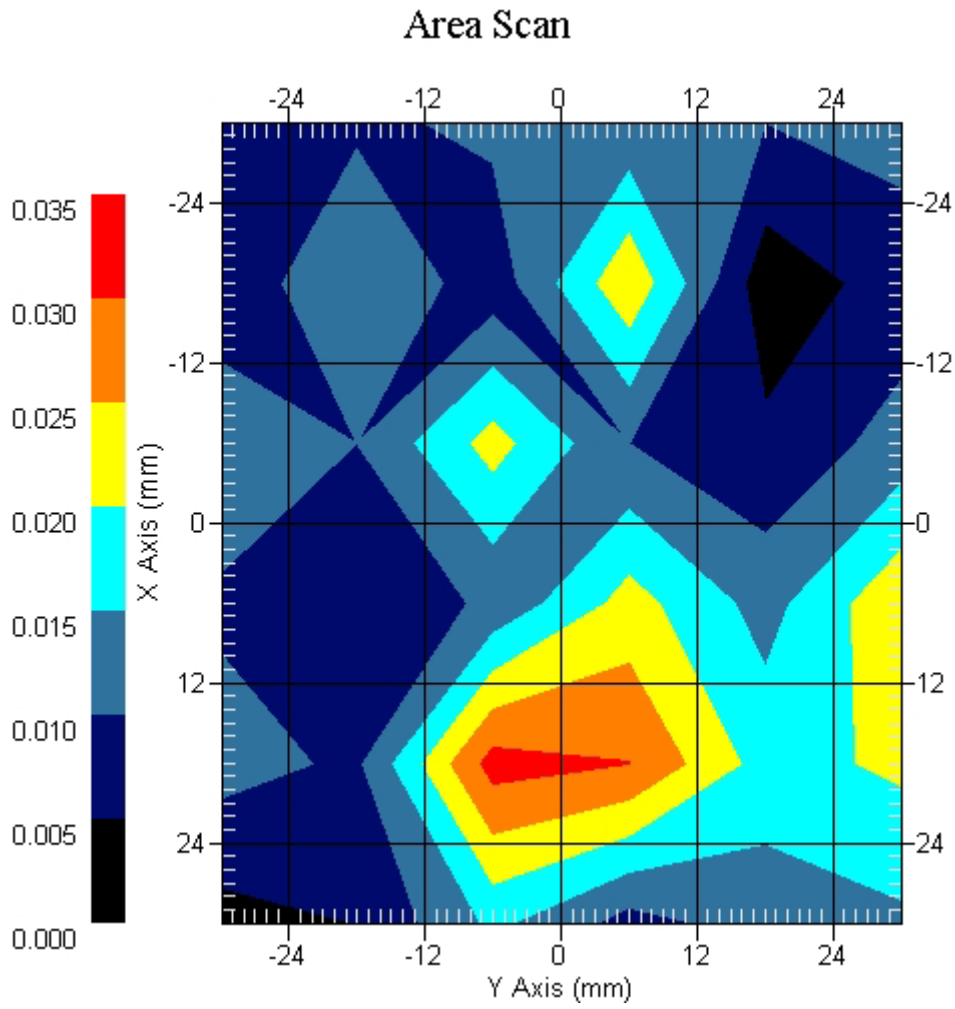
Crest Factor : 1
Tissue Temp. : 21.10 °C
Ambient Temp. : 22.90 °C
Area Scan : 6x6x1 : Measurement x=12mm, y=12mm, z=4mm
Zoom Scan : 7x7x7 : Measurement x=5mm, y=5mm, z=5mm
Power Drift-Start : 0.025 W/kg
Power Drift-Finish: 0.024 W/kg
Power Drift (%) : -1.588

DUT Position : Touch
Channel : 1



1 gram SAR value : 0.031 W/kg
10 gram SAR value : 0.027 W/kg
Area Scan Peak SAR : 0.032 W/kg
Zoom Scan Peak SAR : 0.060 W/kg

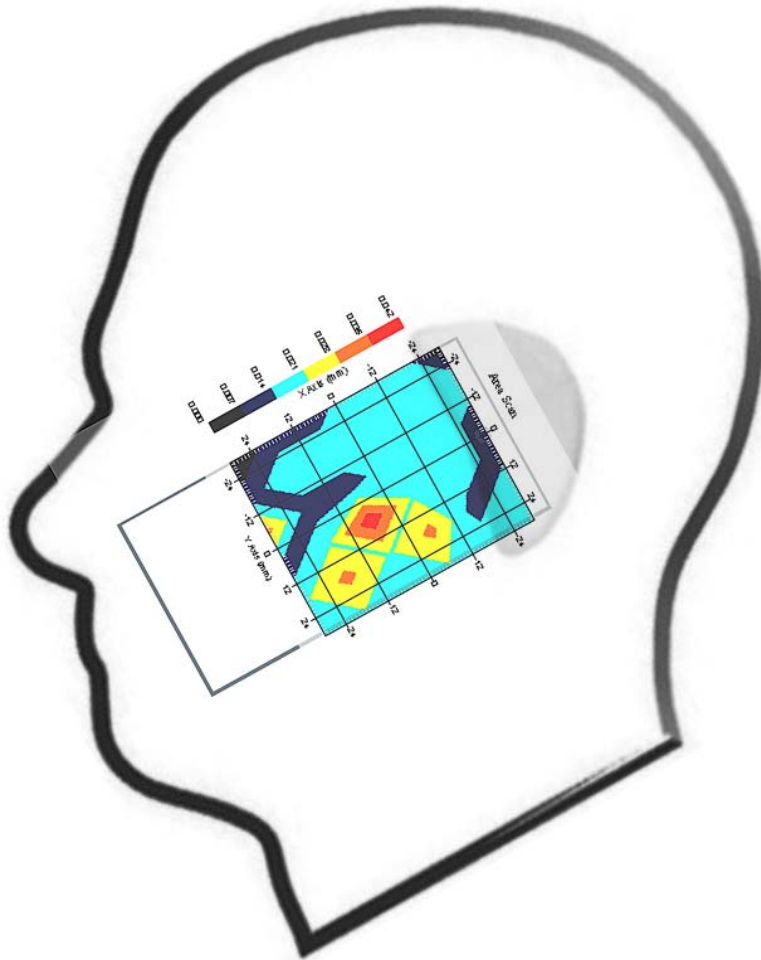
This is previous page plot (zoom in)



Measurement Data

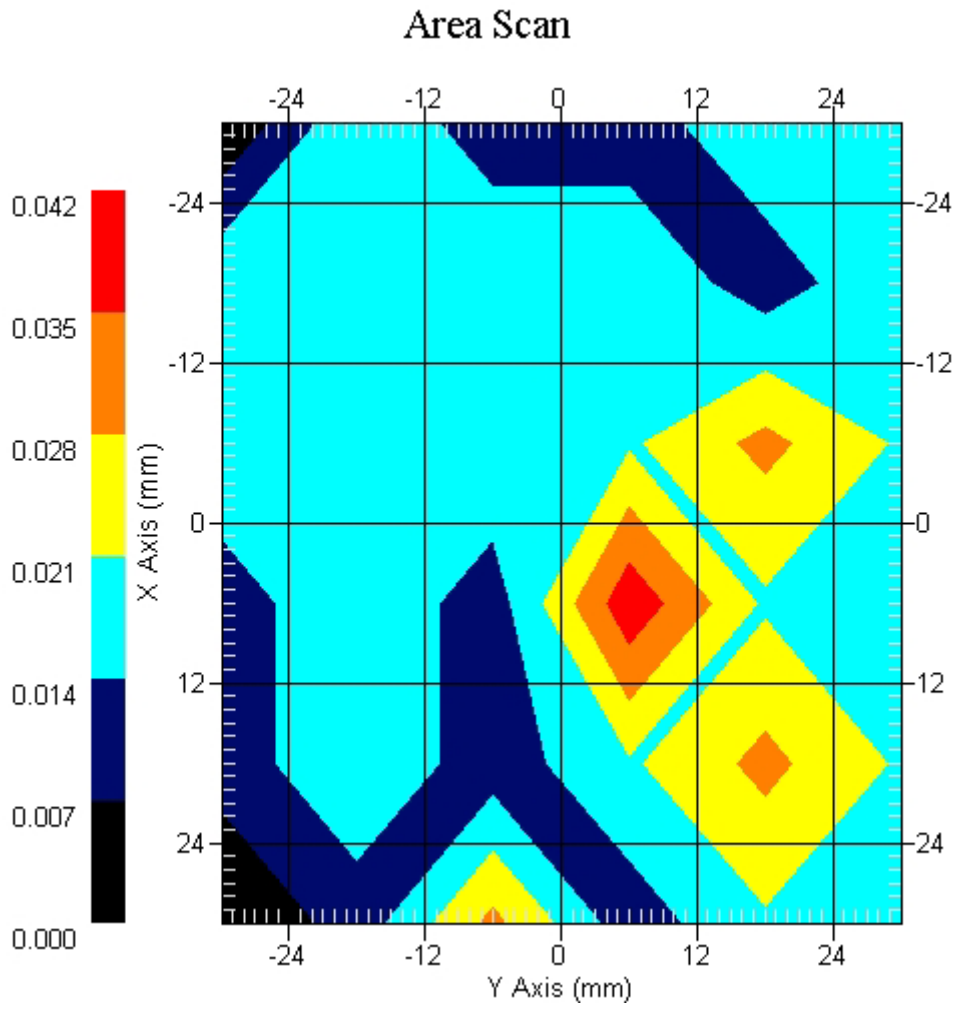
Crest Factor : 1
Tissue Temp. : 21.10 °C
Ambient Temp. : 22.90 °C
Area Scan : 6x6x1 : Measurement x=12mm, y=12mm, z=4mm
Zoom Scan : 7x7x7 : Measurement x=5mm, y=5mm, z=5mm
Power Drift-Start : 0.015 W/kg
Power Drift-Finish: 0.015 W/kg
Power Drift (%) : 0.509

DUT Position : Touch
Channel : 6



1 gram SAR value : 0.037 W/kg
10 gram SAR value : 0.030 W/kg
Area Scan Peak SAR : 0.040 W/kg
Zoom Scan Peak SAR : 0.059 W/kg

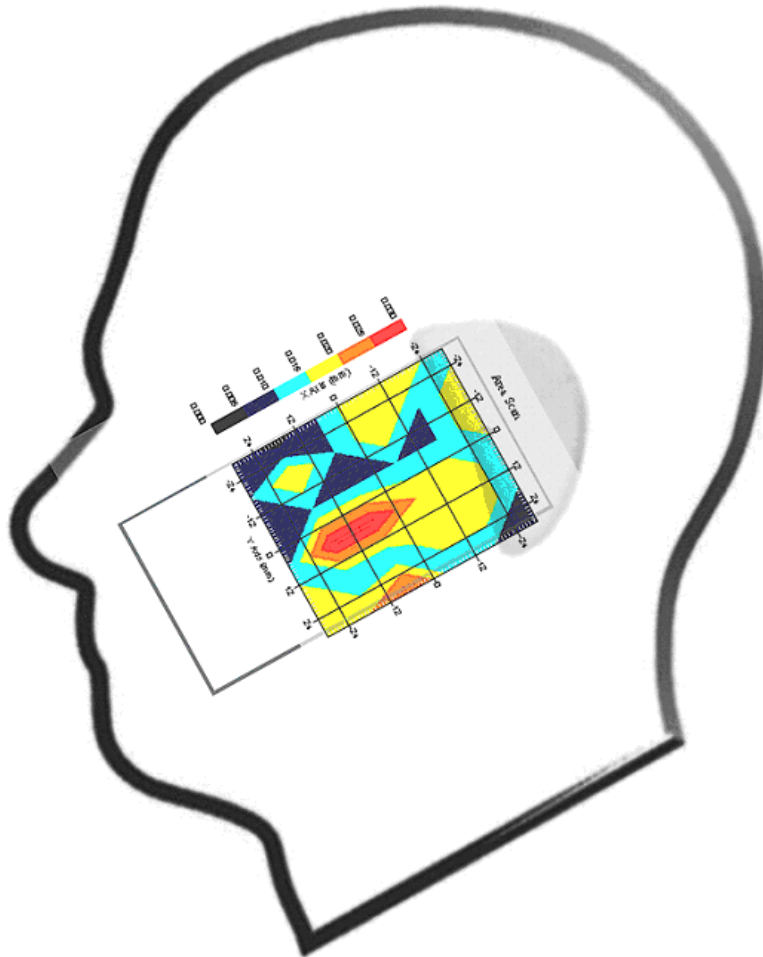
This is previous page plot (zoom in)



Measurement Data

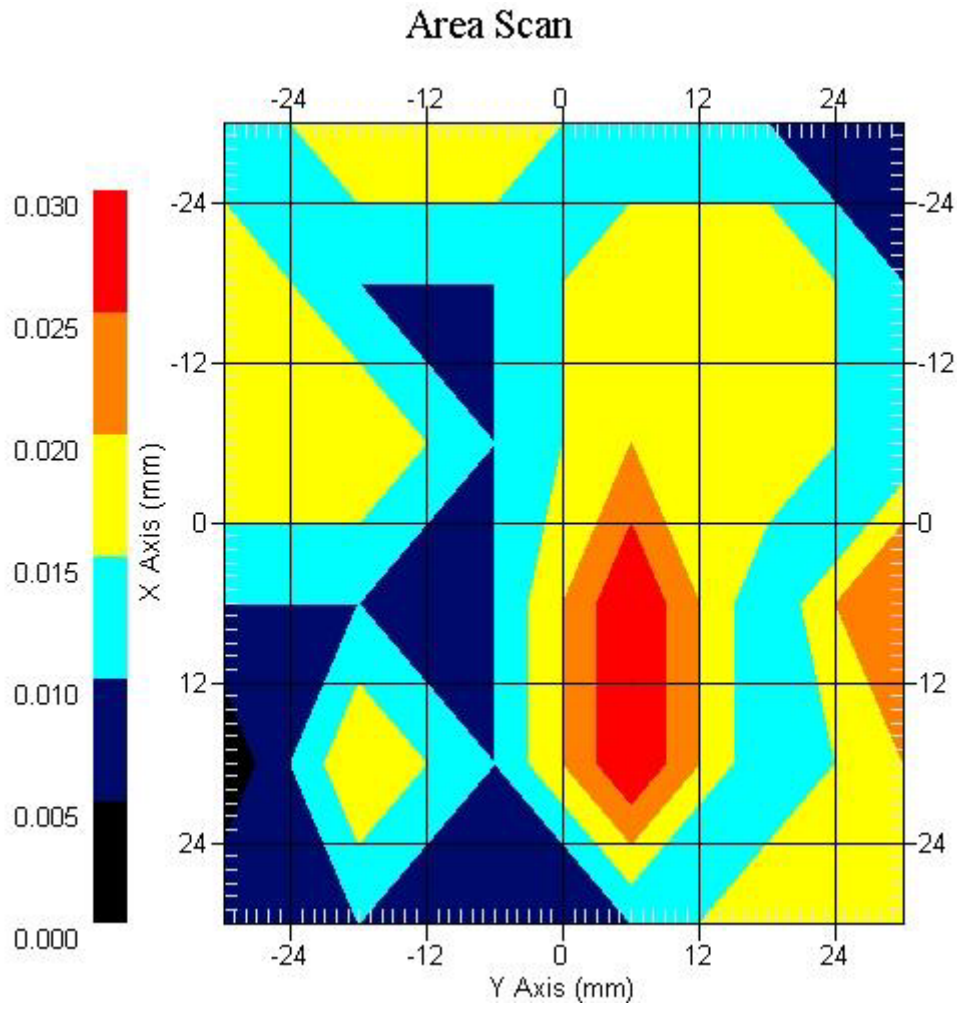
Crest Factor : 1
Tissue Temp. : 21.10 °C
Ambient Temp. : 22.90 °C
Area Scan : 6x6x1 : Measurement x=12mm, y=12mm, z=4mm
Zoom Scan : 7x7x7 : Measurement x=5mm, y=5mm, z=5mm
Power Drift-Start : 0.023 W/kg
Power Drift-Finish: 0.023 W/kg
Power Drift (%) : -0.071

DUT Position : Touch
Channel : 11



1 gram SAR value : 0.027 W/kg
10 gram SAR value : 0.019 W/kg
Area Scan Peak SAR : 0.030 W/kg
Zoom Scan Peak SAR : 0.052 W/kg

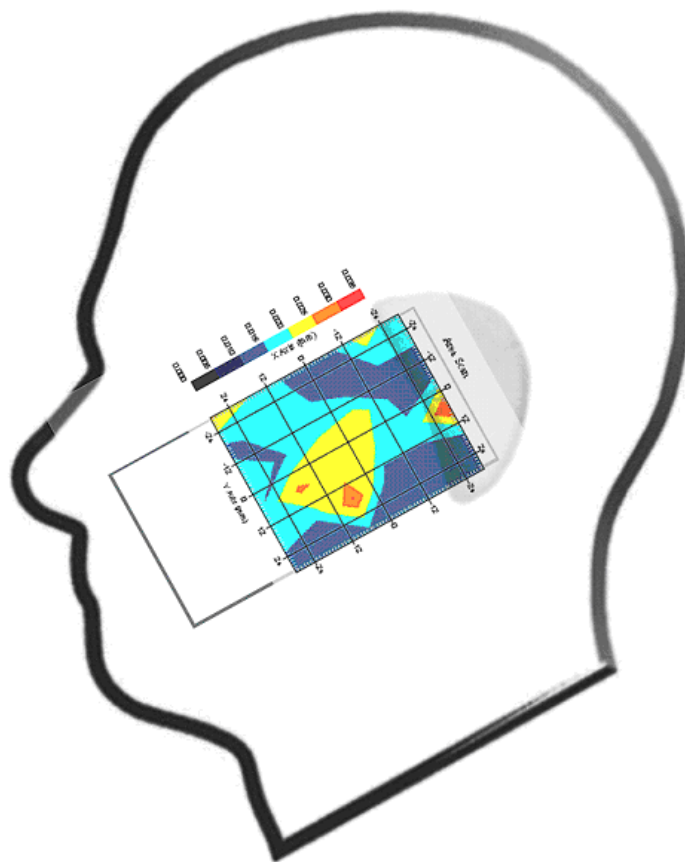
This is previous page plot (zoom in)



Measurement Data

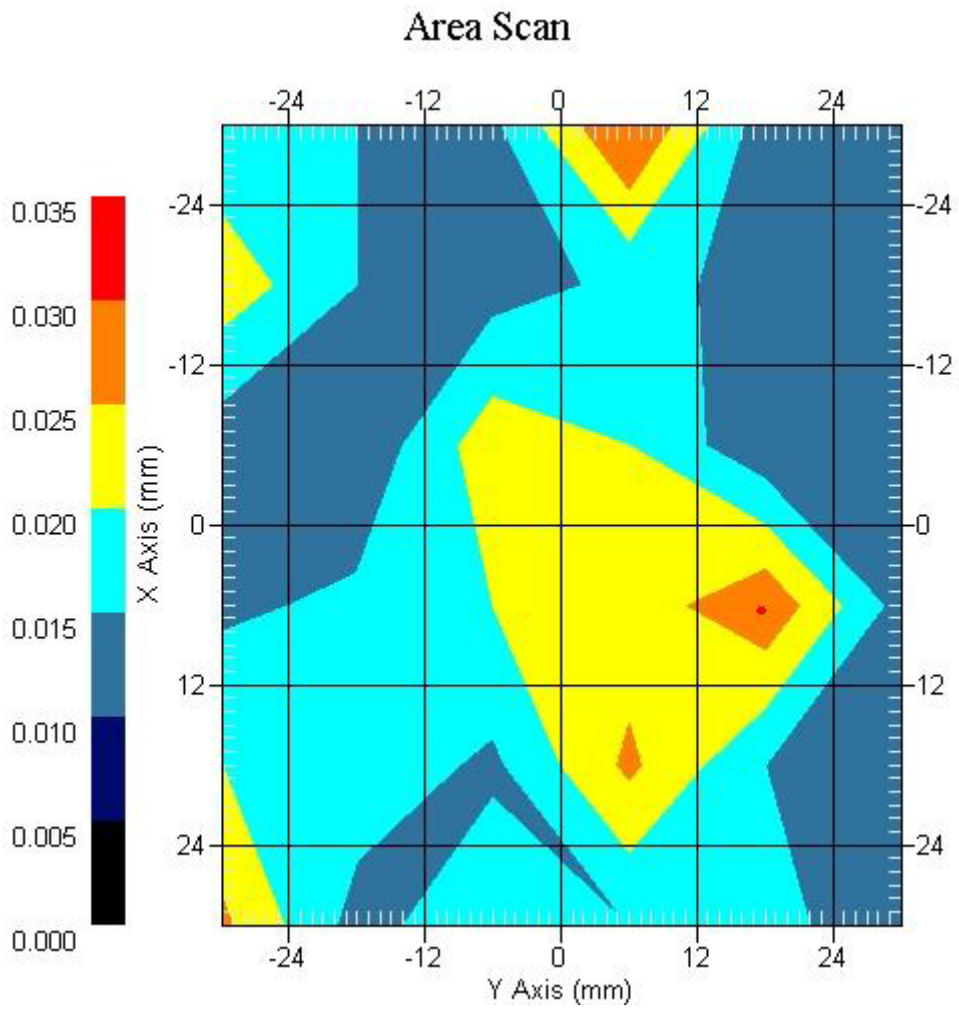
Crest Factor : 1
Tissue Temp. : 21.10 °C
Ambient Temp. : 22.90 °C
Area Scan : 6x6x1 : Measurement x=12mm, y=12mm, z=4mm
Zoom Scan : 7x7x7 : Measurement x=5mm, y=5mm, z=5mm
Power Drift-Start : 0.021 W/kg
Power Drift-Finish: 0.021 W/kg
Power Drift (%) : 0.585

DUT Position : 15° Tilt
Channel : 1



1 gram SAR value : 0.026 W/kg
10 gram SAR value : 0.020 W/kg
Area Scan Peak SAR : 0.031 W/kg
Zoom Scan Peak SAR : 0.040 W/kg

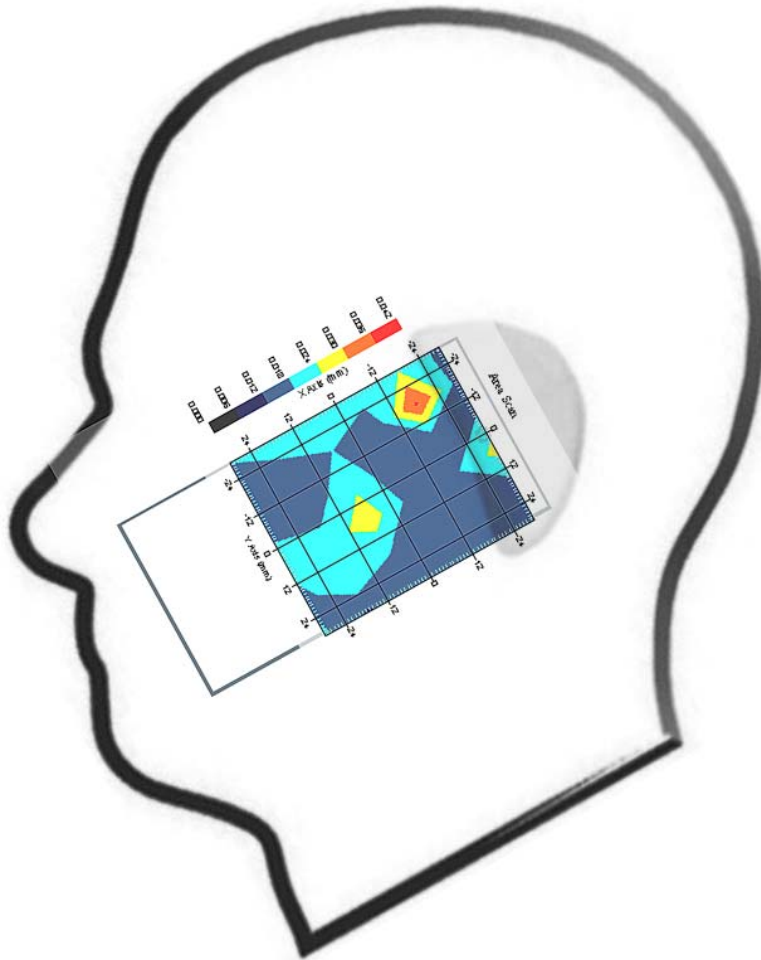
This is previous page plot (zoom in)



Measurement Data

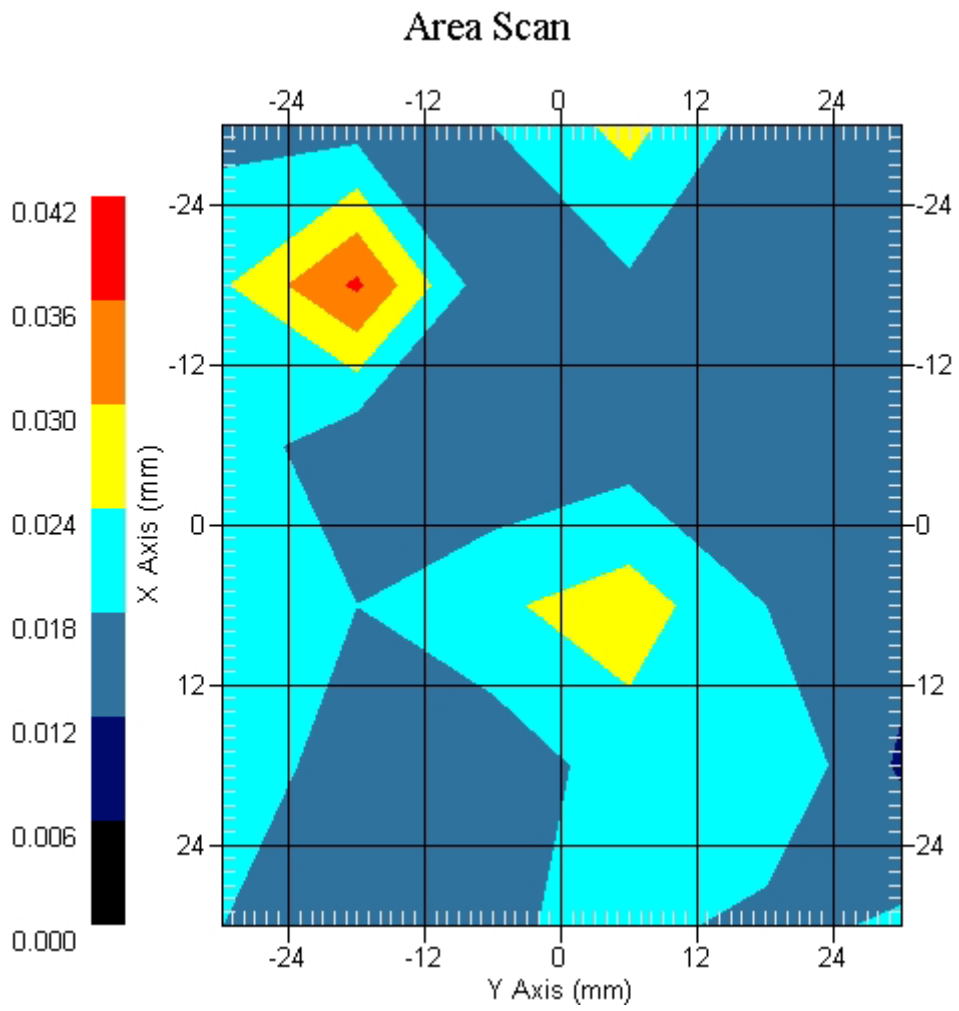
Crest Factor : 1
Tissue Temp. : 21.10 °C
Ambient Temp. : 22.90 °C
Area Scan : 6x6x1 : Measurement x=12mm, y=12mm, z=4mm
Zoom Scan : 7x7x7 : Measurement x=5mm, y=5mm, z=5mm
Power Drift-Start : 0.019 W/kg
Power Drift-Finish: 0.019 W/kg
Power Drift (%) : -0.669

DUT Position : 15° Tilt
Channel : 6



1 gram SAR value : 0.031 W/kg
10 gram SAR value : 0.027 W/kg
Area Scan Peak SAR : 0.037 W/kg
Zoom Scan Peak SAR : 0.054 W/kg

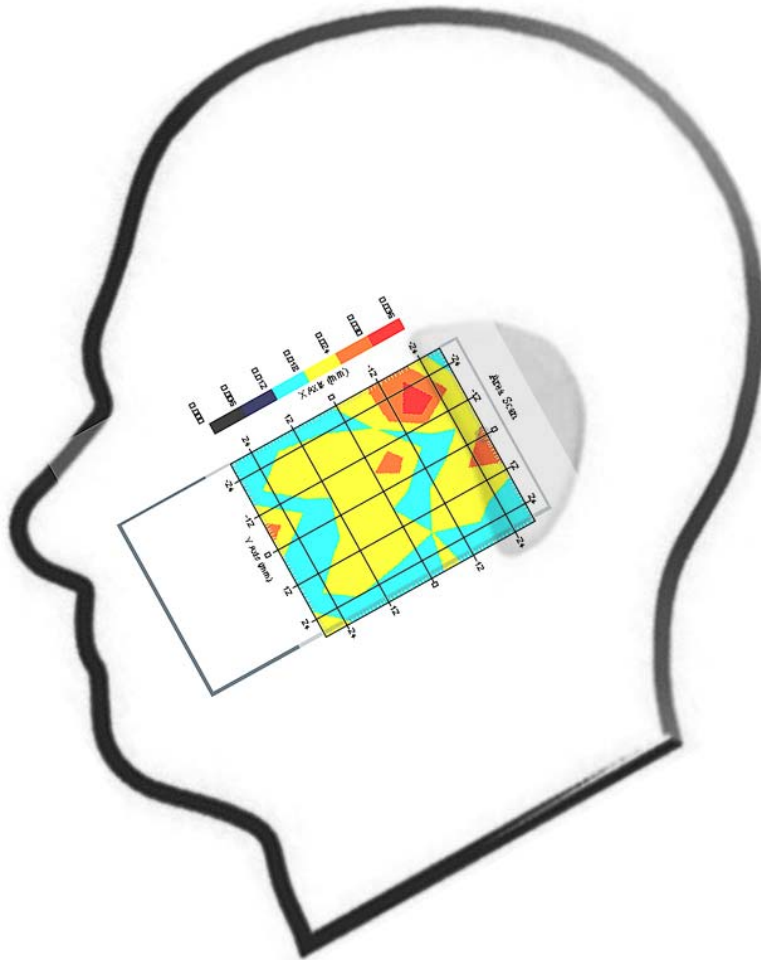
This is previous page plot (zoom in)



Measurement Data

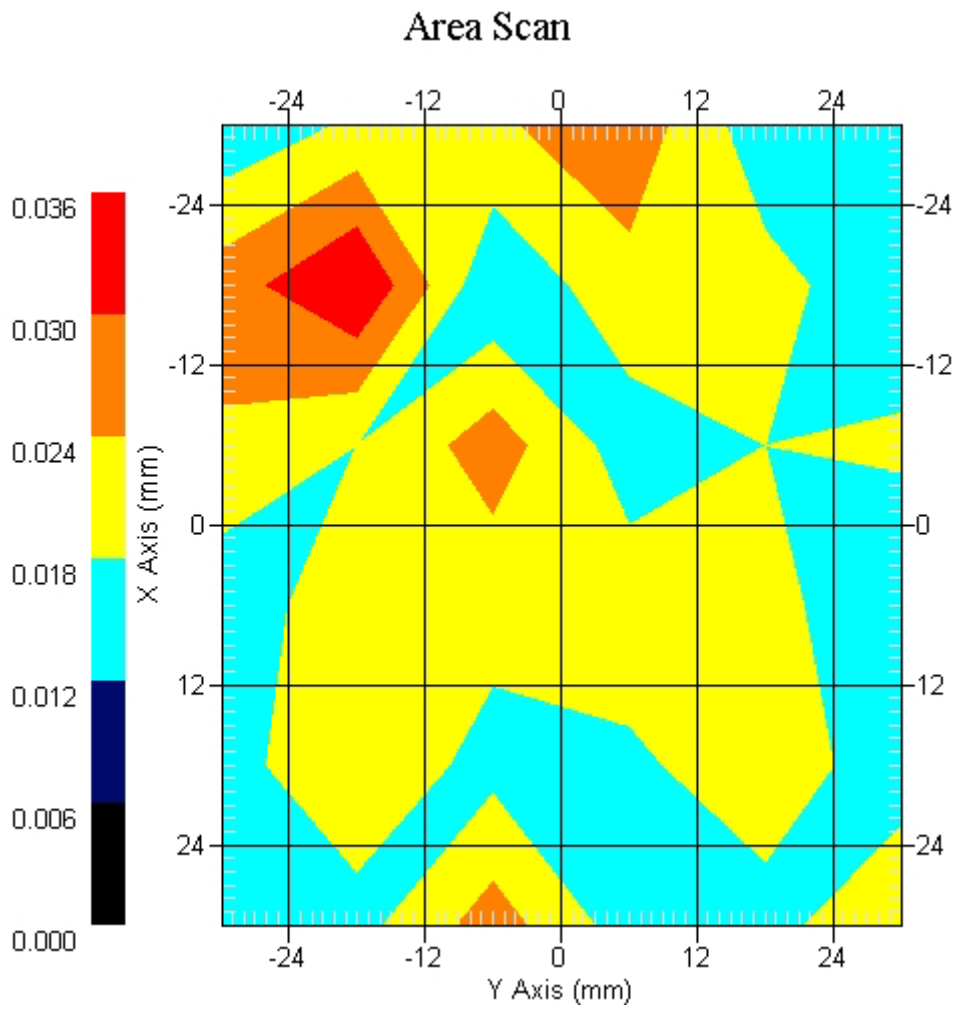
Crest Factor : 1
Tissue Temp. : 21.10 °C
Ambient Temp. : 22.90 °C
Area Scan : 6x6x1 : Measurement x=12mm, y=12mm, z=4mm
Zoom Scan : 7x7x7 : Measurement x=5mm, y=5mm, z=5mm
Power Drift-Start : 0.019 W/kg
Power Drift-Finish: 0.019 W/kg
Power Drift (%) : -0.540

DUT Position : 15° Tilt
Channel : 11



1 gram SAR value : 0.033 W/kg
10 gram SAR value : 0.029 W/kg
Area Scan Peak SAR : 0.036 W/kg
Zoom Scan Peak SAR : 0.070 W/kg

This is previous page plot (zoom in)



ALSAS-10U VER 2.3.6 APREL Laboratories
SAR Test ReportReport Date : 29-Apr-2008
Measurement Date : 29-Apr-2008

Product Data

Device Name : GIGA
Type : Std Form Cell Phone
Model : Atom V
Frequency : 2450.00 MHz
Drift Time : 0 min(s)
Length : 116.1 mm
Width : 59.5 mm
Depth : 15.5 mm
Antenna Type : Internal

Phantom Data

Type : Uni-Phantom
Size (mm) : 280 x 280 x 200
Location : Center

Tissue Data

Type : BODY
Serial No. : 325-B
Frequency : 2450.00 MHz
Last Calib. Date : 29-Apr-2008
Temperature : 21.10 °C
Ambient Temp. : 22.90 °C
Humidity : 48.00 RH%
Epsilon : 53.16 F/m
Sigma : 1.79 S/m
Density : 1000.00 kg/cu. m

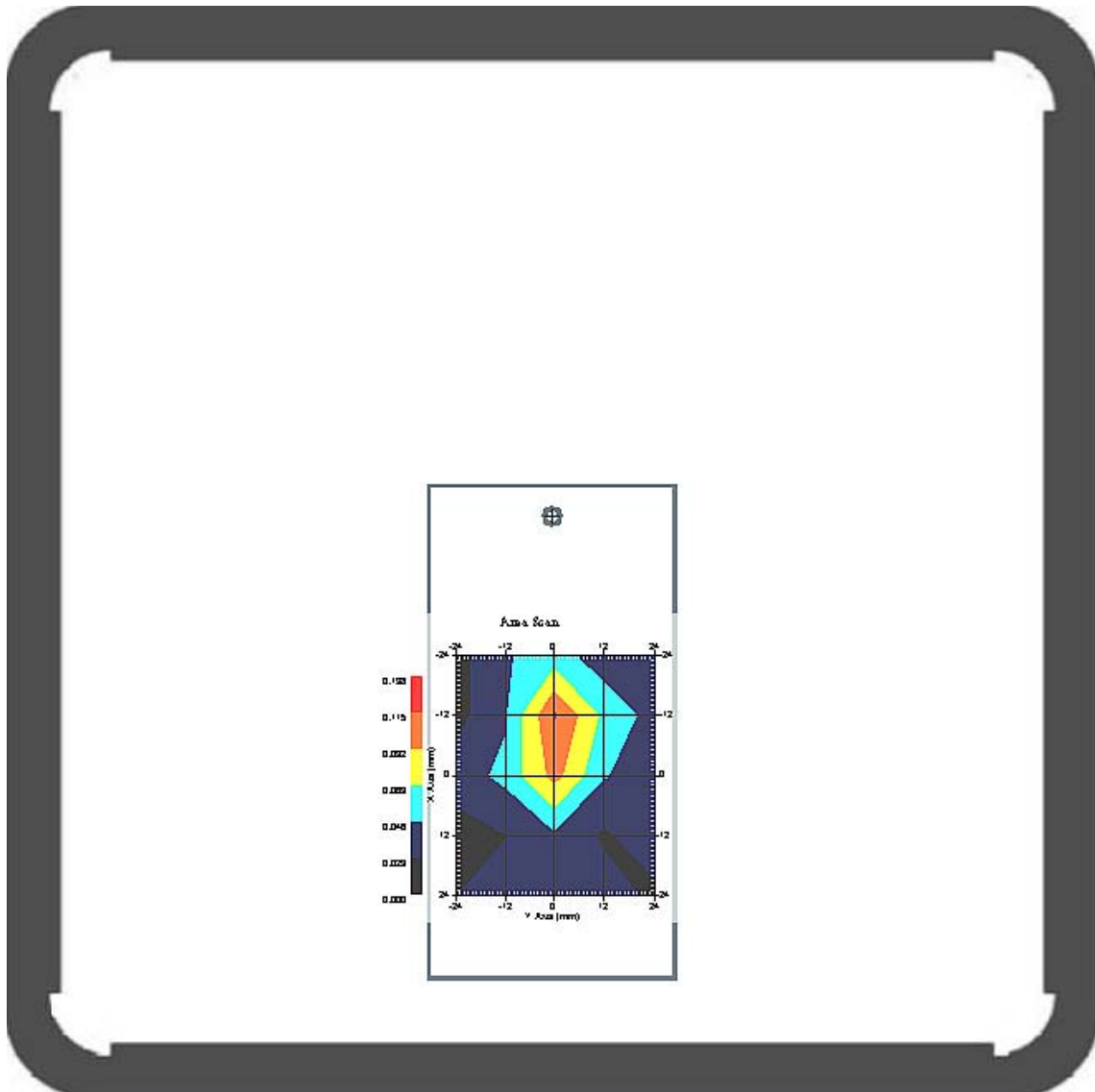
Probe Data

Name : Probe 264
Model : E020
Type : E-Field Triangle
Serial No. : 264
Last Calib. Date : 21-Aug-2007
Frequency : 2450.00 MHz
Duty Cycle Factor: 1
Conversion Factor: 5.2
Probe Sensitivity: 1.20 1.20 1.20 $\mu\text{V}/(\text{V}/\text{m})^2$
Compression Point: 95.00 mV
Offset : 1.56 mm

Measurement Data

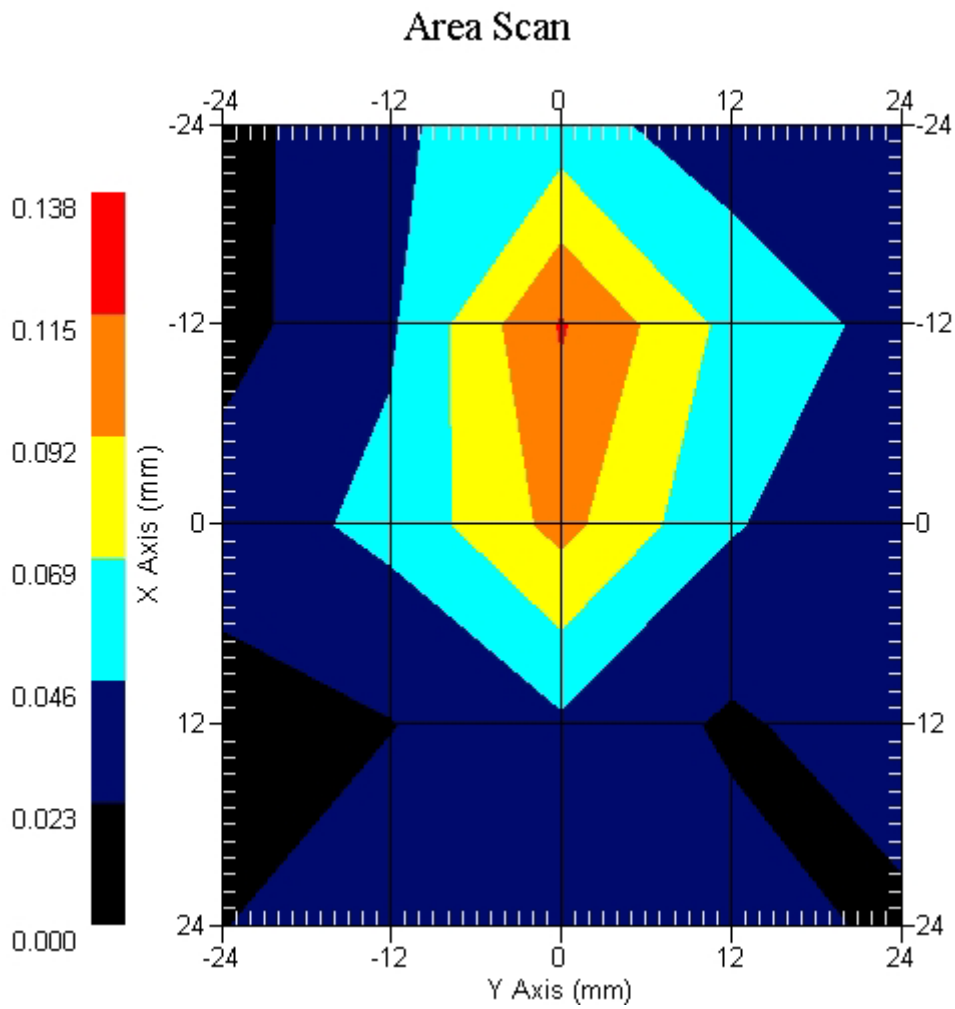
Crest Factor : 1
Tissue Temp. : 21.10 °C
Ambient Temp. : 22.90 °C
Area Scan : 5x5x1 : Measurement x=12mm, y=12mm, z=4mm
Zoom Scan : 7x7x7 : Measurement x=5mm, y=5mm, z=5mm
Power Drift-Start : 0.042 W/kg
Power Drift-Finish: 0.041 W/kg
Power Drift (%) : -2.380

DUT Position : Touch
Channel : 1



1 gram SAR value : 0.098 W/kg
10 gram SAR value : 0.051 W/kg
Area Scan Peak SAR : 0.117 W/kg
Zoom Scan Peak SAR : 0.147 W/kg

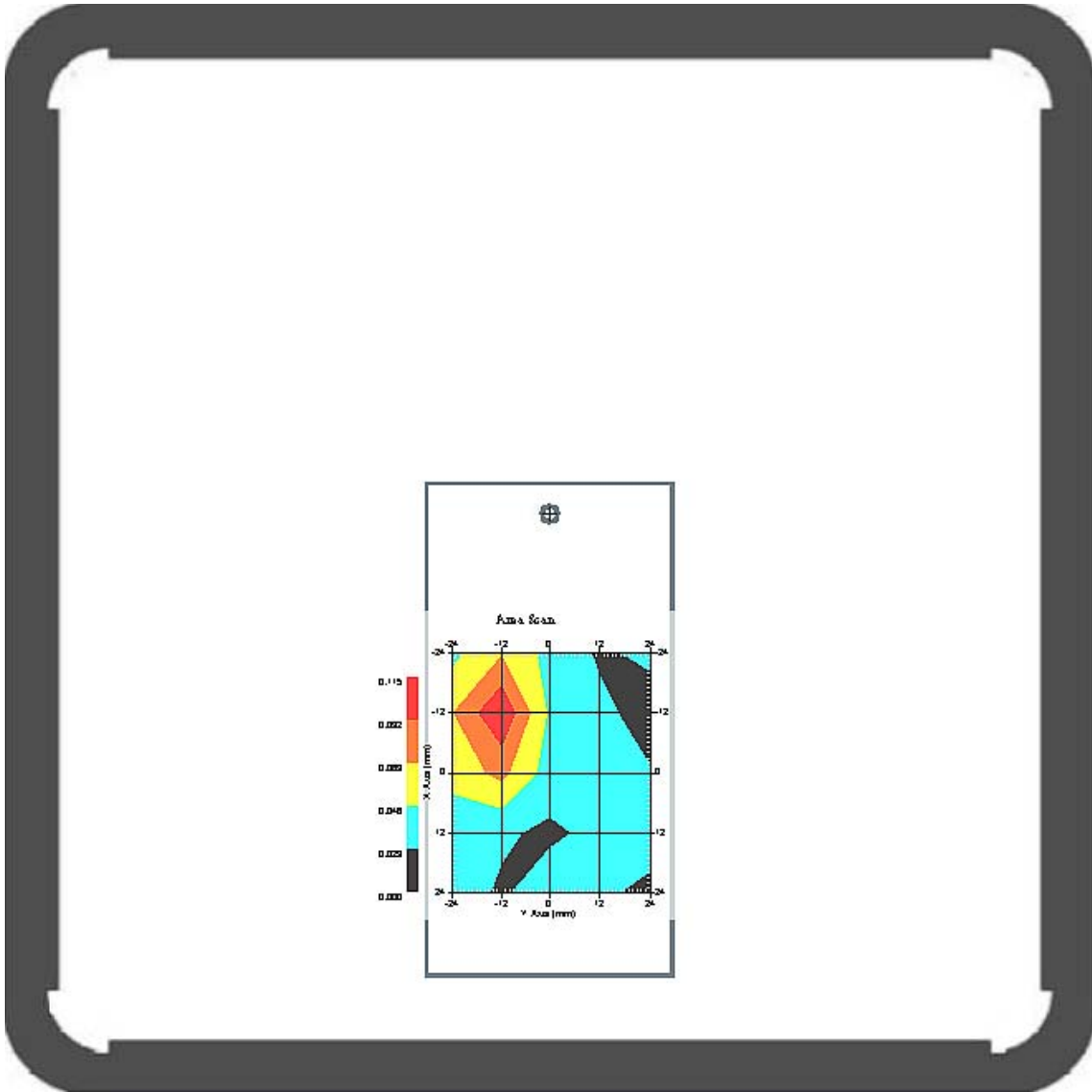
This is previous page plot (zoom in)



Measurement Data

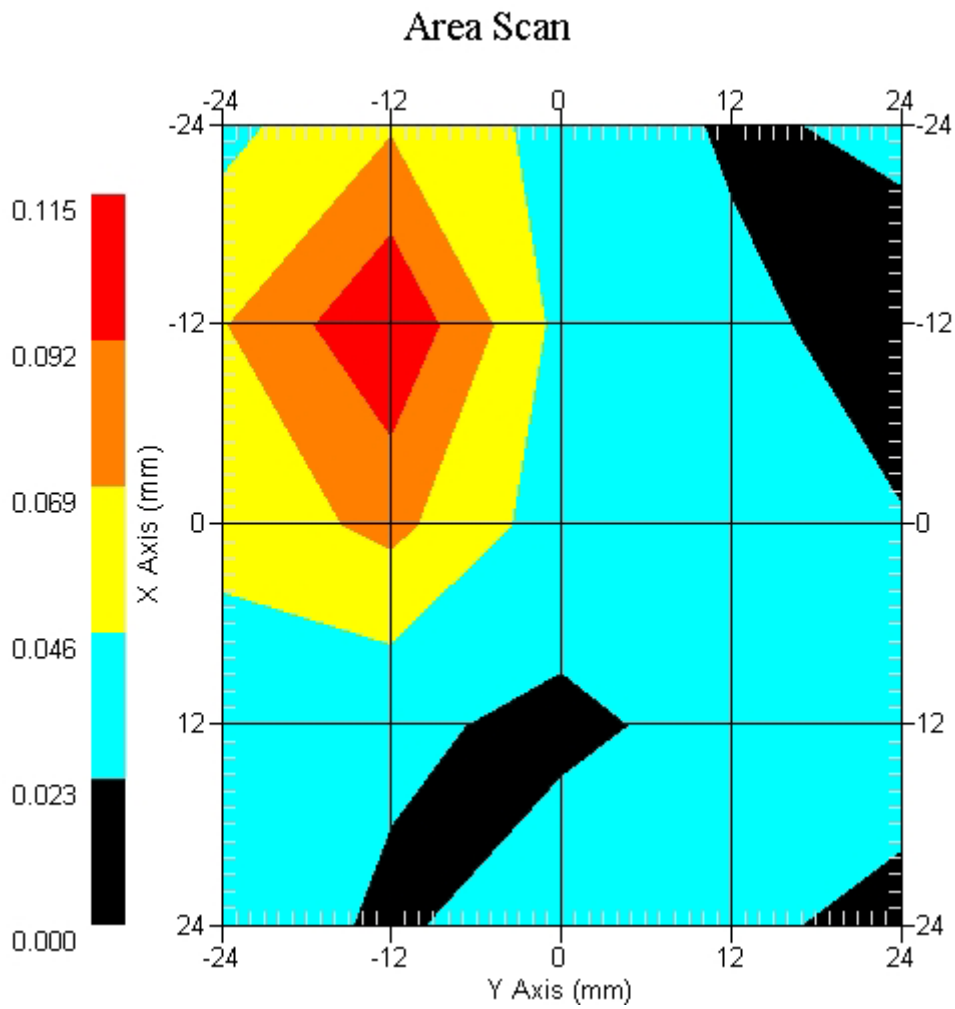
Crest Factor : 1
Tissue Temp. : 21.10 °C
Ambient Temp. : 22.90 °C
Area Scan : 5x5x1 : Measurement x=12mm, y=12mm, z=4mm
Zoom Scan : 7x7x7 : Measurement x=5mm, y=5mm, z=5mm
Power Drift-Start : 0.058 W/kg
Power Drift-Finish: 0.060 W/kg
Power Drift (%) : 3.448

DUT Position : Touch
Channel : 6



1 gram SAR value : 0.061 W/kg
10 gram SAR value : 0.033 W/kg
Area Scan Peak SAR : 0.113 W/kg
Zoom Scan Peak SAR : 0.150 W/kg

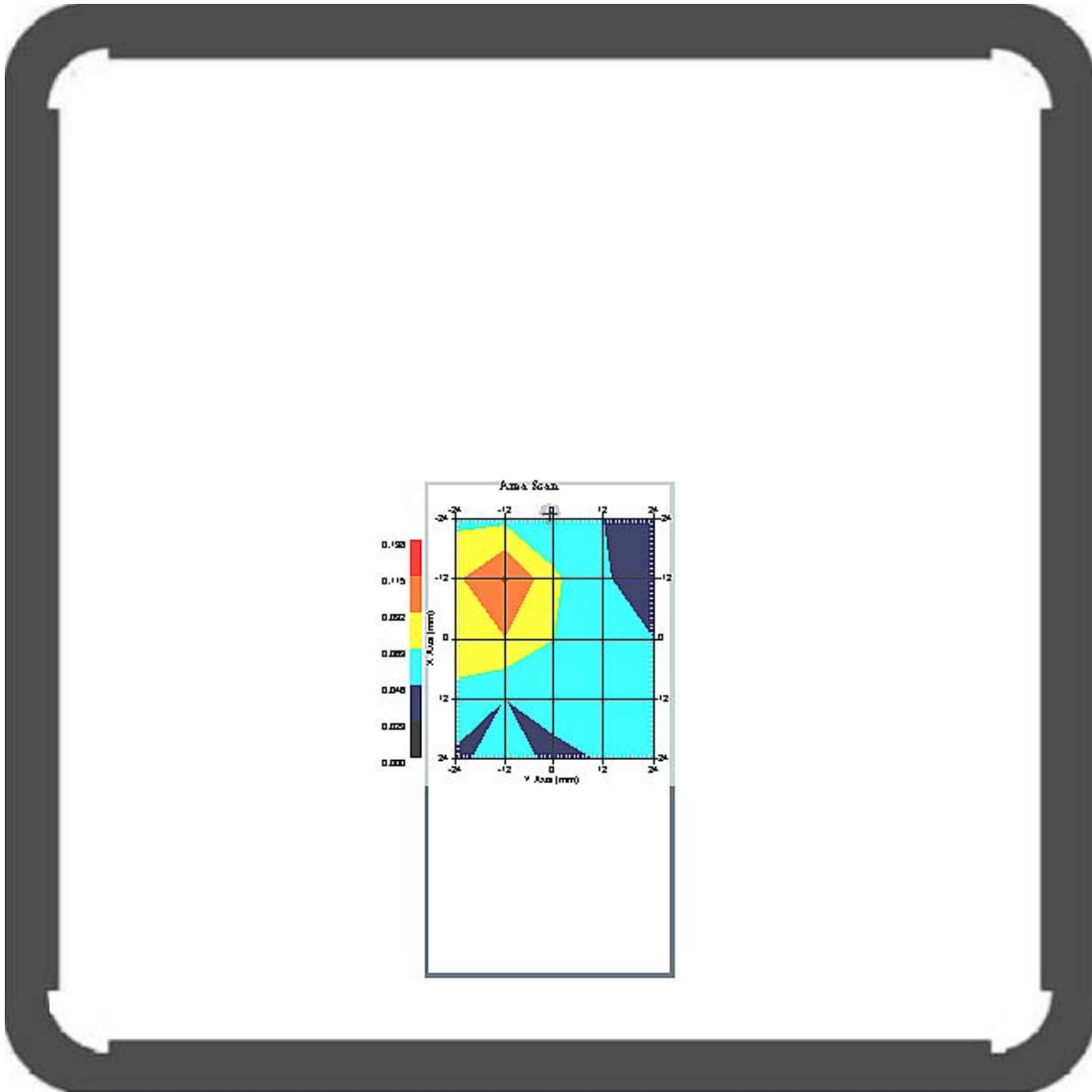
This is previous page plot (zoom in)



Measurement Data

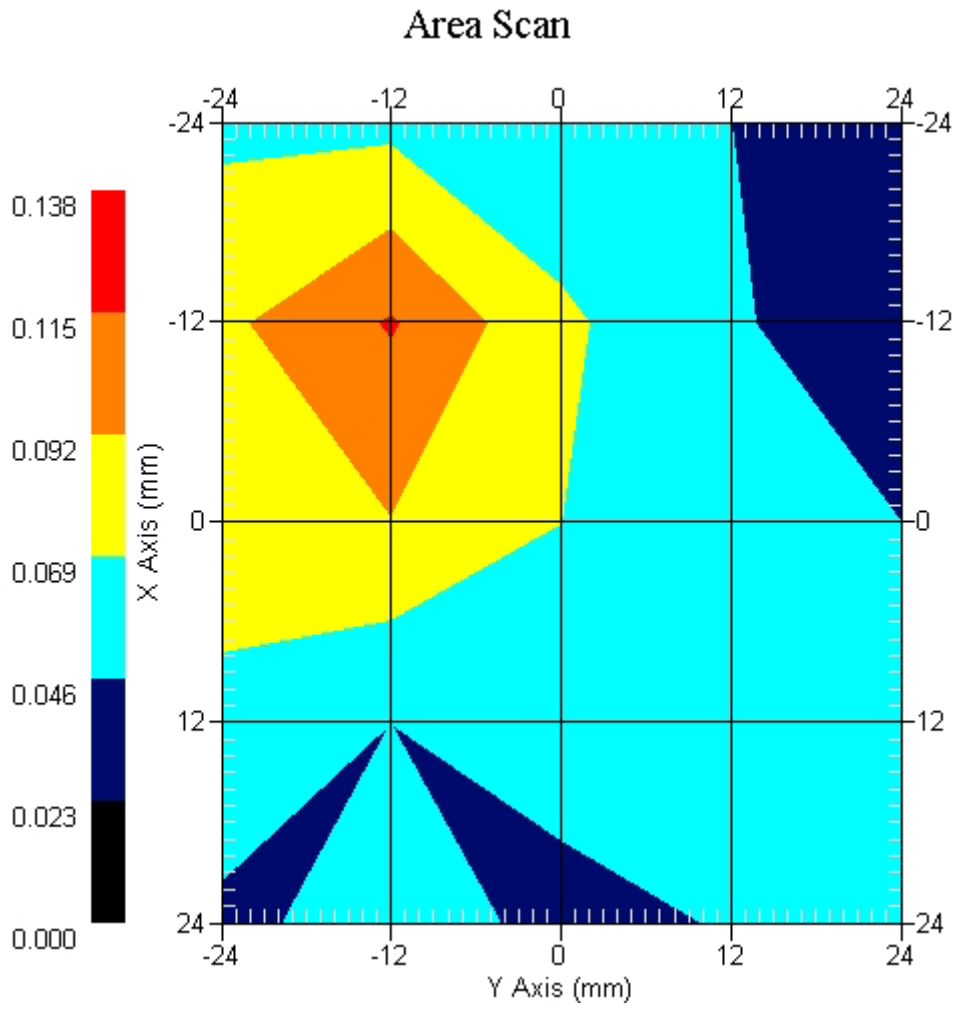
Crest Factor : 1
Tissue Temp. : 21.10 °C
Ambient Temp. : 22.90 °C
Area Scan : 5x5x1 : Measurement x=12mm, y=12mm, z=4mm
Zoom Scan : 7x7x7 : Measurement x=5mm, y=5mm, z=5mm
Power Drift-Start : 0.048 W/kg
Power Drift-Finish: 0.046 W/kg
Power Drift (%) : -4.166

DUT Position : Touch
Channel : 11

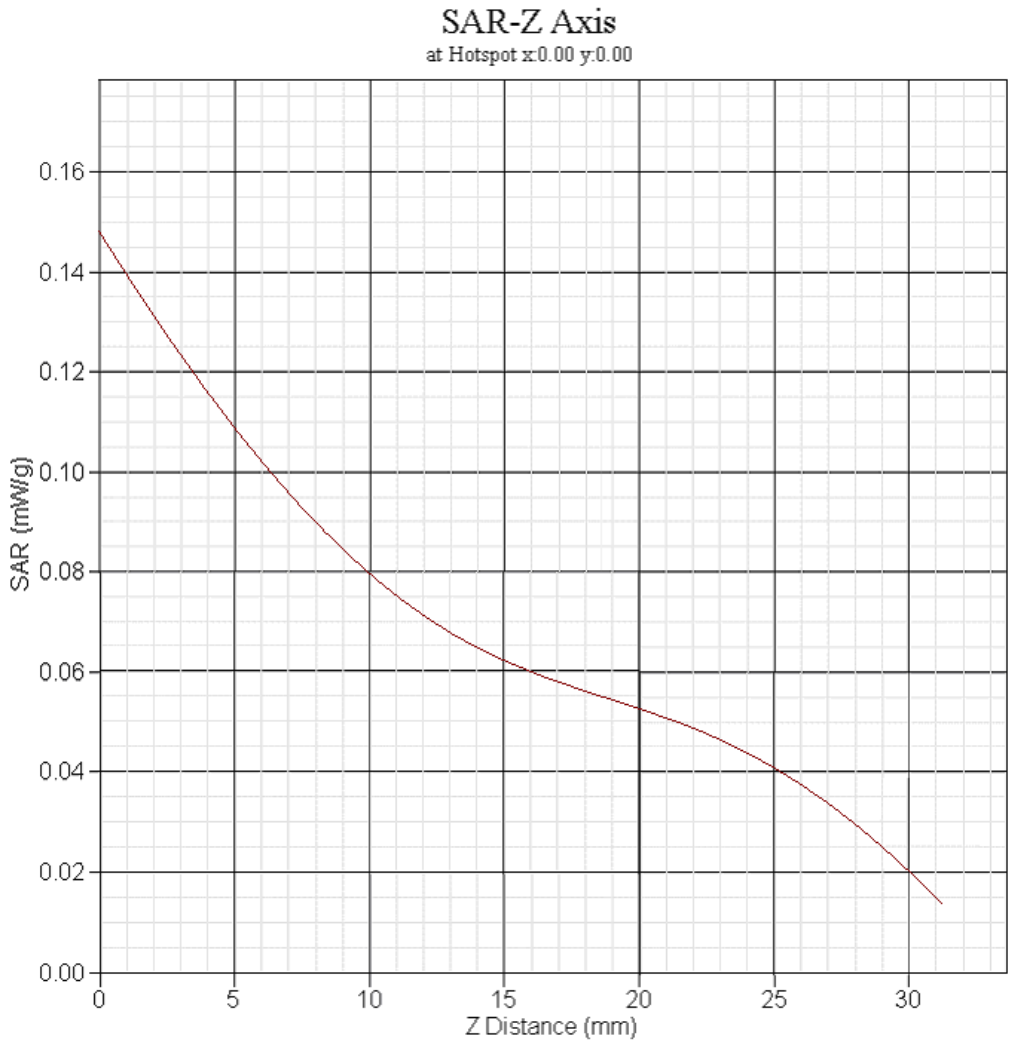


1 gram SAR value : 0.096 W/kg
10 gram SAR value : 0.053 W/kg
Area Scan Peak SAR : 0.117 W/kg
Zoom Scan Peak SAR : 0.220 W/kg

This is previous page plot (zoom in)

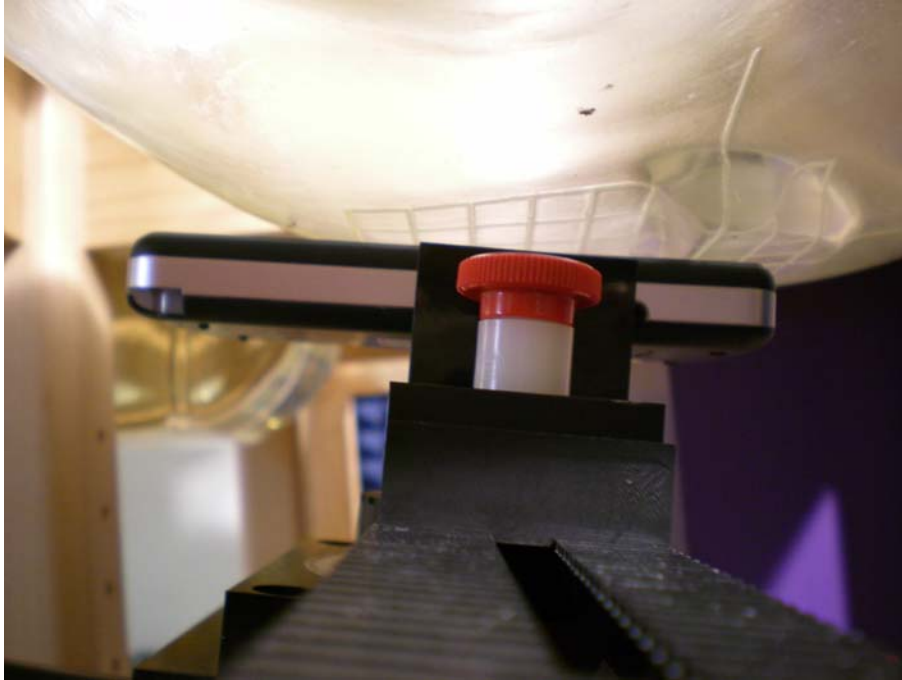


802.11g EUT Body-worn Z-Axis plot
Channel: 1

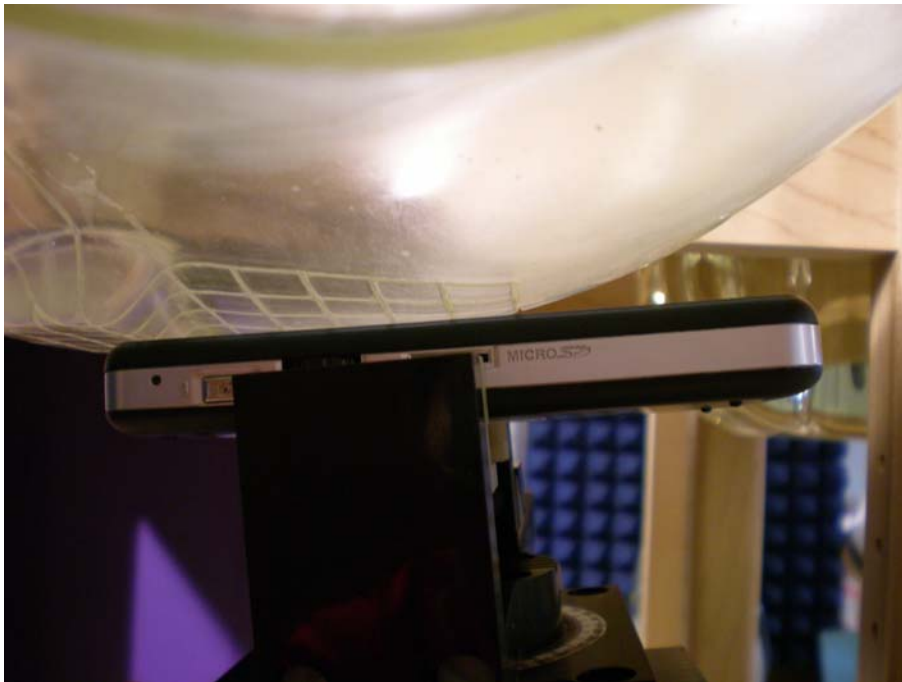


Appendix C. Test Setup Photographs & EUT Photographs
Test Setup Photographs

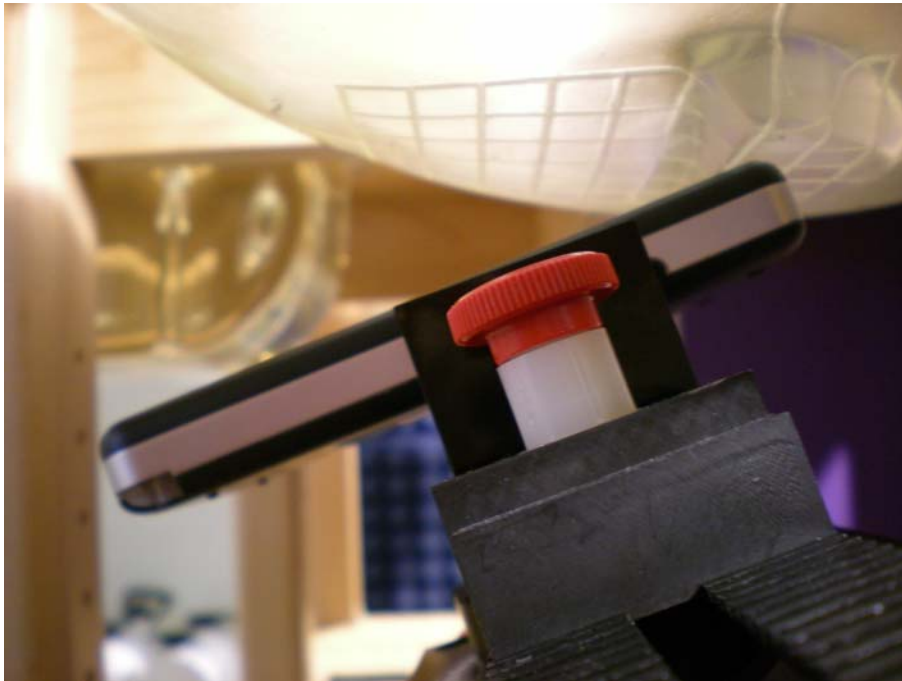
Right Head (EUT Cheek)



Left Head (EUT Cheek)

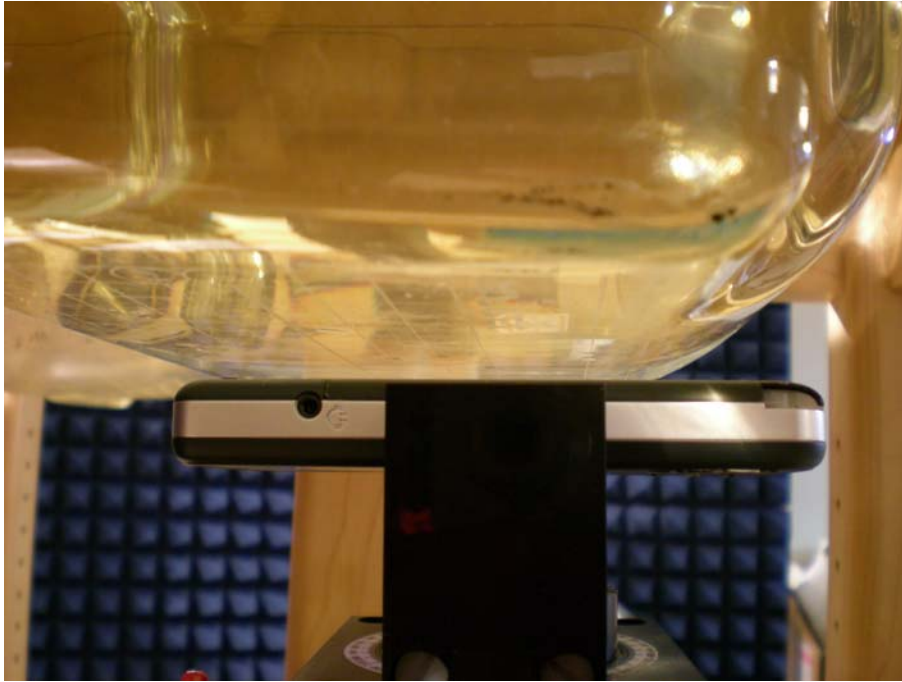


Right Head (EUT Tilted)



Left Head (EUT Tilted)



Body

Note: The positions used in the measurements were according to IEEE 1528-2003.

Test EUT Photographs

