

SAR measurement Data

ALSAS-10U VER 2.3.6 APREL Laboratories

SAR Test Report-PCS 1900

Report Date : 10-Mar-2008
Measurement Date : 10-Mar-2008

Product Data

Device Name : GIGA
Type : Std Form Cell Phone
Model : Atom V
Frequency : 1900.00 MHz
Max. Transmit Pwr : 1 W
Drift Time : 0 min(s)
Length : 116.1 mm
Width : 59.5 mm
Depth : 15.5 mm
Antenna Type : Internal

Phantom Data

Type : SAM-Left
Size (mm) : 280 x 280 x 280
Location : Left

Tissue Data

Type : HEAD
Serial No. : 324-H
Frequency : 1900.00 MHz
Last Calib. Date : 10-Mar-2008
Temperature : 20.10 °C
Ambient Temp. : 21.30 °C
Humidity : 48.00 RH%
Epsilon : 40.12 F/m
Sigma : 1.43 S/m
Density : 1000.00 kg/cu. m

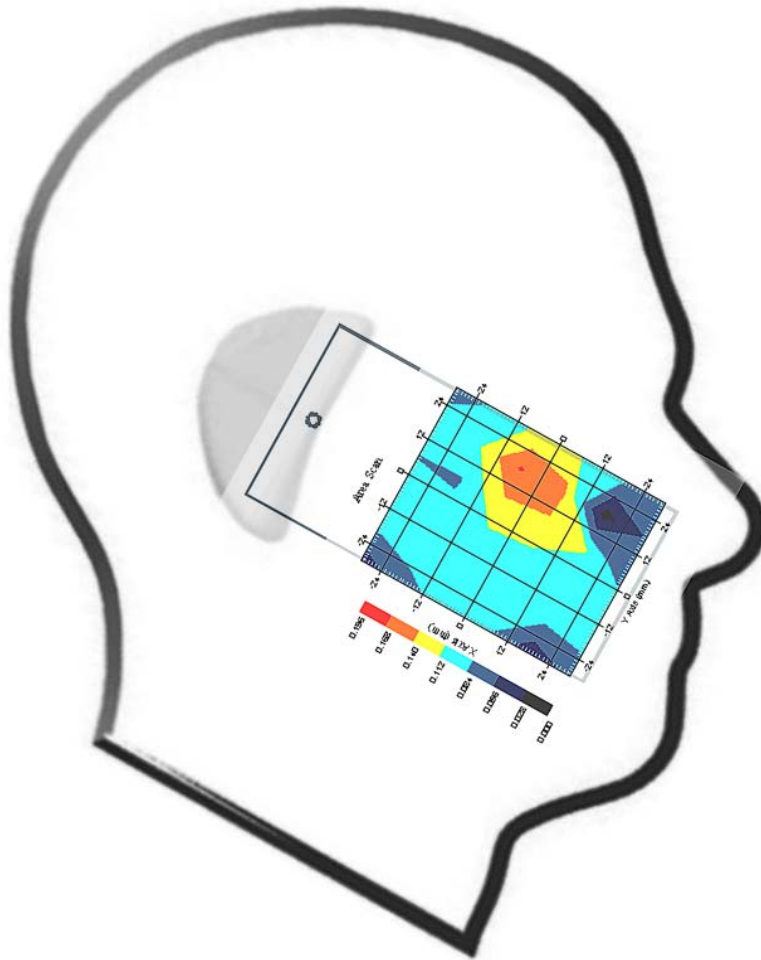
Probe Data

Name : Probe 264
Model : E020
Type : E-Field Triangle
Serial No. : 264
Last Calib. Date : 21-Aug-2007
Frequency : 1900.00 MHz
Duty Cycle Factor: 8
Conversion Factor: 5.5
Probe Sensitivity: 1.20 1.20 1.20 $\mu\text{V}/(\text{V}/\text{m})^2$
Compression Point: 95.00 mV
Offset : 1.56 mm

Measurement Data

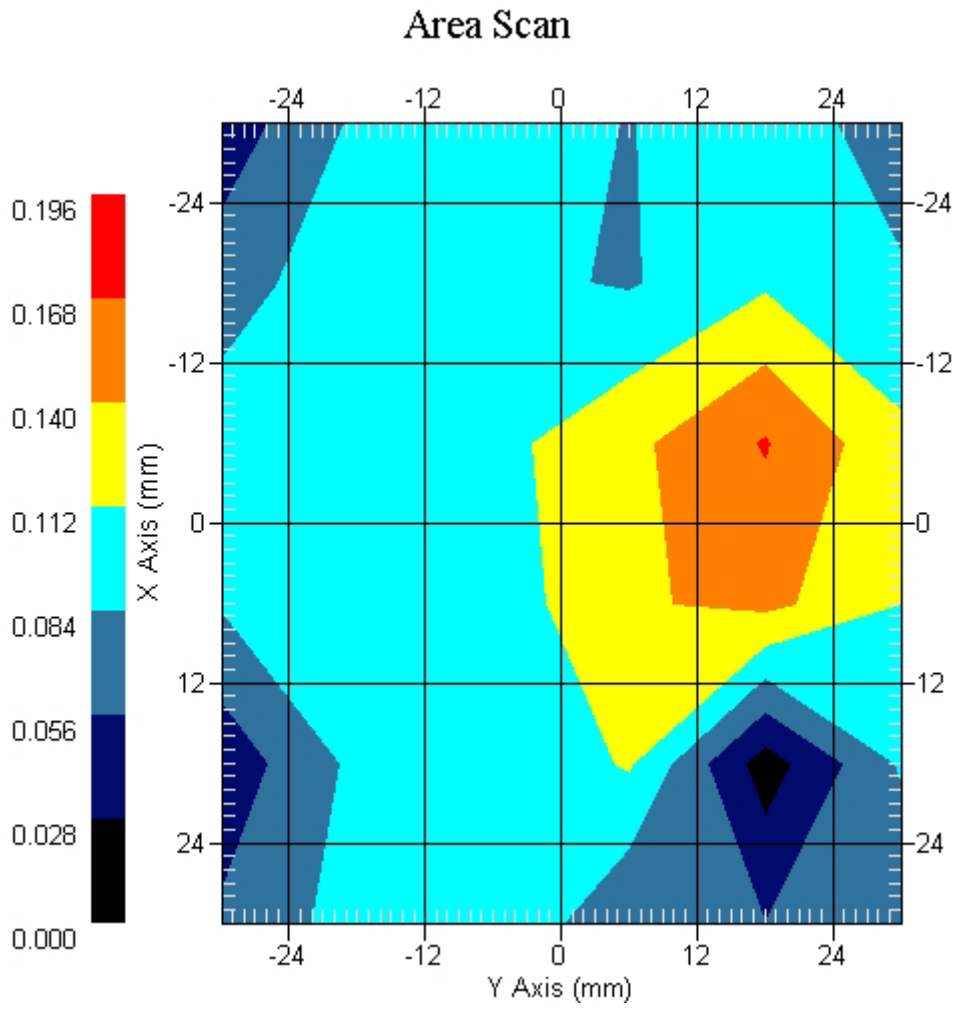
Crest Factor : 8
Tissue Temp. : 20.10 °C
Ambient Temp. : 21.30 °C
Area Scan : 6x6x1 : Measurement x=12mm, y=12mm, z=4mm
Zoom Scan : 7x7x7 : Measurement x=5mm, y=5mm, z=5mm
Power Drift-Start : 0.058 W/kg
Power Drift-Finish: 0.060 W/kg
Power Drift (%) : 3.448

DUT Position : Touch
Channel : 512



1 gram SAR value : 0.222 W/kg
10 gram SAR value : 0.130 W/kg
Area Scan Peak SAR : 0.170 W/kg
Zoom Scan Peak SAR : 0.660 W/kg

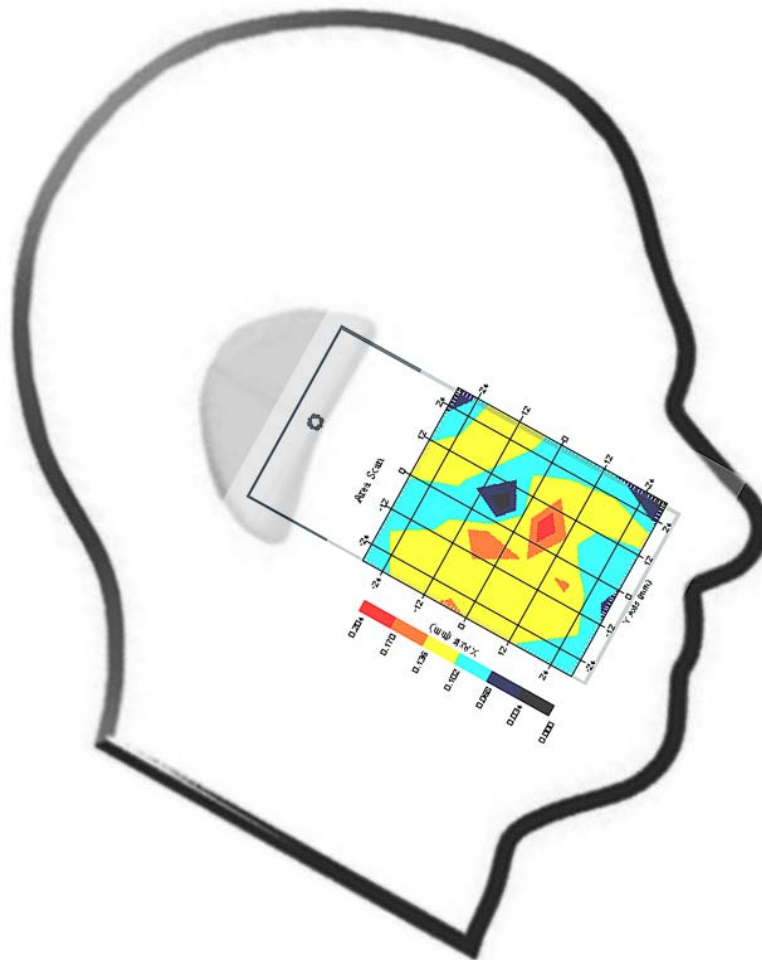
This is previous page plot (zoom in)



Measurement Data

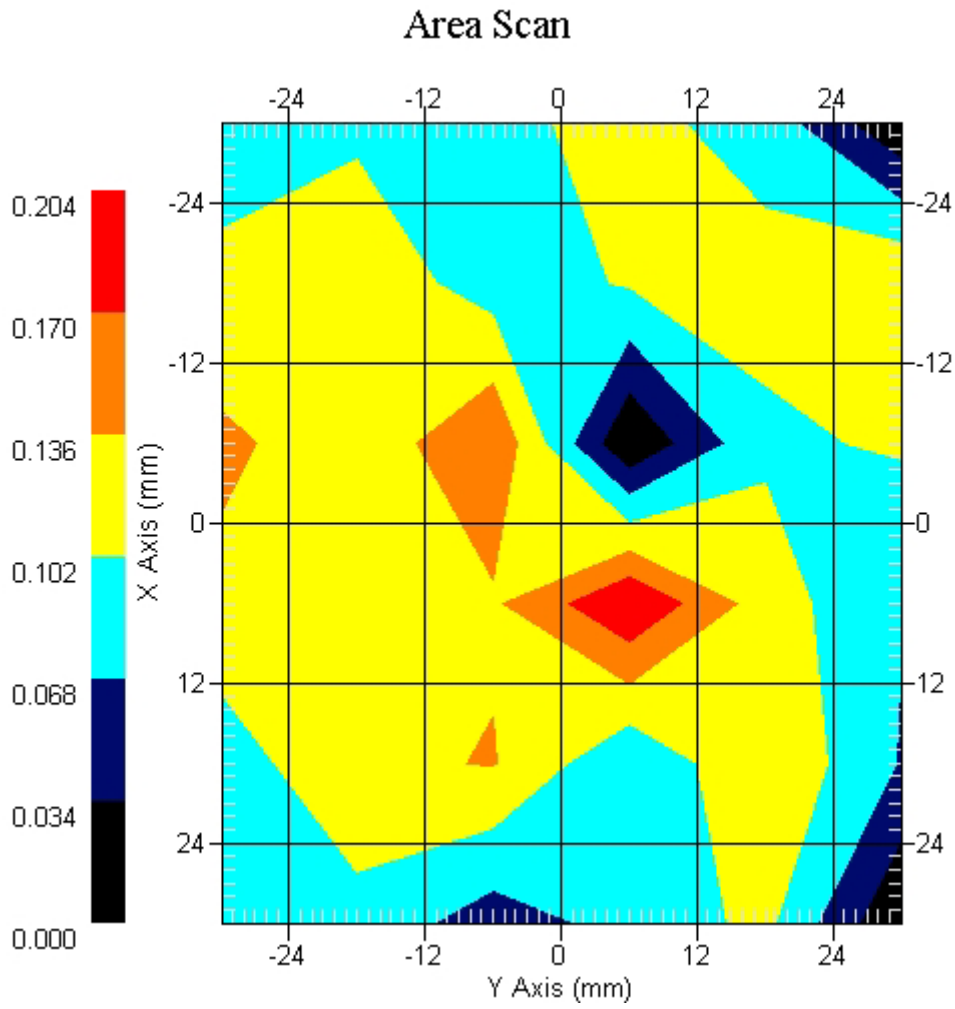
Crest Factor : 8
Tissue Temp. : 20.10 °C
Ambient Temp. : 21.30 °C
Area Scan : 6x6x1 : Measurement x=12mm, y=12mm, z=4mm
Zoom Scan : 7x7x7 : Measurement x=5mm, y=5mm, z=5mm
Power Drift-Start : 0.057 W/kg
Power Drift-Finish: 0.059 W/kg
Power Drift (%) : -3.508

DUT Position : Touch
Channel : 661



1 gram SAR value : 0.276 W/kg
10 gram SAR value : 0.234 W/kg
Area Scan Peak SAR : 0.201 W/kg
Zoom Scan Peak SAR : 0.450 W/kg

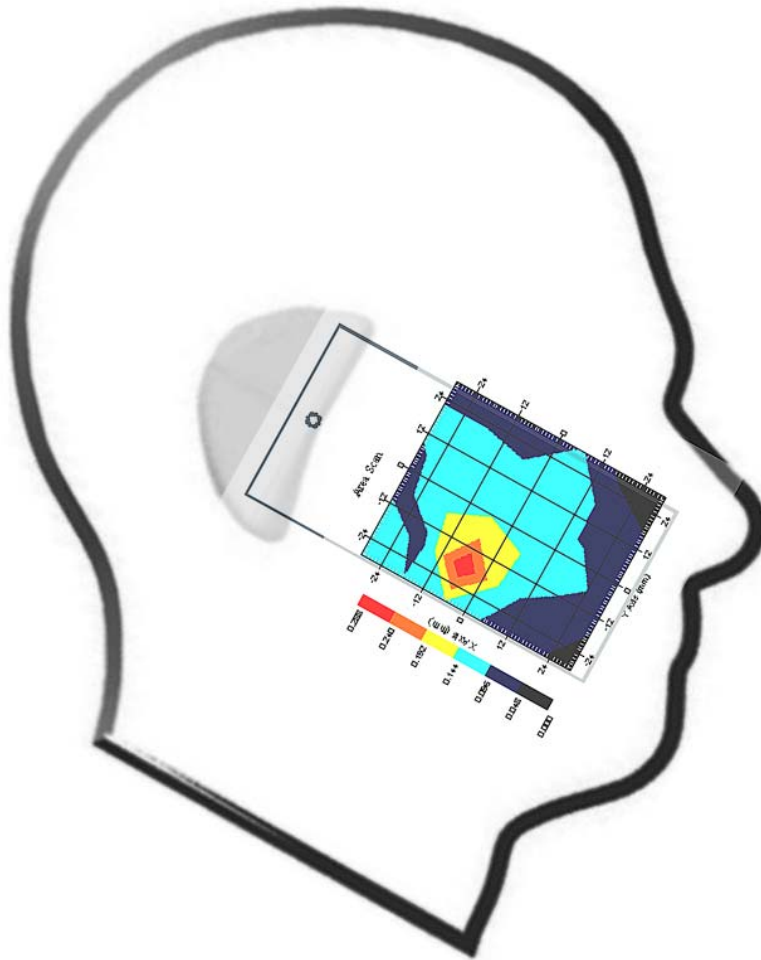
This is previous page plot (zoom in)



Measurement Data

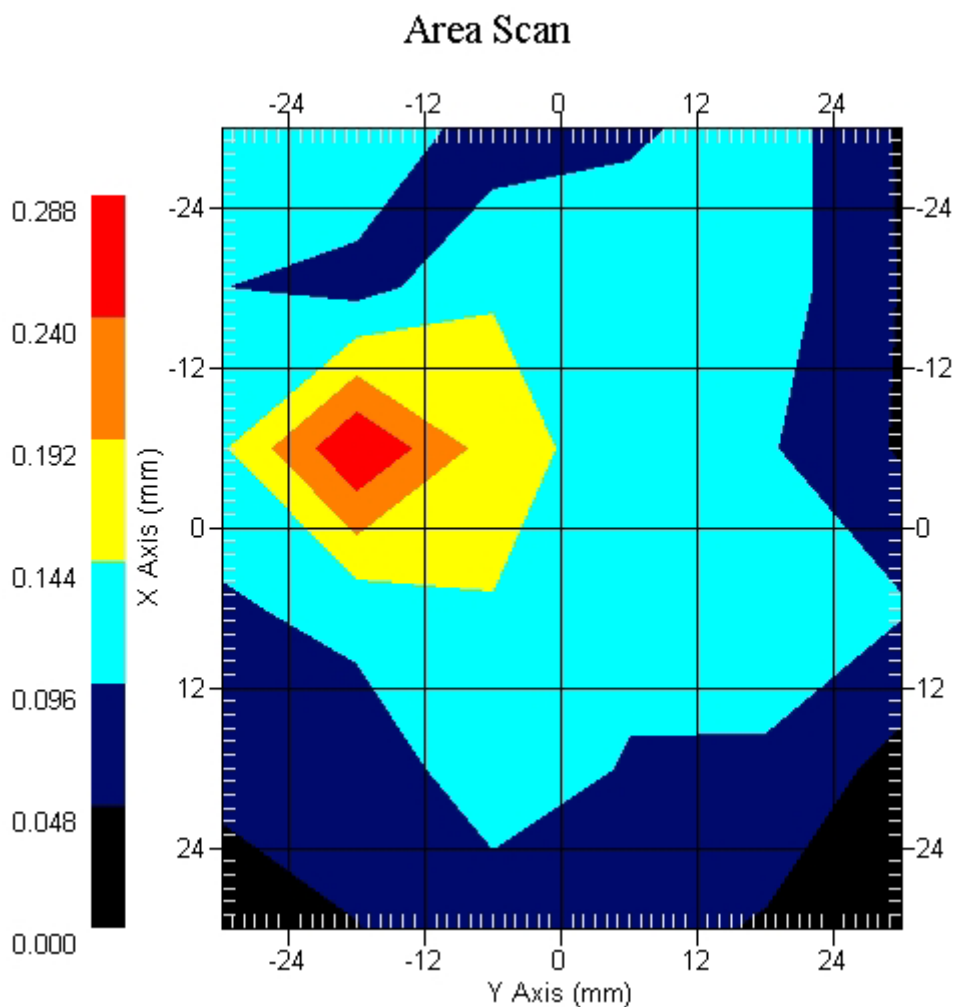
Crest Factor : 8
Tissue Temp. : 20.10 °C
Ambient Temp. : 21.30 °C
Area Scan : 6x6x1 : Measurement x=12mm, y=12mm, z=4mm
Zoom Scan : 7x7x7 : Measurement x=5mm, y=5mm, z=5mm
Power Drift-Start : 0.044 W/kg
Power Drift-Finish: 0.042 W/kg
Power Drift (%) : 4.545

DUT Position : Touch
Channel : 810



1 gram SAR value : 0.242 W/kg
10 gram SAR value : 0.145 W/kg
Area Scan Peak SAR : 0.286 W/kg
Zoom Scan Peak SAR : 0.810 W/kg

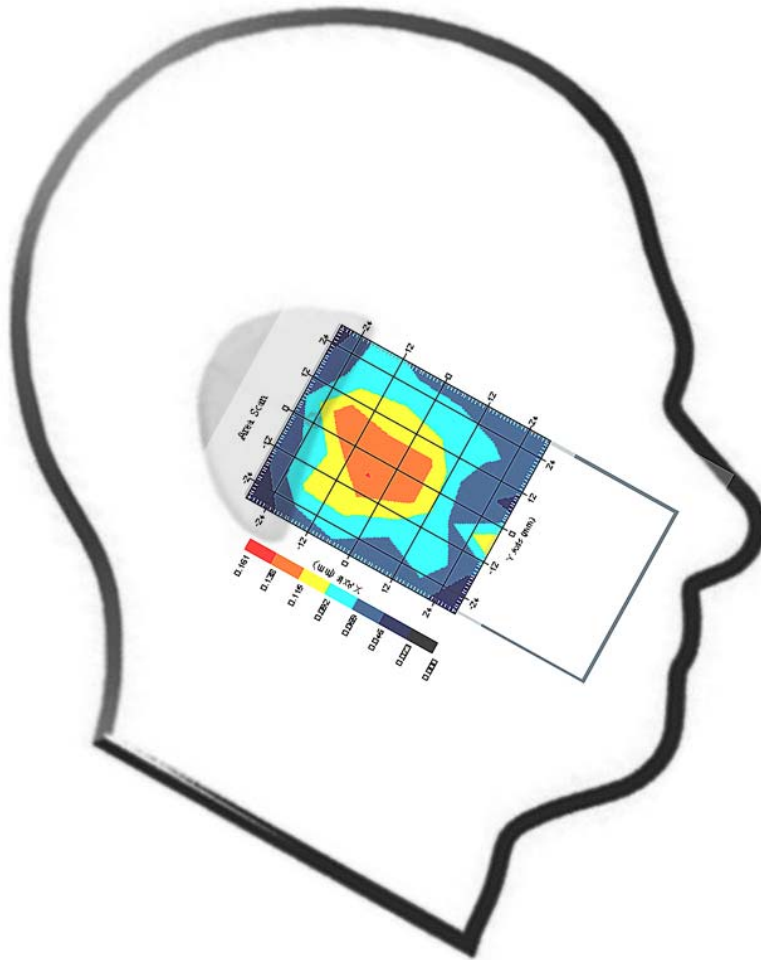
This is previous page plot (zoom in)



Measurement Data

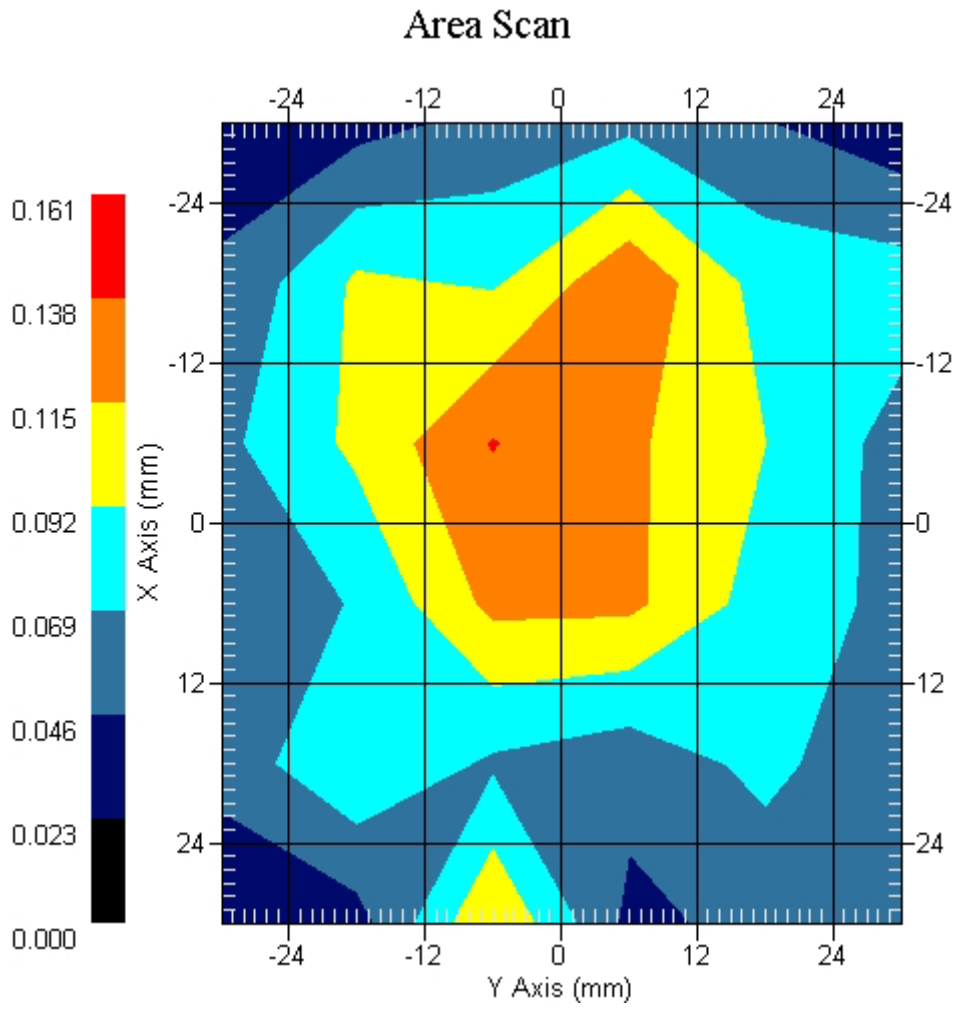
Crest Factor : 8
Tissue Temp. : 20.10 °C
Ambient Temp. : 21.30 °C
Area Scan : 6x6x1 : Measurement x=12mm, y=12mm, z=4mm
Zoom Scan : 7x7x7 : Measurement x=5mm, y=5mm, z=5mm
Power Drift-Start : 0.080 W/kg
Power Drift-Finish: 0.078 W/kg
Power Drift (%) : 2.500

DUT Position : 15° Tilt
Channel : 512



1 gram SAR value : 0.168 W/kg
10 gram SAR value : 0.156 W/kg
Area Scan Peak SAR : 0.139 W/kg
Zoom Scan Peak SAR : 0.340 W/kg

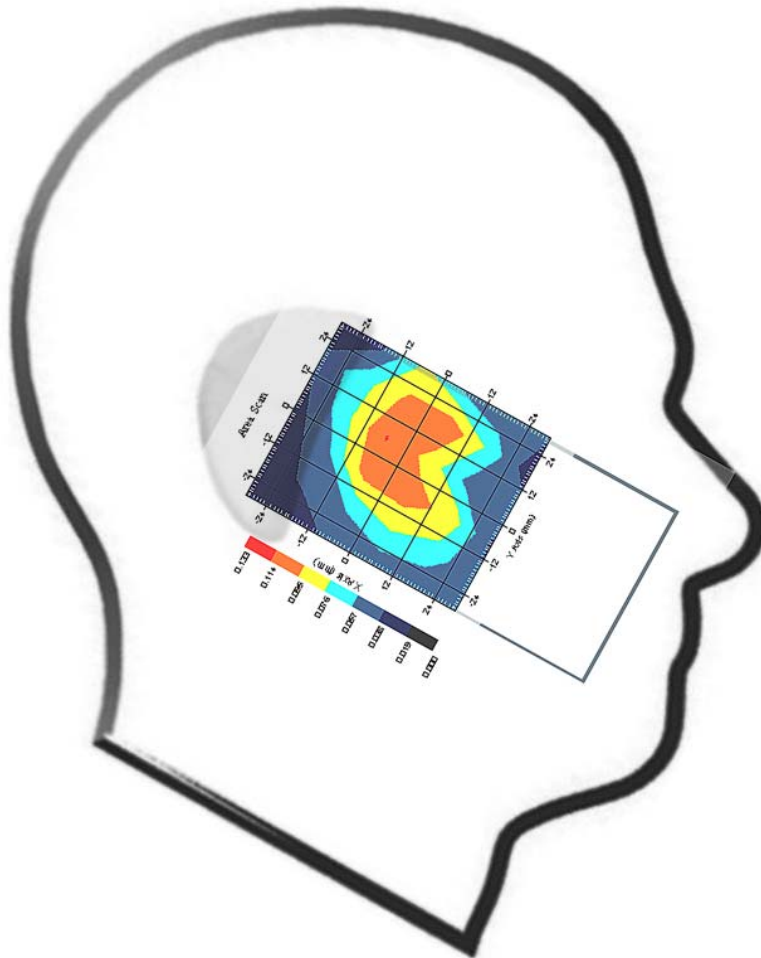
This is previous page plot (zoom in)



Measurement Data

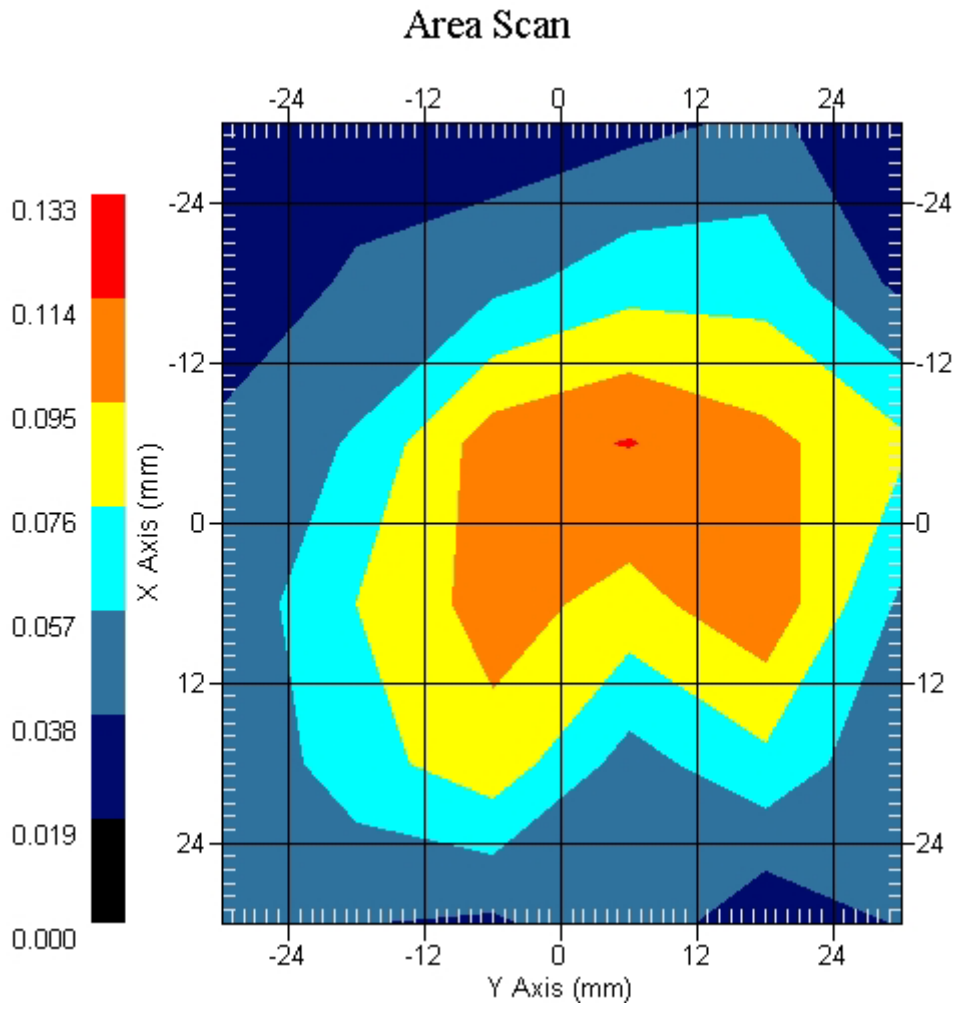
Crest Factor : 8
Tissue Temp. : 20.10 °C
Ambient Temp. : 21.30 °C
Area Scan : 6x6x1 : Measurement x=12mm, y=12mm, z=4mm
Zoom Scan : 7x7x7 : Measurement x=5mm, y=5mm, z=5mm
Power Drift-Start : 0.058 W/kg
Power Drift-Finish: 0.056 W/kg
Power Drift (%) : -3.448

DUT Position : 15° Tilt
Channel : 661



1 gram SAR value : 0.176 W/kg
10 gram SAR value : 0.118 W/kg
Area Scan Peak SAR : 0.115 W/kg
Zoom Scan Peak SAR : 0.360 W/kg

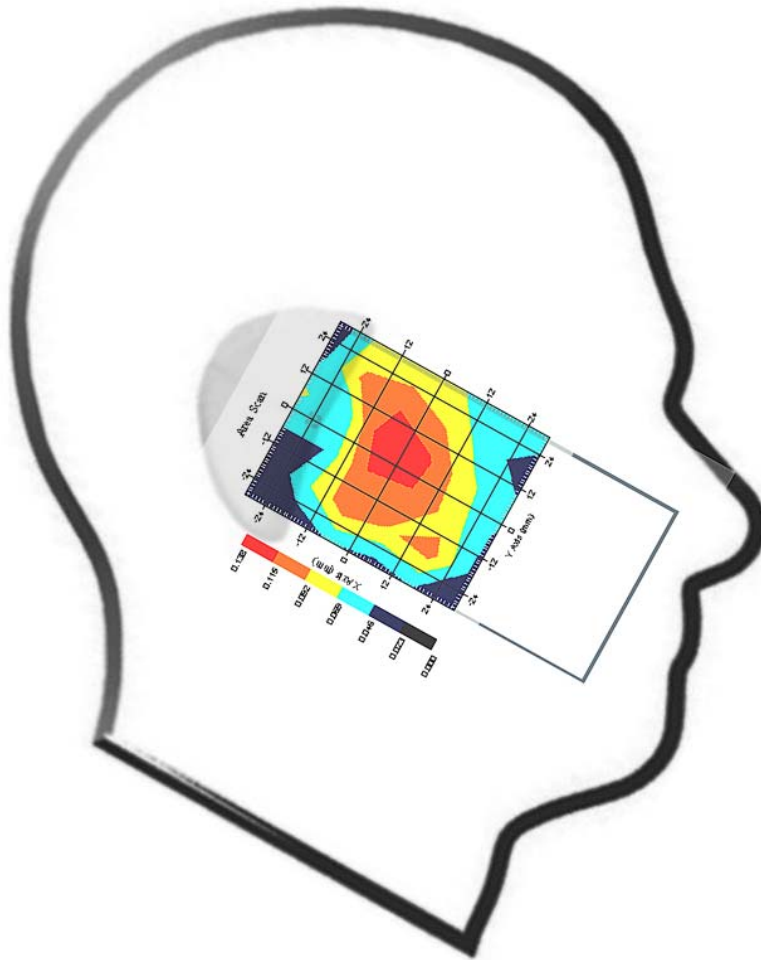
This is previous page plot (zoom in)



Measurement Data

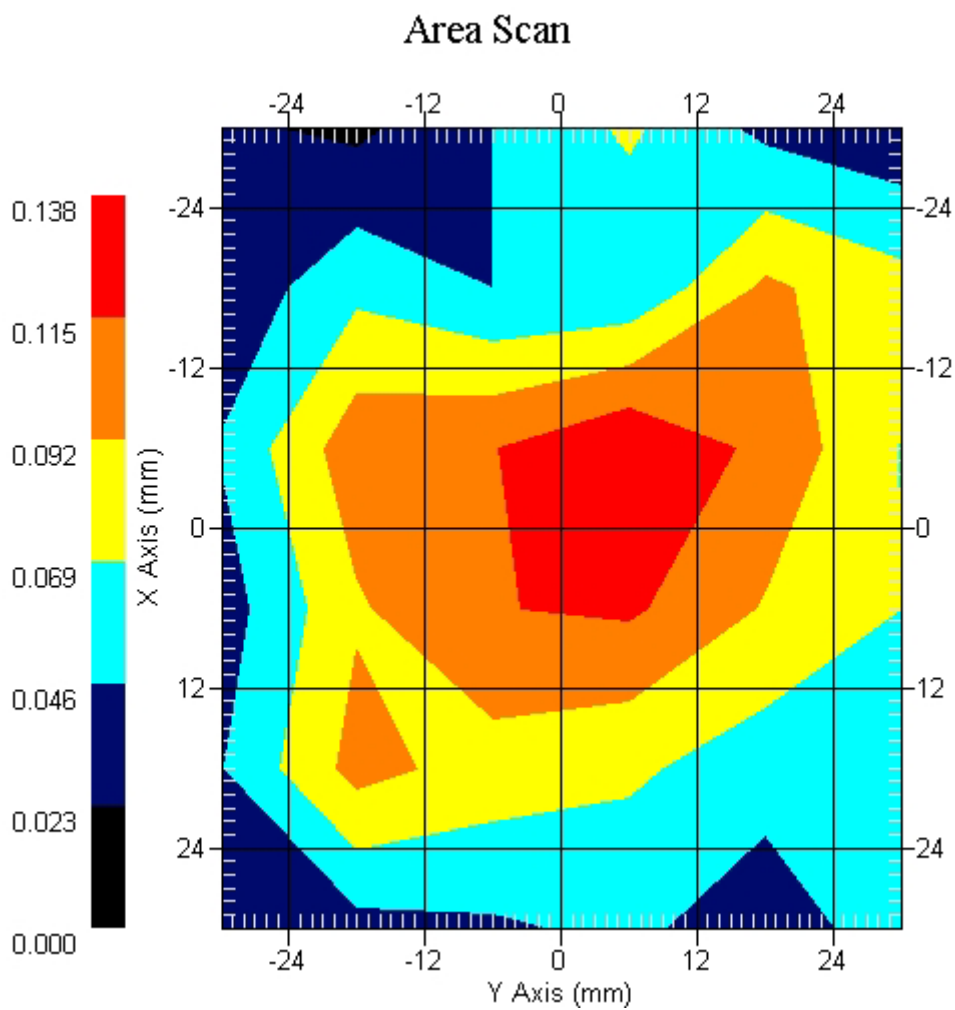
Crest Factor : 8
Tissue Temp. : 20.10 °C
Ambient Temp. : 21.30 °C
Area Scan : 6x6x1 : Measurement x=12mm, y=12mm, z=4mm
Zoom Scan : 7x7x7 : Measurement x=5mm, y=5mm, z=5mm
Power Drift-Start : 0.065 W/kg
Power Drift-Finish: 0.062 W/kg
Power Drift (%) : -4.615

DUT Position : 15° Tilt
Channel : 810



1 gram SAR value : 0.208 W/kg
10 gram SAR value : 0.124 W/kg
Area Scan Peak SAR : 0.137 W/kg
Zoom Scan Peak SAR : 0.000 W/kg

This is previous page plot (zoom in)



ALSAS-10U VER 2.3.6 APREL Laboratories

SAR Test Report

Report Date : 10-Mar-2008
Measurement Date : 10-Mar-2008

Product Data

Device Name : GIGA
Type : Std Form Cell Phone
Model : Atom V
Frequency : 1900.00 MHz
Max. Transmit Pwr : 1 W
Drift Time : 0 min(s)
Length : 116.1 mm
Width : 59.5 mm
Depth : 15.5 mm
Antenna Type : Internal

Phantom Data

Type : SAM-Right
Size (mm) : 280 x 280 x 280
Location : Right

Tissue Data

Type : HEAD
Serial No. : 324-H
Frequency : 1900.00 MHz
Last Calib. Date : 10-Mar-2008
Temperature : 20.10 °C
Ambient Temp. : 21.30 °C
Humidity : 48.00 RH%
Epsilon : 40.12 F/m
Sigma : 1.43 S/m
Density : 1000.00 kg/cu. m

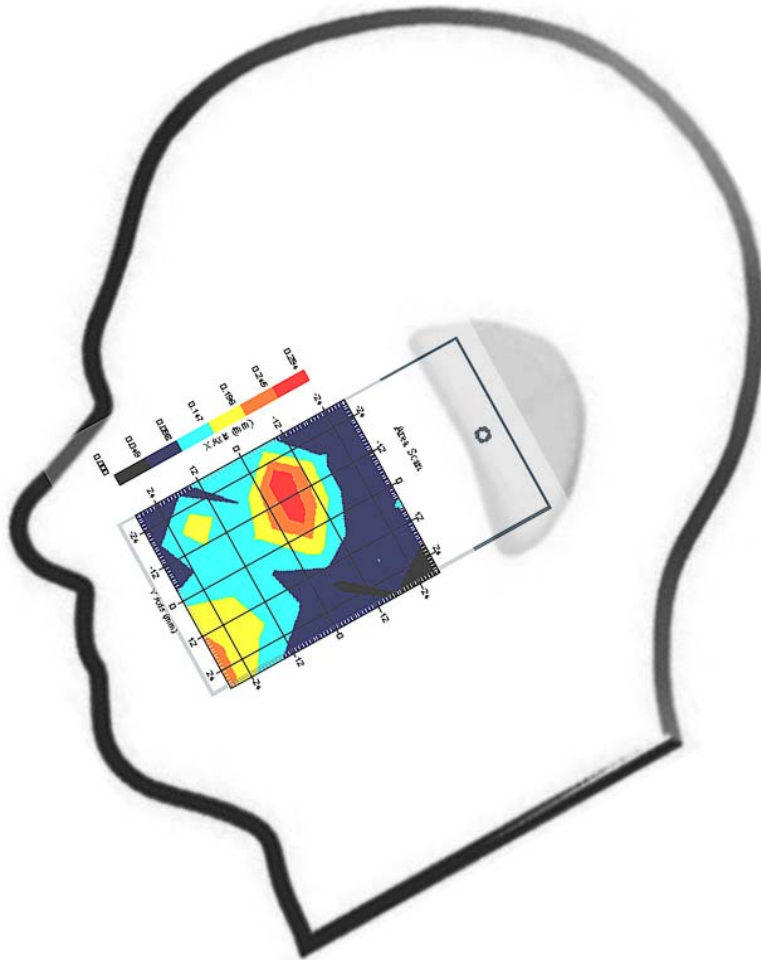
Probe Data

Name : Probe 264
Model : E020
Type : E-Field Triangle
Serial No. : 264
Last Calib. Date : 21-Aug-2007
Frequency : 1900.00 MHz
Duty Cycle Factor: 8
Conversion Factor: 5.5
Probe Sensitivity: 1.20 1.20 1.20 $\mu\text{V}/(\text{V}/\text{m})^2$
Compression Point: 95.00 mV
Offset : 1.56 mm

Measurement Data

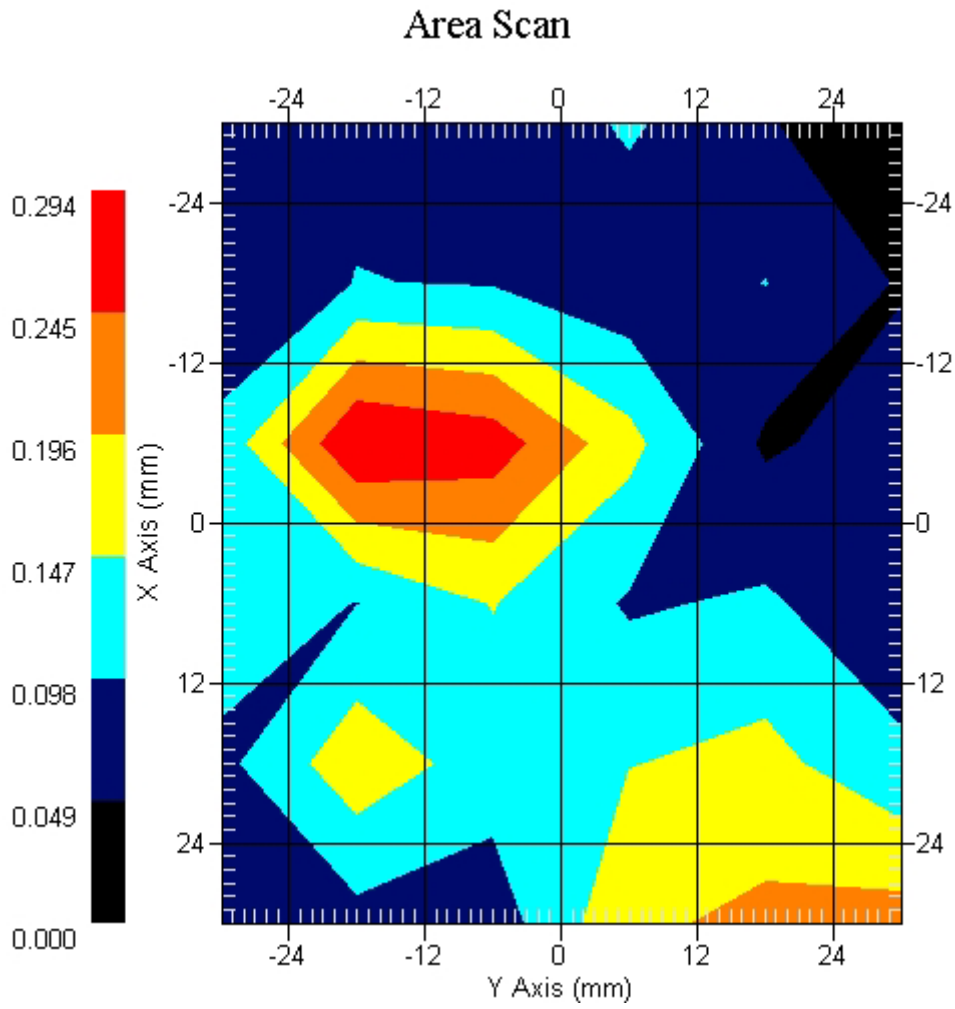
Crest Factor : 8
Tissue Temp. : 20.10 °C
Ambient Temp. : 21.30 °C
Area Scan : 6x6x1 : Measurement x=12mm, y=12mm, z=4mm
Zoom Scan : 7x7x7 : Measurement x=5mm, y=5mm, z=5mm
Power Drift-Start : 0.072 W/kg
Power Drift-Finish: 0.075 W/kg
Power Drift (%) : 4.166

DUT Position : Touch
Channel : 512



1 gram SAR value : 0.232 W/kg
10 gram SAR value : 0.145 W/kg
Area Scan Peak SAR : 0.294 W/kg
Zoom Scan Peak SAR : 0.350 W/kg

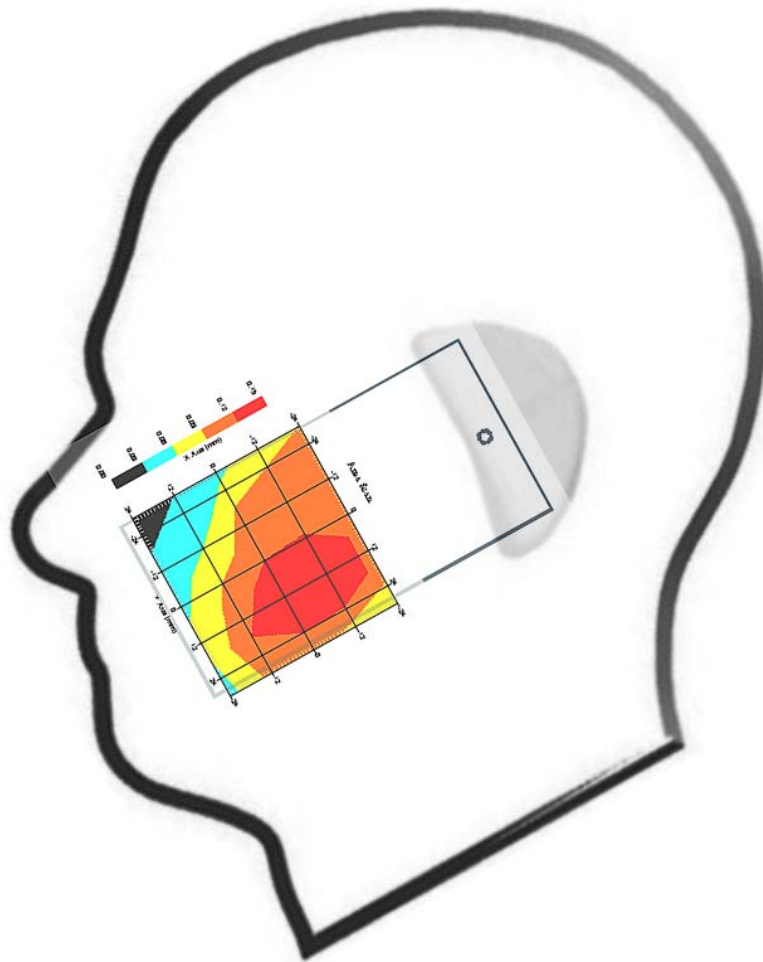
This is previous page plot (zoom in)



Measurement Data

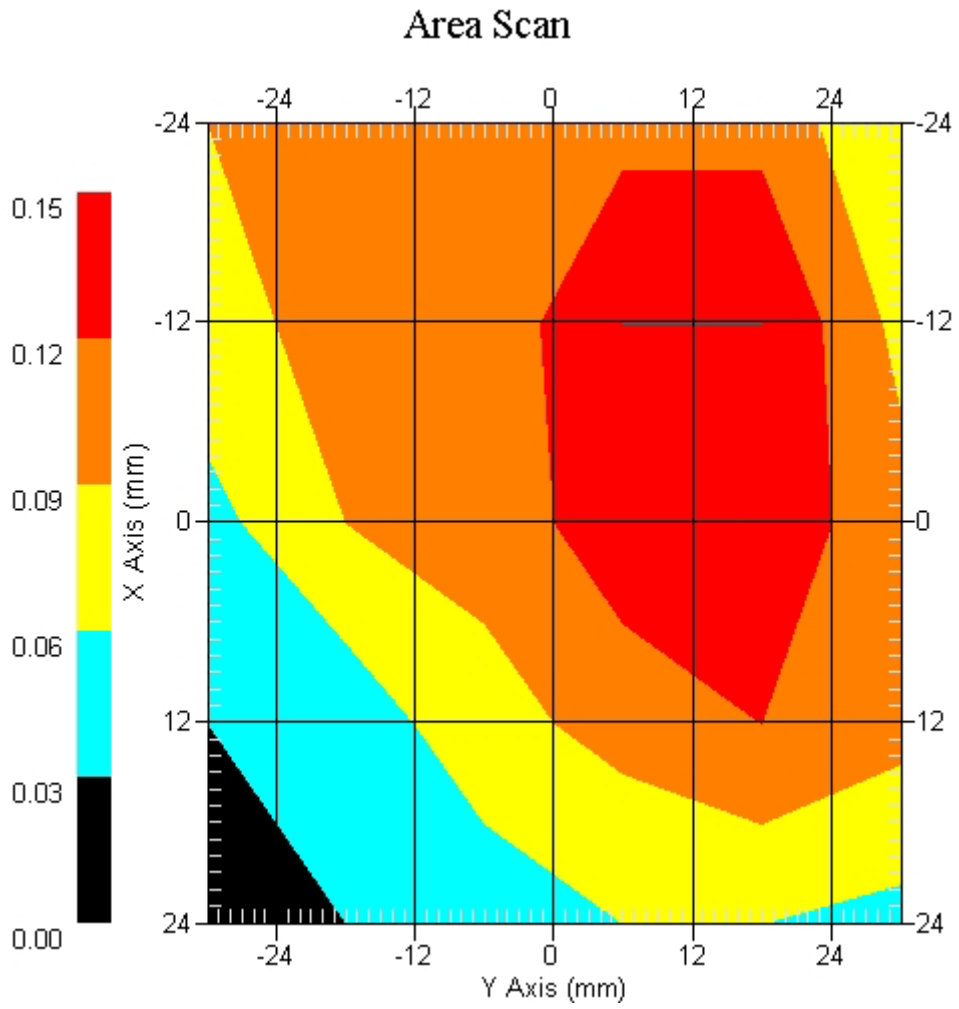
Crest Factor : 8
 Tissue Temp. : 20.10 °C
 Ambient Temp. : 21.30 °C
 Area Scan : 5x6x1 : Measurement x=12mm, y=12mm, z=4mm
 Zoom Scan : 7x7x7 : Measurement x=5mm, y=5mm, z=5mm
 Power Drift-Start : 0.033 W/kg
 Power Drift-Finish: 0.033 W/kg
 Power Drift (%) : 0.007

DUT Position : Touch
 Channel : 661



1 gram SAR value : 0.185 W/kg
 10 gram SAR value : 0.132 W/kg
 Area Scan Peak SAR : 0.198 W/kg
 Zoom Scan Peak SAR : 0.342 W/kg

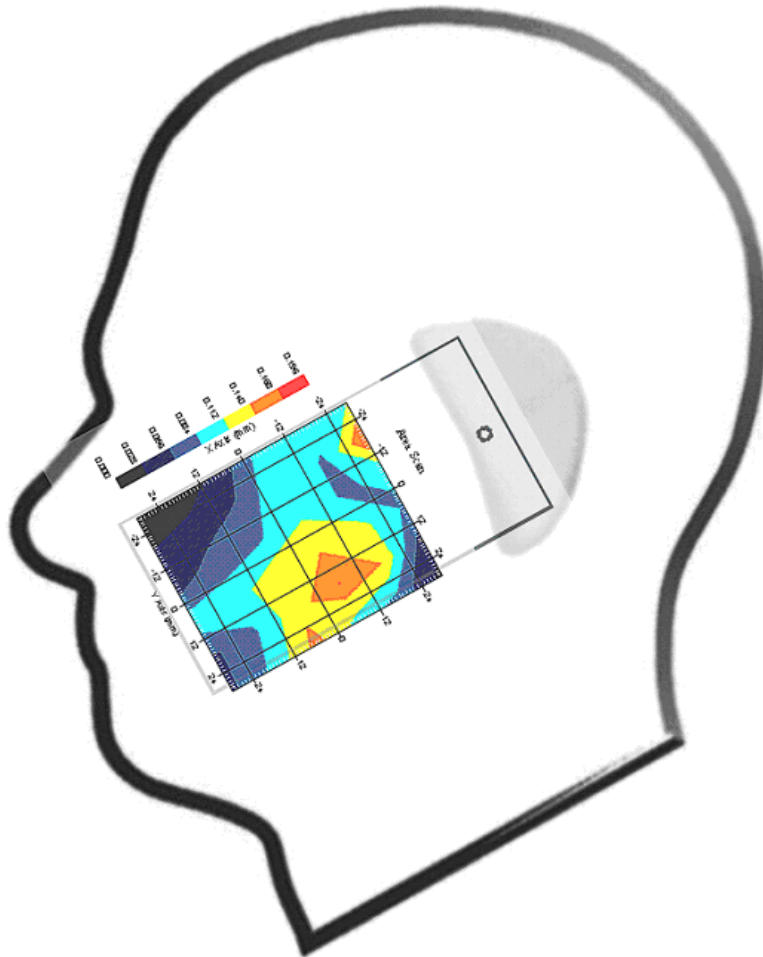
This is previous page plot (zoom in)



Measurement Data

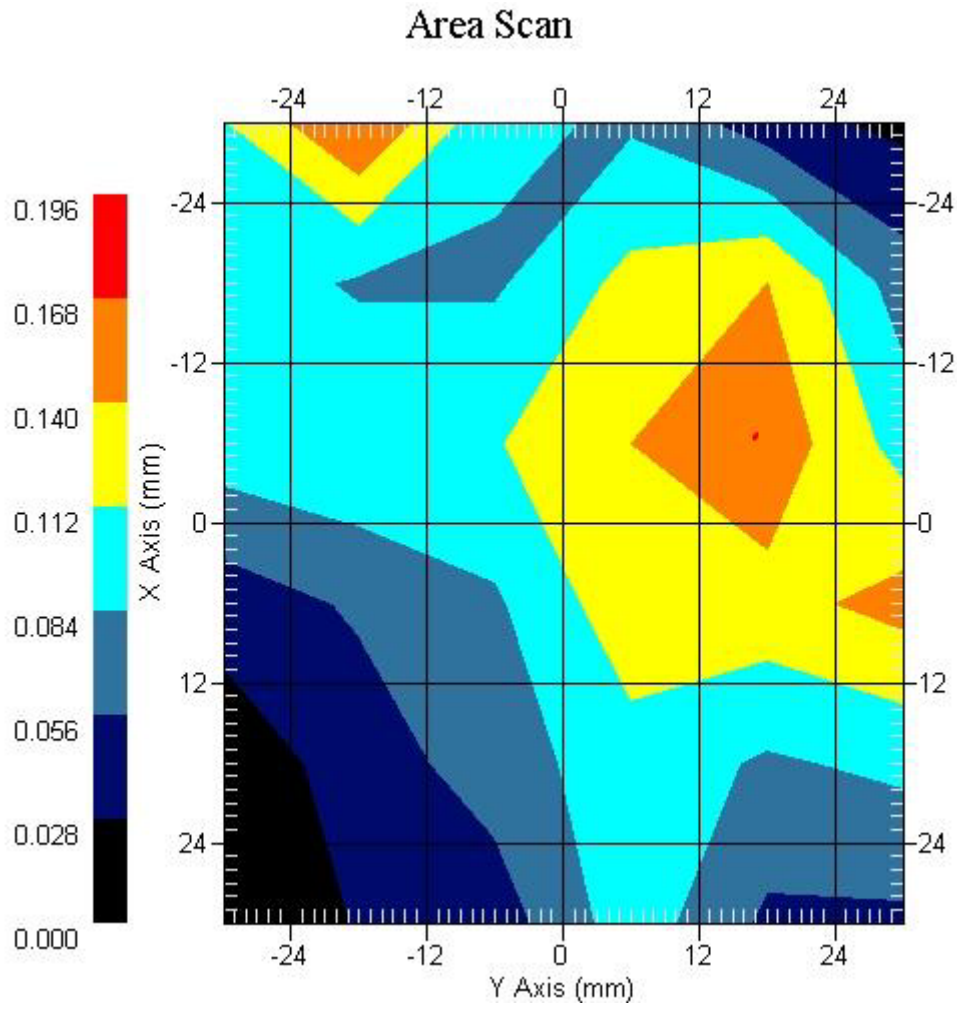
Crest Factor : 8
Tissue Temp. : 20.10 °C
Ambient Temp. : 21.30 °C
Area Scan : 6x6x1 : Measurement x=12mm, y=12mm, z=4mm
Zoom Scan : 7x7x7 : Measurement x=5mm, y=5mm, z=5mm
Power Drift-Start : 0.029 W/kg
Power Drift-Finish: 0.029 W/kg
Power Drift (%) : 0.186

DUT Position : Touch
Channel : 810



1 gram SAR value : 0.172 W/kg
10 gram SAR value : 0.119 W/kg
Area Scan Peak SAR : 0.177 W/kg
Zoom Scan Peak SAR : 0.321 W/kg

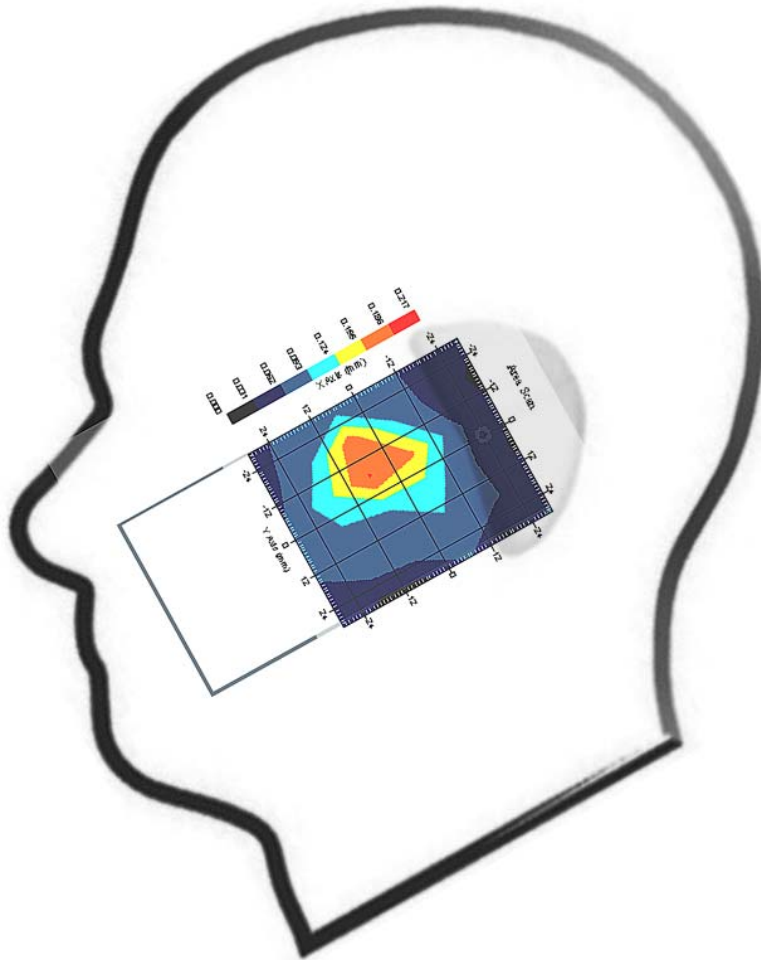
This is previous page plot (zoom in)



Measurement Data

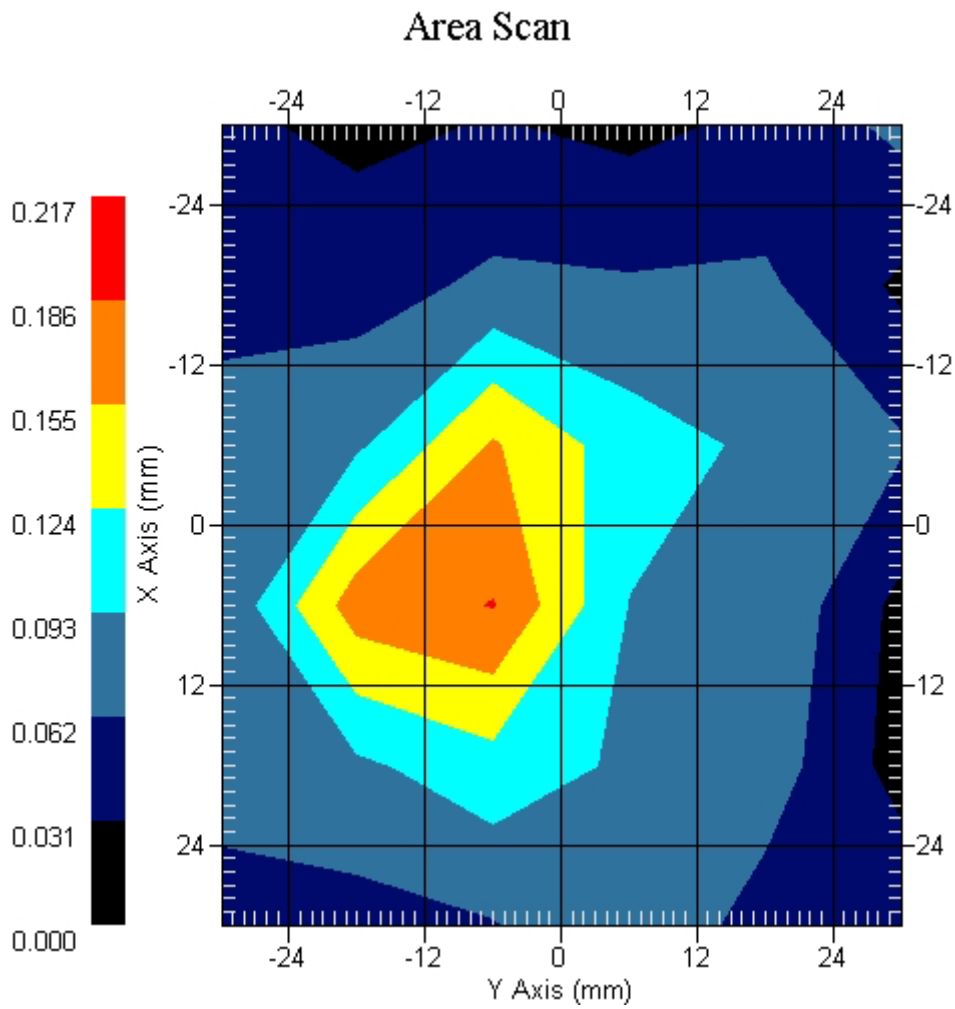
Crest Factor : 8
Tissue Temp. : 20.10 °C
Ambient Temp. : 21.30 °C
Area Scan : 6x6x1 : Measurement x=12mm, y=12mm, z=4mm
Zoom Scan : 7x7x7 : Measurement x=5mm, y=5mm, z=5mm
Power Drift-Start : 0.069 W/kg
Power Drift-Finish: 0.071 W/kg
Power Drift (%) : 2.898

DUT Position : 15° Tilt
Channel : 512



1 gram SAR value : 0.208 W/kg
10 gram SAR value : 0.134 W/kg
Area Scan Peak SAR : 0.187 W/kg
Zoom Scan Peak SAR : 0.420 W/kg

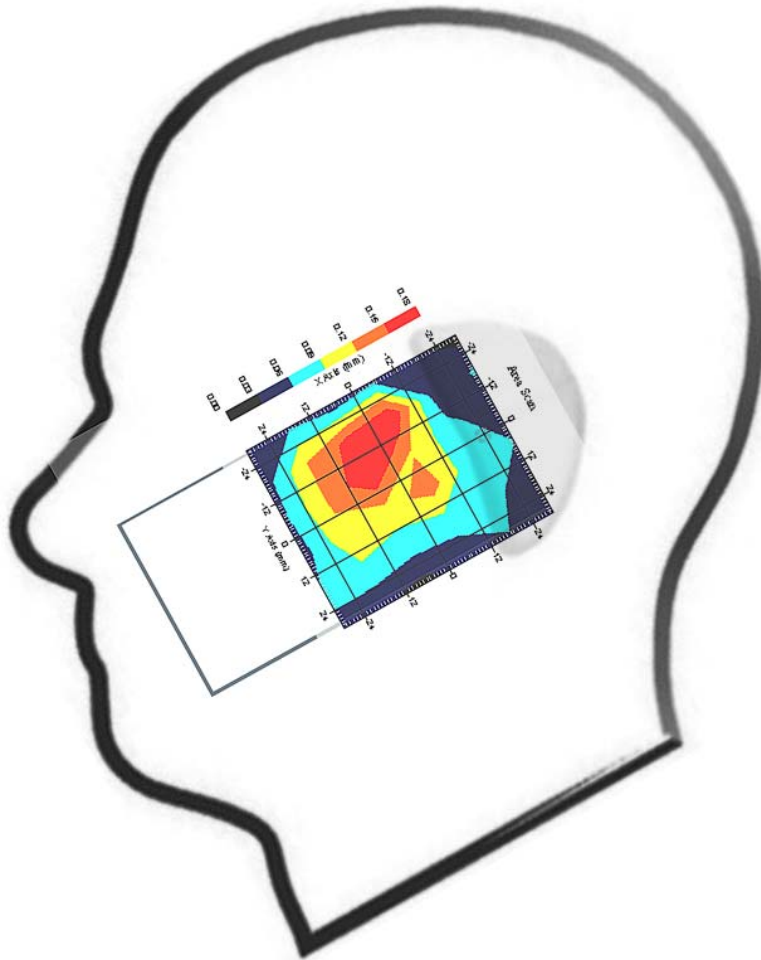
This is previous page plot (zoom in)



Measurement Data

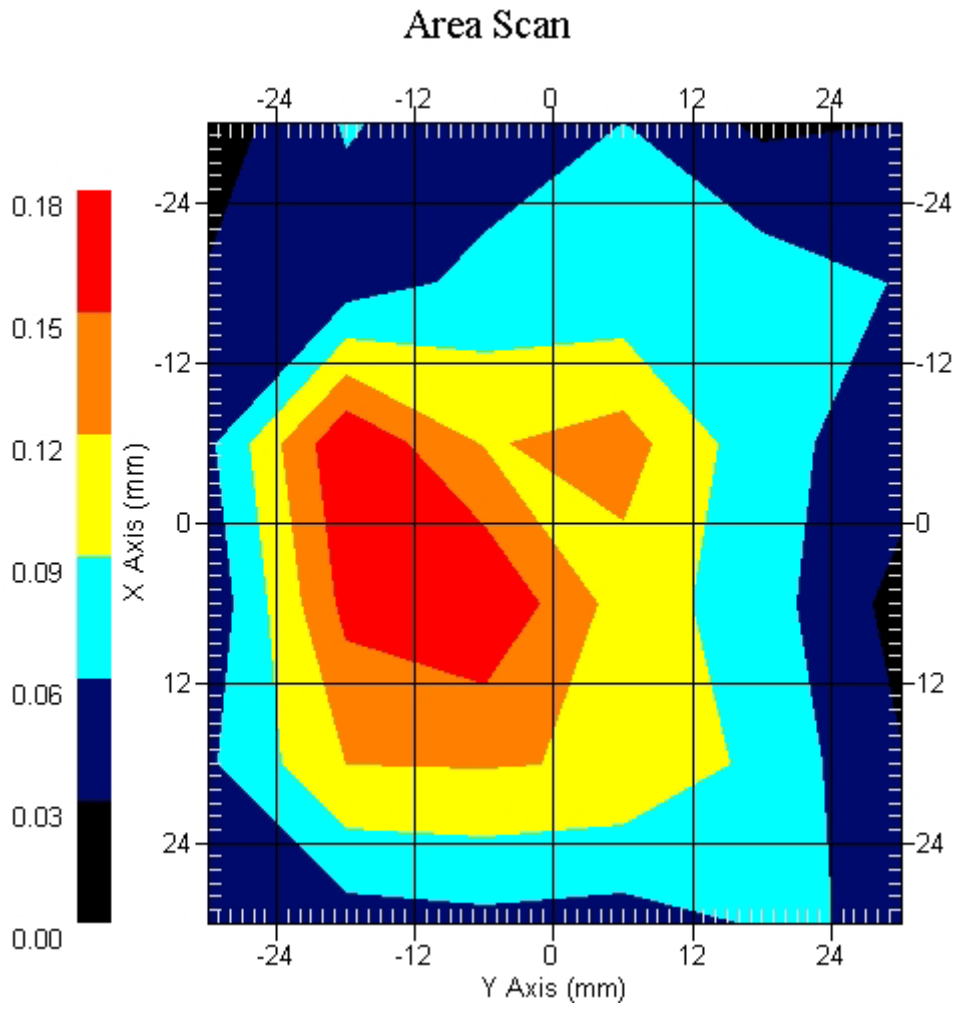
Crest Factor : 8
Tissue Temp. : 20.10 °C
Ambient Temp. : 21.30 °C
Area Scan : 6x6x1 : Measurement x=12mm, y=12mm, z=4mm
Zoom Scan : 7x7x7 : Measurement x=5mm, y=5mm, z=5mm
Power Drift-Start : 0.061 W/kg
Power Drift-Finish: 0.063 W/kg
Power Drift (%) : 3.278

DUT Position : 15° Tilt
Channel : 661



1 gram SAR value : 0.153 W/kg
10 gram SAR value : 0.142 W/kg
Area Scan Peak SAR : 0.179 W/kg
Zoom Scan Peak SAR : 0.290 W/kg

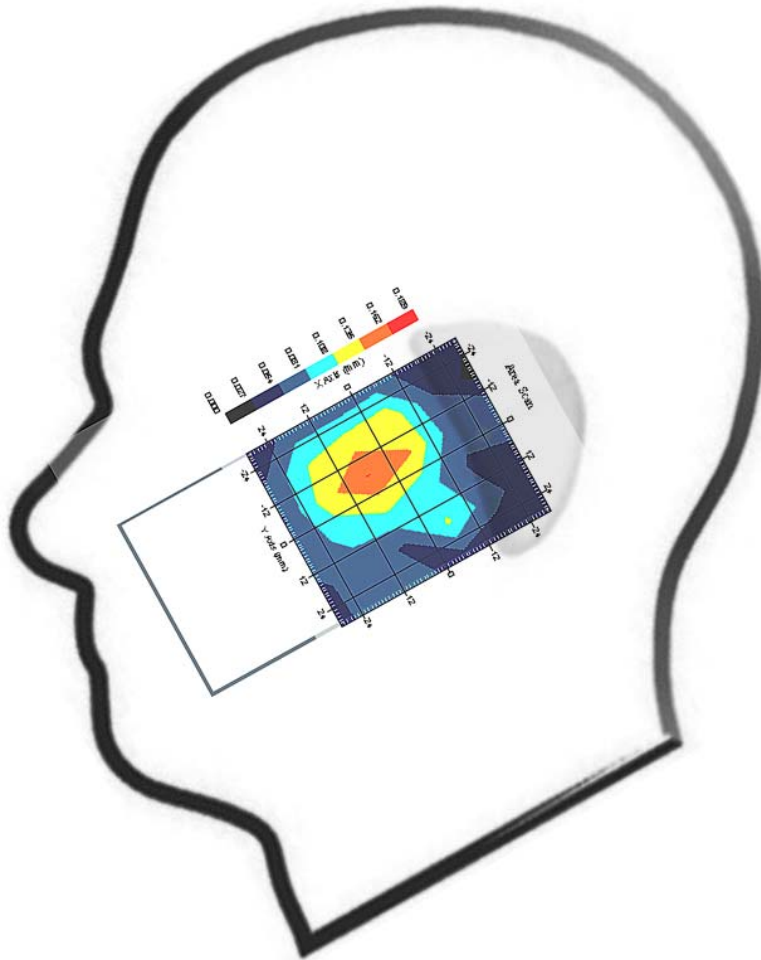
This is previous page plot (zoom in)



Measurement Data

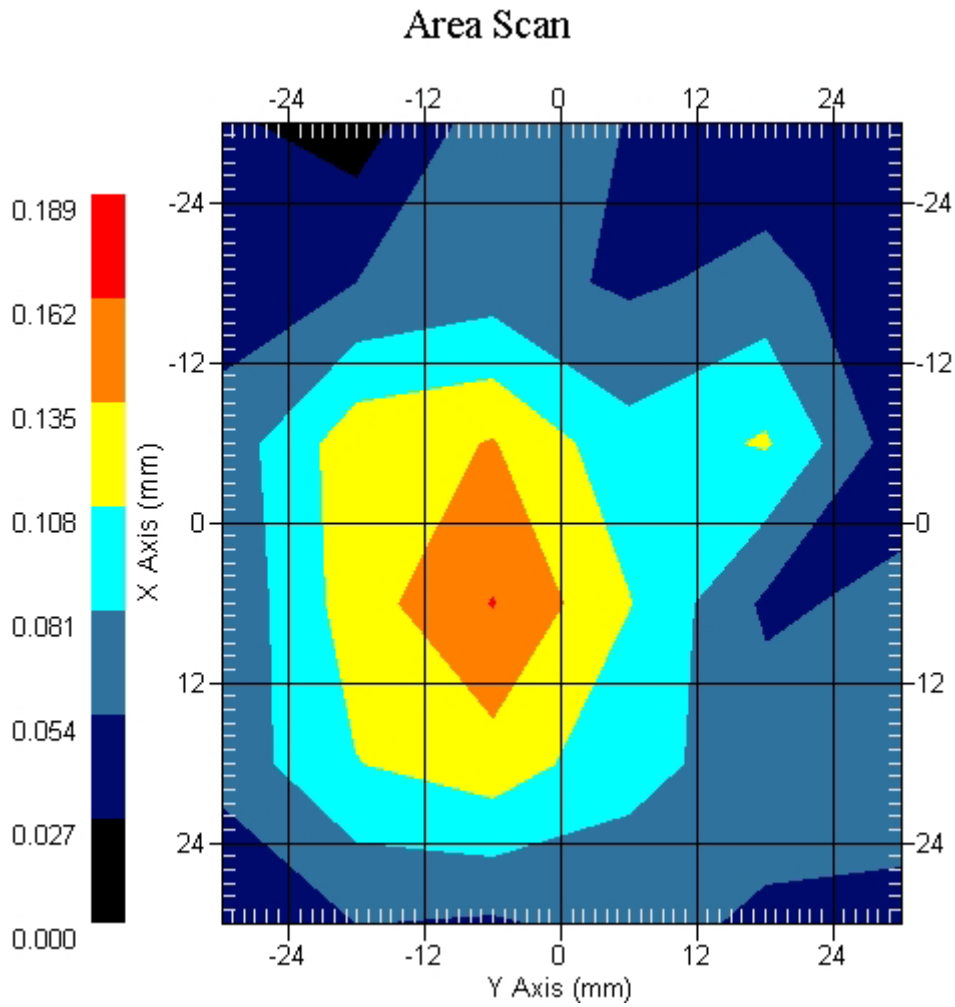
Crest Factor : 8
Tissue Temp. : 20.10 °C
Ambient Temp. : 21.30 °C
Area Scan : 6x6x1 : Measurement x=12mm, y=12mm, z=4mm
Zoom Scan : 7x7x7 : Measurement x=5mm, y=5mm, z=5mm
Power Drift-Start : 0.071 W/kg
Power Drift-Finish: 0.070 W/kg
Power Drift (%) : 1.408

DUT Position : 15° Tilt
Channel : 810



1 gram SAR value : 0.223 W/kg
10 gram SAR value : 0.128 W/kg
Area Scan Peak SAR : 0.163 W/kg
Zoom Scan Peak SAR : 0.570 W/kg

This is previous page plot (zoom in)



ALSAS-10U VER 2.3.6 APREL Laboratories
SAR Test ReportReport Date : 10-Mar-2008
Measurement Date : 10-Mar-2008

Product Data

Device Name : GIGA
Type : Std Form Cell Phone
Model : Atom V
Frequency : 1900.00 MHz
Max. Transmit Pwr : 1 W
Drift Time : 0 min(s)
Length : 116.1 mm
Width : 59.5 mm
Depth : 15.5 mm
Antenna Type : Internal

Phantom Data

Type : Uni-Phantom
Size (mm) : 280 x 280 x 200
Location : Center

Tissue Data

Type : BODY
Serial No. : 324-B
Frequency : 1900.00 MHz
Last Calib. Date : 10-Mar-2008
Temperature : 20.10 °C
Ambient Temp. : 21.30 °C
Humidity : 48.00 RH%
Epsilon : 54.21 F/m
Sigma : 1.53 S/m
Density : 1000.00 kg/cu. m

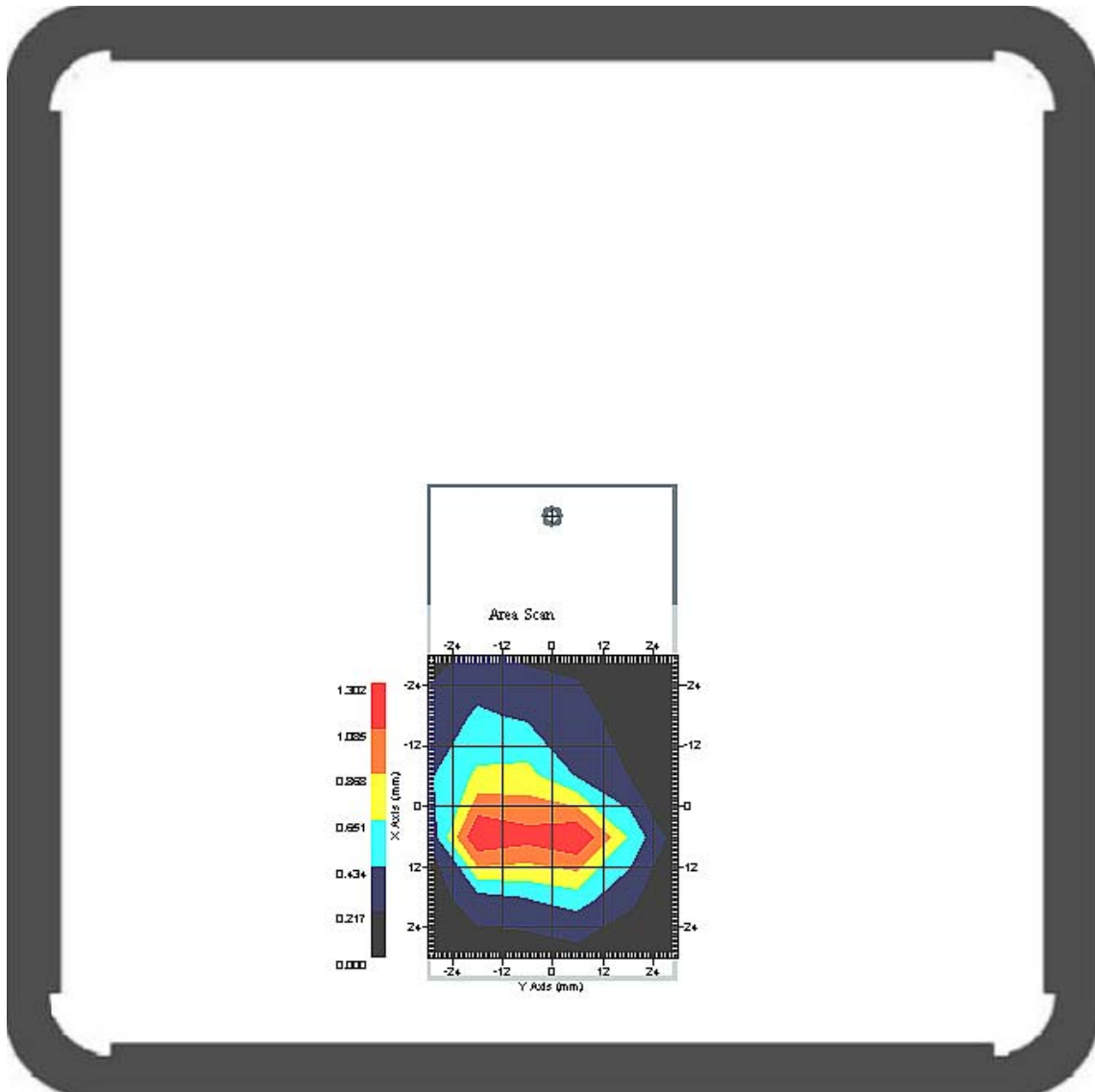
Probe Data

Name : Probe 264
Model : E020
Type : E-Field Triangle
Serial No. : 264
Last Calib. Date : 21-Aug-2007
Frequency : 1900.00 MHz
Duty Cycle Factor: 8
Conversion Factor: 5.75
Probe Sensitivity: 1.20 1.20 1.20 $\mu\text{V}/(\text{V}/\text{m})^2$
Compression Point: 95.00 mV
Offset : 1.56 mm

Measurement Data

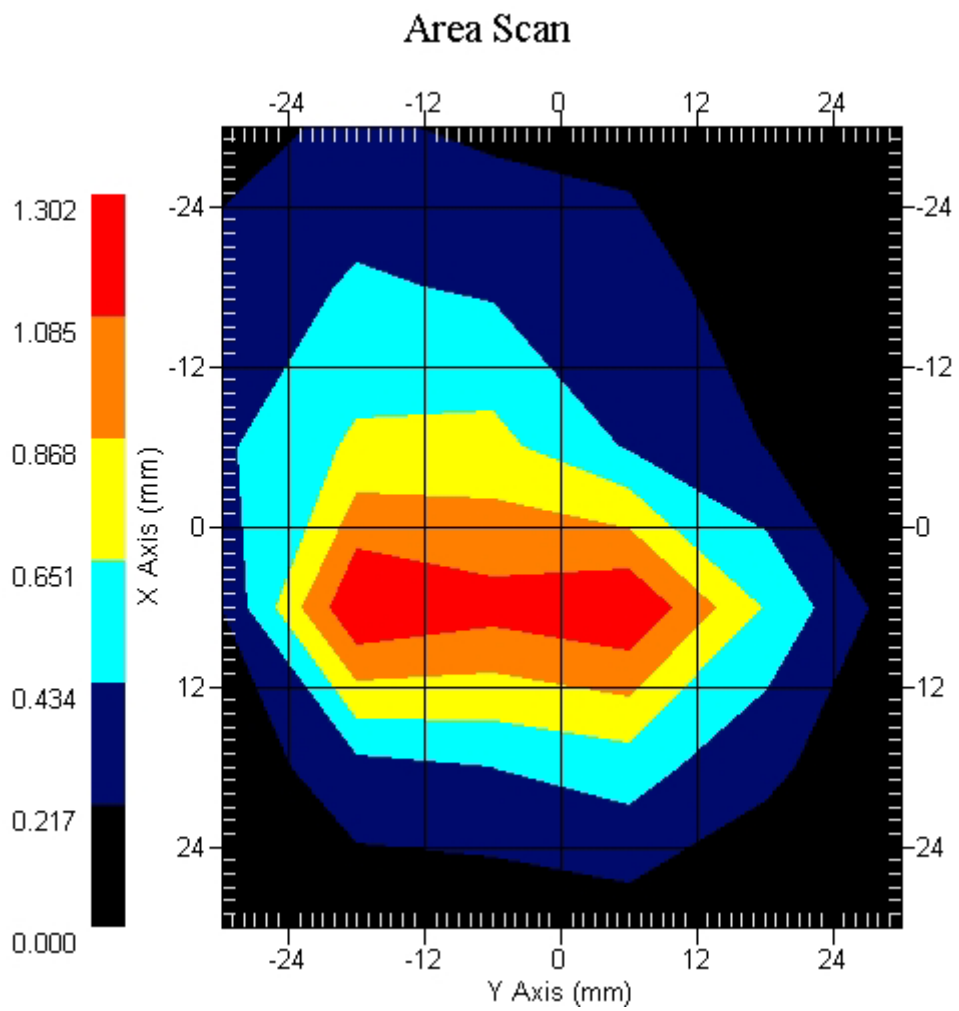
Crest Factor : 8
Tissue Temp. : 20.10 °C
Ambient Temp. : 21.30 °C
Area Scan : 6x6x1 : Measurement x=12mm, y=12mm, z=4mm
Zoom Scan : 7x7x7 : Measurement x=5mm, y=5mm, z=5mm
Power Drift-Start : 0.184 W/kg
Power Drift-Finish: 0.182 W/kg
Power Drift (%) : -1.086

DUT Position : Touch
Channel : 512



1 gram SAR value : 1.304 W/kg
10 gram SAR value : 0.659 W/kg
Area Scan Peak SAR : 1.300 W/kg
Zoom Scan Peak SAR : 2.522 W/kg

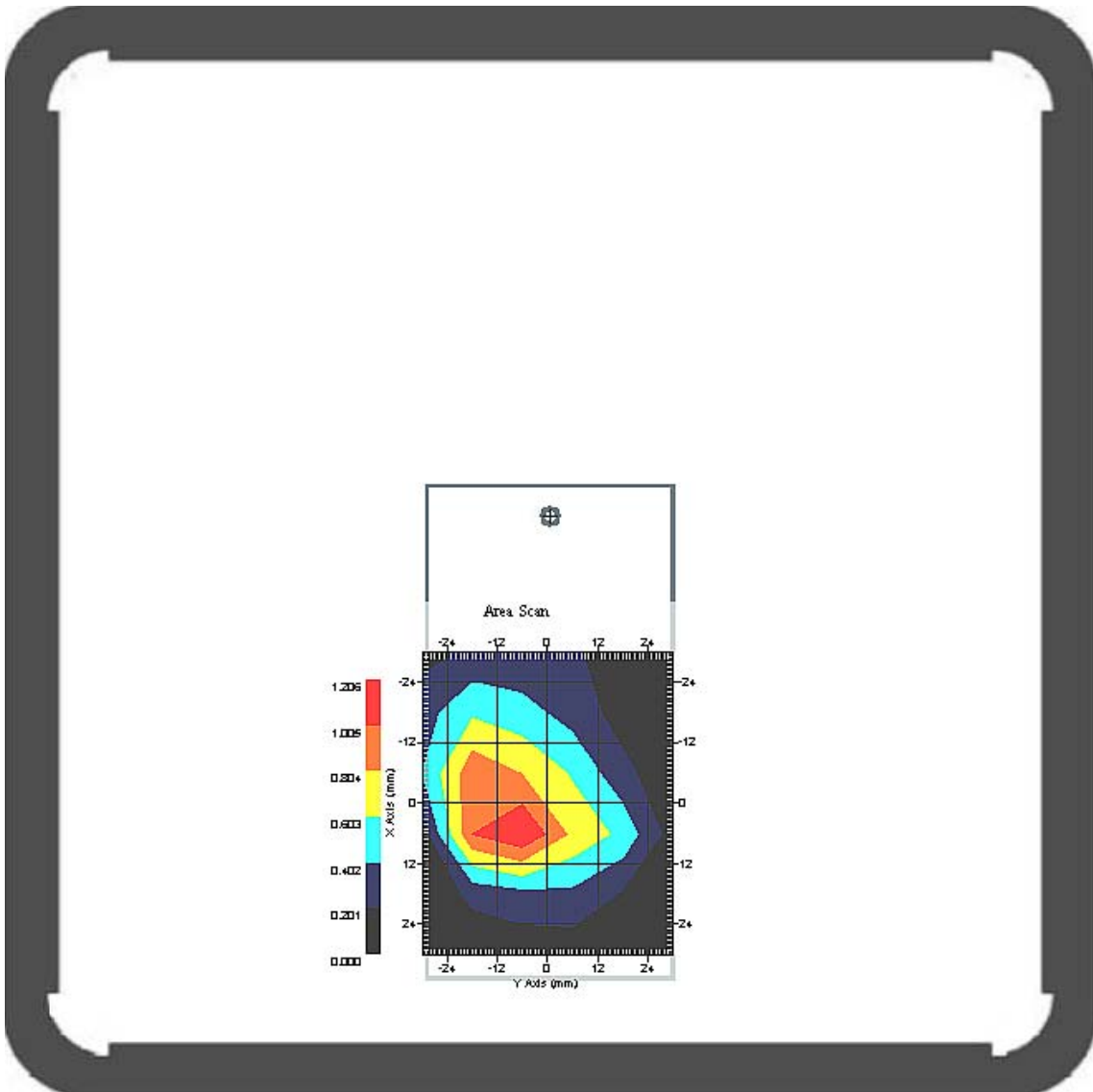
This is previous page plot (zoom in)



Measurement Data

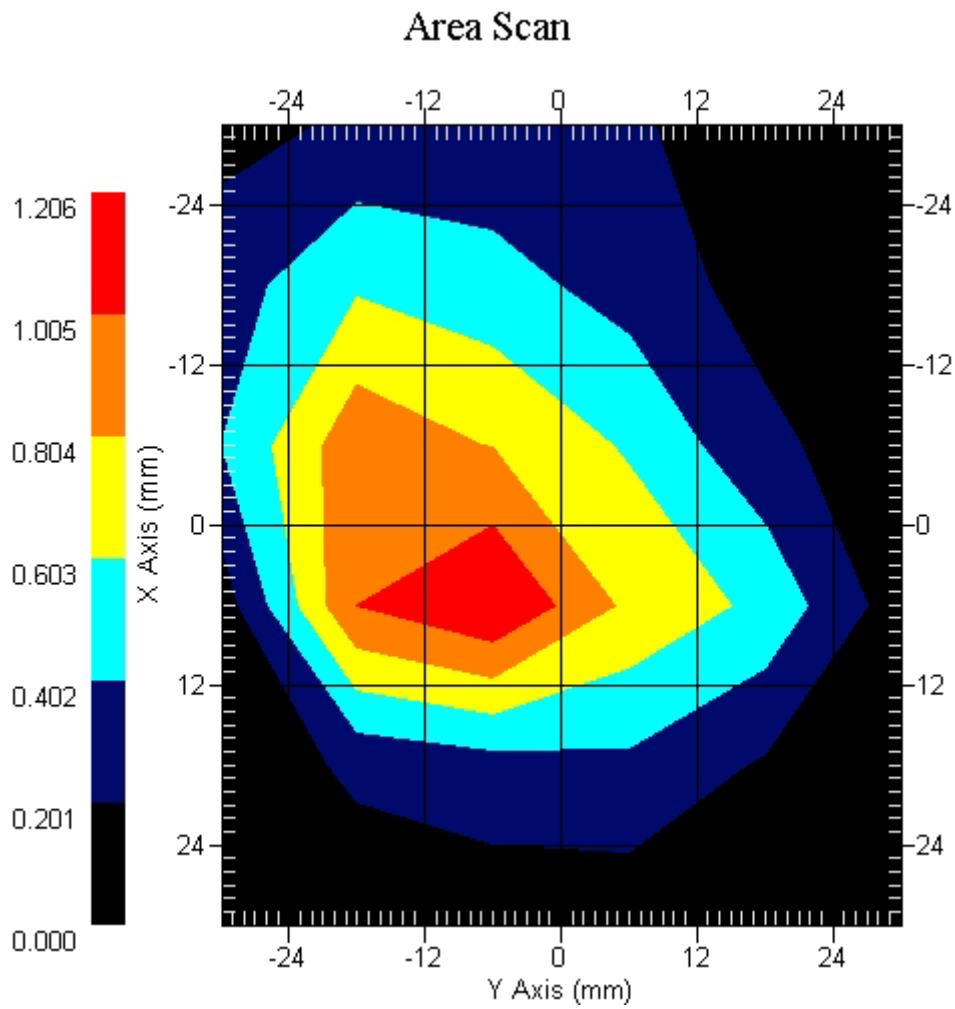
Crest Factor : 8
 Tissue Temp. : 20.10 °C
 Ambient Temp. : 21.30 °C
 Area Scan : 6x6x1 : Measurement x=12mm, y=12mm, z=4mm
 Zoom Scan : 7x7x7 : Measurement x=5mm, y=5mm, z=5mm
 Power Drift-Start : 0.190 W/kg
 Power Drift-Finish: 0.187 W/kg
 Power Drift (%) : -1.578

DUT Position : Touch
 Channel : 661



1 gram SAR value : 0.952 W/kg
 10 gram SAR value : 0.489 W/kg
 Area Scan Peak SAR : 1.206 W/kg
 Zoom Scan Peak SAR : 2.021 W/kg

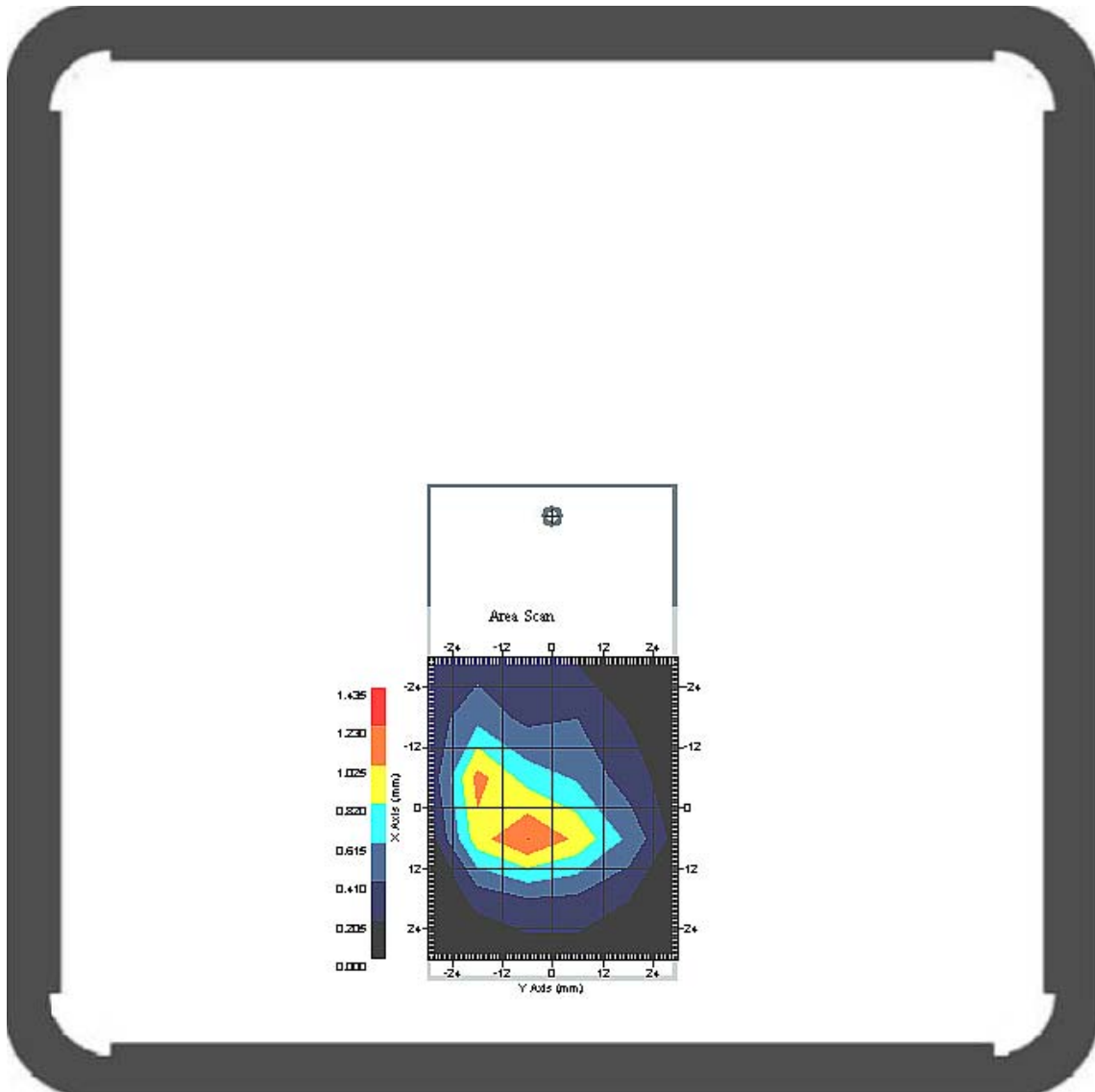
This is previous page plot (zoom in)



Measurement Data

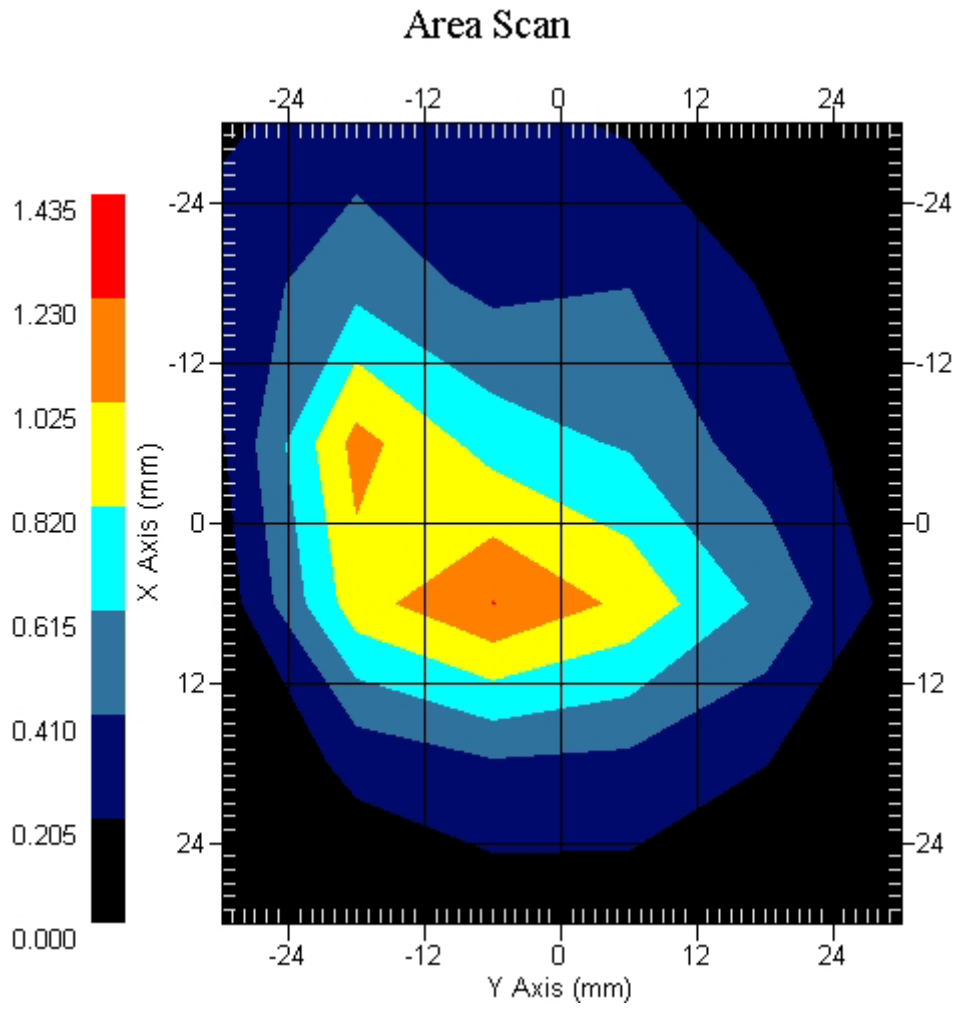
Crest Factor : 8
Tissue Temp. : 20.10 °C
Ambient Temp. : 21.30 °C
Area Scan : 6x6x1 : Measurement x=12mm, y=12mm, z=4mm
Zoom Scan : 7x7x7 : Measurement x=5mm, y=5mm, z=5mm
Power Drift-Start : 0.200 W/kg
Power Drift-Finish: 0.195 W/kg
Power Drift (%) : -2.362

DUT Position : Touch
Channel : 810



1 gram SAR value : 0.995 W/kg
10 gram SAR value : 0.495 W/kg
Area Scan Peak SAR : 1.232 W/kg
Zoom Scan Peak SAR : 1.971 W/kg

This is previous page plot (zoom in)



ALSAS-10U VER 2.3.6 APREL Laboratories
SAR Test Report-PCS 1900 GPRSReport Date : 10-Apr-2008
Measurement Date : 10-Apr-2008

Product Data

Device Name : GIGA
Type : Std Form Cell Phone
Model : Atom V
Frequency : 1900.00 MHz
Max. Transmit Pwr : 1 W
Drift Time : 0 min(s)
Length : 116.1 mm
Width : 59.5 mm
Depth : 15.5 mm
Antenna Type : Internal

Phantom Data

Type : Uni-Phantom
Size (mm) : 280 x 280 x 200
Location : Center

Tissue Data

Type : BODY
Serial No. : 324-B
Frequency : 1900.00 MHz
Last Calib. Date : 10-Mar-2007
Temperature : 20.10 °C
Ambient Temp. : 21.30 °C
Humidity : 48.00 RH%
Epsilon : 54.21 F/m
Sigma : 1.53 S/m
Density : 1000.00 kg/cu. m

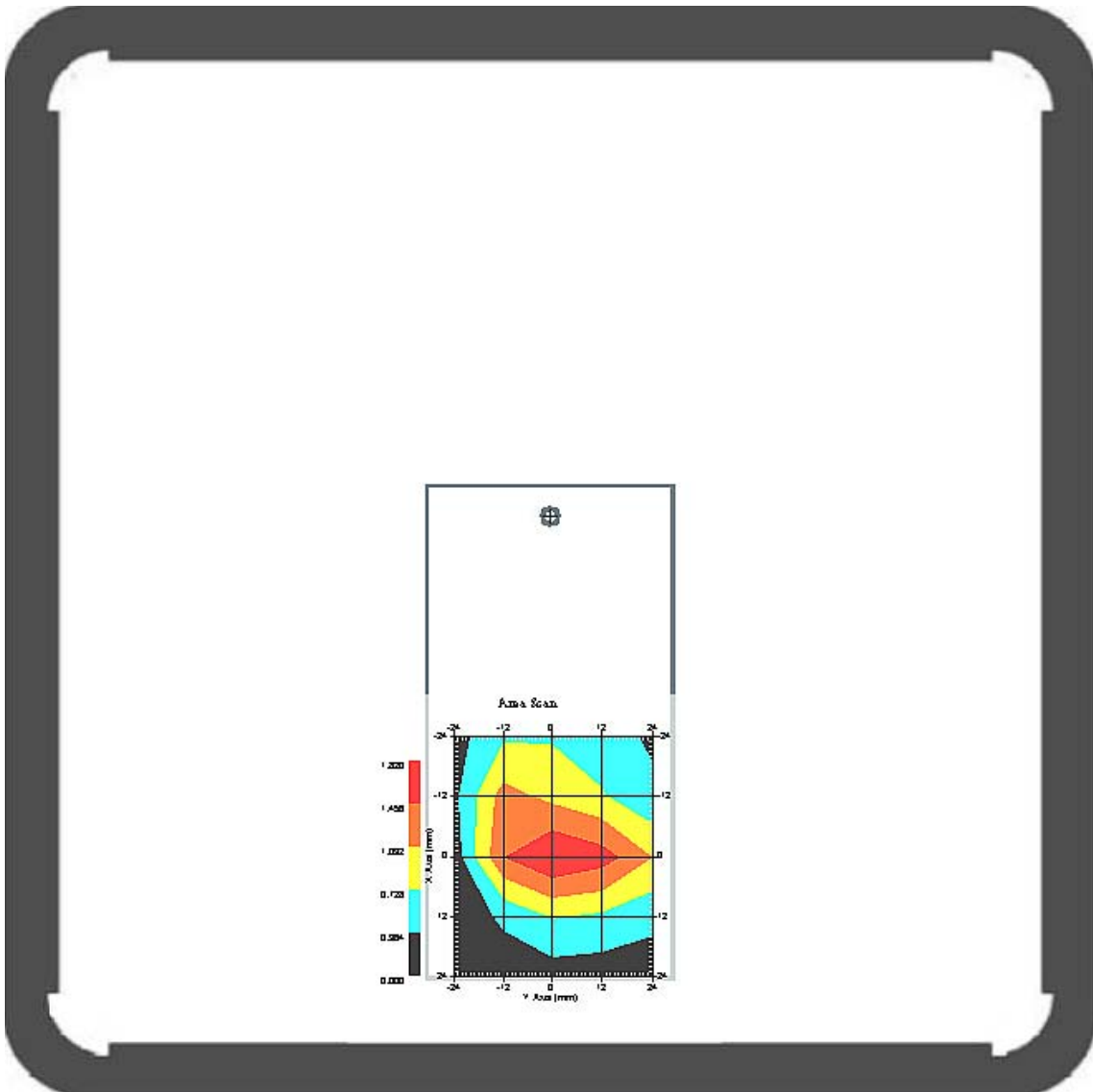
Probe Data

Name : Probe 264
Model : E020
Type : E-Field Triangle
Serial No. : 264
Last Calib. Date : 21-Aug-2007
Frequency : 1900.00 MHz
Duty Cycle Factor: 4
Conversion Factor: 5.75
Probe Sensitivity: 1.20 1.20 1.20 $\mu\text{V}/(\text{V}/\text{m})^2$
Compression Point: 95.00 mV
Offset : 1.56 mm

Measurement Data

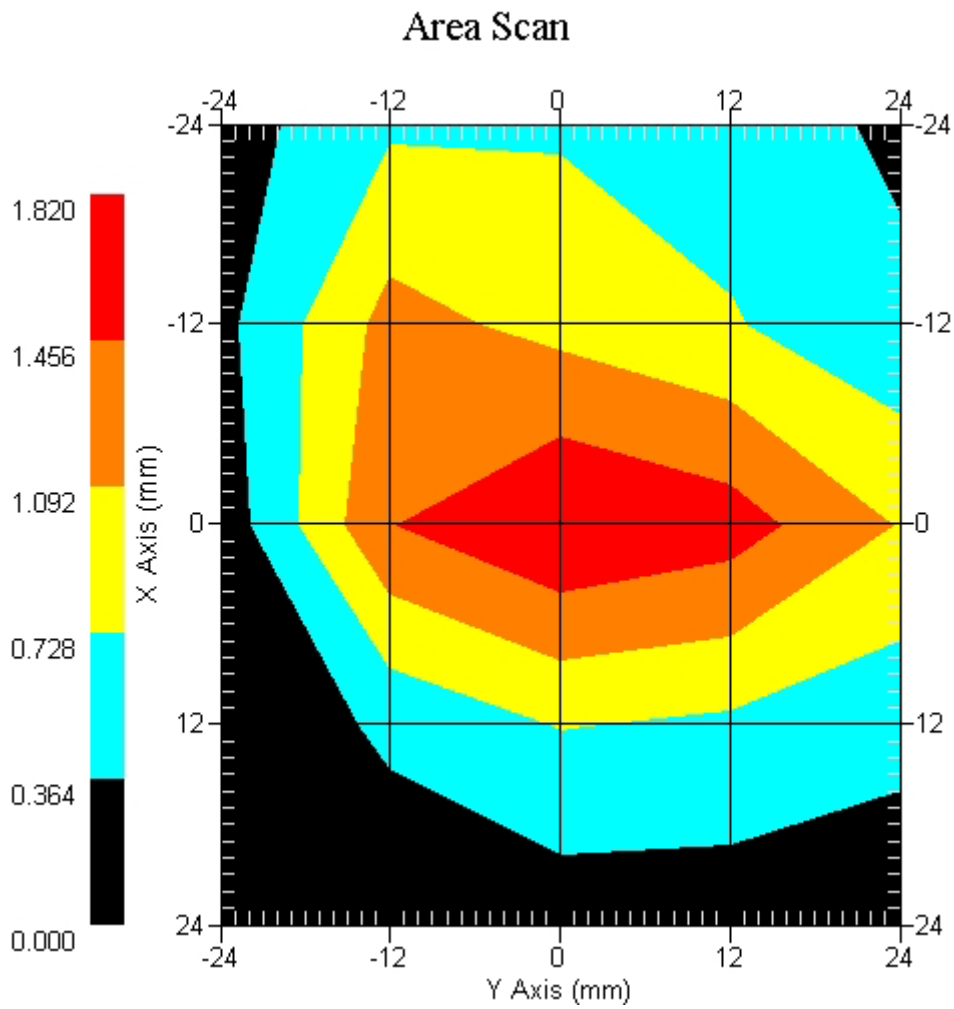
Crest Factor : 4
Tissue Temp. : 20.10 °C
Ambient Temp. : 21.30 °C
Area Scan : 5x5x1 : Measurement x=12mm, y=12mm, z=4mm
Zoom Scan : 7x7x7 : Measurement x=5mm, y=5mm, z=5mm
Power Drift-Start : 0.249 W/kg
Power Drift-Finish: 0.238 W/kg
Power Drift (%) : -4.418

DUT Position : Touch
Channel : 512



1 gram SAR value : 1.521 W/kg
10 gram SAR value : 0.758 W/kg
Area Scan Peak SAR : 1.820 W/kg
Zoom Scan Peak SAR : 3.192 W/kg

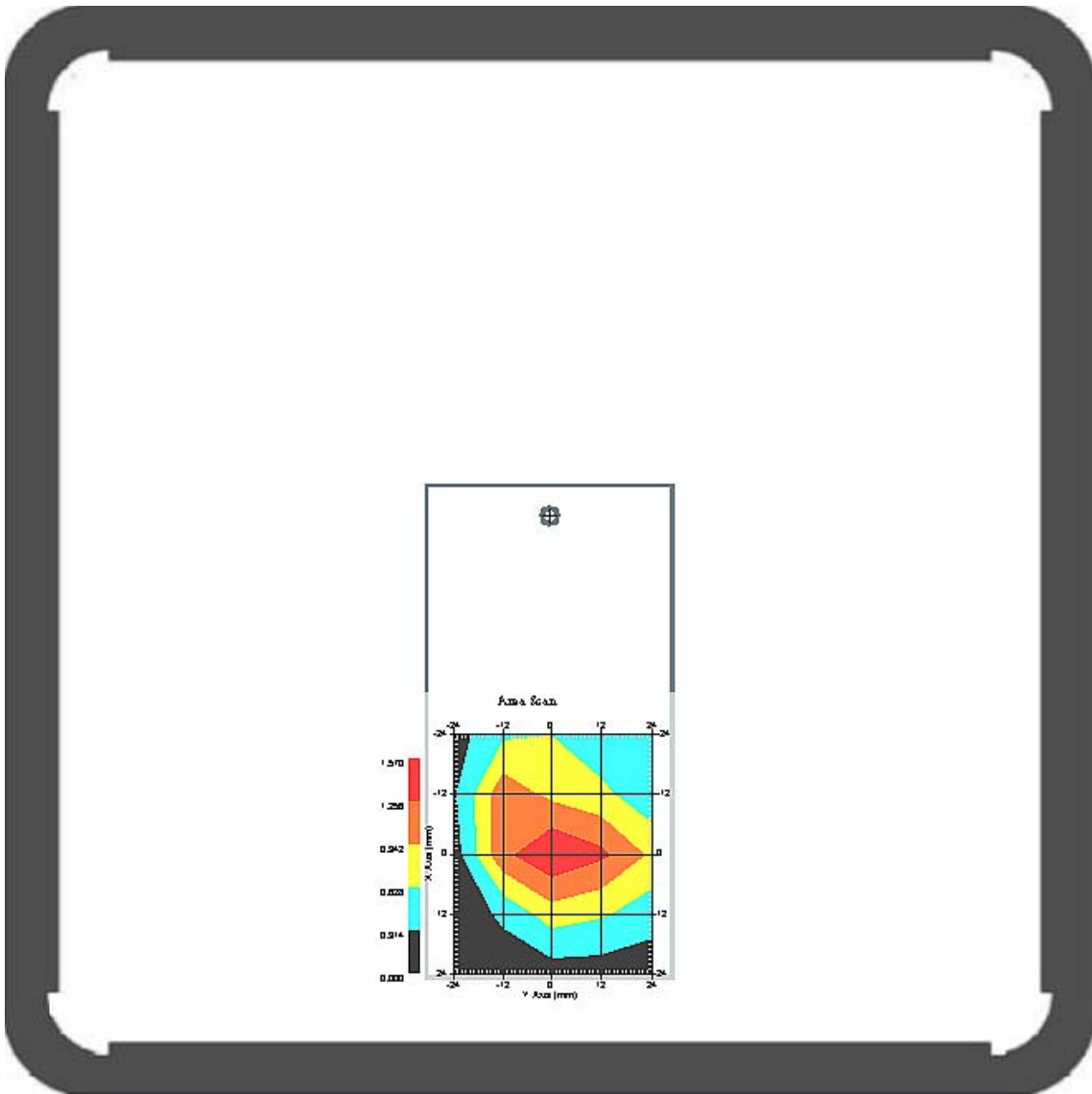
This is previous page plot (zoom in)



Measurement Data

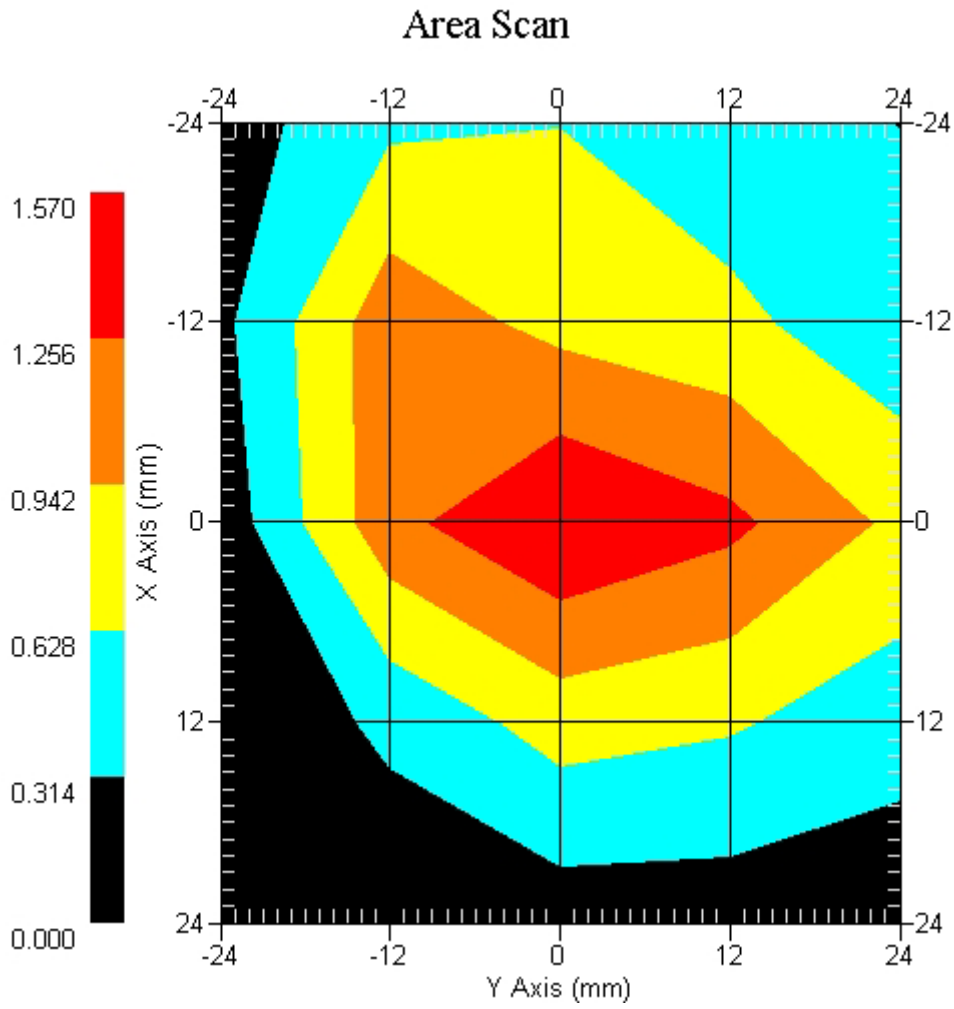
Crest Factor : 4
Tissue Temp. : 20.10 °C
Ambient Temp. : 21.30 °C
Area Scan : 5x5x1 : Measurement x=12mm, y=12mm, z=4mm
Zoom Scan : 7x7x7 : Measurement x=5mm, y=5mm, z=5mm
Power Drift-Start : 0.319 W/kg
Power Drift-Finish: 0.324 W/kg
Power Drift (%) : -1.567

DUT Position : Touch
Channel : 661



1 gram SAR value : 1.254 W/kg
10 gram SAR value : 0.621 W/kg
Area Scan Peak SAR : 1.570 W/kg
Zoom Scan Peak SAR : 2.325 W/kg

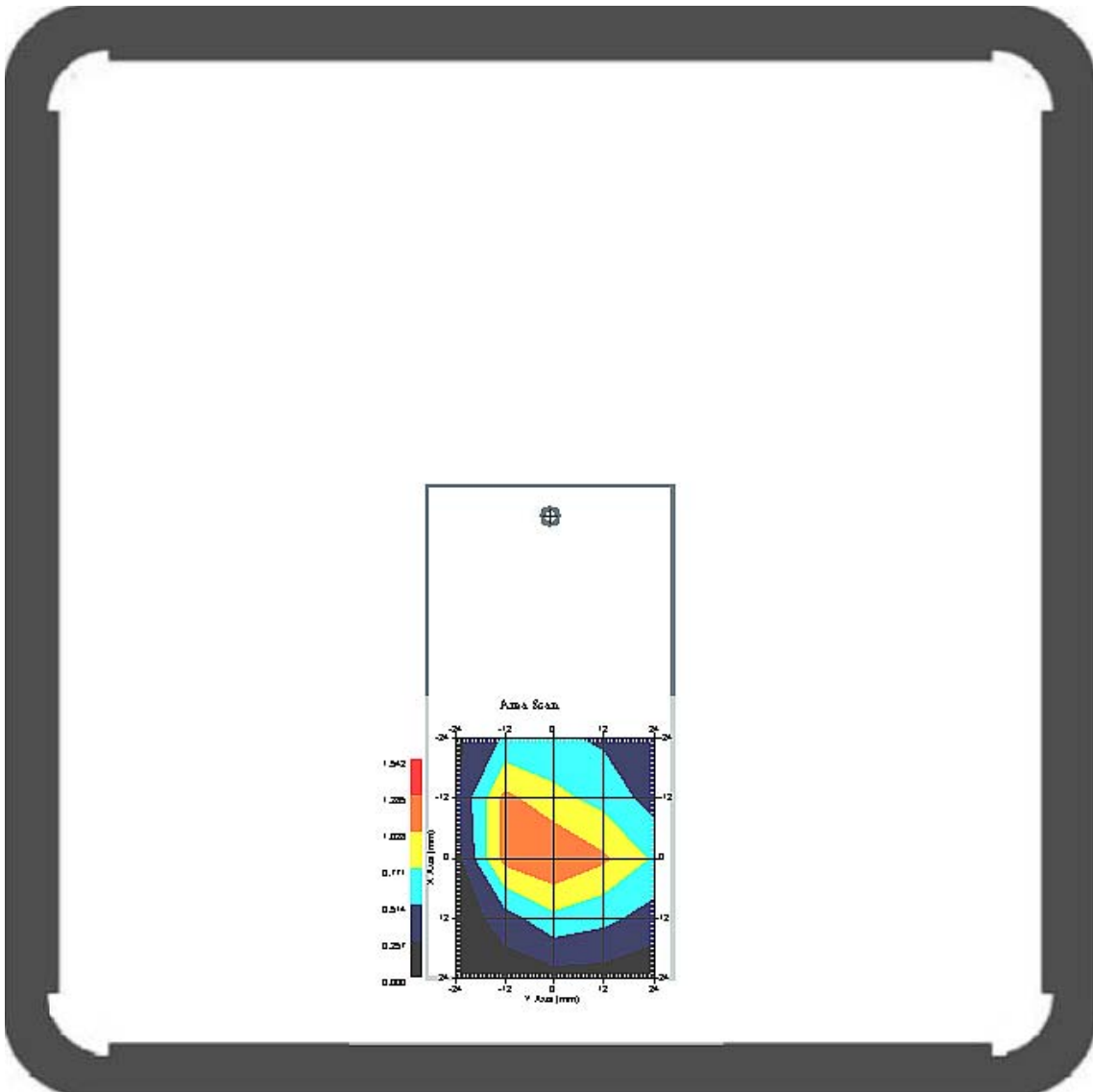
This is previous page plot (zoom in)



Measurement Data

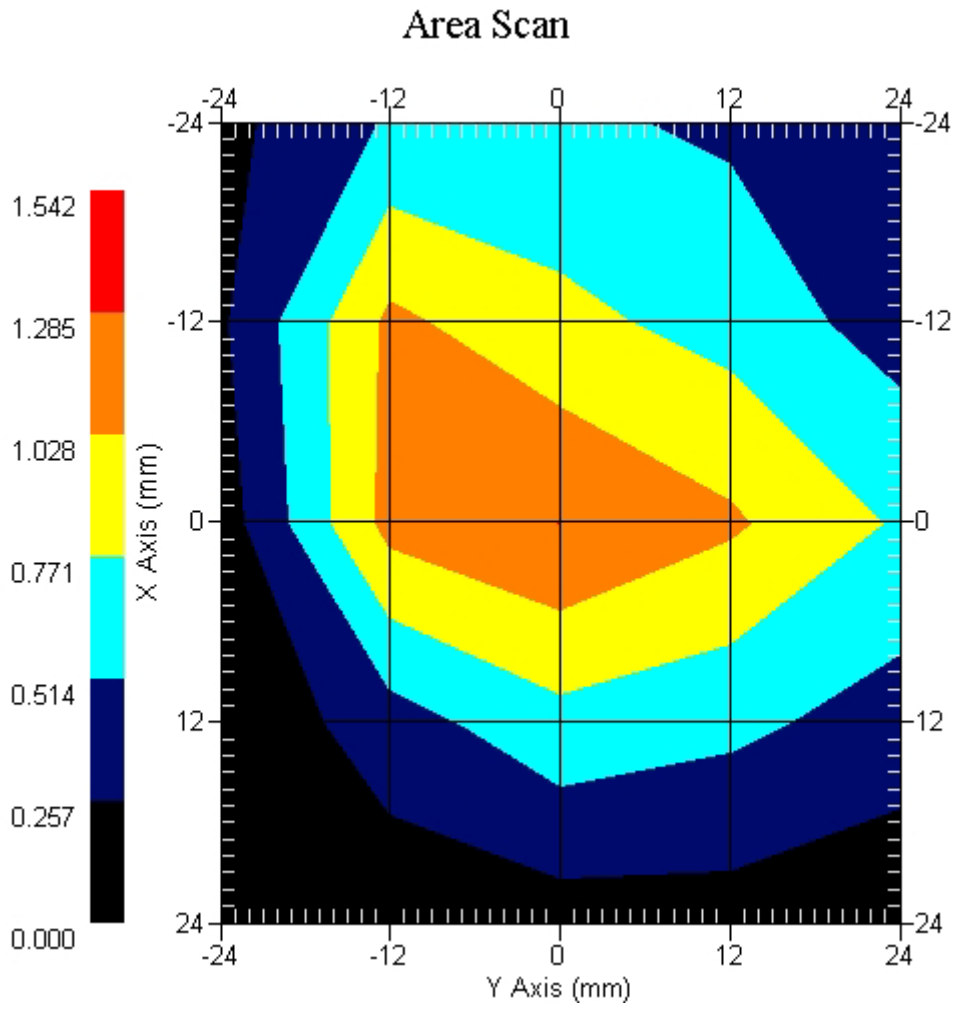
Crest Factor : 4
 Tissue Temp. : 20.10 °C
 Ambient Temp. : 21.30 °C
 Area Scan : 5x5x1 : Measurement x=12mm, y=12mm, z=4mm
 Zoom Scan : 7x7x7 : Measurement x=5mm, y=5mm, z=5mm
 Power Drift-Start : 0.197 W/kg
 Power Drift-Finish: 0.201 W/kg
 Power Drift (%) : 2.030

DUT Position : Touch
 Channel : 810



1 gram SAR value : 1.065 W/kg
 10 gram SAR value : 0.509 W/kg
 Area Scan Peak SAR : 1.286 W/kg
 Zoom Scan Peak SAR : 2.412 W/kg

This is previous page plot (zoom in)



ALSAS-10U VER 2.3.6 APREL Laboratories
SAR Test Report-PCS 1900 EGPRSReport Date : 10-Mar-2008
Measurement Date : 10-Mar-2008

Product Data

Device Name : GIGA
Type : Std Form Cell Phone
Model : MS800
Frequency : 1900.00 MHz
Max. Transmit Pwr : 1 W
Drift Time : 0 min(s)
Length : 116.1 mm
Width : 59.5 mm
Depth : 15.5 mm
Antenna Type : Internal

Phantom Data

Type : Uni-Phantom
Size (mm) : 280 x 280 x 200
Location : Center

Tissue Data

Type : BODY
Serial No. : 324-B
Frequency : 1900.00 MHz
Last Calib. Date : 10-Mar-2007
Temperature : 20.10 °C
Ambient Temp. : 21.30 °C
Humidity : 48.00 RH%
Epsilon : 54.21 F/m
Sigma : 1.53 S/m
Density : 1000.00 kg/cu. m

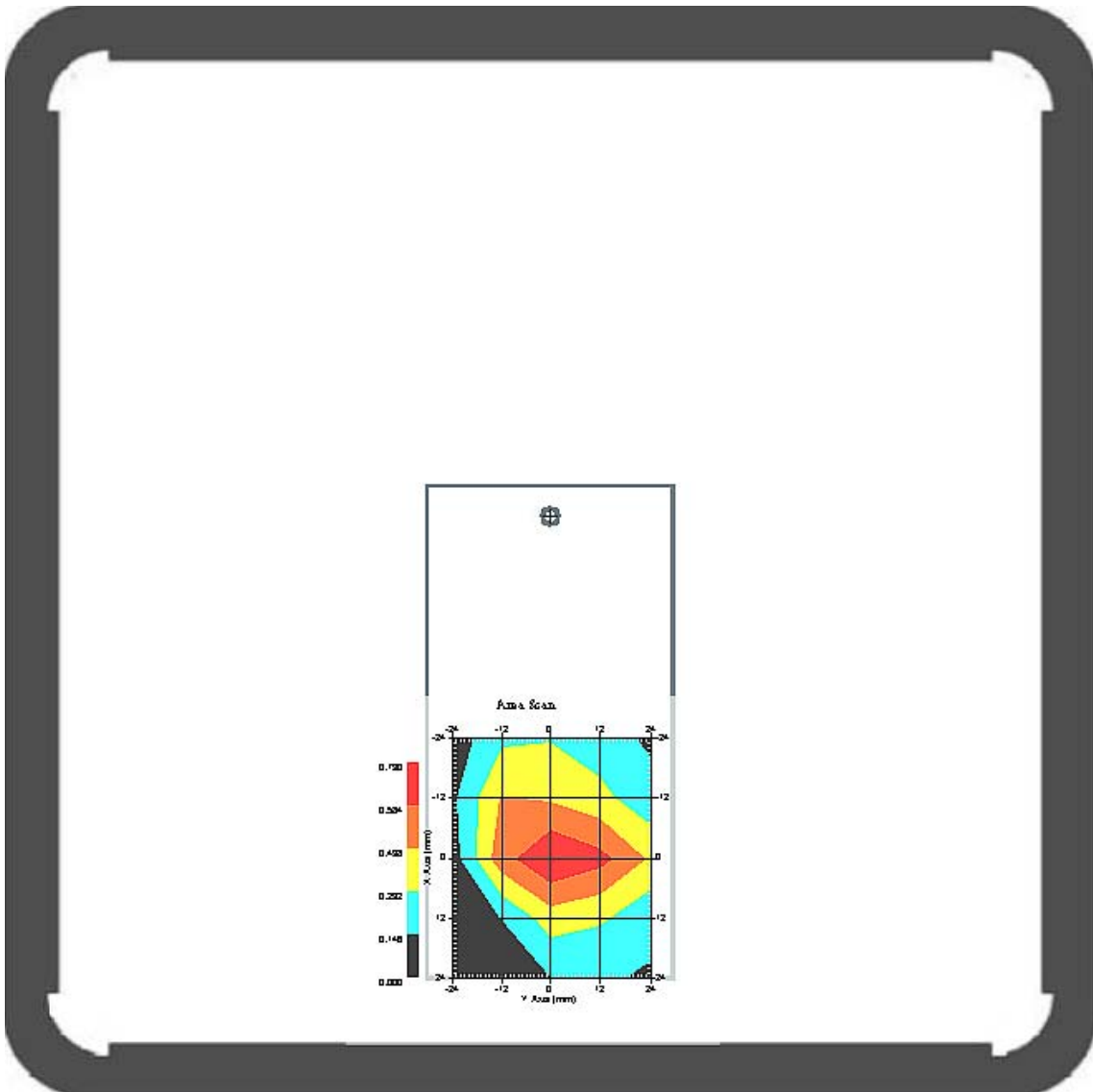
Probe Data

Name : Probe 264
Model : E020
Type : E-Field Triangle
Serial No. : 264
Last Calib. Date : 21-Aug-2007
Frequency : 1900.00 MHz
Duty Cycle Factor: 4
Conversion Factor: 5.75
Probe Sensitivity: 1.20 1.20 1.20 $\mu\text{V}/(\text{V}/\text{m})^2$
Compression Point: 95.00 mV
Offset : 1.56 mm

Measurement Data

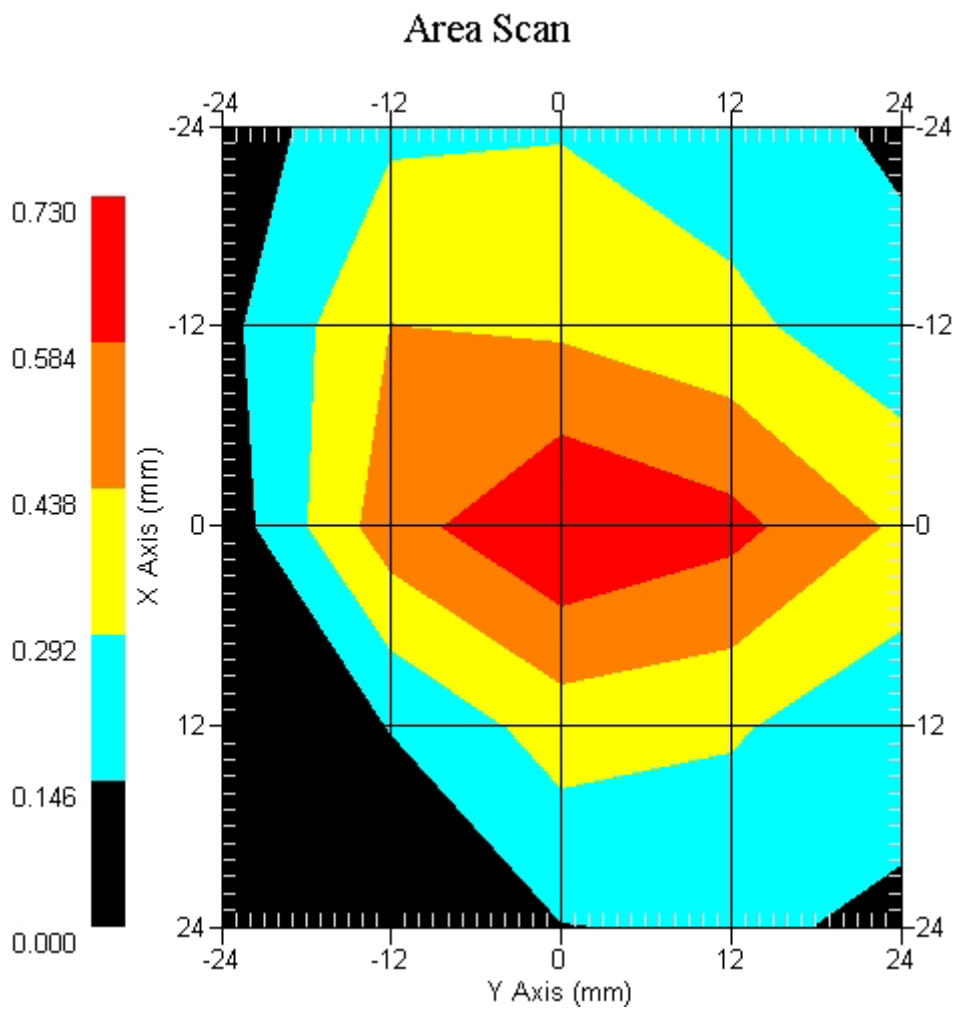
Crest Factor : 4
Tissue Temp. : 20.10 °C
Ambient Temp. : 21.30 °C
Area Scan : 5x5x1 : Measurement x=12mm, y=12mm, z=4mm
Zoom Scan : 7x7x7 : Measurement x=5mm, y=5mm, z=5mm
Power Drift-Start : 0.100 W/kg
Power Drift-Finish: 0.097 W/kg
Power Drift (%) : -3.000

DUT Position : Touch
Channel : 512



1 gram SAR value : 0.652 W/kg
10 gram SAR value : 0.395 W/kg
Area Scan Peak SAR : 0.730 W/kg
Zoom Scan Peak SAR : 1.124 W/kg

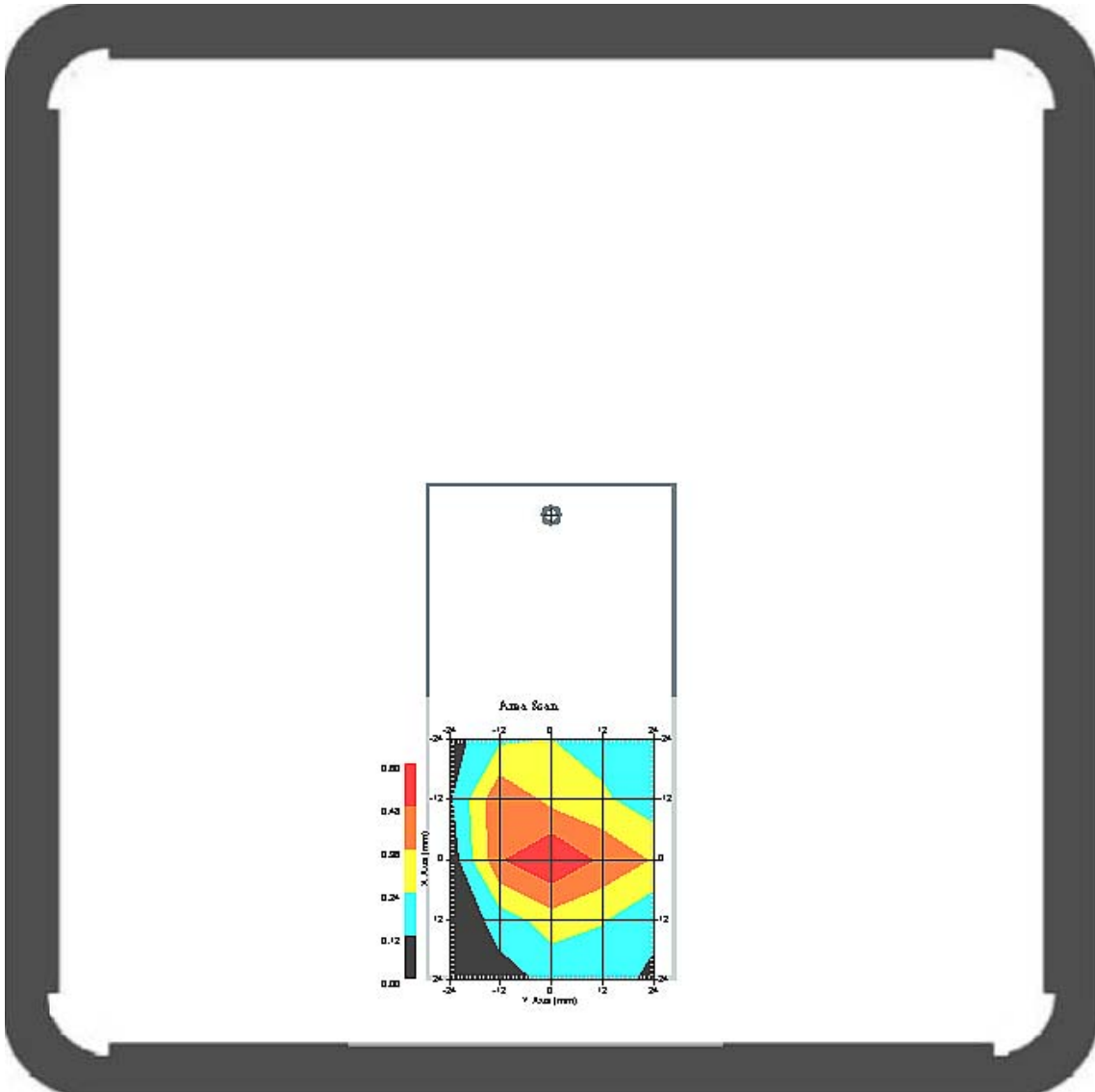
This is previous page plot (zoom in)



Measurement Data

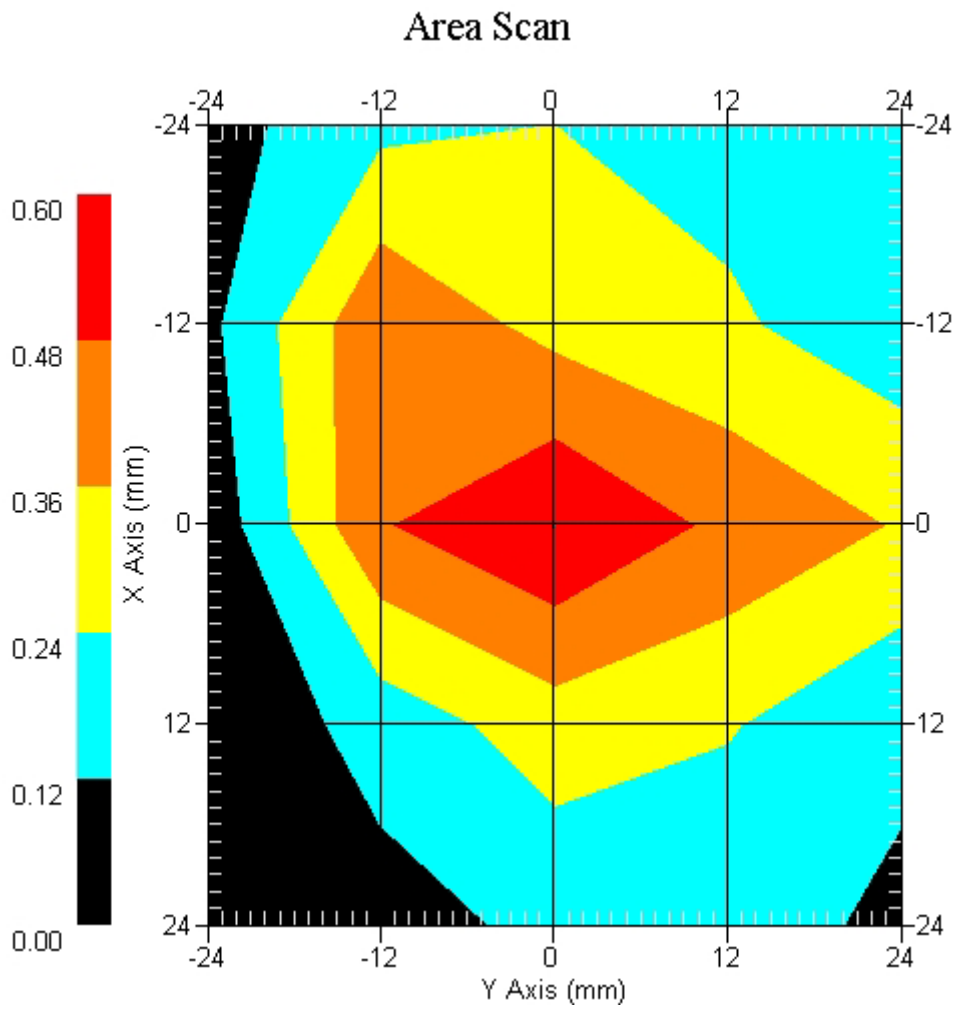
Crest Factor : 4
 Tissue Temp. : 20.10 °C
 Ambient Temp. : 21.30 °C
 Area Scan : 5x5x1 : Measurement x=12mm, y=12mm, z=4mm
 Zoom Scan : 7x7x7 : Measurement x=5mm, y=5mm, z=5mm
 Power Drift-Start : 0.109 W/kg
 Power Drift-Finish: 0.113 W/kg
 Power Drift (%) : 3.669

DUT Position : Touch
 Channel : 661



1 gram SAR value : 0.511 W/kg
 10 gram SAR value : 0.285 W/kg
 Area Scan Peak SAR : 0.600 W/kg
 Zoom Scan Peak SAR : 1.030 W/kg

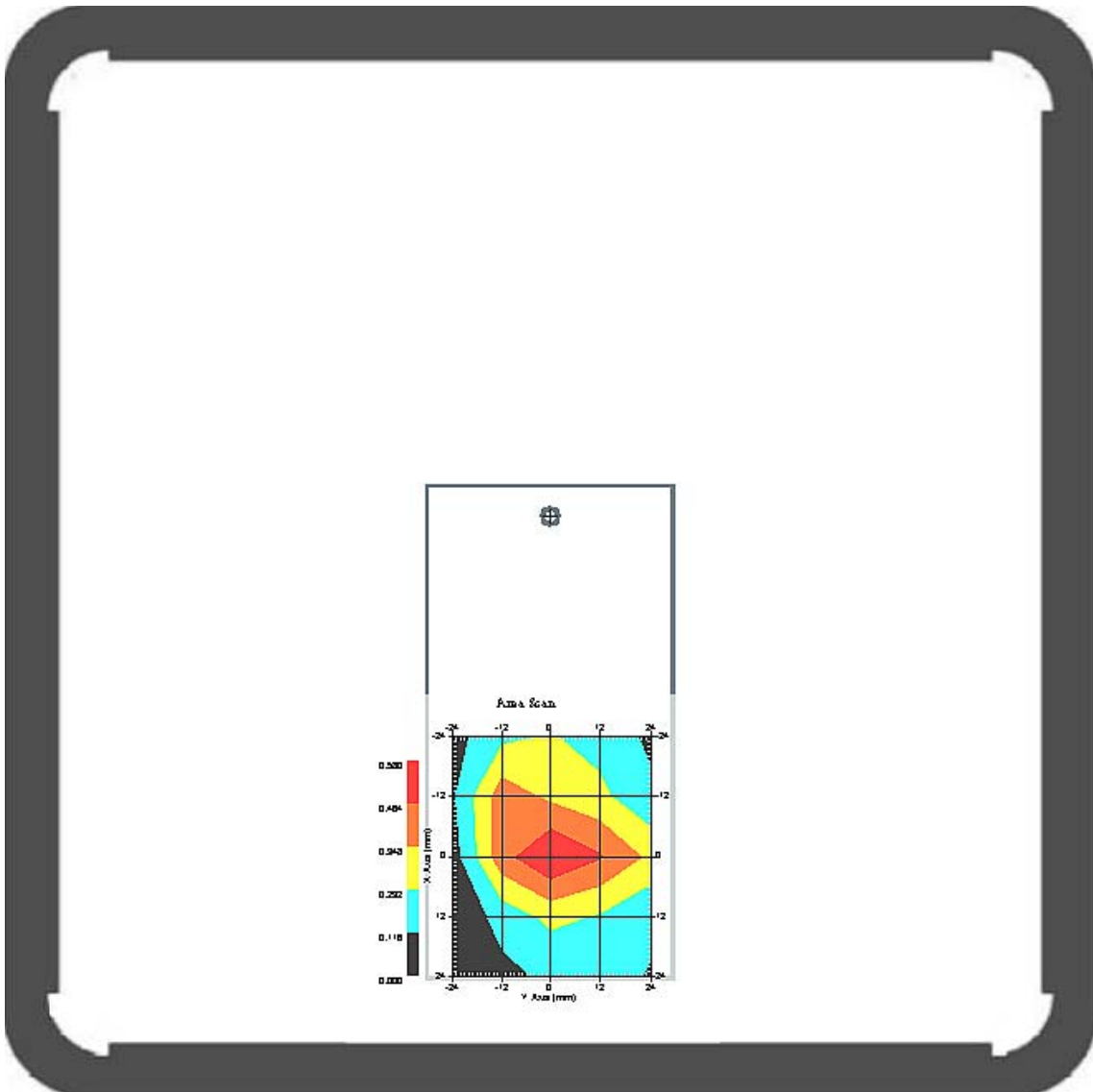
This is previous page plot (zoom in)



Measurement Data

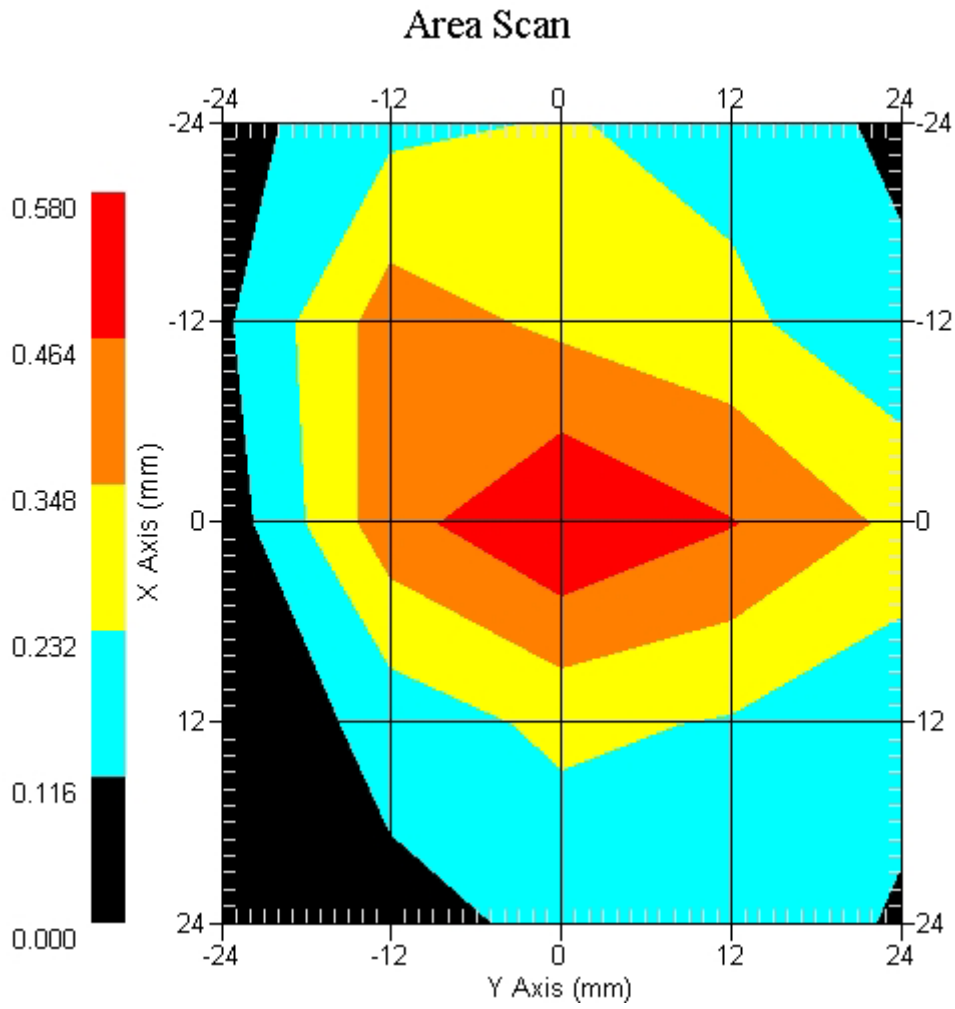
Crest Factor : 4
 Tissue Temp. : 20.10 °C
 Ambient Temp. : 21.30 °C
 Area Scan : 5x5x1 : Measurement x=12mm, y=12mm, z=4mm
 Zoom Scan : 7x7x7 : Measurement x=5mm, y=5mm, z=5mm
 Power Drift-Start : 0.101 W/kg
 Power Drift-Finish: 0.105 W/kg
 Power Drift (%) : 3.960

DUT Position : Touch
 Channel : 810



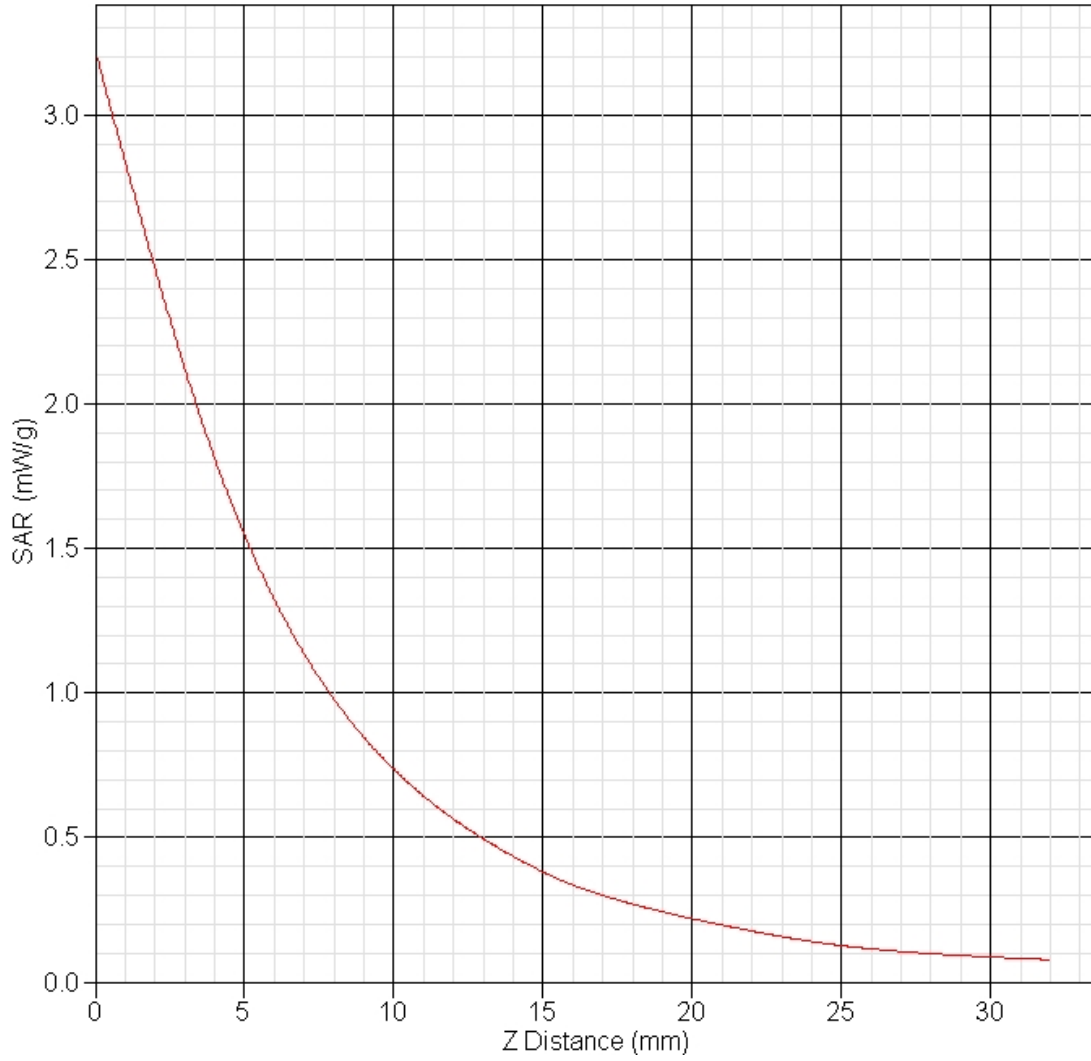
1 gram SAR value : 0.506 W/kg
 10 gram SAR value : 0.279 W/kg
 Area Scan Peak SAR : 0.580 W/kg
 Zoom Scan Peak SAR : 1.018 W/kg

This is previous page plot (zoom in)



PCS 1900 GPRS EUT Body-worn Z-Axis plot
Channel: 512

SAR-Z Axis
at Hotspot x:-5.92 y:-12.01



SAR measurement Data

ALSAS-10U VER 2.3.6 APREL Laboratories

SAR Test Report-802.11b

Report Date : 30-Apr-2008
Measurement Date : 30-Apr-2008

Product Data

Device Name : GIGA
Type : Std Form Cell Phone
Model : Atom V
Frequency : 2450.00 MHz
Drift Time : 0 min(s)
Length : 116.1 mm
Width : 59.5 mm
Depth : 15.5 mm
Antenna Type : Internal

Phantom Data

Type : SAM-Left
Size (mm) : 280 x 280 x 280
Location : Left

Tissue Data

Type : HEAD
Serial No. : 325-H
Frequency : 2450.00 MHz
Last Calib. Date : 30-Apr-2008
Temperature : 21.10 °C
Ambient Temp. : 22.90 °C
Humidity : 48.00 RH%
Epsilon : 40.55 F/m
Sigma : 1.84 S/m
Density : 1000.00 kg/cu. m

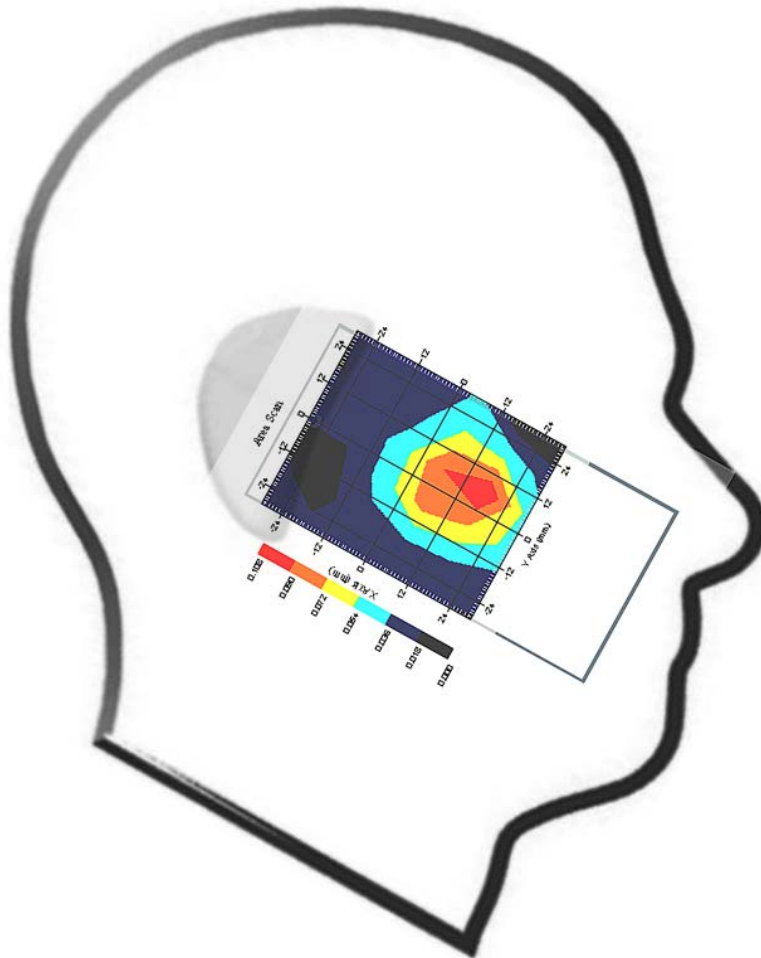
Probe Data

Name : Probe 264
Model : E020
Type : E-Field Triangle
Serial No. : 264
Last Calib. Date : 22-Aug-2007
Frequency : 2450.00 MHz
Duty Cycle Factor: 1
Conversion Factor: 5
Probe Sensitivity: 1.20 1.20 1.20 $\mu\text{V}/(\text{V}/\text{m})^2$
Compression Point: 95.00 mV
Offset : 1.56 mm

Measurement Data

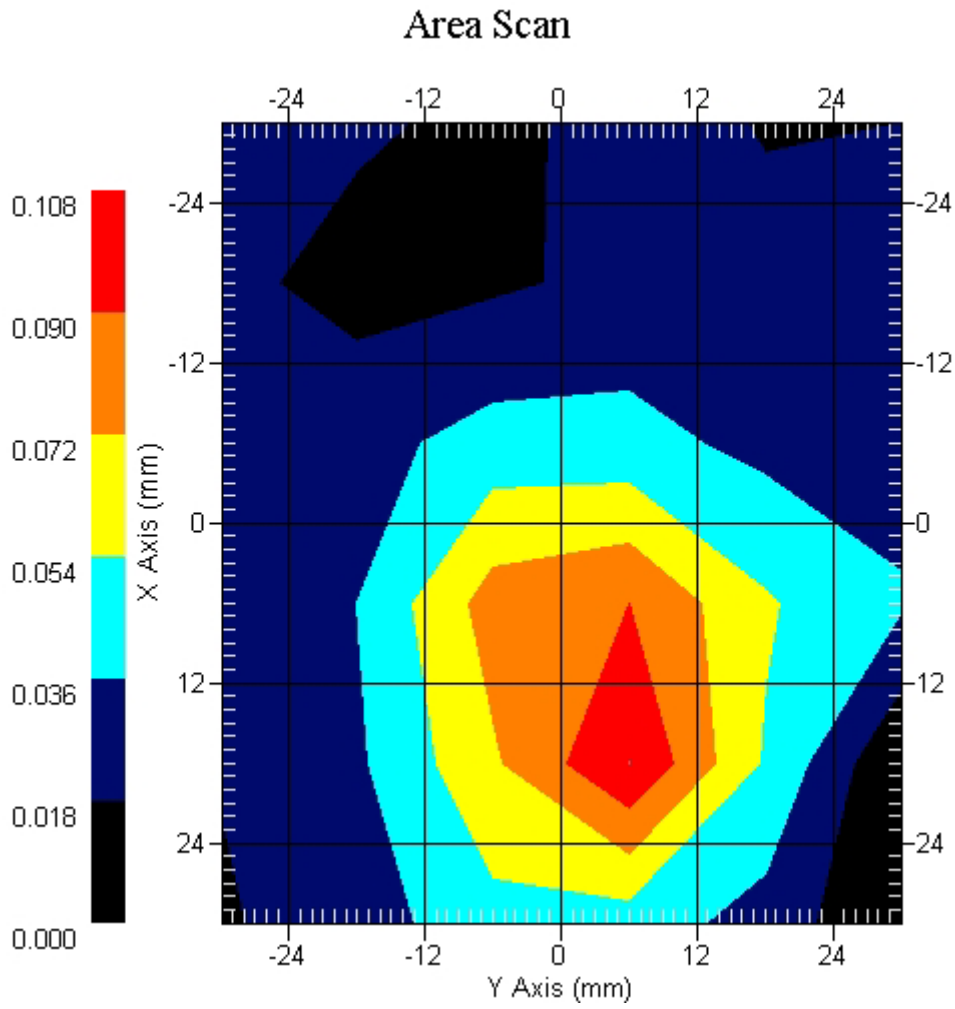
Crest Factor : 1
Tissue Temp. : 21.10 °C
Ambient Temp. : 22.90 °C
Area Scan : 6x6x1 : Measurement x=12mm, y=12mm, z=4mm
Zoom Scan : 7x7x7 : Measurement x=5mm, y=5mm, z=5mm
Power Drift-Start : 0.023 W/kg
Power Drift-Finish: 0.023 W/kg
Power Drift (%) : -0.765

DUT Position : Touch
Channel : 1

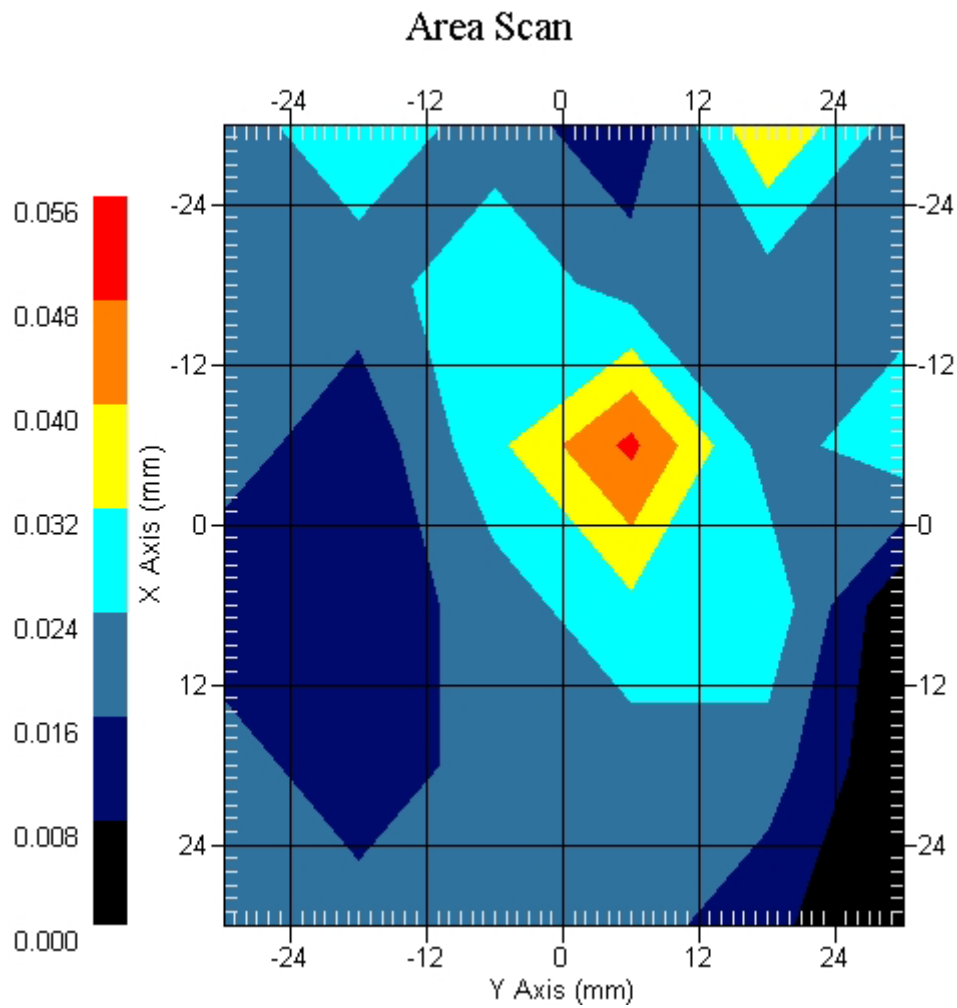


1 gram SAR value : 0.091 W/kg
10 gram SAR value : 0.060 W/kg
Area Scan Peak SAR : 0.108 W/kg
Zoom Scan Peak SAR : 0.190 W/kg

This is previous page plot (zoom in)



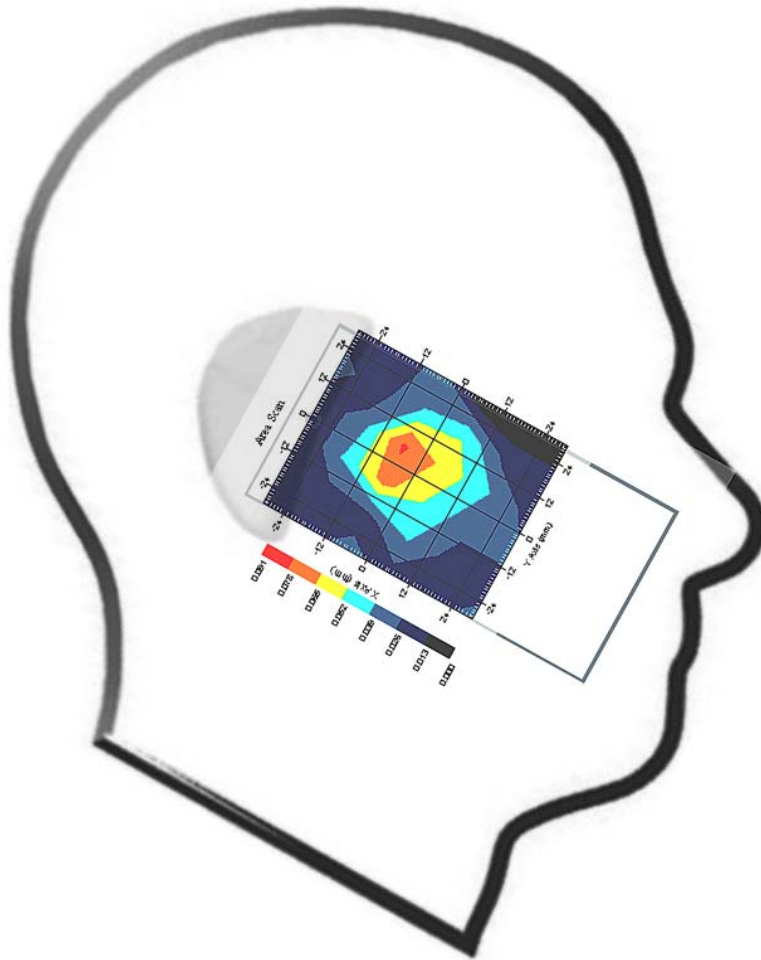
This is previous page plot (zoom in)



Measurement Data

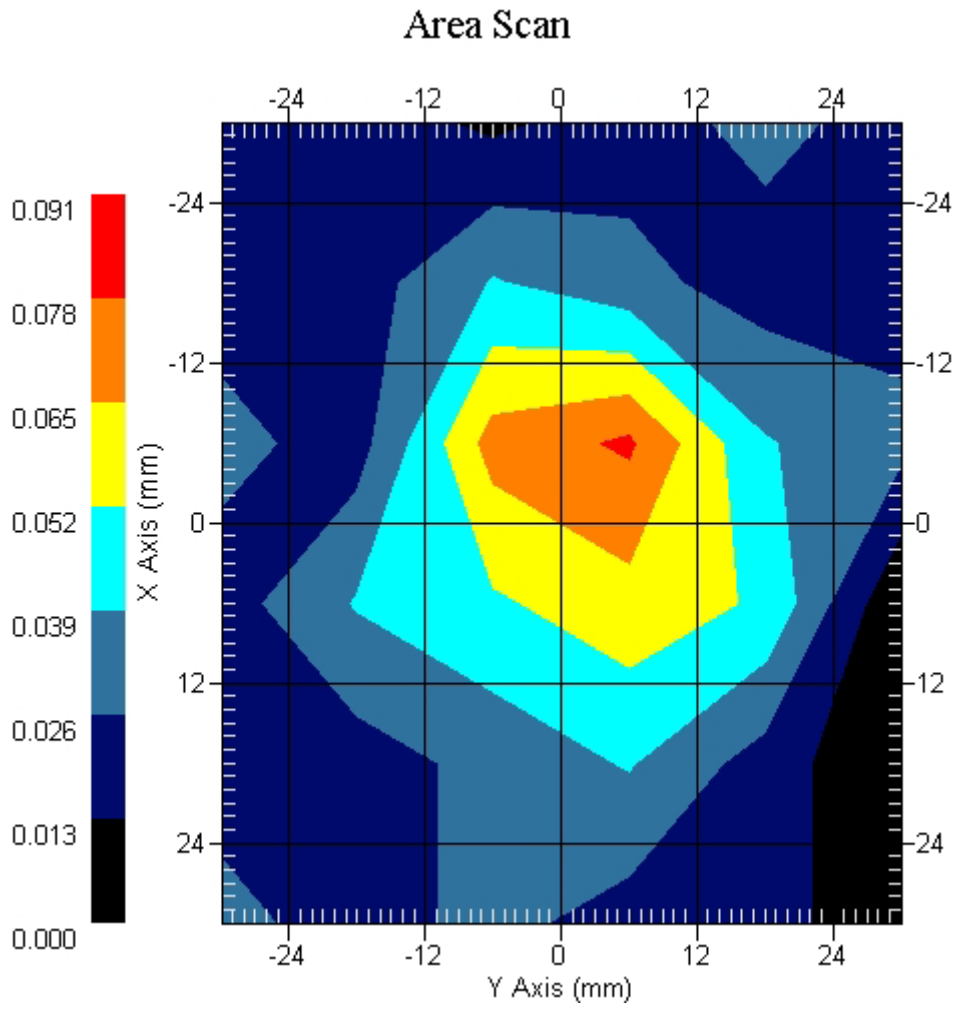
Crest Factor : 1
Tissue Temp. : 21.10 °C
Ambient Temp. : 22.90 °C
Area Scan : 6x6x1 : Measurement x=12mm, y=12mm, z=4mm
Zoom Scan : 7x7x7 : Measurement x=5mm, y=5mm, z=5mm
Power Drift-Start : 0.019 W/kg
Power Drift-Finish: 0.019 W/kg
Power Drift (%) : -0.525

DUT Position : Touch
Channel : 11



1 gram SAR value : 0.072 W/kg
10 gram SAR value : 0.041 W/kg
Area Scan Peak SAR : 0.080 W/kg
Zoom Scan Peak SAR : 0.132 W/kg

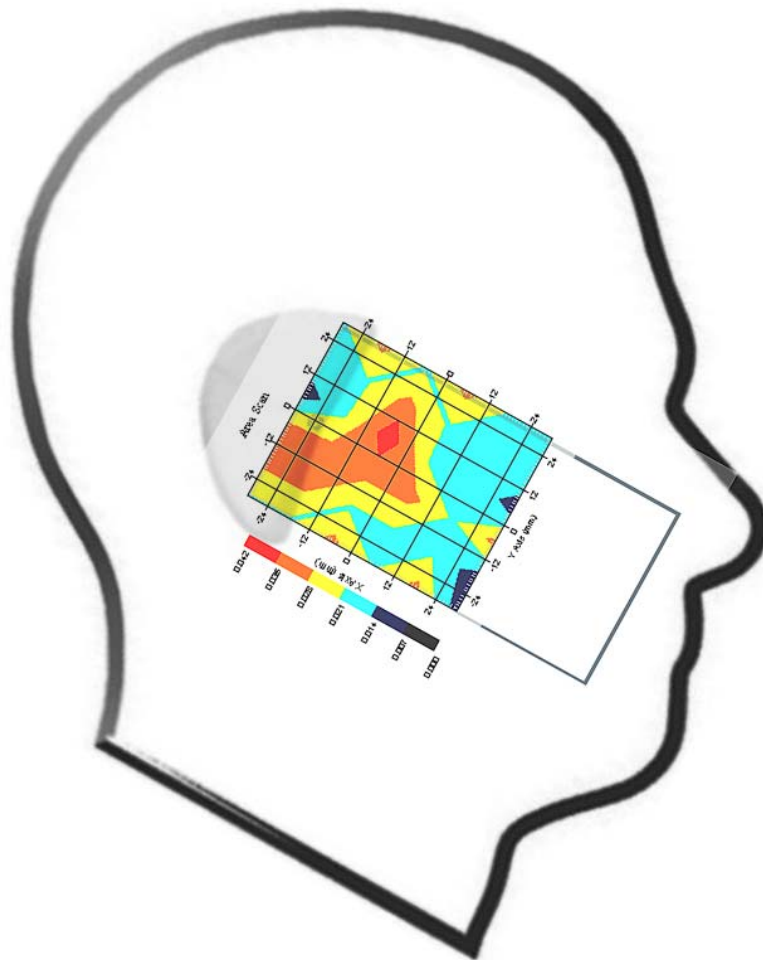
This is previous page plot (zoom in)



Measurement Data

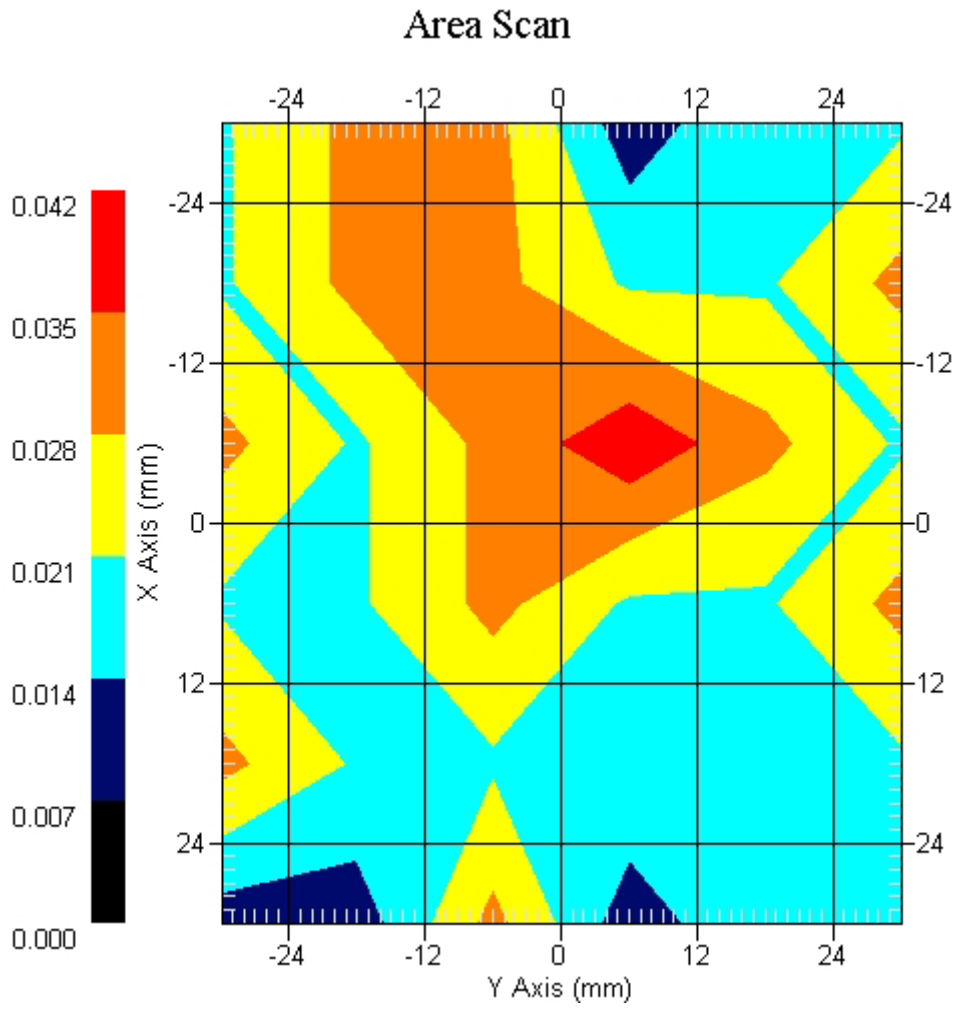
Crest Factor : 1
 Tissue Temp. : 21.10 °C
 Ambient Temp. : 22.90 °C
 Area Scan : 6x6x1 : Measurement x=12mm, y=12mm, z=4mm
 Zoom Scan : 7x7x7 : Measurement x=5mm, y=5mm, z=5mm
 Power Drift-Start : 0.035 W/kg
 Power Drift-Finish: 0.034 W/kg
 Power Drift (%) : -2.857

DUT Position : 15° Tilt
 Channel : 1



1 gram SAR value : 0.038 W/kg
 10 gram SAR value : 0.027 W/kg
 Area Scan Peak SAR : 0.040 W/kg
 Zoom Scan Peak SAR : 0.063 W/kg

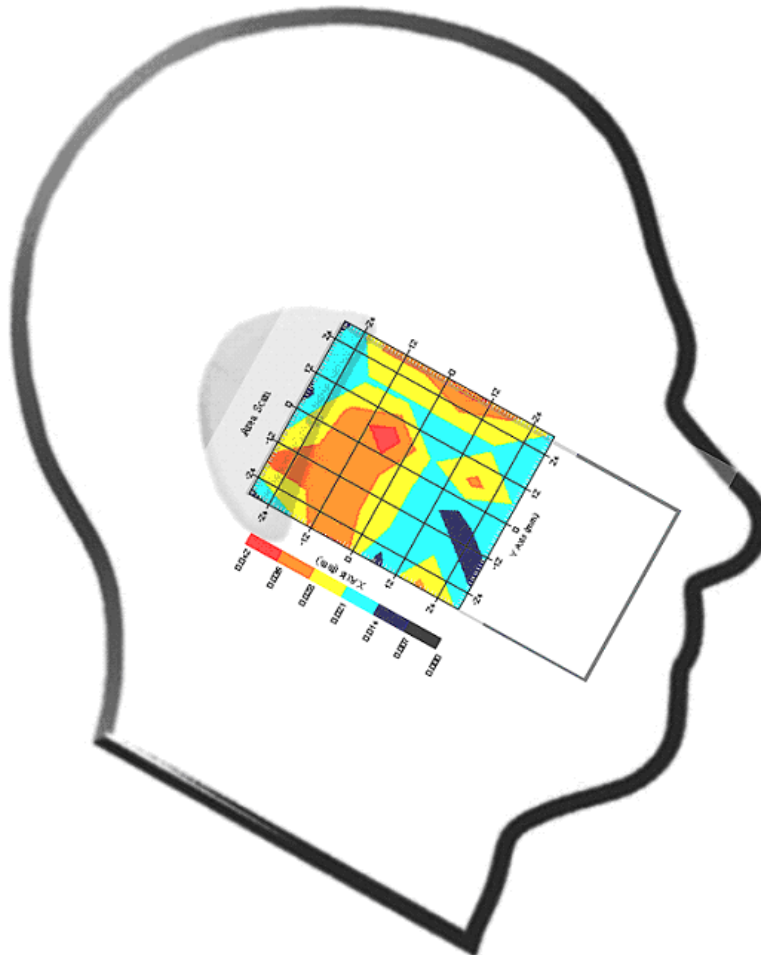
This is previous page plot (zoom in)



Measurement Data

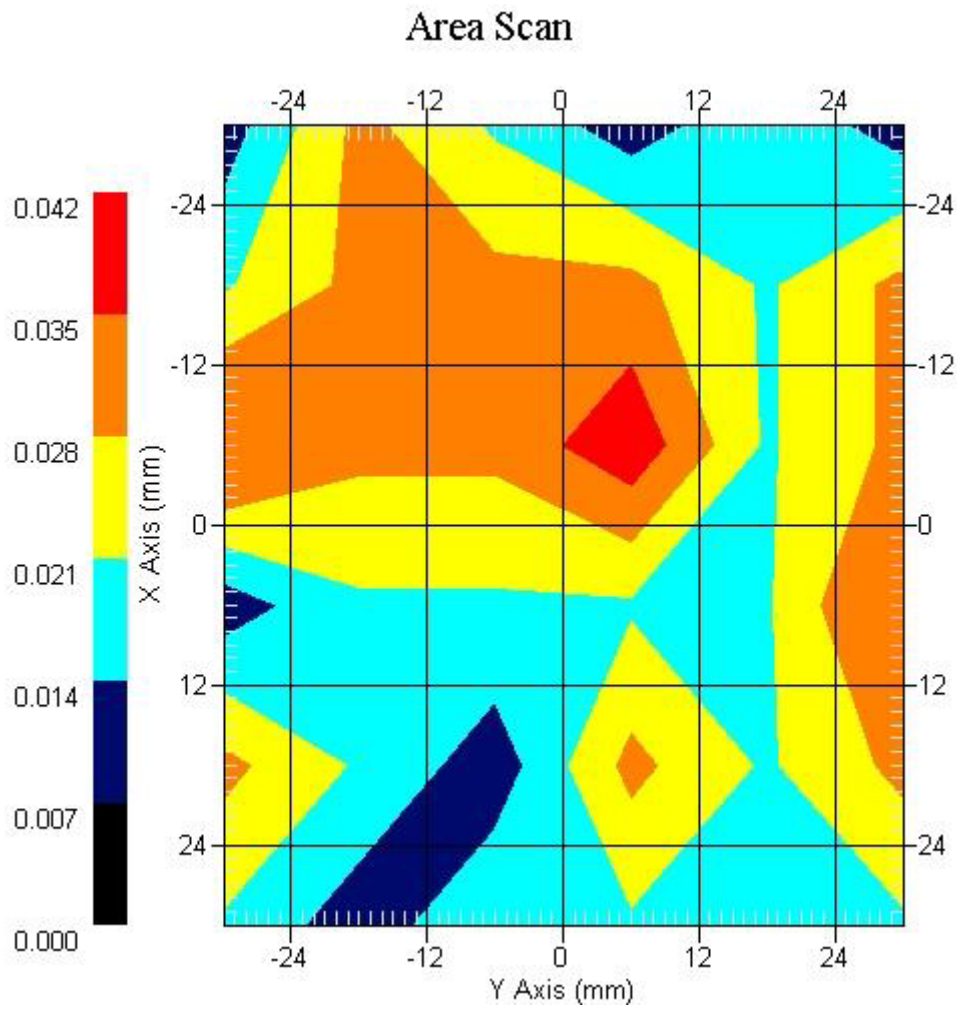
Crest Factor : 1
Tissue Temp. : 21.10 °C
Ambient Temp. : 22.90 °C
Area Scan : 6x6x1 : Measurement x=12mm, y=12mm, z=4mm
Zoom Scan : 7x7x7 : Measurement x=5mm, y=5mm, z=5mm
Power Drift-Start : 0.031 W/kg
Power Drift-Finish: 0.032 W/kg
Power Drift (%) : 3.225

DUT Position : 15° Tilt
Channel : 6



1 gram SAR value : 0.037 W/kg
10 gram SAR value : 0.028 W/kg
Area Scan Peak SAR : 0.040 W/kg
Zoom Scan Peak SAR : 0.062 W/kg

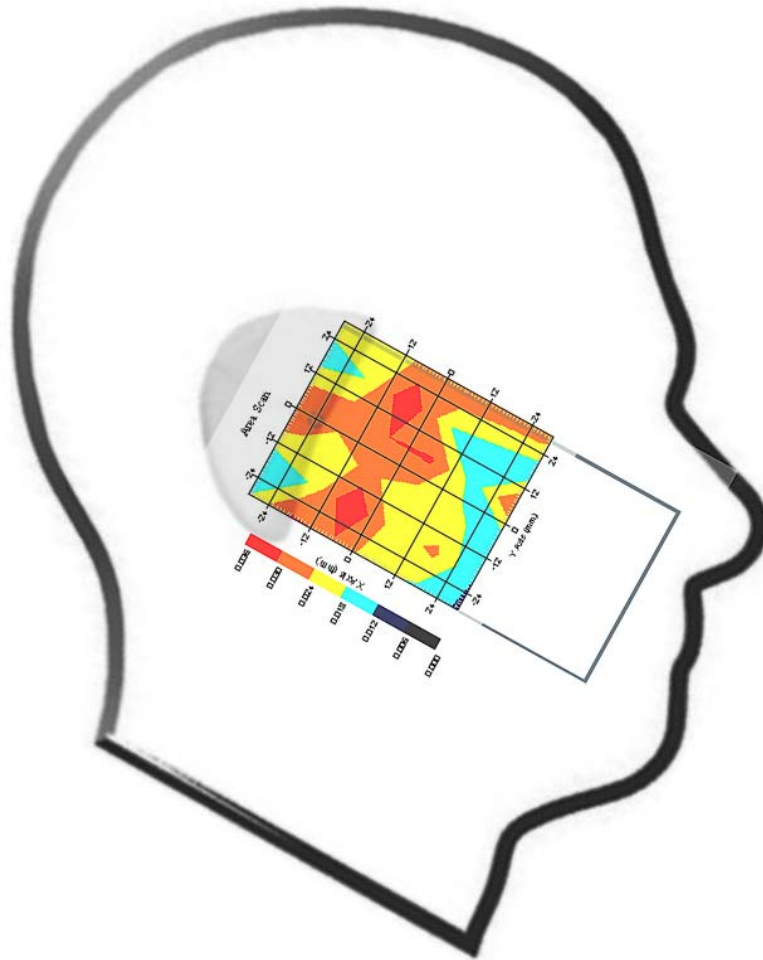
This is previous page plot (zoom in)



Measurement Data

Crest Factor : 1
Tissue Temp. : 21.10 °C
Ambient Temp. : 22.90 °C
Area Scan : 6x6x1 : Measurement x=12mm, y=12mm, z=4mm
Zoom Scan : 7x7x7 : Measurement x=5mm, y=5mm, z=5mm
Power Drift-Start : 0.037 W/kg
Power Drift-Finish: 0.035 W/kg
Power Drift (%) : -3.922

DUT Position : 15° Tilt
Channel : 11



1 gram SAR value : 0.035 W/kg
10 gram SAR value : 0.025 W/kg
Area Scan Peak SAR : 0.036 W/kg
Zoom Scan Peak SAR : 0.050 W/kg

This is previous page plot (zoom in)

