

Use AUX

By connecting external input cables and AUX devices to this product, you can play back tracks on these devices through the product.

By connecting external input cables and AUX devices to this product, tracks are played back automatically.

CAUTION

- Connect an audio device with external sound input mode cancelled, or with the sound turned down.
- Even when no device is connected, the product will switch to AUX, therefore take care with volume levels when no device is connected.
- Video from AUX devices cannot be viewed.
- If this is used with the engine stopped, it may run down the battery and make it impossible to start the engine.

NOTE

- Depending on the audio device to be connected, noise may be emitted.
- For power, use the battery power source included in the audio device to be connected. Using the connected audio device while charging through the cigarette lighter socket in the vehicle may lead to noise being emitted through the speakers.
- If no audio devices are connected, then do not select the external sound input mode. If external sound input mode is selected while no audio devices are connected, then sound may be emitted through the speakers.
- Please refer to your vehicle's user manual regarding how to connect AUX devices.

Displaying

- 1 Press the **HOME** key.
The home screen is displayed.
- 2 Touch **AUX**.



This outputs the audio from the AUX device.

NOTE

- The [AUX] touch switch is displayed even if no AUX device is connected to this product.

ADVICE

- Touching [Sound] lets you adjust the sound quality. →“Adjust the Sound Quality” (P62)

Use HDMI

By connecting HDMI conversion cable (sold separately), commercially available HDMI cable (sold separately), and HDMI output device to this product, you can input videos or audio from these devices to the product and play it back.

Connect a HDMI output device to this product to automatically start playback.

NOTE

- Videos from HDMI output devices cannot be output to AUX.

CAUTION

- For the sake of safety, videos from HDMI output devices can only be played with the vehicle stopped and the parking brake engaged.
- While the vehicle is moving, the video provides audio but no image.
- To watch videos from HDMI output devices, ensure that the vehicle is stopped in a safe area in which stopping is permitted.
- If this is used with the engine stopped, it may run down the battery and make it impossible to start the engine.

Displaying

- 1 Press the **HOME** key.
The home screen is displayed.
- 2 Touch **HDMI**.



Videos from the HDMI device is displayed.

NOTE

- For details on how to operate the connected HDMI output device, please refer to the user manual for each device.

ADVICE

- Touching the screen while a video from the HDMI device is being displayed displays the HDMI menu that allows you to perform [Sound] (P62) and [Display] (P64).

Use Rear Display

When a rear display is equipped, you can listen to the music being played on the rear display through this product.

⚠ CAUTION

- Videos from the rear display cannot be viewed.
- Turn the volume down before changing to the rear display.
- If this is used with the engine stopped, it may run down the battery and make it impossible to start the engine.

Displaying

- 1 Press the **HOME** key.
The home screen is displayed.
- 2 Touch **RearDisp** .



The audio from the rear display is output.

ADVICE

- Touching [Sound] lets you adjust the sound quality. → "Adjust the Sound Quality" (P62)
- The DVD video being played on this product can be displayed on the rear display.

INFO/SETTINGS

INFO

Mobile Phone

Connecting your mobile phone to this product with Bluetooth lets you use the hands-free function.

⚠ WARNING

- For safety's sake, do not operate the mobile phone while driving. When operating the mobile phone, first stop the vehicle in a safe location.
- Do not leave your mobile phone unattended in the vehicle. If your mobile phone rolls underfoot when you stop the vehicle or when you go around a curve and it get under the brake pedal, it can interfere with driving and cause an accident.

NOTE

- Cancel functions such as the mobile phone "dial lock", and connect while on the standby screen.
- While connected, mobile phone (receiving calls, etc.) operations may not function correctly.
- Depending on the distance between the product and the mobile phone, the conditions within the vehicle, and types of screening, connection may not be possible. In these cases, situate the mobile phone as close as possible to the product.
- This product allows you to register a total of 5 Bluetooth devices, including Bluetooth-capable mobile phones and audio devices.
- Even though a Bluetooth-capable mobile phone, characteristics and specifications may mean that correct operation may not be possible.
- Even though a Bluetooth-capable mobile phone, phone specifications and settings may result in differences in display, or prevent correct operation.
- Some models may not be confirmed as connected, or may not connect.

Connect Your Mobile Phone

This product and your mobile phone use the Bluetooth function to connect. For details on how to connect, refer to "Bluetooth Setting" (P67). Operation methods below describe situations once connection has been completed.

NOTE

- This requires a mobile phone that can be connected to the Bluetooth.

Display the Phonebook

The phonebook in your mobile phone can be displayed.

1 Press the **PHONE** key.

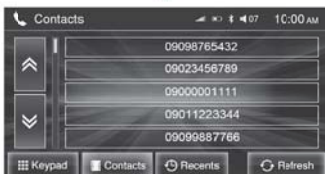
The mobile phone screen is displayed.

2 Touch **Keypad**.



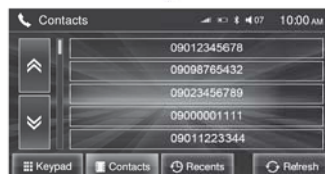
The keypad screen is displayed.

3 Touch **Contacts**.



The phonebook screen is displayed.

4 Touch **Refresh**.



The phonebook in your mobile phone can be displayed.

ADVICE

- Only when a Bluetooth connection is established, touching [HOME] key then [PHONE] key displays the previous screen.

Dial a Telephone

There are a number of way to make a call.

CAUTION

- As much as possible, refrain from phone calls while driving. First stop your vehicle in a safe location.
- Some mobile phones restrict calls to the same number to no more than 3 times in 3 minutes.

Calling by Entering a Telephone Number

1 On the mobile phone screen, enter the telephone number.



"OFF HOOK" key

ADVICE

- If you make a mistake for entering, touch [Delete] to clear one digit.
- Hold down [Delete] to delete all of the input characters.

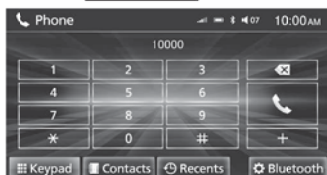
2 Touch the "OFF HOOK" key.

A call is started to the telephone number you entered.

Making a Call from a Phone Record

A call can be made using outgoing/incoming call records.

- 1 On the mobile phone screen, touch **Recents**.



- 2 Touch **Outgoing**, **Incoming**, or **Missed**.

- 3 Touch the "telephone number to call".



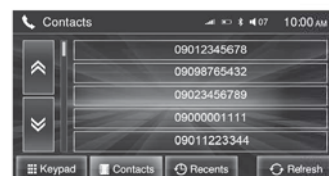
A call is started to the telephone number you selected.

Making a Call from a Phonebook

- 1 Display the phonebook.

→ "Display the Phonebook" (P58)

- 2 Select and touch the "person to call".



A call is started to the telephone number you selected.

Incoming Calls

The audio guide sounds and the incoming call screen is displayed.



ADVICE

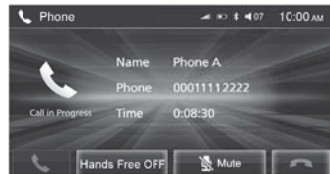
- Touching [Mute] switches off the function for the mic connected to this product. Touching [Mute] again switches ON the mic function.
- Touching [Hands Free OFF] switches the speaker and mic functions to the mobile phone side. Touching [Hands Free OFF] again switches the speaker and mic functions to this product.
- The call volume is switched to the volume from the last call. The volume during this call will be the volume for the next call.

INFO/SETTINGS

INFO

Answering an Incoming Call

1 Touch .



You can now talk with the calling party.

ADVICE

- When the steering remote controller has the "OFF HOOK" key, pressing the "OFF HOOK" key allows you to talk with the calling party.
→"Steering Remote Control Switch Operation"(P17)

Ending a Telephone Call

1 Touch .

This ends the incoming call.

ADVICE

- When the steering remote controller has the "ON HOOK" key, pressing the "ON HOOK" key allows you to end the call.
→"Steering Remote Control Switch Operation"(P17)

Other Info

Camera

When a camera is connected, the picture from the camera can be shown on the display. For details, refer to the user manual for the vehicle.

- 1 Move the gear shift position to "R".



The picture from the rear view camera or Multi Around Monitor is displayed.

SETTINGS

Adjust the Sound Quality

Change audio quality settings.

NOTE

- You cannot adjust the sound quality when the audio is OFF.

1 Press the **HOME** key.
The home screen is displayed.

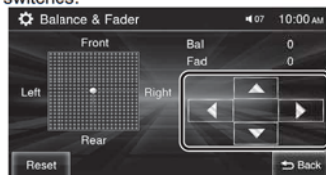
2 Touch **Setting**.

3 Touch **Sound**.



Displays the sound quality setting screen.

Setting Items

Settings name	Settings value	Settings content	
Equalizer	TRE	Allows you to set the treble to one of 11 levels, from -5 to +5.	
	MID	Allows you to set the midrange to one of 11 levels, from -5 to +5.	
	BASS	Allows you to set the bass to one of 11 levels, from -5 to +5.	
Balance&Fader	BALANCE: L11 - L1,0,R1 - R11 (Left,Right)	The level of the sound output from each speaker can be adjusted with the cursor switches. 	
	FADER: F11 - F1,0,R1 - R11 (Front,Rear)		
PremiDIA ^{*1*3}	HD ^{*2}	Off	Allows you to adjust the amount of compensation for reproducing the feeling of solidity and depth of the original sound by forecasting and supplementing for the high-frequency audio information lost during audio data compression.
		Low	
		High	
	WIDE	Off	Allows you to adjust the amount of compensation for achieving wide audio image that goes beyond the range of the stereo speaker.
On			

Settings name	Settings value	Settings content
Music Type	ROCK	Allows you to select the sound type.
	POP	
	HIPHOP	
	JAZZ	
	NORMAL	
SCV (Speed Compensated Volume)	Off	Allows you to select the volume for automatic adjustment according to the vehicle speed.
	Low	
	Med.	
	High	

*1) A setting only for vehicles with high-grade amplifier.

*2) This is also effective for non-compressed sound sources.

*3) This is disabled when the audio source is analogue radio.

ADVICE

- Touching [Reset] returns all the sound quality adjustments to their factory default settings.

System Settings

System related settings, such as the operation sound and the time, can be made.

Beep sound

The operation volume can be set.

- 1 Press the **HOME** key.
The home screen is displayed.
- 2 Touch **Setting**, and then **Beep sound**.
- 3 Touch the “volume” to change to.



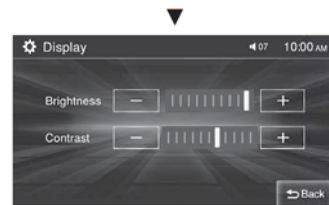
- 4 Touch **Back**.

The setting change is complete.

Display Setting

The image quality of the menu screen and HDMI can be changed.

- 1 Press the **HOME** key.
The home screen is displayed.
- 2 Touch **Setting**, and then **Display**.
- 3 Touch **General Screen**.



You can make the settings concerning the screen.

Brightness	Adjusts the brightness. Touching [+] makes the display brighter, touching [-] makes it dimmer. Allows you to adjust continuously by continuing the touch.
Contrast	Adjusts the contrast. Touching [+] increases the contrast, touching [-] decreases it. Allows you to adjust continuously by continuing the touch.

- 4 Change the settings, then touch **Back**.

The screen setting change is complete.

NOTE

- The image quality settings for DVDs cannot be changed with this setting.

DVD Display Setting

The brightness, contrast, and colour tone of the DVD playback screen can be set.

- 1 Press the **HOME** key.
The home screen is displayed.
- 2 Touch **DVD** .
The DVD playback screen is displayed.
- 3 Touch **>>** , and then **>>** .
- 4 Touch **Display** .



You can make the settings concerning the screen.

NOTE

- The settings cannot be changed unless a DVD is inserted.

Brightness	Adjusts the brightness. Touching [+] makes the display brighter, touching [-] makes it dimmer. Allows you to adjust continuously by continuing the touch.
Contrast	Adjusts the contrast. Touching [+] increases the contrast, touching [-] decreases it. Allows you to adjust continuously by continuing the touch.
Tint	Adjusts the colour tone. Touching [+] makes the display more greenish, touching [-] makes it more reddish. Allows you to adjust continuously by continuing the touch.

- 5 Change the settings, then touch **Back** .

The DVD playback screen setting change is complete.

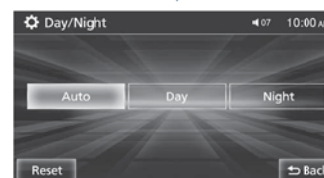
ADVICE

- You can also set this via the following procedure: [HOME] key→[Setting]→[Display]→[DVD Screen].

Day/Night Display Setting

The screen brightness can be set to "Auto", "Day", or "Night" according to the vehicle lighting state.

- 1 Press the **HOME** key.
The home screen is displayed.
- 2 Touch **Setting** , and then **Day/Night** .



You can make the settings concerning the screen.

Auto	The screen brightness can be linked to change with the vehicle lighting state (headlights and position lights). Lighting on: Screen is dimmed. Lighting off: Screen is bright. For some vehicle types, linking may only be carried out when the light switch is in Auto.
Day	Screen is constantly bright.
Night	Screen is constantly dimmed.

- 3 Change the settings, then touch **Back** .

The screen setting change is complete.

Clock

The time and format of the clock can be changed.

1 Press the HOME key.

The home screen is displayed.

2 Touch Setting , and then Clock .



You can make the settings concerning the time.

Time Format	Sets 12h or 24h format.
Time Setting	Adjusts time by touching [-] or [+].

3 Change the settings, then touch Back .

The time setting change is complete.

Language

The language displayed can be changed.

1 Press the HOME key.

The home screen is displayed.

2 Touch Setting , and then Language .

3 Touch the “language” to change to.



4 Touch Back .

The language setting change is complete.

NOTE

- The screen is an example. The options vary depending on the vehicle.
- Depending on the vehicle, certain languages are not supported.

Other Settings

The setting can be made on the screen or on the Bluetooth device.

Display Off

This deletes the screen display.

1 Press the HOME key.

The home screen is displayed.

2 Touch Display OFF .



This deletes the screen display.

ADVICE

- Touch [Display ON] to return to the original screen.

Clock Screen

Displays the clock over the entire screen.

1 Press the VOL/PUSH PWR key.



The clock is displayed.

ADVICE

- With [HOME], [Settings], then [Clock], you can change the format for time display. → "Clock" (P66)
- Press the [VOL/PUSH PWR] key again to return to the original screen.

Bluetooth Setting

You can use the Bluetooth function to connect any commercially-available Bluetooth device to this product.

What Bluetooth is

Bluetooth is a wireless communications standard specialised for connecting devices over short distances (a few meters or less). Since it uses radio waves, it is not directional. Thanks to its characteristic, communications are possible even if there is an obstruction. This makes it possible to communicate, even with the mobile phone still in your shirt pocket or briefcase or shoulder bag.

NOTE

- This product supports Ver. 2.1 + EDR.

Supported profiles

Bluetooth AUDIO	A2DP(v1.1) AVRCP(v1.3)
Hands-free	HFP(v1.5)
Phonebook transfer	PBAP(v1.0)

Continued on the next page

NOTE

- Cancel functions such as the mobile phone “dial lock”, and connect while on the standby screen.
- While connected, operations on the Bluetooth device (receiving calls, etc.) may not function correctly.
- For details on how to enter the passkey for your Bluetooth device, refer to its user manual.
- The connection fails sometimes. Register again.
- Depending on the distance between this product and your Bluetooth device, the conditions within the vehicle, and types of screening, connection may not be possible. In this case, put your Bluetooth as close as possible to this product.
- Even though a device is Bluetooth-capable, its characteristics and specifications may mean that correct operation is not possible.
- Some Bluetooth devices cannot be connected.
- Depending on the Bluetooth device, connecting may take some time.

Registering a Bluetooth Device

Register a Bluetooth device with this product.

- 1 Press the **HOME** key.**
The home screen is displayed.
- 2 Touch **Setting** , and then **Bluetooth** .**
- 3 Touch **New Devices** .**
- 4 Touch the device to connect.**



Touch [Refresh] to reacquire and display the connectable device information.



Allow pairing on the Bluetooth device to connect automatically.

ADVICE

- Up to 5 Bluetooth devices can be registered.
If 5 devices are already registered, you must delete one before you can register a new Bluetooth device.
- Some Bluetooth devices require a pass key.
- If the pass key is incorrect, redo the Bluetooth device side operations from the start.
- Some Bluetooth devices require a special passcode.
- Depending on the Bluetooth device's settings, it may be necessary to enter the passcode each time the device is connected.
- Carry out the procedure for entering the passcode to the Bluetooth device according to its user manual.
- Some Bluetooth devices do not require a passcode entry.

Selecting a Bluetooth Device

If you have registered multiple Bluetooth devices, you must select the one to connect. (From then on, the Bluetooth device you set with this function is connected by you just bringing it into the vehicle.)

- 1 Press the **HOME** key.
The home screen is displayed.
- 2 Touch **Setting** , and then **Bluetooth** .
- 3 Touch **Paired Device** .
- 4 Touch the “device name” to connect.

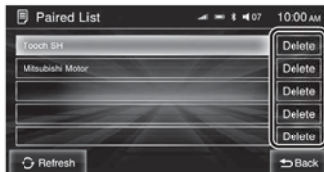


This completes selection of the Bluetooth device.

Deleting a Registered Device

Deletes the Bluetooth device information registered with this product.

- 1 Press the **HOME** key.
The home screen is displayed.
- 2 Touch **Setting** , and then **Bluetooth** .
- 3 Touch **Paired Devices** .
- 4 Touch **Delete** for the Bluetooth device to delete.



This completes deletion of the Bluetooth device.

Other

Troubleshooting

Please check these items if a message appears on the screen, or if you think something is not working properly.

If This Message Appears...

A message is displayed on the screen of this product according to the situation.

Message	Cause	Response
Play is impossible due to a mechanism error.	The drive has malfunctioned for some reason.	Check that there is no problem with the disc, and insert the disc again. If the problem persists, consult with your dealer.
	The disc is damaged or warped.	Do not insert a damaged or warped disc.
Cannot be played. Check the disc.	A disc is inserted that cannot be played.	Insert a disc that can be played. →“Types of Disc That Can Be Played Back”(P19)
	The disc is inserted upside down.	Insert with the label side up.
	The disc has condensation on it.	Wait a while before inserting again.
	The disc is dirty.	Clean the read surface of the disc.
This iPod cannot be played.	Authentication failed.	Reconnect your iPod.
	The connected iPod has an unsupported format and cannot be recognized.	Use an iPod that supports this product. (P6)
	This iPod software version is not correct.	Please change to a supported software version.
This USB device cannot be played.	An unsupported USB device has been connected.	Reconnect a supported USB device. →“Listen to Audio Files on a USB Device” (P47)
No data that can be played.	There are no audio files that can be played back.	Add audio files that can be played. →“Audio Files (MP3/WMA/AAC)” (P21)
	An iPod not containing any tracks has been connected.	Connect an iPod containing tracks.

If You Think Something Is Not Working Properly...

Here is a list of symptoms, causes and responses if you think something is not working properly.

Symptoms	Cause	Response
Cannot operate.	For safety, some operations are restricted while the vehicle is moving.	The driver should refrain from operating this product while the vehicle is moving. First stop the vehicle in a safe location, then operate this product.
The operation sound is not made.	The operation sound is set to [Off].	Set the [Sound] "Operation Volume" to [1],[2],[3]. → "Beep sound" (P64)
Nothing is displayed on the screen.	The screen is turned OFF.	Stop the vehicle in a safe location, apply the parking brakes, then perform the operation to turn the screen back ON (P67).
	The vehicle's battery voltage has dropped.	Charge or replace the battery.
	The temperature inside the product is high.	Please wait for the temperature to drop.
The monitor screen is dark.	The monitor brightness is not correctly adjusted.	Adjust the monitor brightness. → "Display Setting" (P64)
There is no sound or quiet sound.	The volume is turned to its minimum.	Adjust the volume. → "Adjust Volume" (P15)
	The balance or fader is turned to one side.	Adjust the balance or fader. → "Adjust the Sound Quality" (P62)
	"Audio OFF".	Switch to "Audio ON". → "Switch Audio ON/OFF" (P15)
The disc cannot be played.	The disc is inserted upside down.	Insert with the label side up.
	The disc has condensation on it.	Wait a while before inserting.
	The disc is dirty.	Clean the read surface of the disc.

Other

MEMO

This device complies with part 15 of FCC Rules and Industry Canada's licence-exempt RSSs. Operation is subject to the following two conditions: (1) this device may not cause harmful interference, and (2) this device must accept any interference received, including interference that may cause undesired operation.

Le présent appareil est conforme à la partie 15 des règles de la FCC et aux normes des CNR d'Industrie Canada applicables aux appareils radio exempts de licence. L'exploitation est autorisée aux deux conditions suivantes : (1) l'appareil ne doit pas produire de brouillage, et (2) l'appareil doit accepter tout brouillage subi, même si le brouillage est susceptible d'en compromettre le fonctionnement.

Changes or modifications not expressly approved by the party responsible for compliance could void the user's authority to operate the equipment.

This transmitter must not be co-located or operated in conjunction with any other antenna or transmitter.

This equipment complies with FCC/IC radiation exposure limits set forth for an uncontrolled environment and meets the FCC radio frequency (RF) Exposure Guidelines and RSS-102 of the IC radio frequency (RF) Exposure rules.

This equipment has very low levels of RF energy that it deemed to comply without maximum permissive exposure evaluation (MPE). But it is desirable that it should be installed and operated keeping the radiator at least 20cm or more away from person's body.

Cet équipement est conforme aux limites d'exposition aux rayonnements énoncées pour un environnement non contrôlé et respecte les règles les radioélectriques (RF) de la FCC lignes directrices d'exposition et d'exposition aux fréquences radioélectriques (RF) CNR-102 de l'IC. Cet équipement émet une énergie RF tr ès faible qui est considérée conforme sans é valuation de l'exposition maximale autorisée. Cependant, cet équipement doit être installé et utilisé en gardant une distance de 20 cm ou plus entre le dispositif rayonnant et le corps.