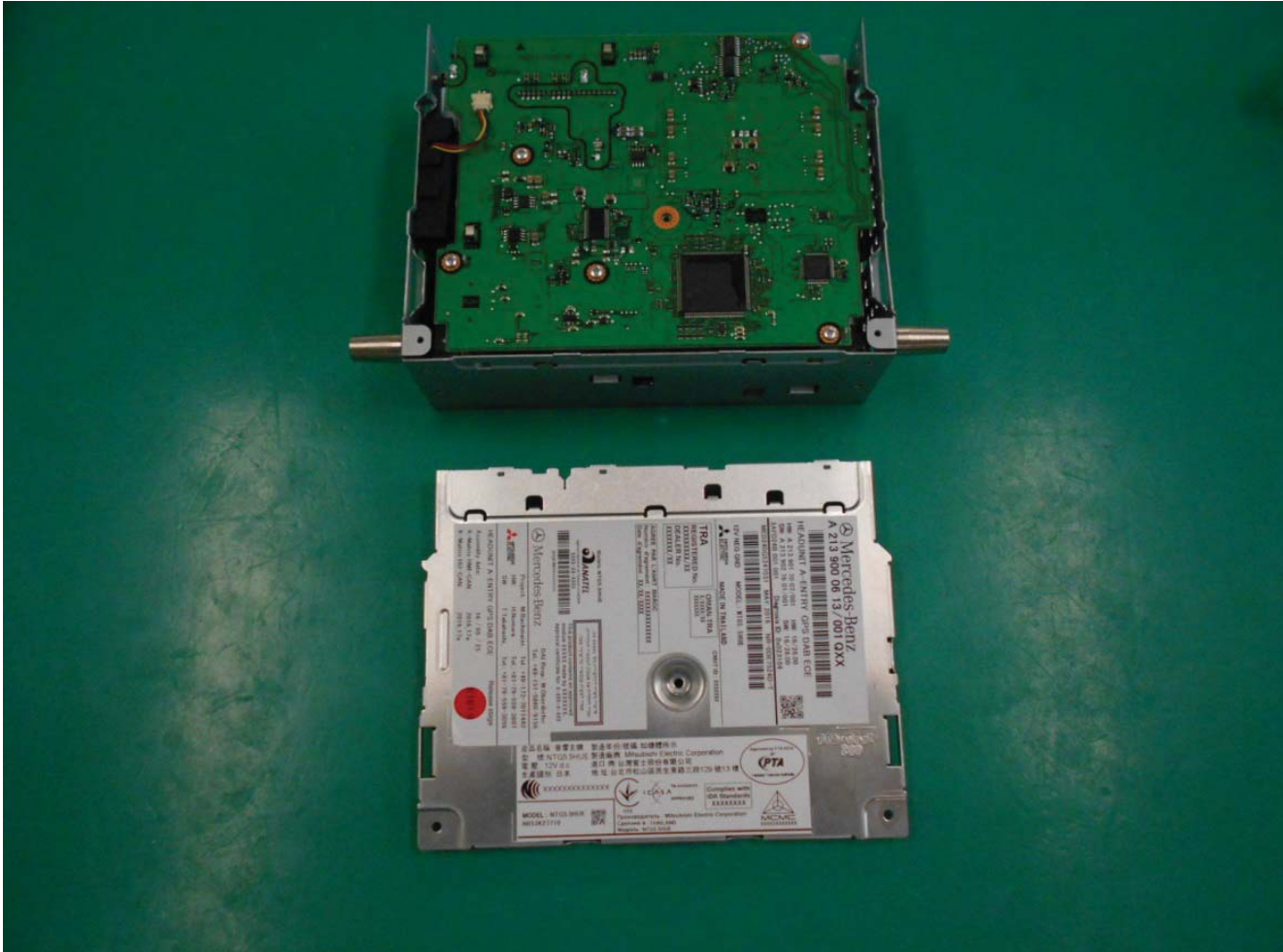


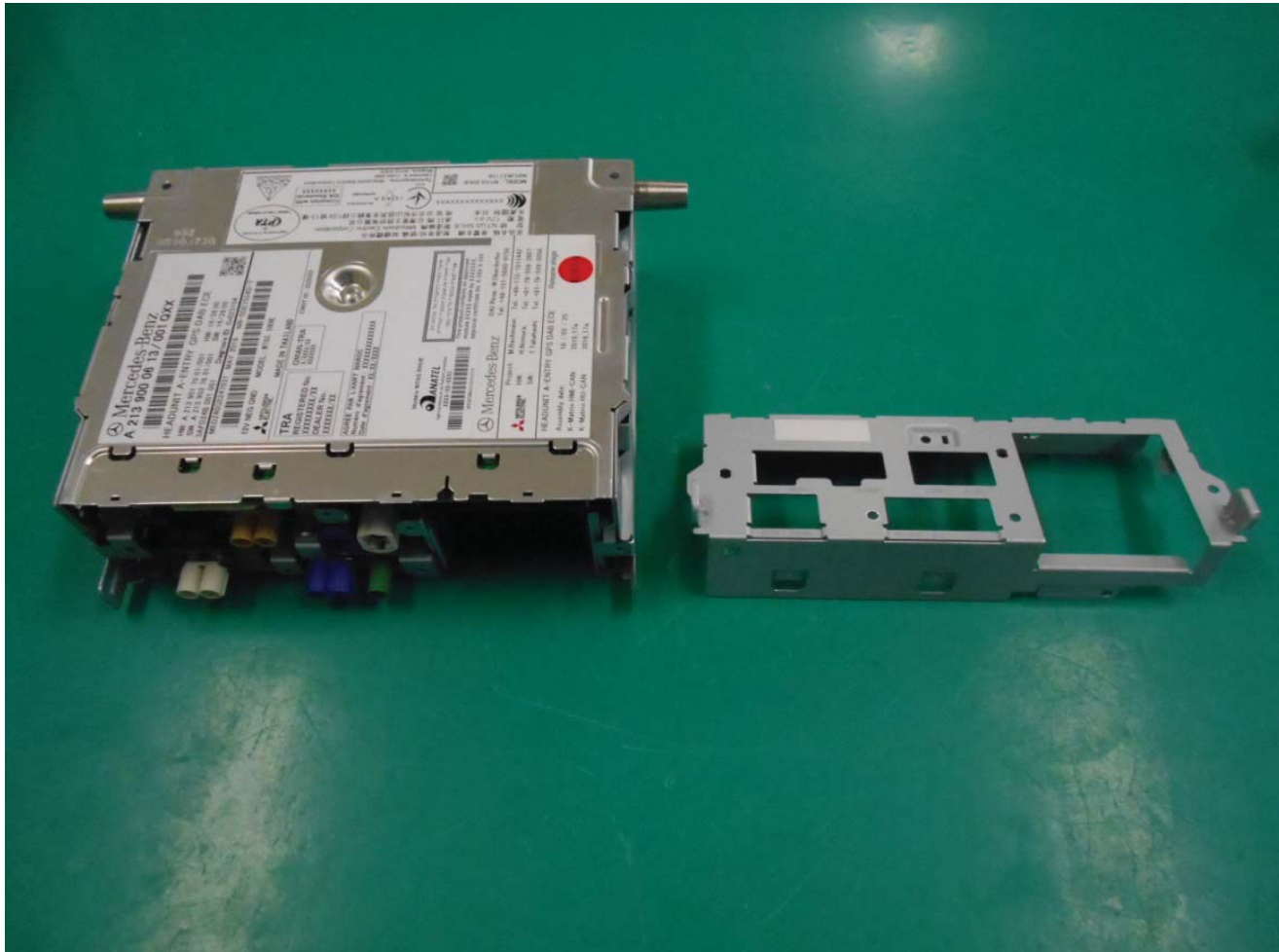
NTG5.5HUE Photo



7. Top Cover is removed.

Copyright(c) Mitsubishi Electric Corporation

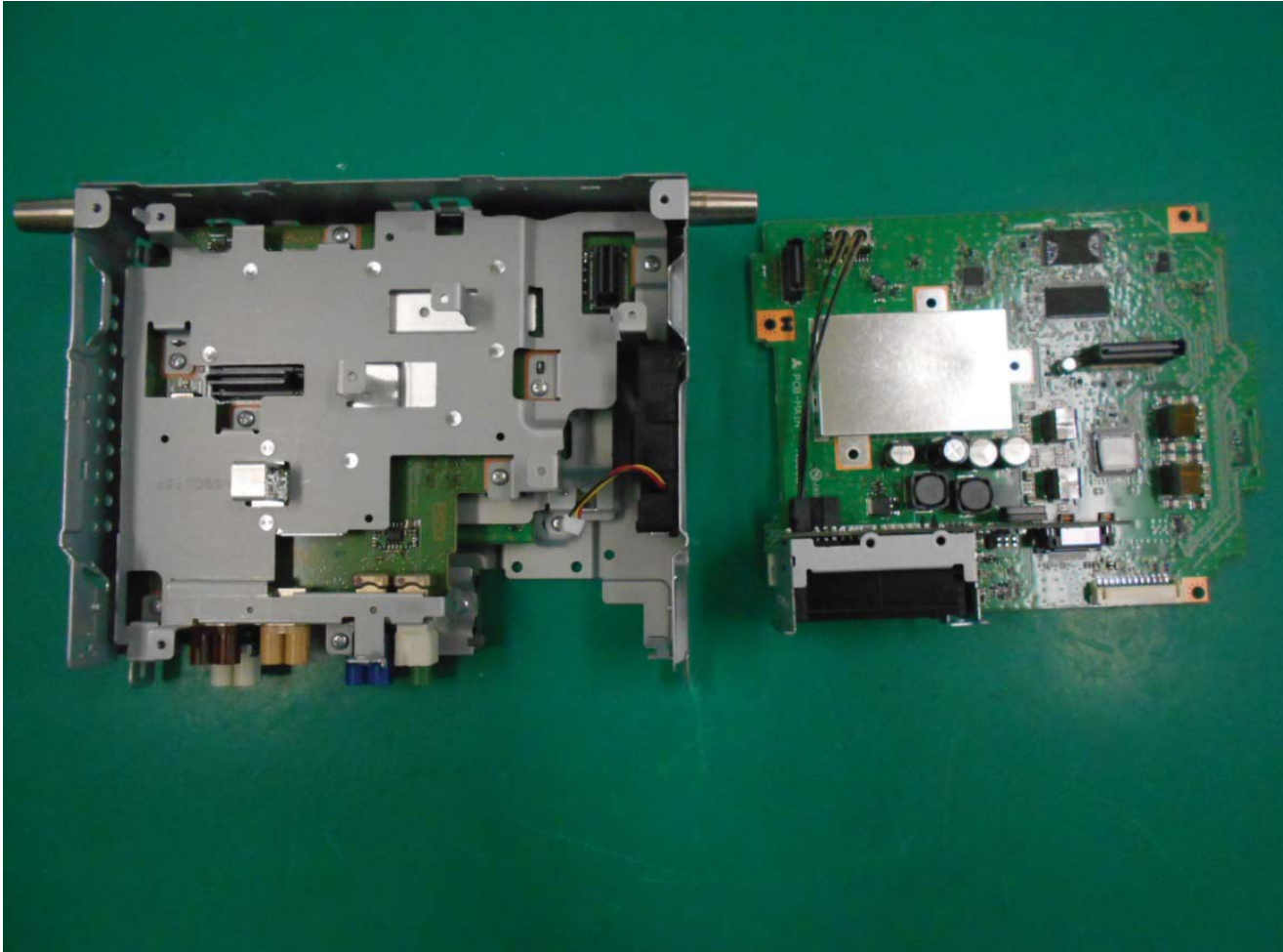
NTG5.5HUE Photo



8. Rear Cover is removed.

Copyright(c) Mitsubishi Electric Corporation

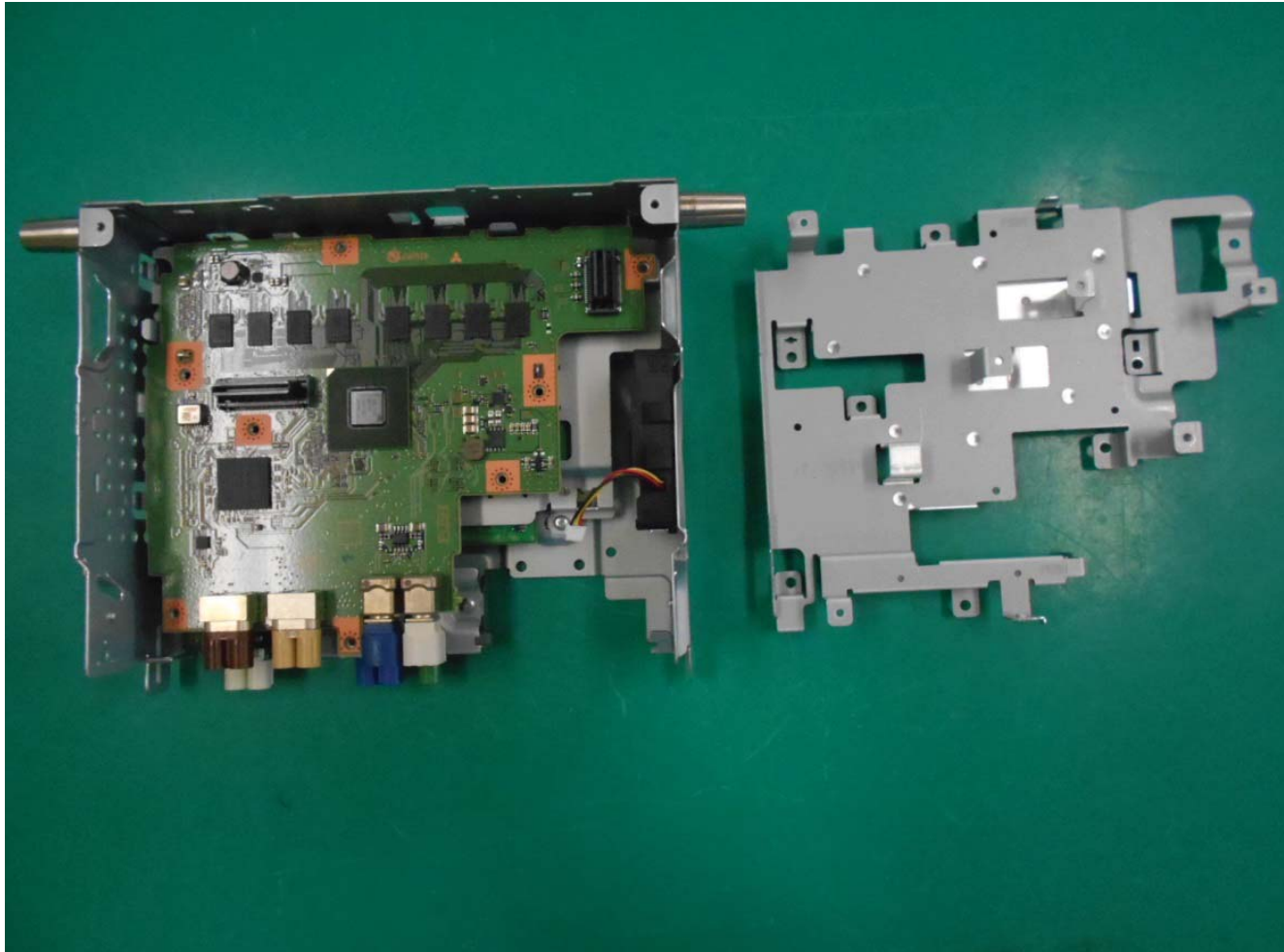
NTG5.5HUE Photo



9 PCB-MAIN is removed.

Copyright(c) Mitsubishi Electric Corporation

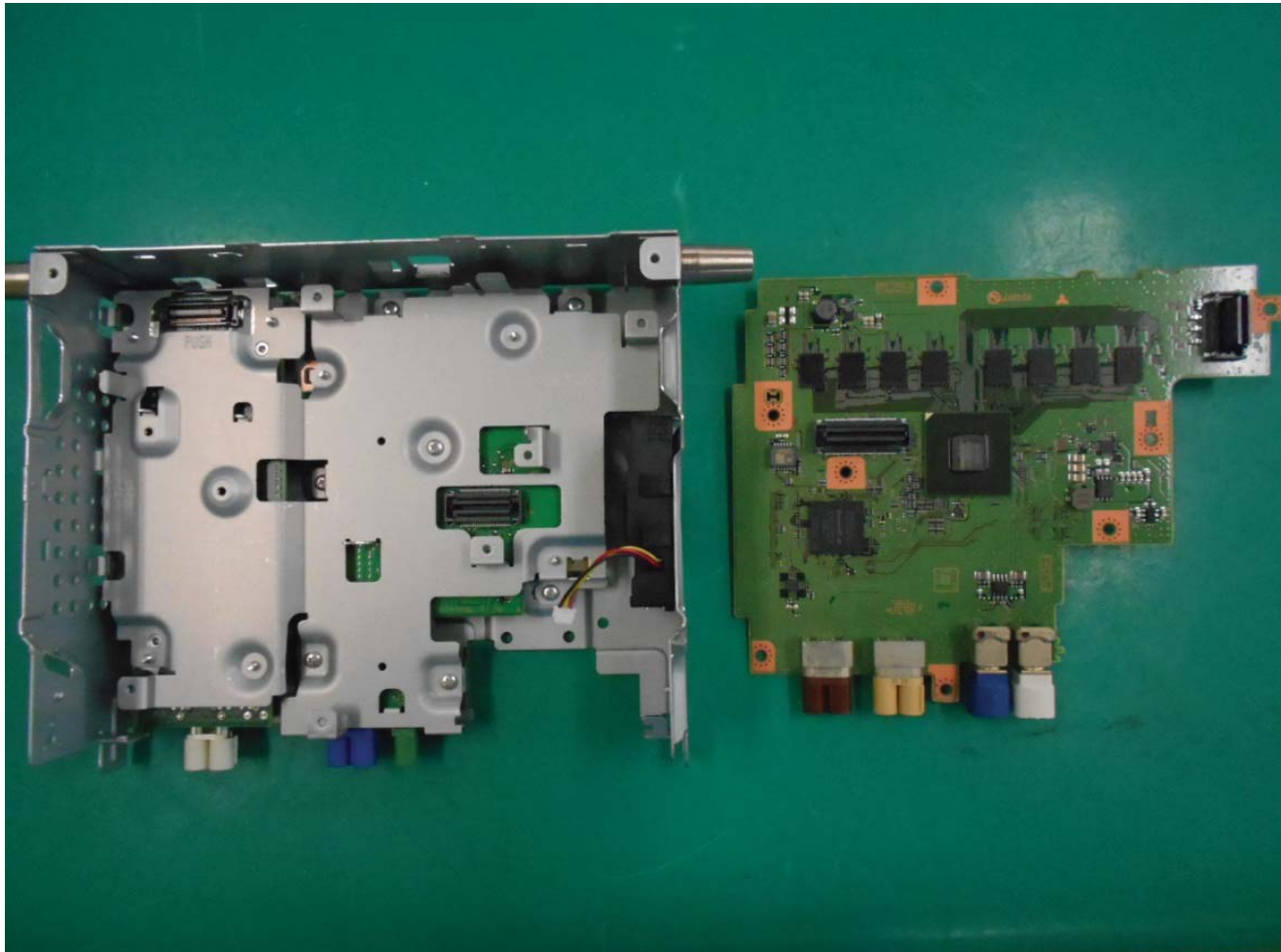
NTG5.5HUE Photo



10. PCB-NVI Cover is removed.

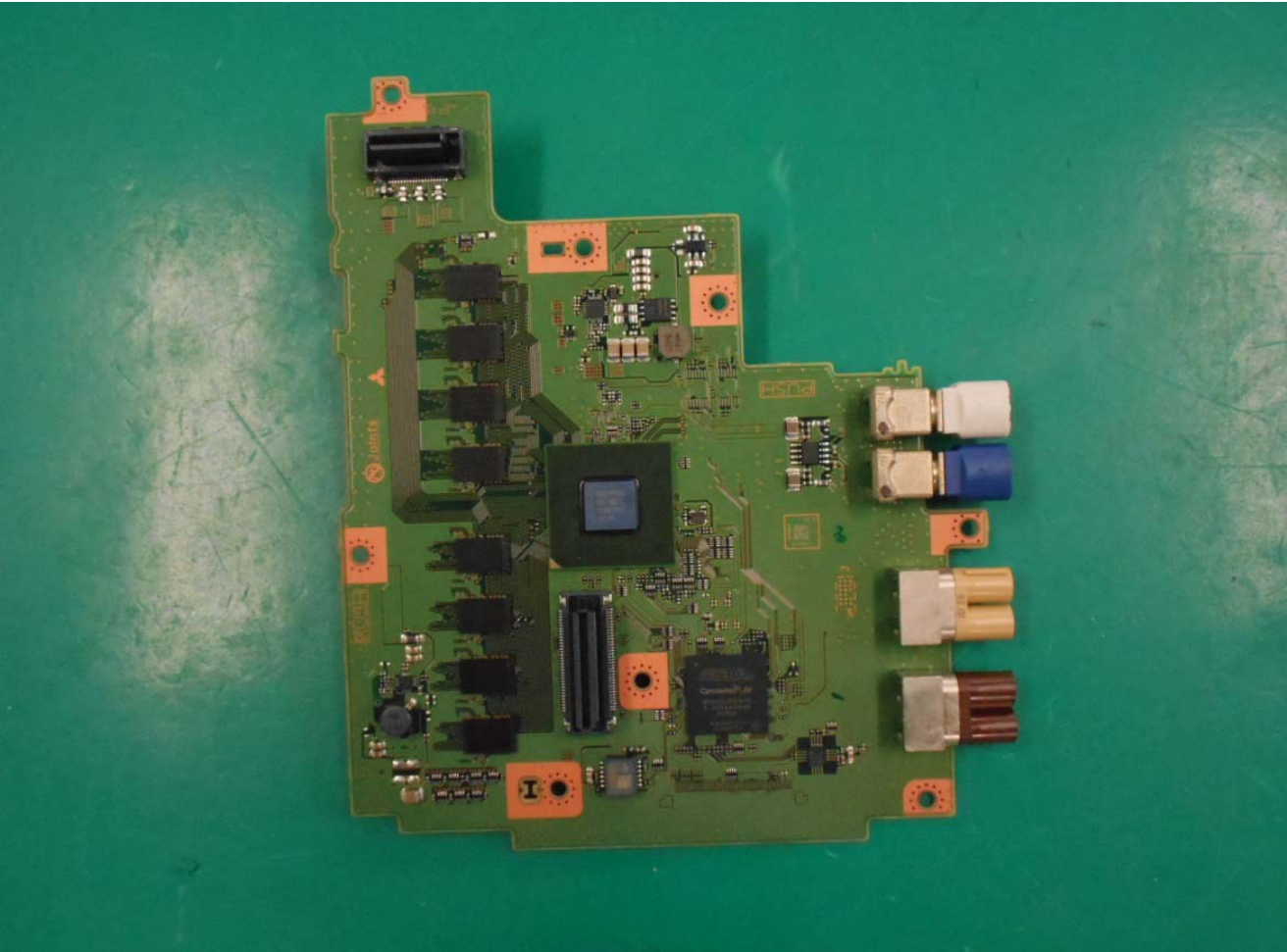
( 10 / 12 )

NTG5.5HUE Photo



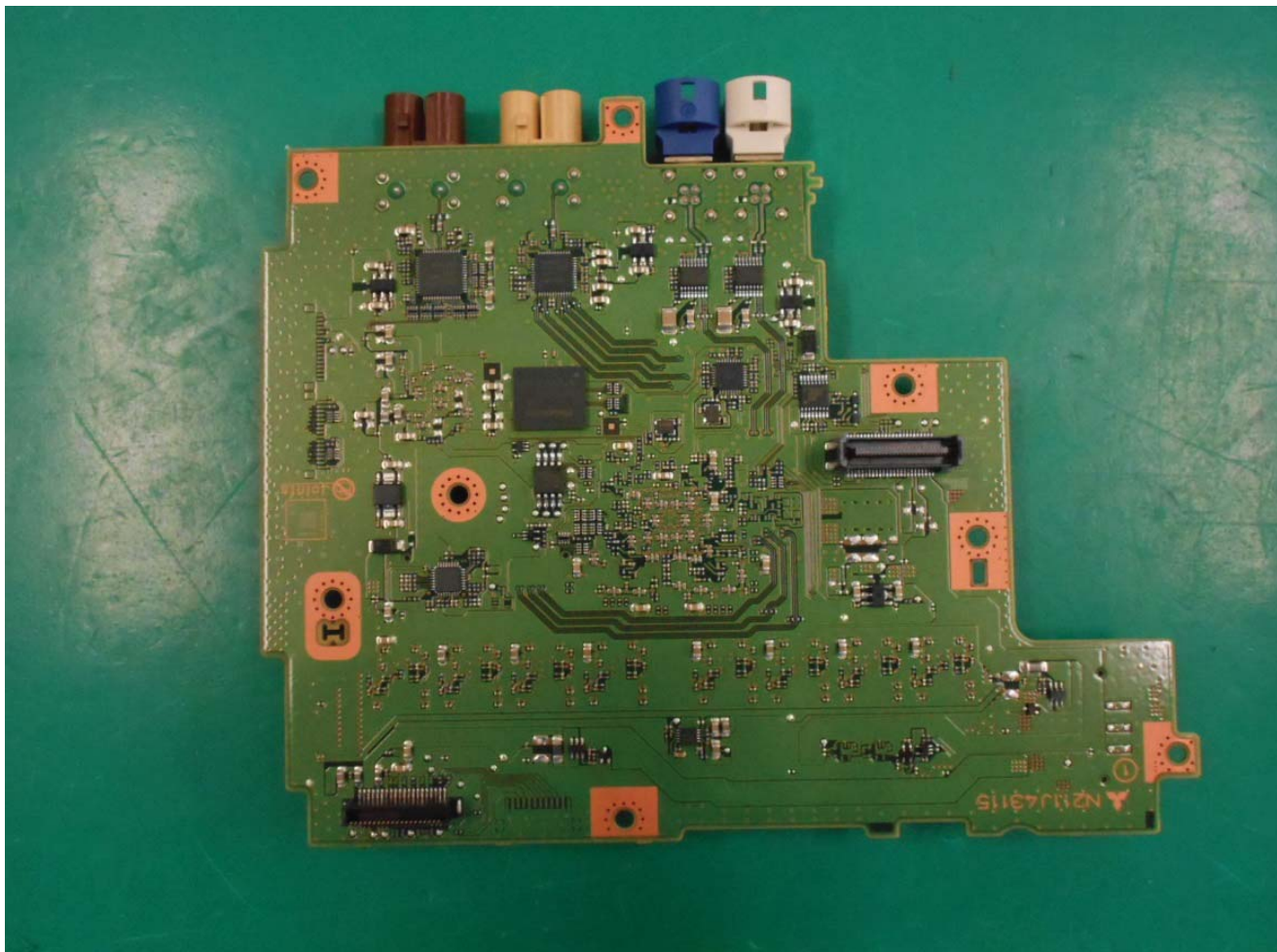
11. PCB-NAVI is removed.

NTG5.5HUE Photo



1. PCB-NAVI C-side

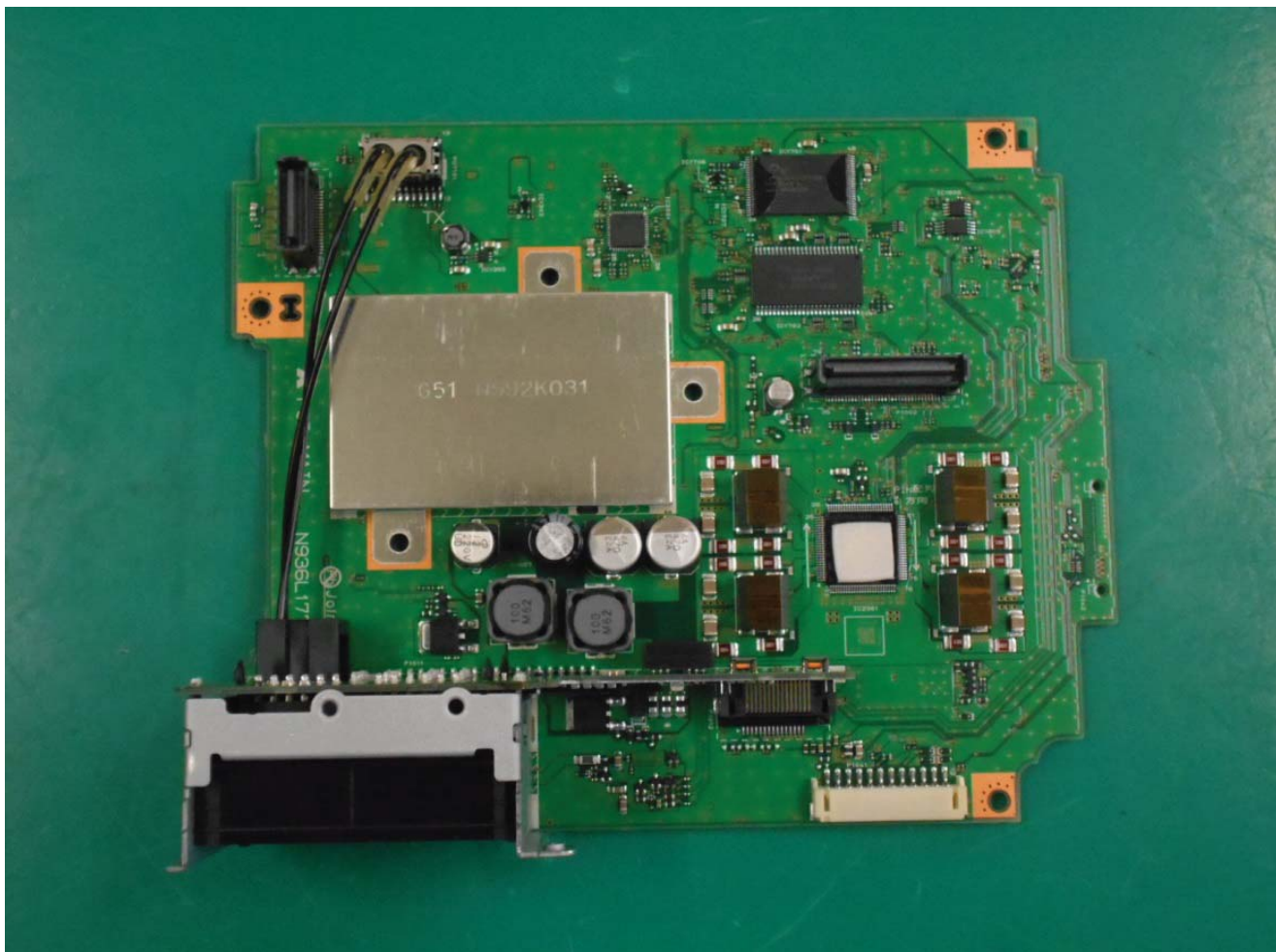
NTG5.5HUE Photo



2. PCB-NAVI S-side

Copyright(c) Mitsubishi Electric Corporation

NTG5.5HUE Photo

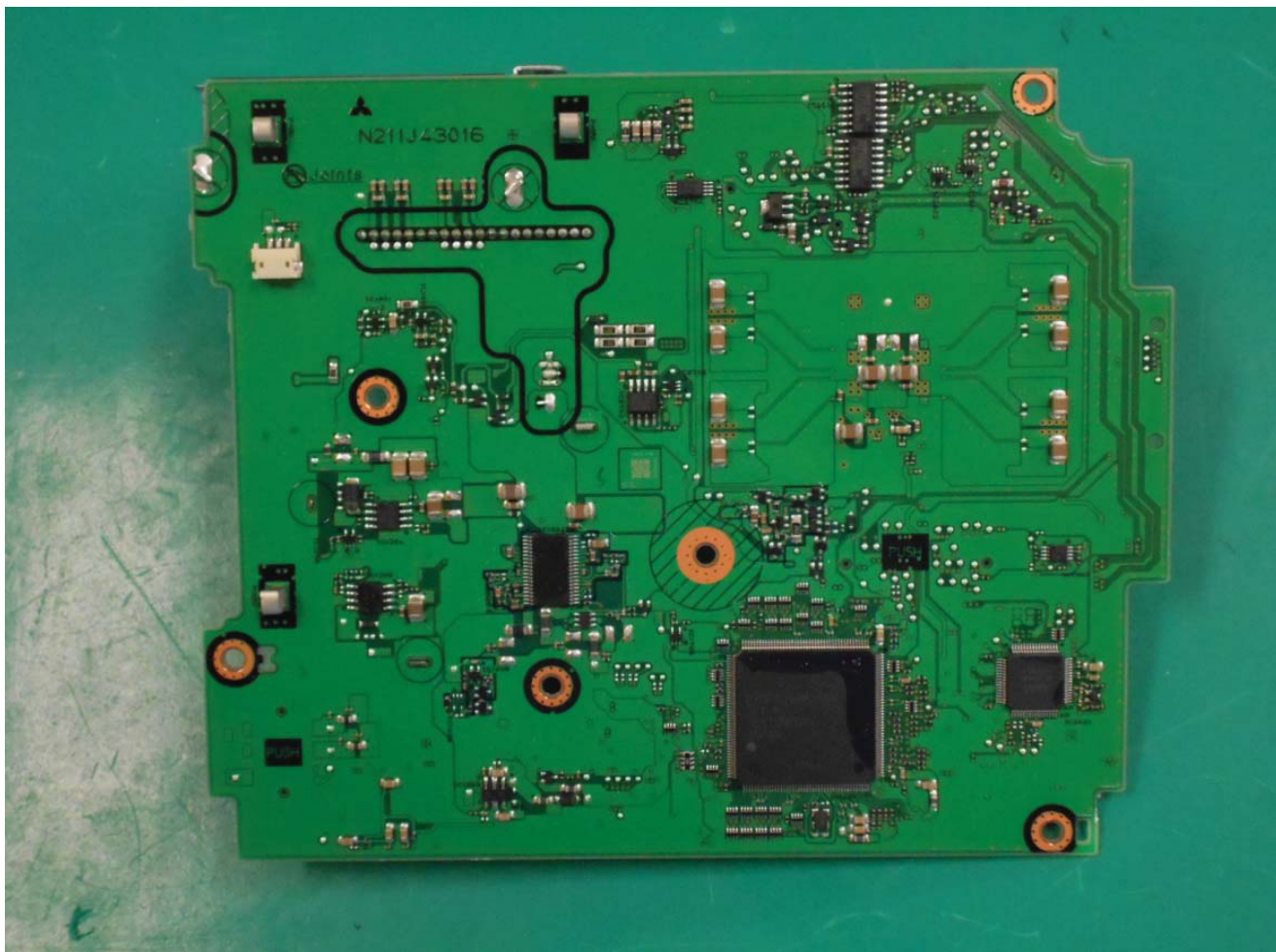


3. PCB-MAIN C-side

Copyright(c) Mitsubishi Electric Corporation



NTG5.5HUE Photo

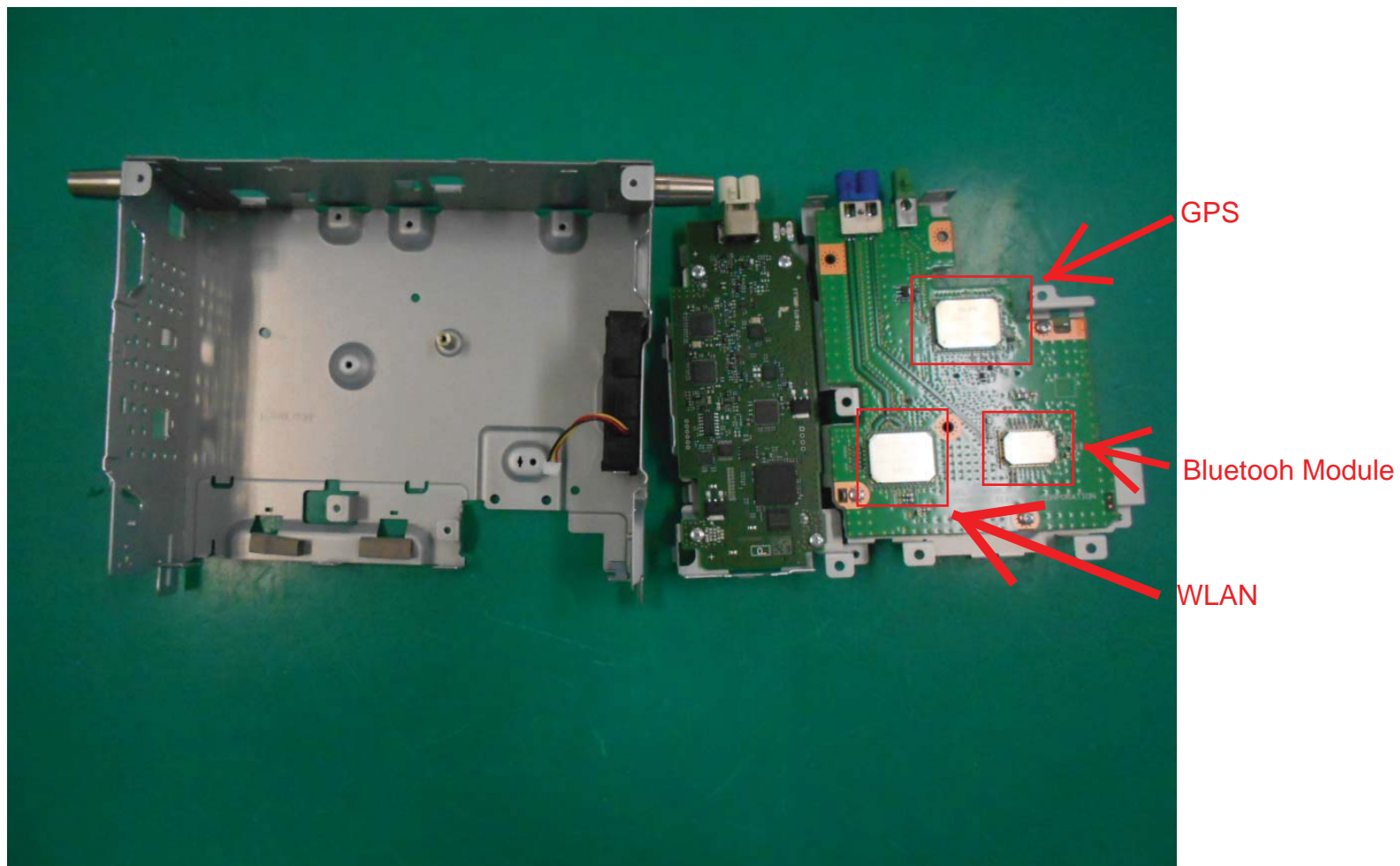


4. PCB-MAIN S-side

Copyright(c) Mitsubishi Electric Corporation

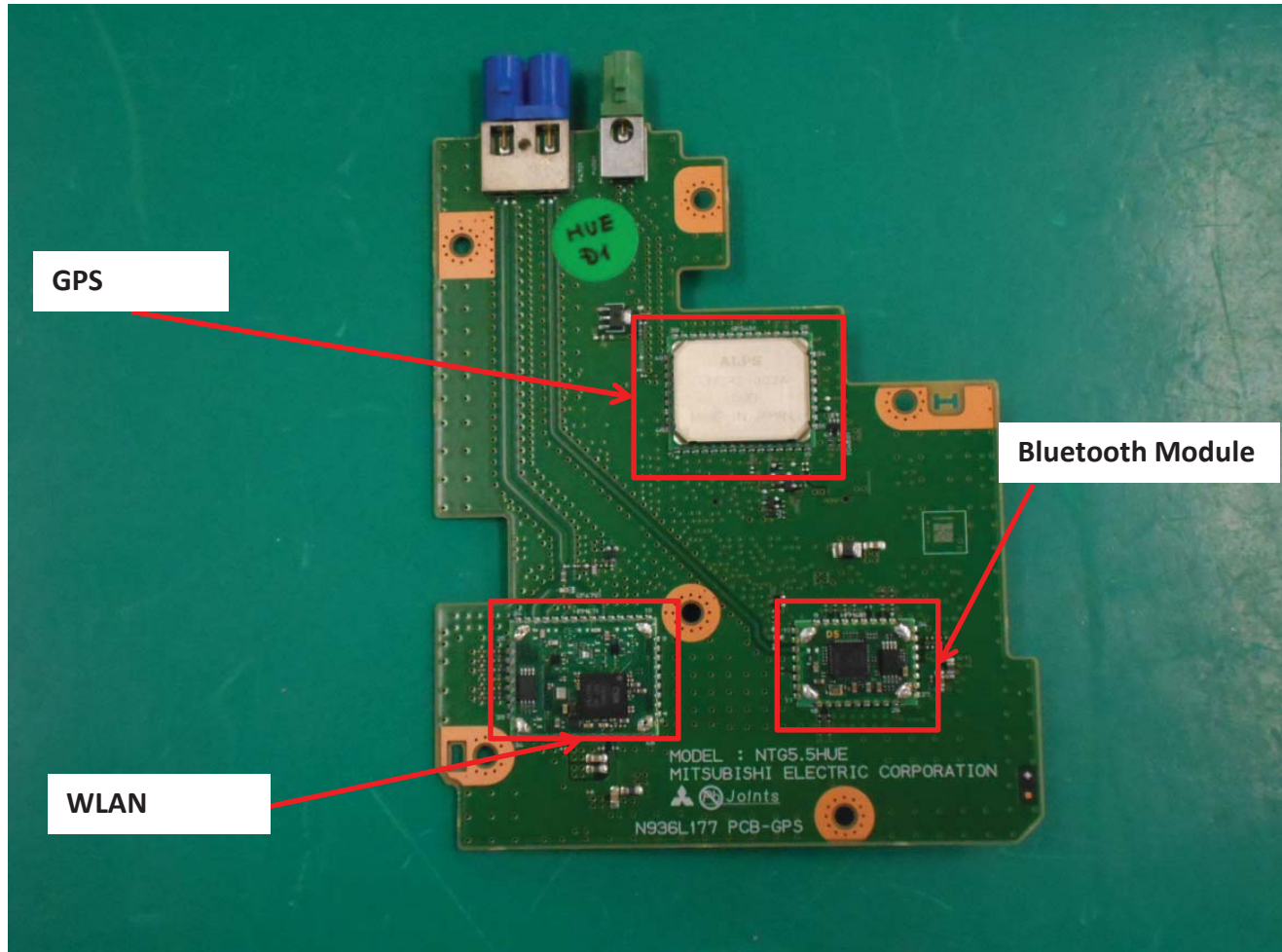
Copyright(c) Mitsubishi Electric Corporation

NTG5.5HUE Photo



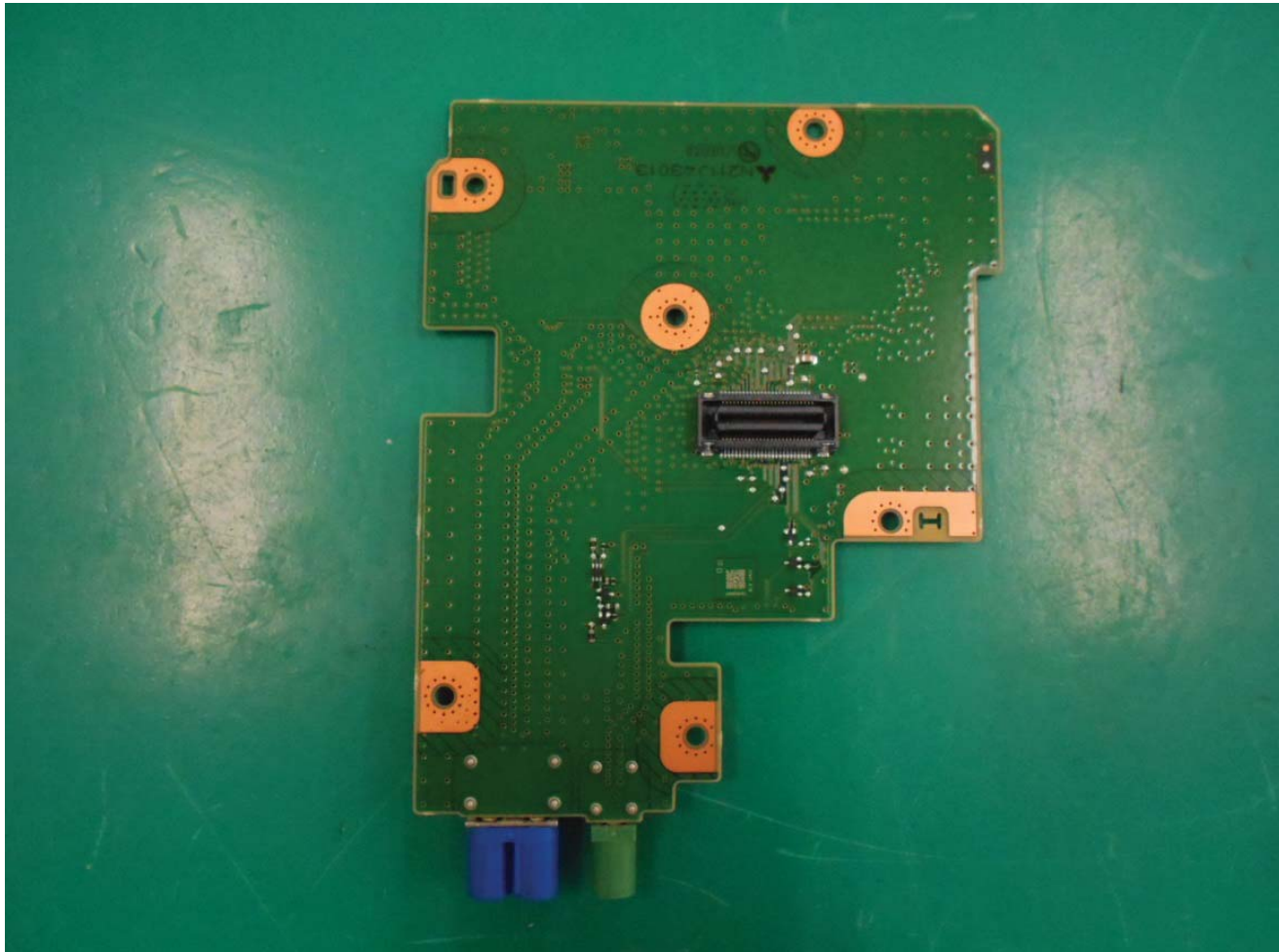
12. PCB-Tuner and PCB-GPS is removed.

NTG5.5HUE Photo



5. PCB-GPS C-side

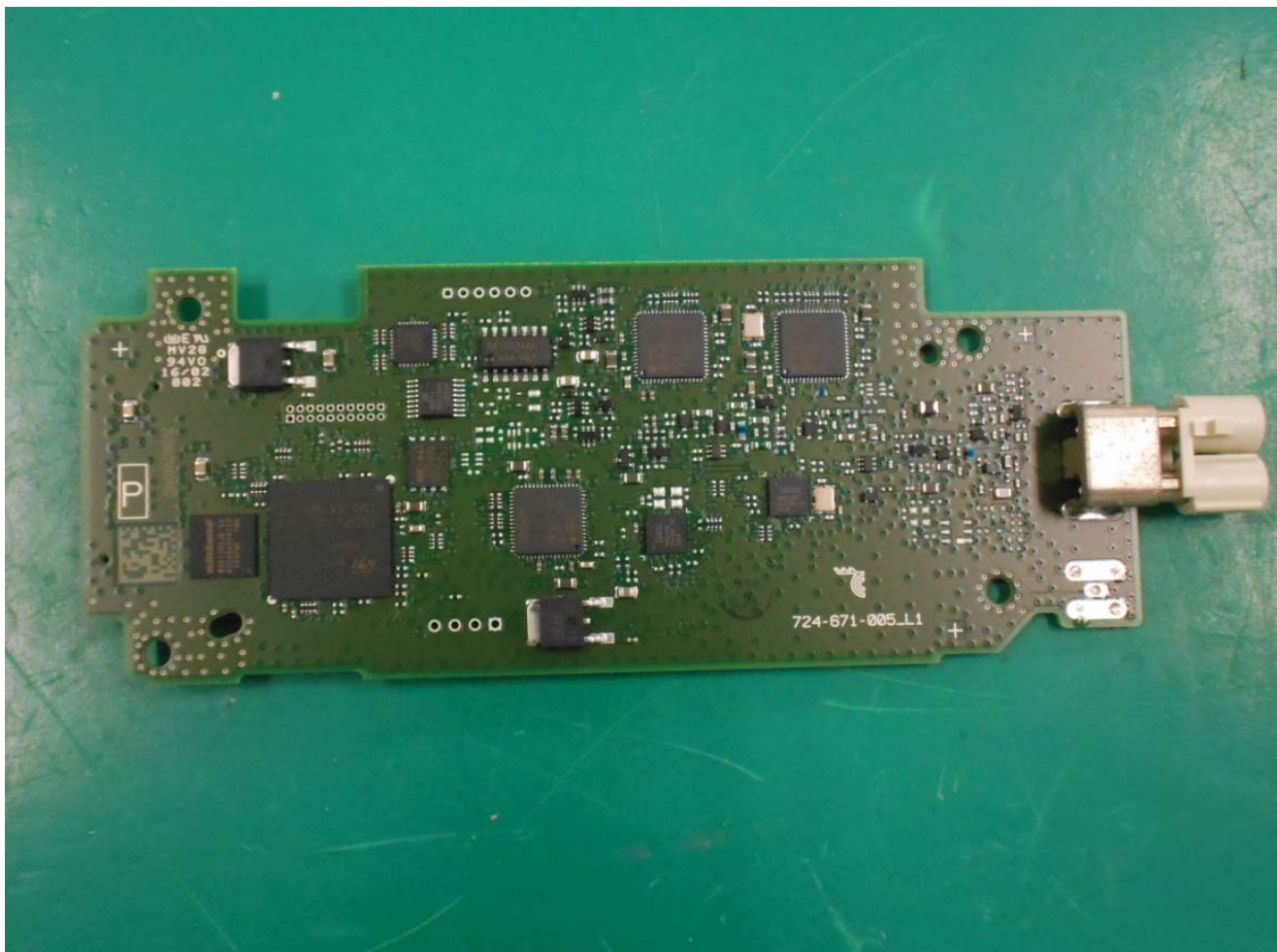
NTG5.5HUE Photo



6. PCB-GPS S-side

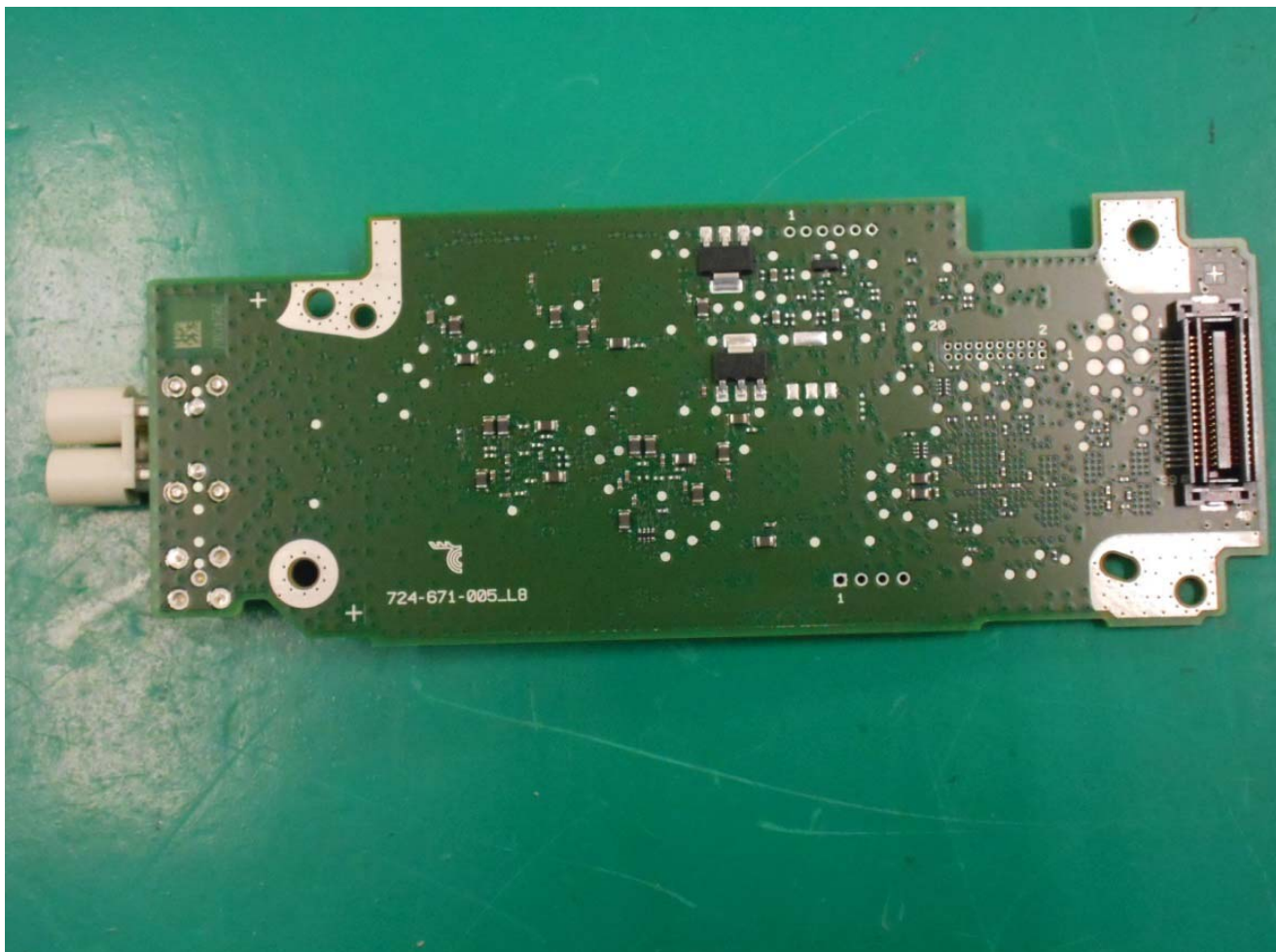
Copyright(c) Mitsubishi Electric Corporation

NTG5.5HUE Photo



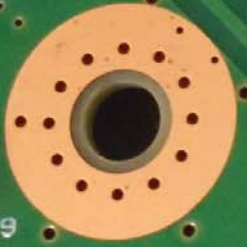
7. PCB-TUNER C-side

NTG5.5HUE Photo



8. PCB-TUNER S-side

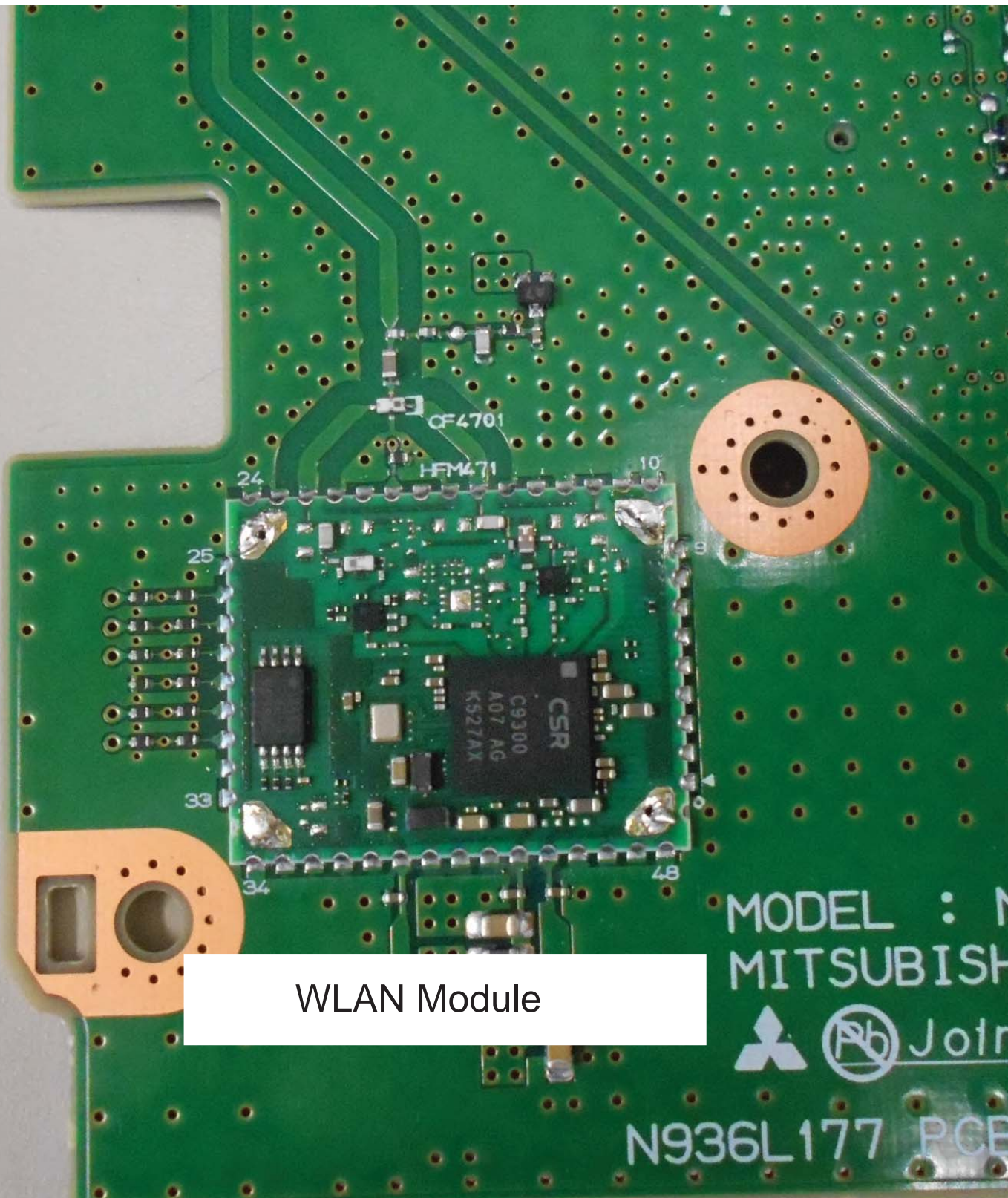
Copyright(c) Mitsubishi Electric Corporation



Bluetooth Module

MODEL : NTG5.5HUE  
MITSUBISHI ELECTRIC CORPORATION  
  Joints





WLAN Module

MODEL : M  
MITSUBISHI



Join

N936L177 PCE