

NR-204 US Photo

1. FRONT SIDE VIEW
2. TOP SIDE VIEW
3. RIGHT SIDE VIEW
4. REAR SIDE VIEW
5. LEFT SIDE VIEW
6. BOTTOM SIDE VIEW
7. Remove HDD Unit
8. Remove Switch Panel Unit
9. Remove Top Cover
10. Remove Front Metal Plate
11. Remove Left Metal Plate
12. Remove Right Metal Plate
13. Remove Rear Metal Plate
14. Remove Bottom Metal Plate
15. PCB-GPS visible (Bluetooth Module mounting)



1. FRONT SIDE VIEW



A 204 820 79 89 ZGS: 002 E10.0

RC2



CE

MERCEDES-BENZ

Head Unit High US Changer

HW: A 204 870 12 89 ZGS: 007 HW: 06/10



SW: A 204 442 06 60 ZGS: 019 SW: 06/08/00

ME346062170004 Diagnosis ID: A100



3AF346B 002 007



MITSUBISHI ELECTRIC NR-204-6U 12V NEG GND MADE IN JAPAN

Manufactured under license from Dolby Laboratories. "DOLBY", "MLP Lossless", and the double-D symbol are trademarks of Dolby Laboratories. "U.S. Patent Nos. 4,631,603; 4,819,098; 4,907,093; 5,315,448; and 6,516,132."

DANGER
INVISIBLE LASER RADIATION WHEN OPEN AND INTERLOCK FAILED OR DEFEATED. AVOID DIRECT EXPOSURE TO BEAM.

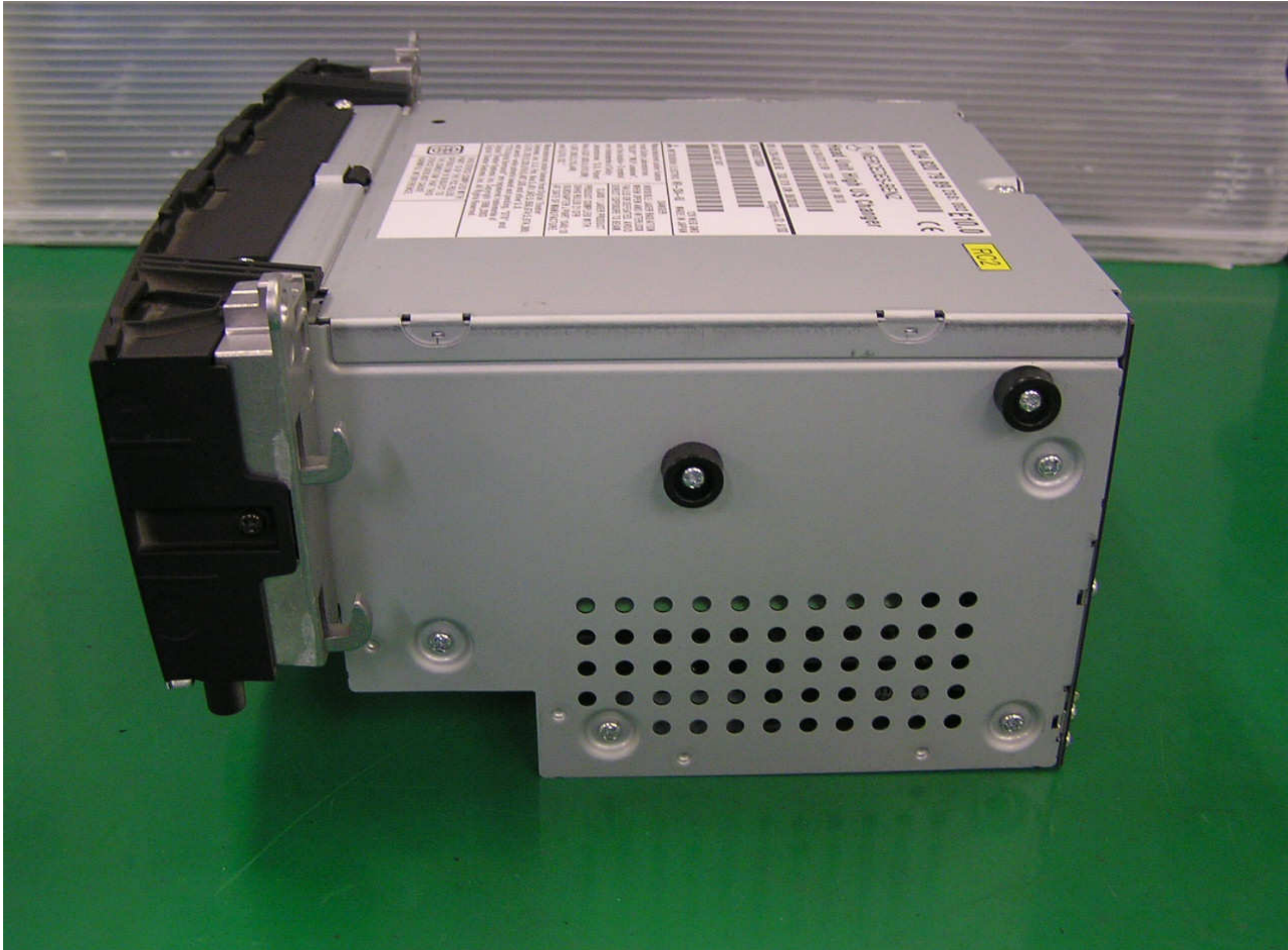
CLASS 1 LASER PRODUCT
PRODUCT COMPLIES WITH
DHHS RULES 21 CFR
SUBCHAPTER J PART 1040.10
AT DATE OF MANUFACTURE.

Manufactured under license from Digital Theater Systems, Inc. U.S. Pat. Nos. 5,451,942; 5,956,674; 5,974,380; 5,978,762; 6,226,816; 6,487,535 and other U.S. and world-wide patents issued and pending. "DTS" and "DTS Digital Surround" are registered trademarks of Digital Theater Systems, Inc. Copyright 1996, 2003 Digital Theater Systems, Inc. All Rights Reserved.

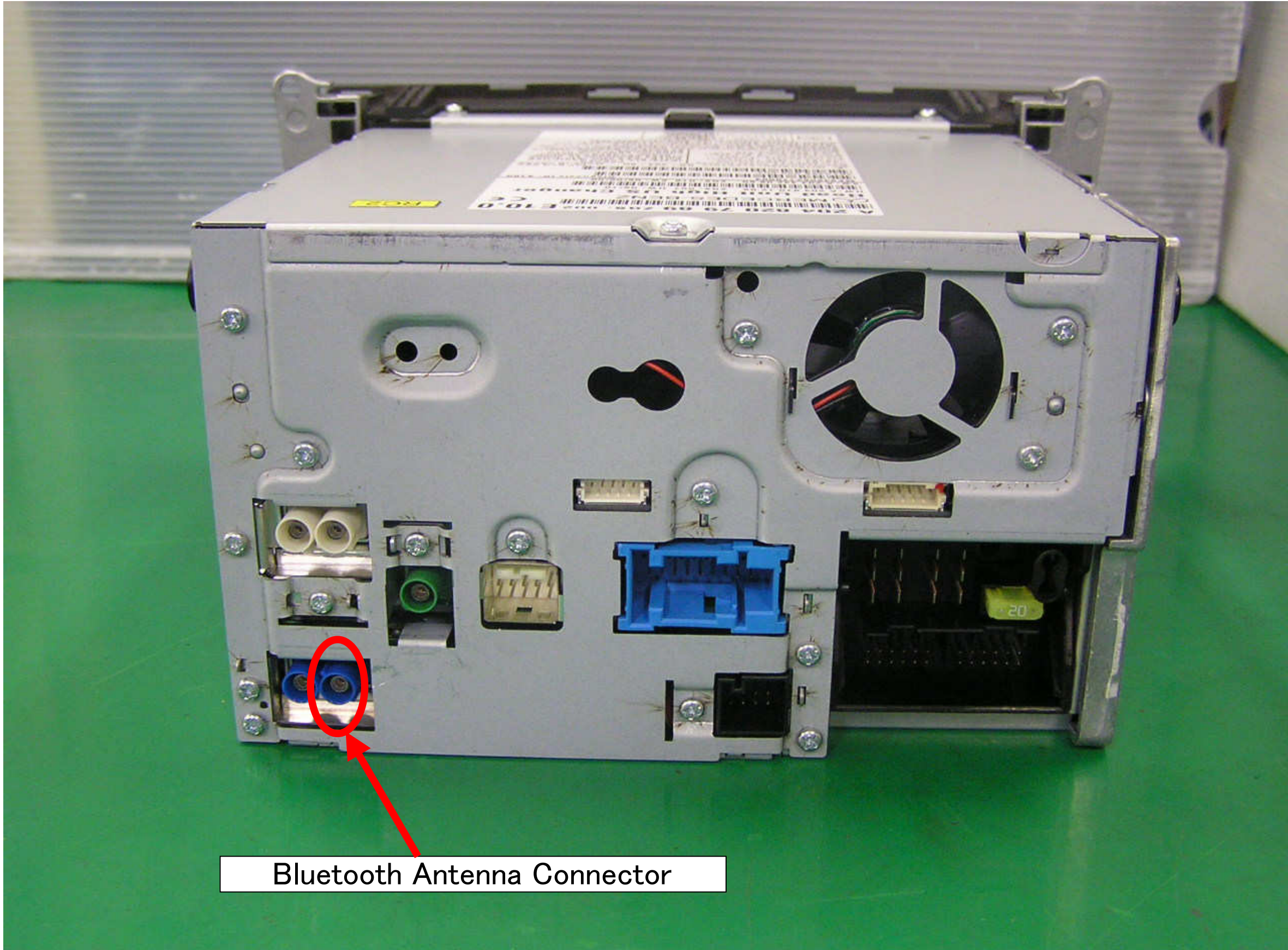


THIS DEVICE COMPLIES WITH PART 15 OF THE FCC RULES. OPERATION IS SUBJECT TO THE CONDITION THAT THIS DEVICE DOES NOT CAUSE HARMFUL INTERFERENCE.

2. TOP SIDE VIEW

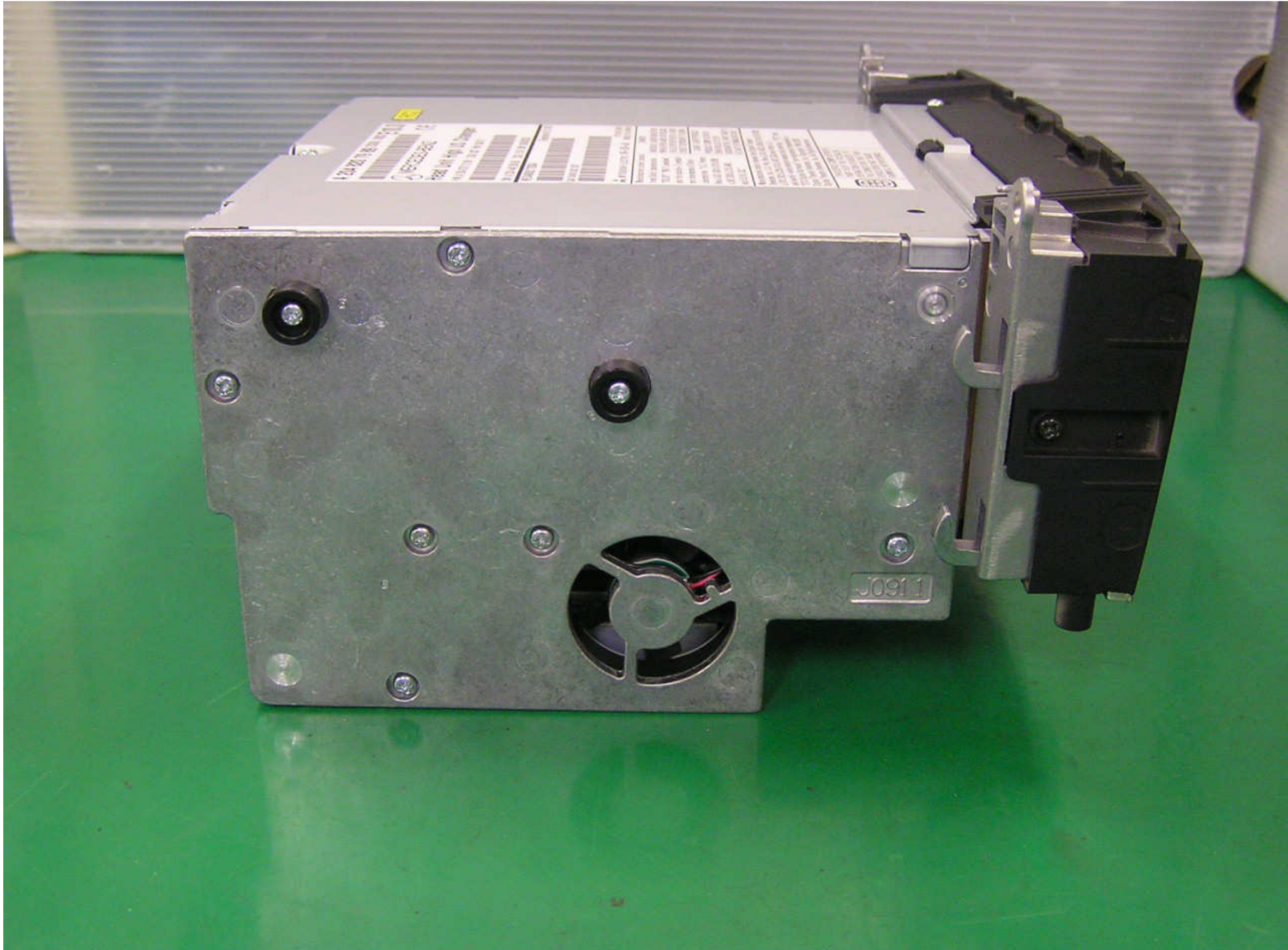


3. RIGHT SIDE VIEW

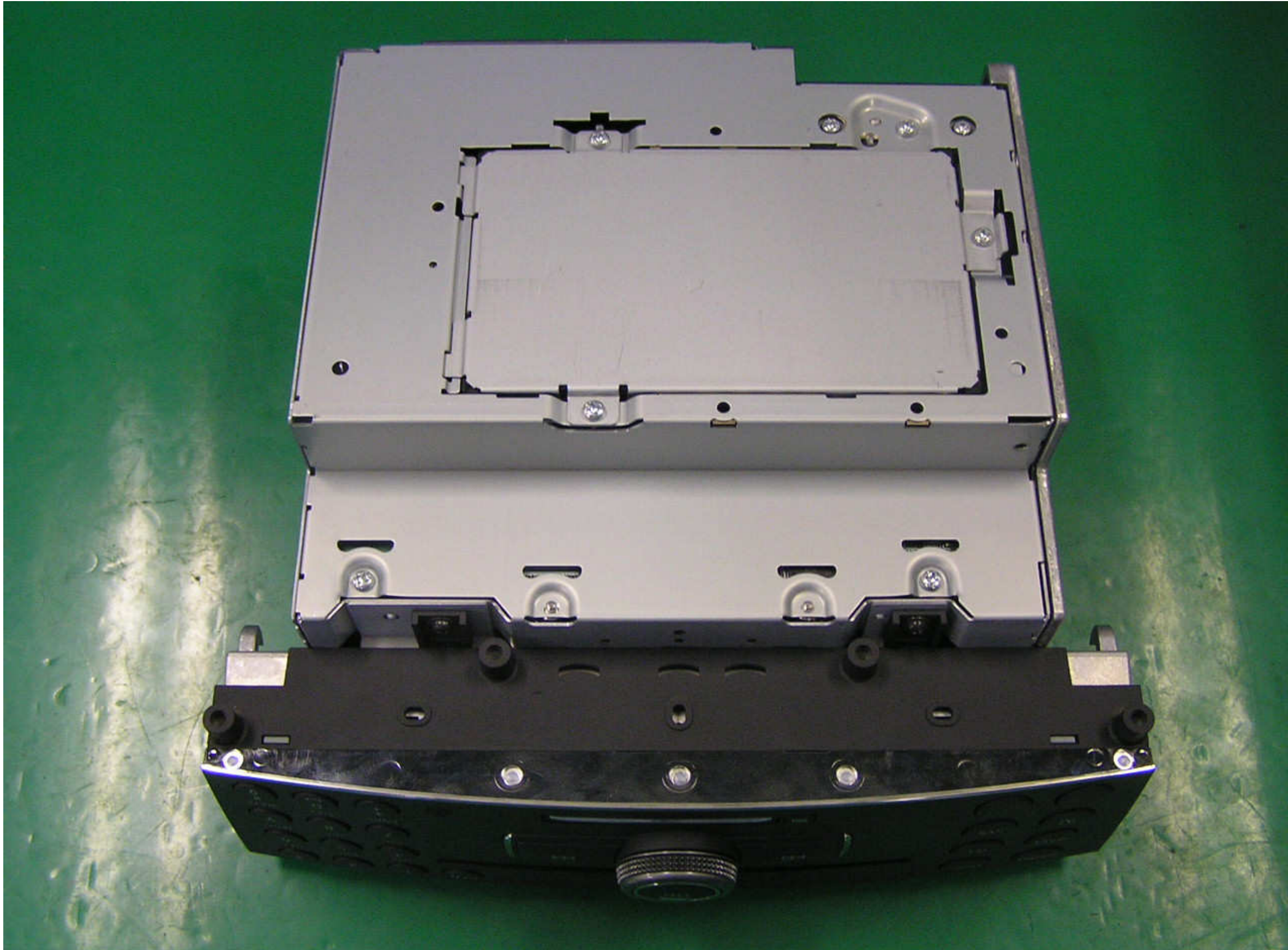


Bluetooth Antenna Connector

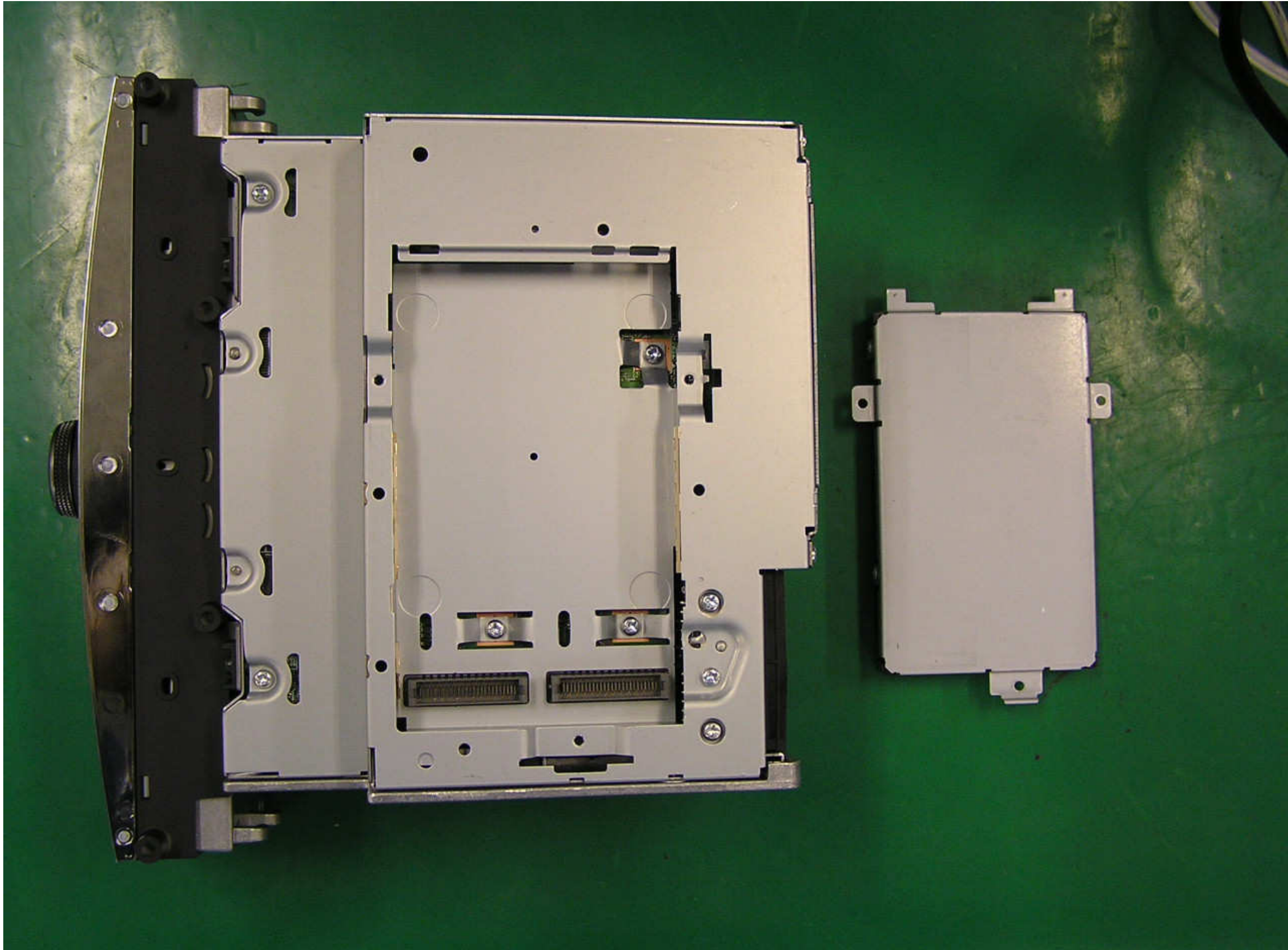
4. REAR SIDE VIEW



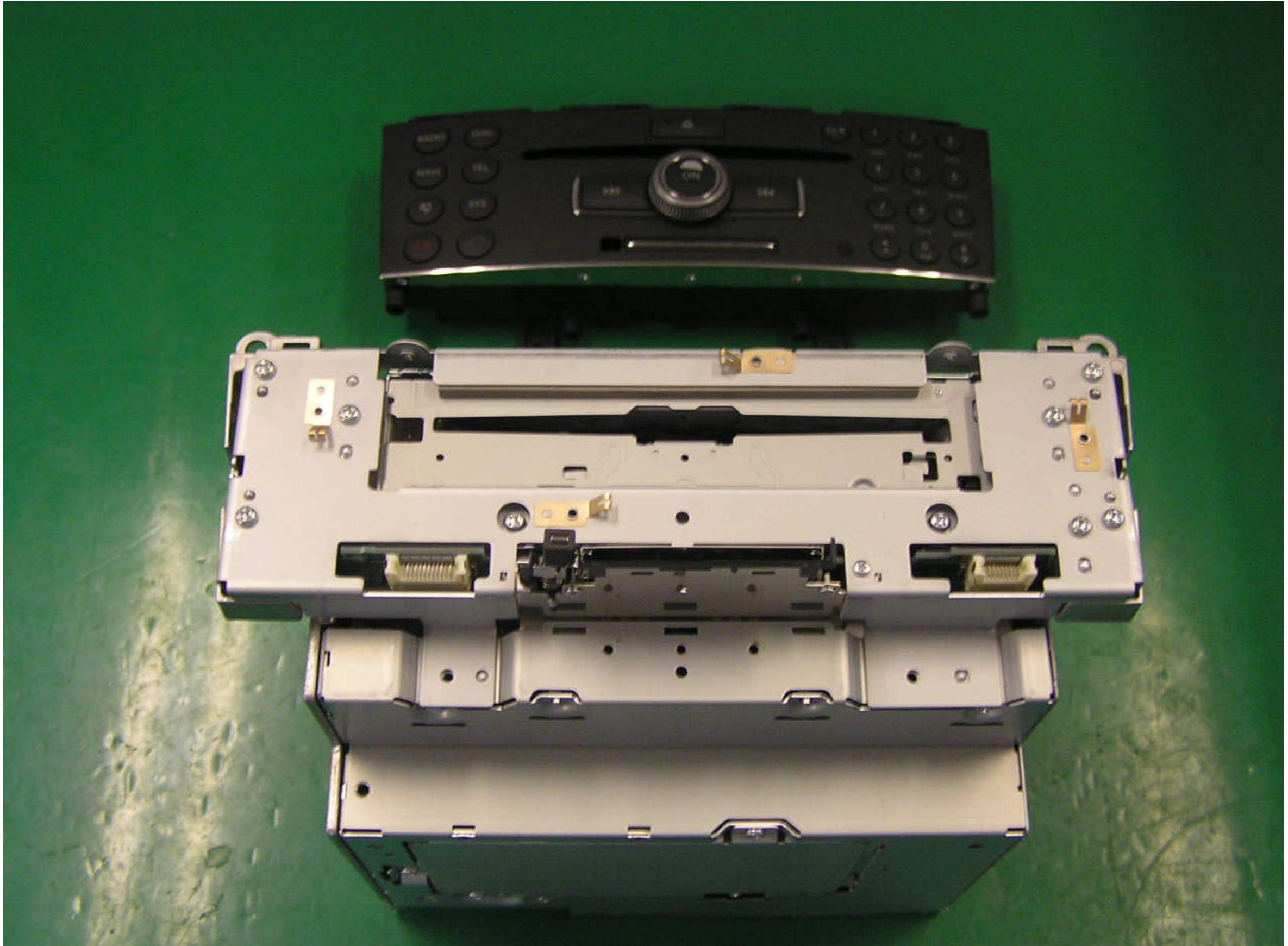
5. LEFT SIDE VIEW



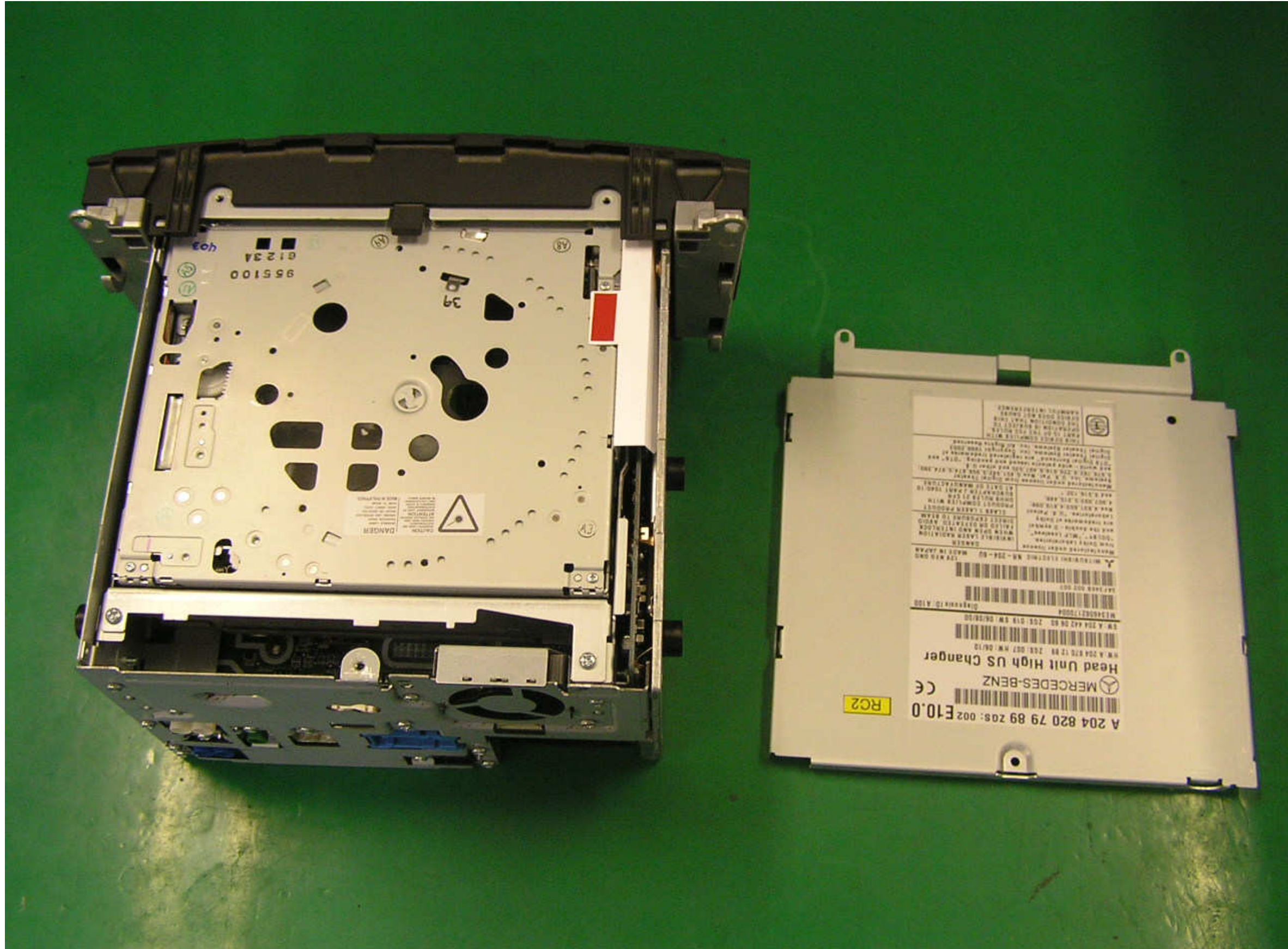
6. BOTTOM SIDE VIEW



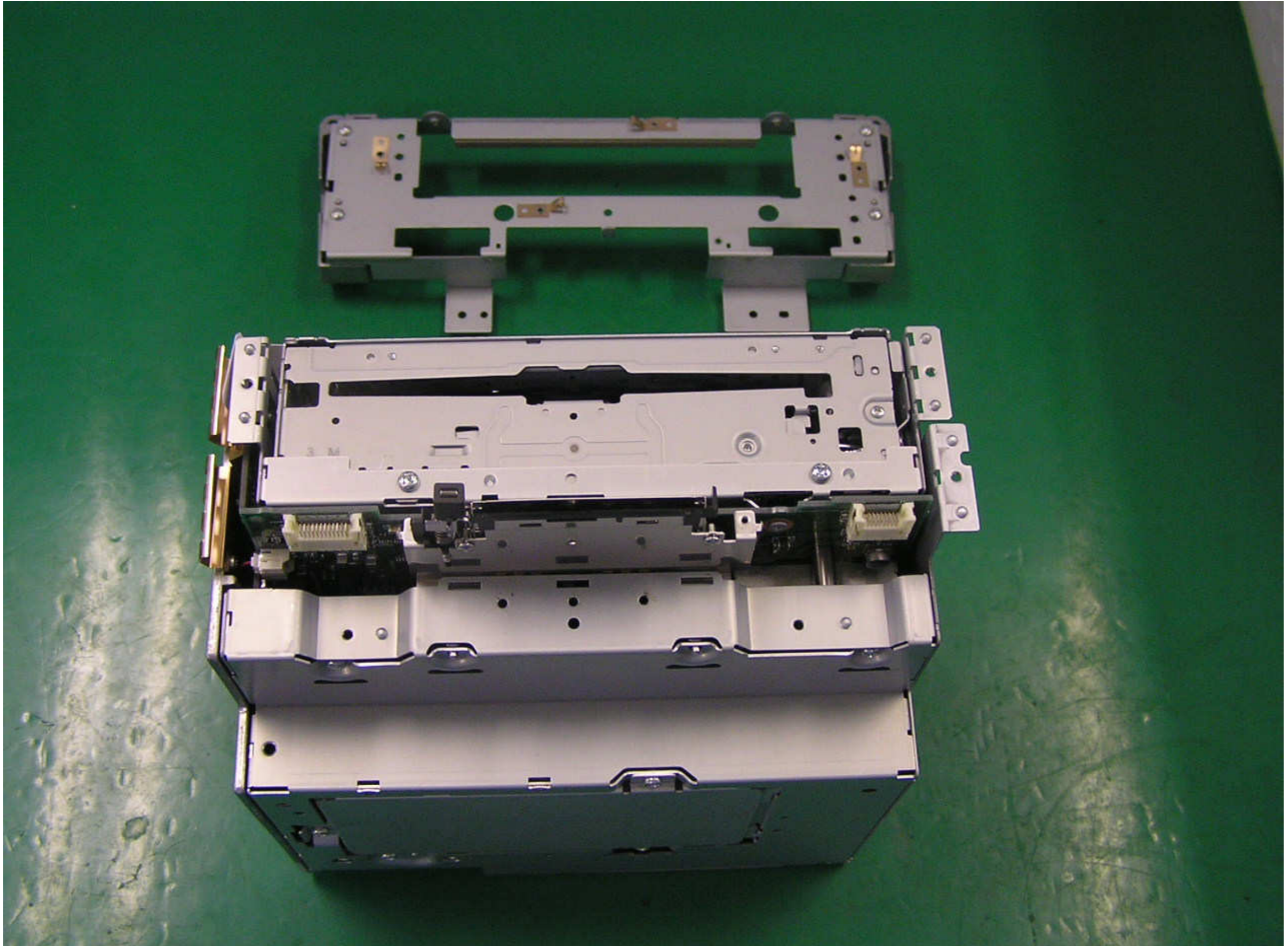
7. Remove HDD Unit



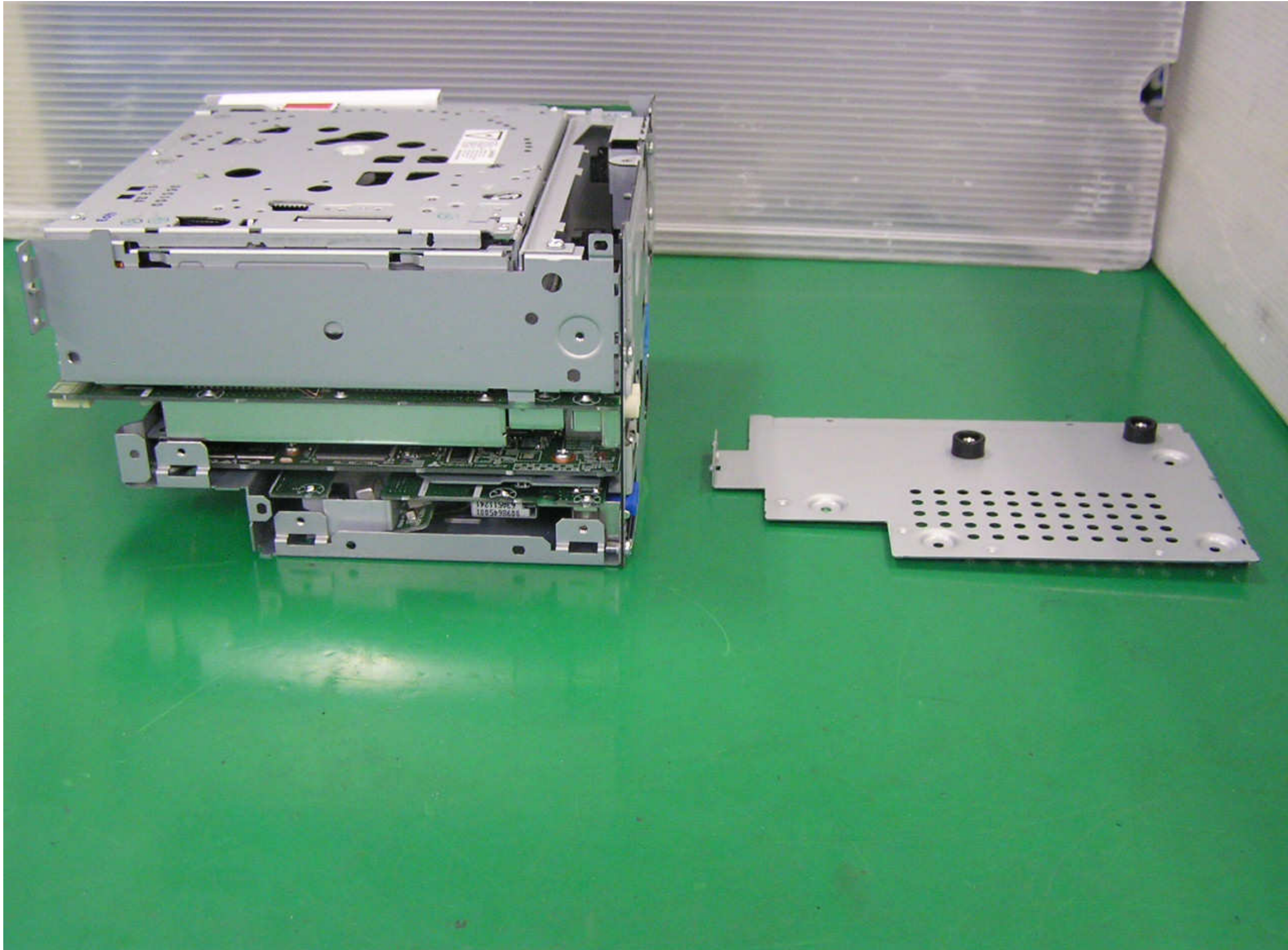
8. Remove Switch Panel Unit



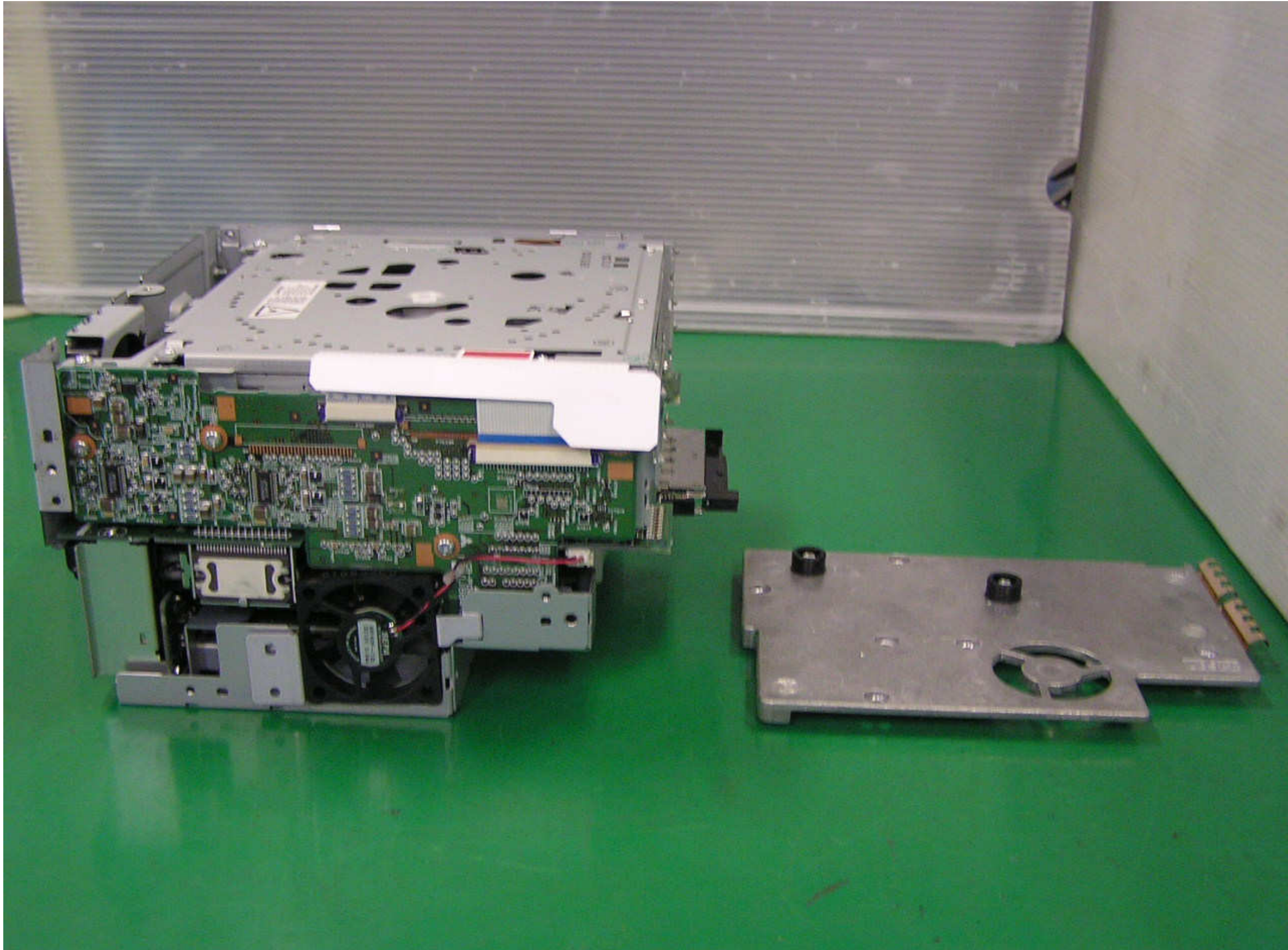
9. Remove Top Cover



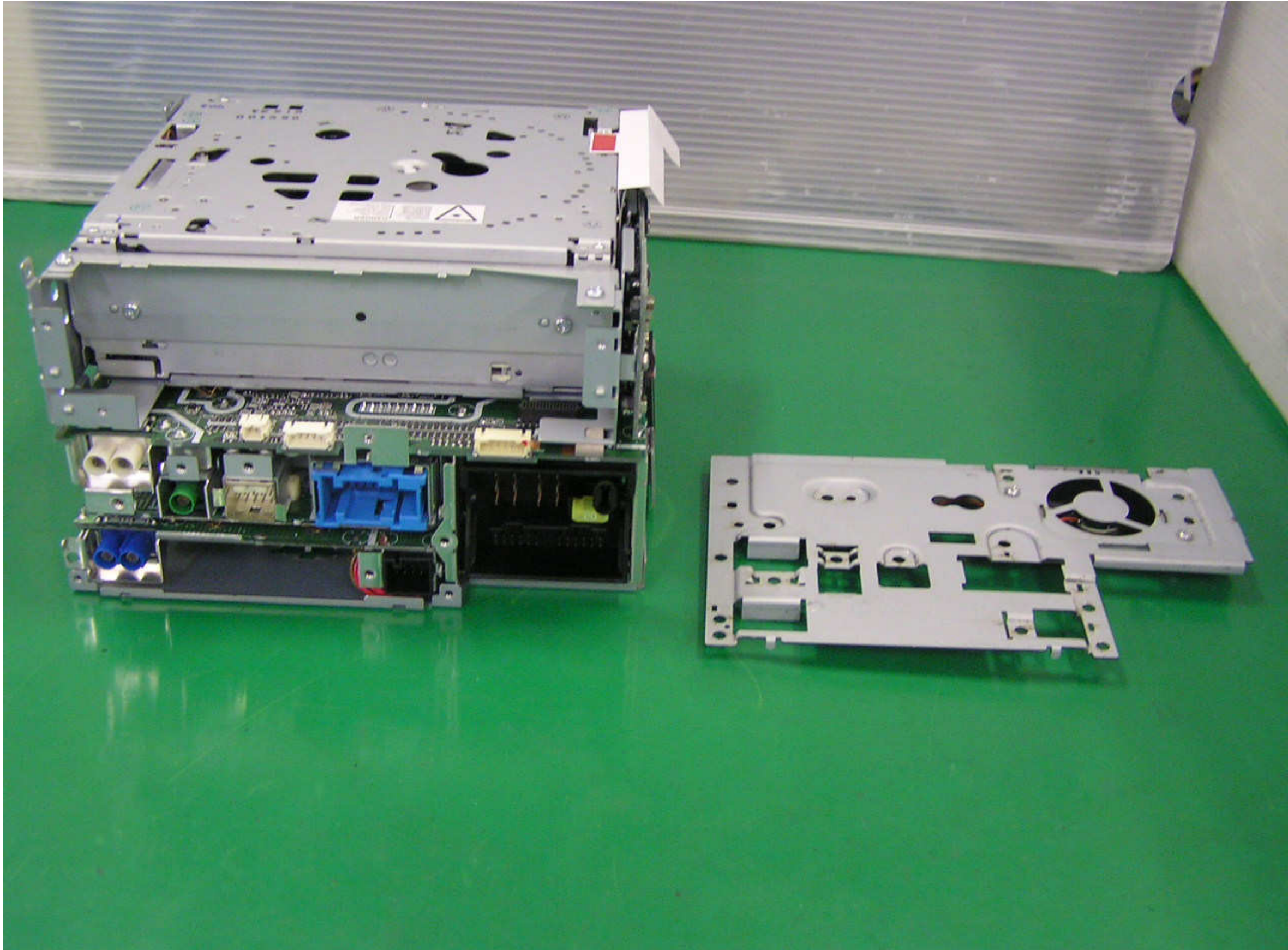
10. Remove Front Metal Plate



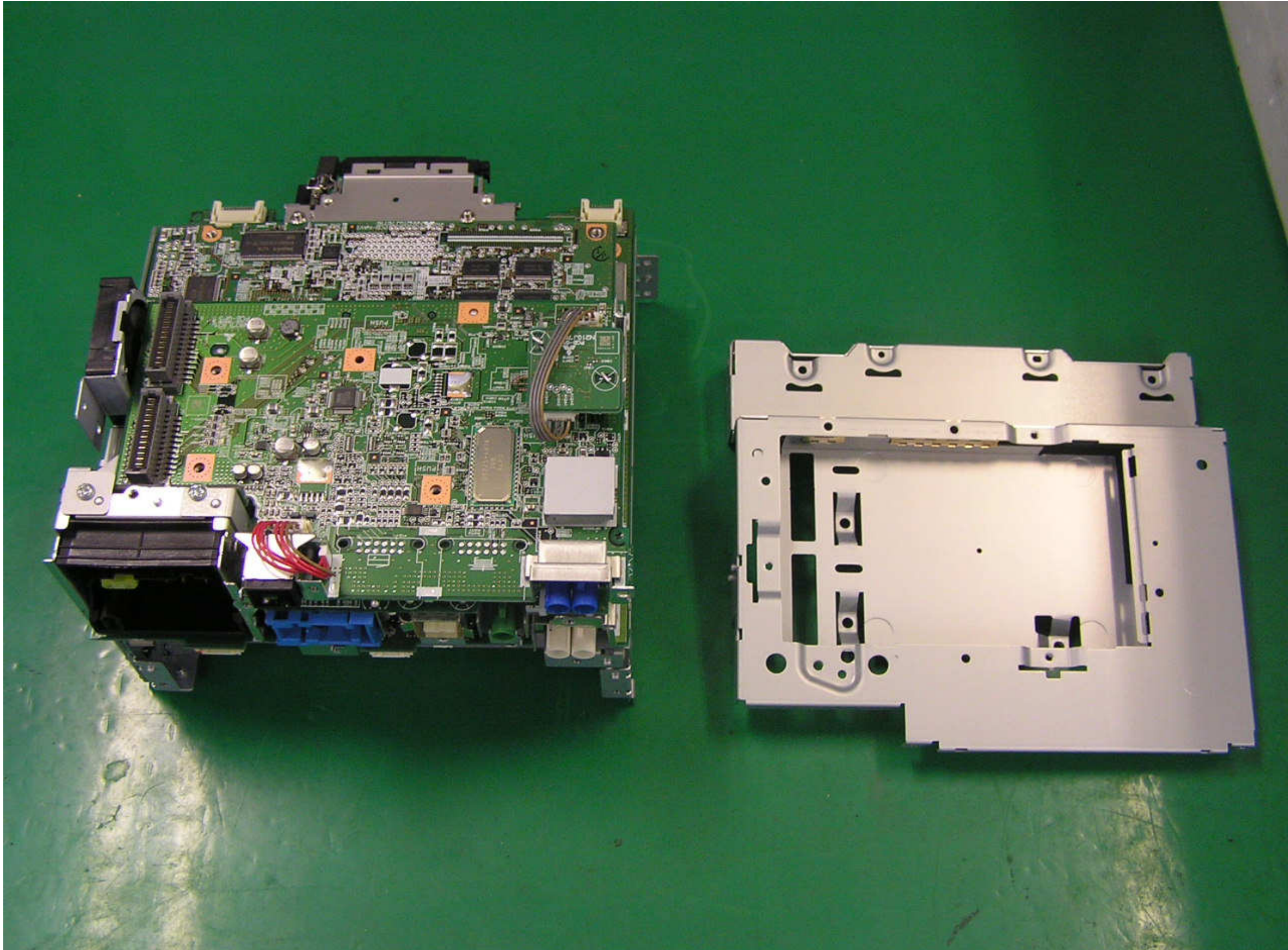
11. Remove Left Metal Plate



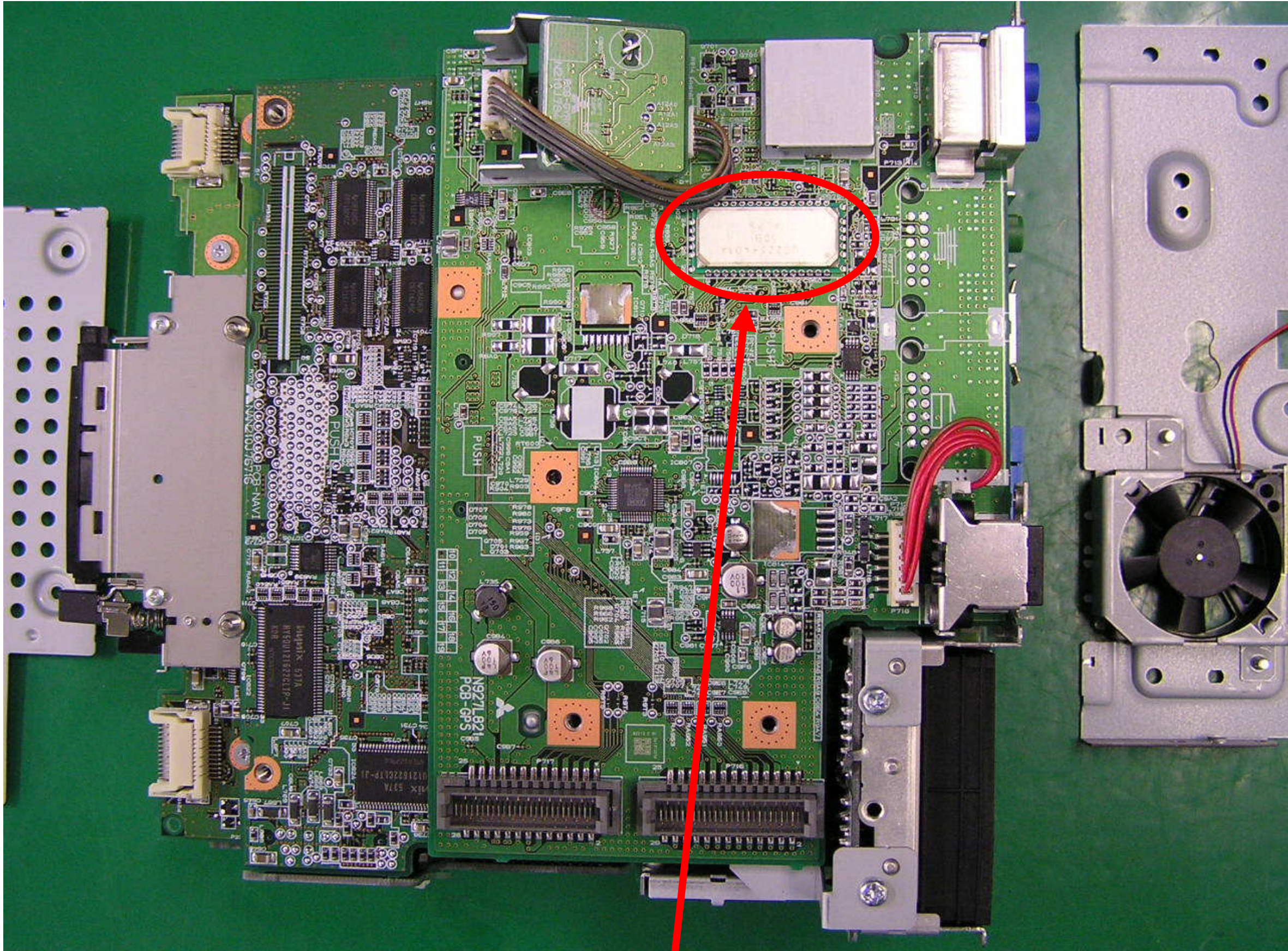
12. Remove Right Metal Plate



13. Remove Rear Metal Plate



14. Remove Bottom Metal Plate



15. PCB-GPS visible (Bluetooth Module mounting)