

NR-172 Photo



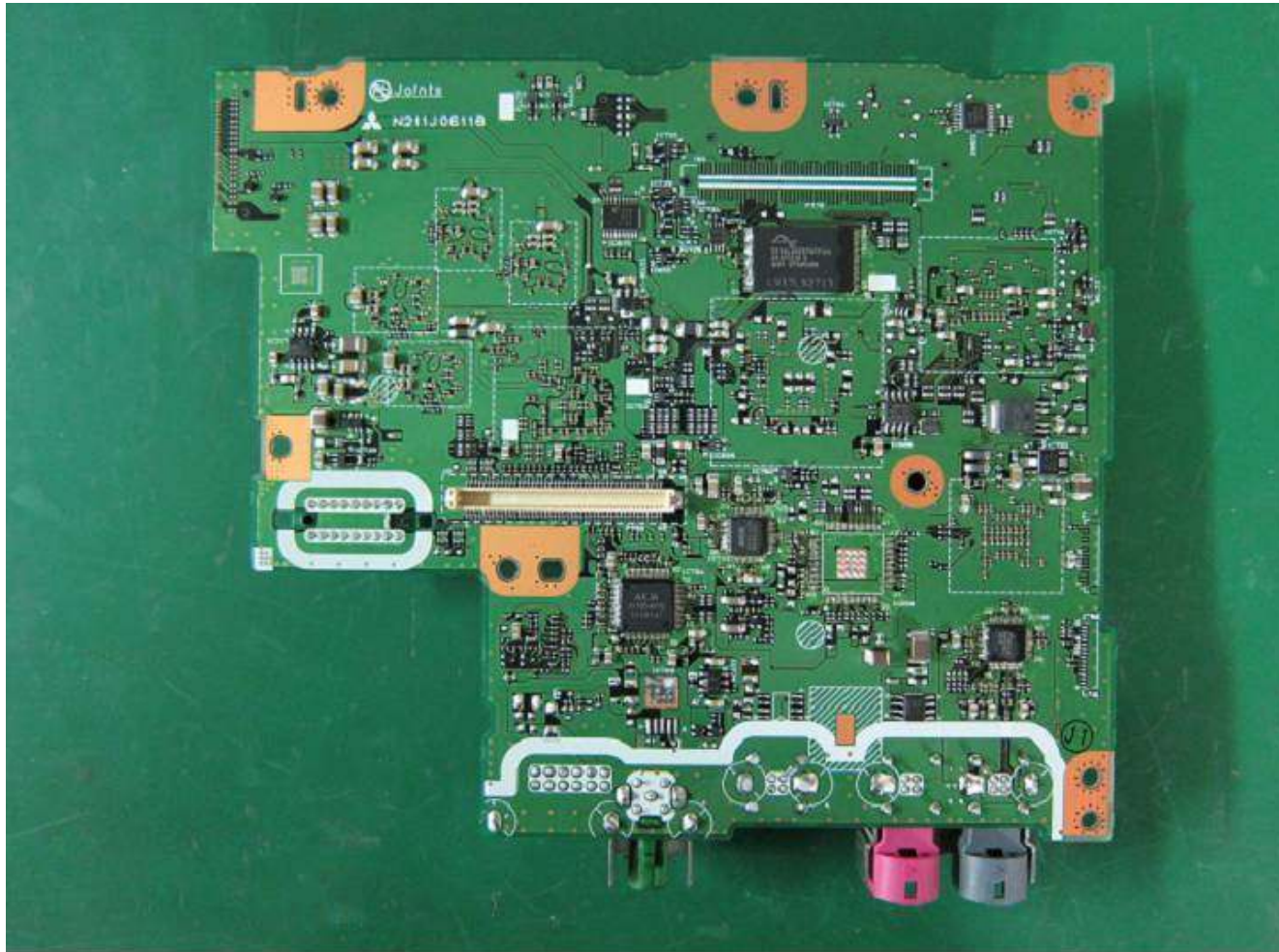
1. Front View

NR-172 Photo



1. PCB-NAVI-A C-side

NR-172 Photo



2. PCB-NAVI-A S-side



NR-172 Photo



3. PCB-MAIN C-side

NR-172 Photo



4. PCB-MAIN S-side



NR-172 Photo



5. PCB-COMBI (PCB-NAVI-B) C-side

Copyright(c) Mitsubishi Electric Corporation

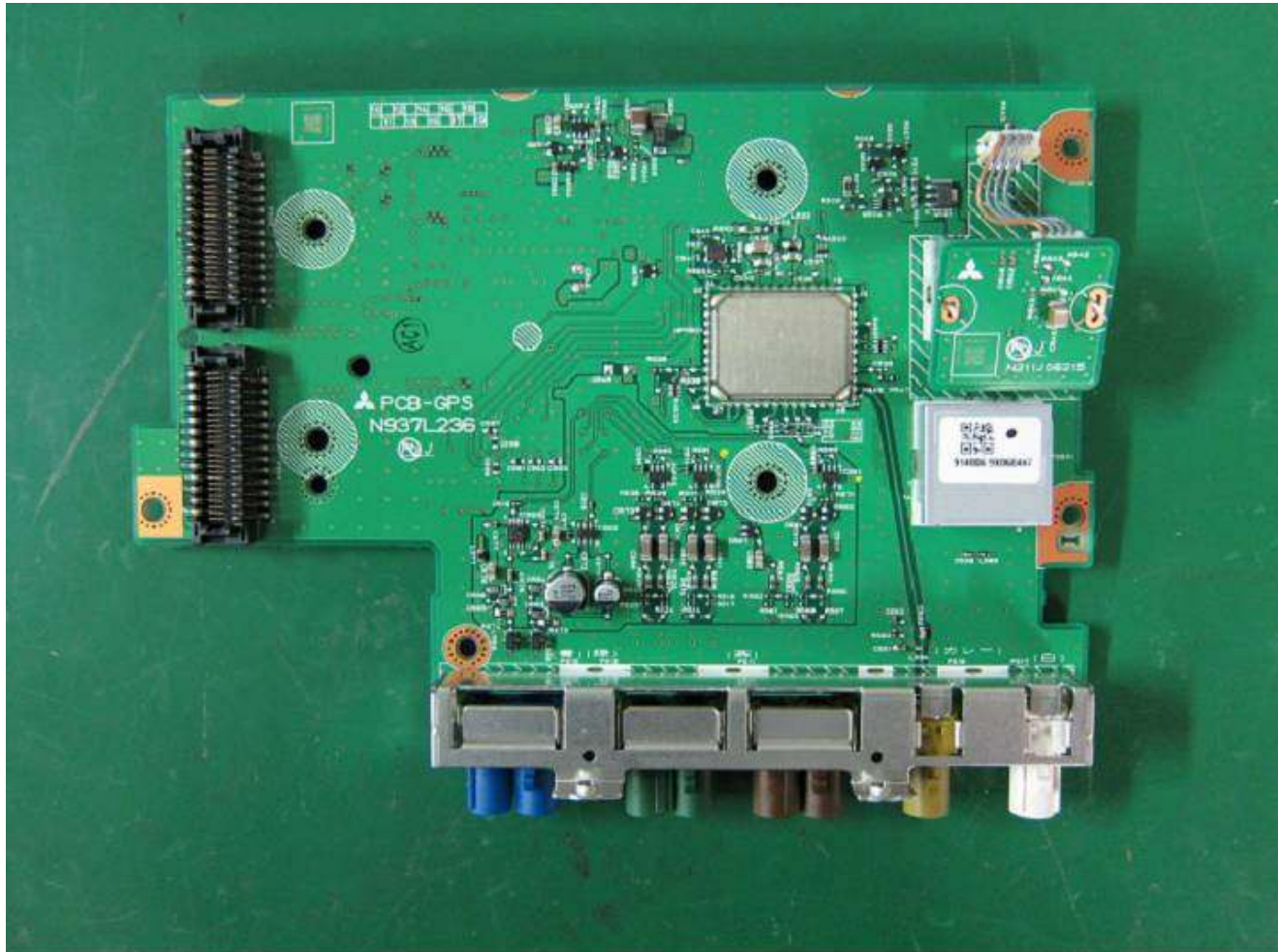
NR-172 Photo



6. PCB-COMBI (PCB-NAVI-B) S-side

Copyright(c) Mitsubishi Electric Corporation

NR-172 Photo

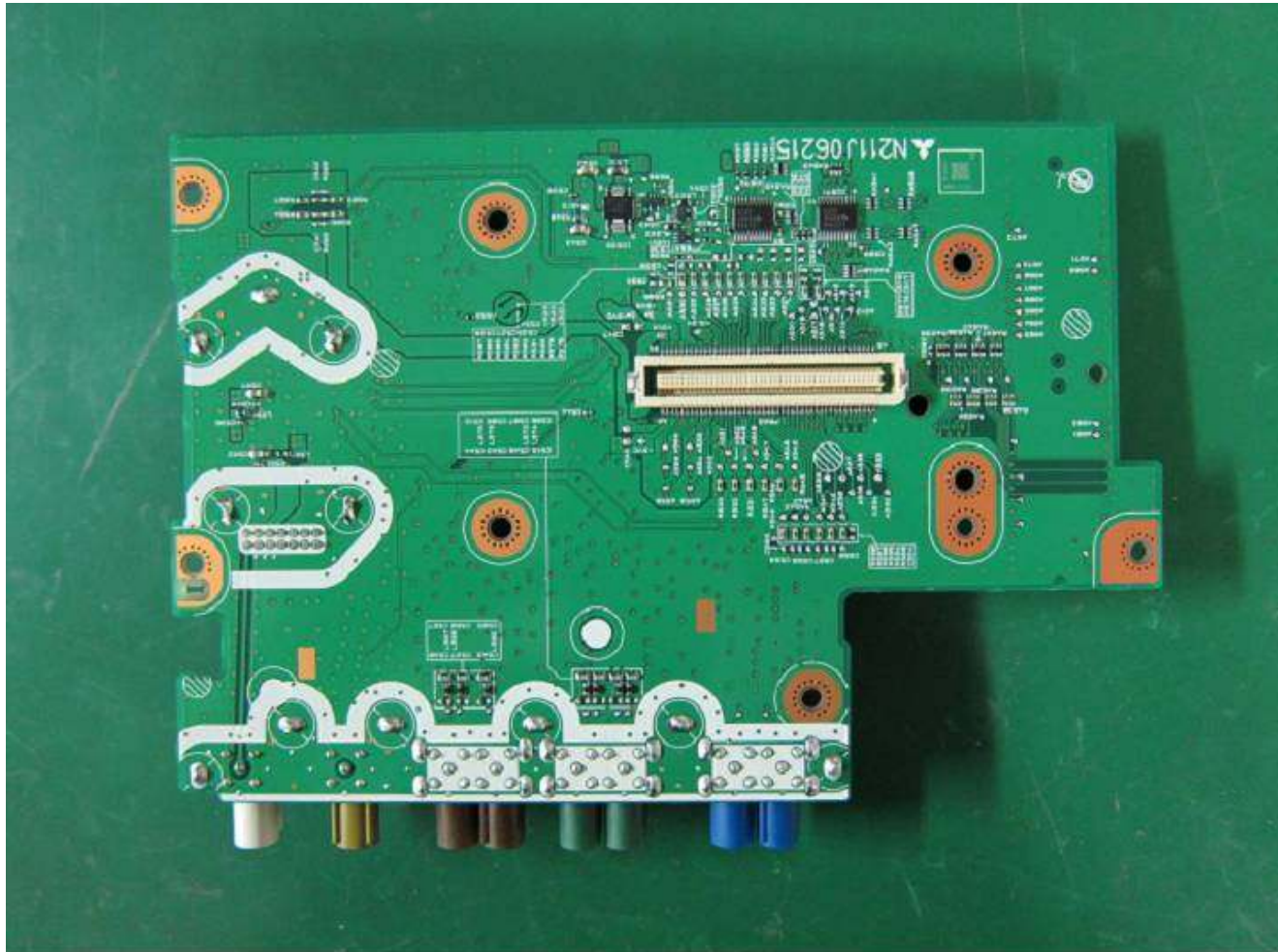


7. PCB-GPS (PCB-NAVI-B) C-side

Copyright(c) Mitsubishi Electric Corporation

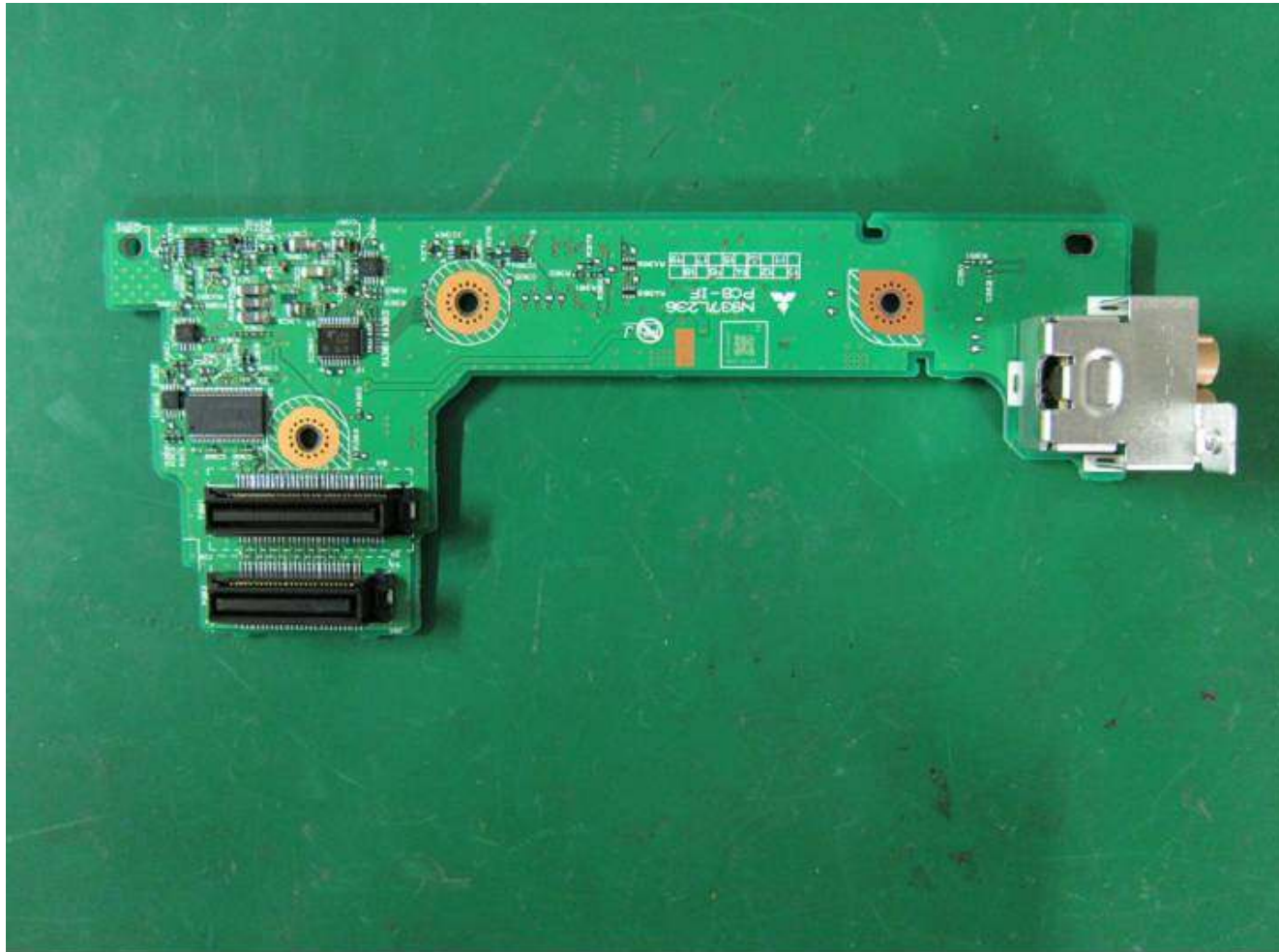


NR-172 Photo



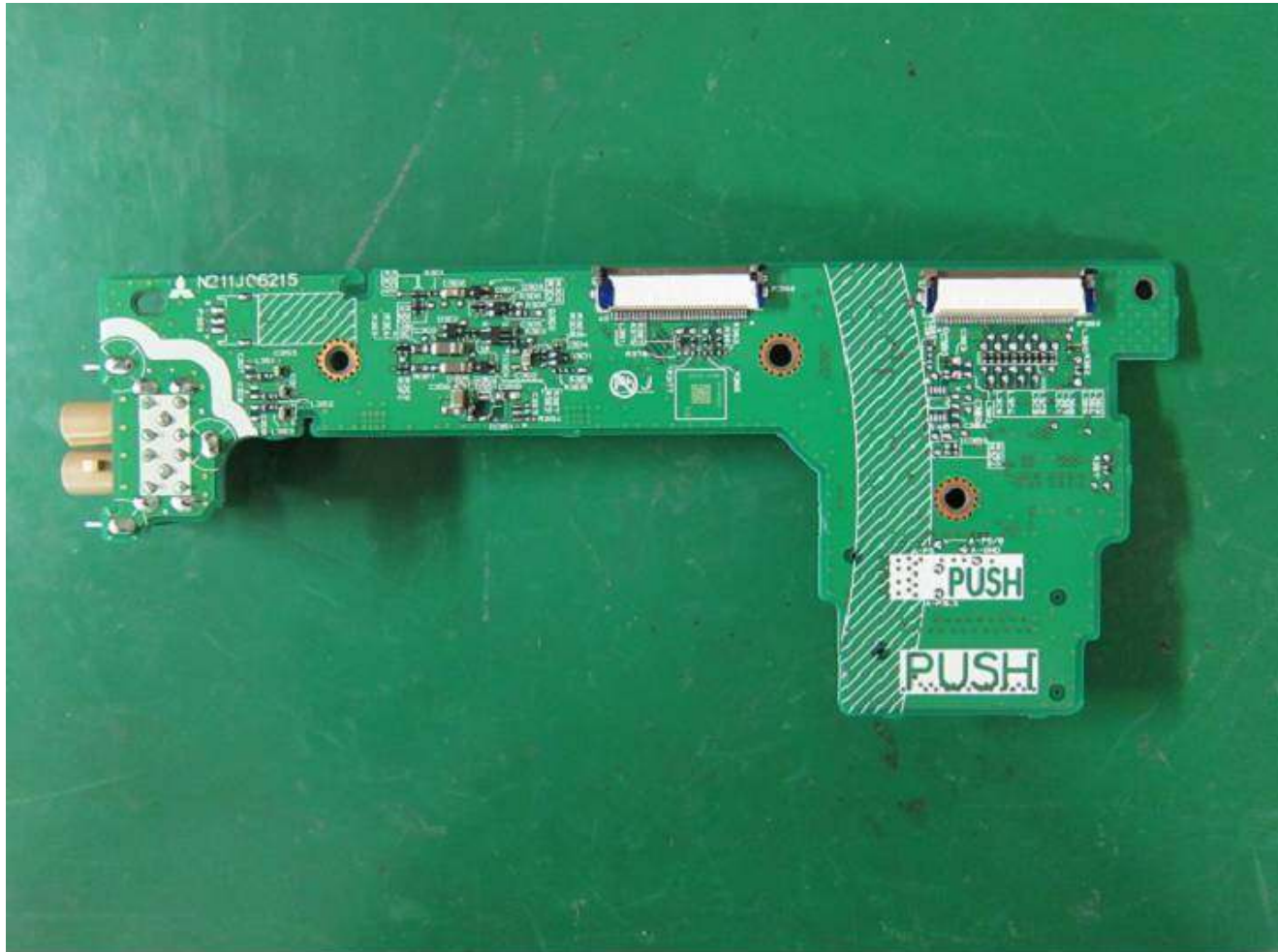
8. PCB-GPS (PCB-NAVI-B) S-side

NR-172 Photo



9. PCB-IF (PCB-NAVI-B) C-side

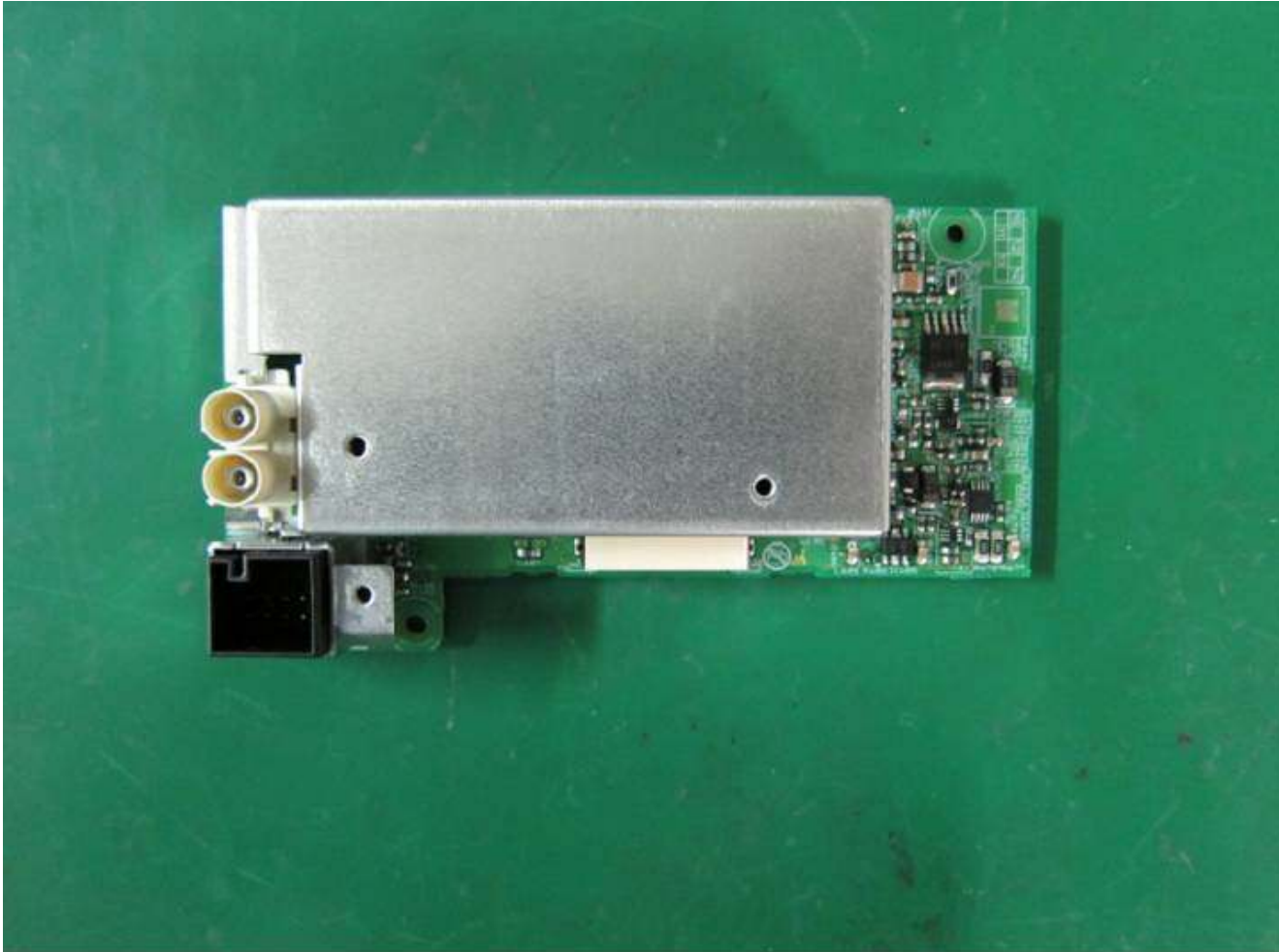
NR-172 Photo



10. PCB-IF (PCB-NAVI-B) S-side



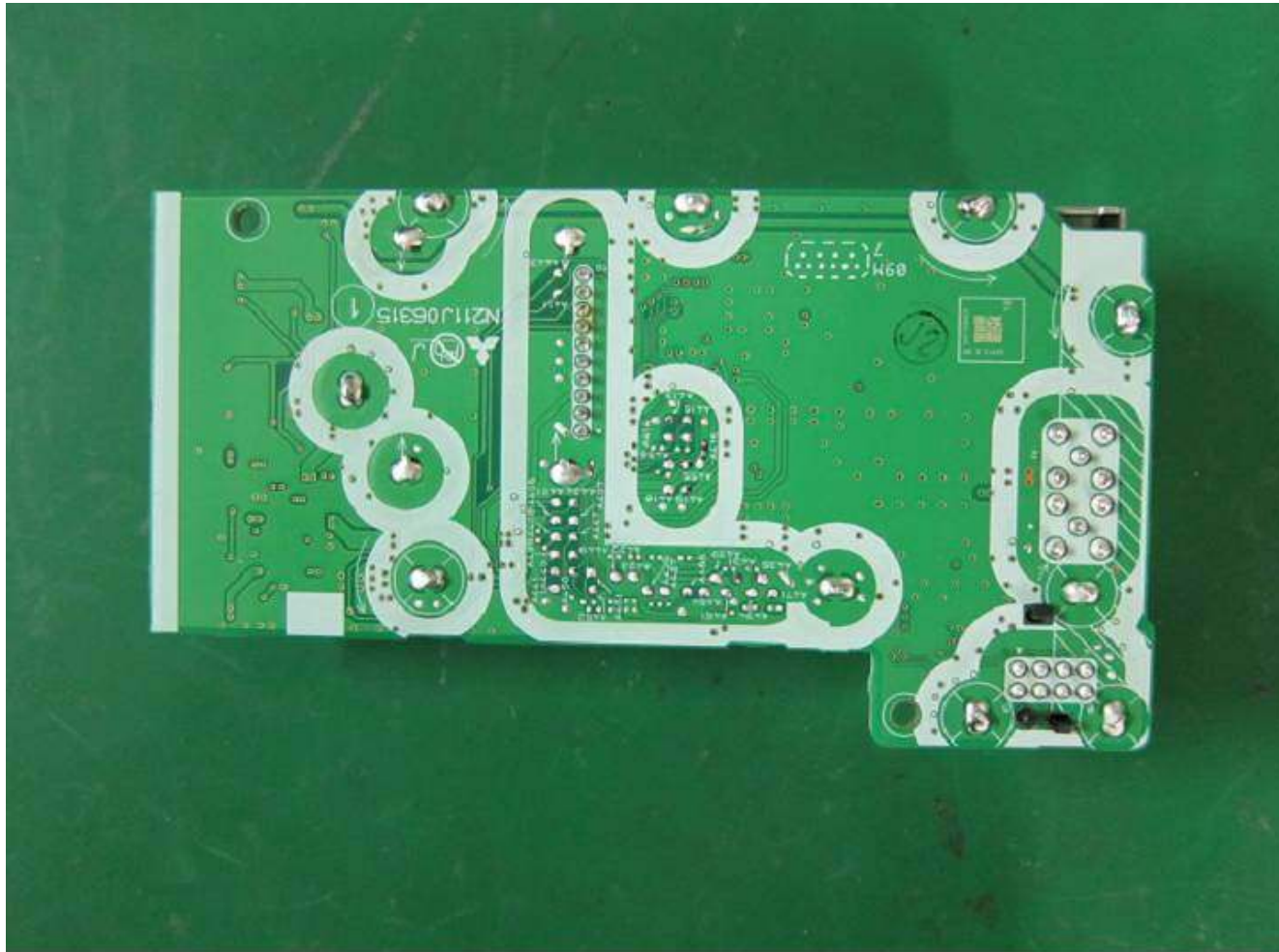
NR-172 Photo



11. PCB-TUNER C-side

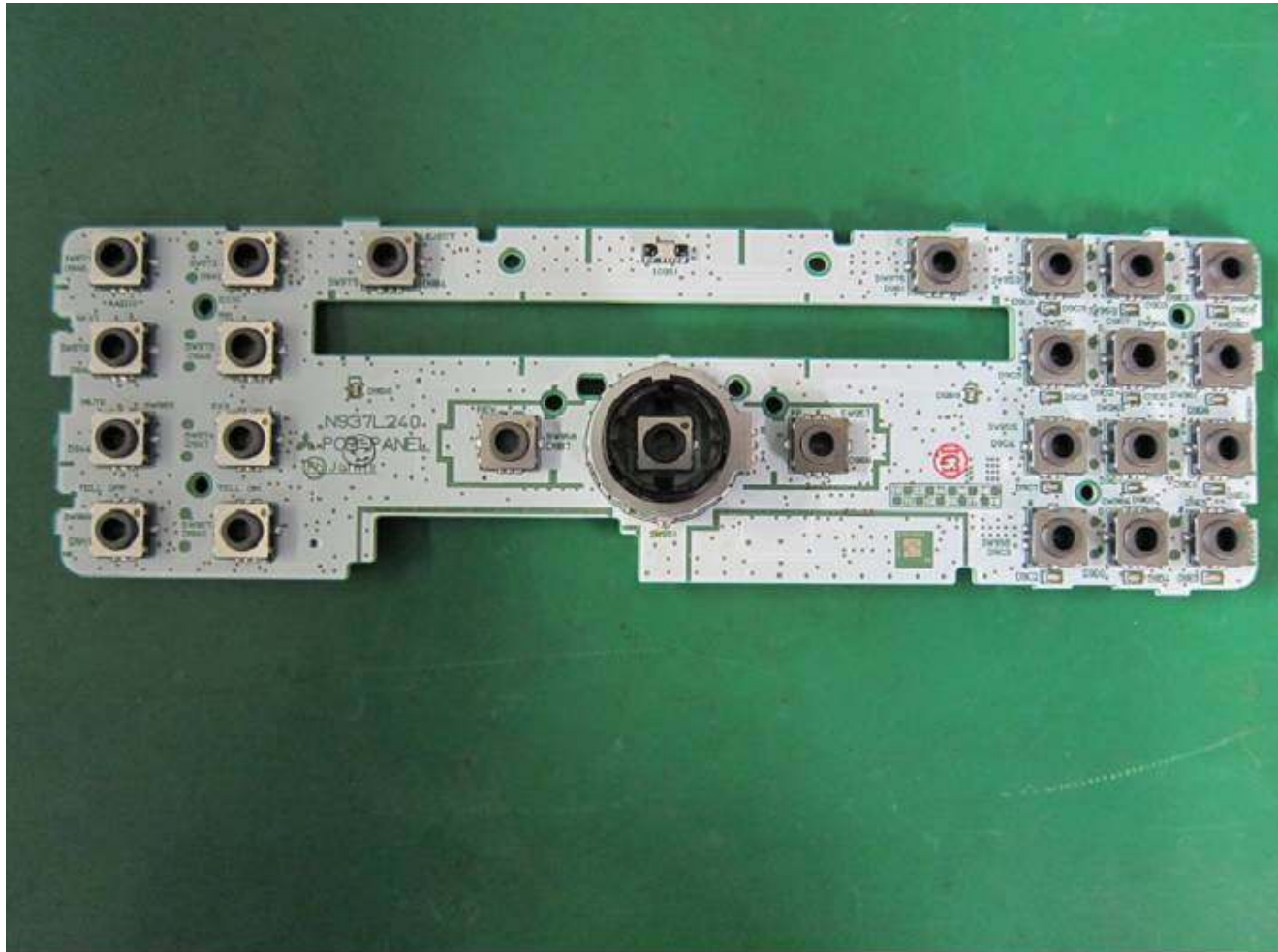
Copyright(c) Mitsubishi Electric Corporation

NR-172 Photo



12. PCB-TUNER S-side

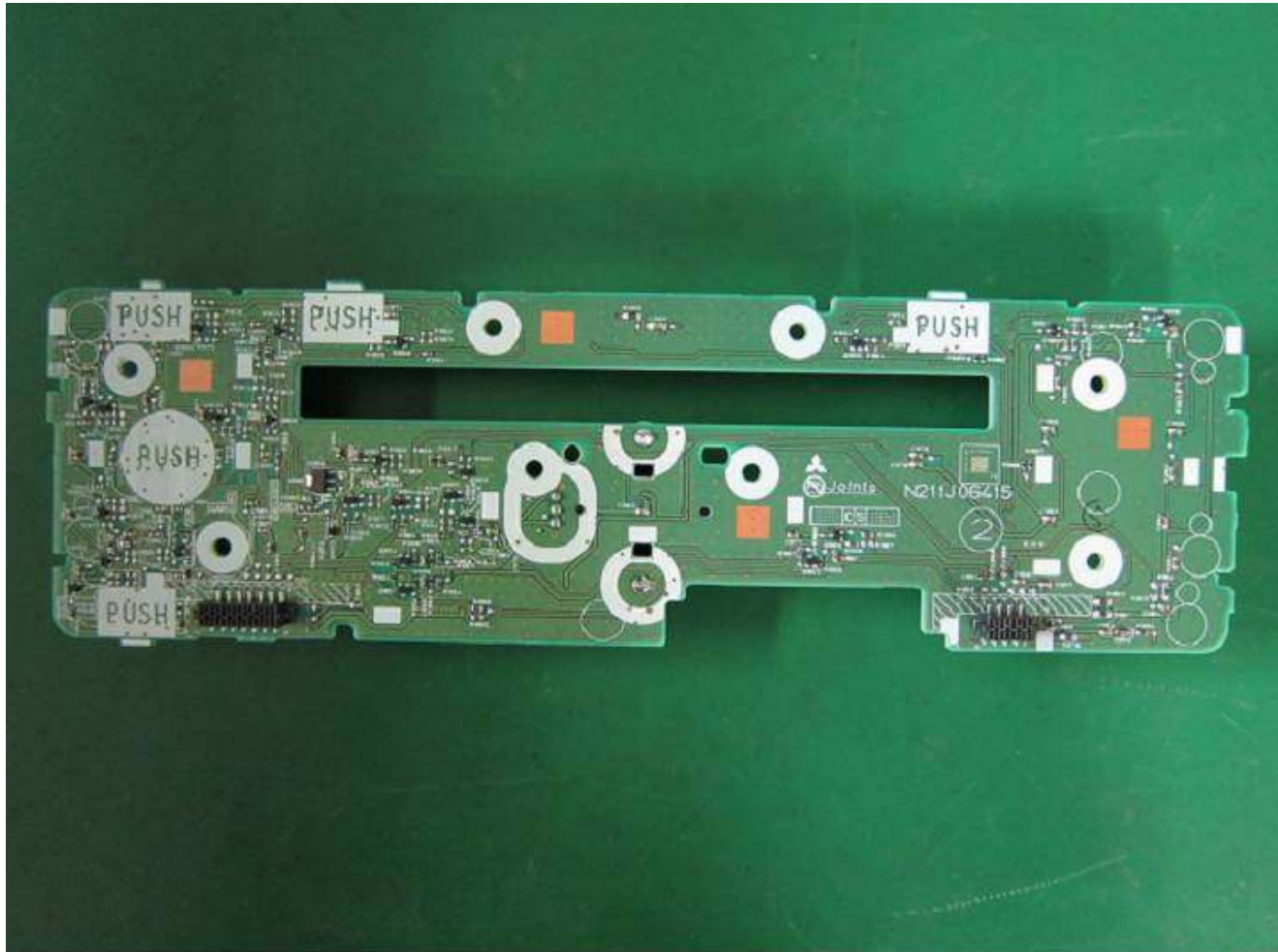
NR-172 Photo



13. PCB-PANEL C-side



NR-172 Photo



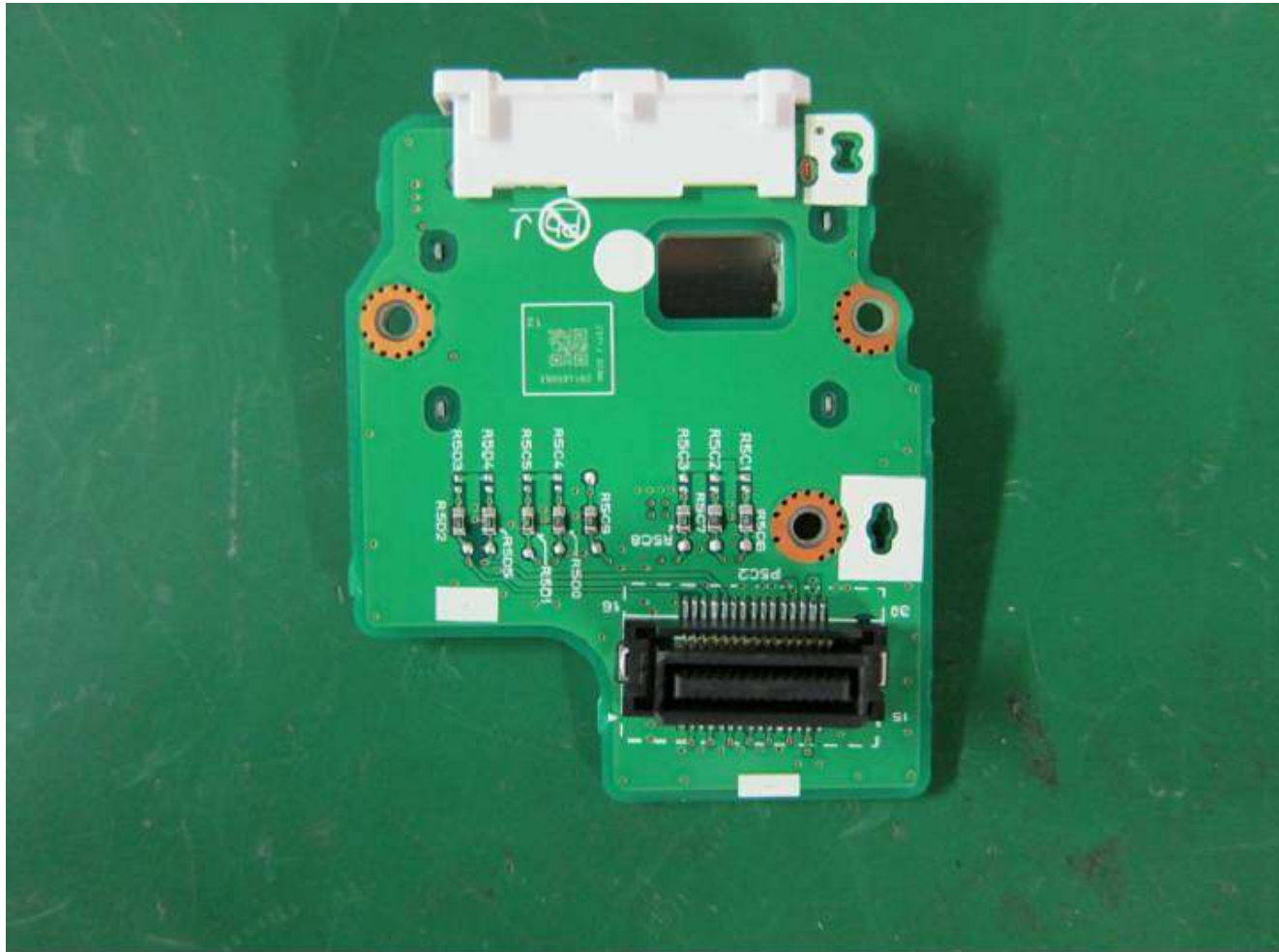
14. PCB-PANEL S-side

NR-172 Photo



15. PCB-SD (PCB-NAVI-B) C-side

NR-172 Photo



16. PCB-SD (PCB-NAVI-B) S-side



NR-172 Photo



17. PCB-HDD (PCB-NAVI-B) C-side

NR-172 Photo



18. PCB-HDD (PCB-NAVI-B) S-side

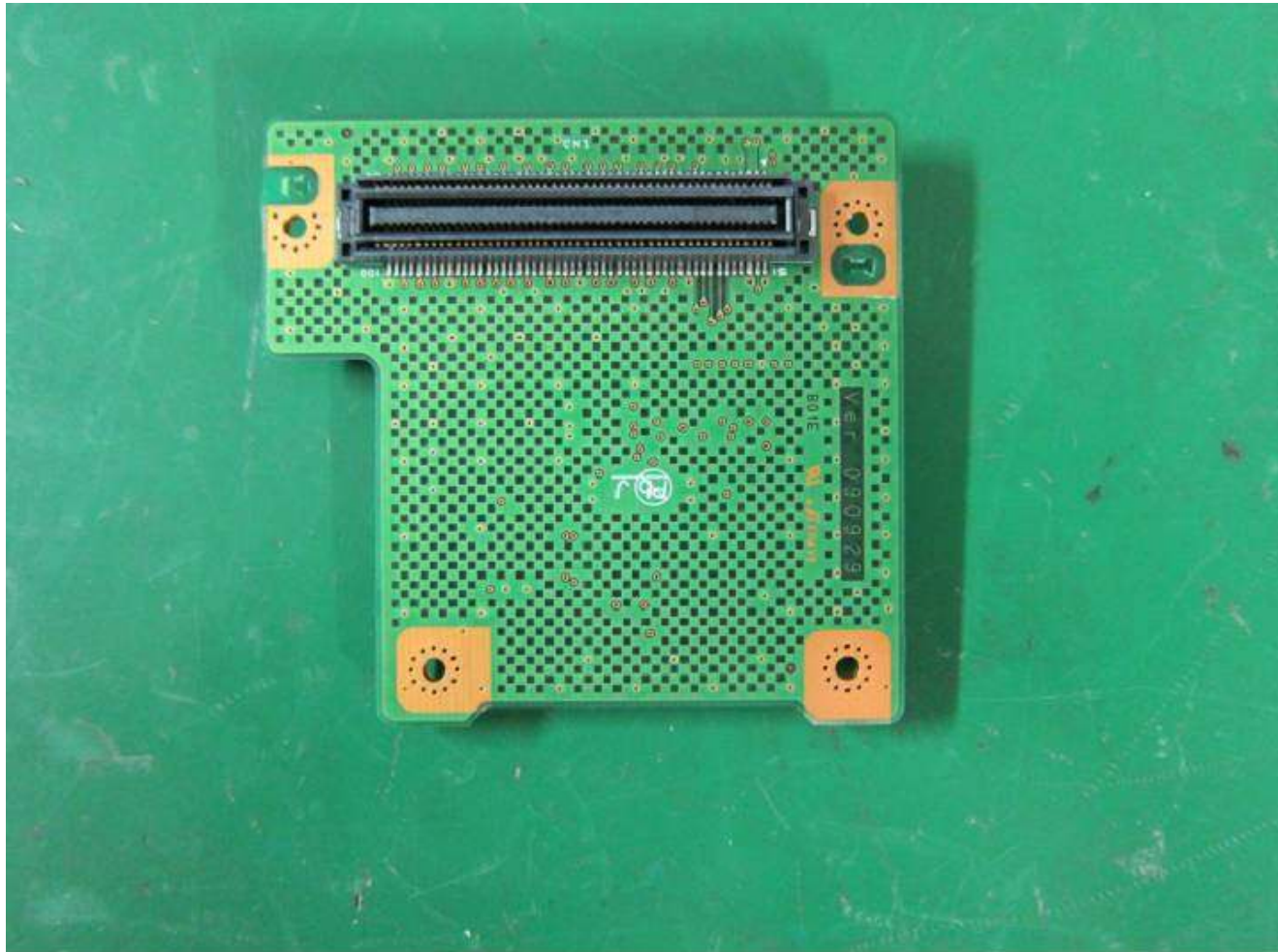
NR-172 Photo



19. eSD-Module C-side

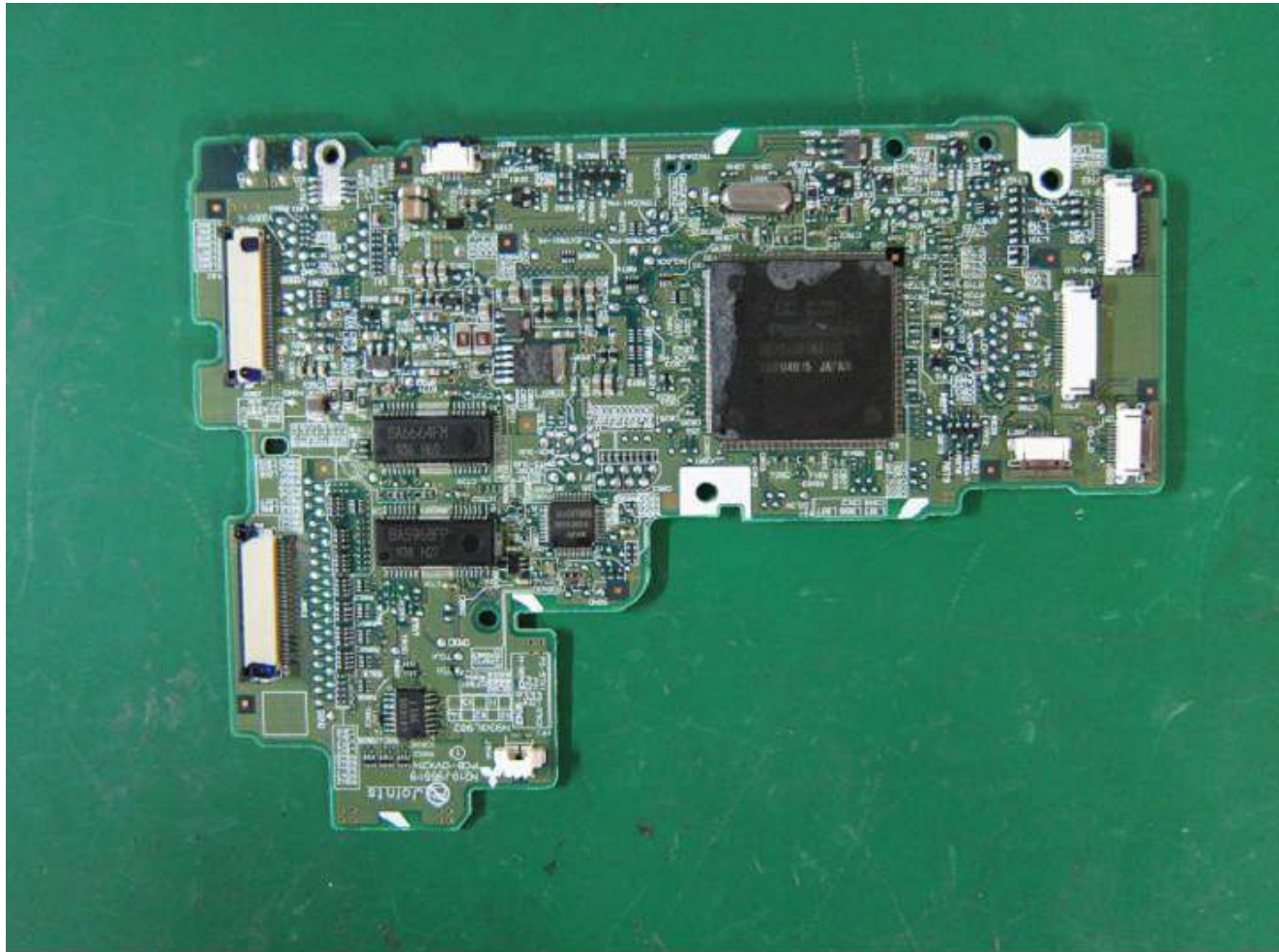


NR-172 Photo



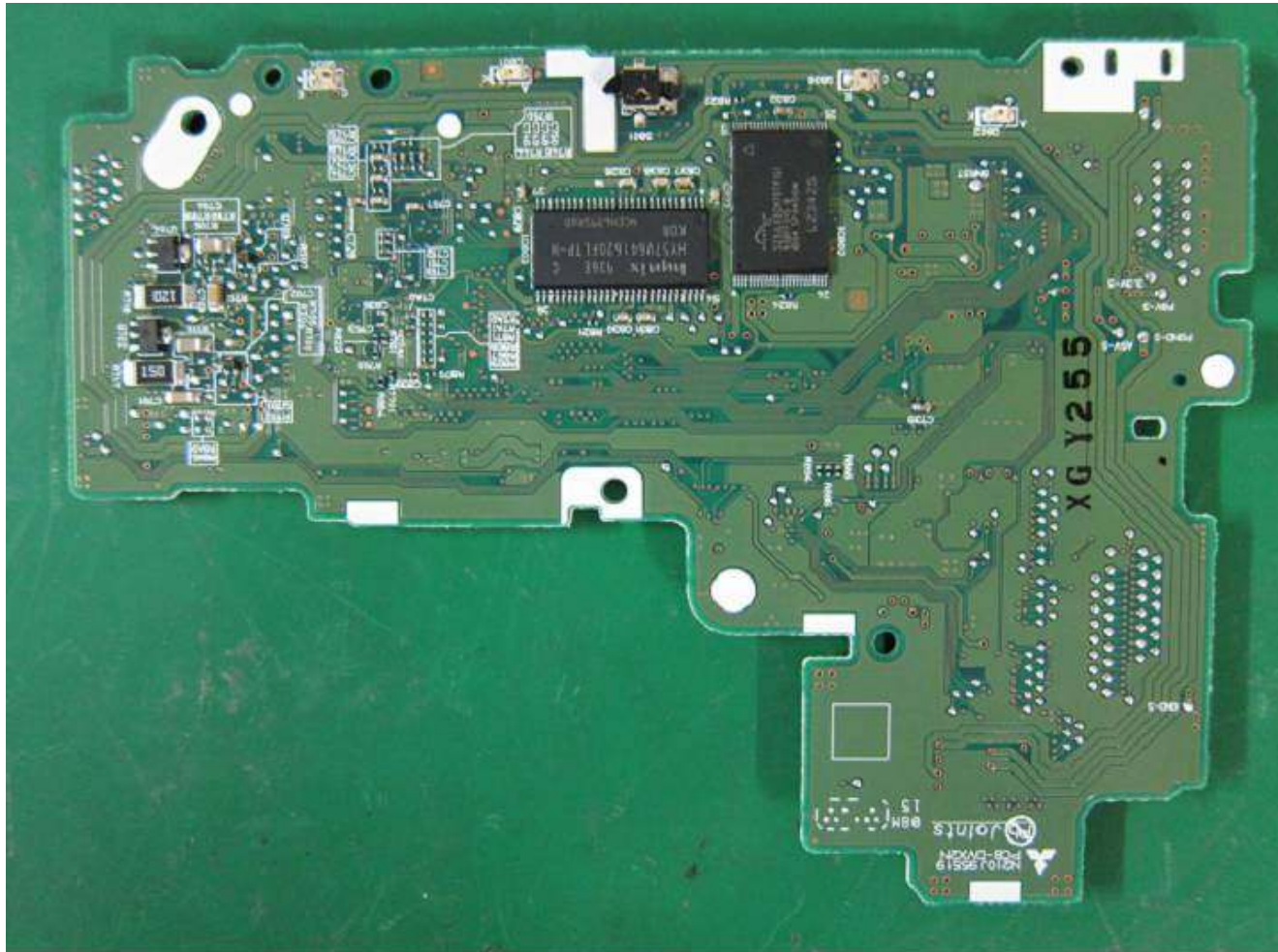
20. eSD-Module S-side

NR-172 Photo



21. PCB ChangerDeck C-side

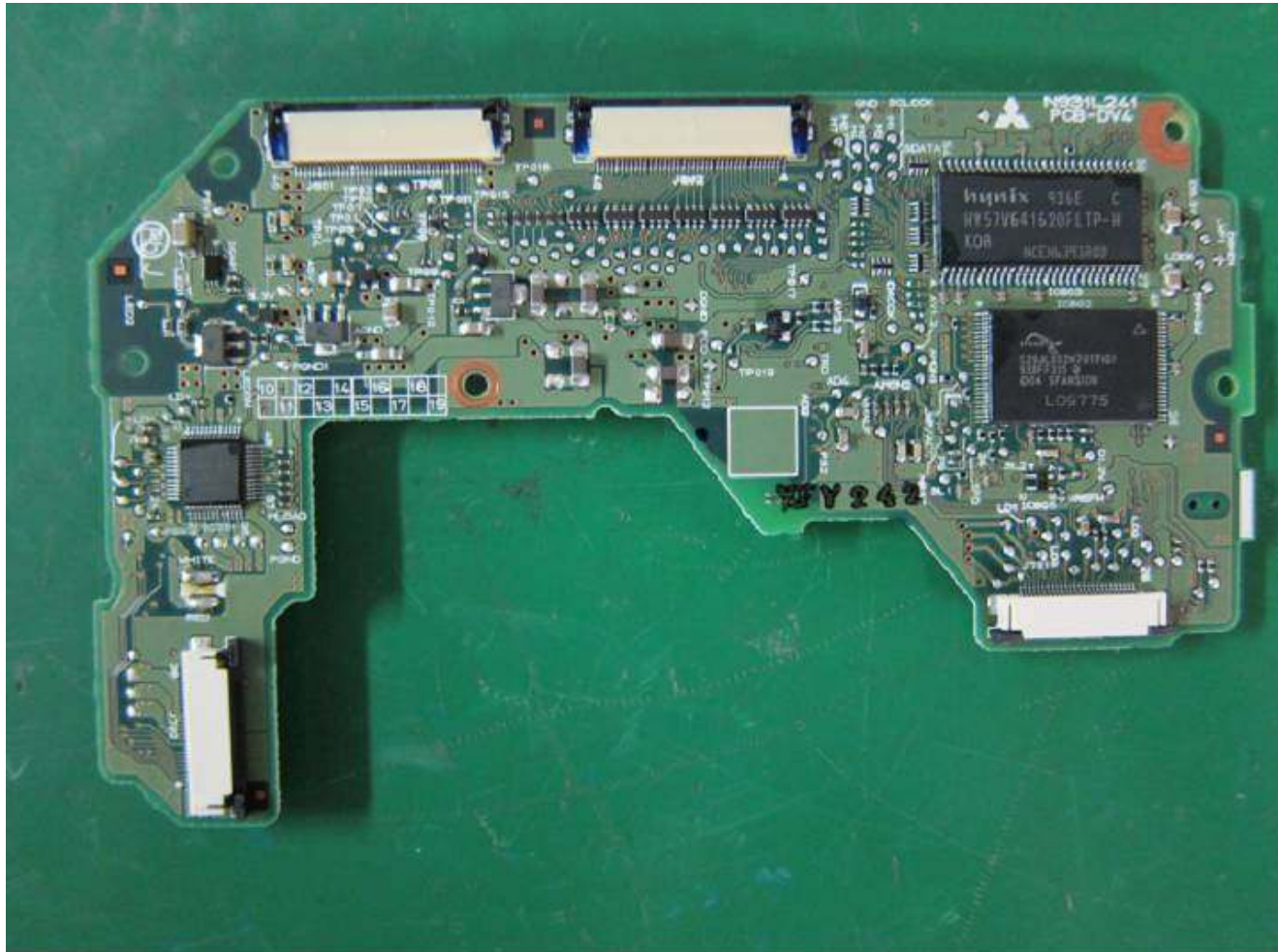
NR-172 Photo



22. PCB ChangerDeck S-side

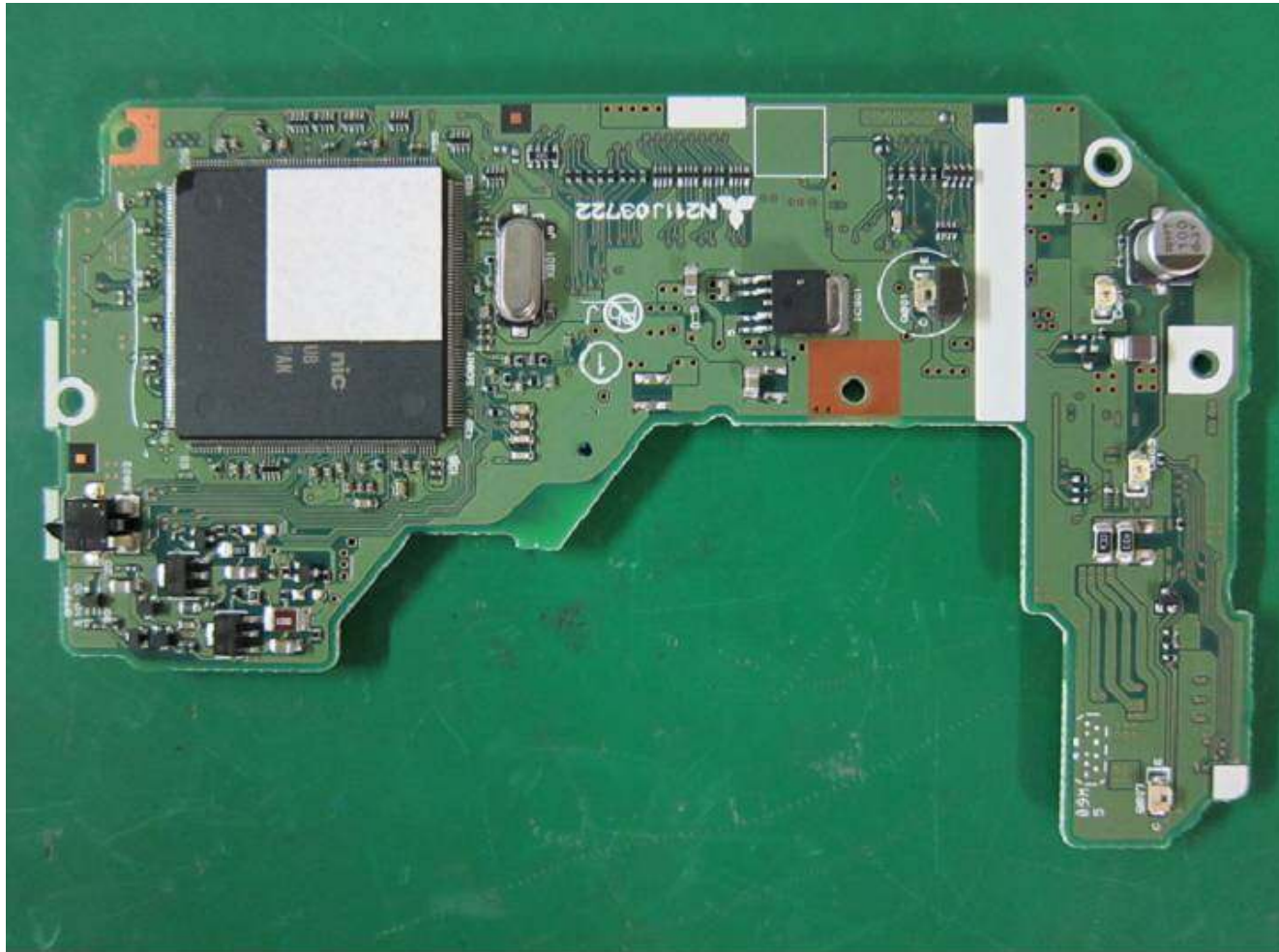


NR-172 Photo



23. PCB SingleDeck C-side

NR-172 Photo



24. PCB SingleDeck S-side

NR-172 Photo



2. Top View

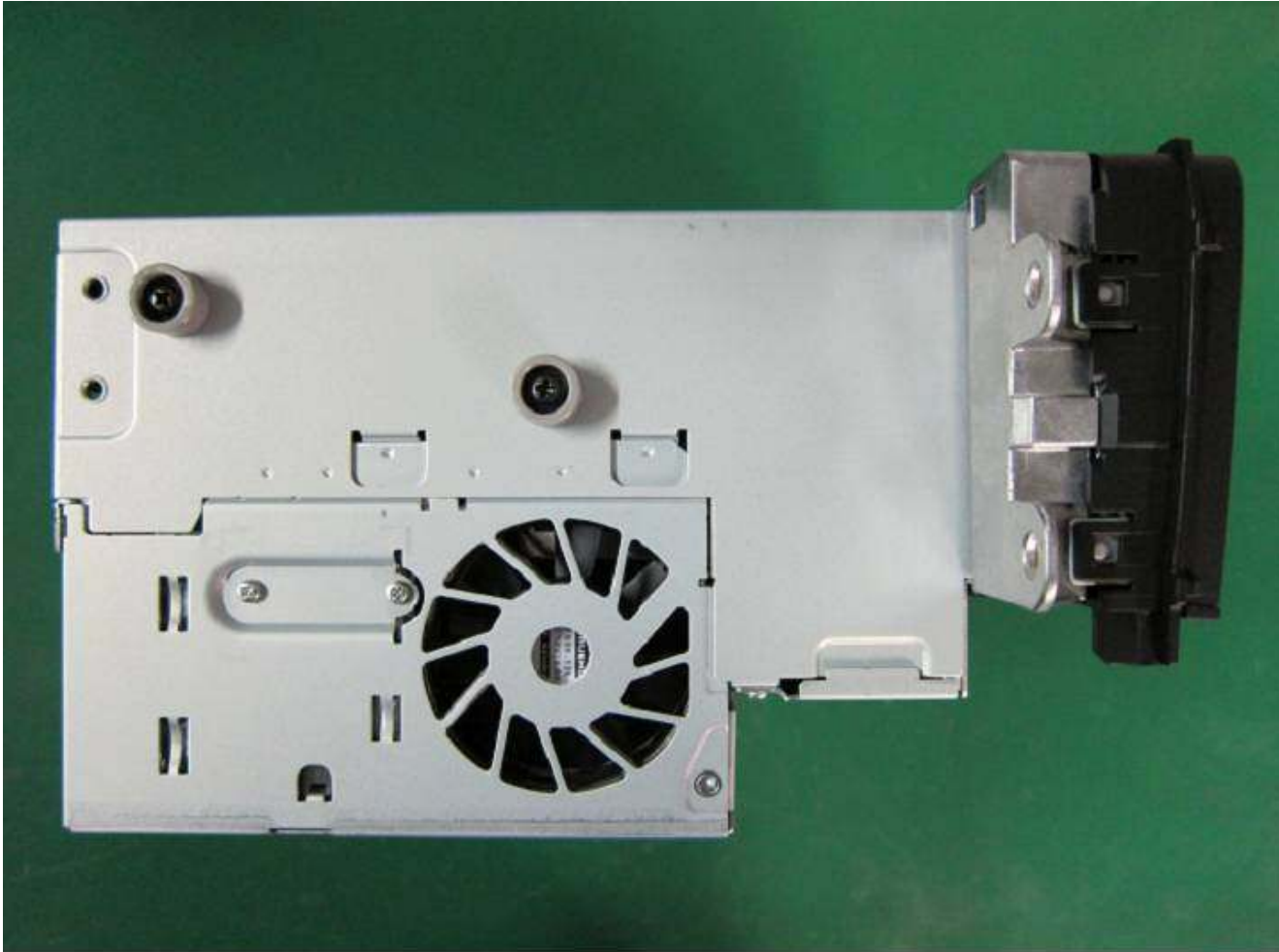


NR-172 Photo



3. Right View

NR-172 Photo



4. Left View

NR-172 Photo



5. Rear View



NR-172 Photo



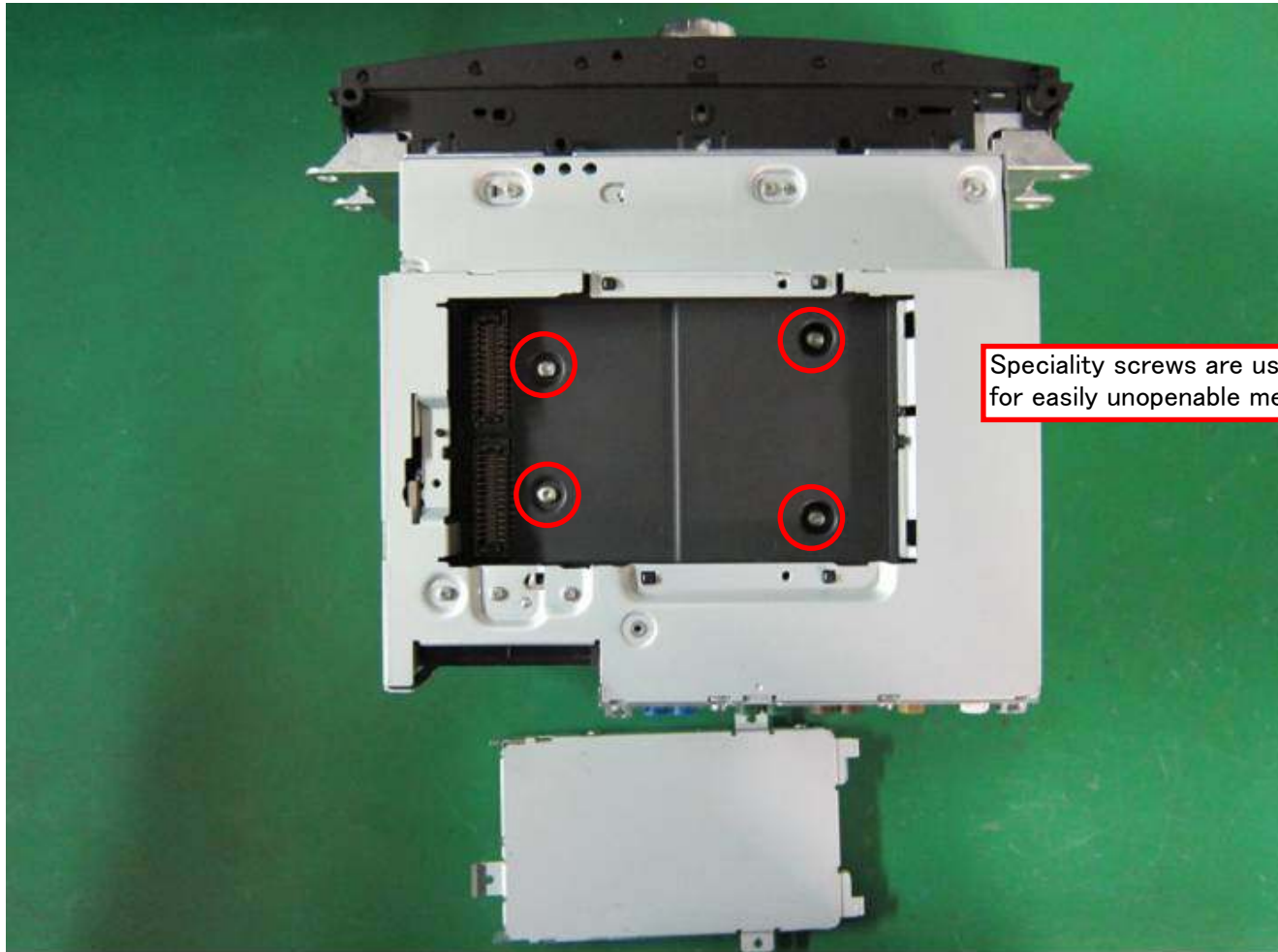
6. Bottom View

NR-172 Photo



7. Front Panel is removed.

NR-172 Photo



Speciality screws are used for easily unopenable mechanism.

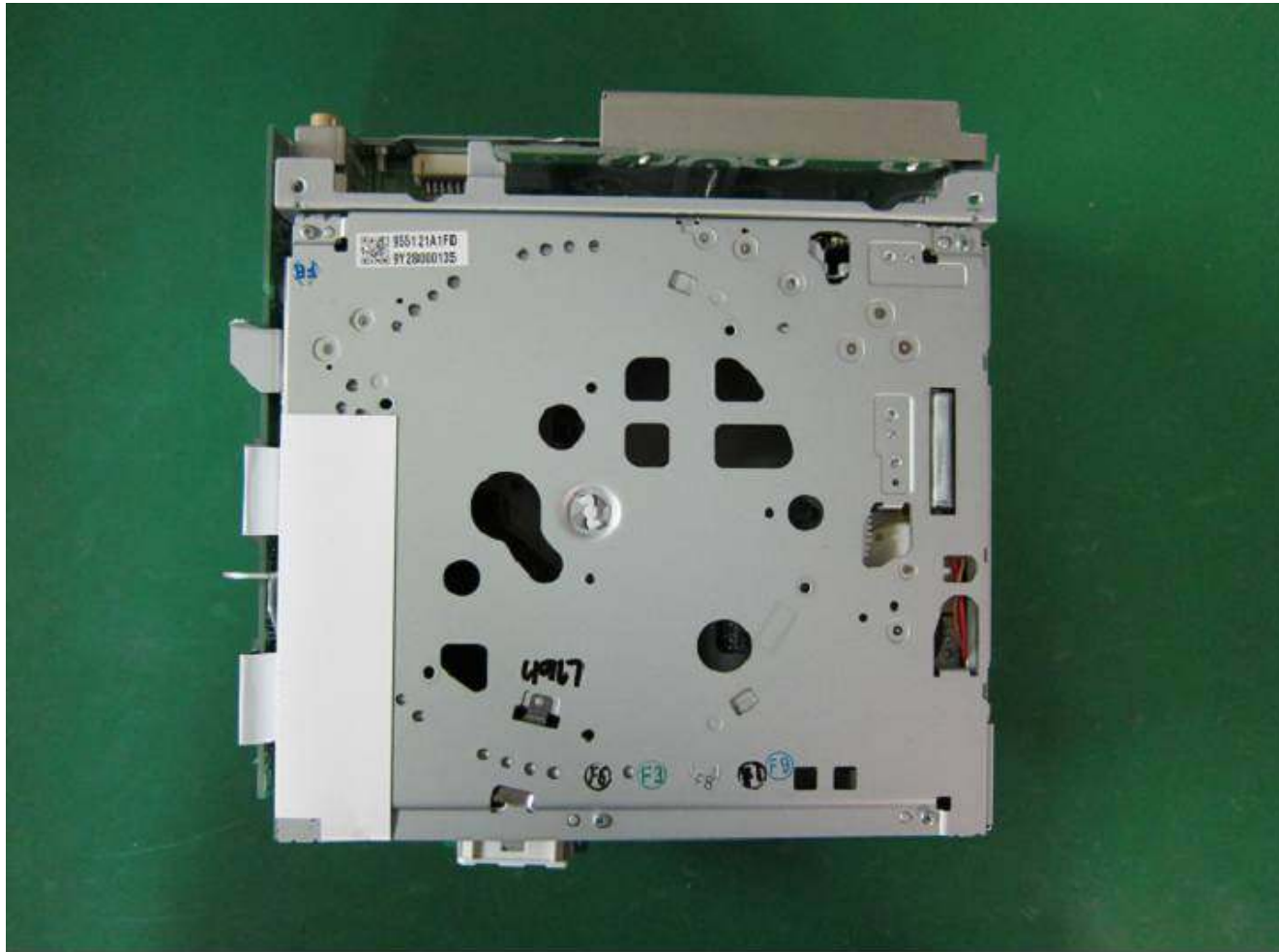
8. HDD unit is removed.



NR-172 Photo

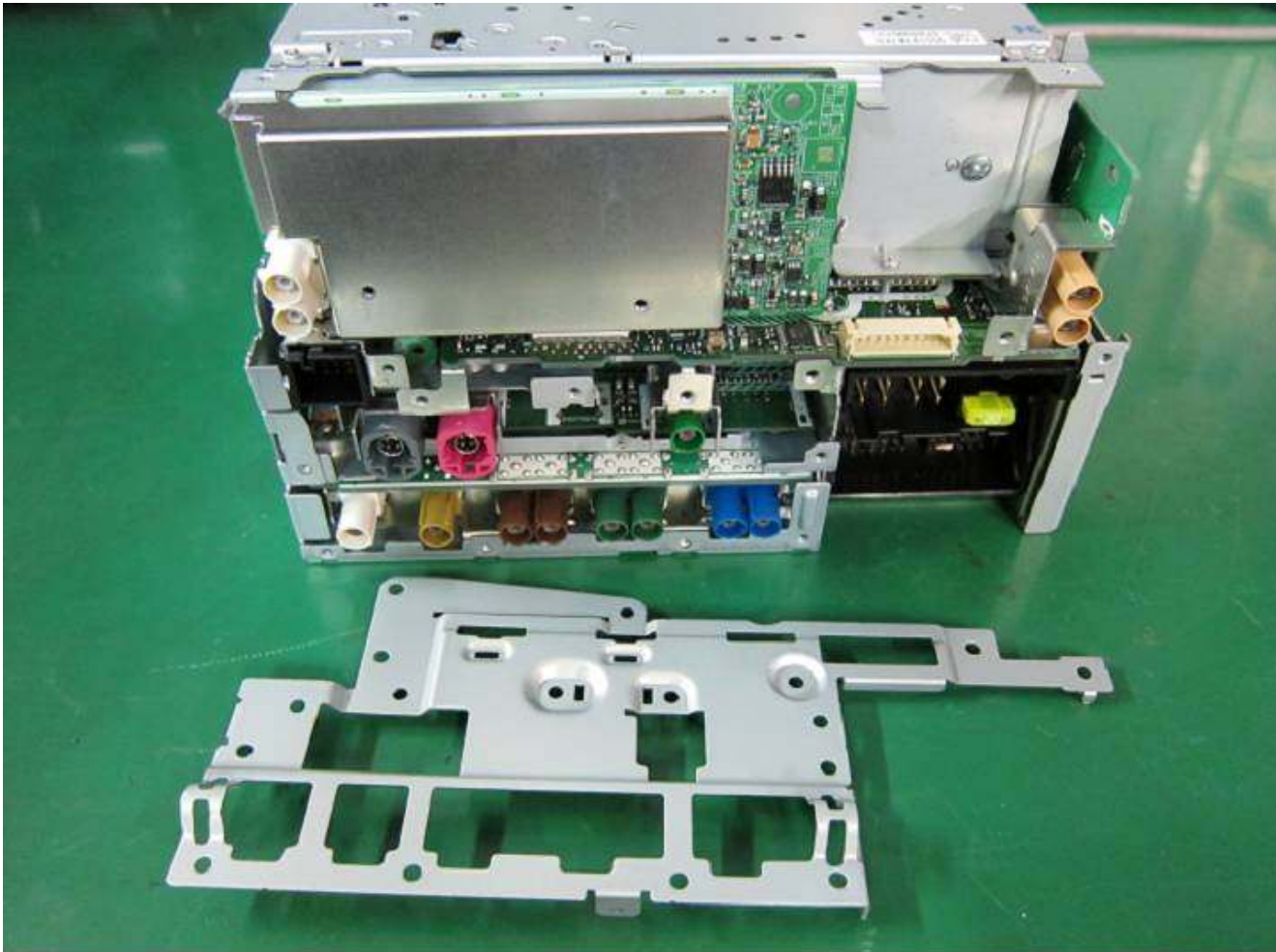


NR-172 Photo



10. Top cover is removed.

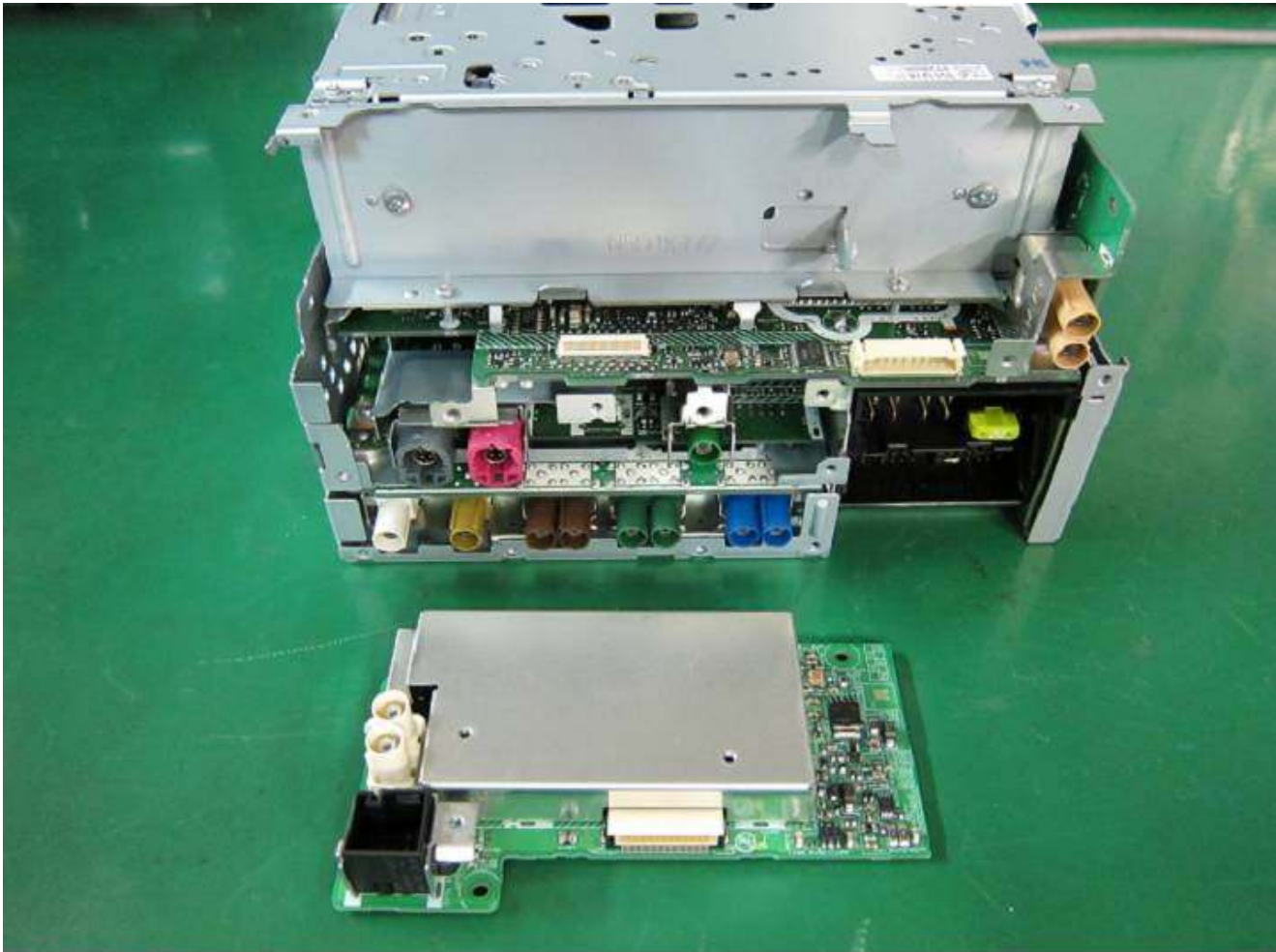
NR-172 Photo



11. Rear plate is removed.

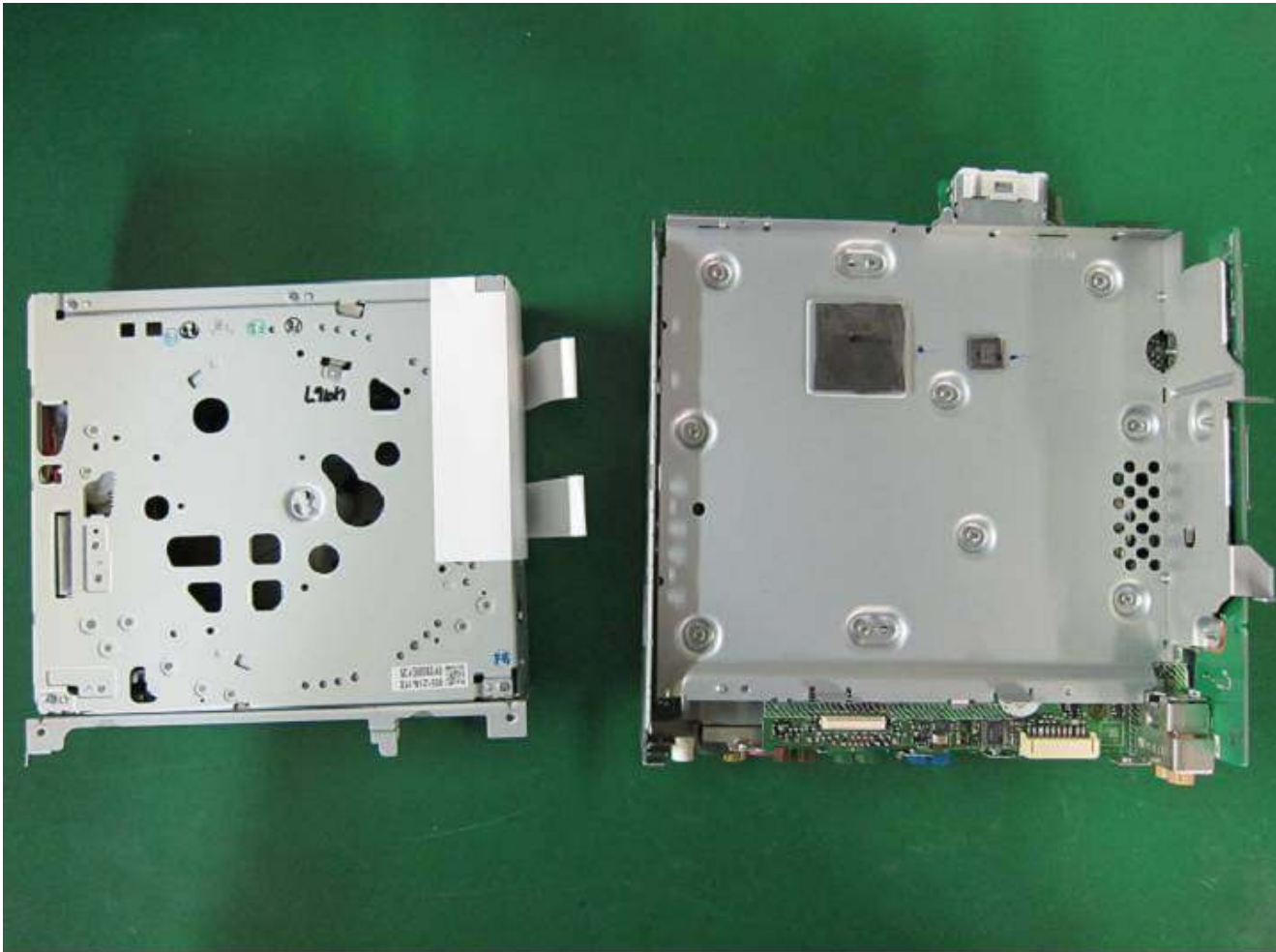


NR-172 Photo



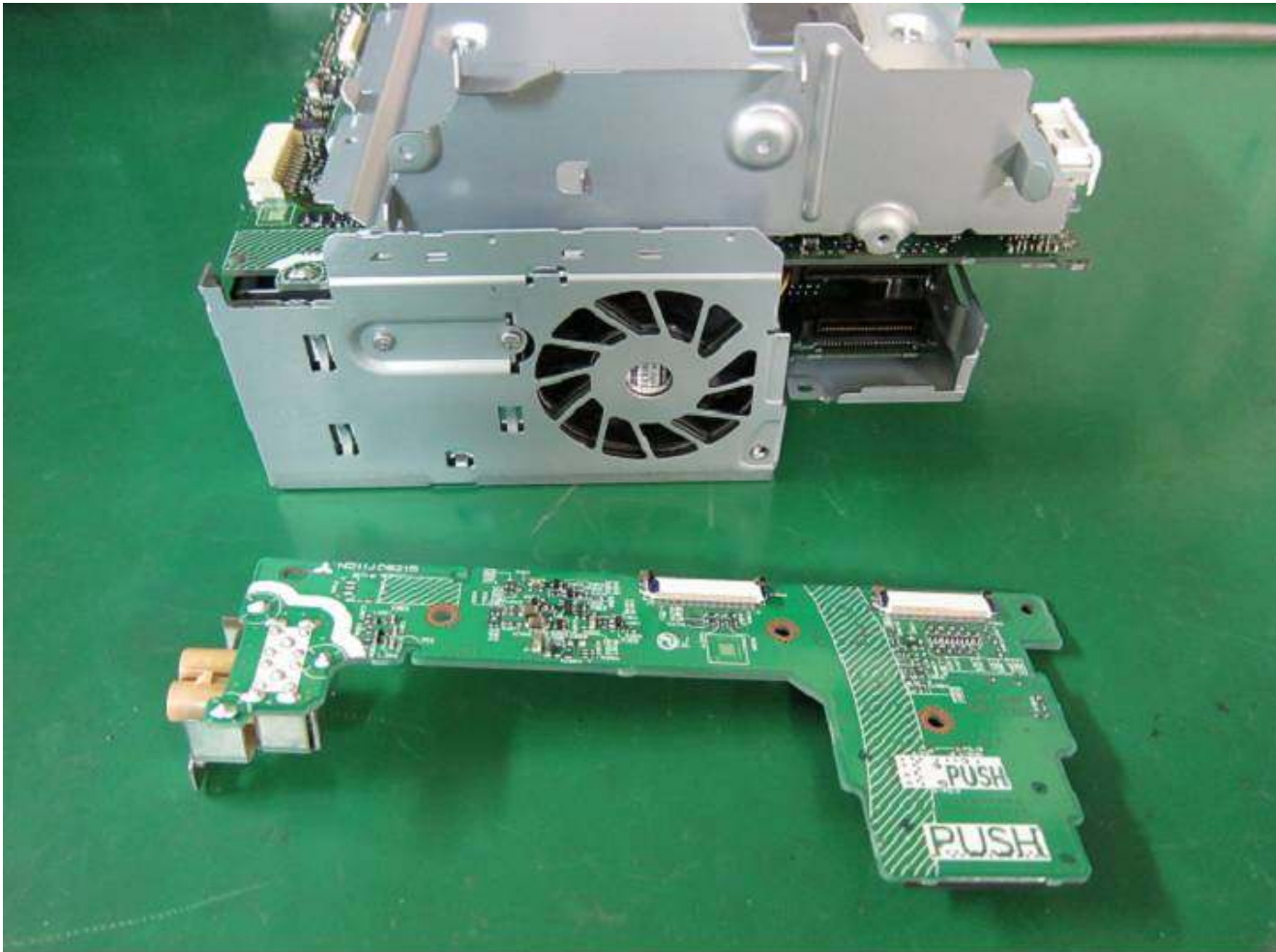
12. PCB-Tuner is removed.

NR-172 Photo



13. DVD drive is removed.

NR-172 Photo



14. PCB-IF is removed.

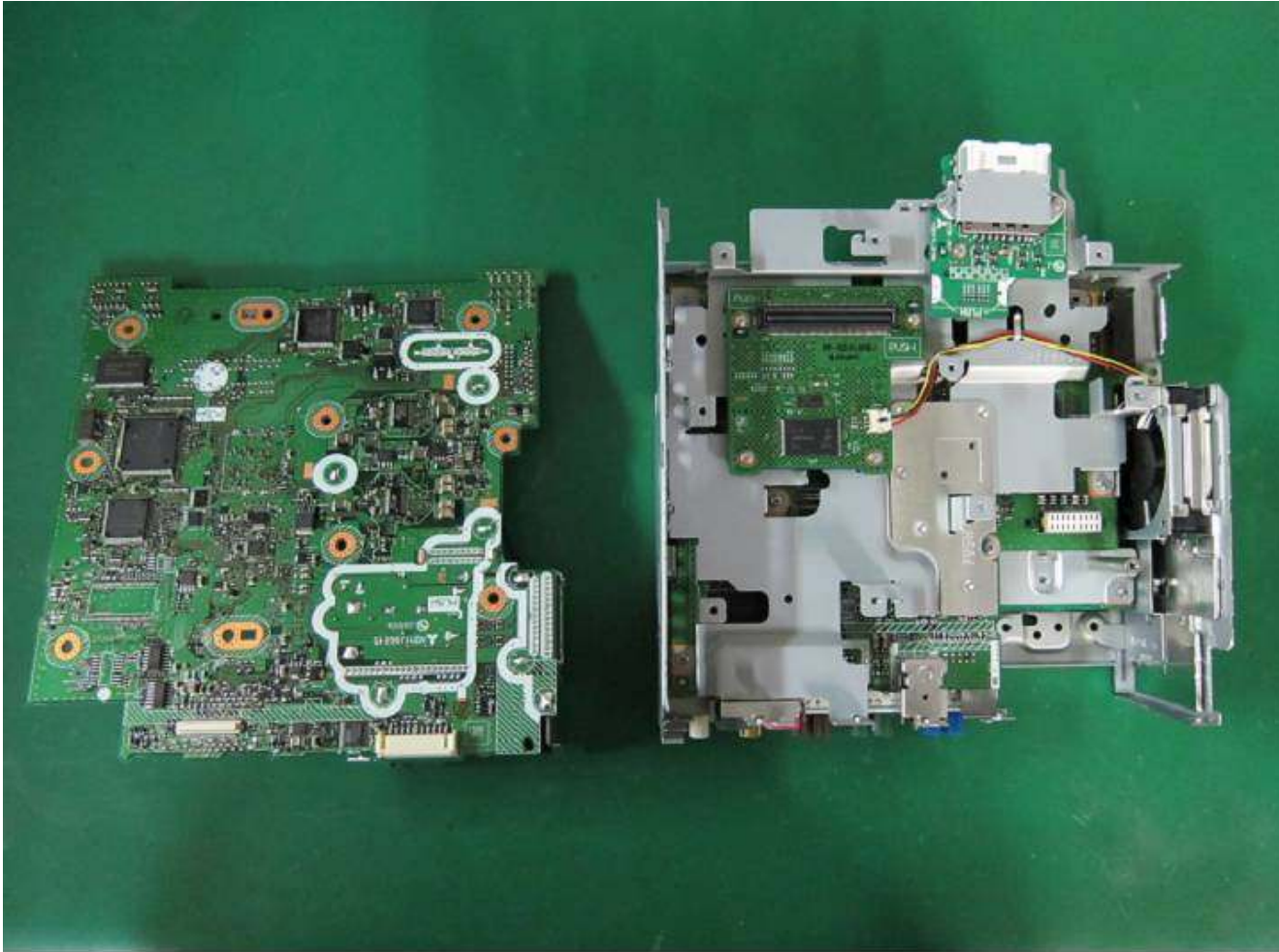


NR-172 Photo



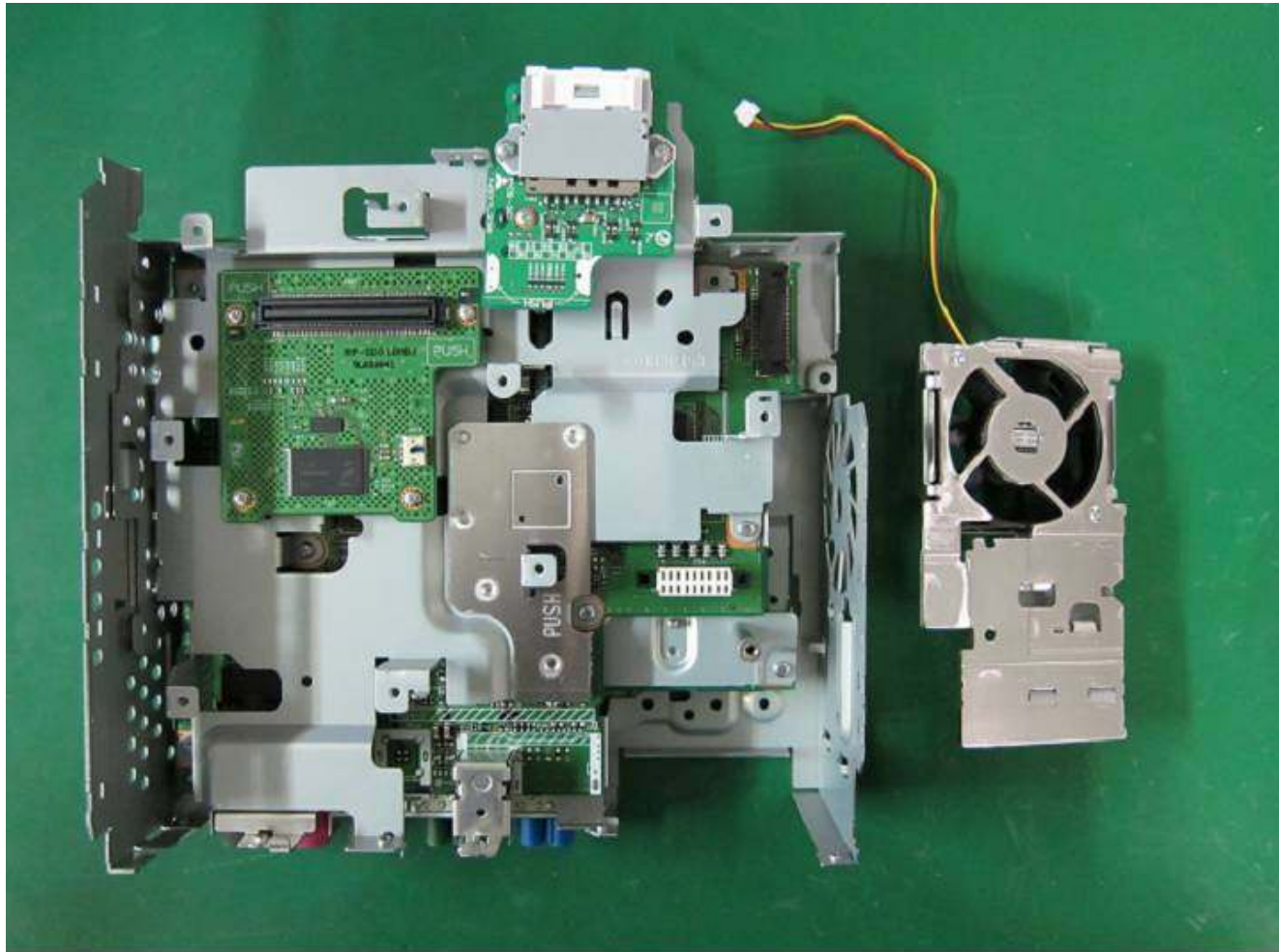
15. Internal plate is removed.

NR-172 Photo



16. PCB-Main is removed.

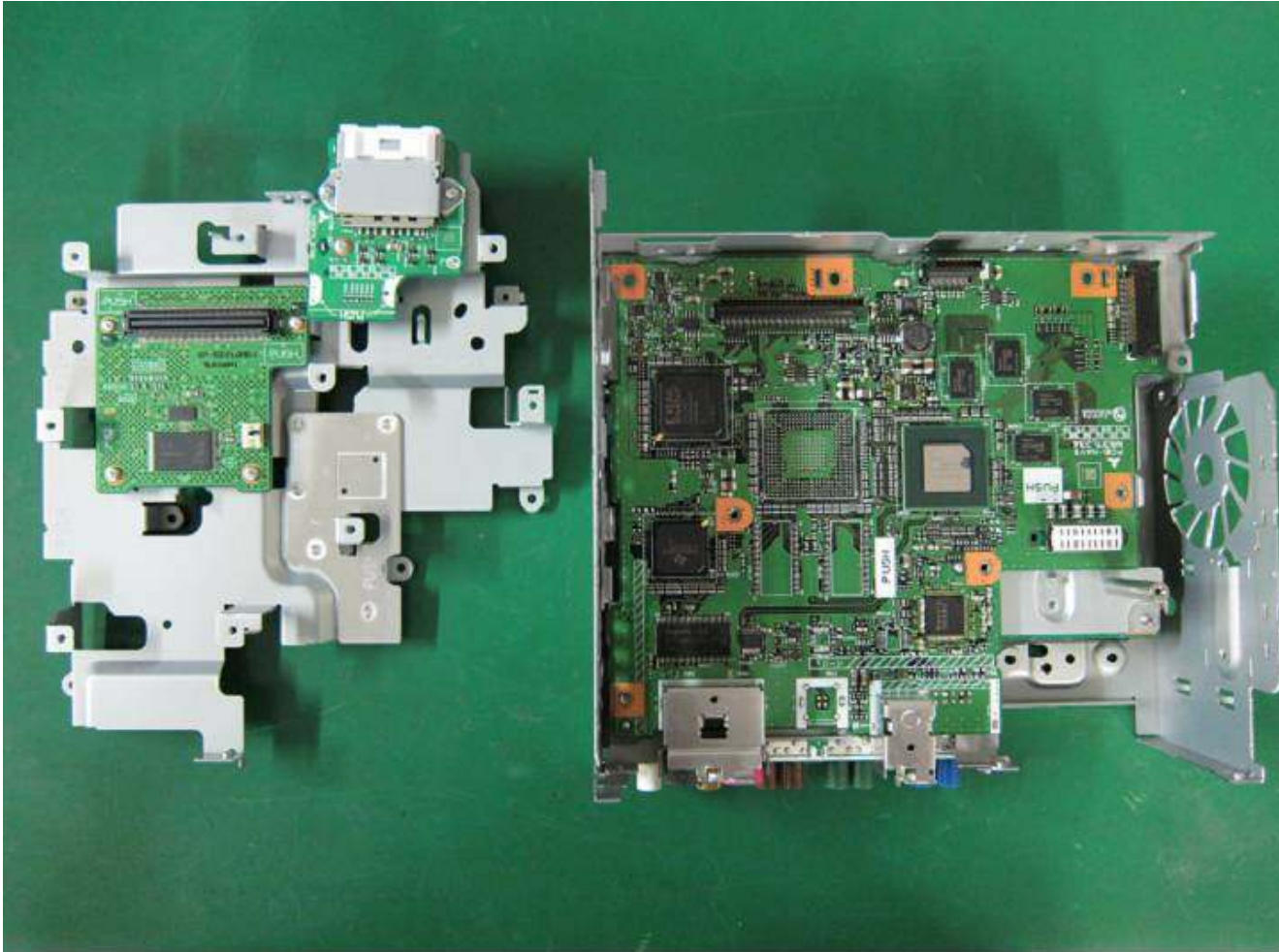
NR-172 Photo



17. FAN is removed.



NR-172 Photo



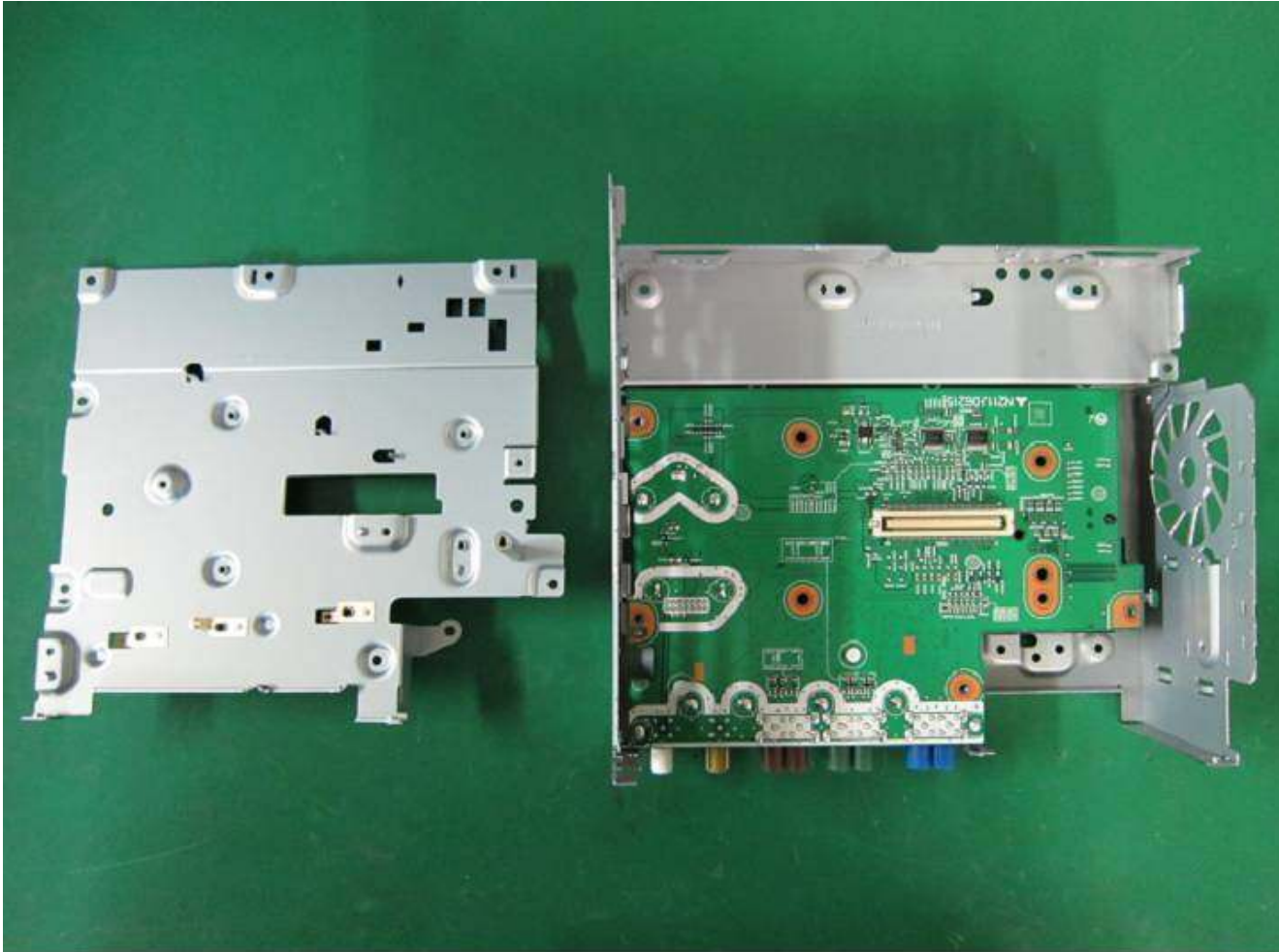
18. Internal plate is removed.

NR-172 Photo



19. PCB-Navi is removed.

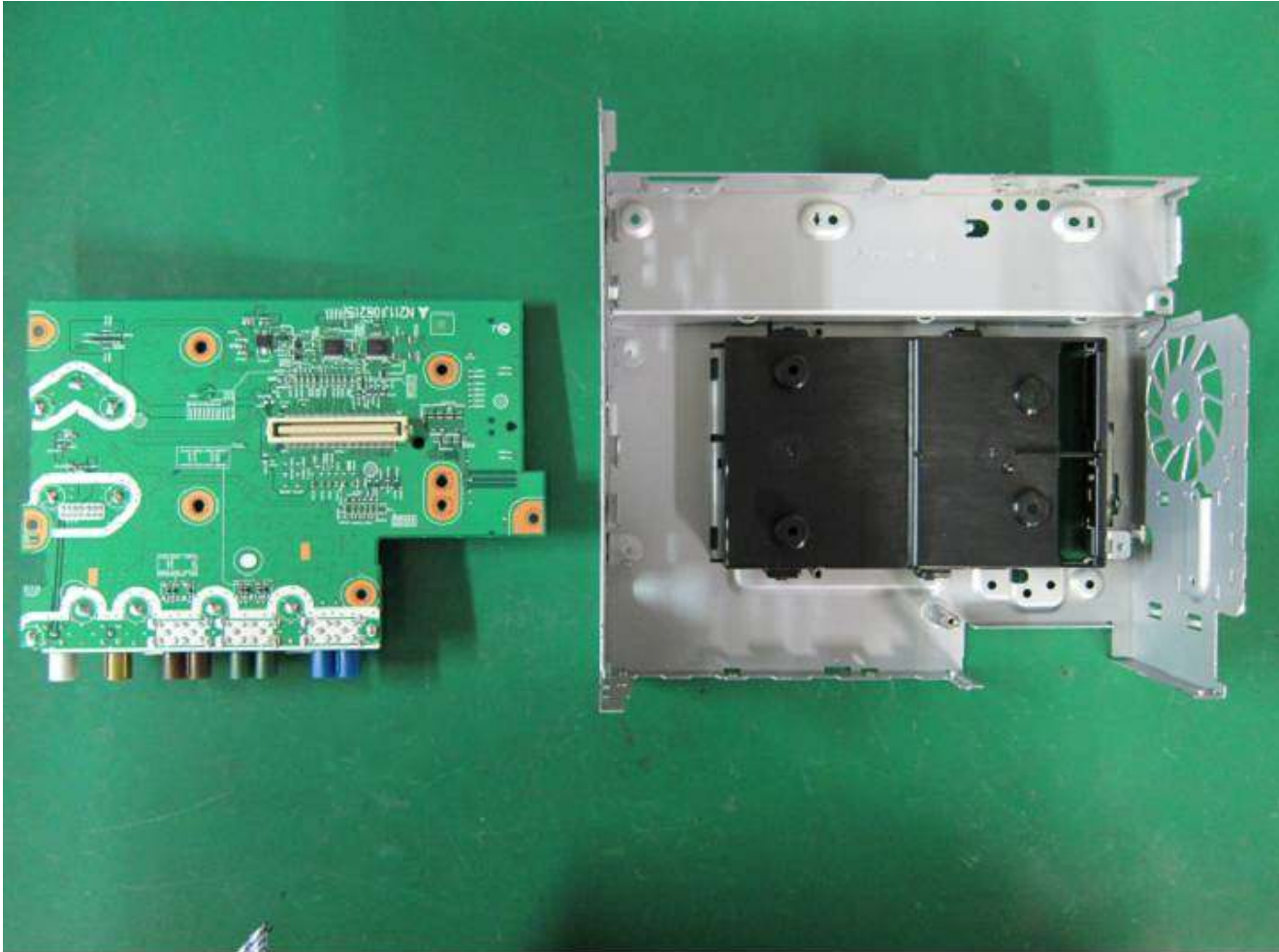
NR-172 Photo



20. Internal plate is removed.

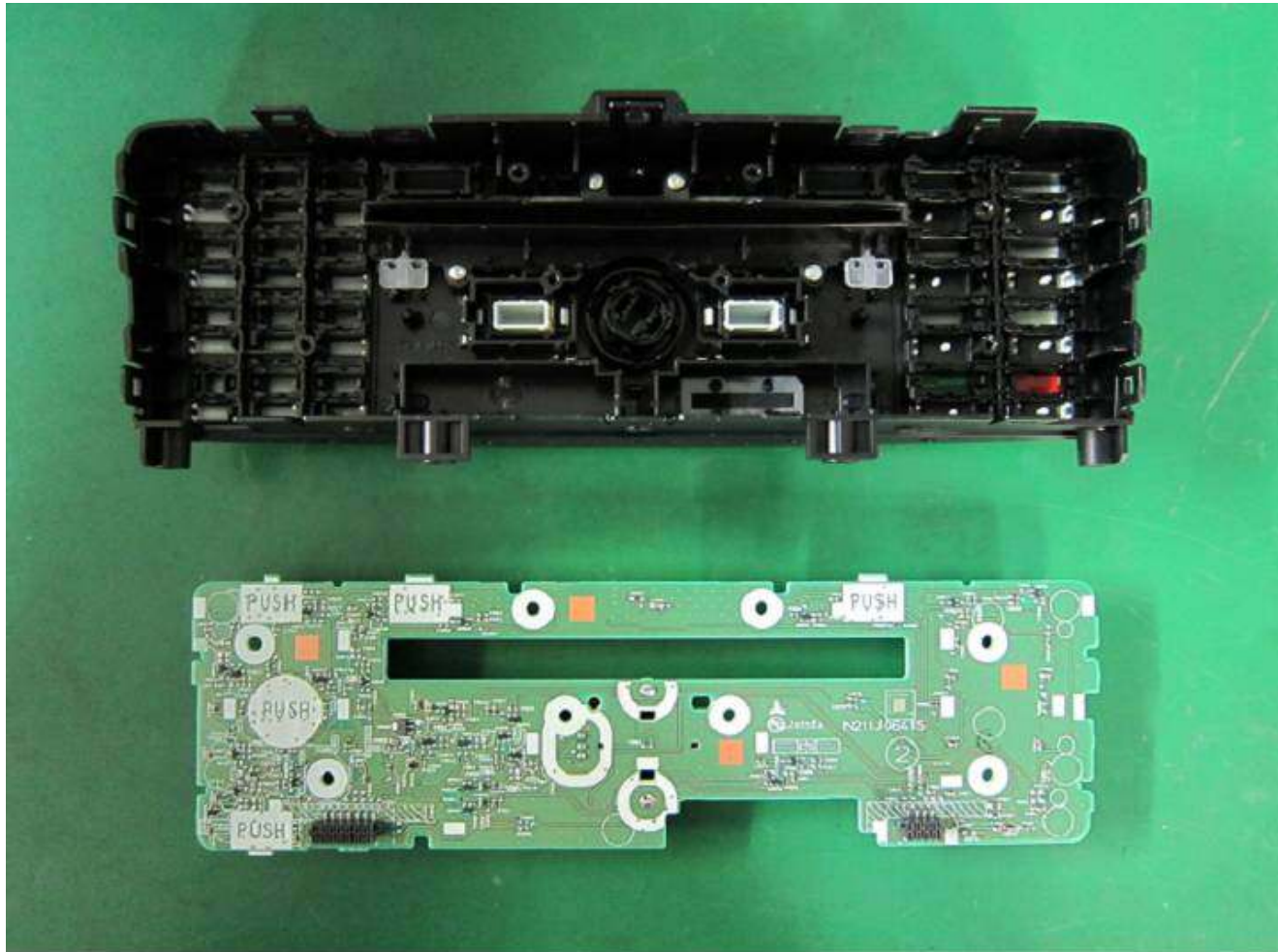


NR-172 Photo



21. PCB-GPS is removed.

NR-172 Photo



22. PCB-PANEL is removed.