

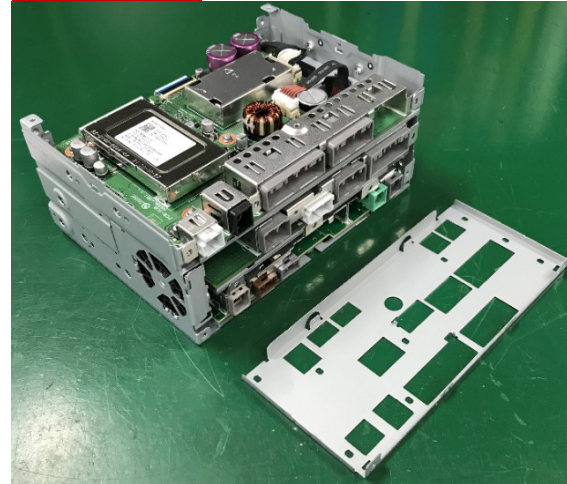
NR-000 Internal Photo

Change



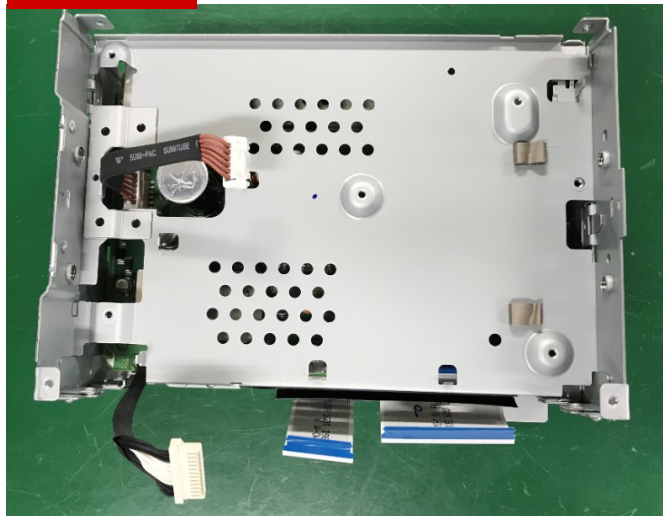
9. Top cover is removed

Change



10. Rear chassis is removed

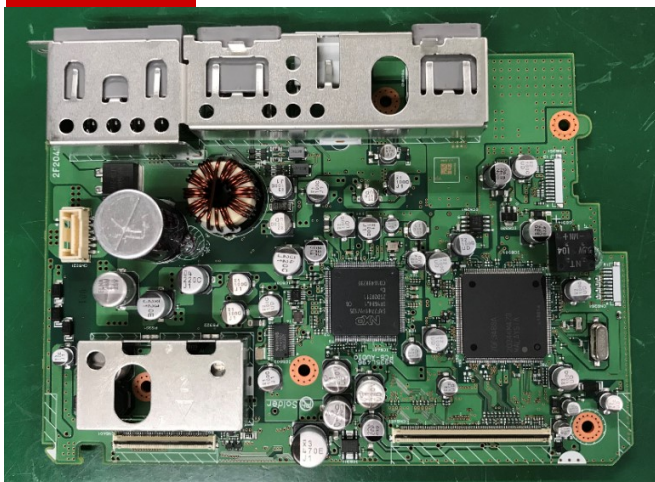
Change



11. PCB-SUB is removed

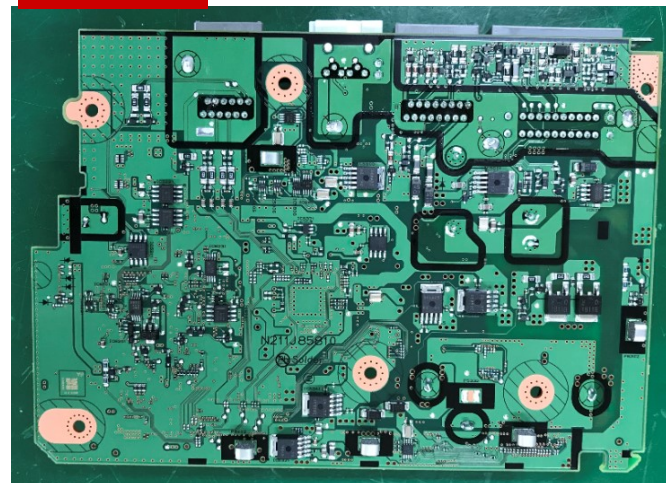
NR-000 Internal Photo

Change



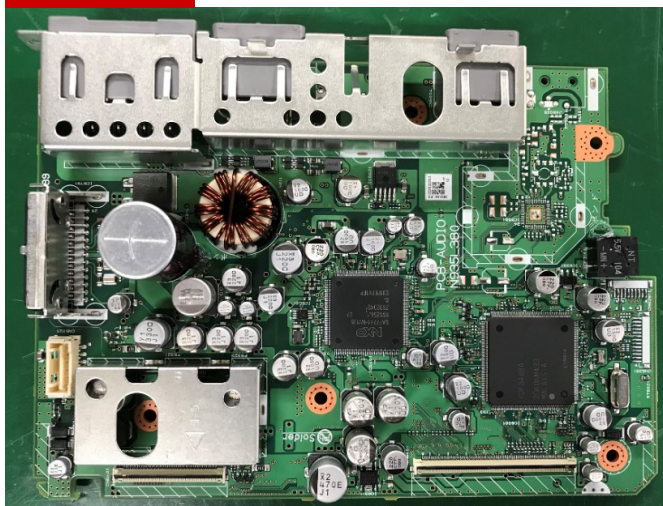
16. PCB-AUDIO (External amp model)

Change



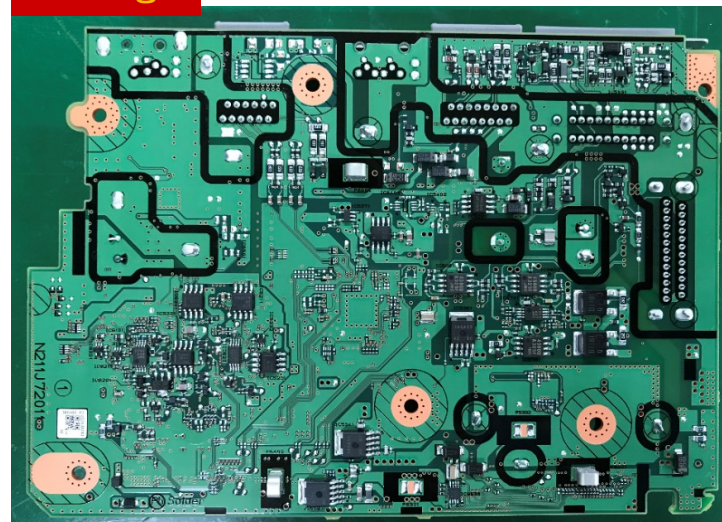
17. PCB-AUDIO (External amp model, reverse)

Change



16. PCB-AUDIO (Internal amp model)

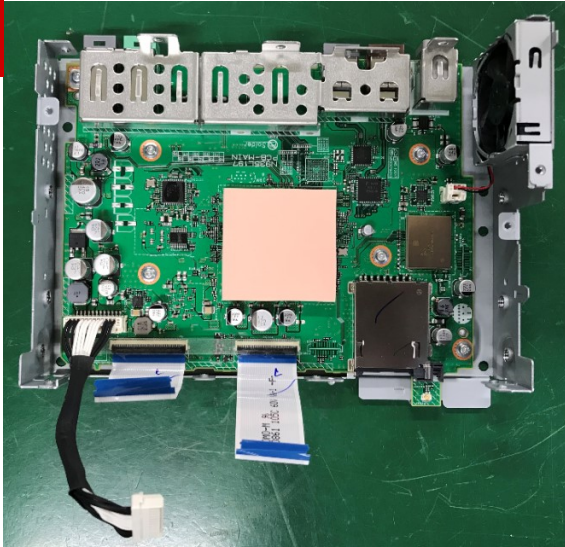
Change



17. PCB-AUDIO (Internal amp model, reverse)

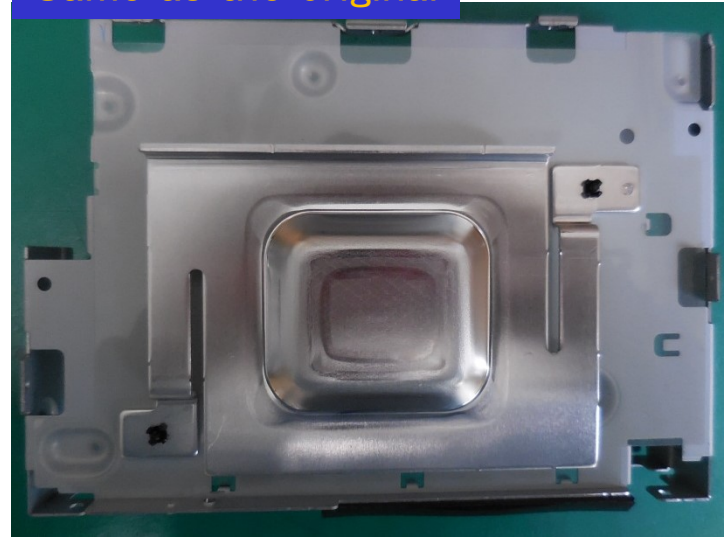
NR-000 Internal Photo

Change



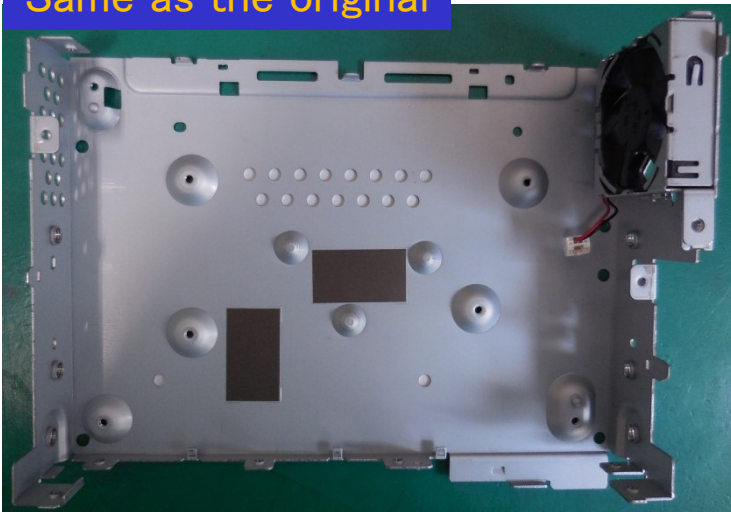
18. PCB-AUDIO bottom chassis is removed

Same as the original



19. PCB-AUDIO bottom chassis (reverse side)

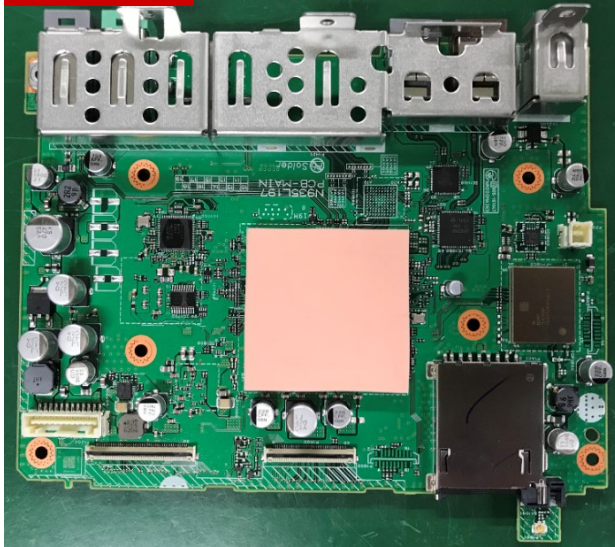
Same as the original



20. PCB-MAIN is removed

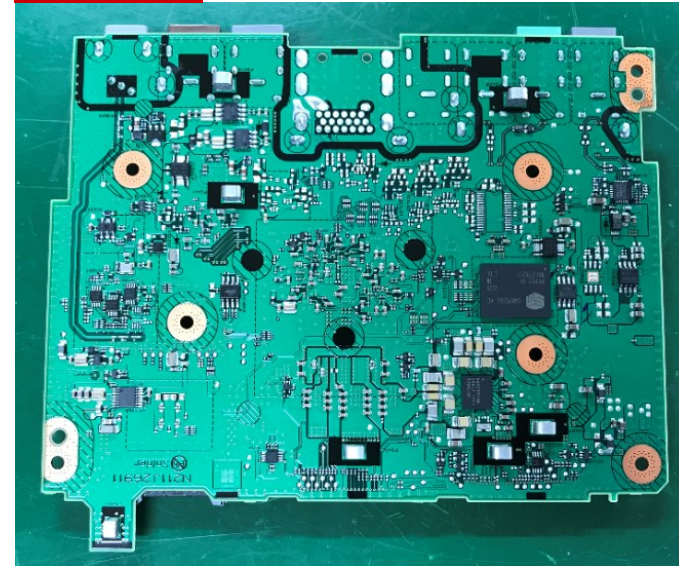
NR-000 Internal Photo

Change



21. PCB-MAIN

Change



22. PCB-MAIN (reverse side)