

R1LOW-R

Label location

For 25MY PV

Design-A Section, Multimedia Design Dept.

MITSUBISHI ELECTRIC CORPORATION

2-3-33, Miwa Sanda-city,

Hyogo 669-1513

Japan

Revision History

Revision	Date	Description
1	2023/06/20	Updated for 25MY PV sample.

Label

MOPAR®

This device complies with part 15 of FCC Rules and Innovation, Science and Economic Development Canada's licence-exempt RSS(s). Operation is subject to the following two conditions: (1) this device may not cause harmful interference, and (2) this device must accept any interference received, including interference that may cause undesired operation.

L'émetteur/récepteur exempt de licence contenu dans le présent appareil est conforme aux CNR d'Innovation, Sciences et Développement économique Canada applicables aux appareils radio exempts de licence. L'exploitation est autorisée aux deux conditions suivantes :1. L'appareil ne doit pas produire de brouillage;2. L'appareil doit accepter tout brouillage radioélectrique subi, même si le brouillage est susceptible d'en compromettre le fonctionnement.

IC: 662K-R1LOWR HVIN:79 FCC ID:UJH-R1LOW-R

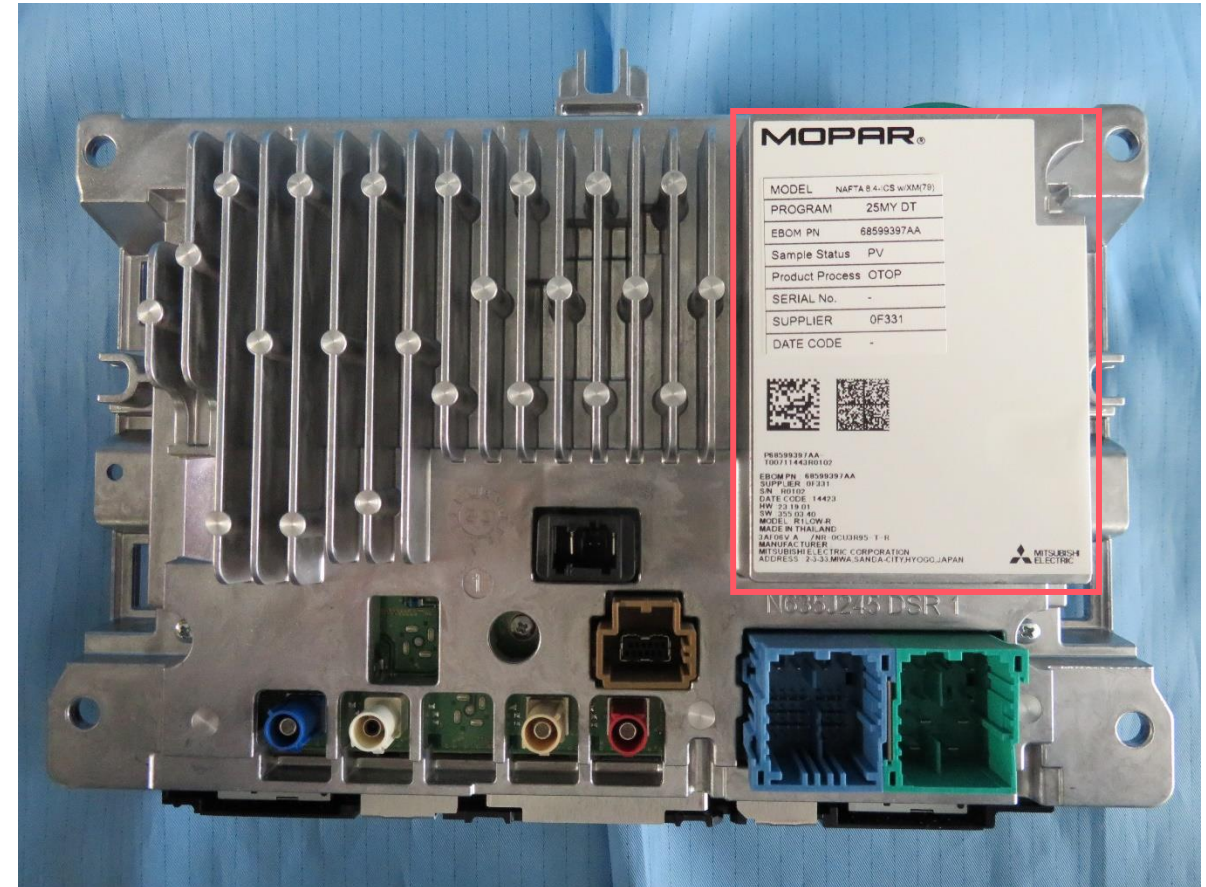
IFT :RCPMIR122-1895



EBOM PN :
SUPPLIER :
S/N :
DATE CODE :
HW :
SW :
MODEL : R1LOW-R
MADE IN MEXICO

MANUFACTURER :
MITSUBISHI ELECTRIC CORPORATION
ADDRESS : 2-3-33,MIWA,SANDA-CITY,HYOGO,JAPAN

Location



Label

MOPAR®

This device complies with part 15 of FCC Rules and Innovation, Science and Economic Development Canada's licence-exempt RSS(s). Operation is subject to the following two conditions: (1) this device may not cause harmful interference, and (2) this device must accept any interference received, including interference that may cause undesired operation.

L'émetteur/récepteur exempt de licence contenu dans le présent appareil est conforme aux CNR d'Innovation, Sciences et Développement économique Canada applicables aux appareils radio exempts de licence. L'exploitation est autorisée aux deux conditions suivantes : 1. L'appareil ne doit pas produire de brouillage; 2. L'appareil doit accepter tout brouillage radioélectrique subi, même si le brouillage est susceptible d'en compromettre le fonctionnement.

IC: 662K-R1LOWR HVIN:80 FCC ID:UJH-R1LOW-R

Connection and use of this communications equipment is permitted by the Nigerian communications commission

AGREE PAR ARTP SENEGAL
 Numéro d'agrément : 072163/AG/ER

NCA APPROVED : 7E5-7M-XA8-RDR

EBOM PN :
 SUPPLIER :
 S/N :
 DATE CODE :
 HW :
 SW :
 MODEL : R1LOW-R
 MADE IN MEXICO

MANUFACTURER :
 MITSUBISHI ELECTRIC CORPORATION
 ADDRESS : 2-3-33,MIWA,SANDA-CITY,HYOGO,JAPAN



R-NZ

AGRÉÉ PAR L'ANRT MAROC
 Numéro d'agrément : MR31126ANRT2021



BT: 2402-2480MHz -5.0dBm,
 WLAN:
 2412-2472MHz 8.6dBm,
 5745-5825MHz 3.3dBm,EIRP

IFT : RCPMIR122-1895



Agréé par l'ARPCE:
 060/IR/HMG/PC/ARPCE/2022
 098/IR/HMG/PC/ARPCE/2023



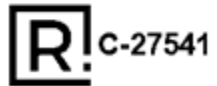
NR: 2022-01-I-0031



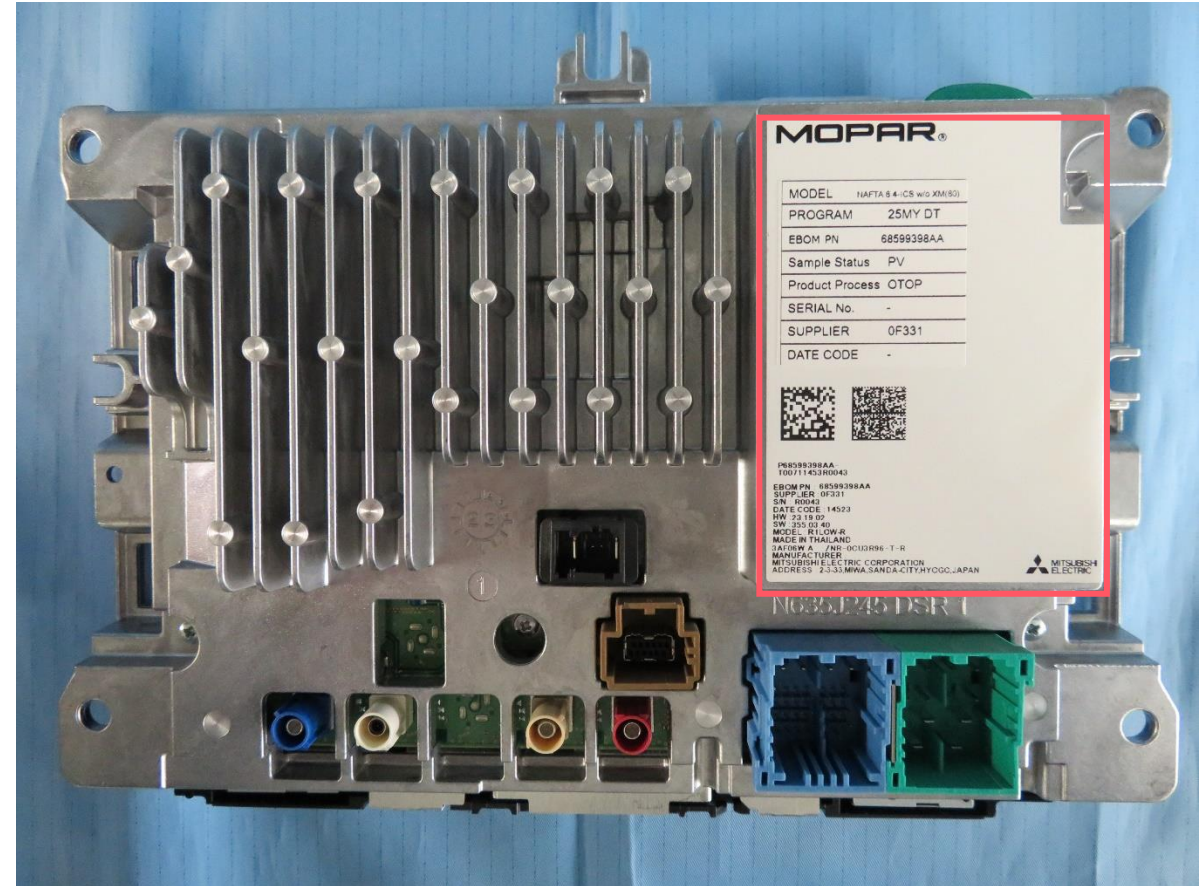
04707-22-06006

Este equipamento não tem direito à proteção contra interferência prejudicial e não pode causar interferência em sistemas devidamente autorizados.

Oman - TRA
 D090024
 TRA/TA-R/12968/22



Location



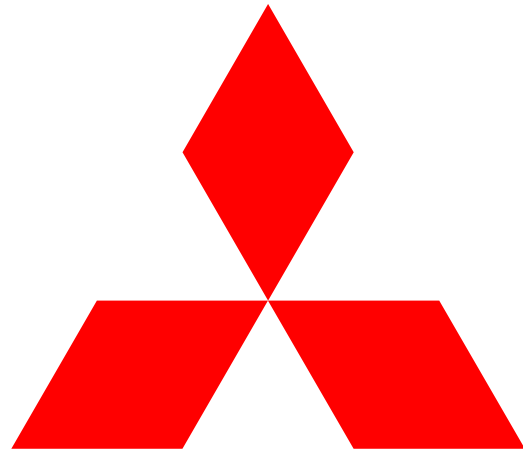
MOPAR®

MODEL	NAFTA 8+4-CS w/o XM(S)
PROGRAM	25MY DT
EBOM PN	6859398AA
Sample Status	PV
Product Process	OTOP
SERIAL No.	-
SUPPLIER	0F331
DATE CODE	-



6859398AA
 100711433R0043
 EBOM PN 6859398AA
 SUPPLIER 0F331
 SN R0043
 DATE CODE 14521
 HW 23 18 02
 SW 235 02 40
 MODEL R1LOW-R
 MADE IN THAILAND
 JAPAN A 7NR-0010396-1-R
 MANUFACTURER
 MITSUBISHI ELECTRIC CORPORATION
 ADDRESS 2-3-33 MIWA SANDA-CITY HYOGO JAPAN





**MITSUBISHI
ELECTRIC**

Changes for the Better