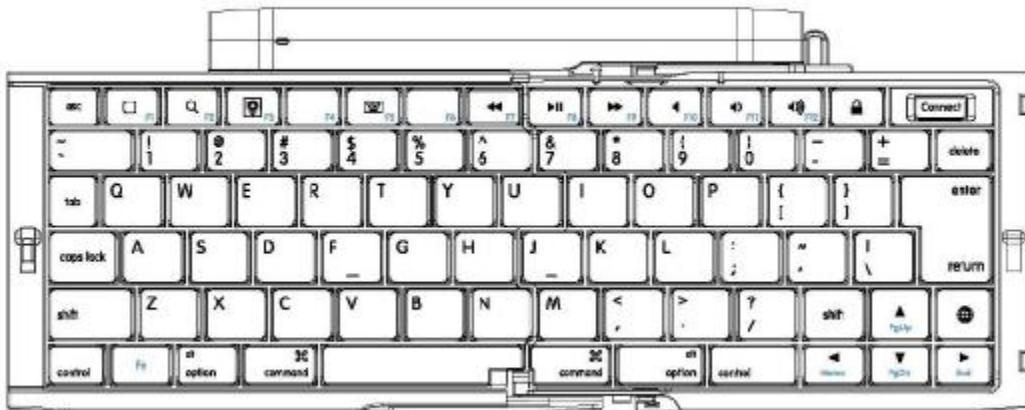


Foldable Bluetooth Keyboard User's Guide

Model No: IRK06B

Thanks for purchasing this Slim Bluetooth Keyboard,
This creative and easy-to-use Bluetooth Keyboard will bring you a whole new wireless life experience.

Appearance Drawing



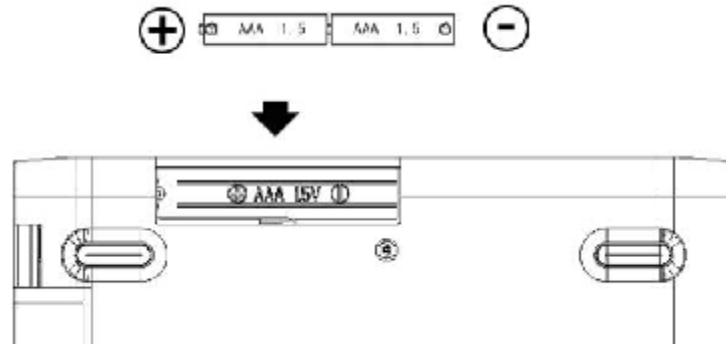
Main Features

- | Use Broadcom BCM20730 Chipset with wireless Bluetooth 3.0 interface
- | Features comfortable, ergonomic design with 14 function keys
- | Come with particular power managing software, indicates the power capacity in Microsoft Windows System automatically
- | Use the Bluetooth industry leading software solutions, WIDCOMM BTW (Microsoft officially designated software) Bluetooth software
- | Built-in software solutions with Bluetooth human interface device and comply with the standard version of the Bluetooth SIG Bluetooth 3.0
- | Work with Windows 98, ME, 2000, Server 2003, XP and Vista
- | Support SONY PS3
- | Frequency band: 2.402 - 2.483GHz unlicensed ISM band
- | Receiving sensitivity: -75dbm (standard)
- | RF output power: up to 4dbm as maximum, good for your health with lowest radiates
- | 310 mAh Li-Polymer Battery
- | Operation distance: 10m
- | Operation Temperature: 0-55°C
- | Operation Humidity: 10%-85% RH at 25°C
- | Storage Temperature: -20~+60°C
- | Storage Humidity: 5%-95% RH at 25°C
- | Dimension: 148×100×22 mm

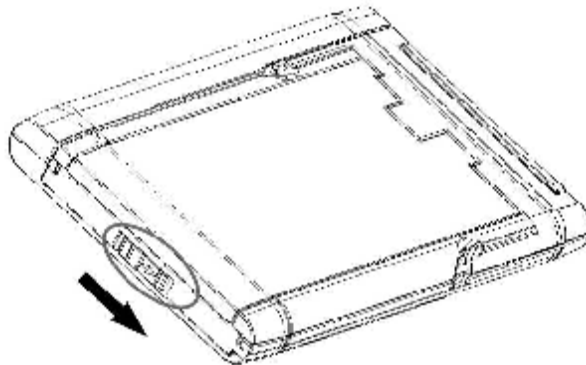
Installation Guide

Before you install the Bluetooth Keyboard, please make sure that the Bluetooth Dongle has been installed. Software available like Widcomm(Recommended), IVT or the Microsoft built-in software(can not connect to the headset).

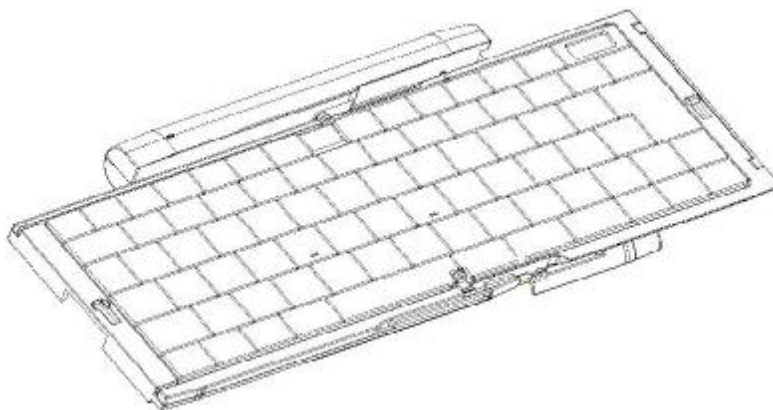
1. Using thumb to open the battery compartment of the keyboard and remove it by pulling back
2. Insert two 1.5V, AAA batteries into the compartment. Make sure to comply with the polarity markings.
3. Replace the batteries compartment.



4. Slide the switch down on side of keyboard to unlock the keyboard



5. Unfold the keyboard.



6. Press and release the “connect” on right top corner of the keyboard , when the “power” LED

start to flash white, the keyboard enters pairing mode.

Pair Procedure

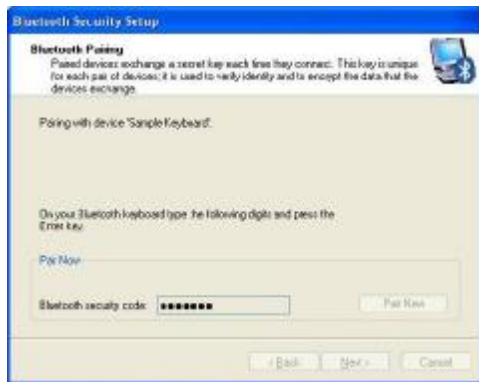
A: Pair on Widcomm (recommended)



1. Double click the Icon again, “My Bluetooth Place” pops up; select “Bluetooth ---Add Bluetooth facility”. Click “Next” button In the Setup Guild window.



2. When the system finds the Keyboard, select it and click “Next”.
3. Input the stochastic Pairing Code, and confirm.



1. Now you can use your keyboard at ease.

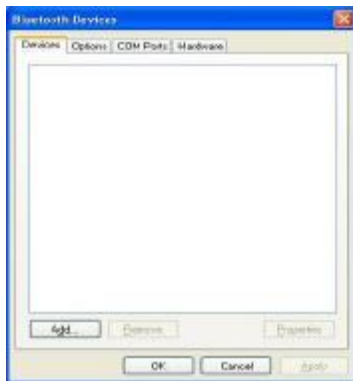
Tips:

If you are using the Widcomm Bluetooth Software, select the keyboard icon and click the right button of the keyboard and select “Status”, then you can check the power status of the batteries and setup alarm for shortage of battery.

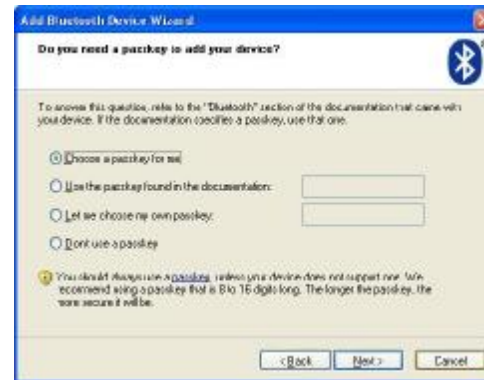
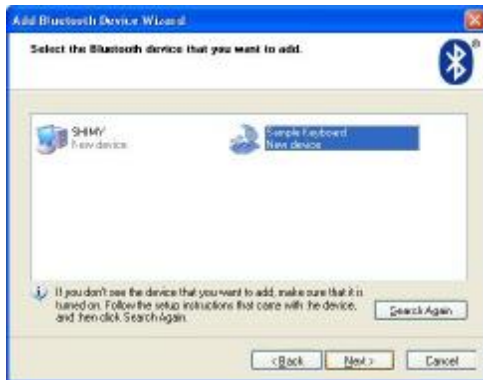


B. Pair on Microsoft built-in software

1. Make sure that the Bluetooth Function has been activated. Double click the Bluetooth Icon on the Task Bar or in the Control Panel, open the “Bluetooth Management” window, click “Add”, tick off “facility is ready for searching”, click “Next”.

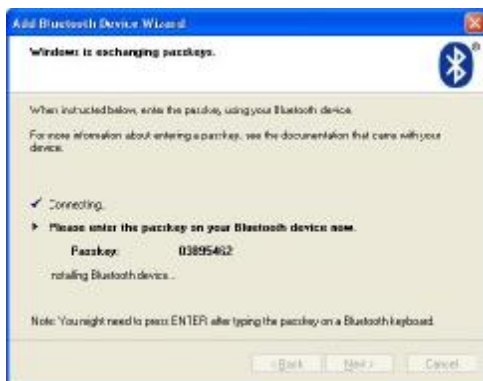


2. Wait till the keyboard is found, select keyboard and click “Next”.



3. Select” Choose a pass key for me”, click “Next”.

4. Input the pass key and press “Enter”, click “Next”, the system will finish the installation of the new facility automatically.

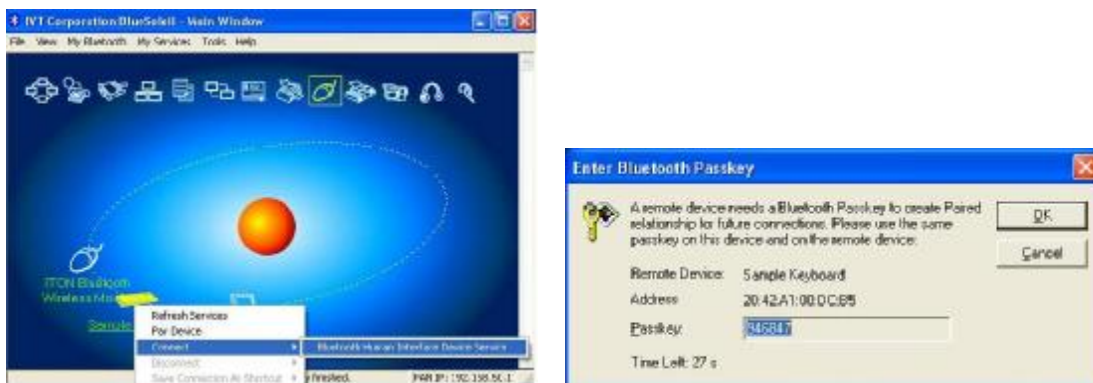


C. Pair on IVT Software

1. Make sure that the Bluetooth function is active. Double click the Bluetooth Icon, open the Management window, select “Search for Bluetooth facilities” or click the Round Ball in the middle of the window.



2. Click the Bluetooth Keyboard founded, click the right button for “Refresh Service”.
3. Select the Bluetooth Keyboard again, click the right button for “Connect-Bluetooth Input Service”, input the stochastic pass key, the system will auto install the HID facility. After that you can use your Bluetooth Keyboard at ease.



FAQ:

If unable to connect the Bluetooth Keyboard to the computer, or the Keyboard work unconventionally, please try the steps below:

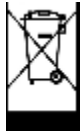
1. Before you install your Bluetooth Keyboard, please make sure you have done the Bluetooth Dongle installation procedure, and the Bluetooth facility is turned on.
2. Press and release the connect button on the bottom of Bluetooth Keyboard. The blue led light will change into a flashing mode.
3. Make sure that the Computer is connected to the Bluetooth Keyboard. If they are paired to

each other before, then under the Standby State, just double click the left button of the keyboard.

4. Make sure that the keyboard is within the effective range---10M.
5. Make sure that there's no change of the Bluetooth facility. If anything changed, please kindly pair again.
6. If your Bluetooth facility is connected to other Bluetooth products, please kindly confirm that the speed of the Bluetooth facility is enough.
7. Please kindly check the batteries. If they are short of power, replace them for new ones.

R & TTE Compliance Statement

This equipment complies with all the requirements of the DIRECTIVE 1999/5/EC OF THE EUROPEAN PARLIAMENT AND THE COUNCIL OF 9 March 1999 on radio equipment and telecommunication terminal equipment and the mutual recognition of their conformity (R & TTE).



Correct Disposal of this product. This marking indicates that this product should not be disposed with other household wastes throughout the EU. To prevent possible harm to the environment or human health from uncontrolled waste disposal, recycle it responsibly to promote the sustainable reuse of material resources. To return your used device, please use the return and collection systems or contact the retailer where the product was purchased. They can take this product for environmental safe recycling.

Federal Communication Commission Interference Statement

Warning: Changes or modifications to this unit not expressly approved by the party responsible for compliance could void the user's authority to operate the equipment.

This equipment has been tested and found to comply with the limits for a Class B digital device, pursuant to Part 15 of the FCC Rules. These limits are designed to provide reasonable protection against harmful interference in a residential installation. This equipment generates uses and can radiate radio frequency energy and, if not installed and used in accordance with the instructions, may cause harmful interference to radio communications. However, there is no guarantee that interference will not occur in a particular installation. If this equipment does cause harmful interference to radio or television reception, which can be determined by turning the equipment off and on, the user is encouraged to try to correct the interference by one of the following measures:

- Reorient or relocate the receiving antenna.
- Increase the separation between the equipment and receiver.
- Connect the equipment into an outlet on a circuit different from that to which the receiver is connected.
- Consult the dealer or an experienced radio/TV technician for help.

This device complies with Part 15 of the FCC Rules. Operation is subject to the following two conditions: (1) This device may not cause harmful interference, and

(2) this device must accept any interference received, including interference that may cause undesired operation.

FCC Caution: Any changes or modifications not expressly approved by the party responsible for compliance could void the user's authority to operate this equipment.

This device complies with FCC RF radiation exposure limits set forth for general population (uncontrolled exposure). This device must not be collocated or operating in conjunction with any other antenna or transmitter.

CAUTION:

**RISK OF EXPLOSION IF BATTERY IS REPLACED BY AN INCORRECT TYPE
DISPOSE OF USED BATTERIES ACCORDING TO THE INSTRUCTIONS**