

105x148.5(mm)正反面印刷騎馬釘

封面

封面裏



## 2.4GHz Cordless Mouse 2.4GHz無線滑鼠

產品型號：IRM22R  
系列型號：IRM26R / IRM28R  
接收器型號：DG009 / DG010  
Quick Installation Guide

2.4GHz Cordless Mouse

## CONTENTS

English Quick Installation Guide ..... 1-1

繁體中文 快速安裝手冊 ..... 2-1

2.4GHz Cordless Mouse US 1-1

### 2.4GHz Cordless Mouse

#### Package Contents

- Cordless mouse X1
- Battery AA X1
- Nano dongle X 1
- User's Manual X1



#### System Requirements

- Microsoft Windows system: Windows® 7, Windows® 8.1, Windows® 10.
- Available USB Port

#### Features

- Wireless connection works freely without restrictions of space, angle or distance.
- Nano receiver storage inside mouse.

2.4GHz Cordless Mouse US 1-2

### 2.4GHz Cordless Mouse

#### Specifications

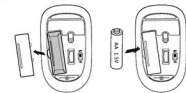
- **Mouse**
- Interface : Cordless 2.4GHz
- Buttons : 3 buttons
- Resolution : 1200 dpi Optical
- Power On/Off switch
- Effective Distance : Approx. 10 M
- Battery power life : Approx. 12 months (4 hrs a day, 5 day a week)
- Batteries : AA x 1
- Dimension : 104 (L) X 61 (W) X 36.5 (H) mm
- Weight (battery excluded) : Approx. 54 g
- **Receiver**
- Interface : USB
- Dimension : 18.0 (L) x 13.1 (W) x 5.7 (H) mm

2.4GHz Cordless Mouse US 1-3

### 2.4GHz Cordless Mouse

#### Hardware Installation

1. Set up the Mouse  
(Put provided batteries into mouse's batteries housing)
2. Easy automatic cordless connection :  
• Connect the USB nano receiver to your computer into your PC USB port, wait until automatic installation has completed.
3. Ready to use.



2.4GHz Cordless Mouse US 1-4

### 2.4GHz Cordless Mouse

#### Troubleshooting

- What do I do if the cordless mouse does not work ?
1. Check the USB dongle receiver is connected to your computer's USB port.
  2. Make sure the batteries are correctly installed into your cordless mouse.  
(The positive (+) and negative (-) ends of each battery must match the polarity signs in the battery housing)
  3. Make sure the batteries power qualities are good for use.
  4. Make sure the ID Setting process is well completed.
  5. Please change batteries immediately when mouse works on screen does not move or move erratically.
  6. Warning: Please remove batteries from your cordless mouse when not using for a long period of time.
  7. Mouse will have reduced tracking performance on very shiny or transparent surfaces.
  8. Cordless performance : Metal object close to or in between the device. (Please remove objects.)

2.4GHz Cordless Mouse US 1-5

### 2.4GHz Cordless Mouse

#### Cordless ID Setting

- The cordless mouse were already pairing OK before shipment. So the user does not need to do any pairing. Once need to re-pairing, please follow below steps to complete the necessary ID-Setting process for your cordless mouse and USB dongle receiver.
1. Make sure the mouse hardware installation is completed.
  2. Unplug and Plug again the USB dongle receiver into your computer's USB port.
  3. Waiting for the USB plug and play initialization completed.
  4. For mouse ID setting :  
Turn your cordless mouse on and move the mouse close to the USB dongle receiver within 15cm, then click and hold left and right button of mouse to start ID setting process. (It will take about 4~8 seconds waiting time)
  5. Ready to use
  6. If the mouse or keyboard doesn't work properly, please remove the USB dongle receiver from computer's USB port, then repeat do step 2 to 4 step again.

2.4GHz Cordless Mouse CH 2-1

### 2.4GHz Cordless Mouse

#### 包裝內容

- 無線滑鼠 X 1
- AA 鹼性電池 X 1
- 小型接收器 X 1
- 快速安裝手冊 X 1
- 保證卡 x 1



#### 系統需求

- 微軟的視窗系統 Windows® 7 Windows® 8.1, Windows® 10.
- 可用的USB傳輸埠

#### 產品特色

- 無線連接傳輸，不受空間角度及距離約束。
- 不占空間的Nano小型接收器設計，不用時可收納於滑鼠內，方便攜帶。

2.4GHz Cordless Mouse CH 2-2

### 2.4GHz Cordless Mouse

#### 產品規格

- 連接介面：無線 2.4GHz
- 按鈕數量：3 個
- 解析度：光學1200 dpi
- 電源開關：On/Off
- 傳輸距離：約10公尺 (技術理論值, 在無任何障礙下)
- 電池電力壽命：約12個月 (每日4小時，一週5天計算)
- 電源：1 顆AA 電池 (建議使用勁量或金頂鹼性長效電池)
- 產品尺寸：104 (L) X 61 (W) X 36.5 (H) mm
- 接收器
- 連接介面：USB
- 產品尺寸：20 (L) X 12 (W) X 5 (H) mm
- 額定電壓/電流：DC 5V / 50 mA以下

2.4GHz Cordless Mouse CH 2-3

### 2.4GHz Cordless Mouse

#### 硬體安裝

- 在您安裝電池時，請確認您所使用的為新電池，為了電池壽命考量，建議您使用Energizer (勁量) 或者Duracell (金頂) 品牌鹼性電池。
1. 滑鼠安裝：
    - 取下滑鼠背後的電池蓋，置入電池，並且確認電池的正、負極與電池蓋內的標示方向相符；關上電池蓋。
    - 開啟滑鼠底部的電源開關。
  2. 輕鬆自動無線連接
    - 開啟電腦電源，然後將無線接收器的USB接頭插入電腦的USB連接埠，此時電腦會自動偵測到無線接收器並與上述的滑鼠進行連接。
  3. 完成安裝可使用。



2.4GHz Cordless Mouse CH 2-4

### 2.4GHz Cordless Mouse

#### 疑難排解

- 若無線滑鼠無法正常動作有任何疑問，請嘗試下列步驟說明：
- 重新插拔USB總線無線接收器，並確認與電腦的USB連接埠正常連接。
  - 確認電池的正負極是與電池蓋內的標示方向相同。
  - 注意只能使用鹼性電池。
  - 當滑鼠游標在電腦螢幕上移動變緩或難移不易控制，可能電源不足，請更換電池。
  - 重新進行ID識別碼的設定。
  - 確定電池的蓄電能力是沒有問題，請勿將老舊電池或不同類型 (例如鋅銀或鹼性) 電池混合使用。
  - 長時間不使用滑鼠裝置，請將電池取出。
  - 無線產品使用時，若中間有金屬等干擾源，將會影響無線接收距離。
  - 滑鼠若於桌面或透明桌面使用，將會影響滑鼠性能。

2.4GHz Cordless Mouse CH 2-5

### 2.4GHz Cordless Mouse

#### ID辨識碼設定

- 每款無線滑鼠在使用前需進行ID辨識碼設定，但此產品在出廠時即完成ID設定碼，使用者只需將接收器插入電腦的USB連接埠之後即可立即使用此無線滑鼠，此ID設定的功能在於防止電腦與滑鼠間之無線訊號被其他在同一環境下的無線產品所影響，才需進行設定。
- 如果滑鼠無法正常運作的話，請依照下列步驟重新設定ID。
1. 確定滑鼠的電池已經完成安裝，且電池有電。
  2. 將插於電腦埠的USB接收器重新插拔。
  3. 重新插拔後，電腦會重新偵測到接收器。
  4. 滑鼠設定程序：
    - 將滑鼠底部的電源打開，紅色的感應器出現光亮代表電源已經成功開啟可以運作，移動滑鼠靠近USB接收器，距離約15公分以內；然後同時按下滑鼠左鍵右鍵，此時滑鼠會自行與接收器進行ID辨識碼的設定。(排除ID設定過程需4~8秒鐘的設定時間)
  5. 完成ID設定可使用。
  6. 如果滑鼠或鍵盤仍然無法正常運作，請將USB接收器從電腦的USB連接埠移出，然後再重複2到4安裝程序。

2.4GHz Cordless Mouse CH 2-6

### 2.4GHz Cordless Mouse

#### 使用警語

1. 經型式認證合格之低功率射頻電機，非經許可，公司、商號或使用者均不得擅自變更頻率、加大功率或變更原設計之特性及功能。
  2. 低功率射頻電機之使用不得影響飛航安全及干擾合法通信；經發現有干擾現象時，應立即停用，並改善至無干擾時方得繼續使用。前述合法通信，指依電信法規定作業之無線電通信，低功率射頻電機須忍受合法通信或工業、科學及醫療用電波輻射性電機設備之干擾。
- ※ 무선 키보드 / 마우스 세팅 방법
1. 최초 사용자
    - (1) 무선수신기를 PC의 USB 포트에 연결 합니다.
    - (2) 키보드와 마우스에 전원을 넣은후 파워스위치의 전원을 On 으로 전환 및 수신기의 LED 깜박거림을 확인 후 사용합니다.
    - \* 장시간 사용을 하지 않는 경우 절전을 위해 Deep Sleep 모드로 자동 전환되며, Deep Sleep 모드에서 Wake up 시 수신기와의 재연결 과정에서 약간의 Delay Time 이 생길 수 있습니다.
  2. 키보드 / 마우스 수동세팅 방법
    - ( 시스템 환경에 따라 초기 세팅값이 해제될 경우의 수동세팅 )
  - (1) 키보드 또는 마우스 바닥면의 링크트 버튼을 누릅니다. 연결이까지 10초 내외의 소요시간이 발생됩니다.
  - (2) 연결이 완료되면 수신기의 LED 깜박거림을 확인 후 사용합니다.
  3. 세팅 또는 제품사용의 불편함이 발생시 당사 고객센터로 문의하시면 친절히 안내해 드리겠습니다.
- \* 사용자 안내문 : 급기(가정용 발송용수신기제) 이 기기는 가정용(의 전자파적합기기로서 주로 가정에서 사용하는 것을 목적으로 하며, 모든 지역에서 사용할 수 있습니다.

아이락스 고객센터 : www.i-rocks.co.kr

2.4GHz Cordless Mouse CH 2-7

### 2.4GHz Cordless Mouse

#### Federal Communication Commission Interference Statement

This equipment has been tested and found to comply with the limits for a Class B digital device, pursuant to Part 15 of the FCC Rules. These limits are designed to provide reasonable protection against harmful interference in a residential installation. This equipment generates, uses and can radiate radio frequency energy and, if not installed and used in accordance with the instructions, may cause harmful interference to radio communications. However, there is no guarantee that interference will not occur in a particular installation. If this equipment does cause harmful interference to radio or television reception, which can be determined by turning the equipment off and on, the user is encouraged to try to correct the interference by one of the following measures:

- ①Reorient or relocate the receiving antenna.
- ②Increase the separation between the equipment and receiver.
- ③Connect the equipment into an outlet on a circuit different from that to which the receiver is connected.
- ④Consult the dealer or an experienced radio/TV technician for help.

FCC Caution: To assure continued compliance, (example - use only shielded interface cables when connecting to computer or peripheral devices). Any changes or modifications not expressly approved by the party responsible for compliance could void the user's authority to operate this equipment.

FCC Radiation Exposure Statement

This equipment complies with FCC radiation exposure limits set forth for an uncontrolled environment.

This device complies with Part 15 of the FCC Rules. Operation is subject to the following two conditions:

(1) This device may not cause harmful interference, and(2) this device must accept any interference received, including interference that may cause undesired operation.

2.4GHz Cordless Mouse CH 2-8

### 2.4GHz Cordless Mouse

#### i-rocks Technology Co., Ltd.

**Headquarter Office**  
12F, No. 190, Sec. 2, Zhongxing Rd., Xindian Dist., New Taipei City 23146, Taiwan R.O.C.  
Tel : +886-2-2911-3090  
Fax : +886-2-2914-1712  
www.i-rocks.com  
China Office  
Tel : +86-010-56130542  
www.i-rocks.cn  
i-Rocks Korea  
www.i-rocks.co.kr  
i-Rocks Malaysia  
57-A, Jalan SS21/11A, Damansara Utama, 47400, Petaling Jaya, Selangor, Malaysia  
Tel : +603-73392933  
www.i-rocks.com

IRK77RP

封底裏

封底