



CONTENTS

English Quick Installation Guide 1-1

RF-6570
RF-7550L

X-Slim 2.4GHz Cordless USB Keyboard and Laser Mouse Kit

Welcome

Congratulations on your purchase of an i-Rocks RF-6577L. The RF-6577L wireless keyboard and laser mouse combo uses the latest 2.4GHz RF technology to provide you with extended range and flawless communication between the keyboard, mouse, and your computer. It provides users the highest performance, quality, and convenience. The RF-6577L keyboard and mouse combo is a perfect choice in your digital life.

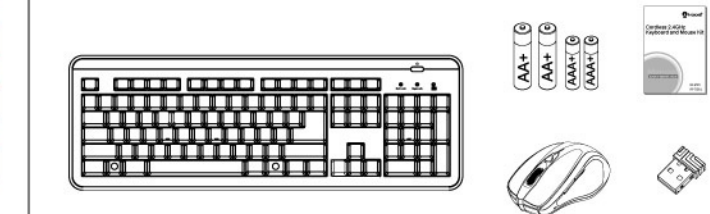
Package Contents

- Cordless keyboard X 1
- Cordless optical mouse X 1
- AAA size alkaline batteries X 2
- AA size alkaline batteries X 2
- USB Dongle Receiver X 1
- Quick installation guide X 1

System Requirement

Microsoft system Windows® 8 / Windows® 7 / Windows Vista®(SP2) / Windows® XP(SP3) or later

Available USB Port



Specification

Keyboard

- Interface : Wireless 2.4GHz
- Key number : 104 Keys(By language)
- Scissor-structure key-switches
- Battery low / Num Lock / Caps Lock indicator.
- Battery Life : Up to 12 Months(4hrs/day)
- Effectivity Distance : About 10 M
- Battery : AA X 2 PCS
- Dimension : 460(L) x 157(W) x 22(H) mm

Mouse

- Interface : Wireless 2.4GHz
- Key number : 6 keys
- Resolution : 800 / 1200 / 1600 DPI(Laser).
- Battery low indicator
- Power ON/OFF switch
- Battery Life : Up to 6 Months(4hrs/day)
- Effectivity Distance : About 10 M.
- Battery : AAA X 2 PCS
- Dimension : 106.0(L) x 68.0(W) x 39.5(H) mm

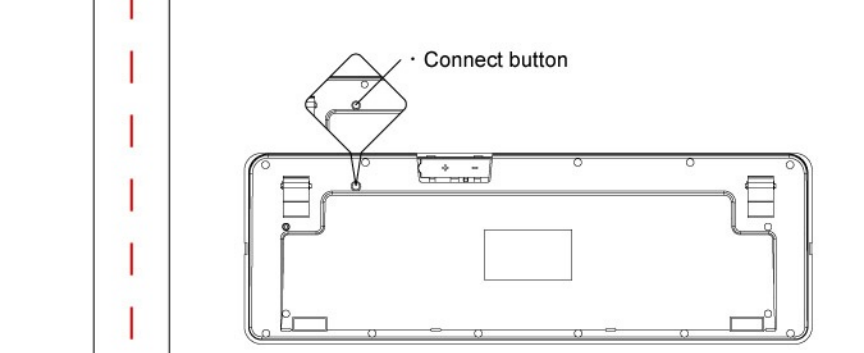
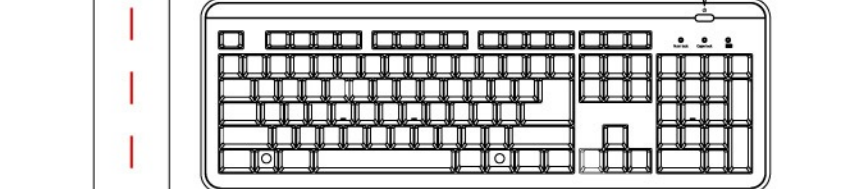
Dongle

- Interface : USB
- Dimension : About 19.1(L) x 14.65(W) x 6.1(H) mm

Product Information

1. Keyboard

- Computer Power OFF Button.
- Battery low.
- Indicate the Caps lock states.
- Indicate the Num lock states.



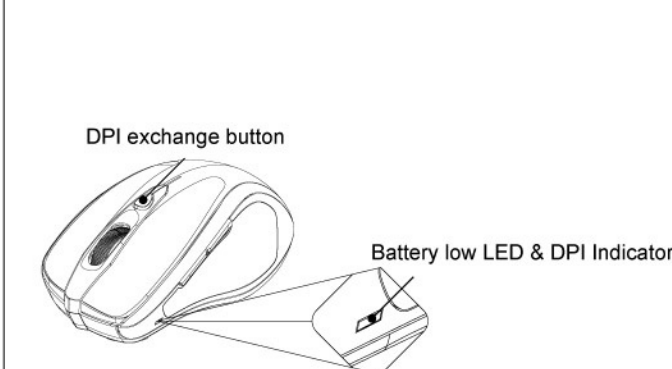
2. Mouse

DPI Resolution Exchange (1200/1600/800 DPI)

- Press DPI exchange button to change the resolution in a cycle.
- LED will flash to show the status of the resolution after pressing DPI exchange button.
- When turn off the power of mouse, it will resume 1200 DPI.

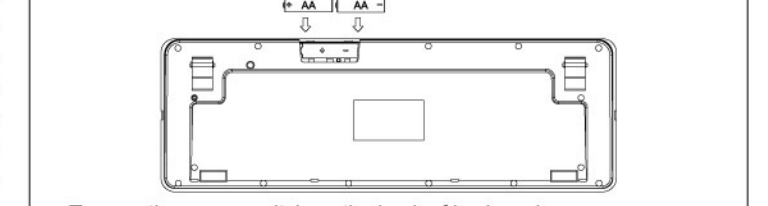
DPI Resolution : 1200 → 1600 → 800

LED Flash Time : Two → Three → One



Hardware Installation

- Set up the Keyboard (Put provided batteries into keyboard's batteries housing) Take the keyboard and make sure the 2 x AA alkaline batteries on the back are installed correctly, replace battery door. (Follow the polarity signs in the battery compartment.)



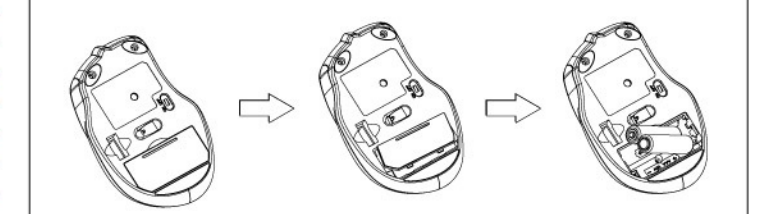
Turn on the power switch on the back of keyboard.

- Set up the Mouse (Put provided batteries into mouse's batteries housing.)

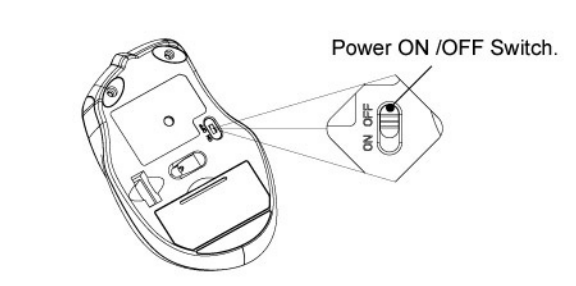
Open the battery housing cover under the cordless mouse's bottom side.

Install the provided batteries into the battery housing. (Please follow the polarity signs in the battery housing.)

Close the mouse battery housing cover.



Turn on the power switch on the back of keyboard.



- Easy automatic wireless connection : Connect the USB mini receiver to your computer by plugging in the receiver connector into your PC USB port, wait until automatic installation has completed.

4. Ready to use.

ID Setting

The wireless keyboard and mouse were already pairing OK before shipment. So the user does not need to do any pairing. Once need to re-pairing, please follow below steps to complete the necessary ID-Setting process for your cordless mouse/Keyboard and USB dongle receiver.

- Make sure the mouse and keyboard hardware installation is completed.

- Unplug and Plug again the USB dongle receiver into your computer's USB port.

- Waiting for the USB plug and play initialization completed.

- For mouse ID setting : Unplug the USB dongle then plug in the USB receiver, turn on the power, move your cordless mouse and close to the USB RF receiver within 30 cm press Mouse's "Middle Button" & "Right Button" and hold about 5 seconds

- For keyboard ID setting : Turn your cordless keyboard on and move your cordless keyboard and close to the USB dongle receiver within 30cm, then click the connect button of keyboard to start ID setting process. (It will take about 4~8 seconds waiting time)

- Ready to use

Step 4 and 5 should be finished in 2 minutes If the mouse or keyboard doesn't work properly, please remove the USB dongle receiver from computer's USB port, then repeat do step 4 or 5 step again.

Troubleshooting

What do I do if the cordless mouse or keyboard does not work?

Check the USB dongle receiver is connected to your computer's USB port.

Make sure the batteries are correctly installed into your cordless mouse and keyboard. (The positive (+) and negative (-) ends of each battery must match the polarity signs in the battery housing)

Make sure the batteries power qualities are good for use.

Make sure the ID Setting process is well completed.

Please change batteries immediately when the cordless mouse scroll wheel glow red or the cursor on screen does not move or move erratically.

Please change batteries immediately when the cordless keyboard / mouse battery low indicator light up.

Warning : Please remove batteries from your cordless mouse when not using for a long period of time.

Wireless performance : Metal object close to or in between the device. (Please remove objects.)

Mouse will have reduced tracking performance on very shiny or transparent surfaces.

All product names are trademarks or registered trademarks of their respective owners. Microsoft, Windows and Windows logo are trademarks or registered trademarks of Microsoft Corporation in the United States and/or other countries.

Federal Communication Commission Interference Statement

This equipment has been tested and found to comply with the limits for a Class B digital device, pursuant to Part 15 of the FCC Rules. These limits are designed to provide reasonable protection against harmful interference in a residential installation. This equipment generates, uses and can radiate radio frequency energy and, if not installed and used in accordance with the instructions, may cause harmful interference to radio communications. However, there is no guarantee that interference will not occur in a particular installation. If this equipment does cause harmful interference to radio or television reception, which can be determined by turning the equipment off and on, the user is encouraged to try to correct the interference by one of the following measures:

- Reorient or relocate the receiving antenna.
- Increase the separation between the equipment and receiver.
- Connect the equipment into an outlet on a circuit different from that to which the receiver is connected.
- Consult the dealer or an experienced radio/TV technician for help.

FCC Caution: To assure continued compliance, (example - use only shielded interface cables when connecting to computer or peripheral devices). Any changes or modifications not expressly approved by the party responsible for compliance could void the user's authority to operate this equipment.

This device complies with Part 15 of the FCC Rules. Operation is subject to the following two conditions:
(1) This device may not cause harmful interference, and(2) this device must accept any interference received, including interference that may cause undesired operation.

*사용자안내문 : B급기기 (가정용 방송통신기자재)
이 기기는 가정용(B급) 전자파직합기기로서 주로 가정에서 사용하는 것을 목적으로 하며, 모든 지역에서 사용할 수 있습니다.



i-Rocks Technology Co., Ltd.

Headquarter Office

12F, No. 190, Sec. 2, Zhongxing Rd., Xindian Dist., New Taipei City 23146, Taiwan R.O.C.

Tel : +886-2-2911-3080

Fax : +886-2-2914-1712

www.i-rocks.com

China Office

Tel : +86-010-56130542

www.i-rocks.cn

i-Rocks Korea

www.i-rocks.co.kr

i-Rocks Malaysia

57-A, Jalan S521/1A, Damansara Utama, 47400, Petaling Jaya, Selangor, Malaysia

Tel : +603-77339233

www.i-rocks.com

Specifications and pictures are subject to change without notice.
All brand names and products are registered trademarks of their respective companies.