

FCC CFR47 PART 18 SUBPART C

ISM EQUIPMENT

TEST REPORT

FOR

MICROWAVE OVEN

**Model: JES737WM, JES737WM01, JES737WM02, JES737WK,
JES0735DPBB, JES0735DPWW and JES0738DPWW
(Testing case: JES737WM02)**

Magnetron Model: Galanz, M24FB-210A

Brand Name: GE

Test Report No.: 09CA7020-03

FCC ID: UH7020003

Prepared for

GUANGDONG GALANZ ENTERPRISE (GROUP)CO.,LTD.

25 RONGGUI NAN ROAD, RONGGUI SHUNDE, GUANGDONG

P.R.C.528305

ACCORDING TO

FCC PART 18 INDUSTRIAL, SCIENTIFIC AND MEDICAL EQUIPMENT

&

FCC/0ST MP-5(1986) FCC METHODS OF MEASUREMENTS OF RADIO

NOISE EMISSION FROM INDUSTRIAL, SCIENTIFIC AND MEDICAL

EQUIPMENT

Prepared By: Vegia Huang

Reviewed By: Louis Lu

QC Manager: Valley Wang

Test Report Released By _____

Name



24/05/2009 _____

Date

List Attached Files

Exhibit Type	File Description	File Name
Test report	Test report	UHWJES737WM -Test report .pdf
Operation Description	Operation Description	UHWJES737WM -operationdescription .pdf
External Photos	External Photos	UHWJES737WM -external photos
Internal Photos	Internal Photos	UHWJES737WM -Internal photos
Block Diagram	Block Diagram	UHWJES737WM -block diagram.pdf
Schematics	Schematics	UHWJES737WM -schematics.pdf
ID Label/ Location	ID Label/ Location	UHWJES737WM -label & location.pdf
User Manual	User Manual	UHWJES737WM -user manual .pdf
Test setup Photos	Test setup Photos	UHWJES737WM -test setup photos

Test Location

Tests performed at Galanz in a certified Ansi Semi-Anechoic Chamber and Shielded Room.

Test Site Location

EMC Laboratory

Guangdong Galanz Enterprises Co., Ltd

25 South Ronggui Rd., Shunde, Foshan, Guangdong, China.

Tel: 86-757-23612785

Fax: 86-757-23612537

In compliance with the site registration requirements of section 2.948 of the FCC rules to perform EMI measurements for the general public.

FCC Registration Number: 580210

Table of Contents

GOVERNMENT DISCLAIMER NOTICE-----	4
REPRODUCTION CAUSE-----	4
OPINIONS AND INTERPRETATIONS-----	4
STATEMENT OF MEASUREMENT UNCERTAINTY-----	4
ADMINISTRATIVE DATA- -----	5
EUT DESCRIPTION-----	5
TYPE OF DERIVER-----	6
TEST SUMMARY-----	7
LORD FOR MWO-----	8
EQUIPMENT MODIFICATION-----	8
EUT SAMPLE PHOTOS FOR MODEL-----	9
TEST SYSTEM DETAILS-----	15
CONFIGURATION OF TESTED SYSTEM-----	16
ATTACHMENT 1- RADIATION HAZARD TEST-----	17
ATTACHMENT 2-INPUT POWER MEASUREMENT-----	20
ATTACHMENT 3-RF OUTPUT POWER MEASUREMENT-----	23
ATTACHMENT 4- OPERATING FREQUENCY MEASUREMENT-----	26
ATTACHMENT 5-CONDUCTED EMISSION TEST RESULTS-----	29
ATTACHMENT 6-RADIATED EMISSION TEST RESULTS-----	34

GOVERNMENT DISCLAIMER NOTICE

When government drawing, specification or other data are used for any purpose other than in connection with a definitely related government procurement operation, the United States government thereby incurs no responsibility nor any obligation whatsoever, and the fact that the Government might have formulated, furnished or in any way supplied the said drawing, specification or other data, is not to be regarded implication or otherwise in any manner licensing the holder or any other person or corporation, or conveying any rights to permission to manufacture, use or sell patented invention that may in any way be related thereto. This report must not be used to claim product endorsement by NVLAP or any agency of the U.S. Government.

Reproduction Clause

Any reproduction of the document must be done in full. No single part of the document may be reproduced without permission from ATC-Lab Guangdong Group. 205# Yingfeng Building, Ronggui , China.

Opinions and Interpretations

This test report relates to the above mentioned equipment under test (EUT). Without permission of ATC-Lab Guangdong Group, this report is not permitted to be duplicated in extracts. This test report does not entitle to carry any test mark on this or similar products. The manufacturer has sole responsibility of continued compliance of the device.

Statement of Measurement Uncertainty

The data and results referenced in the document are true and accurate. The reader is cautioned that there may be errors within the calibration limits of the equipment and facilities that can account for a nominal measurement error. Furthermore, component and process variability of devices similar to that tested may result in additional deviation.

Administrative Data

Test Sample Microwave oven
Model Numbers JES737WM,JES737WM01,JES737WM02,JES737WK,
JES0735DPBB, JES0735DPWW and JES0738DPWW
(Testing case: JES737WM02)
Brand Name GE
Date Tested Apr 01, 2009—Apr 02, 2009
Applicant Guangdong Galanz Enterprises Co., Ltd.
25 ronggui nan Rd., Shunde, Foshan, Guangdong , China
Telephone 86-757-23612785
Fax 86-757-23612537
Manufacturer Guangdong Galanz Enterprises Co., Ltd.
25 ronggui nan Rd., Shunde, Foshan, Guangdong , China

EUT DESCRIPTION

Guangdong Galanz Enterprises Co., Ltd. Model tested JES737WM02
(Refer to the EUT in this report) is a Microwave Oven.

Specifications:

Power consumption	120Vac 60Hz, 1200W
Output	700W
Operation frequency	2450Hz
Magnetron brand	Galanz
Magnetron number	M24FB-210A
Outside dimensions(HxWxD)	10.9*18.3*13.9 in.
Cavity dimensions(HxWxD)	8.6*11.7*12.8 in.
Capacity	0.7 cu.ft
Cooking uniformity	Turntable System
Net weight	Approx.28.9lbs.

Type of Deriver

The series products, model names: JES737WM, JES737WM01, JES737WM02, JES737WK , JES0735DPBB, JES0735DPWW and JES0738DPWW, only model names and appearance are different. We select JES737WM02 to test.

Test Summary

The Electromagnetic Compatibility Requirements on model tested JES737WM02 for this test is stated below. All results listed in this report relate exclusively to this above mentioned model as the Equipment under Test. This report confers no approval or endorsement upon any other component, host or sub-system used in the test set-up

Emission Tests				
Specifications	Description	Test results	Test point	Remark
FCC Part 18:2004 FCC/OST MP-5:1986 ANSI C63.4:2003	Radiation Hazard Measurement	Passed	Enclosure	Attachment 1
FCC Part 18:2004 FCC/OST MP-5:1986 ANSI C63.4:2003	Input Power Measurement	Passed	AC Input Port	Attachment 2
FCC Part 18:2004 FCC/OST MP-5:1986 ANSI C63.4:2003	RF Output Power Measurement	Passed	EUT	Attachment 3
FCC Part 18:2004 FCC/OST MP-5:1986 ANSI C63.4:2003	Operating Frequency Measurement	Passed	EUT	Attachment 4
FCC Part 18:2004 FCC/OST MP-5:1986 ANSI C63.4:2003	Conducted Emission	Passed	AC Input Port	Attachment 5
FCC Part 18:2004 FCC/OST MP-5:1986 ANSI C63.4:2003	Radiated Emission	Passed	Enclosure	Attachment 6

Load for Microwave Ovens

For all measurements the energy developed by the oven was absorbed by a dummy load consisting of a quantity of tap water in a beaker. If the oven was provided with a shelf or other utensil support, this support was in its initial normal position. For ovens rated at 1000 watts or less power output, the beaker contained quantities of water as listed in the following subparagraphs, for ovens rated at more than 1000 watts output, each quantity was increased by 50% for each 500 watts or fraction thereof in excess of 1000 watts, additional beakers were used if necessary

- **Load for power output measurement: 1000 milliliters of water in the beaker located in the center of the oven.**
- **Load for frequency measurement: 1000 milliliters of water in the beaker located in the center of the oven.**
- **load for measurement of radiation on second and third harmonic : Two loads, one of 700 and the other of 300 milliliters, of water are used , Each load is tested both with the beaker located in the center of the oven and with it in the right front corner.**
- **Load for all other measurements: 700 milliliters of water, with the beaker located in the center of the ovens**

Equipment Modification

Any modifications installed previous to testing by Guangdong Galanz Enterprises Co., Ltd will be incorporated in each production model sold or leased in United States

EUT Sample Photos for model _____



Front and top view



Door open view



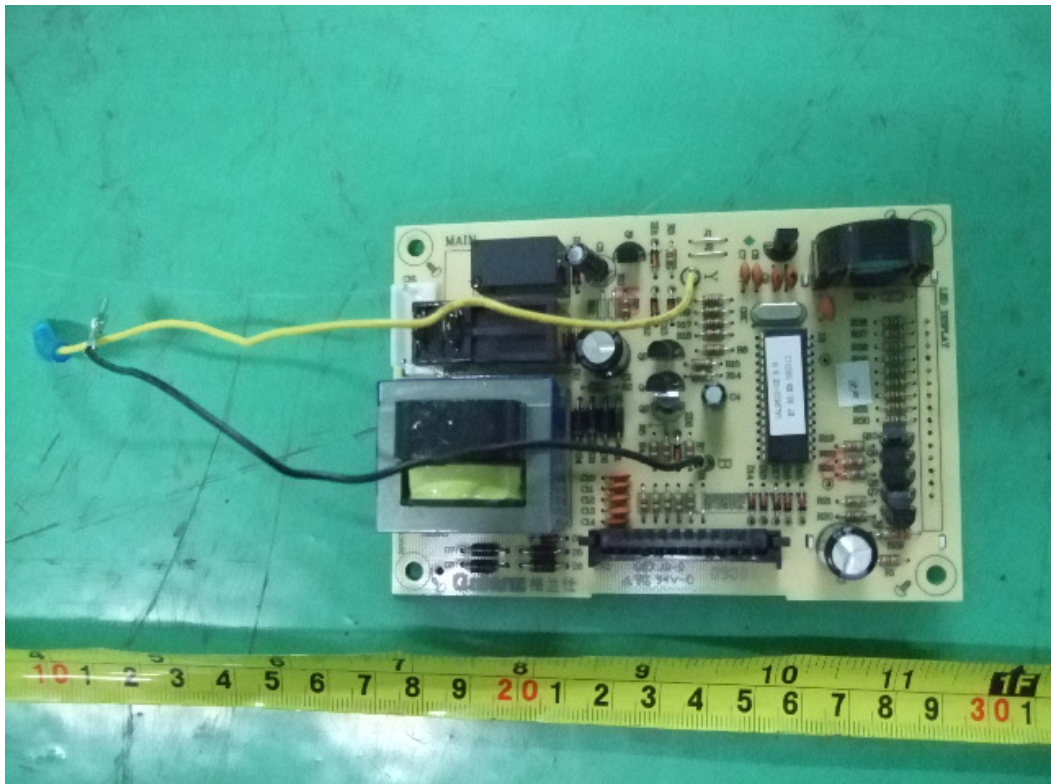
Rear View of EUT



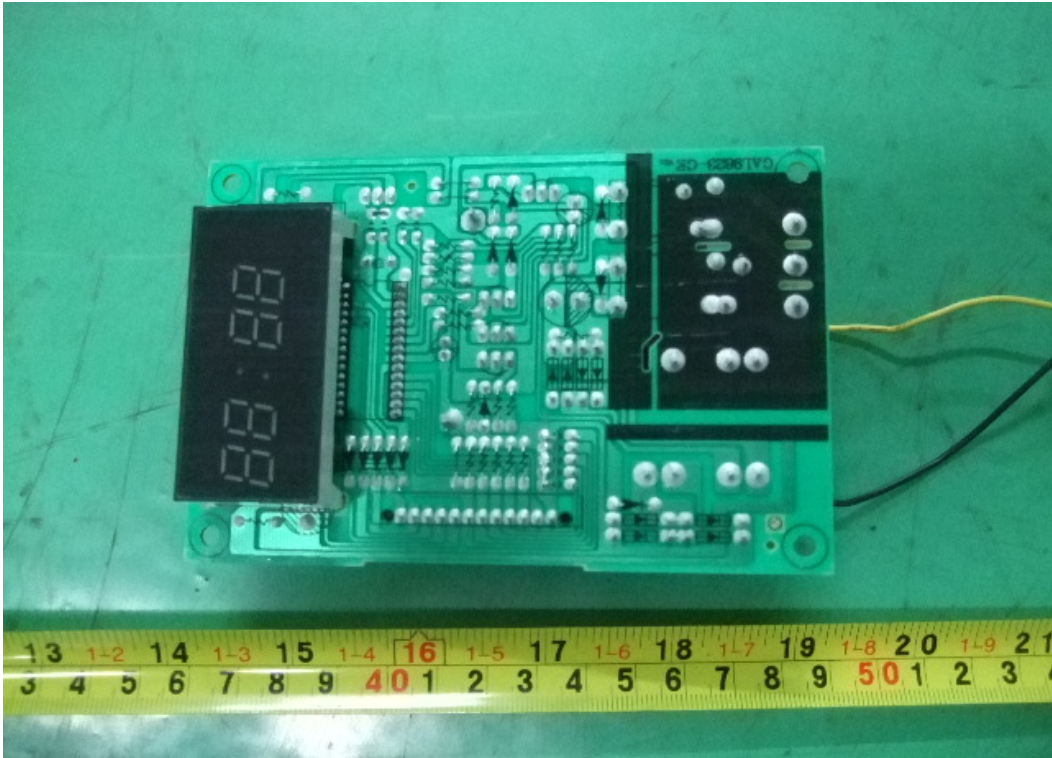
Uncovered View from right side



View of Magnetron



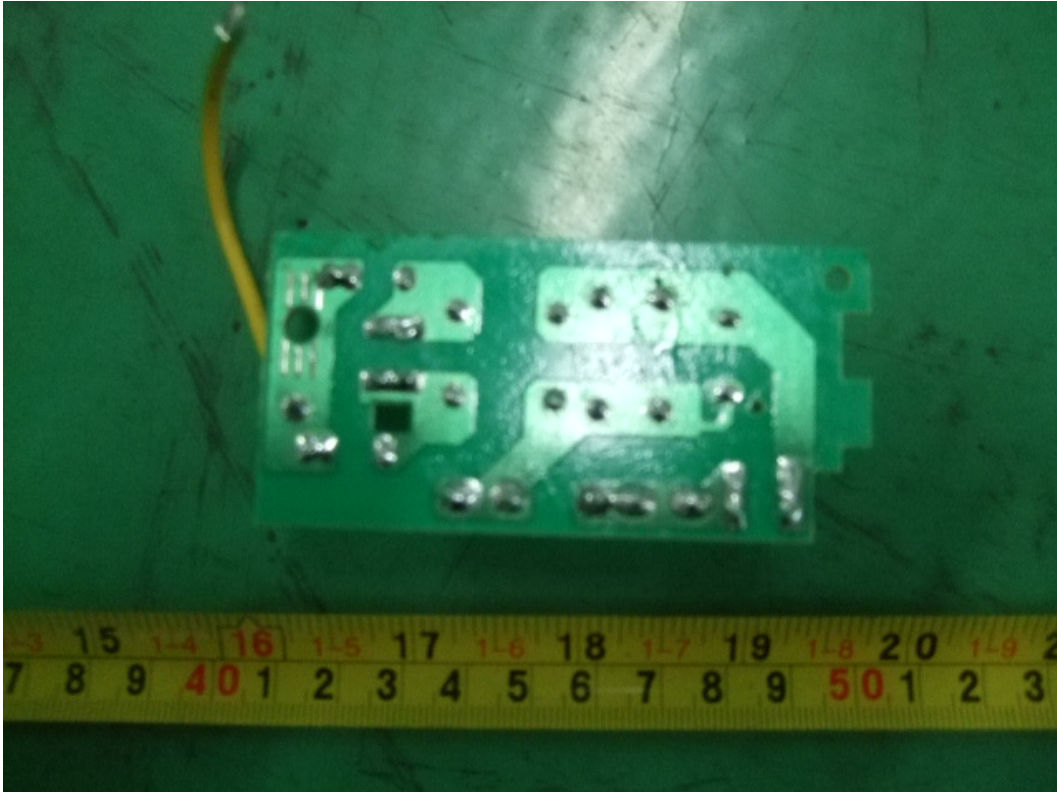
Front view of Main board



Back view of Main board



Front View of AC power filter board

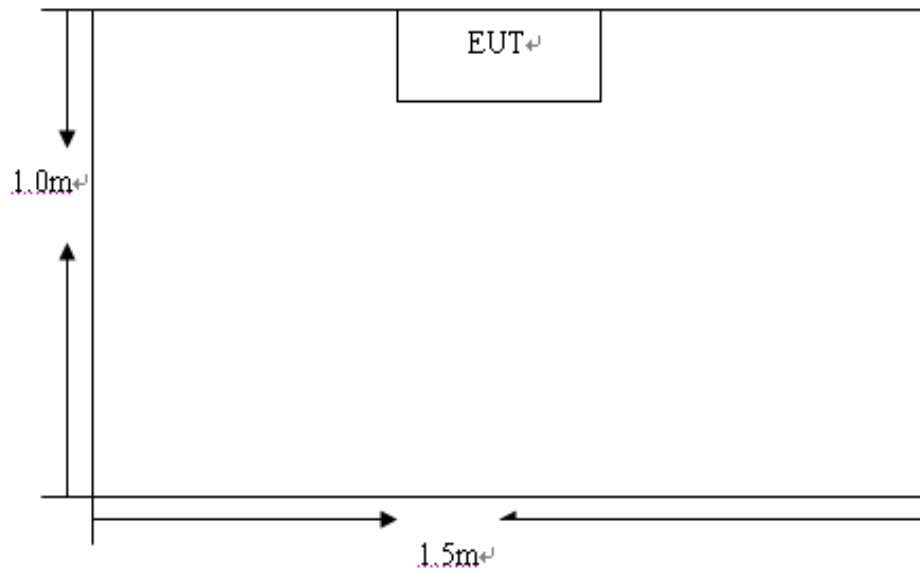


Back of View AC power filter board

Test System Details

EUT					
Model Numbers	JES737WM, JES737WM01, JES737WM02, JES737WK , JES0735DPBB, JES0735DPWW and JES0738DPWW,				
Model Tested	JES737WM02				
Description	Microwave Oven				
Manufacturer	Guangdong Galanz Enterprises Co., Ltd				
Support Equipment					
N/A					
Cable Description					
Description	From	To	Length Meters	Shielded Y/N	Ferrite Y/N
Power cord	EUT	Plug	1.00	N	N

Configuration of Tested System



ATTACHMENT 1-RADIATION HAZARD TEST

Client: Guangdong Galanz Enterprises Co Ltd		Test Standard: FCC Part 18
Model Numbers: JES737WM, JES737WM01, JES737WM02, JES737WK , JES0735DPBB, JES0735DPWW and JES0738DPWW		Product: Microwave Oven
Model Tested: JES737WM02		EUT Designation: Home or Office
Temperature: 23°C		Humidity: 48%RH
ATM Pressure: 101kPa		Grounding: Through AC power cord
Tested By: Vegia Huang		Date of Test: Apr 01, 2009
Test Reference	ANSI C63.4: 2003, FCC/OST MP-5:1986	
Test Procedure	The EUT was set up according to the FCC MP-5 and FCC Part 18 for Radiation Hazard Measurement. The measurement was using a microwave leakage meter to measure the Radiation leakage in the as-received condition with the oven door closed. A 1000ml water load in a beaker was located in the center of the oven and the Microwave oven was set to maximum power. While the oven operating, the microwave meter will check the leakage and then record the maximum leakage	
Tested Range	N/A	
Test Voltage	120VAC/60Hz	
Results	<p>There was no microwave leakage exceeding a power level of 0.03mW/cm² observed at any point 5cm or more from the external surface of the oven.</p> <p>A maximum of 1.0 mW/cm² is allowed in accordance with the applicable FCC standards. Hence, microwave leakage in the as-received condition with the oven door closed was below the maximum allowed.</p> <p>The test results relate only to the equipment under test provided by client.</p>	
Changes or Modifications	There were no modifications installed by Galanz test personnel	
M. Uncertainty	0.01 mW/cm ²	

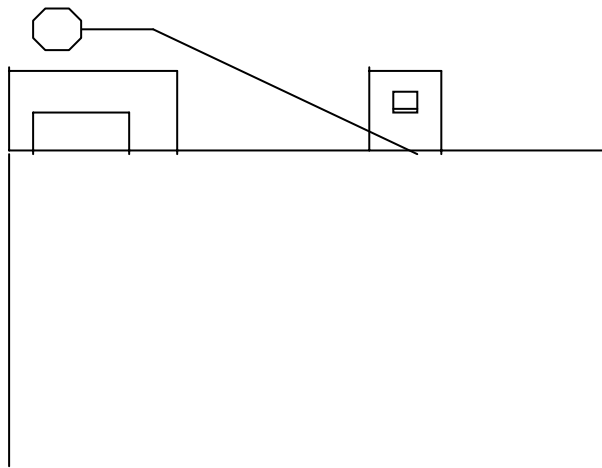
Test Equipment List

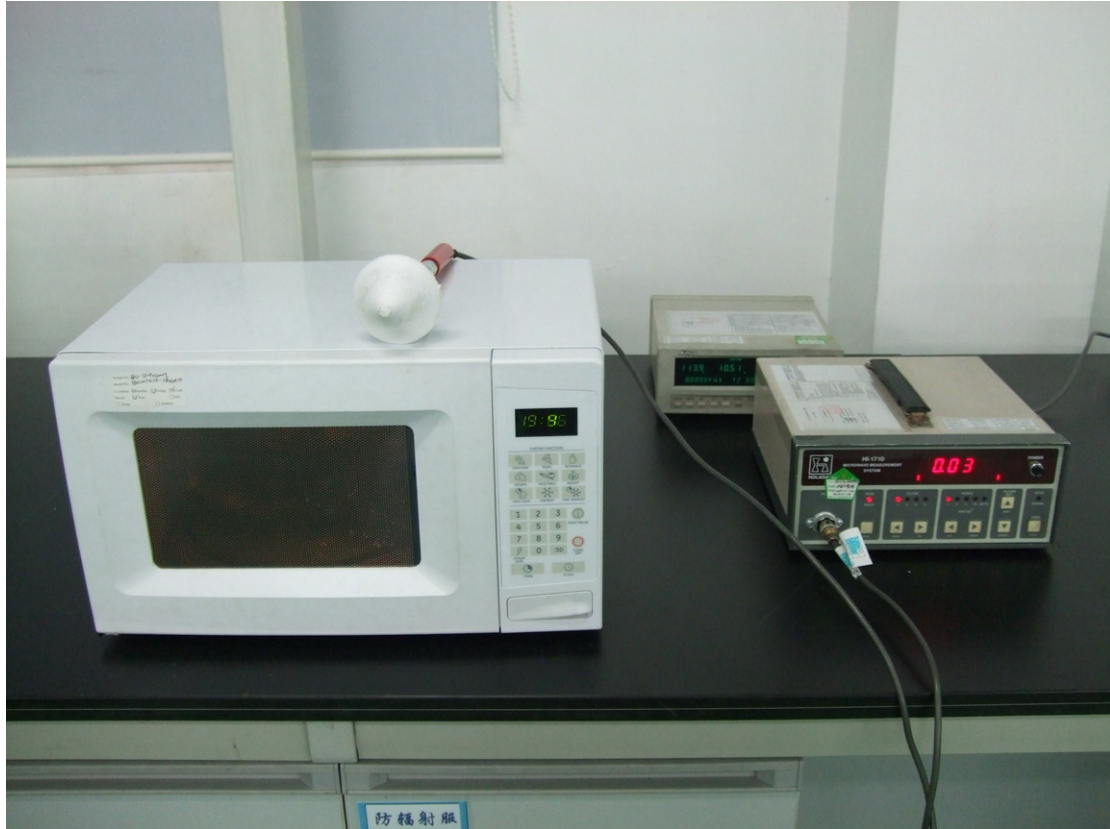
Test Equipment	Manufacturer	Model	Serial No.	Last Cal.	Cal. Due
Field Monitor	ETS	AR FM5004	A0304252	2009-01-22	2010-01-21
Electric Field probe	ETS	AR FP6001	A0304302	2009-01-22	2010-01-21

Note: All testing were performed using internationally recognized standard. All test instruments were calibrated and traceable to the National Institute of Standards and Technology.

Radiation Hazard Test Set-up

Microwave Leakage Tester





Radiation Hazard Test Setup

ATTACHMENT 2-INPUT POWER MEASUREMENT

Client: Guangdong Galanz Enterprises Co Ltd		Test Standard: FCC Part 18
Model Numbers: JES737WM, JES737WM01, JES737WM02, JES737WK , JES0735DPBB, JES0735DPWW and JES0738DPWW		Product: Microwave Oven
Model Tested: JES737WM02		EUT Designation: Home or Office
Temperature: 23°C		Humidity: 48%RH
ATM Pressure: 101kPa		Grounding: Through AC power cord
Tested By: Vegia Huang		Date of Test: Apr 01, 2009
Test Reference	ANSI C63.4: 2003 , FCC/OST MP-5:1986	
Test Procedure	The EUT was set up according to the FCC MP-5 and 18 for input power measurement, The input power and current was measured using a power analyzer. A 1000ml water load in a beaker was located in the center of the oven and the Microwave oven was set to maximum power, while the oven is operating, use a voltmeter and an ampere-meter to test the AC input voltage and current.	
Tested Range	N/A	
Test Voltage	120VAC/60Hz	
Results	Based on the measured input power , the EUT was found to be operating within the intended specifications The test results relate only to the equipment under test provided by client	
Changes or Modifications	There were no modifications installed by Galanz test personnel	
M. Uncertainty	±5W	

Test Data

Input Voltage Vac/Hz	Input Current amps	Measured Input power(watt)	Rated input power(watt)
120V/60Hz	10.11	1203	1200

Test Equipment List

Test equipment	Manufacturer	Model	Serial No.	Last Cal.	Cal. Due
Power frequency test system	Ainuo	AN8716PX	058704273	2008-07-06	2009-07-06

Note: All testing were performed using internationally recognized standard. All test instruments were calibrated and traceable to the National Institute of Standards and Technology.



Input Power Test Setup

ATTACHMENT 3-RF OUTPUT POWER MEASUREMENT

Client: Guangdong Galanz Enterprises Co Ltd	Test Standard: FCC Part 18
Model Numbers: JES737WM, JES737WM01, JES737WM02, JES737WK , JES0735DPBB, JES0735DPWW and JES0738DPWW	Product: Microwave Oven
Model Tested: JES737WM02	EUT Designation: Home or Office
Temperature: 23°C	Humidity: 48%RH
ATM Pressure: 101kPa	Grounding: Through AC power cord
Tested By: Vegia Huang	Date of Test: Apr 01, 2009
Test Reference	ANSI C63.4: 2003 , FCC/OST MP-5:1986
Test Procedure	<p>The EUT was set up according to the FCC MP-5 and 18 for RF power measurement, The Caloric method was used to determine maximum RF output power.</p> <ol style="list-style-type: none"> 1) A 1000ml water load in a beaker is located in the center of the oven. 2) Measure and record the initial temperature of the 1000ml water load. 3) Start and keep the oven operating at maximum output power for 120 seconds. 4) At the end of the 120 seconds, measure and record the final temperature of the 1000ml water load. 5) Calculate the RF output power <p>$RF\ Output\ Power\ (W) = 4.2 \times 1000 \times (Final\ Temp - Initial\ Temp) / 120$</p>
Tested Range	N/A
Test Voltage	120VAC/60Hz
Results	<p>RF output power =637W</p> <p>The test results relate only to the equipment under test provided by client</p>
Changes or Modifications	There were no modifications installed by Galanz test personnel.
M. Uncertainty	±0.3°C

Test Data

Quality of water(ml)	Starting temperature(°C)	Final temperature(°C)	Elapsed time (seconds)	RF output power(watt)
1000	18.4	36.6	120	637

Test Equipment List

Test equipment	Manufacturer	Model	Serial No.	Last Cal.	Cal. Due
Data Acquisition	TES	TES-1310	021108782	2009-04-04	2010-04-03

Note: All testing were performed using internationally recognized standard. All test instruments were calibrated and traceable to the National Institute of Standards and Technology.



RF Output Power Test Set-up

ATTACHMENT 4-OPERATING FREQUENCY MEASUREMENT

Client: Guangdong Galanz Enterprises Co Ltd	Test Standard: FCC Part 18
Model Numbers: JES737WM, JES737WM01, JES737WM02, JES737WK , JES0735DPBB, JES0735DPWW and JES0738DPWW	Product: Microwave Oven
Model Tested: JES737WM02	EUT Designation: Home or Office
Temperature: 22°C	Humidity: 48%RH
ATM Pressure: 100.8kPa	Grounding: Through AC power cord
Tested By: Vegia Huang	Date of Test: Apr 02, 2009
Test Reference	ANSI C63.4: 2003 , FCC/OST MP-5:1986
Test Procedure	<p>The EUT was set up according to the FCC MP-5 and 18 for Operating Frequency measurement</p> <p>1) The Variation of frequency with time</p> <p>The operating frequency was measured using a spectrum analyzer, starting with EUT at room temperature, a 1000ml water load in a breaker was located in the center of the oven, set a spectrum analyzer with antenna at 3 meters distance from the oven and oven was operated at maximum output power, The fundamental operating frequency was monitored until the water load was reduced to 20 percent of the original load.</p> <p>2) The variation of frequency with Line Voltage.</p> <p>The operating frequency was measured using a spectrum analyzer. The EUT was operated/ warmed by at least 10 minutes of use with a 1000ml water load at room temperature at the beginning of the test. Then the operating frequency was monitored as the input voltage was varied between 80 and 125 percent of the nominal rating</p>
Tested Range	2450 ± 50MHz
Test Voltage	120VAC/60Hz
Results	Refer to following pages for details of the variation in operating frequency with time & line voltage measurement
Changes or Modifications	There were no modifications installed by Galanz test personnel.
M. Uncertainty	Freq. ± 10kHz

Test data

Variation in Operating Frequency with Time

Minimum Frequency(MHz)	Maximum Frequency(MHz)
2446.8	2469.5

Variation in Operating Frequency with Line Voltage

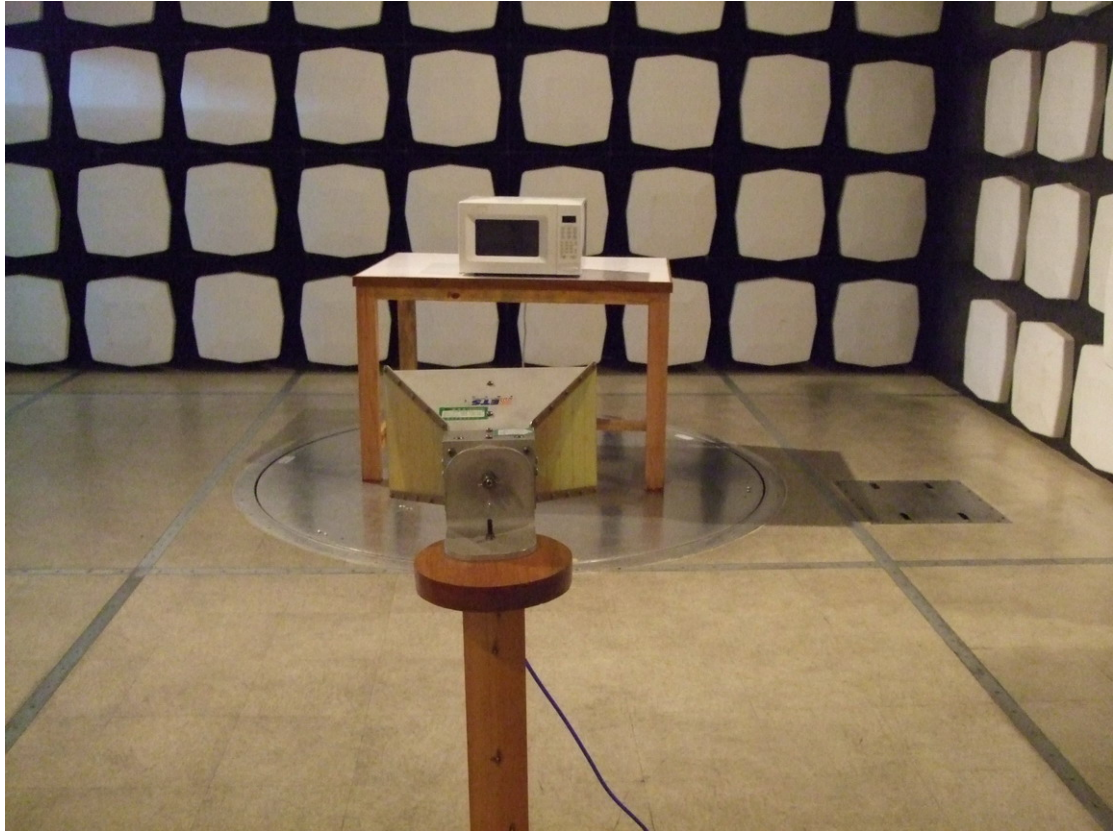
Minimum Frequency(MHz)	Maximum Frequency(MHz)
2450.8	2462.5

Note: Line voltage varied from 96Vac to 150Vac

Test Equipment List

Test equipment	Manufacturer	Model	Serial No.	Last Cal.	Cal. Due
Horn Antenna	ETS	3115	6587	2008-08-02	2010-08-02
Spectrum Analyzer	R&S	FSP30	100755	2008-11-03	2009-11-02
3m Anechoic chamber	ETS	N/A	N/A	2007-05-23	2009-05-23

Note: All testing were performed using internationally recognized standard. All test instruments were calibrated and traceable to the National Institute of Standards and Technology.



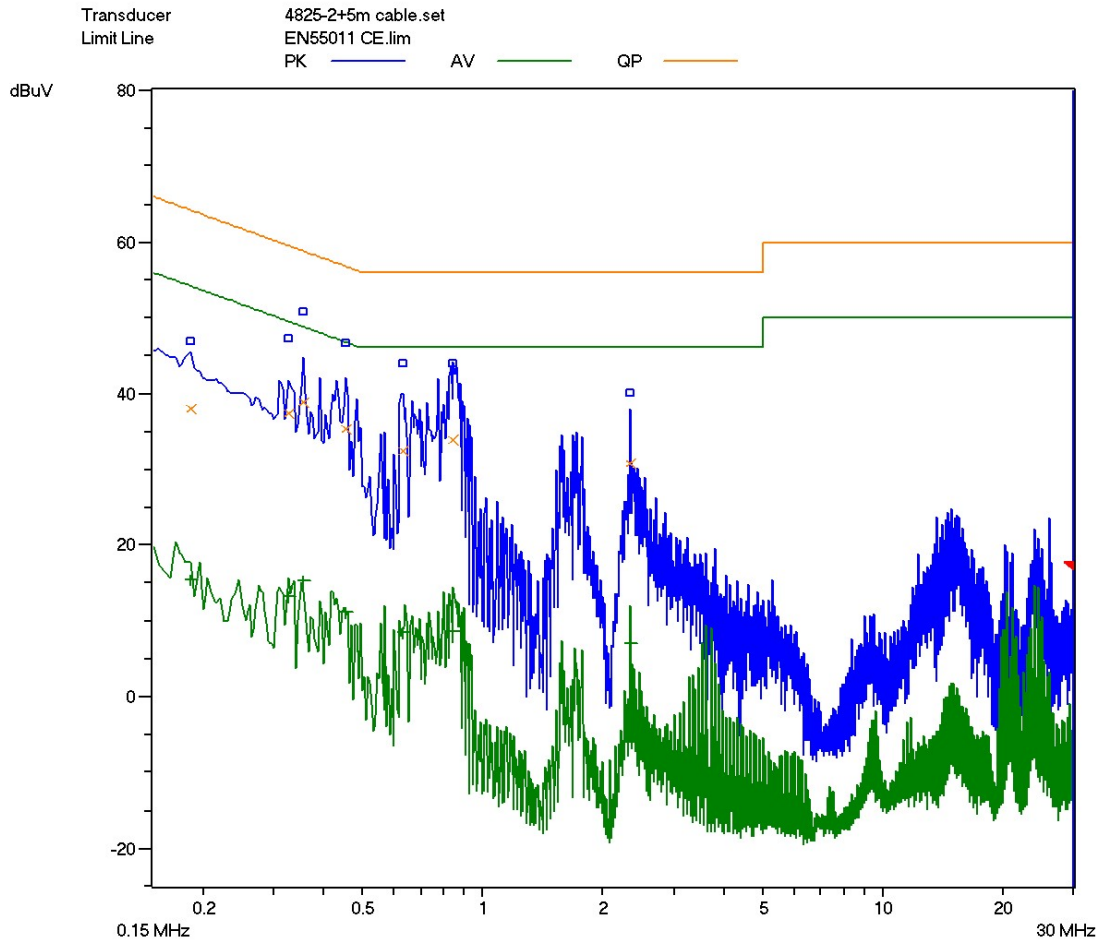
Operating Frequency Test Set-up

ATTACHMENT 5-CONDUCTED EMISSION TEST RESULTS

Client: Guangdong Galanz Enterprises Co Ltd		Test Standard: FCC Part 18
Model Numbers: JES737WM, JES737WM01, JES737WM02, JES737WK , JES0735DPBB, JES0735DPWW and JES0738DPWW		Product: Microwave Oven
Model Tested: JES737WM02		EUT Designation: Home or Office
Temperature: 23°C		Humidity: 47%RH
ATM Pressure: 100.8kPa		Grounding: Through AC power cord
Tested By: Vegia Huang		Date of Test: Apr 02, 2009
Test Reference	ANSI C63.4: 2003 , FCC/OST MP-5:1986	
Test Procedure	The EUT was set up according to the guideline of ANSI C63.4:2003 & FCC MP-5 for conducted emission, The measurement was using a AMN on each line and an EMI receiver peak scan was made at the frequency measurement range , the six highest significant peak were then marked , and these signals were then quasi peaked and averaged. The frequency range investigated was from 150kHz to 30MHz	
Tested Range	150kHz to 30MHz	
Test Voltage	120VAC/60Hz	
Results	The EUT meets the requirements of test reference for conducted Emission on line N by 19.6dBuV of Quasi-peak detector and on line L by 33.5dBuV of Average detector.	
Changes or Modifications	There were no modifications installed by Galanz test personnel.	
M. Uncertainty	±2.5dB	

Type Microwave Oven
 EUT / Ser.No. GAL-SE090320003
 Manufacturer Galanz
 Condition Full Power (Microwave Mode)

Frequency Range(s) Range 1
 Start Frequency 150 kHz
 Stop Frequency 30 MHz
 Step Frequency 5 kHz
 Attenuator Auto
 Detector (Pre) AV CISPR
 IF Bandwidth (Pre) 9 kHz
 Measure Time (Pre) 10 ms
 Detector (Final) QP
 IF Bandwidth (Final) 9 kHz
 Measure Time (Final) 1 s
 Sub Ranges (Final) 20

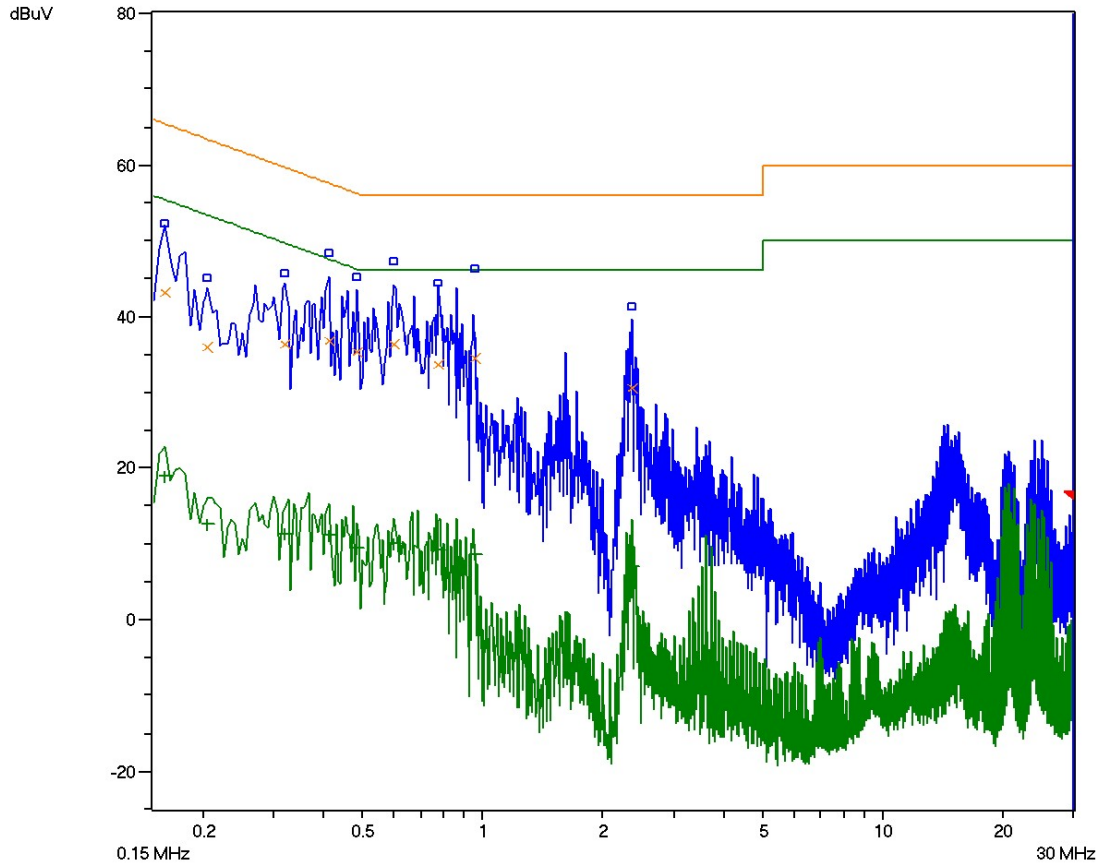


Line L Conducted Emission Graph

Type Microwave Oven
 EUT / Ser.No. GAL-SE090320003
 Manufacturer Galanz
 Condition Full Power (Microwave Mode)

Frequency Range(s) Range 1
 Start Frequency 150 kHz
 Stop Frequency 30 MHz
 Step Frequency 5 kHz
 Attenuator Auto
 Detector (Pre) AV CISPR
 IF Bandwidth (Pre) 9 kHz
 Measure Time (Pre) 10 ms
 Detector (Final) QP
 IF Bandwidth (Final) 9 kHz
 Measure Time (Final) 1 s
 Sub Ranges (Final) 20

Transducer 4825-2+5m cable.set
 Limit Line EN55011 CE.lim
 PK AV QP



Line N Conducted Emission Graph

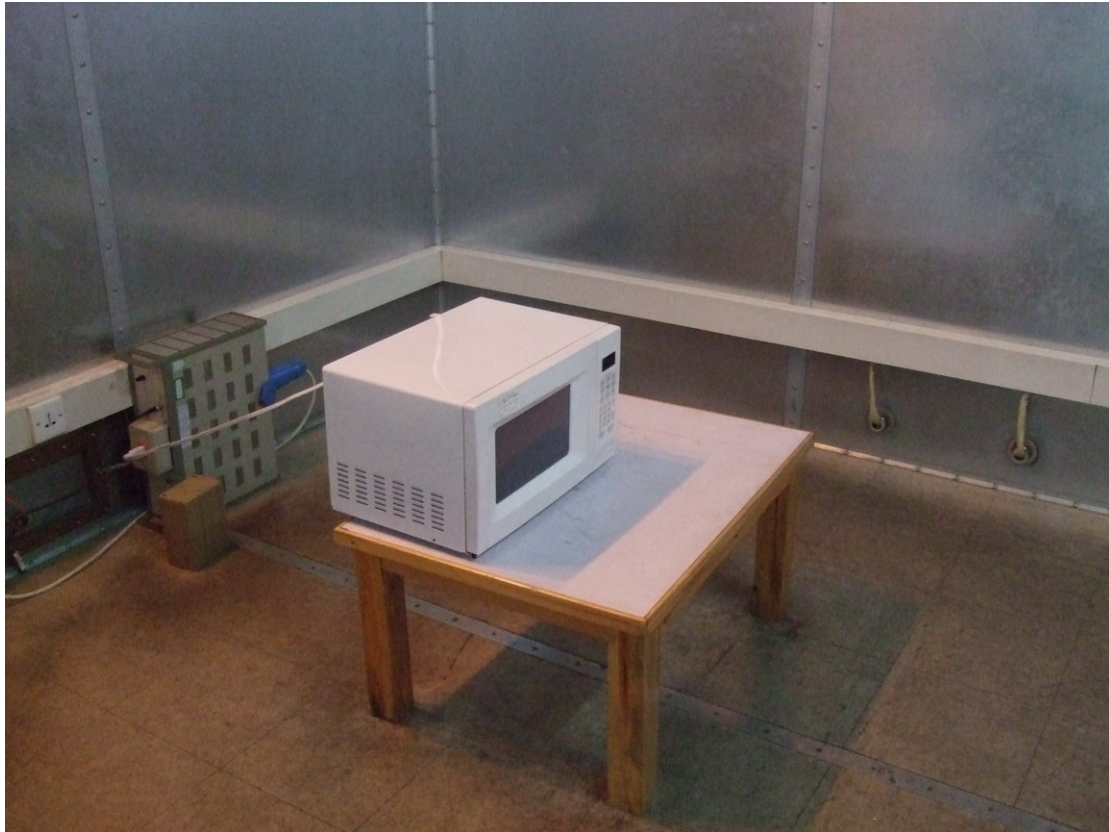
Test Data

Line	Frequency MHz	Corrected Reading(QP) dBuV	Corrected Reading(AV) dBuV	QP limit dBuV	AV limit dBuV
L	0.3250	37.4	13.3	59.6	49.6
L	0.3550	38.9	15.3	58.8	48.8
L	0.8450	34.0	8.7	56.0	46.0
N	0.1600	43.2	18.9	65.4	55.4
N	0.5950	36.4	10.1	56.0	46.0
N	0.9600	34.5	8.6	56.0	46.0

Test Equipment List

Test equipment	Manufacturer	Model	Serial No.	Last Cal.	Cal. Due
EMI Receiver	SCHAFFNER	SMR4503	44	2008-07-08	2009-07-08
LISN	ETS	4825/2	1161	2008-07-08	2009-07-08
Shielding Room	ETS	N/A	N/A	2008-05-30	2009-05-30

Note: All testing were performed using internationally recognized standard. All test instruments were calibrated and traceable to the National Institute of Standards and Technology.



Conducted Emission Test Set-up

ATTACHMENT 6-RADIATED EMISSION TEST RESULTS

Client: Guangdong Galanz Enterprises Co Ltd	Test Standard: FCC Part 18
Model Numbers: JES737WM, JES737WM01, JES737WM02, JES737WK , JES0735DPBB, JES0735DPWW and JES0738DPWW	Product: Microwave Oven
Model Tested: JES737WM02	EUT Designation: Home or Office
Temperature: 23°C	Humidity: 48%RH
ATM Pressure: 100.8kPa	Grounding: Through AC power cord
Tested By: Vegia Huang	Date of Test: Apr 02, 2009
Test Reference	ANSI C63.4: 2003 , FCC/OST MP-5:1986
Test Procedure	<p>The EUT was set up according to the guidelines of ANSI C63.4: 2003 & FCC MP- 5 for radiated emissions. Microwave oven was placed on a 1m*1.5m nonconductive table. The top of the table is 0.8 m above the ground. The table is placed on a flush mounted metal turntable.</p> <p>An EMI receiver peak scan was made at the frequency measurement range (pre- scan) in an Anechoic chamber. Signal discrimination was then performed and the significant peaks marked. All data was recorded in Quasi-peak detection mode from 30 MHz to 1GHz and average detector mode above 1GHz.</p> <p>The following data lists the significant emission frequencies, measured levels, correction factors (including cable and antenna correction factors), and the corrected readings against the limits. Explanation of the Correction Factor are given as follows:</p> <p>FS= RA + AF + CF - AG</p> <p>Where: FS = Field Strength RA = Receiver Amplitude AF = Antenna Factor CF = Cable Attenuation Factor AG = Amplifier Gain</p>
Tested Range	30MHz to 24.5GHz
Test Voltage	120VAC/60Hz
Results	The EUT meets the requirements of test reference for Radiated emission on Horizontal polarization by 23.28dBuV/m of Average detector at 9.8784GHz
Changes or Modifications	There were no modifications installed by Galanz test personnel.
M. Uncertainty	±3.2dB

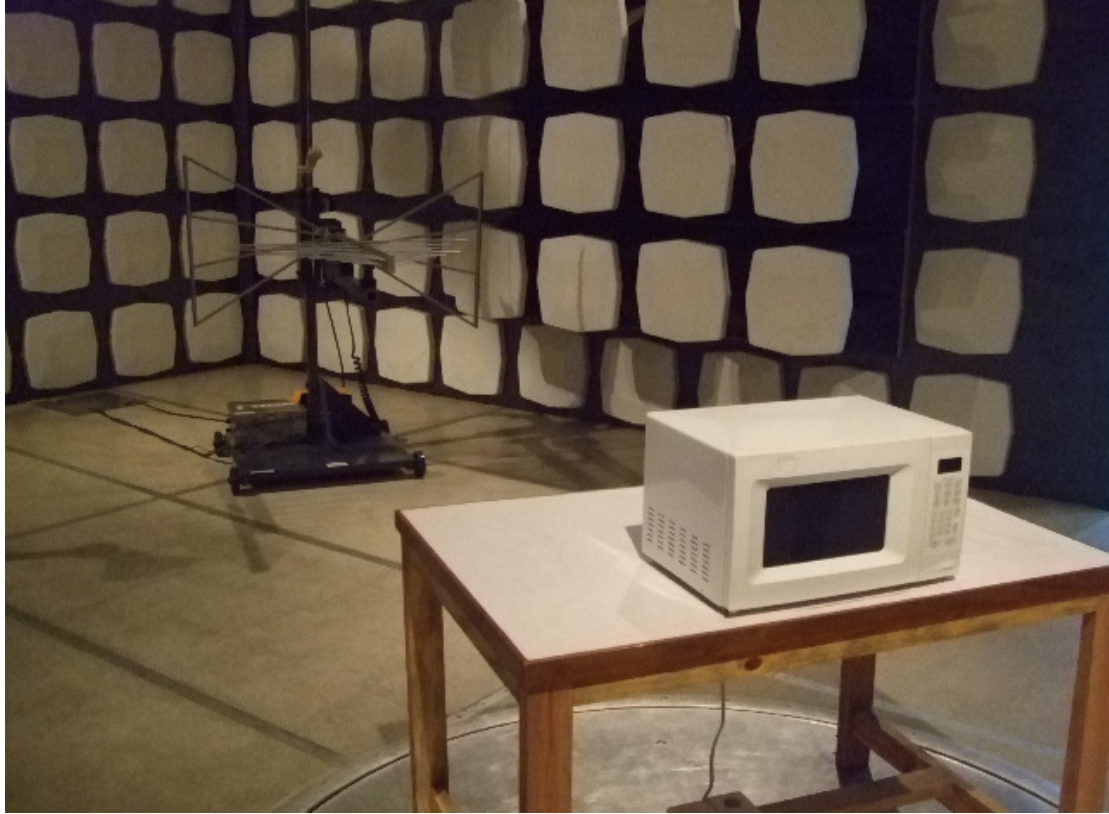
Test Data

30MHz-1GHz				
Frequency (MHz)	Antenna Polarization (V/H)	Corrected QP reading (dBμV/m)	Delta QP (dB)	3 Meters Limits (dBμV/m)
33.00	H	23.6	45.4	69.0
302.50	H	26.3	42.7	69.0
398.40	H	25.5	43.5	69.0
385.24	V	28.9	40.1	69.0
502.43	V	26.5	42.5	69.0
789.50	V	30.1	38.9	69.0
Note: All readings are quasi-peak unless stated otherwise, using a bandwidth of 120kHz, with a 1s sweep time. A video filter was not used.				
1GHz-25GHz				
Frequency (GHz)	Antenna Polarization (V/H)	Corrected AV reading (dBμV/m)	Delta AV (dB)	3 Meters Limits (dBμV/m)
4.9196	H	38.34	30.66	69.0
7.3887	H	38.33	30.67	69.0
9.8784	H	45.72	23.28	69.0
4.9139	V	34.31	34.69	69.0
7.3956	V	36.77	32.23	69.0
9.8757	V	43.98	25.02	69.0
Comment: None				
Note: All reading are average unless stated otherwise, using a bandwidth of 1MHz, with a 30 ms sweep time. A video filter was not used.				

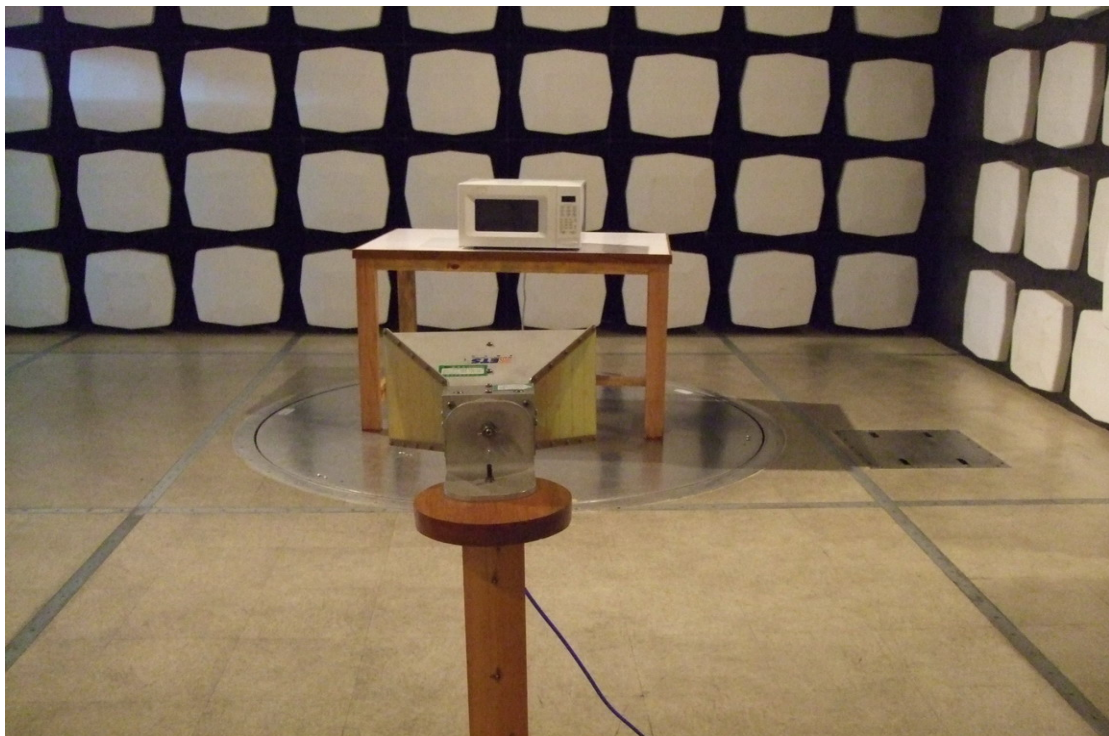
Test Equipment List

Test equipment	Manufacturer	Model	Serial No.	Last Cal.	Cal. Due
Broadband Antenna	ETS	3142C	00042672	2008-09-26	2010-09-26
Horn Antenna	ETS	3115	6587	2008-08-02	2010-08-02
Band-pass Filter	Micro-Tronic	BRM50702	S/N-030	2008-11-03	2009-11-02
EMI Receiver	SCHAFFNER	SMR4503	44	2008-07-08	2009-07-08
Spectrum Analyzer	R&S	FSP30	100755	2008-11-03	2009-11-02
3m Anechoic chamber	ETS	N/A	N/A	2007-05-23	2009-05-23

Note: All testing were performed using internationally recognized standard. All test instruments were calibrated and traceable to the National Institute of Standards and Technology.



Radiated Emission Test Setup (30-1000MHz)



Radiated Emission Test Setup (1-25GHz)

The End