

## EMI TEST REPORT

On Model Name: Microwave Oven

Model Number: P11043(X) -(Y)

Brand Name: Galanz

Prepared for Guangdong Galanz Enterprises Co., Ltd

FCC ID Number: UHW11043001

According to

FCC Part 18(2013)

Industrial, Scientific and Medical Equipment

FCC/OST MP-5(1986)

FCC methods of measurements of radio noise emission from industrial, scientific and medical equipment

Test Report #: GUA-1401-11103-FCC

Tested by: *Sewen Guo* ECMG  
Sewen Guo/Engineer Company Name

Reviewed by: *Jawen Yin* ECMG  
Jawen Yin/Senior Engineer Company Name

QC Manager: *Swall Zhang* ECMG  
Swall Zhang/QC Manager Company Name

Test Report Released by: *Swall Zhang* January 17<sup>th</sup>, 2014  
Swall Zhang Date

## **Test Location**

*Tests performed in a Certified ANSI Semi-Anechoic Chamber and Shielded Room.*

*Test Site Location : Galanz EMC Laboratory  
25 South Ronggui Rd., Shunde,  
Foshan, Guangdong, China*

*Tel : (86)-757-23612785*

*Fax : (86)-757-23612537*

## **Test Facility**

*The test facility was recognized, certified, or accredited by the following organizations:*

- *CNAL - LAB Code: L2244  
Galanz EMC Laboratory has been assessed and in compliance with CNAL/AC01:2002 accreditation criteria for testing laboratories (identical to ISO/IEC 17025:2005 General Requirements) for the Competence of Testing Laboratories.*
- *FCC - Registration No.: 580210  
Galanz EMC Laboratory has been registered and fully described in a report filed with the (FCC) Federal Communications Commission. The acceptance letter from the FCC was maintained in our files.*

# Table of Contents

---

<i>LIST ATTACHED FILES</i> .....	1
<i>GOVERNMENT DISCLAIMER NOTICE</i> .....	2
<i>REPRODUCTION CLAUSE</i> .....	2
<i>OPINIONS AND INTERPRETATIONS</i> .....	2
<i>STATEMENT OF MEASUREMENT UNCERTAINTY</i> .....	2
<i>ADMINISTRATIVE DATA</i> .....	3
<i>EUT DESCRIPTION</i> .....	4
<i>EUT MODEL DERIVED</i> .....	4
<i>TEST SUMMARY</i> .....	5
<i>LOAD FOR MICROWAVE OVEN</i> .....	6
<i>EUT EXERCISE SOFTWARE</i> .....	7
<i>EQUIPMENT MODIFICATION</i> .....	7
<i>EUT SAMPLE PHOTOS FOR MODEL P11043AP-YZ</i> .....	8
<i>TEST SYSTEM DETAILS</i> .....	13
<i>CONFIGURATION OF TESTED SYSTEM</i> .....	14
<i>ATTACHMENT 1 - RADIATION HAZARD TEST</i> .....	15
<i>ATTACHMENT 2 - INPUT POWER MEASUREMENT</i> .....	17
<i>ATTACHMENT 3 - RF OUTPUT POWER MEASUREMENT</i> .....	20
<i>ATTACHMENT 4 - OPERATING FREQUENCY MEASUREMENT</i> .....	23
<i>ATTACHMENT 5 - CONDUCTED EMISSION TEST RESULTS</i> .....	26
<i>ATTACHMENT 6 - RADIATED EMISSION TEST RESULTS</i> .....	30

## List Attached Files

<i>Exhibit Type</i>	<i>File Description</i>	<i>File Name</i>
<i>Test Report</i>	<i>Test Report</i>	<i>UHW11043001 _Test Report.pdf</i>
<i>Operation Description</i>	<i>Technical Description</i>	<i>UHW11043001 _Operation Description.pdf</i>
<i>External Photos</i>	<i>External Photos</i>	<i>UHW11043001 _External Photos</i>
<i>Internal Photos</i>	<i>Internal Photos</i>	<i>UHW11043001 _Internal Photos</i>
<i>Block Diagram</i>	<i>Block Diagram</i>	<i>UHW11043001 _Block Diagram.pdf</i>
<i>Schematics</i>	<i>Circuit Diagram</i>	<i>UHW11043001 _Schematics.pdf</i>
<i>ID Label/Location</i>	<i>Label and Location</i>	<i>UHW11043001 _Label &amp; Location.pdf</i>
<i>User Manual</i>	<i>User Manual</i>	<i>UHW11043001 _User's Manual.pdf</i>
<i>Test set-up photos</i>	<i>Test set-up photos</i>	<i>UHW11043001 _Test Set-up Photos</i>

### **Government Disclaimer Notice**

*When government drawing, specification, or other data are used for any purpose other than in connection with a definitely related government procurement operation, the United States Government thereby incurs no responsibility nor any obligation whatsoever; and the fact that the Government may have formulated, furnished, or in any way supplied the said drawing, specifications, or other data, is not to be regarded by implication or otherwise in any manner licensing the holder or any other person or corporation, or conveying any rights or permission to manufacture, use, or sell patented invention that may in any way be related thereto. This report must not be used to claim product endorsement by NVLAP or any agency of the U.S. Government.*

### **Reproduction Clause**

*Any reproduction of this document must be done in full. No single part of this document may be reproduced without permission from ECMG Electronic Technical Testing Corp (Shenzhen).*

### **Opinions and Interpretations**

*This test report relates to the abovementioned equipment under test (EUT). Without the permission of ECMG Electronic Technical Testing Corp (Shenzhen). Test Lab this test report is not permitted to be duplicated in extracts. This test report does not entitle to carry any test mark on this or similar products. The manufacturer has sole responsibility of continued compliance of the device.*

### **Statement of Measurement Uncertainty**

*The data and results referenced in the document are true and accurate. The reader is cautioned that there may be errors within the calibration limits of the equipment and facilities that can account for a nominal measurement error. Furthermore, component and process variability of devices similar to that tested may result in additional deviation.*

## **Administrative Data**

*Test Sample* : *Microwave Oven*

*Model Numbers* : *P11043(X)-(Y)*

*Model Tested* : *P11043AP-YZ*

*Brand Name* : *Galanz*

*Receipt Date* : *January 8<sup>th</sup>, 2014*

*Date Tested* : *January 9<sup>th</sup>, 2014 to January 14<sup>th</sup>, 2014*

*Applicant* : *Guangdong Galanz Enterprises Co., Ltd.*

*Address* : *25 ronggui Nan Rd., Shunde, Foshan, Guangdong, China*

*Telephone* : *(86)-757-23612785*

*Fax* : *(86)-757-23612537*

*Manufacturer* : *Guangdong Galanz Enterprises Co., Ltd.*

*Address* : *25 ronggui Nan Rd., Shunde, Foshan, Guangdong, China*

*Telephone* : *(86)-757-23612785*

*Fax* : *(86)-757-23612537*

*Factory* : *Guangdong Galanz Enterprises Co., Ltd.*

*Address* : *25 ronggui Nan Rd., Shunde, Foshan, Guangdong, China*

*Telephone* : *(86)-757-23612785*

*Fax* : *(86)-757-23612537*

## **EUT Description**

*Guangdong Galanz Enterprises Co., Ltd. model tested P11043AP-YZ (referred to as the EUT in this report) is a Microwave Oven.*

*The technical specifications of EUT are as follows:*

<i>Power Supply</i>	<i>120V AC/60Hz</i>
<i>Rated Input Power (Microwave)</i>	<i>1600W</i>
<i>Rated Output Power (Microwave)</i>	<i>1100W</i>
<i>Frequency</i>	<i>2450 MHz(Class B/Group 2)</i>
<i>Magnetron Model</i>	<i>M24FC-610A</i>
<i>Magnetron Manufacturer</i>	<i>Galanz</i>

*NOTE: For more detailed information or features please refer to user's manual of EUT.*

## **EUT Model Derived**

*P11043(X)-(Y) model designations:*

*P: With Microwave functions only.*

*110: denote the output power is 1100W.*

*43: denote different capacity in 43 liters.*

*Variable (X) may be L,P,SL,SP ,AL,AP,ASL,ASP ,EL,EP, ESL,ESP  
"L" is pull-out type door, "P" is push-button type door. When there is no letter before "L" and "P", denotes mechanical control model; When there are "A" or "E" denote the electrical control model. "S" denotes stainless steel cavity; When there is without "S" before "L" or "P", denotes the epoxy painted cavity.*

*Variable (Y) may compose by one to six characters from A to Z and/or numbers from 0 to 9. It represents the differences of the appearance.*

*Model P11043AP-YZ was selected for the final testing.*

## Test Summary

The electromagnetic compatibility requirements on model P11043AP-YZ for this test are stated below. All results listed in this report relate exclusively to this above-mentioned model as the equipment under test. this report confers no approval or endorsement upon any other component, host or subsystem used in the test set-up.

<b>Emission Tests</b>				
<b>Specifications</b>	<b>Description</b>	<b>Test Results</b>	<b>Test Point</b>	<b>Remark</b>
FCC Part 18:2013 FCC/OST MP-5:1986 ANSI C63.4-2003	Radiation Hazard Measurement	Passed	Enclosure	Attachment 1
FCC Part 18:2013 FCC/OST MP-5:1986 ANSI C63.4-2003	Input Power Measurement	Passed	AC Input Port	Attachment 2
FCC Part 18:2013 FCC/OST MP-5:1986 ANSI C63.4-2003	RF Output power Measurement	Passed	EUT	Attachment 3
FCC Part 18:2013 FCC/OST MP-5:1986 ANSI C63.4-2003	Operating Frequency Measurement	Passed	EUT	Attachment 4
FCC Part 18:2013 FCC/OST MP-5:1986 ANSI C63.4-2003	Conducted Emission	Passed	AC Input Port	Attachment 5
FCC Part 18:2013 FCC/OST MP-5:1986 ANSI C63.4-2003	Radiated Emission	Passed	Enclosure	Attachment 6



## **Load for Microwave Oven**

*For all measurements the energy developed by the oven was absorbed by a dummy load consisting of a quantity of tap water in a beaker. If the oven was provided with a shelf or other utensil support, this support was in its initial normal position. For ovens rated at 1000watts or less power output, the beaker contained quantities of water as listed in the following subparagraphs. For ovens rated at more than 1000watts output, each quantity was increased by 50% for each 500watts or fraction thereof in excess of 1000 watts. Additional beakers were used if necessary.*

*-Load for power output measurement: 1000 milliliters of water in the beaker located in the center of the oven.*

*-Load for frequency measurement: 1000 milliliters of water in the beaker located in the center of the oven.*

*-Load for measurement of radiation on second and third harmonic: Two loads, one of 700 and the other of 300 milliliters, of water are used. Each load is tested both with the beaker located in the center of the oven and with it in the right front corner.*

*-Load for all other measurements: 700 milliliters of water, with the beaker located in the center of the oven.*

**Note:** *Since rated output power of the EUT is 1100 watts, the following load water quantity shall apply:*

*-Load for power output measurement: 1100 milliliters of water in the beaker located in the center of the oven.*

*-Load for frequency measurement: 1100 milliliters of water in the beaker located in the center of the oven.*

*-Load for measurement of radiation on second and third harmonic: Two loads, one of 770 and the other of 330 milliliters, of water are used. Each load is tested both with the beaker located in the center of the oven and with it in the right front corner.*

*-Load for all other measurements: 770 milliliters of water, with the beaker located in the center of the oven.*

### ***EUT Exercise Software***

*No test software support this test.*

### ***Equipment Modification***

*Any modifications installed previous to testing by Guangdong Galanz Enterprises Co., Ltd. will be incorporated in each production model sold or leased in United States.*

*There were no modifications installed by ECMG Electronic Technical Testing Corp (Shenzhen) test personnel.*

**EUT Sample Photos for Model P11043AP-YZ**



**EUT Front View**



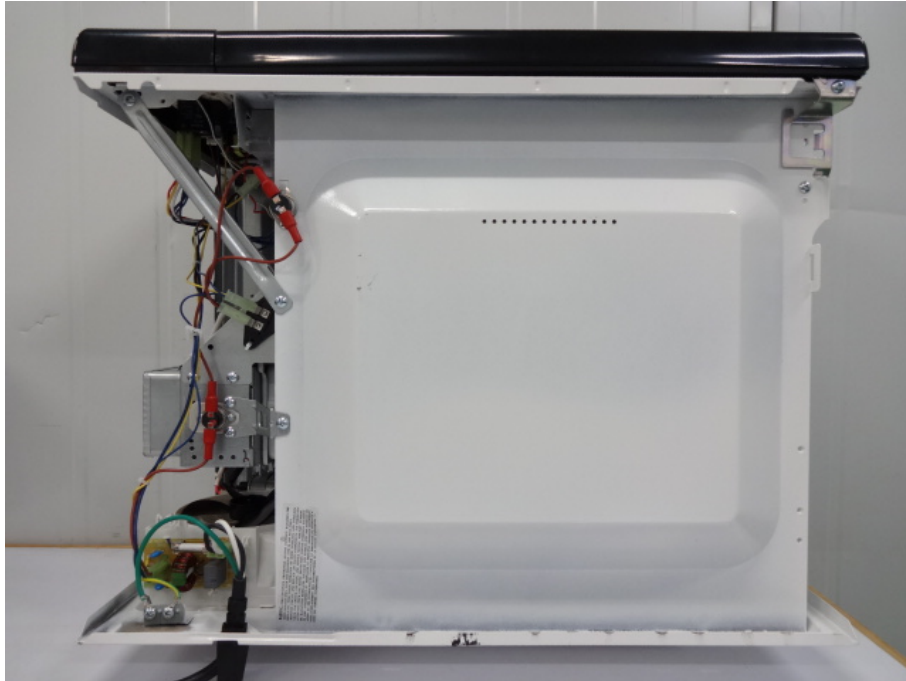
**EUT Back View**



*Door open view*



*EUT Uncovered View from right side*

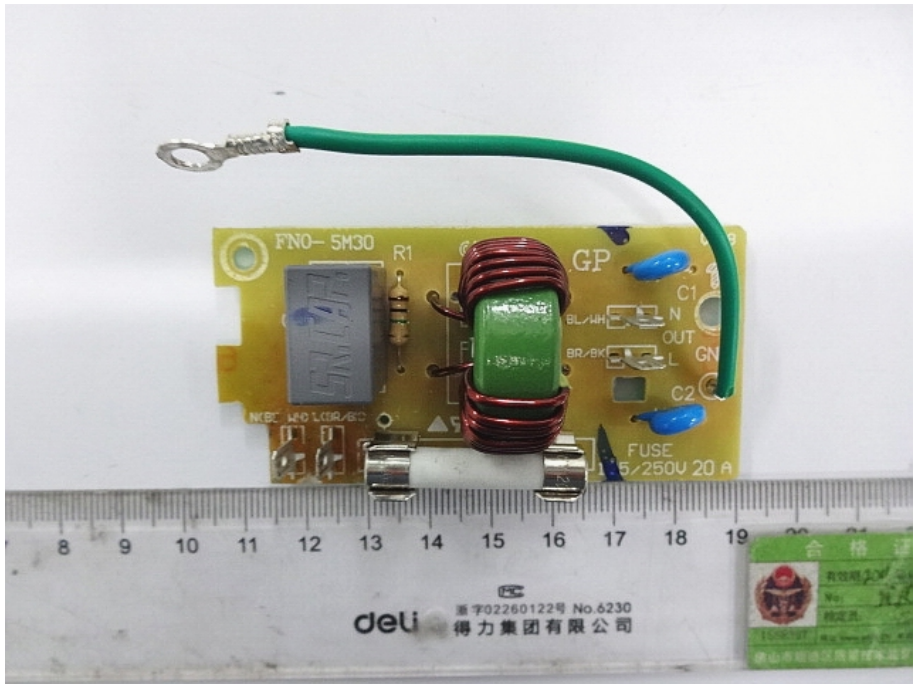


*EUT Uncovered View from top side*

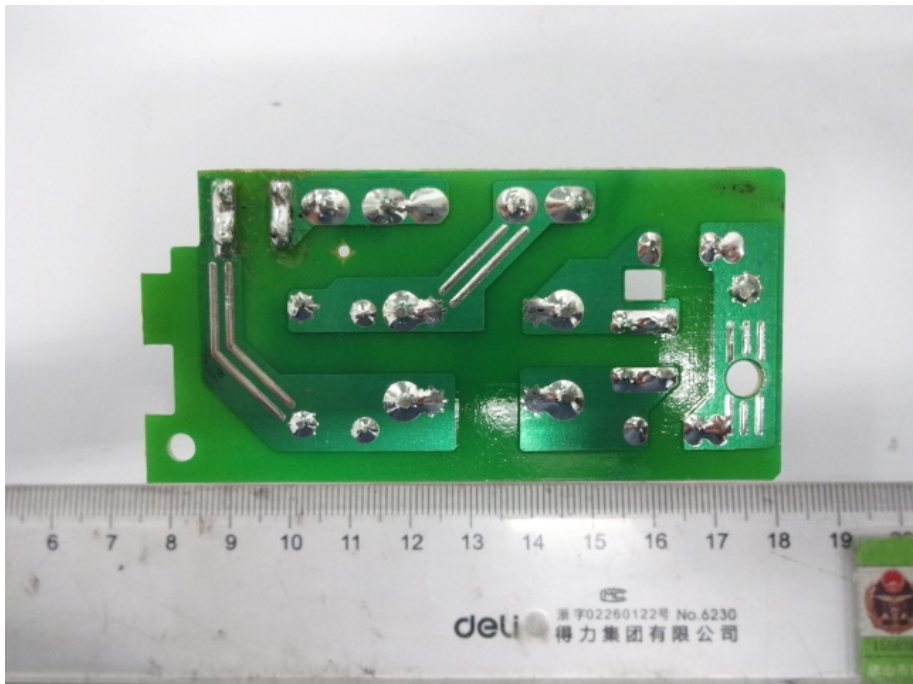


*Magnetron Front View*

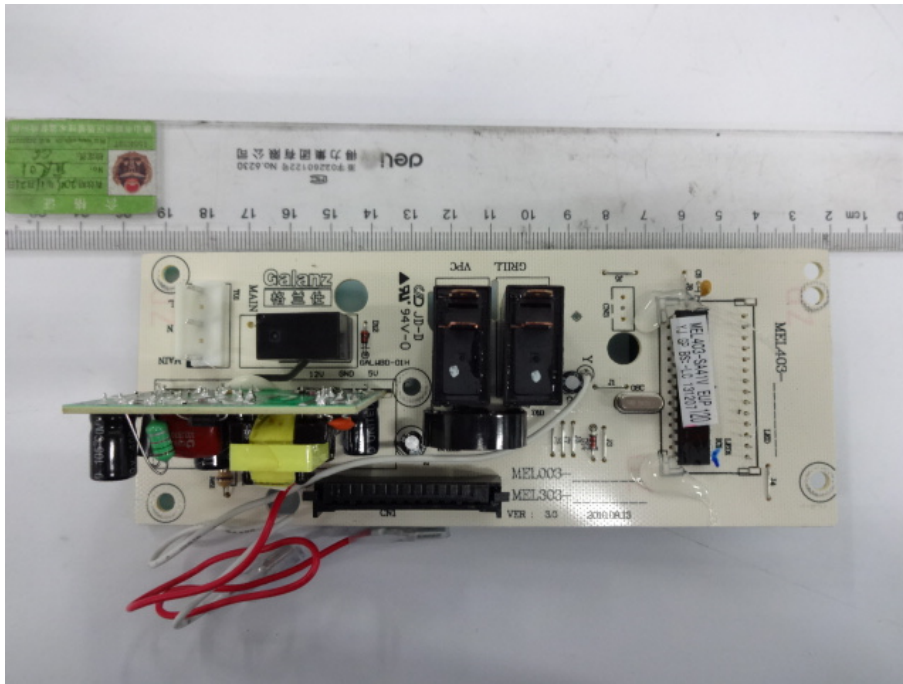




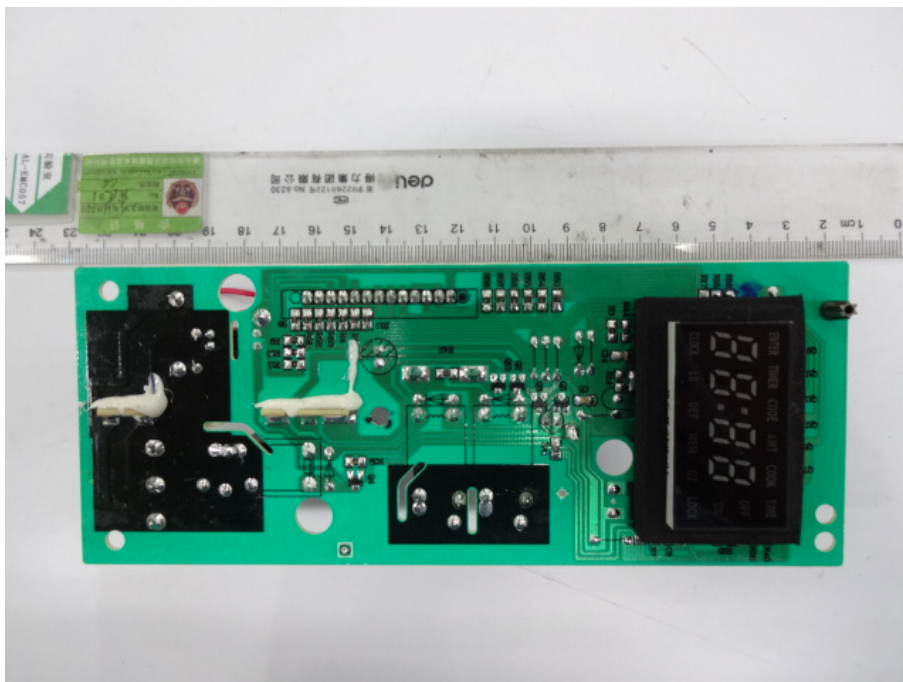
**Power Filter Board Top View**



**Power Filter Board Bottom View**



**Motherboard Top View**



**Motherboard -Bottom View**

## Test System Details

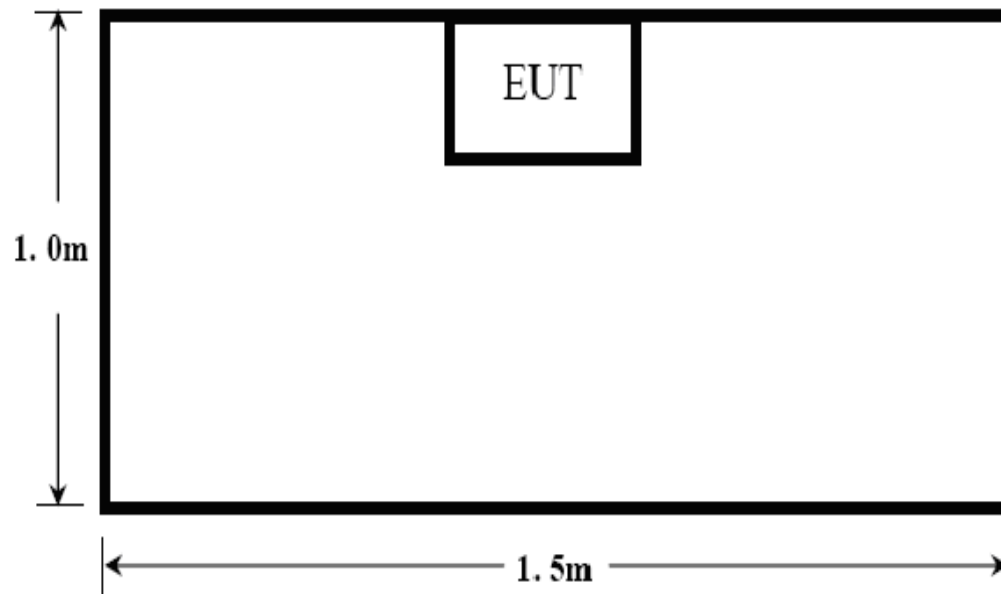
<b>EUT</b>					
<b>Model Number:</b>	P11043(X) -(Y)				
<b>Model Tested:</b>	P11043AP-YZ				
<b>Description:</b>	Microwave Oven				
<b>Input:</b>	AC 120V/60Hz				
<b>Manufacturer:</b>	Guangdong Galanz Enterprises Co., Ltd.				
<b>Support Equipment</b>					
<b>Description</b>	<b>Model Number</b>	<b>Serial Number</b>	<b>Manufacturer</b>		
N/A					
<b>Cable Description</b>					
<b>Description</b>	<b>From</b>	<b>To</b>	<b>Length (Meters)</b>	<b>Shielded (Y/N)</b>	<b>Ferrite (Y/N)</b>
Power Cable	EUT	Plug	1.1	N	N
Note: The "EUT" means "Microwave Oven".					

**Note:**

The EUT has been tested as an independent unit together with other necessary accessories or support units. The above support units or accessories were used to form a representative test configuration during the test tests.



## Configuration of Tested System



## ATTACHMENT 1 -RADIATION HAZARD TEST

<b>CLIENT:</b>	Guangdong Galanz Enterprises Co., Ltd.	<b>TEST STANDERD:</b>	FCC Part 18
<b>MODEL NUMBERS:</b>	P11043(X) -(Y)	<b>PRODUCT:</b>	Microwave Oven
<b>MODEL TESTED:</b>	P11043AP-YZ	<b>EUT DESIGNATION:</b>	Home or Office
<b>TEMPERATURE:</b>	22°C	<b>HUMIDITY:</b>	55%
<b>ATM PRESSURE:</b>	103kPa	<b>GROUNDING:</b>	Through AC Power Cord
<b>TESTED BY:</b>	Sewen Guo	<b>DATE OF TEST:</b>	January 9 <sup>th</sup> ,2014
<b>TEST REFERENCE:</b>	ANSI C63.4-2003, FCC/OST MP-5:1986		
<b>TEST PROCEDURE:</b>	The EUT was set-up according to the FCC MP-5 and FCC Part 18 for Radiation Hazard Measurement. The measurement was using a microwave leakage meter to measure the Radiation leakage in the as-received condition with the oven door closed. A 770ml water load in a beaker was located in the center of the oven and the Microwave Oven was set to maximum power. While the oven operating, the microwave meter will check the leakage and then record the maximum leakage.		
<b>TESTED RANGE:</b>	N/A		
<b>TEST VOLTAGE:</b>	AC 120V/60Hz		
<b>RESULTS:</b>	There was no microwave leakage exceeding a power level of 0.03mW/cm <sup>2</sup> observed at any point 5cm or more from the external surface of the oven. A maximum of 1.0 mW/cm <sup>2</sup> is allowed in accordance with the applicable FCC standards. Hence, microwave leakage in the as-received condition with the oven door closed was below the maximum allowed. The test results relate only to the equipment under test provided by client.		
<b>CHANGES OR MODIFICATIONS:</b>	There were no modifications installed by ECMG Electronic Technical Testing Corp (Shenzhen) test personnel.		
<b>M. UNCERTAINTY:</b>	0.0001mW/cm <sup>2</sup>		

**Test Equipment List:**

Test Equipment	Model No.	Manufacturer	Serial No.	Last Cal.	Cal. Interval
Microwave Measurement System	HOLADAY	HI-1710	98370	2013.07.10	2014.07.09
<p>Note: All testing were performed using internationally recognized standards. All test instruments were calibrated and traceable to the National Institute of Standards and Technology (NIST).</p>					

TESTED BY: *Jianxin* **ENGINEER** ECMG  
COMPANY NAME

REVIEWED BY: *Jianxin* **SENIOR ENGINEER** ECMG  
COMPANY NAME



**Radiation Hazard Test Set-up**

**ATTACHMENT 2 - INPUT POWER MEASUREMENT**

<b>CLIENT:</b>	Guangdong Galanz Enterprises Co., Ltd.	<b>TEST STANDERD:</b>	FCC Part 18
<b>MODEL NUMBERS:</b>	P11043(X) -(Y)	<b>PRODUCT:</b>	Microwave Oven
<b>MODEL TESTED:</b>	P11043AP-YZ	<b>EUT DESIGNATION:</b>	Home or Office
<b>TEMPERATURE:</b>	21°C	<b>HUMIDITY:</b>	55%
<b>ATM PRESSURE:</b>	103.1kPa	<b>GROUNDING:</b>	Through AC Power Cord
<b>TESTED BY:</b>	Sewen Guo	<b>DATE OF TEST:</b>	January 9 <sup>th</sup> , 2014
<b>TEST REFERENCE:</b>	ANSI C63.4-2003, FCC/OST MP-5:1986		
<b>TEST PROCEDURE:</b>	The EUT was set up according to the FCC MP-5 and FCC Part 18 for input power measurement. The input power and current was measured using a power analyzer. A 770ml water load in a beaker was located in the center of the oven and the Microwave Oven was set to maximum power. While the oven is operating, use a voltmeter and an ammeter to test the AC input voltage and current.		
<b>TESTED RANGE:</b>	N/A		
<b>TEST VOLTAGE:</b>	120VAC / 60Hz		
<b>RESULTS :</b>	Based on the measured input power, the EUT was found to be operating within the intended specifications. The test results relate only to the equipment under test provided by client.		
<b>CHANGES OR MODIFICATIONS:</b>	There were no modifications installed by ECMG Electronic Technical Testing Corp (Shenzhen) test personnel.		
<b>M. UNCERTAINTY :</b>	± 5W		

**Test Data:**

<i>Input Voltage (Vac/Hz)</i>	<i>Input Current (amps)</i>	<i>Measured Input Power(watts)</i>	<i>Rated Input Power(watts)</i>
120.5	14.26	1669	1600

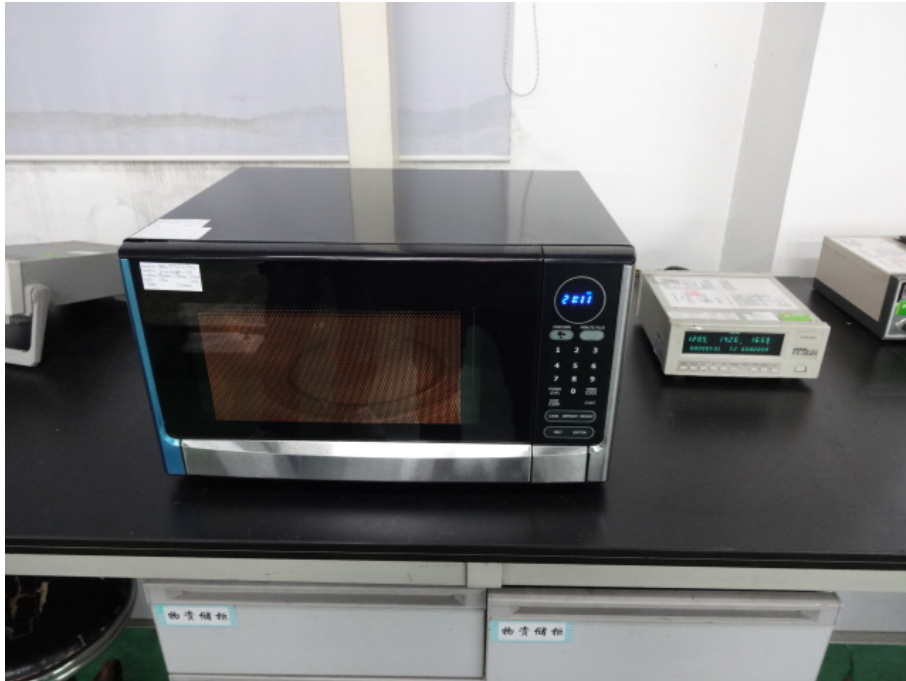
**Test Equipments List:**

<i>Test Equipment</i>	<i>Manufacturer</i>	<i>Model</i>	<i>Serial No.</i>	<i>Last Cal.</i>	<i>Cal. Due</i>
Power Meter	Ainuo	AN8716P	058704074	2013-07-19	2014-07-18

*Note: All testing were performed using internationally recognized standards. All test instruments were calibrated and traceable to the National Institute of Standards and Technology (NIST).*

TESTED BY: *Jenero* ECMG  
ENGINEER COMPANY NAME

REVIEWED BY: *Jameryia* ECMG  
SENIOR ENGINEER COMPANY NAME



***Input Power Test Set-Up***

### ATTACHMENT 3 – RF OUTPUT POWER MEASUREMENT

<b>CLIENT:</b>	Guangdong Galanz Enterprises Co., Ltd.	<b>TEST STANDERD:</b>	FCC Part 18
<b>MODEL NUMBERS:</b>	P11043(X) -(Y)	<b>PRODUCT:</b>	Microwave Oven
<b>MODEL TESTED:</b>	P11043AP-YZ	<b>EUT DESIGNATION:</b>	Home or Office
<b>TEMPERATURE:</b>	22°C	<b>HUMIDITY:</b>	60%RH
<b>ATM PRESSURE:</b>	103kPa	<b>GROUNDING:</b>	Through AC Power Cord
<b>TESTED BY:</b>	Sewen Guo	<b>DATE OF TEST:</b>	January 9 <sup>th</sup> , 2014
<b>TEST REFERENCE:</b>	ANSI C63.4-2003, FCC/OST MP-5:1986		
<b>TEST PROCEDURE:</b>	<p>The EUT was set up according to the FCC MP-5 and FCC Part 18 for RF output power Measurement. The Caloric Method was used to determine maximum RF output power. The initial temperature of the water load was measured. A 1100ml water load in a beaker was located in the center of the oven. The oven was operated at maximum output power for 120 seconds, the temperature of the water was re-measured.</p> <p>RF Output Power  <math>= (4.2 \text{ joules/calorie})(\text{volume in milliliters})(\text{temperature rise}) / (\text{time in seconds})</math>  <math>= 4.2 \text{ joules/calorie} \times 1100 \times (\text{Final Temp} - \text{Initial Temp}) / 120</math></p>		
<b>TESTED RANGE:</b>	N/A		
<b>TEST VOLTAGE:</b>	120VAC / 60Hz		
<b>RESULTS:</b>	RF Output Power =1035.7watts. The test results relate only to the equipment under test provided by client.		
<b>CHANGES OR MODIFICATIONS:</b>	There were no modifications installed by ECMG Electronic Technical Testing Corp (Shenzhen) test personnel.		
<b>M. UNCERTAINTY:</b>	± 0.3°C		

**Test Result:**

Quality of Water(ml)	Starting Temperature (°C)	Final Temperature (°C)	Elapsed Time (Seconds)	RF Output Power(watts)
1100	19.2	46.1	120S	1035.7

**Test Equipments list:**

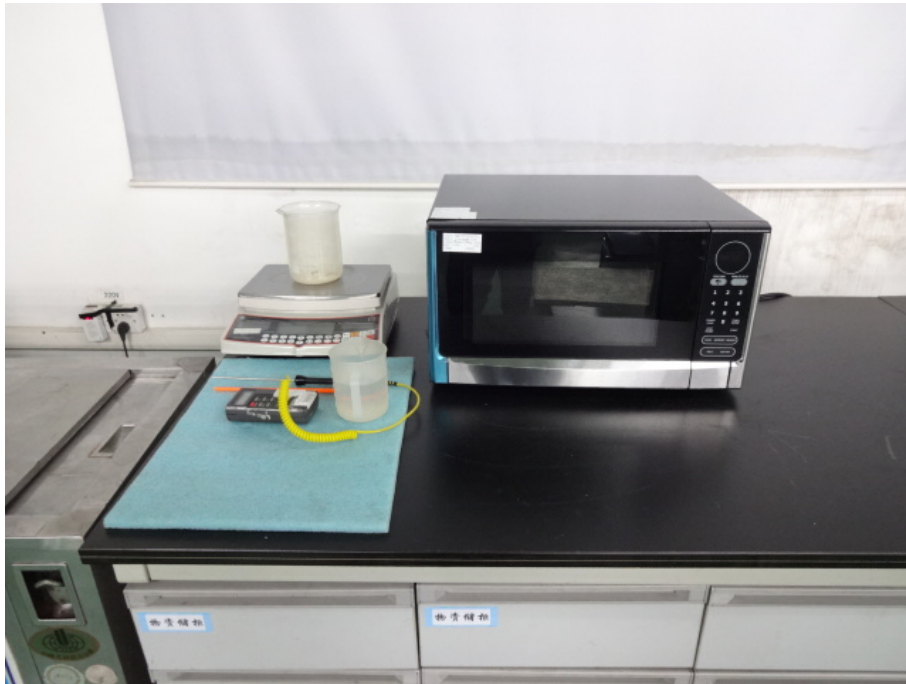
Test equipment	Manufacturer	Model	Serial No.	Last Cal.	Cal. Due
Digital thermometer	DEREE	DE-3003	G0023727	2013-07-04	2014-07-03
Electronic scale	PTL	Max=5kg	11038	2013-01-04	2014-01-04
Power Meter	Ainuo	AN8720P	058704074	2013-07-19	2014-07-18

Note: All testing were performed using internationally recognized standard. All test instruments were calibrated and traceable to the National Institute of Standards and Technology.

TESTED BY: *Jenerano* ECMG  
COMPANY NAME  
ENGINEER

REVIEWED BY: *Jenerano* ECMG  
COMPANY NAME  
SENIOR ENGINEER





***RF Output Power Test Set-Up***

**ATTACHMENT 4 – OPERATING FREQUENCY MEASUREMENT**

<b>CLIENT:</b>	Guangdong Galanz Enterprises Co., Ltd.	<b>TEST STANDERD:</b>	FCC Part 18
<b>MODEL NUMBERS:</b>	P11043(X) -(Y)	<b>PRODUCT:</b>	Microwave Oven
<b>MODEL TESTED:</b>	P11043AP-YZ	<b>EUT DESIGNATION:</b>	Home or Office
<b>TEMPERATURE:</b>	22°C	<b>HUMIDITY:</b>	60%RH
<b>ATM PRESSURE:</b>	101.1kPa	<b>GROUNDING:</b>	Through AC Power Cord
<b>TESTED BY:</b>	Sewen Guo	<b>DATE OF TEST:</b>	January 14 <sup>th</sup> ,2014
<b>TEST REFERENCE:</b>	ANSI C63.4-2003, FCC/OST MP-5:1986		
<b>TEST PROCEDURE:</b>	<p>The EUT was set up according to the FCC MP-5 and FCC Part 18 for Operating Frequency Measurement.</p> <p>1) The variation of frequency with time. The operating frequency was measured using a spectrum analyzer. Starting with the EUT at room temperature, a 1100ml water load in a beaker was located in the center of the oven. Set a spectrum analyzer with antenna at 3 meters distance form the oven and the oven was operated at maximum output power. The fundamental operating frequency was monitored until the water load was reduced to 20 percent of the original load.</p> <p>2) The variation of frequency with Line Voltage. The operating frequency was measured using a spectrum analyzer. The EUT was operated/warmed by at least 10 minutes of use with a 1100ml water load at room temperature at the beginning of the test. Then the operating frequency was monitored as the input voltage was varied between 80 and 125 percent of the nominal rating.</p>		
<b>TESTED RANGE:</b>	2450 ± 50MHz		
<b>TEST VOLTAGE:</b>	120VAC / 60Hz		
<b>RESULTS:</b>	Please refer to following pages for details of the variation in operating frequency with time & line voltage measurement. The test results relate only to the equipment under test provided by client.		
<b>CHANGES OR MODIFICATIONS:</b>	There were no modifications installed by ECMG Electronic Technical Testing Corp (Shenzhen) test personnel.		
<b>M. UNCERTAINTY:</b>	Freq. ±10kHz		

**Variation in Operating Frequency with Time:**


<i>Minimum Frequency (MHz)</i>	<i>Maximum Frequency (MHz)</i>
2406.8	2467.4

**Variation in Operating Frequency with Line Voltage:**

<i>Minimum Frequency (MHz)</i>	<i>Maximum Frequency (MHz)</i>
2406.4	2468.0
Note: Line voltage varied from 96VAC to 150VAC.	

**Test Equipments List:**

<i>Test Equipment</i>	<i>Manufacturer</i>	<i>Model</i>	<i>Serial No.</i>	<i>Last Cal.</i>	<i>Cal. Due</i>
Horn Antenna	ETS	3115	6587	2013-08-02	2014-08-02
Spectrum Analyzer	R&S	FSP30	100755	2013-11-21	2014-11-21
3m Anechoic chamber	ETS	RFD-F-100	3187	2013-05-27	2014-05-27
Note: All testing were performed using internationally recognized standards. All test instruments were calibrated and traceable to the National Institute of Standards and Technology (NIST).					

TESTED BY:  ECMG  
COMPANY NAME  
ENGINEER

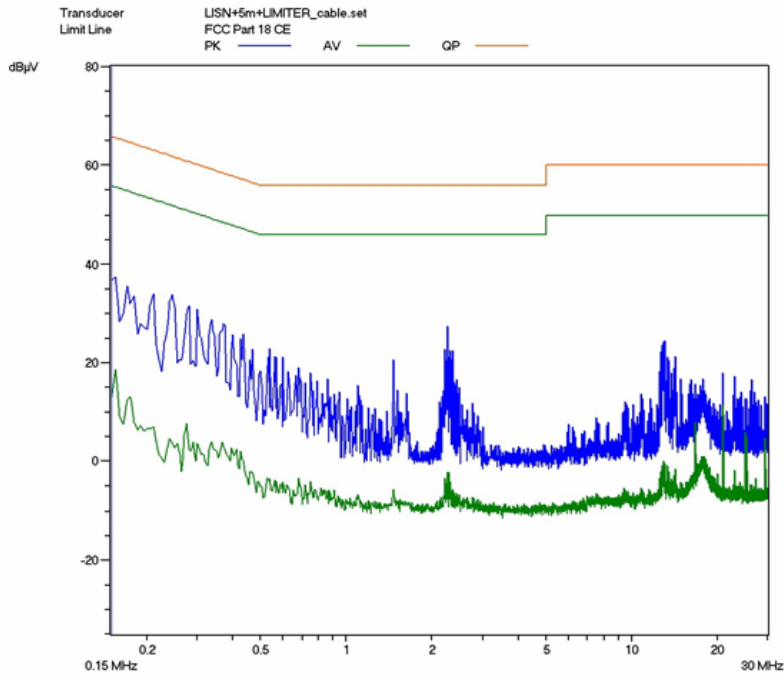
REVIEWED BY:  ECMG  
COMPANY NAME  
SENIOR ENGINEER



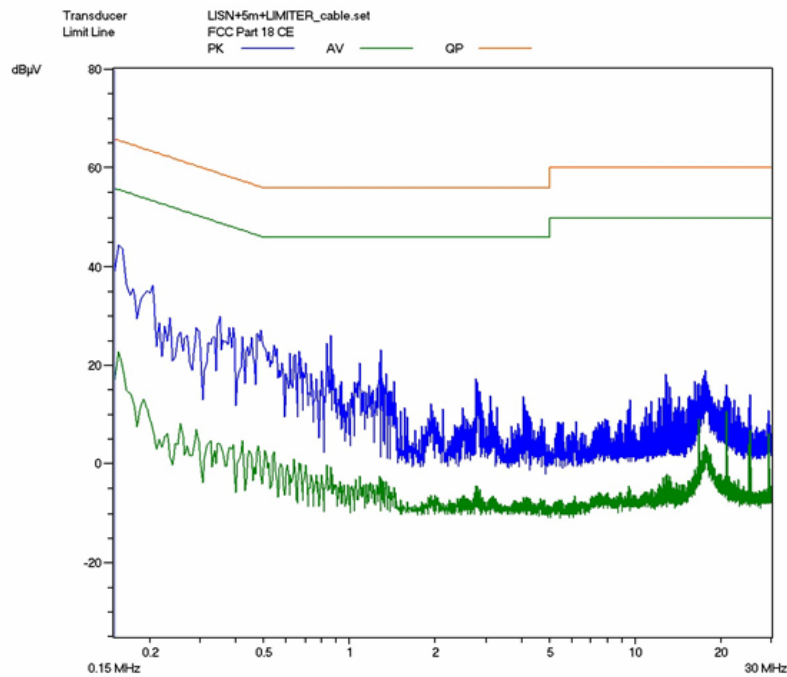
***Operating Frequency Test Set-up***

**ATTACHMENT 5 – CONDUCTED EMISSION TEST RESULTS**

<b>CLIENT:</b>	Guangdong Galanz Enterprises Co., Ltd.	<b>TEST STANDERD:</b>	FCC Part 18
<b>MODEL NUMBERS:</b>	P11043(X) -(Y)	<b>PRODUCT:</b>	Microwave Oven
<b>MODEL TESTED:</b>	P11043AP-YZ	<b>EUT DESIGNATION:</b>	Home or Office
<b>TEMPERATURE:</b>	22°C	<b>HUMIDITY:</b>	64%RH
<b>ATM PRESSURE:</b>	101.1kPa	<b>GROUNDING:</b>	Through AC Power Cord
<b>TESTED BY:</b>	Sewen Guo	<b>DATE OF TEST:</b>	January 14 <sup>th</sup> , 2014
<b>TEST REFERENCE:</b>	ANSI C63.4-2003, FCC/OST MP-5:1986		
<b>TEST PROCEDURE:</b>	The EUT was set up according to the guideline of ANSI C63.4-2003 & FCC MP-5 for conducted emissions. The measurement was using a AMN on each line and an EMI receiver peak scan was made at the frequency measurement range. The six highest significant peaks were then marked, and these signals were then quasi-peaked and averaged. The frequency range investigated was from 150kHz to 30MHz.		
<b>TESTED RANGE:</b>	150kHz to 30MHz		
<b>TEST VOLTAGE:</b>	120VAC / 60H		
<b>RESULTS:</b>	The EUT meets the requirements of test reference for Conducted Emissions. The test results relate only to the equipment under test provided by client.		
<b>CHANGES OR MODIFICATIONS:</b>	There were no modifications installed by ECMG Electronic Technical Testing Corp (Shenzhen) test personnel.		
<b>M. UNCERTAINTY:</b>	±2.5 dB		



**Line L Conducted Emission Graph**



**Line N Conducted Emission Graph**

**Test Data:**

Lines (L/N)	Frequency (MHz)	Corrected QP Level (dBuV)	Limits QP (dBuV)	Margin QP (dB)	Frequency (MHz)	Corrected AV Level (dBuV)	Limits AV (dBuV)	Margin QP (dB)
L	0.154	34.5	65.8	-31.3	0.154	19.8	55.8	-36.0
L	0.244	28.7	62	-33.3	0.244	7.5	52	-44.5
L	20.971	19.7	60	-40.3	20.971	14.9	50	-35.1
N	0.157	38.7	65.6	-26.9	0.157	24.0	55.6	-31.6
N	0.483	28.3	56.3	-28.0	0.483	0.7	46.3	-45.6
N	20.972	20.4	60	-39.6	20.972	13.5	50	-36.5


Note :

- 1) All readings are using a bandwidth of 9 kHz, with a 500 ms sweep time. A video filter was not use.
  - 2) "QP" means "Quasi-Peak" values, "AV" means "Average" values.
- The other reading are too low against official limits that are not be recorded.

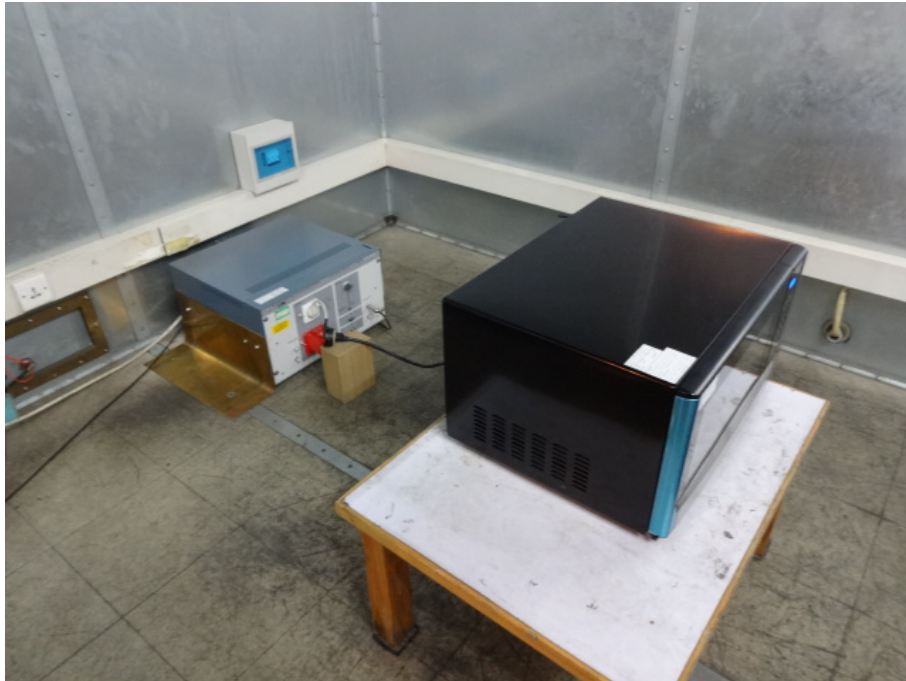
**Test Equipments List:**

Test Equipment	Manufacturer	Model No.	Serial No.	Last Cal.	Cal. Due
EMI Receiver	SCHAFFNER	SMR4503	44	2013-07-08	2014-07-08
LISN	R&S	ESH2-Z5	N/A	2013-07-08	2014-07-08
Shielding Room	ETS	RFD-100	3181	2013-05-18	2014-05-18

Note: All testing were performed using internationally recognized standards. All test instruments were calibrated and traceable to the National Institute of Standards and Technology (NIST).

TESTED BY:  **ENGINEER** ECMG  
COMPANY NAME

REVIEWED BY:  **SENIOR ENGINEER** ECMG  
COMPANY NAME



***Conducted Emission Test Set-up***



## ATTACHMENT 6 - RADIATED EMISSION TEST RESULTS

<b>CLIENT:</b>	Guangdong Galanz Enterprises Co., Ltd.	<b>TEST STANDERD:</b>	FCC Part 18
<b>MODEL NUMBERS:</b>	P11043(X) -(Y)	<b>PRODUCT:</b>	Microwave Oven
<b>MODEL TESTED:</b>	P11043AP-YZ	<b>EUT DESIGNATION:</b>	Home or Office
<b>TEMPERATURE:</b>	22°C	<b>HUMIDITY:</b>	63%RH
<b>ATM PRESSURE:</b>	103.0kPa	<b>GROUNDING:</b>	Through AC Power Cord
<b>TESTED BY:</b>	Sewen Guo	<b>DATE OF TEST:</b>	January 14 <sup>th</sup> , 2014
<b>TEST REFERENCE:</b>	ANSI C63.4-2003, FCC/OST MP-5:1986		
<b>TEST PROCEDURE:</b>	<p>The EUT was set up according to the guidelines of ANSI C63.4-2003&amp; FCC MP-5 for radiated emissions. Microwave Oven was placed on a 1m *1.5m nonconductive table. The top of the table is 1.0 m above the ground. The table is placed on a flush mounted metal turntable. An EMI receiver peak scan was made at the frequency measurement range (pre-scan) in an Anechoic chamber. Signal discrimination was then performed and the significant peaks marked. All data was recorded in Quasi-peak detection mode from 30 MHz to 1GHz and average detector mode above 1GHz.</p> <p>The following data lists the significant emission frequencies, measured levels, correction factors (including cable and antenna correction factors), and the corrected readings against the limits. Explanation of the Correction Factor are given as follows:</p> <p>FS= RA + AF + CF - AG</p> <p>Where: FS = Field Strength</p> <p>RA = Receiver Amplitude</p> <p>AF = Antenna Factor</p> <p>CF = Cable Attenuation Factor</p> <p>AG = Amplifier Gain</p>		
<b>TESTED RANGE:</b>	30MHz to 24.5GHz		
<b>TEST VOLTAGE:</b>	120VAC / 60Hz		
<b>RESULTS:</b>	The EUT meet the requirements of test reference for radiated emissions. The test results relate only to the equipment under test provided by client.		
<b>CHANGES OR MODIFICATIONS:</b>	There were no modifications installed by ECMG Electronic Technical Testing Corp (Shenzhen) test personnel.		
<b>M. UNCERTAINTY:</b>	± 3.2 dB		

**Field strength limits for out-of-band emissions :**

For RF output power <500W, Limit at 300m = 27.96dBuV/m

For RF output power >500W, Limit at 300m=20log [25\*SQRT(Power/500)]dBuV/m

**Test Data :**

<b>30MHz - 1GHz</b>				
<i>Frequency [MHz]</i>	<i>Antenna Polarization [V/H]</i>	<i>Field Strength [dBμV/m]</i>	<i>Delta, QP [dB]</i>	<i>3 Meters Limits [dBμV/m]</i>
100.614	V	36.1	-35.0	71.1
127.764	V	37.3	-33.8	71.1
267.978	V	35.6	-35.5	71.1
124.834	H	33.9	-37.2	71.1
266.386	H	34.4	-36.7	71.1
978.516	H	36.4	-34.7	71.1
<i>Note: 1) All readings are quasi-peak unless stated otherwise, using a bandwidth of 120kHz, with a 60s sweep time. A video filter was not used. 2) Field Strength = Read Level + Factor, Factor = Antenna Factor + Cable Loss - Preamp Factor.</i>				
<b>1GHz - 25GHz</b>				
<i>Frequency [GHz]</i>	<i>Antenna Polarization [V/H]</i>	<i>Field Strength [dBμV/m]</i>	<i>Delta, AV [dB]</i>	<i>3 Meters Limits [dBμV/m]</i>
2.21166	V	38.16	-32.94	71.1
4.92026	V	55.76	-15.34	71.1
7.39264	V	57.7	-13.4	71.1
9.88724	H	59.61	-11.49	71.1
1.8446	H	30.09	-41.01	71.1
4.91108	H	51.11	-19.99	71.1
<i>Note: 1) All readings are average unless stated otherwise, using a bandwidth of 1MHz, with a 60s sweep time. A video filter was not used. 2) Field Strength = Read Level + Factor, Factor = Antenna Factor + Cable Loss - Preamp Factor.</i>				

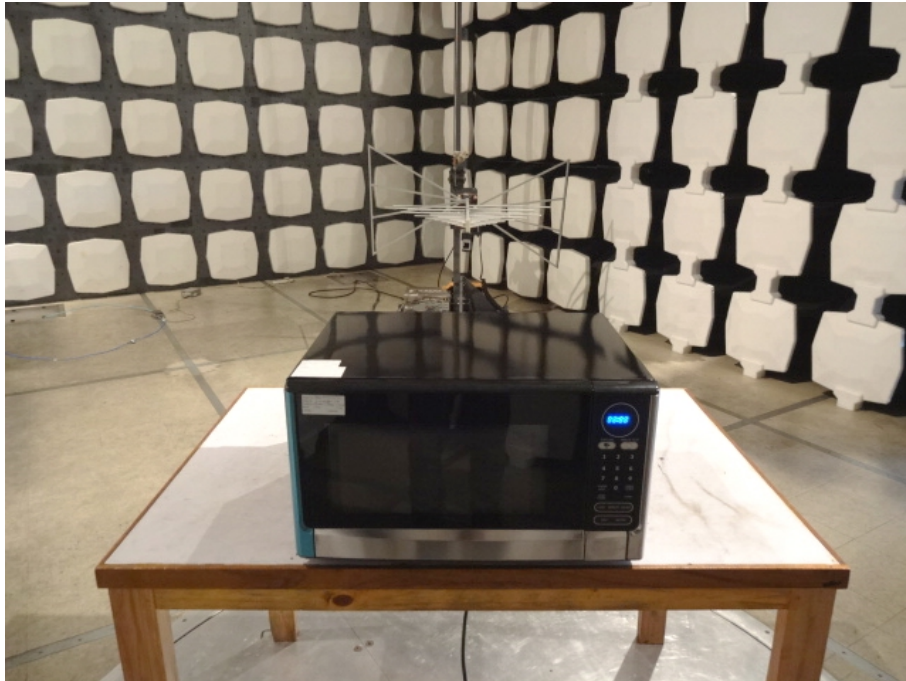
**Test Equipments List:**

<i>Test equipment</i>	<i>Manufacturer</i>	<i>Model</i>	<i>Serial No.</i>	<i>Last Cal.</i>	<i>Cal. Due</i>
<i>Broadband Antenna</i>	<i>ETS</i>	<i>3142C</i>	<i>00042672</i>	<i>2013-10-12</i>	<i>2014-10-12</i>
<i>Horn Antenna</i>	<i>ETS</i>	<i>3115</i>	<i>6587</i>	<i>2013-08-02</i>	<i>2014-08-02</i>
<i>Band-pass Filter</i>	<i>Micro-Tronic</i>	<i>BRM50702</i>	<i>030</i>	<i>2013-11-21</i>	<i>2014-11-21</i>
<i>EMI Receiver</i>	<i>SCHAFFNER</i>	<i>SMR4503</i>	<i>44</i>	<i>2013-07-08</i>	<i>2014-07-08</i>
<i>Spectrum Analyzer</i>	<i>R&amp;S</i>	<i>FSP30</i>	<i>100755</i>	<i>2013-11-21</i>	<i>2014-11-21</i>
<i>3m Anechoic chamber</i>	<i>ETS</i>	<i>RFD-F-100</i>	<i>3187</i>	<i>2013-05-27</i>	<i>2014-05-27</i>

*Note: All testing were performed using internationally recognized standards. All test instruments were calibrated and traceable to the National Institute of Standards and Technology (NIST).*

**TESTED BY:** *Jeneran* *ECMG*  
*COMPANY NAME*  
*ENGINEER*

**REVIEWED BY:** *Jeneran* *ECMG*  
*COMPANY NAME*  
*SENIOR ENGINEER*



***Radiated Emission Test Set-up (30 - 1,000MHz)***



***Radiated Emission Test Set-up (1-25GHz)***

***\*\*\* End of Report \*\*\****