

For user's safety, please read this manual before using the headset.

The following matters should be paid attention to when using headset :

Please choose a proper volume when hearing the headset. It is also important to control the hearing time for your ears health.

Please do not turn the volume too high, otherwise you may not hear the voice around you. If the volume is too high it may appear tinnitus, in which case please reduce the volume to protect your hearing.

If the environment is potentially dangerous, please stop using the headset

Don't listen to the music while driving.

Use dry soft cloth to clean the headset! Should avoid the headset into the water, that will cause headset damage.

If you feel obvious discomfort, stimulation, or other adverse reaction when using the headset, should immediately stop using it.

The headset should not be stored or used in temperature below 15° c (15° F) or higher than 55° c (131° F), otherwise will reduce headset or battery life.

(1)

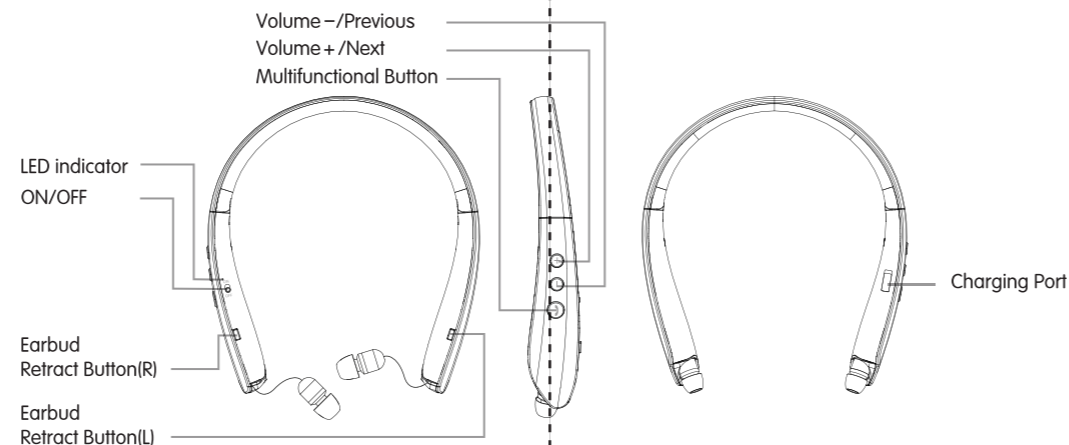
Charging and Battery:

Before charge this headset with charging cable, please check whether the charge cable is original.

Warning:

please charge the headsets with original charging cable, it may damage the battery or the headset if you are using improper charging cable. This headset has built-in rechargeable battery, so do not attempt to remove the battery from the headset to avoid damaging it.

1. Before charging, it's better to turn off the headset.
2. Insert the USB charging cable to earpiece jack, the other end of the USB port into the USB charger or any other devices to start charging. The red light flashing indicates it is charging.



(2)

3. It needs about 3.5 hours for fully charging, the red light goes off when fully charged.

Package content:

- Headset 1pcs
- USB charging cable 1pcs
- Ear caps 2pcs
- User Manual 1pcs

ON/OFF

1. Switch the button to "ON", the headset will turn on with vibration and prompt "Power On" the red and blue indicator light are flashing alternately which means the headset is entering into pairing mode and prompt "Ready to pair".
2. Switch to OFF to turn off the headset, it will prompt "Power OFF".

(3)

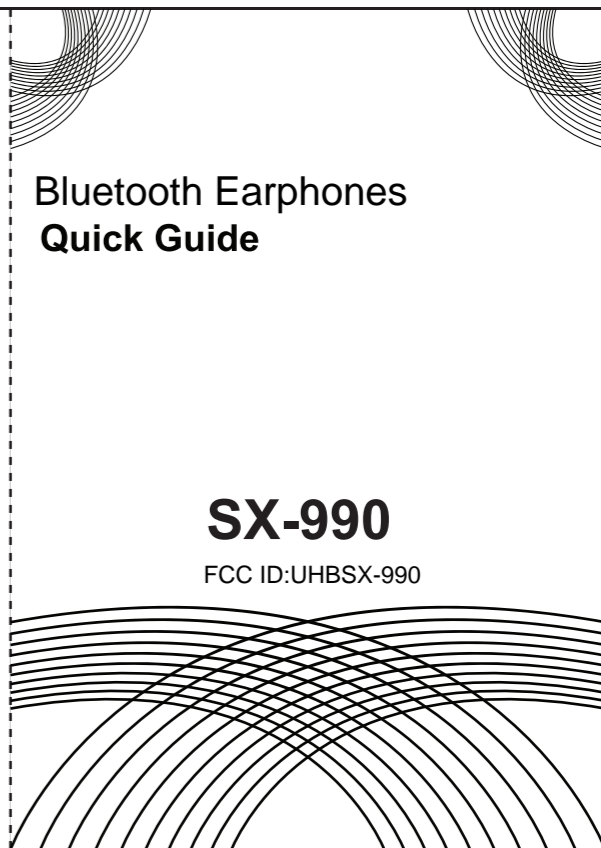
Bluetooth connection steps:

1. Please keep your headset and mobile phone as close as you can, within 1 meter.
2. Switch to "ON", it will prompt "Ready to pair" after 5 Seconds, the red and blue lights flash alternately when headset is ready for pairing.
3. Turn on "Bluetooth" in setting (your device) and find headset name SX-990.
4. Click SX-990, Bluetooth headset gets connected with your device automatically, and prompt "Pairing completed" and also will prompt "Device connected" when successfully connected with SX-990. Some may require pass code which is 0000.

Pair the headset with 2 mobile phones

1. After successfully paired with a mobile phone, close the Bluetooth function of the mobile phone, and switch the button of SX-990 to OFF.
2. Same procedure to get the 2nd mobile phone paired with the Bluetooth headset.
3. Turn on the Bluetooth function of the 1st mobile phone; choose "SX-990" to finish the pairing status with the 2nd mobile phone.

(4)



Note:

1、With your previously paired device's Bluetooth turned on and in range, turn on SX-990. The headset will automatically reconnect to the same Bluetooth device that connected last time. If you have a previously paired device that does not auto-reconnect, navigate to the Bluetooth settings menu on your device, turn on the Bluetooth feature, and select "SX-990" from your list of paired Bluetooth devices.

2、Pairing time exceeds 3 minutes, SX-990 will automatically shut down. If the headset are back to the effective distance in 3 minutes, it will automatically reconnect with the last connected device.

3、If connected with two mobile phones, only one mobile phone supports wireless music. Pause music on one mobile phone, the music on another mobile will play again. You can start conversation on both mobile phones. Battery check up on iPhone.

Answer & End call / Incoming call vibration remind

Answer phone call :

When there is an incoming call, the headset will prompt "Incoming call" with vibration. Phone number "134....." will be broadcasted. Click MFB to answer or just operate on your mobile phone.

End Call :

Press the MFB button to hang up calls, or directly hang up on your mobile phone, it will prompt "Call ended".

(5)

Reject call :

When there is an incoming call, headset will broadcast the phone number with vibration. Double click the MFB to reject or just reject it on your mobile phone, it will prompt "Call rejected".

Last number redial :

Double click MFB.

Call Transfer :

Double click the volume "—" when calling to have call transferred between phone and headset.

Power prompt :

When the battery power is too low, the headset will prompt "Battery low".

Voice Dial :

Unlock the mobile phone and double click the volume "—" to launch the voice dial, it will prompt "Voice Dial", and then just speak the people's name who you want to call. This function only works if your mobile phone support it.

Play/Pause/Tracks

During music playing, single click MFB to pause music, and click MFB again to back to play.

During music playing, single click "+ / -" to change songs.

During the call or listening to music, long press "+" or "-" button to adjust the volume.

(6)

Mobile phone lost indicator with headset

When the headset is connected with smart phone, if the distance between device and headset is out of 10 m, headset will prompt "Device disconnected" if comes back to the working distance within 3 min, headset will reconnect automatically with your mobile phone. If not comes back around working distance in 10 min, headset will power off. Please switch the button to OFF and then to ON to wake up the headset to back to work.

Restore Factory Settings

Long press the MFB and "+" simultaneously when turn on the headset.

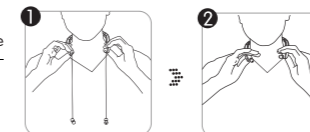
Technical Index

- Correspond with : Bluetooth V4.1
- Support: HSP、HFP、A2DP、AVRCP
- Transmitting Power: Class2
- Working Distance: ≤10m
- Frequency Range: 2.4026GHz-2.480GHz
- Charging Time: ≤ 3.5hours
- Talk Time: ≥18 hours
- Music Time: ≥16 hours
- Standby time: ≥300 hours
- Net Weight:74g

(7)

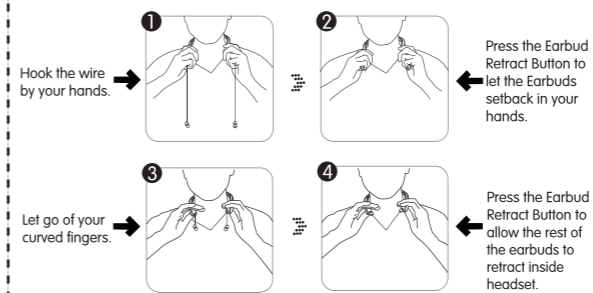
Tips:

Wrong way of setting back the wire
Press the Earbud Retract Button directly. In this way, the earbuds will hit the headset aggressively.



Correct way of setting back the wire

In order to prolong the working life of the headset, please set back the wire slowly, and follow the steps shown below.



(8)



Product picture in this manual is for demonstration purpose. Actual product may be different.

NOTE:

Changes or modifications not expressly approved by the party responsible for compliance could void the user's authority to operate the equipment. This device complies with Part 15 of the FCC Rules. Operation is subject to the following two conditions:

- (1) this device may not cause harmful interference, and
- (2) this device must accept any interference received, including interference that may cause undesired operation.