
FCC Test Report

Report No.: AGC00053170602FE03

FCC ID : UHBSX-805
APPLICATION PURPOSE : Original Equipment
PRODUCT DESIGNATION : Foldable Neckband Speaker
BRAND NAME : Suicen
MODEL NAME : SX-805
CLIENT : Shenzhen Shuaixian Electronic Equipment Co., Ltd.
DATE OF ISSUE : Jun.23, 2017
STANDARD(S) : FCC Part 15 Subpart C Section 15.249
TEST PROCEDURE(S)
REPORT VERSION : V1.0

Attestation of Global Compliance (Shenzhen) Co., Ltd



CAUTION:

This report shall not be reproduced except in full without the written permission of the test laboratory and shall not be quoted out of context.



Report Revise Record

Report Version	Revise Time	Issued Date	Valid Version	Notes
V1.0	/	Jun.23, 2017	Valid	Original Report

TABLE OF CONTENTS

1. VERIFICATION OF CONFORMITY	4
2. GENERAL INFORMATION	5
2.1. PRODUCT DESCRIPTION	5
2.2. TABLE OF CARRIER FREQUENCYS	5
3. MEASUREMENT UNCERTAINTY	6
4. DESCRIPTION OF TEST MODES	6
5. SYSTEM TEST CONFIGURATION	8
5.1. CONFIGURATION OF EUT SYSTEM.....	8
5.2. EQUIPMENT USED IN EUT SYSTEM.....	8
5.3. SUMMARY OF TEST RESULTS.....	8
6. TEST FACILITY	9
7. TEST METHOD	9
8. ALL TEST EQUIPMENT LIST	9
9. RADIATED EMISSION	11
9.1TEST LIMIT.....	11
9.2. MEASUREMENT PROCEDURE.....	12
9.3. TEST SETUP.....	14
9.4. TEST RESULT	16
10. BAND EDGE EMISSION	32
10.1. MEASUREMENT PROCEDURE.....	32
10.2 TEST SETUP	32
10.3 RADIATED TEST RESULT	33
11. 20DB BANDWIDTH	37
11.1. MEASUREMENT PROCEDURE	37
11.2. TEST SET-UP	37
11.3. LIMITS AND MEASUREMENT RESULTS	37
12. FCC LINE CONDUCTED EMISSION TEST	44
12.1. LIMITS OF LINE CONDUCTED EMISSION TEST.....	44
12.2. BLOCK DIAGRAM OF LINE CONDUCTED EMISSION TEST.....	44
12.3. PRELIMINARY PROCEDURE OF LINE CONDUCTED EMISSION TEST	45
12.4. FINAL PROCEDURE OF LINE CONDUCTED EMISSION TEST.....	45
12.5. TEST RESULT OF LINE CONDUCTED EMISSION TEST.....	46
APPENDIX A: PHOTOGRAPHS OF TEST SETUP	48
APPENDIX B: PHOTOGRAPHS OF EUT	51

1. VERIFICATION OF CONFORMITY

Applicant	Shenzhen Shuaixian Electronic Equipment Co., Ltd.
Address	No.10 Lane 3, Longxing Rd., Dakang Long Village, Henggang Town, Longgang Dist., Shenzhen, China
Manufacturer	Shenzhen Shuaixian Electronic Equipment Co., Ltd.
Address	No.10 Lane 3, Longxing Rd., Dakang Long Village, Henggang Town, Longgang Dist., Shenzhen, China
Product Designation	Foldable Neckband Speaker
Brand Name	Suicen
Test Model	SX-805
Date of test	Jun.12, 2017 to Jun.14, 2017
Deviation	None
Condition of Test Sample	Normal
Report Template	AGCRT-US-BR/RF

We hereby certify that:

The above equipment was tested by Dongguan Precise Testing Service Co., Ltd. The test data, the energy emitted by the sample tested as described in this report is in compliance with the requirements of FCC Rules Part 15.249.

Tested By 
Henry Zhang(Zhang Zhuorui) Jun.14, 2017

Reviewed By 
Forrest Lei(Lei Yonggang) Jun.23, 2017

Approved By 
Solger Zhang(Zhang Hongyi)
Authorized Officer Jun.23, 2017

2. GENERAL INFORMATION

2.1. PRODUCT DESCRIPTION

A major technical description of EUT is described as following

Operation Frequency	2.402 GHz to 2.480GHz
RF Output Power	0.18dBm(Max EIRP Power=Max radiation field-95.2)
Bluetooth Version	V4.1
Modulation	GFSK, π /4-DQPSK, 8DPSK
Number of channels	79
Hardware Version	SX-805-MAIN-V2.0
Software Version	v1.0
Antenna Designation	PCB Antenna
Antenna Gain	0dBi
Power Supply	DC 3.7V by battery
Note:	
1. The USB port only be used for charging and can't be used to transfer data with PC.	
2. The EUT didn't support BLE.	

2.2. TABLE OF CARRIER FREQUENCIES

BR/EDR Channel List

Frequency Band	Channel Number	Frequency
2400~2483.5MHz	0	2402MHz
	1	2403MHz
	:	:
	38	2440 MHz
	39	2441 MHz
	40	2442 MHz
	:	:
	77	2479 MHz
	78	2480 MHz

3. MEASUREMENT UNCERTAINTY

The reported uncertainty of measurement $y \pm U$, where expanded uncertainty U is based on a standard uncertainty multiplied by a coverage factor of $k=2$, providing a level of confidence of approximately 95 %.

No.	Item	Uncertainty
1	Conducted Emission Test	$\pm 3.18\text{dB}$
2	All emissions, radiated	$\pm 3.91\text{dB}$
3	Temperature	$\pm 0.5^\circ\text{C}$
4	Humidity	$\pm 2\%$

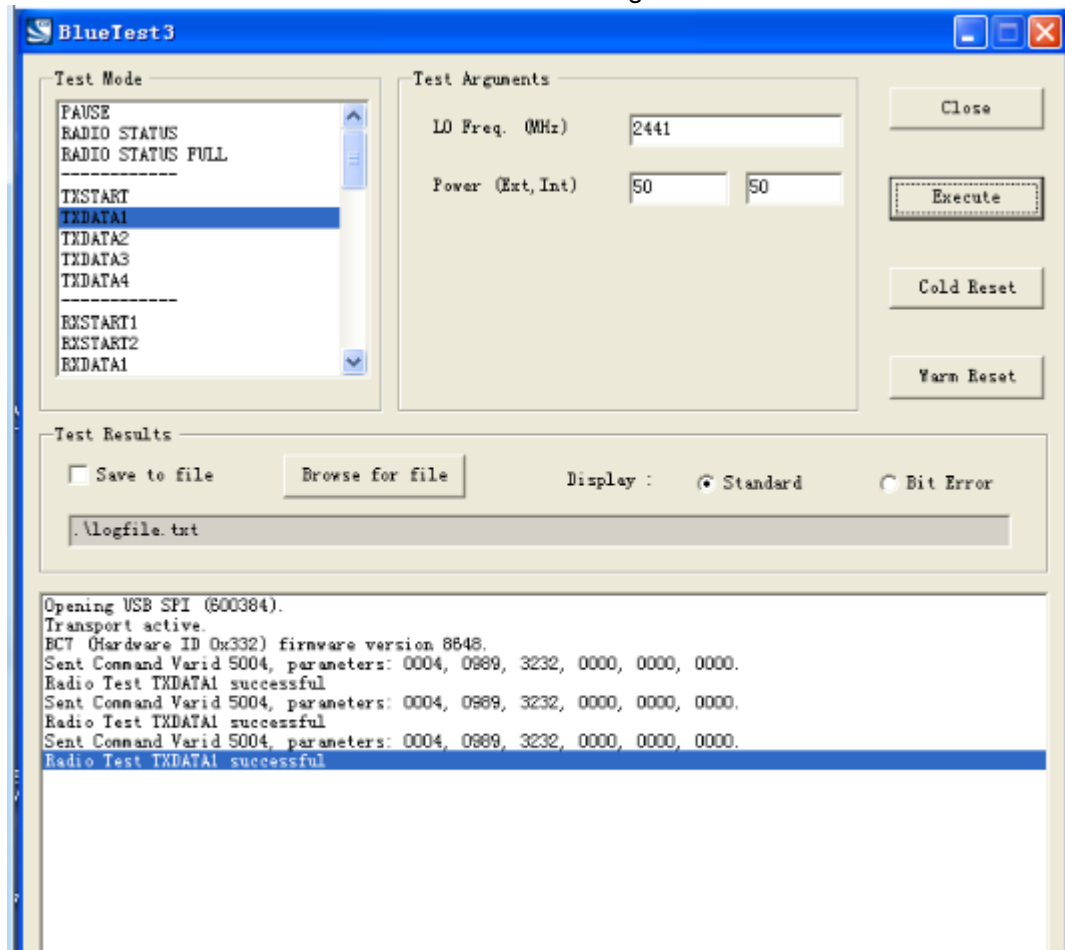
4. DESCRIPTION OF TEST MODES

NO.	TEST MODE DESCRIPTION
1	Low channel TX(GFSK)
2	Middle channel TX (GFSK)
3	High channel TX (GFSK)
4	Low channel TX($\pi/4$ -DQPSK)
5	Middle channel TX($\pi/4$ -DQPSK)
6	High channel TX ($\pi/4$ -DQPSK)
7	Low channel TX(8DPSK)
8	Middle channel TX (8DPSK)
9	High channel TX (8DPSK)
10	BT Link with charging
11	BT Link

Note:

1. All the test modes can be supply by battery, only the result of the worst case was recorded in the report, if no other cases.
2. For Radiated Emission, 3axis were chosen for testing for each applicable mode.
3. The EUT used fully-charged battery when tested.

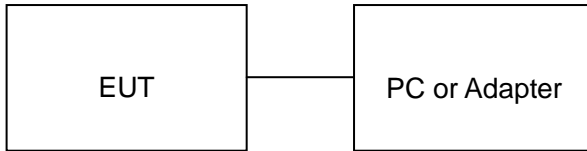
Software Setting



5. SYSTEM TEST CONFIGURATION

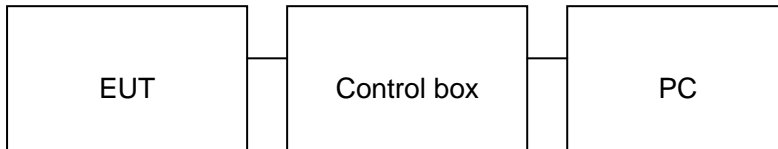
5.1. CONFIGURATION OF EUT SYSTEM

Configure 1: (Normal hopping)



Note: Owing to the EUT has own battery, Testing will be performed while PC or adapter remove.

Configure 2: (Control continuous TX)



5.2. EQUIPMENT USED IN EUT SYSTEM

ITEM	EQUIPMENT	MFR/BRAND	MODEL/TYPE NO.	REMARK
1	Foldable Neckband Speaker	Suicen	SX-805	EUT
2	Battery	WZ	802020	Accessory
3	PC	Sony	E1412AYCW	A.E
4	PC Adapter	Sony	VGP-AC19V36	A.E
5	Control box	CSR	USB_SPI_TOOLS	A.E
6	Adapter	IPRO	NTR-S01	A.E
7	USB Cable	N/A	1.0m Unshielded	A.E

5.3. SUMMARY OF TEST RESULTS

FCC RULES	DESCRIPTION OF TEST	RESULT
§15.249(a) §15.209	Radiated Emission	Compliant
§15.249(d)	Band Edges	Compliant
§15.207	Conduction Emission	Compliant
§15.215	Bandwidth	Compliant

6. TEST FACILITY

Site	Dongguan Precise Testing Service Co., Ltd.
Location	Building D,Baoding Technology Park,Guangming Road2,Dongcheng District, Dongguan, Guangdong, China,
FCC Registration No.	371540
Description	The test site is constructed and calibrated to meet the FCC requirements in documents ANSI C63.4:2014.

7. TEST METHOD

All measurements contained in this report were conducted with ANSI C63.10-2013

8. ALL TEST EQUIPMENT LIST

FOR RADIATED EMISSION TEST (BELOW 1GHz)

Radiated Emission Test Site					
Name of Equipment	Manufacturer	Model Number	Serial Number	Last Calibration	Due Calibration
EMI Test Receiver	ROHDE & SCHWARZBECK	ESCI	101417	July 4, 2016	July 3, 2017
Trilog Broadband Antenna (25M-1GHz)	SCHWARZBECK	VULB9160	9160-3355	July 4, 2016	July 3, 2017
Signal Amplifier	SCHWARZBECK	BBV 9475	9745-0013	July 4, 2016	July 3, 2017
RF Cable	SCHWARZBECK	AK9515E	96221	July 4, 2016	July 3, 2017
MULTI-DEVICE Positioning Controller	MAX-FULL	MF-7802	MF780208339	N/A	N/A
Active loop antenna (9K-30MHz)	SCHWARZBECK	FMZB1519	1519-038	June 6, 2017	June 5, 2018
Spectrum analyzer	AGILENT	E4407B	MY46185649	June 6, 2017	June 5, 2018
Radiation Cable 1	MXT	RS1	R005	June 6, 2017	June 5, 2018
Radiation Cable 2	MXT	RS1	R006	June 6, 2017	June 5, 2018
temporary antenna connector	N/A	S100	--	July 4, 2016	July 3, 2017

FOR RADIATED EMISSION TEST (1GHz ABOVE)

Radiated Emission Test Site					
Name of Equipment	Manufacturer	Model Number	Serial Number	Last Calibration	Due Calibration
EMI Test Receiver	ROHDE & SCHWARZBECK	ESCI	101417	July 4, 2016	July 3, 2017
Horn Antenna (1G-18GHz)	SCHWARZBECK	BBHA9120D	9120D-1246	July 11, 2016	July 10, 2017
Spectrum Analyzer	AGILENT	E4411B	MY4511453	July 4, 2016	July 3, 2017
Signal Amplifier	SCHWARZBECK	BBV 9718	9718-269	July 7, 2016	July 6, 2017
RF Cable	SCHWARZBECK	AK9515H	96220	July 8, 2016	July 7, 2017
MULTI-DEVICE Positioning Controller	MAX-FULL	MF-7802	MF780208339	N/A	N/A
Horn Ant (18G-40GHz)	SCHWARZBECK	BBHA 9170	9170-181	June 6, 2017	June 5, 2018
Radiation Cable 1	MXT	RS1	R005	June 6, 2017	June 5, 2018
Radiation Cable 2	MXT	RS1	R006	June 6, 2017	June 5, 2018

Conducted Emission Test Site					
Name of Equipment	Manufacturer	Model Number	Serial Number	Last Calibration	Due Calibration
EMI Test Receiver	ROHDE & SCHWARZBECK	ESCI	101417	July 4, 2016	July 3, 2017
Artificial Mains Network	NARDA	L2-16B	000WX31025	July 8, 2016	July 7, 2017
Artificial Mains Network (AUX)	NARDA	L2-16B	000WX31026	July 8, 2016	July 7, 2017
RF Cable	SCHWARZBECK	AK9515E	96222	July 4, 2016	July 3, 2017
Shielded Room	CHENGYU	843	PTS-002	June 6, 2017	June 5, 2018
Conduction Cable	MXT	SE1	S003	June 6, 2017	June 5, 2018

9. RADIATED EMISSION

9.1 TEST LIMIT

Standard FCC15.249

Fundamental Frequency	Field Strength of Fundamental (millivolts/meter)	Field Strength of Harmonics (microvolts/meter)
900-928MHz	50	500
2400-2483.5MHz	50	500
5725-5875MHz	50	500
24.0-24.25GHz	250	2500

Standard FCC 15.209

Frequency (MHz)	Distance Meters	Field Strengths Limit	
		μ V/m	dB(μ V)/m
0.009 ~ 0.490	300	2400/F(kHz)	---
0.490 ~ 1.705	30	24000/F(kHz)	---
1.705 ~ 30	30	30	---
30 ~ 88	3	100	40.0
88 ~ 216	3	150	43.5
216 ~ 960	3	200	46.0
960 ~ 1000	3	500	54.0
Above 1000	3	Other:74.0 dB(μ V)/m (Peak) 54.0 dB(μ V)/m (Average)	

Remark: (1) Emission level $\text{dB}\mu$ V = 20 log Emission level μ V/m
(2) The smaller limit shall apply at the cross point between two frequency bands.
(3) Distance is the distance in meters between the measuring instrument, antenna and the closest point of any part of the device or system.

9.2. MEASUREMENT PROCEDURE

1. The measuring distance of 3m shall be used for measurements. The EUT was placed on the top of a rotating table 0.8 meter above the ground at a 3 meter semi-anechoic chamber. The table was rotated 360 degrees to determine the position of the highest radiation(Below 1GHz)
2. The measuring distance of 3m shall used for measurements. The EUT was placed on the top of a rotating table 1.5 meter above the ground at a 3 meter semi-anechoic chamber. The table was rotated 360 degrees to determine the position of the highest radiation(Above 1GHz)
3. The height of the test antenna shall vary between 1m to 4m.Both horizontal and vertical polarization Of the antenna are set to make the measurement.
4. The initial step in collecting radiated emission data is a receive peak detector mode. Pre-scanning the measurement frequency range. Significant peaks are then marked and then Quasi Peak detector mode re-measured.
5. All readings are peak unless otherwise stated QP in column of Note. Peak denoted that the Peak reading compliance with the QP limits and then QP Mode measurement didn't perform(Below 1GHz)
6. All readings are Peak mode value unless otherwise stated AVG in column of Note. If the Peak mode measured value compliance with the Peak limits and lower than AVG Limits, the EUT shall be deemed to meet Peak & AVG limits and then only Peak mode was measured, but AVG mode didn't perform.(Above 1GHz)

The following table is the setting of spectrum analyzer and receiver.

Spectrum Parameter	Setting
Start ~Stop Frequency	9KHz~150KHz/RB 200Hz for QP
Start ~Stop Frequency	150KHz~30MHz/RB 9KHz for QP
Start ~Stop Frequency	30MHz~1000MHz/RB 120KHz for QP
Start ~Stop Frequency	1GHz~26.5GHz RBW 2MHz/VBW 6MHz for Peak, RBW 1.5MHz/10Hz for Average
Receiver Parameter	Setting
Start ~Stop Frequency	9KHz~150KHz/RB 200Hz for QP
Start ~Stop Frequency	150KHz~30MHz/RB 9KHz for QP
Start ~Stop Frequency	30MHz~1000MHz/RB 120KHz for QP

9.3. TEST SETUP

RADIATED EMISSION TEST SETUP BELOW 30MHz



RADIATED EMISSION TEST SETUP 30MHz-1000MHz



RADIATED EMISSION TEST SETUP ABOVE 1000MHz



9.4. TEST RESULT

(Worst modulation:GFSK)

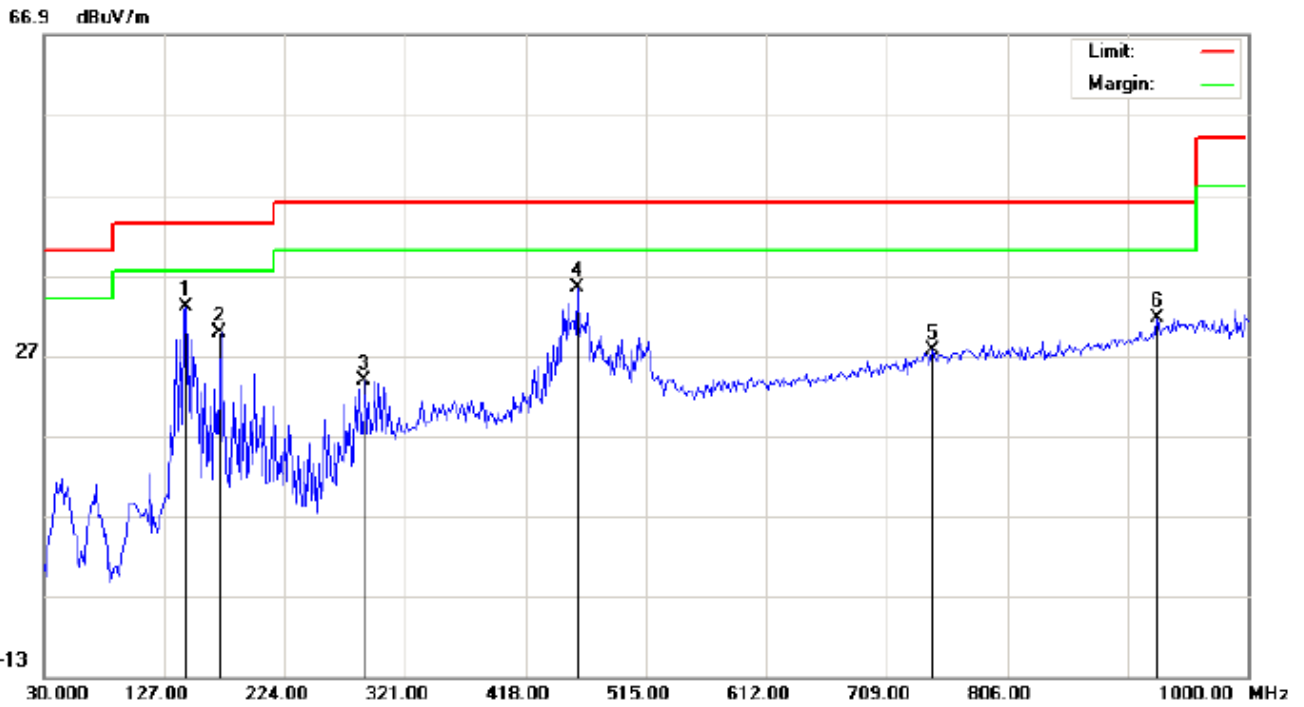
FOR BR/EDR

RADIATED EMISSION BELOW 30MHz

No emission found between lowest internal used/generated frequencies to 30MHz.

RADIATED EMISSION BELOW 1GHz

RADIATED EMISSION TEST- (30MHz-1GHz)-LOW CHANNEL-HORIZONTAL



Site: site #1	Polarization: <i>Horizontal</i>	Temperature: 22.4
Limit: FCC Class B 3M Radiation	Power:	Humidity: 52.5 %
EUT: Foldable Neckband Speaker	Distance:	
M/N: SX-805		
Mode: Low Channel TX		
Note:		

No.	Mk	Freq.	Reading	Factor	Measurement	Limit	Over	Detector	Antenna Height	Table Degree	Comment
		MHz	dBuV	dB/m	dBuV/m	dBuV/m	dB		cm	degree	
1	*	144.7831	19.01	14.04	33.05	43.50	-10.45	peak			
2		172.2666	18.93	10.78	29.71	43.50	-13.79	peak			
3		288.6666	10.30	13.48	23.78	46.00	-22.22	peak			
4		460.0332	14.64	20.70	35.34	46.00	-10.66	peak			
5		746.1833	1.13	26.52	27.65	46.00	-18.35	peak			
6		927.2500	2.26	29.37	31.63	46.00	-14.37	peak			

RESULT: PASS

RADIATED EMISSION TEST- (30MHz-1GHz)-LOW CHANNEL -VERTICAL



Site: site #1
Limit: FCC Class B 3M Radiation
EUT: Foldable Neckband Speaker
M/N: SX-805
Mode: Low Channel TX
Note:

Polarization: *Vertical*
Power:
Distance:

Temperature: 22.4
Humidity: 52.5 %

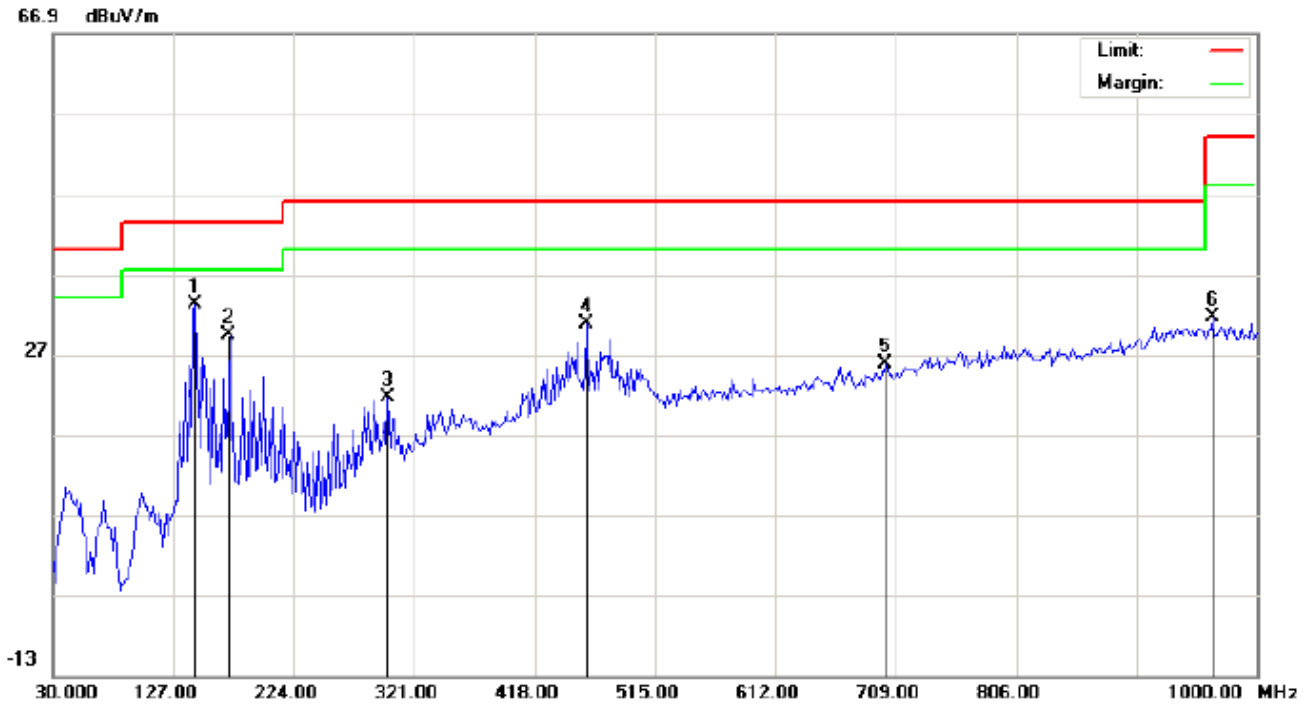
No.	Mk	Freq.	Reading	Factor	Measurement	Limit	Over	Detector	Antenna Height	Table Degree	Comment
		MHz	dBuV	dB/m	dBuV/m	dBuV/m	dB		cm	degree	
1	*	151.2500	16.09	15.27	31.36	43.50	-12.14	peak			
2		275.7332	4.03	14.68	18.71	46.00	-27.29	peak			
3		354.9499	1.73	18.77	20.50	46.00	-25.50	peak			
4		468.1166	9.87	20.79	30.66	46.00	-15.34	peak			
5		772.0499	0.76	26.93	27.69	46.00	-18.31	peak			
6		954.7332	1.27	29.95	31.22	46.00	-14.78	peak			

RESULT: PASS

Note: 1. Factor=Antenna Factor + Cable loss, Margin=Measurement-Limit.

2. The "Factor" value can be calculated automatically by software of measurement system.

RADIATED EMISSION TEST- (30MHz-1GHz)-MIDDLE CHANNEL-HORIZONTAL



Site: site #1
 Limit: FCC Class B 3M Radiation
 EUT: Foldable Neckband Speaker
 M/N: SX-805
 Mode: Middle Channel TX
 Note:

Polarization: *Horizontal*
 Power:
 Distance:

Temperature: 22.4
 Humidity: 52.5 %

No.	Mk	Freq.	Reading	Factor	Measurement	Limit	Over	Detector	Antenna Height	Table Degree	Comment
		MHz	dBuV	dB/m	dBuV/m	dBuV/m	dB		cm	degree	
1	*	144.7831	19.18	14.04	33.22	43.50	-10.28	peak			
2		172.2666	18.68	10.78	29.46	43.50	-14.04	peak			
3		299.9832	6.16	15.41	21.57	46.00	-24.43	peak			
4		460.0332	10.08	20.70	30.78	46.00	-15.22	peak			
5		700.9166	0.65	25.22	25.87	46.00	-20.13	peak			
6		964.4333	1.78	29.86	31.64	54.00	-22.36	peak			

RESULT: PASS

RADIATED EMISSION TEST- (30MHz-1GHz)- MIDDLE CHANNEL –VERTICAL



Site: site #1
Limit: FCC Class B 3M Radiation
EUT: Foldable Neckband Speaker
M/N: SX-805
Mode: Middle Channel TX
Note:

Polarization: *Vertical*
Power:
Distance:

Temperature: 22.4
Humidity: 52.5 %

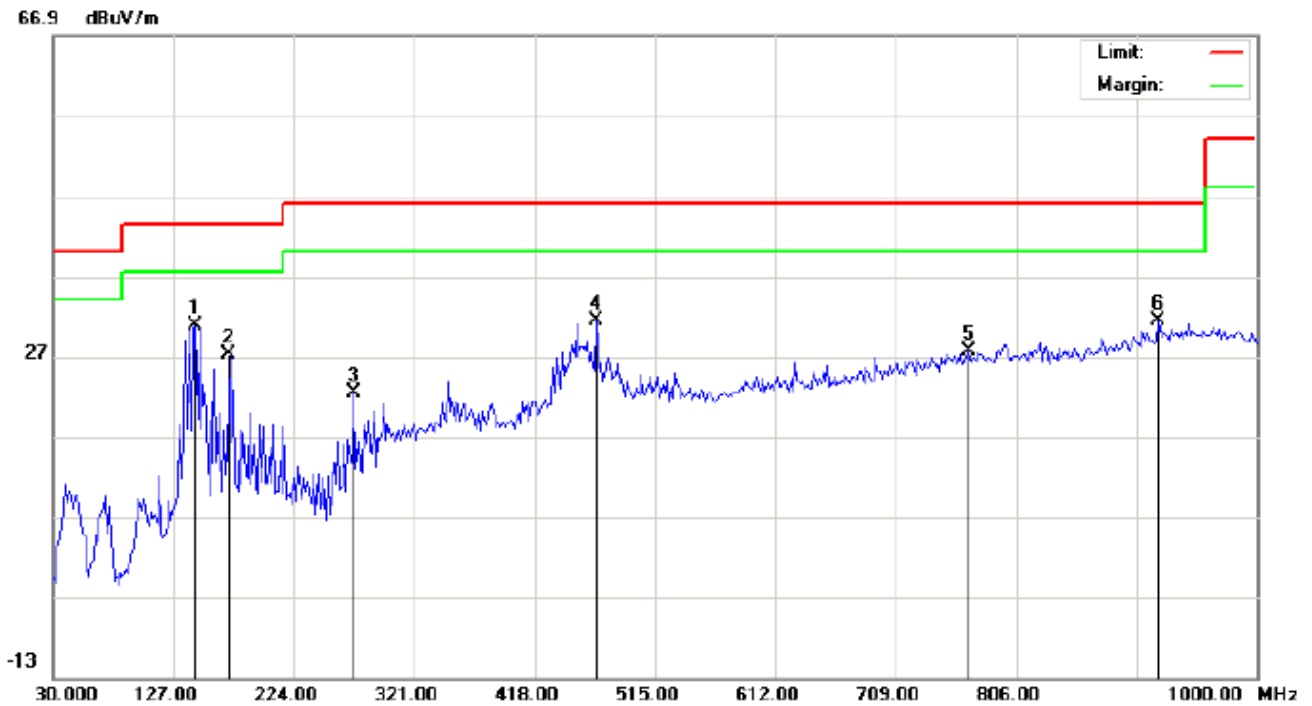
No.	Mk	Freq.	Reading	Factor	Measurement	Limit	Over	Detector	Antenna Height	Table Degree	Comment
		MHz	dBuV	dB/m	dBuV/m	dBuV/m	dB		cm	degree	
1	*	38.0833	6.36	19.06	25.42	40.00	-14.58	peak			
2		172.2666	12.09	14.56	26.65	43.50	-16.85	peak			
3		272.5000	6.21	14.58	20.79	46.00	-25.21	peak			
4		463.2667	7.32	20.73	28.05	46.00	-17.95	peak			
5		686.3667	0.84	24.82	25.66	46.00	-20.34	peak			
6		930.4832	1.90	29.46	31.36	46.00	-14.64	peak			

RESULT: PASS

Note: 1. Factor=Antenna Factor + Cable loss, Margin=Measurement-Limit.

2. The "Factor" value can be calculated automatically by software of measurement system.

RADIATED EMISSION TEST- (30MHz-1GHz)-HIGH CHANNEL-HORIZONTAL



Site: site #1
Limit: FCC Class B 3M Radiation
EUT: Foldable Neckband Speaker
M/N: SX-805
Mode: High Channel TX
Note:

Polarization: *Horizontal*
Power:
Distance:

Temperature: 22.4
Humidity: 52.5 %

No.	Mk	Freq.	Reading	Factor	Measurement	Limit	Over	Detector	Antenna Height	Table Degree	Comment
		MHz	dBuV	dB/m	dBuV/m	dBuV/m	dB		cm	degree	
1	*	144.7831	16.67	14.04	30.71	43.50	-12.79	peak			
2		172.2666	16.44	10.78	27.22	43.50	-16.28	peak			
3		272.5000	11.65	10.73	22.38	46.00	-23.62	peak			
4		468.1166	10.71	20.79	31.50	46.00	-14.50	peak			
5		767.2000	0.72	26.87	27.59	46.00	-18.41	peak			
6		920.7833	2.12	29.19	31.31	46.00	-14.69	peak			

RESULT: PASS

RADIATED EMISSION TEST- (30MHz-1GHz)-HIGH CHANNEL -VERTICAL



Site: site #1
 Limit: FCC Class B 3M Radiation
 EUT: Foldable Neckband Speaker
 M/N: SX-805
 Mode: High Channel TX
 Note:

Polarization: **Vertical**
 Power:
 Distance:

Temperature: 22.4
 Humidity: 52.5 %

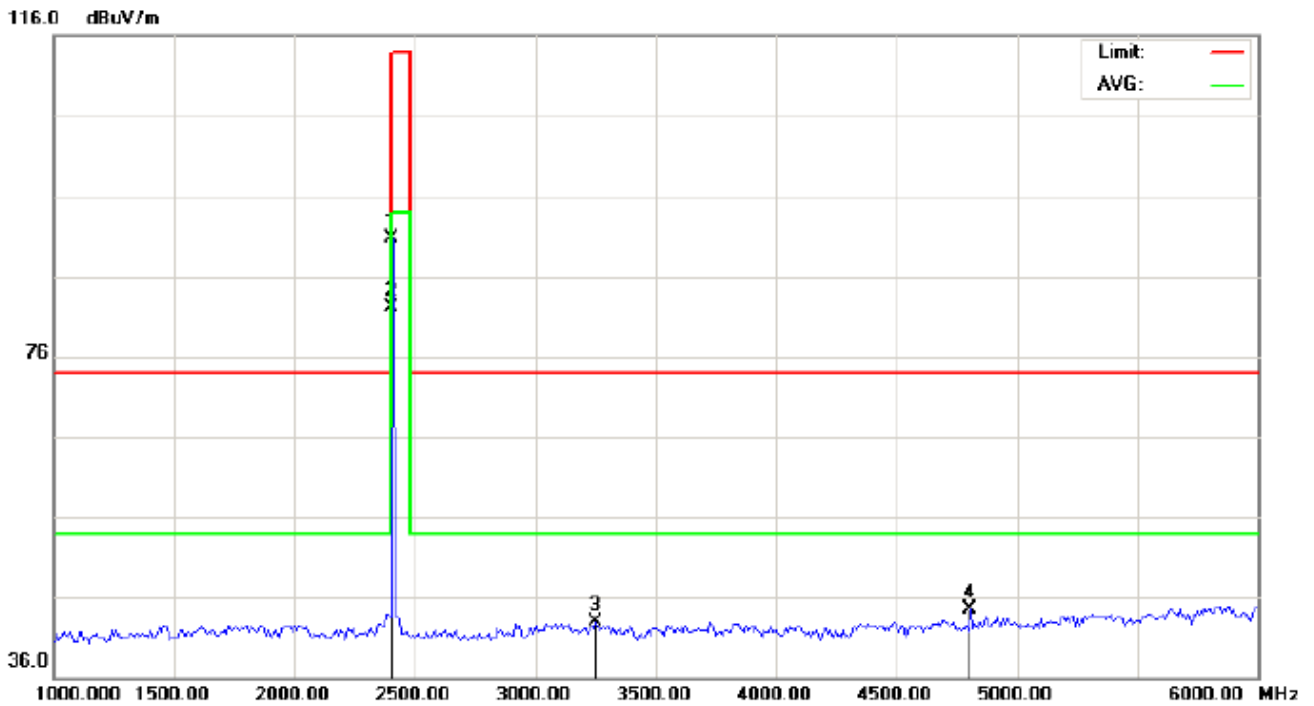
No.	Mk	Freq.	Reading	Factor	Measurement	Limit	Over	Detector	Antenna Height	Table Degree	Comment
		MHz	dBuV	dB/m	dBuV/m	dBuV/m	dB		cm	degree	
1	*	151.2500	15.72	15.27	30.99	43.50	-12.51	peak			
2		264.4166	5.00	14.34	19.34	46.00	-26.66	peak			
3		468.1166	8.24	20.79	29.03	46.00	-16.97	peak			
4		699.2999	0.11	25.17	25.28	46.00	-20.72	peak			
5		894.9166	3.99	28.48	32.47	46.00	-13.53	peak			
6		949.8832	2.13	30.00	32.13	46.00	-13.87	peak			

RESULT: PASS

Note: 1. Factor=Antenna Factor + Cable loss, Margin=Measurement-Limit.

2. The "Factor" value can be calculated automatically by software of measurement system.

RADIATED EMISSION TEST- (ABOVE 1GHz)-LOW CHANNEL- VERTICAL

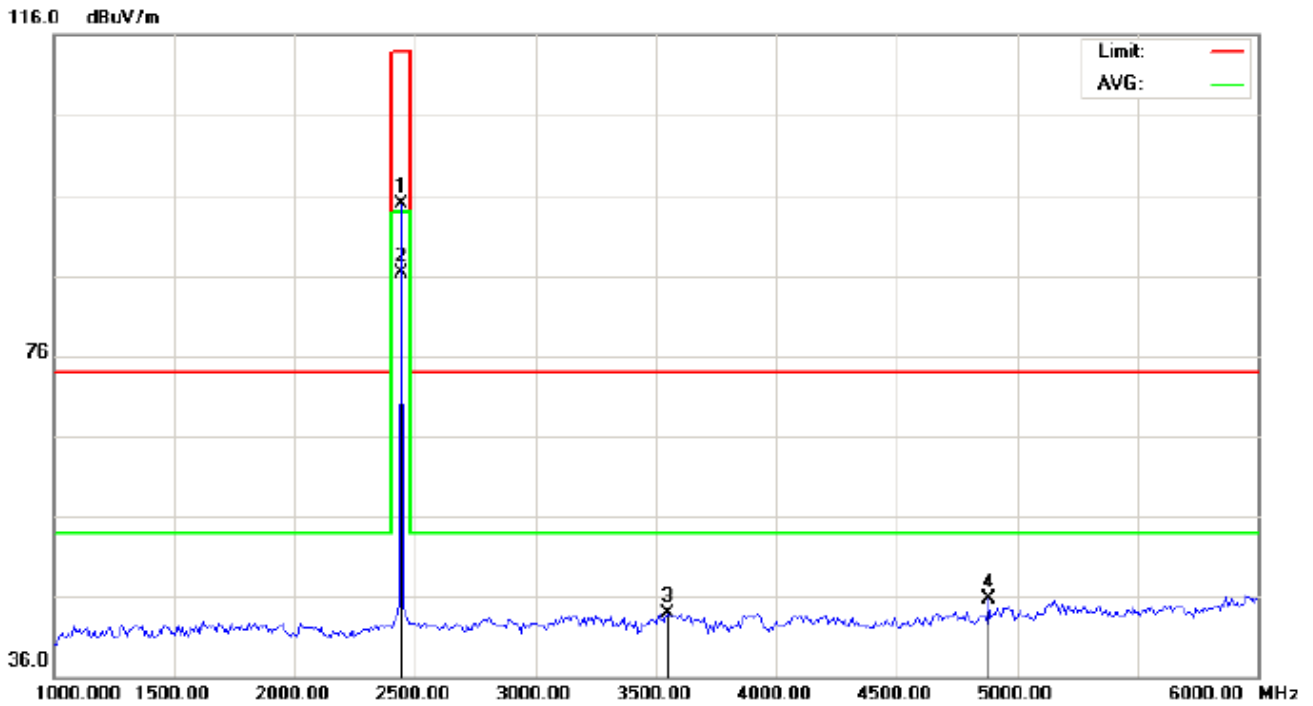


Site: site #1 Polarization: *Vertical* Temperature: 22.7
Limit: FCC Class B 3M Radiation above 1GHz(PK)- Power: Humidity: 53.6 %
EUT: Foldable Neckband Speaker Distance:
M/N: SX-805
Mode: Low Channel TX
Note:

No.	Mk	Freq.	Reading	Factor	Measurement	Limit	Over	Detector	Antenna	Table	Comment
		MHz	dBuV	dB/m	dBuV/m	dBuV/m	dB		Height	Degree	
									cm	degree	
1		2402.000	80.32	10.32	90.64	114.00	-23.36	peak			
2	*	2402.000	71.77	10.32	82.09	94.00	-11.91	AVG	100	43	
3		3250.000	31.03	11.87	42.90	74.00	-31.10	peak			
4		4804.000	36.88	7.69	44.57	74.00	-29.43	peak			

RESULT: PASS

RADIATED EMISSION TEST- (ABOVE 1GHz)-MIDDLE CHANNEL- VERTICAL

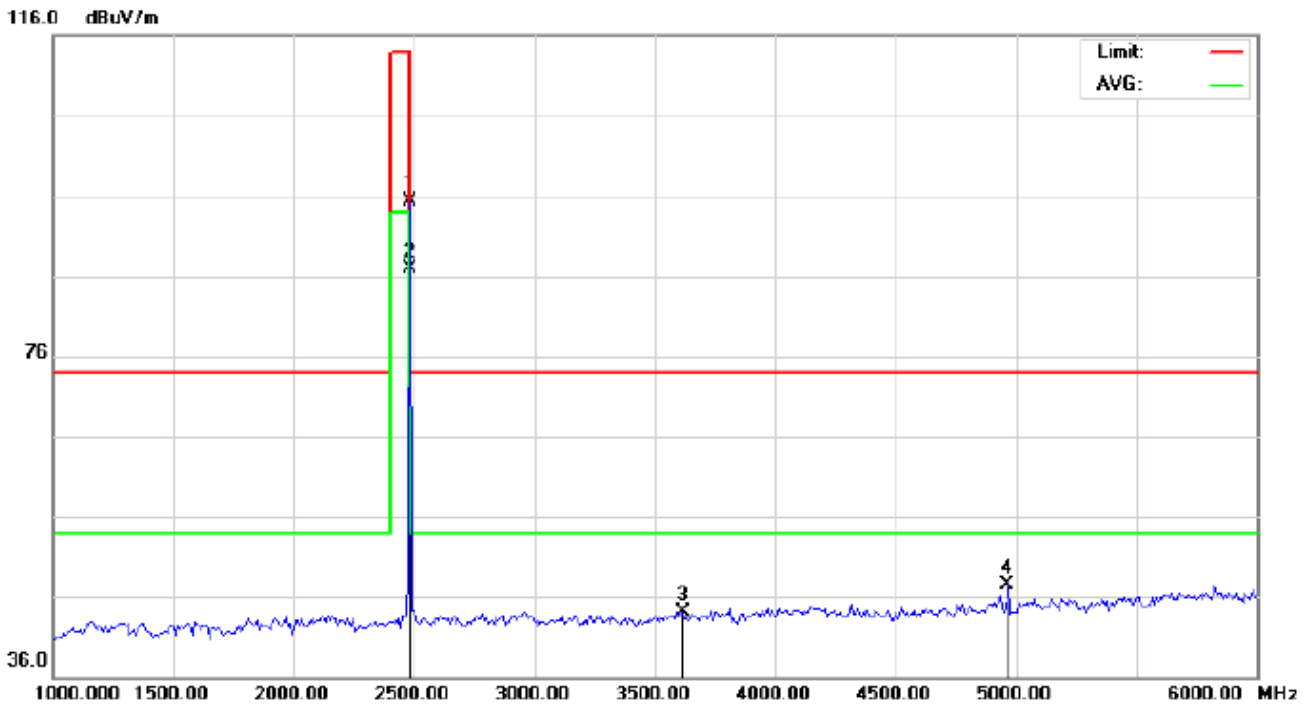


Site: site #1 Polarization: *Vertical* Temperature: 22.7
Limit: FCC Class B 3M Radiation above 1GHz(PK)- Power: Humidity: 53.6 %
EUT: Foldable Neckband Speaker Distance:
M/N: SX-805
Mode: Middle Channel TX
Note:

No.	Mk	Freq.	Reading	Factor	Measurement	Limit	Over	Detector	Antenna	Table	Comment
		MHz	dBuV	dB/m	dBuV/m	dBuV/m	dB		Height	Degree	
			dBuV	dB/m	dBuV/m	dBuV/m	dB		cm	degree	
1		2441.000	84.49	10.36	94.85	114.00	-19.15	peak			
2	*	2441.000	75.95	10.36	86.31	94.00	-7.69	AVG	100	42	
3		3550.000	31.49	12.42	43.91	74.00	-30.09	peak			
4		4882.000	37.81	7.89	45.70	74.00	-28.30	peak			

RESULT: PASS

RADIATED EMISSION TEST- (ABOVE 1GHz)-HIGH CHANNEL-HORIZONTAL



Site: site #1
Limit: FCC Class B 3M Radiation above 1GHz(PK)-
EUT: Foldable Neckband Speaker
M/N: SX-805
Mode: High Channel TX
Note:

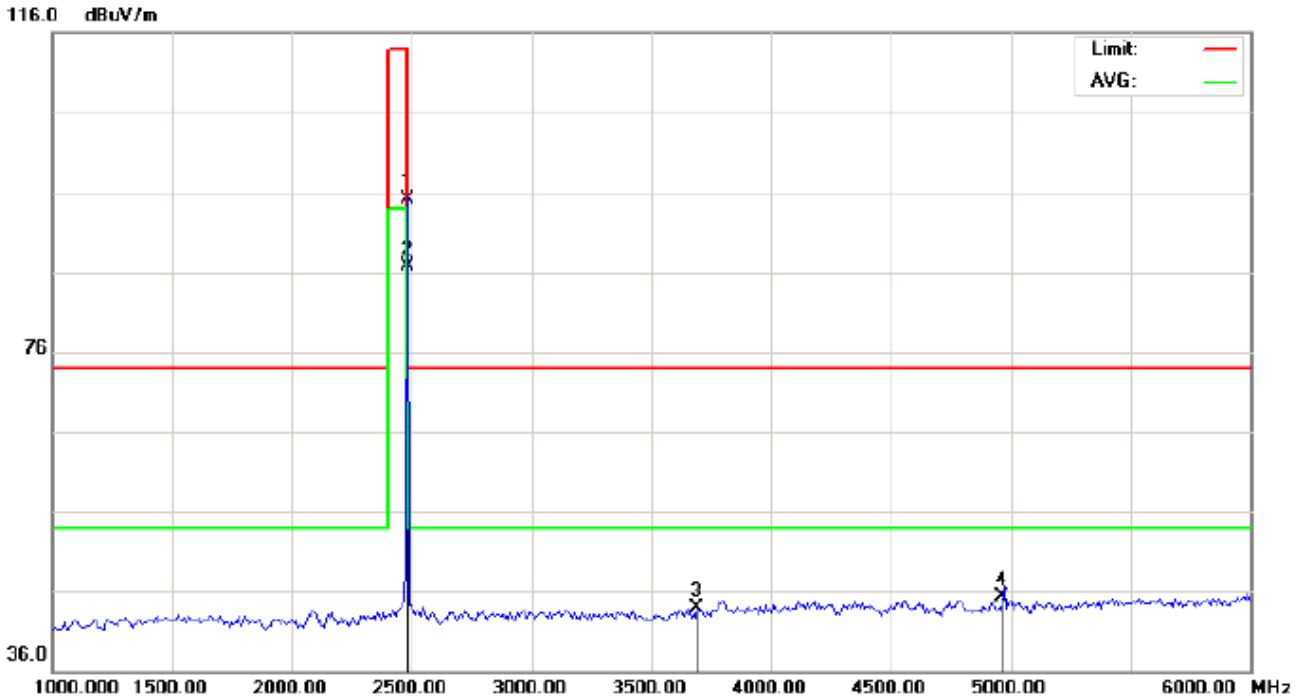
Polarization: *Horizontal*
Power:
Distance:

Temperature: 22.7
Humidity: 53.6 %

No.	Mk	Freq.	Reading	Factor	Measurement	Limit	Over	Detector	Antenna Height	Table Degree	Comment
		MHz	dBuV	dB/m	dBuV/m	dBuV/m	dB		cm	degree	
1		2480.000	84.97	10.41	95.38	114.00	-18.62	peak			
2	*	2480.000	76.46	10.41	86.87	94.00	-7.13	AVG	100	59	
3		3616.667	31.36	12.83	44.19	74.00	-29.81	peak			
4		4960.000	39.51	8.09	47.60	74.00	-26.40	peak			

RESULT: PASS

RADIATED EMISSION TEST- (ABOVE 1GHz)-HIGH CHANNEL- VERTICAL



Site: site #1
 Limit: FCC Class B 3M Radiation above 1GHz(PK)-
 EUT: Foldable Neckband Speaker
 M/N: SX-805
 Mode: High Channel TX
 Note:

Polarization: *Vertical*
 Power:
 Distance:

Temperature: 22.7
 Humidity: 53.6 %

No.	Mk	Freq.	Reading	Factor	Measurement	Limit	Over	Detector	Antenna Height	Table Degree	Comment
		MHz	dBuV	dB/m	dBuV/m	dBuV/m	dB		cm	degree	
1		2480.000	84.71	10.41	95.12	114.00	-18.88	peak			
2	*	2480.000	76.23	10.41	86.64	94.00	-7.36	AVG	100	43	
3		3691.667	30.61	13.29	43.90	74.00	-30.10	peak			
4		4960.000	37.16	8.09	45.25	74.00	-28.75	peak			

RESULT: PASS

Note: 6~25GHz at least have 20dB margin. No recording in the test report.

Factor=Antenna Factor + Cable loss - Amplifier gain, Margin=Measurement-Limit.

The "Factor" value can be calculated automatically by software of measurement system.

Field strength of the fundamental signal**1Mbps Result:****Peak value**

Frequency	Reading Level	Factor	Measurement	Limit	Over	Antenna
(MHz)	(dBuv)	(dB/m)	(dBuv/m)	(dBuv/m)	(dB)	Polarization
2402	80.57	10.32	90.89	114	-23.11	Horizontal
2402	80.32	10.32	90.64	114	-23.36	Vertical
2441	84.74	10.36	95.10	114	-18.90	Horizontal
2441	84.49	10.36	94.85	114	-19.15	Vertical
2480	84.97	10.41	95.38	114	-18.62	Horizontal
2480	84.71	10.41	95.12	114	-18.88	Vertical

Average value

Frequency	Reading Level	Factor	Measurement	Limit	Over	Antenna
(MHz)	(dBuv)	(dB/m)	(dBuv/m)	(dBuv/m)	(dB)	Polarization
2402	71.95	10.32	82.27	94	-11.73	Horizontal
2402	71.77	10.32	82.09	94	-11.91	Vertical
2441	76.26	10.36	86.62	94	-7.38	Horizontal
2441	75.95	10.36	86.31	94	-7.69	Vertical
2480	76.46	10.41	86.87	94	-7.13	Horizontal
2480	76.23	10.41	86.64	94	-7.36	Vertical

2Mbps Result:**Peak value**

Frequency	Reading Level	Factor	Measurement	Limit	Over	Antenna
(MHz)	(dBuv)	(dB/m)	(dBuv/m)	(dBuv/m)	(dB)	Polarization
2402	80.50	10.32	90.82	114	-23.18	Horizontal
2402	80.22	10.32	90.54	114	-23.46	Vertical
2441	84.67	10.36	95.03	114	-18.97	Horizontal
2441	84.43	10.36	94.79	114	-19.21	Vertical
2480	84.93	10.41	95.34	114	-18.66	Horizontal
2480	84.62	10.41	95.03	114	-18.97	Vertical

Average value

Frequency	Reading Level	Factor	Measurement	Limit	Over	Antenna
(MHz)	(dBuv)	(dB/m)	(dBuv/m)	(dBuv/m)	(dB)	Polarization
2402	71.87	10.32	82.19	94	-11.81	Horizontal
2402	71.70	10.32	82.02	94	-11.98	Vertical
2441	76.17	10.36	86.53	94	-7.47	Horizontal
2441	75.87	10.36	86.23	94	-7.77	Vertical
2480	76.40	10.41	86.81	94	-7.19	Horizontal
2480	76.18	10.41	86.59	94	-7.41	Vertical

3Mbps Result:**Peak value**

Frequency	Reading Level	Factor	Measurement	Limit	Over	Antenna
(MHz)	(dBuv)	(dB/m)	(dBuv/m)	(dBuv/m)	(dB)	Polarization
2402	80.46	10.32	90.78	114	-23.22	Horizontal
2402	80.13	10.32	90.45	114	-23.55	Vertical
2441	84.59	10.36	94.95	114	-19.05	Horizontal
2441	84.36	10.36	94.72	114	-19.28	Vertical
2480	84.87	10.41	95.28	114	-18.72	Horizontal
2480	84.52	10.41	94.93	114	-19.07	Vertical

Average value

Frequency	Reading Level	Factor	Measurement	Limit	Over	Antenna
(MHz)	(dBuv)	(dB/m)	(dBuv/m)	(dBuv/m)	(dB)	Polarization
2402	71.81	10.32	82.13	94	-11.87	Horizontal
2402	71.60	10.32	81.92	94	-12.08	Vertical
2441	76.11	10.36	86.47	94	-7.53	Horizontal
2441	75.81	10.36	86.17	94	-7.83	Vertical
2480	76.35	10.41	86.76	94	-7.24	Horizontal
2480	76.11	10.41	86.52	94	-7.48	Vertical

10. BAND EDGE EMISSION

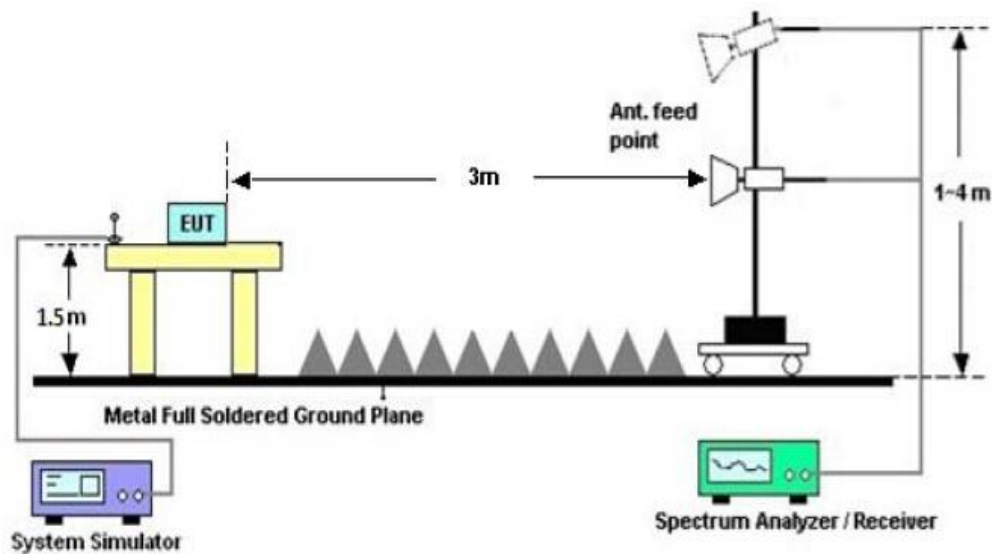
10.1. MEASUREMENT PROCEDURE

1. The EUT operates at hopping-off test mode. The lowest or highest channels are tested to verify the largest transmission and spurious emissions power at the continuous transmission mode.
2. Max hold the trace of the setup1, and the EUT operates at hopping-on test mode to verify the largest spurious emissions power.
3. Set the spectrum analyzer in the following setting in order to capture the lower and upper band-edges of the emission.

Start frequency(MHz)	Stop frequency(MHz)
2200	2405
2478	2500

10.2 TEST SETUP

RADIATED EMISSION TEST SETUP

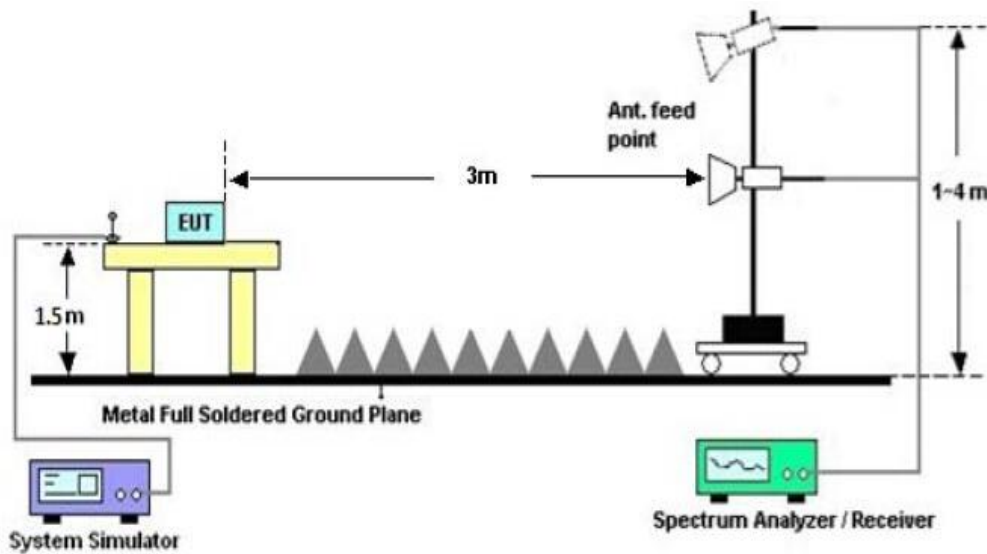


11. 20DB BANDWIDTH

11.1. MEASUREMENT PROCEDURE

1. Set the EUT Work on the top, the middle and the bottom operation frequency individually.
2. Set Span = approximately 2 to 3 times the 20 dB bandwidth, centered on a hopping channel
RBW \geq 1% of the 20 dB bandwidth, VBW \geq RBW; Sweep = auto; Detector function = peak
3. Set SPA Trace 1 Max hold, then View.

11.2. TEST SET-UP

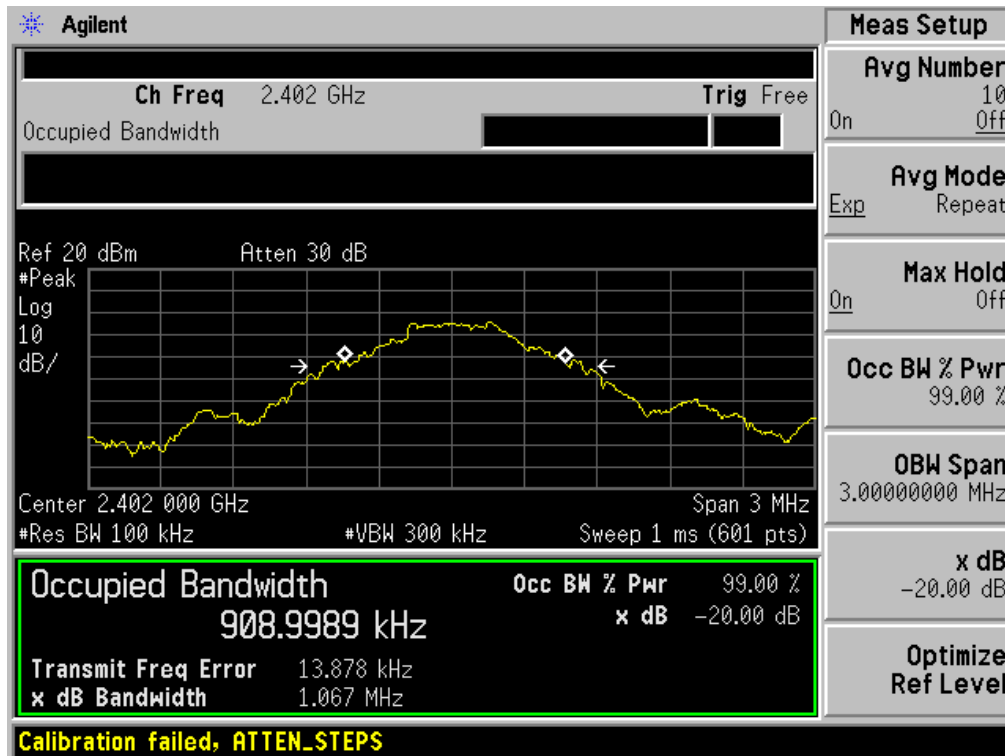


11.3. LIMITS AND MEASUREMENT RESULTS

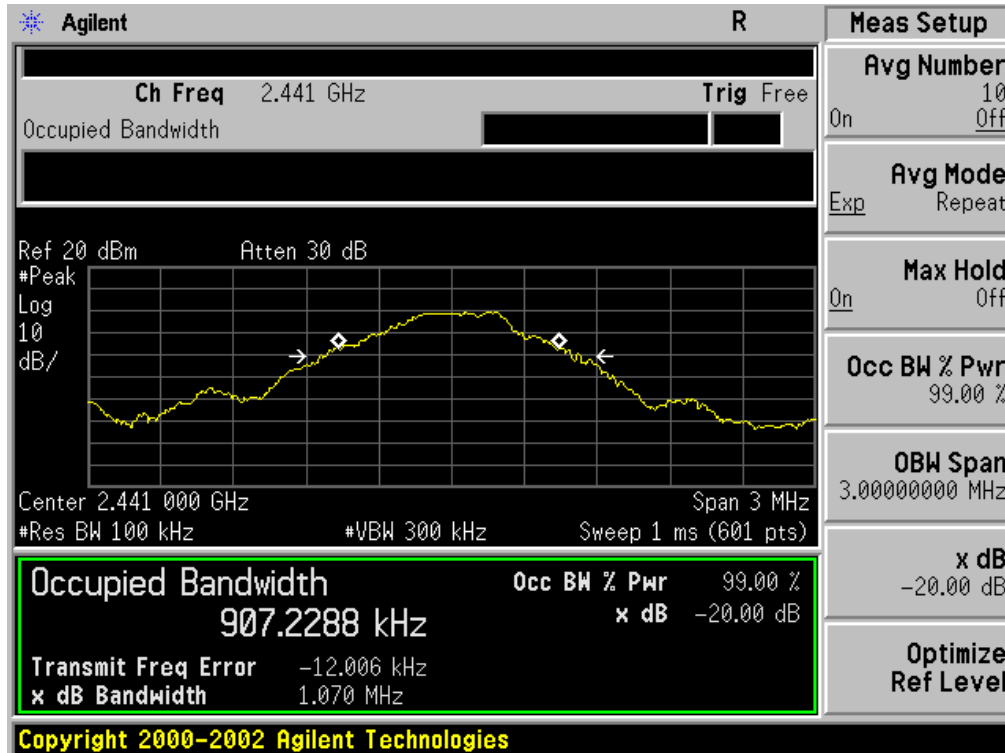
FOR BR/EDR

BLUETOOTH 1MBPS LIMITS AND MEASUREMENT RESULT				
Applicable Limits	Measurement Result			
	Test Data (MHz)			Result
		99%OBW (MHz)	-20dB BW(MHz)	
N/A	Low Channel	0.909	1.067	PASS
	Middle Channel	0.907	1.070	PASS
	High Channel	0.930	1.074	PASS

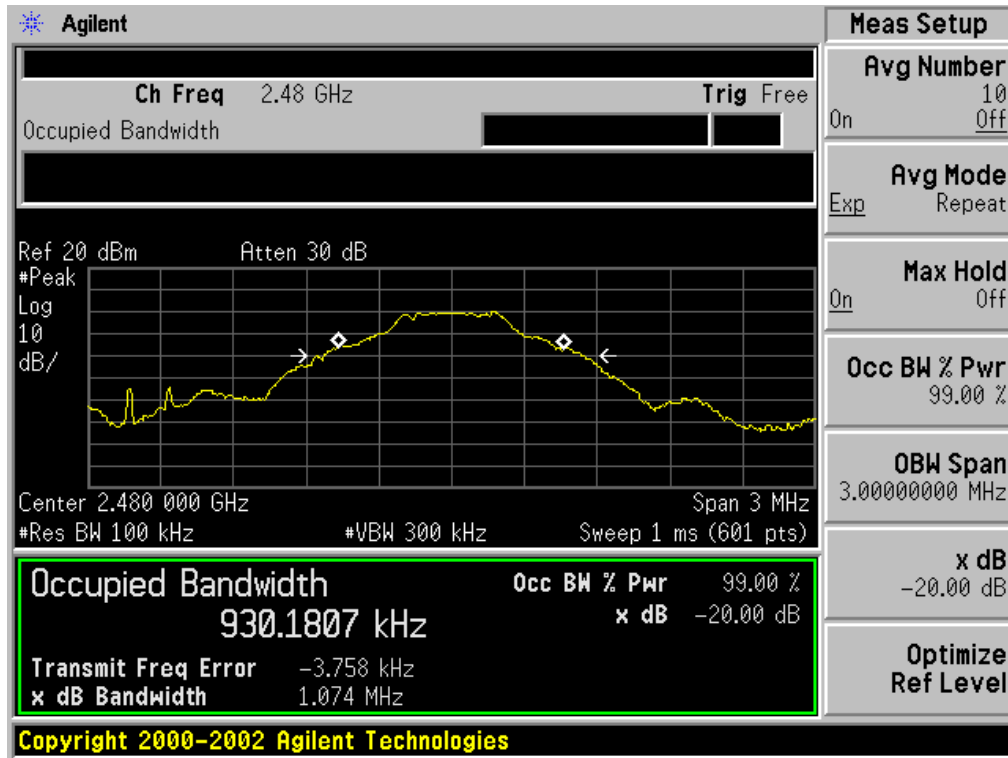
TEST PLOT OF BANDWIDTH FOR LOW CHANNEL



TEST PLOT OF BANDWIDTH FOR MIDDLE CHANNEL

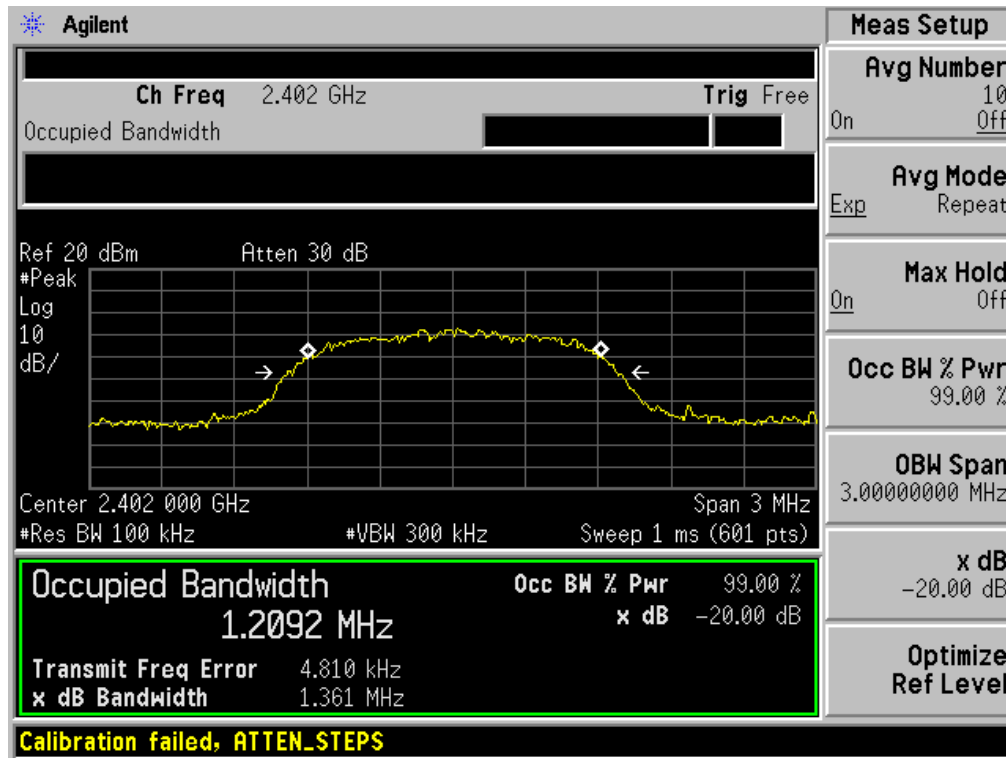


TEST PLOT OF BANDWIDTH FOR HIGH CHANNEL

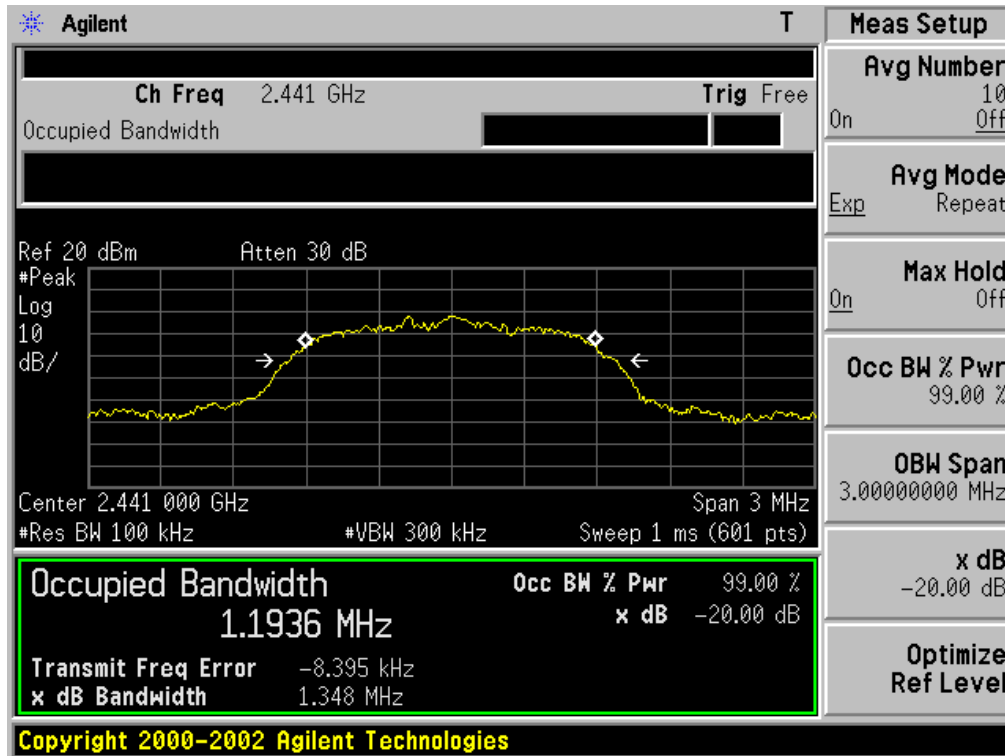


BLUETOOTH 2MBPS LIMITS AND MEASUREMENT RESULT				
Applicable Limits	Measurement Result			
	Test Data (MHz)			Result
		99%OBW (MHz)	-20dB BW(MHz)	
N/A	Low Channel	1.209	1.361	PASS
	Middle Channel	1.194	1.348	PASS
	High Channel	1.203	1.355	PASS

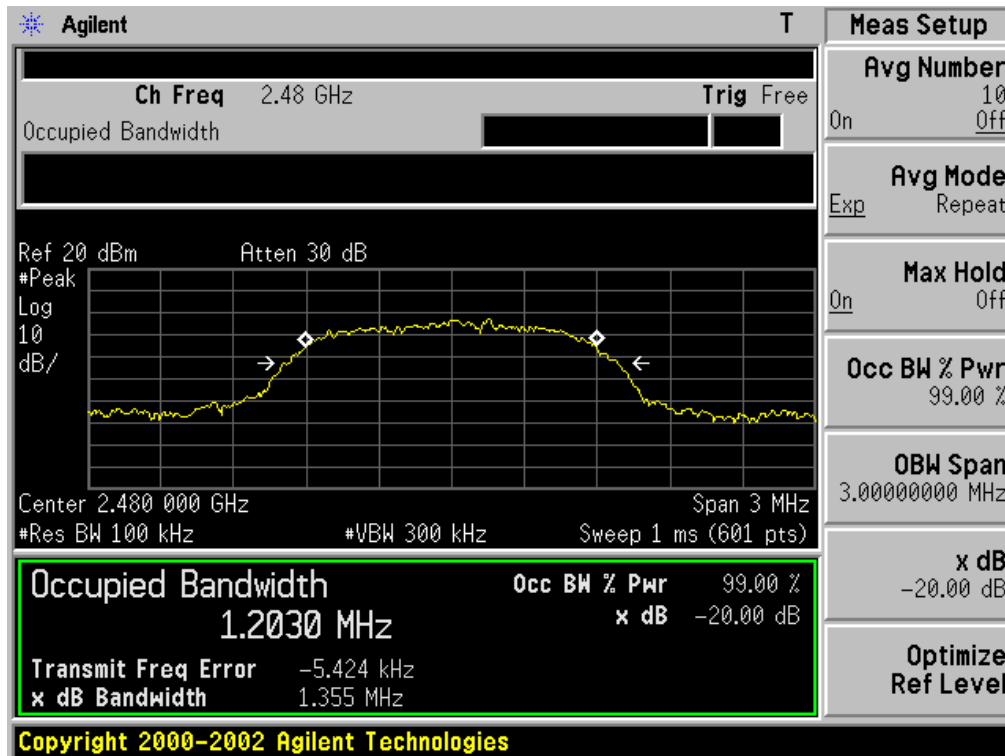
TEST PLOT OF BANDWIDTH FOR LOW CHANNEL



TEST PLOT OF BANDWIDTH FOR MIDDLE CHANNEL

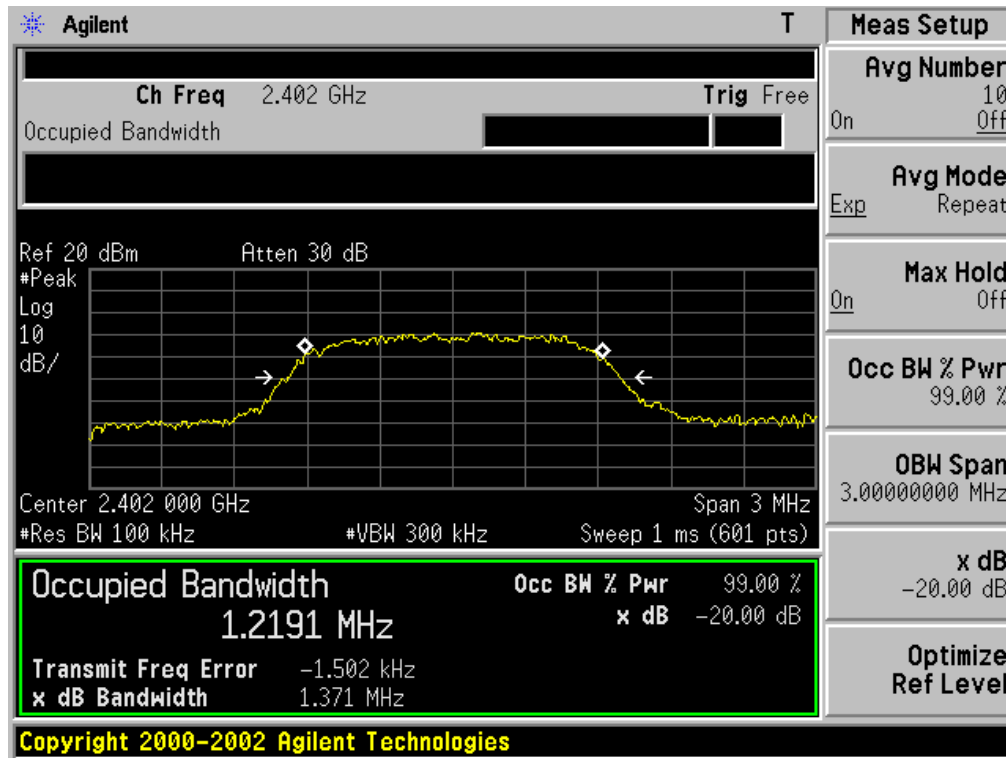


TEST PLOT OF BANDWIDTH FOR HIGH CHANNEL

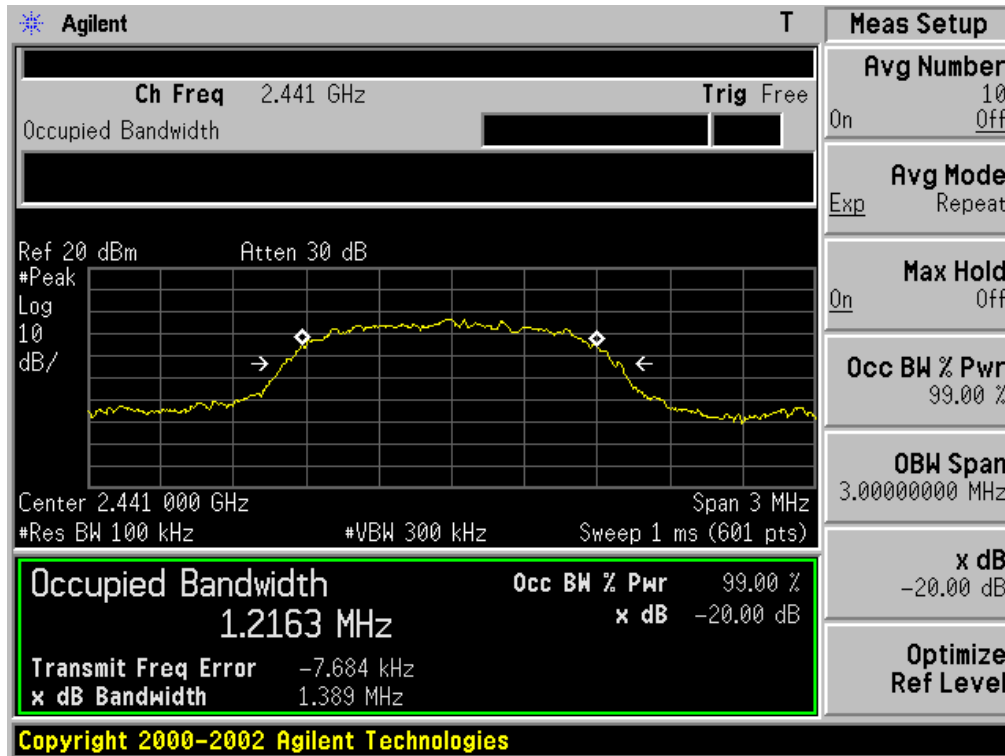


BLUETOOTH 3MBPS LIMITS AND MEASUREMENT RESULT				
Applicable Limits	Measurement Result			
	Test Data (MHz)			Result
		99%OBW (MHz)	-20dB BW(MHz)	
N/A	Low Channel	1.219	1.371	PASS
	Middle Channel	1.216	1.389	PASS
	High Channel	1.225	1.396	PASS

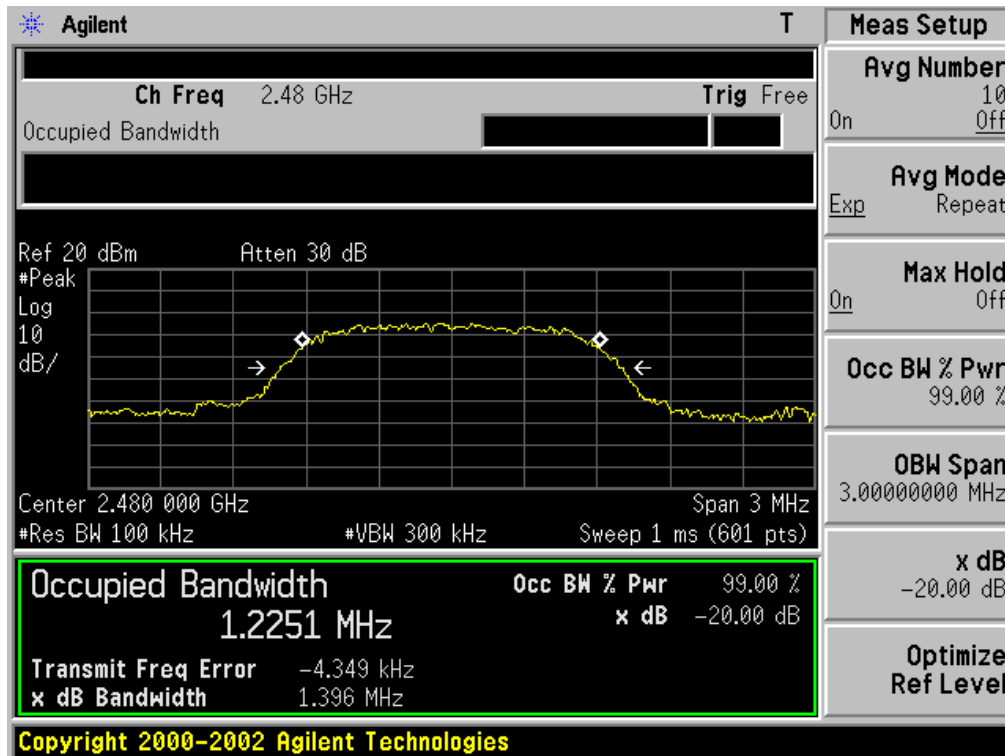
TEST PLOT OF BANDWIDTH FOR LOW CHANNEL



TEST PLOT OF BANDWIDTH FOR MIDDLE CHANNEL



TEST PLOT OF BANDWIDTH FOR HIGH CHANNEL



12. FCC LINE CONDUCTED EMISSION TEST

12.1. LIMITS OF LINE CONDUCTED EMISSION TEST

Frequency	Maximum RF Line Voltage	
	Q.P.(dBuV)	Average(dBuV)
150kHz~500kHz	66-56	56-46
500kHz~5MHz	56	46
5MHz~30MHz	60	50

Note:

1. The lower limit shall apply at the transition frequency.
2. The limit decreases linearly with the logarithm of the frequency in the range 0.15 MHz to 0.50 MHz.

12.2. BLOCK DIAGRAM OF LINE CONDUCTED EMISSION TEST



12.3. PRELIMINARY PROCEDURE OF LINE CONDUCTED EMISSION TEST

1. The equipment was set up as per the test configuration to simulate typical actual usage per the user's manual. When the EUT is a tabletop system, a wooden table with a height of 0.8 meters is used and is placed on the ground plane as per ANSI C63.10 (see Test Facility for the dimensions of the ground plane used). When the EUT is a floor-standing equipment, it is placed on the ground plane which has a 3-12 mm non-conductive covering to insulate the EUT from the ground plane.
2. Support equipment, if needed, was placed as per ANSI C63.10.
3. All I/O cables were positioned to simulate typical actual usage as per ANSI C63.10.
4. All support equipments received AC120V/60Hz power from a LISN, if any.
5. The EUT received DC charging voltage by adapter or PC which received 120V/60Hz power by a LISN.
6. The test program was started. Emissions were measured on each current carrying line of the EUT using a spectrum Analyzer / Receiver connected to the LISN powering the EUT. The LISN has two monitoring points: Line 1 (Hot Side) and Line 2 (Neutral Side). Two scans were taken: one with Line 1 connected to Analyzer / Receiver and Line 2 connected to a 50 ohm load; the second scan had Line 1 connected to a 50 ohm load and Line 2 connected to the Analyzer / Receiver.
7. Analyzer / Receiver scanned from 150 kHz to 30MHz for emissions in each of the test modes.
8. During the above scans, the emissions were maximized by cable manipulation.
9. The test mode(s) were scanned during the preliminary test.

Then, the EUT configuration and cable configuration of the above highest emission level were recorded for reference of final testing.

12.4. FINAL PROCEDURE OF LINE CONDUCTED EMISSION TEST

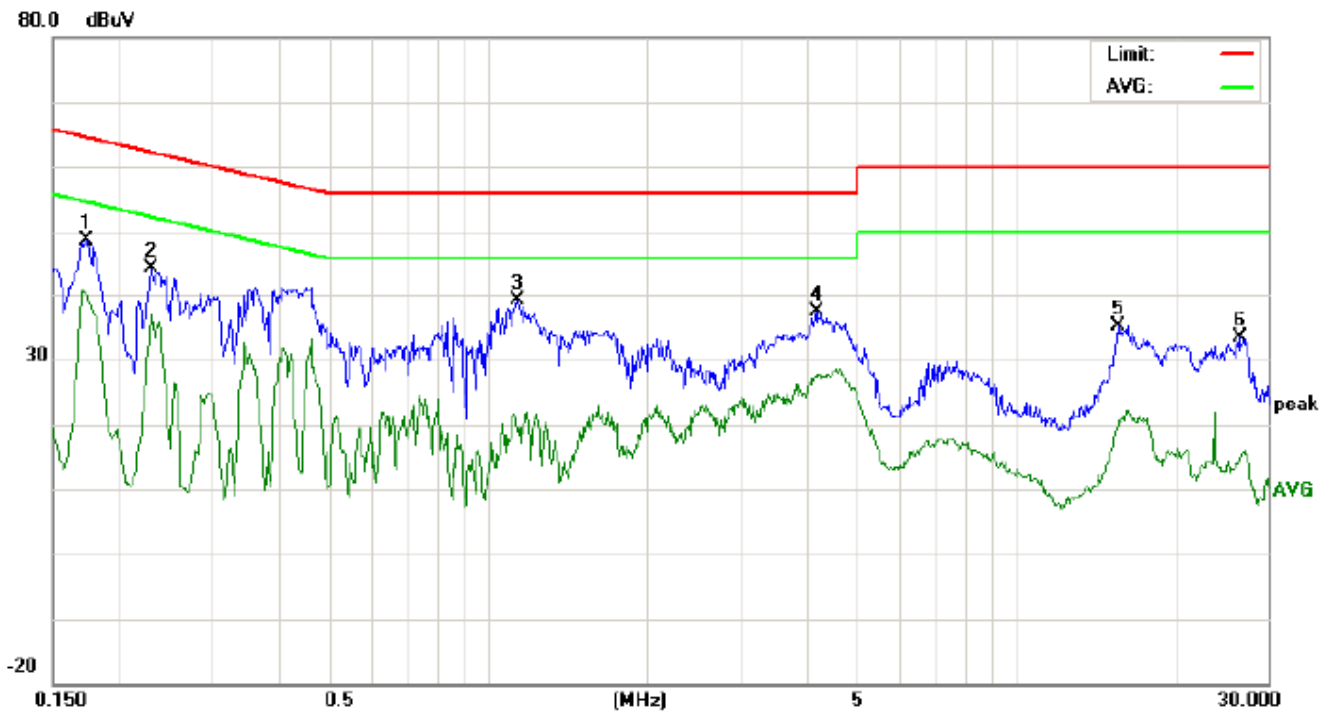
1. EUT and support equipment was set up on the test bench as per step 2 of the preliminary test.
2. A scan was taken on both power lines, Line 1 and Line 2, recording at least the six highest emissions. Emission frequency and amplitude were recorded into a computer in which correction factors were used to calculate the emission level and compare reading to the applicable limit. If EUT emission level was less -2dB to the A.V. limit in Peak mode, then the emission signal was re-checked using Q.P and Average detector.
3. The test data of the worst case condition(s) was reported on the Summary Data page.

12.5. TEST RESULT OF LINE CONDUCTED EMISSION TEST

By adapter(worst case)

FOR BR/EDR

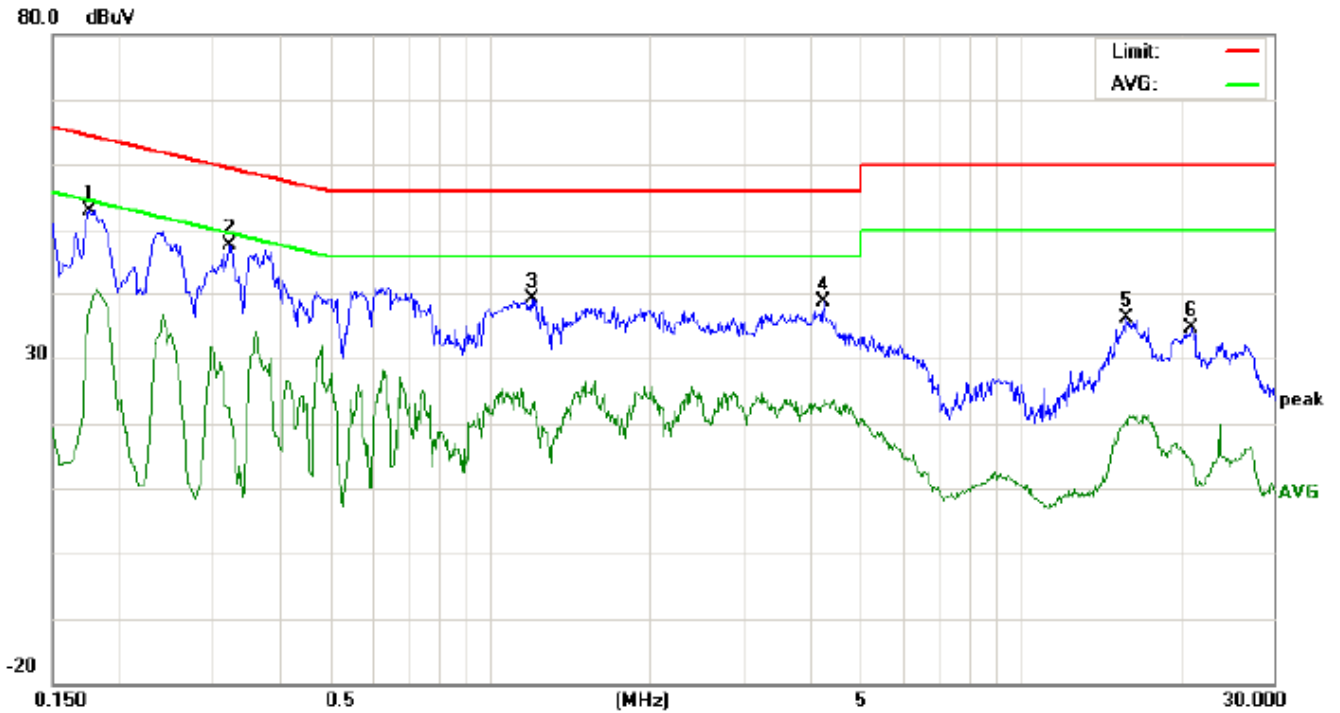
Line Conducted Emission Test Line 1-L



Site: Conduction Phase: **L1** Temperature: 26
 Limit: FCC Class B Conduction(QP) Power: Humidity: 60 %
 EUT: Foldable Neckband Speaker
 M/N: SX-805
 Mode: BT Link with charging
 Note:

No.	Freq. (MHz)	Reading_Level (dBuV)			Correct Factor (dB)	Measurement (dBuV)			Limit (dBuV)		Margin (dB)		P/F	Comment
		Peak	QP	AVG		Peak	QP	AVG	QP	AVG	QP	AVG		
1	0.1731	38.42		29.95	10.19	48.61		40.14	64.81	54.81	-16.20	-14.67	P	
2	0.2300	34.13		26.72	10.25	44.38		36.97	62.45	52.45	-18.07	-15.48	P	
3	1.1378	28.77		8.45	10.37	39.14		18.82	56.00	46.00	-16.86	-27.18	P	
4	4.1897	27.09		17.03	10.35	37.44		27.38	56.00	46.00	-18.56	-18.62	P	
5	15.6219	25.00		10.16	10.11	35.11		20.27	60.00	50.00	-24.89	-29.73	P	
6	26.5300	23.37		4.48	10.11	33.48		14.59	60.00	50.00	-26.52	-35.41	P	

Line Conducted Emission Test Line 2-N



Site: Conduction Phase: **N** Temperature: 26
 Limit: FCC Class B Conduction(QP) Power: Humidity: 60 %
 EUT: Foldable Neckband Speaker
 M/N: SX-805
 Mode: BT Link with charging
 Note:

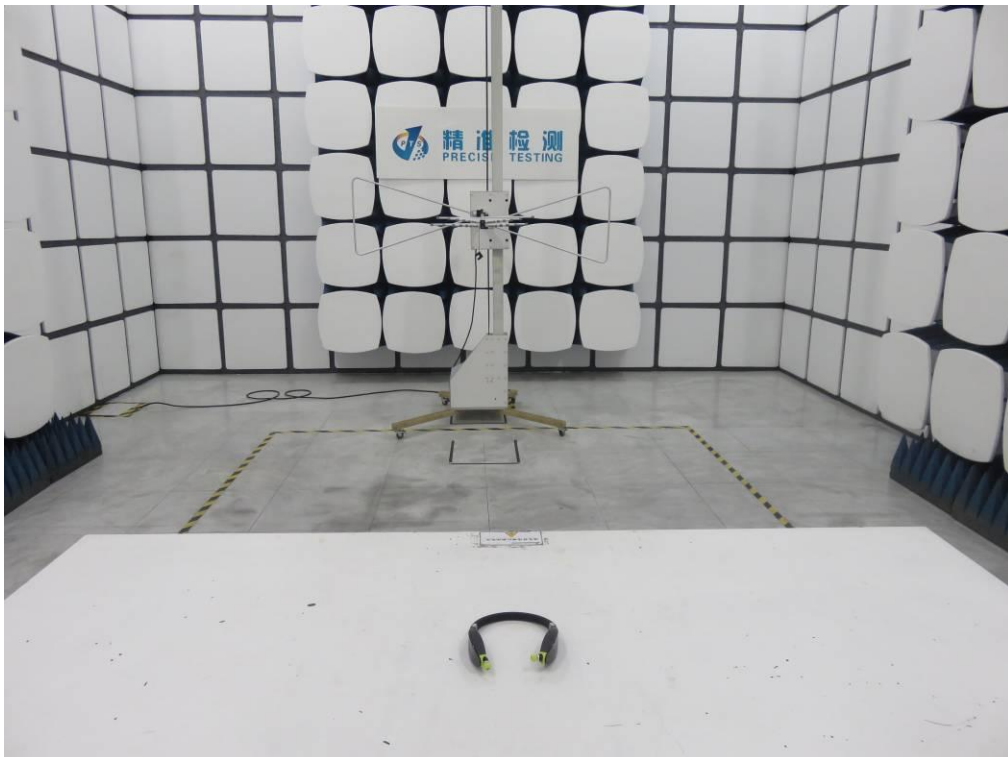
No.	Freq. (MHz)	Reading Level (dBuV)			Correct Factor (dB)	Measurement (dBuV)			Limit (dBuV)		Margin (dB)		P/F	Comment
		Peak	QP	AVG		Peak	QP	AVG	QP	AVG	QP	AVG		
1	0.1758	42.81		27.05	10.19	53.00		37.24	64.68	54.68	-11.68	-17.44	P	
2	0.3234	37.28		11.21	10.30	47.58		21.51	59.62	49.62	-12.04	-28.11	P	
3	1.2016	28.63		12.69	10.37	39.00		23.06	56.00	46.00	-17.00	-22.94	P	
4	4.2618	28.42		12.35	10.31	38.73		22.66	56.00	46.00	-17.27	-23.34	P	
5	15.8018	26.08		10.25	10.11	36.19		20.36	60.00	50.00	-23.81	-29.64	P	
6	21.1060	24.58		3.48	10.13	34.71		13.61	60.00	50.00	-25.29	-36.39	P	

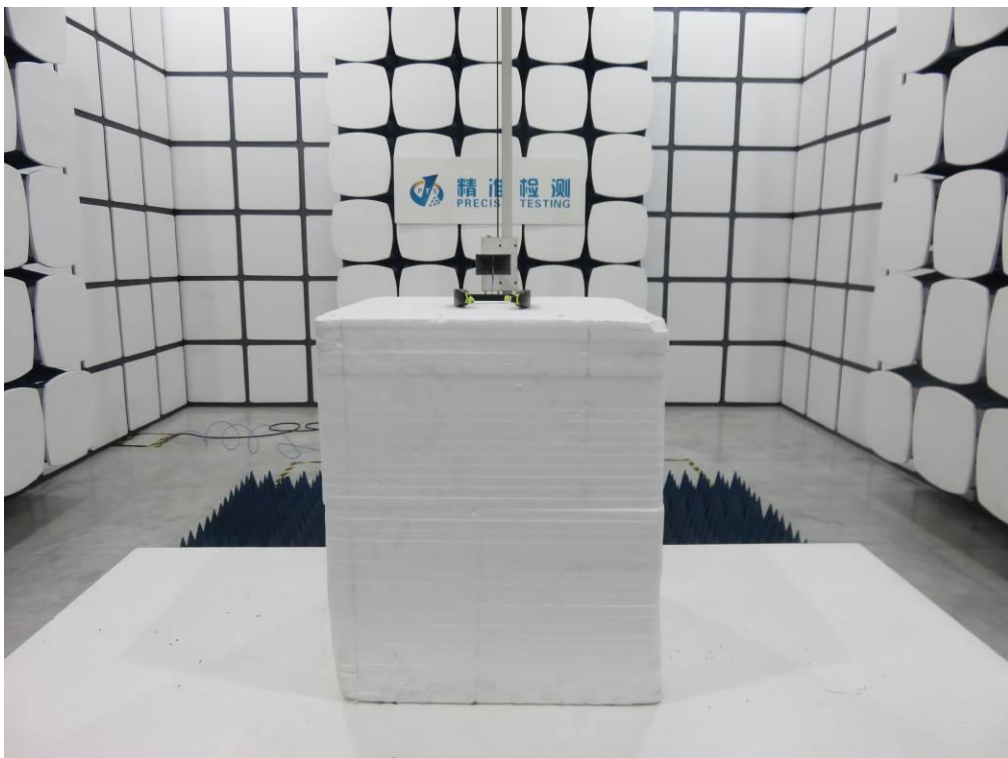
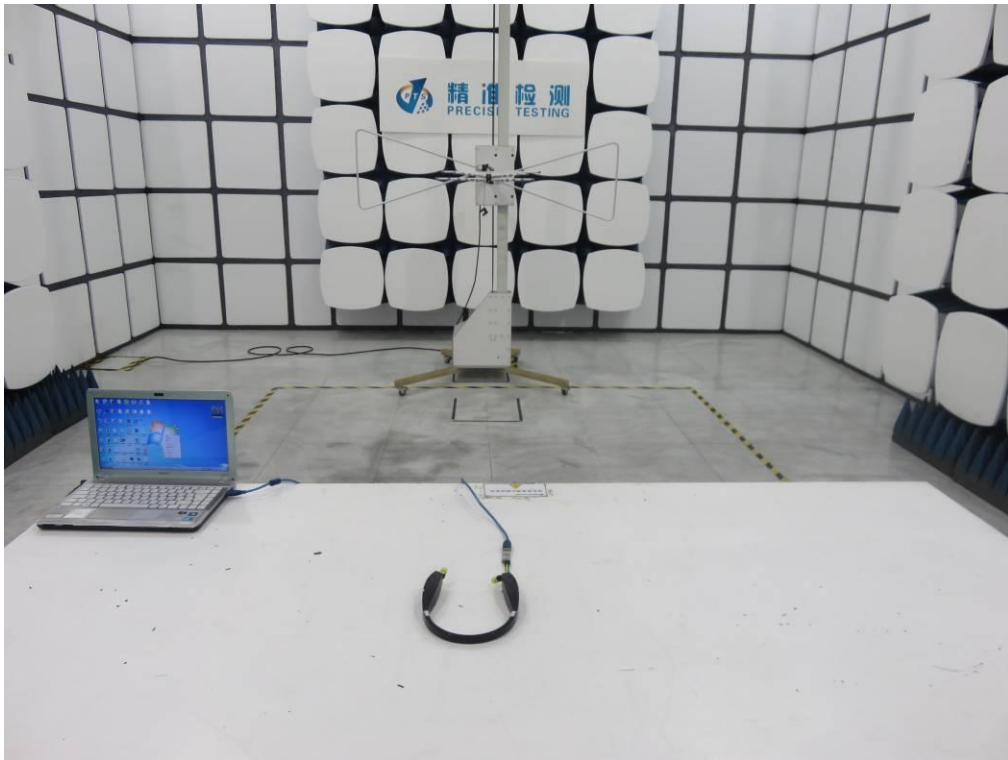
APPENDIX A: PHOTOGRAPHS OF TEST SETUP

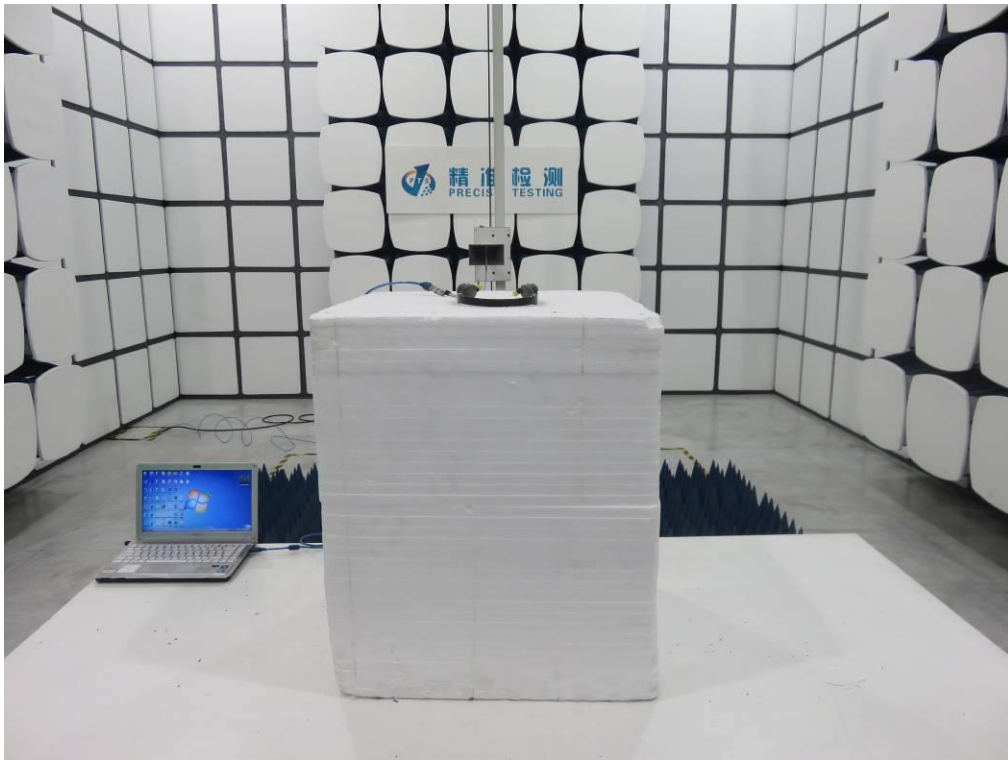
FCC LINE CONDUCTED EMISSION TEST SETUP



FCC RADIATED EMISSION TEST SETUP







APPENDIX B: PHOTOGRAPHS OF EUT
ALL VIEW OF EUT



TOP VIEW OF EUT



BOTTOM VIEW OF EUT



FRONT VIEW OF EUT



BACK VIEW OF EUT



LEFT VIEW OF EUT



RIGHT VIEW OF EUT



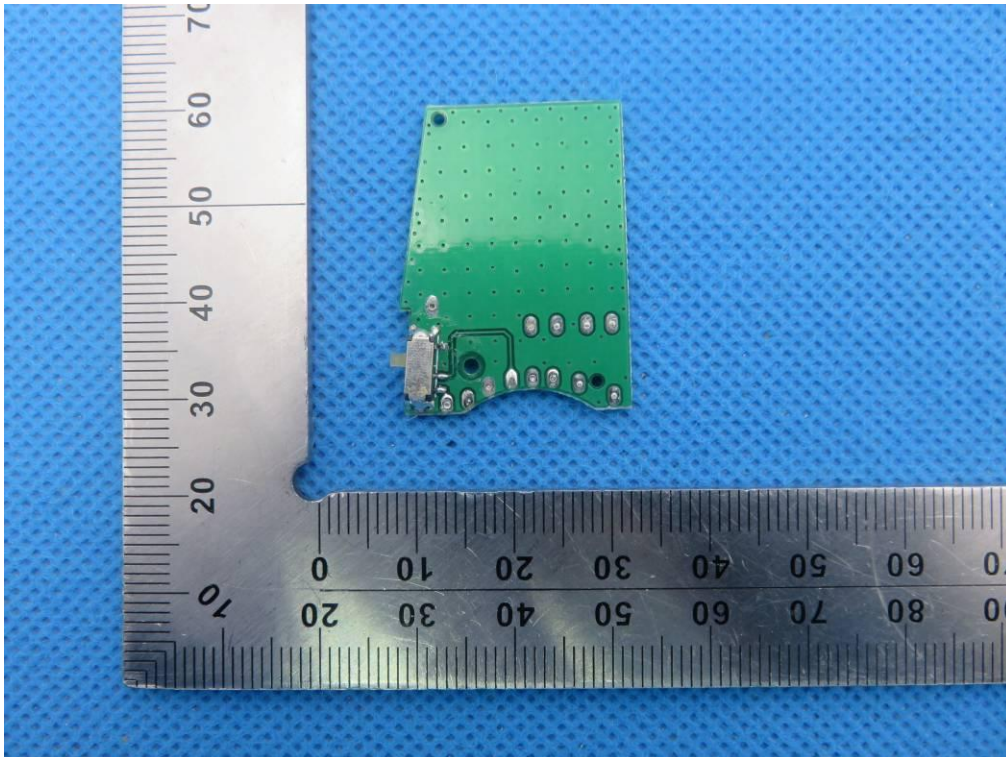
VIEW OF EUT (PORT)



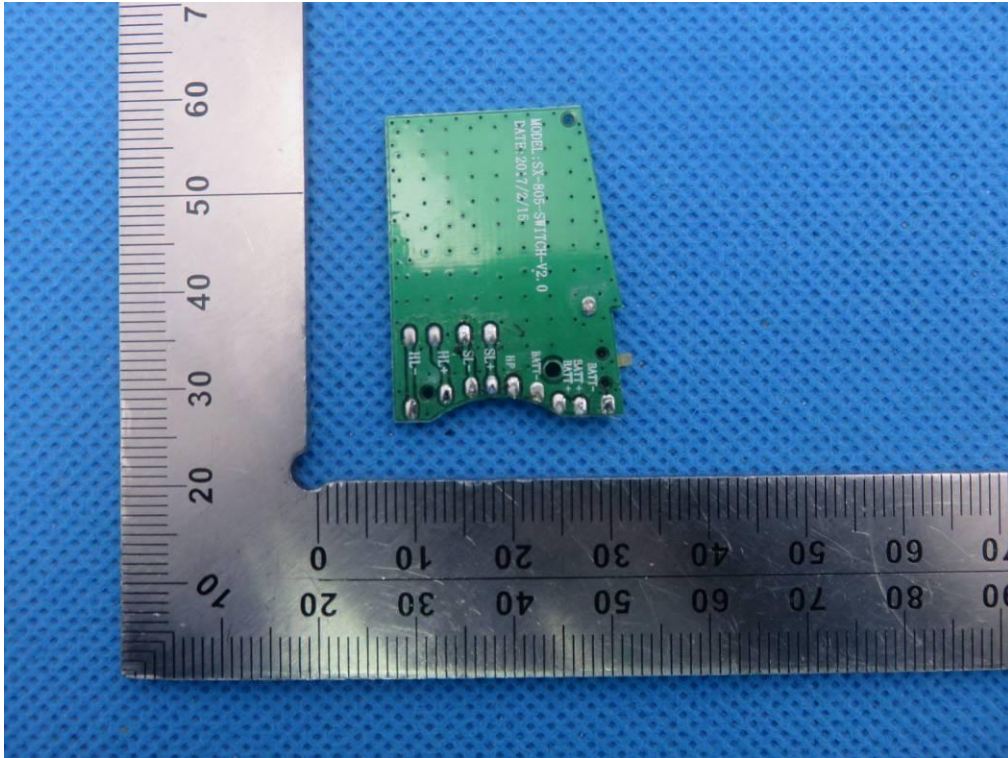
OPEN VIEW OF EUT



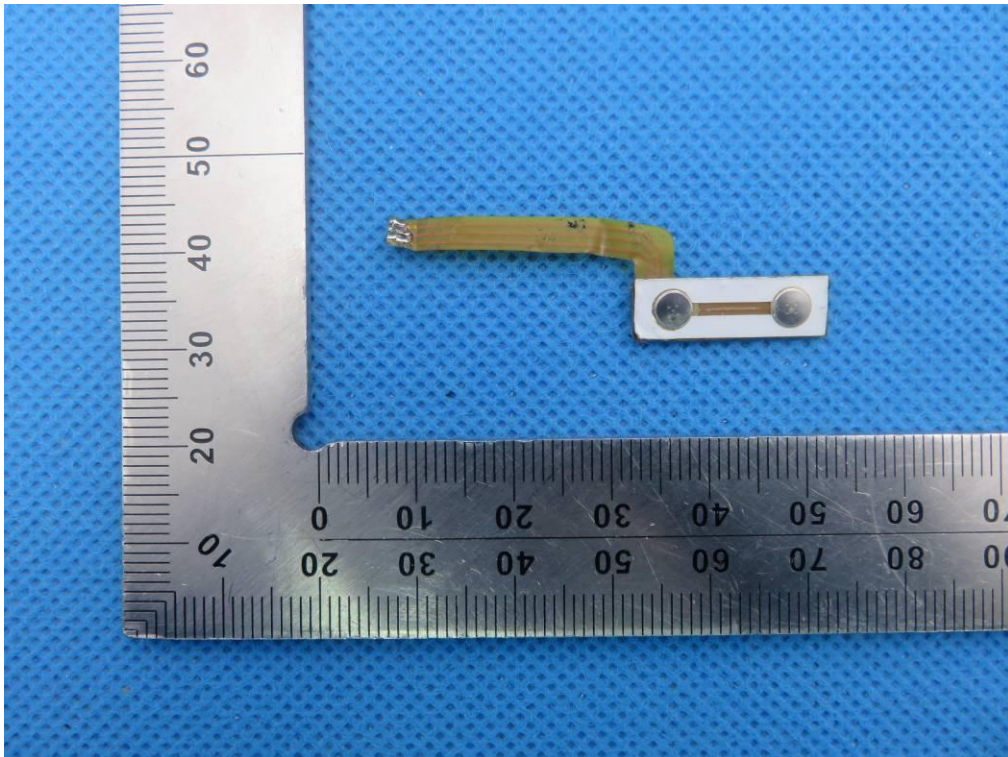
INTERNAL VIEW OF EUT-1



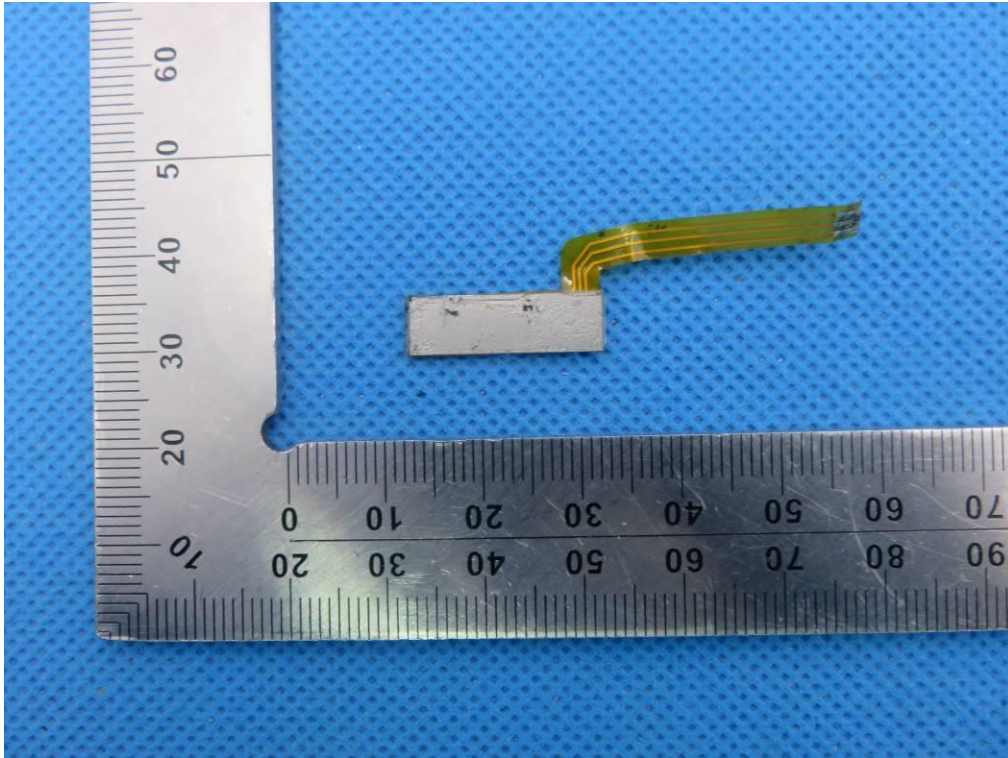
INTERNAL VIEW OF EUT-2



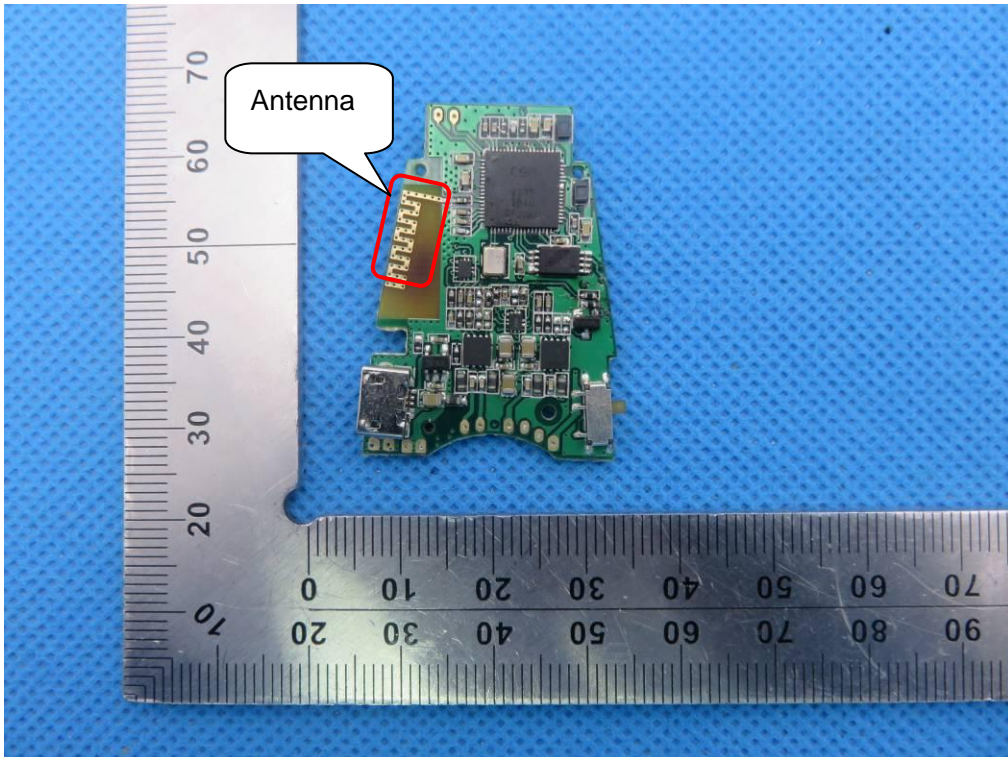
INTERNAL VIEW OF EUT-3



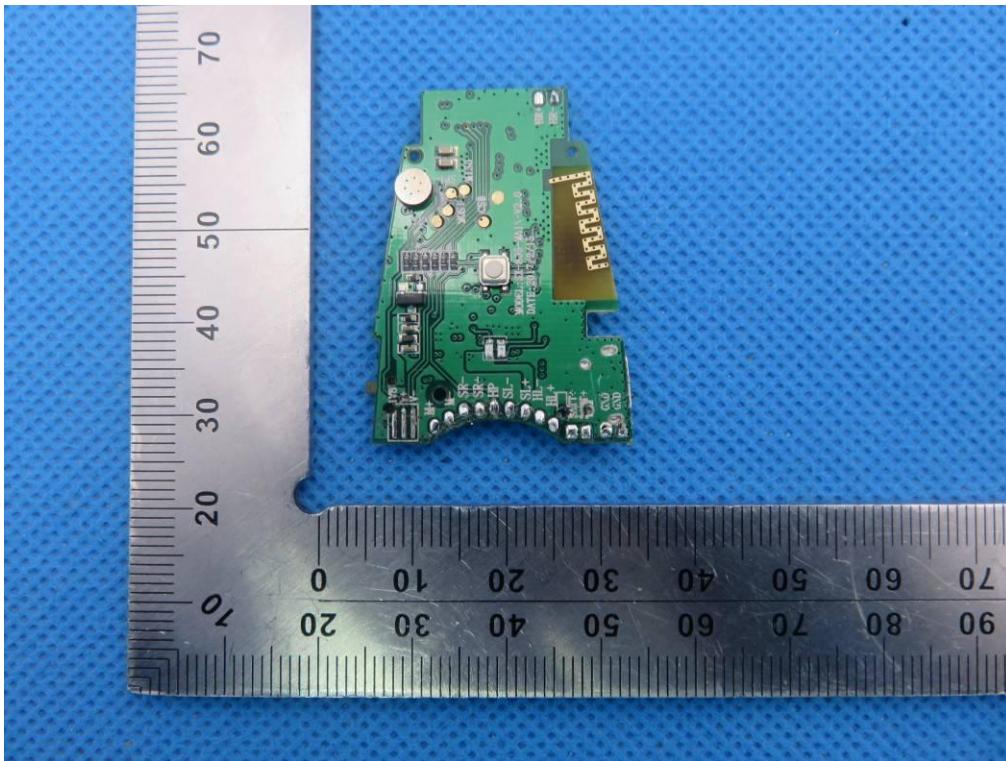
INTERNAL VIEW OF EUT-4



INTERNAL VIEW OF EUT-5



INTERNAL VIEW OF EUT-6



INTERNAL VIEW OF EUT-7



VIEW OF ADAPTER (AE)



THE ADAPTER SUPPLIED BY AGC

----END OF REPORT----