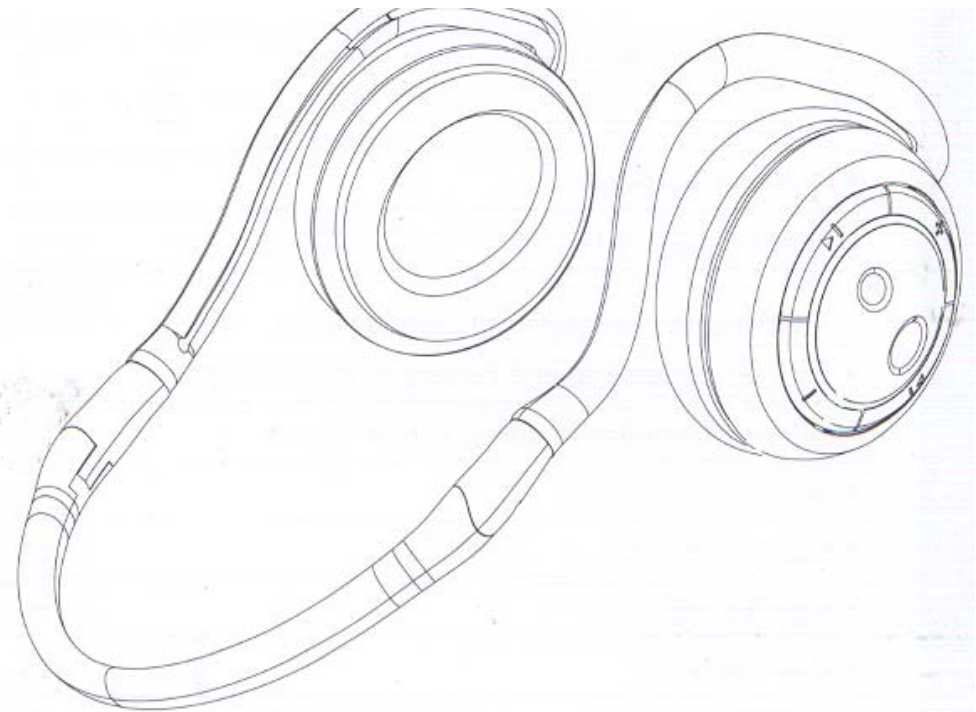


**suicoen**

**USER' S GUIDE**  
Stereo Bluetooth headset



Thank you for purchasing our SX-905 Stereo Bluetooth headset.  
We believe that you will be satisfied with the SX-905 Stereo  
Bluetooth headset and enjoy the wonderful music.  
Before you using the SX-905 Stereo Bluetooth headset,  
please read this User's Guide carefully.



This device complies with Part 15 of the FCC Rules. Operation is subject to the following two conditions:

- (1) This device may not cause harmful interference.
- (2) This device must accept any interference received, including interference that may cause undesired operation.

**Changes or modifications not expressly approved by the party responsible for compliance could void the user's authority to operate the equipment.**

**FCC RF Radiation Exposure Statement: This equipment complies with FCC RF radiation exposure limits set forth for an uncontrolled environment. This device and its antenna must not be co-located or operating in conjunction with any other antenna or transmitter.**

#### **Federal Communications Commission (FCC) Requirements, Part 15**

**This equipment has been tested and found to comply with the limits for a class B digital device, pursuant to part 15 of the FCC Rules. These limits are designed to provide reasonable protection against harmful interference in a residential installation.**

**This equipment generates, uses and can radiate radio frequency energy and, if not installed and used in accordance with the instructions, may cause harmful interference to radio communications. However, there is no guarantee that interference will not occur in a particular installation. If this equipment does cause harmful interference to radio or television reception, which can be determined by turning the equipment off and on, the user is encouraged to try to correct the interference by one or more of the following measures:**

- Reorient or relocate the receiving antenna.**
- Increase the separation between the equipment and receiver.**
- Connect the equipment into an outlet on a circuit different from that to which the receiver is connected.**
- Consult the dealer or an experienced radio/TV technician for help.**

## Catalog

(1) Product function and operation	
• Catalog	1
• Function and Features	2
• Components and Parts	3
• Battery Charging	5
• Headset on/Headset off	6
(2) Pairing the headset with mobile phone	
• Turn on the headset and Pairing with mobile phone	7
• Enjoy the wonderful music wirelessly	9
• Answer a phone call	10
• End a phone call	10
• Reject a call	10
• Voice Dialing	11
• Redial the phone	11
• Divert a phone call	12
• Adjust Volume	12
(3) Install Software	13
(4) Pairing the headset with the PC	15
(5) Pairing the headset with the Audio Device	24
(6) Auto Transformation between phone call and Music	25
(7) Product Specification	26

## Function and Features

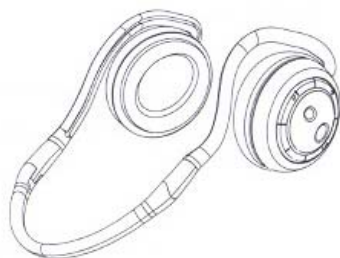
### Features of SX-905 Stereo Bluetooth headset

- Transmit Stereo music via Bluetooth Adapter. (Acoustics Devices like IPOD, PSP, MP3, and HI-FI)
- Support A2DP mobile phone. The mobile phone can transmitted stereo music directly, No need the Bluetooth Adapter. (Mobile phone like Nokia N91, Motorola E680i)
- A wireless headset when pairing the headset with Bluetooth mobile phone.
- Chatting on line with Skype function.
- Transmitted the file with other Bluetooth devices via Bluetooth adapter.
- Foldable design, easy to carry.
- Angle of the Audio frequency plug can be adjustable. (Max.180° )
- Bluetooth Adapter (USB) connects to the Computer and can recharge the battery.
- Using for along time.
- Noise canceling technology.



## Components

Bluetooth headset



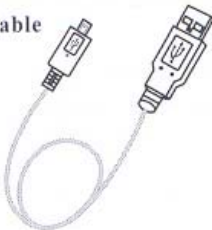
Three-in-one Bluetooth adapter  
(Selective)



DC Adapter



USB Cable



CD



Portable bag

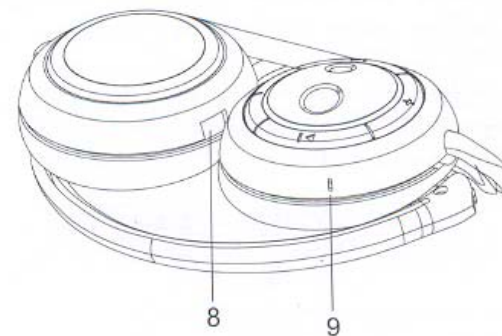


User's Guide

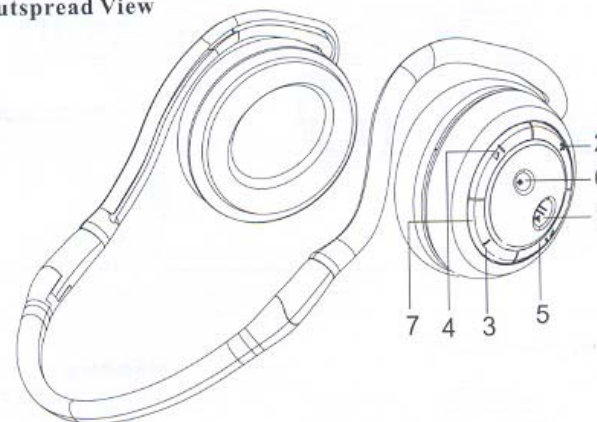


## Parts

Foldable View



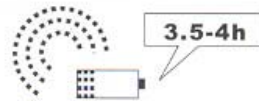
Outspread View



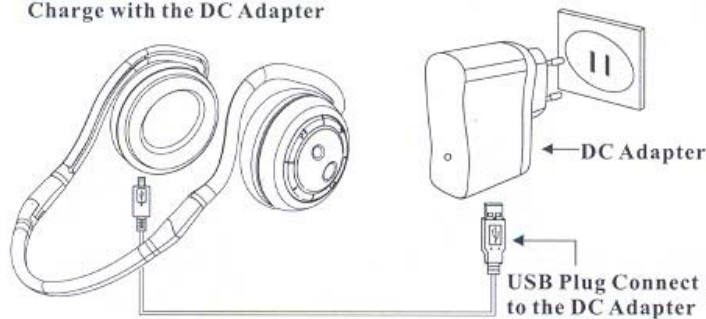
- |                          |                    |                      |
|--------------------------|--------------------|----------------------|
| 1 Multifunctional Button | 2 Volume+          | 3 Volume-            |
| 4 Former song Button     | 5 Next song Button |                      |
| 6 Stop                   | 7 Indicator LED    | 8 Charging Connector |
| 9 Microphone             |                    |                      |

## Battery Charging

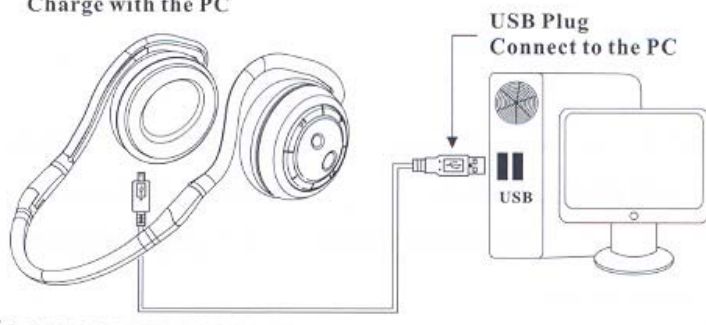
The headset covers a built-in recharged battery. We recommend that you charge the battery until the headset indicator LED turns off before using the headset for the first time. During charging, the headset is turned off automatically and the indicator light shows a steady red light. When the battery is fully charged, the indicator LED switches off. It takes 3.5 to 4 hours to fully recharge battery.



### Charge with the DC Adapter



### Charge with the PC



## Headset on/Headset off

### ■ Headset on

Press and hold the multifunction button until you hear two short high tones. The indicator LED on the headset flashing blue.

Note: The first time the headset is turned on; it might automatically be ready for pairing.

### ■ Headset off

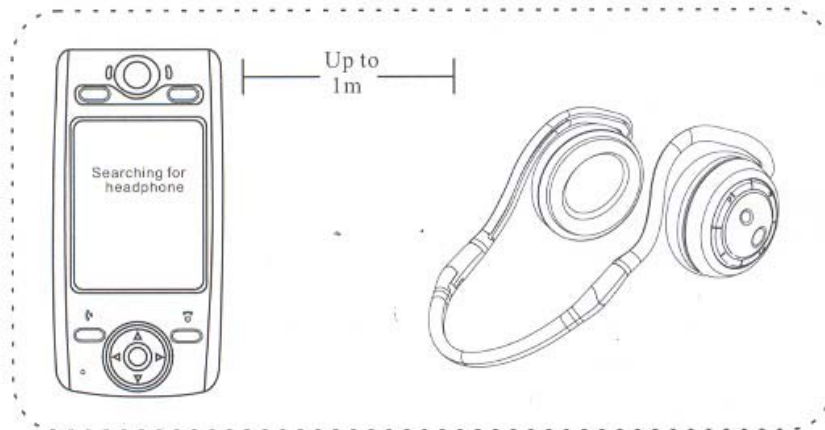
Press and hold the multifunction button until you hear two short low tones. The indicator light on the headset switches off after flashing red four times.



## Pairing the headset with mobile phone

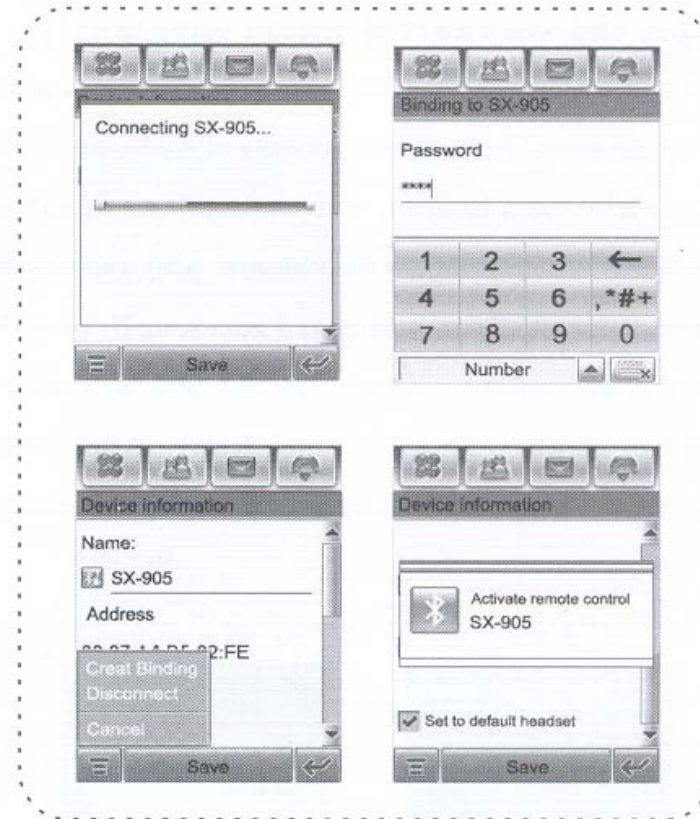
### ■ Turn on the headset and Pairing with mobile phone

- ◆ With the headset turned off, please press and hold the multifunction button for up to 8 seconds until the Indicator LED on the headset flashes blue and red.
- ◆ Start Bluetooth capability according to the instructions in the phone's user manual.
- ◆ In a list device types that you can pair with your phone appears. Scroll to SX-905. Make sure the headset is within 1m of the phone.



- ◆ SX-905 appears in the display, press YES. Enter the headset passkey (0000), press YES. The phone pairing procedure starts. You may now replace the given headset name with a personal nametag, YES. When pairing has been completed, the indicator light will flash blue.

## Pairing the headset with mobile phone



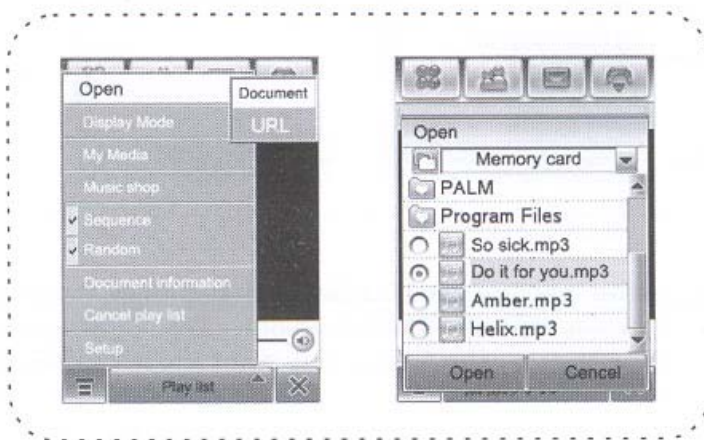
Note: After pairing the Headset and the phone, these two devices will recognize each other. You don't need to pair them again unless you want to use the headset with other device.



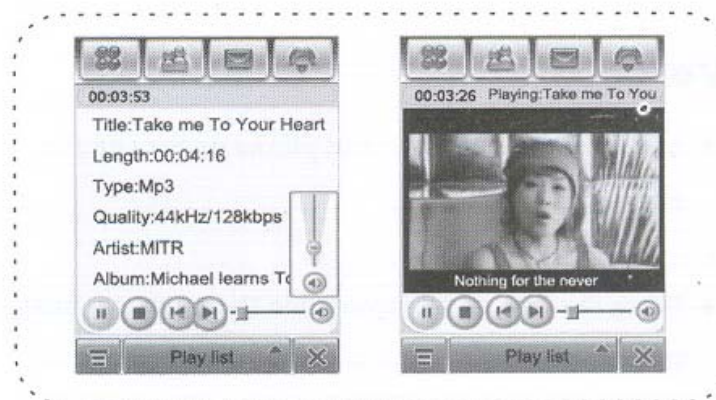
## Pairing the headset with mobile phone

### ■ Enjoy the wonderful music wirelessly

After pairing the headset and the mobile phone, you can enjoy the sound from the documents of Audio and Video via the Bluetooth headset. You can enjoy music without wire limit. You can adjust the volume, play and stop the music, select the former song and next song by press the shortcut keys on the headset. The SX-905 will stop the music to answer the phone automatically. After ending the call, the headset will play the music automatically.



## Pairing the headset with mobile phone



### ■ Answer a phone call

When the mobile phone rings, please press multifunction button to talk.

Note: If the mobile phone rings before the headset please wait until headset rings and press multifunction button.

### ■ End a phone call

Press multifunction button again to end the call.

### ■ Reject a call

When there is an incoming call, please press the multifunction button 1 sec, the incoming call will end. (some mobile phones can not use this function because different mobile phone mode.)

### ■ Voice Dialing

- ◆ Make sure the headset and phone opens and in each effective range.
- ◆ Press the function button once, then you can hear the indication of voice dialing will be effected.
- ◆ Press multifunction button to end the call  
Note: Need your mobile phone support this item before using it. More details please refer to User's Manual of mobile phone.

### ■ Redial the phone

- ◆ Make sure the headset and phone open and in each effective range.
- ◆ Press the volume+ and volume- above 3 seconds, the headset will redial the last dialed number.

### ■ Divert a phone call

- ◆ If you make a call using your phone, you can transfer the sound to the headset if the headset is on, paired with the phone, and within range.
- ◆ During a call, press call handling button to transfer the sound to the headset. The headset beeps until the sound has been transferred..
- ◆ If the connection to the headset is lost during an ongoing call, press the YES key on the phone to transfer the call to the phone, otherwise the call is disconnected after 30 seconds.

### ■ Adjust Volume

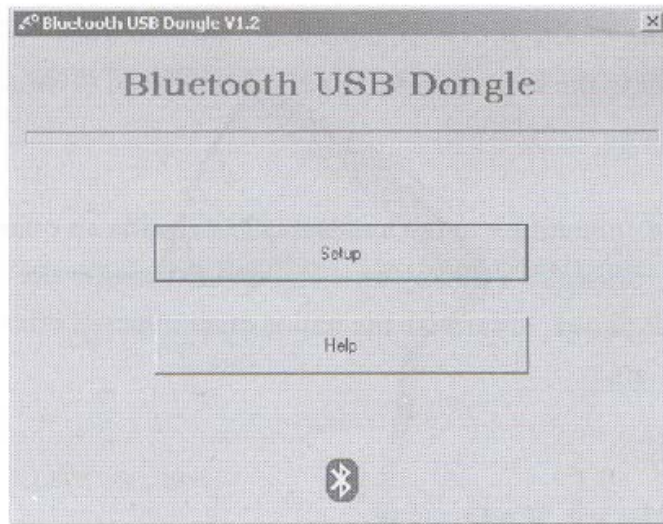
- ◆ You can adjust the headset speaker volume during a call.  
To increase the volume, press volume+  
To decrease the volume, press volume-



## Install Software

### ■ Install Software

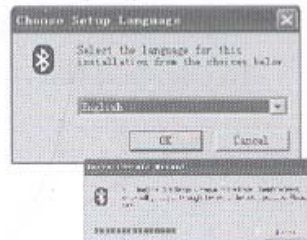
- ◆ Insert the CD, the menu will be displayed on the screen. If the install procedure can't be effected automatically, please effect the [Setup] procedure



- 1 Select [Setup] on CD installation screen.



- 2 Choose Setup Language, click [OK].



- 3 Click [Next (N) >]



- 4 Click [Yes]



- 5 Select installation folder, click [next(N)>]



- 6 Duplicate the file, please wait few minutes.



- 7 Click finish to complete installation.



- 8 After Installation, [IVT Bluesoleil] will appear in Start Menu.





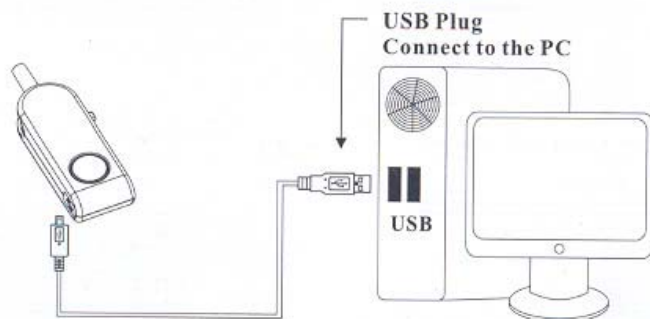
## Pairing the headset with the PC

### ■ Pairing the headset with the PC

1. Connect to the PC through Bluetooth Dongle and IVT software.
  - ◆ You can enjoy the stereo music which played on the PC wirelessly and control the PC remotely.

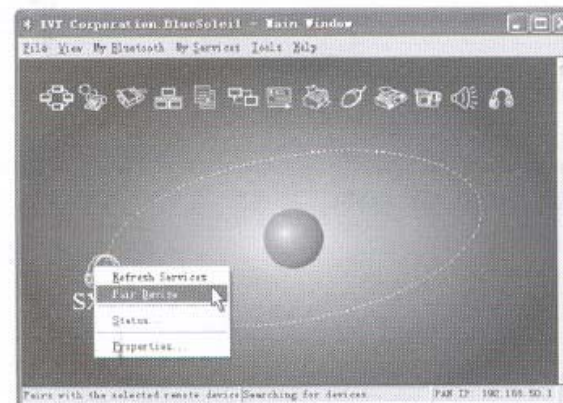
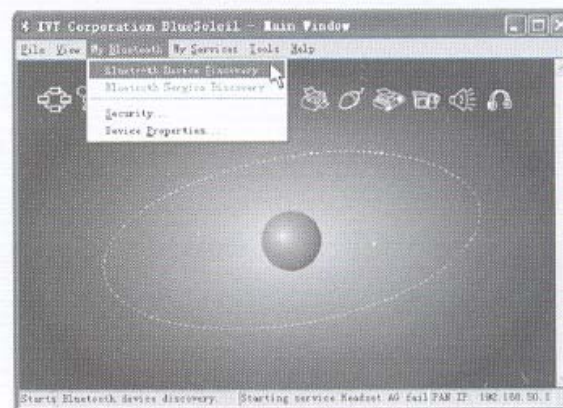
1 Make sure the headset is off.

2 Start up the PC and run on the IVT BlueSoleil, then Insert the Bluetooth Dongle into the USB connector of PC.



## Pairing the headset with the PC

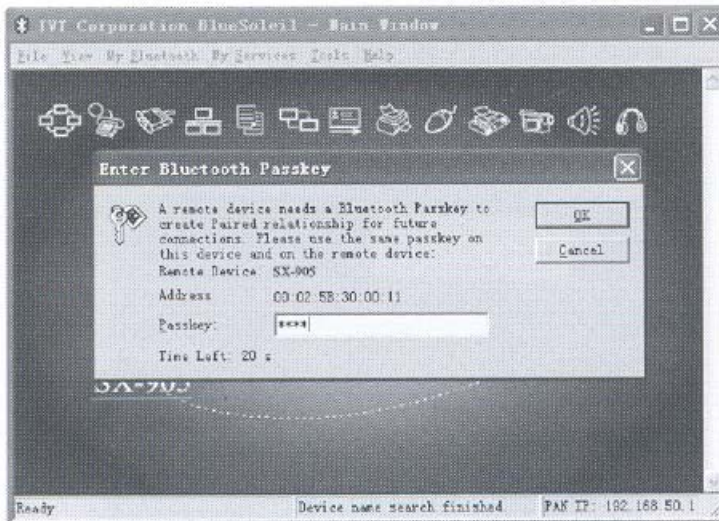
- 3 Press Multifunction Button of the headset for 8 seconds to enter pairing mode. Click 'BlueSoleil' with left button of the mouse, next click 'My Bluetooth' and then 'Bluetooth Device Discovery'. The dongle will enter searching Bluetooth Device status. Find out SX-905 and operate the PC to stop searching Bluetooth Device. Click SX-905 with right button of mouse and select Pair Device in the pop-up menu.





## Pairing the headset with the PC

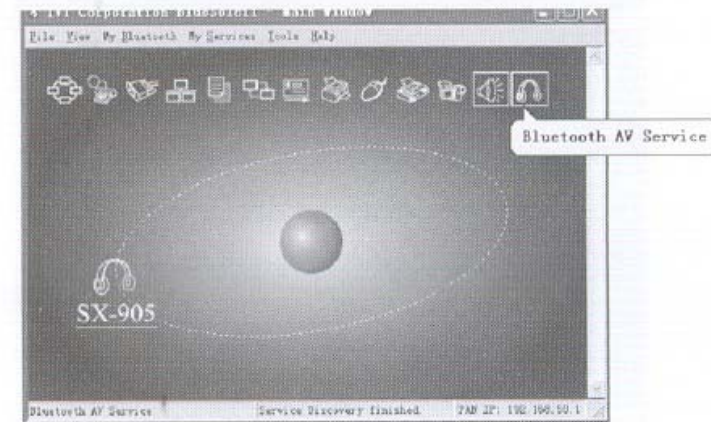
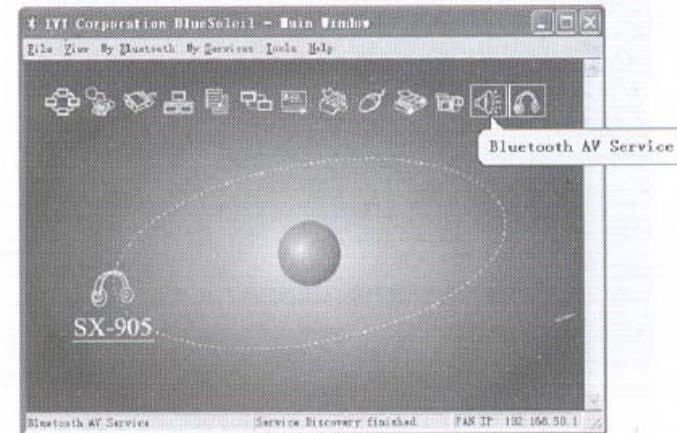
- 4 Enter the password of SX-905, click OK to finish pairing.



- 5 If the headset can not pair in 2 minutes, the headset will withdraw pairing. Please pair again.

## Pairing the headset with the PC

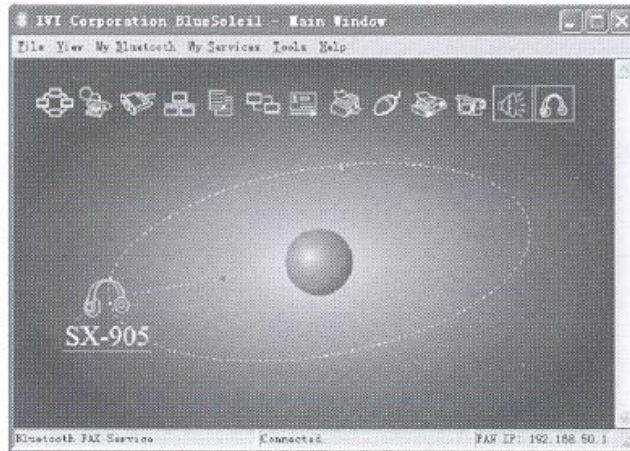
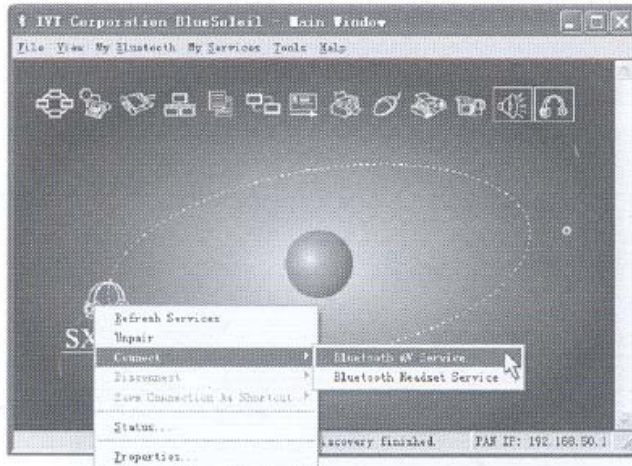
- 6 Double-click SX-905 ico with left Button of the mouse or click SX-905 ico with right Button of mouse and select 'Update service record' on the pop-up menu. 'Bluetooth AV Service' and 'Bluetooth headset' icons turn yellow.





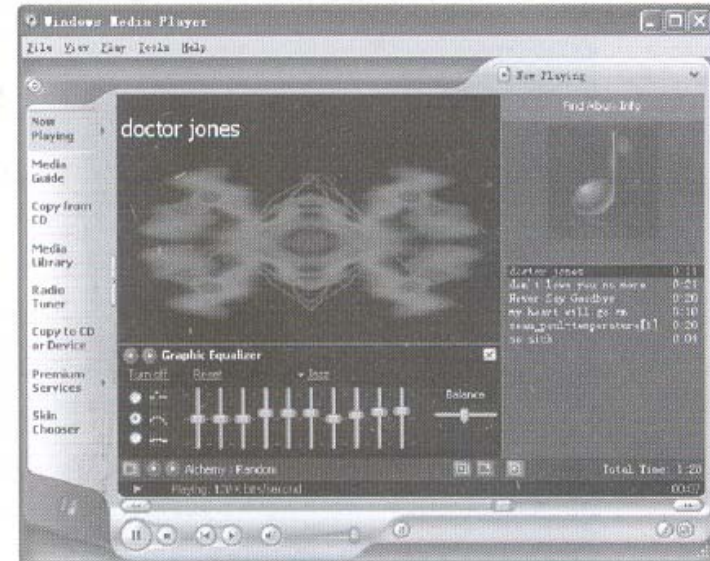
## Pairing the headset with the PC

- 7 Click SX-905 ico with right Button of mouse and select 'Connect --Bluetooth AV Service' in the pop-up menu, or click Bluetooth AV Service ico with left button of mouse, the PC and Headset will be connected.



## Pairing the headset with the PC

- 8 Start up the 'Windows Media Player' to play music You can hear the stereo music which played on the PC. Moreover, you can remotely control the 'Windows Media Player' by pressing 'Play Button, Pause Button, Stop Button, Former song and Next song Button'. (Before start up the 'Windows Media Player', please transfer the Sound Card to Bluetooth AV/HS Audio.)

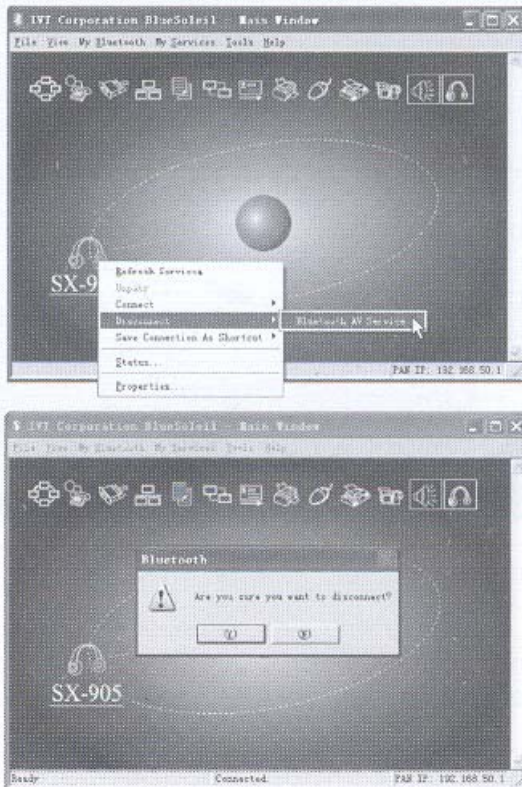




## Pairing the headset with the PC

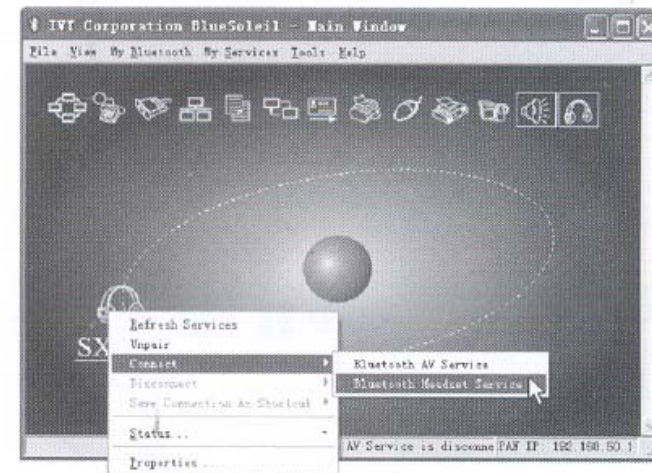
### ◆ Skype function and chatting on line.

- 1 Under 'Bluetooth AV Service 'status, click SX-905 ico with right button and select 'Disconnect Bluetooth AV Service' in the pop-up menu. Then 'Are you sure you want to disconnect?' will pop up and click 'Yes'. You can disconnect AV and rebound to original connection.



## Pairing the headset with the PC

- 2 Click SX-905 ico with right button and select 'Connect Bluetooth Headset Service' in the pop-up menu or click headset ico with left button, then the PC will be connected with headset. Now, you can hear music from headset. Press Multifunction Button to stop the music. You can chat on line with the headset now. (Note: before using the QQ, MSN, please enter into 'Control panel ---- Audio and Video Device ---- Audio and Video Device Property ---- Audio. Setup the 'play' and 'record' as 'Bluetooth AV/HS Audio' and then setup the Audio In and Audio Out of Voice Setting as 'Bluetooth AV/HS Audio'.



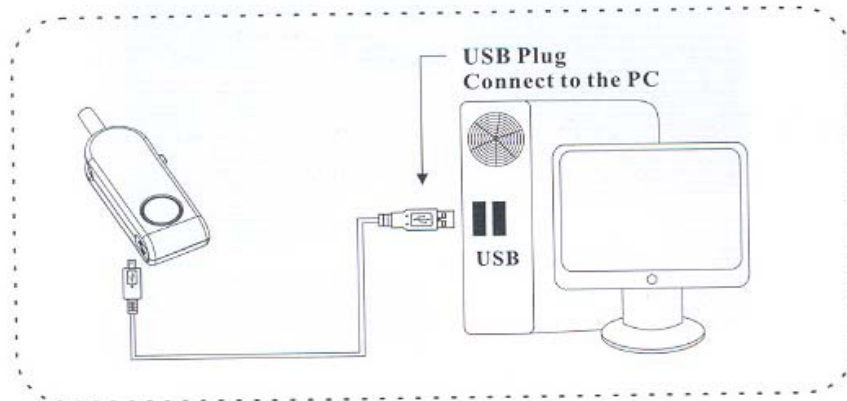


## Pairing the headset with the PC

### II、Pairing with the PC via Bluetooth Dongle

◆ Listen to the stereo music from PC via Bluetooth headset

- 1、 Make sure the Headset is off.
- 2、 Start up the PC and insert Bluetooth Dongle into USB connector of the PC.
- 3、 Make sure the sound card of the PC transferred to USB Audio Device.
- 4、 Turn on the headset. Then the Bluetooth Dongle will pair with the headset automatically. After pairing finished, the Indicator light will flash blue.
- 5、 Click the 'Windows Media Player' to play music. You will listen to the music that played on PC now.
- 6、 You can press the Volume+ and Volume- on the headset to adjust the volume.



## Pairing the headset with the Audio Device

### ■ Pair the headset with Audio Device such as MP3,MP4,DVD and TV.

- 1、 Place the Headset and Bluetooth Dongle within 1m of each other.
- 2、 Make sure headset is off.
- 3、 Press the Power Button of Bluetooth Dongle till the indicator LED flashes red and blue. Turn on the headset.
- 4、 The Dongle and the headset will pair and connect automatically.
- 5、 After pairing, Bluetooth Dongle indicator LED flashes blue and the headset indicator light flashes blue at proper interval.
- 6、 If the headset can't pair with the Audio Device in 2 minutes, the headset will withdraw pairing automatically. Please repair again according the above instruction.
- 7、 Insert the stereo plug of Bluetooth Dongle into the Audio out of the Audio Device and play the music. You can listen to the stereo music from the Audio Device through the headset and effect mute function by pressing Multifunction Button or Stop Button.

### ■ Volume Adjust

You can adjust the headset speaker volume during listening to music,

To increase the volume, press volume+

To decrease the volume, press volume-



## Auto Transformation between Phone Call and Music

### ■ Auto Transformation between Phone Call and Music

#### Pairing the headset with the mobile phone and Audio Device at the same time

- 1、 Pairing the headset with Audio Device via Bluetooth Dongle.(Audio Device such as PC,MP3,MP4,DVD and TV)
- 2、 After pairing, don't make Bluetooth connection between the headset and Audio device. The headset should be in standby status.
- 3、 Pair and connect the headset with mobile phone.
- 4、 Connect the headset with Audio Device.
- 5、 Now you have finished the pairing and connecting the headset with two devices at the same time.
- 6、 You can listen to the stereo music from the Audio Device through the headset and pause/ play the music play by pressing Multifunction Button.
- 7、 When you're listening to music and there is an incoming call, the headset will pause the music and you can hear the phone rings.
- 8、 You can answer a call by pressing the multifunction button and end a call by pressing the multifunction button again. Also, you can reject a call with the headset.
- 9、 The headset will play the music automatically after ending a call or rejecting a call.

## Product Specification

### ■ Product Specification

Bluetooth Version: 2.0

Bluetooth Profile Version: Headset Profile, Handsfree Profile and Advanced Audio Distribution Profile (A2DP)

Transmitting Power: Class 2

Working Distance Range: 10M

Frequency Range: 2.4026 GHz-2.480 GHz

Rechargeable Battery: Lithium polymer, 550mAh

Output Voltage: 5.0V (type350mA)

Charge Time: 3.5-4 hours

Talk Time: 14 hours

Listen Time: 12 hours

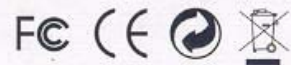
Standby Time: Up to 200 hours

Headset Size (Folded):128.3(L) x73.2 (W) x 38(Thickness) mm

Weight (main unit):67.8g

shuaixian

SHENZHEN SHUAIXIAN ELECTRONIC EQUIPMENT CO.,LTD.  
<http://www.shuaixian.cn>  
E-mail: [shuaixian@shuaixian.cn](mailto:shuaixian@shuaixian.cn)



Made in china