



User's Manual

for the

ATS J2200

For use with Internet Phone service by SunRocket

**To enjoy all the benefits of this product, please review the
information contained in this manual**



Introduction.....	4
Hardware Overview.....	4
Software Overview.....	4
IVR Interface for The ATS J2200X.....	5
Quick Guide of ATA Network setup automatically.....	7
ATA Network Setup Automatically Step By Step.....	8
Ethernet Adapter Detection.....	9
The Detection of the Network Environment.....	10
DHCP User Network Environment:.....	11
PPPoE User Network Environment:.....	12
Fix IP User Network Environment:.....	13
To Test J2200X Network Settings:.....	14
The Network Settings of J2200X was unsuccessful:.....	15
J2200X Reboot.....	16
The Installation Finished.....	17
Setup the ATS-J2200X by Web Browser.....	18
System Information.....	18
Single computer environment quick setup.....	20
Setting Up the TCP/IP Protocol.....	21
General Configuration.....	24
DHCP/Cable Users:.....	24
Fixed IP Users:.....	24
ADSL Users (PPPoE dial-up connection):.....	25
Multiple computers environment quick setup:.....	27
Phone Book.....	29
Phone Settings.....	29
Call Forwarding:.....	29
Volume Settings:.....	30
Network.....	31
SIP Settings.....	33
System Auth.....	34
Save Change & Reboot.....	35
Update.....	35
Engineering webpage.....	36
Engineer usage webpage list.....	36
Update.htm.....	36
Natset.htm.....	37
Dmzset.htm.....	37
Vsset.htm.....	38



Toneset.htm	38
Speakerset.htm.....	38
Vlanset.htm.....	39
Setup the ATS-J2200X by using Console (Hyper Terminal).....	40
How to make a phone call	49
Get a FWD account	49

Introduction

This user's manual is for ATS J2200X. It will explain the IVR instruction, web configuration and command line configuration for the ATS J2200X. Before using the ATS J2200X, some setup processes are required to make the ATS J2200X work properly. Please refer to the Setup Menu for further information.

Hardware Overview

The ATS J2200X has the following interfaces for Networking, telephone interface, LED indication, and power connector.

- 1.1.1 Two RJ-45 Networking interface, these two interfaces support 10/100Mps Fast Ethernet. You can connect one RJ-45 Fast Ethernet port to the ADSL or Switch, and connect the other one to your computer.
- 1.1.2 One RJ-11 Type analog telephone jack interfaces. You can connect one analog telephone to the terminal adapter.
- 1.1.3 LED Indication: There are three LED indicators in the ATA-1000 to show the Power, Register, and Off-Hook indication.

Software Overview

- Network Protocol
 - SIP v1 (RFC2543), v2(RFC3261)
 - IP/TCP/UDP/RTP/RTCP
 - IP/ICMP/ARP/RARP/SNTP
 - TFTP Client/DHCP Client/ PPPoE Client
 - Telnet/HTTP Server
 - DNS Client
 - NAT/DHCP Server
- Codec
 - G.711: 64k bit/s (PCM)
 - G.723.1: 6.3k / 5.3k bit/s
 - G.726: 16k / 24k / 32k / 40k bit/s (ADPCM)
 - G.729A: 8k bit/s (CS-ACELP)
 - G.729B: adds VAD & CNG to G.729
- Voice Quality
 - VAD: Voice activity detection
 - CNG: Comfortable noise generator
 - LEC: Line echo canceller
 - Packet Loss Compensation
 - Adaptive Jitter Buffer
- Call Function
 - Call Hold

- Call Waiting
- Call Forward
- Caller ID
- 3-way conference
- DTMF Function
 - In-Band DTMF
 - Out-of Band DTMF
 - SIP Info
- SIP Server
 - Registrar Server (three SIP account)
 - Outbound Proxy
- Tone
 - Ring Tone
 - Ring Back Tone
 - Dial Tone
 - Busy Tone
 - Programming Tone
- Phone Function
 - Volume Adjustment
 - Speed dial key
 - Phone book
 - Flash
- IP Assignment
 - Static IP
 - DHCP
 - PPPoE
- Security
 - HTTP 1.1 basic/digest authentication for Web setup
 - MD5 for SIP authentication (RFC2069/ RFC 2617)
- QoS
 - ToS field
- NAT Traversal
 - STUN
- Configuration
 - Web Browser
 - Console/Telnet
 - IVR/Keypad
- Firmware Upgrade
 - TFTP
 - Console
 - HTTP

IVR Interface for The ATS J2200X

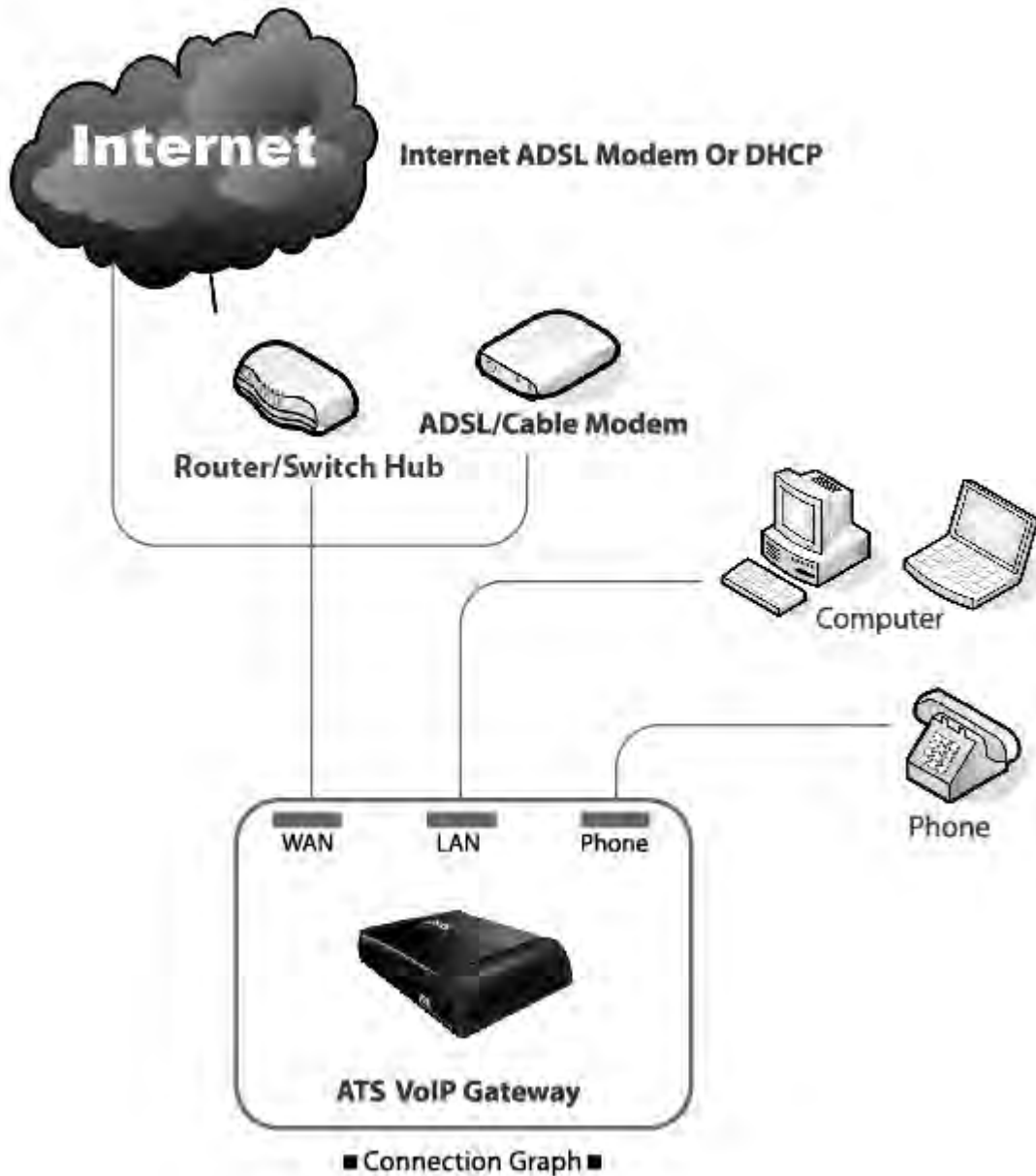
You can use the PSTN phone to configure the ATS J2200X. Please follow the instruction to configure your terminal adapter.



Group	IVR Action	IVR Menu	Parameter (s)	Notes
Function	Reboot	#195#	None	After you hear "Option Successful," hang-up. The system will reboot automatically.
Function	Factory Reset	#198#	None	System will automatically Reboot. WARNING: ALL "User-Changeable" NONDEFAULT SETTINGS WILL BE LOST! This will include network and service provider data.
Info	Check IP Address	#120#	None	IVR will announce the current IP address of the ATA-1000
Info	Check IP Type	#121#	None	IVR will announce if DHCP is enabled or disabled.
Info	Check Phone Number	#122#	None	IVR will announce current in use VoIP number
Info	Check Network Mask	#123#	None	IVR will announce the current network mask of the ATA-1000.
Info	Check Gateway IP Address	#124#	None	IVR will announce the current gateway IP address of the ATA-1000.
Info	Check Primary DNS Server Setting	#125#	None	IVR will announce the current setting in the Primary DNS field.
Info	Check Firmware Version	#128#	None	IVR will announce the version of the firmware running on the ATA-1000.
Setting	Set DHCP client	#111#	None	The system will change to DHCP Client type.
Setting	Set Static IP Address	#112xxx*xxx*xxx*xxx#	Enter IP address using numbers on the telephone key pad. Use the * (star) key when entering a decimal point.	DHCP will be disabled and system will change to the Static IP type.
Setting	Set Network Mask	#113xxx*xxx*xxx*xxx#	Enter value using numbers on the telephone key pad. Use the * (star) key when entering a decimal point.	Must set Static IP first.
Setting	Set Gateway IP Address	#114xxx*xxx*xxx*xxx#	Enter IP address using numbers on the telephone key pad. Use the * (star) key when entering a decimal point.	Must set Static IP first.
Setting	Set Primary DNS Server	#115xxx*xxx*xxx*xxx#	Enter IP address using numbers on the telephone key pad. Use the * (star) key when entering a decimal point.	Must set Static IP first.
Setting	Set Codec	#130+[1-8]#	1:G.711 u-Law, 2: G.711 a-Law, 3: G.723.1, 4: G.729a, 5: G.726 16K, 6: G.726 24K, 7: G.726 32K, 8: G.726 40K,	You can set the codec you want to the first priority.
Setting	Set Handset Gain	#131+[00~15]#	Handset Gain from 0~15	You can set the Handset gain to proper value, default is 6.
Setting	Set Handset Volume	#132+[00~12]#	Handset Volume from 0~12	You can set the Handset volume to proper value, default is 10.

Quick Guide of ATA Network setup automatically

You can enjoy the ATA free and relaxed with connect network. You just connect it by following step, you do talk to anybody with the ATA.



Refer to the Connection Graph above; connect ATS-J2200X with your personal computers and telephone:

- Connect your modem and WAN port of ATS-J2200X with network cable.
- Connect your computer and LAN/PC port of ATS-J2200X with network cable
- Connect your telephone cable to the phone port of ATS-J2200X.
- Connect the power cord to ATS-J2200X power port.

According to the connection with ATS-J2200X will be installed network setting automatically

until **put on** the **CD-ROM**. The installation will lead you set up the Ethernet by step automatically.

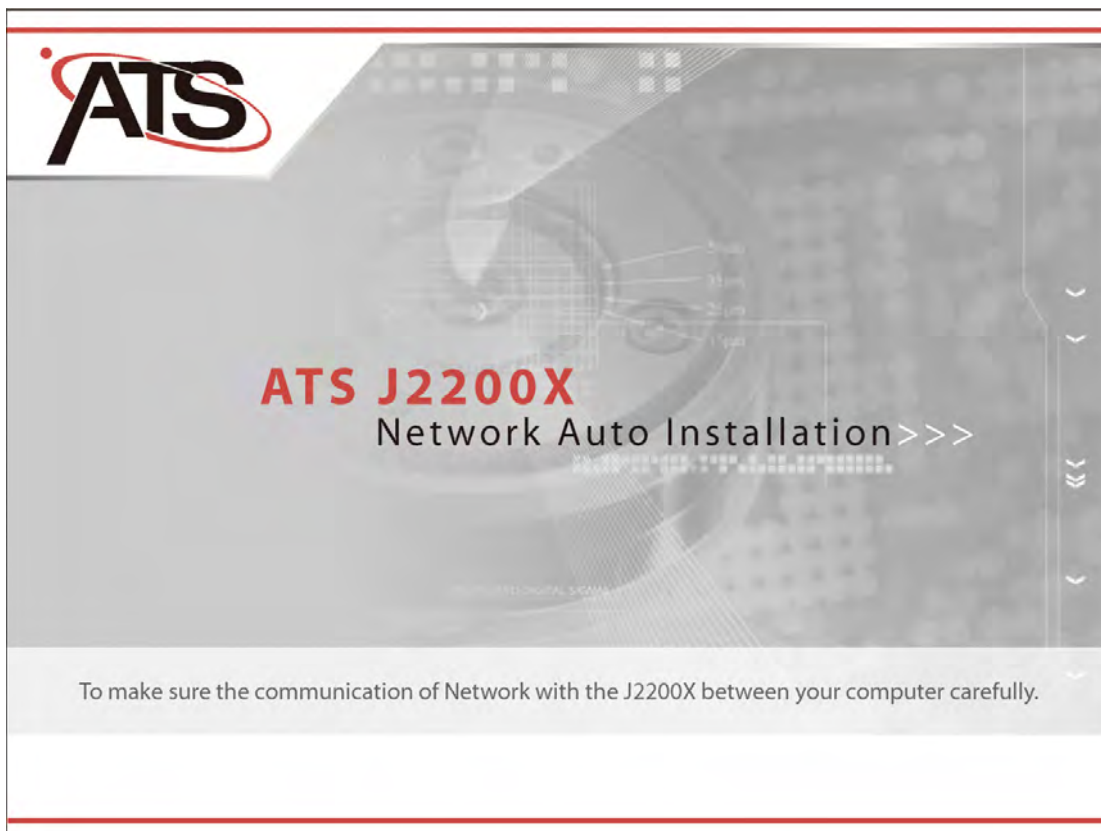
Step1: To make sure the connection between your computer with the ATA Box.

Step2: Put the installed **CD-ROM** into the computer CD-ROM drive.

Step3: The installation will be implemented automatically.

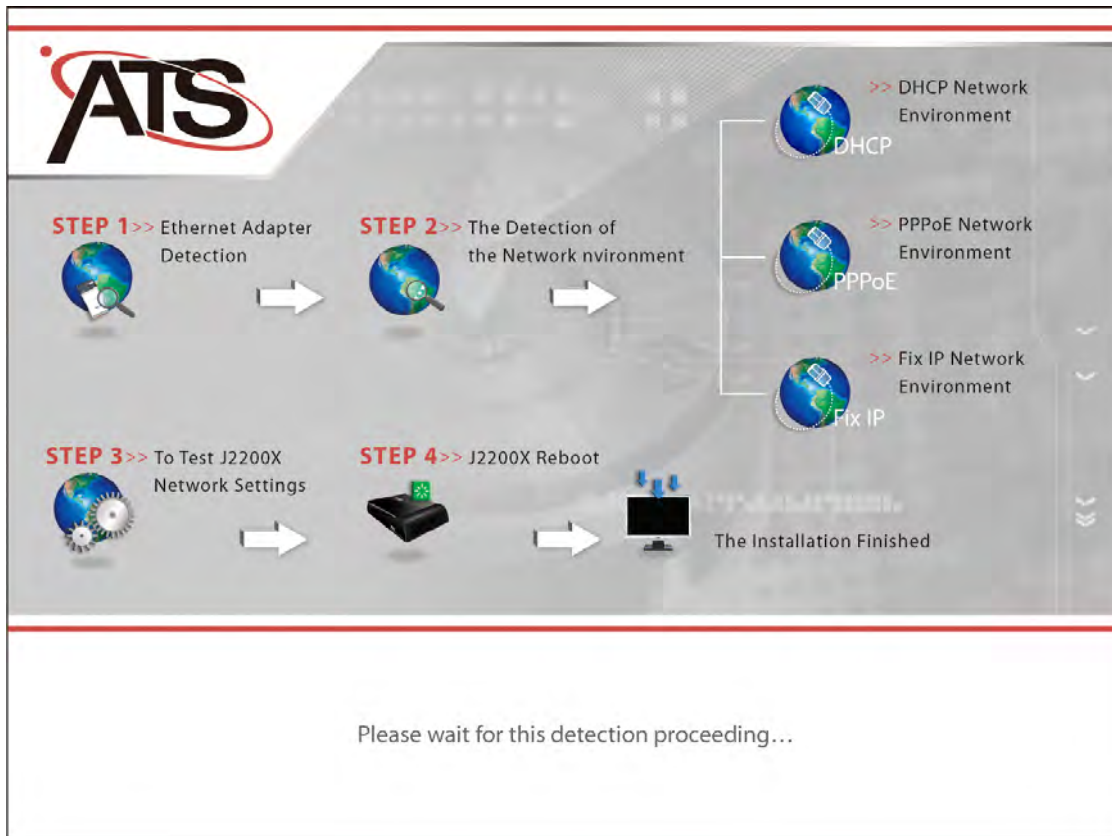
Step4: Just wait about 3~5 minutes until the **ATS-J2200X** set up ready. It has to take so much time while you set up the **ATS-J2200X** at first time, Please hold on a minute.

Step5: After the ATA finished setting network condition, the ATA will reboot and download the web configure file by itself automatically. You will see the **REG LED ON** then you can pick the phone up and enjoy your calling with the ATA. And the computer will be working well by installing automatically.



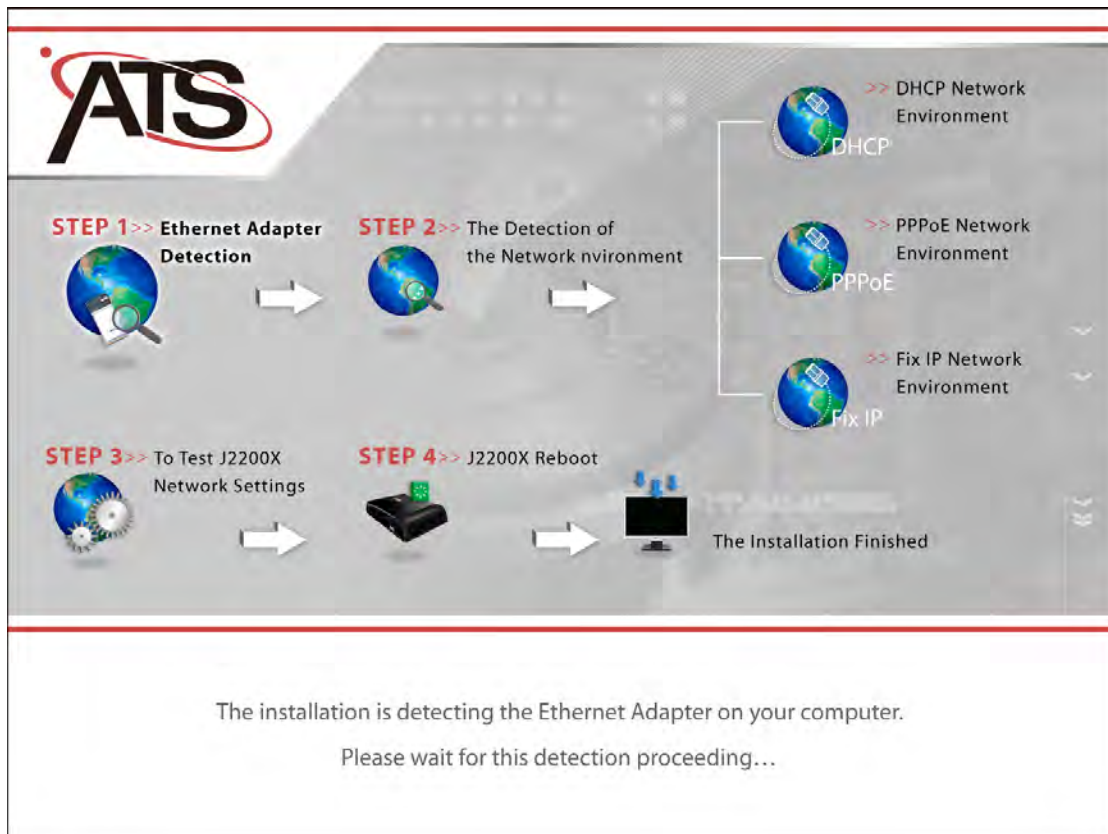
ATA Network Setup Automatically Step By Step

While user put on the CD-ROM and auto run by drive, the information page will show on your screen step by step.



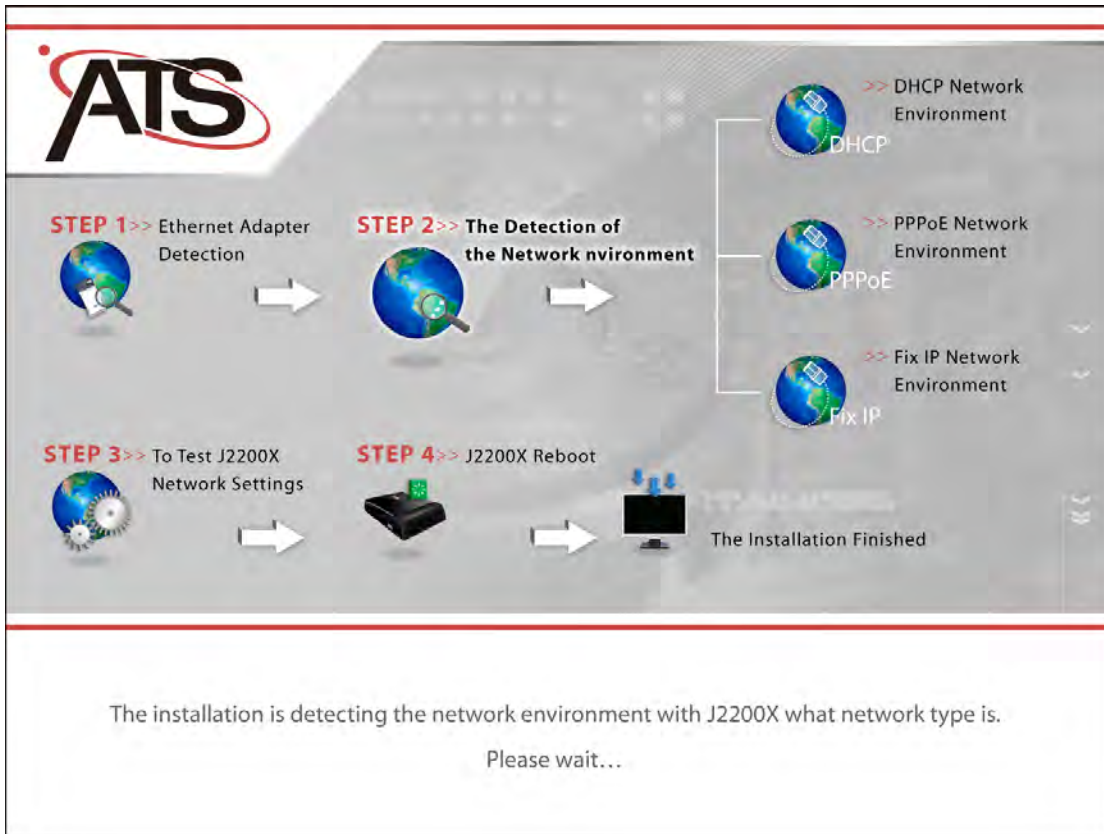
Ethernet Adapter Detection

The installation will check out your computer Ethernet adapter first if you have more than one piece of Ethernet adapters. If you have two Ethernet adapters at least, you have to select the Ethernet adapter you would like to work with internet. Otherwise you will skip this step of installation.



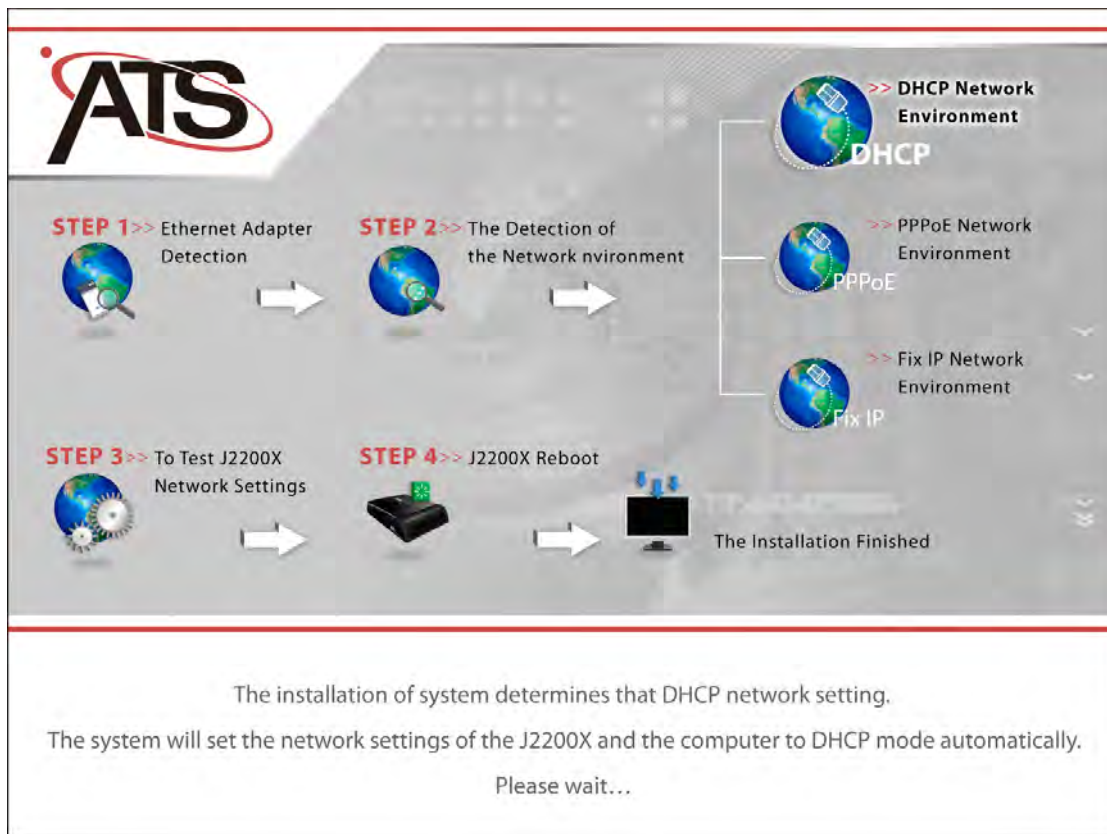
The Detection of the Network Environment

The installation is detecting the network environment with J2200X what network type is. Please wait...



DHCP User Network Environment:

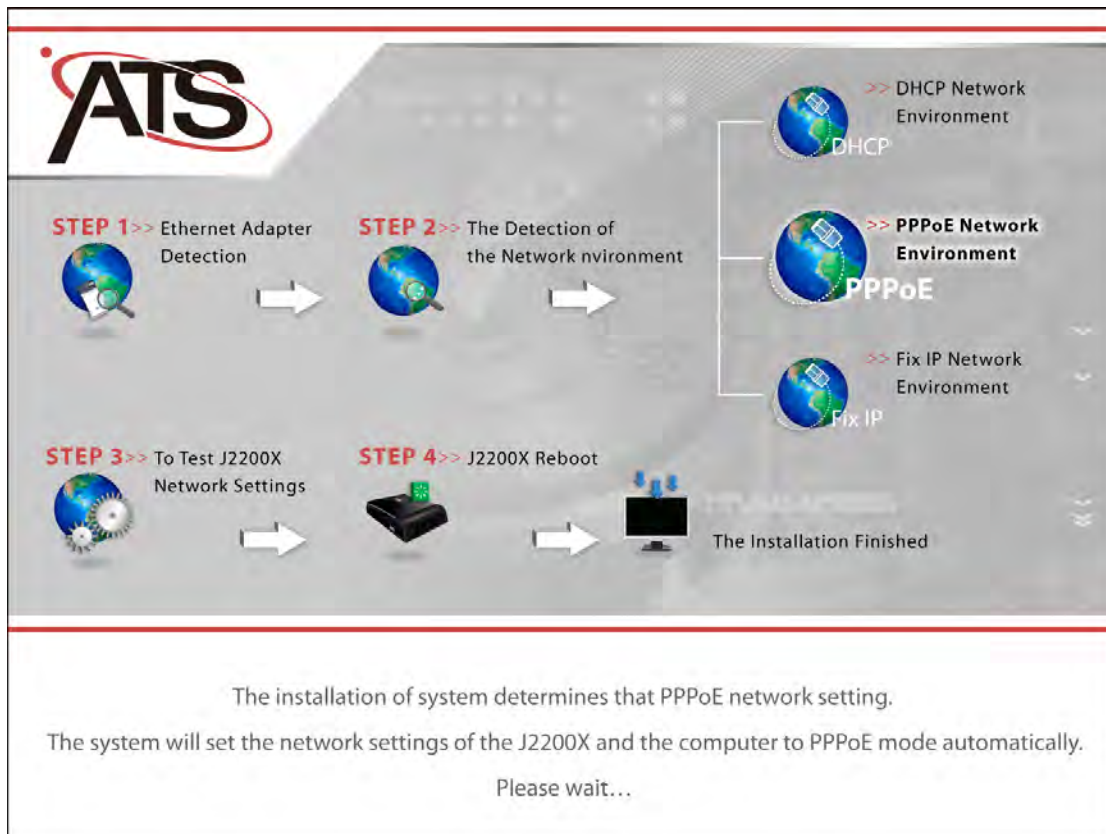
The installation will auto detect your network environment after put on the CD-ROM with connection of ATA. Just wait 5 minutes the ATA will detect the DHCP network or Cable Modem network by itself and set your computer to DHCP mode automatically. While the ATA reboot and REG LED ON with the installation had finished. Then you can get to call with ATA and the computer will get DHCP IP from the ATA LAN/PC port.



PPPoE User Network Environment:

The installation will auto detect your network environment after put on the CD-ROM with connection of ATA. Just wait 5 minutes the ATA will detect the PPPoE network by itself and setup your computer to DHCP mode automatically.

1. By detecting PPPoE settings with connection of the ATA, while the page lead you to dial the PPPoE from your computer, you have to click the PPPoE dialer on your computer to connect internet and make sure you do connect the internet successful.
2. The ATA PPPoE detection will auto set according to your PPPoE dialer through your computer.
3. Just wait for 3~5 minutes the ATA will set itself well. If it failed, please redial PPPoE function from the computer.
4. Then the ATA had been installed successfully and the computer had been set for DHCP client to get new IP from the ATA LAN/PC port.



PPPoE Dialer

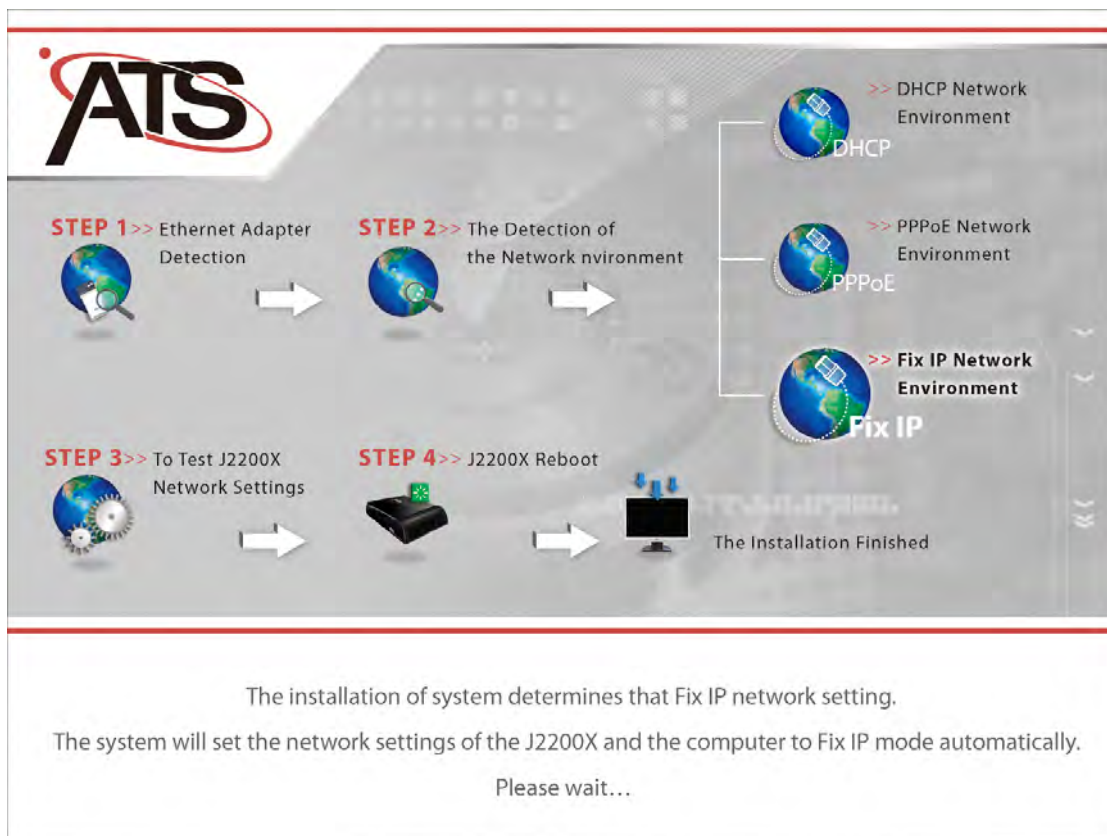
Please redial the PPPoE Dialer on your computer
for the purpose of settings with the J2200X and the computer.

Please redial the PPPoE function on your computer...

Fix IP User Network Environment:

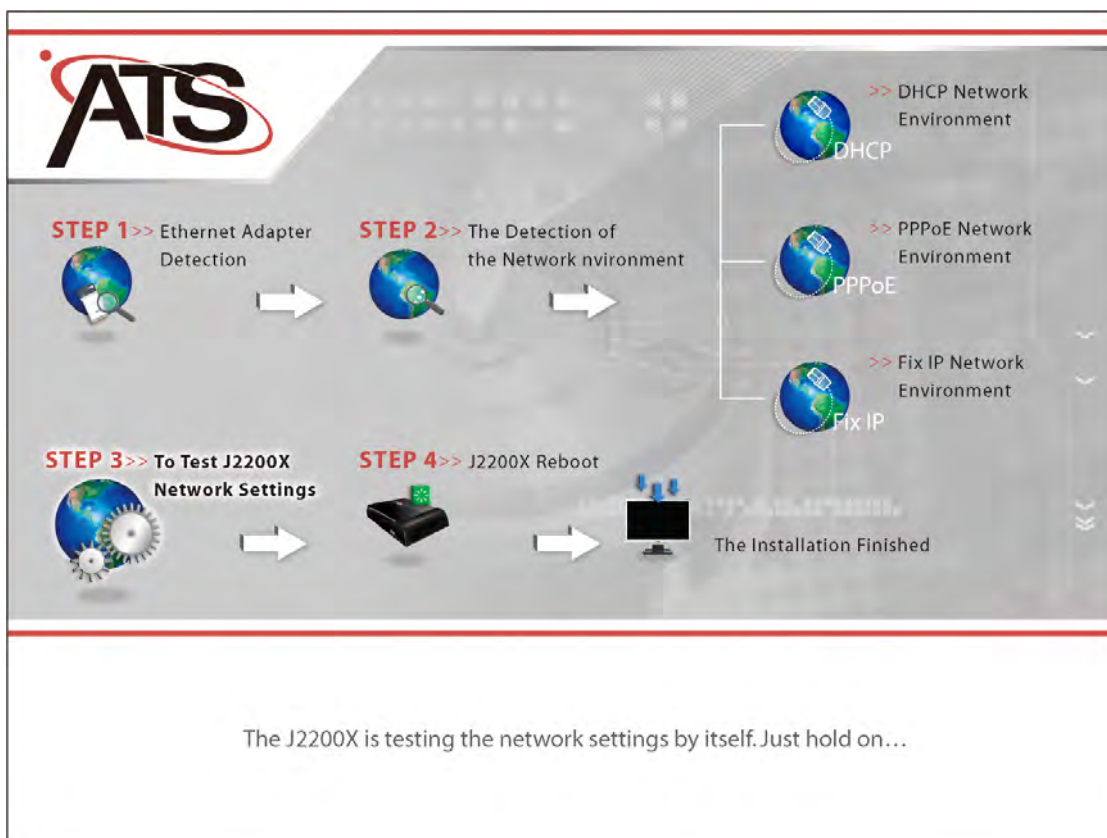
The installation will auto detect your network environment after put on the CD-ROM with connection of ATA. Just wait 5 minutes the ATA will detect the Fix IP network by itself and setup your computer to DHCP mode automatically.

While the ATA reboot and REG LED ON with the installation had finished. Then you can get to call with ATA and the computer will get DHCP IP from the ATA LAN/PC port.



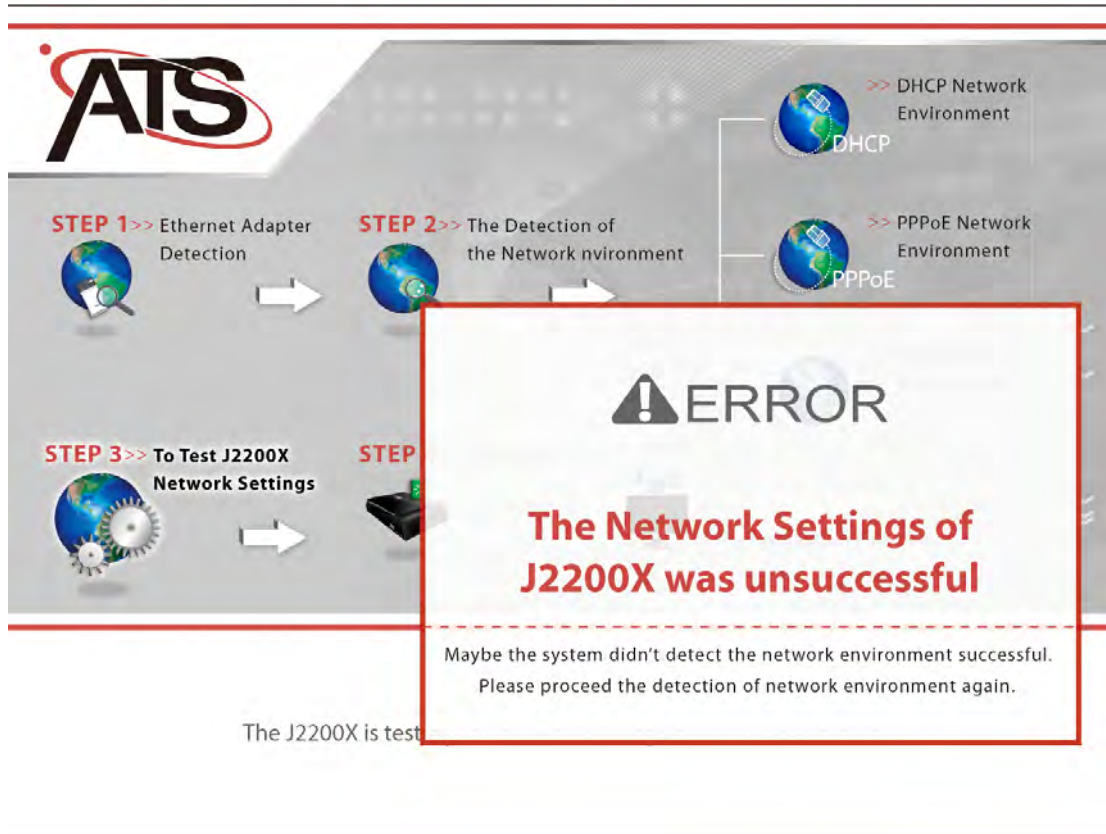
To Test J2200X Network Settings:

After network environment settings, the J2200X is testing the network settings by itself. Just hold on...



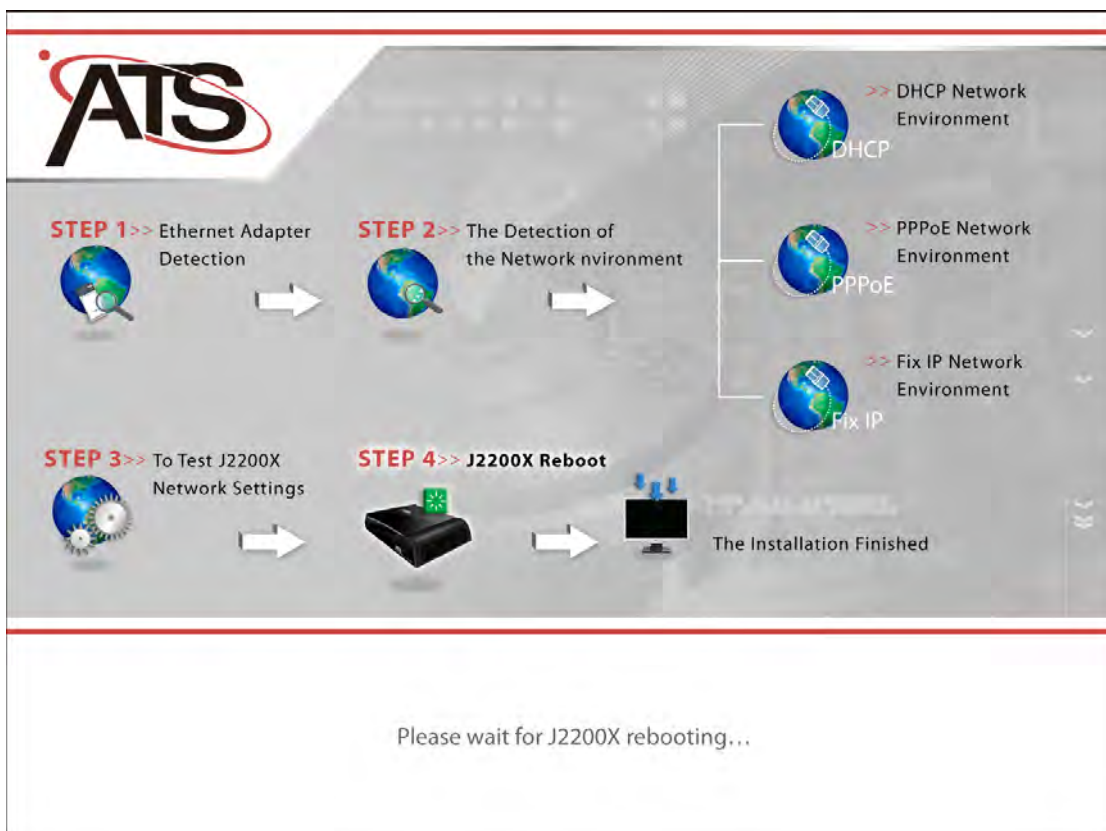
The Network Settings of J2200X was unsuccessful:

Maybe the system didn't detect the network environment successful. Please proceed the detection of network environment (Step II) again.



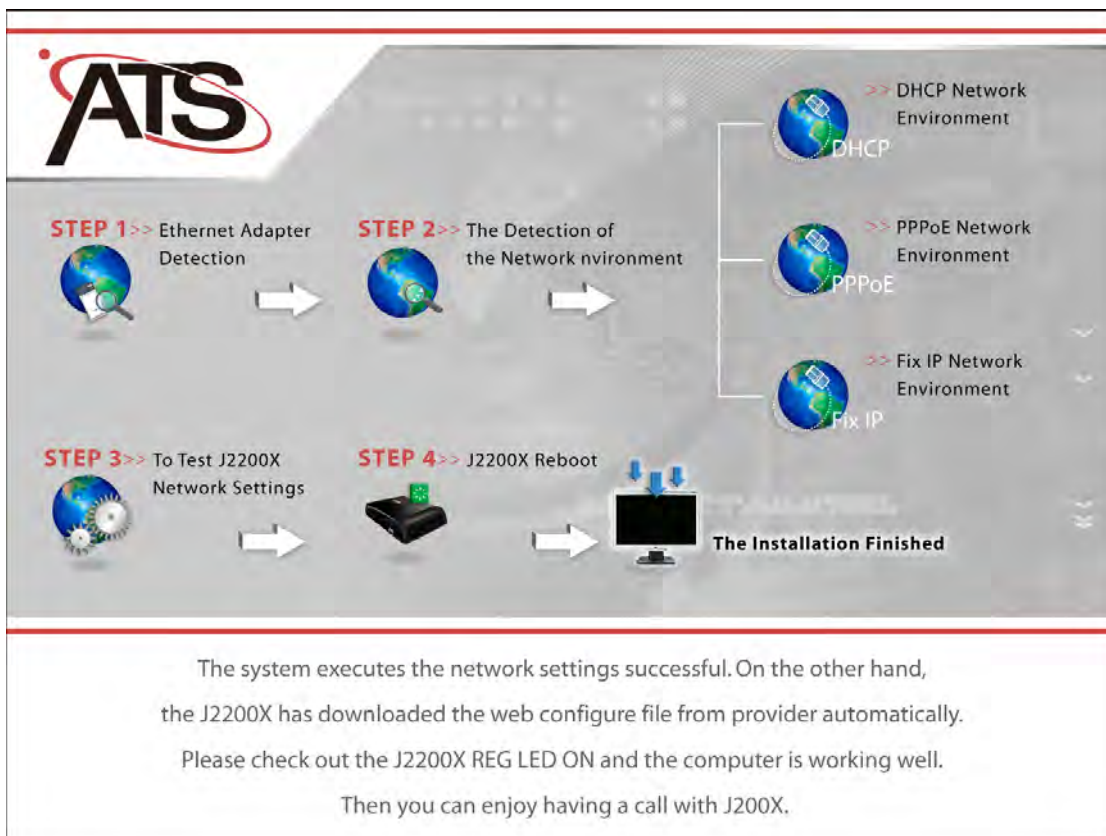
J2200X Reboot

Please wait for J2200X rebooting...



The Installation Finished

The system executes the network settings successful. On another hand, the J2200X has downloaded the web configure file from provider automatically. Please check out the J2200X REG LED ON and the computer is working well. Then you can enjoy having a call with J200X.

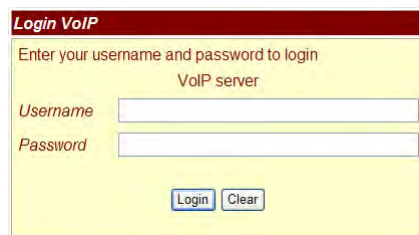


By foregoing step you still couldn't set the J2200X network settings, you have to setup the J2200X network settings by login into J2200X web browser.

Setup the ATS-J2200X by Web Browser

The ATS-J2200X provides a built-in web server. You could use Web browser (Internet Explorer, Mozilla Firefox etc.) to configure ATS-J2200X.

1. Launch your web browser and enter **http://192.168.251.1** (the default IP address of the ATS-J2200X) in the Location or Address field. Press Enter.
2. The password screen now appears. Input **username: user** and **password: test** into the blank field.
3. Click the [**Login**] button
4. After a successful login, you will see the ATS-J2200X web based management information page.



Note: If you make any change of settings in the Web Management interface, please do remember to click the [Submit] button in that page. A message showed *you have to save and reboot the VoIP to take effect* notice you to click [Save change & Reboot] on the navigation panel and click [Save] in the Save changes page. After the system reboot, all the settings will work properly.

System Information

- This is the web based management information page, you can see the ATS-J2200X current system information like firmware version, company... etc in this page.
- Click a link on the navigation panel to go to the corresponding function.



- Phone Book** ▶
- Phone Settings** ▶
- Network** ▶
- SIP Settings** ▶
- System Auth.**
- Save Change & Reboot**
- Update** ▶

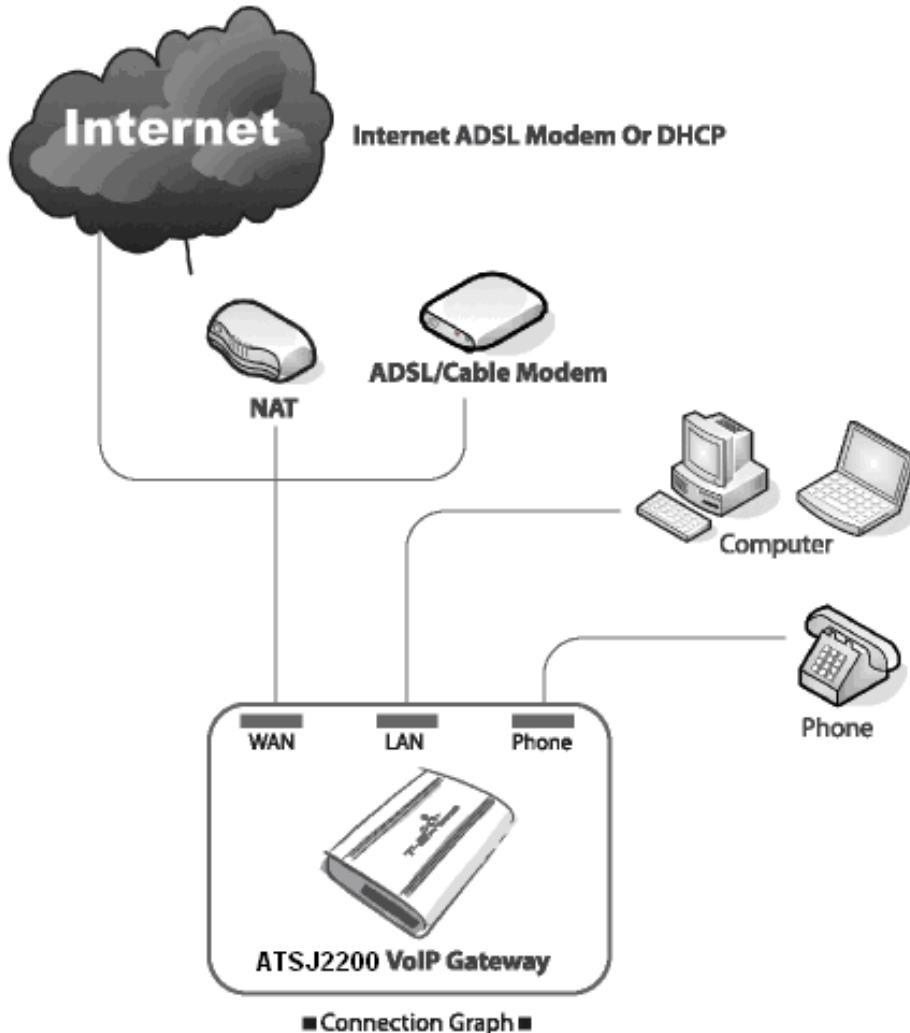
System Information

This page illustrate the system related information.

Model Name:	VoIP
Firmware Version:	Tue May 9 13:02:03 2006.
Codec Version:	Tue Apr 04 10:43:12 2006.

Table of Navigation	Sub-Manu	Description
Phone Book	Speed Dial Setting	Setup the Speed Dial number Speed Dial Phone information.
Phone Settings	Call Forwarding	You can set the forward number of your phone on this page.
	SNTP Settings	You can set the SNTP servers on this page.
	Volume Settings	You can set the volume of your phone on this page.
	Block Settings	You can set the block period of your phone on this page.
	Caller ID Settings	You can enable/disable the caller ID setting on this page.
	Dial Plan Settings	You can the set the dial plan on this page.
	Flash Time Settings	You can set the flash time on this page.
	Call Waiting Settings	You can enable/disable the call waiting setting on this page.
Network	T.38 (FAX) Settings	You can enable/disable the FAX function on this page.
	Network Status	This page shows current status of network interfaces of the system.
	WAN Settings	You can configure the WAN settings on this page.
SIP Settings	LAN Settings	You can configure the LAN settings on this page.
	Service Domain Settings	You can set information of service domains on this page.
	Port Settings	You can set the port number in this page.
	Codec Settings	You can set the codec settings on this page.
	Codec ID Setting	You can set the value of Codec ID on this page.
	DTMF Setting	You can set the DTMF setting in this page.
System Authority	RPort Setting	You can enable/disable the RPort setting on this page.
	Other Settings	You can set other settings on this page.
Save Change & Reboot		You have to save changes and reboot ATS-J2200X to com into effect.
Update	Update Firmware	You can update the newest firmware.
	Restore Default Settings	You can click the restore button to restore the factory settings.

Single computer environment quick setup



Refer to the Connection Graph above; connect ATSJ2200X with your personal computers and telephone:

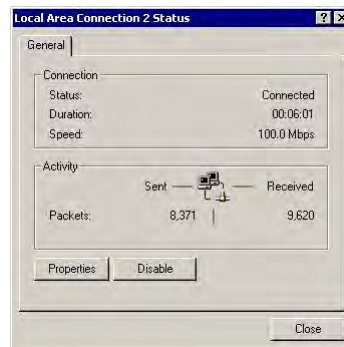
- Connect your modem and WAN port of ATSJ2200X with network cable.
- Connect your computer and LAN port of ATSJ2200X with network cable
- Connect your telephone cable to the phone port of ATSJ2200X.
- Connect the power cord to ATSJ2200X power port.

Power LED will be ON. The start-up process will take approximately 20 seconds.

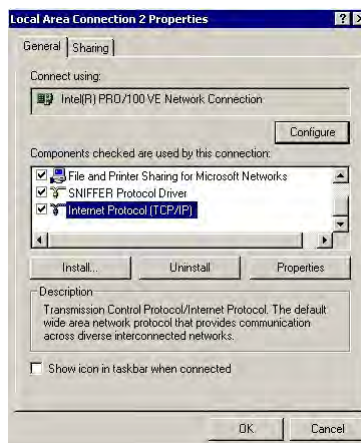
- REG LED ON: You may start to use VoIP services and make any phone calls.
- REG LED OFF: Internet status error. The ATSJ2200X is not successfully connected with internet. Please follow the steps below to configure ATSJ2200X.

Setting Up the TCP/IP Protocol

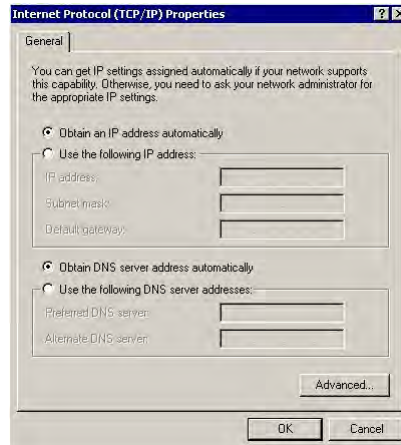
- Configuring Windows 2000 PCs
- 2 Find the Local Area Connection Status screen by clicking the **Start** button and then click on **Settings** and then **Control Panel**. From there, double click the **Network and Dial-up Connections Icon**, and finally the **Local Area Connection** item in the window that opens to see the window below (you may have several local area connection choices-choose the one that has your Ethernet adapter in the Device Name field):



- 3 Click the **Properties** icon to see the window below and then select the item **Internet Protocol (TCP/IP)** from the list.



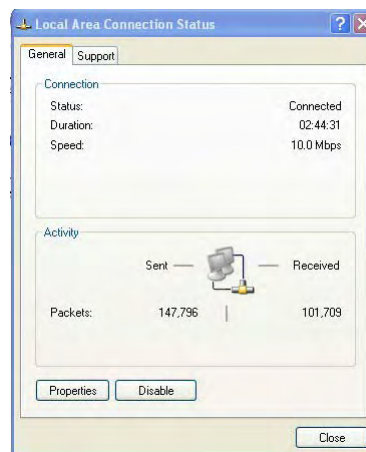
- 4 Click on the **Properties** button to see the window below. Select the items **Using the following IP address**. Enter IP address: **192.168.251.____** and Subnet Mask: **255.255.255.0** into the blank field. Click [OK] to finish setting.



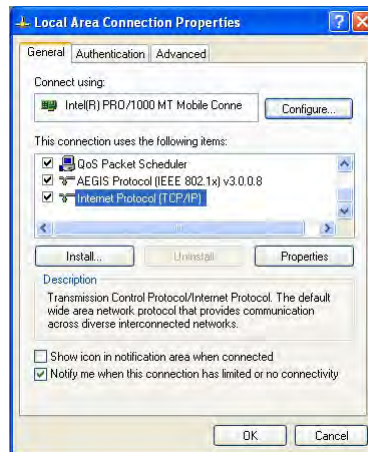
■ Configuring Windows XP PCs

These instructions assume you are running *Windows XP style menu* as the default interface. If you are using the *Classic Star menu* Interface, please follow the instructions for Windows 2000.

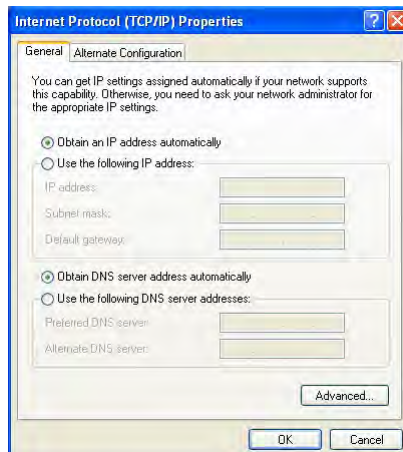
1. Find the Local Area Connection Status screen by clicking the **Start** button and then click on **Control Panel**. From there, click the **Network Connection** Icon, and finally the **Local Area Connection** item in the window that opens to see the window below:



2. Click the properties icon to see the window below and then select the item **Internet Protocol (TCP/IP)** from the list.



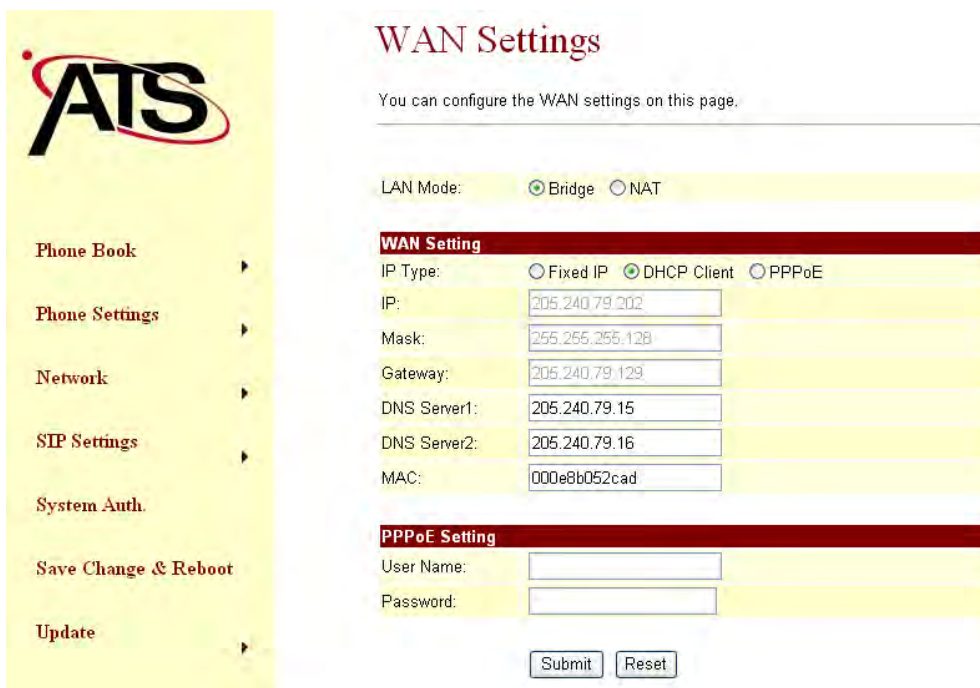
3. Click on the **Properties** button to see the window below. Select the items **Using the following IP address**. Enter IP address: **192.168.251.____** and Subnet Mask: **255.255.255.0** into the blank field. Click [OK] to finish setting.



General Configuration

DHCP/Cable Users:

- You can pick up telephone and dial **#111#**, ATS-J2200X will automatically reboot and obtain an IP address. Now wait for REG LED to light up and you may start using Provider services.
- Otherwise:
 1. Click [Network] on the navigation panel.
 2. Select sub-menu [WAN Settings].
 3. Select [DHCP mode] from IP Type table.
 4. Click the [Submit] button to continue.



WAN Settings

You can configure the WAN settings on this page.

LAN Mode: Bridge NAT

WAN Setting

IP Type: Fixed IP DHCP Client PPPoE

IP:

Mask:

Gateway:

DNS Server1:

DNS Server2:

MAC:

PPPoE Setting

User Name:

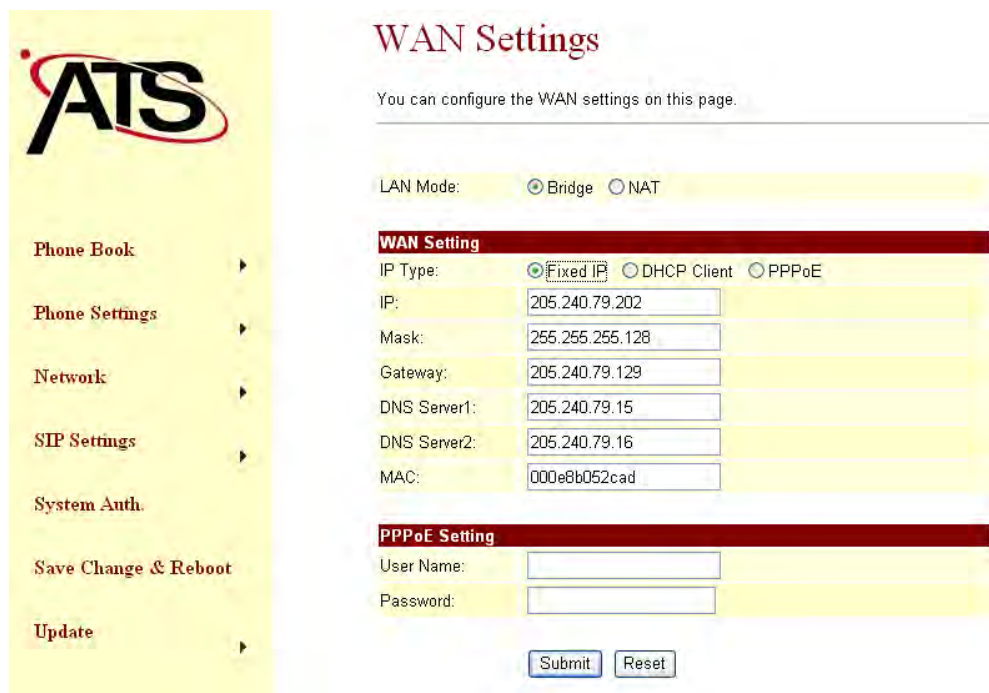
Password:

Fixed IP Users:

1. Click [Network] on the navigation panel.
2. Select sub-menu [WAN Settings].
3. Select [Fixed IP] from IP Type table.
4. Input the below Information "IP address", "Mask", "Gateway", and "DNS server" etc. (You

may contact your ISP to get these information).

5. Click the [Submit] button to continue.



WAN Settings

You can configure the WAN settings on this page.

LAN Mode: Bridge NAT

WAN Setting

IP Type: Fixed IP DHCP Client PPPoE

IP:

Mask:

Gateway:

DNS Server1:

DNS Server2:

MAC:

PPPoE Setting

User Name:

Password:

ADSL Users (PPPoE dial-up connection):

1. Click [Network] on the navigation panel.
2. Select sub-menu [WAN Settings].
3. Select [PPPoE] from IP Type table.
4. Input the below Information ADSL username and password.
5. Click the [Submit] button to continue.

[Phone Book](#)[Phone Settings](#)[Network](#)[SIP Settings](#)[System Auth.](#)[Save Change & Reboot](#)[Update](#)

WAN Settings

You can configure the WAN settings on this page.

LAN Mode: Bridge NAT

WAN Setting

IP Type: Fixed IP DHCP Client PPPoE

IP:

Mask:

Gateway:

DNS Server1:

DNS Server2:

MAC:

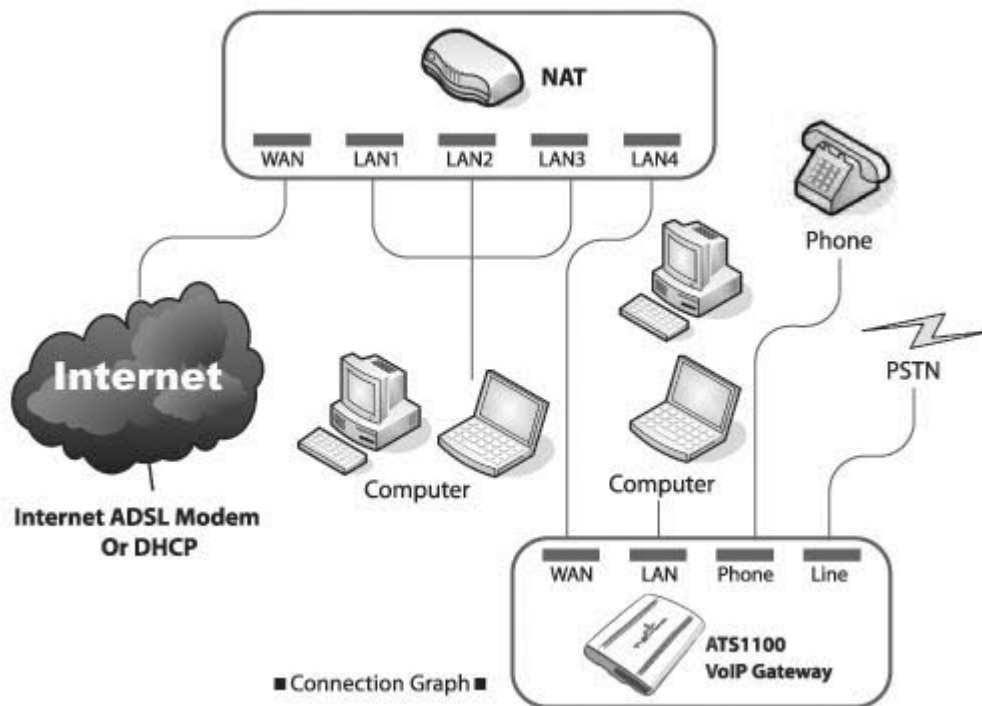
PPPoE Setting

User Name:

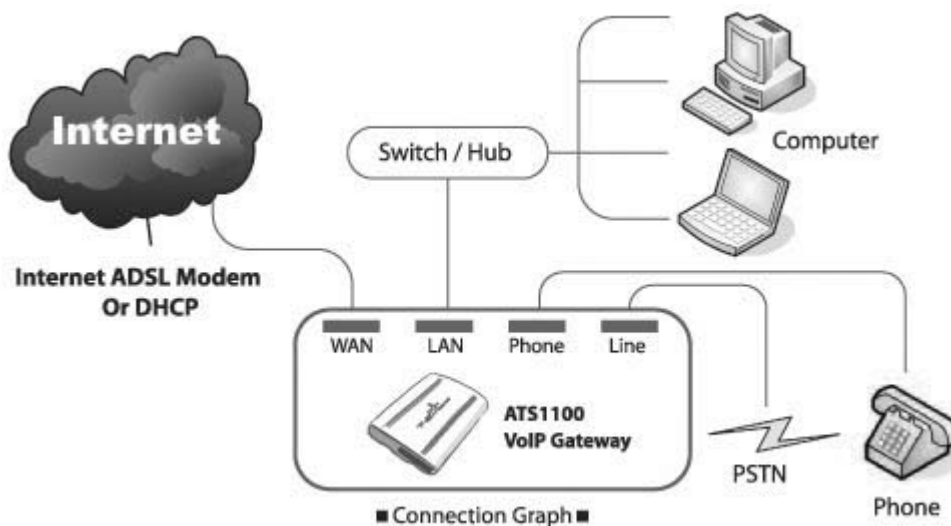
Password:

Multiple computers environment quick setup:

1. NAT (Network Address Translation) owners: Just connect your ATS-J2200X with one of the LAN port of NAT then pick up your telephone and dial “#111#” . Wait ATS-J2200X to restart then you may start to make phone calls.



2. If you do not have a NAT: Let ATS-J2200X to start up DHCP / NAT features to provide other computers are able to browse internet through ATS-J2200X.





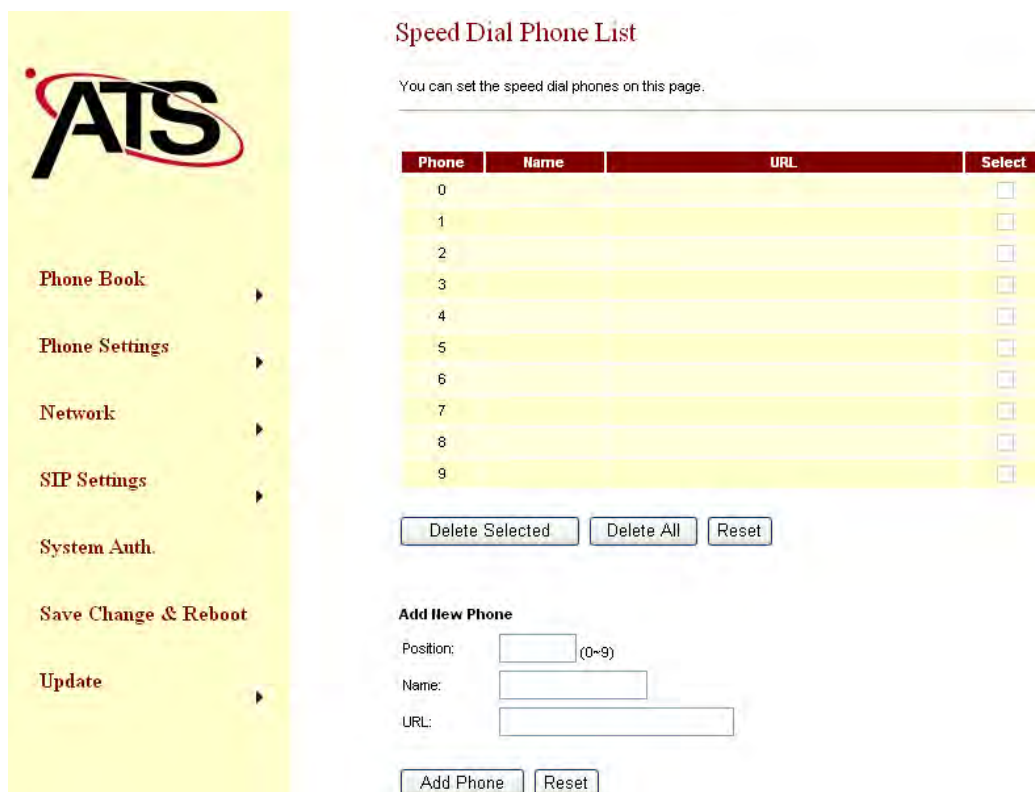
Refer to the graph above; connect ATS-J2200X with Switch/Hub, computer, and telephone:

- Connect modem and WAN port of ATS-J2200X with network cable.
- Connect Switch/Hub and LAN port of ATS-J2200X with network cable
- Connect all computers with Switch/Hub with network cables.
- Connect the telephone with the Phone port of ATS-J2200X with phone cable.
- Connect power cord to ATS-J2200X power port

Power LED will be ON. The start-up process will take approximately 20 seconds.

Phone Book

1. Configuration the VoIP Gateway Phone Book. Click [Phone Book] on the navigation panel and select [Speed Dial Settings].
2. In Speed Dial Settings page, you can add/delete Speed Dial numbers.
 - Add a phone number: Enter the “Index position number”, “Name”, and “phone number” (by URL type) of the destination and click [Add Data] button.
 - Delete a phone number: Select the phone number you want to delete and click [Delete Selected] button.
 - Delete all phone numbers: Click [Delete All] button.
3. ATS-J2200X support maximum 10 sets Phone book entries. It is easy to call someone by dial the index position number (from 0~9) then press “#”.



Speed Dial Phone List

You can set the speed dial phones on this page.

Phone	Name	URL	Select
0			<input type="checkbox"/>
1			<input type="checkbox"/>
2			<input type="checkbox"/>
3			<input type="checkbox"/>
4			<input type="checkbox"/>
5			<input type="checkbox"/>
6			<input type="checkbox"/>
7			<input type="checkbox"/>
8			<input type="checkbox"/>
9			<input type="checkbox"/>

Add New Phone

Position: (0~9)

Name:

URL:

Phone Settings

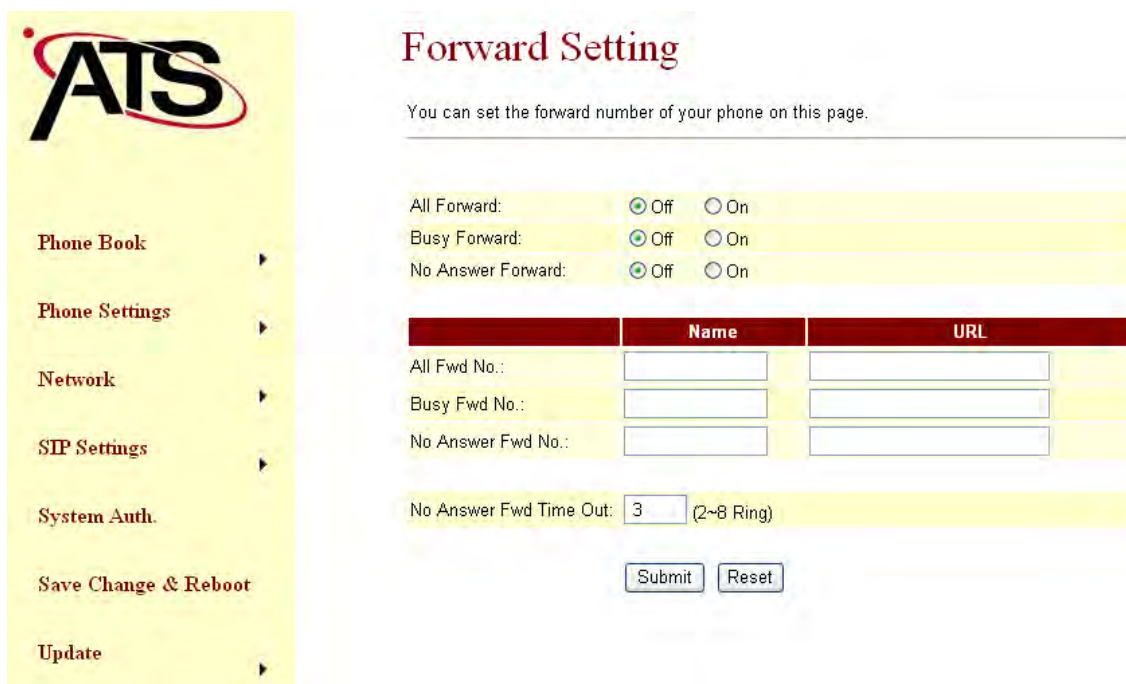
In Phone Setting contains Call Forward, SNTP Settings, Volume Settings, Block Setting, Caller ID, Auto Dial Setting, Flash Time Setting and Call Waiting Setting functions.

Call Forwarding:

You can set the phone number you want to forward in this page. There are three type of

Forward mode. You can choose All Forward, Busy Forward, and No Answer Forward by click the icon. When you completed the setting, please click the [Submit] button.

- All Forward: Forward it unconditionally. Enter specify name and phone number (by URL type) in the field.
- Busy Forward: While line is engaged or phone set is off-hook, forward to other number. Enter specify name and phone number (by URL type) in the field.
- No Answer Forward: While no one answers the call, forward to the number you specified. Enter the name and the phone number (by URL type) in the field.



Forward Setting

You can set the forward number of your phone on this page.

All Forward: Off On
 Busy Forward: Off On
 No Answer Forward: Off On

	Name	URL
All Fwd No.:	<input type="text"/>	<input type="text"/>
Busy Fwd No.:	<input type="text"/>	<input type="text"/>
No Answer Fwd No.:	<input type="text"/>	<input type="text"/>

No Answer Fwd Time Out: (2~8 Ring)

Volume Settings:

You can set the Handset Volume, Ringer Volume, and the Handset Gain. When you completed the setting, please click the [Submit] button.

- Handset Volume: Set the handset volume stands, which can be heard from Gateway side
- Ringer Volume: Set the ring volume stands, which can be heard from Gateway side.
- PSTN-Out Volume: Set the PSTN volume stands, which can be heard from Gateway side.
- Handset Gain: Set the gain stands, which the opposite party hears.
- PSTN-In Gain: Set the gain stands, which the opposite party hears.



Volume Setting

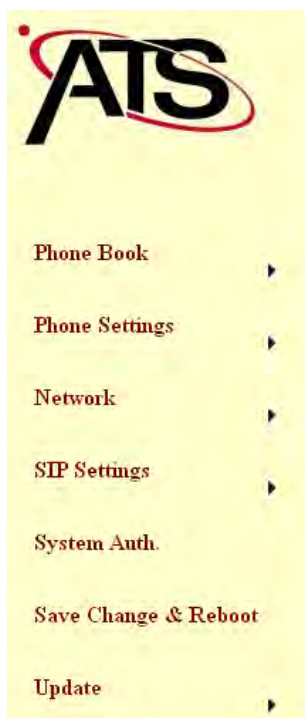
You can set the volume of your phone on this page.

Handset Volume: (0~12)

Handset Gain: (0~15)

Network

1. In Network you can check the Network status, configure the Network Settings.
2. **Network Status:** You can check the current Network setting in this page.



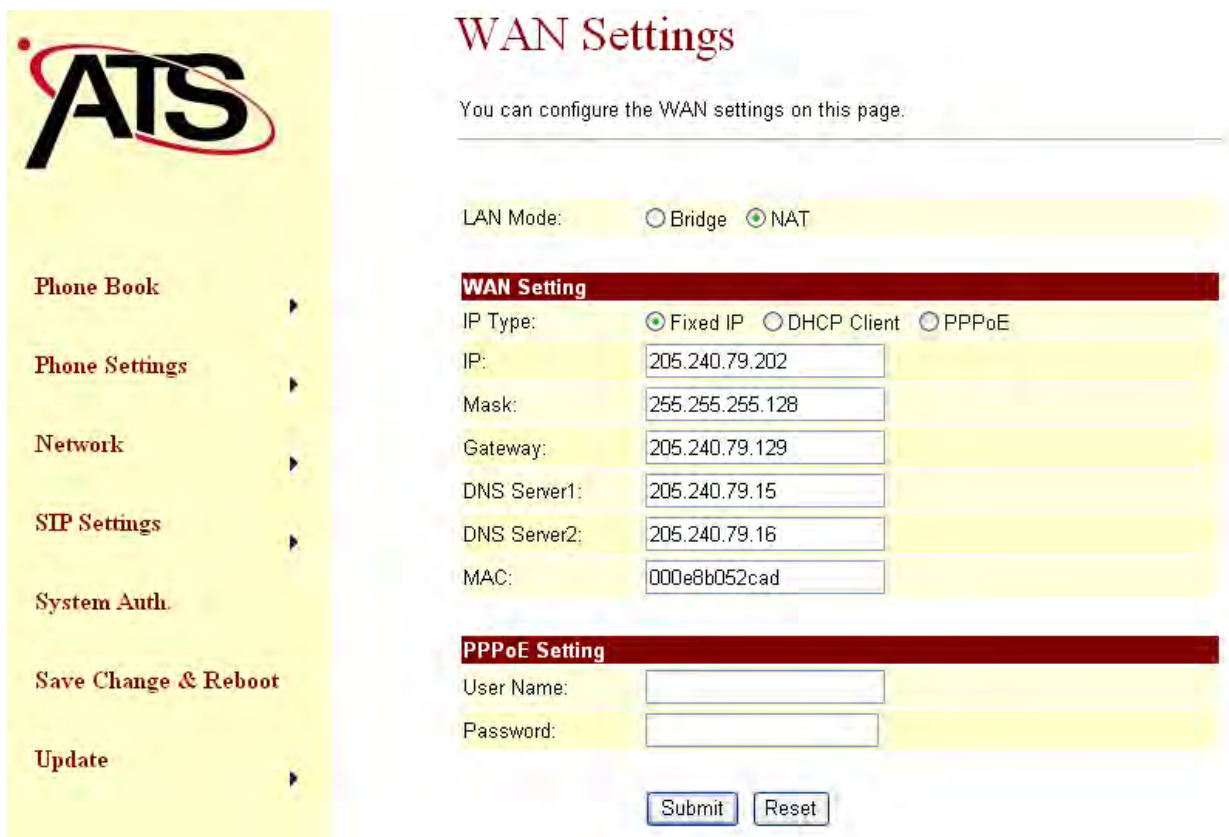
Network Status

This page shows current status of network interfaces of the system.

Interface 0	
Type:	Fixed IP Client
IP:	205.240.79.202
Mask:	255.255.255.128
Gateway:	205.240.79.129
DNS Server 1:	205.240.79.15
DNS Server 2:	205.240.79.16

Interface 1	
Type:	DHCP Server
IP:	192.168.1.100
Mask:	255.255.255.0
Gateway:	192.168.123.1
DNS Server 1:	205.240.79.15
DNS Server 2:	205.240.79.16

3. **WAN Settings:** You can configure the **ATS J2200X** WAN setting in this page.
 - The **LAN Mode** is to set the **ATS J2200X** Bridge mode or Router mode. If you set the Bridge Mode, then the two Fast Ethernet ports will be transparent. Otherwise, if you set the NAT Mode, then the LAN port would router access.
 - The WAN Setting Configuration item is to set the WAN port's network environment. You may refer to your current network environment to configure the **ATS J2200X** properly.
 - The PPPoE Configuration item is to set the PPPoE Username and Password. If you have the PPPoE account from your Service Provider, please input the Username and the Password correctly.
 - When you finished the setting, please click the Submit button.



WAN Settings

You can configure the WAN settings on this page.

LAN Mode: Bridge NAT

WAN Setting

IP Type: Fixed IP DHCP Client PPPoE

IP:

Mask:

Gateway:

DNS Server1:

DNS Server2:

MAC:

PPPoE Setting

User Name:

Password:

4. **LAN Settings:** You can configure the **ATS J2200X** LAN setting in this page.
 - The LAN Setting item that you could set the router mode address.
 - The **IP** was Router mode of LAN port's Ethernet address. Ex: **192.168.123.1**, this means LAN address would be **192.168.123.xxx** Ethernet class.
 - The **Mask** was Ethernet Mask that you could set it what you want to set.
 - The **MAC** was **ATSJ2200X** LAN port's MAC number.
5. **DHCP SERVER**
 - The DHCP SERVER is for the other devices to get the IP address from the device. You can choose to use DHCP server or not.

- You could set **start IP and End IP** what you want to do for the other devices to get the IP address from the ATAJ2200's LAN port.
- When you finished the setting, please click the Submit button.
- Then don't forget click the save button.

LAN Settings

You could configure the LAN settings in this page.

LAN Setting	
IP:	<input type="text" value="192.168.123.1"/>
Mask:	<input type="text" value="255.255.255.0"/>
MAC:	<input type="text" value="00aabbccdde8"/>

DHCP Server	
DHCP Server:	<input checked="" type="radio"/> On <input type="radio"/> Off
Start IP:	<input type="text" value="150"/>
End IP:	<input type="text" value="200"/>
Lease Time:	<input type="text" value="1"/> : <input type="text" value="0"/> (dd:hh)

SIP Settings

1. In Service Domain Function, you need to input the account and the related information. In this page, please refer to your ISP provider. You can register three SIP account in the **ATS-J2200X**. You can dial the VoIP phone to your friends via first enable SIP account and receive the phone from these three SIP accounts. For the second phone you can use the same way to register.
2. First you need click Active to enable the Service Domain, then you can input the following items:
 - Display Name: you can input the name you want to display.
 - User Name: you need to input the User Name get from your ISP.
 - Register Name: you need to input the Register Name get from your ISP.
 - Register Password: you need to input the Register Password get from your ISP.

- Domain Server: you need to input the Domain Server get from your ISP.
 - Proxy Server: you need to input the Proxy Server get from your ISP.
 - Outbound Proxy: you need to input the Outbound Proxy get from your ISP. If your ISP does not provide the information, then you can skip this item.
 - Register Period: you need to input the Register Period get from your ISP. This is count in minute.
3. You can see the Register Status in the Status item. If the item shows “Registered”, then your **ATS-J2200X** is registered to the ISP, you can make a phone call directly.
 4. When you finished the setting, please click the Submit button.

Service Domain Settings

You can set information of service domains on this page.

Realm 1 (Default)

Active: On Off

Display Name:

User Name:

Register Name:

Register Password:

Domain Server:

Proxy Server:

Outbound Proxy:

Status: Not Registered

Realm 2

Active: On Off

Display Name:

User Name:

Register Name:

System Auth.

In System Authority you can change your login name and password.

System Authority

You could change the login username/password in this page

New username:

New password:

Confirmed password:

Save Change & Reboot

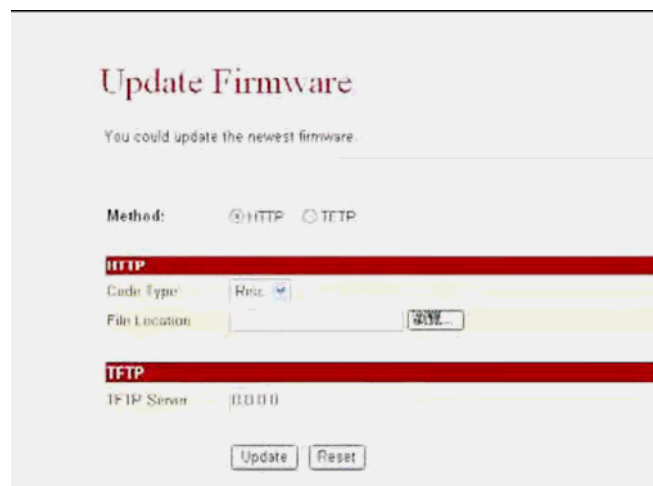
In Save Change you can save the changes you have done. If you want to use new setting in the **ATS-J2200X**, you have to click the Save button. After you click the Save button, the **ATS-J2200X** will automatically restart and the new setting will effect.

Update

You can update the **ATS-J2200X**'s firmware to the new one or do factory reset to let the **ATS-J2200X** back to default setting.

In New Firmware function you can update new firmware via HTTP in this page. You can upgrade the firmware by the following steps:

- Select the firmware code type, **Risc** code.
- Click the “Browse” button in the right side of the File Location or you can type the correct path and the filename in File Location blank.
- Select the correct file you want to download to the **ATS-J2200X** then click the Update button.



Update Firmware

You could update the newest firmware.

Method: HTTP TFTP

HTTP

Code Type: Risc

File Location:

TFTP

TFTP Server: 0.0.0.0

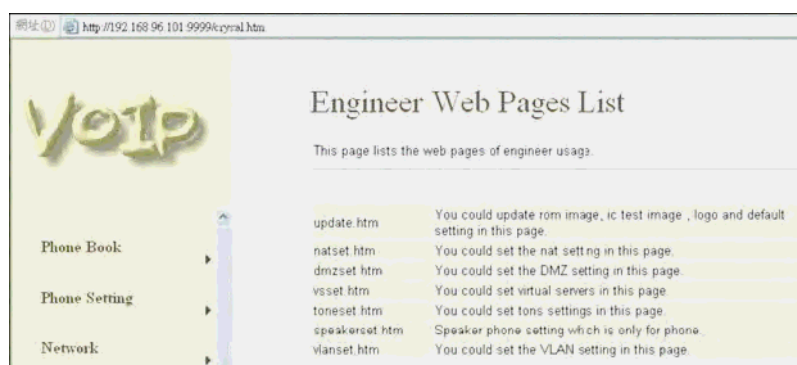
In Default Setting you can restore the **ATS-J2200X** to factory default in this page. You can just click the Restore button, and then the **ATS-J2200X** will restore to default and automatically restart again.



Engineering webpage

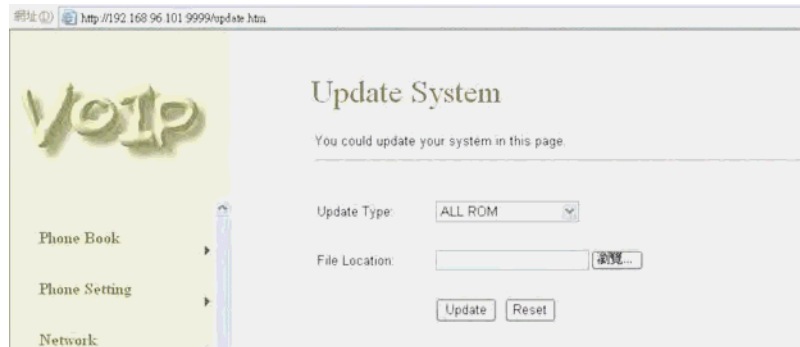
Engineer usage webpage list

You have to login the system first then change the webpage to crystal.htm manually. In this webpage you will see the list about engineer webpage. You can change the webpage to what you want.



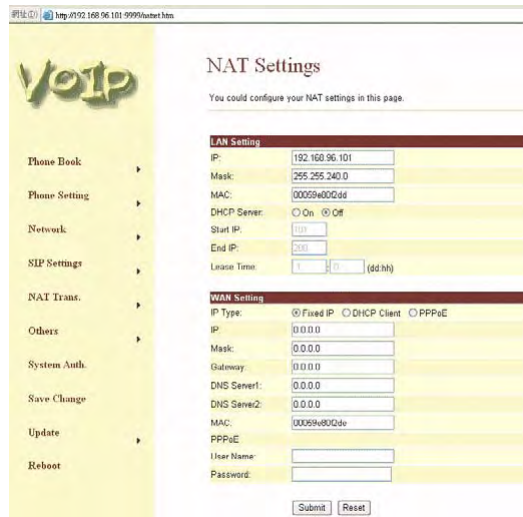
Update.htm

- .1.1 In this page you can update the system's ROM code, IC Test, Default setting and Logo.
- .1.2 Update ROM code. You can update the ROM code from this function. Please be noted that if you update the wrong file or during the update process the power is off, the system will be crashed.
- .1.3 Update Logo. The Logo specification is 220x170 jpeg file.



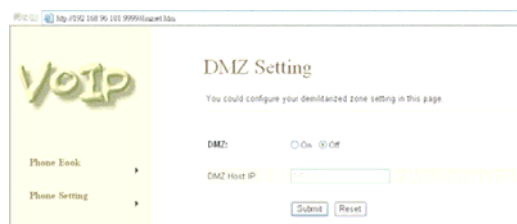
Natset.htm

- .1.4 In this page you can setup the NAT function. The WAN setting is for you to set how the get the IP address for the device. The LAN setting is for the other devices to get the IP address from the device. You can choose to use DHCP server or not.



Dmzset.htm

- .1.5 In this page you can setup the DMZ function. You need to enable / disable this function and set the IP address for DMZ.



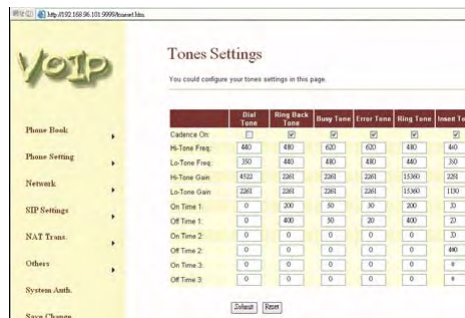
Vsset.htm

In this page you can setup the Virtues Server function.



Toneset.htm

In this page you can setup the Tone frequency and cadence to meet the requirement.



Speakerset.htm

In this page you can setup the Speaker function. This function only support in IP Phone with speaker phone.



Vlanset.htm

In this page you can setup the VLAN function.

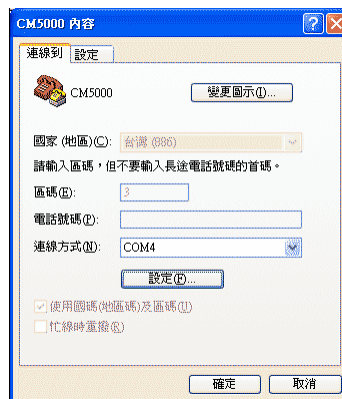


The screenshot shows a web browser window displaying the 'VLAN Settings' page. On the left is a navigation menu with categories: Phone Book, Phone Setting, Network, SIP Settings, NAT Settings, Others, and System Auth. The main content area is titled 'VLAN Settings' and includes a sub-header 'Receive VLAN Packets Setting' with a 'Receive VLAN Filter' checkbox (checked) and a 'Transmitted VNI' dropdown menu set to '0'. Below this is the 'Receive VLAN Packets Setting' section, which includes a 'Receive VLAN Filter' checkbox (checked), a 'VLAN Match' checkbox (unchecked), and a 'Hash Match' checkbox (unchecked). There are four rows for VNI configuration: VNI1, VNI2, VNI3, and VNI4, each with a dropdown menu set to '0'. A 'Hash Table' dropdown menu is set to '0'. At the bottom of the form are 'Submit' and 'Reset' buttons.

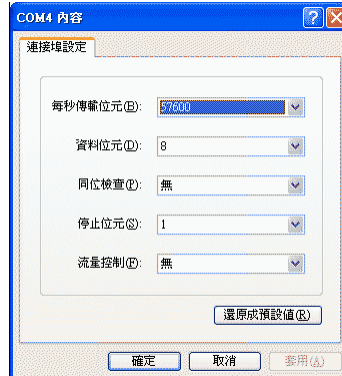
Setup the ATS-J2200X by using Console (Hyper Terminal)

Configure the COM port

First Open the hyper terminal window, select the connection by the COM port, then click the “Setting” button.

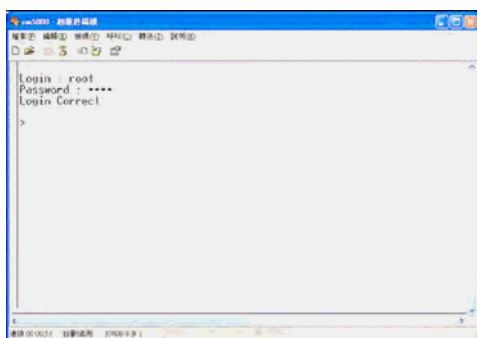


Set the COM port's setting as following setting. Then click OK.



Login into the ATS-J2200X

After finished the setting, click the “Connect” button (looks like a telephone icon). Then the hyper terminal is ready to connect to the ATS-J2200X. Press “Enter” and the hyper terminal will show the “Login: “. Input “root” and press the “Enter” button. Then hyper terminal will show the “Password: “. Input “test” and press the “Enter” button. Now you already login the ATS-J2200X. Please follow the CLI command list to configure the ATA-1000 with proper instruction and value.



Using CLI command to configure the ATS-J2200X

CLI command list as below:

ltno	Command	Description
1	?	Show CLI Command
2	arp	ARP Configuration
3	ipconfig	Interface Configuration
4	save	Save to flash
5	reboot	Reboot
6	exit	Exit
7	debugmode	Enter Debug Mode
8	update	Update Flash Code/RAM
9	auth	Change User Name and Password
10	nat	NAT Configuration
11	dns	DNS Configuration
12	ping	ping [-IN] [IP-addr host-name]
13	sip	SIP Configuration
14	ddns	DDNS Configuration
15	sntp	SNTP Configuration
16	vlan	VLAN Configuration
17	time	Get System Time
18	mactab	Show MAC Learning Table
19	dump	Read/Write Memory
20	book	Edit phone book
21	reload	Reload Factory Setting
22	watchdog	WatchDog Function
23	phone	Phone Setting
24	weblogo	Change Web's logo
25	dsp	Show dsp type
26	addport	Add Nat Port Mapping
27	cid	Select slic Cid
28	slic	read or write slic registers
29	ver	Firmware Version

“?” function is to show CLI command list in the screen.

arp function

ltno	Command	Description
------	---------	-------------

1	?	Show 'arp' Option
2	-a	Show ARP Table
3	-d	Delete ARP Table
4	-s	Set Static ARP Table
5	(null)	Show ARP Table

ipconfig function

Itno	Command	Description
1	?	Show 'ipconfig' Option
2	-if0	Interface 0
3	-if1	Interface 1
4	-if2	Interface 2
5	-h	Set Host Name
6	-a	Set ARP Cache Expire
7	-r	Restore Current Setting
8	(null)	Show IP Setting

ipconfig -ifN function → N is 0, 1, 2

Itno	Command	Description
1	?	Show 'ipconfig -ifN' Option
2	-t	Set Host Type
3	-m	Set MAC Address
4	-i	Set IP Address
5	-nm	Set Net Mask
6	-g	Set Gateway
7	-dns0	Set Primary DNS server
8	-dns1	Set Secondary DNS server
9	-dr	Set Default Route
10	-nat	Set NAT
11	on	Enable Interface
12	off	Disable Interface
13	-dhcps	DHCP Server Setting
14	-ddns	Set DDNS
15	-bridge	Set Bridge
16	-dev0	Set Device 0 Setting
17	-dev1	Set Device 1 Setting
18	-dev2	Set Device 2 Setting

19	(null)	Show Interface Setting
----	--------	------------------------

save function

Itno	Command	Description
1	?	Show 'save' Option
2	-book	Save phone book
3	-sys	Save system setting

reboot function is to restart the system

exit function is to exit the CLI

debugmode function is to enter the debugmode

update function

Itno	Command	Description
1	?	Show 'update' Option
2	-os	Update OSImage (IP filename)
3	-dsp	Update DSP Image (IP filename)
4	-all	Update All Image (IP filename)
5	-server	Update Server (IP filename length)
6	-pcm	PCM (IP filename)
	-alaw	alaw (IP filename)
	-ulaw	ulaw (IP filename)
	-g729	g729 (IP filename)
	-g723	g723 (IP filename)
	-g726.16	g726.16 (IP filename)
	-g726.24	g726.24 (IP filename)

IP is the TFTP server's IP address, and the filename is the image you want to download into the system.

auth function

Itno	Command	Description
1	?	Show 'auth' Option
2	-admin	Change Administrator user name / password
3	-sys0	Change System user0 user name / password
4	-sys1	Change System user1 user name / password
5	-sys2	Change System user2 user name / password

6	-sys3	Change System user3 user name / password
7	-sys4	Change System user4 user name / password
8	-norm0	Change Normal user0 user name / password
9	-norm1	Change Normal user1 user name / password
10	-norm2	Change Normal user2 user name/password
11	-norm3	Change Normal user3 user name / password
12	-norm4	Change Normal user4 user name/password
13	-ppp	Change PPP user name / password
14	(null)	Show auth Setting

In each item includes

Itno	Command	Description
1	?	Show 'auth' Option
2	-user	Change User Name. 'auth -sys3 -user xxx'
3	-pass	Change Password. 'auth -sys3 -pass xxx xxx'

If you want to change the password, you need to type the password twice in the CLI.

nat function

Itno	Command	Description
1	?	Show 'nat' Option
2	-vs	Set 'nat -vs' Option
3	-dmz	Set 'nat -dmz' Option
4	(null)	Show NAT Setting

In DMZ item includes

Itno	Command	Description
1	?	Show 'nat-dmz' Option
2	on	Enable DMZ
3	off	Enable DMZ

4	-ip	Set DMZ IP address
5	(null)	Show DMZ Setting

dns function

Itno	Command	Description
1	?	Show 'dns' Option
2	-q	DNS query. dns -q domain-name
3	(null)	Show DNS Table

ping function

Itno	Command	Description
1	?	Show 'ping' Option
2	-l	ping [-l N] [IP-addr host-name]
3	(null)	ping [IP-addr host-name]

sip function

Itno	Command	Description
1	?	Show 'sip' Option
2	-proxy0	sip -proxy0
3	-proxy1	sip -proxy1
4	-proxy2	sip -proxy2
5	-upnp	sip -upnp on/off/show
6	-exts	sip -exts sip upnp external-port
7	-extr	sip -extr rtp upnp external-port
8	-sipp	sip udp port
9	-rtpp	sip rtp port
10	-stun	sip -stun on/off
11	-rport	sip -rport on/off
12	-sserver	sip -sserver stun-server
13	-out	sip -out outbound-proxy
14	-dump	sip -dump
15	-log	sip -log on/off
16	-drtp	sip -drtp 0/1/2
17	-rtpnc	sip -rtpnc on/off
18	-wanip	sip -wanip
19	-nattype	sip -nattype
20	-hbyrfe	sip -hbyrfe
21	-dereg	sip -dereg

22	-restart	sip -restart
23	-jbt	sip -jitter buffer Threshold
24	(null)	Show SIP Setting

ddns function

Itno	Command	Description
1	?	Show 'ddns' Option
2	-type	Set DDNS Type
3	-host	Set Host Name
4	-wild	Set Wild Card Mode
5	-mx	Set Mail Exchanger
6	-backmx	Set Mail Exchanger Mode
7	-offline	Set Offline Mode
8	-user	Set Login User Name
9	-pass	Set Login Password
10	(null)	Show DDNS Setting

sntp function

Itno	Command	Description
1	?	Show 'sntp' Option
2	-on	Enable SNTP Client
3	-off	Disable SNTP Client
4	-ip1	Set SNTP Server1 IP
5	-ip2	Set SNTP Server2 IP
6	-mode	Set SNTP Client Mode
7	-zone	Set GMT Time Zone: [+/-][hour]:[min]
8	-adjust	Set Adjustment Time: [second]
9	(null)	Show SNTP Setting

vlan function

Itno	Command	Description
1	?	Show 'vlan' Option
2	-tx	Tx Vlan setting
3	-rx	Rx Vlan setting
4	(null)	Show Vlan Setting

time function

ltno	Command	Description
1	?	Show 'Time' Option
2	-t	Modify Time: hour:min:sec
3	-d	Modify date: year:mon:date
4	(null)	Show Data & Time

mactab function is to show MAC learning table.

dump function

ltno	Command	Description
1	?	Show 'dump' Option
2	-r	dump -r XXXXxxxxx
3	-w	dump -w XXXXxxxxx XX

book function

ltno	Command	Description
1	?	Show 'book' Option
2	-a	Show answer list
3	-c	Show call list
4	-s	speed dial
5	-p	phone book

reload function is to Reload Factory Setting, please make sure you want to do the factory reset.

watchdog function

ltno	Command	Description
1	?	Show 'WatchDog' Option
2	on	Enable WatchDog
3	off	Disable WatchDog
4	(null)	Show WatchDog Setting

phone function

ltno	Command	Description
1	?	Show 'phone' Option
2	-autoanswer	phone auto answer
3	-vol	Volume setting
4	-block	Block Incoming call
5	-ring	Set Melody Ringer
6	-forward	Auto-forward Incall to Phone[0-9]

		in Book
7	(null)	Show Phone Setting

weblogo function

ltno	Command	Description
1	?	Show 'weblogo' Option
2	-on	Vender Logo
3	-off	Crystal media Logo
4	(null)	Show weblogo Setting

dsp function is to show dsp code type.

addport function is to add Nat Port Mapping

cid function

ltno	Command	Description
1	?	Show 'cid' Option
2	-off	Disable Slic Cid signal
3	-1	Tx FSK after 1st Ring
4	-2	Tx FSK before 1st Ring
5	-3	Tx DTMF before 1st Ring
6	-4	Tx FSK with Line reversal before 1st Ring
7	-5	Tx DTMF with Line reversal before 1st Ring
8	-time	FSK cid with time message
9	-single	Single type FSK CID
10	(null)	Show Cid Option

slic function

ltno	Command	Description
1	?	Show 'slic' Option
2	-ring	Issue Ring signal
3	-r	read slic addr
4	-w	write slic addr
5	-a	read all slic reg
6	(null)	Show slic register

ver function is to show Firmware Version

How to make a phone call

When your ATS-J2200X is configured properly, you can make a phone call to your friend in the same Service provider.

If you want to make a phone call, you can dial the phone number and press “#” button to start to dial the phone number.

The ATS-J2200X also provides some functions that list as below:

1. Call Waiting: When a new call is coming while you are talking, you can push the Flash button to switch to the new call. You can push the Flash button to switch between the two calls.
2. Call Hold: You can push the Hold key to hold the current call for a while, then push Hold key again to keep talking.
3. 3-way conference: If you want to make a 3-way conference call, you can make a phone call to the first phone number. After the call is established, push the Flash button then you can hear the Dial tone, then make a phone call to the second phone number. When the second call is established, press the Flash button again.

Get a FWD account

1. The website is <http://www.freeworlddialup.com>; you can apply an account to use the VoIP communication. You can follow the instruction to input the information. After you finished, you will receive a mail sent by the FWD mail system, you will get the account information in the mail.
2. When you got the account, you can setup the related information into the ATS-J2200X.
3. You can setup the related information into the ATS-J2200X by web browser. Also you can use Telnet, Console via CLI command to configure the ATS-J2200X. You need to input the Proxy Name, Domain Name, Register Name, and password. The Display Name you can input what you want to let others see.
4. After you registered to the SIP Server, you can try to call your friends who also registered in the same SIP Server. You just need to dial your friend's user name (registered name) and press “#” then you can make a phone call to your friend.

If you want to make a phone call to the other in the internet, first you need to registered in a Proxy Server (with SIP Server IP, Domain IP, registered name, Password), make sure you already enable Stun function, then you can try.



FEDERAL COMMUNICATIONS COMMISSION INTERFERENCE STATEMENT

This equipment has been tested and found to comply with the limits for a Class B digital device, pursuant to Part 15 of the FCC Rules. These limits are designed to provide reasonable protection against harmful interference in a residential installation. This equipment generates, uses and can radiate radio frequency energy and, if not installed and used in accordance with the instructions, may cause harmful interference to radio communications. However, there is no guarantee that interference will not occur in a particular installation. If this equipment does cause harmful interference to radio or television reception, which can be determined by turning the equipment off and on, the user is encouraged to try to correct the interference by one or more of the following measures:

- Reorient or relocate the receiving antenna.
- Increase the separation between the equipment and receiver.
- Connect the equipment into an outlet on a circuit different from that to which the receiver is connected.
- Consult the dealer or an experienced radio/TV technician for help.

CAUTION:

Any changes or modifications not expressly approved by the party responsible for compliance could void the user's authority to operate the equipment.