

1 - COVER

2 - CC2431, IRDA, FLASH

3 - PWR SUPPLIES, SWITCH I/O

4 - CHARGER & GAS GAUGE

5 - OLED CONNECTOR, BUZZ, VIBE DRIVE

Sht03_Power
Sht03_Power.Sch

Sht04_Battery_Interface
Sht04_Battery_Interface.Sch

Sht02_CC2431
Sht02_CC2431.Sch

Sht05_OLED_Interface
Sht05_OLED_Interface.Sch

Title

HUBLITE MAIN BOARD

Size
B

Number

COVER

Revision

V2

Date:

13-Feb-2009

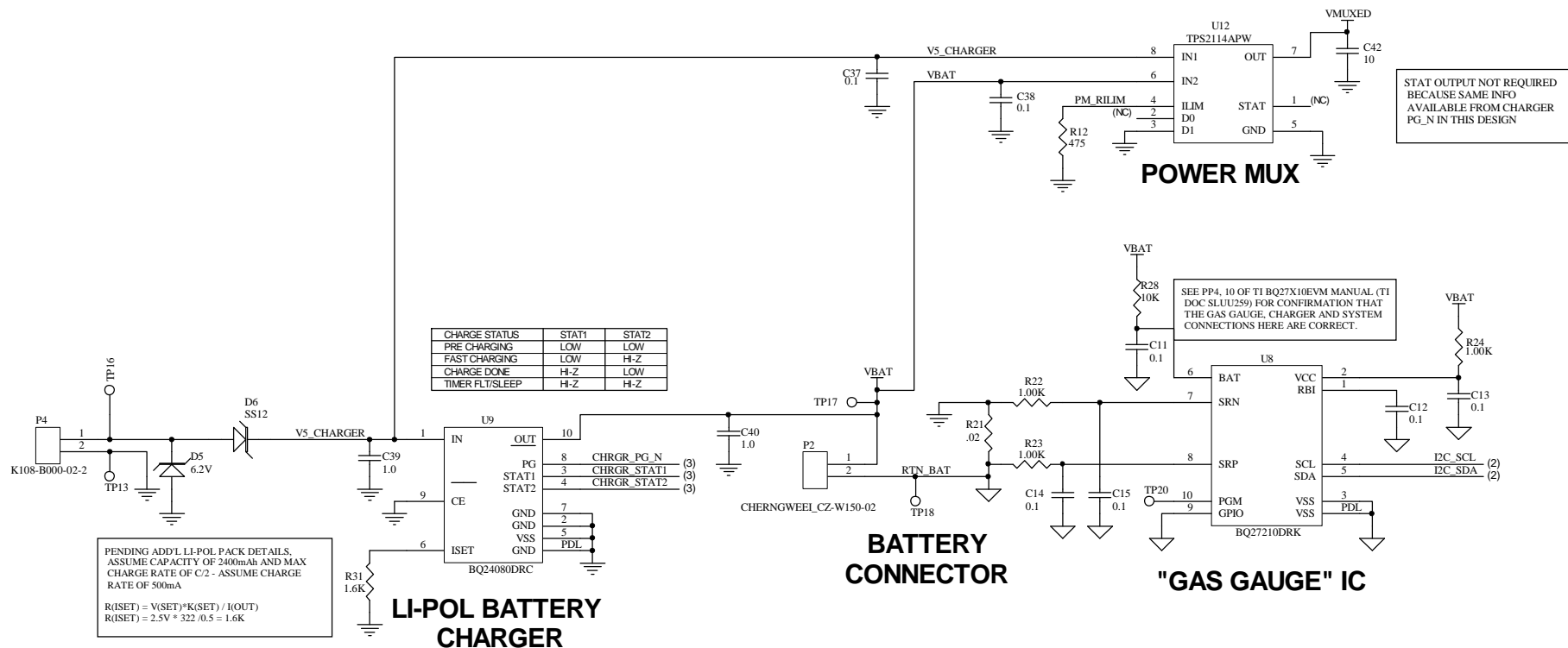
Sheet of

1

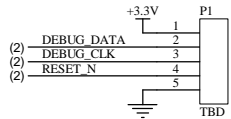
File:

D:\Workshop\ESP3rd Research\HUB Lite\Design\B3.0\hubliteV2.0.ddb

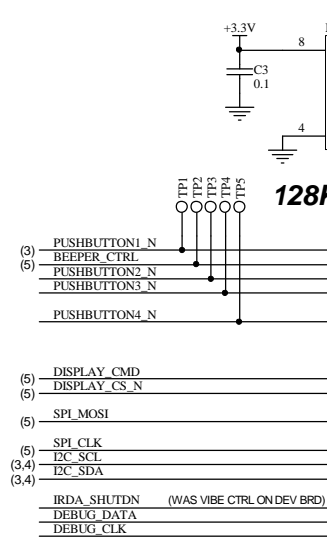
BATTERY CHARGER, GAS GAUGE & POWER MUXING



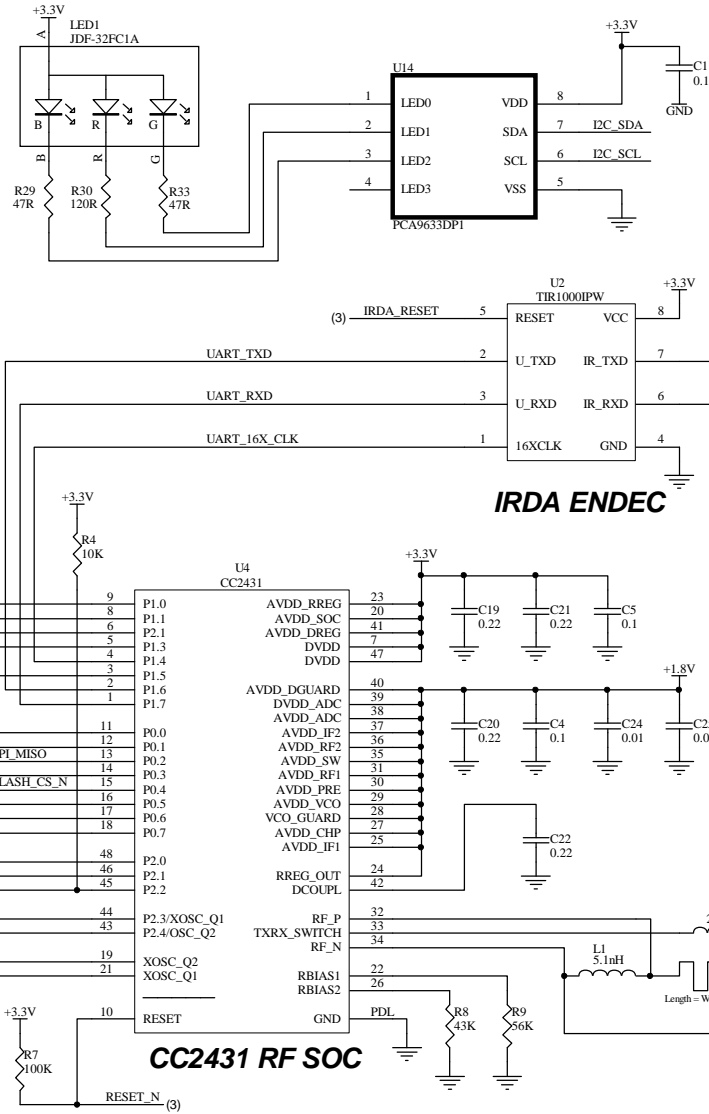
DNP IN PRODUCTION BUT NEED TO PUT A SMALL BUT SOFTWARE DEVELOPMENT FRIENDLY HEADER FOOTPRINT ON THE BOARD. POSSIBLY A SMT FOOTPRINT THAT COULD ALSO BE BED OF NAILS FRIENDLY FOR PRODUCTION PROGRAMMING.



CC2431 PGM & DEBUG CONNECTIONS



128KB SPI FLASH



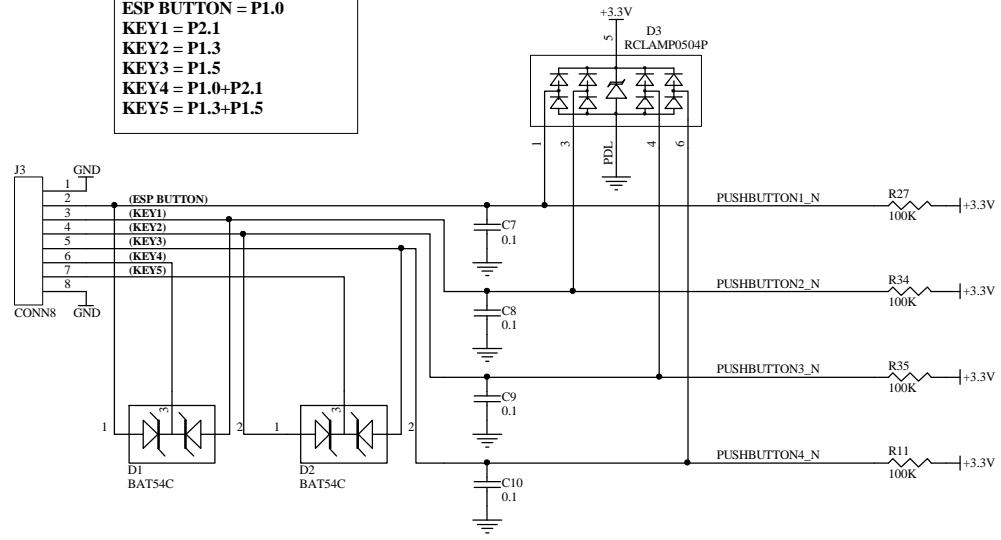
CC2431 RF SOC

IRDA ENDEC

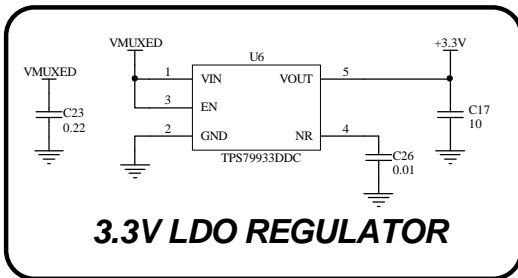
CC2431, IRDA & FLASH

Title			
HUBLITE MAIN BOARD			
Size	Number	Revision	
B	CC2431	V2	
Date:	13-Feb-2009	Sheet of	3
File:	D:\Workshop\ESP3rd Research\HUB Lite\Design\B0\hubliteV2.0.ddb		

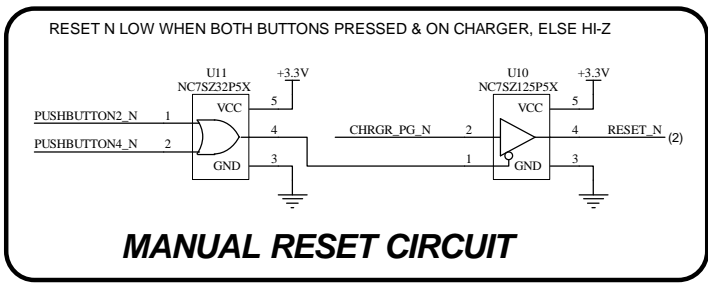
ESP BUTTON = P1.0
KEY1 = P2.1
KEY2 = P1.3
KEY3 = P1.5
KEY4 = P1.0+P2.1
KEY5 = P1.3+P1.5



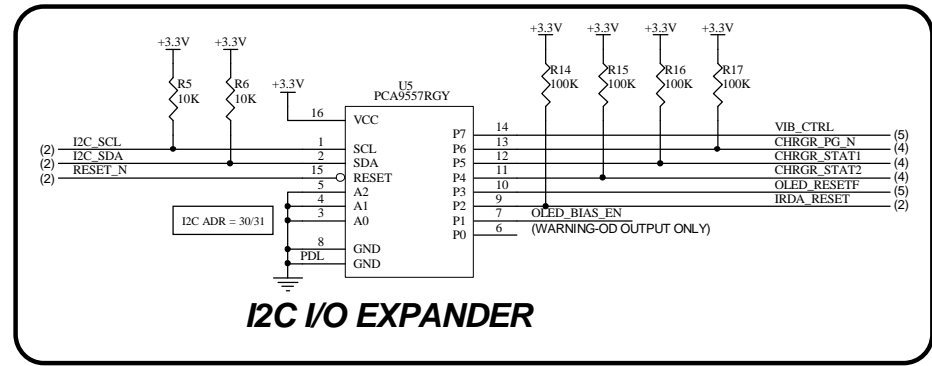
BUTTON FPC CONNECTIONS



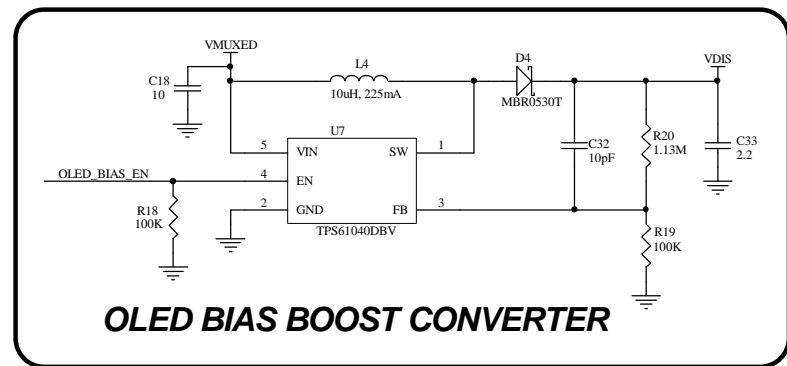
3.3V LDO REGULATOR



MANUAL RESET CIRCUIT



I2C I/O EXPANDER



OLED BIAS BOOST CONVERTER

3.3V LDO, OLED BIAS SUPPLY AND SWITCH CONNECTORS

Title			
HUBLITE MAIN BOARD			
Size	Number	Revision	
B		POWER	
Date:	13-Feb-2009	Sheet of	
File:	D:\Workshop\ESP3rd Research\HUB Lite\Design\BOM\hubliteV2.0.ddb	V2	

