

T07 802.11b_Ch11_Top Side_0cm

DUT: SCAN;

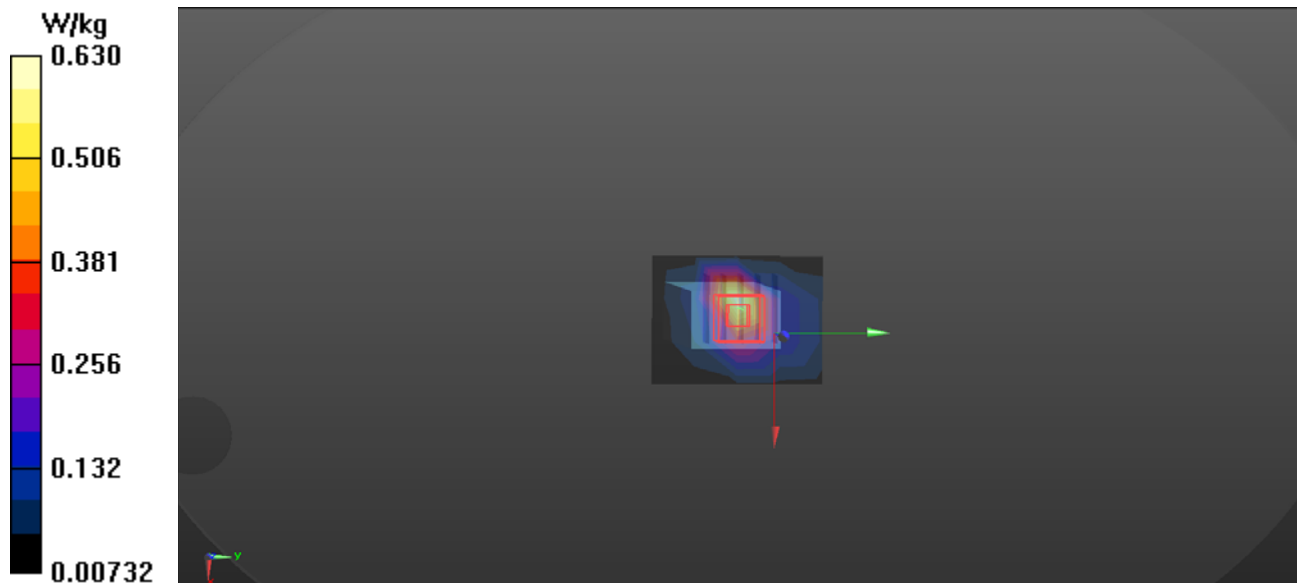
Communication System: UID 0, WiFi (0); Frequency: 2462 MHz; Duty Cycle: 1:1
Medium parameters used: $f = 2462$ MHz; $\sigma = 2.007$ S/m; $\epsilon_r = 51.496$; $\rho = 1000$ kg/m³
Ambient Temperature : 23.2 °C; Liquid Temperature : 22.5 °C

DASY Configuration:

- Probe: EX3DV4 - SN7369; ConvF(7.65, 7.65, 7.65); Calibrated: 2017/8/24;
- Sensor-Surface: 2mm (Mechanical Surface Detection), $z = -9.0, 31.0$
- Electronics: DAE4 Sn1486; Calibrated: 2017/8/17
- Phantom: ELI V5.0 (20deg probe tilt); Type: QD OVA 002 AA; Serial: 1240
- DASY52 52.8.8(1258); SEMCAD X 14.6.10(7373)

Area Scan (6x7x1): Measurement grid: $dx=12$ mm, $dy=12$ mm
Maximum value of SAR (measured) = 0.630 W/kg

Zoom Scan (5x5x7)/Cube 0: Measurement grid: $dx=8$ mm, $dy=8$ mm, $dz=5$ mm
Reference Value = 28.89 V/m; Power Drift = 0.01 dB
Peak SAR (extrapolated) = 2.25 W/kg
SAR(1 g) = 0.932 W/kg; SAR(10 g) = 0.348 W/kg
Maximum value of SAR (measured) = 1.41 W/kg



T13 802.11n_HT20_Ch6_Top Side_0cm

DUT: SCAN;

Communication System: UID 0, WiFi (0); Frequency: 2437 MHz; Duty Cycle: 1:1
Medium parameters used: $f = 2437$ MHz; $\sigma = 1.972$ S/m; $\epsilon_r = 51.583$; $\rho = 1000$ kg/m³
Ambient Temperature : 23.2 °C; Liquid Temperature : 22.5 °C

DASY Configuration:

- Probe: EX3DV4 - SN7369; ConvF(7.65, 7.65, 7.65); Calibrated: 2017/8/24;
- Sensor-Surface: 2mm (Mechanical Surface Detection), $z = -9.0, 31.0$
- Electronics: DAE4 Sn1486; Calibrated: 2017/8/17
- Phantom: ELI V5.0 (20deg probe tilt); Type: QD OVA 002 AA; Serial: 1240
- DASY52 52.8.8(1258); SEMCAD X 14.6.10(7373)

Area Scan (6x7x1): Measurement grid: $dx=12$ mm, $dy=12$ mm
Maximum value of SAR (measured) = 0.411 W/kg

Zoom Scan (5x5x7)/Cube 0: Measurement grid: $dx=8$ mm, $dy=8$ mm, $dz=5$ mm
Reference Value = 23.46 V/m; Power Drift = -0.16 dB
Peak SAR (extrapolated) = 1.39 W/kg
SAR(1 g) = 0.585 W/kg; SAR(10 g) = 0.219 W/kg
Maximum value of SAR (measured) = 0.902 W/kg

