

## Information

- Do not violate or infringe the copyright law and other international copyright laws while using this player for recording.
- The copyright law forbids unauthorized reproduction of copyrighted music for any other purpose other than self-entertainment without the author's permission.
- For the purpose of self-entertainment, it is strictly prohibited to compile and disseminate copyrighted music to a third party without the author's permission.
- If copyrighted music is intentionally disseminated by means of information network without the author's permission, the infringer will violate "the right of communications to the public" and "the right of distribution" and shall be subject to the criminal charges.
- The Company, and the manufacturers, distributors and dealers of this player are not liable for any of the above infringement acts.
- The Company shall not be liable for any loss or damage (whether anticipated or unanticipated losses) of customers or other third parties due to the usage of the player.
- Before introducing or using the player, please back-up all essential information stored in PCs. The Company shall not be liable for any loss or damage due to the usage of the player.

## Safety Rules

- Please follow the rules depicted in this manual closely to ensure your safety. Before using the player, we would strongly encourage you to read through this user manual
- Be more wary of any edges, uneven surfaces, metal parts, accessories and its packaging so as to prevent any possible injury or damage.
- Keep this player out of reach of children. Take note that this player is not edible and should not be placed in your mouth.
- Do not modify, repair or dismantle the player. Doing so may result in fires, electric shocks, complete breakdown of the player, etc. All of which, are not covered under warranty.
- Do not use any diluents or volatile liquid to clean the player. Keep in mind that the surface of the player should only be wiped with a dry cloth.
- Do not use this player in locations whereby there are high-temperatures or high humidity levels (For instance, bathrooms); ideally, the player should be used in a location free of dust and exposure to direct sunlight.
- Do not insert foreign objects, such as pins, into this player.
- Do not touch this player when your hands are wet as this may result in electric shocks.
- Be extremely cautious while using headphone/earphones as they may strangle the user when entangled.

- Turn down the volume before/while using this player as sudden loud sounds may damage your ear drums.
- Refrain from dropping the player as well as any collision with other objects.
- When plugging in/out the headphone/earphones or wires please hold the player and jacks firmly to prevent the wires from breaking and the player from dropping.
- If using the player while walking, do pay attention to the traffic situations and road conditions.
- Do not use this player when in hazardous locations.
- Should any abnormal situations or problems occur while using the player, discontinue use of player immediately.



### Disposal



Do not dispose of a defective MP3 player in normal household waste disposal containers (internal battery). Take the defective device to your retailer or to an appropriate waste collection site. This will ensure that the device is disposed of in an environmentally-friendly way.

# Connecting to a PC

## Operation Procedures

- 1) Use the USB cable provided to connect to computer and it will be recognized as a USB Mass Storage Class and it can be found in "My Computer."
- 2) The files stored on the player can be managed through Windows File Explorer or "My Computer" to copy chosen music files or data to the player. You could delete the files in the player through your operating system as well.
- 3) Once all procedures have been completed, please follow the steps below to remove the player to avoid causing damage to your files.

## Removing hardware

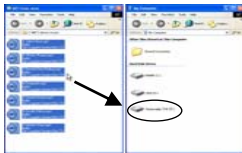
- 1) Double-click using the left button of your mouse on the icon that says “safely remove hardware”, as can be seen from the image below. This icon is located at the lower right hand corner of your computer screen.



- 2) When the icon appears, click the “Stop” button to remove the hardware safely. The player may then be detached from the USB Cable.

## Copying music files to the player

1. Please refer to the previous section -“Connecting to a PC” to connect a PC to the player using a USB cable or a USB adapter.
2. If the connection is successful, a removable drive icon (F:\) will appear in “My Computer.”
3. First, locate your favorite MP3 or WMA music files in “My Computer.” Secondly, select specific music files and click on those files with the right button of the mouse and select “Copy.” Next, locate the Removable Drive (F:\) in “My Computer”. After doing so, right click on the mouse to “Paste” the selected files to F:\. . Another way is to hold the left button of the mouse on the files you wish to copy, and drag the files to the Removable Drive. To finish the copying process, release the button of your mouse.



4. After the file copy process has been completed, please refer to the steps as mentioned in previous page so as to remove the player safely.

## Features

- Supports MP3 and WMA music file.
- LED Indicator
- Plug-and-Play USB Flash Disk function.
- Normal or Random mode for music play.
- 
- USB2.0 Full speed

Supports Bluetooth Headset (HSP) and Hands-free (HFP) profile.

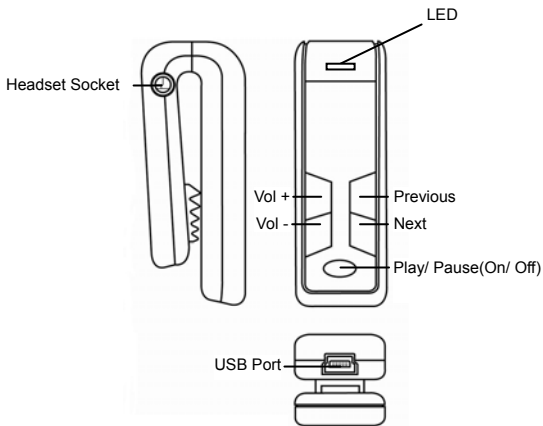
FCC Statement This device complies with Part 15 of the FCC Rules.

Operation is subject to the following two conditions:

- (1) this device may not cause harmful interference, and
- (2) this device must accept any interference received, including interference that may cause undesired operation.

Changes or modifications not expressly approved by the party responsible for compliance could void the user's authority to operate the equipment.

## External View of Product and Features





## Connection Diagram



**Inline Control:** Bluetooth Control Button

# Basic Function

## Switching the Bluetooth On

- Press and hold the **Bluetooth** button on the Earphone
- The Player takes about 5 sec to start up
- Once it has started, a “beep” sound will be played

## Switching the Bluetooth Off

Hold the **Bluetooth** button on the Earphone until you hear the shutdown “beep” sound played

## Switching the MP3 player On

- Press the **PLAY** button to switch on the player
- The player takes about 3 sec to start up, depending on the number of songs stored in it
- Once it has started, a welcome message will be played

## Switching the player Off

Hold the **PLAY** button until you hear the shutdown message.

**NOTE:** To shutdown both MP3 and Bluetooth while both are on, you will have to shutdown each of them separately.

## Resetting the player

For resetting the player, please use a stick or something that is able to press the **RESET** button which is at the end of the headphone jack. Press the **RESET** button **ONCE**.

**NOTE:** Only use this button when the player has totally hanged and is not able to function.

## Overview of Button Events vs. Corresponding Actions Bluetooth Mode

Buttons	Events	Actions
Bluetooth Button(on earphone)	Press	<ol style="list-style-type: none"> <li>1. Answer phone call when it is ringing mode</li> <li>2. Pair with and connect to the last paired mobile phone if it is not connected.</li> <li>3. Activate the voice dial function when it is at standby (connected)</li> </ol>
	Double click	<ol style="list-style-type: none"> <li>1. Exit pairing when it is in pairing mode</li> <li>2. Activate last number redial function when it is at standby (connected)</li> <li>3. Cancel call when it is dialing number</li> <li>4. Hang up an active call</li> <li>5. Reject incoming call</li> </ol>

	Hold (2 sec) when it is at Power Off State	<ol style="list-style-type: none"> <li>1. Bluetooth Power On and automatically pair and connect to the last paired mobile phone</li> <li>2. Continue holding for another 5 sec at startup to enter pairing (Note: This is the only way to enter pairing mode)</li> </ol>
	Hold (5 sec)	Power Off when it is at standby mode
UP	Press	Increase the Volume during active call
DOWN	Press	Decrease the Volume during active call

## MP3 Mode

Buttons	Events	Actions
PLAY	Press	<ol style="list-style-type: none"> <li>1. Power On when it is power off</li> <li>2. Play/Pause while playing (pause will be followed by battery level indication)</li> </ol>
	Double click	Trigger Keylock Function (Lock / Unlock)
	Hold (1 sec)	Change Play Mode (Normal ⇔ Random)
	Hold (5 sec)	Shut Down
PREV	Press	Previous song
	Hold	Rewind
NEXT	Press	Next song
	Hold	Fast Forward
UP	Press / Hold	Volume Up
DOWN	Press / Hold	Volume Down

## LED Indicator

Whenever Bluetooth is on, LED indication is as below.

State	LED status
Standby & Connected	Blue LED blinks once every 2 sec
Standby & Not connected	Blue LED blinks once every 1 sec
Starting Up	Blue LED light up
Shutting Down	Red LED light up until shutdown
Pairing Mode	Blue Red alternate
Incoming call	Blue LED blinks once every 500ms
Battery Low	Red LED blinks once every 2 sec

When only MP3 player mode is on

State	LED status
Normal	Blue LED blinks once every 5 sec
Battery Low	Red LED blinks once every 5 sec
Starting Up	Blue LED light up
Shutting Down	Red LED light up until shutdown
When connect to USB or charging with battery >30%	Blue LED blinks moderately
When connect to USB or charging with battery <30%	Red LED blinks moderately

# Operating in Music Mode

Once the player is turned on, press the **NEXT** or **PREV** button to search for the desired track.

Press the **PLAY** button to play the current track, press again to pause playing, follow by battery level indication.

## Normal playing operation

- Press the **NEXT** button to forward to the next song or hold the **NEXT** button to fast forward the current song.
- Press the **PREV** button to backtrack the previous the song or hold the **PREV** button to fast rewind the current sing.
- Press “**Vol +**” or “**Vol -**” to increase or decrease the volume of the music

## Change play mode

- Press and hold the **PLAY** button for about 1 sec then release
- You will hear the selected Play Mode, which is either “Normal Playback” or “Random Playback”

**NOTE:** Please refer to the “Button events vs. Corresponding Actions” table.

# Operating as a Bluetooth Headset

## Working with your Handphone

- ✓ When Bluetooth is at Off, hold the **Bluetooth** button for 2 sec to turn on the Bluetooth. Once it is on, there will be a “BEEP” and it will try to connect to the handphone that it was previously connected to.
- ✓ If you wish to enter pairing mode, continue holding for another 5 sec until there is a double “BEEP”.
- ✓ Once Enter Pairing, use your handphone to look for this Device (ODYS BT 100)
- ✓ Once it is found, select this device and key in the password: “0000”.
- ✓ Once has been paired successfully, depends on the handphone models, some will automatically connect and some will need manually connect using the handphone.
- ✓ Once connected, there will be a “BEEP”.
- ✓ Once disconnected, whether it is due to low signal or the user manually disconnect it using handphone, there will be a “BEEP” too.

Note: There will be 3 messages – “Enter Pairing”, “Device Connected” and “Device Disconnected” – to indicate the status if the MP3 Player is turned on.

## Operating as a USB Drive

- ✓ Shutdown the player first.
- ✓ Use the USB cable provided to connect to your computer
- ✓ The computer will recognize it as a USB Mass Storage Class and it can be found in "My Computer"

## Power Charge

- Connect to USB to charge the player.
- Charging time will be 2 hours.
- Do not charge the player for more than 12hours to prevent overcharge.

**NOTE:** Turn off the power when it is not in use.

## Product Specification

Music Format	mp3, wma
Capacity	2GB
USB type	USB2.0 interface
Compress rate	MP3: 8kbps~320kbps, WMA: 5Kbps~192kbps
SNR	≥90dB
Output Frequency	(L) 10mW+ (R) 10mW (32Ohm)
Battery	Lithium Rechargeable Battery 180mAh



# Trouble Shooting

## **There is no sound when playing.**

Check to find if the volume is adjusted too low. If it is too low, turn it up. Make sure that the earphones are properly connected, or they are working properly.

## **Sometimes abnormality occurs on the PC when disconnecting the player.**

This is mainly caused by unplugging during data transmission. It is advised to never disconnect the player while data and files are being transmitted between the player and your PC.

## **Why music files cannot be downloaded when linked to a PC?**

- Management driver not installed. Install again.
- Installed driver damaged. Install again.
- PC main board does not support USB connection. Upgrade the main board.

## **Why the player seems not working at all.**

The player might hang due to some unexpected operation. Just reset the player using the hidden reset button through the 3.5mm earphone jack.

## **Warranty condition            EN**

The following conditions comprise the requirements and scope of our warranty conditions and do not affect our legal and contractual warranty obligations.

### **We offer a warranty on our products in accordance with the following conditions:**

1.            Odys products are covered by a 24 month warranty.

We will resolve damages or defects on Odys products free of charge within 12 months of the purchase date under the following warranty conditions. For any damage or defect determined later than 12 months after the purchase date, proof of a manufacturing fault must be submitted for repair under warranty.

The warranty does not cover batteries and other parts, which are considered consumables, parts that break easily such as glass or plastic or defects based on normal wear and tear. There is no

warranty obligation in the event of marginal differences compared to the target appearance and workmanship provided these have a negligible effect on the product's fitness for use, in the event of damage caused by chemical or electrochemical effects, by water or generally from abnormal conditions.

2. The warranty will be performed in such a way that we shall decide whether to repair the defective parts or to replace them with working parts free of charge. AXDIA reserves the right to exchange the product for a replacement product of equal value if the product that is sent in cannot be repaired within a reasonable time or at reasonable cost. The product can also be exchanged for a different model of the same value. Requests cannot be made for repairs to be carried out on site. Parts that have been replaced or exchanged become our property.

3. The warranty claim does not apply if repairs or other

work is carried out by unauthorized persons or if our products are equipped with additional parts or accessories that are not approved for our products.

4. Warranties that have been activated do not cause the warranty period to be extended, nor do they trigger a new warranty period. The warranty period for any replacement parts installed ends with the warranty period for the entire product.

5. Any other or further claims are excluded, especially those for replacement due to damage caused outside of the product, provided there is no obligatory legal liability. We therefore accept no liability for accidental, indirect or other consequential damage of any kind, which leads to usage restrictions, data loss, loss of earnings or interruption to business.

### **Asserting a warranty claim**

1. To make use of the warranty service, you must contact

the AXDIA Service Center by e-mail, fax or phone (see below for contact details). You can also use the service form on our website or on the back of the warranty conditions.

2. AXDIA Service Center will try to diagnose and solve your problem. If it is determined that a warranty claim exists, you will be given an RMA number (Return Material Authorization) and you will be asked to send the product to AXDIA.

**IMPORTANT: AXDIA will only accept parcels that have an RMA number.**

Please observe the following when sending the product:

1. Send the product suitably packaged with carriage and insurance paid. Do not enclose any accessories with the products (no cables, CD's, memory cards, manuals, etc.), unless the AXDIA Service Centre specifies otherwise.
2. Mark the RMA number on the outside of the package

in such a way that it is visible and clearly legible.

3. You must enclose a copy of the sales slip as proof of purchase.

4. Once AXDIA has received the product, it will meet its warranty obligations in accordance with the warranty conditions and will return the product to the sender with carriage and insurance paid.

### **Service outside of warranty**

AXDIA can refuse any service claim made that is not covered by the warranty. If AXDIA agrees to provide a service outside the warranty, the customer will be invoiced for all repair and transport costs.

AXDIA will not accept any packages that have not first been approved by AXDIA by means of an RMA (Return Material Authorization).

**NOTE:** This equipment has been tested and found to comply with the limits for a Class B digital device, pursuant to Part 15 of the FCC Rules. These limits are designed to provide reasonable protection against harmful interference in a residential installation. This equipment generates uses and can radiate radio frequency energy and, if not installed and used in accordance with the instructions, may cause harmful interference to radio communications. However, there is no guarantee that interference will not occur in a particular installation. If this equipment does cause harmful interference to radio or television reception, which can be determined by turning the equipment off and on, the user is encouraged to try to correct the interference by one or more of the following measures:

- Reorient or relocate the receiving antenna.
- Increase the separation between the equipment and receiver.
- Connect the equipment into an outlet on a circuit different from that to which the receiver is connected.
- Consult the dealer or an experienced radio/TV technician for help.