

InkCase + User Manual

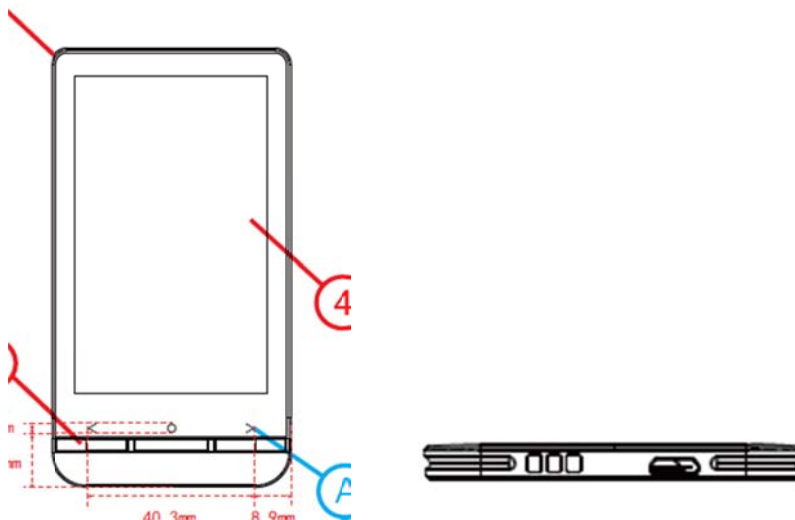
Product Summary:

InkCase+ is a multifunction E-ink smart device with a 3.5-inch ePaper display. It can display any pictures you like, including weather information, ebooks, two-dimensioncode and reminders etc., by installing InCase Apps and wireless receiving the transferred data from mobile phone. For its module design, you can use it as a smartphone case or a separate display panel.

How to Connect

Connect the InkCase+ with the Smartphone via Bluetooth, use the apps send data to InkCase+.

Button Layout & Function



Center Button: **Press and hold for 5 seconds** -On/ Off, **Press and hold for 10 seconds** -reset,

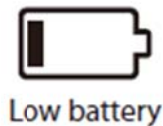
Double press- Switch Mode

Left Button: Flip left page

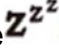

Right Button, Flip right page

Charging the InkCase+

- You need to charge the device prior to use it for the first time or when battery power is low.
- Charge the device using AC adapter with output 5V, 1A.
- Charging through PC may not be able to fully charge the device due to the low output charging current from PC USB port.
- Please turn the device to standby mode to shorten the charging process.
- It will take about 2 hours to fully charge the device in standby mode (LCD off).
- The battery status is displayed at the lower right corner. The status is shown as below:



Power On and Off the InkCase+

- Press and hold the **Power** button for 3 seconds to turn on InkCase+.
- It may take a few moments for the unit to turn on and load the content.
- If InkCase+ does not turn on, charging is required.
- Press the [Power] button briefly to enter into Standby / Wake up mode,
- in standby mode, the  icon will appear at the bottom of the screen..
- To turn off Inkcase+, press and hold the Power button for 3 seconds again, then the  icon will appear at the bottom of the screen.

Getting started

The operations of Inkcase+ is based on the Inkcase Companion.



InkCase Companion

InkCase Companion is more stability for your smartphone to connect Inkcase on Inkcase Companion via bluetooth.



InkCase Photo

InkCase Photo is a picture sharing app, you can share your pictures to InkCase as the second display of your smartphone.



EpiReader

EpiReader is an ebook reading application, it supports a variety of formats, and the page mode is more personalized.

Downloading InkCase Apps

Choose either of the following ways to download the inkcase apps:

1. Download InkCase App from InkCase website: www.inkcase.com/app
2. Scan the QR Code shown the right side:

When you have successfully downloaded the InkCase apps, please install

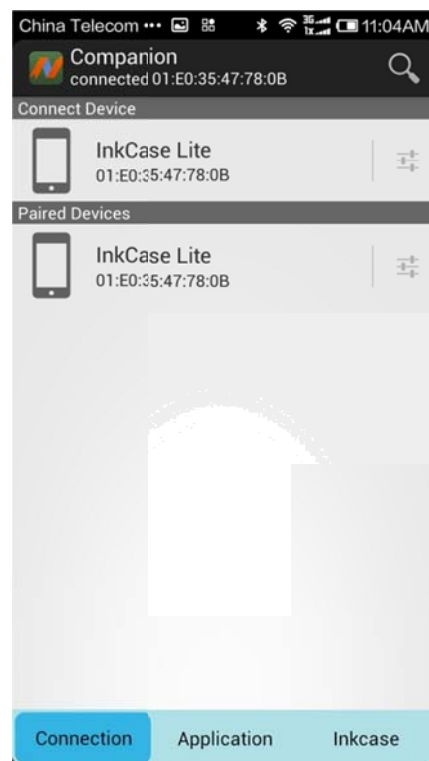


them into your smart phone.

Connect Bluetooth Via InkCase Companion

Tap to launch the **InkCase Companion**, tap **Scan for devices** to display available device, tap to choose the InkCase + device to pair with the smart phone.

When successfully connected, the connection information will be shown at the top screen.



- ① Search for Bluetooth device.
- ② InkCase is connected
- ③ Click here to change InkCase name

How to use InkCase Photo

Upon turning on the unit and connecting bluetooth successfully, choose one of the below ways to transfer photos via InkCase Photo.

Using the photo list of InkCase Photo

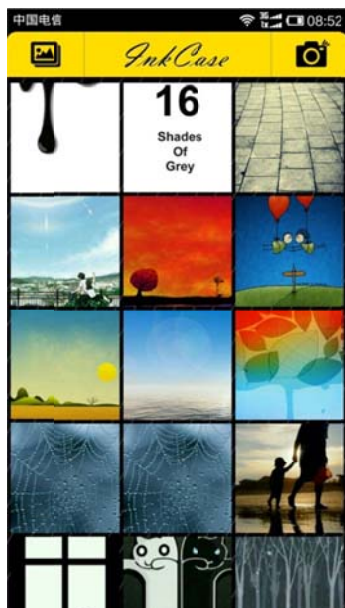
On your smart phone, tap InkCase Photo icon to enter into photo list, then follow the below steps to do:




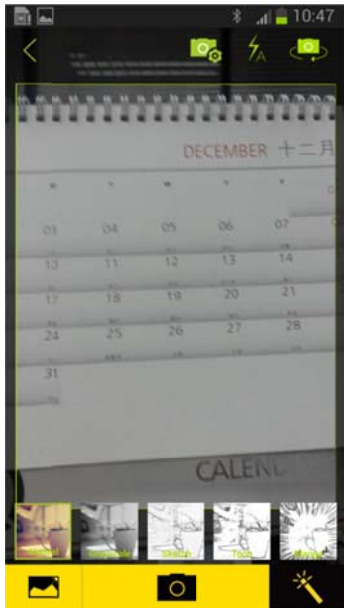
- ① Tap InkCase Photo icon to enter into photo list
- ② Flick left and right on the screen to go to another picture
- ③ tap a desired photo to be transferred.


Using the camera to take photos

On your smartphone, tap InkCase Photo icon, then follow the below steps to do.





- ① Tap Camera button  at the top right of the screen to start taking a photo.



- ② When you have taken a desired photo, tap  to edit the photo

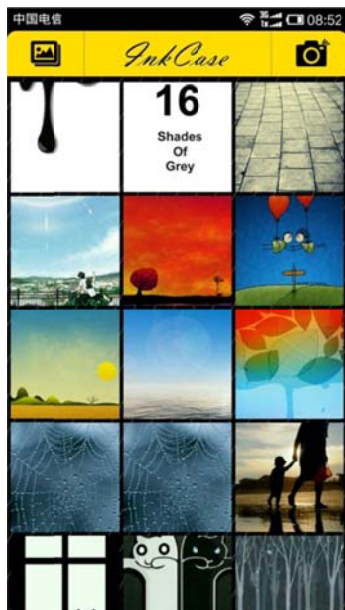



- ③ Move the the picture in the frame to clip it. Use your finger to pinch to Zoom in / out.
- ④ Edit the photo by tapping the onscreen buttons.

-  Rendering,
-  Rotate,
-  Add photo frame,
-  Add text

⑤ After the edition is completed, tap here to transfer the picture to InkCase+.

Using the photo list on the local disk of smartphone



① Tap  at the lower left of the screen to enter into photo list.



② Choose a picture from the local Gallery ,Swipe up and down on the screen to scroll through the photo list, tap to select a desired photo.





③ Tap Edit button to Edit the picture.



④ Move the the picture in the frame to clip it. Use your finger to pinch to Zoom in / out.

⑤ Edit the photo by tapping the onscreen buttons.

-  Rendering,
-  Rotate,
-  Add photo frame,
-  Add text

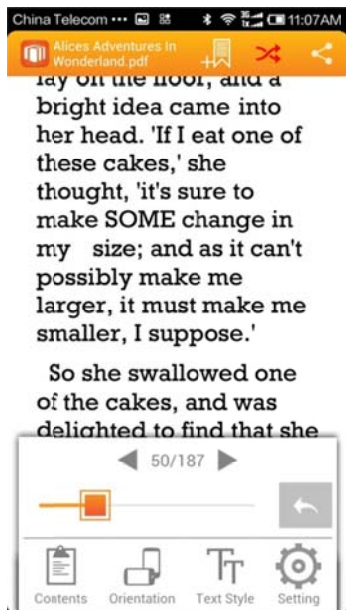
⑥ After the edition is completed, tap here to transfer the picture to InkCase+.

- ⑦ **Important note** : InkCase+ will hold 10 pictures, newest pictures will replace the oldest picture base on first in first out basis.

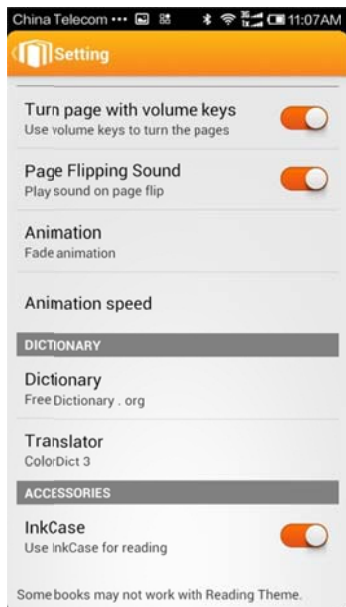
How to use InkCase EpiReader

Upon turning on the unit and connecting Bluetooth successfully, then follow the below steps to do.

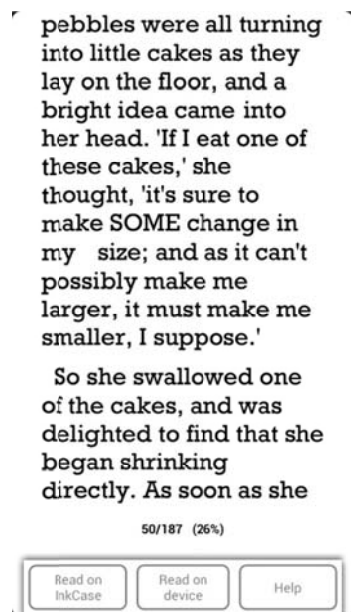
- ① On your smart phone, tap EpiReader icon to enter ebook library, then tap open a ebook for reading.



- ② Tap at the center of the reading page to display an option menu.
③ Tap Setting to enter reading setting.



- ④ Choose this item to use Inkcase for reading.



⑤ Tap this item to start reading on InkCase+ display screen. Then press Previous / Next button to turn to previous / next page.

Other Functions

(Below Functions Require Companion Apps to Connect to Bluetooth)

- Notification
When the phone receive new incoming call, SMS, WeChat & Facebook Notification, and selected alerts, and under the condition that InkCase+ was connected to the smartphone Bluetooth. InkCase+ will automatic display these messages, and does not need to on the smart phone to check.

Answering A Call

User can use the InkCase+ interface to answer the incoming call.



Music playback control mode

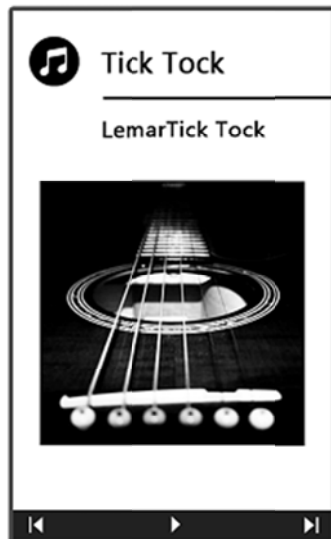
- ① When InkCase+ in other mode, Single Click the centerbutton, will call out Music Control Key, enter music/ Song playing mode include play/stop, forward, backward. If left idle for 5 seconds, the control will be sleep and return to the previous application mode.

阅读模式下听歌



Listen to song in Reading mode

- ② Double Click to enter switch application mode, select music playback control, use the button to control the playback.



For more applications for inkCase+, please visit www.inkcase.com/app

InkCase+ Parameter

Application	for Android Smartphone
Display	3.5" E-Ink
resolution	360*600
Battery	3.7V 400mAh
Bluetooth	Bluetooth 2.1
Working temperature	0℃-40℃
Function	Support eBook/Photo/Sports information/Notification
OS	Support Android App
Standby time	5days
Dimension	127.3 X 61.8 X 13.6 mm
Weight	50g
Weight with packaging	

FAQs

- Can not Connect to Bluetooth
 - ① Ensure Smartphone Bluetooth is on.
 - ② Connect inkcase bluetooth using inkCase Companion, search for inkCase+ connection
 - ③ If unsuccessful connection, please restart both Smartphone and inkCase+
- How to Add new book to Epi Reader

Please refer to How to Use Epi Reader at # ④ .
- Hang in sending progress, no response from InkCase or not able to off the inkCase.

Problem may cause from Error in sending via Bluetooth from the phone, off the Phone's Bluetooth, then Press & hold Inkcase middle for 3 seconds

4. Unable to locate InkCase 's Bluetooth

① Please ensure not using Phone's Bluetooth to search for InkCase, please use "InkCase Companion" to search for InkCase+ instead

② Search for InkCase+ Device using "InkCase Companion" to Connect

5. InkCase+ being charge for a long period of time, no changes in the Battery indicator.

InkCase's E Ink will not refresh the display, it will remain on it's current stage, please manually refresh the page to check the battery level.

6. The device shows that it has electricity, but no matter how to press buttons it has no response, and seems crashed.

InkCase's E Ink will not refresh the display, it will remain on it's current stage, please manually refresh the page to check the battery level. After the InkCase has depleted the battery , it will display the last shown display on the inkCase and it's last known Battery stage.

Please connect the inkCase+ with the Micro USB Cable to Charge the InkCase+

7. What Ebooks Format inkCase+ Supports ?

InkCase+ Currently supports TXT, PDF, EPUB, MOBI, WORD format.

8. How to delete photos from InkCase+?

Double click the home button to change to the Photo mode, then press and hold the left button it will display a delete icon, tap left button to delete the photo, and tap right button to cancel.

FCC STATEMENT

1. This device complies with Part 15 of the FCC Rules. Operation is subject to the following two conditions:

(1) This device may not cause harmful interference.

(2) This device must accept any interference received, including interference that may cause undesired operation.

2. Changes or modifications not expressly approved by the party responsible for compliance could void the user's authority to operate the equipment.

NOTE: This equipment has been tested and found to comply with the limits for a Class B digital device, pursuant to Part 15 of the FCC Rules. These limits are designed to provide reasonable protection against harmful interference in a residential installation.

This equipment generates uses and can radiate radio frequency energy and, if not installed and used in accordance with the instructions, may cause harmful interference to radio communications. However, there is no guarantee that interference will not occur in a particular installation. If this equipment does cause harmful interference to radio or television reception, which can be determined by turning the equipment off and on, the user is encouraged to try to correct the interference by one or more of the following measures:

Reorient or relocate the receiving antenna.

Increase the separation between the equipment and receiver.

Connect the equipment into an outlet on a circuit different from that to which the receiver is connected.

Consult the dealer or an experienced radio/TV technician for help.

RF Exposure statement

The device has been tested and meets applicable limits for Radio Frequency (RF) exposure.

This equipment complies with FCC radiation exposure requirement. The device can be used in portable exposure condition without RF restriction. Or equivalent meaning.