

RF Antenna Cable Assembly

Specification

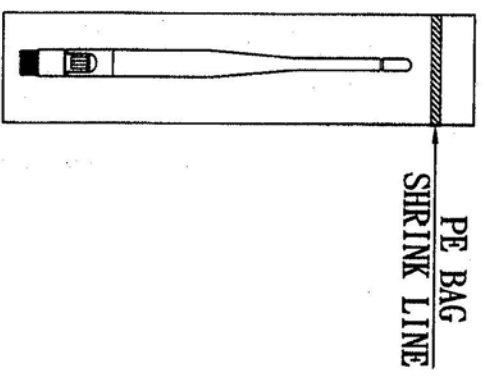
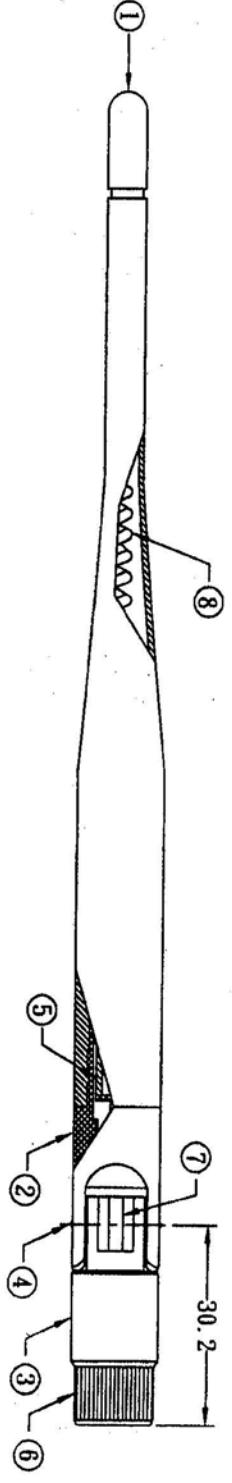
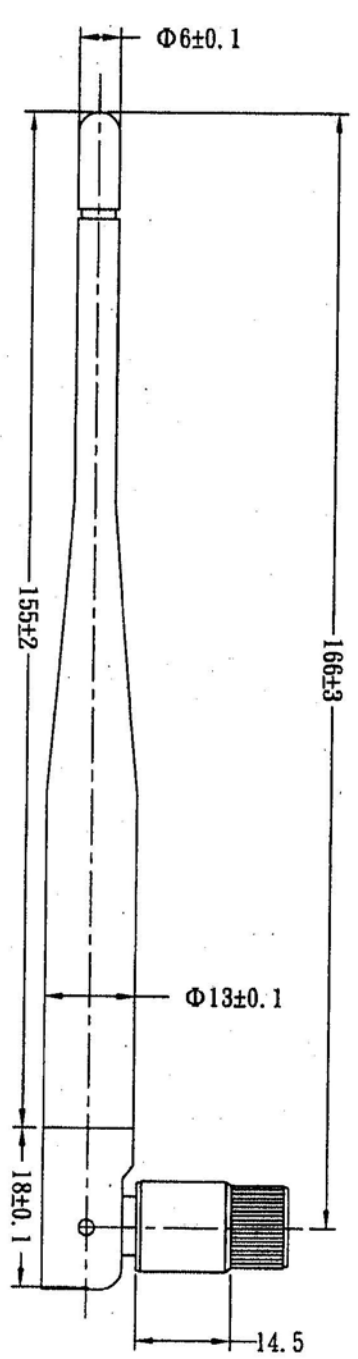
1. Electrical Properties :

- 1.1 Frequency Range..... 2.4GHz ~ 2.5GHz
- 1.2 Impedance 50Ω Nominal
- 1.3 VSWR 1.92 Max.
- 1.4 Return Loss..... -10 dB Maximum
- 1.5 Radiation Omni-directional
- 1.6 Gain(peak)..... 5.0dBi
- 1.7 Polarization..... Linear Vertical
- 1.8 Admitted Power..... 1W

2. Physical Properties :

- 2.1 Cable..... RG-178 Coaxial Cable
- 2.2 Antenna Cover..... TPE
- 2.3 Antenna Base..... PC
- 2.4 Antenna Base..... PBT
- 2.5 Operating Temp. -20°C ~ +65°C
- 2.6 Storage Temp. -30°C ~ +75°C
- 2.7 Color Gray
- 2.8 Connector..... SMA Plug Reverse

5	REV.	DATE	DESCRIPTION
X1	05.08.27		New Issue



PACKING: 1PCS/BAG

8	HELIX	PHOSPHOR BRONZE	1	EQUIVALENT
7	CABLE	RG-178; TRANSLUCENT BROWN; 50 Ω	1	EQUIVALENT
6	CONNECTOR	BIG SMA STRAIGHT PLUG/REVERSE, BLACK	1	EQUIVALENT
5	GROUND TUBE	BRASS, Ni-PLATED	1	EQUIVALENT
4	RIVET	POM, COLOR: BLACK	2	EQUIVALENT
3	ANTENNA BASE	PBT; COLOR: GRAY	1	EQUIVALENT
2	ANTENNA BASE	PC; COLOR: GRAY	1	EQUIVALENT
1	ANTENNA BODY	TPE; COLOR: GRAY	1	EQUIVALENT

XX±5	APPROVED	CUSTOMER: 吉翁
X±10	W. Y. P/N: K181-510009-A	
X±0.1	CHECKED	PART NAME: 2.4GHz HIGH GAIN ANTENNA
XXX±0.005	DRAWN	PART NO.:
	REV. UNIT	DATE: 2005.08.27

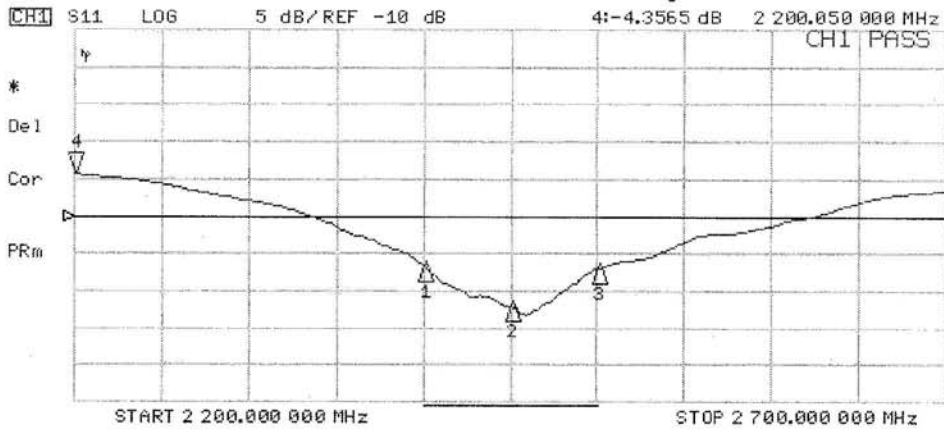
WHA YU
INDUSTRIAL CO., LTD.
瑋裕實業股份有限公司



RF Antenna Assembly

P/NoK181-510009-A Spec:2.4~2.5GHz

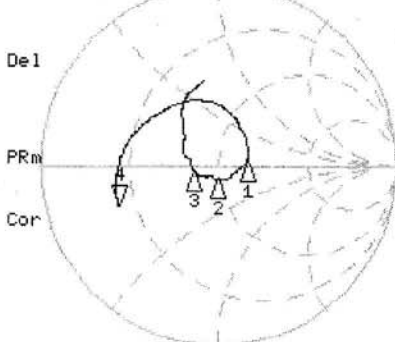
29 Aug 2005 16:12:59



CH1 Markers

1:-16.237 dB
2.40000 GHz
2:-21.612 dB
2.45000 GHz
3:-16.461 dB
2.50000 GHz

CH2 S11 1 U FS
4: 12.695 Ω -8.8867 Ω 8.1404 pF
2 200.050 000 MHz

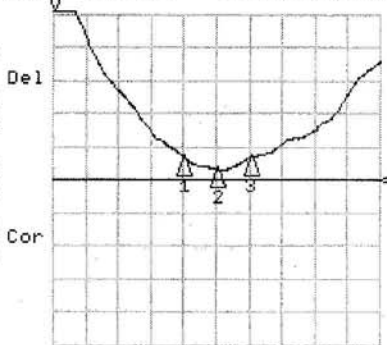


CH2 Markers

1: 68.078 Ω
2.2148 Ω
2.40000 GHz
2: 48.275 Ω
-8.0078 Ω
2.45000 GHz
3: 37.199 Ω
-2.8533 Ω
2.50000 GHz

START 2200.000 MHz STOP 2700.000 MHz

CH4 SWR 500 m / REF 1
S11 4: 4.0706 2 200.050 000 MHz



CH4 Markers

1: 1.3647
2.40000 GHz
2: 1.1812
2.45000 GHz
3: 1.3538
2.50000 GHz

START 2200.000 MHz STOP 2700.000 MHz



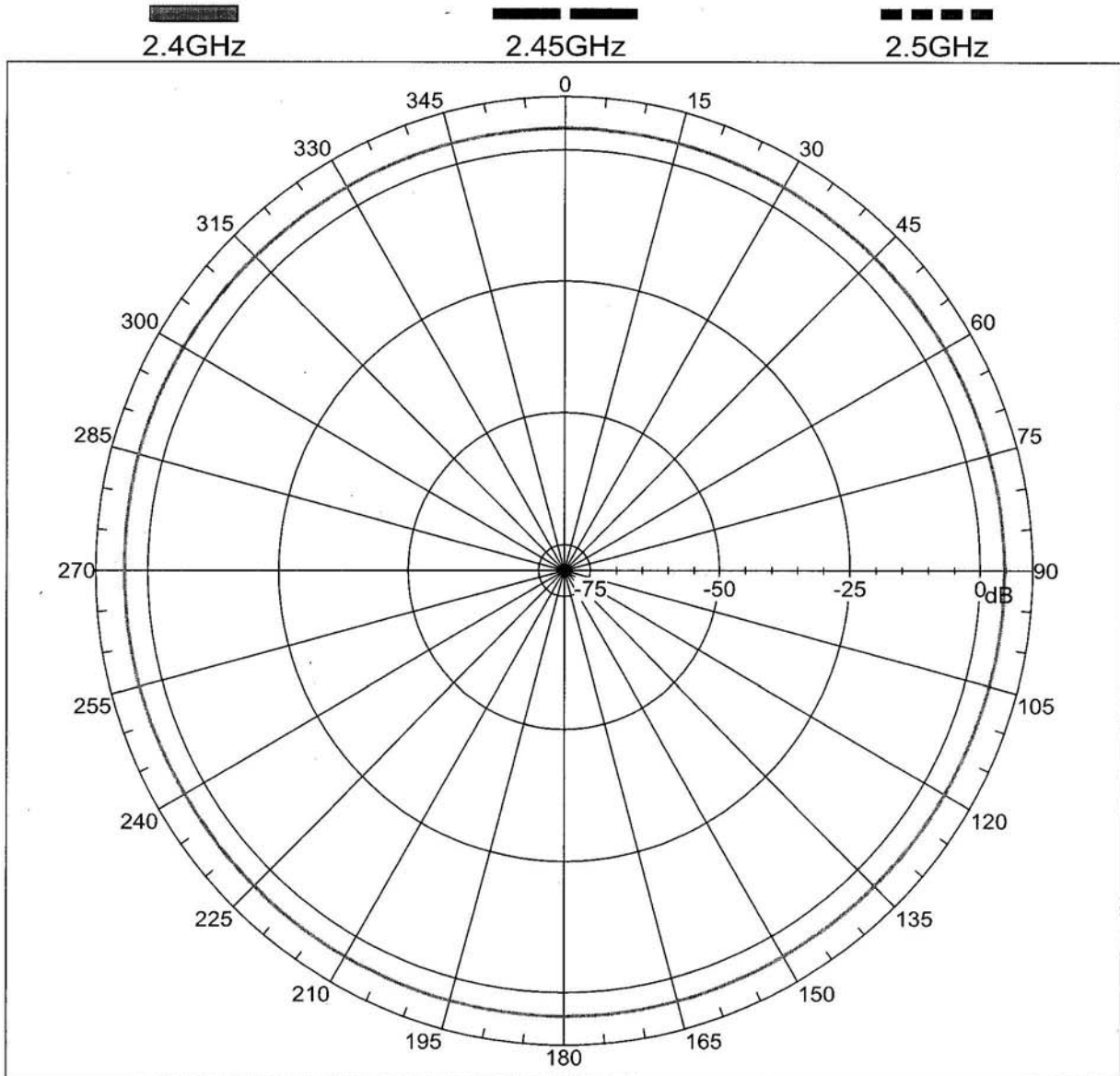
華裕實業股份有限公司

WHA YU INDUSTRIAL CO., LTD

RF Antenna Assembly

SPEC : 2.4 ~ 2.5GHz

Far-field amplitude of antenna-3-h.nsi





譚裕實業股份有限公司
WHA YU INDUSTRIAL CO., LTD

RF Antenna Assembly

SPEC : 2.4 ~ 2.5GHz

Far-field amplitude of antenna-3-e.nsi

