



MOTOROLA

Quick Start Guide

H505

Bluetooth® Handsfree Headset

Get Connected in 4 Quick Steps



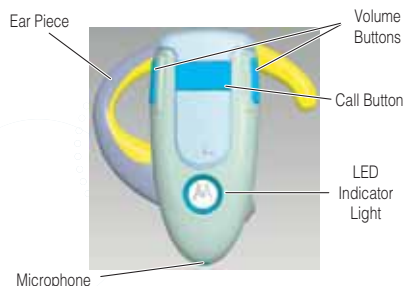
- 1 - CHARGE
- 2 - START BLUETOOTH
- 3 - PAIR
- 4 - TEST AND USE



BEFORE YOU BEGIN

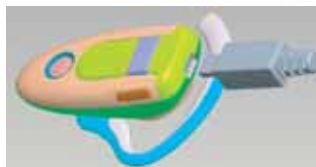
Before using this product, read the Important Safety and Legal Information included in your phone's user's guide, and follow its instructions.

Take a moment before you get started to familiarize yourself with your new H505 Handsfree Headset.



1 CHARGE Your Headset

Charge your headset for 2 hours:



- 1 Plug the Motorola charger into the top of the headset with the release tab facing up.

The LED indicator light turns on when the device is charging. It may take up to 1 minute for the LED to turn on. When the device is fully charged (about 2 hours), the LED indicator turns off.

- 2 Disconnect the charger.



2 START BLUETOOTH Feature Your Headset

Your phone's Bluetooth feature is off by default. To use your headset, the Bluetooth feature must be turned on in your phone.

For most Motorola phones:

- 1 Select **(Menu) > Settings > Connection > Bluetooth Link > Setup.**
- 2 Scroll to **Power.**
- 3 Select **Change.**
- 4 Scroll to **On.**
- 5 Press **Select** to turn on Bluetooth. Bluetooth remains on until you turn the feature off.

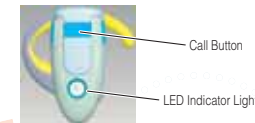
Note: These steps are for most Motorola phones. For other phones, see your phone's user's guide.



3 PAIR Your Headset

Before you can use your headset, you must pair (link) it with your phone.

Step A - PUT THE HEADSET IN PAIRING MODE



- 1 With the headset power off, press and hold the Call button for 4 to 5 seconds and then release.

The power turns on and the headset goes into pairing mode. When the headset is in pairing mode, the LED indicator light turns on and remains steadily lit.

- 2 If the LED indicator light is flashing or does not remain steadily lit, repeat these steps.



3 PAIR CONTINUED Your Phone

Step B - SET THE PHONE TO LOOK FOR YOUR HEADSET

For most Motorola phones:

- 1 On your Motorola phone, select **(Menu) > Settings > Connection > Bluetooth Link > Handsfree > Look for Devices.**

The phone lists all Bluetooth devices it finds.

- 2 Select **Motorola H505.**
- 3 Select **OK** or **Yes** to pair (bond) the handsfree device.
- 4 Enter the passkey: **0000**
- 5 Select **OK.**

When your device is successfully paired with your phone, the LED indicator light changes from steadily lit to flashing.

Note: These steps are for most Motorola phones. For other phones, see your phone's user's guide.



4 TEST AND USE

Your phone and headset are now paired and ready to make and receive calls. To confirm they are successfully paired and operating properly, make a call:

- 1 Open the ear piece and place over your ear.
- 2 On your phone, dial the number you want to call.
- 3 Press **Send** to make the call. If your phone and headset are successfully paired, you will hear ringing.

After you have successfully paired your phone and headset, you do not need to repeat these steps.

USING YOUR H505

See **Quick Use** on the reverse side of this guide for information on using your H505

TROUBLESHOOTING

My phone does not find my headset
Make sure your headset is in pairing mode before looking for devices on your phone (see step 3).

My headset worked before but now it's not working.
Make sure your phone is on and the Bluetooth feature is turned on in your phone (step 2). If the Bluetooth feature has been turned off or was turned on only temporarily, you may need to restart the Bluetooth feature (see step 2) and pair your phone and headset again (see step 3).

Support.
If you need more help, contact us at **1-877-MOTOBLU.**

Motorola, Inc.
Consumer Advocacy Office
1307 East Algonquin Road
Schaumburg, IL 60196

www.hellomoto.com
1-877-MOTOBLU
1-800-331-6456 (United States)
1-888-390-6456 (TTY/TDD United States for hearing impaired)
1-800-461-4575 (Canada)

Guide Number: <TBD>

MOTOROLA and the Stylized M Logo are registered in the US Patent & Trademark Office. The Bluetooth trademarks are owned by their proprietor and used by Motorola, Inc. under license. All other product or service names are the property of their respective owners. © Motorola, Inc. 2005.

Quick Use

H505

**Bluetooth®
Handsfree Headset**

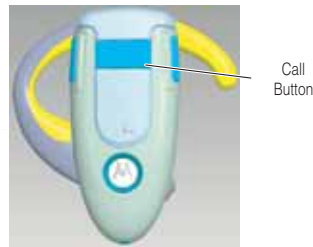
IMPORTANT:

Be sure to first follow the **Quick Start Guide** on the reverse side of this guide to complete initial setup of your H505.

TURNING ON AND OFF

To turn your headset on, press the Call button. The LED indicator light flashes when the power is on.

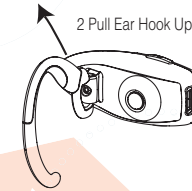
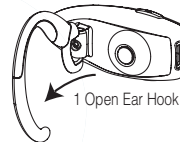
To turn you headset off, press the Call button. The LED indicator light turns off when the power is off.



CHANGING FOR LEFT EAR WEAR

You can wear your H505 headset on your left or right ear. The headset comes ready for the right ear. To change the headset for the left ear:

- 1 Open the ear hook 90 degrees from the headset.
- 2 Gently lift and pull the top of the ear hook up and off the upper hinge pin. Then, pull it away to remove it.
- 3 Flip the headset over.
- 4 Hook the bottom of the ear hook onto the lower hinge pin, then lift and pull the top of the ear hook over the upper hinge pin.

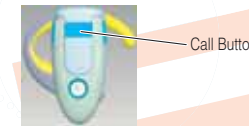


CHANGING VOLUME BUTTON ORIENTATION

If you change your headset for left ear wear, you can also change the orientation of the volume buttons.

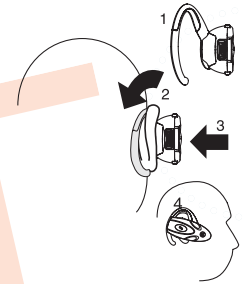
- 1 Turn the headset power off.
- 2 Press the Call button and the volume button you want to assign as the "volume up" button until the LED indicator light flashes twice.

The headset power turns on.



WEARING THE HEADSET

- 1 Open the ear piece.
- 2 Loop the ear piece over your ear.
- 3 Position the microphone as necessary.
- 4 Press the headset to your ear.



MAKING CALLS

To make a voice dial call, short press the Call button and speak the name.

To end a call, short press the Call button.

To put an active call on hold, long press the Call button.

To resume a call on hold, long press the Call button.

To receive a call, short press the Call button.

To reject a call, long press the Call button.

To answer a second incoming call, long press the Call button (places first call on hold).

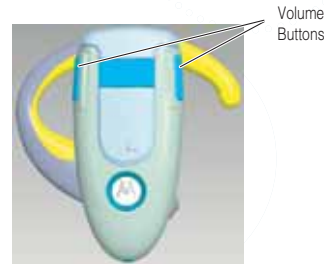
To toggle between two active calls, long press the Call button.

To transfer a call from the phone to headset, short press the Call button.

Note: Your H505 supports both Handsfree and Headset Profiles. Accessing call functions depends upon which profile your phone supports. See your phone's user's guide for more information.

MUTING A CALL

To mute a call, press both volume buttons.



LED INDICATOR LIGHTS

The LED indicator light provides information about your headset status.

With the Charger Plugged In

Headset Indicator	Headset Status
Off	Charging in progress
On (steady)	Charging complete

With No Charger Plugged In

Headset Indicator	Headset Status
Off	Power off
On (steady)	Pairing mode
10 rapid flashes	Pairing successful
Pulsing (2 seconds on, 6 seconds off)	Connected (on a call)
Flashing (.1 second on, 2.9 seconds off)	Standby (not on call)

AUDIO TONES

The audio tones provide information about your headset status.

Audio Tone	Headset Status
Single high tone when pressing volume button	Volume minimum or maximum reached
Five rapid high tones repeated every 20 sec.	Low battery
No audio indications; deteriorating audio quality	Out of range
Series of 4 tones, low to high	Audio link open (headset mode) Active call (handsfree mode)
Ring tone	Incoming call
Single high tone	Pairing confirmation
Single low tone	Voice activation
Dual high/low tone	Voice tag not recognized
Single high tone	End call

FOR MORE INFORMATION ON USING YOUR MOTOROLA H505

Visit us at www.hellomoto.com/bluetooth and click **Support**.

SUPPORT

If you need more help, contact us at **1- 877-MOTOBLU**.

Federal Communication Commission Interference Statement

This equipment has been tested and found to comply with the limits for a Class B digital device, pursuant to Part 15 of the FCC Rules. These limits are designed to provide reasonable protection against harmful interference in a residential installation. This equipment generates, uses and can radiate radio frequency energy and, if not installed and used in accordance with the instructions, may cause harmful interference to radio communications. However, there is no guarantee that interference will not occur in a particular installation. If this equipment does cause harmful interference to radio or television reception, which can be determined by turning the equipment off and on, the user is encouraged to try to correct the interference by one of the following measures:

- Reorient or relocate the receiving antenna.
- Increase the separation between the equipment and receiver.
- Connect the equipment into an outlet on a circuit different from that to which the receiver is connected.
- Consult the dealer or an experienced radio/TV technician for help.

FCC Caution: Any changes or modifications not expressly approved by the party responsible for compliance could void the user's authority to operate this equipment.

The antenna(s) used for this transmitter must not be co-located or operating in conjunction with any other antenna or transmitter.

IC Caution

"Operation is subject to the following two conditions: (1) this device may not cause interference, and (2) this device must accept any interference, including interference that may cause undesired operation of the device."

IMPORTANT NOTE:

IC Radiation Exposure Statement: This equipment complies with IC RSS-102 radiation exposure limits set forth for an uncontrolled environment.