

## TI Reference Antenna Photo

### 3.6 xWR6843ISK Antenna

The xWR6843ISK includes onboard-etched long range antennas for the four receivers and three transmitters. [Figure 3-8](#) shows the PCB antennas.

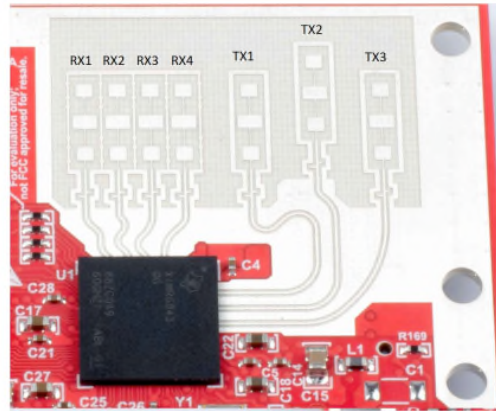
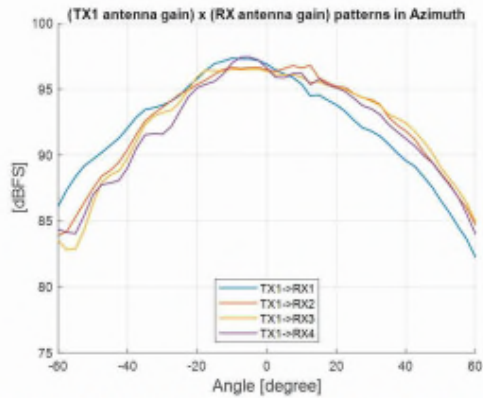


Figure 3-8. PCB Antennas

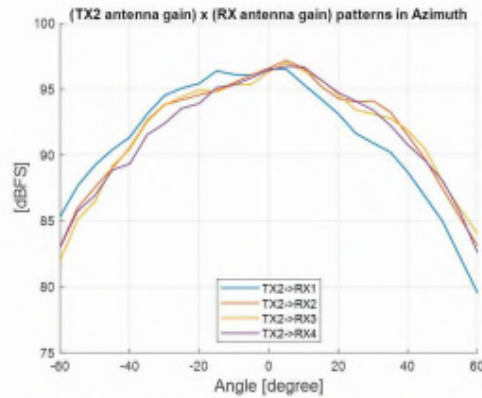
Antenna Gain is ~7dB

Figure 3-10 through Figure 3-12 shows the antenna radiation pattern with regard to azimuth. Figure 3-13 through Figure 3-15 show the antenna radiation pattern with regard to elevation for TX1, TX2, and TX3.

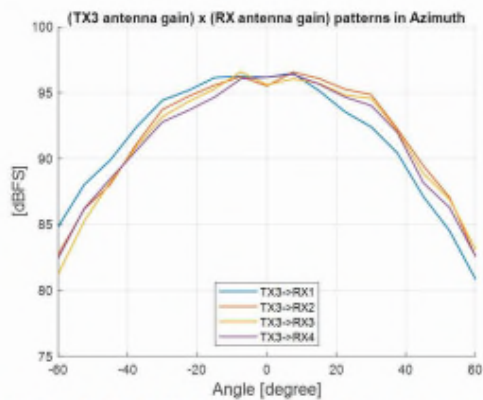
All of the measurements were done with a Tx and Rx combination together. Thus, for the -6dB beam width, you must see a -12db (Tx (-6dB) + Rx(-6dB)) number.



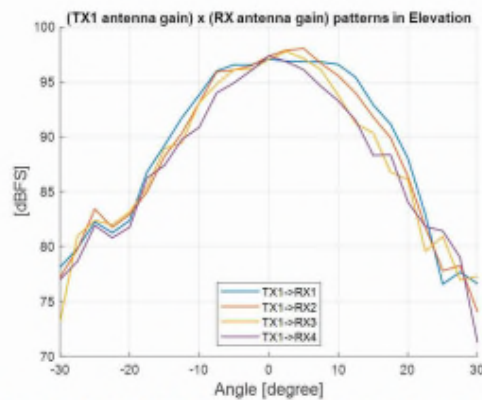
**Figure 3-10. TX1 Antenna Radiation Pattern in Azimuth**



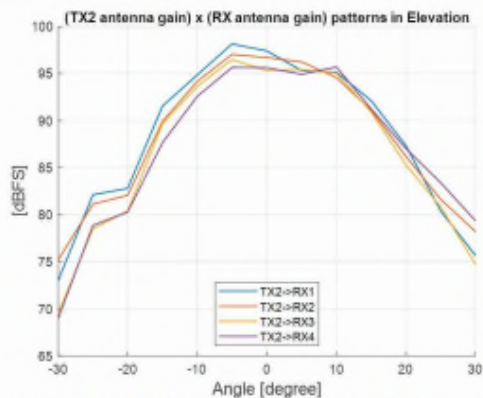
**Figure 3-11. TX2 Antenna Radiation Pattern in Azimuth**



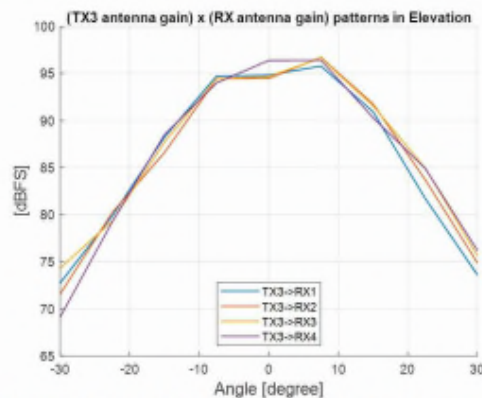
**Figure 3-12. TX3 Antenna Radiation Pattern in Azimuth**



**Figure 3-13. TX1 Antenna Radiation Pattern in Elevation**



**Figure 3-14. TX2 Antenna Radiation Pattern in Elevation**



**Figure 3-15. TX3 Antenna Radiation Pattern in Elevation**