

There are several ways to set AD-HOC mode, but the following way is the easiest way to set AD-HOC setup. Please see the following procedure.

NTD36HD NETWORK setting

Go to NETWORK in SETUP menu and enter the following lists.

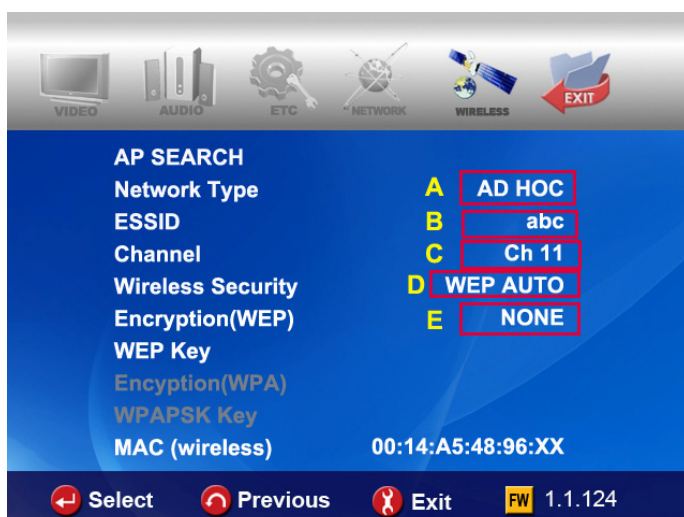
- A → Wireless Net.
- B → Static IP
- C → 200.200.0.2 (IP Address)
- D → 255.255.255.0(Subnet Mask)
- E → 200.200.0.1



NTD36HD WIRELESS setting

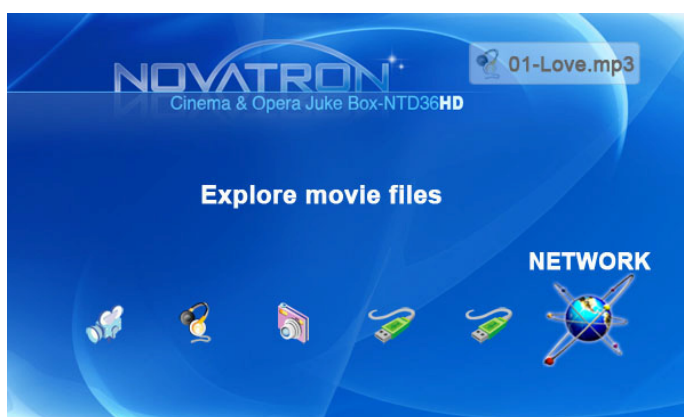
Go to WIRELESS in SETUP menu and enter the following lists.

- A → AD HOC.
- B → Enter ESSID(ex. abc)
- C → Select Channel (ex. Ch11)
- D → Select “WEP AUTO”
- E → Select “NONE”



Save setting and Return to main

To save setting and return to main, press “**SETUP**” button on remote controller.



Set IP and Subnet mask with a PC

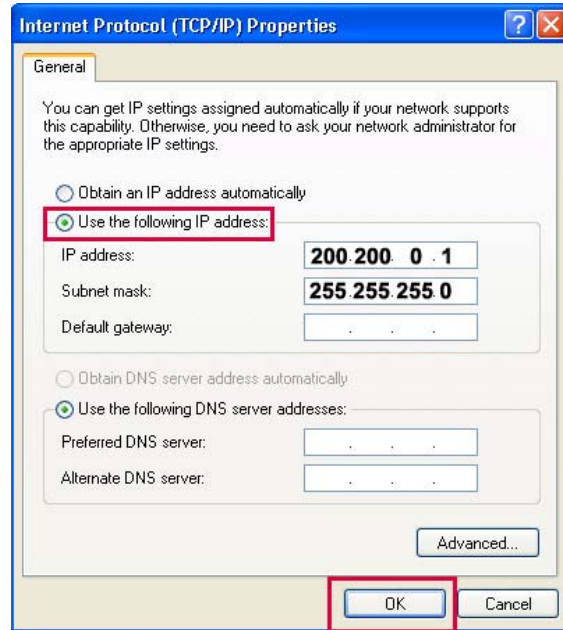
On the PC, select Network connection in the control panel. Open Properties for the network connection that is connected to the NTD36HD. Select Properties for the Internet protocol(TCP/IP). Select "Use the following address".

Enter the IP address below.

IP address : 200.200.0.1

Subnet mask : 255.255.255.0

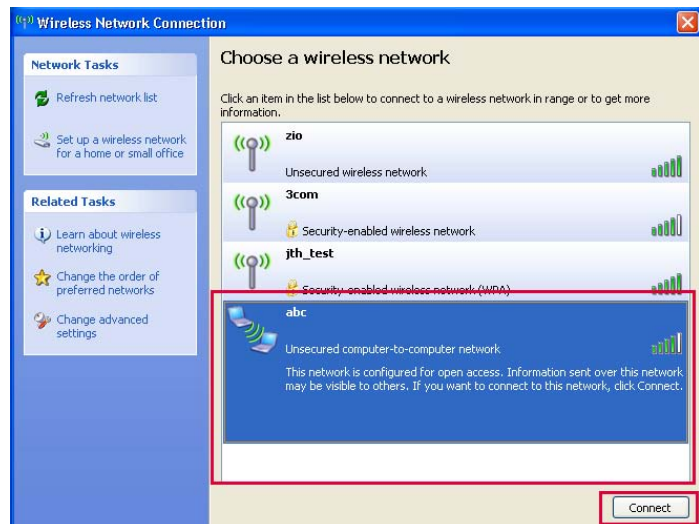
Click "OK"



Zero Configuration utility-a


Open wireless zero configuration utility and choose a wireless network with same ESSID(ex.abc) that you entered with NTD36HD.

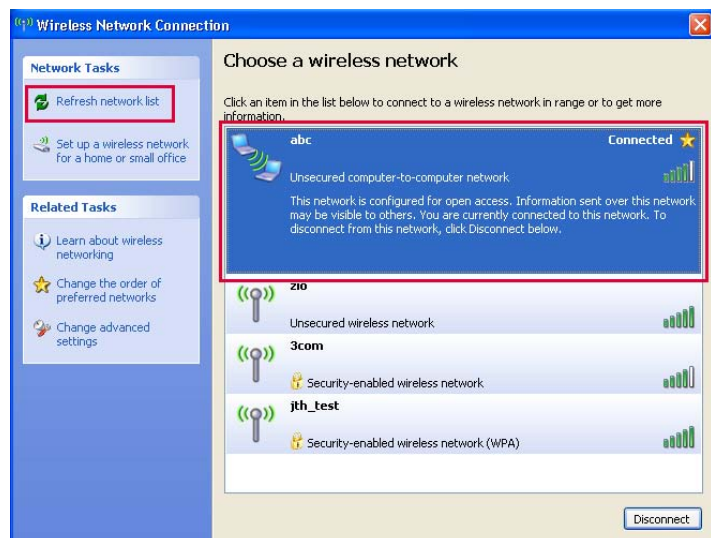
Click "Connect".



Zero Configuration utility-b

After connecting successfully, you can browse shared folder with NTD36HD.

 <p>TIP</p>	<p>Refresh network list.</p>
<p>If you can not find the ESSID that you entered with NTD36HD, please try to click "Refresh network list" on wireless Network Connection.</p>	



With shared folder, you can easily get multimedia file like movie, music and photo as if these files are in HDD of NTD36HD. To use shared folder, you must proceed the following steps.(based on window XP)

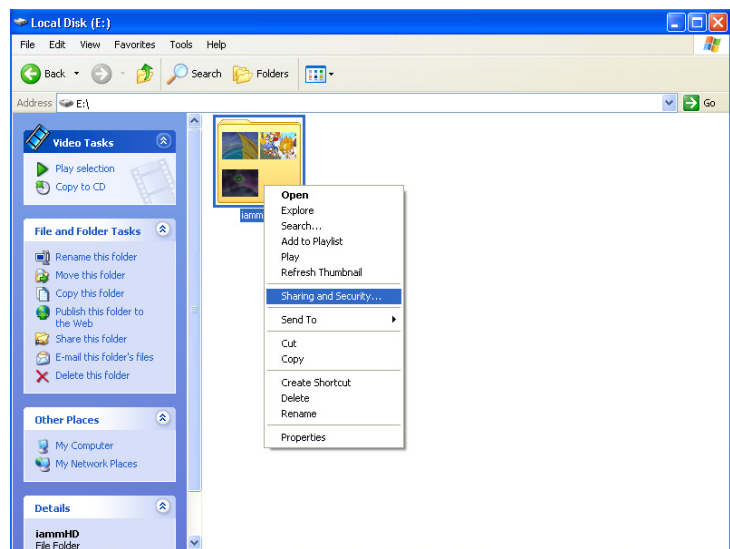


TIP

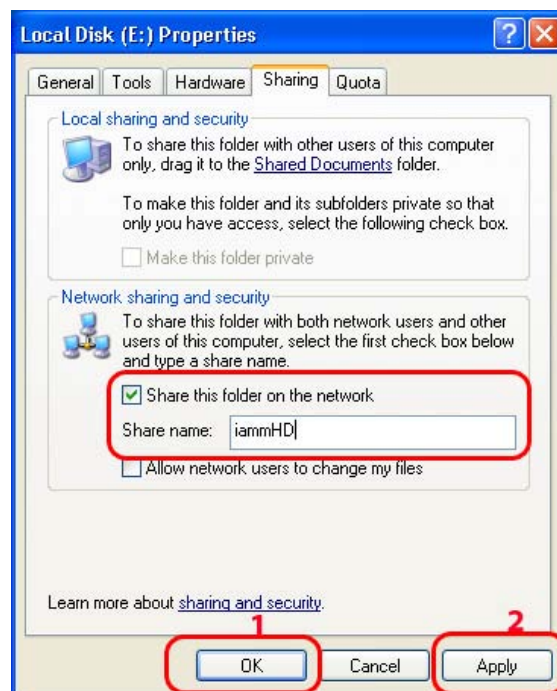
NOTE.

If firewalls are set in your PC, it may cause problem for NTD36HD to communicate with your PC. So, you need to disable the firewall program in your PC.

1. Click right button of mouse on the folder that you want to share and select **“Sharing and Security...”**.



2. Check on **“ Share this folder on the network”**. Fill in the box of “Share name”. And then, click **“OK”** and **“Apply”** button for confirmation.



3. Then, each shared name will be listed up on screen if NTD36HD is connected.

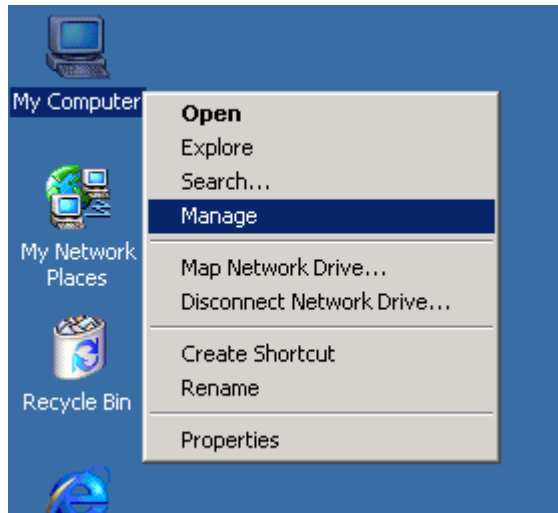


NTD36 HD

Network configuration under window 2000

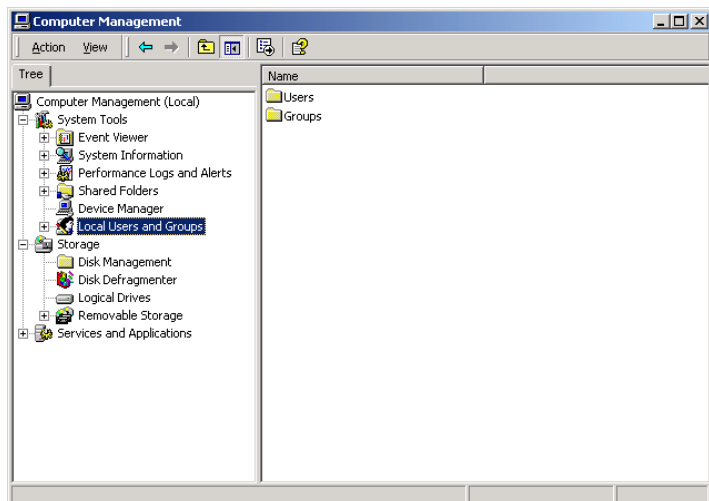
STEP 1

Click the right button on "My Computer" icon and choose "manage"



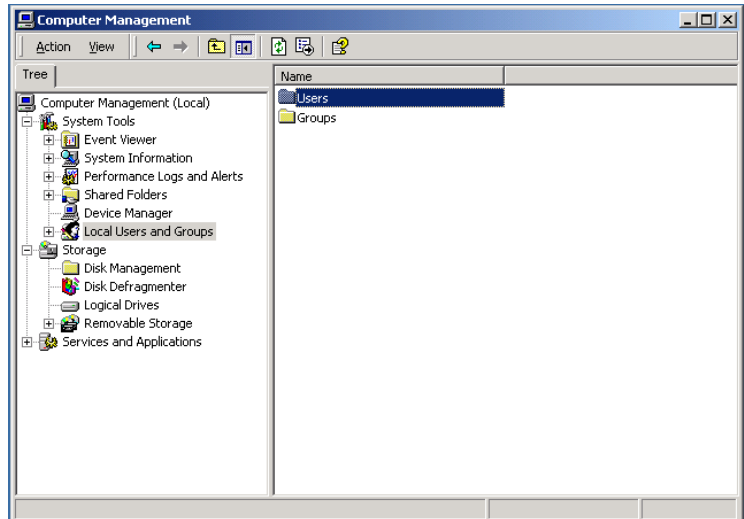
STEP 2

Go to " Local Users and Groups"



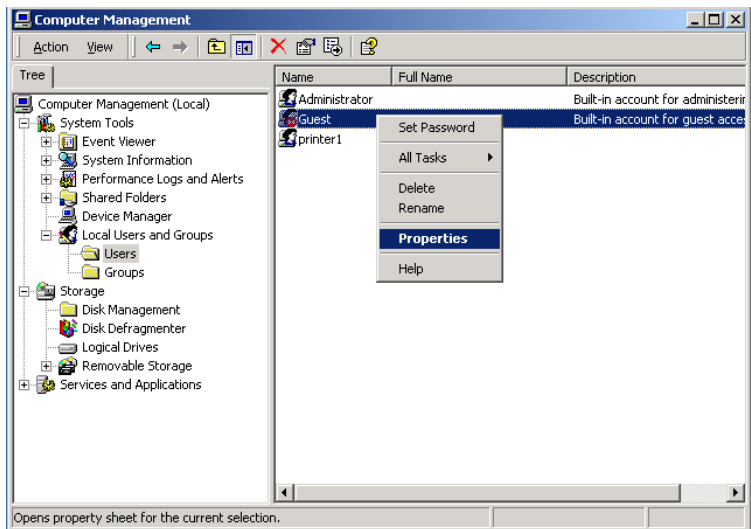
STEP 3

Click the “Users” folder



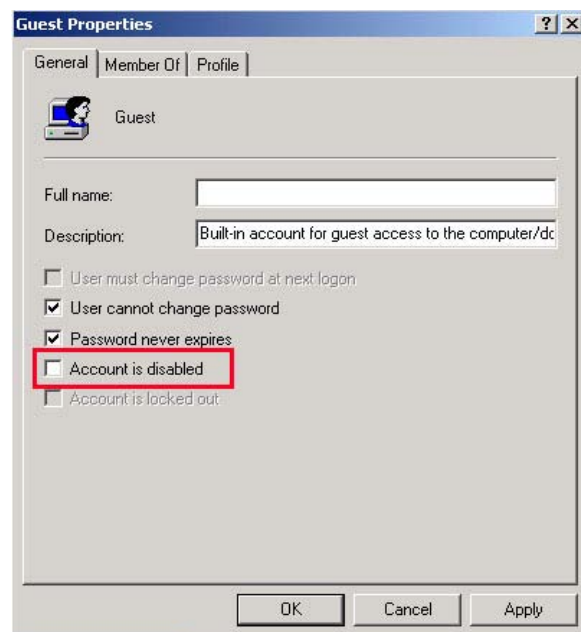
STEP 4

Click the right button on “Guest” and click “Properties”



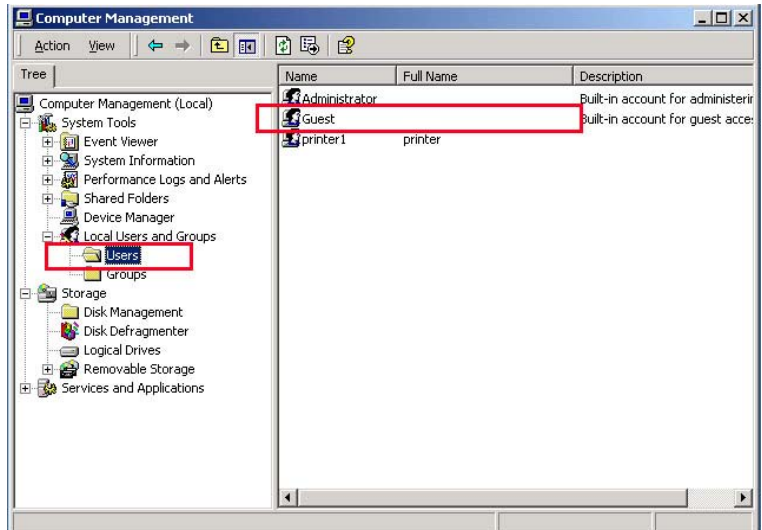
STEP 5

Release the check box on “Account is disabled” and Apply this setting



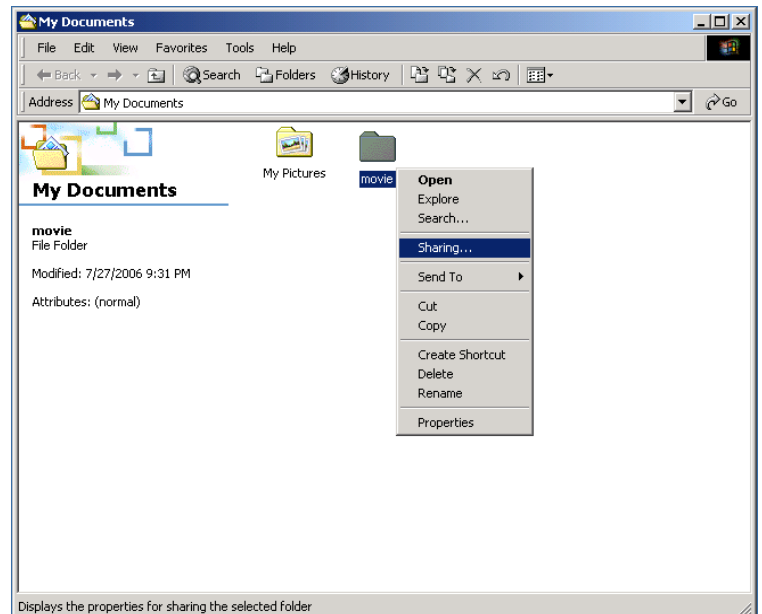
STEP 6

Check that “Guest” will be activated.



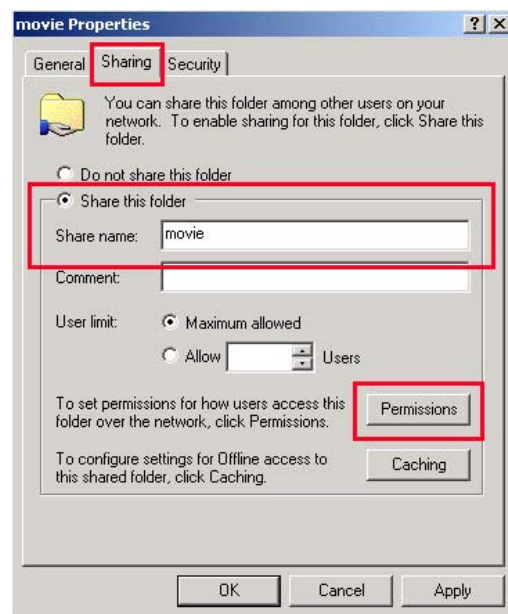
STEP 7

Click right button of mouse on the folder that you want to share and select “Sharing...”



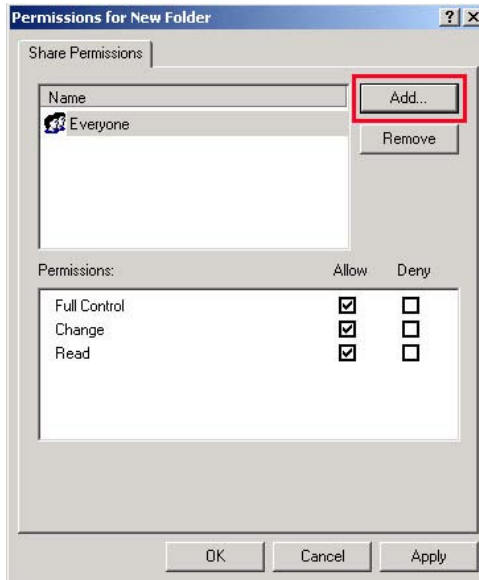
STEP 8

Click radio box on “ Shared this folder” and click the “Permissions”



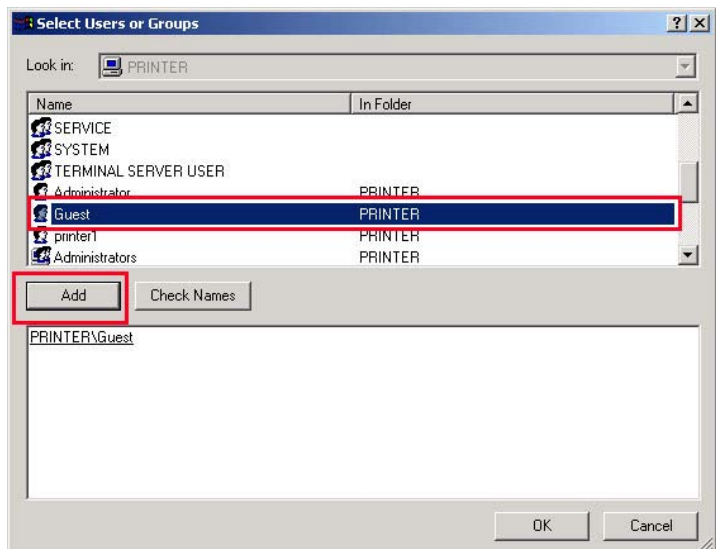
STEP 9

Click the “Add...”



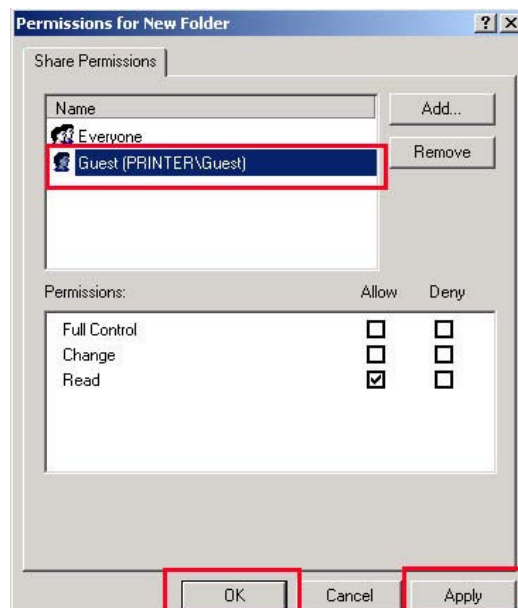
STEP 10

Click the “Add” after selecting “Guest” and Click “OK”



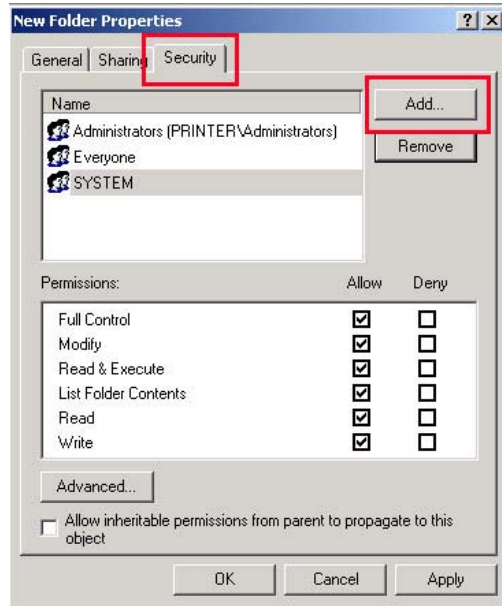
STEP 11

Check the added “Guest” and apply this setting.



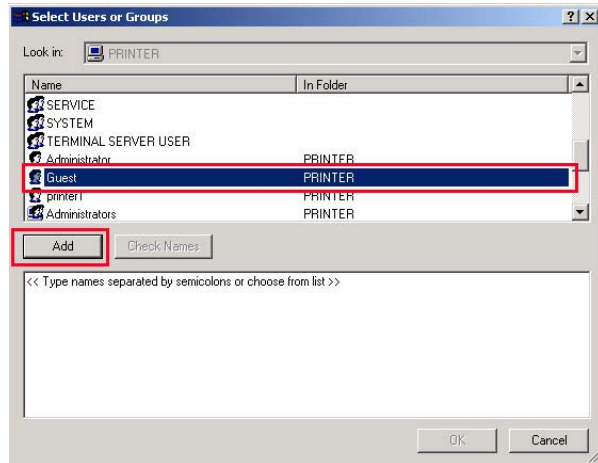
STEP 12

Go to **security** tab and click the “Add...”



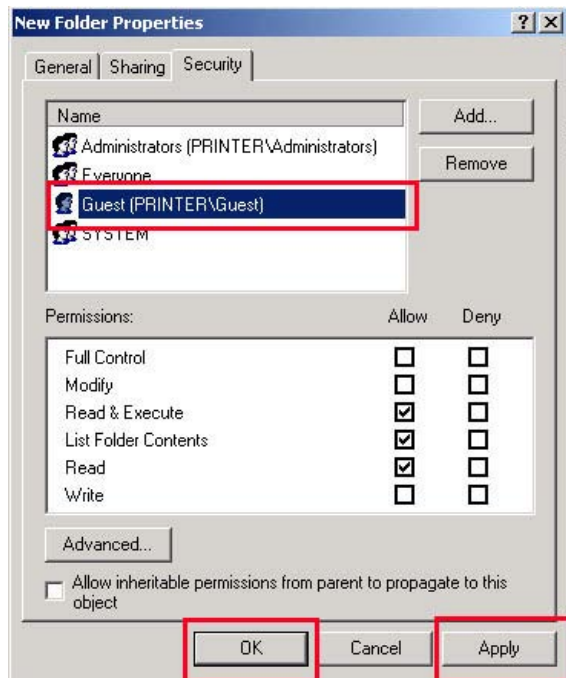
STEP 13

Click the “Add” after selecting “Guest” and Click “OK”



STEP 14

Check the added “Guest” and apply this setting.



IP Address Setup :Ethernet Network using a direct connection

Without a router or HUB, you can connect to a PC directly with crossed cable.

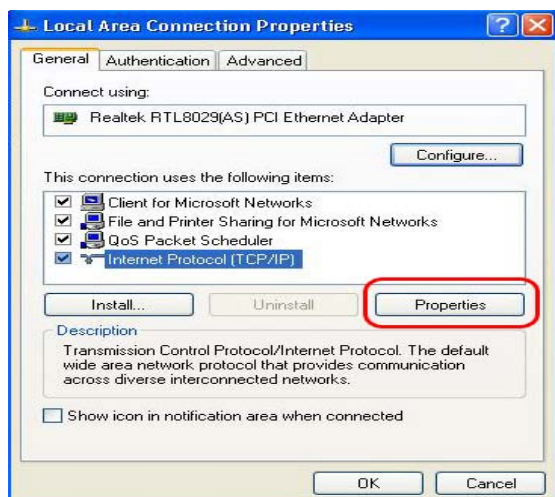
If your PC has only one LAN card and it is already occupied for internet connection, you need one more LAN card for NTD36HD connection if you use both simultaneously.

Please see the below guides step by step to set IP address.

1. Select Network Connection in the Control Panel. Select the **Local Area Connection** to be connected with NTD36HD and click the right button of mouse. Select **Properties**.



2. Select **internet Protocol (TCP/IP)** and click **Properties**.

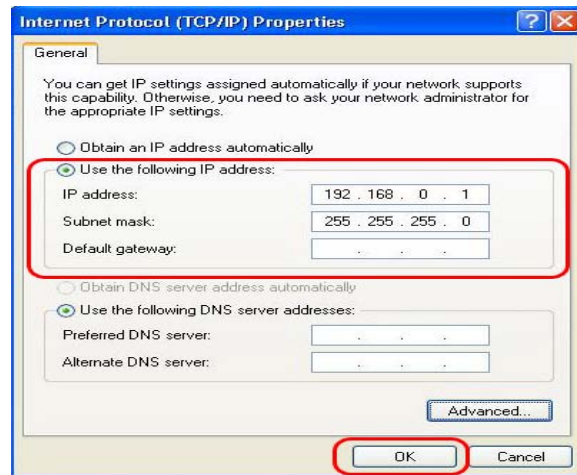


3. Select **“Use the following IP address”**

Enter the IP address below.

IP address 192.168.0.1

Subnet mask 255.255.255.0



5. Then, start NTD36HD, press **“SETUP”** button on your remote controller and go to **“NETWORK”** section. Select **“Ethernet”** on **“Network Connection”** and **“Static IP”** on **“Address Setup”** Then input the following address.

IP Address 192.168.0.2

Netmask 255.255.255.0

Default gateway 192.168.0.1

Press **“SETUP”** on your remote to exit this menu. Check that NETWORK icon is highlighted on main screen.



4

MULTIMEDIA FILE PLAYBACK

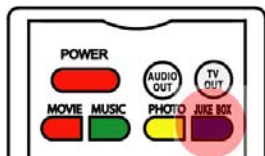
This section explains about basic operation for Multimedia file playback.

NTD36 **HD**

How to use JUKE BOX CREATOR(BGM)

1. Go to JUKE BOX CREATOR

Click the “JUKEBOX” on screen or press “JUKEBOX” button of remote controller. Then, “JUKEBOX CREATOR” screen will be displayed..

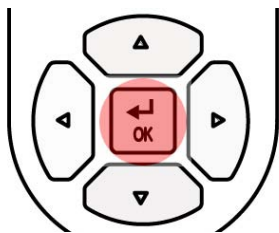




JUKEBOX
+
“OK”

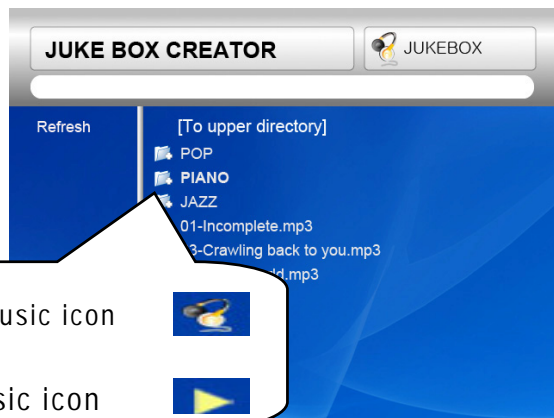


2. Make ‘PLAYLIST’

Select music file and press “OK” button. Then, each selected file will be stored into ‘PLAYLIST’.



Not selected music icon 
Selected music icon 



3. Playback files stored in ‘PLAYLIST’.

To play selected music files, select the “PLAY ►” on screen and press “OK” button of remote controller. And you may return to file browser screen through “EXIT” on screen. JUKEBOX on/off can be controlled by pressing “BGM ON” button of remote controller. * Note : if you select ‘CLEAR’ on screen and press “OK” button, all files in ‘PLAYLIST’ are deleted.



4. Reference

JUKEBOX function can be used when you do other jobs like Photo Slideshow or On-screen jobs.

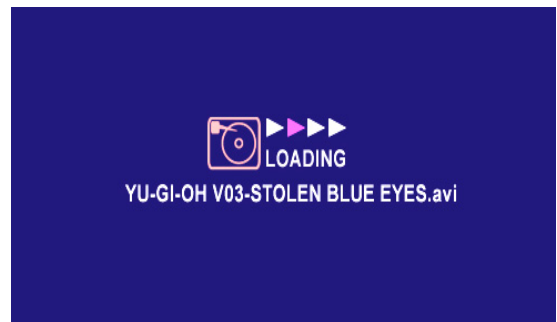


NTD36 HD

Enjoying movie file

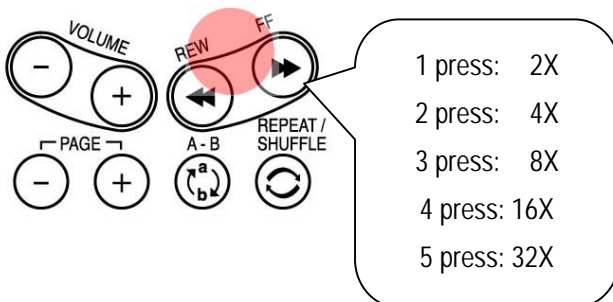
1. Loading Message

Press “PLAY ► || ” or “OK” button to start movie file. When loading a file, this message comes out. Depends on supported file format and size, loading time is different



2. Fast searching

In playing a movie file, you can search the position that you want to see by pressing “REW, FF” button. It supports up to 32X searching.



3. Previous/Next file Playback

Pressing “-PAGE+” button, previous or next movie file will be played.

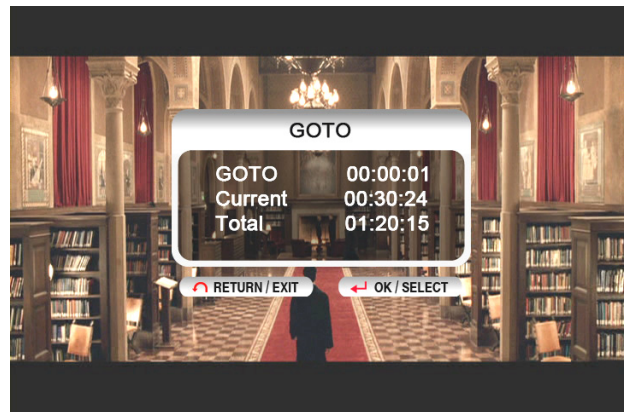
After pressing “-PAGE+” button, Select YES or NO by pressing “◀”, “▶” button and press “OK” button.



4. GOTO function

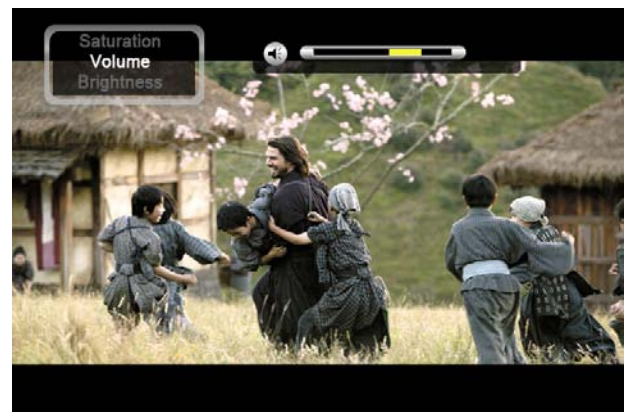
In playing DVD, if you pressing “GOTO” button, you can go to the specific position that you want.

After pressing “GOTO” button, input the time and press “OK” button
 XX : YY : ZZ
 (H) : (M) : (S)



5. Control Volume level

In playing movie file, press “-VOLUME+” button.



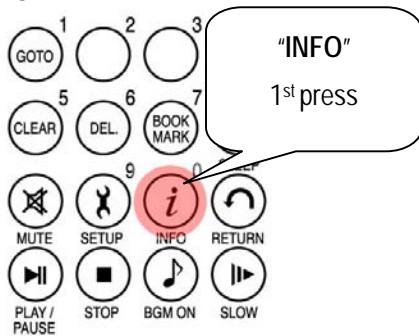
6. MUTE

For sound off, press **"MUTE"** button. To clear this function, press **"MUTE"** button once again.



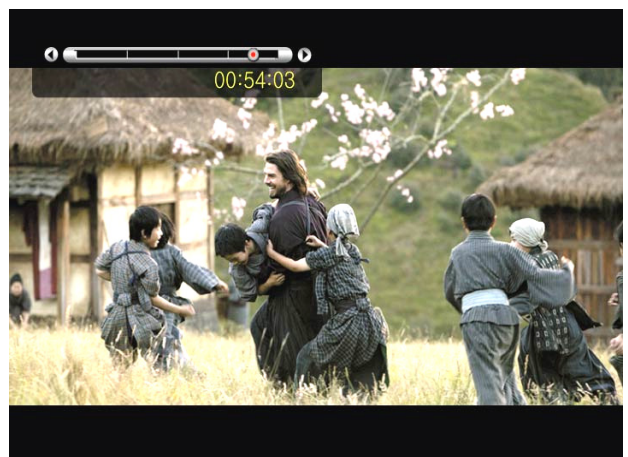
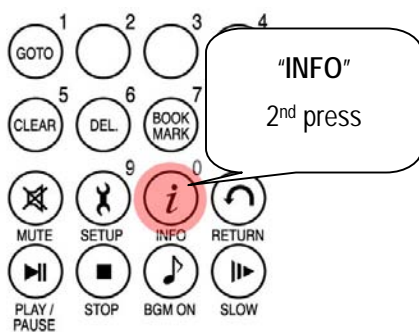
7. Checking information of playing file

In playing movie file, press **"INFO"** button. The playing file information will be shown..



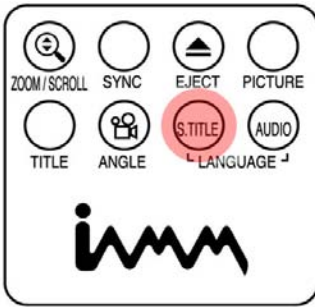
8. Checking current playing time.

To check current playing time, press **"INFO"** button two times. To clear this, press **"INFO"** button once again.

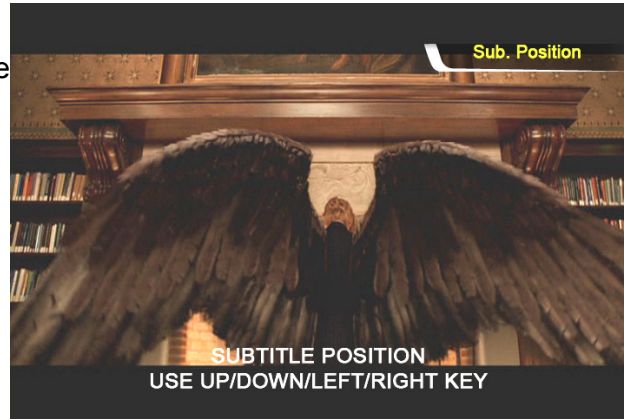


9. Controlling subtitle position and size

In playing movie file, you can control subtitle size and position with S.TITLE button.

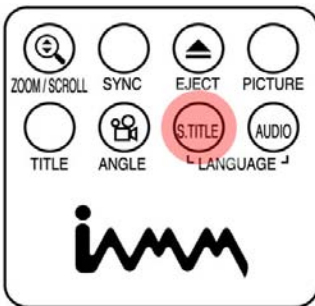


1st ~ 5th press

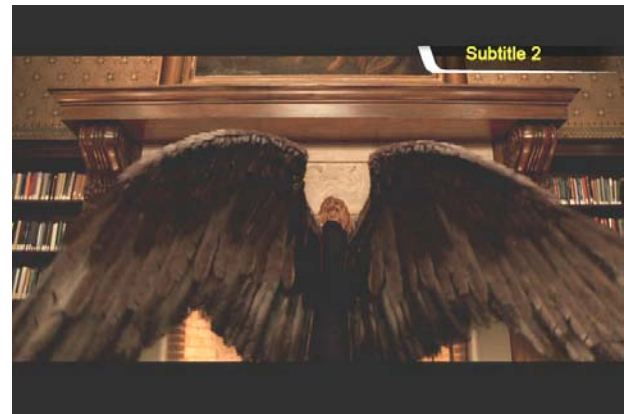


10. Multi Subtitle control

If the playing movie contains multi subtitle, you can select a subtitle that you want to see by pressing “S.TITLE” button. To select subtitle, press “OK” button



2nd ~ 3rd press

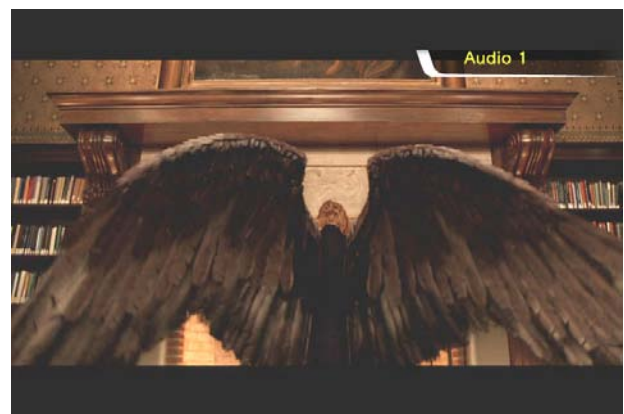


11. Multi Audio control

If the movie file contains multi audio, you can select an audio that you want by pressing “AUDIO” button.

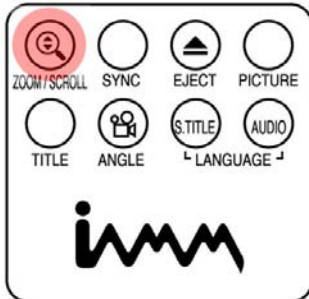


1st ~ 2nd press



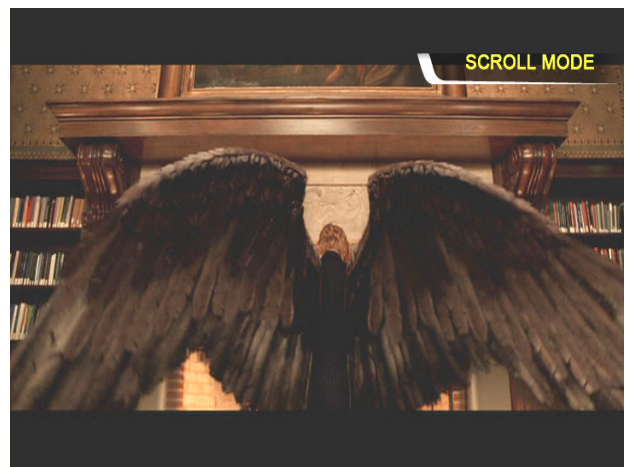
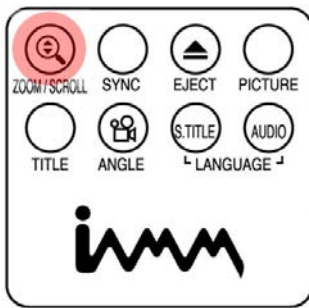
12. Enlarging the screen

To enlarge screen size, press “**ZOOM/SCROLL**” button and control the screen size by pressing directional button(▲▼◀▶).



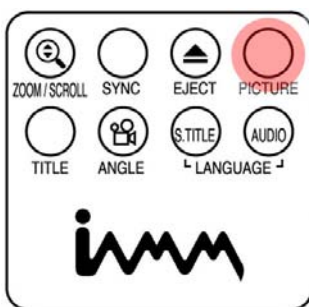
13. Scrolling the enlarged screen

To move enlarged screen, press “**ZOOM/SCROLL**” button once again and move the enlarged screen by pressing directional button(▲▼◀▶).



14. Screen Color control

To adjust color setting, press “**PICTURE**” Button and control Brightness, Saturation and Contrast by pressing directional button(◀▶).



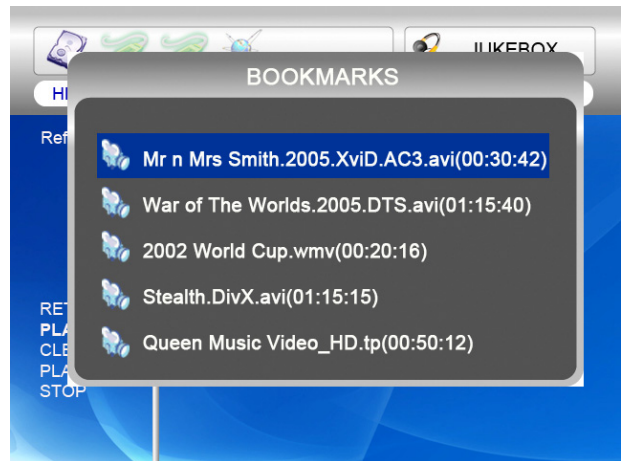
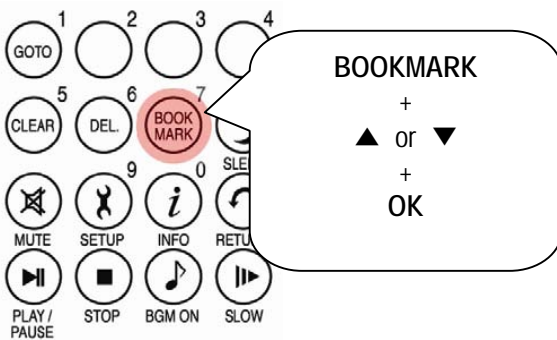
15. Memorizing a specific position

In playing movie file, the current playing position is saved by pressing “**BOOKMARK**” button.



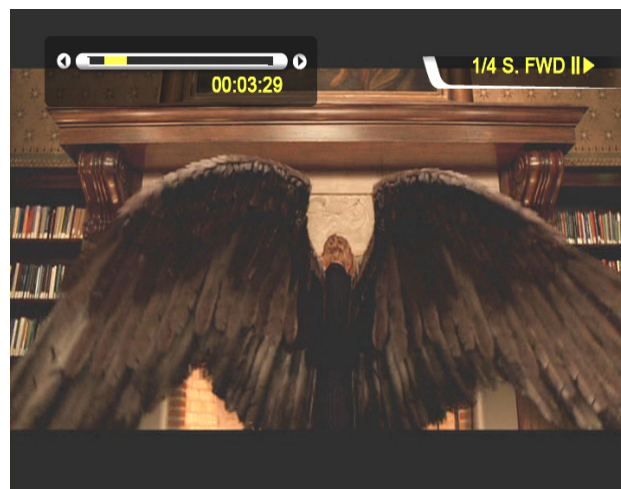
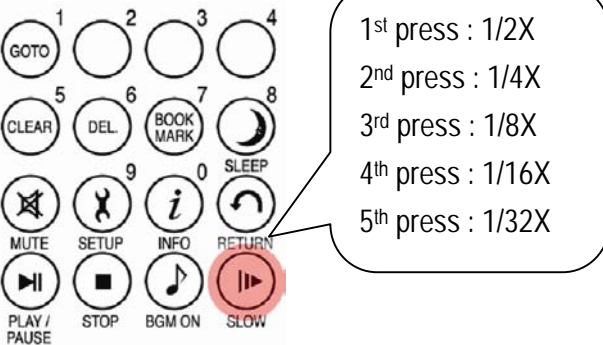
16. BOOKMARK list

Pressing “BOOKMARK” button again, the latest Bookmarked List is shown. (Max. 5 lists)



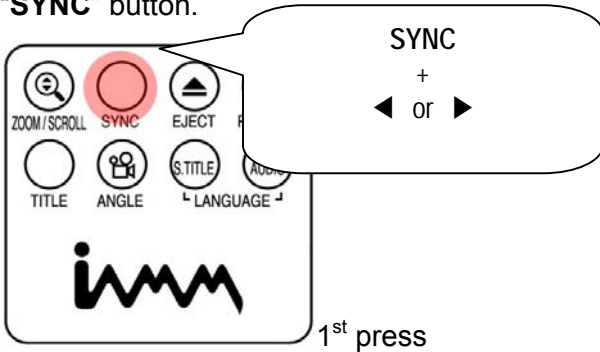
17. Playback with slow speed

NTD36HD supports ‘slow playing back’ function up to 1/32X.



18. Control subtitle sync

If a movie and a subtitle do not match, you can control a subtitle showing time by pressing “SYNC” button.

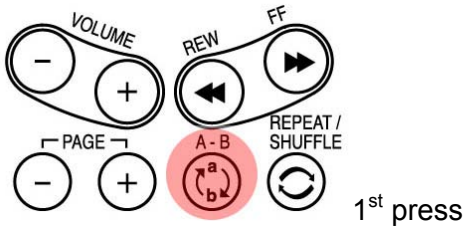


1st press

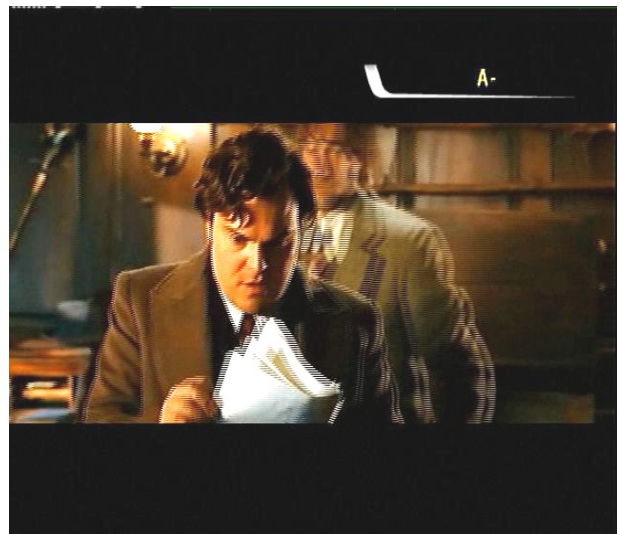


19. Section Repeat – Set the beginning point

Press “A-B” button once to select the beginning “A-” point.

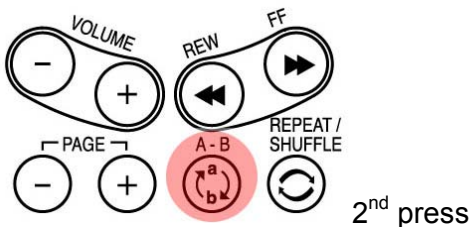


1st press



20. Section Repeat – Set the ending point

Press “A-B” button again to select the Ending “-B” point. A-B section will be repeated. To clear this setting, press “A-B” button once again.



2nd press



*note : This function is useful for language study or enjoying sports moving picture.