

LOREX®

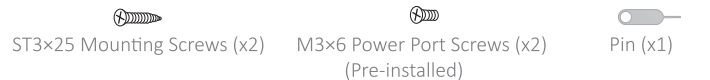
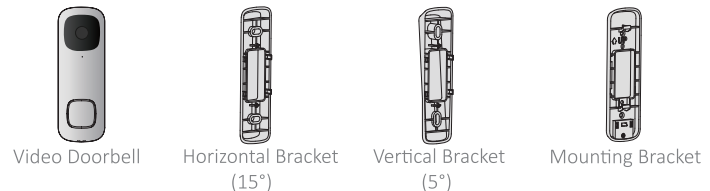
2K QHD Video Doorbell

Quick Start Guide



lorex.com

Package Contents

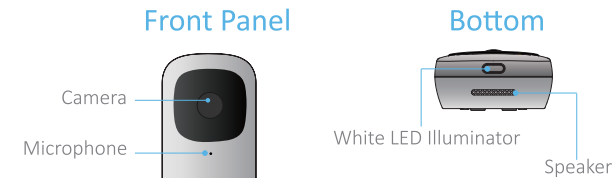


User-supplied Tools

NOTE
The 15/64" masonry drill bit may be required if installing on concrete, stucco or brick.

2

Product Overview



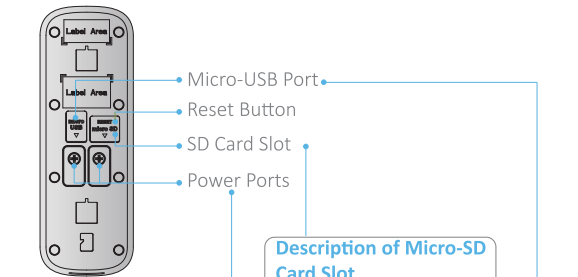
Description of Call Button
Press the button to ring the doorbell

Description of Indicator Light

• Restarting	Blue Solid
• Restore to Default	Red Solid
• Motion Detected	Blue Flashing (By Default)
• Offline	Red Flashing
• Talking	Green Flashing
• Calling	Green Spinning

3

Rear Panel



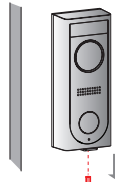
Description of Power Ports
Used to connect indoor mechanical or electronic chime and supply power

Description of Micro-SD Card Slot
Insert micro SD card for videos/snapshots storage

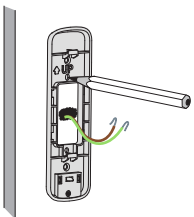
Description of Micro-USB Port
Used as an alternative port to supply power if you do not want to drill holes on the wall

4

Step 1: Mark mounting holes

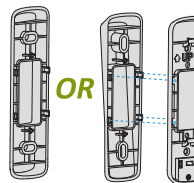


A If you have an existing doorbell, turn off the power, remove the doorbell from the wall and disconnect the wires. These are the wires to be used to install your new doorbell.



B Place the mounting bracket to fit your existing doorbell wiring. Then mark the screw holes according to the bracket.

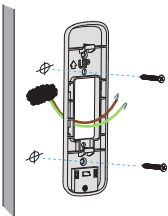
(Optional) Step 2: Install angled mounting brackets



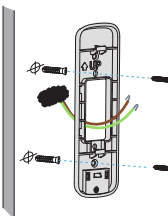
Attach the horizontal or vertical bracket to the mounting bracket if you want to change the angle of the doorbell for a better view.

5

Step 3: Secure the mounting bracket



A For wood, drywall or soft surfaces: Secure the mounting bracket to the mounting surface using the Phillips head screwdriver and mounting screws.



B For concrete, stucco or brick: Use a 15/64" drillbit to drill holes where marked. Use included mounting screws and wall anchors to secure the mounting bracket to the wall.

6

Step 4: Scan the doorbell

A Download and install the free **Lorex Home** app from the App Store or Google Play Store.

B Tap the Lorex Home icon to launch the app. Tap **Sign up**, then follow the on-screen prompts to create an account.

Record your account details and store it in a secure location.

C Once the status LED on the doorbell is flashing blue, tap **+** in the Lorex Home app.

D Scan the QR code on the back of the doorbell with your mobile device's camera.



NOTE

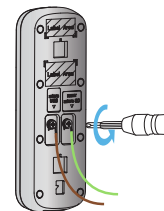
If your mobile device cannot scan the QR code, tap **Manually enter Device ID**.

Once you have scanned the doorbell into your Lorex Home app, you can choose to follow along with the in-app setup video, or continue with the printed instructions.



7

Step 5: Wire the doorbell



A Loosen the power port screws with the Phillips head screwdriver.

B Hook the power cables underneath the power port screws, then re-tighten the screws to secure the cables.

NOTE



If your existing doorbell wiring is too short, remove the power port screws completely, then thread the screws through the included extra wires. Use the included wire caps to extend your wiring.



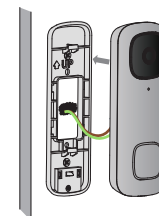
To attach the wire cap, align the ends of your existing wiring and extra wires, place the wire cap over the exposed wiring and twist the wire nut clockwise to tighten.



Ensure there is enough space to fit the cable connectors and wire caps into the hole in your wall.

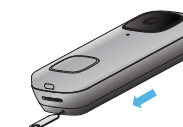
8

Step 6: Connect the doorbell



Push the wiring back into the wall. Slide the mounting bracket upwards so the plastic tab on the bracket locks into the notch on the doorbell.

Remove the mounting bracket



To remove the mounting bracket from the doorbell, insert the pin into the hole at the bottom of the mounting bracket until the inner buckle is reached. Then slide the bracket down.

9

Need Help?

Visit us online for up-to-date software and complete instruction manuals.



- 1 Visit [lorex.com](https://www.lorex.com)
- 2 Search for the model number of your product
- 3 Click on your product in the search results
- 4 Click on the **Downloads** tab

10