



TOUGHBOOK P-01K

INSTRUCTION MANUAL '18.9

Introduction

Thank you for selecting the “P-01K”.

Read this manual before and during use to ensure proper operation.

About Manual

The operating procedures of the P-01K are described in the following manuals.

■ “Quick Start Guide” (In Japanese only) (Basic Package)

This guide describes operations of basic functions.

■ “Instruction Manual” (In Japanese only) (PDF)

This manual describes detailed guidance and operations of functions.

Download from the DOCOMO website

<https://www.nttdocomo.co.jp/english/support/trouble/manual/download/p01j/index.html>

※ The latest information is available for download here. Note that the URL and published contents may be modified without notice.

For using this manual

- Displays and illustrations shown in this manual are for reference. The actual ones might differ.
- Note that “P-01K” is referred to as “this mobile phone” or “mobile phone” in this manual.
- Explanations in this manual mostly use the screen of the “white” handset.
- In the operating procedures of this manual, key operations are described with simplified key icons.
- The functions which use a microSD card are described in this manual; however, you need to obtain a microSD card separately to make these functions available. See page 111 for the microSD card.
- Note that when changing the settings of this mobile phone, there may be differences from the procedures described in this manual.

Reproduction of this manual in part or in whole without prior permission is prohibited.

The contents of this manual are subject to change without prior notice.

Optional items (option) compatible with this mobile phone can be viewed and purchased at the online docomo Shop.

<https://www.mydocomo.com/onlineshop/options/index.html> (In Japanese only)

Contents/Precautions

Contents




Contents/Precautions	1
Contents	1
Using This Mobile Phone	3
Precautions (ALWAYS FOLLOW THESE DIRECTIONS).....	4
Handling Precautions	14
Waterproof/Dust-proof Performance	19
Getting Started	25
Confirming the included items	25
Description of parts	27
Installing SIM cards (certain models only)	28
Installing an SD card	35
Installing and removing the battery.....	37
Replacing the battery (Battery warm swap)	38
Charging the battery	40
Turning the unit on and off.....	41
Appendix/Index	131
Specific Absorption Rate (SAR) of Mobile Phones	149
European RF Exposure Information.....	150
CE Declaration of Conformity	150
FCC Notice	151
FCC RF Exposure Information	151
Important Safety Information	152
Export Administration Regulations	152

Using This Mobile Phone

- This mobile phone is compatible with LTE, W-CDMA and wireless LAN systems.
- Because this mobile phone uses radio waves, you cannot use it in places where the radio waves do not reach such as inside tunnels, basements and buildings, where the radio waves are weak even outdoors, out of LTE service area or FOMA service area. You might not be able to operate this mobile phone even when you are in a place with a fine view such as on upper floors of a high-rise building or apartment. Note that you may experience interruption of calls even when the four-bar antenna mark is displayed indicating a strong radio wave and you are not moving.
- Since this mobile phone uses radio waves as the medium of telecommunication, calls may be tapped by a third party. However, the LTE and W-CDMA systems automatically support tapping prevention, so your conversation will be incomprehensible to the third party, because it is recognized as mere noise.
- The mobile phones change your voice into digital signals and send them to the other party. In places where the radio waves are weak, the digital signals may not be converted correctly, and in such a case, the voice may sound different from the actual one.
- Although the display was created using highly advanced technology, it is possible that some pixels might not light, or that some pixels light continuously. Please be aware that this is a characteristic of the display, and does not indicate a malfunction.
- You are advised to separately note information (such as phonebook, schedule, memos, record messages, voice memos) stored in this mobile phone or save the information to external memory devices such as microSD cards and PCs periodically. Note that we cannot be held responsible for the unlikely event of loss of the stored content due to a malfunction, repair, change of your model, or other mishandling of this mobile phone.
- You can use only docomo nano UIM cards in this mobile phone. If you have a docomo mini UIM card, docomo UIM card, or FOMA card, take it to a docomo Shop to have it replaced.
- Note that we do not guarantee operation of commercially available optional items.
- As with PC applications, some applications or sites you have installed or accessed in this mobile phone may pose problems: unstable operation of your mobile phone, unauthorized distribution and use of your location and personal information stored in the mobile phone. Therefore, you need to thoroughly check the source and behaviors of applications or sites before use.
- When the available space on the microSD card or this mobile phone is insufficient, apps in use may not work properly. In this case, delete unnecessary saved data.
- Providers other than sp-mode, mopera U and business mopera Internet are not supported.
- Public mode (drive mode) is not available for this mobile phone.
- Operation sounds such as shutter sound of the camera, etc. are emitted from this mobile phone even in Silent mode in which phone ringtone, touch tones and notification ringtone are muted.
- This mobile phone is designed to perform communication automatically for some features such as data synchronization, check for the latest software version and maintaining a connection with the server. Communication of a massive amount of data such as application download and video watching will incur expensive packet communication fees, so we strongly recommend subscription to the packet pack/flat-rate packet service.
- Your use of certain applications and services might incur packet communication fees, even when using Wi-Fi communication.
- Subscription to the packet pack/flat-rate packet services is strongly recommended to use tethering.
- Software on this mobile phone can be updated to up-to-date status. (See page 142)
- See page 110 for details on software version of this mobile phone.
- Keep the mobile phone secure in case it is lost by setting the Screen lock. (See page 100)
- If you lose the mobile phone, change the passwords for all accounts, such as social networking service, using a computer, to prevent others from accessing them.
- Follow the on-screen instructions if a user agreement is displayed.
- Apps and their service contents are subject to change without prior notice.
- For details on usage fees etc., refer to the DOCOMO website.

Precautions (ALWAYS FOLLOW THESE DIRECTIONS)

- Before using this mobile phone, read these safety precautions carefully so that you can use it correctly.
- Be sure to observe these safety precautions to prevent you or those around you from inflicting injury and to avoid unnecessary damage to property.
- The symbols below indicate the levels of danger or damage that can be caused if the particular precautions are not observed and equipment is not used properly.







	Danger	This symbol indicates that incorrect handling will almost certainly cause death or serious injury (*1).
	Warning	This symbol indicates that incorrect handling poses a risk of causing death or serious injury (*1).
	Caution	This symbol indicates that incorrect handling poses a risk of causing a slight injury (*2) or damage to the product or property (*3).

*1 serious injury: Indicates an injury that leaves the injured with complications including loss of sight, injuries, burns (high and low temperature), electrocution, broken bones, addiction, etc., and that requires hospitalization or long term hospital visits for treatment.

*2 slight injury: Indicates injuries, burns (high and low temperature), electrocution, etc. that do not require hospitalization or long term hospital visits for treatment.

*3 damage to the product or property: Indicates consequential damage relating to dwellings, household goods, domestic animals, pets, etc.

■ The following symbols show specific directions:

	Denotes actions prohibited to do.
Don't	
	Denotes not to disassemble the mobile phone.
Do not disassemble	
	Denotes not to use where the equipment may get wet, and avoid get it wet.
Avoid Water	
	Denotes not to touch with wet hands.
Not wet hands	
	Denotes mandatory instructions (matters that must be complied with).
Do	
	Denotes to pull the power plug out of an outlet.
Pull the power plug out	

■ "Precautions" are divided into the following seven sections:

General precautions for this mobile phone, batteries, adapters, desktop holder, and docomo nano UIM card.....	P.5
Precautions for this mobile phone.....	P.7
Precautions for batteries.....	P.9
Precautions for adapters and desktop holder.....	P.10
Precautions for docomo nano UIM card.....	P.12
Notes on using near electronic medical equipment.....	P.12
List of materials used.....	P.13

General precautions for this mobile phone, batteries, adapters, charging cup, and Nano SIM card

Danger



Don't

Do not use, store, or leave this mobile phone or its accessories in places with a high temperature or where heat can be easily trapped (such as near fire, near heating appliances, inside a kotatsu, under a comforter, or near other furniture with heating elements, in places exposed to direct sunlight, or in cars heated by the sun).
Fire, burns, injury or electric shock may result.



Don't

Do not place this mobile phone or its accessories inside cooking appliances such as microwave ovens or IH cooking heater, or high-pressure containers such as pressure vessel.
Fire, burns, injury or electric shock may result.



Don't

Do not pour sand, soil or mud on this mobile phone or place this mobile phone directly on sand, soil or mud. Avoid touching this mobile phone with a hand covered with sand, etc.
Fire, burns, injury or electric shock may result.
Refer to the following waterproof/dust-proof performance.
⇒ See page 19 "Waterproof/Dust-proof Performance".



Don't

Do not charge the battery in wet conditions with liquid such as water (drinking water, sweat, seawater, pet urine etc.)
Fire, burns, injury or electric shock may result.
Refer to the following waterproof performance.
⇒ See page 19 "Waterproof/Dust-proof Performance".



Don't

Do not apply strong pressure to this mobile phone or bend it. Be especially careful when carrying it inside the pockets of your clothing not to hit it against objects or get it caught between objects.

This can cause fire, burns, injuries, etc., due to ignition, rupturing, overheating, and leakage from the battery.

※ Examples of things you should be careful of

- Sitting or squatting while this mobile phone is in the pocket of trousers or a skirt
- Getting caught in car doors and other doors while in a jacket or coat pocket
- Getting pressed down on while on a soft surface such as a sofa, bed, or mattress, or while on a floor



Do not disassemble

Do not attempt to disassemble or remodel this mobile phone or its accessories.

Fire, burns, injury or electric shock may result.



Avoid Water

Do not allow this mobile phone or its accessories to get wet either from liquids such as water (drinking water, sweat, seawater, pet urine etc.).

Fire, burns, injury or electric shock may result.
Refer to the following waterproof performance.

⇒ See page 19 "Waterproof/Dust-proof Performance".



Avoid Water

Do not allow liquids such as water (drinking water, sweat, seawater, pet urine etc.) to seep in the charging terminal or connector terminal.

Fire, burns, injury or electric shock may result.
Refer to the following waterproof performance.

⇒ See page 19 "Waterproof/Dust-proof Performance".



Do

Use the optional items specified by NTT DOCOMO, INC.

Fire, burns, injury or electric shock may result.



Warning



Don't

Do not subject this mobile phone or accessories to severe force, shocks or, vibration for example by dropping, stepping on, or throwing them.

Fire, burns, injury or electric shock may result.



Don't

Do not allow electrically conductive foreign objects (such as metal pieces or pencil leads) to come into contact with this mobile phone's charging terminal or connector terminal, or allow dust to enter these terminals.

Fire, burns, injury or electric shock may result.



Don't

Do not cover or wrap this mobile phone or its accessories with a cushion, etc. while it is being used or recharged.

Fire or burns may result.



Do

If charging is not completed after the specified charging time, stop charging.

Overcharging the battery may cause fire, burns or injury.



Do

Before entering a gas station or other places where flammable gases or dust are generated, be absolutely sure to turn off this mobile phone and stop charging if it is being charged.

Using Osaifu-Keitai with this mobile phone at the place where there is a possibility of flammable gases being generated may cause explosion or fire.

Use the Osaifu-Keitai with this mobile phone turned off when you are near a gas station. (When Osaifu-Keitai is lock, release the lock, and then turn off the power.)



Do

If odor, abnormal noise, smoke generation, overheat, discoloration, or deformation is detected during use, battery charge, or storage, immediately follow the instructions below:

- Pull the power plug out of the outlet or accessory socket.
- Turn off the power of this mobile phone.
- Remove the battery pack from this mobile phone.

Failure to follow the above instructions may cause fire, burns, injury or electric shock.



Caution



Don't

Do not use damaged mobile phone.

Fire, burns or injury may result.



Don't

Do not place this mobile phone or accessories on unstable locations such as wobbly tables or slanted locations. Especially note while vibrator is set.

They may fall off and cause injury.



Don't

Do not use or store in humid or dusty places, or in high temperature environments.

Fire, burns, or electric shock may result.

Refer to the following waterproof/dust-proof performance.

⇒ See page 19 "Waterproof/Dust-proof Performance".



Don't

Children using this mobile phone should be instructed in proper operation by parent's. Make sure they use the product correctly.

Otherwise, injury may result.



Don't

Keep out of the reach of babies and infants.

Accidental swallowing, injury or electric shock may result.



Do

Take care that the temperature rises when this mobile phone is used for a long time or is being charged. Be careful to avoid unintentional and prolonged contact with this mobile phone, which may occur if you fall asleep, for example.

If you use Apps, have a call, perform data communication, watch TV programs, play moving pictures and so on for a prolonged period of time, or when this mobile phone is being charged, the temperature of this mobile phone, battery pack or adapter may rise. If you keep direct contact with high-temperature parts, redness, itching, a rash or low-temperature skin burns may result depending on the state of your physical condition or constitution.

Precautions for this mobile phone

Danger



Don't

Do not throw this mobile phone into fire or apply heat.

Otherwise, the battery pack may ignite, burst or overheat and its electrolyte may leak, causing fire, burns or injury.



Don't

Do not use excessive force, for example by piercing it with nails (or any sharp objects), hitting it with a hammer (or any hard objects), or stepping on it.

Otherwise, the battery pack may ignite, burst or overheat and its electrolyte may leak, causing fire, burns or injury.



Do

If the substance inside this mobile phone gets into your eyes or mouth, rinse with clean water and receive medical care from a doctor immediately.

The substance inside this mobile phone may cause loss of sight or poor health.

Warning



Don't

Do not light the light close to eyes. Especially when shooting small children, be sure to stay at least 1 m away from them.

Doing so can damage eyesight. Also, accidents such as injury might occur if someone is startled or dazzled by the light.



Don't

Do not turn on the light toward car drivers.

It disturbs driving, and accidents may result.



Don't

Do not look at a flashing screen for a prolonged period.

Convulsion or loss of consciousness may result.



Don't

Do not allow liquids such as water (drinking water, sweat, seawater, pet urine etc.), or foreign materials such as metal pieces or flammable materials to get into the docomo nano UIM card or microSD card insert part of this mobile phone. Do not mistake the insertion location and direction of the docomo Nano SIM card or microSD memory card.

Fire, burns, injury or electric shock may result.



Don't

Do not expose the camera lens to direct sunlight for a prolonged period.

The light-gathering capabilities of the lens may cause fire, burns, injury, etc.



Do

Turn off this mobile phone or set Airplane mode, when you board an airplane.

For use restriction on an airplane, make sure that you comply with their regulations.

Engaging in any prohibited acts such as using this mobile phone on an airplane is punishable by law.



Do

For use in hospitals, make sure that you comply with their regulations.

Turn off this mobile phone in places where use is prohibited. Otherwise, the electronic devices and electronic medical equipment may be adversely affected.



Do

When you talk by setting handsfree, ringtone is sounding at loud volume or during standby, keep this mobile phone away from your ear. And, when connecting the earphone/microphone, etc. to this mobile phone and play a game, video or music, etc. adjust the volume moderately.

This mobile phone can output loud sounds when set to handsfree for talking. Even when on standby, the ringtone or alarm tones may sound suddenly. Listening to loud sounds over long periods can lead to ear problems such as hearing difficulties. Furthermore, if the volume is too loud, you may have difficulty hearing ambient sounds, which in turn can lead to accidents.



Do

For those with weak heart conditions, the vibrator and ring volume must be adjusted carefully.

Otherwise, the functions may adversely affect your heart.



Do

If you are using an electronic medical device or other type of device, check with its manufacturer or vendor as to whether it will be affected by the signals from this mobile phone.

This mobile phone may adversely affect the device.



Do

Turn off this mobile phone when near electronic devices using high-precision control or weak signals.

This mobile phone may cause the electronic devices to malfunction and have other adverse effects.

※Electronic devices that may be affected:

Hearing aids, implanted cardiac pacemakers, implanted defibrillators, other electronic medical equipment and other automatically controlled devices. If you use an implanted cardiac pacemaker, implanted defibrillator or any other electronic medical equipment, consult the manufacturer or retailer of the device for advice regarding possible effects from the radio waves.



Do

If the display part or camera lens is broken, be careful about broken acrylic resin or the exposed interior of this mobile phone.

If you mistakenly touch broken or exposed parts, it may cause burns, injuries or electric shocks, etc.



Caution



Don't

Do not swing around this mobile phone by its strap or other parts.

You may hit yourself, others, or the surrounding objects, possibly causing injury or other accidents.



Don't

When using the motion sensor, ensure that you check around you for safety, securely take hold of your mobile phone, and do not swing more than necessitated.

Otherwise, injury or other accidents may result.



Don't

If the display part is accidentally broken and such as internal substance leaks out, do not make the substance contact with your skin of face or hands, clothes, etc.

Loss of sight or skin problems may result.

If the substance gets into your eyes or mouth or comes into contact with your skin or clothes, rinse with clean water immediately.

And if it gets into your eyes or mouth, rinse with clean water and seek medical care immediately.



Do

Before using this mobile phone inside a car, check with its manufacturer or dealer whether the signals from this mobile phone will have any adverse effects.

In some vehicle models, the signals may adversely affect the electronic devices inside the vehicle. Such cases are rare. However, if this happens, stop using this mobile phone immediately.



Do

If you develop skin problems, stop using this mobile phone immediately, and then seek medical attention. Itching, rash or eczema may be caused depending on your physical conditions or predisposition.

Refer to the following material of each part.
⇒ See page 13 "List of materials used".



Do

Be careful not to pinch your finger and other body parts when you close or open this mobile phone.

Otherwise, injury may result.



Do

Magnets are used in the speakers and receiver parts of this mobile phone, so ensure that sharp metal objects (box cutter blades, staples, needles, etc.) are not attached.

Objects of this sort can cause injury.



Do

View the display in a sufficiently light place keeping a certain distance from your eyes.

Watching the display in the dark or watching too close may cause reduced visual acuity, etc.

Precautions for batteries



Danger



Don't

Do not allow metal pieces (neckless or hairpins, etc.) or electrically conductive foreign objects to come in contact with this mobile phone's connector terminal. Also do not carry or store the battery pack together with such items. Otherwise, the battery pack may ignite, burst or overheat and its electrolyte may leak, causing fire, burns or injury.



Don't

If the battery pack cannot be attached easily, do not force it into place. Furthermore, if you have difficulty removing the battery pack from this mobile phone, do not try to forcefully remove it.

Otherwise, the battery pack may ignite, burst or overheat and its electrolyte may leak, causing fire, burns or injury.
Refer to the following for inserting and removing the battery pack.
⇒ See page 37 "Inserting/Removing of Battery Pack".



Don't

Do not throw the battery into fire or apply heat.

Otherwise, the battery pack may ignite, burst or overheat and its electrolyte may leak, causing fire, burns or injury.



Don't

Do not use excessive force, for example by piercing it with nails (or any sharp objects), hitting it with a hammer (or any hard objects), or stepping on it.

Otherwise, the battery pack may ignite, burst or overheat and its electrolyte may leak, causing fire, burns or injury.



Do

When attaching the battery pack in this mobile phone, check that it is facing the right direction.

If the battery pack is inserted in the wrong direction, the battery pack may ignite, burst or overheat and its electrolyte may leak, causing fire, burns or injury.

Refer to the following for inserting the battery pack.

⇒ See page 37 "Inserting/Removing of Battery Pack".



Do

If the internal substance of the battery pack gets into your eyes, do not rub them. Flush your eyes with clean water and seek medical attention immediately.
The internal substance of the battery pack may cause loss of sight.



Warning



Don't

Stop using this mobile phone if it exhibits as odors, overheating, discoloration, or deformation.
Otherwise, the battery pack may ignite, burst or overheat and its electrolyte may leak, causing fire, burns or injury.



Do

Immediately stop using this mobile phone and keep it away from fire if there is leakage of substances, etc., from inside the battery pack or it emits an odor.
The leaked battery fluid may ignite, causing fire or burst.



Do

Be careful that your pets do not bite into the battery pack.
Otherwise, the battery pack may ignite, burst or overheat and its electrolyte may leak, causing fire, burns or injury.



Caution



Don't

If the internal substance of the battery pack has leaked out, do not allow it to come into contact with the skin on your face, hands or any other part of your body.
Loss of sight or skin problems may result. If the substance gets into your eyes or mouth or comes into contact with your skin or clothes, rinse with clean water immediately. And if it gets into your eyes or mouth, rinse with clean water and seek medical care immediately.



Don't

Do not dispose of the depleted battery with other waste.
Ignition of the battery may cause fire, burns or injury. Environmental damage may also be caused. After insulating the battery terminals with tape, take the unneeded battery to a handling counter such as a docomo Shop or dispose of it in accordance with local waste disposal regulations.



Don't

Do not use or attempt to charge a wet battery.
Otherwise, the battery pack may ignite, burst or overheat and its electrolyte may leak, causing fire, burns or injury.

Precautions for adapters and Charging cup



Warning



Don't

Do not use the adapter if its cord has been damaged.
Fire, burns or electric shock may result.



Don't

Do not use the adapter and desktop holder in humid places such as a bathroom.
Fire, burns or electric shock may result.



Don't

The DC adapter is for use only in a negative (-) grounded vehicle. Do not use it in a positive (+) grounded vehicle.
Fire, burns or electric shock may result.



Don't

If a thunderstorm is nearby, do not touch the adapter.
Otherwise, you may receive an electric shock.



Don't

Never short-circuit the charging terminal when the adapter is plugged into the power outlet or accessory socket. Also, never touch the charging terminal with fingers or other bare skin.

Fire, burns or electric shock may result.



Don't

Do not place heavy objects on the cord of the adapter and do not use unnecessary force, for example by pulling the cord.

Fire, burns or electric shock may result.



Don't

When plugging the AC adapter into the power outlet, or when unplugging it from the outlet, do not allow metal straps or other metal objects to come in contact with it.

Fire, burns or electric shock may result.



Don't

Do not use a travel converter with the AC adapter.

Ignition, overheating or electric shock may result.



Don't

Do not apply excessive force to the connecting part with this mobile phone connected to the adapter.

Fire, burns, injury or electric shock may result.



Not wet hands

Do not touch the adapter cord, charging terminal, power plug, or desktop holder with wet hands.

Fire, burns or electric shock may result.



Do

Use the adapter with the specified power supply and voltage.

When charging this mobile phone overseas, use the AC adapter available for use overseas to charge this mobile phone.

Using the adapter with an incorrect power supply or voltage may cause fire, burns or electric shocks.

AC adapter: 100 V AC

[Connect only to household AC outlet]

AC adapter available for use overseas: 100 V to 240 V AC

[Connect only to household AC outlet]

DC adapter: 12/24 V DC [For negative (-) grounded vehicles only]



Do

If the DC adapter's fuse blows, replace it only with the specified fuse.

Use of any fuse other than the specified one may cause fire, burns or electric shock.

For the specified fuse, refer to each instruction manual.



Do

Keep the power plugs dust-free.

Use of a power plug with dust on it may cause fire, burns or electric shock.



Do

When plugging the adapter into the power outlet or accessory socket, plug it in securely.

Failure to plug it in securely may cause fire, burns or electric shock.



Do

When unplugging the power plug from the power outlet or accessory socket, do not use unnecessary force, for example by pulling the adapter cord. Take hold of the adapter to unplug it.

Pulling the adapter cord may cause damage to it. Fire, burns or electric shock may result.



Do

When inserting or pulling the adapter into or out of this mobile phone, do not use unnecessary force, for example by pulling the cord. Insert or pull out the adapter straight into or out from the connector terminal.

Failure to insert or pulling the adapter correctly may cause fire, burns, injury or electric shock.



Do

Immediately discontinue use if the charging terminal is bent or deformed, and do not use again.

A short-circuit of the charging terminal may cause fire, burns, injury or electric shock.



Pull the power plug out

When you do not intend to use the adapter, disconnect the power plug of the adapter from the power outlet or accessory socket.

Leaving the plug plugged in may cause fire, burns or electric shock.



Pull the power plug out

If liquids such as water (drinking water, sweat, seawater, pet urine etc.) get in the adapter, immediately unplug the power cord from the outlet or accessory socket.

Fire, burns or electric shock may result.



Pull the power plug out

Before cleaning, pull the power plug out of the outlet or accessory socket.

Otherwise, fire, burns or electric shock may result.



Caution



Don't

Do not touch the adapter for a long time when the adapter is plugged into the power outlet or accessory socket.

Otherwise, burns may result.

Precautions for Nano SIM card



Caution



Do

Be careful not to scratch your finger and other body parts at the cut surface when handling the docomo nano UIM card.

Otherwise, injury may result.

Notes on using near electronic medical equipment



Warning



Do

If you use electronic medical equipment such as an implanted cardiac pacemaker or implanted defibrillator, use this mobile phone 15 cm or more away from an implanted cardiac pacemaker or implanted defibrillator.

This mobile phone's signals may adversely affect the operation of electronic medical equipment.



Do

Patients using electronic medical equipment other than implanted cardiac pacemakers or implanted defibrillators (outside medical establishments for treatment at home, etc.) should check the influence of radio waves upon the equipment by consulting its manufacturer.

This mobile phone's signals may adversely affect the operation of electronic medical equipment.



Do

If this mobile phone has a chance of coming within 15 cm of other persons, such as when you are in an area where you cannot move freely, switch this mobile phone to a state in which it does not emit radio waves (such as by switching it to Airplane mode or turning the power off).

A person nearby might be using an electronic medical device such as an implanted cardiac pacemaker or implanted defibrillator. This mobile phone's signals may adversely affect the operation of electronic medical equipment.



Do

When using this mobile phone within a medical institution, follow the instructions of that medical institution.

This mobile phone's signals may adversely affect the operation of electronic medical equipment.

Handling Precautions

General notes

■ **The P-01K is waterproof/dust-proof, however, do not allow liquids such as water (drinking water, sweat, seawater, pet urine etc.) to seep or foreign matter such as dust to get in the inside of this mobile phone, or do not allow accessories and optional items to get wet or dusty.**

The battery, adapter, desktop holder, and docomo nano UIM card are not waterproof/dust-proofed. Do not use them in environments high in humidity, such as in bathrooms, and do not allow them to get wet from rain. Furthermore, if carrying them against your body, they may become moist due to perspiration and the internal parts may become corroded, causing malfunction. If the parts are found to have been damaged due to exposure to liquids, repairs will not be covered by the guarantee. For repairs, refer to "Malfunction, Repair" on the back cover or contact a repair counter specified by DOCOMO.

■ **Use a dry soft cloth such as the one for cleaning glasses to clean the equipment.**

- The display may be scratched if it is rubbed hard with a dry cloth.
- Stains may result from droplets of water or dirt if they are left on the display.
- Do not use alcohol, thinner, benzene, detergent or other solvents for cleaning, otherwise the printing may be removed or discoloration may result.

■ **Occasionally clean the terminals to make sure they are clean when used.**

If the terminals, etc., are used while dirty, correct operation may not be possible. Take care not to damage the terminals when cleaning them.

■ **Do not place this mobile phone near an air conditioner outlets.**

Condensation may form due to rapid changes in temperature, and this may corrode internal parts and cause malfunction.

■ **Do not apply excessive force onto this mobile phone and battery pack.**

If you put this mobile phone in a bag along with many other articles or sit with this mobile phone in a clothes pocket, the display, internal circuitry and the battery pack could be damaged or malfunction.

Also, if an external device is left connected to the connector terminal, the connector could be damaged, or malfunction.

■ **Use only optional items specified by NTT docomo.**

Using other than specified optional items can cause damage or malfunction.

■ **Carefully read each instruction manual attached to optional items that support this mobile phone.**

■ **Do not drop or subject it to strong impacts.**

Malfunction or damage may result.

Notes on handling this mobile phone

■ **Do not press strongly on the display or scratch it.**

Doing so might cause damage to the part, resulting in trouble or malfunction.

■ **Avoid using in extremely high or low temperatures.**

This mobile phone should be used within a temperature range of 5° C to 35° C and a humidity range of 45% to 85%.

■ **If this mobile phone is operated near a land-line phone, television set, radio or other devices in use, it may adversely affect the devices.**

Operate this mobile phone as far away from these devices as possible.

■ **Data you have registered in this mobile phone should be backed up to a microSD card, computer, or to the cloud, or a note should be taken of the data.**

We take no responsibility for any loss of the stored data items.

■ **Do not insert an external device to the connector terminal at a slant when connecting, and do not pull it out when it is inserted.**

Malfunction or damage may result.

■ **Make sure that nothing, such as a strap, gets caught between the parts of this mobile phone when you close it.**

Otherwise, malfunction or damage may result.

■ **This mobile phone becomes warm during use or charging but this is normal. Use this mobile phone as it is.**

■ **Do not leave the lens of the camera in places exposed to direct sunlight.**

Pixels may be discolored or burns may result.

■ **When using this mobile phone, ensure that you shut the cover for the connector terminal.**

Liquids such as water (drinking water, sweat, seawater, pet urine etc.) or foreign matter such as dust might enter into this mobile phone, causing malfunction.

■ **Do not use this mobile phone with the back cover left removed.**

The battery pack might come out, or malfunction or damage may result.

■ **Do not apply an excessively thick sticker onto the surfaces of the display or keys.**

If the label or sticker gets caught in this mobile phone when you close or open this mobile phone, malfunction, damage or problems with operation may be caused.

■ **While you are using the microSD card, never take it off or turn off the power of this mobile phone.**

Data may be erased or malfunction may result.

■ **Do not place magnetic cards or magnetic substances near this mobile phone or between phone parts.**

Magnetic data on cash cards, credit cards, telephone cards and floppy disks, etc. may be deleted. Problems with operation may result if items with strong magnetic fields are brought close to this mobile phone.

Notes on handling batteries

■ **Charge the battery in a place with an appropriate ambient temperature of 5° C to 35° C.**

■ **The usable time of the battery differs depending on the usage environment or its remaining life.**

■ **The battery pack is considered a consumable and is therefore not covered by the guarantee.**

Depending on how the battery pack is used, there may be some swelling of the battery pack as it approaches the end of its service life.

It is time to replace the battery pack if the duration it can be used reduces noticeably even after fully recharging it or if it swells. For battery pack replacement, refer to "Malfunction, Repair" on the back cover or contact a repair counter specified by DOCOMO.

■ **When storing the battery pack, do not store in the following conditions as this can reduce the performance and life of the battery pack.**

- Storage in a fully charged state (the state immediately after charging is completed)
- Storage with no battery power left (the state you cannot turn on the power of this mobile phone due to battery drain)

The optimal charge level for storage are the battery icon to show two bars, or about 40%.

- **Check the description on the label of the battery pack for the type of battery.**

Description: Li-ion 00

Battery type: Lithium-ion battery

Notes on handling adapters and desktop holder

- **Charge the battery in a place with an appropriate ambient temperature of 5° C to 35° C.**
- **Charge the battery where:**
 - There is very little humidity, vibration, and dust.
 - There are no land-line phones, television sets or radios nearby.
- **While you are charging, the adapter may become warm. This is not a malfunction, so you can keep on using.**
- **Do not use the DC adapter for charging the battery when the car engine is not running.**

The car battery could go flat.
- **When using the power outlet having the disengaging prevention mechanism, observe the instructions given in that instruction manual.**
- **Do not give a strong shock. Also, do not deform the charging terminal.**

Malfunction may result.

Notes on handling the docomo nano UIM card

- **Do not apply more force than is necessary when installing or removing the docomo nano UIM card.**
- **The warranty does not cover damage caused by inserting the docomo nano UIM card into some other types of IC card reader/writer.**
- **Occasionally clean the IC parts to make sure they are clean when used.**

If the IC parts are used while dirty, correct operation may not be possible.
- **Use a dry soft cloth such as the one for cleaning glasses to clean the equipment.**

- **Data you have registered in the docomo nano UIM card should be backed up to a microSD card, computer, or to the cloud, or a note should be taken of the data.**

We take no responsibility for any loss of the stored data items.

- **For the environmental protection, bring unneeded docomo nano UIM card to a handling counter such as a docomo Shop.**
- **Do not damage, carelessly touch, or short-circuit the IC.**

Data might be lost or malfunction may result.
- **Do not drop the docomo nano UIM card or subject it to strong impacts.**

Malfunction may result.
- **Do not bend the docomo nano UIM card or place something heavy on it.**

Malfunction may result.
- **Into this mobile phone, do not insert the docomo nano UIM card with a label or sticker pasted.**

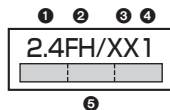
Malfunction may result.

Notes on using Bluetooth® function

- **This mobile phone supports the security function that meets the Bluetooth Specification, to secure Bluetooth communication. However, the security may not be sufficient depending on the settings. Take care of the security for communication when using the Bluetooth function.**
- **Note that even if any leak of data or information occurs while making connection using the Bluetooth function, we take no responsibility.**

Radio frequencies

The radio frequencies for the Bluetooth function of this mobile phone are as follows:



- 1: Indicates radio facilities that use 2400 MHz frequencies.
- 2: FH: Indicates modulation is the FH-SS system.
- 3: XX: Indicates modulation is of a system other than the above.
- 4: 1: Indicates that an estimated interference distance is 10 meters or less.
- 5: : Indicates that all radio frequencies 2402 MHz through 2480 MHz are used, and that the frequencies for mobile object identifiers shall not be avoided.

To use on airplane, confirm with airline company in advance.

Use of Bluetooth may be prohibited in some countries. Please confirm laws and regulations applicable in the country/region before use.

Cautions on Using Bluetooth Devices

Bluetooth operates at radio frequencies assigned to the in-house radio stations for mobile object identifiers that have to be licensed and are used in production lines of a factory, specific unlicensed low power radio stations, and amateur radio stations (hereafter, referred to “another radio station”) in addition to scientific, medical, industrial devices, or home electric appliances such as microwave ovens.

1. Before using this mobile phone, make sure that “another radio station” is not operating nearby.
2. If radio interference between this mobile phone and “another radio station” occurs, move immediately to another place or turn off power to avoid interference.
3. For further details, contact “docomo Information Center” on the last page.

Notes on handling Wireless LAN (WLAN)

Wireless LAN (WLAN) has an advantage of any-place LAN connectivity within the radio wave range as it establishes communication via radio wave. At the same time, however, you have a risk that malicious third party may break into the network and steal communication contents without security measures. It is recommended to take security measures at your discretion and responsibility.

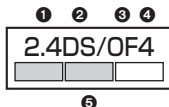
Wireless LAN


Do not use Wireless LAN in a place where magnetized by electric product, AV, OA equipment, etc. or where electromagnetic wave is generated.

- If magnetism or electrostatic noise affects this mobile phone, noise may be increased or communication may not be available (especially when using microwave oven, it may affect this mobile phone).
- Using near TV or radio may cause poor reception or TV screen may be disturbed.
- When multiple wireless LAN access points exist near your mobile phone and they use the same channel, search may not be performed correctly.

Radio frequencies

The radio frequencies for WLAN devices are written on battery compartment of this mobile phone. Label description are as follows:



- ① 2.4: Indicates radio facilities that use 2400 MHz frequencies.
- ② DS: Indicates modulation is the DS-SS system.
- ③ OF: Indicates modulation is the OFDM system.
- ④ 4: Indicates that an estimated interference distance is 40 meters or less.
- ⑤ : Indicates that radio frequencies 2412 MHz through 2462 MHz are used, and that the frequencies for mobile object identifiers shall be avoided.

The Wi-Fi LAN channels available on this mobile phone are 1 to 11. You will be unable to connect to access points using other channels.

Available channels vary depending on countries.

To use on airplane, confirm with airline company in advance.

Use of wireless LAN may be prohibited in some countries. Please confirm laws and regulations applicable in the country/region before use.

Cautions on Using 2.4 GHz Devices

The bandwidth of the WLAN devices is assigned to the in-plant radio stations for identification of mobile objects used in production lines of a factory (a license is required), specified low power radio stations (a license is not required), or amateur radio stations (a license is required), in addition to home electric appliances such as a microwave oven, industrial/scientific/medical devices.

1. Before using this device, confirm that in-plant radio stations for identification of mobile objects, specified low power radio stations or amateur radio stations are not in operation in your neighborhood.
2. If this device generates harmful radio wave interference against in-plant radio stations for identification of mobile objects, immediately change the radio frequency or stop using wireless LAN function, and contact “docomo Information Center” on the last page, then consult about treatment for prevention of the interference (for example, installation of partitions etc.).
3. If this device generates harmful radio wave interference against in-plant radio stations for identification of mobile objects or amateur radio stations, or if any trouble occurs, contact “docomo Information Center” on the last page.

Notes on handling the FeliCa and NFC reader/writer

- FeliCa and NFC reader/writer or P2P function of the terminal has the type designation of Inductive Reader/Writer Communication Equipment stipulated in the Radio Law.
- They use 13.56 MHz frequency band. When the other FeliCa or NFC reader/writer, P2P function is used in the surroundings, keep the terminal away sufficiently from them. Before using, confirm that there are no radio stations using the same frequency band nearby.
- To use on an airplane, confirm with airline company in advance. Use of the FeliCa and NFC reader/writer may be prohibited in some countries. Please confirm laws and regulations applicable in the country/region before use.

Caution

- **Do not use this mobile phone if it has been modified. Using this mobile phone if it has been modified infringes the Radio Law/ Telecommunications Business Law.**

This mobile phone is in compliance with the rules for the technical regulations of specified radio equipment under the Radio Law of Japan, as well as to those of terminal devices under the Telecommunications Business Law of Japan, and bears a "technical conformity mark" on its nameplate as evidence of conformity. Unscrewing this mobile phone and modifying internal components void the technical regulations conformity certification. Do not use this mobile phone in this state, which infringes the Radio Law and Telecommunications Business Law.

- **Take special care not to operate this mobile phone while driving.**

Holding this mobile phone in your hand while driving is subject to a fine or other penalties. However, this does not apply in unavoidable circumstances when, for instance, responding to someone who is sick or injured or when maintaining public order.

- **The FeliCa and NFC reader/writer functions on this mobile phone have been authorized in compliance with the radio transmission standards in Japan. When you use them overseas, confirm laws and regulations applicable in the country/region before use.**

- **Do not make any unauthorized or unsanctioned changes to the basic software.**

Such changes will be construed as remodeling and, as a result, requests to repair faults may be denied.

Waterproof/Dust-proof Performance

Your P-01K is capable of IPX6 and IPX8 waterproof performance and IP6X dust-proof performance if the connector terminal cover and back cover are firmly closed and no clearance gap and float found in them.

You can operate this mobile phone in the rain, in your kitchen, and also around poolside.

In the Rain

- You can talk on the phone by holding the phone in the rain with your wet hand without umbrella. (Less than 20 mm/hour of rainfall, and your feet get wet by drops of rain rebounded off the ground)
- ※ When your hands are wet or water drops remain on this mobile phone, do not attach/remove the back cover, nor open/close the connector terminal cover.

Wash

- When this mobile phone gets dirty, you can slowly swing and wash it in a bowl filled with fresh water or tap water at an ambient temperature, or wash it by hand while running a slightly-weak water flow from a faucet.
- Wash this mobile phone with the back cover firmly attached and while you are pushing the cover of the connector terminal down.
- Do not use brushes, sponges, soaps, or detergents for washing.
- After rinsing off this mobile phone in water, wipe its surfaces thoroughly using a dry cloth, drain off the water (see page 23), and allow this mobile phone to dry out naturally.



Soap/detergent

On Leisure

- Do not soak or drop this mobile phone into a pool or the sea nor operate it in water.
- If pool water or seawater splashes on this mobile phone, wash the mobile phone following the prescribed method (see page 20).



Sea/pool

In the Kitchen

- Do not spray liquids other than fresh water or tap water at room temperature onto this mobile phone or soak the mobile phone in them.
- Do not spray hot water or cold water onto this mobile phone or soak it in them.

Important Information before Use

- Before using this mobile phone, make sure that you attach the battery pack firmly after tightly closing the connector terminal cover. If there is any small particles (fine fibers, hair or grains of sand) between the covers and the phone, water or dust could find its way inside the phone. When attaching the back cover after closing the connector terminal cover, ensure that there is no particles or dirt on or around these parts (especially the packing).
- Ensure that the connector terminal cover and Battery Pack are closed tightly and that none of these covers are askew. If the covers are not closed tightly, water or dust could find its way inside this mobile phone.
- To keep the waterproof/dust-proof performance, we recommend replacing parts once every two years regardless of whether any irregularities are present. You are charged for replacement of parts. Take this mobile phone to a repair counter specified by DOCOMO.

Caution

■ About this mobile phone

- Do not wash this mobile phone with a washing machine or ultrasonic cleaner.
- Never charge the battery when it gets wet.
- Do not leave this mobile phone with drops of water remained on.
 - The connector terminal might be short-circuited.
 - Water might enter into the inside of this mobile phone through the keys or hinges. In cold districts, drops of water on this mobile phone might freeze, resulting in malfunction.

If this mobile phone gets wet, keep the back cover attached and the connector terminal cover closed, drain off the water (see page 23), and immediately wipe off the moisture remaining on this mobile phone with a clean dry cloth.

- Do not drop this mobile phone nor give a shock to it.

The deterioration of the waterproof/dust-proof performance might result depending on the damage.
- Do not soak this mobile phone in hot water, use in a sauna, nor expose to hot wind currents such as those of a dryer.
- This mobile phone does not float on water.
- Do not directly expose to the strong water flows that exceed the standard (see page 19) or submerge the mobile phone in water.
- Do not directly place this mobile phone on sandy beaches.
 - Sands enter into the holes on the microphone, earpiece, or speakers may reduce the volume.
 - If you operate this mobile phone with water drops or sands adhered to, sound might be deteriorated.
 - Even the slightest sands entered from the connector terminal cover or back cover could cause water or dust to enter the inside of this mobile phone.

■ About the connector terminal cover and battery pack

- Do not open or close while wearing gloves.

Fine dirt might adhere to the contact surface of the packing.
- Be careful that no fibers adhere to the packing when you try to wipe off moisture with a clean dry cloth.
- Do not peel the packing off. Also do not insert something pointed at the head into the clearance of the connector terminal cover or battery pack.

The packing is damaged, resulting in water or dust to enter into this mobile phone.
- If the packing for the connector terminal cover or Battery Pack is damaged or deformed, replace them at a repair counter specified by DOCOMO.
- If the back cover is broken, replace it with new one.

Otherwise liquid such as water enters into the inside of this mobile phone through broken portions, and an electric shock or corrosion of the battery pack could result.
- When this mobile phone gets wet with the connector terminal cover or battery pack left open, water enters inside, and an electric shock or malfunction could be caused. Do not use it as is, but turn off the power, remove the battery pack, and then take it to a repair counter specified by DOCOMO.

■ About microphone, earpiece, air vent, and speakers

- Do not push pointed objects into the holes on microphone, earpiece, air vent, or speakers.
- Do not leave water drops adhered to them. Doing so may disable communications.

■ Others

- Accessories and optional items are not waterproof/dust-proofed. Do not use the desktop holder provided in a bathroom, shower room, kitchen, or lavatory where water is used, even if you do not connect to AC adapter.
- It is not that the waterproof performance is guaranteed in all given conditions of actual use. If the damage is found to be caused by your mishandling of this mobile phone as a result of our inspection, the guarantee is not supported.

Draining Water

- If you operate this mobile phone with water drops left adhered to it, the volume level from the speakers might be decreased or sound quality vary.
- Moisture may have entered inside through the clearance gap of the keys or hinges.

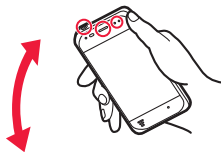
Follow the procedures described below to wipe moisture off this mobile phone:

- 1 Wipe completely moisture off the surface of this mobile phone with a clean dry cloth.**

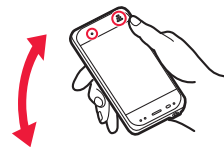


- 2 Securely take hold of this mobile phone, and firmly swing each surface at least 20 times until no moisture sprays off.**

<Draining from
earpiece and air vent>



<Draining from
microphone and speaker>

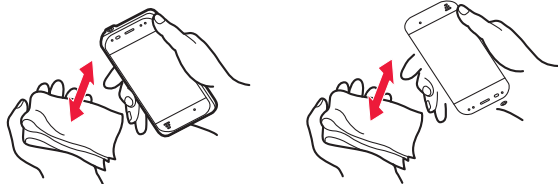


<Draining from
microphone>



3 Lightly push this mobile phone against a clean dry cloth, and wipe moisture off the clearance gap of the microphone, earpiece, air vent, speaker, keys, or hinges.

- Do not directly wipe moisture out of joint gap using a cotton swab, etc.



4 Fully drain moisture and then operate this mobile phone.

- Even when you follow the procedures for draining water as described above, moisture might remain in this mobile phone. Therefore, use this mobile phone after allowing it to dry out naturally. Also, take care to keep any objects you do not want to get wet away from this mobile phone since water may leak out from this mobile phone.

When Charging Battery

Accessories and optional items are not waterproofed/dust-proofed. Check the following before and after charging:

- Never charge the battery with this mobile phone left wet. If this mobile phone gets wet, drain and wipe off moisture with a clean dry cloth and then charge.
- When you charge the battery with the connector terminal cover open, firmly close it after charging. To prevent water or dust from entering inside through the connector terminal, you are advised to use the desktop holder provided for charging.
- Do not touch the AC adapter and desktop holder with your hands wet.
- Do not use the AC adapter and desktop holder in a bathroom, shower room, kitchen, and lavatory where water is used.

Getting Started

Confirming the included items

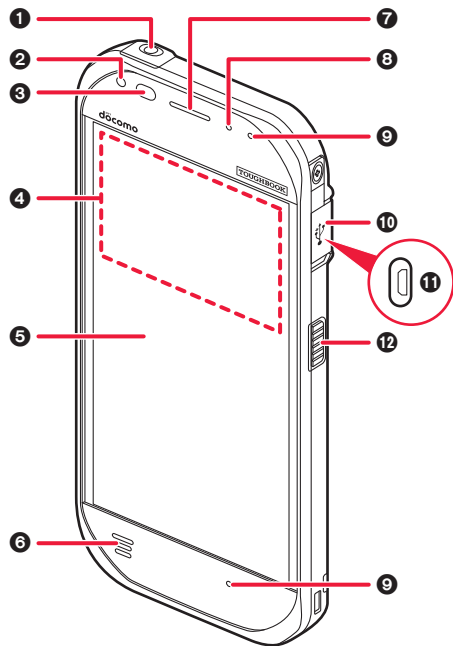
- P-01K Handset (With Warranty)
- Battery Pack P34
- Quick start Guide (Japanese version)
- Notes on usage, Safety/Handling precautions (Japanese version)

Optional items (option) compatible with this mobile phone can be viewed and purchased at the online docomo Shop.

(<https://www.mydocomo.com/onlineshop/options/index.html>) (In Japanese only)

Description of parts

Front view



① Headset jack

② Indicator

Orange, lit: Battery is charging

Green, lit: Battery charging is complete

Red, lit: Battery level is less than 15 % of a full charge

③ Ambient light sensor, proximity sensor

The ambient light sensor automatically adjusts the screen brightness.

The proximity sensor prevents accidental operations on the touch panel during phone calls.

④ NFC antenna (internal)

When using an NFC card or other NFC device, touch the card/device to this area of the unit.

⑤ Display (touch panel)

Can also be operated while using gloves (glove touch mode).

⑥ Speaker

⑦ Earpiece

⑧ Air vent

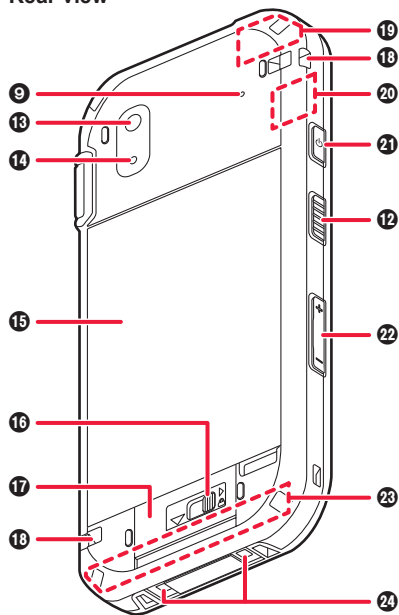
⑨ Microphone

⑩ Interface cover

⑪ micro USB port

⑫ Side button

Rear view

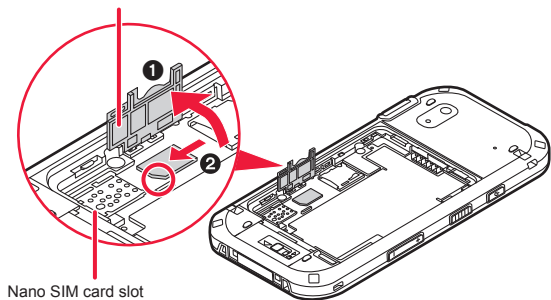


- 13 Rear camera
- 14 Photolight
- 15 Battery Pack
- 16 Cover latch lock
- 17 Cover latch
- 18 Strap hole
- 19 GPS antenna
- 20 Wi-Fi antenna/Bluetooth antenna
- 21 Power button
- 22 Volume buttons
- 23 Cellular antenna
- 24 Charging terminal

Installing SIM card

- 1 Open the SIM card / SD card cover (❶), and insert the SIM card into Nano SIM card slot (❷).

SIM card / SD card cover

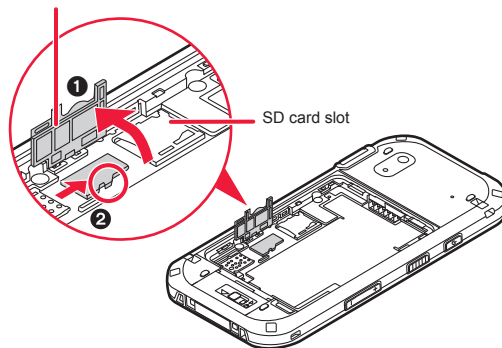


- 2 Insert the SIM card until it click.
- 3 Close the SIM card / SD card cover until it click.

Installing SD card

- 1 Open the SIM card / SD card cover (❶), and insert the SD card into SD card slot (❷).

SIM card / SD card cover

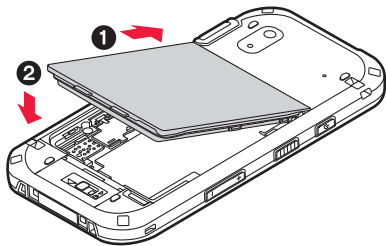


- 2 Insert the SD card until it click.
- 3 Close the SIM card / SD card cover until it click.

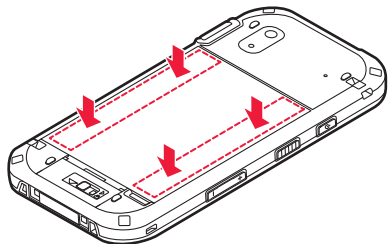
Removing and attaching the battery pack

Attaching the battery pack

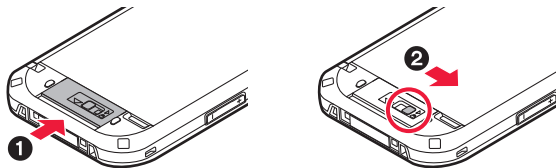
- 1 Insert the tabs on the battery cover into the corresponding slots in the battery chamber (1), and then lower the battery into place (2).



- 2 Press down firmly on the outside edges of the battery pack to seal it closed.

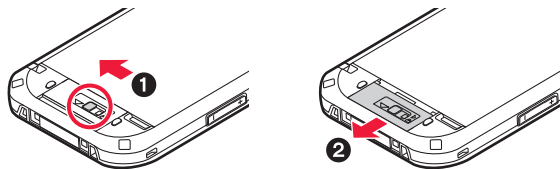


- 3 Close the cover latch (1) and lock it (2) by sliding the switch (circled in the illustration) toward .

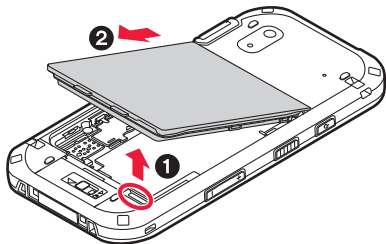


Removing the battery pack

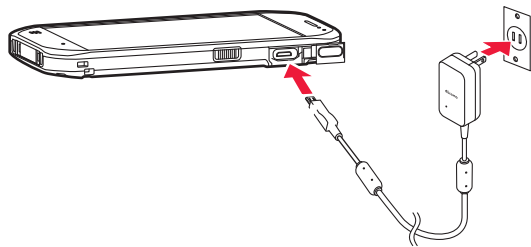
- 1 Unlock the cover latch by sliding the switch (circled in the illustration) away from  (1), and then open the cover latch by sliding it toward  (2).



- 2 Place your fingertip on the bottom right groove of the battery pack (circled in the illustration), lift it (1) and remove it (2).




Charging the battery




- 1** Face the USB mark of the USB connection cable upward, and connect the AC adaptor and the unit.
- 2** Plug the power plug of the AC adaptor into a power outlet.

Turning the unit on and off

Turning the unit on

- 1** Press and hold  (power button) on the top of the unit until the unit briefly vibrates.

Turning the unit off

- 1** Press and hold  until the power o is displayed.
- 2** Select the power off option

Appendix

Specific Absorption Rate (SAR) of Mobile Phones

This model P-01K mobile phone complies with Japanese technical regulations and international guidelines regarding exposure to radio waves.

This mobile phone was designed in observance of Japanese technical regulations regarding exposure to radio waves (*1) and limits to exposure to radio waves recommended by a set of equivalent international guidelines.

This set of international guidelines was set out by the International Commission on Non-Ionizing Radiation Protection (ICNIRP), which is in collaboration with the World Health Organization (WHO), and the permissible limits include a substantial safety margin designed to assure the safety of all persons, regardless of age and health condition.

The technical regulations and international guidelines set out limits for radio waves as the Specific Absorption Rate, or SAR, which is the value of absorbed energy in any 10 grams of tissue over a 6-minute period. The SAR limit for mobile phones is 2.0 W/kg. The highest SAR value for this mobile phone when tested for use near the head is 0.558 W/kg (*2) and when worn on the body is 0.996 W/kg (*3). There may be slight differences between the SAR levels for each product, but they all satisfy the limit.

The actual SAR of this mobile phone while operating can be well below that indicated above. This is due to automatic changes to the power level of the device to ensure it only uses the minimum required to reach the network.

Therefore in general, the closer you are to a base station, the lower the power output of the device.

This mobile phone can be used in positions other than against your head. Please keep the mobile phone farther than 1.0 cm away from your body by using such as a carrying case or a wearable accessory without including any metals. This mobile phone satisfies the technical regulations and international guidelines.

The World Health Organization has stated that “a large number of studies have been performed over the last two decades to assess whether mobile phones pose a potential health risk. To date, no adverse health effects have been established as being caused by mobile phone use.”

Please refer to the WHO website if you would like more detailed information.
http://www.who.int/docstore/peh-emf/publications/facts_press/fact_english.htm

Please refer to the websites listed below if you would like more detailed information regarding SAR.

Ministry of Internal Affairs and Communications Website:
<http://www.tele.soumu.go.jp/e/sys/eie/index.htm>
Association of Radio Industries and Businesses Website:
<http://www.arib-emf.org/01denpa/denpa02-02.html> (In Japanese only)
NTT DOCOMO, INC. Website:
<https://www.nttdocomo.co.jp/english/product/sar/>
Panasonic Mobile Communications Co., Ltd. Website:
<http://panasonic.jp/mobile/support/> (In Japanese only)

*1 Technical regulations are defined by the Ministerial Ordinance Related to Radio Law (Article 14-2 of Radio Equipment Regulations).

*2 Including other radio systems that can be simultaneously used with LTE/FOMA.

*3 Including other radio systems that can be simultaneously used with LTE/FOMA.

European RF Exposure Information

This mobile phone complies with the EU requirements for exposure to radio waves.

Your mobile phone is a radio transceiver, designed and manufactured not to exceed the SAR* limits** for exposure to radio-frequency (RF) energy, which SAR* values, when tested for compliance against the standard are 0.509 W/kg for head configuration and 1.371 W/kg for body worn configuration.

While there may be differences between the SAR* levels of various phones and at various positions, they all meet*** the EU requirements for RF exposure.

- * The exposure standard for mobile phones employs a unit of measurement known as the Specific Absorption Rate, or SAR.
- ** The SAR limit for mobile phones used by the public is 2.0 watts/kilogram (W/kg) averaged over ten grams of tissue, recommended by The Council of the European Union. The limit incorporates a substantial margin of safety to give additional protection for the public and to account for any variations in measurements.
- *** Tests for SAR have been conducted using standard operating positions with the phone transmitting at its highest certified power level in all tested frequency bands. This mobile phone meets the RF exposure guidelines for body worn operation when positioned at least 0.5 cm from the body. Accessories used for body worn operation must not contain metal and should position the mobile phone at least the distance stated above. Use of other accessories may not ensure compliance with RF exposure guidelines. Although the SAR is determined at the highest certified power level, the actual SAR level of the phone while operating can be well below the maximum value. This is because the phone is designed to operate at multiple power levels so as to use only the power required to reach the network. In general, the closer you are to a base station antenna, the lower the power output.

CE Declaration of Conformity



The product "P-01K" is declared to conform with the essential requirements of European Union Directive 2014/53/EU Radio Equipment Directive. The Declaration of Conformity can be found on <http://panasonic.jp/mobile/support/>.

- ※ The European RE approval of this product is limited to the use of the P-01K handset, Battery Pack, Charging Cup P01 and AC Adapter 04 for Global use (100 to 240 V AC) only. Other accessories are not part of the approval.
- ※ To prevent possible hearing damage, do not listen at high volume levels for long periods.
- ※ Manufacturer information
Manufacture's Name:
Panasonic Mobile Communications Co., Ltd.
Manufacture's Address:
600 Saedo-cho, Tsuzuki-ku, Yokohama City 224-8539, Japan



■ Wi-Fi use

Operation of the device in the 5 GHz frequency band is restricted to indoor use only in the following countries.

AT BE BG CH CY CZ DE DK EE EL ES
FI FR HR HU IE IS IT LI LT LU LV MT
NL NO PL PT RO SE SI SK TR UK

■ Maximum radio-frequency power transmitted in the frequency bands

	Frequency band	Maximum transmit power
Wi-Fi 2.4 GHz	TX/RX 2412 MHz - 2462 MHz	17.0 dBm (e.i.r.p.)
Wi-Fi 5 GHz	TX/RX 5180 MHz - 5700 MHz	17.0 dBm (e.i.r.p.)
Bluetooth	TX/RX 2402 MHz - 2480 MHz	6.5 dBm (e.i.r.p.)
NFC	TX/RX 13.56 MHz	-17.03 dBuA/m at 10 m
GNSS	RX L1 1575.42 MHz (GPS), 1598.0625 MHz - 1605.375 MHz (GLONASS)	-
GSM	TX 880.2 MHz - 914.8 MHz, RX 925.2 MHz - 959.8 MHz	32.0 dBm (Power class 4)
DCS	TX 1710.2 MHz - 1784.8 MHz, RX 1805.2 MHz - 1879.8 MHz	29.5 dBm (Power class 1)
WCDMA FDD I	TX 1922.4 MHz - 1977.6 MHz, RX 2112.4 MHz - 2167.6 MHz	23.0 dBm (Power class 3)
LTE Band 1	TX 1922.5 MHz - 1977.5 MHz, RX 2112.5 MHz - 2167.5 MHz	23.0 dBm (Power class 3)
LTE Band 3	TX 1710.7 MHz - 1784.3 MHz, RX 1805.7 MHz - 1879.3 MHz	23.0 dBm (Power class 3)

FCC Notice

- This device complies with part 15 of the FCC Rules. Operation is subject to the following two conditions:
 - (1) This device may not cause harmful interference, and
 - (2) This device must accept any interference received, including interference that may cause undesired operation.
- Changes or modifications not expressly approved by the manufacturer responsible for compliance could void the user's authority to operate the equipment.
- This equipment has been tested and found to comply with the limits for a Class B digital device, pursuant to part 15 of the FCC Rules. These limits are designed to provide reasonable protection against harmful interference in a residential installation. This equipment generates, uses and can radiate radio frequency energy and, if not installed and used in accordance with the instructions, may cause harmful interference to radio communications. However, there is no guarantee that interference will not occur in a particular installation. If this equipment does cause harmful interference to radio or television reception, which can be determined by turning the equipment off and on, the user is encouraged to try to correct the interference by one or more of the following measures:
 - Reorient or relocate the receiving antenna.
 - Increase the separation between the equipment and receiver.
 - Connect the equipment into an outlet on a circuit different from that to which the receiver is connected.
 - Consult the dealer or an experienced radio/TV technician for help.

FCC RF Exposure Information

This model phone meets the U.S. government's requirements for exposure to radio waves.

Your wireless phone contains a radio transmitter and receiver. Your phone is designed and manufactured not to exceed the emission limits for exposure to radio frequency (RF) energy set by the Federal Communications Commission of the U.S. Government. These limits are part of comprehensive guidelines and establish permitted levels of RF energy for the general population. The guidelines are based on standards that were developed by independent scientific organizations through periodic and thorough evaluation of scientific studies.

The exposure standard for wireless mobile phones employs a unit of measurement known as the Specific Absorption Rate (SAR). The SAR limit set by the FCC is 1.6 W/kg.* Tests for SAR are conducted using standard operating positions accepted by the FCC with the phone transmitting at its highest certified power level in all tested frequency bands. Although the SAR is determined at the highest certified power level, the actual SAR level of the phone while operating can be well below the maximum value. This is because the phone is designed to operate at multiple power levels so as to use only the power required to reach the network. In general, the closer you are to a wireless base station antenna, the lower the output. Before a phone model is available for sale to the public, it must be tested and certified to the FCC that it does not exceed the limit established by the U.S. government-adopted requirement for safe exposure. The tests are performed in various positions and locations (for example, at the ear and worn on the body) as required by FCC for each model. The highest SAR value for this model phone as reported to the FCC when tested for use at the ear is 0.59 W/kg, and when worn on the body in a holster or carry case, is 0.98 W/kg. (Body-worn measurements differ among phone models, depending upon available accessories and FCC requirements). While there may be differences between the SAR levels of various phones and at various positions, they all meet the U.S. government requirement.

The FCC has granted an Equipment Authorization for this model phone with all reported SAR levels evaluated as in compliance with the FCC RF exposure guidelines. SAR information on this model phone is on file with the FCC and can be found under the Display Grant section at <http://www.fcc.gov/oet/ea/fccid/> after search on FCC ID UCE318001A.

For body worn operation, this phone has been tested and meets the FCC RF exposure guidelines. Please use an accessory designated for this product or an accessory which contains no metal and which positions the handset a minimum of 1.0 cm from the body.

* In the United States, the SAR limit for wireless mobile phones used by the public is 1.6 watts/kg (W/kg) averaged over one gram of tissue. SAR values may vary depending upon national reporting requirements and the network band.

Important Safety Information

Aircraft

Switch off your wireless device when boarding an aircraft or whenever you are instructed to do so by airline staff. If your device offers a 'flight mode' or similar feature consult airline staff as to whether it can be used on board.

Driving

Full attention should be given to driving at all times and local laws and regulations restricting the use of wireless devices while driving must be observed.

Hospitals

Mobile phones should be switched off wherever you are requested to do so in hospitals, clinics or health care facilities. These requests are designed to prevent possible interference with sensitive medical equipment.

Petrol Stations

Obey all posted signs with respect to the use of wireless devices or other radio equipment in locations with flammable material and chemicals. Switch off your wireless device whenever you are instructed to do so by authorized staff.

Interference

Care must be taken when using the phone in close proximity to personal medical devices, such as pacemakers and hearing aids.

Pacemakers

Pacemaker manufacturers recommend that a minimum separation of 15 cm be maintained between a mobile phone and a pacemaker to avoid potential interference with the pacemaker. To achieve this use the phone on the opposite ear to your pacemaker and do not carry it in a breast pocket.

Hearing Aids

Some digital wireless phones may interfere with some hearing aids. In the event of such interference, you may want to consult your hearing aid manufacturer to discuss alternatives.

Other Medical Devices

Please consult your physician and the device manufacturer to determine if operation of your phone may interfere with the operation of your medical device.

Battery

- Do not use/store battery in extremely low/high temperatures. Recommended operating temperature: 5°C to 35°C
- Tape over terminals to insulate Battery. Comply with local waste disposal regulations.

Export Administration Regulations

This product and its accessories might be covered by the Japan Export Administration Regulations ("Foreign Exchange and Foreign Trade Law" and its related laws) and Export Administration Regulations. To export and re-export this product and its accessories, take the required measures on your responsibility and at your expenses. For details on the procedures, contact the Ministry of Economy, Trade and Industry or the U.S. Department of Commerce.

Online various procedures, the content confirmation of your contract, etc.

From this mobile phone

メニュー (Menu) ▶ Web ▶ dメニュー・検索 (dmenu/Search) ▶ Mydocomo (お客様サポート) (Mydocomo (User support))
▶ ドコモオンライン手続き (DOCOMO online procedures) (In Japanese only)

From PC

My docomo (<https://www.nttdocomo.co.jp/mydocomo/>) ▶ Select an item in “ドコモオンライン手続き (DOCOMO online procedures)” (In Japanese only)

- You may not be able to access the site due to system maintenance or depending on the details of your subscription.
- Your “Network Security Code” and “ID/password for d ACCOUNT” is required in order to use “ドコモオンライン手続き (DOCOMO online procedures)”.

Inquiries from Overseas (loss, theft, unable to connect, etc.)

■From DOCOMO mobile phones

Shows the “+” on the display **-81-3-6832-6600 (toll free)**

(to enter “+”, press and hold the “0” key for at least one second)

※You can also enter the international access code instead of the “+”.

Business hours: 24 hours (open all year round)

- Please confirm the phone number before you dial.
- If you lose your mobile phone or have it stolen, immediately take the steps necessary for suspending the use of the mobile phone.
- If the mobile phone you purchased is damaged, bring your mobile phone to a repair counter specified by DOCOMO after returning to Japan.

■From land-line phones

International call access code for the country you stay **-81-3-6832-6600 (charged)**

※You are charged a call fee to Japan.

※For international call access codes, refer to the DOCOMO website.

Business hours: 24 hours (open all year round)

General Inquiries

<docomo Information Center>


 **0120-005-250** (toll free)

* Service available in English, Portuguese, Chinese, Spanish.
* Unavailable from part of IP phones.

Business hours: 9:00 a.m. to 8:00 p.m.

■ From DOCOMO mobile phones
(In Japanese only)

■ From land-line phones
(In Japanese only)

 (No prefix) **151** (toll free)

 **0120-800-000**

* Unavailable from land-line phones, etc.

* Unavailable from part of IP phones.

Business hours: 9:00 a.m. to 8:00 p.m. (open all year round)


● Please confirm the phone number before you dial.

● For Applications or Repairs and After-Sales Service, please contact the above-mentioned information center or the docomo Shop etc. near you on the NTT DOCOMO website.
NTT DOCOMO website <https://www.nttdocomo.co.jp/english/>

Malfunction, Repair

■ From DOCOMO mobile phones
(In Japanese only)

■ From land-line phones
(In Japanese only)

 (No prefix) **113** (toll free)

 **0120-800-000**

* Unavailable from land-line phones, etc.

* Unavailable from part of IP phones.

Business hours: 24 hours (open all year round)



Don't forget your mobile phone ... or your manners!

When using your mobile phone in a public place, don't forget to show common courtesy and consideration for others around you.

Sales: NTT DOCOMO, INC.

Manufacturer: Panasonic Mobile Communications Co., Ltd.



Li-ion 00



October '16 (1.2 Edition)

PXQP1023ZC/J1

F1016-2038