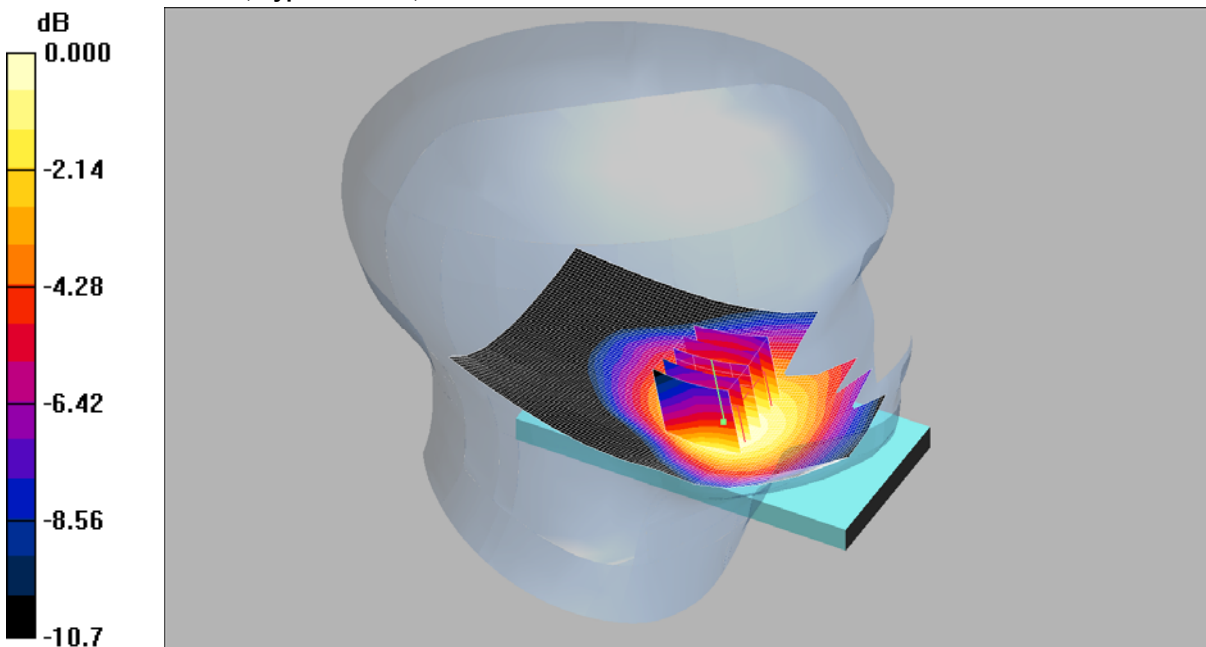


SCN/90385JD04/041: Touch Left Antenna Retracted UMTS FDD 5 CH4183

Date: 23/11/2012

DUT: NTT Docomo; Type: D22BR3; Serial: 353740050018468



0 dB = 0.584mW/g

Communication System: UMTS-FDD 5; Frequency: 836.6 MHz; Duty Cycle: 1:1

Medium: 900 MHz HSL Medium parameters used (interpolated): $f = 836.6$ MHz; $\sigma = 0.883$ mho/m; $\epsilon_r = 40.8$; $\rho = 1000$ kg/m³

Phantom section: Left Section

DASY4 Configuration:

- Probe: ET3DV6 - SN1587; ConvF(6.33, 6.33, 6.33); Calibrated: 11/05/2012

- Sensor-Surface: 4mm (Mechanical Surface Detection)

- Electronics: DAE3 Sn431; Calibrated: 20/09/2012

- Phantom: SAM 12b (Site 56); Type: SAM 4.0; Serial: TP:1020

- Measurement SW: DASY4, V4.7 Build 53; Postprocessing SW: SEMCAD, V1.8 Build 172

Touch Left Antenna Retracted- Middle/Area Scan (71x121x1): Measurement grid: dx=15mm, dy=15mm

Maximum value of SAR (interpolated) = 0.605 mW/g

Touch Left Antenna Retracted- Middle/Zoom Scan (5x5x7) (5x5x7)/Cube 0: Measurement grid: dx=8mm, dy=8mm, dz=5mm

Reference Value = 8.15 V/m; Power Drift = -0.163 dB

Peak SAR (extrapolated) = 0.723 W/kg

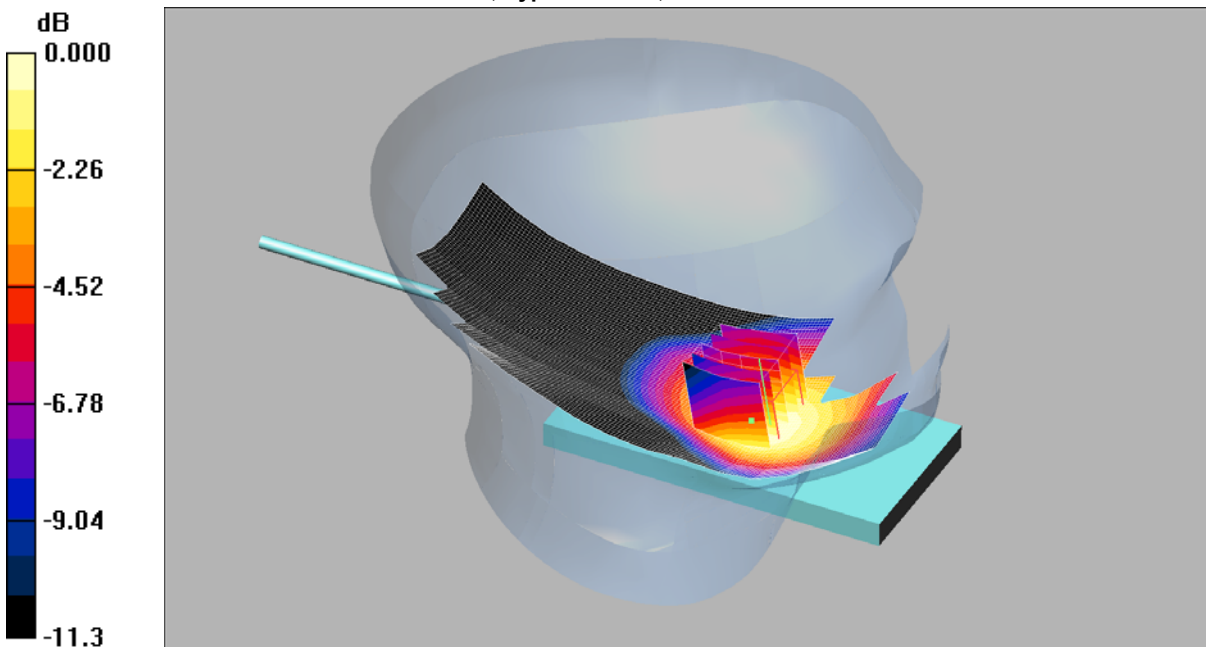
SAR(1 g) = 0.554 mW/g; SAR(10 g) = 0.412 mW/g

Maximum value of SAR (measured) = 0.584 mW/g

SCN/90385JD04/042: Touch Left Antenna Extended UMTS FDD 5 CH4183

Date: 23/11/2012

DUT: NTT Docomo D22BR3 Ant Extended; Type: D22BR3; Serial: 353740050018468



0 dB = 0.588mW/g

Communication System: UMTS-FDD 5; Frequency: 836.6 MHz; Duty Cycle: 1:1

Medium: 900 MHz HSL Medium parameters used (interpolated): $f = 836.6$ MHz; $\sigma = 0.883$ mho/m; $\epsilon_r = 40.8$; $\rho = 1000$ kg/m³

Phantom section: Left Section

DASY4 Configuration:

- Probe: ET3DV6 - SN1587; ConvF(6.33, 6.33, 6.33); Calibrated: 11/05/2012

- Sensor-Surface: 4mm (Mechanical Surface Detection)

- Electronics: DAE3 Sn431; Calibrated: 20/09/2012

- Phantom: SAM 12b (Site 56); Type: SAM 4.0; Serial: TP:1020

- Measurement SW: DASY4, V4.7 Build 53; Postprocessing SW: SEMCAD, V1.8 Build 172

Touch Left Antenna Extended- Middle/Area Scan (71x151x1): Measurement grid: dx=15mm, dy=15mm

Maximum value of SAR (interpolated) = 0.621 mW/g

Touch Left Antenna Extended- Middle/Zoom Scan (5x5x7) (5x5x7)/Cube 0: Measurement grid: dx=8mm, dy=8mm, dz=5mm

Reference Value = 7.17 V/m; Power Drift = -0.096 dB

Peak SAR (extrapolated) = 0.758 W/kg

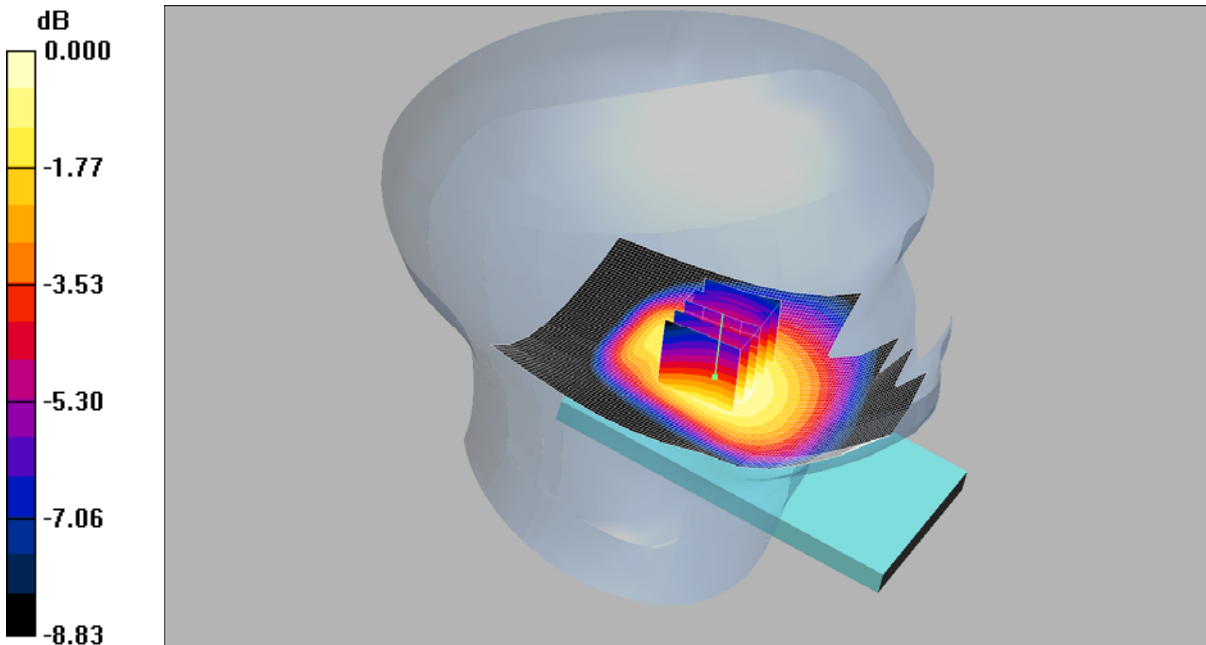
SAR(1 g) = 0.566 mW/g; SAR(10 g) = 0.418 mW/g

Maximum value of SAR (measured) = 0.588 mW/g

SCN/90385JD04/043: Tilt Left Antenna Retracted FDD CH4183

Date: 23/11/2012

DUT: NTT Docomo; Type: D22BR3; Serial: 353740050018468



0 dB = 0.299mW/g

Communication System: UMTS-FDD 5; Frequency: 836.6 MHz; Duty Cycle: 1:1

Medium: 900 MHz HSL Medium parameters used (interpolated): $f = 836.6$ MHz; $\sigma = 0.883$ mho/m; $\epsilon_r = 40.8$; $\rho = 1000$ kg/m³

Phantom section: Left Section

DASY4 Configuration:

- Probe: ET3DV6 - SN1587; ConvF(6.33, 6.33, 6.33); Calibrated: 11/05/2012

- Sensor-Surface: 4mm (Mechanical Surface Detection)

- Electronics: DAE3 Sn431; Calibrated: 20/09/2012

- Phantom: SAM 12b (Site 56); Type: SAM 4.0; Serial: TP:1020

- Measurement SW: DASY4, V4.7 Build 53; Postprocessing SW: SEMCAD, V1.8 Build 172

Tilt Left Antenna Retracted- Middle/Area Scan (71x121x1): Measurement grid: dx=15mm, dy=15mm

Maximum value of SAR (interpolated) = 0.296 mW/g

Tilt Left Antenna Retracted- Middle/Zoom Scan (5x5x7) (5x5x7)/Cube 0: Measurement grid: dx=8mm, dy=8mm, dz=5mm

Reference Value = 12.8 V/m; Power Drift = 0.000 dB

Peak SAR (extrapolated) = 0.347 W/kg

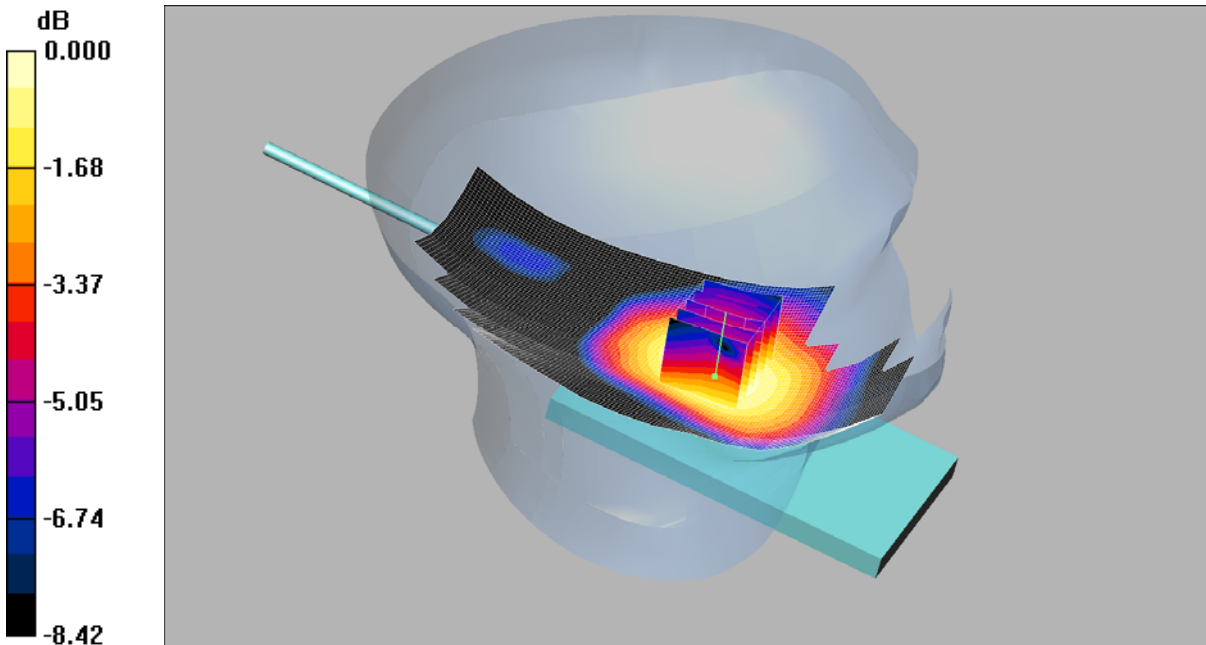
SAR(1 g) = 0.283 mW/g; SAR(10 g) = 0.218 mW/g

Maximum value of SAR (measured) = 0.299 mW/g

SCN/90385JD04/044: Tilt Left Antenna Extended UMTS FDD 5 CH4183

Date: 23/11/2012

DUT: NTT Docomo D22BR3 Ant Extended; Type: D22BR3; Serial: 353740050018468



0 dB = 0.260mW/g

Communication System: UMTS-FDD 5; Frequency: 836.6 MHz; Duty Cycle: 1:1

Medium: 900 MHz HSL Medium parameters used (interpolated): $f = 836.6$ MHz; $\sigma = 0.883$ mho/m; $\epsilon_r = 40.8$; $\rho = 1000$ kg/m³

Phantom section: Left Section

DASY4 Configuration:

- Probe: ET3DV6 - SN1587; ConvF(6.33, 6.33, 6.33); Calibrated: 11/05/2012

- Sensor-Surface: 4mm (Mechanical Surface Detection)

- Electronics: DAE3 Sn431; Calibrated: 20/09/2012

- Phantom: SAM 12b (Site 56); Type: SAM 4.0; Serial: TP:1020

- Measurement SW: DASY4, V4.7 Build 53; Postprocessing SW: SEMCAD, V1.8 Build 172

Tilt Left Antenna Extended- Middle/Area Scan (71x151x1): Measurement grid: dx=15mm, dy=15mm

Maximum value of SAR (interpolated) = 0.268 mW/g

Tilt Left Antenna Extended- Middle/Zoom Scan (5x5x7) (5x5x7)/Cube 0: Measurement grid: dx=8mm, dy=8mm, dz=5mm

Reference Value = 12.0 V/m; Power Drift = -0.059 dB

Peak SAR (extrapolated) = 0.303 W/kg

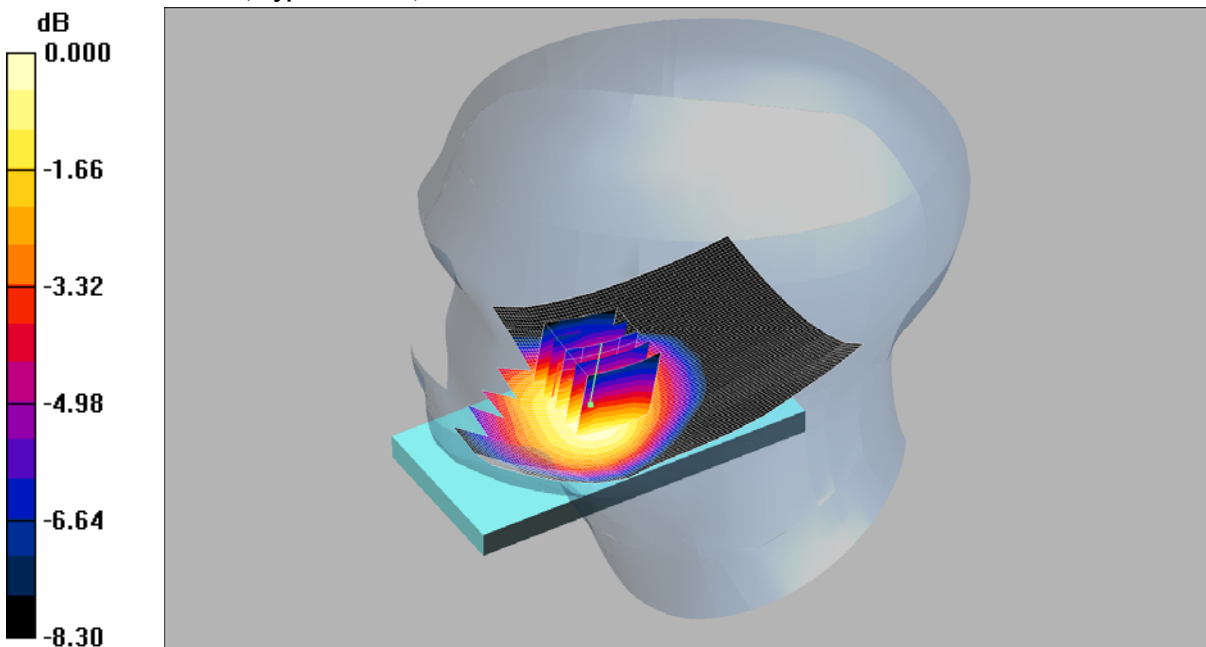
SAR(1 g) = 0.250 mW/g; SAR(10 g) = 0.194 mW/g

Maximum value of SAR (measured) = 0.260 mW/g

SCN/90385JD04/045: Touch Right Antenna Retracted UMTS FDD 5 CH4183

Date: 23/11/2012

DUT: NTT Docomo; Type: D22BR3; Serial: 353740050018468



0 dB = 0.518mW/g

Communication System: UMTS-FDD 5; Frequency: 836.6 MHz; Duty Cycle: 1:1

Medium: 900 MHz HSL Medium parameters used (interpolated): $f = 836.6$ MHz; $\sigma = 0.883$ mho/m; $\epsilon_r = 40.8$; $\rho = 1000$ kg/m³

Phantom section: Right Section

DASY4 Configuration:

- Probe: ET3DV6 - SN1587; ConvF(6.33, 6.33, 6.33); Calibrated: 11/05/2012

- Sensor-Surface: 4mm (Mechanical Surface Detection)

- Electronics: DAE3 Sn431; Calibrated: 20/09/2012

- Phantom: SAM 12b (Site 56); Type: SAM 4.0; Serial: TP:1020

- Measurement SW: DASY4, V4.7 Build 53; Postprocessing SW: SEMCAD, V1.8 Build 172

Touch Right Antenna Retracted- Middle/Area Scan (71x121x1): Measurement grid: dx=15mm, dy=15mm

Maximum value of SAR (interpolated) = 0.512 mW/g

Touch Right Antenna Retracted- Middle/Zoom Scan (5x5x7) (5x5x7)/Cube 0: Measurement grid: dx=8mm, dy=8mm, dz=5mm

Reference Value = 6.33 V/m; Power Drift = 0.010 dB

Peak SAR (extrapolated) = 0.617 W/kg

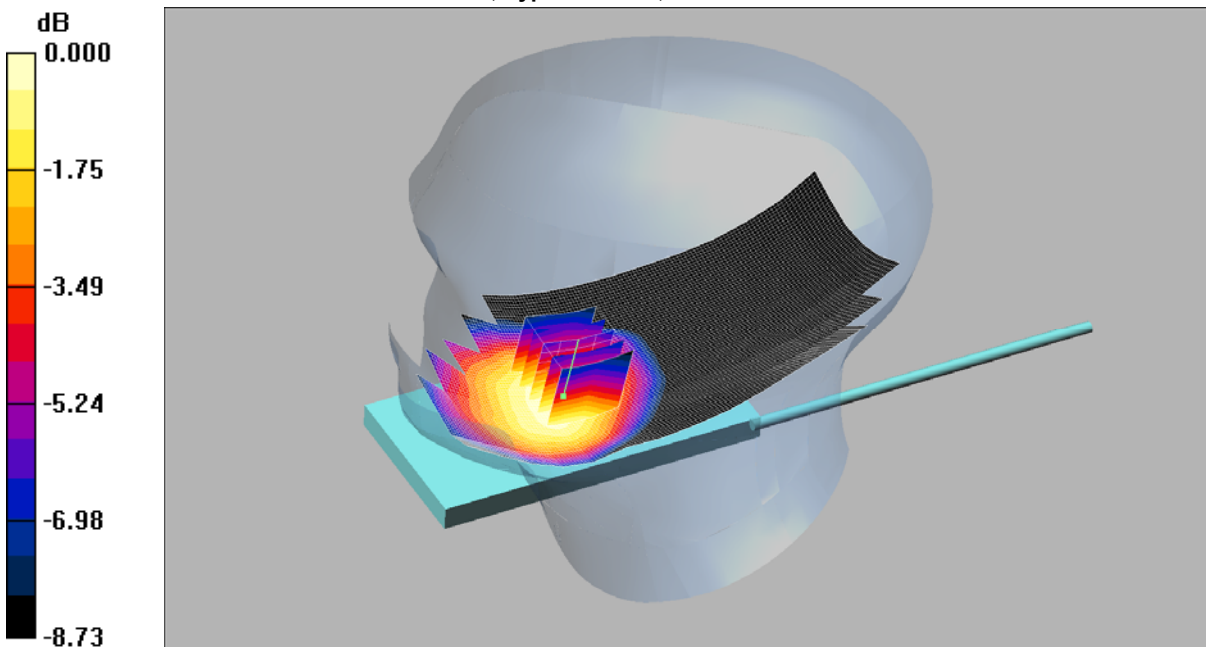
SAR(1 g) = 0.492 mW/g; SAR(10 g) = 0.373 mW/g

Maximum value of SAR (measured) = 0.518 mW/g

SCN/90385JD04/046: Touch Right Antenna Extended UMTS FDD 5 CH4183

Date: 23/11/2012

DUT: NTT Docomo D22BR3 Ant Extended; Type: D22BR3; Serial: 353740050018468



0 dB = 0.502mW/g

Communication System: UMTS-FDD 5; Frequency: 836.6 MHz; Duty Cycle: 1:1

Medium: 900 MHz HSL Medium parameters used (interpolated): $f = 836.6$ MHz; $\sigma = 0.883$ mho/m; $\epsilon_r = 40.8$; $\rho = 1000$ kg/m³

Phantom section: Right Section

DASY4 Configuration:

- Probe: ET3DV6 - SN1587; ConvF(6.33, 6.33, 6.33); Calibrated: 11/05/2012

- Sensor-Surface: 4mm (Mechanical Surface Detection)

- Electronics: DAE3 Sn431; Calibrated: 20/09/2012

- Phantom: SAM 12b (Site 56); Type: SAM 4.0; Serial: TP:1020

- Measurement SW: DASY4, V4.7 Build 53; Postprocessing SW: SEMCAD, V1.8 Build 172

Touch Right Antenna Extended- Middle/Area Scan (71x151x1): Measurement grid: dx=15mm, dy=15mm

Maximum value of SAR (interpolated) = 0.515 mW/g

Touch Right Antenna Extended- Middle/Zoom Scan (5x5x7) (5x5x7)/Cube 0: Measurement grid: dx=8mm, dy=8mm, dz=5mm

Reference Value = 6.19 V/m; Power Drift = -0.005 dB

Peak SAR (extrapolated) = 0.596 W/kg

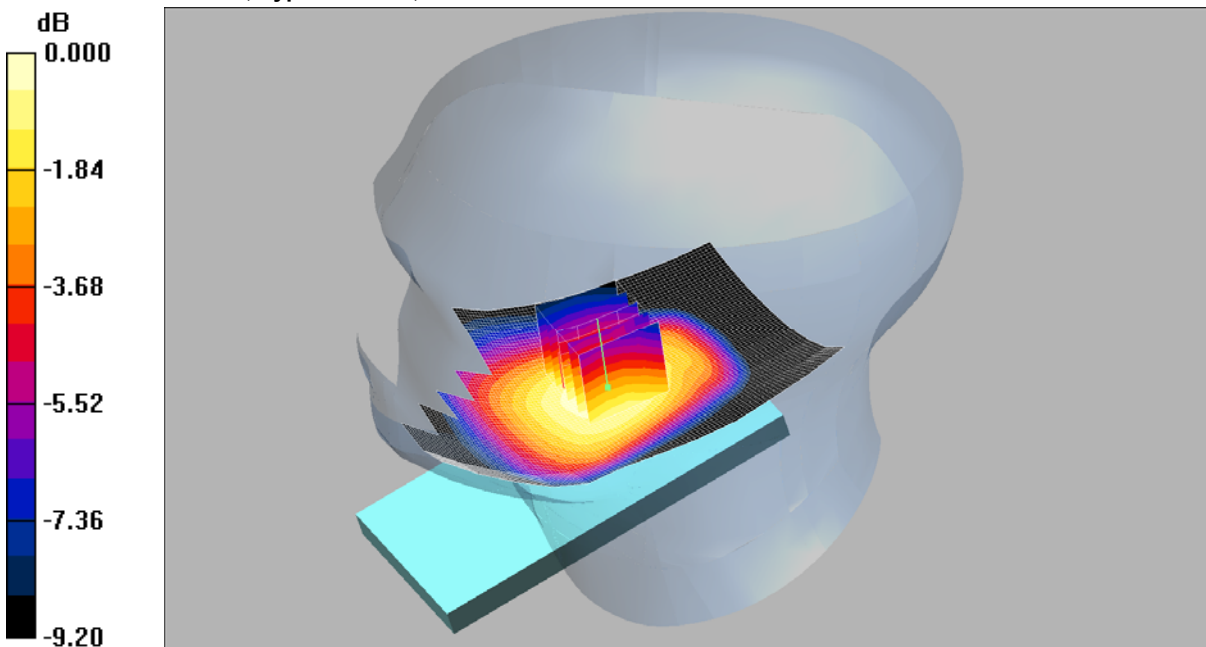
SAR(1 g) = 0.478 mW/g; SAR(10 g) = 0.366 mW/g

Maximum value of SAR (measured) = 0.502 mW/g

SCN/90385JD04/047: Tilt Right Antenna Retracted UMTS FDD 5 CH4183

Date: 23/11/2012

DUT: NTT Docomo; Type: D22BR3; Serial: 353740050018468



0 dB = 0.334mW/g

Communication System: UMTS-FDD 5; Frequency: 836.6 MHz; Duty Cycle: 1:1

Medium: 900 MHz HSL Medium parameters used (interpolated): $f = 836.6$ MHz; $\sigma = 0.883$ mho/m; $\epsilon_r = 40.8$; $\rho = 1000$ kg/m³

Phantom section: Right Section

DASY4 Configuration:

- Probe: ET3DV6 - SN1587; ConvF(6.33, 6.33, 6.33); Calibrated: 11/05/2012

- Sensor-Surface: 4mm (Mechanical Surface Detection)

- Electronics: DAE3 Sn431; Calibrated: 20/09/2012

- Phantom: SAM 12b (Site 56); Type: SAM 4.0; Serial: TP:1020

- Measurement SW: DASY4, V4.7 Build 53; Postprocessing SW: SEMCAD, V1.8 Build 172

Tilt Right Antenna Retracted- Middle/Area Scan (71x121x1): Measurement grid: dx=15mm, dy=15mm

Maximum value of SAR (interpolated) = 0.340 mW/g

Tilt Right Antenna Retracted- Middle/Zoom Scan (5x5x7) (5x5x7)/Cube 0: Measurement grid: dx=8mm, dy=8mm, dz=5mm

Reference Value = 12.7 V/m; Power Drift = -0.052 dB

Peak SAR (extrapolated) = 0.389 W/kg

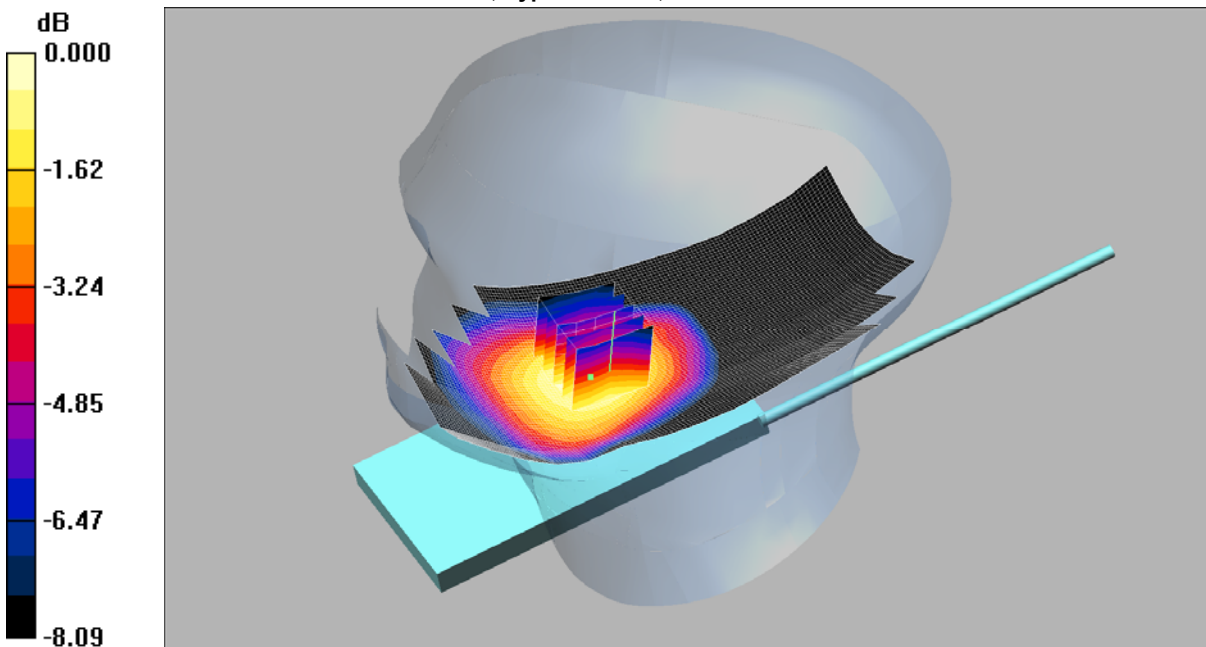
SAR(1 g) = 0.322 mW/g; SAR(10 g) = 0.245 mW/g

Maximum value of SAR (measured) = 0.334 mW/g

SCN/90385JD04/048: Tilt Right Antenna Extended UMTS FDD 5 CH4183

Date: 23/11/2012

DUT: NTT Docomo D22BR3 Ant Extended; Type: D22BR3; Serial: 353740050018468



0 dB = 0.318mW/g

Communication System: UMTS-FDD 5; Frequency: 836.6 MHz; Duty Cycle: 1:1

Medium: 900 MHz HSL Medium parameters used (interpolated): $f = 836.6$ MHz; $\sigma = 0.883$ mho/m; $\epsilon_r = 40.8$; $\rho = 1000$ kg/m³

Phantom section: Right Section

DASY4 Configuration:

- Probe: ET3DV6 - SN1587; ConvF(6.33, 6.33, 6.33); Calibrated: 11/05/2012

- Sensor-Surface: 4mm (Mechanical Surface Detection)

- Electronics: DAE3 Sn431; Calibrated: 20/09/2012

- Phantom: SAM 12b (Site 56); Type: SAM 4.0; Serial: TP:1020

- Measurement SW: DASY4, V4.7 Build 53; Postprocessing SW: SEMCAD, V1.8 Build 172

Tilt Right Antenna Extended- Middle/Area Scan (71x151x1): Measurement grid: dx=15mm, dy=15mm

Maximum value of SAR (interpolated) = 0.316 mW/g

Tilt Right Antenna Extended- Middle/Zoom Scan (5x5x7) (5x5x7)/Cube 0: Measurement grid: dx=8mm, dy=8mm, dz=5mm

Reference Value = 11.6 V/m; Power Drift = -0.012 dB

Peak SAR (extrapolated) = 0.368 W/kg

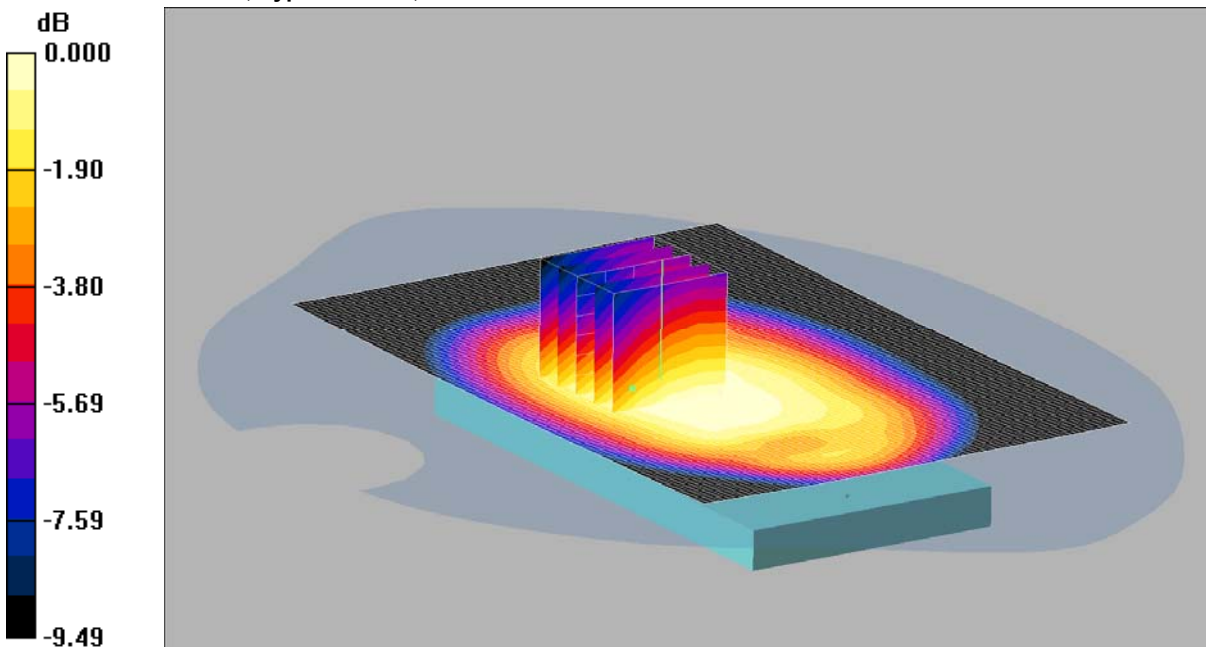
SAR(1 g) = 0.305 mW/g; SAR(10 g) = 0.236 mW/g

Maximum value of SAR (measured) = 0.318 mW/g

SCN/90385JD04/049: Front of EUT Facing Phantom Antenna Retracted UMTS FDD 5 CH4183

Date: 22/11/2012

DUT: NTT Docomo; Type: D22BR3; Serial: 353740050018468



0 dB = 0.559mW/g

Communication System: UMTS-FDD 5; Frequency: 836.6 MHz; Duty Cycle: 1:1

Medium: 900 MHz MSL Medium parameters used (interpolated): $f = 836.6$ MHz; $\sigma = 0.95$ mho/m; $\epsilon_r = 54.1$; $\rho = 1000$ kg/m³

Phantom section: Flat Section

DASY4 Configuration:

- Probe: ET3DV6 - SN1587; ConvF(6.28, 6.28, 6.28); Calibrated: 11/05/2012

- Sensor-Surface: 4mm (Mechanical Surface Detection)

- Electronics: DAE3 Sn431; Calibrated: 20/09/2012

- Phantom: SAM 12a (Site 56); Type: SAM 4.0; Serial: TP:1020

- Measurement SW: DASY4, V4.7 Build 53; Postprocessing SW: SEMCAD, V1.8 Build 172

Front of EUT Facing Phantom Antenna Retracted- Middle/Area Scan (81x121x1): Measurement grid:

dx=15mm, dy=15mm

Maximum value of SAR (interpolated) = 0.560 mW/g

Front of EUT Facing Phantom Antenna Retracted- Middle/Zoom Scan (5x5x7) (5x5x7)/Cube 0:

Measurement grid: dx=8mm, dy=8mm, dz=5mm

Reference Value = 24.9 V/m; Power Drift = -0.025 dB

Peak SAR (extrapolated) = 0.647 W/kg

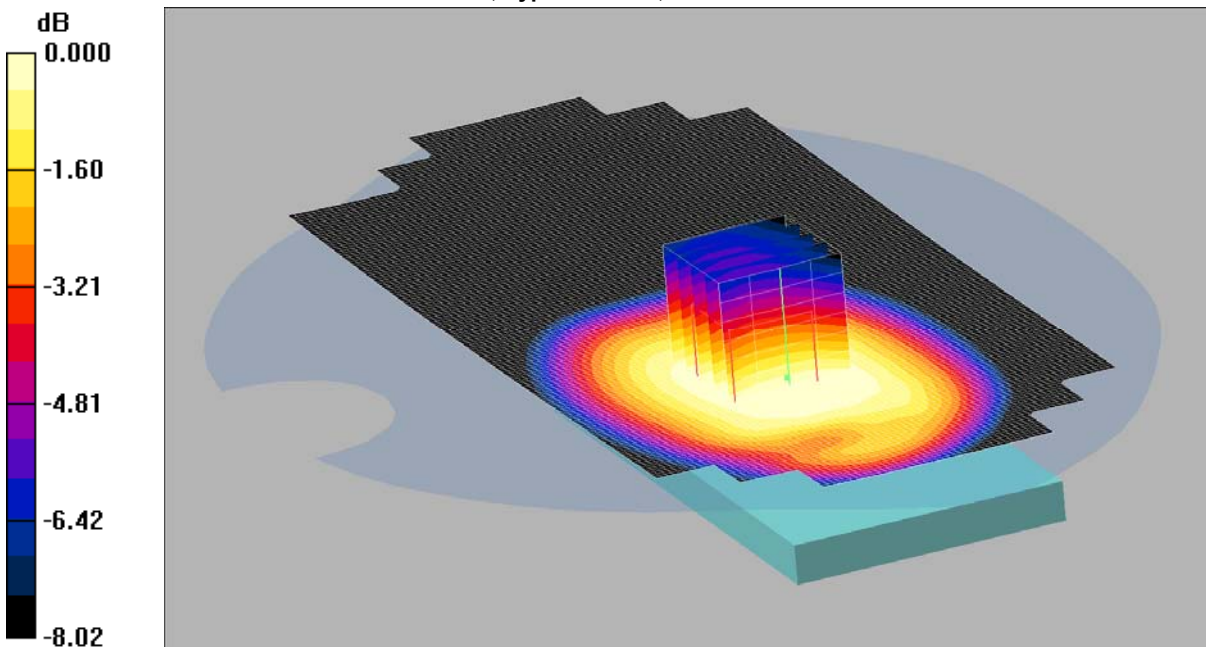
SAR(1 g) = 0.537 mW/g; SAR(10 g) = 0.416 mW/g

Maximum value of SAR (measured) = 0.559 mW/g

SCN/90385JD04/050: Front of EUT Facing Phantom Antenna Extended UMTS FDD 5 CH4183

Date: 22/11/2012

DUT: NTT Docomo D22BR3 Ant Extended; Type: D22BR3; Serial: 353740050018468



0 dB = 0.559mW/g

Communication System: UMTS-FDD 5; Frequency: 836.6 MHz; Duty Cycle: 1:1

Medium: 900 MHz MSL Medium parameters used (interpolated): $f = 836.6$ MHz; $\sigma = 0.95$ mho/m; $\epsilon_r = 54.1$; $\rho = 1000$ kg/m³

Phantom section: Flat Section

DASY4 Configuration:

- Probe: ET3DV6 - SN1587; ConvF(6.28, 6.28, 6.28); Calibrated: 11/05/2012

- Sensor-Surface: 4mm (Mechanical Surface Detection)

- Electronics: DAE3 Sn431; Calibrated: 20/09/2012

- Phantom: SAM 12a (Site 56); Type: SAM 4.0; Serial: TP:1020

- Measurement SW: DASY4, V4.7 Build 53; Postprocessing SW: SEMCAD, V1.8 Build 172

Front of EUT Facing Phantom- Middle/Area Scan (81x181x1): Measurement grid: dx=15mm, dy=15mm

Maximum value of SAR (interpolated) = 0.557 mW/g

Front of EUT Facing Phantom- Middle/Zoom Scan (5x5x7) (5x5x7)/Cube 0: Measurement grid: dx=8mm, dy=8mm, dz=5mm

Reference Value = 16.8 V/m; Power Drift = -0.012 dB

Peak SAR (extrapolated) = 0.638 W/kg

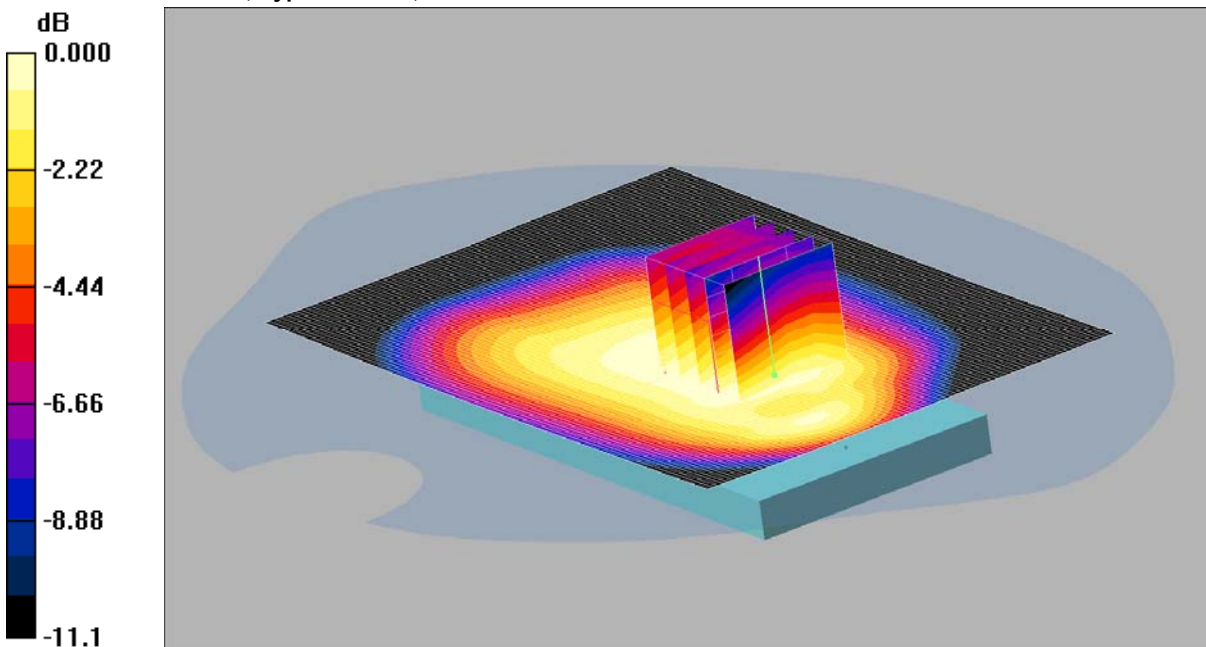
SAR(1 g) = 0.536 mW/g; SAR(10 g) = 0.421 mW/g

Maximum value of SAR (measured) = 0.559 mW/g

SCN/90385JD04/051: Back of EUT Facing Phantom Antenna Retracted UMTS FDD 5 CH4183

Date/Time: 22/11/2012

DUT: NTT Docomo; Type: D22BR3; Serial: 353740050018468



0 dB = 0.517mW/g

Communication System: UMTS-FDD 5; Frequency: 836.6 MHz; Duty Cycle: 1:1

Medium: 900 MHz MSL Medium parameters used (interpolated): $f = 836.6$ MHz; $\sigma = 0.95$ mho/m; $\epsilon_r = 54.1$; $\rho = 1000$ kg/m³

Phantom section: Flat Section

DASY4 Configuration:

- Probe: ET3DV6 - SN1587; ConvF(6.28, 6.28, 6.28); Calibrated: 11/05/2012

- Sensor-Surface: 4mm (Mechanical Surface Detection)

- Electronics: DAE3 Sn431; Calibrated: 20/09/2012

- Phantom: SAM 12a (Site 56); Type: SAM 4.0; Serial: TP:1020

- Measurement SW: DASY4, V4.7 Build 53; Postprocessing SW: SEMCAD, V1.8 Build 172

Back of EUT Facing Phantom- Middle/Area Scan (81x121x1): Measurement grid: dx=15mm, dy=15mm

Maximum value of SAR (interpolated) = 0.525 mW/g

Back of EUT Facing Phantom- Middle/Zoom Scan (5x5x7) 2 2 2 (5x5x7)/Cube 0: Measurement grid:

dx=8mm, dy=8mm, dz=5mm

Reference Value = 23.4 V/m; Power Drift = 0.010 dB

Peak SAR (extrapolated) = 0.609 W/kg

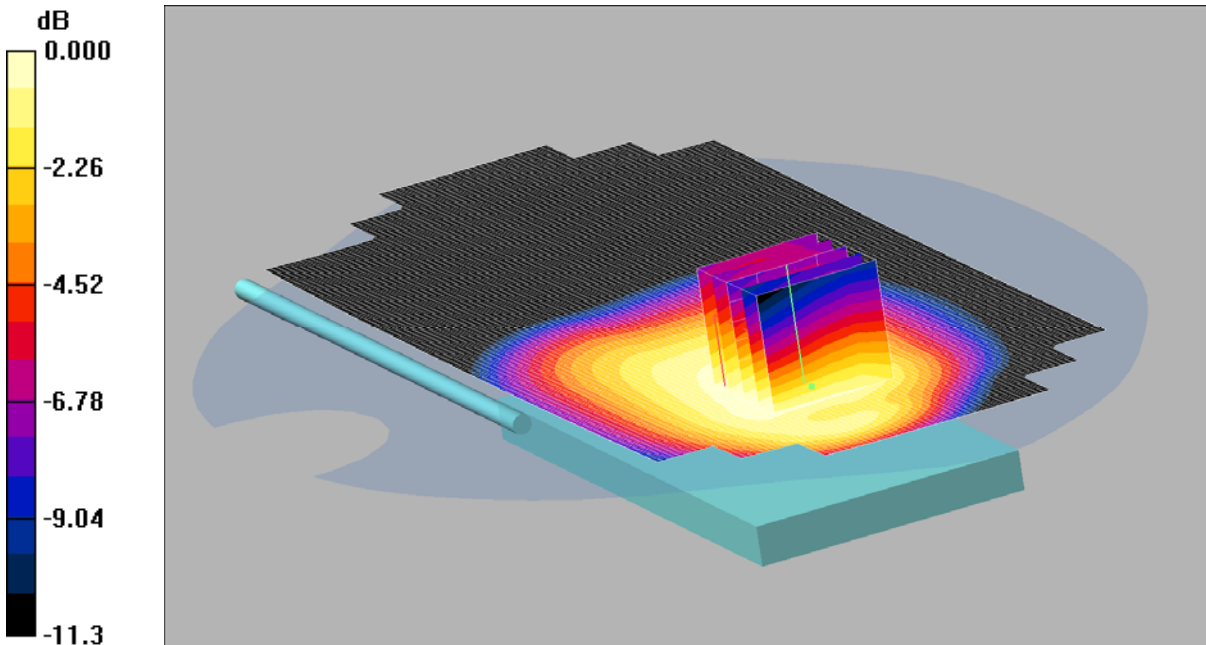
SAR(1 g) = 0.490 mW/g; SAR(10 g) = 0.374 mW/g

Maximum value of SAR (measured) = 0.517 mW/g

SCN/90385JD04/052: Back of EUT Facing Phantom Antenna Extended UMTS FDD 5 CH4183

Date: 22/11/2012

DUT: NTT Docomo D22BR3 Ant Extended; Type: D22BR3; Serial: 353740050018468



0 dB = 0.571mW/g

Communication System: UMTS-FDD 5; Frequency: 836.6 MHz; Duty Cycle: 1:1

Medium: 900 MHz MSL Medium parameters used (interpolated): $f = 836.6$ MHz; $\sigma = 0.95$ mho/m; $\epsilon_r = 54.1$; $\rho = 1000$ kg/m³

Phantom section: Flat Section

DASY4 Configuration:

- Probe: ET3DV6 - SN1587; ConvF(6.28, 6.28, 6.28); Calibrated: 11/05/2012

- Sensor-Surface: 4mm (Mechanical Surface Detection)

- Electronics: DAE3 Sn431; Calibrated: 20/09/2012

- Phantom: SAM 12a (Site 56); Type: SAM 4.0; Serial: TP:1020

- Measurement SW: DASY4, V4.7 Build 53; Postprocessing SW: SEMCAD, V1.8 Build 172

Back of EUT Facing Phantom Ant Extended- Middle/Area Scan (81x181x1): Measurement grid: dx=15mm, dy=15mm

Maximum value of SAR (interpolated) = 0.570 mW/g

Back of EUT Facing Phantom Ant Extended- Middle/Zoom Scan (5x5x7) 2 (5x5x7)/Cube 0: Measurement grid: dx=8mm, dy=8mm, dz=5mm

Reference Value = 14.7 V/m; Power Drift = 0.009 dB

Peak SAR (extrapolated) = 0.715 W/kg

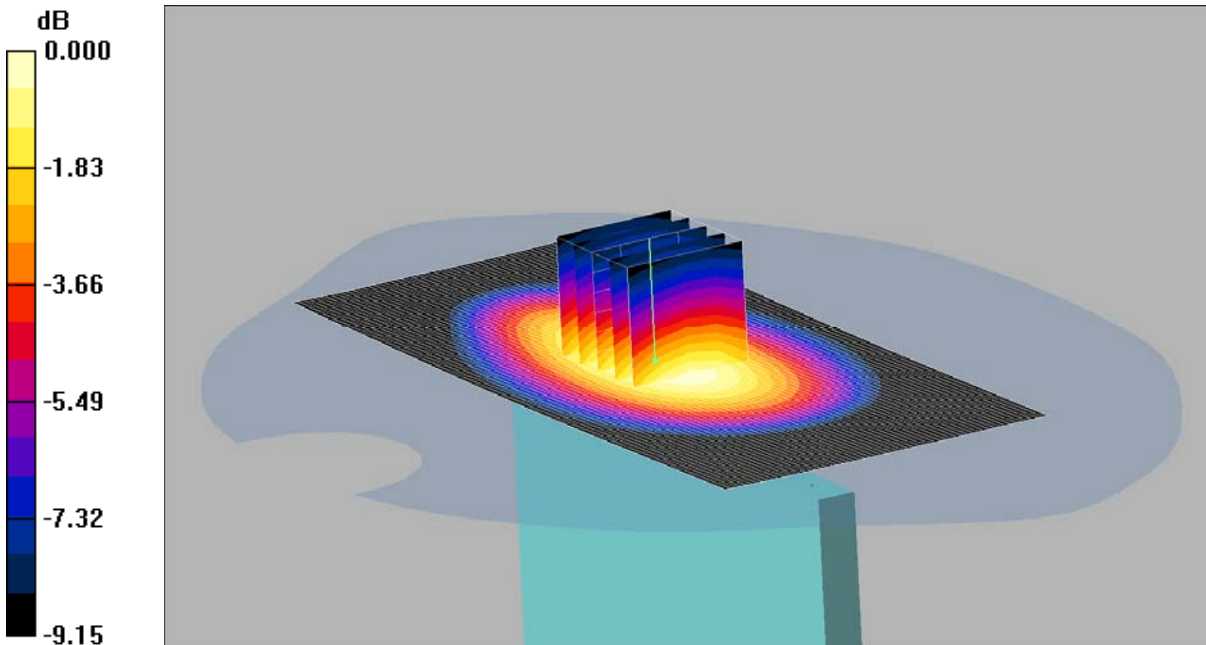
SAR(1 g) = 0.547 mW/g; SAR(10 g) = 0.412 mW/g

Maximum value of SAR (measured) = 0.571 mW/g

SCN/90385JD04/053: Left Hand Side of EUT Facing Phantom Antenna Retracted UMTS FDD 5 CH4183

Date: 22/11/2012

DUT: NTT Docomo; Type: D22BR3; Serial: 353740050018468



0 dB = 0.454mW/g

Communication System: UMTS-FDD 5; Frequency: 836.6 MHz; Duty Cycle: 1:1

Medium: 900 MHz MSL Medium parameters used (interpolated): $f = 836.6$ MHz; $\sigma = 0.95$ mho/m; $\epsilon_r = 54.1$; $\rho = 1000$ kg/m³

Phantom section: Flat Section

DASY4 Configuration:

- Probe: ET3DV6 - SN1587; ConvF(6.28, 6.28, 6.28); Calibrated: 11/05/2012

- Sensor-Surface: 4mm (Mechanical Surface Detection)

- Electronics: DAE3 Sn431; Calibrated: 20/09/2012

- Phantom: SAM 12a (Site 56); Type: SAM 4.0; Serial: TP:1020

- Measurement SW: DASY4, V4.7 Build 53; Postprocessing SW: SEMCAD, V1.8 Build 172

Left Hand Side of EUT Antenna Retracted- Middle/Area Scan (61x131x1): Measurement grid: dx=15mm, dy=15mm

Maximum value of SAR (interpolated) = 0.461 mW/g

Left Hand Side of EUT Antenna Retracted- Middle/Zoom Scan (5x5x7) (5x5x7)/Cube 0: Measurement grid:

dx=8mm, dy=8mm, dz=5mm

Reference Value = 22.7 V/m; Power Drift = -0.014 dB

Peak SAR (extrapolated) = 0.571 W/kg

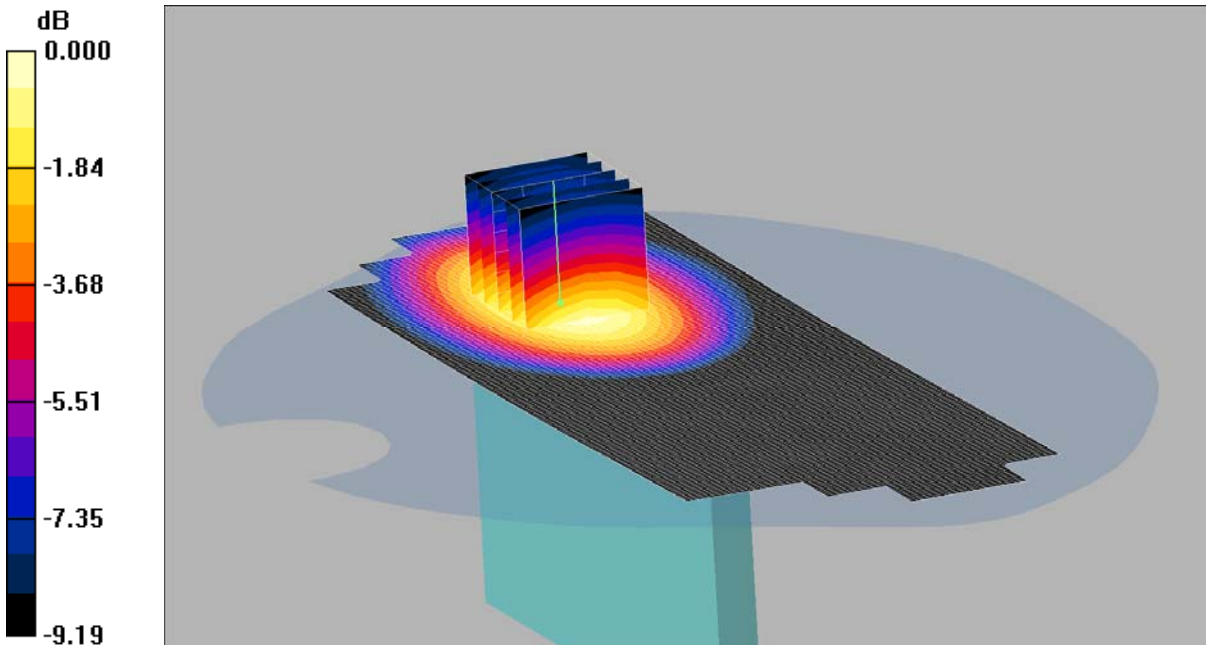
SAR(1 g) = 0.424 mW/g; SAR(10 g) = 0.296 mW/g

Maximum value of SAR (measured) = 0.454 mW/g

SCN/90385JD04/054: Left Hand Side of EUT Facing Phantom Antenna Extended UMTS FDD 5 CH4183

Date: 22/11/2012

DUT: NTT Docomo D22BR3 Ant Extended; Type: D22BR3; Serial: 353740050018468



0 dB = 0.568mW/g

Communication System: UMTS-FDD 5; Frequency: 836.6 MHz; Duty Cycle: 1:1

Medium: 900 MHz MSL Medium parameters used (interpolated): $f = 836.6$ MHz; $\sigma = 0.95$ mho/m; $\epsilon_r = 54.1$; $\rho = 1000$ kg/m³

Phantom section: Flat Section

DASY4 Configuration:

- Probe: ET3DV6 - SN1587; ConvF(6.28, 6.28, 6.28); Calibrated: 11/05/2012

- Sensor-Surface: 4mm (Mechanical Surface Detection)

- Electronics: DAE3 Sn431; Calibrated: 20/09/2012

- Phantom: SAM 12a (Site 56); Type: SAM 4.0; Serial: TP:1020

- Measurement SW: DASY4, V4.7 Build 53; Postprocessing SW: SEMCAD, V1.8 Build 172

Left Hand Side of EUT Antenna Extended - Middle/Area Scan (61x181x1): Measurement grid: dx=15mm, dy=15mm

Maximum value of SAR (interpolated) = 0.566 mW/g

Left Hand Side of EUT Antenna Extended - Middle/Zoom Scan (5x5x7) (5x5x7)/Cube 0: Measurement grid:

dx=8mm, dy=8mm, dz=5mm

Reference Value = 11.9 V/m; Power Drift = 0.005 dB

Peak SAR (extrapolated) = 0.710 W/kg

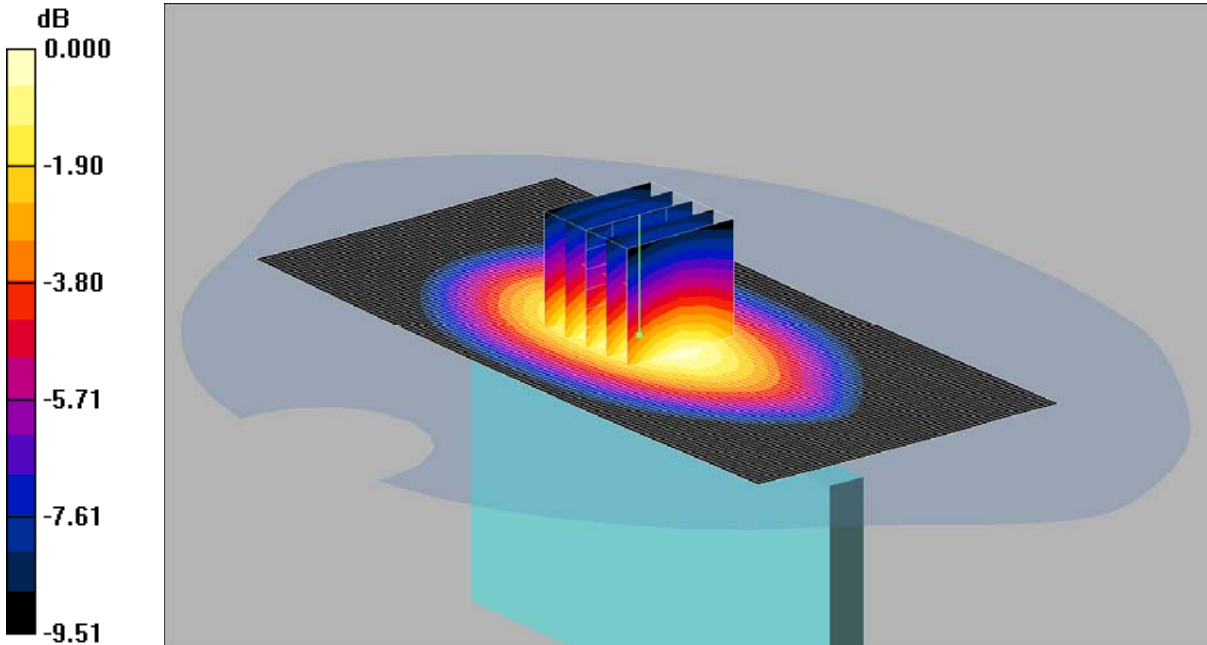
SAR(1 g) = 0.528 mW/g; SAR(10 g) = 0.368 mW/g

Maximum value of SAR (measured) = 0.568 mW/g

SCN/90385JD04/055: Right Hand Side of EUT Facing Phantom Antenna Retracted UMTS FDD 5 CH4183

Date: 22/11/2012

DUT: NTT Docomo; Type: D22BR3; Serial: 353740050018468



0 dB = 0.375mW/g

Communication System: UMTS-FDD 5; Frequency: 836.6 MHz; Duty Cycle: 1:1

Medium: 900 MHz MSL Medium parameters used (interpolated): $f = 836.6$ MHz; $\sigma = 0.95$ mho/m; $\epsilon_r = 54.1$; $\rho = 1000$ kg/m³

Phantom section: Flat Section

DASY4 Configuration:

- Probe: ET3DV6 - SN1587; ConvF(6.28, 6.28, 6.28); Calibrated: 11/05/2012

- Sensor-Surface: 4mm (Mechanical Surface Detection)

- Electronics: DAE3 Sn431; Calibrated: 20/09/2012

- Phantom: SAM 12a (Site 56); Type: SAM 4.0; Serial: TP:1020

- Measurement SW: DASY4, V4.7 Build 53; Postprocessing SW: SEMCAD, V1.8 Build 172

Right Hand Side of EUT Antenna Retracted- Middle/Area Scan (61x131x1): Measurement grid: dx=15mm, dy=15mm

Maximum value of SAR (interpolated) = 0.387 mW/g

Right Hand Side of EUT Antenna Retracted- Middle/Zoom Scan (5x5x7) (5x5x7)/Cube 0: Measurement grid:

dx=8mm, dy=8mm, dz=5mm

Reference Value = 20.5 V/m; Power Drift = -0.013 dB

Peak SAR (extrapolated) = 0.476 W/kg

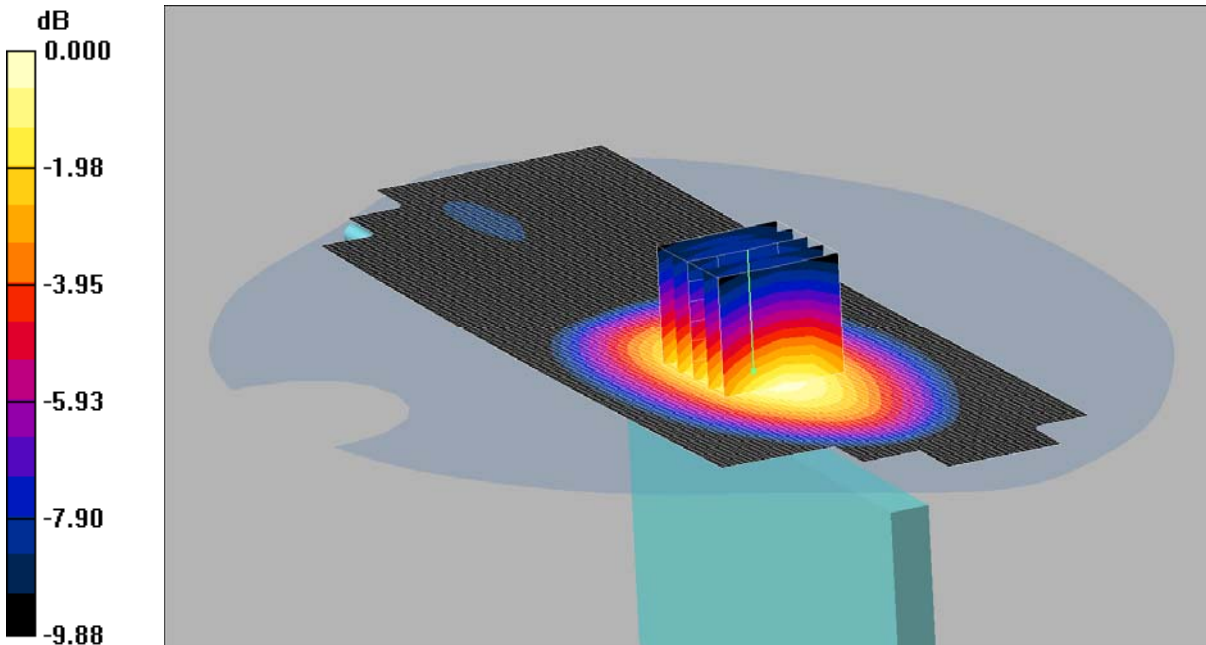
SAR(1 g) = 0.350 mW/g; SAR(10 g) = 0.242 mW/g

Maximum value of SAR (measured) = 0.375 mW/g

SCN/90385JD04/056: Right Hand Side of EUT Facing Phantom Antenna Extended UMTS FDD 5 CH4183

Date: 22/11/2012

DUT: NTT Docomo D22BR3 Ant Extended; Type: D22BR3; Serial: 353740050018468



0 dB = 0.420mW/g

Communication System: UMTS-FDD 5; Frequency: 836.6 MHz; Duty Cycle: 1:1

Medium: 900 MHz MSL Medium parameters used (interpolated): $f = 836.6$ MHz; $\sigma = 0.95$ mho/m; $\epsilon_r = 54.1$; $\rho = 1000$ kg/m³

Phantom section: Flat Section

DASY4 Configuration:

- Probe: ET3DV6 - SN1587; ConvF(6.28, 6.28, 6.28); Calibrated: 11/05/2012

- Sensor-Surface: 4mm (Mechanical Surface Detection)

- Electronics: DAE3 Sn431; Calibrated: 20/09/2012

- Phantom: SAM 12a (Site 56); Type: SAM 4.0; Serial: TP:1020

- Measurement SW: DASY4, V4.7 Build 53; Postprocessing SW: SEMCAD, V1.8 Build 172

Right Hand Side of EUT Antenna Extended- Middle/Area Scan (61x181x1): Measurement grid: dx=15mm, dy=15mm

Maximum value of SAR (interpolated) = 0.421 mW/g

Right Hand Side of EUT Antenna Extended- Middle/Zoom Scan (5x5x7) (5x5x7)/Cube 0: Measurement grid:

dx=8mm, dy=8mm, dz=5mm

Reference Value = 14.2 V/m; Power Drift = -0.013 dB

Peak SAR (extrapolated) = 0.538 W/kg

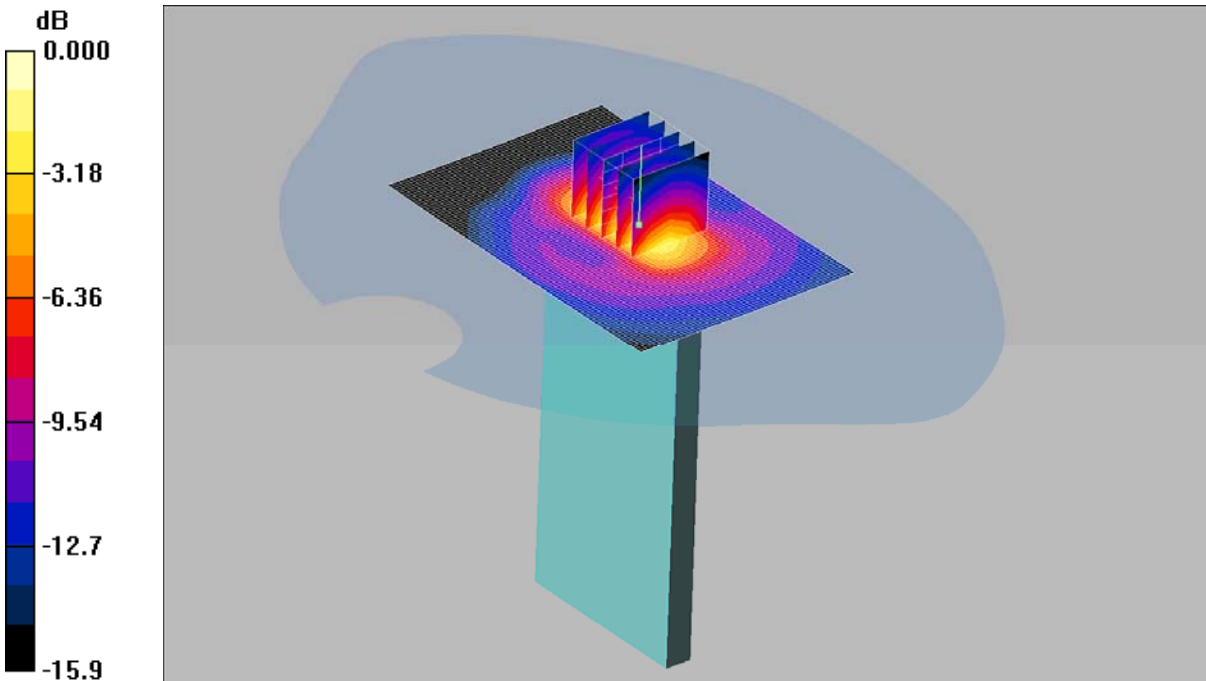
SAR(1 g) = 0.389 mW/g; SAR(10 g) = 0.263 mW/g

Maximum value of SAR (measured) = 0.420 mW/g

SCN/90385JD04/057: Top of EUT Facing Phantom Antenna Retracted UMTS FDD 5 CH4183

Date 22/11/2012

DUT: NTT Docomo; Type: D22BR3; Serial: 353740050018468



0 dB = 0.379mW/g

Communication System: UMTS-FDD 5; Frequency: 836.6 MHz; Duty Cycle: 1:1

Medium: 900 MHz MSL Medium parameters used (interpolated): $f = 836.6$ MHz; $\sigma = 0.95$ mho/m; $\epsilon_r = 54.1$; $\rho = 1000$ kg/m³

Phantom section: Flat Section

DASY4 Configuration:

- Probe: ET3DV6 - SN1587; ConvF(6.28, 6.28, 6.28); Calibrated: 11/05/2012

- Sensor-Surface: 4mm (Mechanical Surface Detection)

- Electronics: DAE3 Sn431; Calibrated: 20/09/2012

- Phantom: SAM 12a (Site 56); Type: SAM 4.0; Serial: TP:1020

- Measurement SW: DASY4, V4.7 Build 53; Postprocessing SW: SEMCAD, V1.8 Build 172

Bottom of EUT Antenna Retracted- Middle/Area Scan (61x91x1): Measurement grid: dx=15mm, dy=15mm

Maximum value of SAR (interpolated) = 0.380 mW/g

Bottom of EUT Antenna Retracted- Middle/Zoom Scan (5x5x7) (5x5x7)/Cube 0: Measurement grid: dx=8mm, dy=8mm, dz=5mm

Reference Value = 16.7 V/m; Power Drift = 0.110 dB

Peak SAR (extrapolated) = 0.674 W/kg

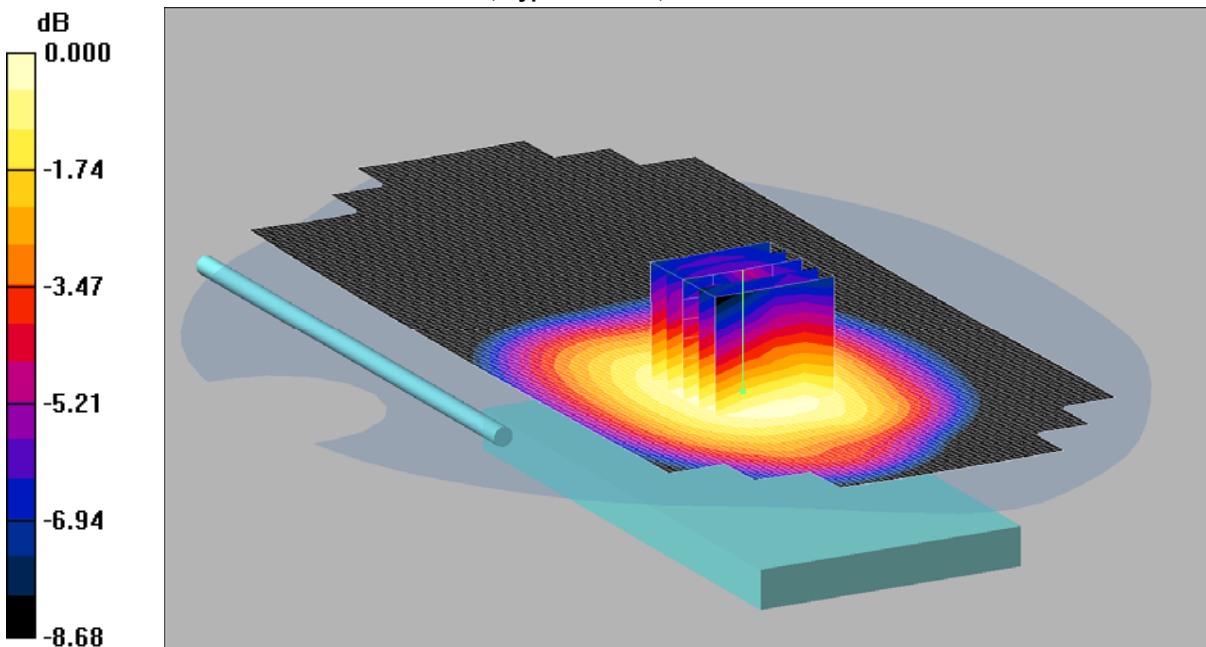
SAR(1 g) = 0.337 mW/g; SAR(10 g) = 0.172 mW/g

Maximum value of SAR (measured) = 0.379 mW/g

SCN/90385JD04/058: Back of EUT Facing Phantom Antenna Extended UMTS FDD 5 CH4183

Date: 22/11/2012

DUT: NTT Docomo D22BR3 Ant Extended; Type: D22BR3; Serial: 353740050018468



0 dB = 0.469mW/g

Communication System: UMTS-FDD 5; Frequency: 836.6 MHz; Duty Cycle: 1:1

Medium: 900 MHz MSL Medium parameters used (interpolated): $f = 836.6$ MHz; $\sigma = 0.95$ mho/m; $\epsilon_r = 54.1$; $\rho = 1000$ kg/m³

Phantom section: Flat Section

DASY4 Configuration:

- Probe: ET3DV6 - SN1587; ConvF(6.28, 6.28, 6.28); Calibrated: 11/05/2012

- Sensor-Surface: 4mm (Mechanical Surface Detection)

- Electronics: DAE3 Sn431; Calibrated: 20/09/2012

- Phantom: SAM 12a (Site 56); Type: SAM 4.0; Serial: TP:1020

- Measurement SW: DASY4, V4.7 Build 53; Postprocessing SW: SEMCAD, V1.8 Build 172

Back of EUT Facing Phantom Ant Extended- Middle/Area Scan (81x181x1): Measurement grid: dx=15mm, dy=15mm

Maximum value of SAR (interpolated) = 0.463 mW/g

Back of EUT Facing Phantom Ant Extended- Middle/Zoom Scan (5x5x7) (5x5x7)/Cube 0: Measurement grid:

dx=8mm, dy=8mm, dz=5mm

Reference Value = 15.9 V/m; Power Drift = 0.128 dB

Peak SAR (extrapolated) = 0.515 W/kg

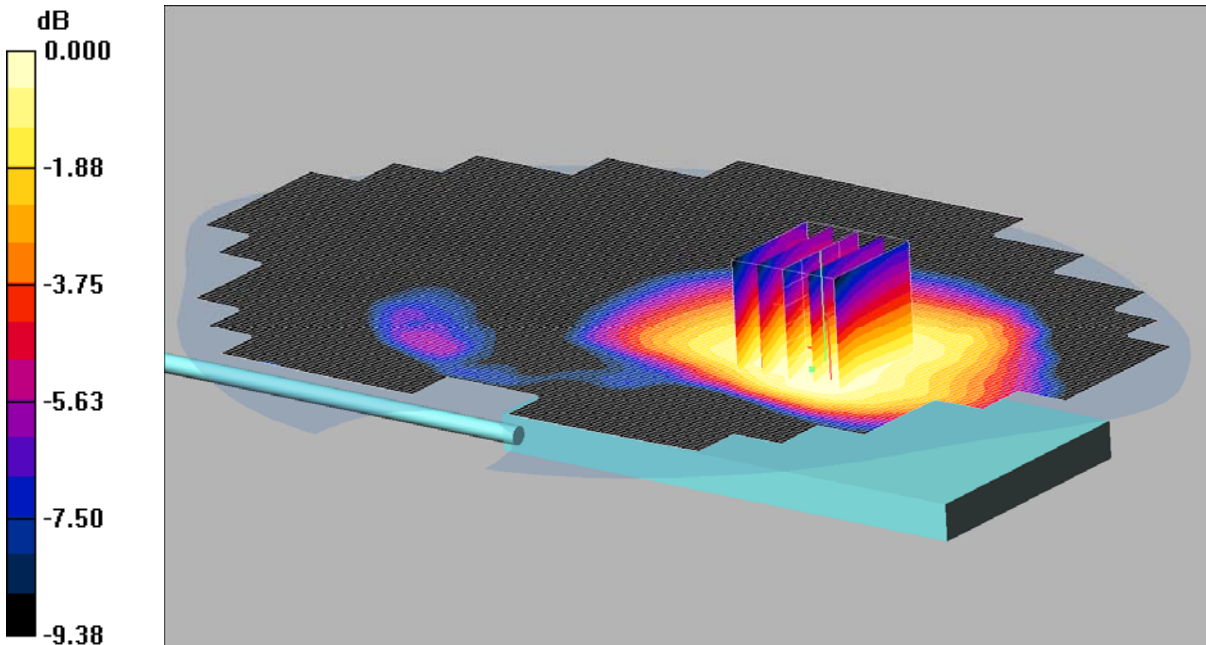
SAR(1 g) = 0.445 mW/g; SAR(10 g) = 0.340 mW/g

Maximum value of SAR (measured) = 0.469 mW/g

SCN/90385JD04/059: Back of EUT Antenna Extended Facing Phantom with PHF UMTS FDD 5 CH4183

Date: 22/11/2012

DUT: NTT Docomo D22BR3 Ant Extended; Type: D22BR3; Serial: 353740050018468



0 dB = 0.558mW/g

Communication System: UMTS-FDD 5; Frequency: 836.6 MHz; Duty Cycle: 1:1

Medium: 900 MHz MSL Medium parameters used (interpolated): $f = 836.6$ MHz; $\sigma = 0.95$ mho/m; $\epsilon_r = 54.1$; $\rho = 1000$ kg/m³

Phantom section: Flat Section

DASY4 Configuration:

- Probe: ET3DV6 - SN1587; ConvF(6.28, 6.28, 6.28); Calibrated: 11/05/2012

- Sensor-Surface: 4mm (Mechanical Surface Detection)

- Electronics: DAE3 Sn431; Calibrated: 20/09/2012

- Phantom: SAM 12a (Site 56); Type: SAM 4.0; Serial: TP:1020

- Measurement SW: DASY4, V4.7 Build 53; Postprocessing SW: SEMCAD, V1.8 Build 172

Back of EUT Facing Phantom Ant Extended with PHF- Middle/Area Scan (121x201x1): Measurement grid:

$dx=15$ mm, $dy=15$ mm

Maximum value of SAR (interpolated) = 0.573 mW/g

Back of EUT Facing Phantom Ant Extended with PHF- Middle/Zoom Scan (5x5x7) 2 (5x5x7)/Cube 0:

Measurement grid: $dx=8$ mm, $dy=8$ mm, $dz=5$ mm

Reference Value = 14.7 V/m; Power Drift = -0.008 dB

Peak SAR (extrapolated) = 0.637 W/kg

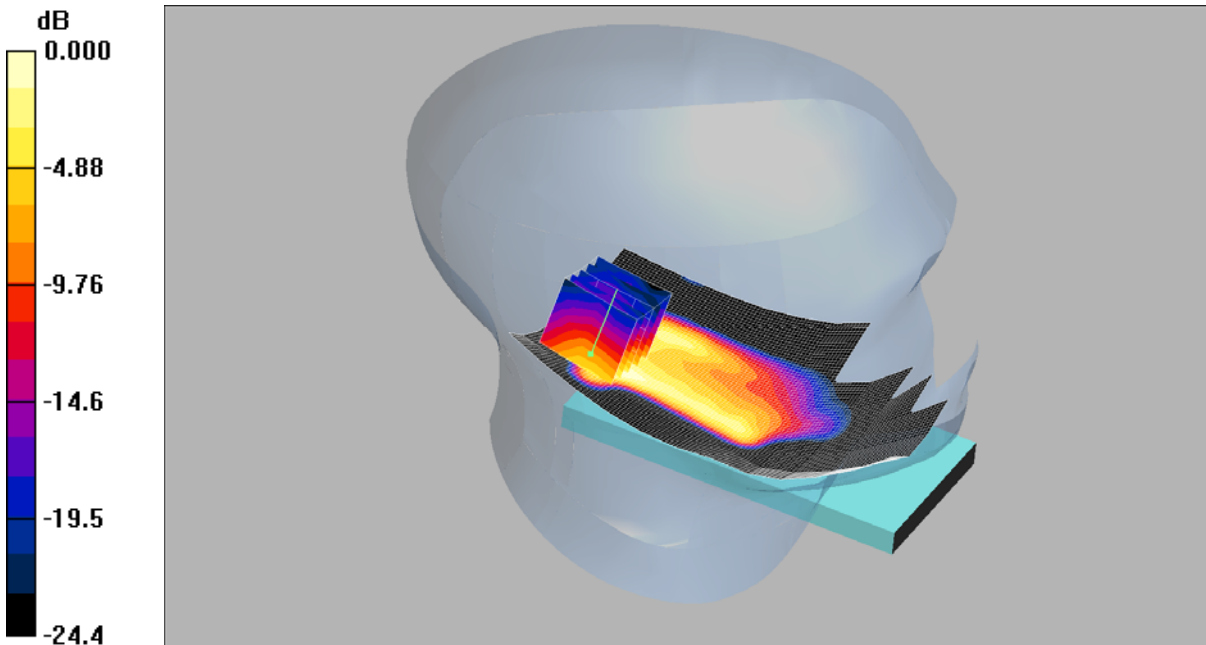
SAR(1 g) = 0.533 mW/g; SAR(10 g) = 0.412 mW/g

Maximum value of SAR (measured) = 0.558 mW/g

SCN/90385JD04/060: Touch Left Antenna Retracted 802.11b 1Mbps CH6

Date: 28/11/2012

DUT: NTT Docomo; Type: D22BR3; Serial: 353740050018468



0 dB = 0.112mW/g

Communication System: WLAN; Frequency: 2437 MHz; Duty Cycle: 1:1

Medium: 2450 MHz HSL Medium parameters used (interpolated): $f = 2437$ MHz; $\sigma = 1.86$ mho/m; $\epsilon_r = 38.4$; $\rho = 1000$ kg/m³

Phantom section: Left Section

DASY4 Configuration:

- Probe: ET3DV6 - SN1587; ConvF(4.52, 4.52, 4.52); Calibrated: 11/05/2012

- Sensor-Surface: 4mm (Mechanical Surface Detection)

- Electronics: DAE3 Sn431; Calibrated: 20/09/2012

- Phantom: SAM 12b (Site 56); Type: SAM 4.0; Serial: TP:1020

- Measurement SW: DASY4, V4.7 Build 53; Postprocessing SW: SEMCAD, V1.8 Build 172

Touch Left Ant Retracted- Middle/Area Scan (71x121x1): Measurement grid: dx=15mm, dy=15mm

Maximum value of SAR (interpolated) = 0.160 mW/g

Touch Left Ant Retracted- Middle/Zoom Scan (5x5x7) (5x5x7)/Cube 0: Measurement grid: dx=8mm, dy=8mm, dz=5mm

Reference Value = 4.51 V/m; Power Drift = -0.163 dB

Peak SAR (extrapolated) = 0.213 W/kg

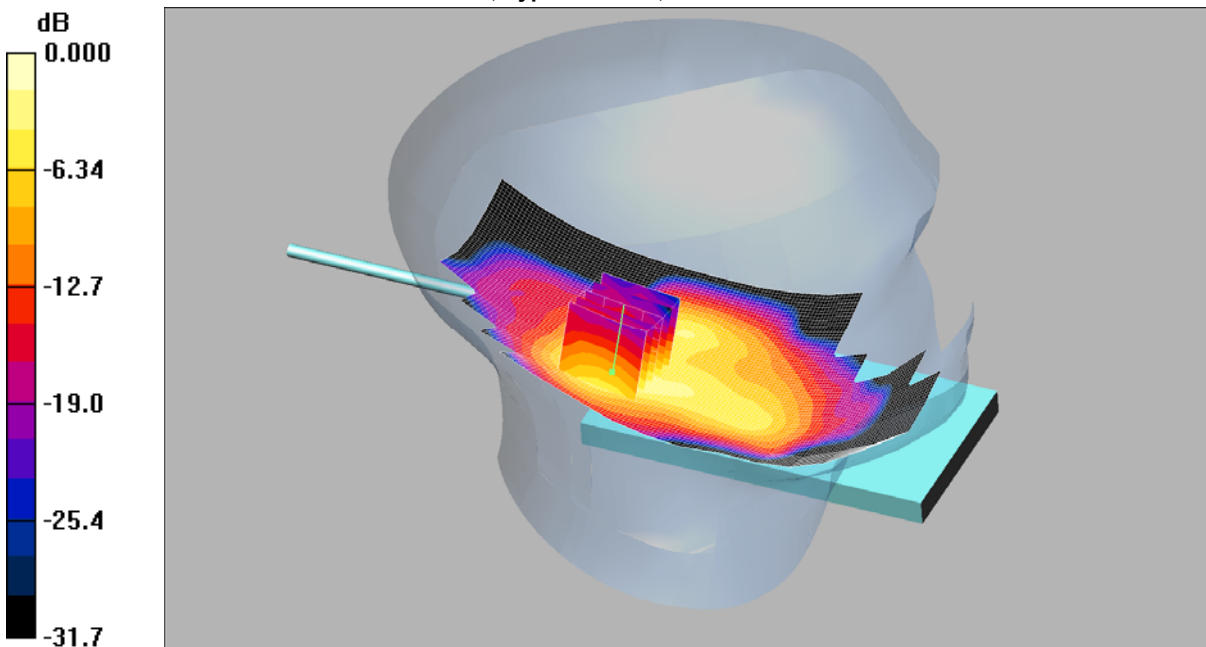
SAR(1 g) = 0.099 mW/g; SAR(10 g) = 0.046 mW/g

Maximum value of SAR (measured) = 0.112 mW/g

SCN/90385JD04/061: Touch Left Antenna Extended 802.11b 1Mbps CH6

Date: 28/11/2012

DUT: NTT Docomo D22BR3 Ant Extended; Type: D22BR3; Serial: 353740050018468



0 dB = 0.109mW/g

Communication System: WLAN; Frequency: 2437 MHz; Duty Cycle: 1:1

Medium: 2450 MHz HSL Medium parameters used (interpolated): $f = 2437$ MHz; $\sigma = 1.86$ mho/m; $\epsilon_r = 38.4$; $\rho = 1000$ kg/m³

Phantom section: Left Section

DASY4 Configuration:

- Probe: ET3DV6 - SN1587; ConvF(4.52, 4.52, 4.52); Calibrated: 11/05/2012

- Sensor-Surface: 4mm (Mechanical Surface Detection)

- Electronics: DAE3 Sn431; Calibrated: 20/09/2012

- Phantom: SAM 12b (Site 56); Type: SAM 4.0; Serial: TP:1020

- Measurement SW: DASY4, V4.7 Build 53; Postprocessing SW: SEMCAD, V1.8 Build 172

Touch Left Antenna Extended- Middle/Area Scan (71x151x1): Measurement grid: dx=15mm, dy=15mm

Maximum value of SAR (interpolated) = 0.120 mW/g

Touch Left Antenna Extended- Middle/Zoom Scan (5x5x7) (5x5x7)/Cube 0: Measurement grid: dx=8mm, dy=8mm, dz=5mm

Reference Value = 4.56 V/m; Power Drift = -0.084 dB

Peak SAR (extrapolated) = 0.211 W/kg

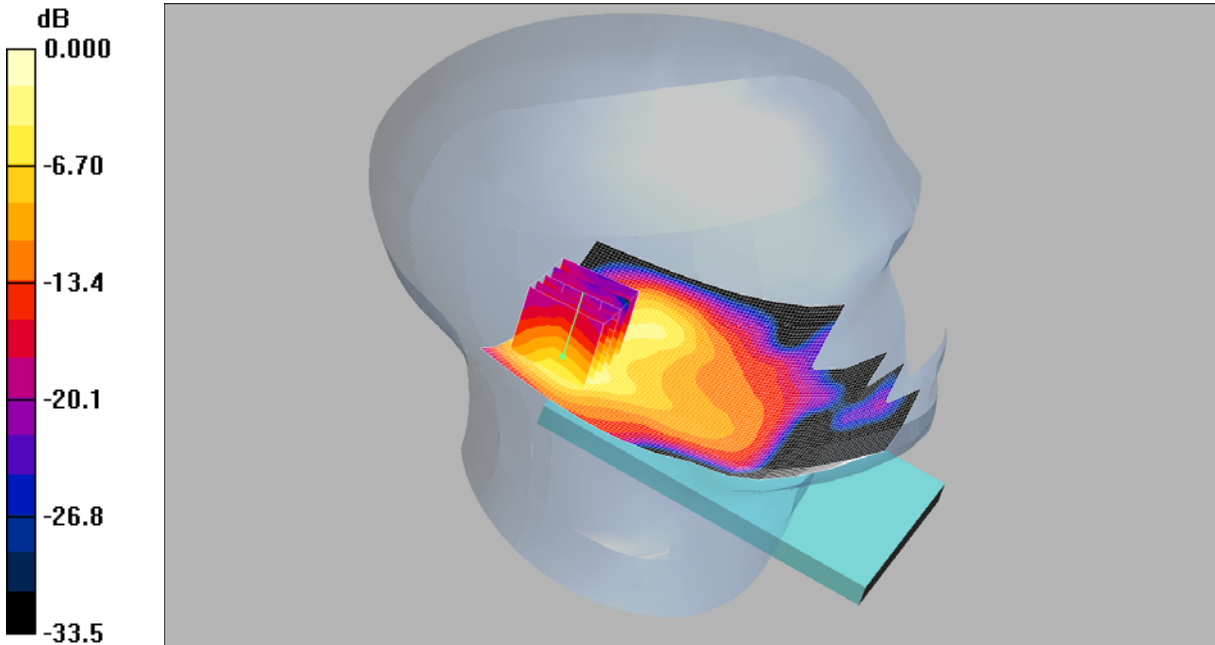
SAR(1 g) = 0.100 mW/g; SAR(10 g) = 0.046 mW/g

Maximum value of SAR (measured) = 0.109 mW/g

SCN/90385JD04/062: Tilt Left Antenna Retracted 802.11b 1Mbps CH6

Date: 28/11/2012

DUT: NTT Docomo; Type: D22BR3; Serial: 353740050018468



0 dB = 0.102mW/g

Communication System: WLAN; Frequency: 2437 MHz; Duty Cycle: 1:1

Medium: 2450 MHz HSL Medium parameters used (interpolated): $f = 2437$ MHz; $\sigma = 1.86$ mho/m; $\epsilon_r = 38.4$; $\rho = 1000$ kg/m³

Phantom section: Left Section

DASY4 Configuration:

- Probe: ET3DV6 - SN1587; ConvF(4.52, 4.52, 4.52); Calibrated: 11/05/2012

- Sensor-Surface: 4mm (Mechanical Surface Detection)

- Electronics: DAE3 Sn431; Calibrated: 20/09/2012

- Phantom: SAM 12b (Site 56); Type: SAM 4.0; Serial: TP:1020

- Measurement SW: DASY4, V4.7 Build 53; Postprocessing SW: SEMCAD, V1.8 Build 172

Tilt Left Antenna Retracted- Middle/Area Scan (71x121x1): Measurement grid: dx=15mm, dy=15mm

Maximum value of SAR (interpolated) = 0.089 mW/g

Tilt Left Antenna Retracted- Middle/Zoom Scan (5x5x7) (5x5x7)/Cube 0: Measurement grid: dx=8mm, dy=8mm, dz=5mm

Reference Value = 4.26 V/m; Power Drift = 0.014 dB

Peak SAR (extrapolated) = 0.194 W/kg

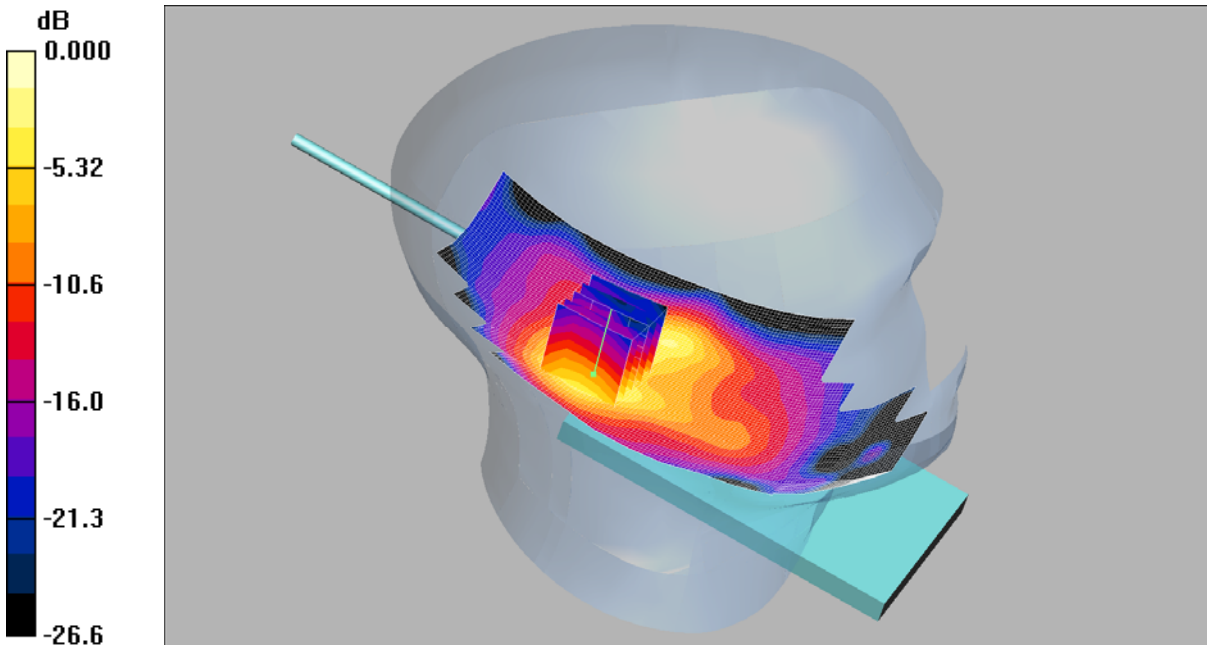
SAR(1 g) = 0.089 mW/g; SAR(10 g) = 0.041 mW/g

Maximum value of SAR (measured) = 0.102 mW/g

SCN/90385JD04/063: Tilt Left Antenna Extended 802.11b 1Mbps CH6

Date: 28/11/2012

DUT: NTT Docomo D22BR3 Ant Extended; Type: D22BR3; Serial: 353740050018468



0 dB = 0.099mW/g

Communication System: WLAN; Frequency: 2437 MHz; Duty Cycle: 1:1

Medium: 2450 MHz HSL Medium parameters used (interpolated): $f = 2437$ MHz; $\sigma = 1.86$ mho/m; $\epsilon_r = 38.4$; $\rho = 1000$ kg/m³

Phantom section: Left Section

DASY4 Configuration:

- Probe: ET3DV6 - SN1587; ConvF(4.52, 4.52, 4.52); Calibrated: 11/05/2012

- Sensor-Surface: 4mm (Mechanical Surface Detection)

- Electronics: DAE3 Sn431; Calibrated: 20/09/2012

- Phantom: SAM 12b (Site 56); Type: SAM 4.0; Serial: TP:1020

- Measurement SW: DASY4, V4.7 Build 53; Postprocessing SW: SEMCAD, V1.8 Build 172

Tilt Left Antenna Extended- Middle/Area Scan (71x151x1): Measurement grid: dx=15mm, dy=15mm

Maximum value of SAR (interpolated) = 0.099 mW/g

Tilt Left Antenna Extended- Middle/Zoom Scan (5x5x7) (5x5x7)/Cube 0: Measurement grid: dx=8mm, dy=8mm, dz=5mm

Reference Value = 4.34 V/m; Power Drift = -0.058 dB

Peak SAR (extrapolated) = 0.195 W/kg

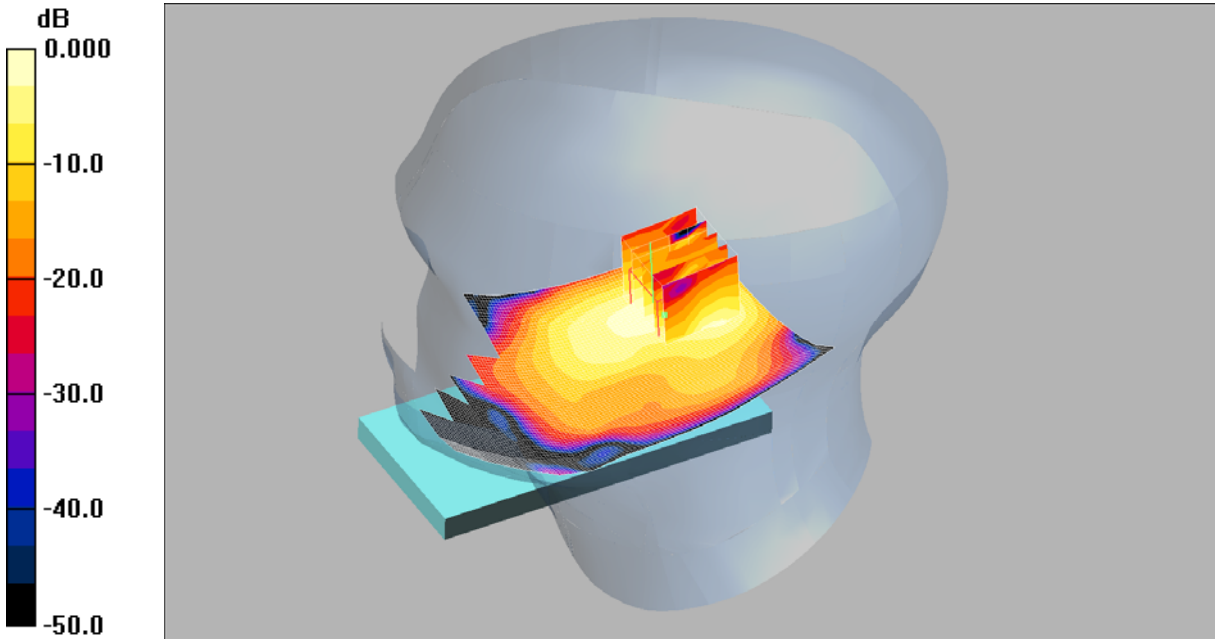
SAR(1 g) = 0.090 mW/g; SAR(10 g) = 0.041 mW/g

Maximum value of SAR (measured) = 0.099 mW/g

SCN/90385JD04/064: Touch Right Antenna Retracted 802.11b 1Mbps CH6

Date: 28/11/2012

DUT: NTT Docomo; Type: D22BR3; Serial: 3537400500184



0 dB = 0.169mW/g

Communication System: WLAN; Frequency: 2437 MHz; Duty Cycle: 1:1

Medium: 2450 MHz HSL Medium parameters used (interpolated): $f = 2437$ MHz; $\sigma = 1.86$ mho/m; $\epsilon_r = 38.4$; $\rho = 1000$ kg/m³

Phantom section: Right Section

DASY4 Configuration:

- Probe: ET3DV6 - SN1587; ConvF(4.52, 4.52, 4.52); Calibrated: 11/05/2012
- Sensor-Surface: 4mm (Mechanical Surface Detection)
- Electronics: DAE3 Sn431; Calibrated: 20/09/2012
- Phantom: SAM 12b (Site 56); Type: SAM 4.0; Serial: TP:1020
- Measurement SW: DASY4, V4.7 Build 53; Postprocessing SW: SEMCAD, V1.8 Build 172

Touch Right Antenna Retracted- Middle/Area Scan (71x121x1): Measurement grid: dx=15mm, dy=15mm

Maximum value of SAR (interpolated) = 0.150 mW/g

Touch Right Antenna Retracted- Middle/Zoom Scan (5x5x7) 2 (5x5x7)/Cube 0: Measurement grid: dx=8mm, dy=8mm, dz=5mm

Reference Value = 3.94 V/m; Power Drift = 0.087 dB

Peak SAR (extrapolated) = 0.411 W/kg

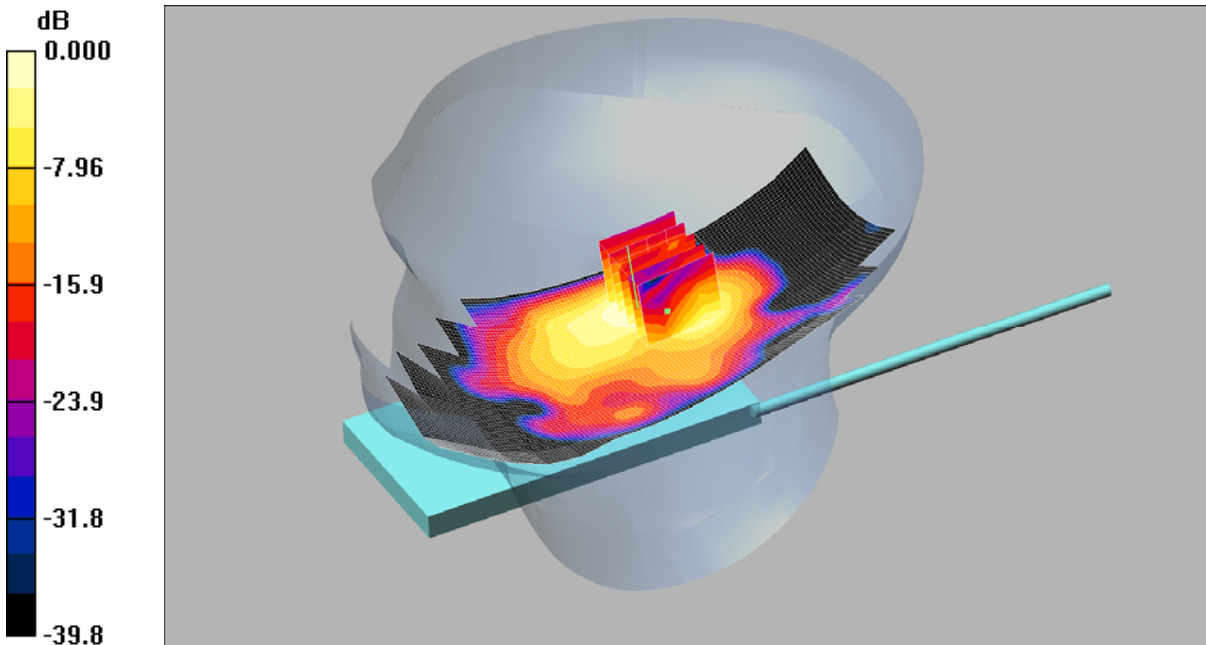
SAR(1 g) = 0.159 mW/g; SAR(10 g) = 0.071 mW/g

Maximum value of SAR (measured) = 0.169 mW/g

SCN/90385JD04/065: Touch Right Antenna Extended 802.11b 1Mbps CH6

Date: 28/11/2012

DUT: NTT Docomo D22BR3 Ant Extended; Type: D22BR3; Serial: 353740050018468



0 dB = 0.185mW/g

Communication System: WLAN; Frequency: 2437 MHz; Duty Cycle: 1:1

Medium: 2450 MHz HSL Medium parameters used (interpolated): $f = 2437$ MHz; $\sigma = 1.86$ mho/m; $\epsilon_r = 38.4$; $\rho = 1000$ kg/m³

Phantom section: Right Section

DASY4 Configuration:

- Probe: ET3DV6 - SN1587; ConvF(4.52, 4.52, 4.52); Calibrated: 11/05/2012

- Sensor-Surface: 4mm (Mechanical Surface Detection)

- Electronics: DAE3 Sn431; Calibrated: 20/09/2012

- Phantom: SAM 12b (Site 56); Type: SAM 4.0; Serial: TP:1020

- Measurement SW: DASY4, V4.7 Build 53; Postprocessing SW: SEMCAD, V1.8 Build 172

Touch Right Antenna Extended- Middle/Area Scan (71x151x1): Measurement grid: dx=15mm, dy=15mm

Maximum value of SAR (interpolated) = 0.199 mW/g

Touch Right Antenna Extended- Middle/Zoom Scan (5x5x7) (5x5x7)/Cube 0: Measurement grid: dx=8mm, dy=8mm, dz=5mm

Reference Value = 3.71 V/m; Power Drift = 0.010 dB

Peak SAR (extrapolated) = 0.386 W/kg

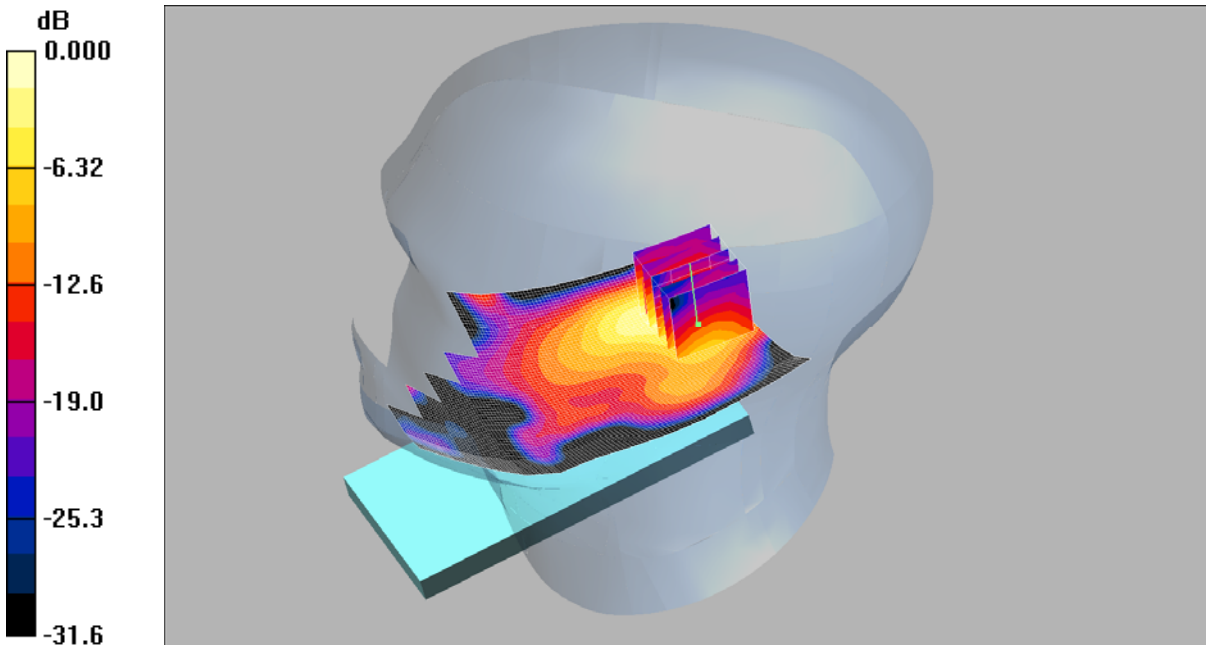
SAR(1 g) = 0.161 mW/g; SAR(10 g) = 0.071 mW/g

Maximum value of SAR (measured) = 0.185 mW/g

SCN/90385JD04/066: Tilt Right Antenna Retracted 802.11b 1Mbps CH6

Date: 28/11/2012

DUT: NTT Docomo; Type: D22BR3; Serial: 353740050018468



0 dB = 0.154mW/g

Communication System: WLAN; Frequency: 2437 MHz; Duty Cycle: 1:1

Medium: 2450 MHz HSL Medium parameters used (interpolated): $f = 2437$ MHz; $\sigma = 1.86$ mho/m; $\epsilon_r = 38.4$; $\rho = 1000$ kg/m³

Phantom section: Right Section

DASY4 Configuration:

- Probe: ET3DV6 - SN1587; ConvF(4.52, 4.52, 4.52); Calibrated: 11/05/2012

- Sensor-Surface: 4mm (Mechanical Surface Detection)

- Electronics: DAE3 Sn431; Calibrated: 20/09/2012

- Phantom: SAM 12b (Site 56); Type: SAM 4.0; Serial: TP:1020

- Measurement SW: DASY4, V4.7 Build 53; Postprocessing SW: SEMCAD, V1.8 Build 172

Tilt Right Antenna Retracted- Middle/Area Scan (71x121x1): Measurement grid: dx=15mm, dy=15mm

Maximum value of SAR (interpolated) = 0.131 mW/g

Tilt Right Antenna Retracted- Middle/Zoom Scan (5x5x7) (5x5x7)/Cube 0: Measurement grid: dx=8mm, dy=8mm, dz=5mm

Reference Value = 3.79 V/m; Power Drift = -0.049 dB

Peak SAR (extrapolated) = 0.356 W/kg

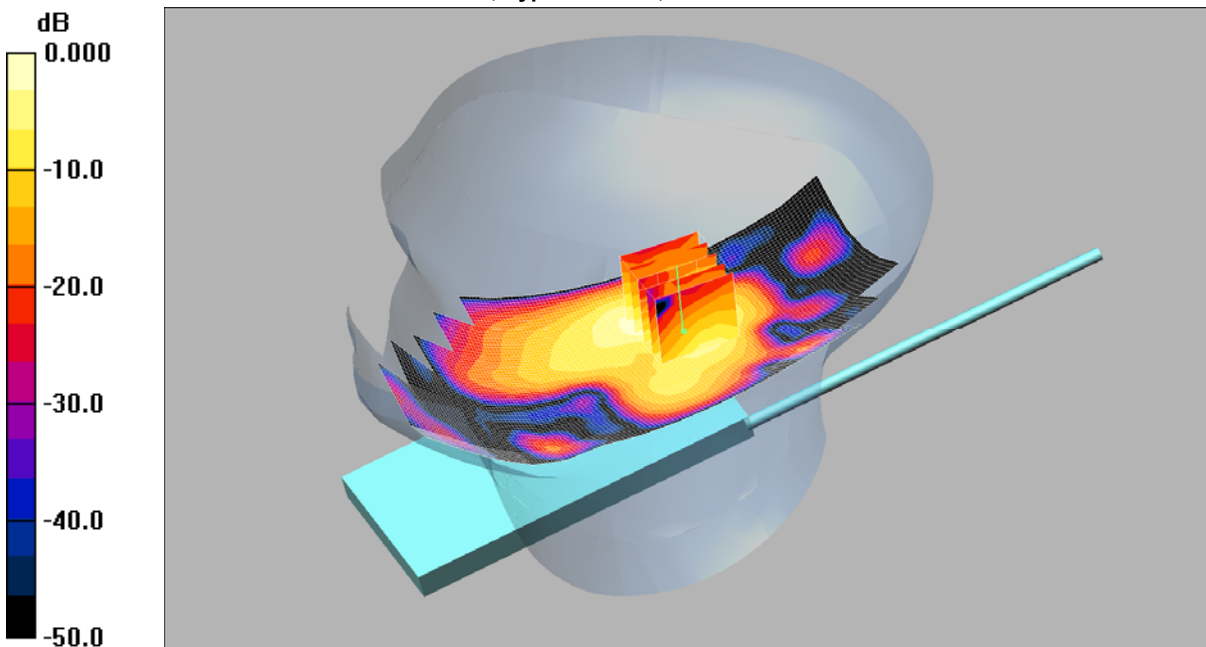
SAR(1 g) = 0.143 mW/g; SAR(10 g) = 0.059 mW/g

Maximum value of SAR (measured) = 0.154 mW/g

SCN/90385JD04/067: Tilt Right Antenna Extended 802.11b 1Mbps CH6

Date: 28/11/2012

DUT: NTT Docomo D22BR3 Ant Extended; Type: D22BR3; Serial: 353740050018468



0 dB = 0.158mW/g

Communication System: WLAN; Frequency: 2437 MHz; Duty Cycle: 1:1

Medium: 2450 MHz HSL Medium parameters used (interpolated): $f = 2437$ MHz; $\sigma = 1.86$ mho/m; $\epsilon_r = 38.4$; $\rho = 1000$ kg/m³

Phantom section: Right Section

DASY4 Configuration:

- Probe: ET3DV6 - SN1587; ConvF(4.52, 4.52, 4.52); Calibrated: 11/05/2012

- Sensor-Surface: 4mm (Mechanical Surface Detection)

- Electronics: DAE3 Sn431; Calibrated: 20/09/2012

- Phantom: SAM 12b (Site 56); Type: SAM 4.0; Serial: TP:1020

- Measurement SW: DASY4, V4.7 Build 53; Postprocessing SW: SEMCAD, V1.8 Build 172

Tilt Right Antenna Extended- Middle/Area Scan (71x151x1): Measurement grid: dx=15mm, dy=15mm

Maximum value of SAR (interpolated) = 0.173 mW/g

Tilt Right Antenna Extended- Middle/Zoom Scan (5x5x7) (5x5x7)/Cube 0: Measurement grid: dx=8mm, dy=8mm, dz=5mm

Reference Value = 4.27 V/m; Power Drift = -0.105 dB

Peak SAR (extrapolated) = 0.333 W/kg

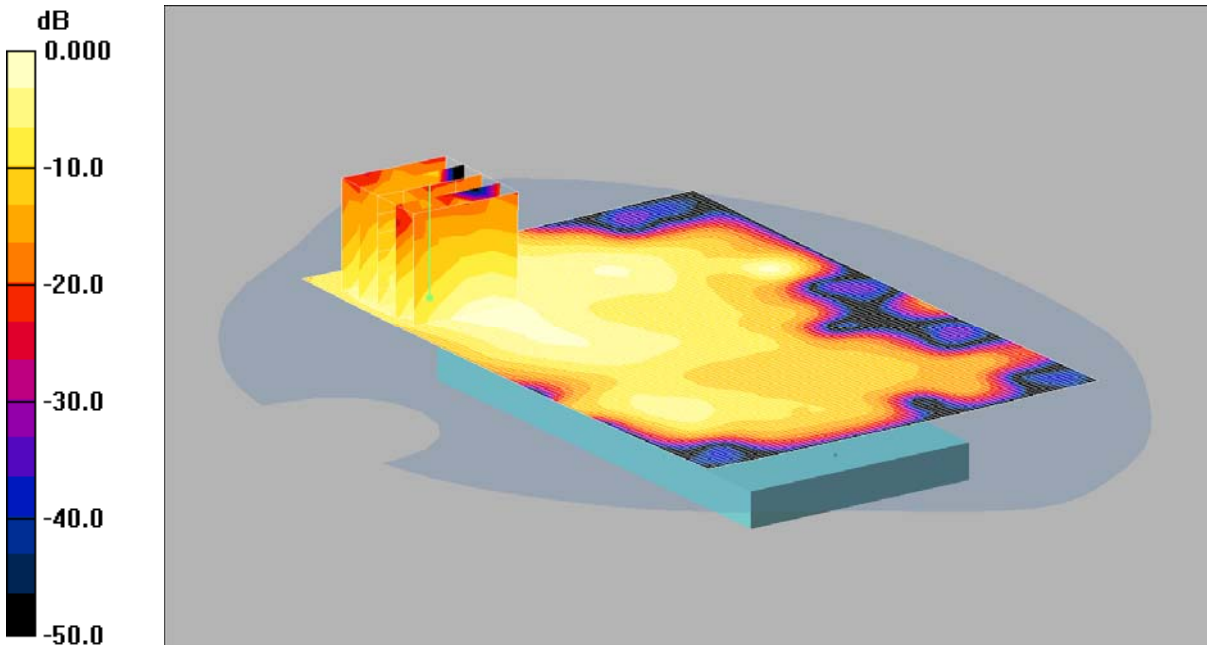
SAR(1 g) = 0.147 mW/g; SAR(10 g) = 0.062 mW/g

Maximum value of SAR (measured) = 0.158 mW/g

SCN/90385JD04/068: Front of EUT Antenna Retracted Facing Phantom 802.11b 1Mbps CH6

Date: 27/11/2012

DUT: NTT Docomo; Type: D22BR3; Serial: 353740050018468



0 dB = 0.029mW/g

Communication System: WLAN; Frequency: 2437 MHz; Duty Cycle: 1:1

Medium: 2450 MHz MSL Medium parameters used (interpolated): $f = 2437$ MHz; $\sigma = 2$ mho/m; $\epsilon_r = 50.6$; $\rho = 1000$ kg/m³

Phantom section: Flat Section

DASY4 Configuration:

- Probe: ET3DV6 - SN1587; ConvF(4.13, 4.13, 4.13); Calibrated: 11/05/2012

- Sensor-Surface: 4mm (Mechanical Surface Detection)

- Electronics: DAE3 Sn431; Calibrated: 20/09/2012

- Phantom: SAM 12a (Site 56); Type: SAM 4.0; Serial: TP:1020

- Measurement SW: DASY4, V4.7 Build 53; Postprocessing SW: SEMCAD, V1.8 Build 172

Front of EUT Facing Phantom- Middle/Area Scan (81x121x1): Measurement grid: dx=15mm, dy=15mm

Maximum value of SAR (interpolated) = 0.028 mW/g

Front of EUT Facing Phantom- Middle/Zoom Scan (5x5x7) 2 (5x5x7)/Cube 0: Measurement grid: dx=8mm, dy=8mm, dz=5mm

Reference Value = 1.95 V/m; Power Drift = 0.002 dB

Peak SAR (extrapolated) = 0.047 W/kg

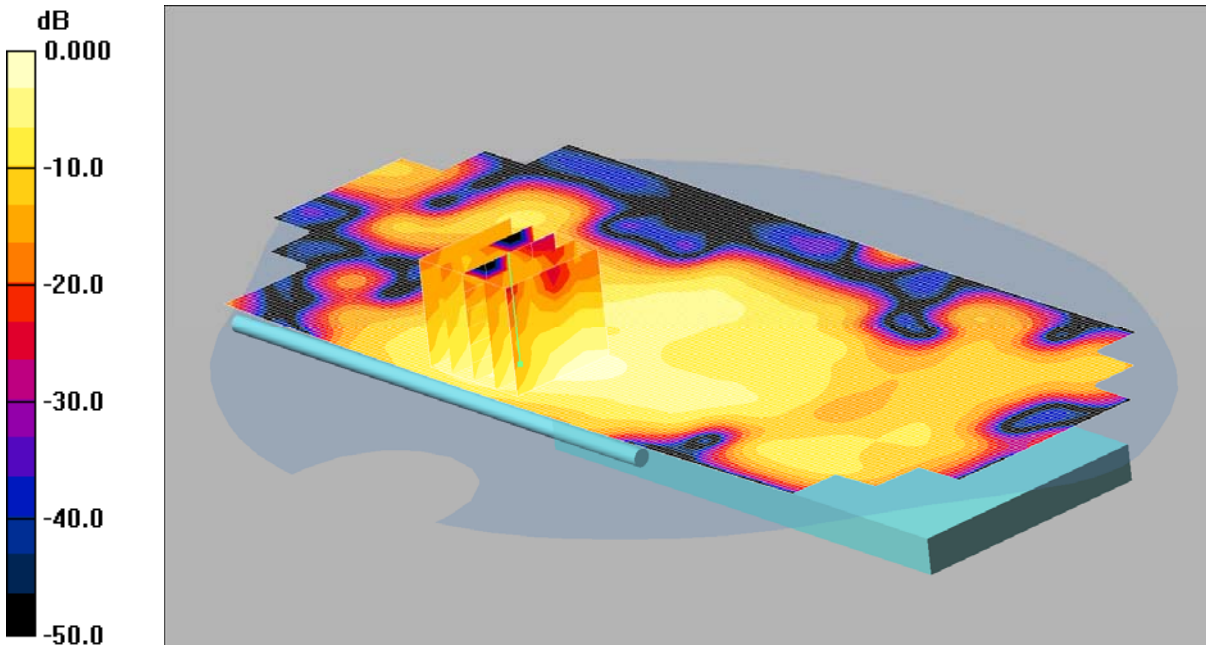
SAR(1 g) = 0.026 mW/g; SAR(10 g) = 0.014 mW/g

Maximum value of SAR (measured) = 0.029 mW/g

SCN/90385JD04/069: Front of EUT Antenna Extended Facing Phantom 802.11B 1Mbps CH6

Date: 27/11/2012

DUT: NTT Docomo D22BR3 Ant Extended; Type: D22BR3; Serial: 353740050018468



0 dB = 0.027mW/g

Communication System: WLAN; Frequency: 2437 MHz; Duty Cycle: 1:1

Medium: 2450 MHz MSL Medium parameters used (interpolated): $f = 2437$ MHz; $\sigma = 2$ mho/m; $\epsilon_r = 50.6$; $\rho = 1000$ kg/m³

Phantom section: Flat Section

DASY4 Configuration:

- Probe: ET3DV6 - SN1587; ConvF(4.13, 4.13, 4.13); Calibrated: 11/05/2012

- Sensor-Surface: 4mm (Mechanical Surface Detection)

- Electronics: DAE3 Sn431; Calibrated: 20/09/2012

- Phantom: SAM 12a (Site 56); Type: SAM 4.0; Serial: TP:1020

- Measurement SW: DASY4, V4.7 Build 53; Postprocessing SW: SEMCAD, V1.8 Build 172

Front of EUT Facing Phantom- Middle/Area Scan (81x181x1): Measurement grid: dx=15mm, dy=15mm

Maximum value of SAR (interpolated) = 0.025 mW/g

Front of EUT Facing Phantom- Middle/Zoom Scan (5x5x7) (5x5x7)/Cube 0: Measurement grid: dx=8mm, dy=8mm, dz=5mm

Reference Value = 1.88 V/m; Power Drift = -0.018 dB

Peak SAR (extrapolated) = 0.052 W/kg

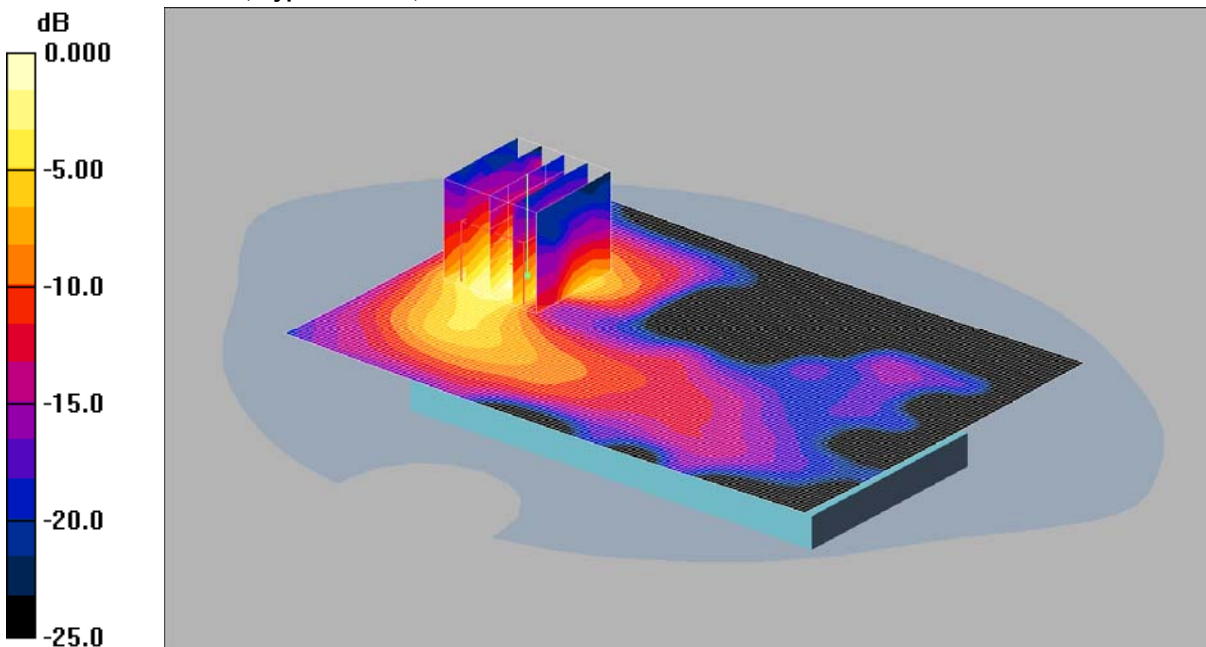
SAR(1 g) = 0.025 mW/g; SAR(10 g) = 0.013 mW/g

Maximum value of SAR (measured) = 0.027 mW/g

SCN/90385JD04/070: Back of EUT Antenna Retracted Facing Phantom 802.11b 1Mbps CH6

Date: 27/11/2012

DUT: NTT Docomo; Type: D22BR3; Serial: 353740050018468



0 dB = 0.092mW/g

Communication System: WLAN; Frequency: 2437 MHz; Duty Cycle: 1:1

Medium: 2450 MHz MSL Medium parameters used (interpolated): $f = 2437$ MHz; $\sigma = 2$ mho/m; $\epsilon_r = 50.6$; $\rho = 1000$ kg/m³

Phantom section: Flat Section

DASY4 Configuration:

- Probe: ET3DV6 - SN1587; ConvF(4.13, 4.13, 4.13); Calibrated: 11/05/2012

- Sensor-Surface: 4mm (Mechanical Surface Detection)

- Electronics: DAE3 Sn431; Calibrated: 20/09/2012

- Phantom: SAM 12a (Site 56); Type: SAM 4.0; Serial: TP:1020

- Measurement SW: DASY4, V4.7 Build 53; Postprocessing SW: SEMCAD, V1.8 Build 172

Back of EUT Facing Phantom- Middle/Area Scan (81x121x1): Measurement grid: dx=15mm, dy=15mm

Maximum value of SAR (interpolated) = 0.085 mW/g

Back of EUT Facing Phantom- Middle/Zoom Scan (5x5x7) (5x5x7)/Cube 0: Measurement grid: dx=8mm, dy=8mm, dz=5mm

Reference Value = 1.51 V/m; Power Drift = 0.031 dB

Peak SAR (extrapolated) = 0.190 W/kg

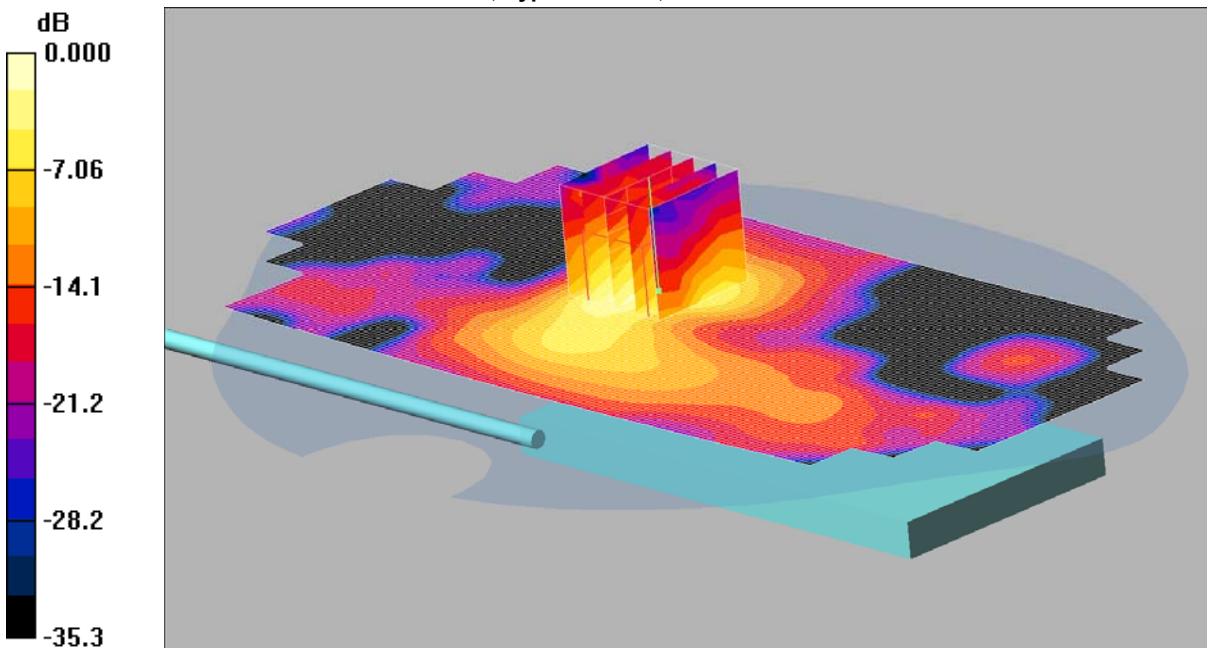
SAR(1 g) = 0.081 mW/g; SAR(10 g) = 0.035 mW/g

Maximum value of SAR (measured) = 0.092 mW/g

SCN/90385JD04/0071: Back of EUT Antenna Extended Facing Phantom 802.11b 1Mbps CH6

Date: 27/11/2012

DUT: NTT Docomo D22BR3 Ant Extended; Type: D22BR3; Serial: 353740050018468



0 dB = 0.107mW/g

Communication System: WLAN; Frequency: 2437 MHz; Duty Cycle: 1:1

Medium: 2450 MHz MSL Medium parameters used (interpolated): f = 2437 MHz; $\sigma = 2$ mho/m; $\epsilon_r = 50.6$; $\rho = 1000$ kg/m³

Phantom section: Flat Section

DASY4 Configuration:

- Probe: ET3DV6 - SN1587; ConvF(4.13, 4.13, 4.13); Calibrated: 11/05/2012
- Sensor-Surface: 4mm (Mechanical Surface Detection)
- Electronics: DAE3 Sn431; Calibrated: 20/09/2012
- Phantom: SAM 12a (Site 56); Type: SAM 4.0; Serial: TP:1020
- Measurement SW: DASY4, V4.7 Build 53; Postprocessing SW: SEMCAD, V1.8 Build 172

Back of EUT Facing Phantom Ant Extended- Middle/Area Scan (81x181x1): Measurement grid: dx=15mm, dy=15mm

Maximum value of SAR (interpolated) = 0.091 mW/g

Back of EUT Facing Phantom Ant Extended- Middle/Zoom Scan (5x5x7) (5x5x7)/Cube 0: Measurement grid: dx=8mm, dy=8mm, dz=5mm

Reference Value = 2.24 V/m; Power Drift = -0.159 dB

Peak SAR (extrapolated) = 0.214 W/kg

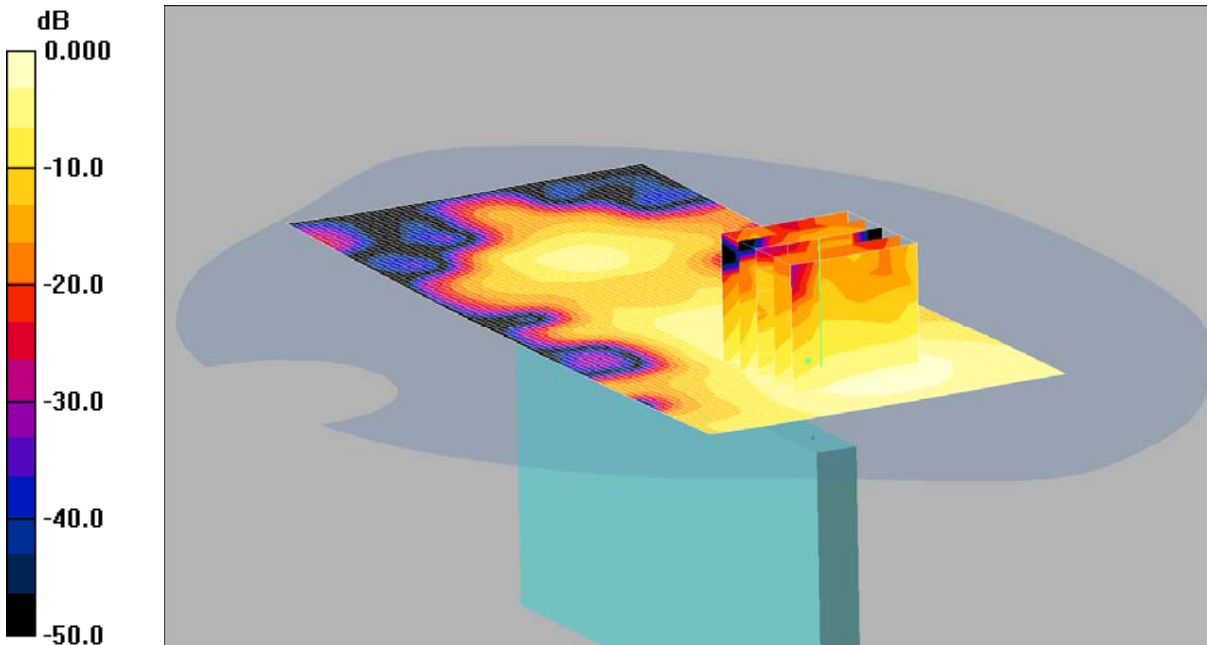
SAR(1 g) = 0.091 mW/g; SAR(10 g) = 0.039 mW/g

Maximum value of SAR (measured) = 0.107 mW/g

SCN/90385JD04/072: Left Hand Side of EUT Antenna Retracted Facing Phantom 802.11b 1Mbps CH6

Date: 27/11/2012

DUT: NTT Docomo; Type: D22BR3; Serial: 353740050018468



0 dB = 0.019mW/g

Communication System: WLAN; Frequency: 2437 MHz; Duty Cycle: 1:1

Medium: 2450 MHz MSL Medium parameters used (interpolated): $f = 2437$ MHz; $\sigma = 2$ mho/m; $\epsilon_r = 50.6$; $\rho = 1000$ kg/m³

Phantom section: Flat Section

DASY4 Configuration:

- Probe: ET3DV6 - SN1587; ConvF(4.13, 4.13, 4.13); Calibrated: 11/05/2012

- Sensor-Surface: 4mm (Mechanical Surface Detection)

- Electronics: DAE3 Sn431; Calibrated: 20/09/2012

- Phantom: SAM 12a (Site 56); Type: SAM 4.0; Serial: TP:1020

- Measurement SW: DASY4, V4.7 Build 53; Postprocessing SW: SEMCAD, V1.8 Build 172

Left Hand Side of EUT Ant Retracted- Middle/Area Scan (61x131x1): Measurement grid: dx=15mm, dy=15mm

Maximum value of SAR (interpolated) = 0.019 mW/g

Left Hand Side of EUT Ant Retracted- Middle/Zoom Scan (5x5x7) 2 (5x5x7)/Cube 0: Measurement grid:

dx=8mm, dy=8mm, dz=5mm

Reference Value = 1.54 V/m; Power Drift = -0.144 dB

Peak SAR (extrapolated) = 0.029 W/kg

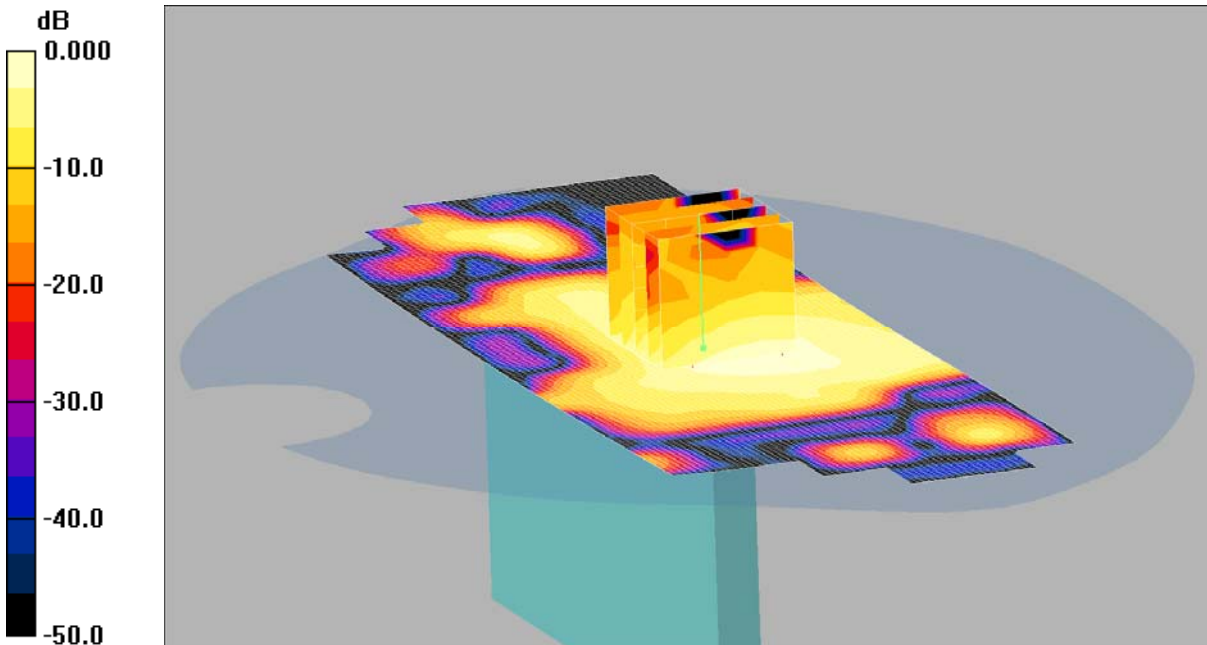
SAR(1 g) = 0.016 mW/g; SAR(10 g) = 0.00695 mW/g

Maximum value of SAR (measured) = 0.019 mW/g

SCN/90385JD04/073: Left Hand Side of EUT Antenna Extended Facing Phantom 802.11b 1Mbps CH6

Date: 27/11/2012

DUT: NTT Docomo D22BR3 Ant Extended; Type: D22BR3; Serial: 353740050018468



0 dB = 0.018mW/g

Communication System: WLAN; Frequency: 2437 MHz; Duty Cycle: 1:1

Medium: 2450 MHz MSL Medium parameters used (interpolated): $f = 2437$ MHz; $\sigma = 2$ mho/m; $\epsilon_r = 50.6$; $\rho = 1000$ kg/m³

Phantom section: Flat Section

DASY4 Configuration:

- Probe: ET3DV6 - SN1587; ConvF(4.13, 4.13, 4.13); Calibrated: 11/05/2012

- Sensor-Surface: 4mm (Mechanical Surface Detection)

- Electronics: DAE3 Sn431; Calibrated: 20/09/2012

- Phantom: SAM 12a (Site 56); Type: SAM 4.0; Serial: TP:1020

- Measurement SW: DASY4, V4.7 Build 53; Postprocessing SW: SEMCAD, V1.8 Build 172

Left Hand Side of EUT Ant Extended - Middle/Area Scan (61x181x1): Measurement grid: dx=15mm, dy=15mm

Maximum value of SAR (interpolated) = 0.020 mW/g

Left Hand Side of EUT Ant Extended - Middle/Zoom Scan (5x5x7) (5x5x7)/Cube 0: Measurement grid:

dx=8mm, dy=8mm, dz=5mm

Reference Value = 3.05 V/m; Power Drift = 0.006 dB

Peak SAR (extrapolated) = 0.036 W/kg

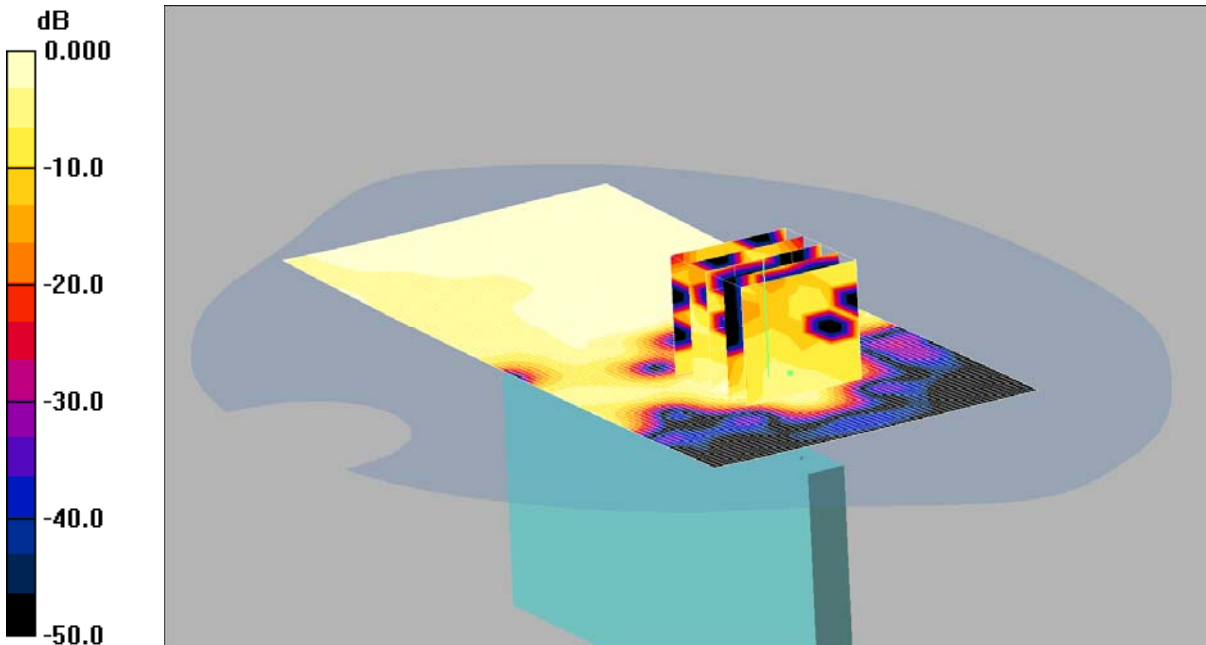
SAR(1 g) = 0.016 mW/g; SAR(10 g) = 0.00843 mW/g

Maximum value of SAR (measured) = 0.018 mW/g

SCN/90385JD04/074: Right Hand Side of EUT Antenna Retracted Facing Phantom 802.11b 1Mbps CH6

Date: 28/11/2012

DUT: NTT Docomo; Type: D22BR3; Serial: 353740050018468



0 dB = 0.004mW/g

Communication System: WLAN; Frequency: 2437 MHz; Duty Cycle: 1:1

Medium: 2450 MHz MSL Medium parameters used (interpolated): $f = 2437$ MHz; $\sigma = 2$ mho/m; $\epsilon_r = 50.6$; $\rho = 1000$ kg/m³

Phantom section: Flat Section

DASY4 Configuration:

- Probe: ET3DV6 - SN1587; ConvF(4.13, 4.13, 4.13); Calibrated: 11/05/2012

- Sensor-Surface: 4mm (Mechanical Surface Detection)

- Electronics: DAE3 Sn431; Calibrated: 20/09/2012

- Phantom: SAM 12a (Site 56); Type: SAM 4.0; Serial: TP:1020

- Measurement SW: DASY4, V4.7 Build 53; Postprocessing SW: SEMCAD, V1.8 Build 172

Right Hand Side of EUT Ant Retracted- Middle/Area Scan (61x131x1): Measurement grid: dx=15mm, dy=15mm

Maximum value of SAR (interpolated) = 0.006 mW/g

Right Hand Side of EUT Ant Retracted- Middle/Zoom Scan (5x5x7) 2 (5x5x7)/Cube 0: Measurement grid:

dx=8mm, dy=8mm, dz=5mm

Reference Value = 0.957 V/m; Power Drift = 0.109 dB

Peak SAR (extrapolated) = 0.009 W/kg

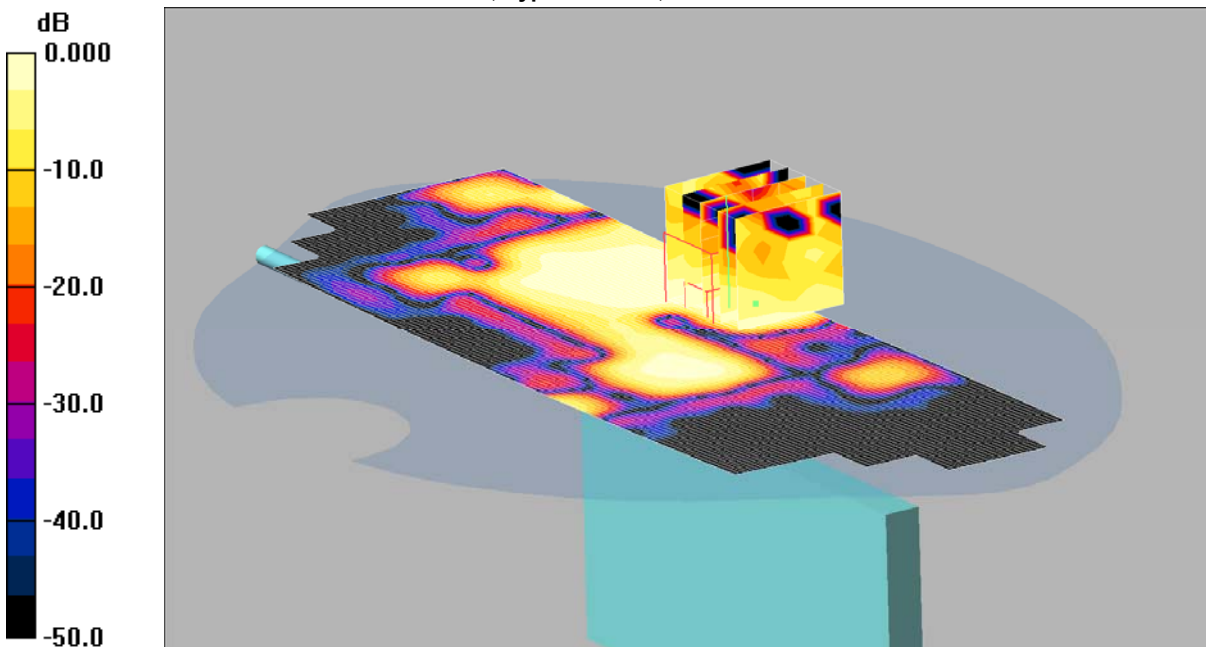
SAR(1 g) = 0.00324 mW/g; SAR(10 g) = 0.00124 mW/g

Maximum value of SAR (measured) = 0.004 mW/g

SCN/90385JD04/075: Right Hand Side of EUT Antenna Extended Facing Phantom 802.11b 1Mbps CH6

Date: 28/11/2012

DUT: NTT Docomo D22BR3 Ant Extended; Type: D22BR3; Serial: 353740050018468



0 dB = 0.004mW/g

Communication System: WLAN; Frequency: 2437 MHz; Duty Cycle: 1:1

Medium: 2450 MHz MSL Medium parameters used (interpolated): $f = 2437$ MHz; $\sigma = 2$ mho/m; $\epsilon_r = 50.6$; $\rho = 1000$ kg/m³

Phantom section: Flat Section

DASY4 Configuration:

- Probe: ET3DV6 - SN1587; ConvF(4.13, 4.13, 4.13); Calibrated: 11/05/2012

- Sensor-Surface: 4mm (Mechanical Surface Detection)

- Electronics: DAE3 Sn431; Calibrated: 20/09/2012

- Phantom: SAM 12a (Site 56); Type: SAM 4.0; Serial: TP:1020

- Measurement SW: DASY4, V4.7 Build 53; Postprocessing SW: SEMCAD, V1.8 Build 172

Right Hand Side of EUT Ant Extended- Middle/Area Scan (61x181x1): Measurement grid: dx=15mm, dy=15mm

Maximum value of SAR (interpolated) = 0.004 mW/g

Right Hand Side of EUT Ant Extended- Middle/Zoom Scan (5x5x7) (5x5x7)/Cube 0: Measurement grid:

dx=8mm, dy=8mm, dz=5mm

Reference Value = 0.819 V/m; Power Drift = 0.154 dB

Peak SAR (extrapolated) = 0.009 W/kg

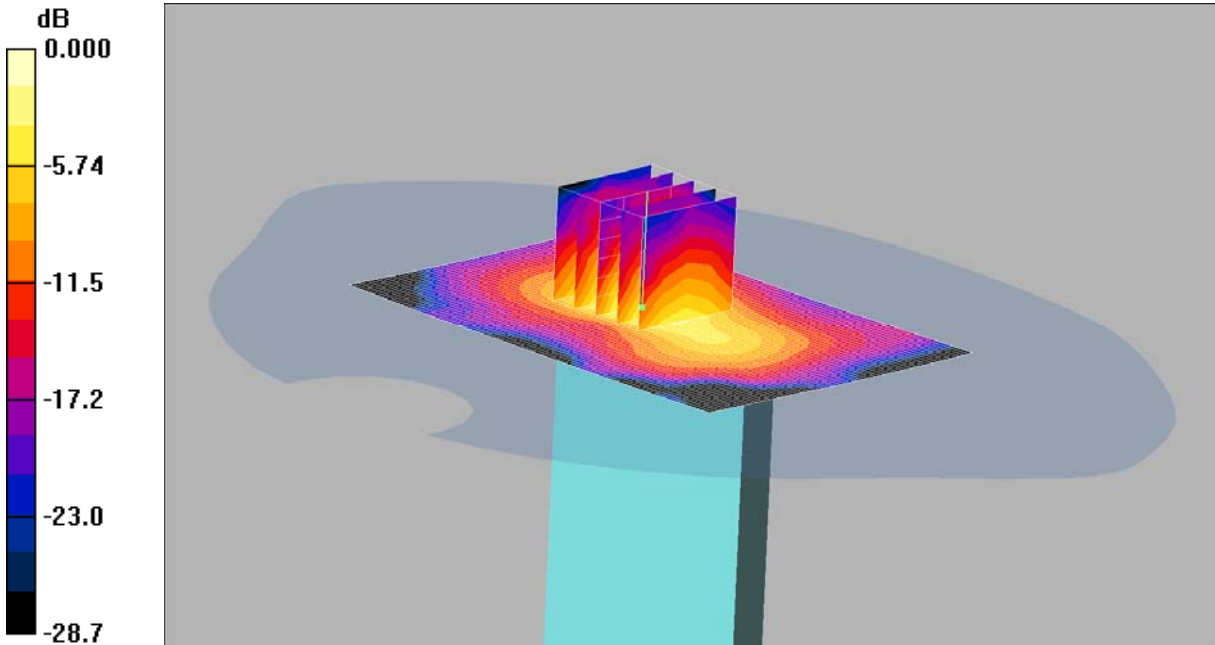
SAR(1 g) = 0.00321 mW/g; SAR(10 g) = 0.00153 mW/g

Maximum value of SAR (measured) = 0.004 mW/g

SCN/90385JD04/076: Top of EUT Antenna Retracted Facing Phantom 802.11b 1Mbps CH6

Date: 28/11/2012

DUT: NTT Docomo; Type: D22BR3; Serial: 353740050018468



0 dB = 0.072mW/g

Communication System: WLAN; Frequency: 2437 MHz; Duty Cycle: 1:1

Medium: 2450 MHz MSL Medium parameters used (interpolated): $f = 2437$ MHz; $\sigma = 2$ mho/m; $\epsilon_r = 50.6$; $\rho = 1000$ kg/m³

Phantom section: Flat Section

DASY4 Configuration:

- Probe: ET3DV6 - SN1587; ConvF(4.13, 4.13, 4.13); Calibrated: 11/05/2012

- Sensor-Surface: 4mm (Mechanical Surface Detection)

- Electronics: DAE3 Sn431; Calibrated: 20/09/2012

- Phantom: SAM 12a (Site 56); Type: SAM 4.0; Serial: TP:1020

- Measurement SW: DASY4, V4.7 Build 53; Postprocessing SW: SEMCAD, V1.8 Build 172

Top of EUT Ant Retracted- Middle/Area Scan (61x91x1): Measurement grid: dx=15mm, dy=15mm

Maximum value of SAR (interpolated) = 0.066 mW/g

Top of EUT Ant Retracted- Middle/Zoom Scan (5x5x7) (5x5x7)/Cube 0: Measurement grid: dx=8mm, dy=8mm, dz=5mm

Reference Value = 3.87 V/m; Power Drift = -0.058 dB

Peak SAR (extrapolated) = 0.128 W/kg

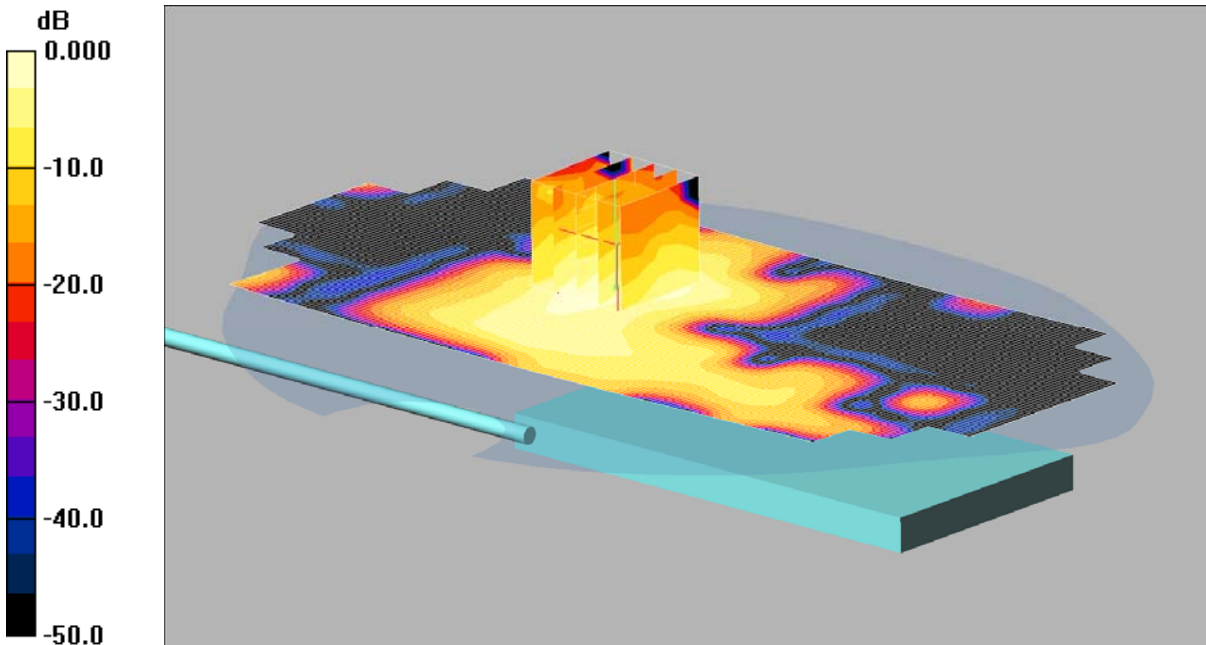
SAR(1 g) = 0.061 mW/g; SAR(10 g) = 0.028 mW/g

Maximum value of SAR (measured) = 0.072 mW/g

SCN/90385JD04/077: Back of EUT Antenna Extended Facing Phantom 802.11b 1Mbps CH6

Date: 28/11/2012

DUT: NTT Docomo D22BR3 Ant Extended; Type: D22BR3; Serial: 353740050018468



0 dB = 0.034mW/g

Communication System: WLAN; Frequency: 2437 MHz; Duty Cycle: 1:1

Medium: 2450 MHz MSL Medium parameters used (interpolated): $f = 2437$ MHz; $\sigma = 2$ mho/m; $\epsilon_r = 50.6$; $\rho = 1000$ kg/m³

Phantom section: Flat Section

DASY4 Configuration:

- Probe: ET3DV6 - SN1587; ConvF(4.13, 4.13, 4.13); Calibrated: 11/05/2012

- Sensor-Surface: 4mm (Mechanical Surface Detection)

- Electronics: DAE3 Sn431; Calibrated: 20/09/2012

- Phantom: SAM 12a (Site 56); Type: SAM 4.0; Serial: TP:1020

- Measurement SW: DASY4, V4.7 Build 53; Postprocessing SW: SEMCAD, V1.8 Build 172

Back of EUT Facing Phantom Ant Extended- Middle/Area Scan (81x181x1): Measurement grid: dx=15mm, dy=15mm

Maximum value of SAR (interpolated) = 0.029 mW/g

Back of EUT Facing Phantom Ant Extended- Middle/Zoom Scan (5x5x7) (5x5x7)/Cube 0: Measurement grid:

dx=8mm, dy=8mm, dz=5mm

Reference Value = 1.46 V/m; Power Drift = -0.041 dB

Peak SAR (extrapolated) = 0.052 W/kg

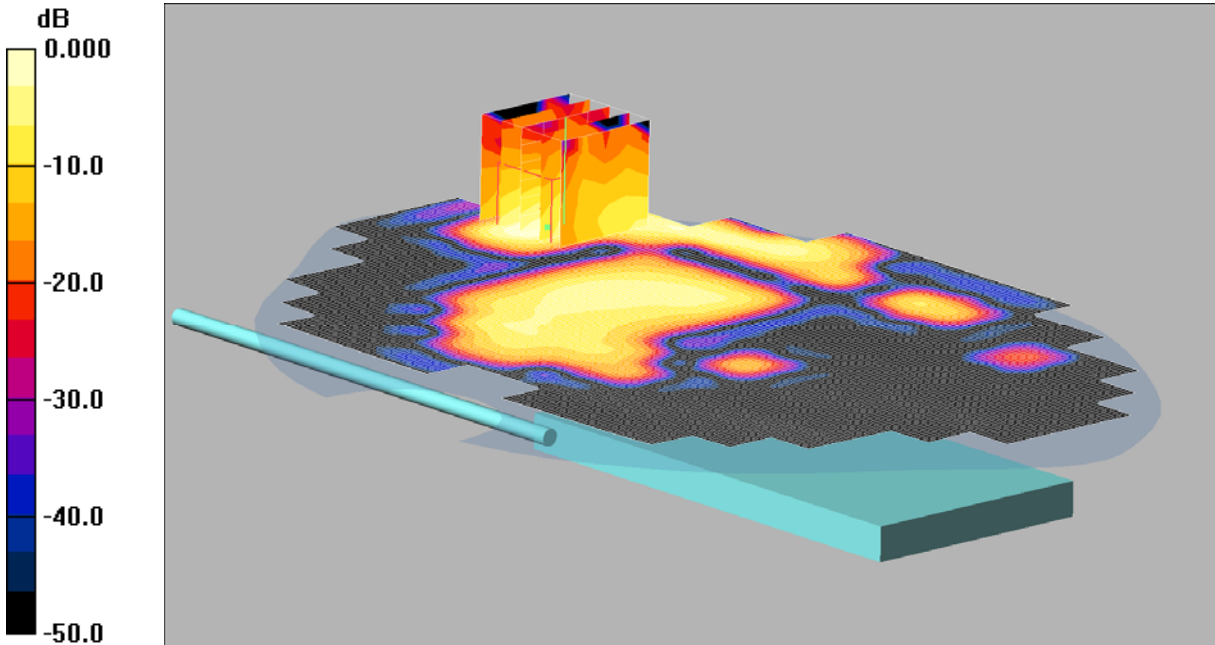
SAR(1 g) = 0.029 mW/g; SAR(10 g) = 0.014 mW/g

Maximum value of SAR (measured) = 0.034 mW/g

SCN/90385JD04/078: Back of EUT Antenna Extended Facing Phantom with PHF 802.11 1Mbps CH6

Date: 28/11/2012

DUT: NTT Docomo D22BR3 Ant Extended; Type: D22BR3; Serial: 353740050018468



0 dB = 0.053mW/g

Communication System: WLAN; Frequency: 2437 MHz; Duty Cycle: 1:1

Medium: 2450 MHz MSL Medium parameters used (interpolated): $f = 2437$ MHz; $\sigma = 2$ mho/m; $\epsilon_r = 50.6$; $\rho = 1000$ kg/m³

Phantom section: Flat Section

DASY4 Configuration:

- Probe: ET3DV6 - SN1587; ConvF(4.13, 4.13, 4.13); Calibrated: 11/05/2012

- Sensor-Surface: 4mm (Mechanical Surface Detection)

- Electronics: DAE3 Sn431; Calibrated: 20/09/2012

- Phantom: SAM 12a (Site 56); Type: SAM 4.0; Serial: TP:1020

- Measurement SW: DASY4, V4.7 Build 53; Postprocessing SW: SEMCAD, V1.8 Build 172

Back of EUT Facing Phantom Ant Extended with PHF- Middle/Area Scan (121x201x1): Measurement grid:

$dx=15$ mm, $dy=15$ mm

Maximum value of SAR (interpolated) = 0.066 mW/g

Back of EUT Facing Phantom Ant Extended with PHF- Middle/Zoom Scan (5x5x7) (5x5x7)/Cube 0:

Measurement grid: $dx=8$ mm, $dy=8$ mm, $dz=5$ mm

Reference Value = 0.650 V/m; Power Drift = -0.091 dB

Peak SAR (extrapolated) = 0.143 W/kg

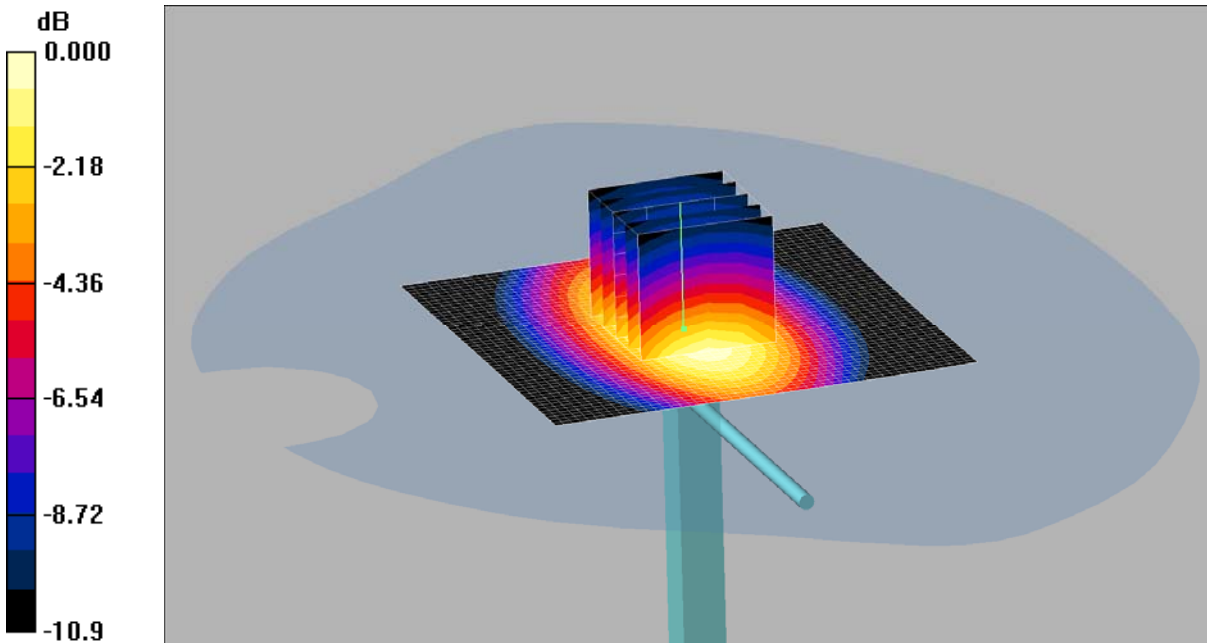
SAR(1 g) = 0.045 mW/g; SAR(10 g) = 0.017 mW/g

Maximum value of SAR (measured) = 0.053 mW/g

SCN/90385JD04/079: System Performance Check 900MHz Head 20 11 12

Date: 20/11/2012

DUT: Dipole 900 MHz; SN: 035; Type: D900V2; Serial: SN035



0 dB = 2.90mW/g

Communication System: CW; Frequency: 900 MHz; Duty Cycle: 1:1

Medium: 900 MHz HSL Medium parameters used: $f = 900 \text{ MHz}$; $\sigma = 0.974 \text{ mho/m}$; $\epsilon_r = 39.9$; $\rho = 1000 \text{ kg/m}^3$

Phantom section: Flat Section

DASY4 Configuration:

- Probe: ET3DV6 - SN1587; ConvF(6.18, 6.18, 6.18); Calibrated: 11/05/2012

- Sensor-Surface: 4mm (Mechanical Surface Detection)

- Electronics: DAE3 Sn431; Calibrated: 20/09/2012

- Phantom: SAM 12b (Site 56); Type: SAM 4.0; Serial: TP:1020

- Measurement SW: DASY4, V4.7 Build 53; Postprocessing SW: SEMCAD, V1.8 Build 172

d=15mm, Pin=250mW/Area Scan (51x51x1): Measurement grid: dx=20mm, dy=20mm

Maximum value of SAR (interpolated) = 2.91 mW/g

d=15mm, Pin=250mW/Zoom Scan (5x5x7) (5x5x7)/Cube 0: Measurement grid: dx=8mm, dy=8mm, dz=5mm

Reference Value = 56.3 V/m; Power Drift = -0.012 dB

Peak SAR (extrapolated) = 3.85 W/kg

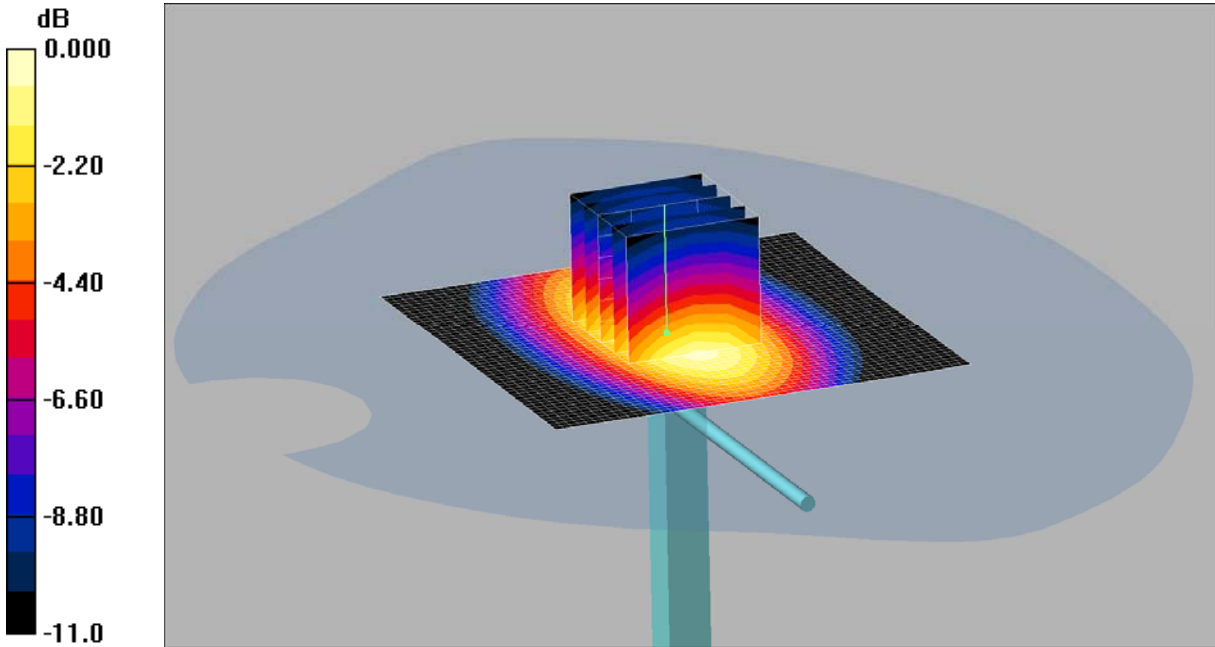
SAR(1 g) = 2.66 mW/g; SAR(10 g) = 1.73 mW/g

Maximum value of SAR (measured) = 2.90 mW/g

SCN/90385JD04/080: System Performance Check 900MHz Head 23 11 12

Date: 23/11/2012

DUT: Dipole 900 MHz; SN: 035; Type: D900V2; Serial: SN035



0 dB = 2.90mW/g

Communication System: CW; Frequency: 900 MHz; Duty Cycle: 1:1

Medium: 900 MHz HSL Medium parameters used: $f = 900 \text{ MHz}$; $\sigma = 0.939 \text{ mho/m}$; $\epsilon_r = 40.5$; $\rho = 1000 \text{ kg/m}^3$

Phantom section: Flat Section

DASY4 Configuration:

- Probe: ET3DV6 - SN1587; ConvF(6.18, 6.18, 6.18); Calibrated: 11/05/2012

- Sensor-Surface: 4mm (Mechanical Surface Detection)

- Electronics: DAE3 Sn431; Calibrated: 20/09/2012

- Phantom: SAM 12b (Site 56); Type: SAM 4.0; Serial: TP:1020

- Measurement SW: DASY4, V4.7 Build 53; Postprocessing SW: SEMCAD, V1.8 Build 172

d=15mm, Pin=250mW/Area Scan (51x51x1): Measurement grid: dx=20mm, dy=20mm

Maximum value of SAR (interpolated) = 2.90 mW/g

d=15mm, Pin=250mW/Zoom Scan (5x5x7) (5x5x7)/Cube 0: Measurement grid: dx=8mm, dy=8mm, dz=5mm

Reference Value = 57.3 V/m; Power Drift = 0.003 dB

Peak SAR (extrapolated) = 3.85 W/kg

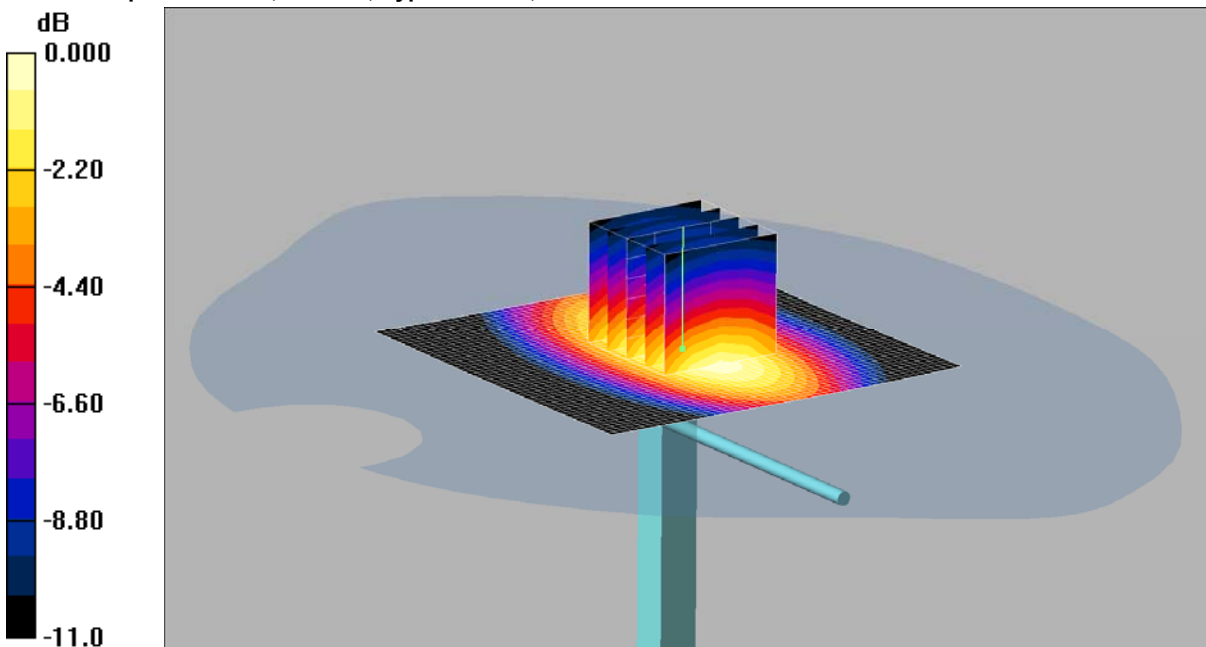
SAR(1 g) = 2.67 mW/g; SAR(10 g) = 1.74 mW/g

Maximum value of SAR (measured) = 2.90 mW/g

SCN/90385JD04/081: System Performance Check 900MHz Head 28 11 12

Date: 28/11/2012

DUT: Dipole 900 MHz; SN: 035; Type: D900V2; Serial: SN035



0 dB = 2.87mW/g

Communication System: CW; Frequency: 900 MHz; Duty Cycle: 1:1

Medium: 900 MHz HSL Medium parameters used: $f = 900 \text{ MHz}$; $\sigma = 0.924 \text{ mho/m}$; $\epsilon_r = 40.5$; $\rho = 1000 \text{ kg/m}^3$

Phantom section: Flat Section

DASY4 Configuration:

- Probe: ET3DV6 - SN1587; ConvF(6.18, 6.18, 6.18); Calibrated: 11/05/2012

- Sensor-Surface: 4mm (Mechanical Surface Detection)

- Electronics: DAE3 Sn431; Calibrated: 20/09/2012

- Phantom: SAM 12a (Site 56); Type: SAM 4.0; Serial: TP:1020

- Measurement SW: DASY4, V4.7 Build 53; Postprocessing SW: SEMCAD, V1.8 Build 172

d=15mm, Pin=250mW/Area Scan (51x51x1): Measurement grid: dx=20mm, dy=20mm

Maximum value of SAR (interpolated) = 2.93 mW/g

d=15mm, Pin=250mW/Zoom Scan (5x5x7) (5x5x7)/Cube 0: Measurement grid: dx=8mm, dy=8mm, dz=5mm

Reference Value = 56.6 V/m; Power Drift = 0.016 dB

Peak SAR (extrapolated) = 3.82 W/kg

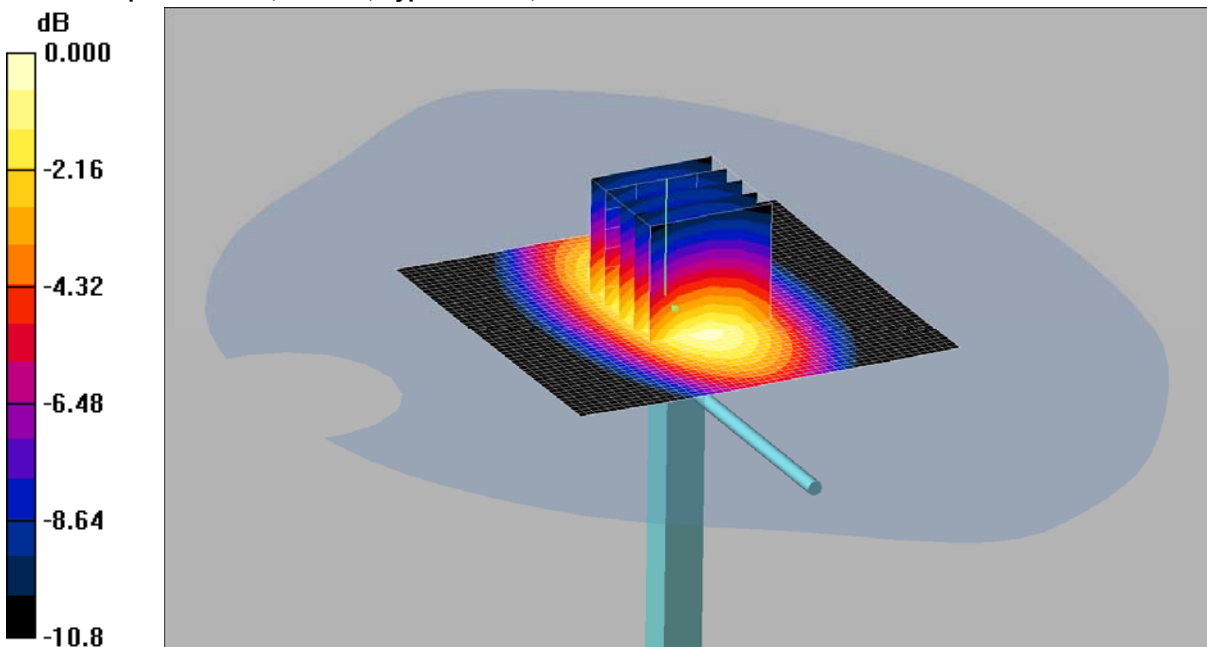
SAR(1 g) = 2.64 mW/g; SAR(10 g) = 1.72 mW/g

Maximum value of SAR (measured) = 2.87 mW/g

SCN/90385JD04/082: System Performance Check 900MHz Body 21 11 12

Date: 21/11/2012

DUT: Dipole 900 MHz; SN: 035; Type: D900V2; Serial: SN035



0 dB = 2.99mW/g

Communication System: CW; Frequency: 900 MHz; Duty Cycle: 1:1

Medium: 900 MHz MSL Medium parameters used: $f = 900 \text{ MHz}$; $\sigma = 1.01 \text{ mho/m}$; $\epsilon_r = 53.7$; $\rho = 1000 \text{ kg/m}^3$

Phantom section: Flat Section

DASY4 Configuration:

- Probe: ET3DV6 - SN1587; ConvF(6.26, 6.26, 6.26); Calibrated: 11/05/2012

- Sensor-Surface: 4mm (Mechanical Surface Detection)

- Electronics: DAE3 Sn431; Calibrated: 20/09/2012

- Phantom: SAM 12a (Site 56); Type: SAM 4.0; Serial: TP:1020

- Measurement SW: DASY4, V4.7 Build 53; Postprocessing SW: SEMCAD, V1.8 Build 172

d=15mm, Pin=250mW/Area Scan (51x51x1): Measurement grid: dx=20mm, dy=20mm

Maximum value of SAR (interpolated) = 3.10 mW/g

d=15mm, Pin=250mW/Zoom Scan (5x5x7) (5x5x7)/Cube 0: Measurement grid: dx=8mm, dy=8mm, dz=5mm

Reference Value = 56.1 V/m; Power Drift = 0.111 dB

Peak SAR (extrapolated) = 3.94 W/kg

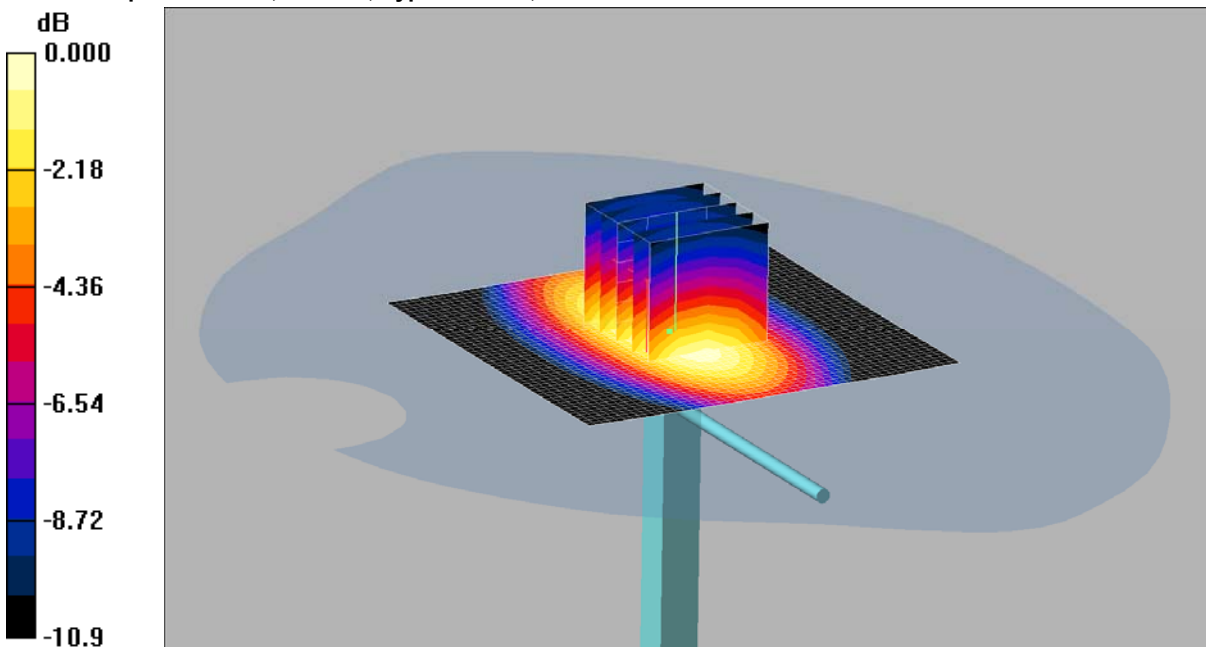
SAR(1 g) = 2.78 mW/g; SAR(10 g) = 1.82 mW/g

Maximum value of SAR (measured) = 2.99 mW/g

SCN/90385JD04/083: System Performance Check 900MHz Body 22 11 12

Date/Time: 22/11/2012 09:33:29

DUT: Dipole 900 MHz; SN: 035; Type: D900V2; Serial: SN035



0 dB = 2.91mW/g

Communication System: CW; Frequency: 900 MHz; Duty Cycle: 1:1

Medium: 900 MHz MSL Medium parameters used: $f = 900 \text{ MHz}$; $\sigma = 1.02 \text{ mho/m}$; $\epsilon_r = 56.2$; $\rho = 1000 \text{ kg/m}^3$

Phantom section: Flat Section

DASY4 Configuration:

- Probe: ET3DV6 - SN1587; ConvF(6.26, 6.26, 6.26); Calibrated: 11/05/2012
- Sensor-Surface: 4mm (Mechanical Surface Detection)
- Electronics: DAE3 Sn431; Calibrated: 20/09/2012
- Phantom: SAM 12a (Site 56); Type: SAM 4.0; Serial: TP:1020
- Measurement SW: DASY4, V4.7 Build 53; Postprocessing SW: SEMCAD, V1.8 Build 172

d=15mm, Pin=250mW/Area Scan (51x51x1): Measurement grid: dx=20mm, dy=20mm

Maximum value of SAR (interpolated) = 3.07 mW/g

d=15mm, Pin=250mW/Zoom Scan (5x5x7) (5x5x7)/Cube 0: Measurement grid: dx=8mm, dy=8mm, dz=5mm

Reference Value = 55.5 V/m; Power Drift = 0.050 dB

Peak SAR (extrapolated) = 3.88 W/kg

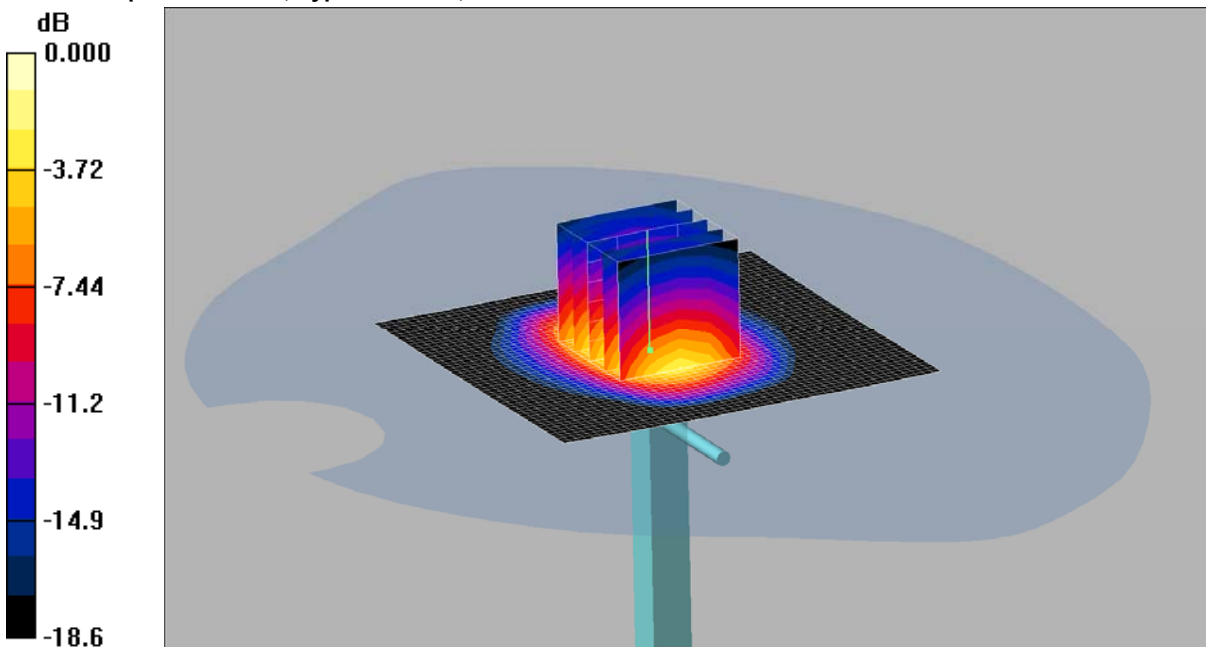
SAR(1 g) = 2.72 mW/g; SAR(10 g) = 1.78 mW/g

Maximum value of SAR (measured) = 2.91 mW/g

SCN/90385JD04/084: System Performance Check 1900MHz Head 23 11 12

Date: 23/11/2012

DUT: Dipole 1900 MHz; Type: D1900V2; Serial: SN540



0 dB = 11.2mW/g

Communication System: CW; Frequency: 1900 MHz; Duty Cycle: 1:1

Medium: 1900 MHz HSL Medium parameters used: $f = 1900$ MHz; $\sigma = 1.43$ mho/m; $\epsilon_r = 41.4$; $\rho = 1000$ kg/m³

Phantom section: Flat Section

DASY4 Configuration:

- Probe: ET3DV6 - SN1587; ConvF(5.18, 5.18, 5.18); Calibrated: 11/05/2012

- Sensor-Surface: 4mm (Mechanical Surface Detection)

- Electronics: DAE3 Sn431; Calibrated: 20/09/2012

- Phantom: SAM 12a (Site 56); Type: SAM 4.0; Serial: TP:1020

- Measurement SW: DASY4, V4.7 Build 53; Postprocessing SW: SEMCAD, V1.8 Build 172

d=10mm, Pin=250mW/Area Scan (51x51x1): Measurement grid: dx=20mm, dy=20mm

Maximum value of SAR (interpolated) = 14.8 mW/g

d=10mm, Pin=250mW/Zoom Scan (5x5x7) (5x5x7)/Cube 0: Measurement grid: dx=8mm, dy=8mm, dz=5mm

Reference Value = 87.9 V/m; Power Drift = 0.163 dB

Peak SAR (extrapolated) = 18.5 W/kg

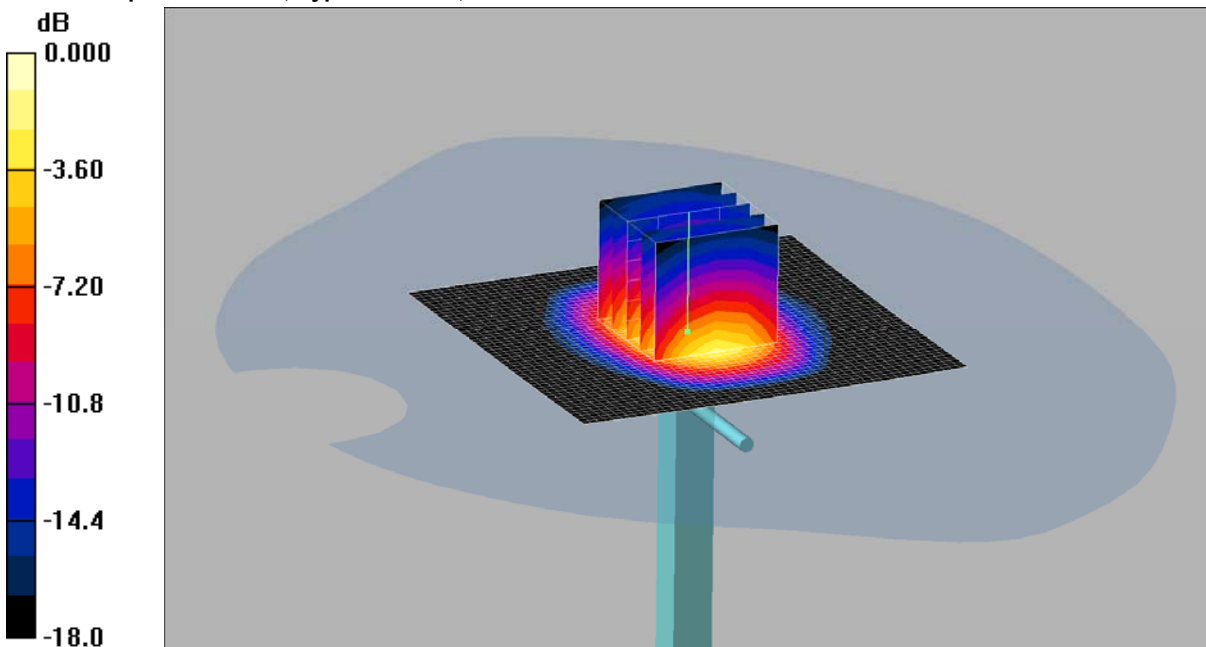
SAR(1 g) = 10 mW/g; SAR(10 g) = 5.19 mW/g

Maximum value of SAR (measured) = 11.2 mW/g

SCN/90385JD04/085: System Performance Check 1900MHz Head 26 11 12

Date: 26/11/2012

DUT: Dipole 1900 MHz; Type: D1900V2; Serial: SN540



0 dB = 11.7mW/g

Communication System: CW; Frequency: 1900 MHz; Duty Cycle: 1:1

Medium: 1900 MHz HSL Medium parameters used: $f = 1900 \text{ MHz}$; $\sigma = 1.44 \text{ mho/m}$; $\epsilon_r = 41.7$; $\rho = 1000 \text{ kg/m}^3$

Phantom section: Flat Section

DASY4 Configuration:

- Probe: ET3DV6 - SN1587; ConvF(5.18, 5.18, 5.18); Calibrated: 11/05/2012

- Sensor-Surface: 4mm (Mechanical Surface Detection)

- Electronics: DAE3 Sn431; Calibrated: 20/09/2012

- Phantom: SAM 12a (Site 56); Type: SAM 4.0; Serial: TP:1020

- Measurement SW: DASY4, V4.7 Build 53; Postprocessing SW: SEMCAD, V1.8 Build 172

d=10mm, Pin=250mW/Area Scan (51x51x1): Measurement grid: dx=20mm, dy=20mm

Maximum value of SAR (interpolated) = 16.3 mW/g

d=10mm, Pin=250mW/Zoom Scan (5x5x7) (5x5x7)/Cube 0: Measurement grid: dx=8mm, dy=8mm, dz=5mm

Reference Value = 93.3 V/m; Power Drift = 0.071 dB

Peak SAR (extrapolated) = 19.4 W/kg

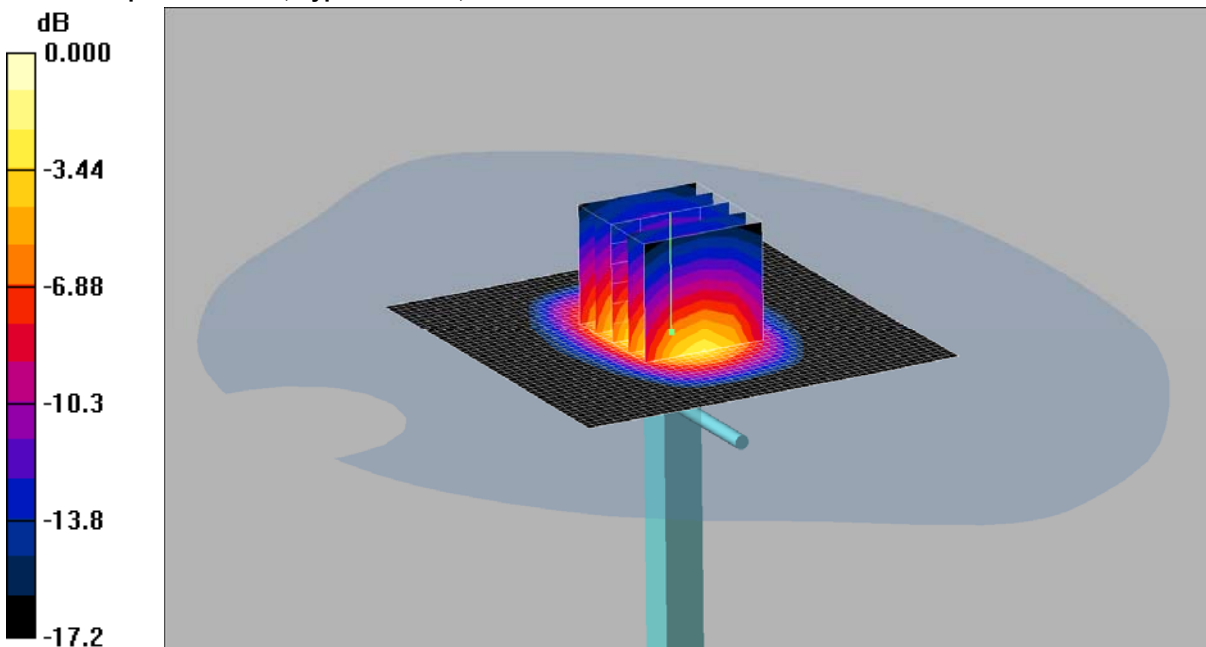
SAR(1 g) = 10.5 mW/g; SAR(10 g) = 5.44 mW/g

Maximum value of SAR (measured) = 11.7 mW/g

SCN/90385JD04/086: System Performance Check 1900MHz Body 26 11 12

Date: 26/11/2012

DUT: Dipole 1900 MHz; Type: D1900V2; Serial: SN540



0 dB = 11.1mW/g

Communication System: CW; Frequency: 1900 MHz; Duty Cycle: 1:1

Medium: 1900 MHz MSL Medium parameters used: $f = 1900$ MHz; $\sigma = 1.58$ mho/m; $\epsilon_r = 52.1$; $\rho = 1000$ kg/m³

Phantom section: Flat Section

DASY4 Configuration:

- Probe: ET3DV6 - SN1587; ConvF(4.69, 4.69, 4.69); Calibrated: 11/05/2012

- Sensor-Surface: 4mm (Mechanical Surface Detection)

- Electronics: DAE3 Sn431; Calibrated: 20/09/2012

- Phantom: SAM 12b (Site 56); Type: SAM 4.0; Serial: TP:1020

- Measurement SW: DASY4, V4.7 Build 53; Postprocessing SW: SEMCAD, V1.8 Build 172

d=10mm, Pin=250mW/Area Scan (51x51x1): Measurement grid: dx=20mm, dy=20mm

Maximum value of SAR (interpolated) = 15.9 mW/g

d=10mm, Pin=250mW/Zoom Scan (5x5x7) (5x5x7)/Cube 0: Measurement grid: dx=8mm, dy=8mm, dz=5mm

Reference Value = 90.9 V/m; Power Drift = -0.044 dB

Peak SAR (extrapolated) = 16.0 W/kg

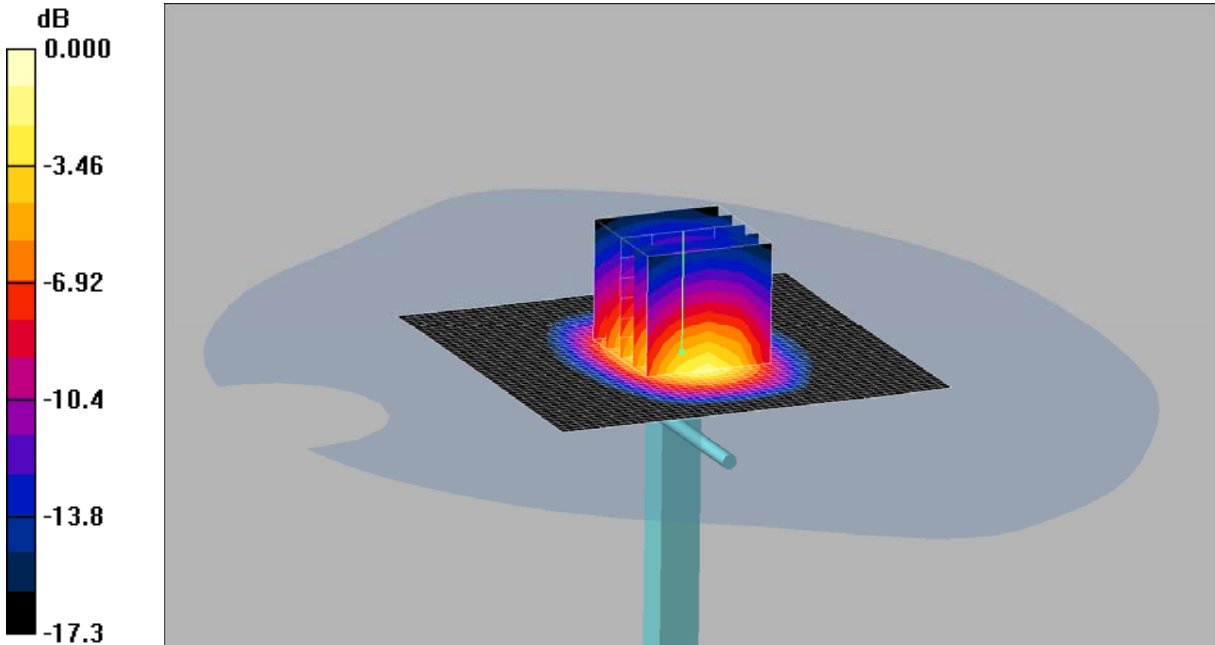
SAR(1 g) = 9.78 mW/g; SAR(10 g) = 5.22 mW/g

Maximum value of SAR (measured) = 11.1 mW/g

SCN/90385JD04/087: System Performance Check 1900MHz Body 27 11 12

Date: 27/11/2012

DUT: Dipole 1900 MHz; Type: D1900V2; Serial: SN540



0 dB = 11.4mW/g

Communication System: CW; Frequency: 1900 MHz; Duty Cycle: 1:1

Medium: 1900 MHz MSL Medium parameters used: $f = 1900 \text{ MHz}$; $\sigma = 1.58 \text{ mho/m}$; $\epsilon_r = 52.1$; $\rho = 1000 \text{ kg/m}^3$

Phantom section: Flat Section

DASY4 Configuration:

- Probe: ET3DV6 - SN1587; ConvF(4.69, 4.69, 4.69); Calibrated: 11/05/2012

- Sensor-Surface: 4mm (Mechanical Surface Detection)

- Electronics: DAE3 Sn431; Calibrated: 20/09/2012

- Phantom: SAM 12b (Site 56); Type: SAM 4.0; Serial: TP:1020

- Measurement SW: DASY4, V4.7 Build 53; Postprocessing SW: SEMCAD, V1.8 Build 172

d=10mm, Pin=250mW/Area Scan (51x51x1): Measurement grid: dx=20mm, dy=20mm

Maximum value of SAR (interpolated) = 15.5 mW/g

d=10mm, Pin=250mW/Zoom Scan (5x5x7) (5x5x7)/Cube 0: Measurement grid: dx=8mm, dy=8mm, dz=5mm

Reference Value = 91.1 V/m; Power Drift = -0.005 dB

Peak SAR (extrapolated) = 16.2 W/kg

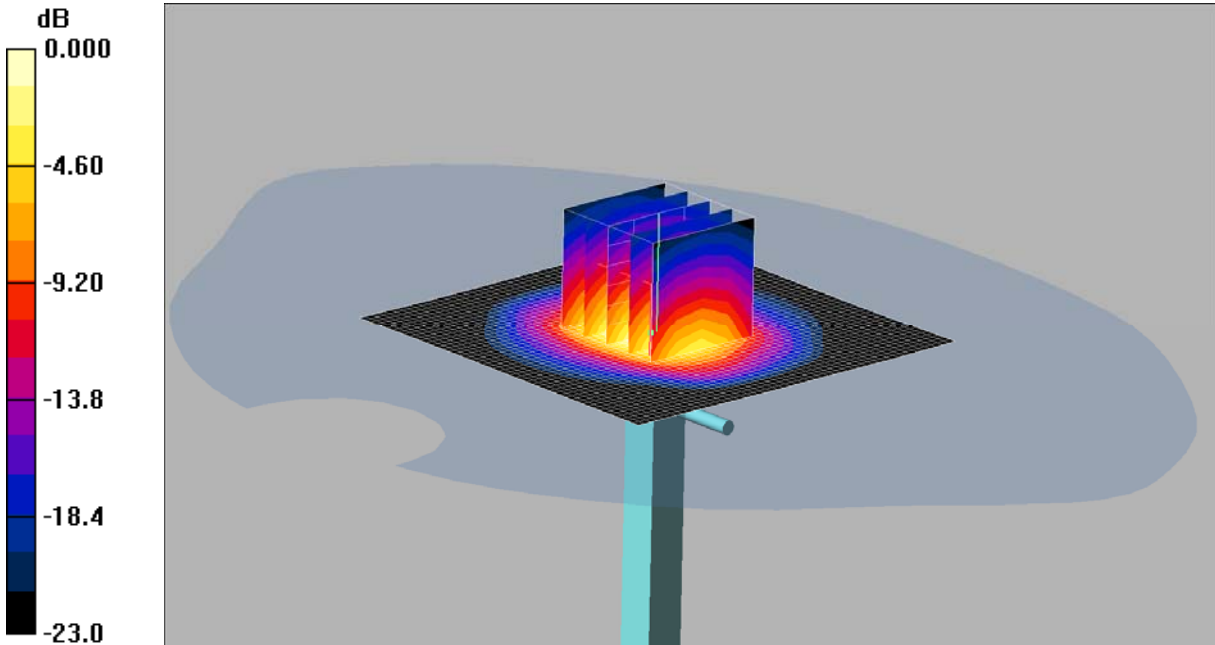
SAR(1 g) = 10.1 mW/g; SAR(10 g) = 5.36 mW/g

Maximum value of SAR (measured) = 11.4 mW/g

SCN/90385JD04/088: System Performance Check 2450MHz Head 28 11 12

Date: 28/11/2012

DUT: Dipole 2450 MHz; Type: D2450V2; Serial: D2450V2 - SN:725



0 dB = 14.6mW/g

Communication System: CW; Frequency: 2450 MHz; Duty Cycle: 1:1

Medium: 2450 MHz HSL Medium parameters used: $f = 2450$ MHz; $\sigma = 1.88$ mho/m; $\epsilon_r = 38.4$; $\rho = 1000$ kg/m³

Phantom section: Flat Section

DASY4 Configuration:

- Probe: ET3DV6 - SN1587; ConvF(4.52, 4.52, 4.52); Calibrated: 11/05/2012

- Sensor-Surface: 4mm (Mechanical Surface Detection)

- Electronics: DAE3 Sn431; Calibrated: 20/09/2012

- Phantom: SAM 12b (Site 56); Type: SAM 4.0; Serial: TP:1020

- Measurement SW: DASY4, V4.7 Build 53; Postprocessing SW: SEMCAD, V1.8 Build 172

d=10mm, Pin=250mW 2/Area Scan (51x51x1): Measurement grid: dx=20mm, dy=20mm

Maximum value of SAR (interpolated) = 20.3 mW/g

d=10mm, Pin=250mW 2/Zoom Scan (5x5x7) (5x5x7)/Cube 0: Measurement grid: dx=8mm, dy=8mm, dz=5mm

Reference Value = 92.4 V/m; Power Drift = -0.076 dB

Peak SAR (extrapolated) = 27.6 W/kg

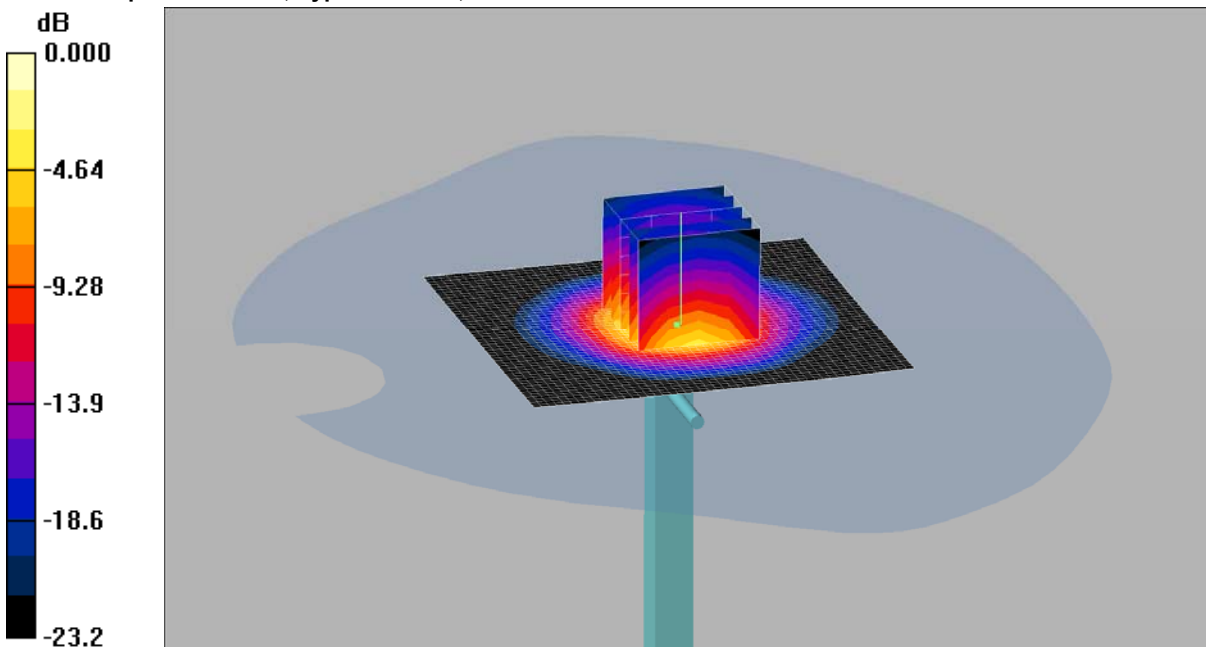
SAR(1 g) = 13 mW/g; SAR(10 g) = 6.03 mW/g

Maximum value of SAR (measured) = 14.6 mW/g

SCN/90385JD04/089: System Performance Check 2450MHz Body 27 11 12

Date: 27/11/2012

DUT: Dipole 2450 MHz; Type: D2450V2; Serial: D2450V2 - SN:725



0 dB = 13.8mW/g

Communication System: CW; Frequency: 2450 MHz; Duty Cycle: 1:1

Medium: 2450 MHz MSL Medium parameters used: $f = 2450$ MHz; $\sigma = 2.01$ mho/m; $\epsilon_r = 50.6$; $\rho = 1000$ kg/m³

Phantom section: Flat Section

DASY4 Configuration:

- Probe: ET3DV6 - SN1587; ConvF(4.13, 4.13, 4.13); Calibrated: 11/05/2012

- Sensor-Surface: 4mm (Mechanical Surface Detection)

- Electronics: DAE3 Sn431; Calibrated: 20/09/2012

- Phantom: SAM 12a (Site 56); Type: SAM 4.0; Serial: TP:1020

- Measurement SW: DASY4, V4.7 Build 53; Postprocessing SW: SEMCAD, V1.8 Build 172

d=10mm, Pin=250mW/Area Scan (51x51x1): Measurement grid: dx=20mm, dy=20mm

Maximum value of SAR (interpolated) = 17.2 mW/g

d=10mm, Pin=250mW/Zoom Scan (5x5x7) (5x5x7)/Cube 0: Measurement grid: dx=8mm, dy=8mm, dz=5mm

Reference Value = 86.0 V/m; Power Drift = -0.009 dB

Peak SAR (extrapolated) = 27.4 W/kg

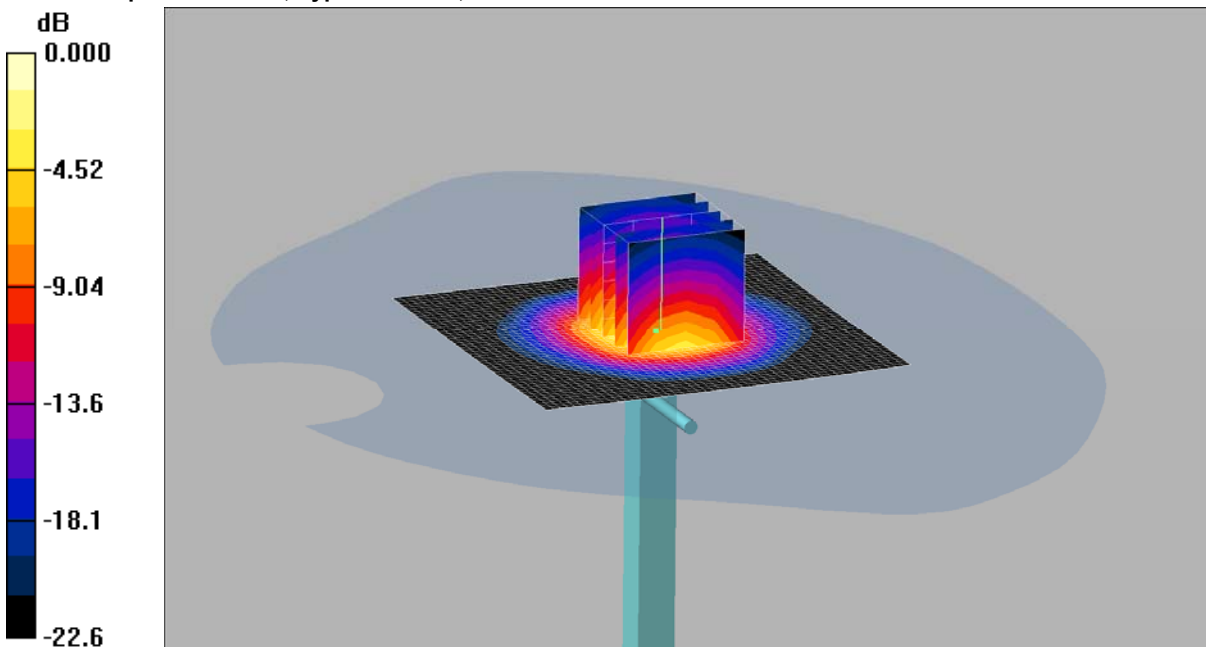
SAR(1 g) = 12.5 mW/g; SAR(10 g) = 5.78 mW/g

Maximum value of SAR (measured) = 13.8 mW/g

SCN/90385JD04/090: System Performance Check 2450MHz Body 28 11 12

Date: 28/11/2012

DUT: Dipole 2450 MHz; Type: D2450V2; Serial: D2450V2 - SN:725



0 dB = 14.4mW/g

Communication System: CW; Frequency: 2450 MHz; Duty Cycle: 1:1

Medium: 2450 MHz MSL Medium parameters used: $f = 2450$ MHz; $\sigma = 2.01$ mho/m; $\epsilon_r = 50.6$; $\rho = 1000$ kg/m³

Phantom section: Flat Section

DASY4 Configuration:

- Probe: ET3DV6 - SN1587; ConvF(4.13, 4.13, 4.13); Calibrated: 11/05/2012

- Sensor-Surface: 4mm (Mechanical Surface Detection)

- Electronics: DAE3 Sn431; Calibrated: 20/09/2012

- Phantom: SAM 12a (Site 56); Type: SAM 4.0; Serial: TP:1020

- Measurement SW: DASY4, V4.7 Build 53; Postprocessing SW: SEMCAD, V1.8 Build 172

d=10mm, Pin=250mW/Area Scan (51x51x1): Measurement grid: dx=20mm, dy=20mm

Maximum value of SAR (interpolated) = 18.2 mW/g

d=10mm, Pin=250mW/Zoom Scan (5x5x7) (5x5x7)/Cube 0: Measurement grid: dx=8mm, dy=8mm, dz=5mm

Reference Value = 88.7 V/m; Power Drift = -0.077 dB

Peak SAR (extrapolated) = 28.3 W/kg

SAR(1 g) = 13.1 mW/g; SAR(10 g) = 6.08 mW/g

Maximum value of SAR (measured) = 14.4 mW/g