

## Appendix 4. Photographs

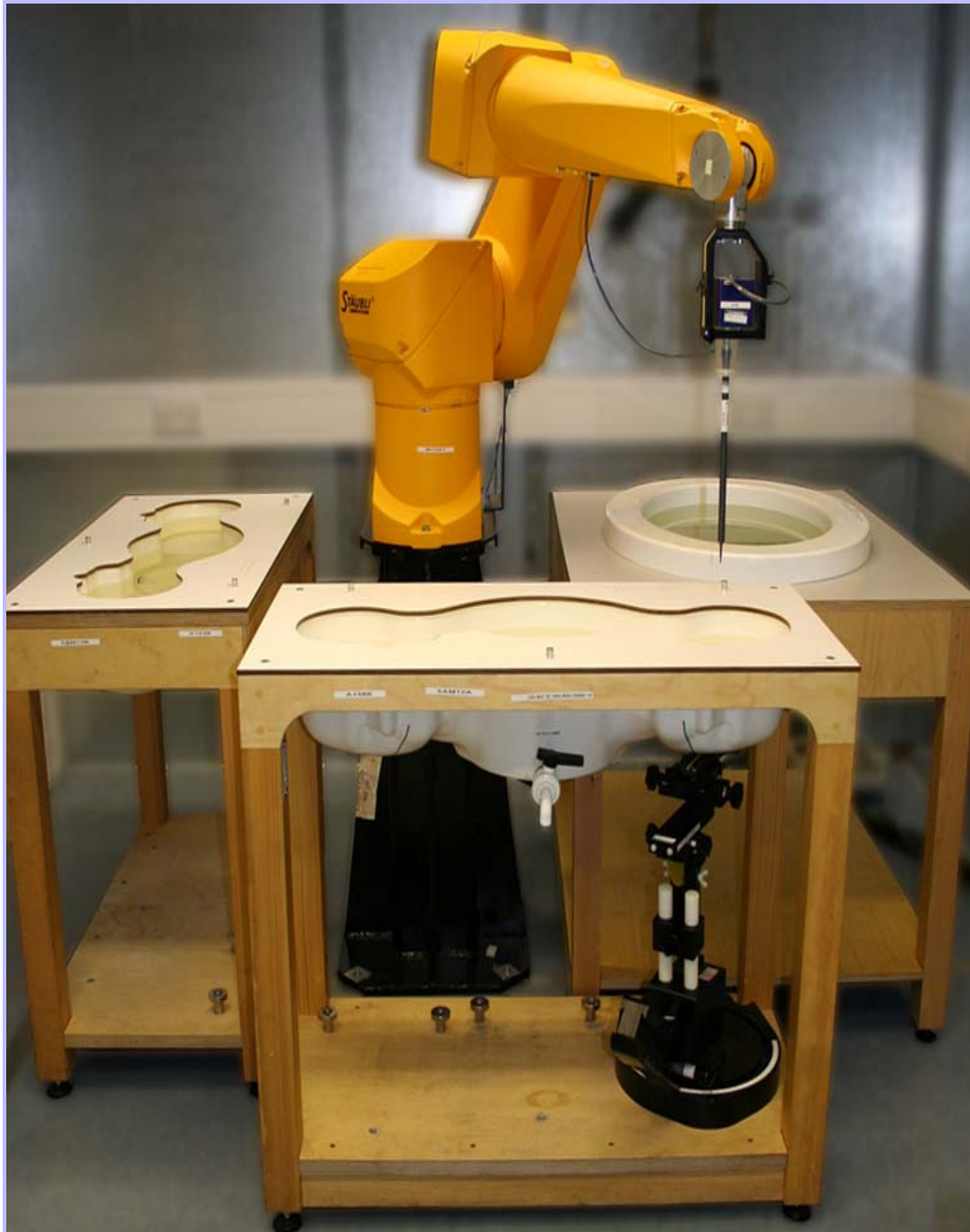
This appendix contains the following photographs:

| Photo Reference Number | Title   |
|------------------------|---|
| PHT/81001JD16/001      | Test configuration for the measurement of Specific Absorption Rate (SAR)              |
| PHT/81001JD16/002      | Touch Left Slide Closed With Antenna Retracted  |
| PHT/81001JD16/003      | Touch Left Slide Closed With Antenna Extended   |
| PHT/81001JD16/004      | Touch Left Slide Open With Antenna Retracted  |
| PHT/81001JD16/005      | Touch Left Slide Open With Antenna Extended   |
| PHT/81001JD16/006      | Tilt Left Slide Closed With Antenna Retracted   |
| PHT/81001JD16/007      | Tilt Left Slide Closed With Antenna Extended  |
| PHT/81001JD16/008      | Tilt Left Slide Open With Antenna Retracted   |
| PHT/81001JD16/009      | Tilt Left Slide Open With Antenna Extended  |
| PHT/81001JD16/010      | Touch Right Slide Closed With Antenna Retracted                                       |
| PHT/81001JD16/011      | Touch Right Slide Closed With Antenna Extended  |
| PHT/81001JD16/012      | Touch Right Slide Open With Antenna Retracted   |
| PHT/81001JD16/013      | Touch Right Slide Open With Antenna Extended  |
| PHT/81001JD16/014      | Tilt Right Slide Closed With Antenna Retracted  |
| PHT/81001JD16/015      | Tilt Right Slide Closed With Antenna Extended   |
| PHT/81001JD16/016      | Tilt Right Slide Open With Antenna Retracted  |
| PHT/81001JD16/017      | Tilt Right Slide Open With Antenna Extended   |
| PHT/81001JD16/018      | Front of EUT Facing Phantom With Slide Closed Antenna Retracted                       |
| PHT/81001JD16/019      | Front of EUT Facing Phantom With Slide Closed Antenna Extended                        |
| PHT/81001JD16/020      | Front of EUT Facing Phantom With Slide Open Antenna Retracted                         |
| PHT/81001JD16/021      | Front of EUT Facing Phantom With Slide Open Antenna Extended                          |
| PHT/81001JD16/022      | Rear of EUT Facing Phantom With Slide Closed Antenna Retracted                        |
| PHT/81001JD16/023      | Rear of EUT Facing Phantom With Slide Closed Antenna Extended                         |
| PHT/81001JD16/024      | Rear of EUT Facing Phantom With Slide Open Antenna Retracted                          |
| PHT/81001JD16/025      | Rear of EUT Facing Phantom With Slide Open Antenna Extended                           |
| PHT/81001JD16/026      | General Setup With PHF of Front EUT Facing Phantom With Slide Open Antenna Extended   |
| PHT/81001JD16/027      | General Setup With PHF of Rear EUT Facing Phantom With Slide Closed Antenna Retracted |
| PHT/81001JD16/028      | Rear of EUT Facing Phantom With Slide Closed Antenna Retracted (WLAN Testing Setup)   |
| PHT/81001JD16/029      | Rear of EUT Facing Phantom With Slide Closed Antenna Extended (WLAN Testing Setup)    |

**Photographs (Continued)**

| Photo Reference Number | Title  |
|------------------------|--|
| PHT/81001JD16/030      | Rear of EUT Facing Phantom With Slide Open Antenna Retracted (WLAN Testing Setup)                          |
| PHT/81001JD16/031      | Rear of EUT Facing Phantom With Slide Open Antenna Extended (WLAN Testing Setup)                           |
| PHT/81001JD16/032      | General Setup With PHF of Rear EUT Facing Phantom With Slide Closed Antenna Retracted (WLAN Testing Setup) |
| PHT/81001JD16/033      | Front of EUT Slide Closed With Antenna Retracted View  |
| PHT/81001JD16/034      | Front of EUT Slide Closed With Antenna Extended View   |
| PHT/81001JD16/035      | Front of EUT Slide Open With Antenna Retracted View  |
| PHT/81001JD16/036      | Front of EUT Slide Open With Antenna Extended View   |
| PHT/81001JD16/037      | Rear of EUT Slide Closed With Antenna Retracted View   |
| PHT/81001JD16/038      | Rear of EUT Slide Closed With Antenna Extended View  |
| PHT/81001JD16/039      | Rear of EUT Slide Open With Antenna Retracted View   |
| PHT/81001JD16/040      | Rear of EUT Slide Open With Antenna Extended View  |
| PHT/81001JD16/041      | Internal View of EUT   |
| PHT/81001JD16/042      | Battery View   |
| PHT/81001JD16/043      | PHF View   |
| PHT/81001JD16/044      | 900 MHz Head Fluid Level   |
| PHT/81001JD16/045      | 900 MHz Body Fluid Level   |
| PHT/81001JD16/046      | 1900 MHz Head Fluid Level  |
| PHT/81001JD16/047      | 1900 MHz Body Fluid Level  |
| PHT/81001JD16/048      | 2450 MHz Body Fluid Level  |

PHT/81001JD16/001: Test configuration for the measurement of Specific Absorption Rate (SAR)



PHT/81001JD16/002: Touch Left Slide Closed With Antenna Retracted



PHT/81001JD16/003: Touch Left Slide Closed With Antenna Extended



---

PHT/81001JD16/004: Touch Left Slide Open With Antenna Retracted





PHT/81001JD16/005: Touch Left Slide Open With Antenna Extended



---

PHT/81001JD16/006: Tilt Left Slide Closed With Antenna Retracted





PHT/81001JD16/007: Tilt Left Slide Closed With Antenna Extended



---

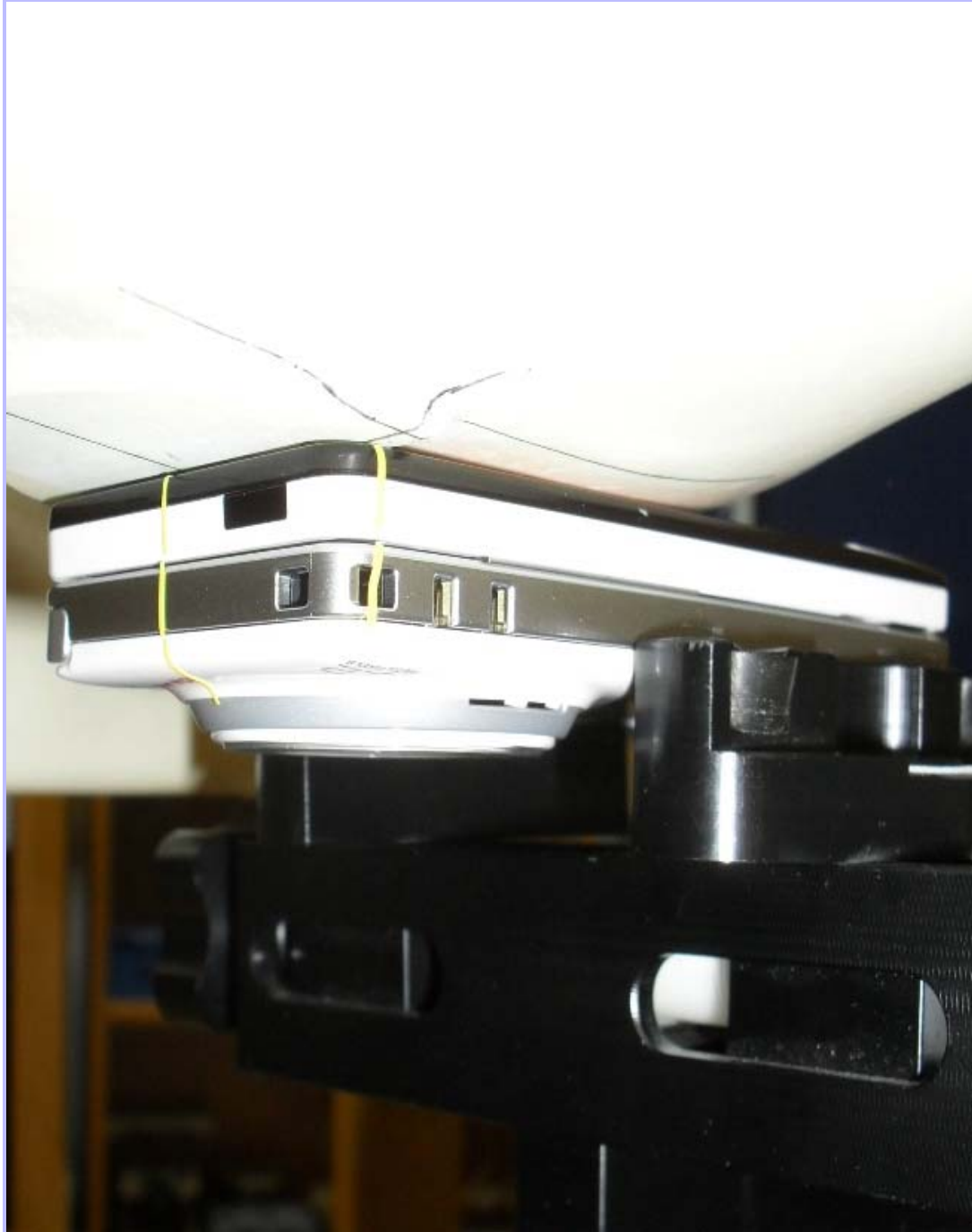
PHT/81001JD16/008: Tilt Left Slide Open With Antenna Retracted



PHT/81001JD16/009: Tilt Left Slide Open With Antenna Extended



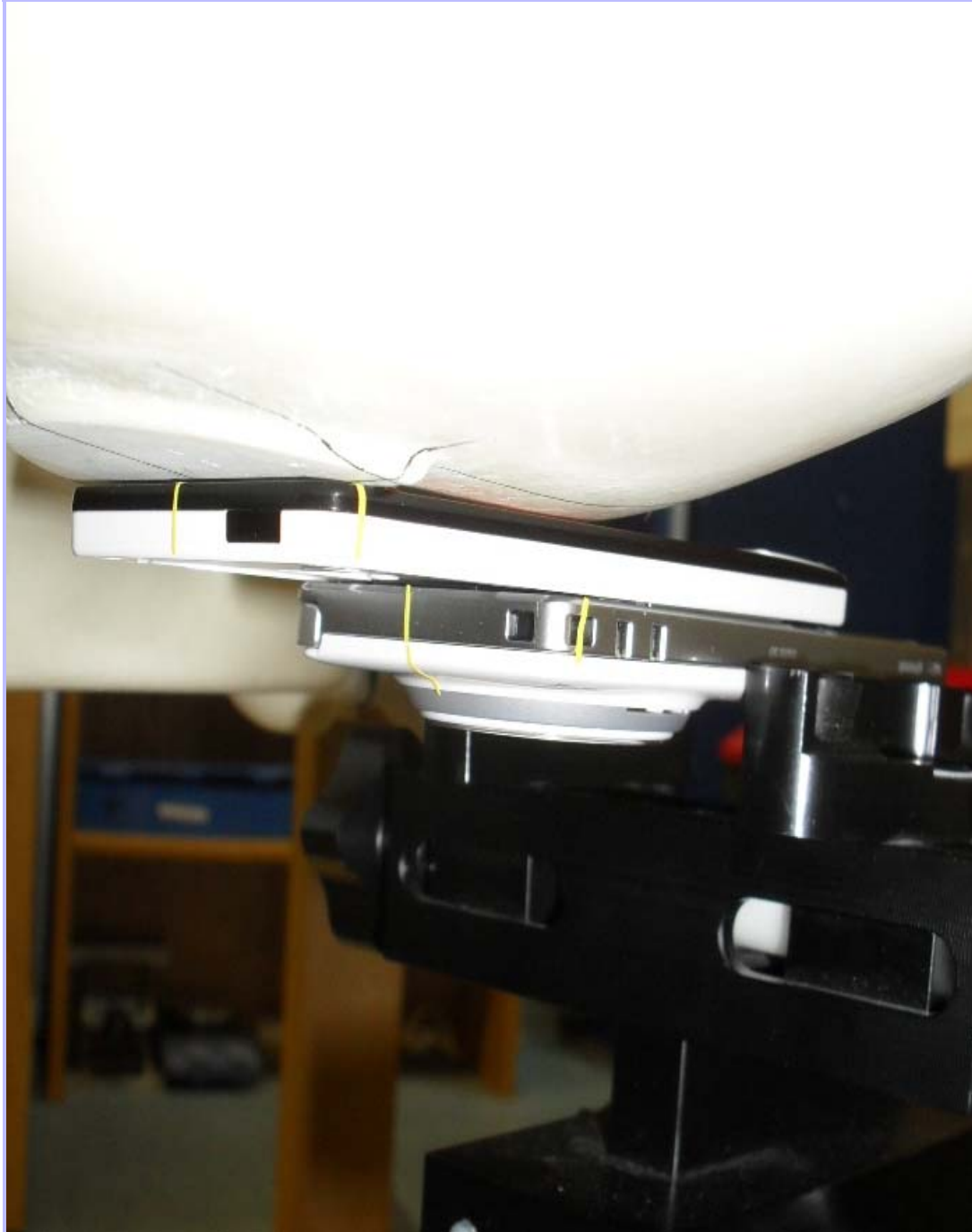
PHT/81001JD16/010: Touch Right Slide Closed With Antenna Retracted



PHT/81001JD16/011: Touch Right Slide Closed With Antenna Extended



PHT/81001JD16/012: Touch Right Slide Open With Antenna Retracted





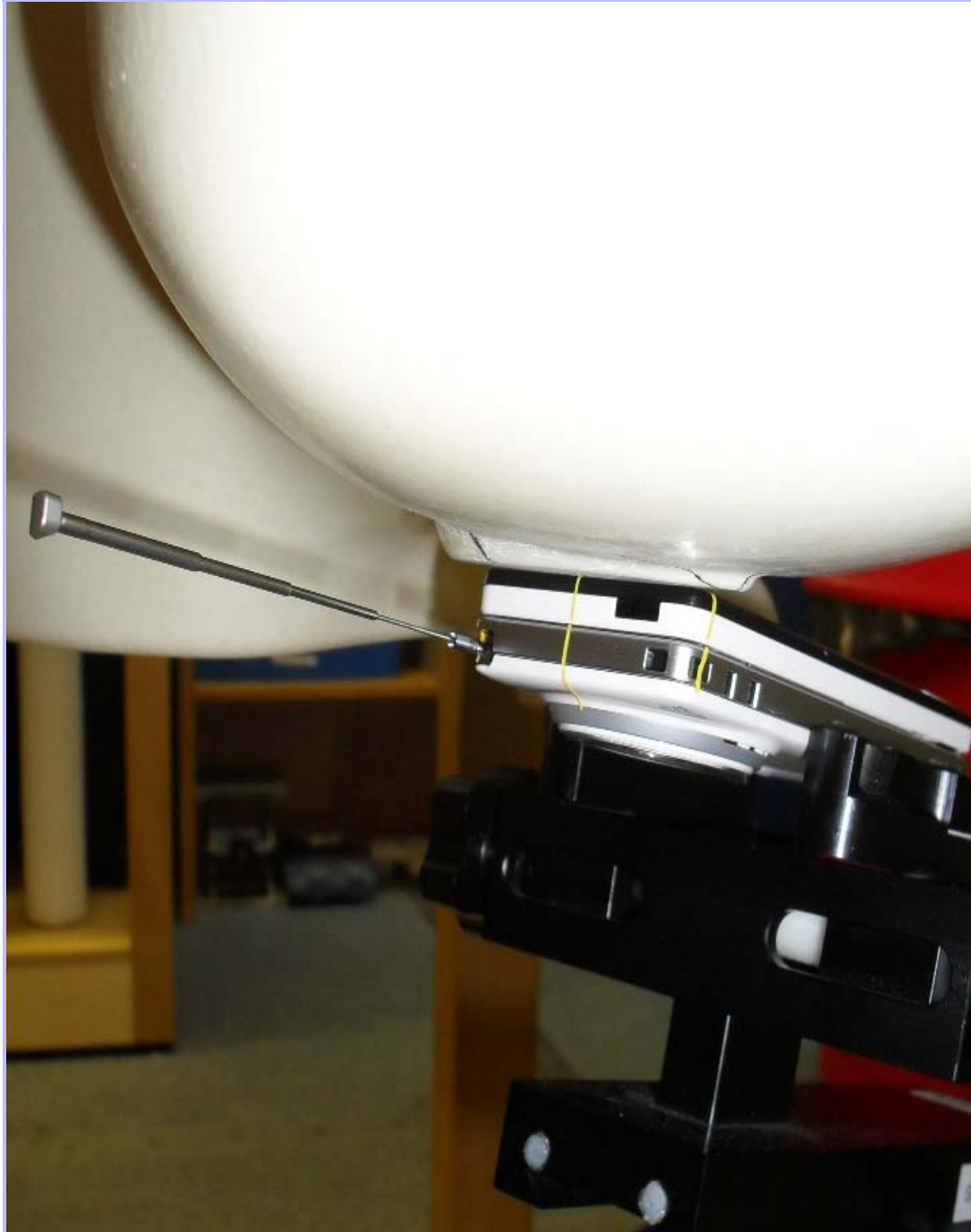
PHT/81001JD16/013: Touch Right Slide Open With Antenna Extended



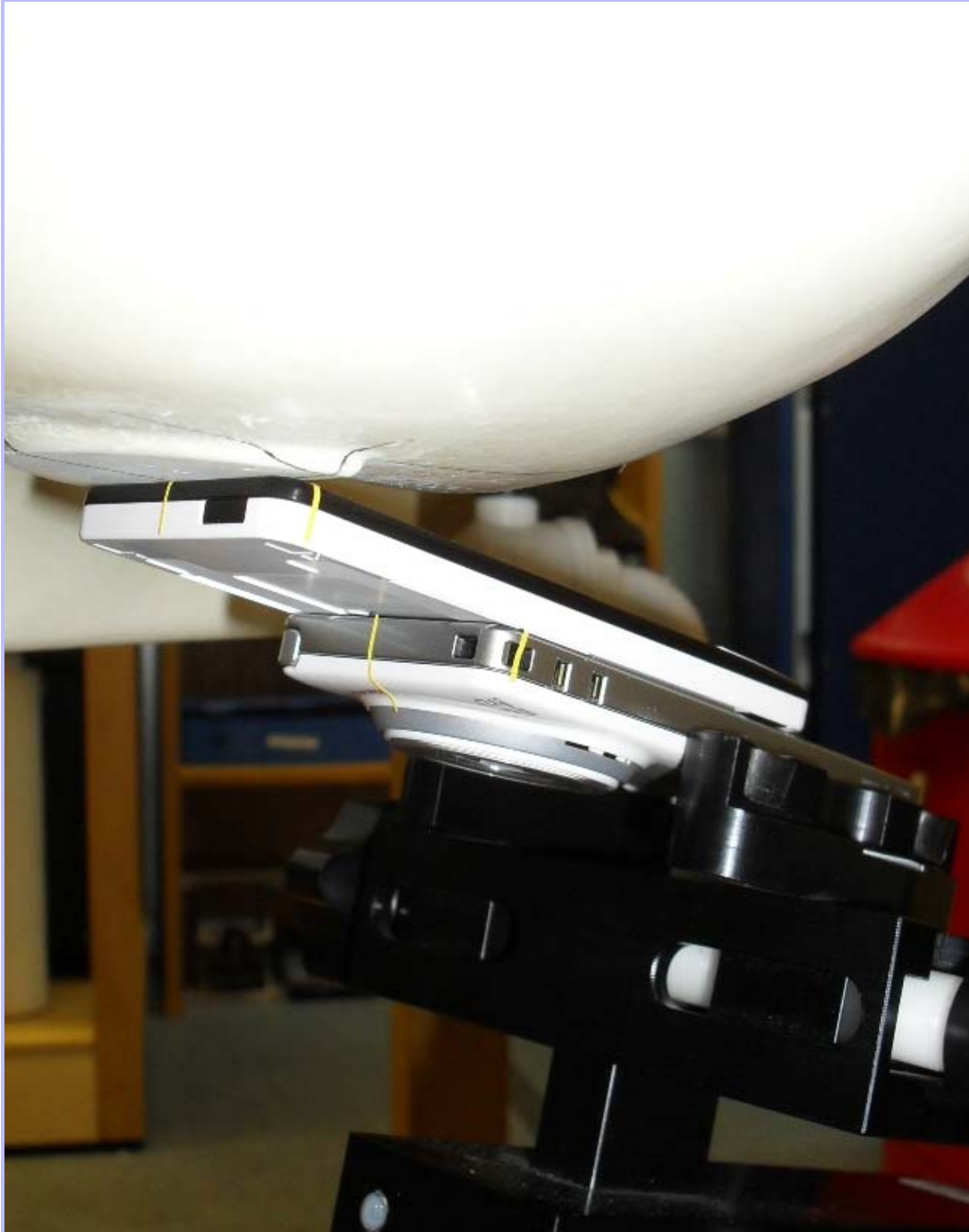
PHT/81001JD16/014: Tilt Right Slide Closed With Antenna Retracted



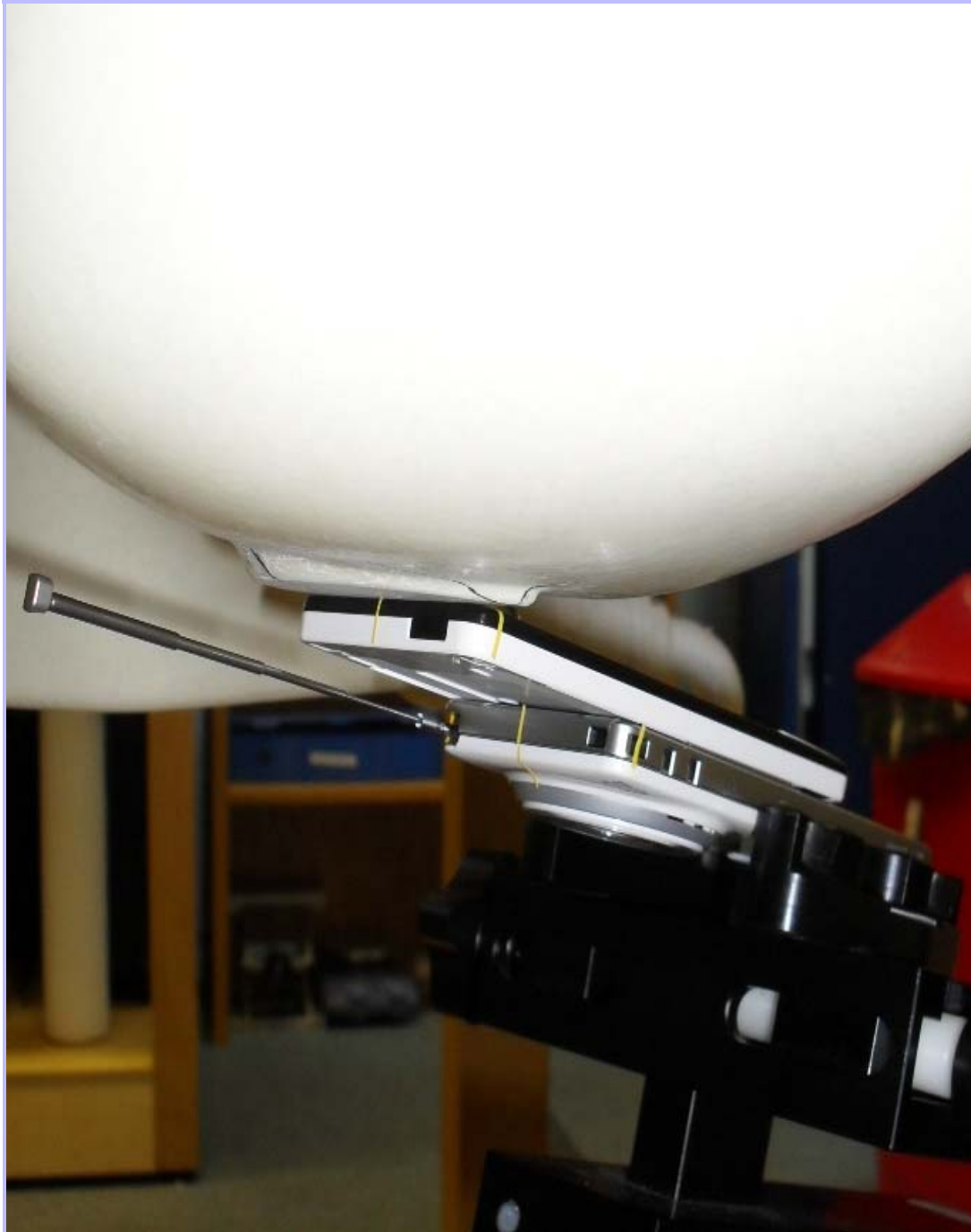
PHT/81001JD16/015: Tilt Right Slide Closed With Antenna Extended



PHT/81001JD16/016: Tilt Right Slide Open With Antenna Retracted



PHT/81001JD16/017: Tilt Right Slide Open With Antenna Extended



PHT/81001JD16/018: Front of EUT Facing Phantom With Slide Closed Antenna Retracted





PHT/81001JD16/019: Front of EUT Facing Phantom With Slide Closed Antenna Extended



PHT/81001JD16/020: Front of EUT Facing Phantom With Slide Open Antenna Retracted



PHT/81001JD16/021: Front of EUT Facing Phantom With Slide Open Antenna Extended



PHT/81001JD16/022: Rear of EUT Facing Phantom With Slide Closed Antenna Retracted



---

PHT/81001JD16/023: Rear of EUT Facing Phantom With Slide Closed Antenna Extended





---

PHT/81001JD16/024: Rear of EUT Facing Phantom With Slide Open Antenna Retracted





PHT/81001JD16/025: Rear of EUT Facing Phantom With Slide Open Antenna Extended

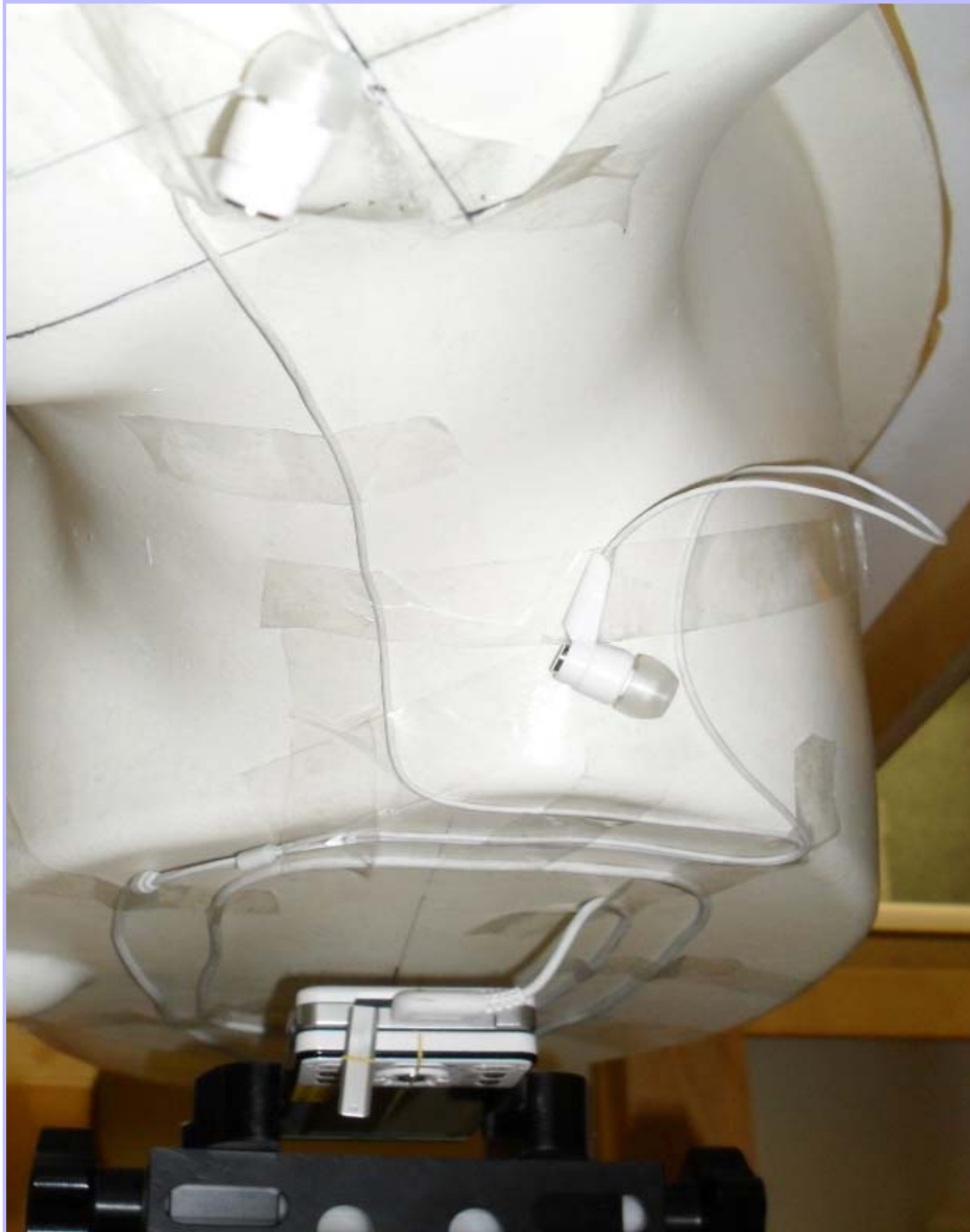


---

**PHT/81001JD16/026: General Setup With PHF of Front EUT Facing Phantom With Slide Open Antenna Extended**



**PHT/81001JD16/027: General Setup With PHF of Rear EUT Facing Phantom With Slide Closed  
Antenna Retracted**



---

**PHT/81001JD16/028: Rear of EUT Facing Phantom With Slide Closed Antenna Retracted  
(WLAN Testing Setup)**



PHT/81001JD16/029: Rear of EUT Facing Phantom With Slide Closed Antenna Extended  
(WLAN Testing Setup)





---

PHT/81001JD16/030: Rear of EUT Facing Phantom With Slide Open Antenna Retracted (WLAN Testing Setup)



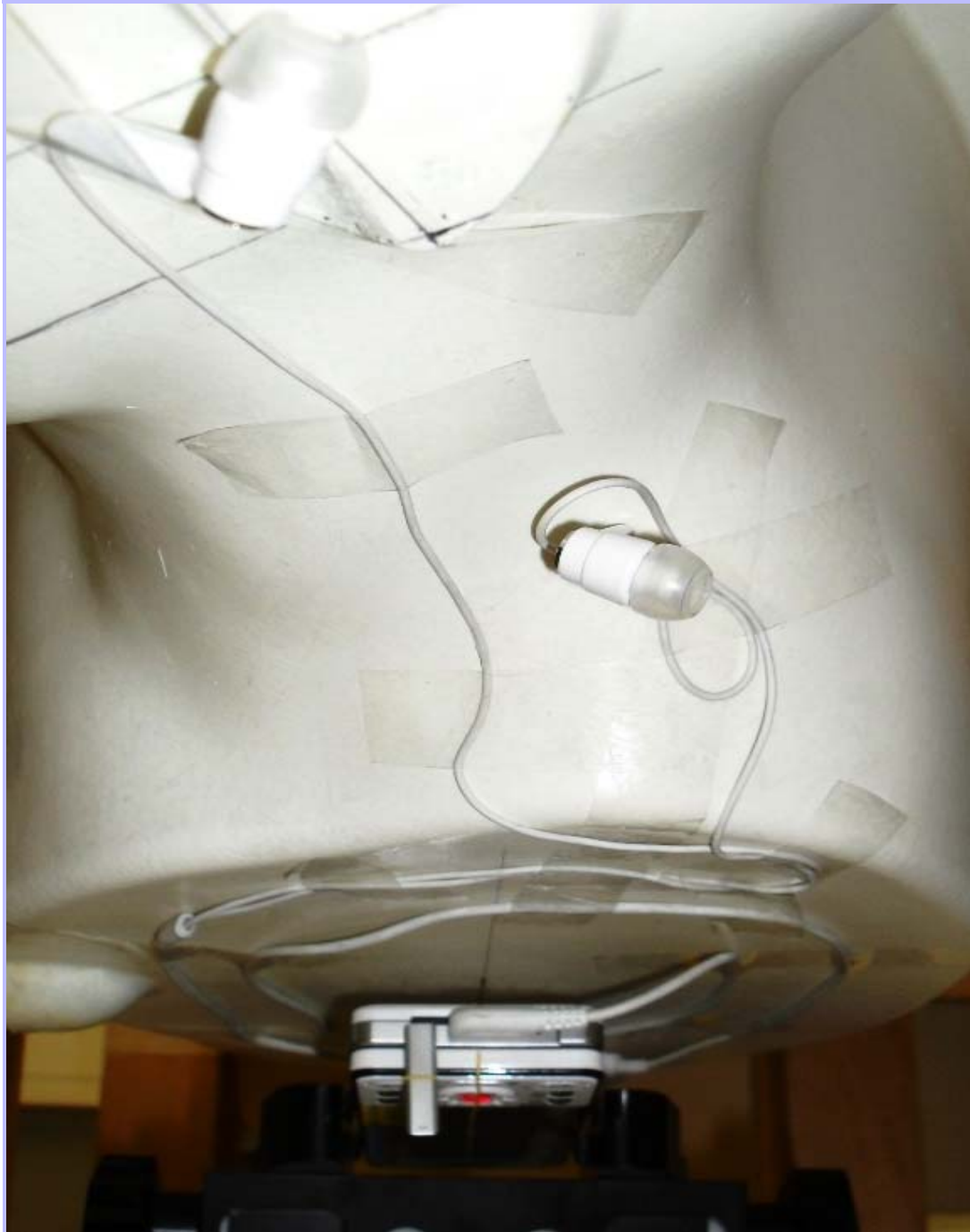


PHT/81001JD16/031: Rear of EUT Facing Phantom With Slide Open Antenna Extended (WLAN Testing Setup)



---

**PHT/81001JD16/032: General Setup With PHF of Rear EUT Facing Phantom With Slide Closed  
Antenna Retracted (WLAN Testing Setup)**



PHT/81001JD16/033: Front of EUT Slide Closed With Antenna Retracted View



PHT/81001JD16/034: Front of EUT Slide Closed With Antenna Extended View



PHT/81001JD16/035: Front of EUT Slide Open With Antenna Retracted View





PHT/81001JD16/036: Front of EUT Slide Open With Antenna Extended View





PHT/81001JD16/037: Rear of EUT Slide Closed With Antenna Retracted View



PHT/81001JD16/038: Rear of EUT Slide Closed With Antenna Extended View



PHT/81001JD16/039: Rear of EUT Slide Open With Antenna Retracted View



PHT/81001JD16/040: Rear of EUT Slide Open With Antenna Extended View





PHT/81001JD16/041: Internal View of EUT

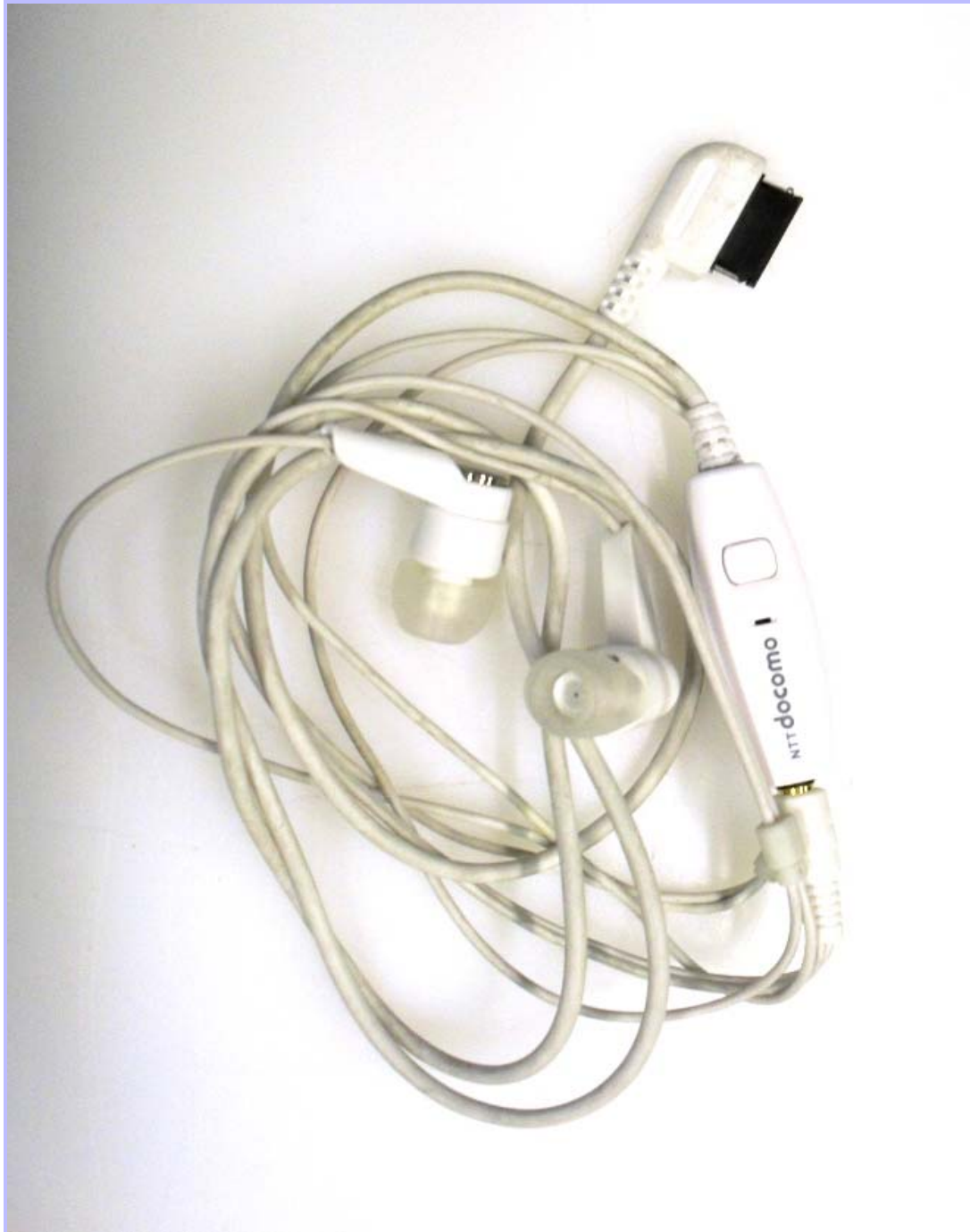


PHT/81001JD16/042: Battery View

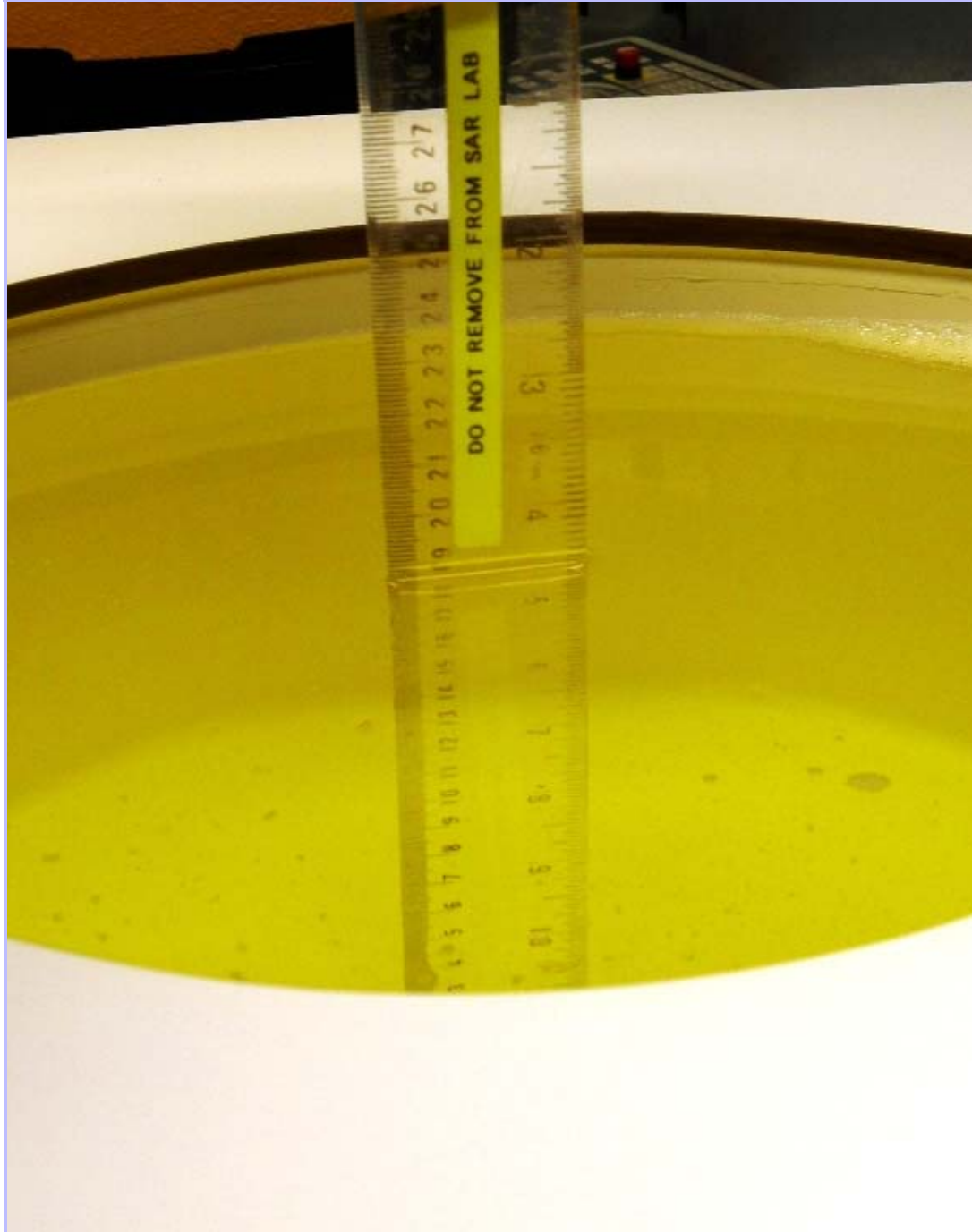




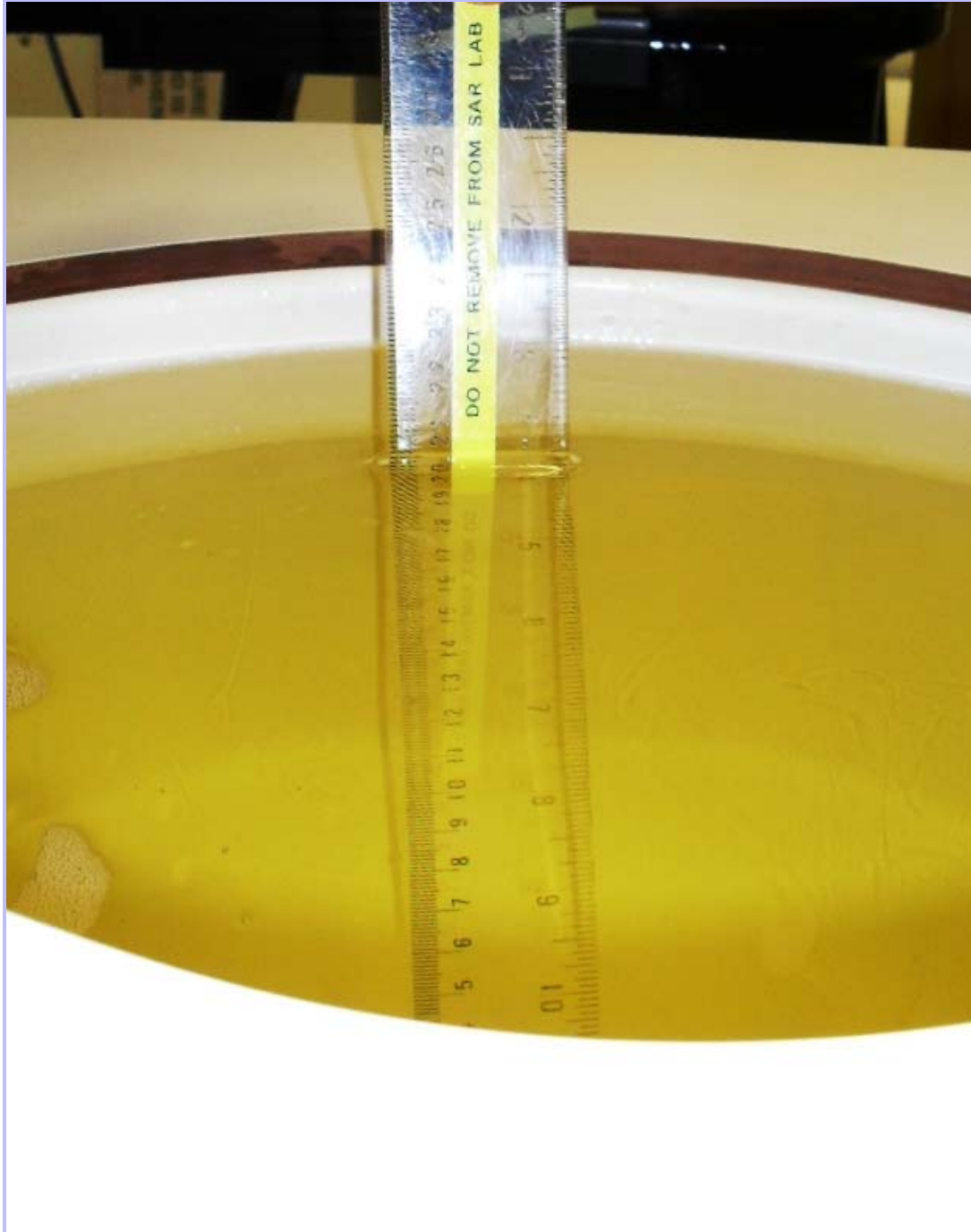
PHT/81001JD16/043: PHF View



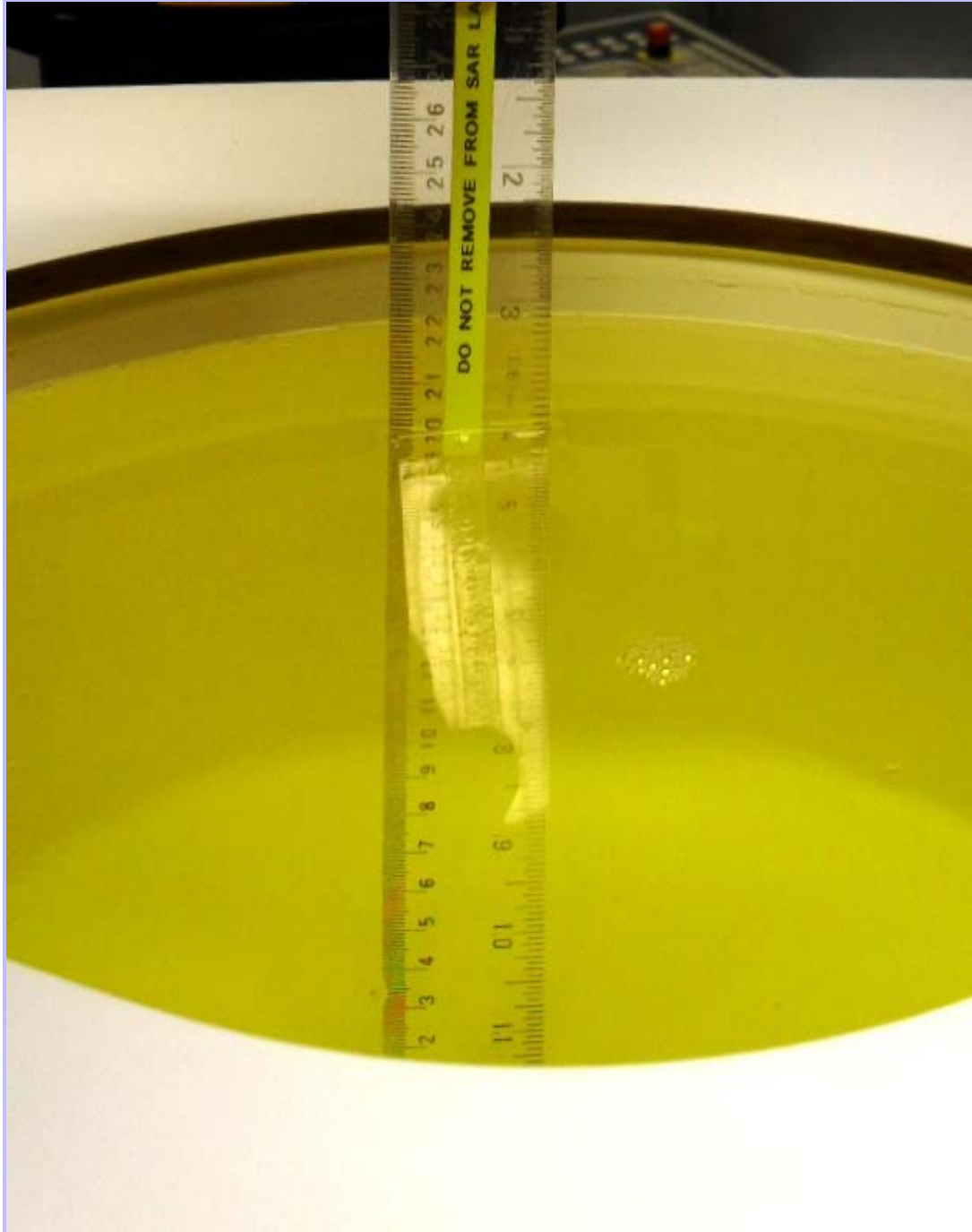
PHT/81001JD16/044: 900 MHz Head Fluid Level



PHT/81001JD16/045: 900 MHz Body Fluid Level



PHT/81001JD16/046: 1900 MHz Head Fluid Level



PHT/81001JD16/047: 1900 MHz Body Fluid Level





PHT/81001JD16/048: 2450 MHz Body Fluid Level

