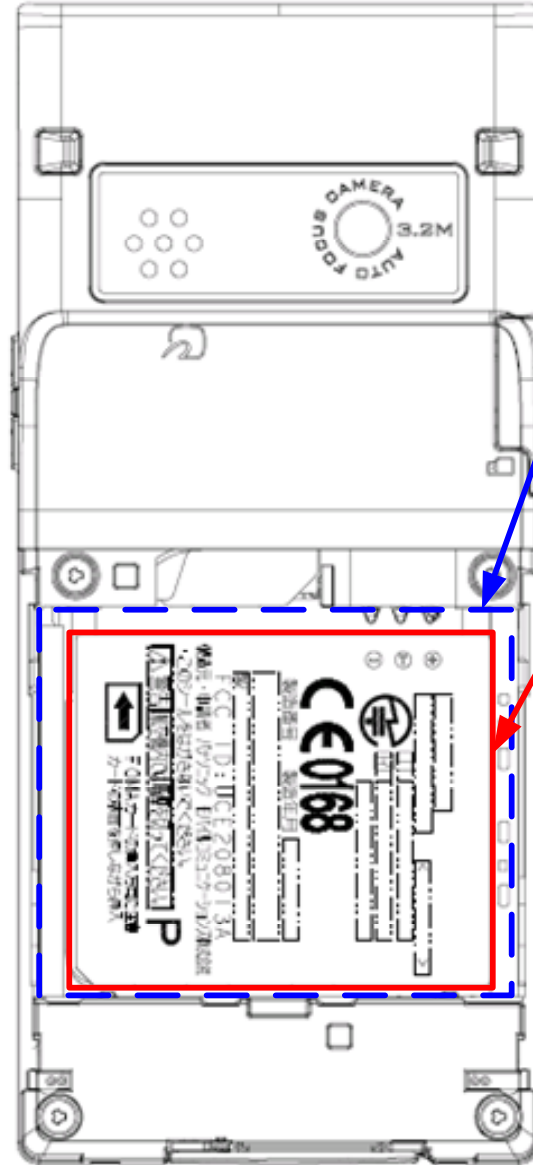


**FCC ID:UCE208013A**

-FCC ID label



## -Label location



## Battery Area :

Battery is placed in rear side of the phone

## Label Area :

This outline drawing shows the label in position within the battery compartment. The label is visible to the user at the point of sale prior to fitting the USIM (FOMA Card), battery pack and cover

- ① Operator Name
- ② Model Name
- ③ Color
- ④ ID for JATE
- ⑤ ID for TELEC
- ⑥ Production Year & Month
- ⑦ Bar Code of IMEI
- ⑧ IMEI(Production Serial Number)

(Rear View)