

Appendix 4. Photographs

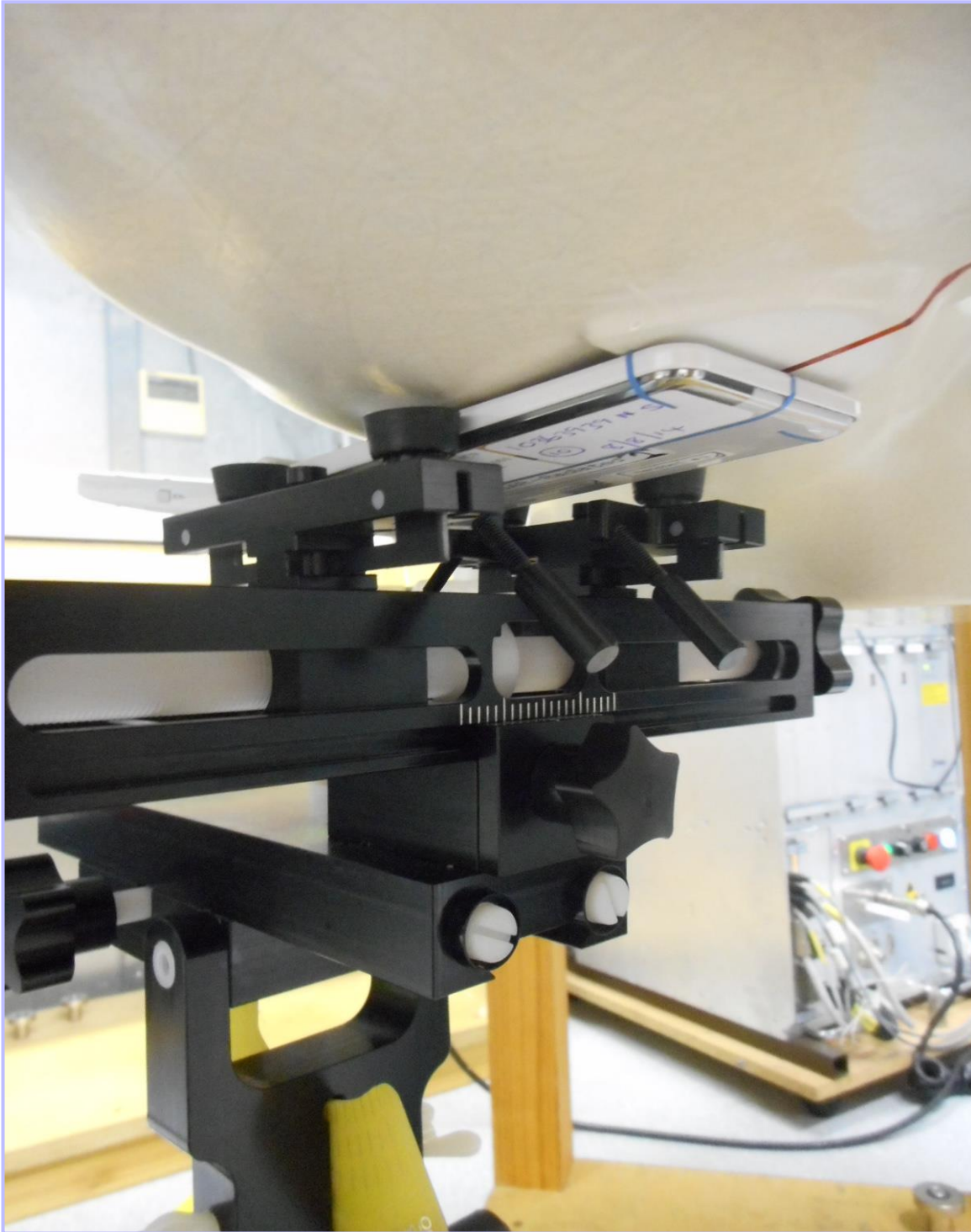
This appendix contains the following photographs:

Photo Reference Number	Title
PHT/10363939JD07A/001	Test configuration for the measurement of Specific Absorption Rate (SAR)
PHT/10363939JD07A/002	Touch Left
PHT/10363939JD07A/003	Tilt Left
PHT/10363939JD07A/004	Touch Right
PHT/10363939JD07A/005	Tilt Right
PHT/10363939JD07A/006	Front of EUT Facing Phantom Closed
PHT/10363939JD07A/007	Front of EUT Facing Phantom Open
PHT/10363939JD07A/008	Back of EUT Facing Phantom Closed
PHT/10363939JD07A/009	Back of EUT Facing Phantom Open
PHT/10363939JD07A/010	Front View of EUT Closed
PHT/10363939JD07A/011	Front View of EUT Open
PHT/10363939JD07A/012	Back View of EUT Closed
PHT/10363939JD07A/013	Back View of EUT Open
PHT/10363939JD07A/014	Front View of Conducted Sample
PHT/10363939JD07A/015	Internal View of EUT
PHT/10363939JD07A/016	Battery View
PHT/10363939JD07A/017	Dummy Battery View
PHT/10363939JD07A/018	850/900 Head Fluid Level
PHT/10363939JD07A/019	850/900 Body Fluid Level

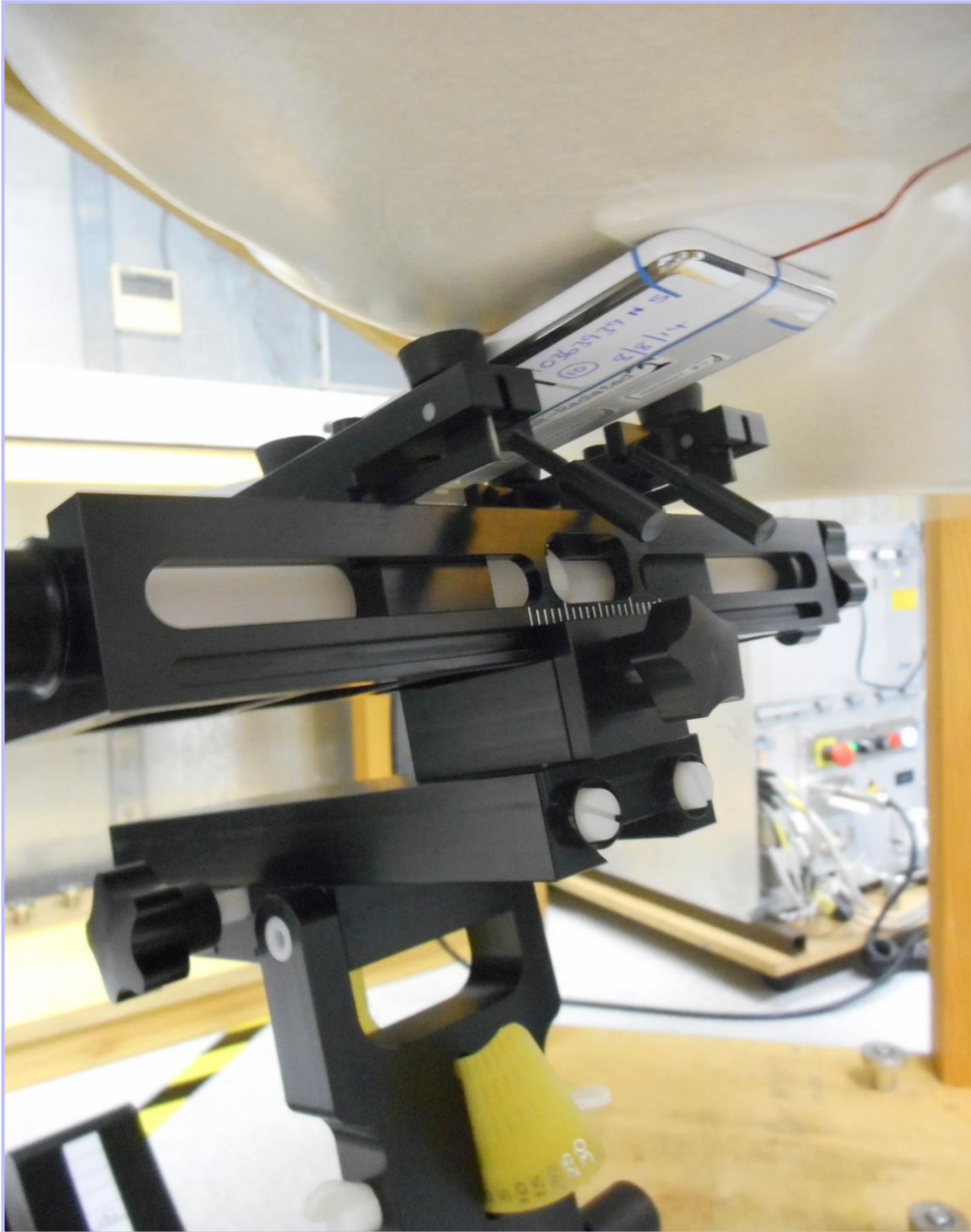
PHT/10363939JD07A/001: Test configuration for the measurement of Specific Absorption Rate (SAR)



PHT/10363939JD07A/002: Touch Left



PHT/10363939JD07A/003: Tilt Left



PHT/10363939JD07A/004: Touch Right



PHT/10363939JD07A/005: Tilt Right



PHT/10363939JD07A/006: Front of EUT Facing Phantom Closed



PHT/10363939JD07A/007: Front of EUT Facing Phantom Open



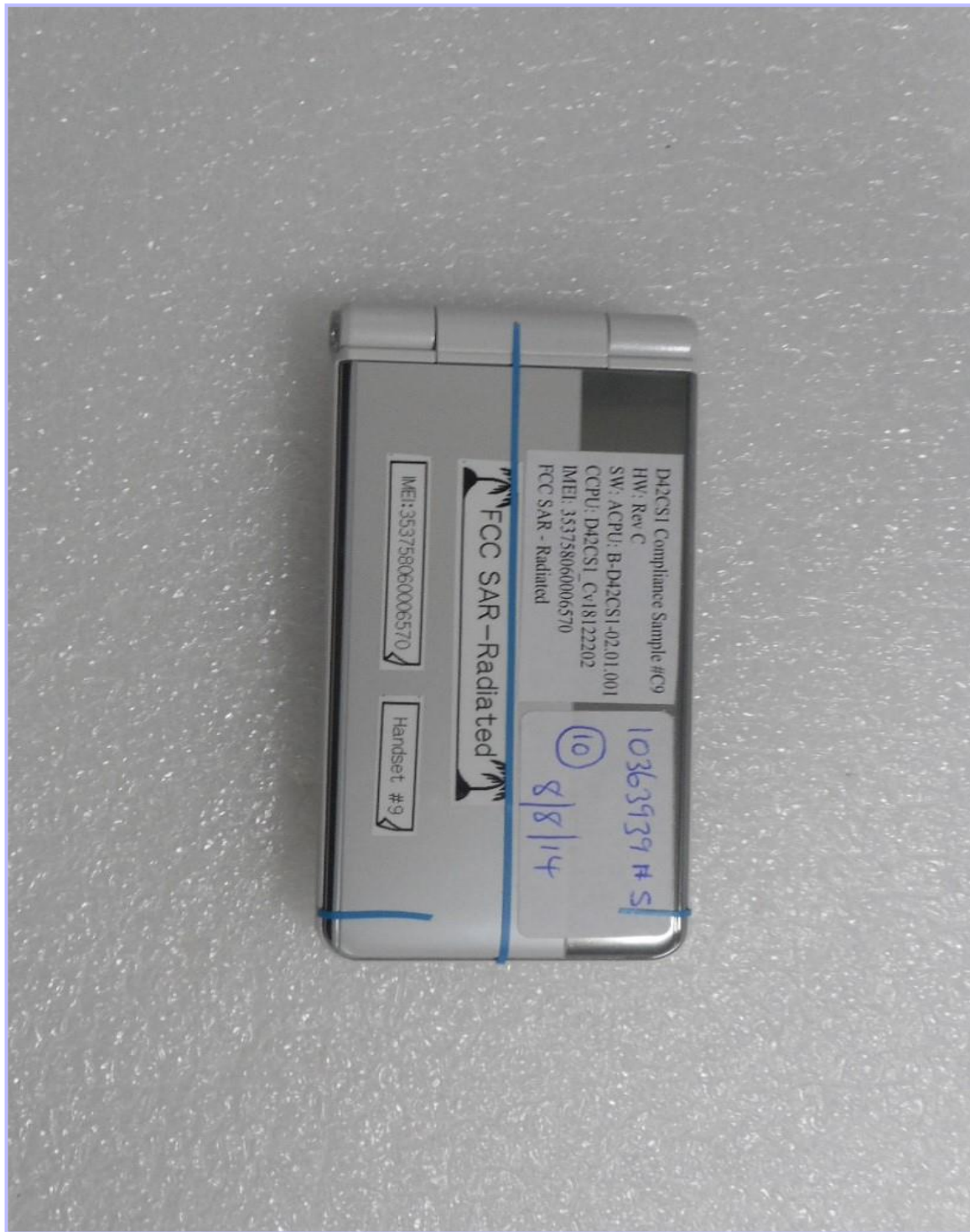
PHT/10363939JD07A/008: Back of EUT Facing Phantom Closed



PHT/10363939JD07A/009: Back of EUT Facing Phantom Open



PHT/10363939JD07A/010: Front View of EUT Closed



PHT/10363939JD07A/011: Front View of EUT Open



PHT/10363939JD07A/012: Back View of EUT Closed



PHT/10363939JD07A/013: Back View of EUT Open



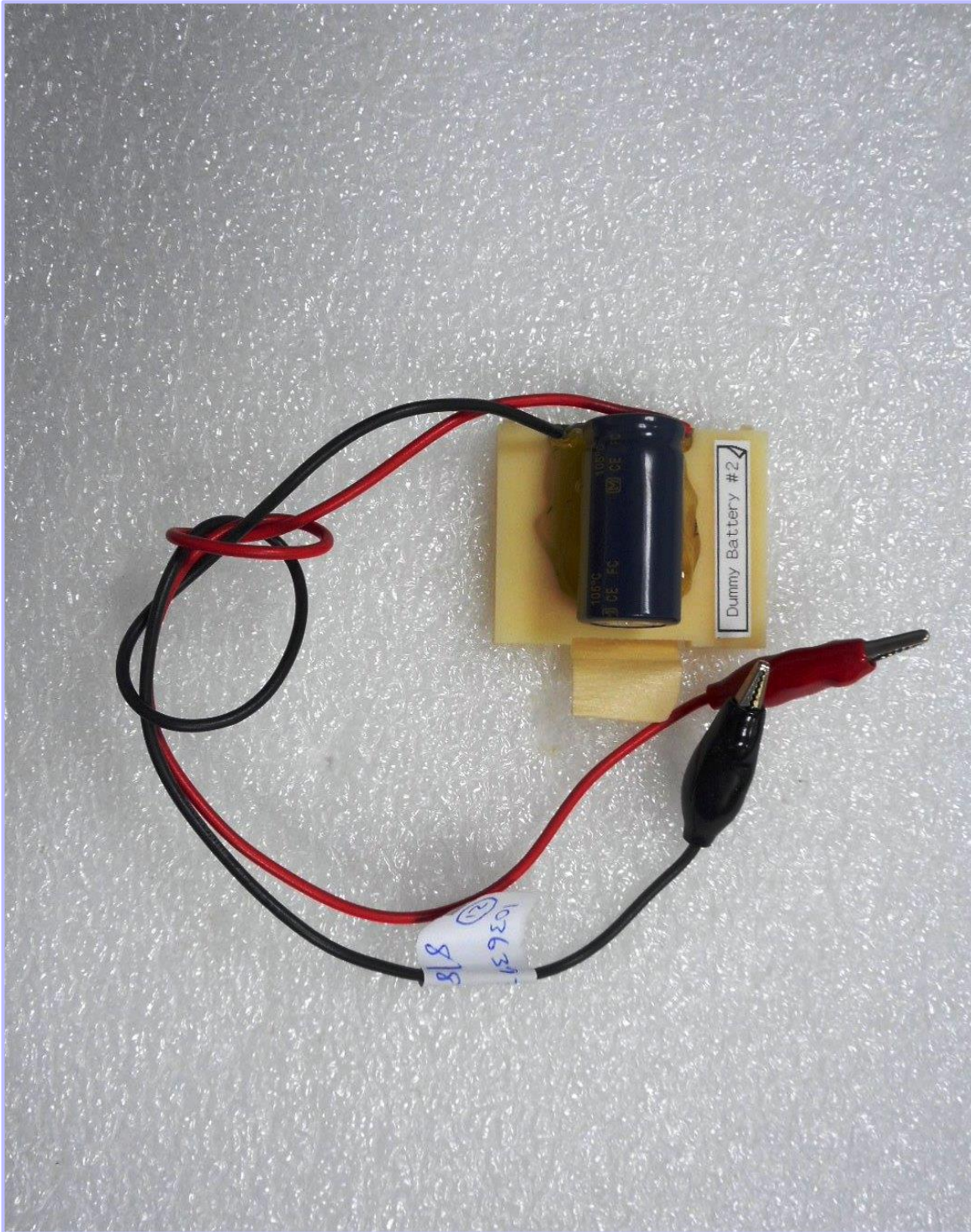
PHT/10363939JD07A/014: Front View of Conducted EUT



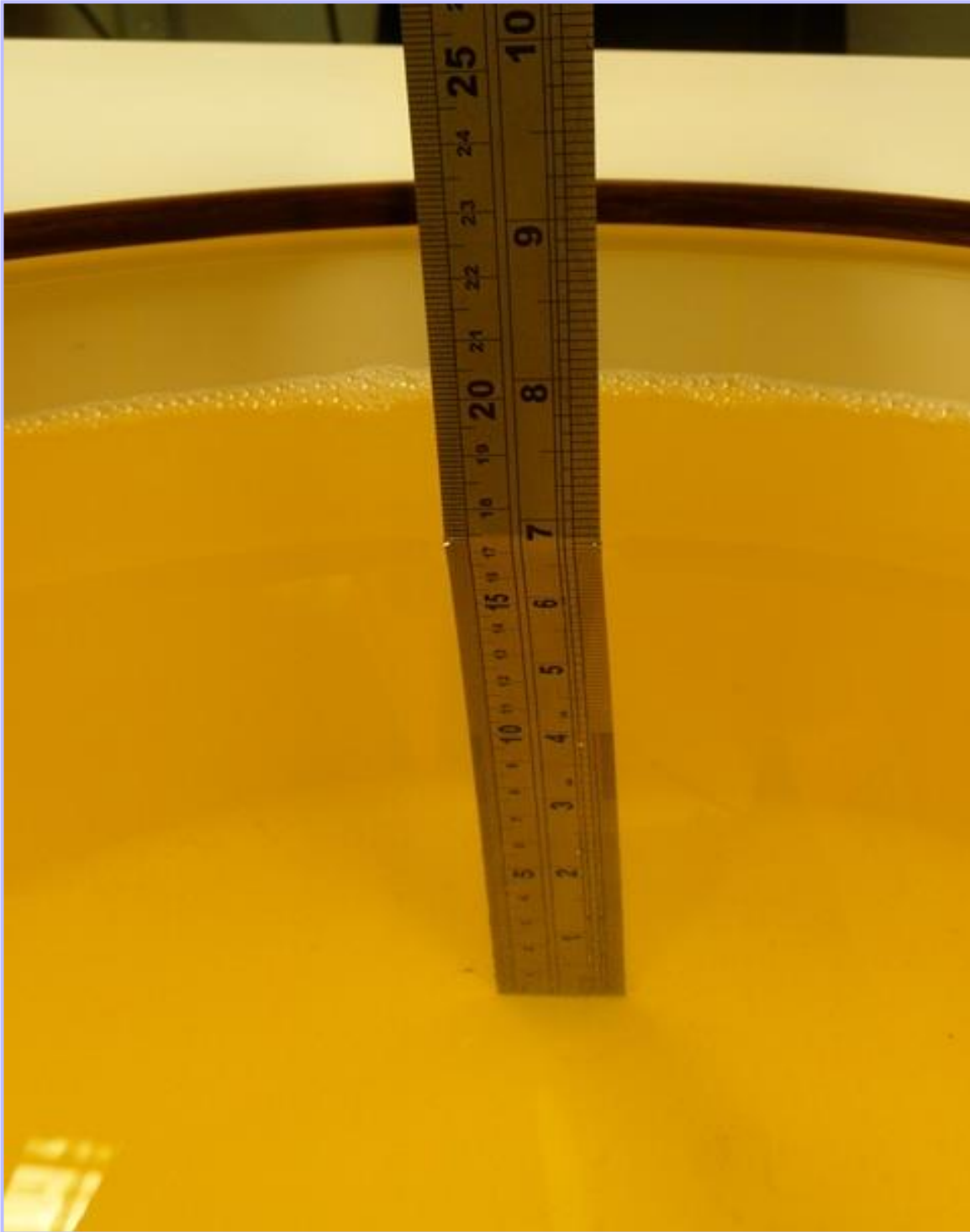
PHT/10363939JD07A/015: Internal View of EUT

PHT/10363939JD07A/016: Battery View

PHT/10363939JD07A/017: Dummy Battery View



PHT/10363939JD07A/018: 850/900 Head Fluid Level



PHT/10363939JD07A/019: 850/900 Body Fluid Level

