



**FCC 47 CFR part 2 (2.1093)
Published RF Exposure KDB Procedures
IEEE Std 1528-2013**

SAR EVALUATION REPORT

For
NTT docomo, P-01G

FCC ID: UCE114061A

**Test Report UL- SAR-RP10363939JD07 V3.0
ISSUE DATE: 10 September 2014**

Prepared for

**Panasonic Mobile Communications Development of Europe Ltd
Panasonic House
Willoughby Road
Bracknell
Berkshire
RG12 8FP
United Kingdom**

Prepared by

**UL VERIFICATION SERVICES LTD
PAVILION A, ASHWOOD PARK, ASHWOOD WAY
BASINGSTOKE, HAMPSHIRE, RG23 8BG, UK
TEL: +44 (0) 1256 312000
FAX: +44 (0) 1256 312001**



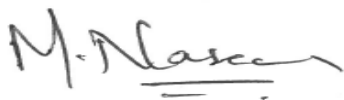
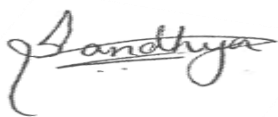
REVISION HISTORY

Rev.	Issue Date	Revisions	Revised By
--	27 Aug 2014	Initial Issue	--
1	02 Sept 2014	The following changes made in the report: <ol style="list-style-type: none">1. The EUT Name updated on front page to 'P-01G'2. In section 6.1, the Software version number updated.3. The typo in section 6.2 corrected from RFIF to RFID.4. Appendix 3, the SAR distribution scan, the EUT name amended to 'P-01G'	Naseer Mirza
2	10 Sept 2014	The following changes were made in the report:: <ol style="list-style-type: none">1. Bluetooth calculation in Section 6.12, 8.3.1, 8.3.2 corrected2. Simultaneous transmission table included as section 8.4	Sandhya Menon

TABLE OF CONTENTS

1. Attestation of Test Results.....	4
2. Test Specification, Methods and Procedures	5
3. Facilities and Accreditation.....	6
4. SAR Measurement System & Test Equipment.....	7
5. Measurement Uncertainty	8
6. Equipment Under Test (EUT)	9
7. System Check and Dielectric Parameters	17
8. Measurements, Examinations and Derived Results	18
9. SAR measurement variability.....	22
Appendix 1. Test Equipment Used	23
Appendix 2. Measurement Methods	26
Appendix 3. SAR Distribution Scans.....	28
Appendix 4. Photographs.....	43
Appendix 6. System Check and Dielectric Parameters	64
Appendix 7. Measurement Uncertainty Table	65
Appendix 8. 3G Test set-up.....	67
Appendix 9: Antenna Schematics.....	68

1. Attestation of Test Results

Applicant Name:	Panasonic Mobile Communications Development of Europe Ltd		
Application Purpose	<input checked="" type="checkbox"/> Original Grant		
DUT Description	Single Mode UTRA Mobile Phone with Bluetooth and RFID		
Test Device is	An identical prototype		
Device category	Portable		
Exposure Category	General Population/Uncontrolled Exposure (1g SAR limit: 1.6 W/kg)		
Date Tested	20 Aug 2014 to 21 Aug 2014		
The highest reported SAR values	RF Exposure Conditions	Licensed	DSS
	Head	0.754 W/kg	N/A
	Body-worn	1.182 W/kg	0.022 W/kg
	Simultaneous Transmission	1.204 W/kg	1.204 W/kg
Applicable Standards	FCC 47 CFR part 2 (2.1093) Published RF Exposure KDB Procedures IEEE Std 1528-2013		
Test Results	Pass		
<p>UL Verification Services Ltd. tested the above equipment in accordance with the requirements set forth in the above standards. All indications of Pass/Fail in this report are opinions expressed by UL Verification Services Ltd. based on interpretations and/or observations of test results. Measurement Uncertainties are in accordance with the above standard and are published for informational purposes only. The test results show that the equipment tested is capable of demonstrating compliance with the requirements as documented in this report.</p> <p>Note: The results documented in this report apply only to the tested sample(s), under the conditions and modes of operation as described herein. This document may not be altered or revised in any way unless done so by UL Verification Services Ltd. and all revisions are duly noted in the revisions section. Any alteration of this document not carried out by UL Verification Services Ltd. will constitute fraud and shall nullify the document. This report must not be used by the client to claim product certification, approval, or endorsement by UKAS. This report is written to support regulatory compliance of the applicable standards stated above.</p>			
Approved & Released By:		Prepared By:	
			
Naseer Mirza Project Lead UL Verification Services Ltd.		Sandhya Menon Laboratory Engineer UL Verification Services Ltd.	

2. Test Specification, Methods and Procedures

2.1. Test Specification

The tests documented in this report were performed in accordance with FCC 47 CFR part 2, IEEE Std 1528-2013, and has been tested in accordance with the reference documents in section 2.2 of this report.

2.2. Methods and Procedures Reference Documentation

The methods and procedures used were as detailed in:

IEEE 1528: 2013

IEEE Recommended Practice for Determining the Peak Spatial-Average Specific Absorption Rate (SAR) in the Human Head from Wireless Communications Devices: Measurement Techniques

Thomas Schmid, Oliver Egger and Neils Kuster, "Automated E-field scanning system for dosimetric assessments", IEEE Transaction on microwave theory and techniques, Vol. 44, pp. 105-113, January 1996.

Neils Kuster, Ralph Kastle and Thomas Schmid, "Dosimetric evaluation of mobile communications equipment with known precision", IEICE Transactions of communications, Vol. E80-B, No.5, pp. 645-652, May 1997.

FCC KDB Publication:

KDB 447498 D01 General RF Exposure Guidance v05r02

KDB 648474 D04 SAR Handsets SAR v01r02

KDB 941225 D01 SAR test for 3G devices v02

KDB 865664 D01 SAR measurement 100 MHz to 6 GHz v01r03

KDB 865664 D02 RF Exposure Reporting v01r01

2.3. Definition of Measurement Equipment

The measurement equipment used complied with the requirements of the standards referenced in the methods & procedures section above. Appendix 1 contains a list of the test equipment used.

3. Facilities and Accreditation

The test sites and measurement facilities used to collect data are located at

Pavilion A, Ashwood Park, Ashwood Way, Basingstoke, Hampshire, RG23 8BG UK	Facility Type
SAR Lab 56	Controlled Environment Chamber
SAR Lab 57	Controlled Environment Chamber

UL Verification Services Ltd, is accredited by UKAS (United Kingdom Accreditation Service), Laboratory UKAS Code 0644.

5. Measurement Uncertainty

No measurement or test can ever be perfect and the imperfections give rise to error of measurement in the results. Consequently, the result of a measurement is only an approximation to the value of the measurand (the specific quantity subject to measurement) and is only complete when accompanied by a statement of the uncertainty of the approximation.

The expression of uncertainty of a measurement result allows realistic comparison of results with reference values and limits given in specifications and standards.

The uncertainty of the result may need to be taken into account when interpreting the measurement results.

The reported expanded uncertainties below are based on a standard uncertainty multiplied by an appropriate coverage factor, such that a confidence level of approximately 95% is maintained. For the purposes of this document “approximately” is interpreted as meaning “effectively” or “for most practical purposes”.

Test Name	Confidence Level	Calculated Uncertainty
UMTS FDD 5 Head Configuration 1g	95%	±18.77%
UMTS FDD 5 Body Configurations 1g	95%	±18.36%

The methods used to calculate the above uncertainties are in line with those recommended within the various measurement specifications. Where measurement specifications do not include guidelines for the evaluation of measurement uncertainty, the published guidance of the appropriate accreditation body is followed.

See [Appendix 7](#) for all uncertainty tables.

6. Equipment Under Test (EUT)

6.1. Identification of Equipment Under Test (EUT)

IMEI Number:	<p>The following sample(s) with IMEI were used for the SAR testing: IMEI: 353758060006570 – UMTS FDD 5</p> <p>The following sample(s) with IMEI were used for the conducted power measurement: IMEI: 353758060006646 – UMTS FDD 5</p>
Hardware Version Number:	Rev C
Software Version Number:	ACPU: B-D42CS1-02.01.001 CCPU: D42CS1_Cv18122202
Country of Origin:	Japan
Date of Receipt:	20 August 2014

6.2. Further Description of EUT

The EUT supports UMTS FDD band 5, Bluetooth and RFID. It also supports HSPA with HSDPA Rel 6 (Category 10), HSUPA Rel 6 (Category 6), Bluetooth (V2.0+ EDR) and RFID 13.56 MHz.

6.3. Accessories

The following accessories were supplied with the EUT during testing:

Description:	Personal Handsfree Kit (Stereo Earphone Set)	Battery	Dummy Battery
Brand Name:	NTT docomo	NTT	None Stated
Model Name or Number:	01	P31	None Stated
Serial Number:	None Stated	None Stated	None Stated
Country of Manufacture:	None Stated	China	None Stated

Note(s):

The Dummy Battery was only used to perform conducted power measurements.

6.4. Modifications Incorporated in the EUT

There was no modification incorporated in the EUT during the course of testing the device

6.5. Support Equipment

The following support equipment was used to exercise the EUT during testing:

Description:	Brand Name:	Model Name or Number:	Serial Number:	Cable Length and Type:	Connected to Port
Communication Test Set	Agilent	8960 Series 10 (E5515C)	GB46200666	~4.0m Utiflex Cable	RF (Input / Output) Air Link

6.6.Additional Information Related to Testing

Equipment Category	3G UMTS Band	FDD 5	RMC12.2Kbps RMC + HSDPA Cat 10 RMC + HSUPA Cat 6	
Type of Unit	Portable Transceiver			
Intended Operating Environment:	Within UMTS and Bluetooth Coverage			
Transmitter Maximum Output Power Characteristics:	UMTS FDD 5	Communication Test Set configured to allow to EUT to transmit at a maximum power as per KDB 941225 D01.		
Transmitter Frequency Range:	UMTS FDD 5	(826 to 847) MHz		
Transmitter Frequency Allocation of EUT When Under Test:	Bands	Channel Number	Channel Description	Frequency (MHz)
	UMTS FDD 5	4132	Low	826.4
		4183	Middle	836.6
		4233	High	846.6
Modulation(s):	QPSK(UMTS / HSDPA/HSPA):			0Hz
Modulation Scheme (Crest Factor):	QPSK(UMTS / HSDPA/HSPA):			1
Antenna Type:	Internal integral			
Antenna Length:	As specified in Appendix 9			
Number of Antenna Positions:	WWAN ~ UMTS			1 fixed
	Bluetooth			1 fixed
Power Supply Requirement:	3.7 V			
Battery Type(s):	Embedded Li-ion			

6.6.1. Operating Modes

The EUT was tested in the following operating mode(s) unless otherwise stated:

- UMTS FDD 5 - RMC 12.2kbps with Test loop mode 1 and TPC bits configured to all "1's", to allow the EUT to transmit at a maximum as per KDB 941225 D01.
- UMTS FDD 5 - RMC 12.2kbps + HSUPA with Test loop mode 1 and TPC bits configured to all "1's", Sub-test 5, AG Index set to 21 and E-TFCI set to 81 with Communication Test Set configured to allow to EUT to transmit at a maximum power as per KDB 941225 D01.
- UMTS FDD 5 - RMC 12.2kbps + HSDPA with Test loop mode 1 and TPC bits configured to all "1's", Sub-test 1 with Communication Test Set configured to allow to EUT to transmit at a maximum power as per KDB 941225 D01.

6.7. Nominal and Maximum Output power:

Band	CS		HS	
	Target (dBm)	Tolerance \pm (dB)	Target (dBm)	Tolerance \pm (dB)
UMTS FDD 5	23.0	-2.0~+1.5	23.0	-2.0~+1.5

Band	V2.0+EDR	
Bluetooth	Target (dBm)	Tolerance \pm (dB)
	0.0	-4.0~+2.0

Note:

1. As per KDB865664 D02 SAR Reporting v01, 2.1.4(a), the nominal and maximum average source based rated power, declared and supplied by manufacturer are shown in the above tables.
2. These are specified maximum allowed average power for all the wireless modes and frequencies bands supported.

6.8. Simultaneous Transmission Conditions

Simultaneous transmission SAR test exclusion is determined for each operating configuration and exposure condition according to the reported standalone SAR of each applicable simultaneous transmitting antenna. In this report the simultaneous transmission combination of WWAN and *Bluetooth* has been documented.

6.9. RF Exposure Conditions (Test Configurations)

Refer to [Appendix 9](#) "Antenna Locations and Separation Distances" for the specific details of the antenna-to-antenna and antenna-to-edge(s) distances.

6.10. Configuration and Peripherals

The EUT was tested in the following configuration(s) unless otherwise stated:

- Standalone fully charged battery powered.
- Head and Body-worn configurations were evaluated.

Head Configuration

- a) The EUT was placed in a normal operating position with the centre of the ear-piece aligned with the ear canal on the phantom.
- b) With the ear-piece touching the phantom the centre line of the EUT was aligned with an imaginary plane (X and Y axis) consisting of three lines connecting both ears and the mouth.
- c) For the cheek position the EUT was gradually moved towards the cheek until any point of the mouth-piece or keypad touched the cheek.
- d) For the tilted position the EUT was positioned as for the cheek position, and then the horizontal angle was increased by fifteen degrees (the phone keypad was moved away from the cheek by fifteen degrees).
- e) SAR measurements were evaluated at maximum power and the unit was operated for an appropriate period prior to the evaluation in order to minimise the drift.
- f) The device was keyed to operate continuously in the transmit mode for the duration of the test.
- g) The location of the maximum spatial SAR distribution (peak) was determined relative to the EUT and its antenna.
- h) The EUT was transmitting at full power throughout the duration of the test powered by a fully charged battery.

Body Configuration

- a) The EUT was placed in a normal operating position where the centre of EUT was aligned with the centre reference point on the flat section of the 'SAM' or 'Eli' phantom.
- b) With the EUT touching the phantom at an imaginary centre line. The EUT was aligned with a marked plane (X and Y axis) consisting of two lines.
- c) For the touch-safe position the EUT was gradually moved towards the flat section of the 'SAM' phantom until any point of the EUT touched the phantom.
- d) For position(s) greater than 0mm separation the EUT was positioned as per the touch-safe position, and then the vertical height was decreased/adjusted as required.
- e) SAR measurements were evaluated at maximum power and the unit was operated for an appropriate period prior to the evaluation in order to minimise the drift.
- f) The device was keyed to operate continuously in the transmit mode for the duration of the test.
- g) The location of the maximum spatial SAR distribution (peak) was determined relative to the EUT and its antenna.
- h) The EUT was transmitting at full power throughout the duration of the test powered by a fully charged battery.

6.11. Configuration Consideration

Technology Antenna	Configuration	Antenna-to-User Separation	Position	Antenna-to-Edge Separation	Evaluation Considered
WWAN	Head	0mm	Touch Left	<25mm	Yes
			Tilt Left	<25mm	Yes
			Touch Right	<25mm	Yes
			Tilt Right	<25mm	Yes
	Body	15mm	Front	<25mm	Yes
			Back	<25mm	Yes

Note:

1. The Antenna to Edge distances is included in the Appendix 9 of the report.
2. Test exemption is as per FCC KDB publication 447498 D01v05 for mobile handsets.
3. Bluetooth standalone SAR is excluded as the output power meets the exclusion threshold:

- 1) The 1-g and 10-g SAR test exclusion thresholds for 100 MHz to 6 GHz at *test separation distances* ≤ 50 mm are determined by:

$$[(\text{max. power of channel, including tune-up tolerance, mW})/(\text{min. test separation distance, mm})] \cdot [\sqrt{f_{\text{(GHz)}}}] \leq 3.0 \text{ for 1-g SAR and } \leq 7.5 \text{ for 10-g extremity SAR,}^{16} \text{ where}$$

- $f_{\text{(GHz)}}$ is the RF channel transmit frequency in GHz
- Power and distance are rounded to the nearest mW and mm before calculation¹⁷
- The result is rounded to one decimal place for comparison

¹⁶ Taken from FCC KDB publication 447498 D01v05r02

6.12. SAR Test Exclusion Consideration

Frequency Band	Configuration(s)	
	Head	Body-worn
UMTS FDD 5	No	No
<i>Bluetooth</i>	N/A	Yes

Note:

- As per KDB 447498 D01 General RF Exposure Guidance v05r02, The Frequency Bands with Rated Power including Upper tolerance, which qualify for **Standalone SAR Test Exclusion**, are as per the above table.

The 1-g and 10-g SAR test exclusion thresholds for 100 MHz to 6 GHz at test separation distances ≤ 50 mm are determined by:

$$[(\text{max. power of channel, including tune-up tolerance, mW})/(\text{min. test separation distance, mm})] * [\sqrt{f_{(\text{GHz})}}] \leq 3.0 \text{ for 1-g SAR and } \leq 7.5 \text{ for 10-g extremity SAR, where}$$

- $f_{(\text{GHz})}$ is the RF channel transmit frequency in GHz
- Power and distance are rounded to the nearest *mW* and *mm* before calculation
- The result is rounded to one decimal place for comparison

The test exclusions are applicable only when the minimum test separation distance is ≤ 50 mm and for transmission frequencies between 100 MHz and 6 GHz. When the minimum test separation distance is < 5 mm, a distance of 5 mm is applied to determine SAR test exclusion.

Applying the above formula for *Bluetooth* Body-worn we get:

$$\text{➤ For 2450MHz, } [(1.585)/15] * [\sqrt{2.45}] = 0.164 \leq 3.0$$

Hence, no testing was performed on *Bluetooth* mode.

- The details for the **Maximum Rated Power** and tolerance(s) can be found in section 6.6.

6.13. RF Output Average Power Measurement: WCDMA**6.13.1. RMC / HSDPA / HSUPA**

Modes		HSDPA				HSUPA				WCDMA	
Sets		1	2	3	4	1	2	3	4	5	Voice / RMC 12.2kbps
Band	Channel	Power [dBm]	Power [dBm]	Power [dBm]	Power [dBm]	Power [dBm]	Power [dBm]	Power [dBm]	Power [dBm]	Power [dBm]	Power [dBm]
Band 5 (850 MHz)	UL: 4132 DL: 4357	22.9	22.4	22.4	22.4	22.9	20.7	21.8	20.3	22.9	23.0
	UL: 4183 DL: 4408	23.3	22.8	22.7	22.7	23.3	21.1	22.3	21.0	23.3	23.3
	UL: 4233 DL: 4458	22.9	22.5	22.5	22.5	22.9	20.8	22.0	20.6	22.9	23.0
βc		2	12	15	15	11	6	15	2	15	
βd		15	15	8	4	15	15	9	15	15	
ΔACK, ΔNACK, ΔCQI		8	8	8	8	8	8	8	8	8	
AGV		-	-	-	-	20	12	15	17	21	

7. System Check and Dielectric Parameters

See [Appendix 5](#) and [Appendix 6](#) for tables and measurements.

8. Measurements, Examinations and Derived Results

8.1. General Comments

This section contains test results only.

Measurement uncertainties are evaluated in accordance with current best practice. Our reported expanded uncertainties are based on standard uncertainties, which are multiplied by an appropriate coverage factor to provide a statistical confidence level of approximately 95%. Please refer to section 8 for details of measurement uncertainties.

8.2. Specific Absorption Rate - Test Results**For All SAR measurement in this report the 1g-SAR limit tested to is 1.6 W/Kg****8.2.1. UMTS FDD 5 - Head Configuration 1g****Max Measured SAR = 0.572 (W/kg)****Max Reported SAR = 0.754 (W/kg)**

					Power (dBm)		1g : SAR Results (W/kg)		Note(s)	Scan No.
Mode or Modulation	Dist (mm)	Test Position	Channel No.	Freq (MHz)	Tune-up limit	Meas.	Meas.	Reported		
QPSK	0	Touch Left Open	4183	836.6	24.5	23.3	0.572	0.754	1	1
QPSK	0	Tilt Left Open	4183	836.6	24.5	23.3	0.225	0.297	1	2
QPSK	0	Touch Right Open	4183	836.6	24.5	23.3	0.455	0.600	1	3
QPSK	0	Tilt Right Open	4183	836.6	24.5	23.3	0.216	0.285	1	4

Note(s):

1. Circuit Switch (CS) - RMC 12.2kbps with Test loop mode 1 and TPC bits configured to All "1's".

8.2.2. UMTS FDD 5 – Body-Worn Mode Configuration 1g**Max Measured SAR = 0.837 (W/kg)****Max Reported SAR = 1.182 (W/kg)**

					Power (dBm)		1g : SAR Results (W/kg)		Note(s)	Scan No.
Mode or Modulation	Dist (mm)	Test Position	Channel No.	Freq (MHz)	Tune-up limit	Meas.	Meas.	Reported		
QPSK	15	Front Open	4183	836.6	24.5	23.3	0.379	0.500	1	5
QPSK	15	Front Closed	4183	836.6	24.5	23.3	0.301	0.397	1	6
QPSK	15	Back Open	4183	836.6	24.5	23.3	0.652	0.860	1	7
QPSK	15	Back Open	4132	826.4	24.5	23.0	0.628	0.887	1	8
QPSK	15	Back Open	4233	846.6	24.5	23.0	0.609	0.860	1	9
QPSK	15	Back Closed	4183	836.6	24.5	23.3	0.620	0.817	1	10
QPSK	15	Back Closed	4132	826.4	24.5	23.0	0.670	0.946	1	11
QPSK	15	Back Closed	4233	846.6	24.5	23.0	0.837	1.182	1, 2	12

Note(s):

1. Circuit Switch (CS) - RMC 12.2kbps with Test loop mode 1 and TPC bits configured to All "1's".
2. As per 865664 D01, the highest SAR measured > 0.8 W/kg has been re-measured and included in the report in section 9.1 under **SAR Measurement Variability and Measurement Uncertainty Analysis Results** Table.

*KDB 941225 D02 - SAR is not required for RMC+HSPA (HSDPA/HSUPA) channels when the maximum average output power is less than ¼ dB higher than that measured on the corresponding RMC channels and 1g SAR level reported in 'RMC 12.2kbps' is <75% SAR limit.

*As per 648474 D04 Handsets SAR v01r02, "When the reported SAR for a body-worn accessory, measured without a headset connected to the handset, is > 1.2 W/kg, the highest reported SAR configuration for that wireless mode and frequency band should be repeated for that body-worn accessory with a headset attached to the handset". Hence, Body worn configurations were not evaluated with PHF attached.

8.3. Bluetooth

8.3.1. Standalone SAR Test Exclusion Considerations

The 1-g and 10-g SAR test exclusion thresholds for 100 MHz to 6 GHz at test separation distances ≤ 50 mm are determined by:

$[(\text{max. power of channel, including tune-up tolerance, mW}) / (\text{min. test separation distance, mm})] \cdot [\sqrt{f(\text{GHz})}] \leq 3.0$, for 1-g SAR and ≤ 7.5 for 10-g extremity SAR, where

- $f_{(\text{GHz})}$ is the RF channel transmit frequency in GHz
- Power and distance are rounded to the nearest mW and mm before calculation
- The result is rounded to one decimal place for comparison

The test exclusions are applicable only when the minimum test separation distance is ≤ 50 mm and for transmission frequencies between 100 MHz and 6 GHz. When the minimum test separation distance is < 5 mm, a distance of 5 mm is applied to determine SAR test exclusion.

Body-worn Accessory Exposure Conditions

Max. tune-up tolerance limit		Min. test separation distance (mm)	Frequency (GHz)	Result
(dBm)	(mW)			
2.0	1.585	15	2.4	0.164

Conclusion:

The computed value is < 3 ; therefore, Bluetooth qualifies for Standalone SAR test exclusion.

8.3.2. Estimated SAR

When the standalone SAR test exclusion is applied to an antenna that transmits simultaneously with other antennas, the standalone SAR must be estimated according to following to determine simultaneous transmission SAR test exclusion:

- $(\text{max. power of channel, including tune-up tolerance, mW}) / (\text{min. test separation distance, mm}) \cdot [\sqrt{f(\text{GHz})}/x] \text{ W/kg}$ for test separation distances ≤ 50 mm; where $x = 7.5$ for 1-g SAR, and $x = 18.75$ for 10-g SAR.
- 0.4 W/kg for 1-g SAR and 1.0 W/kg for 10-g SAR, when the test separation distances is > 50 mm.

Estimated SAR Result for Body-worn Accessory Conditions:

Test Configuration	Max. tune-up tolerance limit (mW)	Min. test separation distance (mm)	Frequency (GHz)	Estimated 1-g SAR (W/kg)
Back/Front	1.585	15	2.4	0.022

8.4. Simultaneous Transmission SAR Analysis

Exposure Configuration	Combination under consideration	Config.	Technology Band	Highest Reported 1g SAR (W/kg)	Equipment Class	Max Rated Source base Avg Power + Max Tolerance [dBm]	Highest Reported Sum-SAR 1g-SAR (W/kg)	SPLSR Ratio
BODY-WORN (Separation Distance 15mm)	WWAN + WPAN	Back Closed	UMTS FDD 5	1.182	PCE	24.5	1.204	N/A
			<i>Bluetooth</i>	0.022	DSS	2.0		

9. SAR measurement variability

In accordance with published RF Exposure KDB procedure 865664 D01 SAR measurement 100 MHz to 6 GHz. These additional measurements are repeated after the completion of all measurements requiring the same head or body tissue-equivalent medium in a frequency band. The test device should be returned to ambient conditions (normal room temperature) with the battery fully charged before it is re-mounted on the device holder for the repeated measurement(s) to minimize any unexpected variations in the repeated results.

- 1) Repeated measurement is not required when the original highest measured SAR is < 0.80 W/kg; steps 2) through 4) do not apply.
- 2) When the original highest measured SAR is ≥ 0.80 W/kg, repeat that measurement once.
- 3) Perform a second repeated measurement only if the ratio of largest to smallest SAR for the original and first repeated measurements is > 1.20 or when the original or repeated measurement is ≥ 1.45 W/kg (~ 10% from the 1-g SAR limit).
- 4) Perform a third repeated measurement only if the original, first or second repeated measurement is ≥ 1.5 W/kg and the ratio of largest to smallest SAR for the original, first and second repeated measurements is > 1.20 .

9.1. Repeated Measurement Results

Exposure Configuration	Technology Band	Measured 1g -SAR (W/Kg)	Equipment Class	Max Meas. Source base Avg Power [dBm]	Ratio of Largest to Smallest SAR Measured
BODY WORN (Separation Distance 15mm)	UMTS FDD 5	0.837	PCE	24.5	1.07
		0.779			

Appendix 1. Test Equipment Used

UL No.	Instrument	Manufacturer	Type No.	Serial No.	Date Last Calibrated	Cal. Interval (Months)
A034	Narda 20W Termination	Narda	374BNM	8706	Calibrated as part of system	-
A1097	SMA Directional Coupler	MiDISCO	MDC6223-30	None	Calibrated as part of system	-
A1137	3dB Attenuator	Narda	779	04690	Calibrated as part of system	-
A1174	Dielectric Probe Kit	Agilent Technologies	85070C	Us99360072	Calibrated before use	-
A1328	Handset Positioner	Schmid & Partner Engineering AG	Modification	SD 000 H01 DA	-	-
A1182	Handset Positioner	Schmid & Partner Engineering AG	V3.0	None	-	-
A1184	Data Acquisition Electronics	Schmid & Partner Engineering AG	DAE3	394	16 May 2014	12
A1234	Data Acquisition Electronics	Schmid & Partner Engineering AG	DAE3	450	12 Nov 2013	12
A1186	Probe	Schmid & Partner Engineering AG	ET3 DV6	1529	22 May 2014	12
A2112	Probe	Schmid & Partner Engineering AG	ET3 DV6	1586	22 May 2014	12
A2201	900 MHz Dipole Kit	Schmid & Partner Engineering AG	D900V2	035	20 Jan 2014	12
A1497	Amplifier	Mini-Circuits	zh1-42w (sma)	e020105	Calibrated as part of system	-
A1566	SAM Phantom	Schmid & Partner Engineering AG	SAM a (Site 56)	002	Calibrated before use	-
A1238	SAM Phantom	Schmid & Partner Engineering AG	SAM b (Site 56)	001	Calibrated before use	-
A2125	SAM Phantom	Schmid & Partner Engineering AG	SAM b (Site 57)	TP-1031	Calibrated before use	-
A2124	SAM Phantom	Schmid & Partner Engineering AG	SAM a (Site 57)	TP-1030	Calibrated before use	-
A215	20 dB Attenuator	Narda	766-20	9402	Calibrated as part of system	-
A1531	Antenna	AARONIA AG	7025	02458	-	-
A2263	Digital Camera	Samsung	PL211	9453C90B 607487L	-	-
M1015	Network Analyser	Agilent Technologies	8753ES	US39172406	04 Oct 2013	12
C1145	Cable	Rosenberger MICRO-COAX	FA147A F003003030	41843-1	Calibrated as part of system	-
C1146	Cable	Rosenberger MICRO-COAX	FA147A F030003030	41752-1	Calibrated as part of system	-
G0528	Robot Power Supply	Schmid & Partner Engineering AG	DASY4	None	Calibrated before use	-
GO591	Robot Power Supply	Schmid & Partner Engineering AG	DASY4	None	Calibrated before use	-
G087	PSU	Thurlby Thandar	CPX200	100701	Calibrated before use	-
M1047	Robot Arm	Staubli	RX908 L	F00/SD8 9A1/A/01	Calibrated before use	-
M1653	Robot Arm	Staubli	RX908 L	F01/5J8	Calibrated	-

UL No.	Instrument	Manufacturer	Type No.	Serial No.	Date Last Calibrated	Cal. Interval (Months)
				6A1/C/01	before use	
M1839	Signal Generator	Rhode & Schwarz	SME06	837633/001	15 Apr 2014	12
M1840	Dual Channel Power Meter	Rhode & Schwarz	NRVD	844860/040	16 Apr 2014	12
M1848	Power Sensor	Rhode & Schwarz	NRV-Z1	831430/004	16 Apr 2014	12
M1847	Power Sensor	Rhode & Schwarz	NRV-Z1	831430/003	16 Apr 2014	12
M1838	Signal Generator	Rhode & Schwarz	SME06	831377/005	15 Apr 2014	12
M1023	Dual Channel Power Meter	Rhode & Schwarz	NRVD	863715/030	01 May 2014	12
M1634	Power Sensor	Rhode & Schwarz	NRV-Z1	860462/016	02 May 2014	12
M1635	Power Sensor	Rhode & Schwarz	NRV-Z1	860462/015	02 May 2014	12
M1270	Digital Thermometer	RS	N/A	N/A	Internal Cal 06 May 2014	12
S0566	SAR Lab	UL	Site 56	N/A	Calibrated before use	-
S0567	SAR Lab	UL	Site 57	N/A	Calibrated before use	-
M1775	Communication Test Set	Agilent Technologies	8960 Series 10 (E5515E)	GB46200666	31 Jan 2014	12
M1866	Communication Test Set	Rhode & Schwarz	CMW500	145922	23 Apr 2014	12

A.1.1. Calibration Certificates

This section contains the calibration certificates and data for the Probe(s) and Dipole(s) used, which are not included in the total number of pages for this report.



Accredited by the Swiss Accreditation Service (SAS)
The Swiss Accreditation Service is one of the signatories to the EA
Multilateral Agreement for the recognition of calibration certificates

Accreditation No.: **SCS 108**

A1186

Client **UL RFI UK**

Certificate No: **ET3-1529_May14**

CALIBRATION CERTIFICATE

Object **ET3DV6 - SN:1529**

Calibration procedure(s) **QA CAL-01.v9, QA CAL-23.v5, QA CAL-25.v6
Calibration procedure for dosimetric E-field probes**

Calibration date: **May 22, 2014**

This calibration certificate documents the traceability to national standards, which realize the physical units of measurements (SI).
The measurements and the uncertainties with confidence probability are given on the following pages and are part of the certificate.

All calibrations have been conducted in the closed laboratory facility: environment temperature $(22 \pm 3)^{\circ}\text{C}$ and humidity $< 70\%$.

Calibration Equipment used (M&TE critical for calibration)

Primary Standards	ID	Cal Date (Certificate No.)	Scheduled Calibration
Power meter E4419B	GB41293874	03-Apr-14 (No. 217-01911)	Apr-15
Power sensor E4412A	MY41498087	03-Apr-14 (No. 217-01911)	Apr-15
Reference 3 dB Attenuator	SN: S5054 (3c)	03-Apr-14 (No. 217-01915)	Apr-15
Reference 20 dB Attenuator	SN: S5277 (20x)	03-Apr-14 (No. 217-01919)	Apr-15
Reference 30 dB Attenuator	SN: S5129 (30b)	03-Apr-14 (No. 217-01920)	Apr-15
Reference Probe ES3DV2	SN: 3013	30-Dec-13 (No. ES3-3013_Dec13)	Dec-14
DAE4	SN: 660	13-Dec-13 (No. DAE4-660_Dec13)	Dec-14
Secondary Standards	ID	Check Date (in house)	Scheduled Check
RF generator HP 8648C	US3642U01700	4-Aug-99 (in house check Apr-13)	In house check: Apr-16
Network Analyzer HP 8753E	US37390585	18-Oct-01 (in house check Oct-13)	In house check: Oct-14

	Name	Function	Signature
Calibrated by:	Jeton Kastrati	Laboratory Technician	
Approved by:	Katja Pokovic	Technical Manager	
Issued: May 22, 2014			
This calibration certificate shall not be reproduced except in full without written approval of the laboratory.			



Accredited by the Swiss Accreditation Service (SAS)

Accreditation No.: **SCS 108**

The Swiss Accreditation Service is one of the signatories to the EA
 Multilateral Agreement for the recognition of calibration certificates

Glossary:

TSL	tissue simulating liquid
NORM _{x,y,z}	sensitivity in free space
ConvF	sensitivity in TSL / NORM _{x,y,z}
DCP	diode compression point
CF	crest factor (1/duty_cycle) of the RF signal
A, B, C, D	modulation dependent linearization parameters
Polarization φ	φ rotation around probe axis
Polarization ϑ	ϑ rotation around an axis that is in the plane normal to probe axis (at measurement center), i.e., $\vartheta = 0$ is normal to probe axis
Connector Angle	information used in DASY system to align probe sensor X to the robot coordinate system

Calibration is Performed According to the Following Standards:

- IEEE Std 1528-2013, "IEEE Recommended Practice for Determining the Peak Spatial-Averaged Specific Absorption Rate (SAR) in the Human Head from Wireless Communications Devices: Measurement Techniques", June 2013
- IEC 62209-1, "Procedure to measure the Specific Absorption Rate (SAR) for hand-held devices used in close proximity to the ear (frequency range of 300 MHz to 3 GHz)", February 2005

Methods Applied and Interpretation of Parameters:

- NORM_{x,y,z}**: Assessed for E-field polarization $\vartheta = 0$ ($f \leq 900$ MHz in TEM-cell; $f > 1800$ MHz: R22 waveguide). NORM_{x,y,z} are only intermediate values, i.e., the uncertainties of NORM_{x,y,z} does not affect the E²-field uncertainty inside TSL (see below *ConvF*).
- NORM(*f*)_{x,y,z}** = NORM_{x,y,z} * *frequency_response* (see Frequency Response Chart). This linearization is implemented in DASY4 software versions later than 4.2. The uncertainty of the frequency response is included in the stated uncertainty of *ConvF*.
- DCP_{x,y,z}**: DCP are numerical linearization parameters assessed based on the data of power sweep with CW signal (no uncertainty required). DCP does not depend on frequency nor media.
- PAR**: PAR is the Peak to Average Ratio that is not calibrated but determined based on the signal characteristics
- A_{x,y,z}; B_{x,y,z}; C_{x,y,z}; D_{x,y,z}; VR_{x,y,z}; A, B, C, D** are numerical linearization parameters assessed based on the data of power sweep for specific modulation signal. The parameters do not depend on frequency nor media. VR is the maximum calibration range expressed in RMS voltage across the diode.
- ConvF and Boundary Effect Parameters**: Assessed in flat phantom using E-field (or Temperature Transfer Standard for $f \leq 800$ MHz) and inside waveguide using analytical field distributions based on power measurements for $f > 800$ MHz. The same setups are used for assessment of the parameters applied for boundary compensation (alpha, depth) of which typical uncertainty values are given. These parameters are used in DASY4 software to improve probe accuracy close to the boundary. The sensitivity in TSL corresponds to NORM_{x,y,z} * ConvF whereby the uncertainty corresponds to that given for ConvF. A frequency dependent ConvF is used in DASY version 4.4 and higher which allows extending the validity from ± 50 MHz to ± 100 MHz.
- Spherical isotropy (3D deviation from isotropy)**: in a field of low gradients realized using a flat phantom exposed by a patch antenna.
- Sensor Offset**: The sensor offset corresponds to the offset of virtual measurement center from the probe tip (on probe axis). No tolerance required.
- Connector Angle**: The angle is assessed using the information gained by determining the NORM_x (no uncertainty required).

Probe ET3DV6

SN:1529

Manufactured: March 21, 2000
Calibrated: May 22, 2014

Calibrated for DASY/EASY Systems
(Note: non-compatible with DASY2 system!)

DASY/EASY - Parameters of Probe: ET3DV6 - SN:1529

Basic Calibration Parameters

	Sensor X	Sensor Y	Sensor Z	Unc (k=2)
Norm ($\mu\text{V}/(\text{V}/\text{m})^2$) ^A	1.69	1.91	1.80	± 10.1 %
DCP (mV) ^B	113.9	98.0	99.0	

Modulation Calibration Parameters

UID	Communication System Name		A dB	B dB/ μV	C	D dB	VR mV	Unc ^E (k=2)
0	CW	X	0.0	0.0	1.0	0.00	235.7	±3.0 %
		Y	0.0	0.0	1.0		226.3	
		Z	0.0	0.0	1.0		224.2	

The reported uncertainty of measurement is stated as the standard uncertainty of measurement multiplied by the coverage factor k=2, which for a normal distribution corresponds to a coverage probability of approximately 95%.

^A The uncertainties of NormX,Y,Z do not affect the E²-field uncertainty inside TSL (see Pages 5 and 6).

^B Numerical linearization parameter: uncertainty not required.

^E Uncertainty is determined using the max. deviation from linear response applying rectangular distribution and is expressed for the square of the field value.

DASY/EASY - Parameters of Probe: ET3DV6 - SN:1529

Calibration Parameter Determined in Head Tissue Simulating Media

f (MHz) ^C	Relative Permittivity ^F	Conductivity (S/m) ^F	ConvF X	ConvF Y	ConvF Z	Alpha ^G	Depth ^G (mm)	Unct. (k=2)
750	41.9	0.89	6.60	6.60	6.60	0.44	2.27	± 12.0 %
835	41.5	0.90	6.28	6.28	6.28	0.28	3.00	± 12.0 %
900	41.5	0.97	6.15	6.15	6.15	0.38	2.46	± 12.0 %
1450	40.5	1.20	5.23	5.23	5.23	0.53	2.94	± 12.0 %
1750	40.1	1.37	5.08	5.08	5.08	0.80	2.20	± 12.0 %
1900	40.0	1.40	4.76	4.76	4.76	0.80	2.21	± 12.0 %
2100	39.8	1.49	4.80	4.80	4.80	0.80	2.24	± 12.0 %
2300	39.5	1.67	4.36	4.36	4.36	0.80	2.02	± 12.0 %
2450	39.2	1.80	4.08	4.08	4.08	0.85	2.10	± 12.0 %

^C Frequency validity of ± 100 MHz only applies for DASY v4.4 and higher (see Page 2), else it is restricted to ± 50 MHz. The uncertainty is the RSS of the ConvF uncertainty at calibration frequency and the uncertainty for the indicated frequency band.

^F At frequencies below 3 GHz, the validity of tissue parameters (ϵ and σ) can be relaxed to ± 10% if liquid compensation formula is applied to measured SAR values. At frequencies above 3 GHz, the validity of tissue parameters (ϵ and σ) is restricted to ± 5%. The uncertainty is the RSS of the ConvF uncertainty for indicated target tissue parameters.

^G Alpha/Depth are determined during calibration. SPEAG warrants that the remaining deviation due to the boundary effect after compensation is always less than ± 1% for frequencies below 3 GHz and below ± 2% for frequencies between 3-6 GHz at any distance larger than half the probe tip diameter from the boundary.

DASY/EASY - Parameters of Probe: ET3DV6 - SN:1529

Calibration Parameter Determined in Body Tissue Simulating Media

f (MHz) ^C	Relative Permittivity ^F	Conductivity (S/m) ^F	ConvF X	ConvF Y	ConvF Z	Alpha ^G	Depth ^G (mm)	Unct. (k=2)
750	55.5	0.96	6.15	6.15	6.15	0.44	2.22	± 12.0 %
835	55.2	0.97	6.00	6.00	6.00	0.35	2.67	± 12.0 %
900	55.0	1.05	5.85	5.85	5.85	0.55	2.40	± 12.0 %
1450	54.0	1.30	4.92	4.92	4.92	0.80	1.99	± 12.0 %
1750	53.4	1.49	4.66	4.66	4.66	0.80	2.31	± 12.0 %
1900	53.3	1.52	4.46	4.46	4.46	0.80	2.28	± 12.0 %
2100	53.2	1.62	4.57	4.57	4.57	0.80	2.05	± 12.0 %
2300	52.9	1.81	4.18	4.18	4.18	0.80	1.64	± 12.0 %
2450	52.7	1.95	3.95	3.95	3.95	0.55	2.05	± 12.0 %

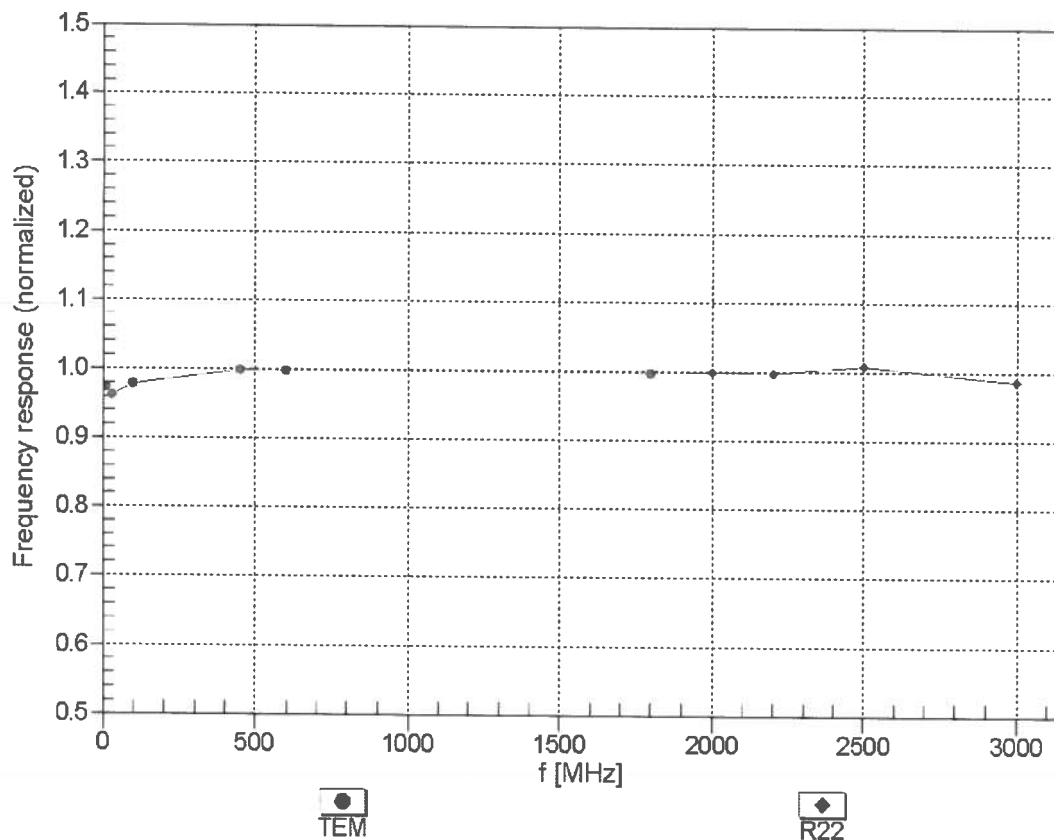
^C Frequency validity of ± 100 MHz only applies for DASY v4.4 and higher (see Page 2), else it is restricted to ± 50 MHz. The uncertainty is the RSS of the ConvF uncertainty at calibration frequency and the uncertainty for the indicated frequency band.

^F At frequencies below 3 GHz, the validity of tissue parameters (ϵ and σ) can be relaxed to ± 10% if liquid compensation formula is applied to measured SAR values. At frequencies above 3 GHz, the validity of tissue parameters (ϵ and σ) is restricted to ± 5%. The uncertainty is the RSS of the ConvF uncertainty for indicated target tissue parameters.

^G Alpha/Depth are determined during calibration. SPEAG warrants that the remaining deviation due to the boundary effect after compensation is always less than ± 1% for frequencies below 3 GHz and below ± 2% for frequencies between 3-6 GHz at any distance larger than half the probe tip diameter from the boundary.

Frequency Response of E-Field

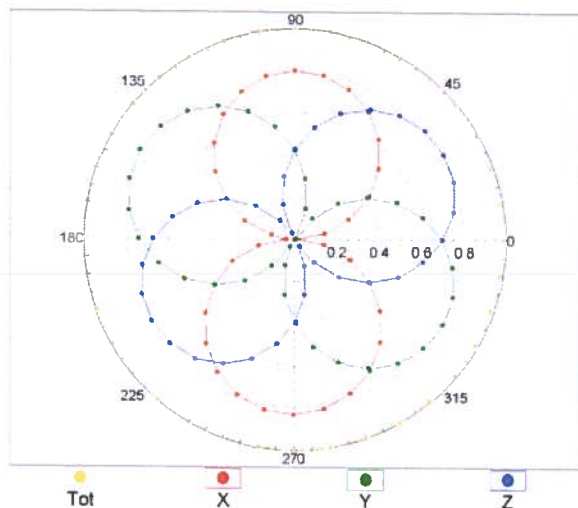
(TEM-Cell:ifi110 EXX, Waveguide: R22)



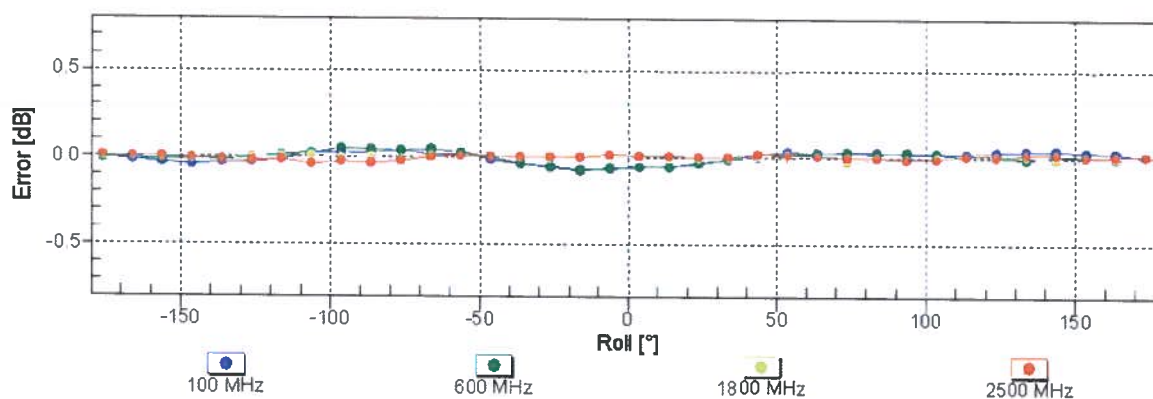
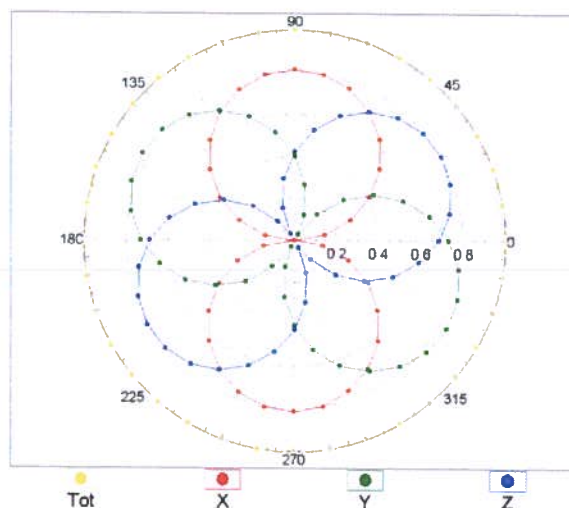
Uncertainty of Frequency Response of E-field: $\pm 6.3\%$ ($k=2$)

Receiving Pattern (ϕ), $\vartheta = 0^\circ$

f=600 MHz,TEM

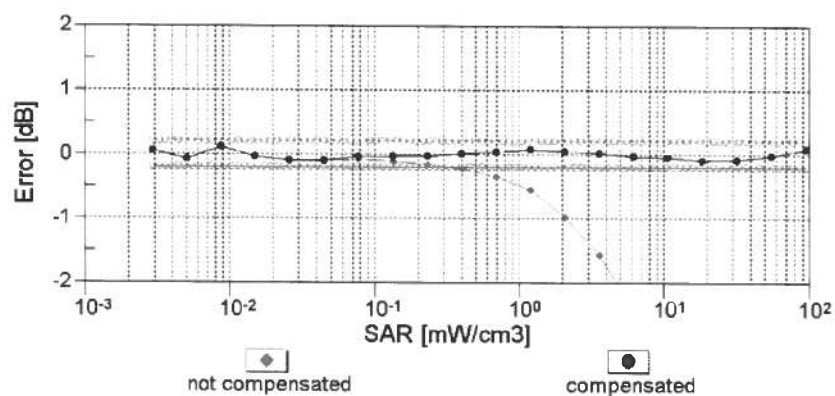
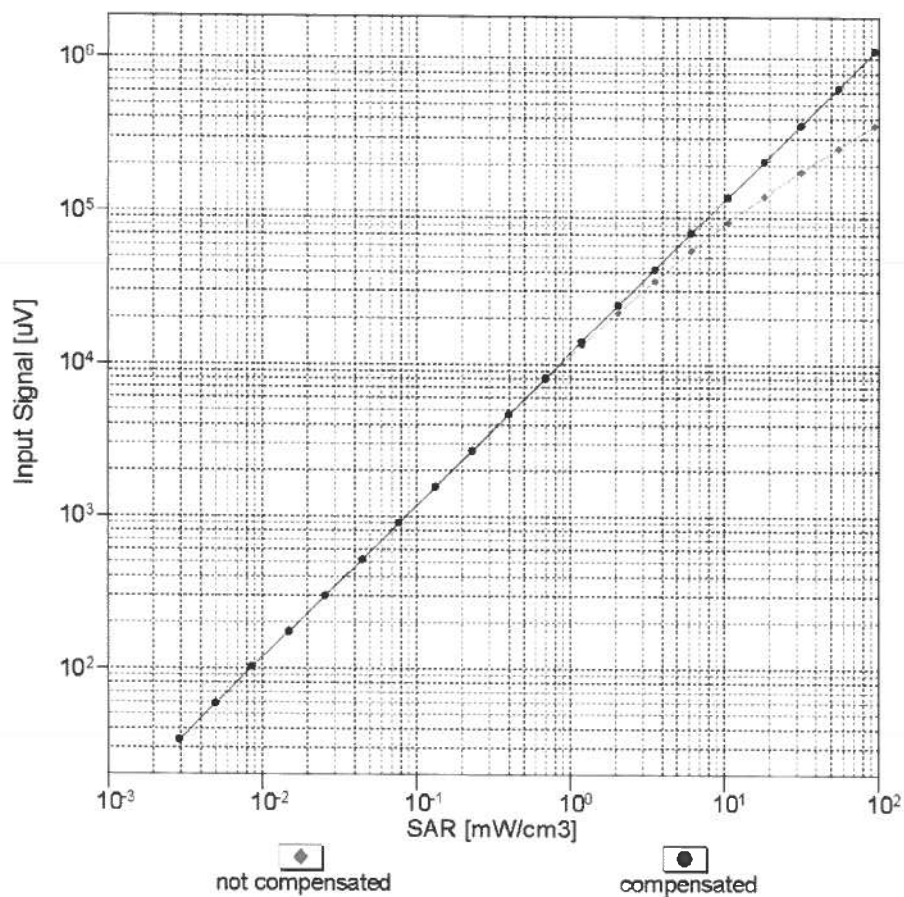


f=1800 MHz,R22



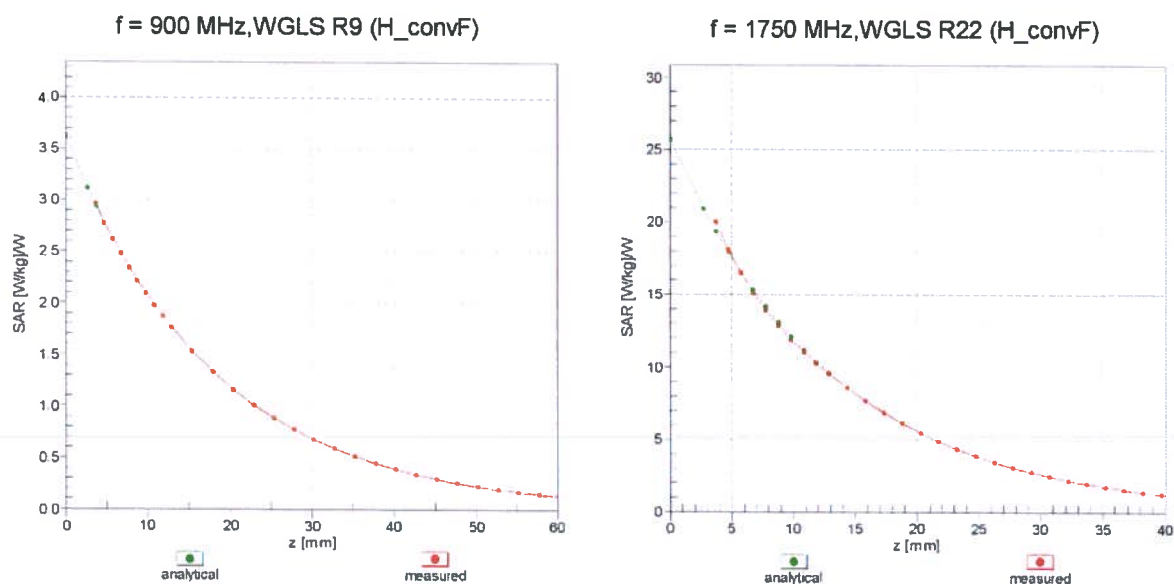
Uncertainty of Axial Isotropy Assessment: $\pm 0.5\%$ ($k=2$)

Dynamic Range $f(\text{SAR}_{\text{head}})$ (TEM cell, $f_{\text{eval}} = 1900 \text{ MHz}$)



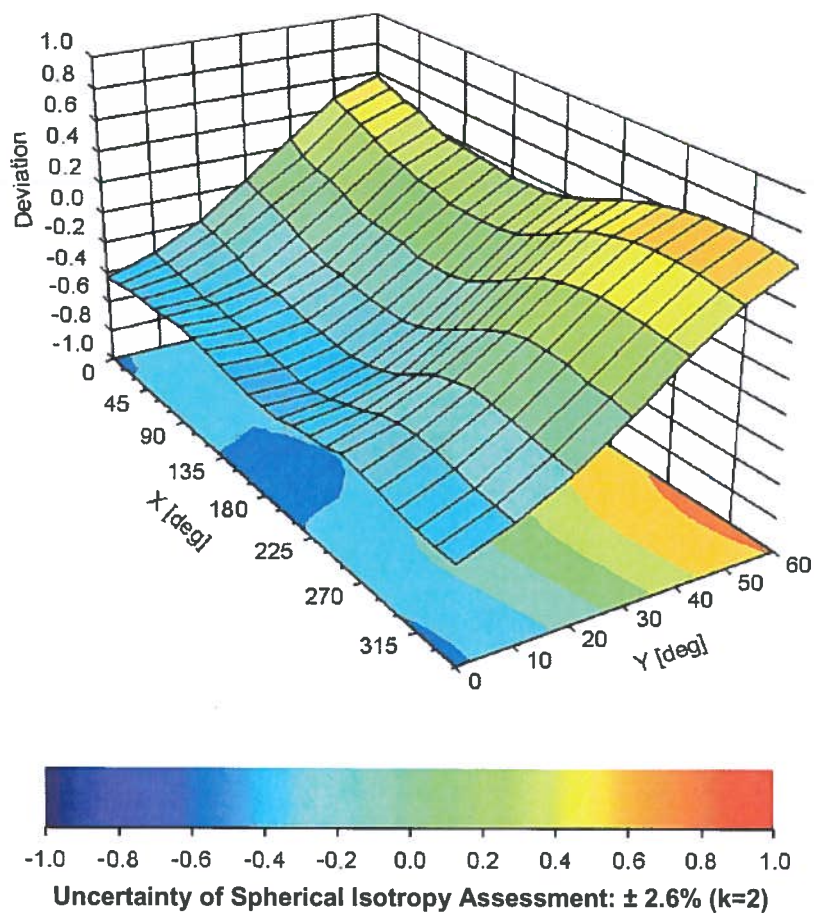
Uncertainty of Linearity Assessment: $\pm 0.6\%$ ($k=2$)

Conversion Factor Assessment



Deviation from Isotropy in Liquid

Error (ϕ , θ), $f = 900 \text{ MHz}$



DASY/EASY - Parameters of Probe: ET3DV6 - SN:1529

Other Probe Parameters

Sensor Arrangement	Triangular
Connector Angle (°)	-6.3
Mechanical Surface Detection Mode	enabled
Optical Surface Detection Mode	disabled
Probe Overall Length	337 mm
Probe Body Diameter	10 mm
Tip Length	10 mm
Tip Diameter	6.8 mm
Probe Tip to Sensor X Calibration Point	2.7 mm
Probe Tip to Sensor Y Calibration Point	2.7 mm
Probe Tip to Sensor Z Calibration Point	2.7 mm
Recommended Measurement Distance from Surface	4 mm



Accredited by the Swiss Accreditation Service (SAS)

The Swiss Accreditation Service is one of the signatories to the EA
Multilateral Agreement for the recognition of calibration certificates

Accreditation No.: **SCS 108**

Client **UL RFI UK**

Certificate No: **ET3-1586_May14**

CALIBRATION CERTIFICATE

Object **ET3DV6 - SN:1586**

Calibration procedure(s) **QA CAL-01.v9, QA CAL-23.v5, QA CAL-25.v6**
Calibration procedure for dosimetric E-field probes

Calibration date: **May 22, 2014**

This calibration certificate documents the traceability to national standards, which realize the physical units of measurements (SI).
The measurements and the uncertainties with confidence probability are given on the following pages and are part of the certificate.

All calibrations have been conducted in the closed laboratory facility: environment temperature (22 ± 3)°C and humidity < 70%.

Calibration Equipment used (M&TE critical for calibration)

Primary Standards	ID	Cal Date (Certificate No.)	Scheduled Calibration
Power meter E4419B	GB41293874	03-Apr-14 (No. 217-01911)	Apr-15
Power sensor E4412A	MY41498087	03-Apr-14 (No. 217-01911)	Apr-15
Reference 3 dB Attenuator	SN: S5054 (3c)	03-Apr-14 (No. 217-01915)	Apr-15
Reference 20 dB Attenuator	SN: S5277 (20x)	03-Apr-14 (No. 217-01919)	Apr-15
Reference 30 dB Attenuator	SN: S5129 (30b)	03-Apr-14 (No. 217-01920)	Apr-15
Reference Probe ES3DV2	SN: 3013	30-Dec-13 (No. ES3-3013_Dec13)	Dec-14
DAE4	SN: 660	13-Dec-13 (No. DAE4-660_Dec13)	Dec-14
Secondary Standards	ID	Check Date (in house)	Scheduled Check
RF generator HP 8648C	US3642U01700	4-Aug-99 (in house check Apr-13)	In house check: Apr-16
Network Analyzer HP 8753E	US37390585	18-Oct-01 (in house check Oct-13)	In house check: Oct-14

	Name	Function	Signature
Calibrated by:	Jeton Kastrati	Laboratory Technician	
Approved by:	Katja Pokovic	Technical Manager	
Issued: May 22, 2014			
This calibration certificate shall not be reproduced except in full without written approval of the laboratory.			



Accredited by the Swiss Accreditation Service (SAS)

Accreditation No.: **SCS 108**

The Swiss Accreditation Service is one of the signatories to the EA
 Multilateral Agreement for the recognition of calibration certificates

Glossary:

TSL	tissue simulating liquid
NORM _{x,y,z}	sensitivity in free space
ConvF	sensitivity in TSL / NORM _{x,y,z}
DCP	diode compression point
CF	crest factor (1/duty_cycle) of the RF signal
A, B, C, D	modulation dependent linearization parameters
Polarization φ	φ rotation around probe axis
Polarization ϑ	ϑ rotation around an axis that is in the plane normal to probe axis (at measurement center), i.e., $\vartheta = 0$ is normal to probe axis
Connector Angle	information used in DASY system to align probe sensor X to the robot coordinate system

Calibration is Performed According to the Following Standards:

- IEEE Std 1528-2013, "IEEE Recommended Practice for Determining the Peak Spatial-Averaged Specific Absorption Rate (SAR) in the Human Head from Wireless Communications Devices: Measurement Techniques", June 2013
- IEC 62209-1, "Procedure to measure the Specific Absorption Rate (SAR) for hand-held devices used in close proximity to the ear (frequency range of 300 MHz to 3 GHz)", February 2005

Methods Applied and Interpretation of Parameters:

- NORM_{x,y,z}**: Assessed for E-field polarization $\vartheta = 0$ ($f \leq 900$ MHz in TEM-cell; $f > 1800$ MHz: R22 waveguide). NORM_{x,y,z} are only intermediate values, i.e., the uncertainties of NORM_{x,y,z} does not affect the E²-field uncertainty inside TSL (see below ConvF).
- NORM(f)_{x,y,z}** = NORM_{x,y,z} * frequency_response (see Frequency Response Chart). This linearization is implemented in DASY4 software versions later than 4.2. The uncertainty of the frequency response is included in the stated uncertainty of ConvF.
- DCP_{x,y,z}**: DCP are numerical linearization parameters assessed based on the data of power sweep with CW signal (no uncertainty required). DCP does not depend on frequency nor media.
- PAR**: PAR is the Peak to Average Ratio that is not calibrated but determined based on the signal characteristics
- A_{x,y,z}; B_{x,y,z}; C_{x,y,z}; D_{x,y,z}; VR_{x,y,z}**: A, B, C, D are numerical linearization parameters assessed based on the data of power sweep for specific modulation signal. The parameters do not depend on frequency nor media. VR is the maximum calibration range expressed in RMS voltage across the diode.
- ConvF and Boundary Effect Parameters**: Assessed in flat phantom using E-field (or Temperature Transfer Standard for $f \leq 800$ MHz) and inside waveguide using analytical field distributions based on power measurements for $f > 800$ MHz. The same setups are used for assessment of the parameters applied for boundary compensation (alpha, depth) of which typical uncertainty values are given. These parameters are used in DASY4 software to improve probe accuracy close to the boundary. The sensitivity in TSL corresponds to NORM_{x,y,z} * ConvF whereby the uncertainty corresponds to that given for ConvF. A frequency dependent ConvF is used in DASY version 4.4 and higher which allows extending the validity from ± 50 MHz to ± 100 MHz.
- Spherical isotropy (3D deviation from isotropy)**: in a field of low gradients realized using a flat phantom exposed by a patch antenna.
- Sensor Offset**: The sensor offset corresponds to the offset of virtual measurement center from the probe tip (on probe axis). No tolerance required.
- Connector Angle**: The angle is assessed using the information gained by determining the NORM_x (no uncertainty required).

Probe ET3DV6

SN:1586

Manufactured: May 7, 2001
Calibrated: May 22, 2014

Calibrated for DASY/EASY Systems
(Note: non-compatible with DASY2 system!)

DASY/EASY - Parameters of Probe: ET3DV6 - SN:1586

Basic Calibration Parameters

	Sensor X	Sensor Y	Sensor Z	Unc (k=2)
Norm ($\mu\text{V}/(\text{V}/\text{m})^2$) ^A	1.87	1.89	1.93	± 10.1 %
DCP (mV) ^B	99.5	99.5	100.1	

Modulation Calibration Parameters

UID	Communication System Name		A dB	B dB $\sqrt{\mu\text{V}}$	C	D dB	VR mV	Unc ^E (k=2)
0	CW	X	0.0	0.0	1.0	0.00	228.9	±3.5 %
		Y	0.0	0.0	1.0		236.5	
		Z	0.0	0.0	1.0		229.7	

The reported uncertainty of measurement is stated as the standard uncertainty of measurement multiplied by the coverage factor k=2, which for a normal distribution corresponds to a coverage probability of approximately 95%.

^A The uncertainties of NormX,Y,Z do not affect the E²-field uncertainty inside TSL (see Pages 5 and 6).

^B Numerical linearization parameter: uncertainty not required.

^E Uncertainty is determined using the max. deviation from linear response applying rectangular distribution and is expressed for the square of the field value.

DASY/EASY - Parameters of Probe: ET3DV6 - SN:1586

Calibration Parameter Determined in Head Tissue Simulating Media

f (MHz) ^C	Relative Permittivity ^F	Conductivity (S/m) ^F	ConvF X	ConvF Y	ConvF Z	Alpha ^G	Depth ^G (mm)	Unct. (k=2)
750	41.9	0.89	6.82	6.82	6.82	0.30	3.00	± 12.0 %
835	41.5	0.90	6.54	6.54	6.54	0.32	3.00	± 12.0 %
900	41.5	0.97	6.34	6.34	6.34	0.32	3.00	± 12.0 %
1450	40.5	1.20	5.46	5.46	5.46	0.47	2.80	± 12.0 %
1750	40.1	1.37	5.39	5.39	5.39	0.76	2.16	± 12.0 %
1900	40.0	1.40	5.15	5.15	5.15	0.80	2.12	± 12.0 %
2100	39.8	1.49	5.19	5.19	5.19	0.80	2.02	± 12.0 %
2300	39.5	1.67	4.80	4.80	4.80	0.80	1.91	± 12.0 %
2450	39.2	1.80	4.53	4.53	4.53	0.70	1.95	± 12.0 %

^C Frequency validity of ± 100 MHz only applies for DASY v4.4 and higher (see Page 2), else it is restricted to ± 50 MHz. The uncertainty is the RSS of the ConvF uncertainty at calibration frequency and the uncertainty for the indicated frequency band.

^F At frequencies below 3 GHz, the validity of tissue parameters (ϵ and σ) can be relaxed to ± 10% if liquid compensation formula is applied to measured SAR values. At frequencies above 3 GHz, the validity of tissue parameters (ϵ and σ) is restricted to ± 5%. The uncertainty is the RSS of the ConvF uncertainty for indicated target tissue parameters.

^G Alpha/Depth are determined during calibration. SPEAG warrants that the remaining deviation due to the boundary effect after compensation is always less than ± 1% for frequencies below 3 GHz and below ± 2% for frequencies between 3-6 GHz at any distance larger than half the probe tip diameter from the boundary.

DASY/EASY - Parameters of Probe: ET3DV6 - SN:1586

Calibration Parameter Determined in Body Tissue Simulating Media

f (MHz) ^C	Relative Permittivity ^F	Conductivity (S/m) ^F	ConvF X	ConvF Y	ConvF Z	Alpha ^G	Depth ^G (mm)	Unct. (k=2)
750	55.5	0.96	6.32	6.32	6.32	0.35	3.00	± 12.0 %
835	55.2	0.97	6.22	6.22	6.22	0.38	3.00	± 12.0 %
900	55.0	1.05	6.09	6.09	6.09	0.40	2.97	± 12.0 %
1450	54.0	1.30	5.12	5.12	5.12	0.48	2.88	± 12.0 %
1750	53.4	1.49	4.94	4.94	4.94	0.80	2.49	± 12.0 %
1900	53.3	1.52	4.69	4.69	4.69	0.80	2.32	± 12.0 %
2100	53.2	1.62	4.78	4.78	4.78	0.80	2.23	± 12.0 %
2300	52.9	1.81	4.35	4.35	4.35	0.80	1.73	± 12.0 %
2450	52.7	1.95	4.12	4.12	4.12	0.45	2.05	± 12.0 %

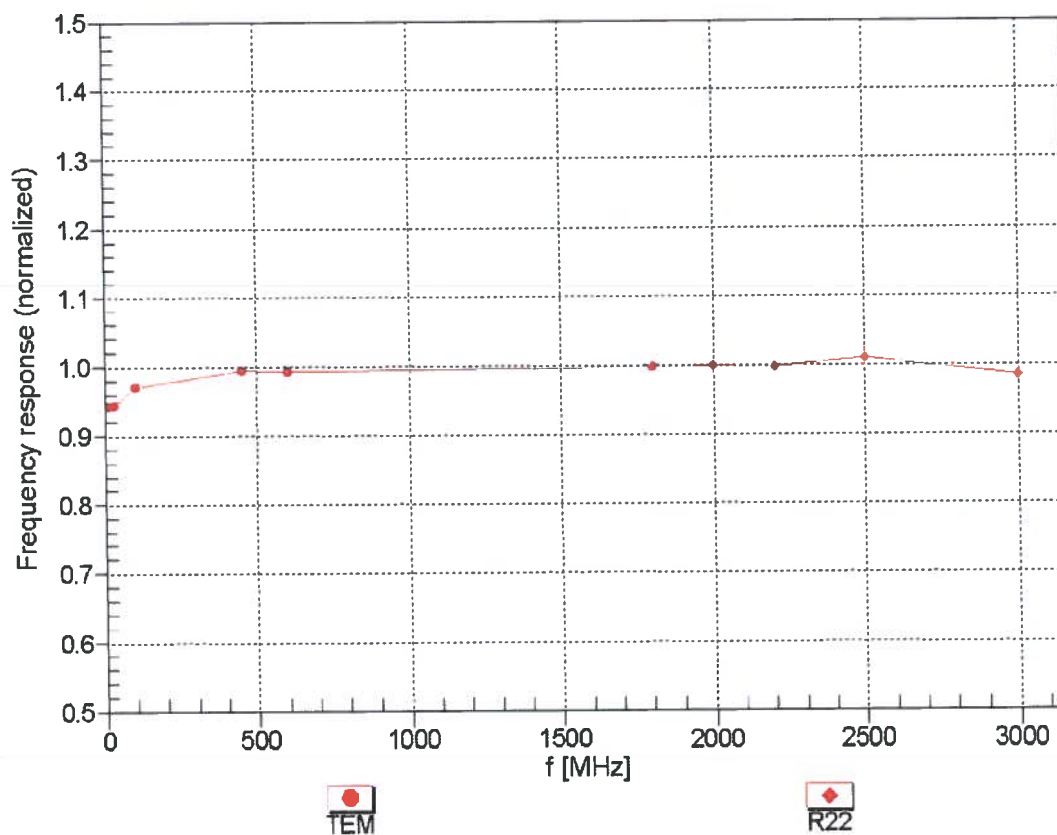
^C Frequency validity of ± 100 MHz only applies for DASY v4.4 and higher (see Page 2), else it is restricted to ± 50 MHz. The uncertainty is the RSS of the ConvF uncertainty at calibration frequency and the uncertainty for the indicated frequency band.

^F At frequencies below 3 GHz, the validity of tissue parameters (ϵ and σ) can be relaxed to ± 10% if liquid compensation formula is applied to measured SAR values. At frequencies above 3 GHz, the validity of tissue parameters (ϵ and σ) is restricted to ± 5%. The uncertainty is the RSS of the ConvF uncertainty for indicated target tissue parameters.

^G Alpha/Depth are determined during calibration. SPEAG warrants that the remaining deviation due to the boundary effect after compensation is always less than ± 1% for frequencies below 3 GHz and below ± 2% for frequencies between 3-6 GHz at any distance larger than half the probe tip diameter from the boundary.

Frequency Response of E-Field

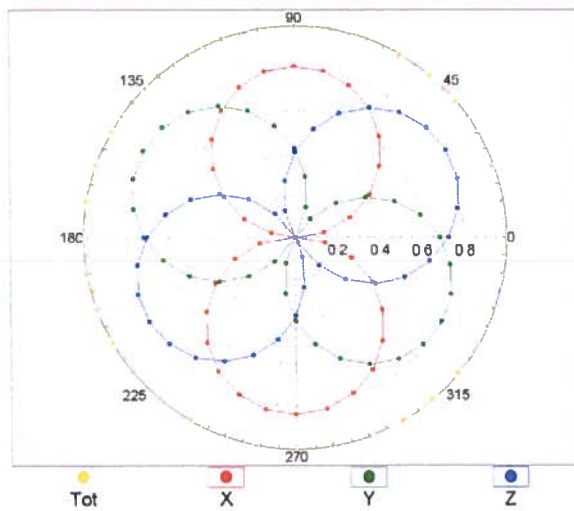
(TEM-Cell:ifi110 EXX, Waveguide: R22)



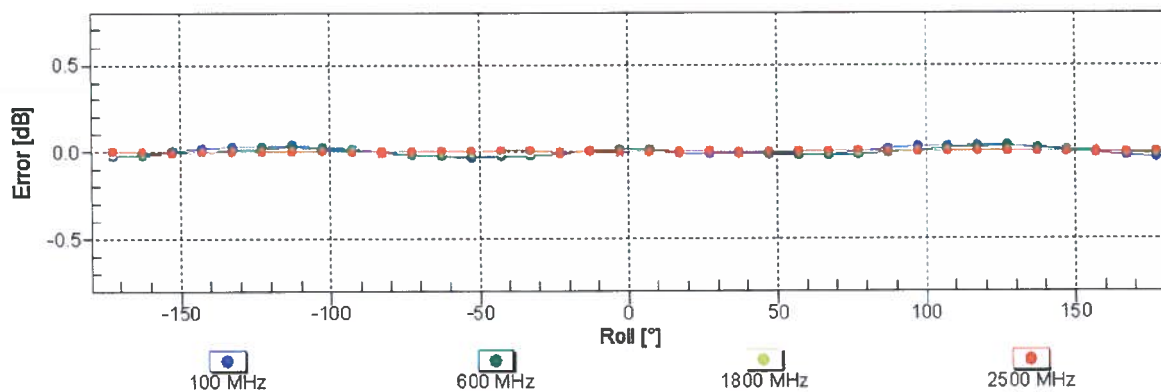
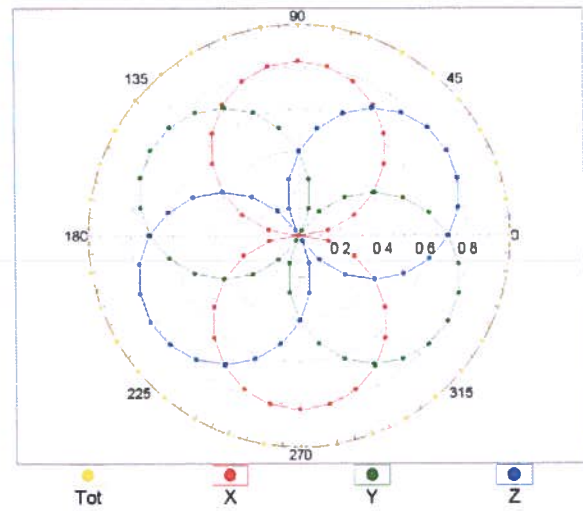
Uncertainty of Frequency Response of E-field: $\pm 6.3\%$ (k=2)

Receiving Pattern (ϕ), $\vartheta = 0^\circ$

f=600 MHz,TEM

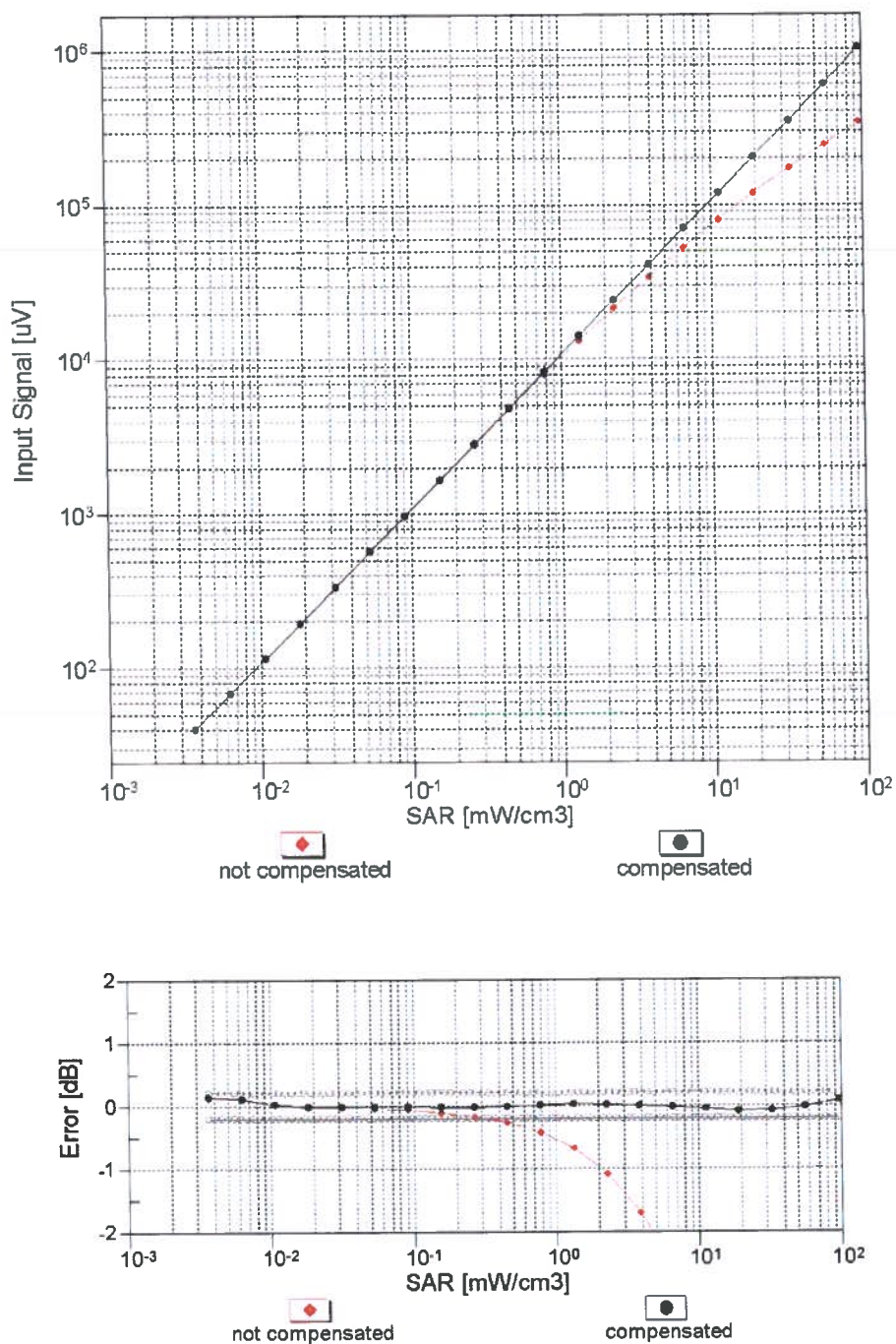


f=1800 MHz,R22



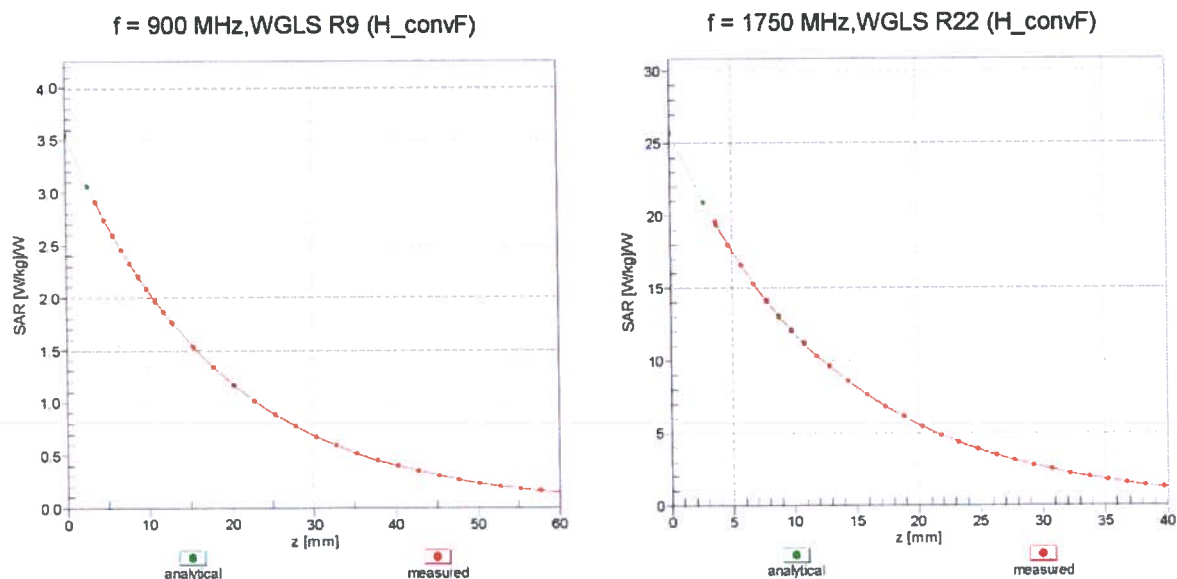
Uncertainty of Axial Isotropy Assessment: $\pm 0.5\%$ (k=2)

Dynamic Range $f(\text{SAR}_{\text{head}})$ (TEM cell , $f_{\text{eval}} = 1900 \text{ MHz}$)



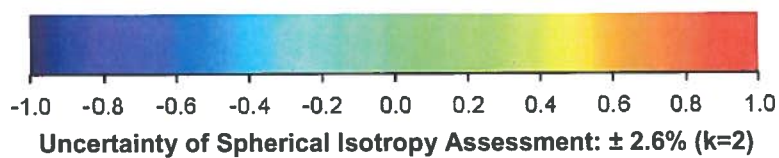
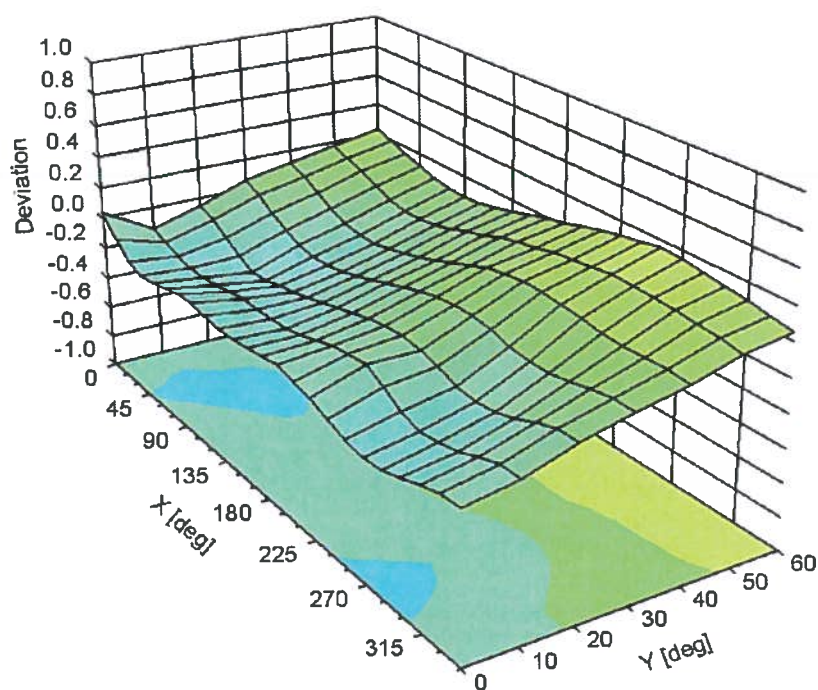
Uncertainty of Linearity Assessment: $\pm 0.6\%$ ($k=2$)

Conversion Factor Assessment



Deviation from Isotropy in Liquid

Error (ϕ, θ), $f = 900 \text{ MHz}$



DASY/EASY - Parameters of Probe: ET3DV6 - SN:1586

Other Probe Parameters

Sensor Arrangement	Triangular
Connector Angle (°)	-52.7
Mechanical Surface Detection Mode	enabled
Optical Surface Detection Mode	disabled
Probe Overall Length	337 mm
Probe Body Diameter	10 mm
Tip Length	10 mm
Tip Diameter	6.8 mm
Probe Tip to Sensor X Calibration Point	2.7 mm
Probe Tip to Sensor Y Calibration Point	2.7 mm
Probe Tip to Sensor Z Calibration Point	2.7 mm
Recommended Measurement Distance from Surface	4 mm



Accredited by the Swiss Accreditation Service (SAS)
The Swiss Accreditation Service is one of the signatories to the EA
Multilateral Agreement for the recognition of calibration certificates

Accreditation No.: SCS 108

Client UL RFI UK

A2201

Certificate No: D900V2-035_Jan14

CALIBRATION CERTIFICATE

Object D900V2 - SN: 035

Calibration procedure(s) QA CAL-05.v9
Calibration procedure for dipole validation kits above 700 MHz

Calibration date: January 20, 2014

This calibration certificate documents the traceability to national standards, which realize the physical units of measurements (SI).
The measurements and the uncertainties with confidence probability are given on the following pages and are part of the certificate.

All calibrations have been conducted in the closed laboratory facility: environment temperature $(22 \pm 3)^{\circ}\text{C}$ and humidity $< 70\%$.

Calibration Equipment used (M&TE critical for calibration)

Primary Standards	ID #	Cal Date (Certificate No.)	Scheduled Calibration
Power meter EPM-442A	GB37480704	09-Oct-13 (No. 217-01827)	Oct-14
Power sensor HP 8481A	US37292783	09-Oct-13 (No. 217-01827)	Oct-14
Power sensor HP 8481A	MY41092317	09-Oct-13 (No. 217-01828)	Oct-14
Reference 20 dB Attenuator	SN: 5058 (20k)	04-Apr-13 (No. 217-01736)	Apr-14
Type-N mismatch combination	SN: 5047.3 / 06327	04-Apr-13 (No. 217-01739)	Apr-14
Reference Probe ES3DV3	SN: 3205	30-Dec-13 (No. ES3-3205_Dec13)	Dec-14
DAE4	SN: 601	25-Apr-13 (No. DAE4-601_Apr13)	Apr-14
Secondary Standards	ID #	Check Date (in house)	Scheduled Check
RF generator R&S SMT-06	100005	04-Aug-99 (in house check Oct-13)	In house check: Oct-16
Network Analyzer HP 8753E	US37390585 S4206	18-Oct-01 (in house check Oct-13)	In house check: Oct-14

Calibrated by: Name Israe El-Naouq Function Laboratory Technician

Approved by: Katja Pokovic Technical Manager

Signature

Issued: January 21, 2014

This calibration certificate shall not be reproduced except in full without written approval of the laboratory.



Accredited by the Swiss Accreditation Service (SAS)
The Swiss Accreditation Service is one of the signatories to the EA
Multilateral Agreement for the recognition of calibration certificates

Accreditation No.: **SCS 108**

Glossary:

TSL	tissue simulating liquid
ConvF	sensitivity in TSL / NORM x,y,z
N/A	not applicable or not measured

Calibration is Performed According to the Following Standards:

- IEEE Std 1528-2013, "IEEE Recommended Practice for Determining the Peak Spatial-Averaged Specific Absorption Rate (SAR) in the Human Head from Wireless Communications Devices: Measurement Techniques", June 2013
- IEC 62209-1, "Procedure to measure the Specific Absorption Rate (SAR) for hand-held devices used in close proximity to the ear (frequency range of 300 MHz to 3 GHz)", February 2005
- KDB 865664, "SAR Measurement Requirements for 100 MHz to 6 GHz"

Additional Documentation:

- DASY4/5 System Handbook

Methods Applied and Interpretation of Parameters:

- Measurement Conditions:** Further details are available from the Validation Report at the end of the certificate. All figures stated in the certificate are valid at the frequency indicated.
- Antenna Parameters with TSL:** The dipole is mounted with the spacer to position its feed point exactly below the center marking of the flat phantom section, with the arms oriented parallel to the body axis.
- Feed Point Impedance and Return Loss:** These parameters are measured with the dipole positioned under the liquid filled phantom. The impedance stated is transformed from the measurement at the SMA connector to the feed point. The Return Loss ensures low reflected power. No uncertainty required.
- Electrical Delay:** One-way delay between the SMA connector and the antenna feed point. No uncertainty required.
- SAR measured:** SAR measured at the stated antenna input power.
- SAR normalized:** SAR as measured, normalized to an input power of 1 W at the antenna connector.
- SAR for nominal TSL parameters:** The measured TSL parameters are used to calculate the nominal SAR result.

The reported uncertainty of measurement is stated as the standard uncertainty of measurement multiplied by the coverage factor $k=2$, which for a normal distribution corresponds to a coverage probability of approximately 95%.

Measurement Conditions

DASY system configuration, as far as not given on page 1.

DASY Version	DASY5	V52.8.7
Extrapolation	Advanced Extrapolation	
Phantom	Modular Flat Phantom	
Distance Dipole Center - TSL	15 mm	with Spacer
Zoom Scan Resolution	dx, dy, dz = 5 mm	
Frequency	900 MHz \pm 1 MHz	

Head TSL parameters

The following parameters and calculations were applied.

	Temperature	Permittivity	Conductivity
Nominal Head TSL parameters	22.0 °C	41.5	0.97 mho/m
Measured Head TSL parameters	(22.0 \pm 0.2) °C	40.4 \pm 6 %	0.97 mho/m \pm 6 %
Head TSL temperature change during test	< 0.5 °C	----	----

SAR result with Head TSL

SAR averaged over 1 cm ³ (1 g) of Head TSL	Condition	
SAR measured	250 mW input power	2.63 W/kg
SAR for nominal Head TSL parameters	normalized to 1W	10.5 W/kg \pm 17.0 % (k=2)

SAR averaged over 10 cm ³ (10 g) of Head TSL	condition	
SAR measured	250 mW input power	1.68 W/kg
SAR for nominal Head TSL parameters	normalized to 1W	6.69 W/kg \pm 16.5 % (k=2)

Body TSL parameters

The following parameters and calculations were applied.

	Temperature	Permittivity	Conductivity
Nominal Body TSL parameters	22.0 °C	55.0	1.05 mho/m
Measured Body TSL parameters	(22.0 \pm 0.2) °C	53.6 \pm 6 %	1.03 mho/m \pm 6 %
Body TSL temperature change during test	< 0.5 °C	----	----

SAR result with Body TSL

SAR averaged over 1 cm ³ (1 g) of Body TSL	Condition	
SAR measured	250 mW input power	2.59 W/kg
SAR for nominal Body TSL parameters	normalized to 1W	10.4 W/kg \pm 17.0 % (k=2)

SAR averaged over 10 cm ³ (10 g) of Body TSL	condition	
SAR measured	250 mW input power	1.67 W/kg
SAR for nominal Body TSL parameters	normalized to 1W	6.73 W/kg \pm 16.5 % (k=2)

Appendix

Antenna Parameters with Head TSL

Impedance, transformed to feed point	49.6 Ω - 2.7 j Ω
Return Loss	- 31.2 dB

Antenna Parameters with Body TSL

Impedance, transformed to feed point	45.1 Ω - 5.7 j Ω
Return Loss	- 22.0 dB

General Antenna Parameters and Design

Electrical Delay (one direction)	1.402 ns
----------------------------------	----------

After long term use with 100W radiated power, only a slight warming of the dipole near the feedpoint can be measured.

The dipole is made of standard semirigid coaxial cable. The center conductor of the feeding line is directly connected to the second arm of the dipole. The antenna is therefore short-circuited for DC-signals. On some of the dipoles, small end caps are added to the dipole arms in order to improve matching when loaded according to the position as explained in the "Measurement Conditions" paragraph. The SAR data are not affected by this change. The overall dipole length is still according to the Standard.

No excessive force must be applied to the dipole arms, because they might bend or the soldered connections near the feedpoint may be damaged.

Additional EUT Data

Manufactured by	SPEAG
Manufactured on	February 26, 1998

DASY5 Validation Report for Head TSL

Date: 20.01.2014

Test Laboratory: SPEAG, Zurich, Switzerland

DUT: Dipole 900 MHz; Type: D900V2; Serial: D900V2 - SN: 035

Communication System: UID 0 - CW; Frequency: 900 MHz

Medium parameters used: $f = 900 \text{ MHz}$; $\sigma = 0.97 \text{ S/m}$; $\epsilon_r = 40.4$; $\rho = 1000 \text{ kg/m}^3$

Phantom section: Flat Section

Measurement Standard: DASY5 (IEEE/IEC/ANSI C63.19-2007)

DASY52 Configuration:

- Probe: ES3DV3 - SN3205; ConvF(6.09, 6.09, 6.09); Calibrated: 30.12.2013;
- Sensor-Surface: 3mm (Mechanical Surface Detection)
- Electronics: DAE4 Sn601; Calibrated: 25.04.2013
- Phantom: Flat Phantom 4.9L; Type: QD000P49AA; Serial: 1001
- DASY52 52.8.7(1137); SEMCAD X 14.6.10(7164)

Dipole Calibration for Head Tissue/Pin=250 mW, d=15mm/Zoom Scan (7x7x7)/Cube 0:

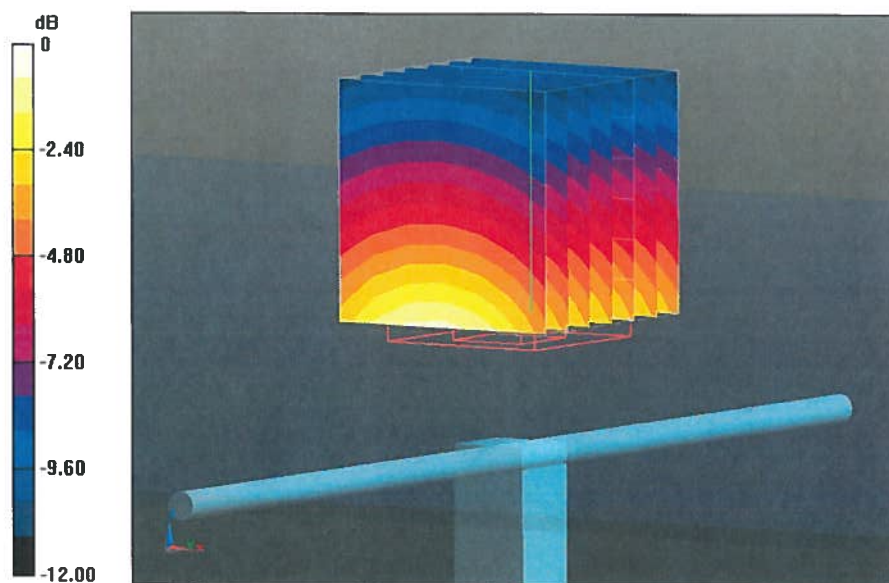
Measurement grid: $dx=5\text{mm}$, $dy=5\text{mm}$, $dz=5\text{mm}$

Reference Value = 57.820 V/m; Power Drift = 0.04 dB

Peak SAR (extrapolated) = 3.99 W/kg

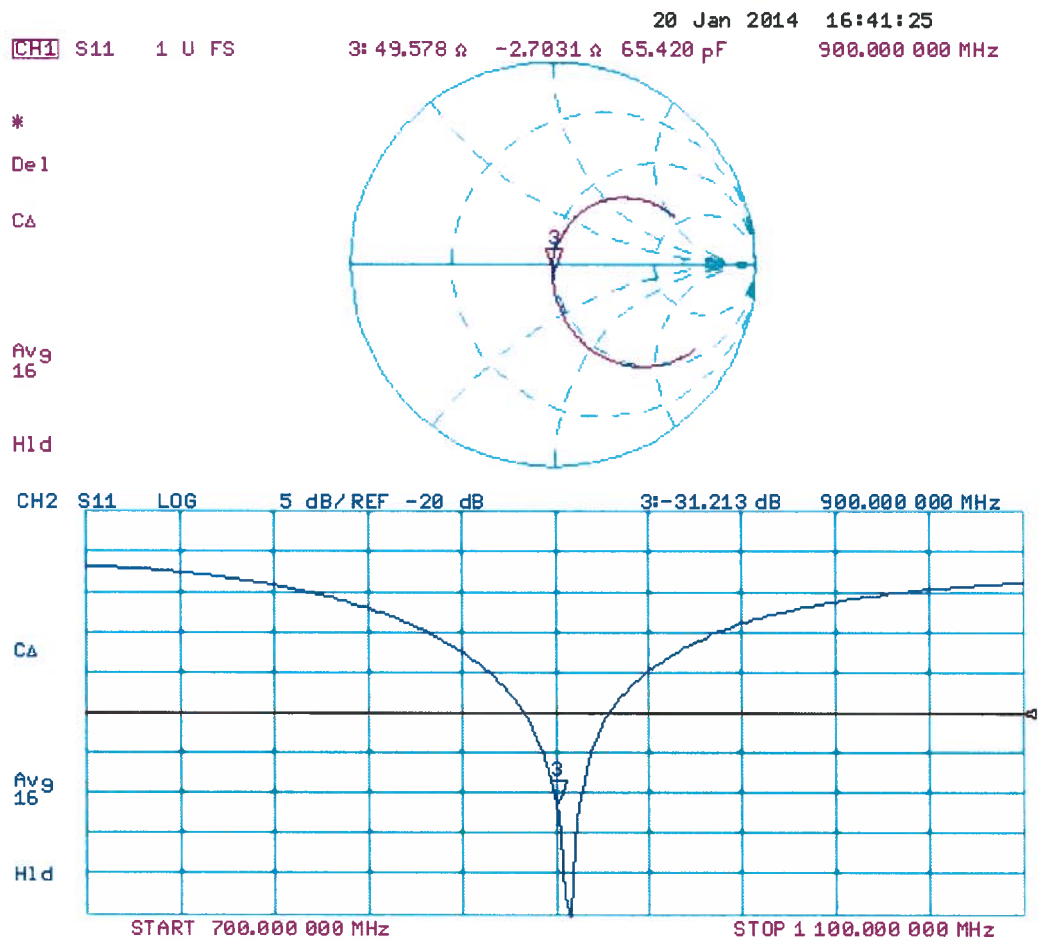
SAR(1 g) = 2.63 W/kg; SAR(10 g) = 1.68 W/kg

Maximum value of SAR (measured) = 3.07 W/kg



0 dB = 3.07 W/kg = 4.87 dBW/kg

Impedance Measurement Plot for Head TSL



DASY5 Validation Report for Body TSL

Date: 20.01.2014

Test Laboratory: SPEAG, Zurich, Switzerland

DUT: Dipole 900 MHz; Type: D900V2; Serial: D900V2 - SN: 035

Communication System: UID 0 - CW; Frequency: 900 MHz

Medium parameters used: $f = 900 \text{ MHz}$; $\sigma = 1.03 \text{ S/m}$; $\epsilon_r = 53.6$; $\rho = 1000 \text{ kg/m}^3$

Phantom section: Flat Section

Measurement Standard: DASY5 (IEEE/IEC/ANSI C63.19-2007)

DASY52 Configuration:

- Probe: ES3DV3 - SN3205; ConvF(5.98, 5.98, 5.98); Calibrated: 30.12.2013;
- Sensor-Surface: 3mm (Mechanical Surface Detection)
- Electronics: DAE4 Sn601; Calibrated: 25.04.2013
- Phantom: Flat Phantom 4.9L; Type: QD000P49AA; Serial: 1001
- DASY52 52.8.7(1137); SEMCAD X 14.6.10(7164)

Dipole Calibration for Body Tissue/Pin=250 mW, d=15mm 2/Zoom Scan (7x7x7)/Cube 0:

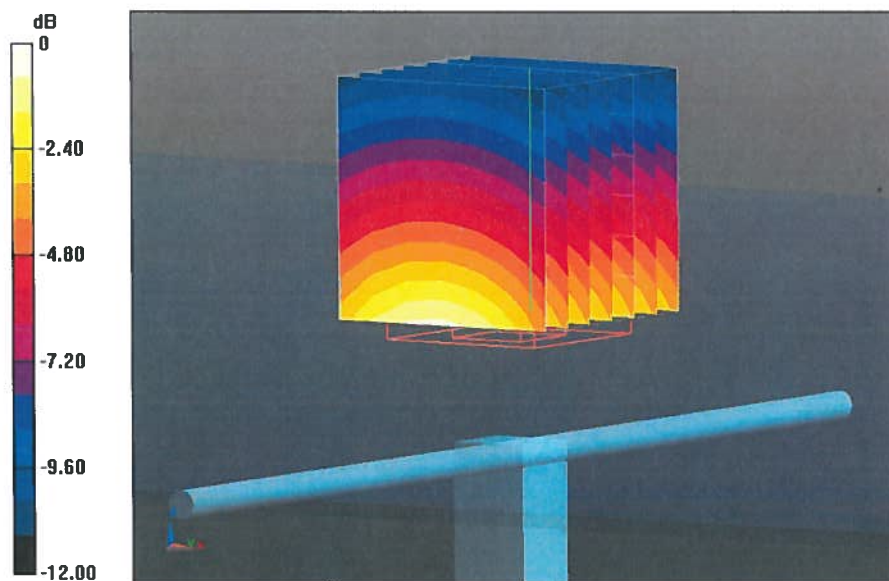
Measurement grid: dx=5mm, dy=5mm, dz=5mm

Reference Value = 56.172 V/m; Power Drift = -0.00 dB

Peak SAR (extrapolated) = 3.86 W/kg

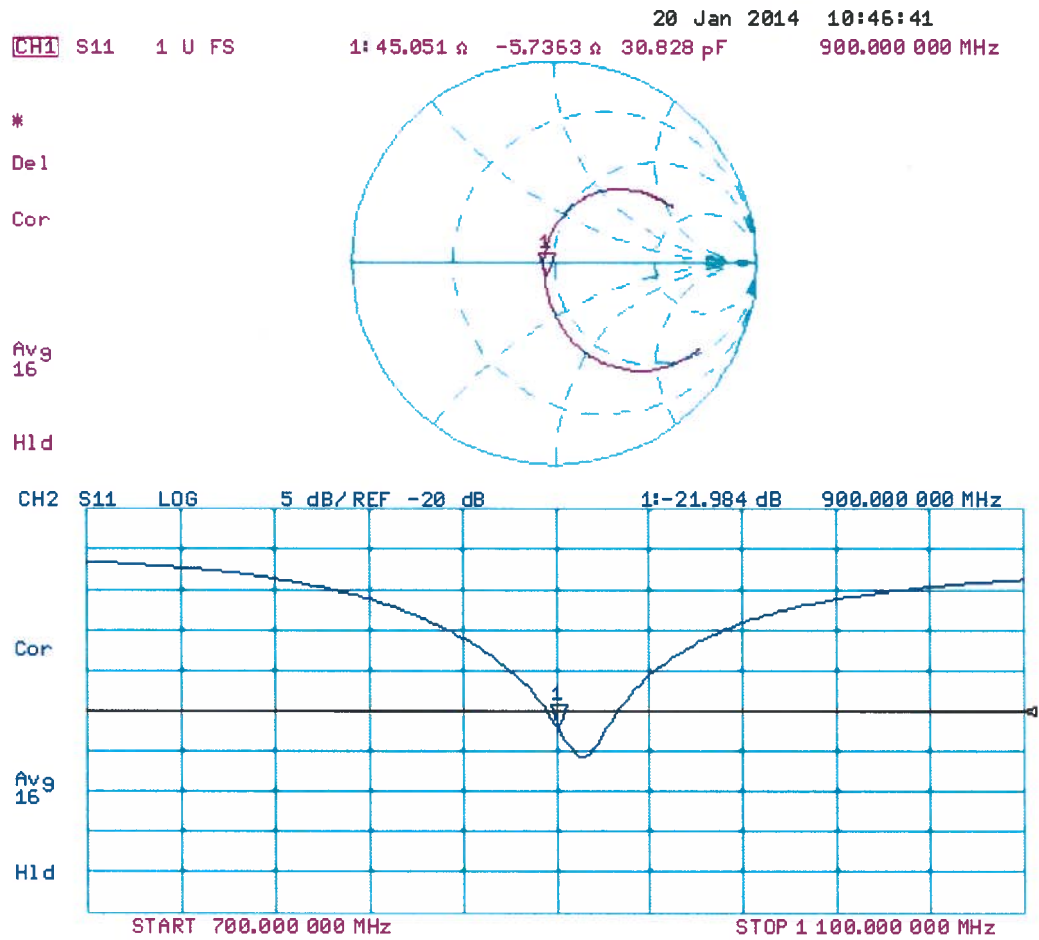
SAR(1 g) = 2.59 W/kg; SAR(10 g) = 1.67 W/kg

Maximum value of SAR (measured) = 3.01 W/kg



0 dB = 3.01 W/kg = 4.79 dBW/kg

Impedance Measurement Plot for Body TSL



Appendix 2. Measurement Methods

A.2.1. Evaluation Procedure

The Specific Absorption Rate (SAR) evaluation was performed in the following manner:

- a) (i) The evaluation was performed in an applicable area of the phantom depending on the type of device being tested. For devices worn about the ear during normal operation, both the left and right ear positions were evaluated at the centre frequency of the band at maximum power. The side, which produced the greatest SAR, determined which side of the phantom would be used for the entire evaluation. The positioning of the head worn device relative to the phantom was dictated by the test specification identified in section 3.1 of this report.
(ii) For body worn devices or devices which can be operated within 20 cm of the body, the flat section of the SAM phantom was used where the size of the device(s) is normal. For bigger devices and base station the 2mm Oval phantom is used for evaluation. The type of device being evaluated dictated the distance of the EUT to the outer surface of the phantom flat section.
- b) The SAR was determined by a pre-defined procedure within the DASY4 software. The exposed region of the phantom was scanned near the inner surface with a grid spacing of 20mm x 20mm or appropriate resolution.
- c) A 5x5x7 matrix for measurement < 2.0 GHz, 7x7x7 matrix for measurement 2.0 GHz to 3.0 GHz, and 7x7x12 for > 5.0 GHz was performed around the greatest spatial SAR distribution found during the area scan of the applicable exposed region. SAR values were then calculated using a 3-D spline interpolation algorithm and averaged over spatial volumes of 1 and 10 grams.
- d) If the EUT had any appreciable drift over the course of the evaluation, then the EUT was re-evaluated. Any unusual anomalies over the course of the test also warranted a re-evaluation.

A.2.2. Specific Absorption Rate (SAR) Measurements to 865664 D01 SAR Measurement 100 MHz to 6MHz

Evaluating Compliance with FCC Guidelines for Human Exposure to Radio Frequency Electromagnetic Fields

SAR measurements were performed in accordance with IEEE 1528 and FCC KDB procedures, against appropriate limits for each measurement position in accordance with the standard. In some cases the FCC was contacted using a PBA or KDB process to ensure test is performed correctly.

The test was performed in a shielded enclosure with the temperature controlled to remain between +18.0°C and +25.0°C. The tissue equivalent material fluid temperature was controlled to give a maximum variation of $\pm 2.0^\circ\text{C}$

Prior to any SAR measurements on the EUT, system Check and material dielectric property measurements were conducted. In the absence of a detailed procedure within the specification, system Check and material dielectric property measurements were performed in accordance with FCC KDB publication 865664 D01.

Following the successful system Check and material dielectric property measurements, a SAR versus time sweep shall be performed within 10 mm of the phantom inner surface. If the EUT power output is stable after three minutes then the measurement probe will perform a coarse surface level scan at each test position in order to ascertain the location of the maximum local SAR level. Once this area had been established, a 5x5x7 cube of 175 points for frequency below 2.0 GHz, above 2.0GHz up to 3.0 GHz 7x7x7 cube of 343 points and a 7x7x12 cube of 588 points for frequency 5.0 GHz and above will be centred at the area of concern. Extrapolation and interpolation will then be carried out on the 27g of tissue and the highest averaged SAR over a 1g cube determined.

Once the maximum interpolated SAR measurement is complete; the coarse scan is visually assessed to check for secondary peaks within 50% of the maximum SAR level. If there are any further SAR measurements required, extra 5x5x7 or 7x7x7 or 7x7x12 cubes shall be centred on each of these extra local SAR maxima.

At the end of each position test case a second time sweep shall be performed to check whether the EUT has remained stable throughout the test.

Appendix 3. SAR Distribution Scans

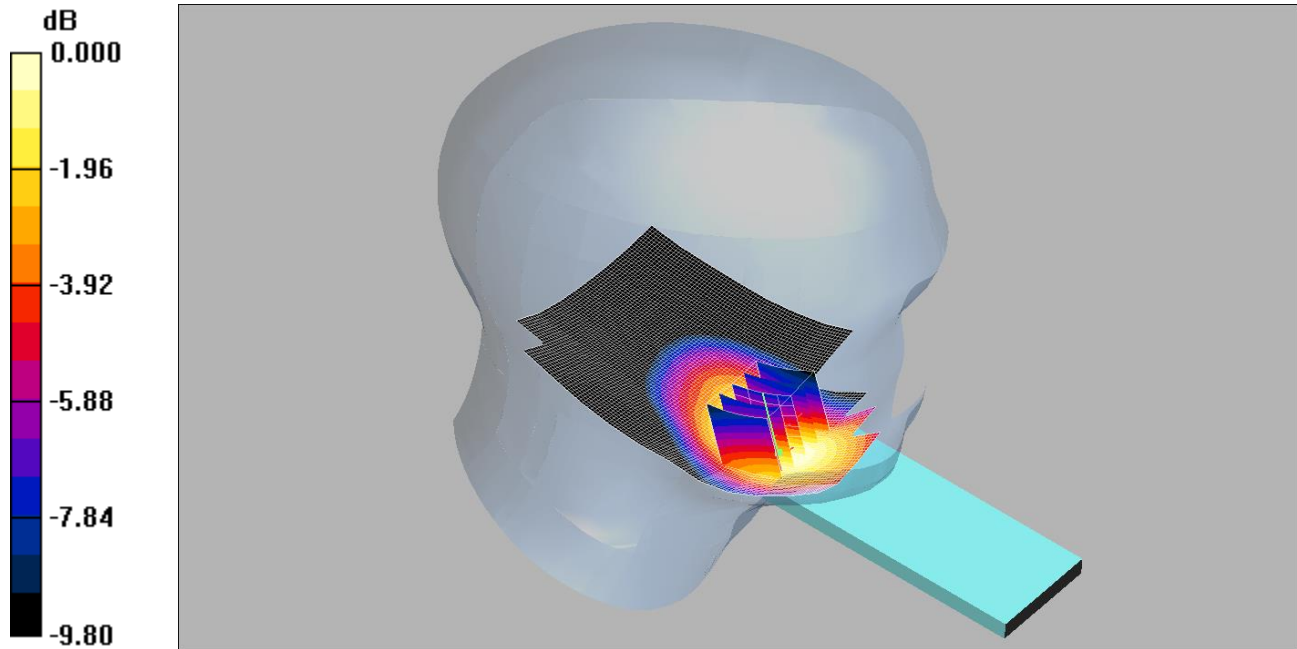
This appendix contains following SAR distribution scans:

Scan Reference Number	Title
001	Touch Left UMTS FDD 5 CH4183
002	Tilt Left UMTS FDD 5 CH4183
003	Touch Right UMTS FDD 5 CH4183
004	Tilt Right UMTS FDD 5 CH4183
005	Front of EUT Open Facing Phantom UMTS-FDD 5 CH4183
006	Front of EUT Closed Facing Phantom UMTS-FDD 5 CH4183
007	Back of EUT Open Facing Phantom UMTS-FDD 5 CH4183
008	Back of EUT Closed Facing Phantom UMTS-FDD 5 CH4183
009	Back of EUT Open Facing Phantom UMTS-FDD 5 CH4132
010	Back of EUT Closed Facing Phantom UMTS-FDD 5 CH4132
011	Back of EUT Open Facing Phantom UMTS-FDD 5 CH4233
012	Back of EUT Closed Facing Phantom UMTS-FDD 5 CH4233
013	System Performance Check 900MHz Head 20 08 14
014	System Performance Check 900MHz Body 20 08 14

001: Touch Left UMTS FDD 5 CH4183

Date: 20/08/2014

DUT: NTT docomo, P-01G; Type: Mobile Handset; FCC ID: UCE114061A



0 dB = 0.610mW/g

Communication System: UMTS-FDD 5; Frequency: 836.6 MHz; Duty Cycle: 1:1

Medium: 900 MHz HSL Medium parameters used (interpolated): $f = 836.6$ MHz; $\sigma = 0.91$ mho/m; $\epsilon_r = 41.4$; $\rho = 1000$ kg/m³

Phantom section: Left Section

DASY4 Configuration:

- Probe: ET3DV6 - SN1586; ConvF(6.54, 6.54, 6.54);
- Sensor-Surface: 4mm (Mechanical Surface Detection)
- Electronics: DAE3 Sn450; Calibrated: 22/01/2013
- Phantom: SAM 12b (Site 57); Type: SAM 4.0; Serial: TP:1031
- Measurement SW: DASY4, V4.7 Build 80; Postprocessing SW: SEMCAD, V1.8 Build 186

Touch Left - Middle/Area Scan (71x131x1): Measurement grid: dx=15mm, dy=15mm

Maximum value of SAR (interpolated) = 0.628 mW/g

Touch Left - Middle/Zoom Scan (5x5x7) (5x5x7)/Cube 0: Measurement grid: dx=8mm, dy=8mm, dz=5mm

Reference Value = 6.79 V/m; Power Drift = 0.200 dB

Peak SAR (extrapolated) = 0.765 W/kg

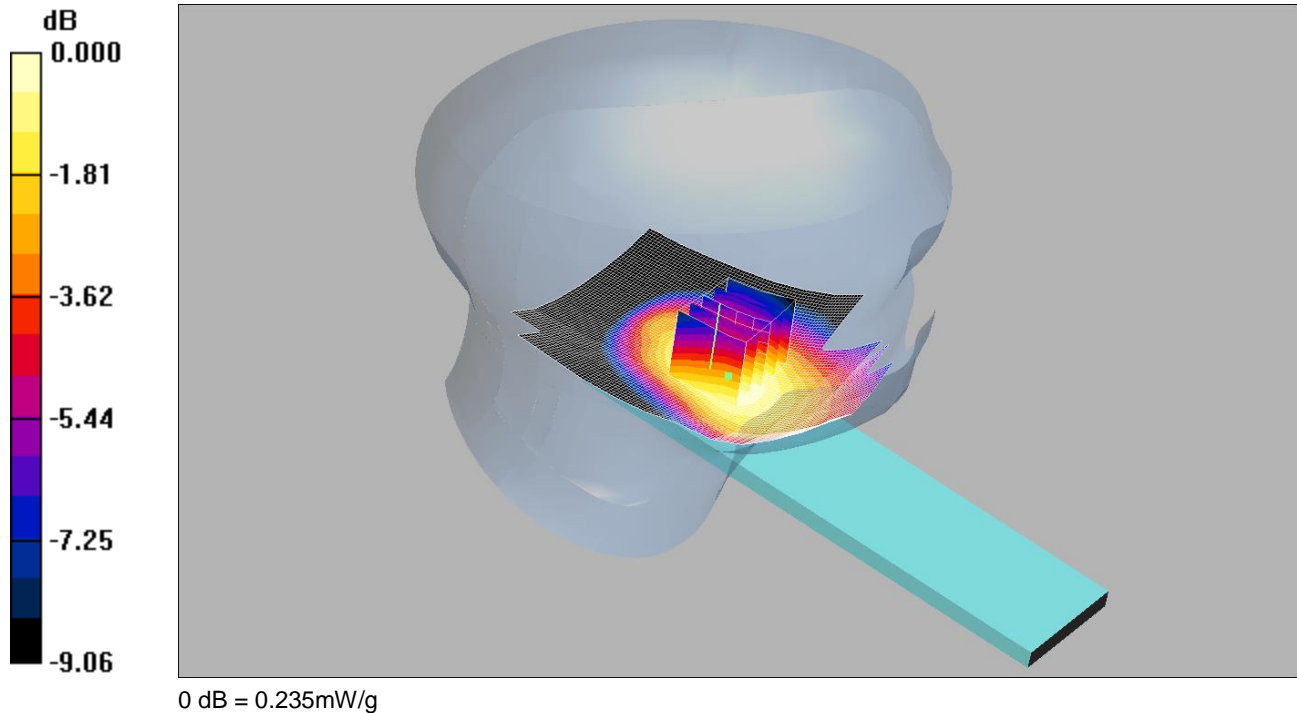
SAR(1 g) = 0.572 mW/g; SAR(10 g) = 0.397 mW/g

Maximum value of SAR (measured) = 0.610 mW/g

002: Tilt Left UMTS FDD 5 CH4183

Date: 20/08/2014

DUT: NTT docomo, P-01G; Type: Mobile Handset; FCC ID: UCE114061A



Communication System: UMTS-FDD 5; Frequency: 836.6 MHz; Duty Cycle: 1:1

Medium: 900 MHz HSL Medium parameters used (interpolated): $f = 836.6$ MHz; $\sigma = 0.91$ mho/m; $\epsilon_r = 41.4$; $\rho = 1000$ kg/m³

Phantom section: Left Section

DASY4 Configuration:

- Probe: ET3DV6 - SN1586; ConvF(6.54, 6.54, 6.54);
- Sensor-Surface: 4mm (Mechanical Surface Detection)
- Electronics: DAE3 Sn450; Calibrated: 22/01/2013
- Phantom: SAM 12b (Site 57); Type: SAM 4.0; Serial: TP:1031
- Measurement SW: DASY4, V4.7 Build 80; Postprocessing SW: SEMCAD, V1.8 Build 186

Tilt Left - Middle/Area Scan (71x131x1): Measurement grid: dx=15mm, dy=15mm

Maximum value of SAR (interpolated) = 0.238 mW/g

Tilt Left - Middle/Zoom Scan (5x5x7) (5x5x7)/Cube 0: Measurement grid: dx=8mm, dy=8mm, dz=5mm

Reference Value = 11.0 V/m; Power Drift = -0.059 dB

Peak SAR (extrapolated) = 0.273 W/kg

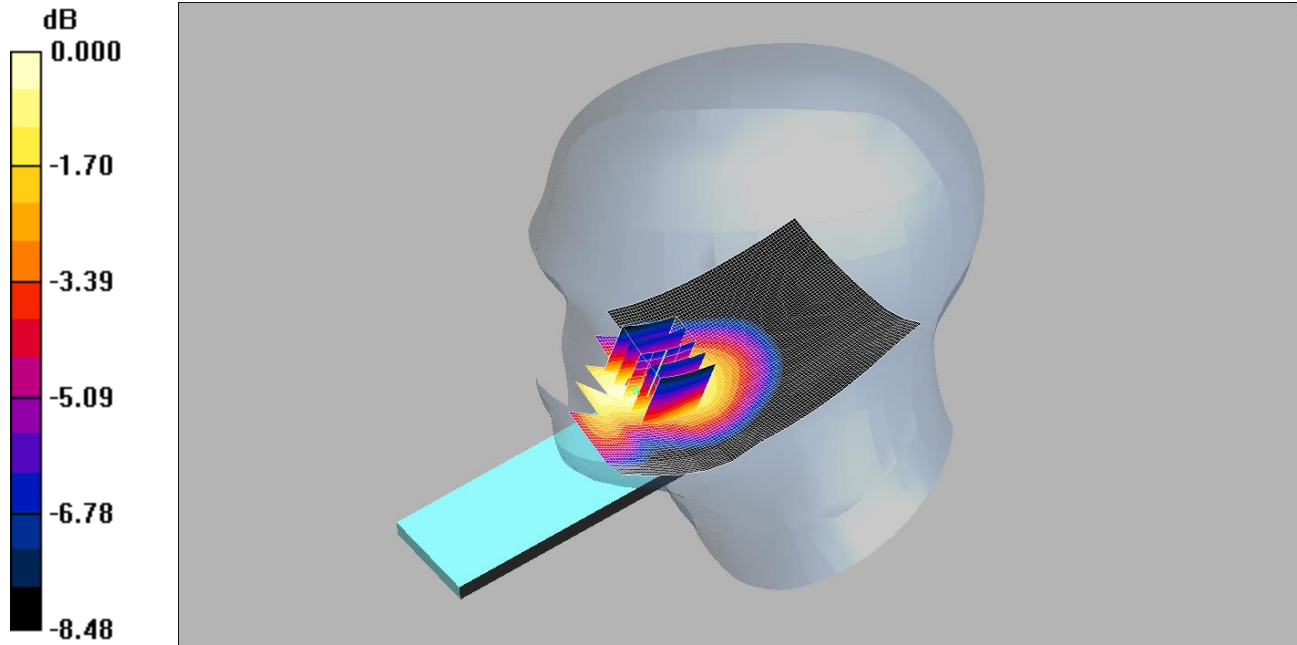
SAR(1 g) = 0.225 mW/g; SAR(10 g) = 0.174 mW/g

Maximum value of SAR (measured) = 0.235 mW/g

003: Touch Right UMTS FDD 5 CH4183

Date: 20/08/2014

DUT: NTT docomo, P-01G; Type: Mobile Handset; FCC ID: UCE114061A



0 dB = 0.480mW/g

Communication System: UMTS-FDD 5; Frequency: 836.6 MHz; Duty Cycle: 1:1

Medium: 900 MHz HSL Medium parameters used (interpolated): $f = 836.6$ MHz; $\sigma = 0.91$ mho/m; $\epsilon_r = 41.4$; $\rho = 1000$ kg/m³

Phantom section: Right Section

DASY4 Configuration:

- Probe: ET3DV6 - SN1586; ConvF(6.54, 6.54, 6.54);
- Sensor-Surface: 4mm (Mechanical Surface Detection)
- Electronics: DAE3 Sn450; Calibrated: 22/01/2013
- Phantom: SAM 12b (Site 57); Type: SAM 4.0; Serial: TP:1031
- Measurement SW: DASY4, V4.7 Build 80; Postprocessing SW: SEMCAD, V1.8 Build 186

Touch Right - Middle/Area Scan (71x131x1): Measurement grid: dx=15mm, dy=15mm

Maximum value of SAR (interpolated) = 0.474 mW/g

Touch Right - Middle/Zoom Scan (5x5x7) 2 (5x5x7)/Cube 0: Measurement grid: dx=8mm, dy=8mm, dz=5mm

Reference Value = 6.59 V/m; Power Drift = -0.024 dB

Peak SAR (extrapolated) = 0.587 W/kg

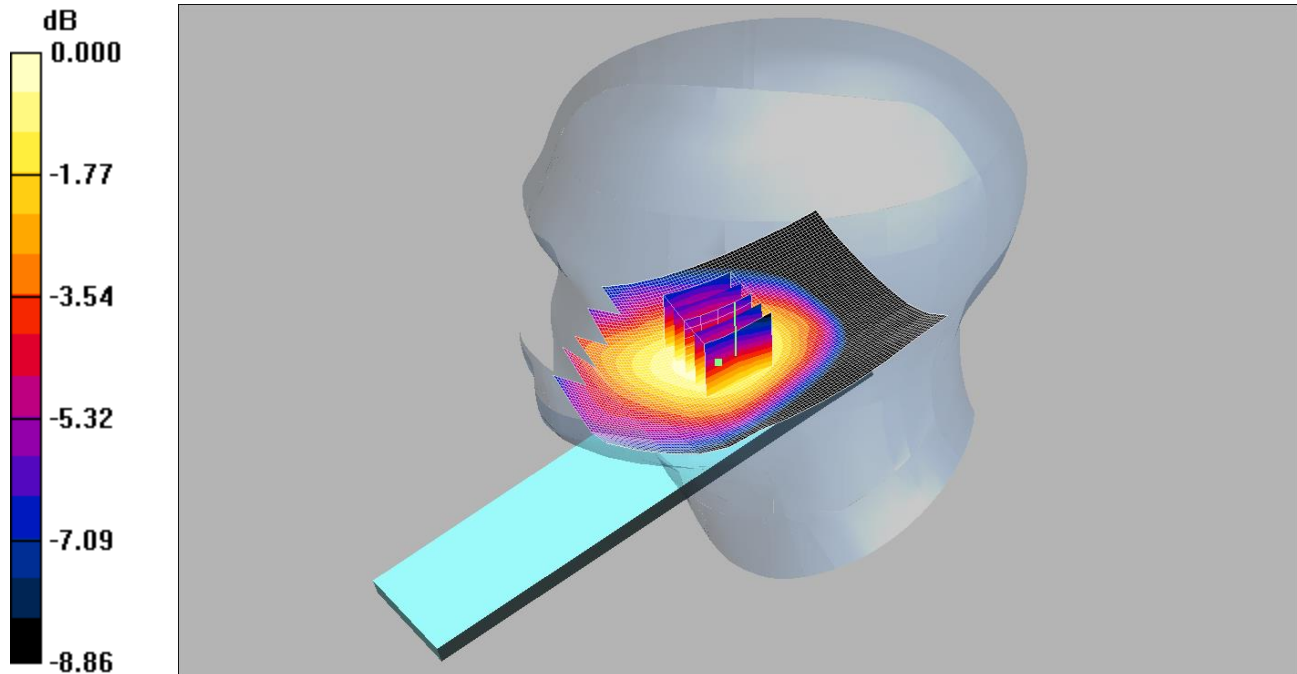
SAR(1 g) = 0.455 mW/g; SAR(10 g) = 0.327 mW/g

Maximum value of SAR (measured) = 0.480 mW/g

004: Tilt Right UMTS FDD 5 CH4183

Date: 20/08/2014

DUT: NTT docomo, P-01G; Type: Mobile Handset; FCC ID: UCE114061A



0 dB = 0.228mW/g

Communication System: UMTS-FDD 5; Frequency: 836.6 MHz; Duty Cycle: 1:1

Medium: 900 MHz HSL Medium parameters used (interpolated): $f = 836.6$ MHz; $\sigma = 0.91$ mho/m; $\epsilon_r = 41.4$; $\rho = 1000$ kg/m³

Phantom section: Right Section

DASY4 Configuration:

- Probe: ET3DV6 - SN1586; ConvF(6.54, 6.54, 6.54);
- Sensor-Surface: 4mm (Mechanical Surface Detection)
- Electronics: DAE3 Sn450; Calibrated: 22/01/2013
- Phantom: SAM 12b (Site 57); Type: SAM 4.0; Serial: TP:1031
- Measurement SW: DASY4, V4.7 Build 80; Postprocessing SW: SEMCAD, V1.8 Build 186

Tilt Right - Middle/Area Scan (71x131x1): Measurement grid: dx=15mm, dy=15mm

Maximum value of SAR (interpolated) = 0.230 mW/g

Tilt Right - Middle/Zoom Scan (5x5x7) (5x5x7)/Cube 0: Measurement grid: dx=8mm, dy=8mm, dz=5mm

Reference Value = 10.3 V/m; Power Drift = 0.081 dB

Peak SAR (extrapolated) = 0.261 W/kg

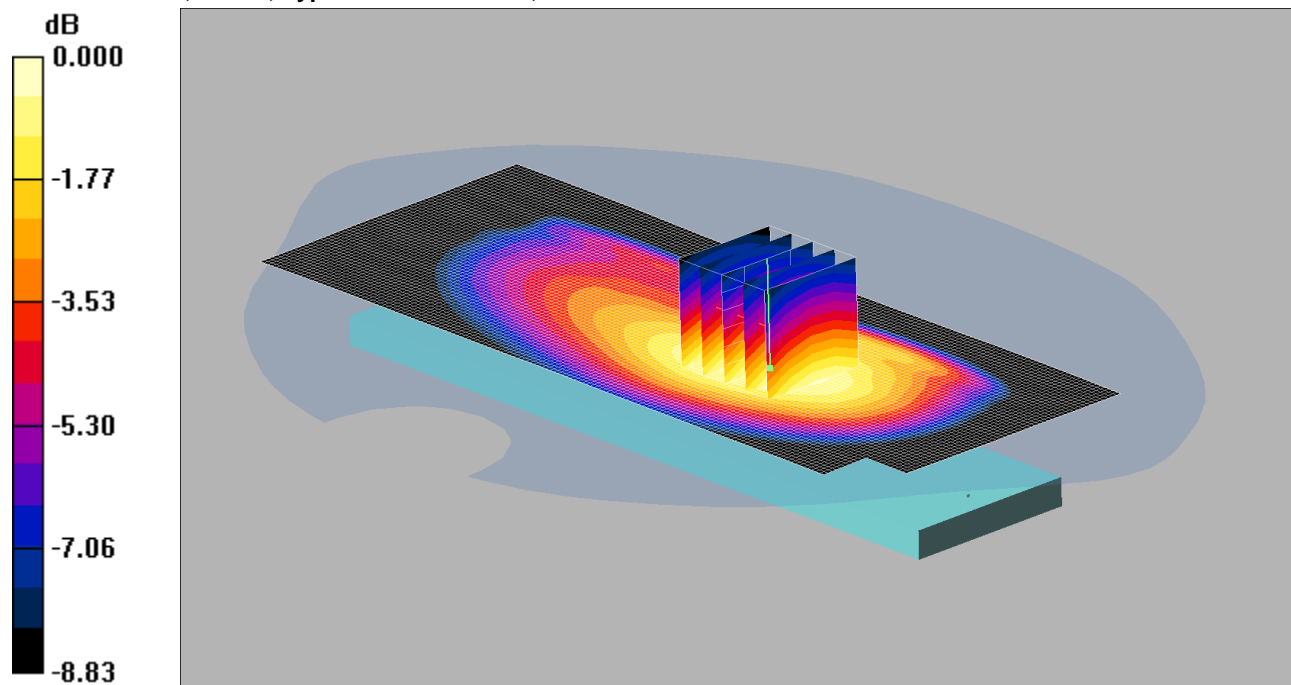
SAR(1 g) = 0.216 mW/g; SAR(10 g) = 0.165 mW/g

Maximum value of SAR (measured) = 0.228 mW/g

005: Front of EUT Open Facing Phantom UMTS-FDD 5 CH4183

Date: 20/08/2014

DUT: NTT docomo, P-01G; Type: Mobile Handset; FCC ID: UCE114061A



0 dB = 0.403mW/g

Communication System: UMTS-FDD 5; Frequency: 836.6 MHz; Duty Cycle: 1:1

Medium: 900 MHz MSL Medium parameters used (interpolated): $f = 836.6$ MHz; $\sigma = 0.965$ mho/m; $\epsilon_r = 55.2$; $\rho = 1000$ kg/m³

Phantom section: Flat Section

DASY4 Configuration:

- Probe: ET3DV6 - SN1529; ConvF(6, 6, 6);
- Sensor-Surface: 4mm (Mechanical Surface Detection)
- Electronics: DAE3 Sn394; Calibrated: 16/05/2014
- Phantom: SAM 12a (Site 56); Type: SAM 4.0; Serial: TP:1020
- Measurement SW: DASY4, V4.6 Build 19; Postprocessing SW: SEMCAD, V1.8 Build 159

Front of EUT Facing Phantom - Mid 2/Area Scan 2 (61x151x1): Measurement grid: dx=15mm, dy=15mm

Maximum value of SAR (interpolated) = 0.389 mW/g

Front of EUT Facing Phantom - Mid 2/Zoom Scan (5x5x7) 2 2 2 2 (5x5x7)/Cube 0: Measurement grid: dx=8mm, dy=8mm, dz=5mm

Reference Value = 15.5 V/m; Power Drift = -0.031 dB

Peak SAR (extrapolated) = 0.484 W/kg

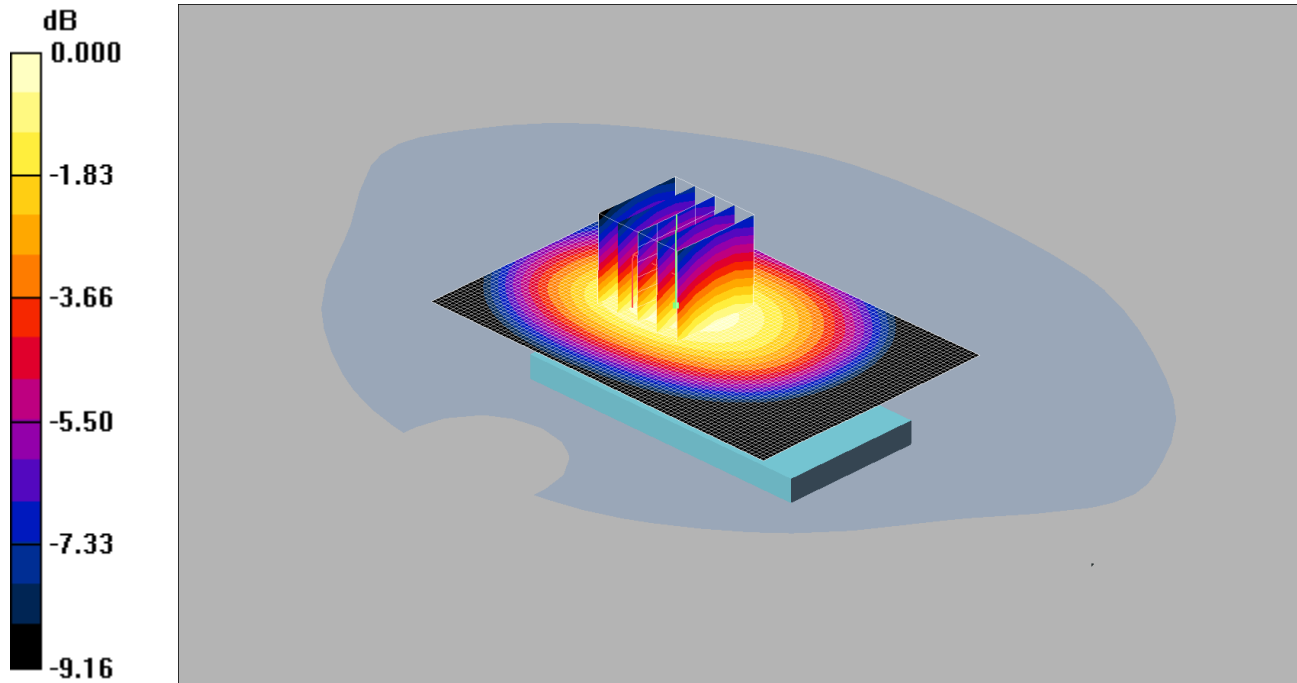
SAR(1 g) = 0.379 mW/g; SAR(10 g) = 0.275 mW/g

Maximum value of SAR (measured) = 0.403 mW/g

006: Front of EUT Closed Facing Phantom UMTS-FDD 5 CH4183

Date: 20/08/2014

DUT: NTT docomo, P-01G; Type: Mobile Handset; FCC ID: UCE114061A



0 dB = 0.318mW/g

Communication System: UMTS-FDD 5; Frequency: 836.6 MHz; Duty Cycle: 1:1

Medium: 900 MHz MSL Medium parameters used (interpolated): $f = 836.6$ MHz; $\sigma = 0.965$ mho/m; $\epsilon_r = 55.2$; $\rho = 1000$ kg/m³

Phantom section: Flat Section

DASY4 Configuration:

- Probe: ET3DV6 - SN1529; ConvF(6, 6, 6);
- Sensor-Surface: 4mm (Mechanical Surface Detection)
- Electronics: DAE3 Sn394; Calibrated: 16/05/2014
- Phantom: SAM 12a (Site 56); Type: SAM 4.0; Serial: TP:1020
- Measurement SW: DASY4, V4.6 Build 19; Postprocessing SW: SEMCAD, V1.8 Build 159

Front of EUT Facing Phantom - Mid 2/Area Scan 2 (61x91x1): Measurement grid: dx=15mm, dy=15mm

Maximum value of SAR (interpolated) = 0.316 mW/g

Front of EUT Facing Phantom - Mid 2/Zoom Scan (5x5x7) 2 2 2 2 (5x5x7)/Cube 0: Measurement grid: dx=8mm, dy=8mm, dz=5mm

Reference Value = 17.8 V/m; Power Drift = 0.022 dB

Peak SAR (extrapolated) = 0.385 W/kg

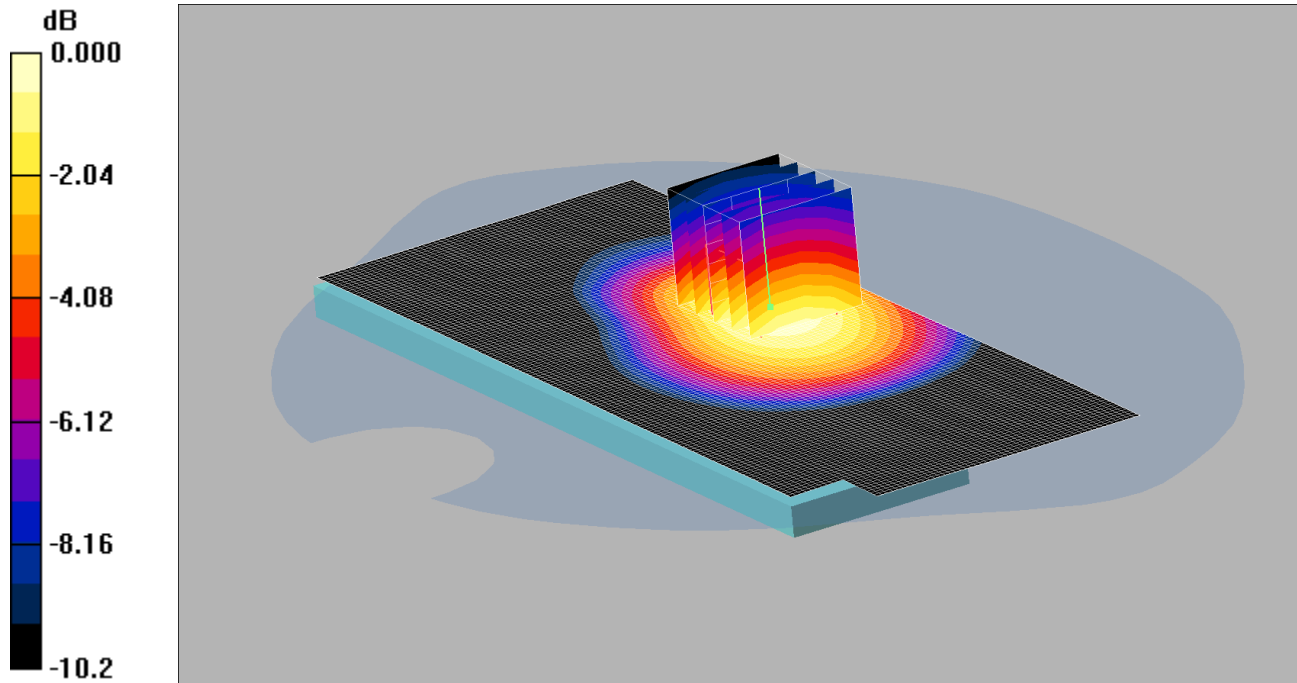
SAR(1 g) = 0.301 mW/g; SAR(10 g) = 0.223 mW/g

Maximum value of SAR (measured) = 0.318 mW/g

007: Back of EUT Open Facing Phantom UMTS-FDD 5 CH4183

Date: 20/08/2014

DUT: NTT docomo, P-01G; Type: Mobile Handset; FCC ID: UCE114061A



0 dB = 0.693mW/g

Communication System: UMTS-FDD 5; Frequency: 836.6 MHz; Duty Cycle: 1:1

Medium: 900 MHz MSL Medium parameters used (interpolated): $f = 836.6$ MHz; $\sigma = 0.965$ mho/m; $\epsilon_r = 55.2$; $\rho = 1000$ kg/m³

Phantom section: Flat Section

DASY4 Configuration:

- Probe: ET3DV6 - SN1529; ConvF(6, 6, 6);
- Sensor-Surface: 4mm (Mechanical Surface Detection)
- Electronics: DAE3 Sn394; Calibrated: 16/05/2014
- Phantom: SAM 12a (Site 56); Type: SAM 4.0; Serial: TP:1020
- Measurement SW: DASY4, V4.6 Build 19; Postprocessing SW: SEMCAD, V1.8 Build 159

Back of EUT Facing Phantom - Mid 2/Area Scan 2 (61x151x1): Measurement grid: dx=15mm, dy=15mm

Maximum value of SAR (interpolated) = 0.703 mW/g

Back of EUT Facing Phantom - Mid 2/Zoom Scan (5x5x7) 2 2 2 2 (5x5x7)/Cube 0: Measurement grid: dx=8mm, dy=8mm, dz=5mm

Reference Value = 23.8 V/m; Power Drift = 0.044 dB

Peak SAR (extrapolated) = 0.869 W/kg

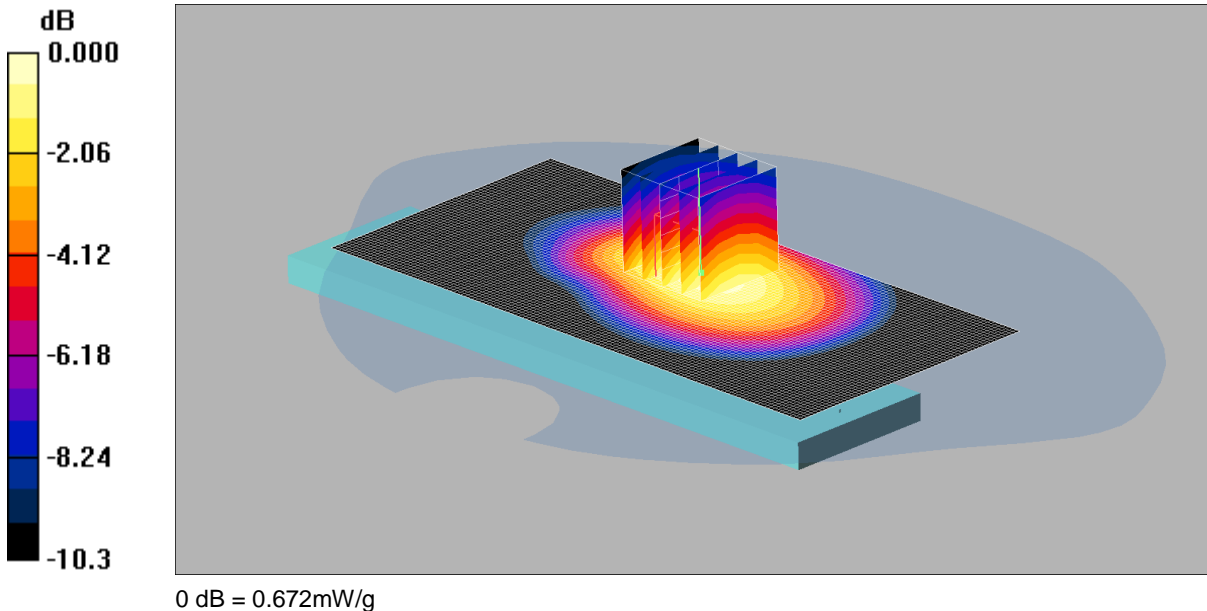
SAR(1 g) = 0.652 mW/g; SAR(10 g) = 0.461 mW/g

Maximum value of SAR (measured) = 0.693 mW/g

008: Back of EUT Open Facing Phantom UMTS-FDD 5 CH4132

Date: 21/08/2014

DUT: NTT docomo, P-01G; Type: Mobile Handset; FCC ID: UCE114061A



Communication System: UMTS-FDD 5; Frequency: 826.4 MHz; Duty Cycle: 1:1

Medium: 900 MHz MSL Medium parameters used (interpolated): $f = 826.4$ MHz; $\sigma = 0.959$ mho/m; $\epsilon_r = 55.2$; $\rho = 1000$ kg/m³

Phantom section: Flat Section

DASY4 Configuration:

- Probe: ET3DV6 - SN1529; ConvF(6, 6, 6);
- Sensor-Surface: 4mm (Mechanical Surface Detection)
- Electronics: DAE3 Sn394; Calibrated: 16/05/2014
- Phantom: SAM 12a (Site 56); Type: SAM 4.0; Serial: TP:1020
- Measurement SW: DASY4, V4.6 Build 19; Postprocessing SW: SEMCAD, V1.8 Build 159

Back of EUT Facing Phantom - Low/Area Scan 2 (61x131x1): Measurement grid: dx=15mm, dy=15mm

Maximum value of SAR (interpolated) = 0.667 mW/g

Back of EUT Facing Phantom - Low/Zoom Scan (5x5x7) 2 2 2 2 (5x5x7)/Cube 0: Measurement grid: dx=8mm, dy=8mm, dz=5mm

Reference Value = 25.0 V/m; Power Drift = 0.028 dB

Peak SAR (extrapolated) = 0.842 W/kg

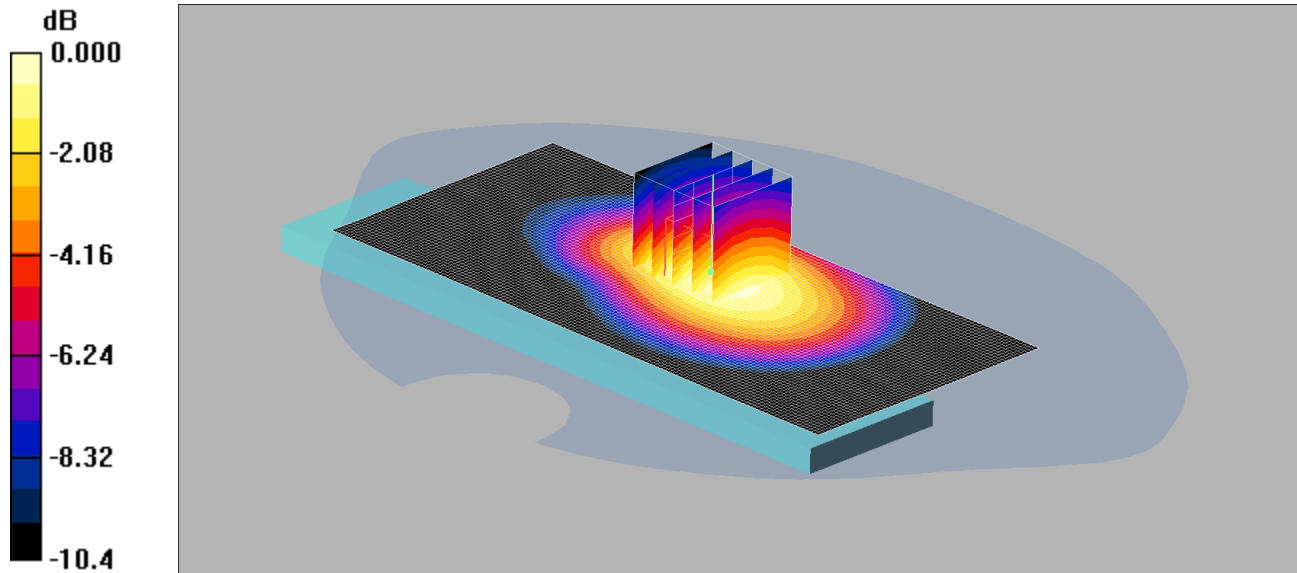
SAR(1 g) = 0.628 mW/g; SAR(10 g) = 0.441 mW/g

Maximum value of SAR (measured) = 0.672 mW/g

009: Back of EUT Open Facing Phantom UMTS-FDD 5 CH4233

Date: 21/08/2014

DUT: NTT docomo, P-01G; Type: Mobile Handset; FCC ID: UCE114061A



0 dB = 0.649mW/g

Communication System: UMTS-FDD 5; Frequency: 846.6 MHz; Duty Cycle: 1:1

Medium: 900 MHz MSL Medium parameters used (interpolated): $f = 846.6$ MHz; $\sigma = 0.971$ mho/m; $\epsilon_r = 55.2$; $\rho = 1000$ kg/m³

Phantom section: Flat Section

DASY4 Configuration:

- Probe: ET3DV6 - SN1529; ConvF(6, 6, 6);
- Sensor-Surface: 4mm (Mechanical Surface Detection)
- Electronics: DAE3 Sn394; Calibrated: 16/05/2014
- Phantom: SAM 12a (Site 56); Type: SAM 4.0; Serial: TP:1020
- Measurement SW: DASY4, V4.6 Build 19; Postprocessing SW: SEMCAD, V1.8 Build 159

Back of EUT Facing Phantom - High/Area Scan 2 (61x131x1): Measurement grid: dx=15mm, dy=15mm

Maximum value of SAR (interpolated) = 0.654 mW/g

Back of EUT Facing Phantom - High/Zoom Scan (5x5x7) 2 2 2 2 (5x5x7)/Cube 0: Measurement grid: dx=8mm, dy=8mm, dz=5mm

Reference Value = 24.8 V/m; Power Drift = 0.024 dB

Peak SAR (extrapolated) = 0.821 W/kg

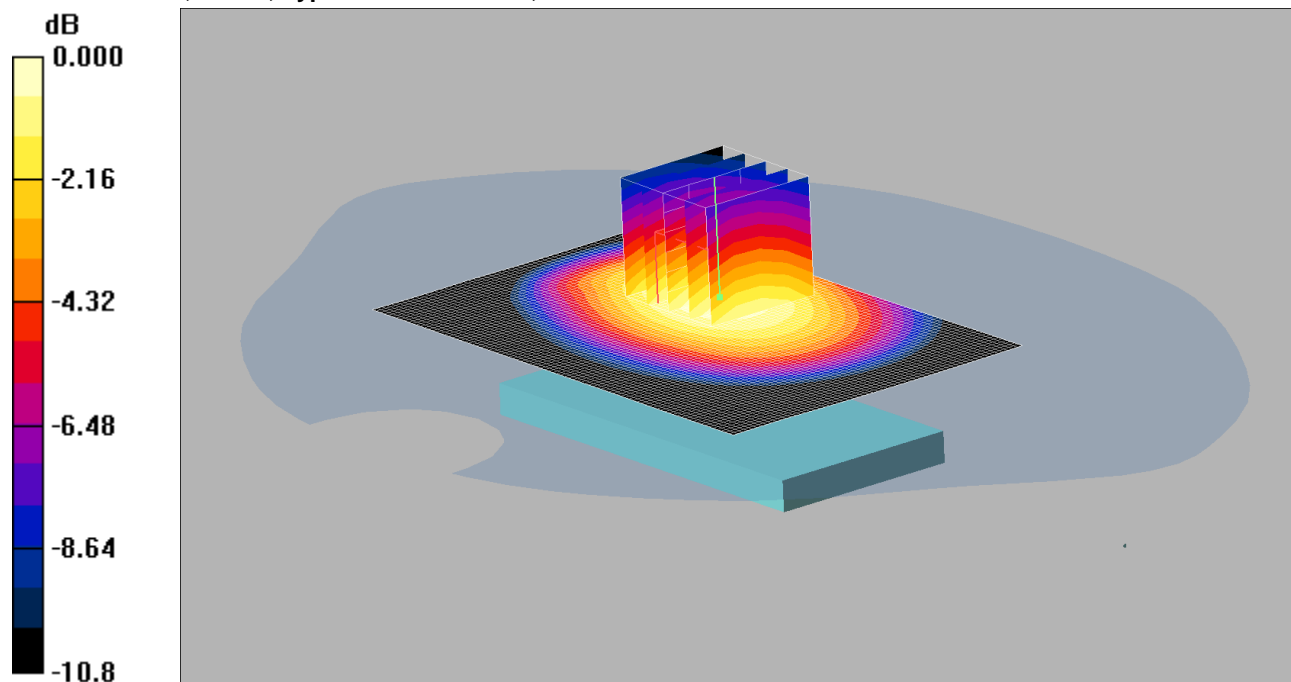
SAR(1 g) = 0.609 mW/g; SAR(10 g) = 0.431 mW/g

Maximum value of SAR (measured) = 0.649 mW/g

010: Back of EUT Closed Facing Phantom UMTS-FDD 5 CH4183

Date: 20/08/2014

DUT: NTT docomo, P-01G; Type: Mobile Handset; FCC ID: UCE114061A



0 dB = 0.660mW/g

Communication System: UMTS-FDD 5; Frequency: 836.6 MHz; Duty Cycle: 1:1

Medium: 900 MHz MSL Medium parameters used (interpolated): $f = 836.6$ MHz; $\sigma = 0.965$ mho/m; $\epsilon_r = 55.2$; $\rho = 1000$ kg/m³

Phantom section: Flat Section

DASY4 Configuration:

- Probe: ET3DV6 - SN1529; ConvF(6, 6, 6);
- Sensor-Surface: 4mm (Mechanical Surface Detection)
- Electronics: DAE3 Sn394; Calibrated: 16/05/2014
- Phantom: SAM 12a (Site 56); Type: SAM 4.0; Serial: TP:1020
- Measurement SW: DASY4, V4.6 Build 19; Postprocessing SW: SEMCAD, V1.8 Build 159

Back of EUT Facing Phantom - Mid 2/Area Scan 2 (61x91x1): Measurement grid: dx=15mm, dy=15mm

Maximum value of SAR (interpolated) = 0.654 mW/g

Back of EUT Facing Phantom - Mid 2/Zoom Scan (5x5x7) 2 2 2 2 (5x5x7)/Cube 0: Measurement grid: dx=8mm, dy=8mm, dz=5mm

Reference Value = 23.6 V/m; Power Drift = 0.034 dB

Peak SAR (extrapolated) = 0.823 W/kg

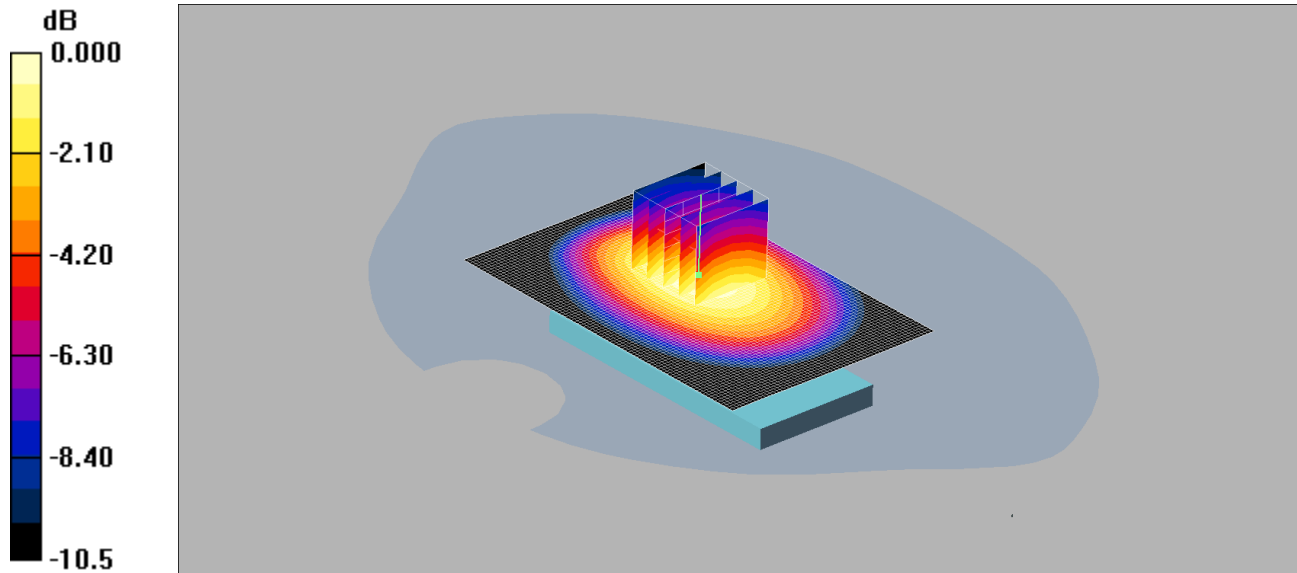
SAR(1 g) = 0.620 mW/g; SAR(10 g) = 0.443 mW/g

Maximum value of SAR (measured) = 0.660 mW/g

011: Back of EUT Closed Facing Phantom UMTS-FDD 5 CH4132

Date: 21/08/2014

DUT: NTT docomo, P-01G; Type: Mobile Handset; FCC ID: UCE114061A



0 dB = 0.713mW/g

Communication System: UMTS-FDD 5; Frequency: 826.4 MHz; Duty Cycle: 1:1

Medium: 900 MHz MSL Medium parameters used (interpolated): $f = 826.4$ MHz; $\sigma = 0.959$ mho/m; $\epsilon_r = 55.2$; $\rho = 1000$ kg/m³

Phantom section: Flat Section

DASY4 Configuration:

- Probe: ET3DV6 - SN1529; ConvF(6, 6, 6);
- Sensor-Surface: 4mm (Mechanical Surface Detection)
- Electronics: DAE3 Sn394; Calibrated: 16/05/2014
- Phantom: SAM 12a (Site 56); Type: SAM 4.0; Serial: TP:1020
- Measurement SW: DASY4, V4.6 Build 19; Postprocessing SW: SEMCAD, V1.8 Build 159

Back of EUT Facing Phantom - Low/Area Scan 2 (61x91x1): Measurement grid: dx=15mm, dy=15mm

Maximum value of SAR (interpolated) = 0.718 mW/g

Back of EUT Facing Phantom - Low/Zoom Scan (5x5x7) 2 2 2 2 (5x5x7)/Cube 0: Measurement grid: dx=8mm, dy=8mm, dz=5mm

Reference Value = 26.6 V/m; Power Drift = 0.003 dB

Peak SAR (extrapolated) = 0.879 W/kg

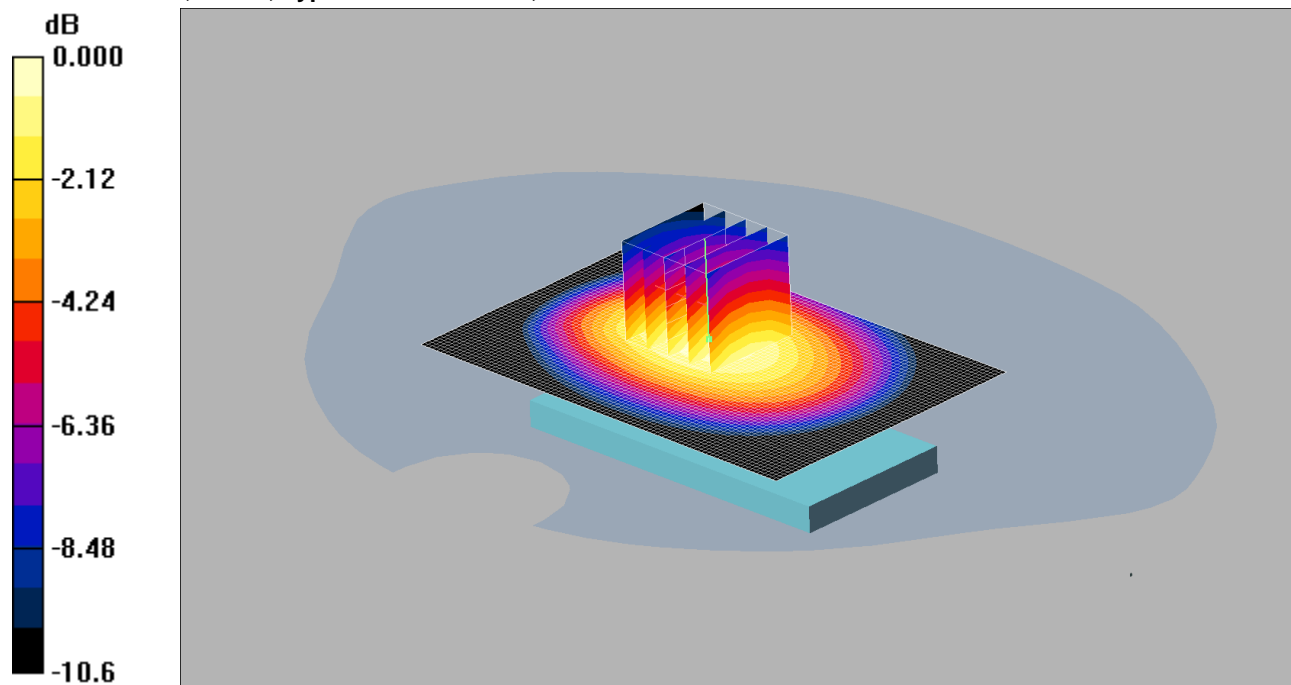
SAR(1 g) = 0.670 mW/g; SAR(10 g) = 0.479 mW/g

Maximum value of SAR (measured) = 0.713 mW/g

012: Back of EUT Closed Facing Phantom UMTS-FDD 5 CH4233

Date: 21/08/2014

DUT: NTT docomo, P-01G; Type: Mobile Handset; FCC ID: UCE114061A



0 dB = 0.895mW/g

Communication System: UMTS-FDD 5; Frequency: 846.6 MHz; Duty Cycle: 1:1

Medium: 900 MHz MSL Medium parameters used (interpolated): $f = 846.6$ MHz; $\sigma = 0.979$ mho/m; $\epsilon_r = 54.7$; $\rho = 1000$ kg/m³

Phantom section: Flat Section

DASY4 Configuration:

- Probe: ET3DV6 - SN1529; ConvF(6, 6, 6);
- Sensor-Surface: 4mm (Mechanical Surface Detection)
- Electronics: DAE3 Sn394; Calibrated: 16/05/2014
- Phantom: SAM 12a (Site 56); Type: SAM 4.0; Serial: TP:1020
- Measurement SW: DASY4, V4.6 Build 19; Postprocessing SW: SEMCAD, V1.8 Build 159

Back of EUT Facing Phantom - High/Area Scan 2 (61x91x1): Measurement grid: dx=15mm, dy=15mm

Maximum value of SAR (interpolated) = 0.878 mW/g

Back of EUT Facing Phantom - High/Zoom Scan (5x5x7) 2 2 2 2 (5x5x7)/Cube 0: Measurement grid: dx=8mm, dy=8mm, dz=5mm

Reference Value = 29.7 V/m; Power Drift = -0.016 dB

Peak SAR (extrapolated) = 1.10 W/kg

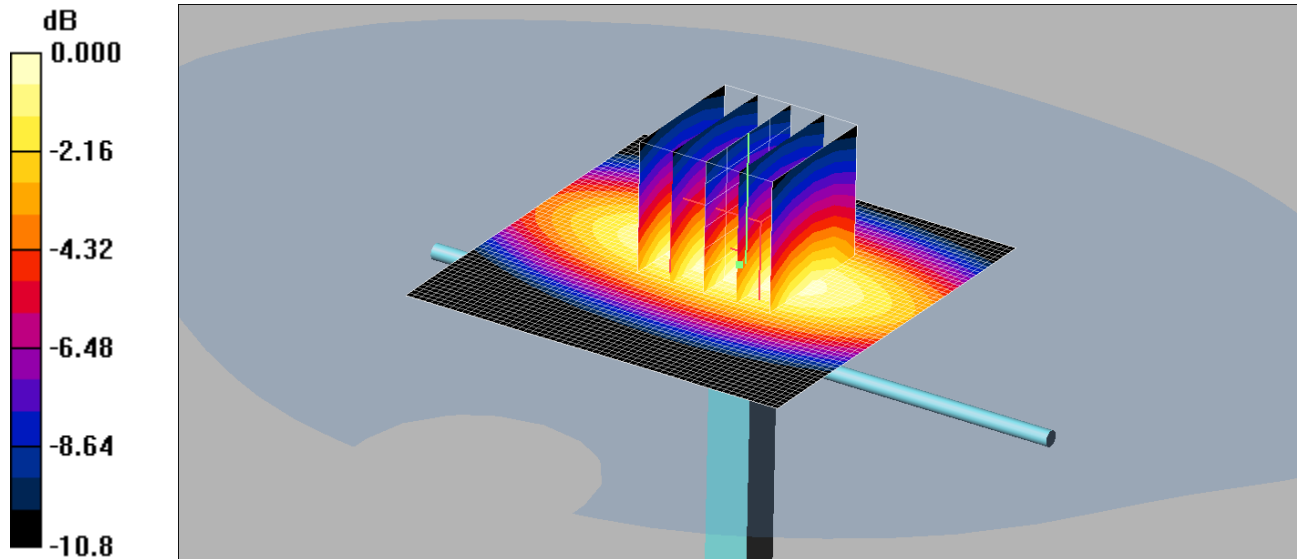
SAR(1 g) = 0.837 mW/g; SAR(10 g) = 0.598 mW/g

Maximum value of SAR (measured) = 0.895 mW/g

013: System Performance Check 900MHz Head 20 08 14

Date: 20/08/2014

DUT: Dipole 900 MHz; SN: 185; Type: D900V2; Serial: SN185



0 dB = 2.84mW/g

Communication System: CW; Frequency: 900 MHz; Duty Cycle: 1:1

Medium: 900 MHz HSL Medium parameters used: $f = 900$ MHz; $\sigma = 0.954$ mho/m; $\epsilon_r = 41$; $\rho = 1000$ kg/m³

Phantom section: Flat Section

DASY4 Configuration:

- Probe: ET3DV6 - SN1586; ConvF(6.34, 6.34, 6.34);
- Sensor-Surface: 4mm (Mechanical Surface Detection)
- Electronics: DAE3 Sn450; Calibrated: 31/10/2013
- Phantom: SAM 12b (Site 57); Type: SAM 4.0; Serial: TP:1031
- Measurement SW: DASY4, V4.7 Build 80; Postprocessing SW: SEMCAD, V1.8 Build 186

d=15mm, Pin=250mW/Area Scan (61x61x1): Measurement grid: dx=15mm, dy=15mm

Maximum value of SAR (interpolated) = 2.80 mW/g

d=15mm, Pin=250mW/Zoom Scan (5x5x7) (5x5x7)/Cube 0: Measurement grid: dx=8mm, dy=8mm, dz=5mm

Reference Value = 57.0 V/m; Power Drift = 0.009 dB

Peak SAR (extrapolated) = 3.72 W/kg

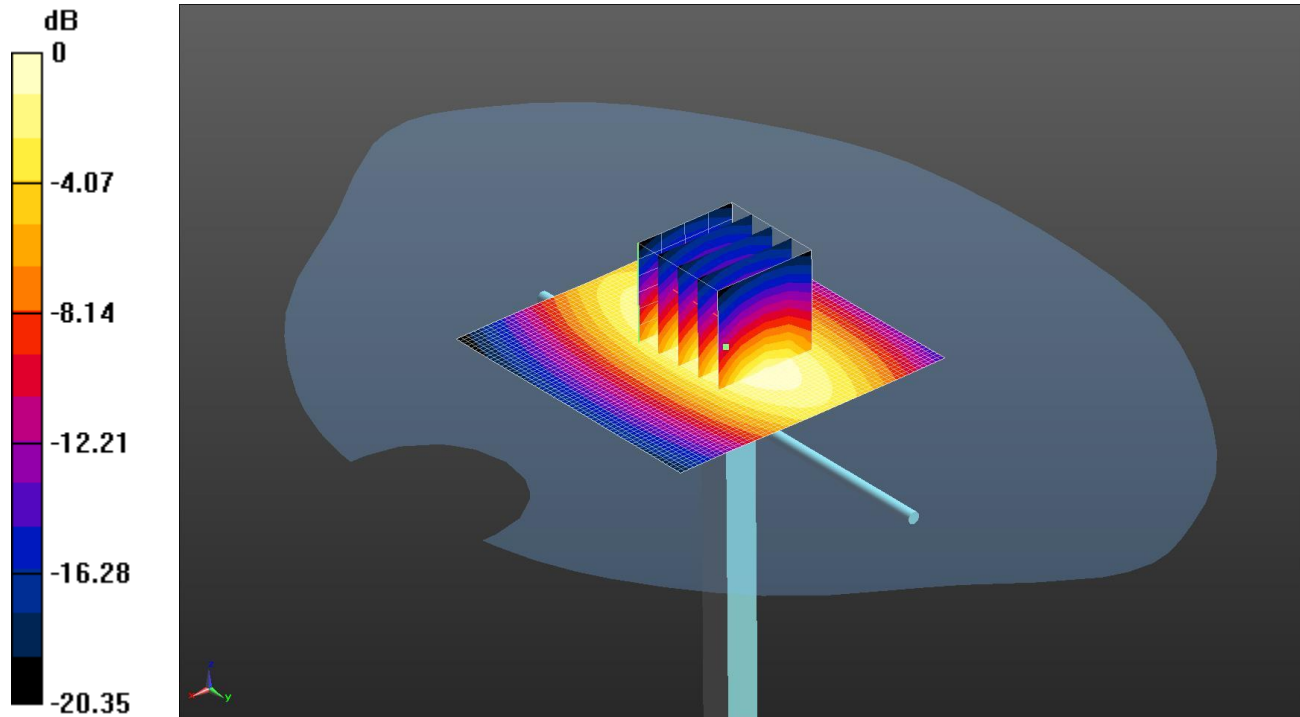
SAR(1 g) = 2.62 mW/g; SAR(10 g) = 1.71 mW/g

Maximum value of SAR (measured) = 2.84 mW/g

014: System Performance Check 900MHz Body 20 08 14

Date: 20/08/2014

DUT: Dipole 900 MHz; SN: 185; Type: D900V2; Serial: SN185



0 dB = 2.70 W/kg = 4.31 dBW/kg

Communication System: UID 0, CW; Frequency: 900 MHz; Duty Cycle: 1:1

Medium: 900 MHz MSL Medium parameters used: $f = 900$ MHz; $\sigma = 1.012$ S/m; $\epsilon_r = 54.427$; $\rho = 1000$ kg/m³

Phantom section: Flat Section

DASY4 Configuration:

- Probe: ET3DV6 - SN1529; ConvF(5.85, 5.85, 5.85); Calibrated: 22/05/2014;
- Sensor-Surface: 4mm (Mechanical Surface Detection)
- Electronics: DAE3 Sn394; Calibrated: 16/05/2014
- Phantom: SAM 12a (Site 56); Type: SAM 4.0; Serial: TP:1020
- ; SEMCAD X Version 14.6.10 (7164)

Configuration/d=15mm, Pin=250mW 2 2/Area Scan (61x61x1): Interpolated grid: dx=1.500 mm, dy=1.500 mm

Maximum value of SAR (interpolated) = 2.70 W/kg

Configuration/d=15mm, Pin=250mW 2 2/Zoom Scan (5x5x7) (5x5x7)/Cube 0: Measurement grid: dx=8mm, dy=8mm, dz=5mm

Reference Value = 54.213 V/m; Power Drift = 0.06 dB

Peak SAR (extrapolated) = 3.37 W/kg

SAR(1 g) = 2.48 W/kg; SAR(10 g) = 1.65 W/kg

Maximum value of SAR (measured) = 2.70 W/kg