

Appendix 4. Photographs

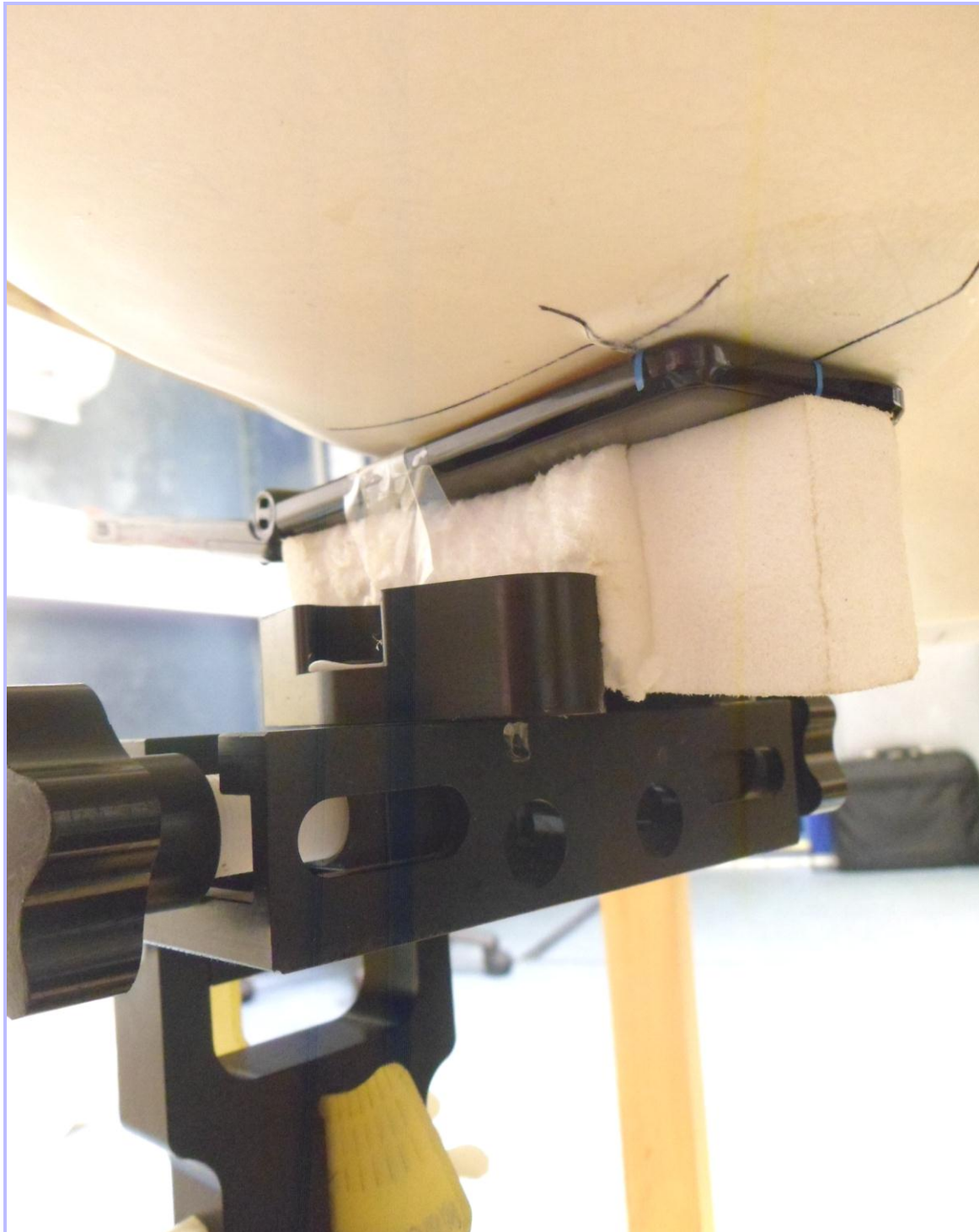
This appendix contains the following photographs:

Photo Reference Number	Title
PHT/10036246JD05/001	Test configuration for the measurement of Specific Absorption Rate (SAR)
PHT/10036246JD05/002	Touch Left
PHT/10036246JD05/003	Tilt Left
PHT/10036246JD05/004	Touch Right
PHT/10036246JD05/005	Tilt Right
PHT/10036246JD05/006	Front of EUT Open Facing Phantom
PHT/10036246JD05/007	Back of EUT Open Facing Phantom
PHT/10036246JD05/008	Front of EUT Closed Facing Phantom
PHT/10036246JD05/009	Back of EUT Closed Facing Phantom
PHT/10036246JD05/010	Front View of EUT Closed
PHT/10036246JD05/011	Back View of EUT Closed
PHT/10036246JD05/012	Front View of EUT Open
PHT/10036246JD05/013	Back View of EUT Open
PHT/10036246JD05/014	Internal View of Radiated EUT
PHT/10036246JD05/015	Internal View of Conducted EUT
PHT/10036246JD05/016	Personal Hands Free (PHF) Kit View
PHT/10036246JD05/017	Battery View
PHT/10036246JD05/018	900 Head Fluid Level
PHT/10036246JD05/019	900 Body Fluid Level

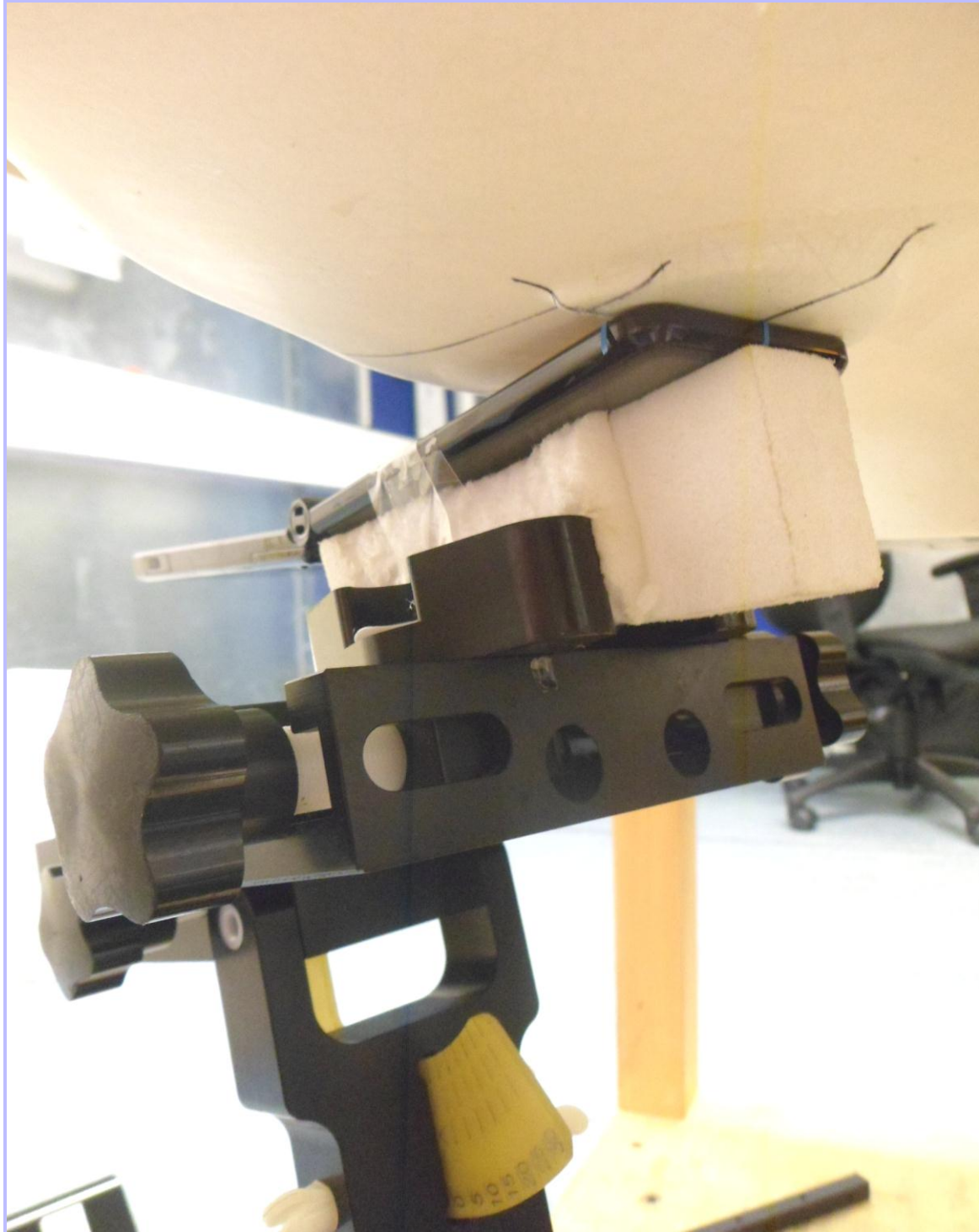
PHT/10036246JD05/001: Test configuration for the measurement of Specific Absorption Rate (SAR)



PHT/10036246JD05/002: Touch Left



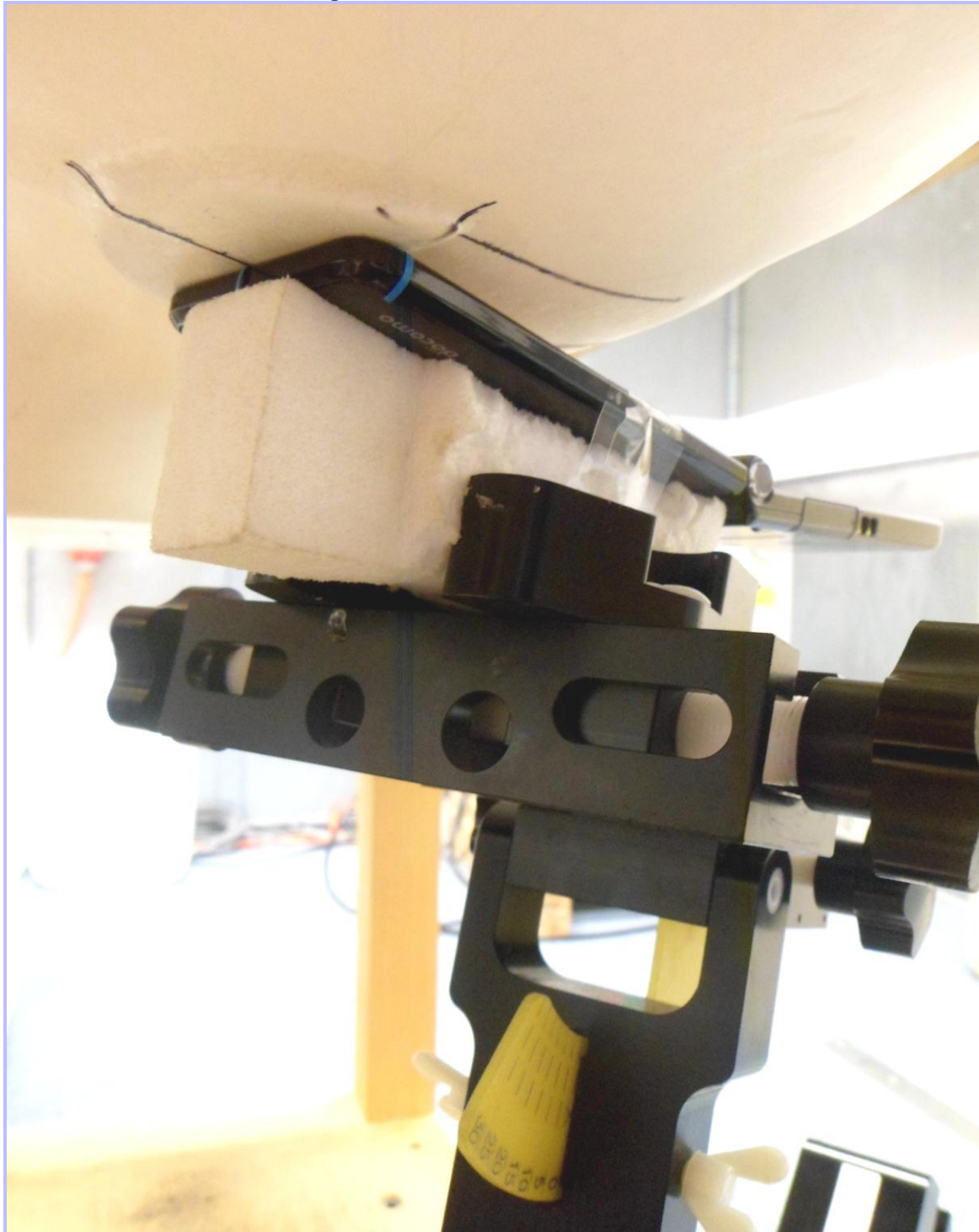
PHT/10036246JD05/003: Tilt Left



PHT/10036246JD05/004: Touch Right



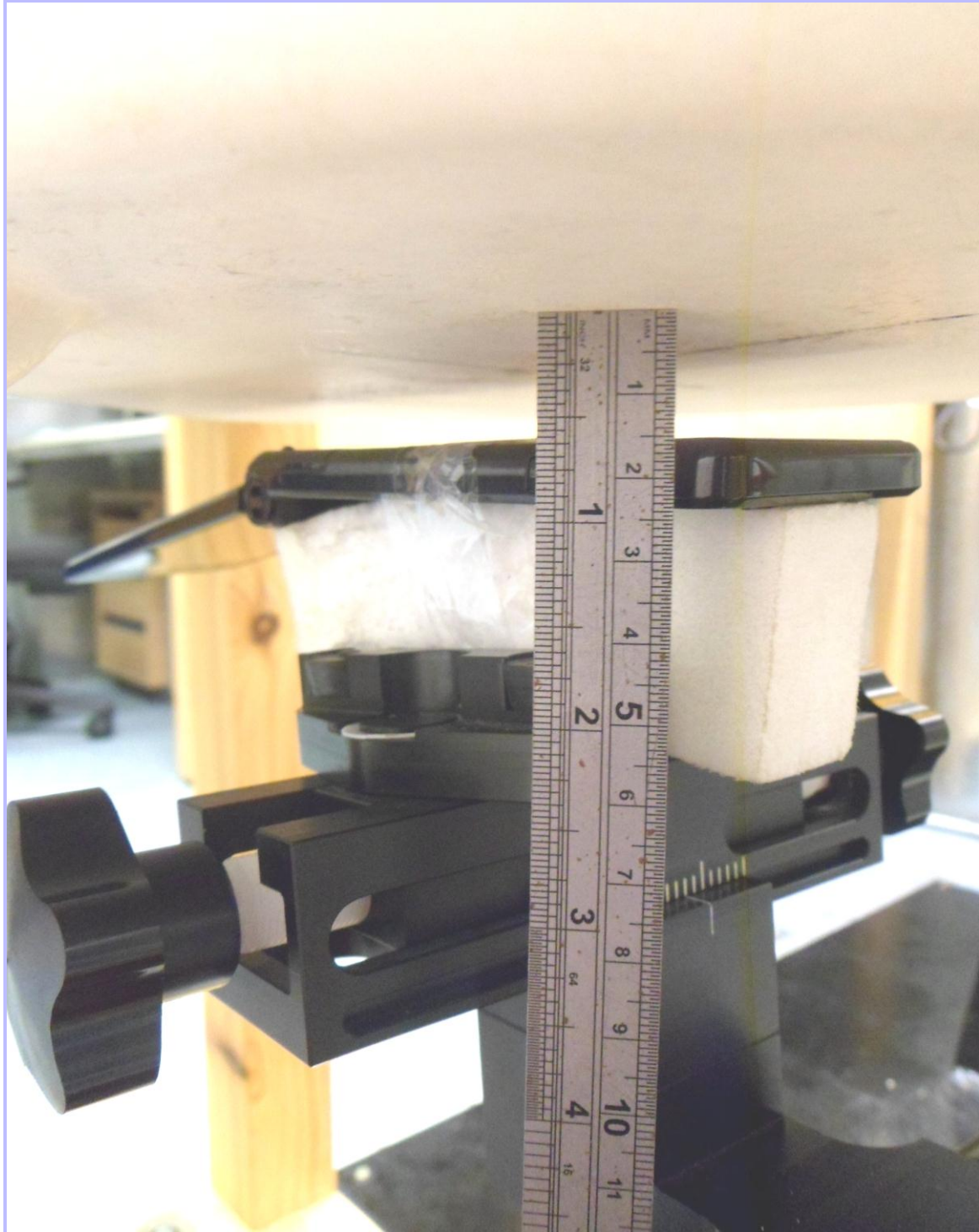
PHT/10036246JD05/005: Tilt Right



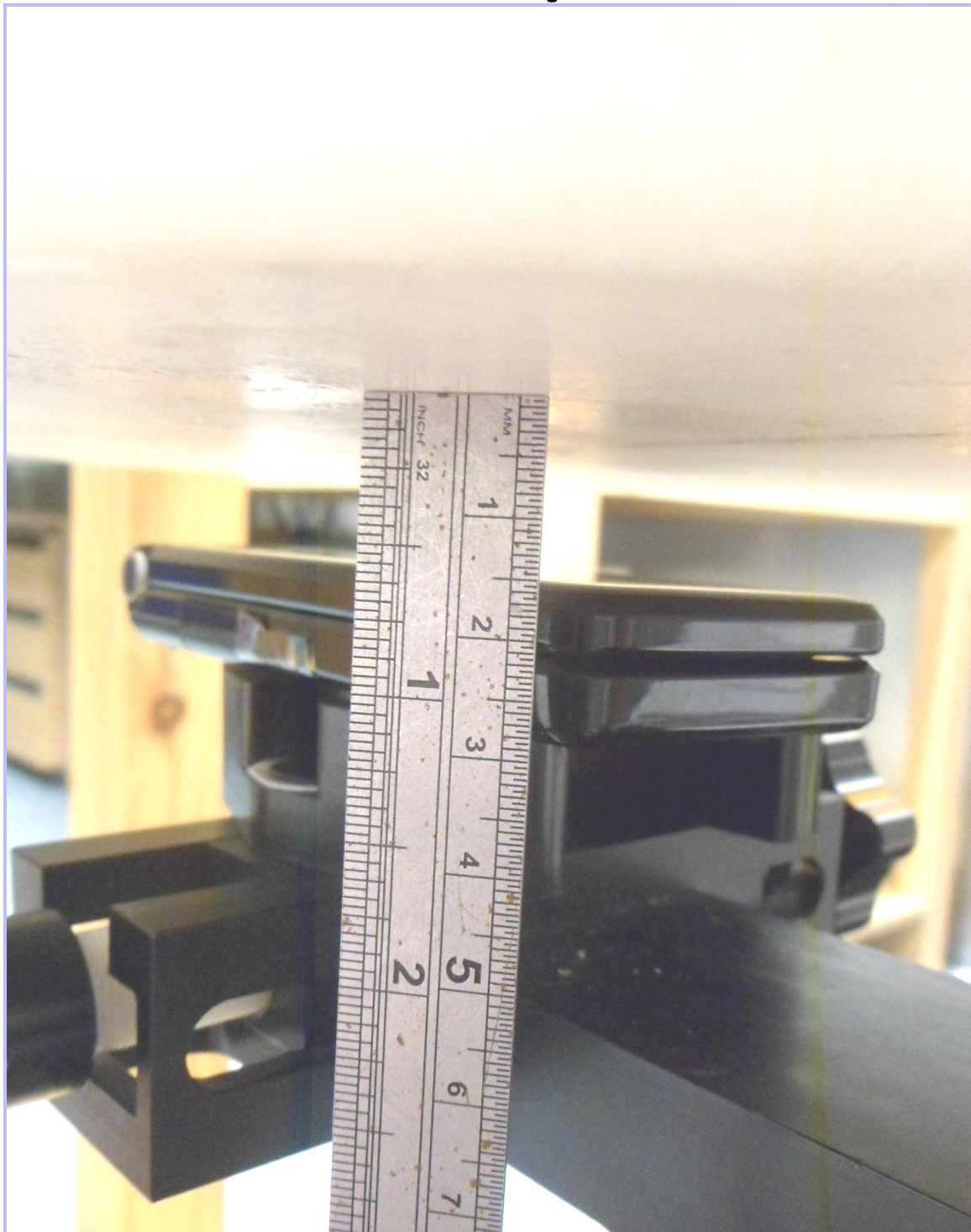
PHT/10036246JD05/006: Front of EUT Open Facing Phantom



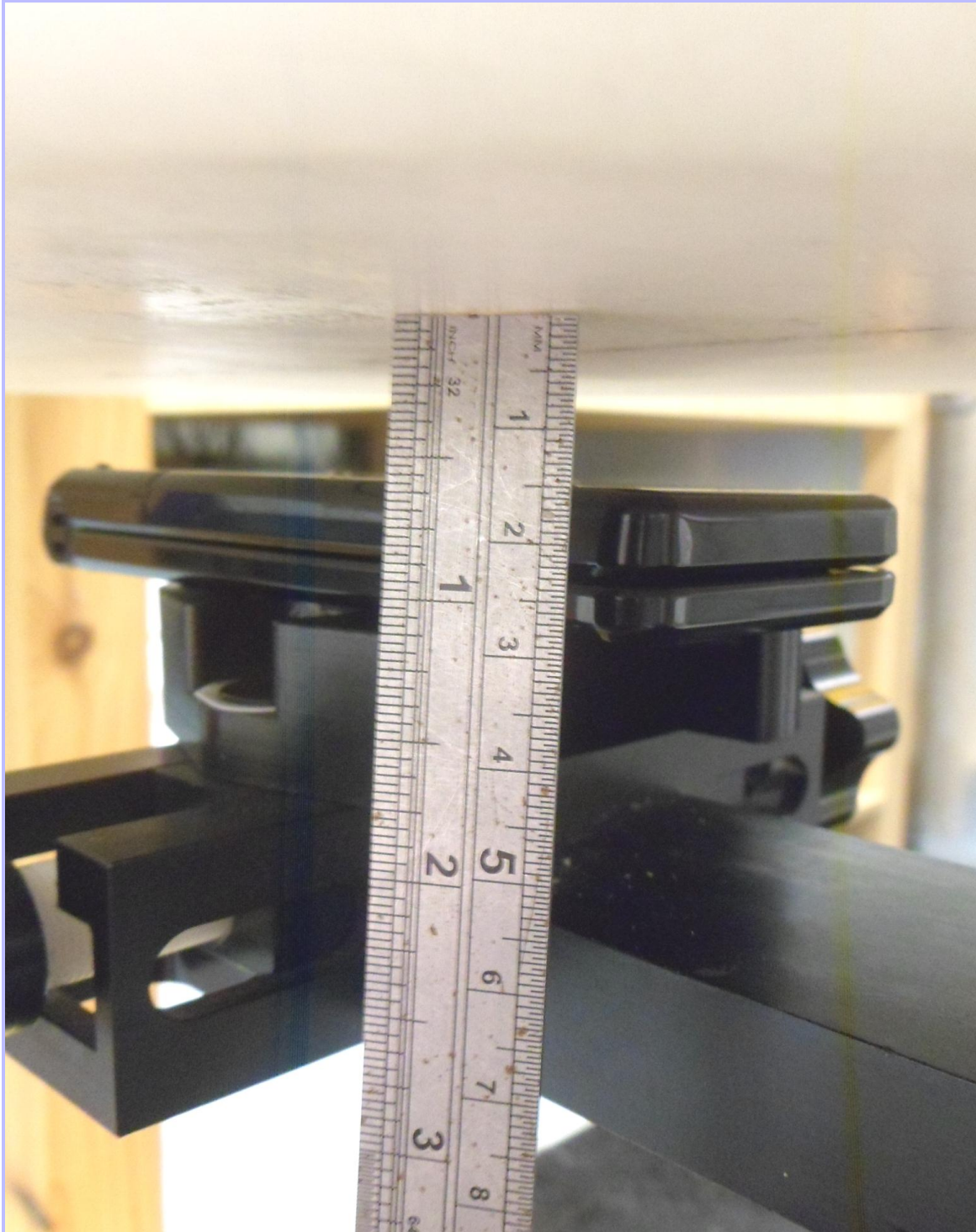
PHT/10036246JD05/007: Back of EUT Open Facing Phantom



PHT/10036246JD05/008: Front of EUT Closed Facing Phantom



PHT/10036246JD05/009: Back of EUT Closed Facing Phantom



PHT/10036246JD05/010: Front View of EUT Closed



PHT/10036246JD05/011: Back View of EUT Closed



PHT/10036246JD05/012: Front View of EUT Open



PHT/10036246JD05/013: Back View of EUT Open



PHT/10036246JD05/014: Internal View of Radiated EUT



PHT/10036246JD05/015: Internal View of Conducted EUT



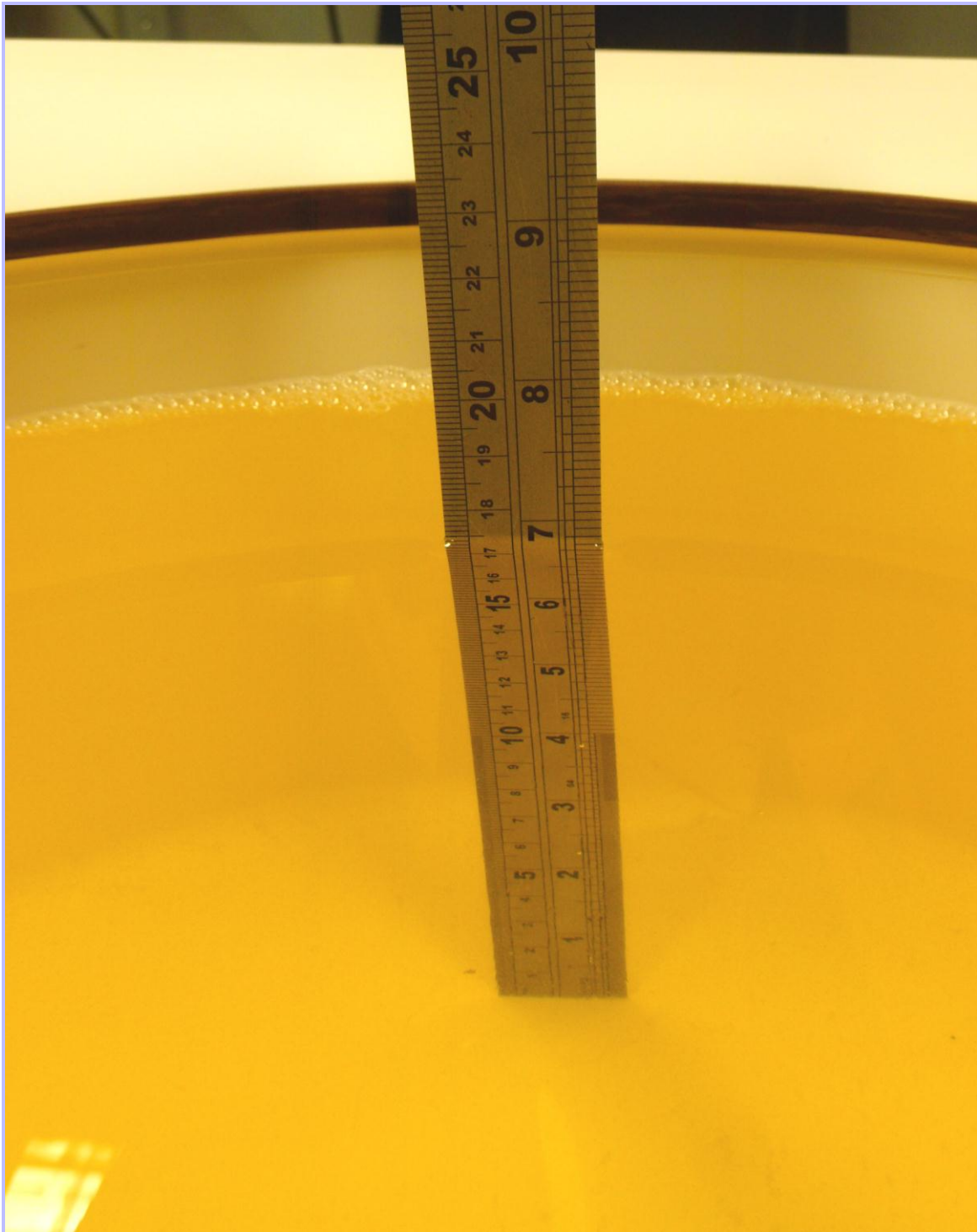
PHT/10036246JD05/016: Personal Hands Free (PHF) Kit View



PHT/10036246JD05/017: Battery View



PHT/10036246JD05/018: 900 Head Fluid Level



PHT/10036246JD05/019: 900 Body Fluid Level

