

Appendix 4. Photographs

This appendix contains the following photographs:

Photo Reference Number	Title
PHT/87983JD02A/001	Test configuration for the measurement of Specific Absorption Rate (SAR)
PHT/87983JD02A/002	Base of EUT Antenna Retracted (Region 1) Facing Phantom
PHT/87983JD02A/003	Base of EUT Antenna Retracted (Region 2) Facing Phantom
PHT/87983JD02A/004	Base of EUT Antenna Extended (Region 2) Facing Phantom
PHT/87983JD02A/005	Secondary-Edge Landscape of EUT with Antenna Retracted Facing Phantom
PHT/87983JD02A/006	Secondary-Edge Landscape of EUT with Antenna Extended Facing Phantom
PHT/87983JD02A/007	Primary-Edge Portrait of EUT with Antenna Retracted Facing Phantom
PHT/87983JD02A/008	Primary-Edge Portrait of EUT with Antenna Extended Facing Phantom
PHT/87983JD02A/009	Secondary-Edge Portrait of EUT with Antenna Retracted Facing Phantom
PHT/87983JD02A/010	Base of EUT Antenna Retracted Facing Phantom (configuration set-up For SPLSR calculation)
PHT/87983JD02A/011	Landscape View of EUT with Antenna Retracted
PHT/87983JD02A/012	Landscape View of EUT with Antenna Extended
PHT/87983JD02A/013	Portrait View of EUT with Antenna Retracted
PHT/87983JD02A/014	Portrait View of EUT with Antenna Extended
PHT/87983JD02A/015	Base View of EUT with Antenna Retracted
PHT/87983JD02A/016	Base View of EUT with Antenna Retracted
PHT/87983JD02A/017	Primary-Edge View of Landscape EUT with Antenna Retracted
PHT/87983JD02A/018	Primary-Edge View of Landscape EUT with Antenna Extended
PHT/87983JD02A/019	Secondary-Edge View of Landscape EUT with Antenna Retracted
PHT/87983JD02A/020	Secondary-Edge View of Landscape EUT with Antenna Extended
PHT/87983JD02A/021	Base View of Radiated Sample
PHT/87983JD02A/022	Base View of Conducted Sample
PHT/87983JD02A/023	EUT Schematics with WWAN-Antenna to WLAN-Antenna separation distance
PHT/87983JD02A/024	900 MHz Body Fluid Level
PHT/87983JD02A/025	2450 MHz Body Fluid Level

PHT/87983JD02A/001: Test configuration for the measurement of Specific Absorption Rate (SAR)



PHT/87983JD02A/002: Base of EUT Antenna Retracted (Region 1) Facing Phantom



PHT/87983JD02A/003: Base of EUT Antenna Retracted (Region 2) Facing Phantom



PHT/87983JD02A/004: Base of EUT Antenna Extended(Region 2) Facing Phantom



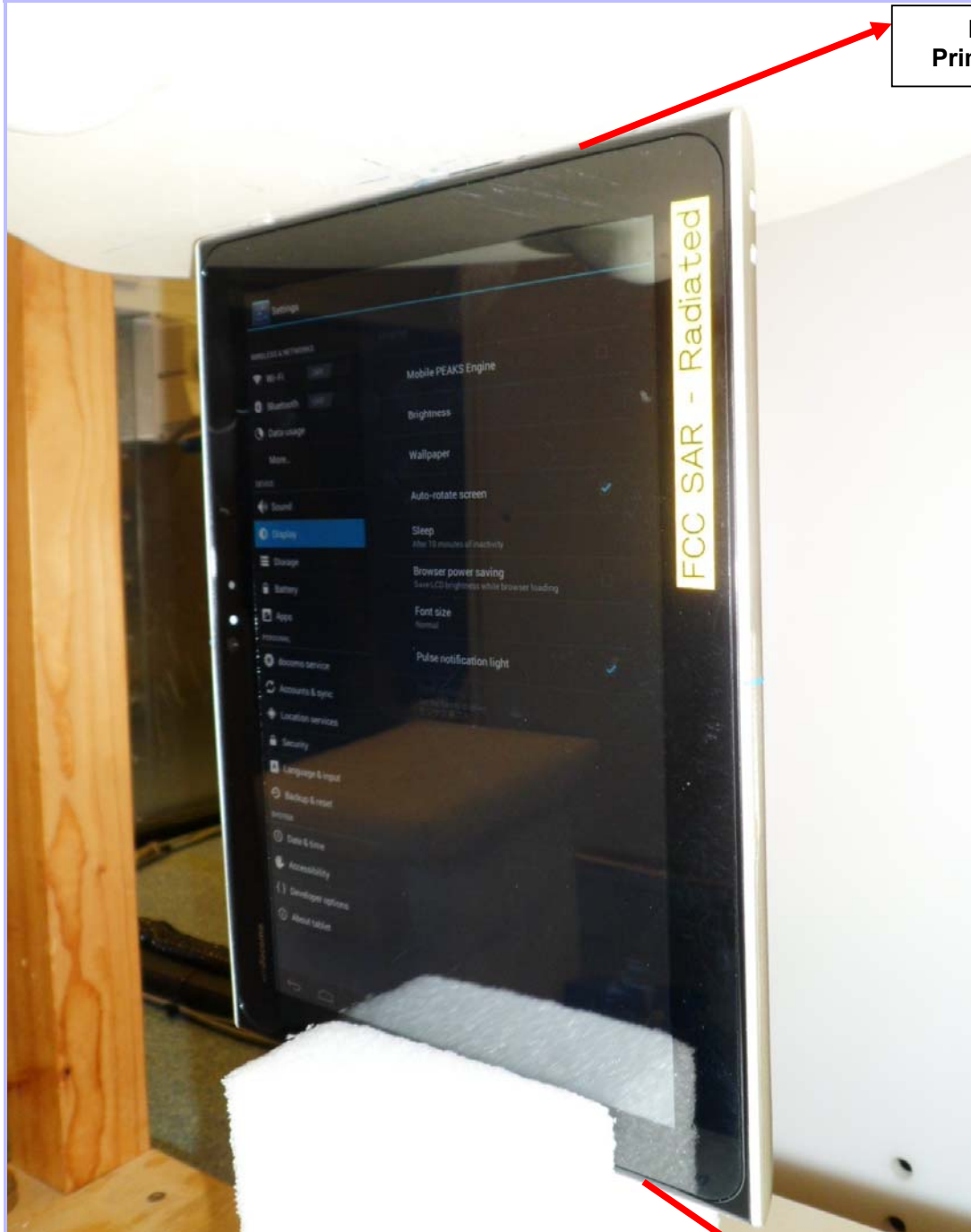
PHT/87983JD02A/005: Secondary-Edge Landscape of EUT with Antenna Retracted Facing Phantom



PHT/87983JD02A/006: Secondary-Edge Landscape of EUT with Antenna Extended Facing Phantom



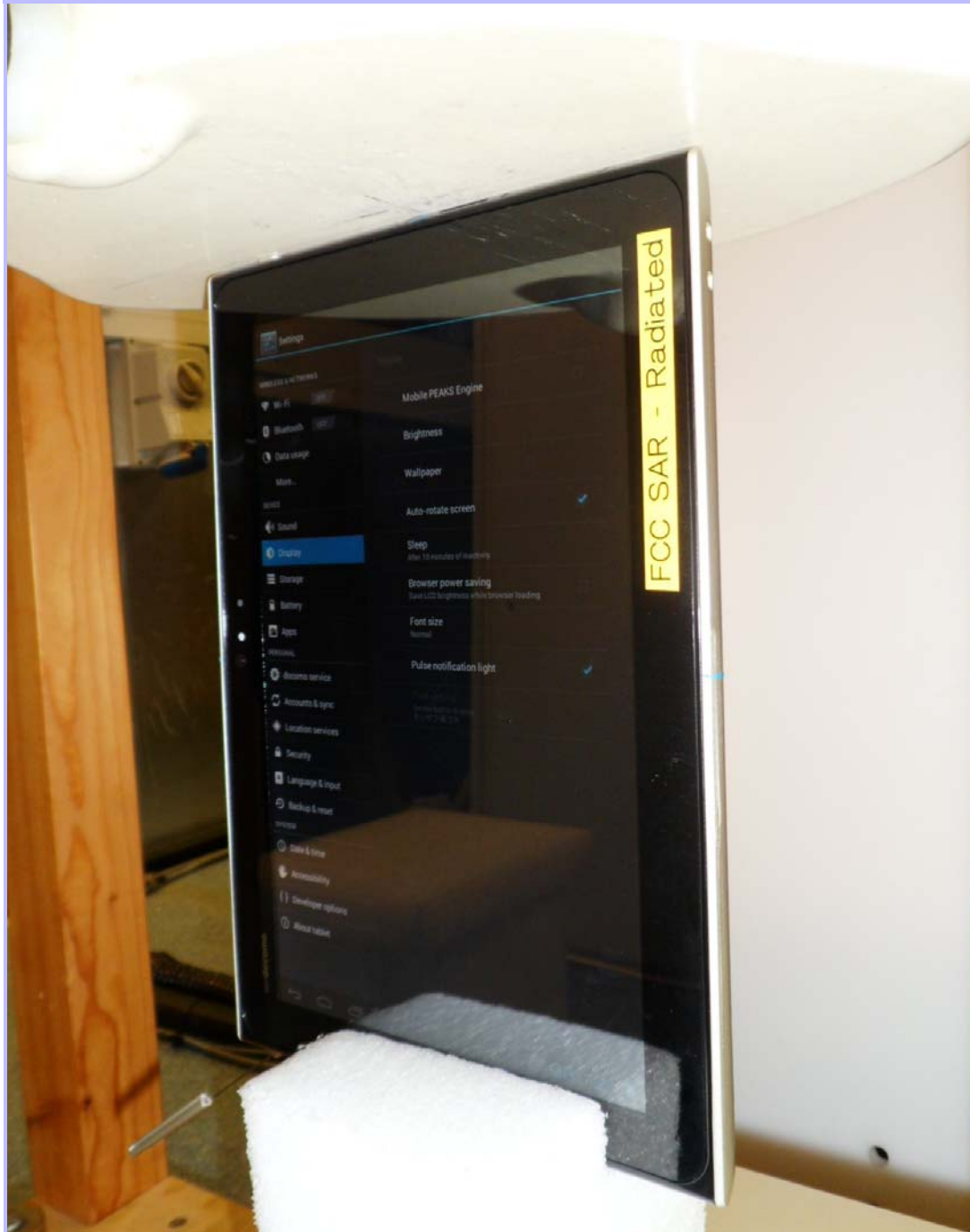
PHT/87983JD02A/007: Primary-Edge Portrait of EUT with Antenna Retracted Facing Phantom



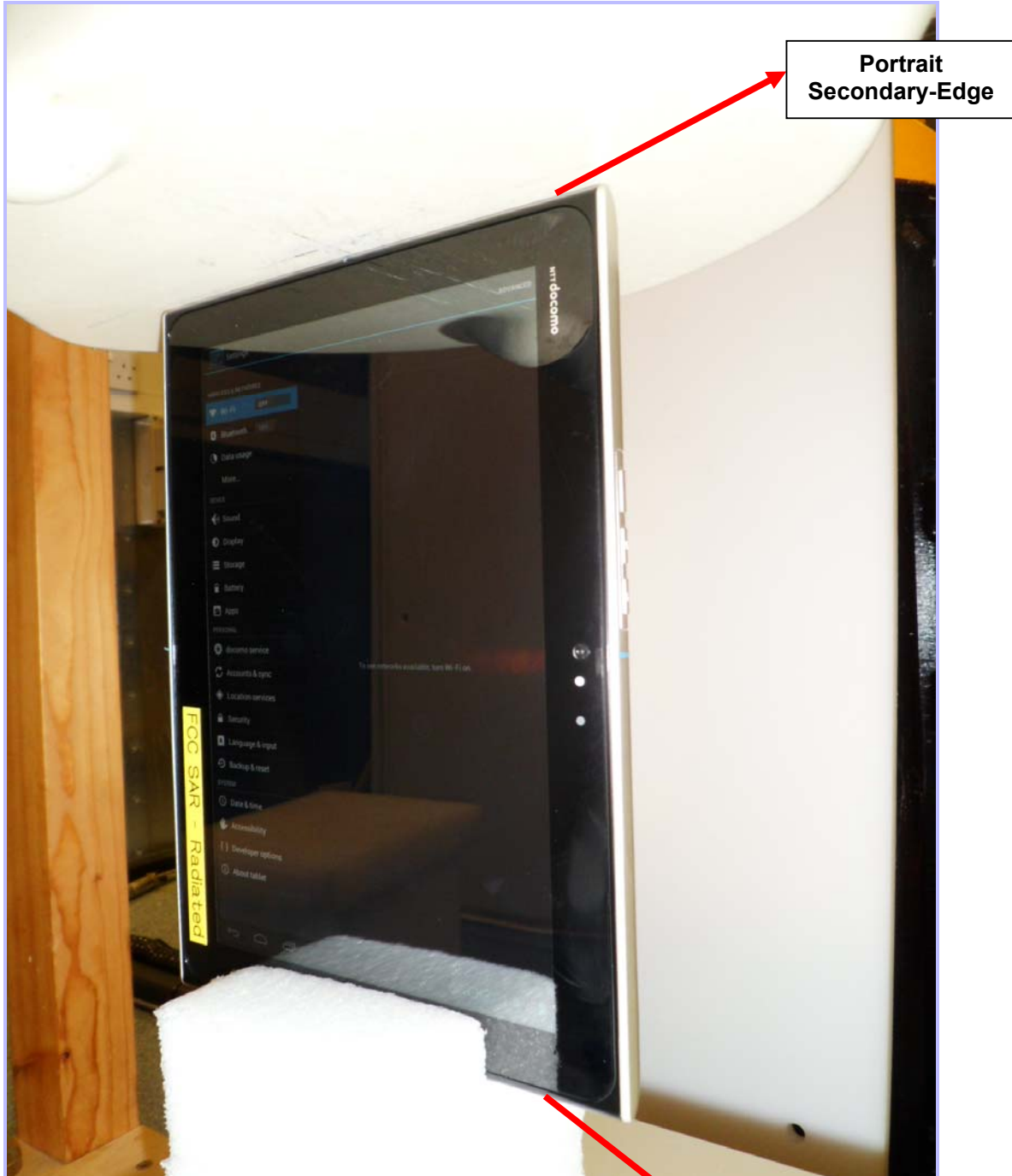
Portrait
Primary-Edge

Portrait
Secondary-Edge

PHT/87983JD02A/008: Primary-Edge Portrait of EUT with Antenna Extended Facing Phantom



PHT/87983JD02A/009: Secondary-Edge Portrait of EUT with Antenna Retracted Facing Phantom



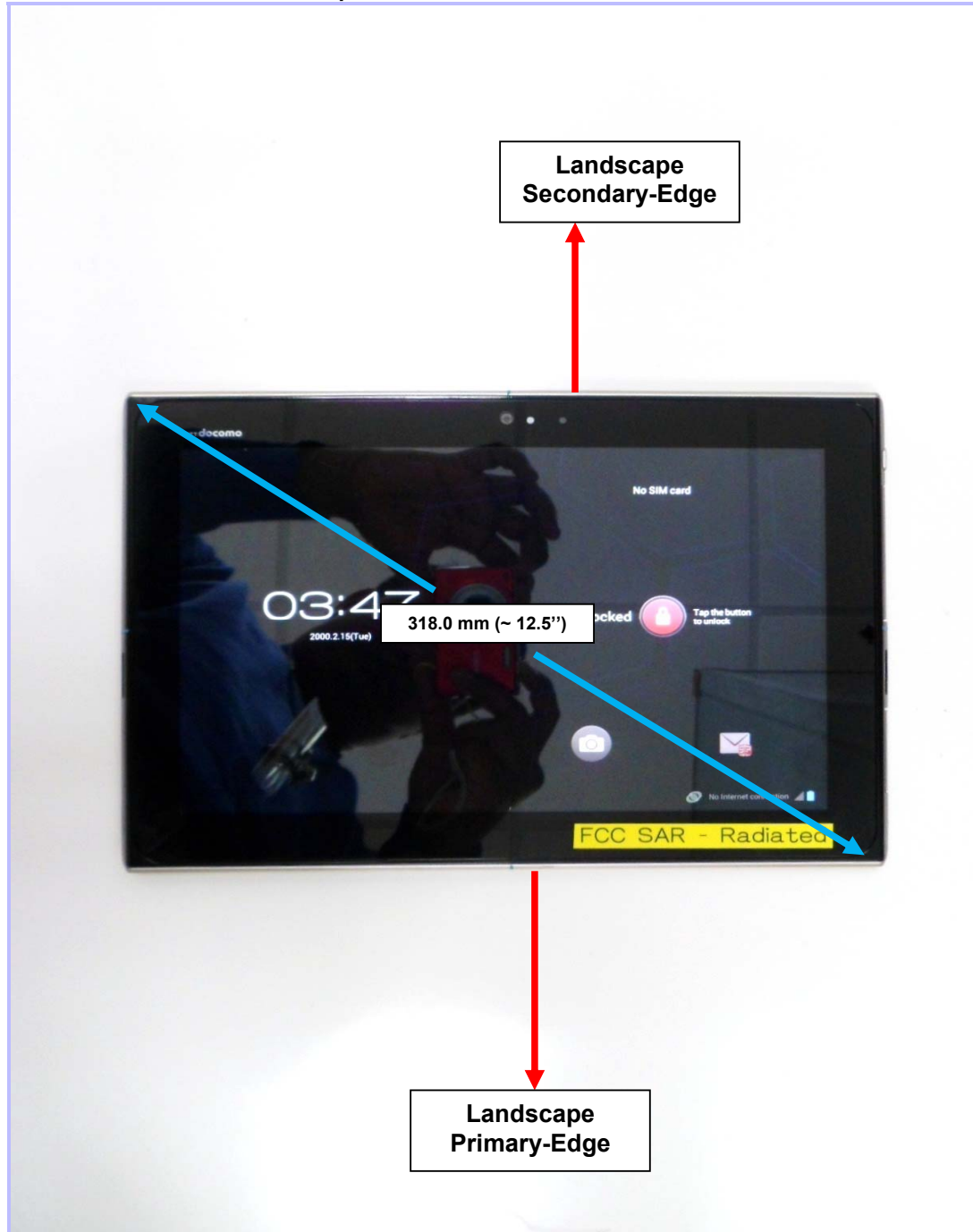
**Portrait
Secondary-Edge**

**Portrait
Primary-Edge**

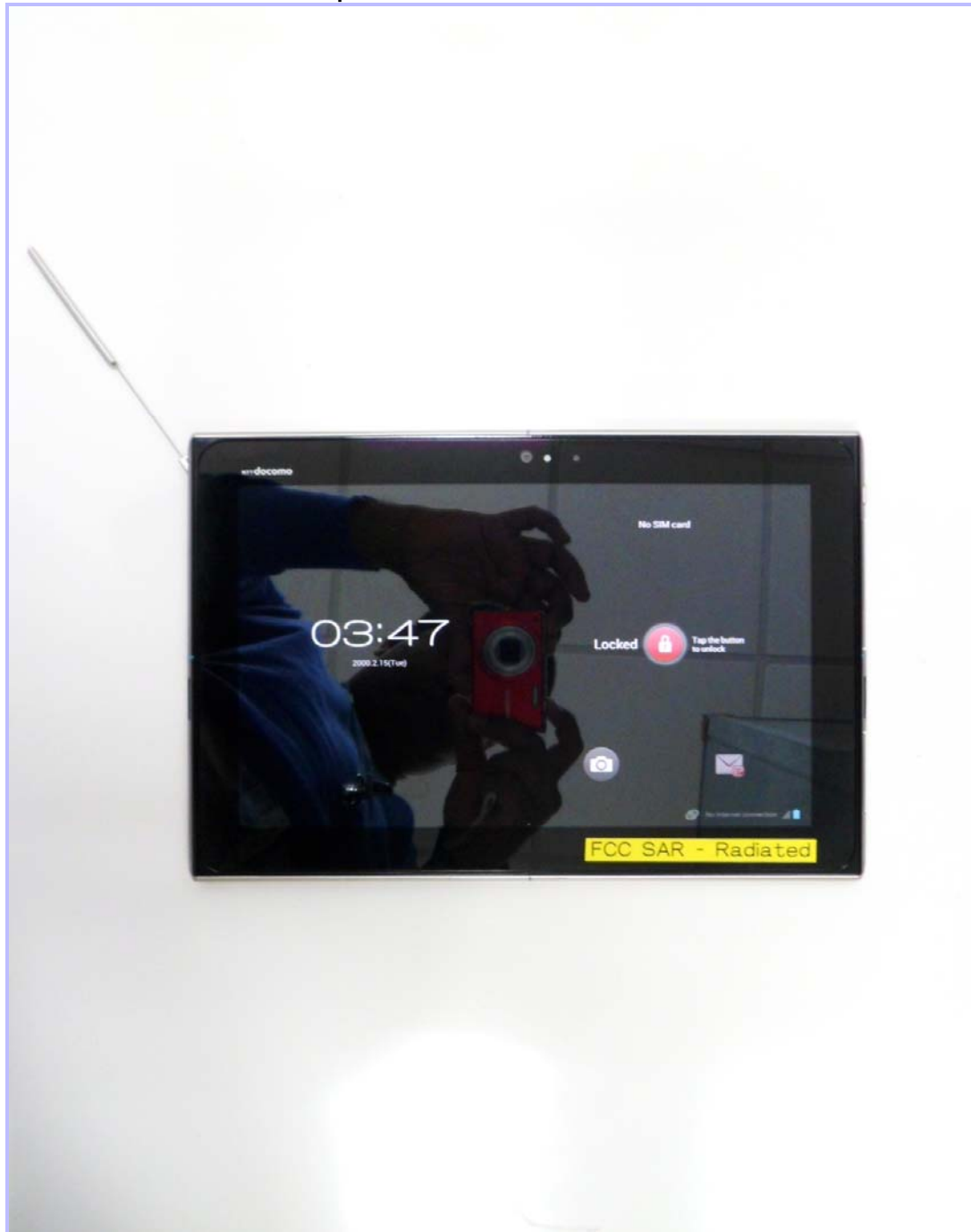
PHT/87983JD02A/010: Base of EUT Antenna Retracted Facing Phantom (configuration set-up For SPLSR calculation)



PHT/87983JD02A/011: Landscape View of EUT with Antenna Retracted



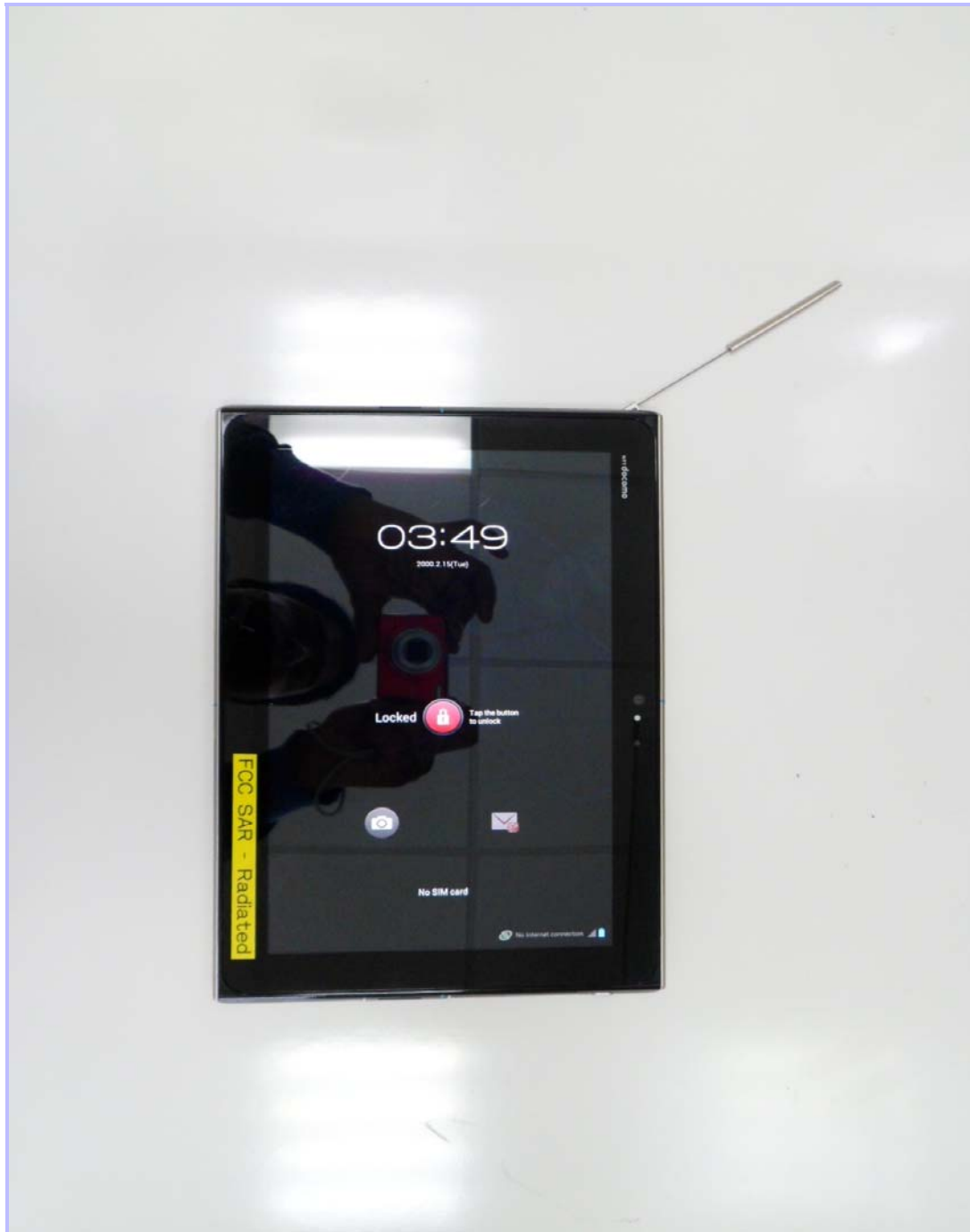
PHT/87983JD02A/012: Landscape View of EUT with Antenna Extended

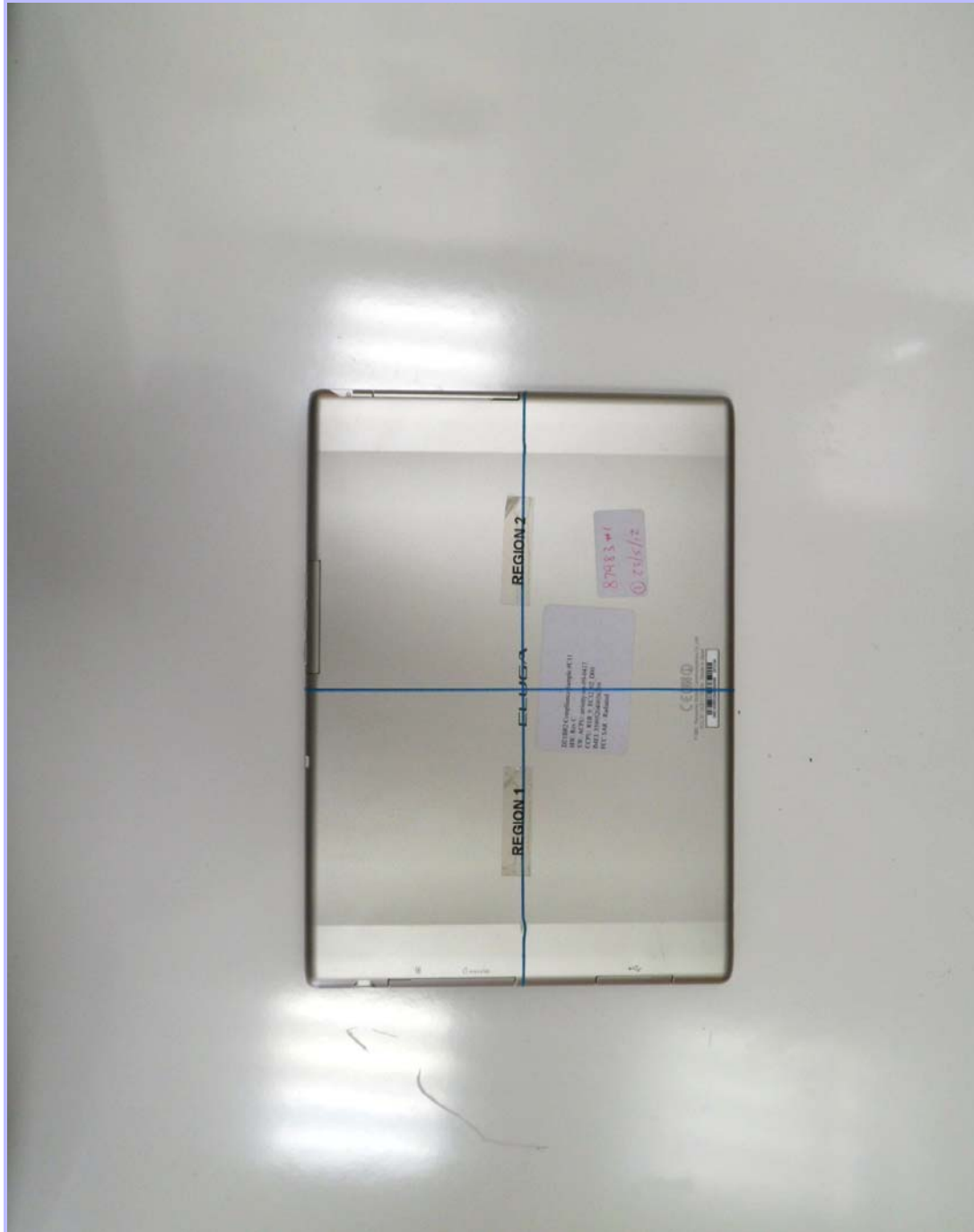


PHT/87983JD02A/013: Portrait View of EUT with Antenna Retracted



PHT/87983JD02A/014: Portrait View of EUT with Antenna Extended



PHT/87983JD02A/015: Base View of EUT with Antenna Retracted

PHT/87983JD02A/016: Base View of EUT with Antenna Retracted



PHT/87983JD02A/017: Primary-Edge View of Landscape EUT with Antenna Retracted



PHT/87983JD02A/018: Primary-Edge View of Landscape EUT with Antenna Extended



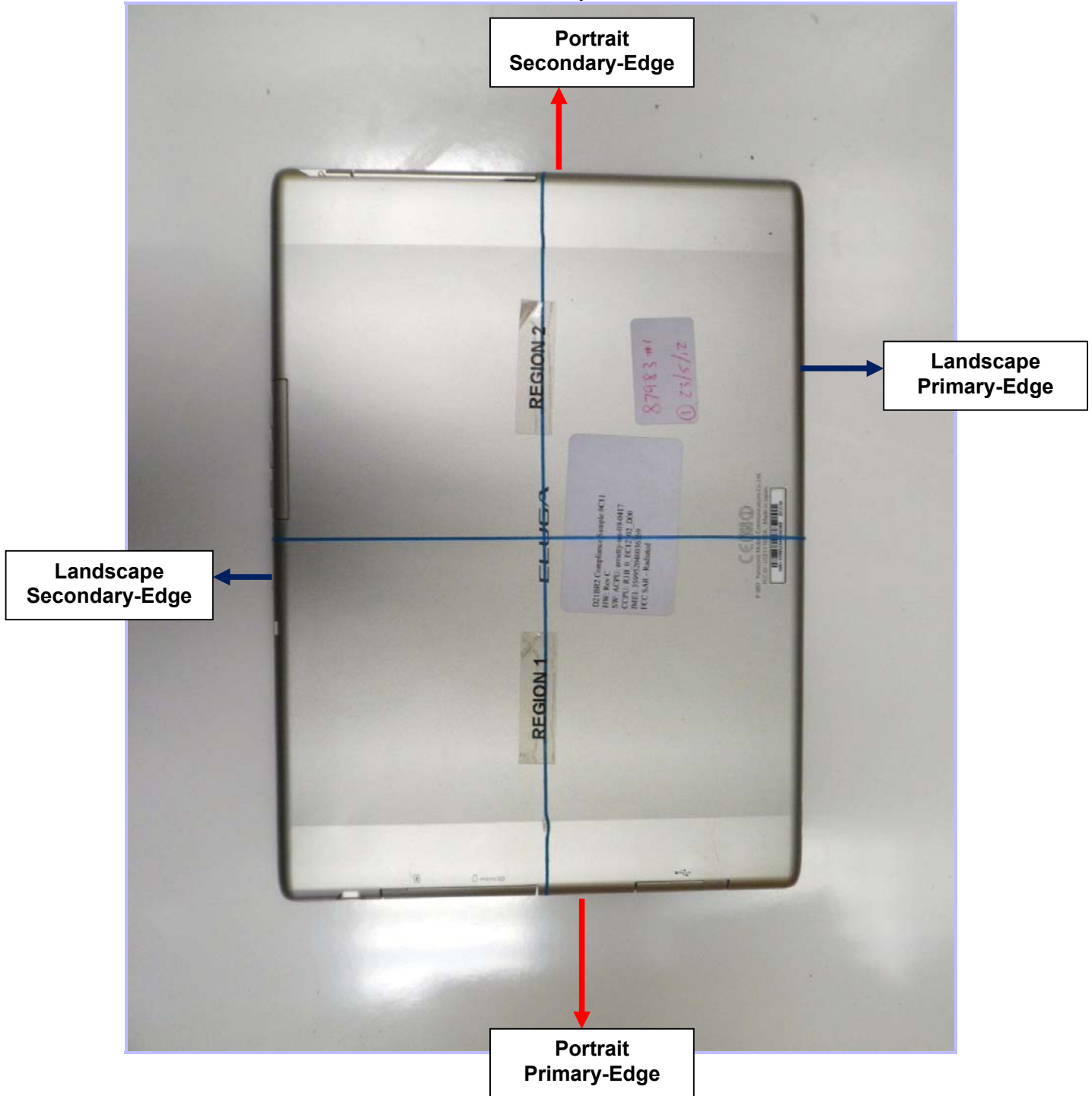
PHT/87983JD02A/019: Secondary-Edge View of Landscape EUT with Antenna Retracted



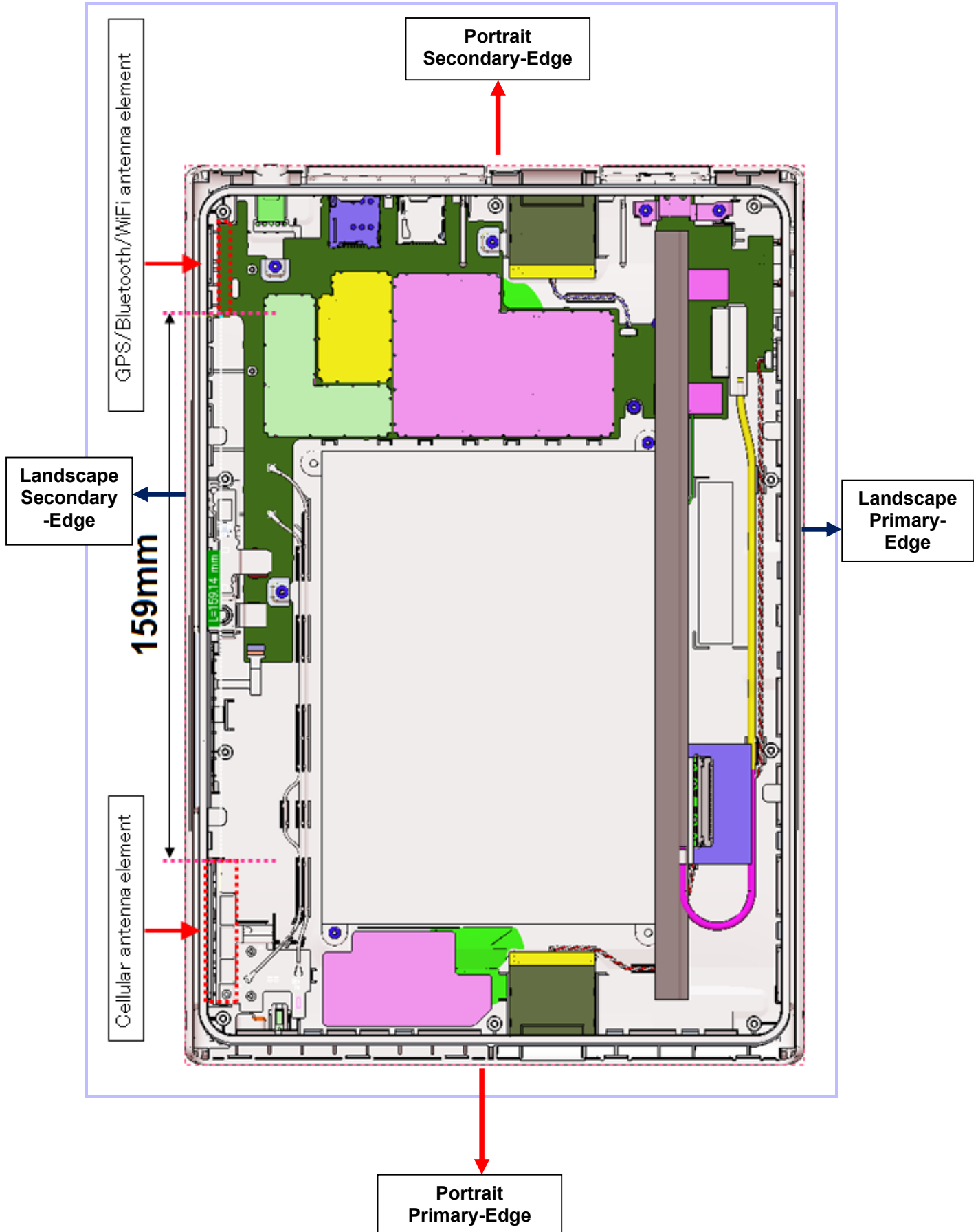
PHT/87983JD02A/020: Secondary-Edge View of Landscape EUT with Antenna Extended



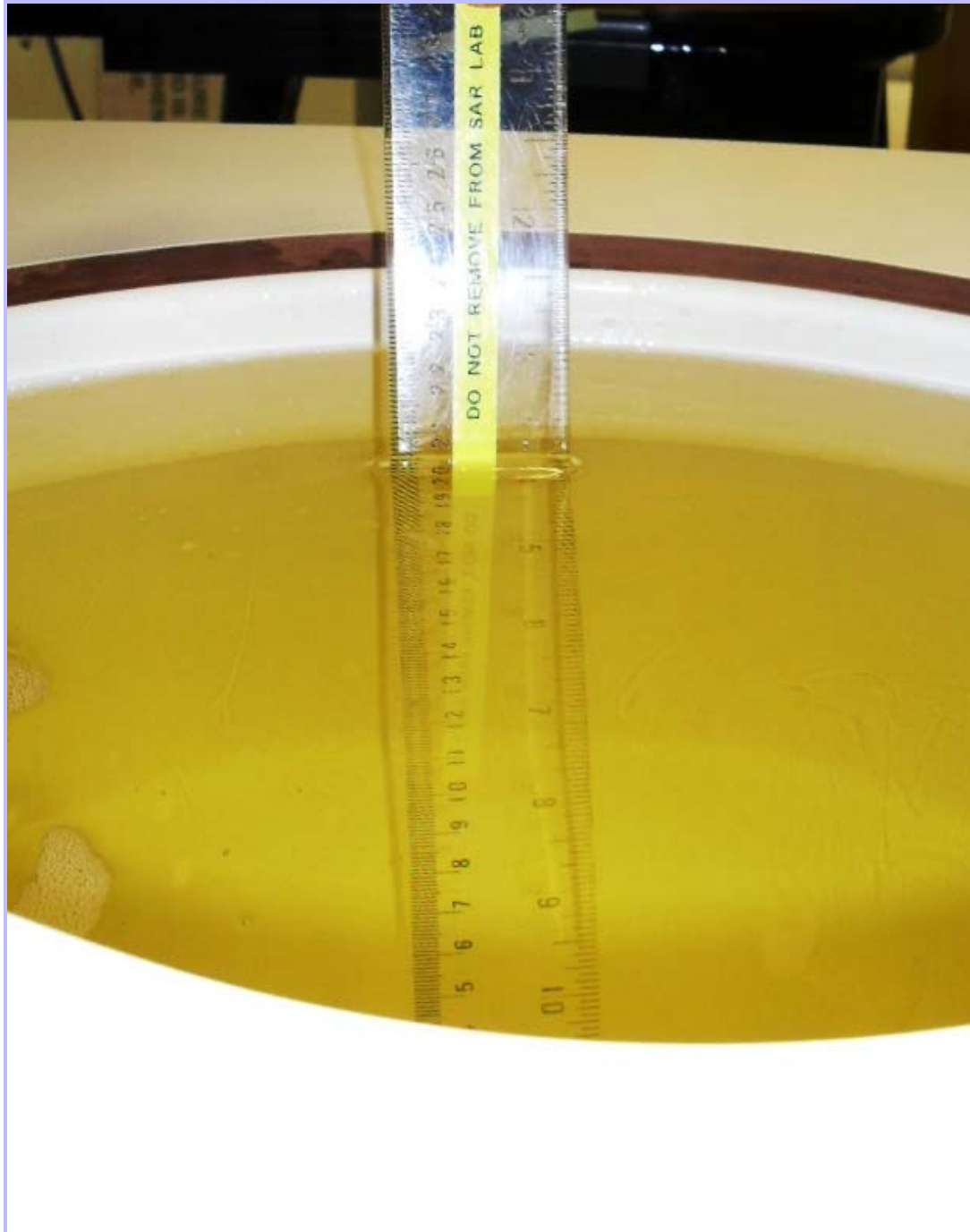
PHT/87983JD02A/021: Base View of Radiated Sample



PHT/87983JD02A/022: Base View of Conducted Sample

PHT/87983JD02A/023: EUT Schematics with WWAN-Antenna to WLAN-Antenna Separation Distance

PHT/87983JD02A/024: 900 MHz Body Fluid Level



PHT/87983JD02A/025: 2450 MHz Body Fluid Level

