

# XPDA-S

## Quick Starting Guide

---

*Aug 2004*



## **Regulatory Notices**

This device is compliant with Parts 15, and 22 of the FCC Rules.

Operation of this device is subject to the following two conditions:

1. This device may not cause harmful interference, and
2. This device must accept any interference received, including interference that may cause undesirable operations.

FCC guidelines stipulate that the antenna should be more than 1.5cm (0.6") from all persons.

### **FCC RF EXPOSURE COMPLIANCE**

In August 1996 the Federal Communications Commission (FCC) of the United States with its action in Report and Order FCC 96-326 adopted an updated safety standard for human exposure to radio frequency (RF) electromagnetic energy emitted by FCC regulated transmitters. Those guidelines are consistent with the safety standard previously set by both U.S. and international standards bodies. The design of this phone complies with the FCC guidelines and these international standards.

Use only the supplied or an approved antenna. Unauthorized antennas, modifications, or attachments could impair call quality, damage the phone, or result in violation of FCC regulations.

**This device has been tested for FCC RF exposure hand and body SAR compliance for the user. In order to comply with FCC RF exposure requirements, XPDA-S user is recommended to have good knowledge on RF exposure. The use of this device in any other type of host configuration may not comply with FCC RF exposure requirements and should be avoided. During operation, a 1.5cm separation distance should be maintained between the antenna and the user's/bystander's body (excluding hands, wrists, feet, and ankles) to ensure FCC RF exposure compliance.**

### CAUTION

Any changes or modifications to the equipment not expressly approved by the party responsible for compliance could void user's authority to operate the equipment.

### WARNING (EMI)

This equipment has been tested and found to comply with the limits pursuant to Part 15, and 22 of the FCC rules. These limits are designed to provide reasonable protection against harmful interference in an appropriate installation.

This equipment generates, uses, and can radiate radio frequency energy and, if not installed and used in accordance with the instructions, may cause harmful interference to radio communication. However, there is no guarantee that interference will not occur in a particular installation. If this equipment does cause harmful interference to radio or television reception, which can be determined by turning the equipment off and on, the user is encouraged to try to correct the interference by one or more of the following measures:

- Reorient or relocate the receiving antenna.
- Increase the separation between the equipment and the receiver.
- Connect the equipment into an outlet on a circuit different from that to which the receiver is connected.
- Consult the dealer or an experienced radio/TV technician for help.

## Table of Contents

<b>Table of Contents</b> .....	<b>4</b>
<b>Disclaimer</b> .....	<b>5</b>
<b>Warranty Statement</b> .....	<b>6</b>
How to obtain performances of warranty .....	<b>6</b>
<b>Warranty Claim Processing Policy</b> .....	<b>7</b>
<b>Service and Support</b> .....	<b>8</b>
<b>NOTICE</b> .....	<b>9</b>
<b>1. Inside of Box</b> .....	<b>10</b>
<b>2. Parts of the XPDA-S</b> .....	<b>11</b>
<b>3. Recharging and replacing battery</b> .....	<b>14</b>
<b>4. Turning On/Off and Reset</b> .....	<b>15</b>
<b>5. Calibrating touch screen</b> .....	<b>17</b>
<b>6. Connecting with PC</b> .....	<b>18</b>
<b>7. Scanning bar code</b> .....	<b>20</b>
<b>8. Reading magnetic card</b> .....	<b>21</b>
<b>10. Expansion slot</b> .....	<b>22</b>
<b>11. Maintaining the XPDA-S</b> .....	<b>23</b>
<b>12. Accessories</b> .....	<b>24</b>

Thank you for purchasing the XPDA-S. This is product guide for end users. Please, read these documents before starting using the XPDA-S. This product guide provides important basic operation and maintenance information. Copyright © ITWell Co., Ltd. An unpublished work – All rights reserved. No parts of this documents or the procedure described therein may be reproduced or transmitted in any form or by any means without prior written permission of ITWell Co., Ltd. or its wholly owned subsidiaries. Owners of ITWell products are hereby granted non-exclusive, revocable license to reproduce and transmit this documentation for the purchasers own internal business purpose. Purchaser shall not remove or alter any proprietary notices, including copyright notices, contained in this documentation and shall ensure that all notice appear on any reproductions of the documentation.

Should future revisions of this manual be published, you can acquire printed version by contacting ITWell customer support team. Electronic version will be either downloadable from the ITWell website ([www.XPDA9.com](http://www.XPDA9.com)) or provided appropriate media. If you visit our website and would like to make a comments or suggestions about this or other ITWell publications, please let us know via the “contact ITWell” page.

## Disclaimer

Reasonable measure has been taken to ensure that information included in this manual is complete and accurate. However, ITWell reserves rights to change the specification at any time without prior notice.

ITWell is registered trademark of ITWell Co., Ltd. The ITWell logo is trademark of ITWell Co., Ltd. All other trademarks and trade names referred to herein are proprietary of their respective owners.

## Warranty Statement

Subject to warranty conditions below the original purchaser of this product is warranted by ITWell Co., Ltd that this product is free from defects in material or workmanship. Excluding rechargeable battery, this warranty is applicable to both parts and labor for the first 12 months since the date of the original purchase and is not transferable to a third party. Warranty on rechargeable battery is valid for six month from the date of purchase.

The warranty does not cover damage, malfunction or failure of the product resulting from:

- installation procedures other than those specified by manufacturer
- accidental damage
- negligence to follow proper care and maintenance procedures
- exposure to unusual physical or electrical stress
- use of the product outside the conditions specified by the manufacturer

ITWell Co., Ltd may not be held liable for any loss of customer's software or data or any damage to the purchaser resulting from the loss of software or data.

For as long as there is no conflict with the applicable law the foregoing warranty replaces all other covenants or warranties related to the product or its sale including any implied warranties of mechanical or fitness for a particular purpose. Under this warranty the only liability for ITWell Co., Ltd is to repair or replace the defective product for the original purchaser for the duration of the warranty period. The maximum liability under this warranty shall not exceed the purchase cost of the product. This warranty does not cover or provide for the reimbursement or payment of indirect, incidental or consequential damages.

The above limitation or exclusion is not applicable if it contravenes the applicable jurisdictions in some countries, states or provinces.

### **How to obtain performances of warranty**

In the event of warranty claim the product should be returned to the nearest service collection center with the proof of purchase. Please, contact [support@XPDA9.com](mailto:support@XPDA9.com) for the information.

Processing of valid warranty claims will be in accordance with the ITWell's Warranty Claim Processing Policy.

## **Warranty Claim Processing Policy**

1. Defective products are delivered to the nearest Service Collection Center on the expense of the warranty claimant.
2. Upon successful verifying of the validity of the claim ITWell Co., Ltd or its authorized service provider determines if the repair is minor (i.e. the problem can be fixed within 3 working days) or major (i.e. it requires more than 3 working days to fix the problem)
3. In the former case the repaired unit is dispatched to the claimant within 4 working days, or, if minor repair is upgraded to a major one within the first three days since the reception of the unit, a replacement unit is dispatched to the claimant on the expense of ITWell as soon as possible. ITWell will ensure that the replacement unit has the same or better parameters and functionalities as the original unit.
4. In the case of a major repair a replacement unit is sent to the claimant as soon as possible. Any parts replaced as a result of a repair (both minor and major) become the property of ITWell. When the repair is completed the original unit is delivered to the claimant on the expense of ITWell.
5. The claimant is entitled to use the replacement unit for the duration of the repair, i.e. until the original unit is repaired and returned. ITWell can at its sole discretion to declare the unit irreplaceable. In such a case the replacement unit becomes the property of the claimant and the original unit becomes the property of ITWell Co., Ltd.
6. The claimant is required to return the replacement unit to ITWell within three following days, since the reception of the repaired unit. The claimant meets the costs associated with the return of the replacement unit. ITWell may charge the claimant for the replacement unit, if the claimant does not return the replacement unit to ITWell within 3 working days since the reception of the repaired unit.

## Service and Support

If you encounter problems during routine operation of the XPDA-S, consult the Troubleshooting chapter for the cause of and remedy to your problem. If the problem persists contact ITWell by email ([support@XPDA9.com](mailto:support@XPDA9.com)) or telephone (+82-2-720-1010). Please ensure that your email support request includes the following information:

- your contact details
- serial number of the device
- short description of the problem including any error messages that you are getting
- steps on how to reproduce the error

Similarly, before you make a telephone call please ensures that you are able to provide the above information to our support staff.



## NOTICE

The XPDA-S is equipped with a two Lithium-Ion battery pack for main body and printer/MSR unit. Also, additional Lithium backup battery is installed inside of main body. When you first start using the XPDA-S or complete discharge of batteries, it is possible that the XPDA-S may not power-on.

In the above situation, plug the XPDA-S to power adopter and recharge the unit for five hours in order to fully charge batteries. It is not necessary to power on the XPDA-S in order to charge. When the XPDA-S is being charged, power LED will light in red color. When it is completely charged it will change to green.

Main body backup battery can last up-to five minute without the support of main battery. Therefore in order to prevent data protection failure due to backup battery failure, please recharge the XPDA-S as often as possible. Do not leave the XPDA-S without connection to AC power adopter for an extended period of time. Also, getting an extra spare battery can help you save the critical data, during unexpected power failure.

## 1. Inside of Box

Before using the XPDA-S please check if below items are included within the box.

- XPDA-S
- One Lithium-Ion rechargeable battery
- Cradle
- Stylus pen
- USB and power cable
- CD-ROM
- Quick Starting Guide (this documents)

If any of items are missing please contact the sales representative where you have purchased the XPDA-S.

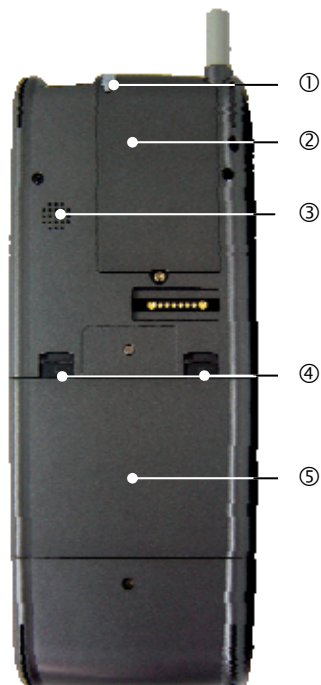
## 2. Parts of the XPDA-S

### Front View



- ① Antenna
- ② Magnetic Strip Reader(MSR) : Bi-directional MSR for reading triple track (track 1, 2 & 3)
- ③ Power button
- ④ Paper out path : This is where paper comes out from paper chamber.
- ⑤ Thermal printer cover

### Back View



- ① Stylus pen and pen holder
- ② SD/MMC slot chamber cover
- ③ Speaker
- ④ Battery release lock
- ⑤ Li-Ion battery pack

## Right side View



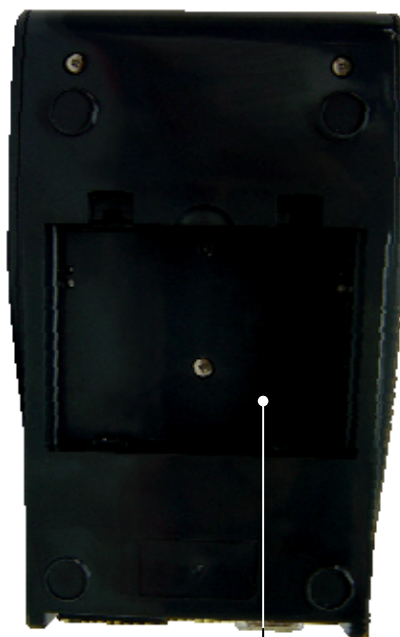
- ① Left scanner trigger
- ② Side function key
- ③ TAB key



- ① Right scanner trigger
- ② Smart card reader for reading chip card
- ③ Stereo out
- ④ Reset hole



① ②



③



④ ⑤ ⑥

- ① Recharge LED
- ② Battery recharge LED
- ③ Extra battery charging slot
- ④ Powered serial port
- ⑤ USB port
- ⑥ Power cable plug

## 3. Recharging and replacing battery

### Recharging XPDA-S

- To recharge simply place XPDA-S on top of cradle. The LED indicator will be turned on red color.
- It takes over 5 hours to fully recharge.
- Your terminal is equipped with back up battery to save memory when the main unit battery is removed or fully discharged. It takes 1 ~ 2 more hours to charge completely when you first use the XPDA-S.
- When battery is completely charged the LED indicator will turn green.

### Recharging auxiliary battery

- XPDA-S cradle has a extra battery charging slot at the bottom. This slot can be used to recharge battery separately. During recharging right side LED will stay red and when recharging is completed led will turn green.

### Installing and replacing batteries

- Click power button to turn off XPDA-S
- Must pull both battery latches to release battery.
- To insert new battery into XPDA-S, insert one end of battery first as below picture. Then, push in the other end until makes a “click” sound.

\* We recommend you to turn off power before changing battery.

- When the battery is running out of power, the XPDA-S displays warning message. Either you will have to recharge the XPDA-S or replace the battery with charged one. If you continue to operate, you may face the risk of losing all the valuable data.
- XPDA-S cradle can use anywhere from 95V ~ 240V.
- Please only use the lithium-ion battery provided from ITWell.
- Replace the battery within 10 ~ 15 minutes before auxiliary battery runs out. If not, saved data can be lost.

## 4. Turning On/Off and Reset

### Turning on for the first time

When you have just inserted battery or charging for the first time, you must press reset hole with stylus to start XPDA-S. Otherwise, screen will remain white with back light on and XPDA-S will not respond.

### Turning on and off

Simply press the power button to turn on the XPDA-S. Press power button again to turn off XPDA-S. Unlike PC, XPDA-S is not turned off but enters “sleep status” to keep its memory alive.

### Soft Reset

Press the reset hole with stylus to reset the XPDA-S.

Reset buttonhole is located on right side, below stereo out hole. Pressing the reset button will restart the Windows CE and starts at touch screen calibration steps. All the saved data, applications and configuration will remain in the XPDA-S. Unsaved data will be lost during soft reset operation.

---

**Warning** Soft reset will cause unsaved data to be lost. Please, save all the data before performing soft reset.

---

### Hard Reset

Press the reset button for 10 seconds and release. When screen is turned white, press the reset hole again to boot XPDA-S

Also, unplugging the battery for more than 15 minute or completely discharging main and backup battery will cause hard reset. In such case, replace with fully charged battery or recharge to restart the XPDA-S.

When hard reset is performed the XPDA-S goes back to factory default setup condition. System configuration, saved data, any user installed application and device driver will be lost during hard reset.

---

**Warning**

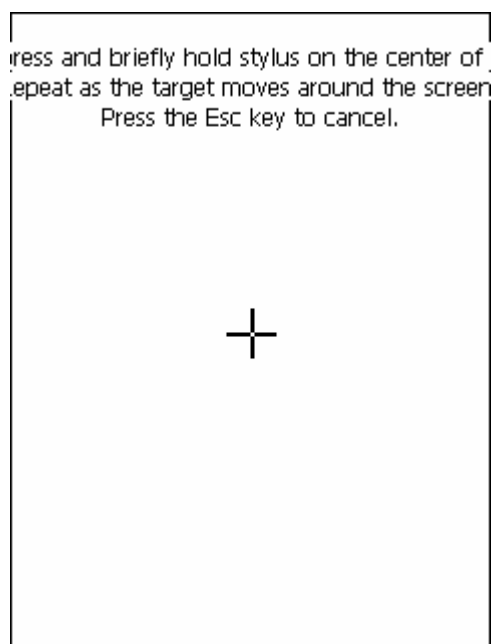
**Hard reset will cause the XPDA-S to return to its original factory default setting. Any unsaved data, application, and device driver on XPDA-S memory will be deleted. Use MMC or CF memory card to save critical data or backup as often as possible.**

---



## 5. Calibrating touch screen

When the XPDA-S is turned on first time or resetted, touch screen calibration screen starts. Press center of the cross mark with stylus. When the cross mark disappears. Press “ENT” key on the keypad to accept the calibration. To cancel the calibration enter “CLR” key. When, you can’t accurately point on the screen, you also need to run touch screen calibration.



## 6. Connecting with PC

In order to install new application, exchange and back up data to your desktop, Microsoft ActiveSync must be installed.

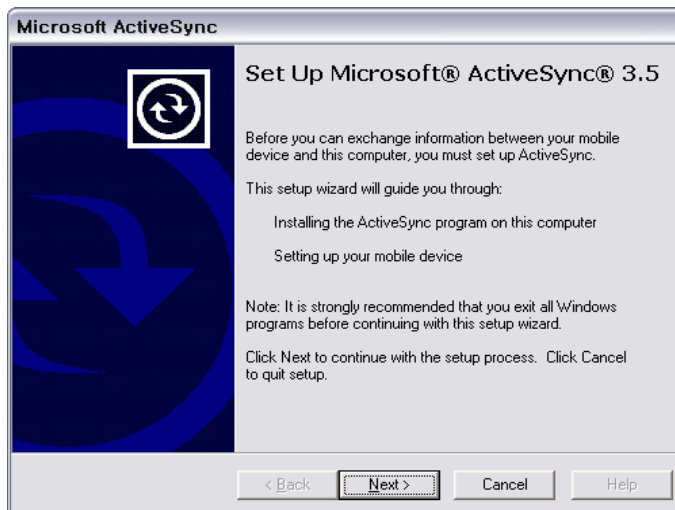
With Microsoft ActiveSync you can:

- Transfer data
- Back up and restore the XPDA-S data
- Add programs to and remove programs from the XPDA-S

ActiveSync is included in CD-ROM that came with the XPDA-S. Also, it can be downloaded free of charge from Microsoft's Web sites.

### Installing ActiveSync on PC

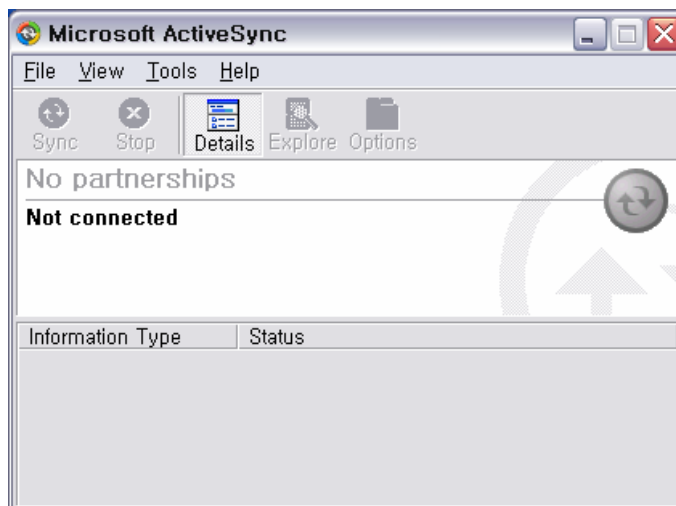
Run setup.exe from the ActiveSync CD-ROM



Click next to continue setting up ActiveSync. After ActiveSync has been installed and restarted computer, you will see below screen.



Make sure the XPDA-S firmly placed on top of cradle and cradle is connected to PC with USB cable. Turn on the XPDA-S main unit and press next to start ActiveSync.



## 7. Scanning bar code

When bar code scan button is pressed red laser light beam is emitted. When bar code is successfully scanned, beep sound is heard. During normal operation bar code scanner is not activated. Pressing bar code scanner button won't trigger bar code scanner, unless an application that uses bar code is running on the XPDA-S.

## 8. Reading magnetic card

Swipe a magnetic card all the way through MSR. Card can be swiped both directions but magnetic strip must face downwards. Beep sound is heard when the XPDA-S reads card successfully. MSR only works when the card reading application is running on the XPDA-S.

## 10. Expansion slot

### Using CF slot.

CF memory, wireless LAN card, and various other CF type add on peripheral can be inserted into CF slot. When CF card is inserted into slot, the XPDA-S will ask if CF card should be powered by the XPDA-S. You must click “Yes” to use the CF card.

Message will not appear, if XPDA-S is placed on top of cradle or connected to power adopter..

### NOTE:

---

**Adding a peripheral on CF slot can increase the power consumption and reduce the battery power.**

---

### Using SD/MMC slot

SD/MMC slot is hidden under the cover. You must unscrew the cover to access the SD/MMC card.

SD/MultiMediaCard(MMC) is automatically detected and creates SD/MMC DISK folder at “My Computer”. Use SD or MMC to save critical data and quickly exchange data between other XPDA-S and PC. Data saved on SD or MMC disk is not affected by power.

## 11. Maintaining the XPDA-S

The XPDA-S is designed to withstand impact and 1m drop to the floor. Repeated drop and severe impact may cause damage to the unit.

If the XPDA-S is abnormally operating, please turn off the XPDA-S immediately and send it to authorized service center. Prolonged use of the XPDA-S may cause loss of critical data.

Please do not use your the XPDA-S in any location that is extremely wet, dusty, high temperature or damp.

Do not leave the XPDA-S on the dashboard of a car on a hot day, and keep it away from hot surface.

- Please, do not disassemble, decompile, alter, and reverse engineer the XPDA-S hardware or any software without permission.
- When using touch screen, please use the stylus provided from ITWell.
- Please do not use press hard on the touch screen or scratch the screen with sharp object.
- When cleaning the XPDA-S, clean it with soft cloth moistened with a diluted window-cleaning solution or water.
- Always use the power adapter supplied from ITWell to charge the XPDA-S.
- Fully charge the XPDA-S for about five hours for the first time use.

## 12. Accessories

Below are list of optional accessories for the XPDA-S available from ITWell.

- Additional Lithium-Ion Battery
- Cradle
- Carrying case
- Stylus
- USB cable
- Power cable



## Appendix I. the XPDA-S Technical Specification

Dimension		205mm (L) x 75mm (W) x 31mm (D)
Weight		420g
CPU		400 MHz Intel XScale PXA255
Operating system		Microsoft Windows CE.net 4.2
Display		3.5" 1/4 VGA transfective TFT LCD with touch screen for outdoor operation
Resolution		240 X 320
Memory		64MB of SDRAM
		64MB of flash memory
Input	Keypad	12 numeric keys ("0"~"9", "00", ".") 4 programmable keys (F1, F2, F3, F4) TAB, ESC, ENT and backspace Left and right Bar code scanner trigger
	Bar Code	1D laser barcode reader (optional 2D Barcode reader is also available)
	Magnetic Card	Triple track (track 1, 2, & 3) or 2 and 3 dual track magnetic card reader.
Smart card reader		ISO7816, EMV2000 level1 certified Smart Card Reader with 4SAMs
Printer		58mm direct thermal printer, max speed 70mm/sec
Battery		2800mAh user replaceable and rechargeable Li-Ion battery pack
Expansion Slot		CF Type I and II slot for additional memory and add-on peripheral SD/MMC slot for up-to 1GB of additional memory
Communication		IrDA 1.1
		USB mini type B (slave)
		optional integrated CDMA modem(Korean domestic market)
		Wireless ready: CF type Wi-Fi(802.11b), GSM/GPRS or Bluetooth card can be attached at CF card slot.
Other		reset button
		Power on button
		internal speaker
		stereo audio output jack
		phone output jack (for connecting hands-free headset)
Cradle		USB port for ActiveSync
		Serial port for connecting peripherals
		Additional battery charging slot
		110V ~ 220V free volt AC power
Included Accessories		Installation CD-ROM
		USB cable for ActiveSync with PC
		Stylus

For more information and questions, please contact [info@XPDA9.com](mailto:info@XPDA9.com)

For technical support, please contact [support@XPDA9.com](mailto:support@XPDA9.com)

**ITWell Co., Ltd**

Gayang Technotown #505,

1487 Gayang-3Dong, Gangseo-Gu,

Seoul, 157-810 Republic of Korea

<http://www.itwell.co.kr>

<http://www.XPDA9.com>

08-2003 rev 0.91

© ITWell Co., Ltd. All rights reserved