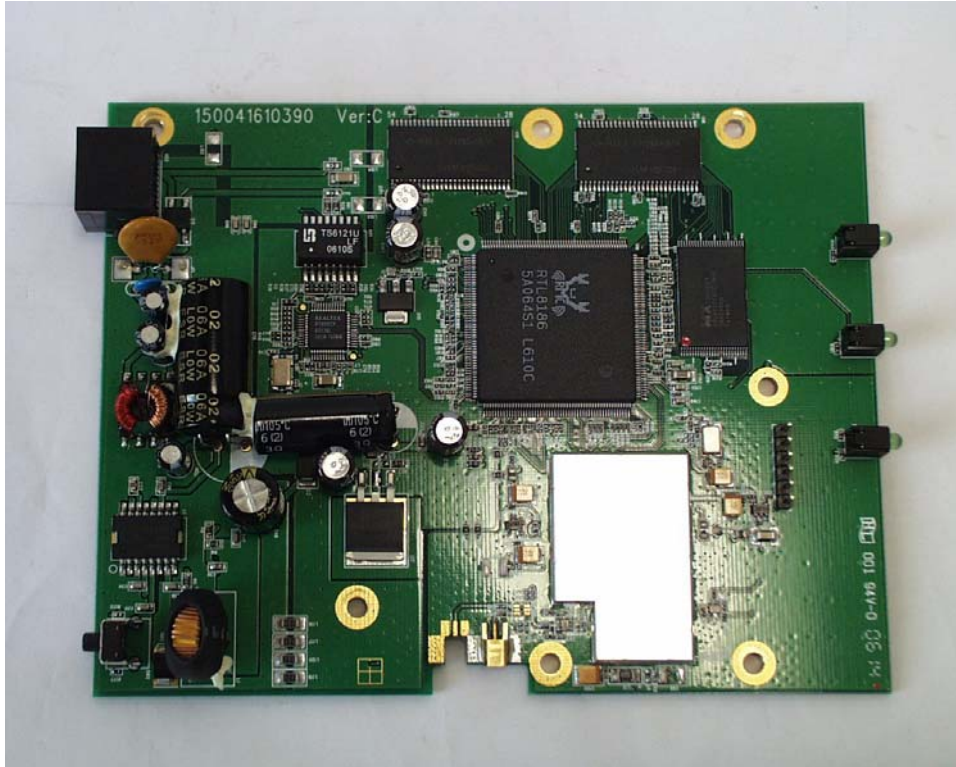
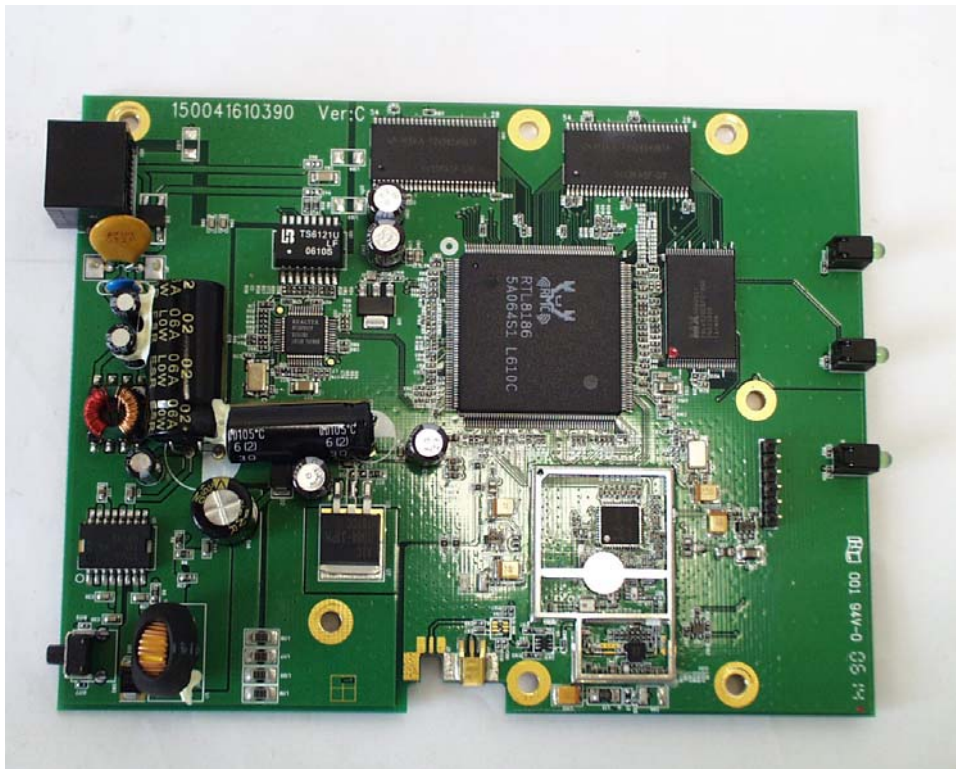


Internal photographs of equipment under test.
Printed Circuit Board with covers in place



Circuit board with covers removed



ROGERS LABS, INC.
4405 W. 259th Terrace
Louisburg, KS 66053
Phone/Fax: (913) 837-3214

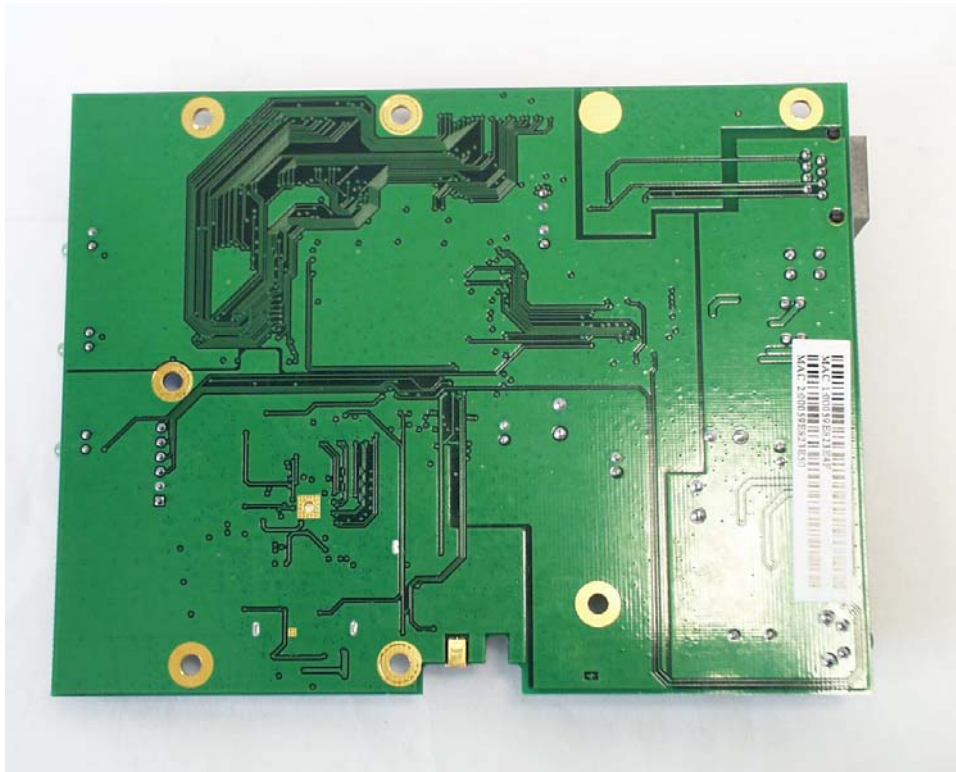
Deliberant LLC
MODEL: DLB2300, DLB2310, DLB2319
Test #: 060622
Test to: FCC Parts 2 and 15c

FCC ID#: UB8-DLB2300

Page 1 of 2

Deliberant DLB23xx Internal photos.doc 6/28/2006

Solder side of printed circuit board



ROGERS LABS, INC.
4405 W. 259th Terrace
Louisburg, KS 66053
Phone/Fax: (913) 837-3214

Deliberant LLC
MODEL: DLB2300, DLB2310, DLB2319
Test #: 060622
Test to: FCC Parts 2 and 15c

FCC ID#: UB8-DLB2300

Page 2 of 2

Deliberant DLB23xx Internal photos.doc 6/28/2006